

WOODVILLE EUREKA
SATURDAY, SEPT. 20th, 1884.

T. D. ROCK, Editor and Proprietor
J. W. THACKARA, Publisher.

Subscribers changing their place of residence will please give notice to the Editor, so that the paper may be sent to the proper address.

Advertisements sent to this office for insertion without any instructions as to the number of times they are to appear, will be continued until ordered to stop.

It is absolutely necessary that all advertisements for salaries be sent to this office on or before the 15th inst. to ensure their insertion.

Subscribers who receive their papers through the mail will please notify us of the non-receipt of such as soon as possible.

Local notices 10 cents, per line.

FOR PRESIDENT OF THE U. S. G. CLEVELAND
OF NEW YORK.

For Vice-President,
OT. AL HENDRICKS
OF ILLINOIS.

FOR GOVERNOR,
JOHN IRELAND
OF MISSOURI.

FOR CONGRESS,
CHARLES STEWART
OF MARYLAND.

FOR STATE SENATOR,
W. L. DOUGLASS
OF LIBERTY.

FOR REPRESENTATIVE, 1ST DIST.
R. J. BRADFORD
OF NEWTON.

EDITORIAL NOTES.

AND LATEST NEWS.

The corner stone of the new granite house was laid at Beaumont on last Saturday.

Colorado will have a surplus for export of about a million bushels of wheat this year.

It is reported that the farmers of Kansas will start their corn and wheat a-bogged for advance in price.

It is stated that Dakota will have a surplus of wheat.

The estimate of the Department of Agriculture places the production of this year at about 40 per cent less than that of 1883.

Three of the most powerful men on earth, to wit, Czar of Russia, the Emperor of Germany and the Emperor of Austria, met in council on last Monday at Survive, in Russia.

Dates of August 30th, give information of a frightful inundation at Kong Sai Province in China. The flood lasted four days. The entire country was submerged to a depth of sixty-five feet. Whole towns were swept away. Nearly 70,000 people perished, and it is believed a fearful pestilence will follow.

Butler the bloody beast, the wily demagogue, and the great comedian got off on last Monday a considerable amount of taffy to the poor people at Union Square in the city of New York.

The handsome coachman of Monsieur Morrison, Jay Gould's banker, eloped a few days ago with the daughter of his master. The old man is in a rage and will doubtless be violent to the young coachman who stole his 25 year old, married daughter.

Extensive districts in Mexico have been visited by swarms of locusts which have utterly destroyed the crops. It is reported that thousands of families, dependent upon small crops will have to be supported by the Government for the next six months.

It is probable the United States will carry over to next year quite one hundred million bushels of wheat. It is also a liberal estimate for home consumption and export. A lower price for wheat has yet been reached and would seem inevitable.

Richard Hoe the head of the great printing press establishment in New York died a few days ago at Ferrytown in New York. He was a public benefactor and a man of great inventive genius. Peace to his ashes.

Governor Knott of Kentucky, recently pardoned James W. Morrison out of the penitentiary. He had been there for ten years, having been convicted on circumstantial evidence of the murder of W. A. Bush, in Hasen county. The man witnessed confessed that they had given faulty evidence in the case, and on their testimony an innocent man was convicted. After long years of suffering and imprisonment he was at length released, when the guilty wretches who swore his liberty away, at last confessed their wickedness.

COMMISSIONERS COURT.

Commissioners Court met last Monday, and passed the following order:

It is ordered by the court that from and after the meeting of this order upon the minutes of this court, The Tax Collector of Tyler county, shall indorse upon each piece of script received by him in payment of county taxes, 1st the date out which said scrip was received, 2nd the name of the tax payer, from whom it is received, 3rd the amount of tax paid in scrip by said tax payer, which amount shall in no exceed the amount of County Advalorem tax due by said tax payer.

It is further ordered by the court that tax collectors in making the reports of taxes collected for Tyler county, shall report in separate columns, 1st, the amount of special taxes paid by each tax payer, 2nd, the amount of advalorem tax paid in money by each tax payer, 3rd, the amount of advalorem tax paid in scrip by each tax payer.

It is further ordered by the court, that the tax collector shall prepare and attach to each report a summary or recapitulation, showing the total amount of each particular tax collected in scrip, and the amount of advalorem tax collected, in money.

It is further ordered by the court, that the tax collector shall attach his said affidavit to said report, executed before some officer authorized to administer oaths, as follows, to-wit: I, _____ tax collector in and for Tyler county, do solemnly swear, that the foregoing is a full, correct and complete statement of all taxes collected by me, except occupation taxes, for the Tyler county which have not heretofore been reported. And I further solemnly swear that the amount of scrip therein reported as having been collected by me in payment of advalorem taxes is true and correct, and that the scrip herewith mentioned in this report is the identical scrip received by me in payment of said taxes.

It is further ordered that when the tax collector presents a report of taxes collected by him for Tyler county, he shall therewith present to the court the scrip collected by him in payment of the taxes therein reported, and it shall be the duty of the court to carefully compare said scrip with the report, and if the same shall be found correct, the court shall certify to the county treasurer, who shall deposit the same in the county treasury.

It is ordered by the court that all money collected on taxes due Tyler county, except such as are due on commission thereon, shall be paid to the county treasury, in money as received by said collector, and shall be paid out by said treasurer or registered collector, according to their order of disbursement, and not otherwise except by order of this court.

Justice Reynolds, W. J. Collins and Jas. C. Houston, contractors, to build bridges, filed bonds for the faithful carrying out of their contracts.

The bridges built by D. M. Stovall and B. A. Sims across Turkey creek, the one north the other east of Woodville were received by the court, and the clerk ordered to issue drafts for amounts due.

The court then adjourned to meet again next Monday.

The millage per diem and contingent expenses of the 22nd Republican Legislature (two sessions) amounted to \$75,890 while the whole expenses of the 18th Democratic Legislature reached only \$157,088.

Governor Ireland has already begun the canvass in Western Texas, and promises soon to visit East Texas. The Governor would do well to pay particular attention to Tyler county. He may be able now to redeem himself with the people in this county and possibly restore the old Democratic vote of Tyler county. By all means, come over Governor, and talk to our people face to face. Mutual good will result from your visit both to yourself and to our people.

A cold wave has struck the North-western portion of the United States. The people of this county would do well to prepare for it. It will reach us in a few days.

The brilliant orator and rising young statesman, William Henry Crain, the nominee for Congress in the 7th district made a rousing speech in Galveston last Tuesday night.

Hon. Charles Stewart (our Charlie) and Hon. J. E. McCord, conductor for this district made eloquent and feeling speeches last Tuesday in a large and enthusiastic audience at Grayton.

We invite special attention to our advertisement, in today's issue of the Woodville High School. Principal Professor, E. W. University, at Georgetown, and son of the Rev. Dr. Furley, is favorably known to the people of Eastern Texas. Professor Furley, although 25 years of age, is an educator of considerable experience, and a capable and energetic man. He was some time Principal of Canton High School, and conducted it with much success, and we make no doubt but that he will make a complete success of the Woodville High School. He is now in his 2nd year, and the school opened on last Monday week, and now has sixty-four students, with the prospect of an increase in a few days. The principal now has competent teachers, assistance, and a full and complete permanent faculty will be organized in a few days for every department. We know of no better location for a school in East Texas for a school. It is an extremely healthy, quiet, peaceable location, easy of access by rail. It can be obtained at reasonable prices. We earnestly recommend school to the people of Tyler and East Texas generally.

A crazy woman was running the cars on last Tuesday night. Point 7 miles east of Liberty, Texas, was badly smashed, and the car and the driver were killed.

A correspondent of the Woodville, Texas, writes: "I have just received a letter from Judge, Watts, Independent candidate for Senator of this district at Liberty on the 15th inst. He has hands with the people, and is going to the top of the tree."

Dan Jones a deputy revenue collector and married man, was arrested by Marshall a few days since. Sallie Knight, a respectable widow of sixteen, and a gay Lothario was making for an officer from Marshall upon a charge of kidnapping on last Tuesday.

The District Court at Liberty on last Monday, 15th inst. civil docket was taken up on Tuesday and the criminal docket recalled next Monday. The cases are:

Two years ago, a man from Tyler county, brought by Judge of venue to Liberty.

Star service established by Jasper, from October 1st to June 30th, 1885. From Campbell to Smith's Ferry and West Hill by Jasper, 30 miles at the six times a week by an eight mile schedule. Star Service from Woodville to Jasper, from October 1, 1884, until service at Town Hill, decrease distance been miles, and render the residue of service discontinued. Jasper to West Hill, from September 30, 1884, covered by route 31, 30 miles, covered by route 31, 30 miles.

It has been remarked that farmers furnish more victims to swindlers than any other class of people, due to their trustful nature and their neglect of ordinary precautions. Being themselves, honest, and true, more readily gullible to the wiles of city-bred swindlers. The farmer of today is less vulnerable in this respect than were those of a generation ago, and it is a simple reason that he is now, more of a reader than were his predecessors, besides which he has the benefit of association, through the papers and other organizations, with his class from which he receives information that was essential to the farmers of a generation ago. The average farmer, so far as his left hand knows, is in advance, is industriously far in advance of the agriculturist of a generation ago.

RAINFALL AND DISTURBANCE.

Over ninety-two per cent of our subject as grown where the annual rainfall is above twenty five inches, sixty-two per cent where it is between thirty-five and fifty inches, and over twenty-eight per cent with an annual rainfall of forty to fifty-five inches. The important wheat region of California has less than twenty-five inches annual rainfall, but the rains come at the most favorable time for grain. Nearly half of all our wheat is grown where the rainfall during the growing season is not over twenty-five inches, and sixty-five per cent of all our wheat corn grows where the spring and summer rains do not exceed twenty-eight inches, and ninety-eight per cent where it is between fifteen and thirty inches during the growing season. Corn is especially a hot weather plant, and will not survive in Europe, where the summers have less bright sunshine, through the rains seem more favorable than in this country. Four-fifths of the national oat crop is grown where the mean annual rainfall is between

thirty and forty inches, and the spring and summer rains range between fifteen and twenty-five inches. Oats like a cooler climate than corn. They have the widest range of adaptation for all climates, and the greatest production is with the annual rainfall of fifteen to twenty inches—much less than that required by other grains. We are apt to overlook the importance of clouds when harvesting a crop, and even think of great inconvenience, yet without them during the growing season there would have been no golden grain.—Scientific American.

FOR SALE.
Chest Pine Lands.
2040 acres 2 miles south of Woodville and about 350 yards from S. & E. R. R. 784 acres near Springer in Tyler county. 352 acres six miles east of Woodville. Titles perfect, superior timber.

For particulars, apply to
H. W. WEST,
Woodville, Tex.

Milliner & Philips
Mill Merchants,
COMMERCE TEX.
Will furnish best Heavy Fine Shirts at bottom prices, and will give and put up boots, shoes, and put up boots and shoes at bottom prices, and sell good and cheap. Call on our store.

V. S. BROWN
PHOTOGRAPHER,
WOODVILLE, TEXAS.

Land and Collecting Agent,
WOODVILLE, TEXAS.

Prompt Personal Attention given to all Business placed in my hands.
References given when requested.
Correspondence Solicited.

MISS M. A. ZWIER
IMPORTER
AND MANUFACTURER OF
MILINERY AND HAIR
Goods,
111 N. Street—68
HOUSTON TEXAS.

Jasper Nursery
ESTABLISHED 1860.
By L. C. WHITE,
JASPER, TEXAS.

KEEPS excellent varieties of choice grafted and acclimated fruit trees and grape vines, warranted to be just as represented.

D. J. LAW,
HOUSTON, TEXAS.

GENERAL MERCHANDISE,
DRY GOODS, GROCERIES, &c.
Keeps everything usually kept by a large and first-class store. Will give the highest market price for cotton and country produce.

THE Commercial Hotel,
W. B. McALMODY, Prop'r,
COLMESNIL, Tex.

This house has been thoroughly refitted and re-furnished throughout and is now open for the accommodation of guests by the week, month or transient.

The rooms will be found pleasant and comfortable, and the table will be furnished with the very best the market affords, and everything will be done to make guests feel at home, while the charges will be as moderate as the times will admit.

Douglas HOTEL,
COLMESNIL, TEXAS.
B. DOUGLAS, Proprietor.
A large and commodious Two-story Building has recently been erected and attached to the old hotel, in which comfortable and pleasant rooms can be obtained. Convenient sample rooms for Commercial Travelers.
Oct.

ANNOUNCEMENT FEES.
To be paid by the applicant for the office of District Judge, Sheriff, County Clerk, County Assessor, County Treasurer, County Commissioner, and County Auditor, at the time of filing their application for the office, and if it will not appear in the Eureka.

ANNOUNCEMENTS:
For District Judge.
To the voters of the First Judicial District in a candidate for re-election to the office of District Judge of the First Judicial District, I respectfully ask your support at the ballot box next November.
W. H. FORD.

For District Attorney.
We are authorized to announce A. A. HENRY as a candidate for the office of District Attorney of the First Judicial District at the ensuing November election.

For County Attorney.
We are authorized to announce R. E. BEALE as a candidate for the office of County Attorney of Tyler county at the ensuing November election.

For Sheriff.
We are authorized to announce H. E. KIRBY as a candidate for the office of Sheriff of Tyler county at the ensuing November election.

For Sheriff of Hardin County.
We are authorized to announce J. W. DAVIS as a candidate for the office of Sheriff of Hardin County at the ensuing November election.

For District Clerk.
We are authorized to announce B. T. HYDE as a candidate for the office of District Clerk of Tyler county at the ensuing November election.

For County Clerk.
We are authorized to announce J. F. BEARD as a candidate for the office of County Clerk of Tyler county at the ensuing November election.

For Justice of the Peace.
We are authorized to announce W. H. SALL as a candidate for the office of Justice of the Peace, Beat No. 2 of Tyler county at the ensuing November election.

For Assessor.
We are authorized to announce W. C. PATTERSON as a candidate for the office of Assessor of Tyler county at the ensuing November election.

For Tax Assessor.
We are authorized to announce W. M. SHAMBERG as a candidate for the office of Tax Assessor of Tyler county at the ensuing November election.

For County Commissioner.
We are authorized to announce J. M. LOOMER as a candidate for the office of County Commissioner of Tyler county at the ensuing November election.

For County Treasurer.
We are authorized to announce J. T. MORRIS as a candidate for the office of County Treasurer of Tyler county at the ensuing November election.

For County Auditor.
We are authorized to announce J. F. SMITH as a candidate for the office of County Auditor of Tyler county at the ensuing November election.

For County Judge.
We are authorized to announce HENRY W. BEE as a candidate for re-election to the office of County Judge of this county at the ensuing November election.

Hardin County.
We are authorized to announce E. H. COPPIN as a candidate for the office of District and County Clerk of Hardin County at the ensuing November election.

WOODVILLE DRUG STORE.
D. M. STOVALL,
DRUGGIST AND PROPRIETOR.

KEEPS ON HAND A FULL STOCK OF
DRUGS, MEDICINES, LAMPS, LAMP FIXTURES, STATIONERY, PENS, INK, TOILET ARTICLES, VIOLIN AND GUITAR STRINGS, HARP, JEWELRY AND NOTIONS GENERALLY.

Goods are all fresh, being bought of First Class Houses only. The Proprietor offers the best figures in Cash. Call and see for your self, and if the article you want is not in the Store, he will at once order it for you.

S. E. PARKER,
DEALER IN
DRY GOODS, GROCERIES

DRUGS, HARDWARE, SADDLERY, BOOTS, SHOES, HATS
READY MADE CLOTHING, AGRICULTURAL IMPLEMENTS, NOTIONS, ETC., ETC.
HARDIN, HARDIN CO. TEX.

Piano, Organ, & Music HOUSE.
LOUIS GRUNEWALD,
No. 50 Main Street, Houston, Texas.
And 16 TO 22 BARONNE and 127 CANAL STREET,
NEW ORLEANS, LA.

SOLE AGENT FOR SEIKWAY, ESABE, SCHMIDT, PLEYEL and PISCHER
PIANOS.

J. R. MORRIS,
DEALER IN
HARDWARE, STOVES AND CASTINGS, RAILROAD AND MILL SUPPLIES, &c., IS AND 20 TONCH EMPLY

SOLE AGENT FOR QUAPER OAK STOVES, &c.
MORRIS & CO'S, Galveston, Texas, Houston, Texas, &c.
Scales and Avery's Pans, 19 and 51 Main St., HOUSTON, TEXAS.

THOS. GOGGAN & BRO.
GALVESTON, TEXAS.

WHOLESALE AND RETAIL DEALERS IN
Musical Instruments and Strings

Pianos, Organs and Sheet Music.

STEWART & GEISENDORFF,
DEALER IN
General Merchandise,
SOUTH OF PUBLIC SQUARE, BLAQUE STREET,
WOODVILLE, TEXAS.

Market prices paid for Cotton Wool and Hides.
Term, Strictly Cash.

G. M. LOOMER'S,
Livery Feed and Sale Stables
Woodville, Texas.

The most central point to leave the R. R. for Jasper, Newton, Angelina and Sabine counties and Western Louisiana.

S
E
P
P
2
0
8
4

Dressmaking. Fashionable cloaks, dressmaking and plain sewing, by Mrs. J. E. FURLONG, at her residence. No fitting required. Mrs. J. E. FURLONG, Woodville, Tex.

T. C. LUBBUCK, ROBT. HUNTS. F. R. Lubbock & Son DEALERS IN

Furniture, Commission Merchants, 7 MAIN STREET, HOUSTON TEXAS.

Texas Tropical Fruit Company BEAUMONT, JEFFERSON COUNTY, TEXAS.

The Texas Tropical Fruit Company BEAUMONT, JEFFERSON COUNTY, TEXAS.

MAGALES WHISKEY Is kept in this town only by P. A. DOUCETTE, J. L. KIRBY, AND R. L. PICKLE.

SKINNER & STONE COTTON FACTORS AND Commission Merchant, 71 & 73 Grand, CALVESTON, TEXAS.

S. T. ELDER GORMESNIE, TEX.

Manufacturer and Dealer in LUMBER AND DRESSING Yellow Pine

LUMBER

Warranted

Warranted

ORDERS FILED WITH DISPATCH.

EQUIPMENT PROMPT

Special Bills Cut to Order. Prices on Application. Correspondence Solicited.

WINE OF CARDUI

This pure wine is a simple vegetable extract without intoxicating qualities, and has proved to be the most astonishing TONIC FOR WOMEN known to medical science.

McEwain's Wine of Cardui is recommended for painful monthly habits, difficult, suppressed, excessive and irregular Menstruation, Whites, Falling of the Womb, Chlorosis of Life, General Debility and as a Tonic for delicate women. It was tested in 1890 cases and cured 98% of them. Its astonishing action impelled Doctors, dentists, surgeons, and returned them to their normal health. It is a safe and reliable medicine. A large degree of respectability is attached to it. It is sold in weighty bottles.

AYER'S Sarsaparilla

It cures Rheumatism, Neuralgia, Rheumatic Gout, General Debility, Catarrhs, and all disorders caused by a thin and impoverished, or corrupted, condition of the blood, expelling the blood-poisons from the system, and restoring the blood, and restoring its vitalizing power.

Dr. J. C. Ayer & Co., Lowell, Mass. Sold by all druggists. Price 25c per bottle, 50c per dozen.

DISEASE CURED WITHOUT MEDICINE

THIS MAGNETIC BELT IS WARRANTED TO CURE

Warranted

HARRIS REMEDY CO.

Special orders for Lumber promptly filled.

MISCELLANEOUS ADVERTISEMENTS

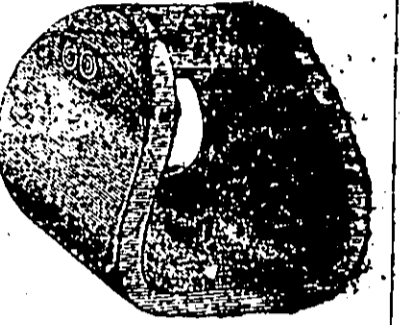
R. R. SALOON J. H. HOOKS & CO., PROPRIETORS. KONTIZE, Texas.

The finest and most choice liquors and cigars always on hand. Polite attention to customers.

Branch Houses: Austin, Waco, Colton and Brownwood.

TOM PADGETT SADDLE, HARNESS & STIRRUPE MANUFACTURER.

Wholesale Dealer In Leather, Saddlery Hardware, Boots & Shoes. FINDINGS, No. 59 Austin Street, WACO, TEXAS.



BUY TOM PADGETT'S SADDLES made at Waco.

They are kept by all leading merchants throughout the State. Name genuine unless bearing my name. Yours Truly, TOM PADGETT

The People's Store. No. 5 and 60 Liberty Avenue, HOUSTON, TEXAS.

Where can be found a complete line of Goods Furnishing Goods, Foreign and Domestic Dry Goods. at prices that will defy competition. Orders from abroad promptly attended to. E. C. WARD, PROPRIETOR.

R. D. CLAPMAN (OF WOODVILLE) REPRESENTING Wallis, Landes & Co., WHOLESALE GROCERS IMPORTERS, Galveston, Texas.

Cruse Hotel 100 yards from the Depot of the S. & E. T. Road, WOODVILLE, TEXAS.

MRS. JENNIE KALLAHER, Proprietress. Comfortable Rooms and the best fare afforded by this market will always be found here.

J. S. RICE, MANUFACTURER OF YELLOW PINE Lumber, Pine & CYPRESS SHINGLES AND GENERAL MERCHANDISE. HYATT, TEXAS.

Cash paid for cotton, hides and country produce. Special orders for Lumber promptly filled.

NEW ORLEANS ADVERTISEMENTS

CHICKERING, WEBER, MATHUSHEIK, WERLEIN

PIANOS, THE MOST POPULAR PIANOS IN THE SOUTH.

For the cash on easy monthly payments, at low rates; also rented at \$10.00 per month.

Philip Werlein, 124 Canal Street, New Orleans.

MUSIC, MUSICAL INSTRUMENTS

Competition defied. Great bargains in all the latest and best of the new styles of organs, from \$200 to \$500.

J. M. MATHIER, DEALER IN FURNITURE, CARPETS, AND MATTING AND HOUSE FURNISHING GOODS. MATRONS SPECIALTY

Direct to J. M. MATHIER, 514 Ward HOUSTON, TEX.

MAZIAN AND American Marble Monuments, Tablets, Tombstones, Tablets, etc. STONE GRANITE MONUMENTS. Cemetery Copying and Iron Railings. Finished to Order. 12 Maple Street, HOUSTON, TEXAS.

CONRADT, OPTICIAN, CYCLES and JEWELRY, 47 MAIN STREET, HOUSTON, TEXAS.

M. C. Wellborn, WHOLESALE DEALER IN GRAIN, HAY, ETC. 2, 4 & 6 TRAVIS Street, Cor. Commerce, HOUSTON, TEXAS.

Z. E. Reich, Wholesale and Retail Dealer in Glassware, Lamps, Tinware, etc. HOUSTON, TEXAS.

W. H. PALMER, (SUCCESSOR TO E. M. MILAY) W. H. PALMER, GROCER AND Cotton FACTOR, 24 and 26 Travis Street, HOUSTON, TEXAS.

FITHWARD Hotel, Houston, Texas. B. W. McCARTY, Proprietor. THIS HOTEL IS CONVENIENT TO THE DEPOT. A very fine new and beautiful room furnished. A restaurant and billiard room attached. Table unsurpassed.

McILHENRY CO., COTTON FACTORS AND Wholesale Dealers in Imported Staple AND FANCY DRY GOODS. Notions, Boots, Shoes, Hats, etc. New Building, Cor. Franklin & Fannin Sts. HOUSTON, TEXAS.

HOUSTON ADVERTISEMENTS

T. W. HOUSE, BANKER, Cotton & Wool Factor AND WHOLESALE GROCER AND Commission Merchant, 23 and 25 MAIN, And 7 & 9 Franklin Streets, HOUSTON TEX.

I invite the attention of the Trade to My Fall Stock, which is the Largest, Most Varied and Carefully Selected, ever brought to this market. My Goods were purchased from First Hands, for Special Light, and selling myself of the largest accounts and lowest prices. I am prepared to offer Great Inducements both as to Quality and Price. I am DETERMINED to meet the Closest Competition of Rio Markets.

All Orders will be Prompt and Careful Attention. Liberal advances made on all consignments of Cotton and Wool.

T. W. HOUSE. SHIP YOUR COTTON TO Wm. D. Cleveland, HOUSTON.

Prompt sales and quick returns. Strict attention to weighing and classification.

Shippers will enjoy all the facilities and advantages to be had by a strictly first-class House. Having the largest Cotton Commission Business, in a systematic and business like style.

STENCILS AND DAILY OR WEEKLY COTTON REPORTS SENT ON APPLICATION FREE OF CHARGE.

Herman T. Keller, 52 3/4 Liberty Street, HOUSTON, TEXAS.

Wholesale & Retail Grocer AND Commission Merchant. Prices as low as any House in the City. Price our goods before purchasing elsewhere.

W. H. PALMER, (SUCCESSOR TO E. M. MILAY) W. H. PALMER, GROCER AND Cotton FACTOR, 24 and 26 Travis Street, HOUSTON, TEXAS.

FITHWARD Hotel, Houston, Texas. B. W. McCARTY, Proprietor. THIS HOTEL IS CONVENIENT TO THE DEPOT. A very fine new and beautiful room furnished. A restaurant and billiard room attached. Table unsurpassed.

McILHENRY CO., COTTON FACTORS AND Wholesale Dealers in Imported Staple AND FANCY DRY GOODS. Notions, Boots, Shoes, Hats, etc. New Building, Cor. Franklin & Fannin Sts. HOUSTON, TEXAS.

BEAUMONT ADVERTISEMENTS

JOB PRINTING OF ALL KINDS NEATLY and PROMPTLY EXECUTED AT THE BEAUMONT ENTERPRISE OFFICE

All kinds of Printing done at Galveston and Houston. Orders left at the Office of the ENTERPRISE, Woodville will have prompt attention.

E. L. WILSON & CO. DEALERS IN Hardware, Stoves, Doors, Blinds, Paints, and Oils, Steam Pipes and Fittings, Belting and Hoses, etc. no 10-11

Crosby House, JOHN B. GOODHUE, Proprietor. Beaumont, Texas.

Large Sample Rooms for Commercial Travelers, and First class accommodations. Livery Stable attached. no 10-11

Hotel, E. L. WILSON, Proprietor, Beaumont, Texas.

Best accommodations to be had in the city of Beaumont. no 10-11

D. J. COLEMAN, BOOT AND SHOE MAKER, Beaumont, Texas.

Boots and shoes in the best style by skilled workmen. A new stock of material on hand. All orders promptly filled. Satisfaction guaranteed.

H. SOLINSKY, BEAUMONT TEXAS, DEALER IN GENERAL MERCHANDISE.

DRY GOODS, BOOTS, SHOES, HATS, NOTIONS, Etc. Etc. And is now receiving one of the largest spring stocks ever brought to Beaumont, and will for cash undersell any other house in Beaumont.

J. S. JORDAN, Crockett Street, Beaumont Texas.

Between Schwartz Jewelry Establishment and the House of A. Flaxman. Keep a first-class RESTAURANT and deal in confectioneries, CIGARETTES, TOBACCO and CANNED FRUITS. COUNTRY WINE.

V. W. WIESS, EXCHANGE and Collecting, WHOLESALE DEALER IN GROCERIES and Grain, And Fire Insurance Agent. Established in 1856, Beaumont, Texas.

OGDEN BROS., FANCY SALOONS, BEAUMONT TEXAS.

One opposite V-Wieess and the other on the corner, adjacent to and west of the Postoffice. Keep constantly on hand choice Wines, Liquors, Cigars, Beer, etc. no 10-11.

WOODVILLE ADVERTISEMENTS

HYDE & CO., DRUGGISTS

Paints, Oils, Chemicals, FANCY GOODS, Etc. WOODVILLE, TEXAS.

D. L. Barnes, On Main St., WOODVILLE, TEXAS.

DRY GOODS, GROCERIES AND GENERAL MERCHANDISE. AND FASHIONABLE PRICES FOR COUNTRY PRODUCE.

THE FINE ONE PRICE CLOTHIERS, HATERS & GENTS' FURNISHERS ARE SAM BROS., Houston, Texas.

GENTS' FINE GENTS' Ladies' Misses and Children's Boots and Shoes, 108 Congress St., opposite Court House, HOUSTON, TEXAS.

SENeca MILLS WE ARE NOW PREPARED TO SHIP ROUGH LUMBER

In any quantity, and of any dimensions. We have as fine a body of Long Leaf Pine, as can be found on any of the S. & E. T. R.R. And all bills will be Attended PROMPTLY and CAREFULLY.

S. P. SNELLING & CO. WOODVILLE P. O. TYLER CO. TEX.

Express Lumber Co., Manufacturers of Rough Yellow Pine Lumber, AND DEALERS IN GENERAL MERCHANDISE, HOLLISTER, Tyler Co., TEXAS.

Are now prepared to furnish Lumber on short notice at bottom prices. Give us a trial. For further information apply to SAM McGOVERN, Beaumont, Tex.

D. C. THOMPSON, DEALER IN GENERAL MERCHANDISE, Groceries, Provisions, AND DRY GOODS, THOMPSON UPPER MILL, TYLER COUNTY TEXAS.

Commercial College

of Kentucky University, Lexington Ky. Studies can be pursued in the 1st, 2nd, 3rd, 4th, 5th, 6th, 7th, 8th, 9th, 10th, 11th, 12th, 13th, 14th, 15th, 16th, 17th, 18th, 19th, 20th, 21st, 22nd, 23rd, 24th, 25th, 26th, 27th, 28th, 29th, 30th, 31st, 32nd, 33rd, 34th, 35th, 36th, 37th, 38th, 39th, 40th, 41st, 42nd, 43rd, 44th, 45th, 46th, 47th, 48th, 49th, 50th, 51st, 52nd, 53rd, 54th, 55th, 56th, 57th, 58th, 59th, 60th, 61st, 62nd, 63rd, 64th, 65th, 66th, 67th, 68th, 69th, 70th, 71st, 72nd, 73rd, 74th, 75th, 76th, 77th, 78th, 79th, 80th, 81st, 82nd, 83rd, 84th, 85th, 86th, 87th, 88th, 89th, 90th, 91st, 92nd, 93rd, 94th, 95th, 96th, 97th, 98th, 99th, 100th.

Color Gray and Fawn, dropped June, 1892, out of Belle by Reg. No. 3536, by Clinton Duke on the 10th 1892. His granddam is Dutch's Lily 1827, and his great grand dam is the famous Abers 44.

Also one thoroughbred registered Jersey cow which will drop a calf in 8 weeks and other graded cattle with calf in Bullston. For further information apply to SAM McGOVERN, Beaumont, Tex.

THOROUGH-BRED Jersey Bull BORN MARE.

That Thorough-Bred Jersey Bull, BULLSTON

Color Gray and Fawn, dropped June, 1892, out of Belle by Reg. No. 3536, by Clinton Duke on the 10th 1892. His granddam is Dutch's Lily 1827, and his great grand dam is the famous Abers 44.

Also one thoroughbred registered Jersey cow which will drop a calf in 8 weeks and other graded cattle with calf in Bullston. For further information apply to SAM McGOVERN, Beaumont, Tex.

D. C. THOMPSON, DEALER IN GENERAL MERCHANDISE, Groceries, Provisions, AND DRY GOODS, THOMPSON UPPER MILL, TYLER COUNTY TEXAS.

Commercial College

of Kentucky University, Lexington Ky. Studies can be pursued in the 1st, 2nd, 3rd, 4th, 5th, 6th, 7th, 8th, 9th, 10th, 11th, 12th, 13th, 14th, 15th, 16th, 17th, 18th, 19th, 20th, 21st, 22nd, 23rd, 24th, 25th, 26th, 27th, 28th, 29th, 30th, 31st, 32nd, 33rd, 34th, 35th, 36th, 37th, 38th, 39th, 40th, 41st, 42nd, 43rd, 44th, 45th, 46th, 47th, 48th, 49th, 50th, 51st, 52nd, 53rd, 54th, 55th, 56th, 57th, 58th, 59th, 60th, 61st, 62nd, 63rd, 64th, 65th, 66th, 67th, 68th, 69th, 70th, 71st, 72nd, 73rd, 74th, 75th, 76th, 77th, 78th, 79th, 80th, 81st, 82nd, 83rd, 84th, 85th, 86th, 87th, 88th, 89th, 90th, 91st, 92nd, 93rd, 94th, 95th, 96th, 97th, 98th, 99th, 100th.

