









### Pay as You Go

Before this year is half gone, under all signs fall, the United States Government will be collecting taxes on 1943 income as they are earned. The President, the Treasury and leaders in both the House and the Senate favor some kind of pay as you go plan for income tax collection. Specific provisions have not been worked out. The law is still in the making. But features of suggested plans are much alike and are being discussed freely.

The main idea in taxing taxes out of current income is to collect your share while the people have the money, which is annual. In the case of an employee, tax percentages likely will be deducted directly from each pay check, and pay envelopes, and the worker will never handle the money at all. Each month's deduction will be a small amount, but it will be there before the year is over. The 1943 income taxes will be due in 1944.

What About 1942 Taxes? Fully three times as many people will be paying income tax this year as ever before. The Treasury expects that the 1942 tax will be \$1.5 billion more than the 1941 tax. It is expected that the 1942 tax will be \$2.5 billion more than the 1941 tax. The 1942 tax is expected to be \$1.5 billion more than the 1941 tax. The 1942 tax is expected to be \$1.5 billion more than the 1941 tax.

Matter of fact, estimates of income tax collections for 1943 are \$1.5 billion more than for 1942. The average American who earned \$100 in 1942 will pay \$150 in 1943. The average American who earned \$200 in 1942 will pay \$300 in 1943. The average American who earned \$300 in 1942 will pay \$450 in 1943. The average American who earned \$400 in 1942 will pay \$600 in 1943. The average American who earned \$500 in 1942 will pay \$750 in 1943.

Supposing the 1942 taxes were paid over several follow-up checks in a year. The 1942 tax would be \$1.5 billion more than the 1941 tax. The 1942 tax would be \$1.5 billion more than the 1941 tax. The 1942 tax would be \$1.5 billion more than the 1941 tax. The 1942 tax would be \$1.5 billion more than the 1941 tax.

Supposing the 1942 taxes were paid over several follow-up checks in a year. The 1942 tax would be \$1.5 billion more than the 1941 tax. The 1942 tax would be \$1.5 billion more than the 1941 tax. The 1942 tax would be \$1.5 billion more than the 1941 tax. The 1942 tax would be \$1.5 billion more than the 1941 tax.

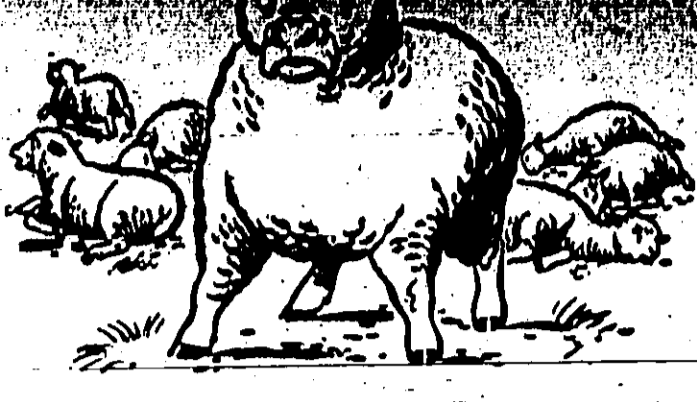
Supposing the 1942 taxes were paid over several follow-up checks in a year. The 1942 tax would be \$1.5 billion more than the 1941 tax. The 1942 tax would be \$1.5 billion more than the 1941 tax. The 1942 tax would be \$1.5 billion more than the 1941 tax. The 1942 tax would be \$1.5 billion more than the 1941 tax.

Supposing the 1942 taxes were paid over several follow-up checks in a year. The 1942 tax would be \$1.5 billion more than the 1941 tax. The 1942 tax would be \$1.5 billion more than the 1941 tax. The 1942 tax would be \$1.5 billion more than the 1941 tax. The 1942 tax would be \$1.5 billion more than the 1941 tax.

Supposing the 1942 taxes were paid over several follow-up checks in a year. The 1942 tax would be \$1.5 billion more than the 1941 tax. The 1942 tax would be \$1.5 billion more than the 1941 tax. The 1942 tax would be \$1.5 billion more than the 1941 tax. The 1942 tax would be \$1.5 billion more than the 1941 tax.

Supposing the 1942 taxes were paid over several follow-up checks in a year. The 1942 tax would be \$1.5 billion more than the 1941 tax. The 1942 tax would be \$1.5 billion more than the 1941 tax. The 1942 tax would be \$1.5 billion more than the 1941 tax. The 1942 tax would be \$1.5 billion more than the 1941 tax.

Supposing the 1942 taxes were paid over several follow-up checks in a year. The 1942 tax would be \$1.5 billion more than the 1941 tax. The 1942 tax would be \$1.5 billion more than the 1941 tax. The 1942 tax would be \$1.5 billion more than the 1941 tax. The 1942 tax would be \$1.5 billion more than the 1941 tax.

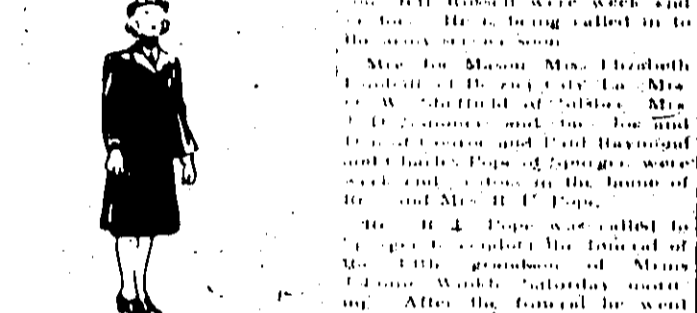


### The Ram That Knows the Rattle of Guns

We take great pride in our live stock, for we have some of the best to be found anywhere. England also takes pride in its livestock. Many of our breeds of cattle, sheep, and horses come from there. We think raising has been the same in England. It has been harder elsewhere. In England lead is scarce, and it is needed badly by the people and German armament machines. The farm animals in the fields.

### MAKE EVERY MARKET DAY BOND DAY

What You Buy With WAR BONDS. The Women's Auxiliary Volunteers (WAVs) are doing a great work and helping many in their efforts to win the war.



WOODVILLE NEWS. Wood comes from the heart of the land. The 1943 tax will be \$1.5 billion more than the 1942 tax.

WOODVILLE NEWS. Wood comes from the heart of the land. The 1943 tax will be \$1.5 billion more than the 1942 tax.

WOODVILLE NEWS. Wood comes from the heart of the land. The 1943 tax will be \$1.5 billion more than the 1942 tax.

WOODVILLE NEWS. Wood comes from the heart of the land. The 1943 tax will be \$1.5 billion more than the 1942 tax.

WOODVILLE NEWS. Wood comes from the heart of the land. The 1943 tax will be \$1.5 billion more than the 1942 tax.

WOODVILLE NEWS. Wood comes from the heart of the land. The 1943 tax will be \$1.5 billion more than the 1942 tax.

CHEROKEE - DIES. Sgt. Kimer Oates of Advanced Flying school of Arkansas, has been home visiting his parents, Miss R. K. Oates and friends. Miss R. K. Oates of Ft. Smith, spent the week end with Mrs. Van Parsons.

THE GREAT "HE" BIBLIE. A tenth century manuscript of the four Gospels started the University of Texas' famed rare book collection which now totals 20,000 volumes and ranks as one of the world's outstanding American and English collections.

WOODVILLE NEWS. Wood comes from the heart of the land. The 1943 tax will be \$1.5 billion more than the 1942 tax.

WOODVILLE NEWS. Wood comes from the heart of the land. The 1943 tax will be \$1.5 billion more than the 1942 tax.

WOODVILLE NEWS. Wood comes from the heart of the land. The 1943 tax will be \$1.5 billion more than the 1942 tax.

WOODVILLE NEWS. Wood comes from the heart of the land. The 1943 tax will be \$1.5 billion more than the 1942 tax.

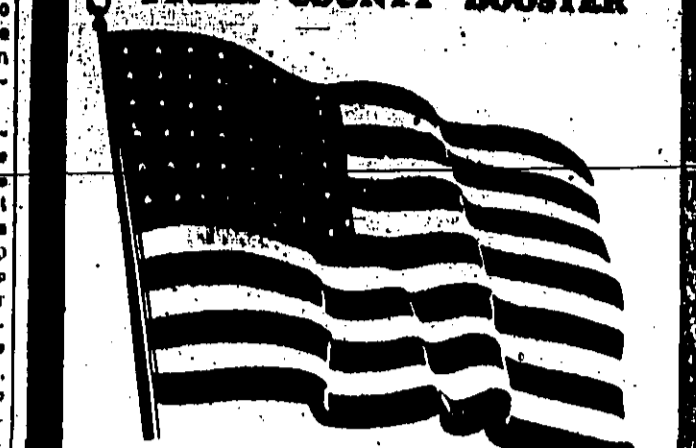
WOODVILLE NEWS. Wood comes from the heart of the land. The 1943 tax will be \$1.5 billion more than the 1942 tax.

WOODVILLE NEWS. Wood comes from the heart of the land. The 1943 tax will be \$1.5 billion more than the 1942 tax.

WOODVILLE NEWS. Wood comes from the heart of the land. The 1943 tax will be \$1.5 billion more than the 1942 tax.

WOODVILLE NEWS. Wood comes from the heart of the land. The 1943 tax will be \$1.5 billion more than the 1942 tax.

### TO BRING OLD GLORY To Every Reader of TYLER COUNTY BOOSTER



Would You Like This 3x5 FT. AMERICAN FLAG? As a reader of this paper, we are offering you an amazing opportunity to own a glorious, large "Stars and Stripes". Made of fine, durable cotton bunting, with individually sewed stripes. Stars stamped in fast colors on a rich, blue background. This beautiful flag, when opened to its full majestic spread, measures FIVE feet long by THREE feet wide.

OUR SPECIAL OFFER TO YOU. Show your neighbors that you're true blue and proud of it - by flying "Old Glory" on every American holiday. This great flag can be yours now - as a reader of this paper - at the very special price of only 98c, mailed POSTPAID to your home.

Tell The World You're Glad That You're An American. MAIL TODAY. READER'S COUPON.

This Great Offer: Add \$1.10 to your Renewal Subscription and get GREAT AMERICAN FLAG.

HOUSE BILL, 274. WOULD KILL, 1943. That the opinion of many thousands of Texans is that the proposed bill should be amended, regulated, and have their own competent examining board as provided in House Bill 274, by Representative (Major) Westbrook of Jasper, will be expressed in petitions bearing thousands of names, with the endorsement of the K. W. Chaney and Roy Le Mung, co-chairmen.

TEXAN INDIAN BRED FROM QUOTA FILLED BEFORE DRIVE. Livingston, when it comes to contributing to the Red Cross, the white man might learn something from the Indian.

WOODVILLE NEWS. Elmer Joe Poligo was home part of last week from A.M. Mrs. Alta Blier has returned from a visit with her husband who is working in Fort Arthur.

WOODVILLE NEWS. Elmer Joe Poligo was home part of last week from A.M. Mrs. Alta Blier has returned from a visit with her husband who is working in Fort Arthur.

WOODVILLE NEWS. Elmer Joe Poligo was home part of last week from A.M. Mrs. Alta Blier has returned from a visit with her husband who is working in Fort Arthur.

WOODVILLE NEWS. Elmer Joe Poligo was home part of last week from A.M. Mrs. Alta Blier has returned from a visit with her husband who is working in Fort Arthur.

WOODVILLE NEWS. Elmer Joe Poligo was home part of last week from A.M. Mrs. Alta Blier has returned from a visit with her husband who is working in Fort Arthur.

WOODVILLE NEWS. Elmer Joe Poligo was home part of last week from A.M. Mrs. Alta Blier has returned from a visit with her husband who is working in Fort Arthur.

WOODVILLE NEWS. Elmer Joe Poligo was home part of last week from A.M. Mrs. Alta Blier has returned from a visit with her husband who is working in Fort Arthur.

WOODVILLE NEWS. Elmer Joe Poligo was home part of last week from A.M. Mrs. Alta Blier has returned from a visit with her husband who is working in Fort Arthur.

WOODVILLE NEWS. Elmer Joe Poligo was home part of last week from A.M. Mrs. Alta Blier has returned from a visit with her husband who is working in Fort Arthur.

WOODVILLE NEWS. Elmer Joe Poligo was home part of last week from A.M. Mrs. Alta Blier has returned from a visit with her husband who is working in Fort Arthur.

WOODVILLE NEWS. Elmer Joe Poligo was home part of last week from A.M. Mrs. Alta Blier has returned from a visit with her husband who is working in Fort Arthur.

Keep them in Your MEDICINE CABINET. ALKA-SALTZER. ONE A DAY. NERVIN.

The World's News Seen Through THE CHRISTIAN SCIENCE MONITOR. Published by The Christian Science Society, Boston, U.S.A.



