



Single Copy 5¢

THE PINEYWOODS PRESS

VOLUME 1—NUMBER 14

WOODVILLE, TEXAS, 75979

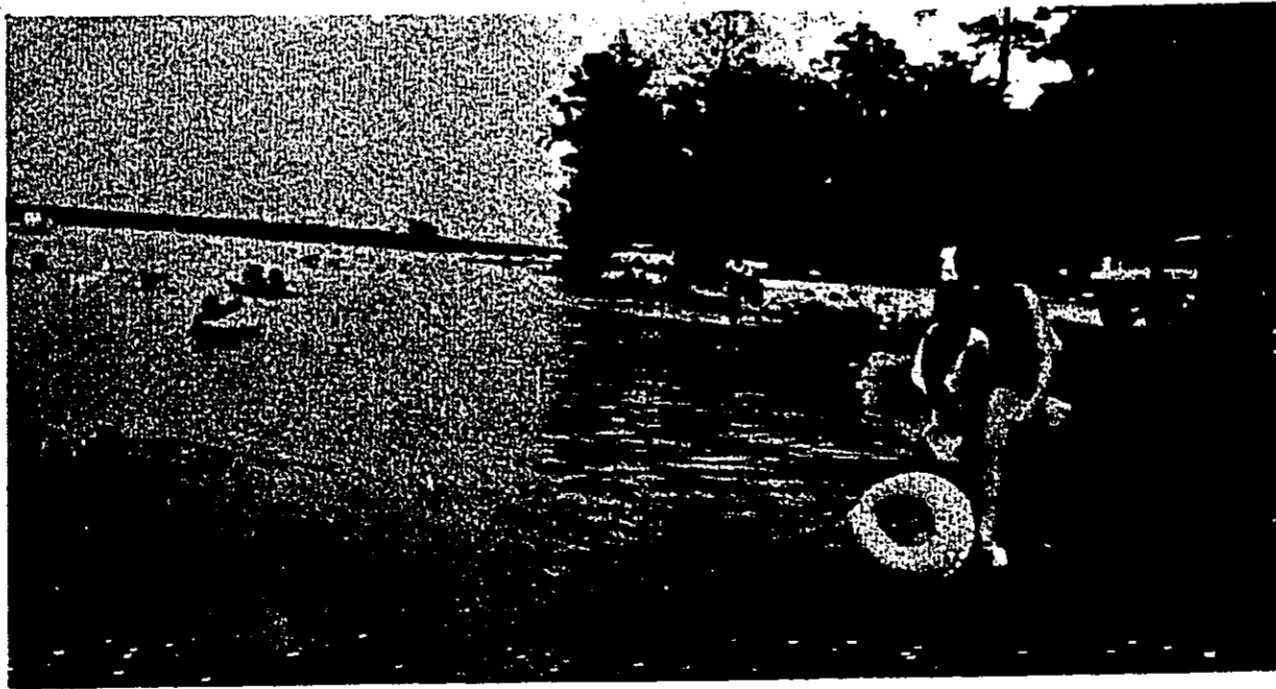
THURSDAY, JULY 4, 1963

P
I
N
E
S



P
E
N
D
S

D
E
E
P
E
R



J
U
L
Y
4
1
9
6
3

THE PINEYWOODS PRESS

Published each Thursday at Woodville, Tyler County, Texas. Subscription rates: Single copy 5 cents; \$2.50 per year; six months \$1.25 in Tyler County. Outside Tyler County, \$3.00 per year.

CHUCK STAMPS, Editor

All mail should be addressed to The Pineywoods Press at Post Office Box 837, Woodville, Texas.

Application for entry as second class mail made at the post office at Woodville, Texas.

THIS ISSUE IS PUBLISHED FOR OUR NEIGHBORS—

This issue of the Pineywoods Press is primarily intended for the people of the metropolitan areas to the south who are interested in the Piney Woods of East Texas.

We hope that we have brought you a little information concerning this rapidly growing part of Texas. No edition of this kind is ever complete, and since this is our first attempt, we know that there are many omissions and oversights.

All we can do, in any case, is to urge you to come and see the Piney Woods for yourself. The pictures, however good they might be, can never capture the beauty and splendor of this great outdoors area of Texas.

And while we do hope that it brings a message to folk in the neighboring metropolitan areas, we also believe that it will be an excellent reminder for those of us who live here that we are fortunate to be able to call the Piney Woods home.

To the people who receive this issue in the metropolitan areas, this is an invitation to come see us—any weekend.

FIRE DEPARTMENT NEEDS YOUR HELP

How much is a Fire Department worth to a community of 2,000 people?

How much does your local Fire Department save you on insurance premiums each year? Based on an \$8,000 home in the city limits of Woodville, the owner saves \$97.00 each year on insurance rates due to an efficient fire department.

Your local Volunteer Fire Department is sometimes overlooked until you need them. Your Fire Department needs YOU now!

Several months ago a used truck was purchased by the Woodville Volunteer Fire Department for the purpose of making a rural fire fighting unit. Several members of the Fire Department went on a search for a water tank to be installed on the truck. One was finally located and now the truck is equipped with a tank. What good is a truck and tank without a pump?

Efforts have been made to raise funds to fully equip this unit, but finances have fallen short, and before this unit can serve you it must be completed.

This truck, when completed, will serve as a tanker truck to supply water to the main truck where a fire plug is unavailable. When equipped with the pump it will also be used to fight grass fires.

The men in the Volunteer Fire Department are dedicated men. They receive a grand total of \$24.00 each year, provided they attend all 24 fire drills held during that time. They receive no compensation for reporting to and helping to fight fires.

If the fire siren sounds at 3 a.m. on a bitter night, the members respond. They answer some 100 calls each year in Tyler County.

These members are now asking your help. They want to complete the job started several months ago—the completion of the rural fire fighting unit. A pump, lights and siren are needed and it is estimated that \$1,000 is needed to finish the job.

Contributions are urgently needed to complete this fire fighting unit. To do so, contact any member or mail directly to the Woodville Volunteer Fire Department, Woodville, Texas.

Would you make a contribution to save YOUR house?

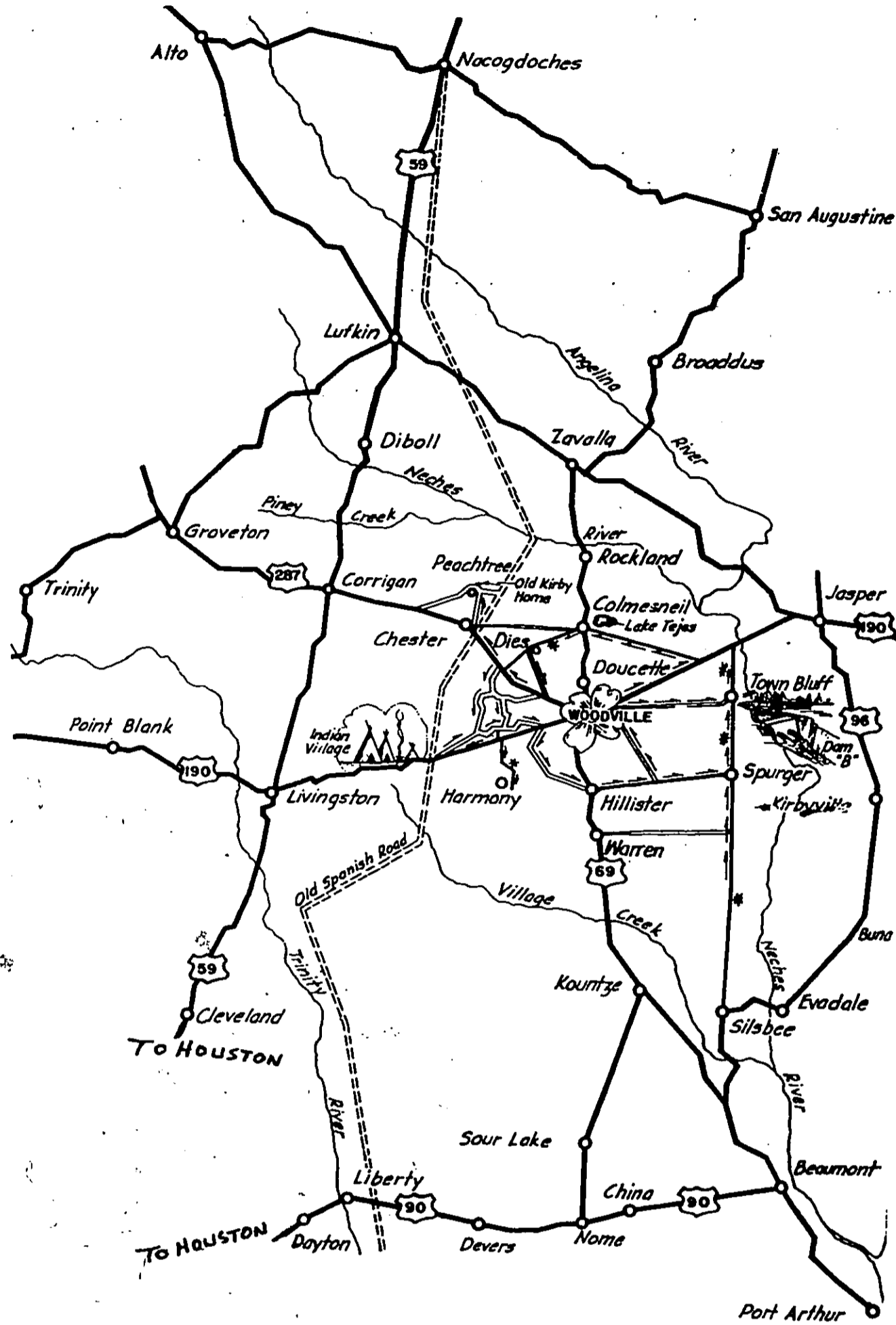
WOODVILLE VOLUNTEER FIRE DEPARTMENT

Woodville, Texas

Enclosed is my contribution of \$..... to help complete the rural fire fighting unit.

Name.....

Address.....



This map of the area is adapted from the booklet issued each spring by the Tyler County Dogwood Festival. This festival is held on the last Saturday in each March, and annually attracts several thousand visitors.

Camp Urland

Located just south of Woodville is the Trinity-Neches Boy Scout Council's Camp Urland.

The camp is used for summer encampments and for weekend swimming and camping through out the year.

Lee Tesson is camp ranger and is on duty all through the year.

For the camping season which is going on now, Jim Griffin of Winnie-Stowell is program director. Jewel Nacquin, a professional scouter, is camp director and Milton Spacek of Fannett is aquatics director.

The largest number of Scouts who have used the camp during a single year, for camping and weekends, was 8,000, Mr. Tesson says. A total of 6,000 Scouts have been in summer camp been in camp during a year.

The coupon below is for your convenience. To get the Pineywoods Press through the mail, just fill it out and dispatch it to us by either first-class mail or personal messenger.

THE PINEYWOODS PRESS
P. O. Box 837
Woodville, Texas

Please enter my subscription to The Pineywoods Press for the term checked below:

() One year at \$2.50 () Six months at \$1.25

NAME.....

ADDRESS.....

TOWN..... STATE.....

(P. S. —Don't forget to add 2% Texas sales tax)

RITEs HELD AT WARREN FOR ACCIDENT VICTIMS

Funeral services for Richard Pate, 8 of Baton Rouge, and Sue Collier, 6, Warren, were held at 4 p. m. Tuesday in the Warren Methodist Church.

The Rev. H. A. Springfield, pastor, officiated. Assisting was the Rev. Bobby Waters, Kountze, and the Rev. Colton Jones, Palestine. Burial was in Beech Creek Cemetery, near Spurger. The Edwards Funeral Home of Woodville was in charge of arrangements.

Palbearers were Jerry Springfield, Billy Coats, Tommy Dobbs, Jessie Ray, Tommy Reid, Robert Elliott, John Joyce, and Buster Wiggins.

The two children, riding in the same car, were killed instantly in a five-car accident about 6:15 p. m. Sunday, on U. S. Highway 190, about 14 miles west of Woodville.

Highway Patrolman J. E. Neuman, of Livingston, who investigated with Patrolman Dave Burford, said Mrs. Jeannette Pate was the driver of the car in which the two children were riding. Her mother, Mrs. Minnie Collier, was the fourth occupant. The car was eastbound toward Woodville, the trooper said. Both Mrs. Pate and Mrs. Collier were brought to Tyler County Hospital in Woodville.

Alton McKay Bevell, about 36, of Livingston was eastbound in his car. He was accompanied by his wife and daughter.

Tom M. Jones, of Decatur, Ill., a soldier stationed at Ft. Hood, sustained a broken arm. He was the driver of the third car and was headed west on U. S. Highway 190, toward Livingston. Thomas Joseph Pharris, of Route 1 Box 45, DeQuincy, La., also a soldier, was the second occupant in the Johns car, the trooper said.

Glen Doll Williams, of 815 Tenth, Freeport, was driving alone in a fourth vehicle and was heading west as was Manuel Phillips, of 8710 Gibbons, Houston, driver of the fifth car.

The Johns and Pate cars were totally demolished in the accident.

HOMECOMING AT NEW HOPE

Homecoming at New Hope Baptist Church east of Warren will be held July 14. History of the Church will be given.

Rev. Frank Harper and Rev. Elbert Freeman, former pastors, will be speakers.

A special invitation is extended to all former pastors, members, and friends.

Lunch will be served. Singing in the afternoon.

Mrs. Kniffin is spending three weeks in California with her daughter, Mrs. Opal Nance and sons in Burbank and Fullerton.

Cragg C. Pope Rites Tuesday

Funeral services for Cragg C. Pope, 66 of Woodville were held Tuesday at 2 p. m. in the Edwards Funeral Home Chapel in Woodville.

The Rev. C. P. Fortenberry, a Baptist minister, officiated. Burial was in Hardsell Cemetery, near Woodville.

Palbearers were Alvin Kirk, Everett Pope, C. P. Pope, Bob F. Pope, Carey Cruse and Oscar Fortenberry.

Mr. Pope died about 4:15 p. m. Sunday in the Tyler County Hospital in Woodville from injuries sustained in an auto-pedestrian accident about 45 minutes earlier.

Mr. Pope was struck by a car while he was crossing Highway 287 near his home in Woodville. Sheriff Grady Ray said. It was raining at the time of the accident. The car was driven by Woodson Deason, a Negro from Barnum, Sheriff Ray said. A native of Woodville, Mr. Pope was a World War I veteran.

YOU ARE CORDIALLY INVITED TO ATTEND

AN OPEN HOUSE

AT THE NEW

MEDICAL AND DENTAL CLINIC

Corner Kelley Boulevard and Dogwood Street

Woodville, Texas

SUNDAY, JULY 7 FROM 3 TO 5 P. M.

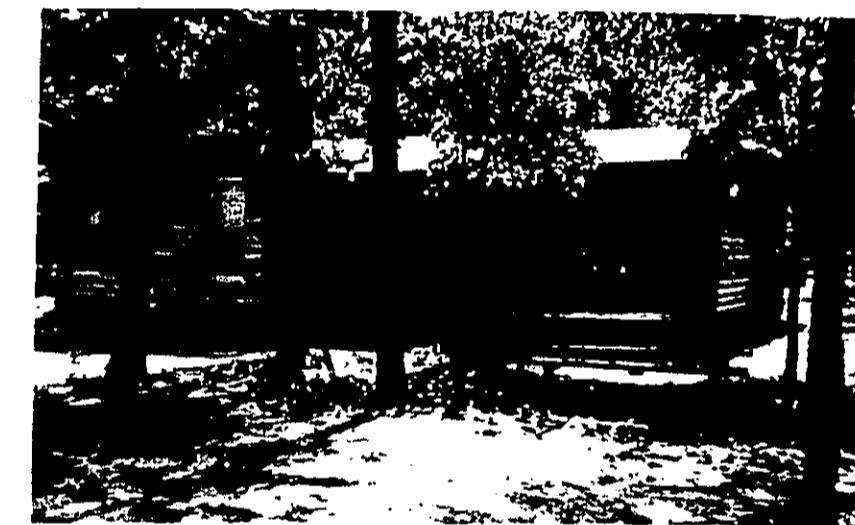
R. E. SWEARINGEN, M. D.

CURTIS GARNER, M. D.

JAMES MALCOLM RADFORD, D. D. S.

Boykin Lumber & Supply

(3 MILES SOUTH WOODVILLE, HIGHWAY 69)



VACATION CABINS FOR RENT

on

35 ACRE PRIVATE LAKE

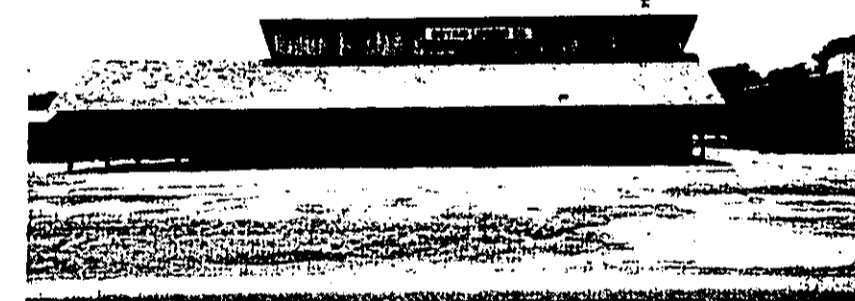
TV — Air Conditioned

Electric Kitchen (no linens)

Good Fishing — Boat Furnished

Phone BU 3-3731, Woodville

or TE 2-5934, Beaumont



BUILDING MATERIALS

Yellow Pine, Fir, Western Red Cedar

Plywood, Paint Hardware

Plumbing and Electrical Supplies

Bird Roofing, Tools, Supplies

Penta Treated Post, Poles and Lumber

Fill Sand, Top Soil, Iron Ore

Pine Grove

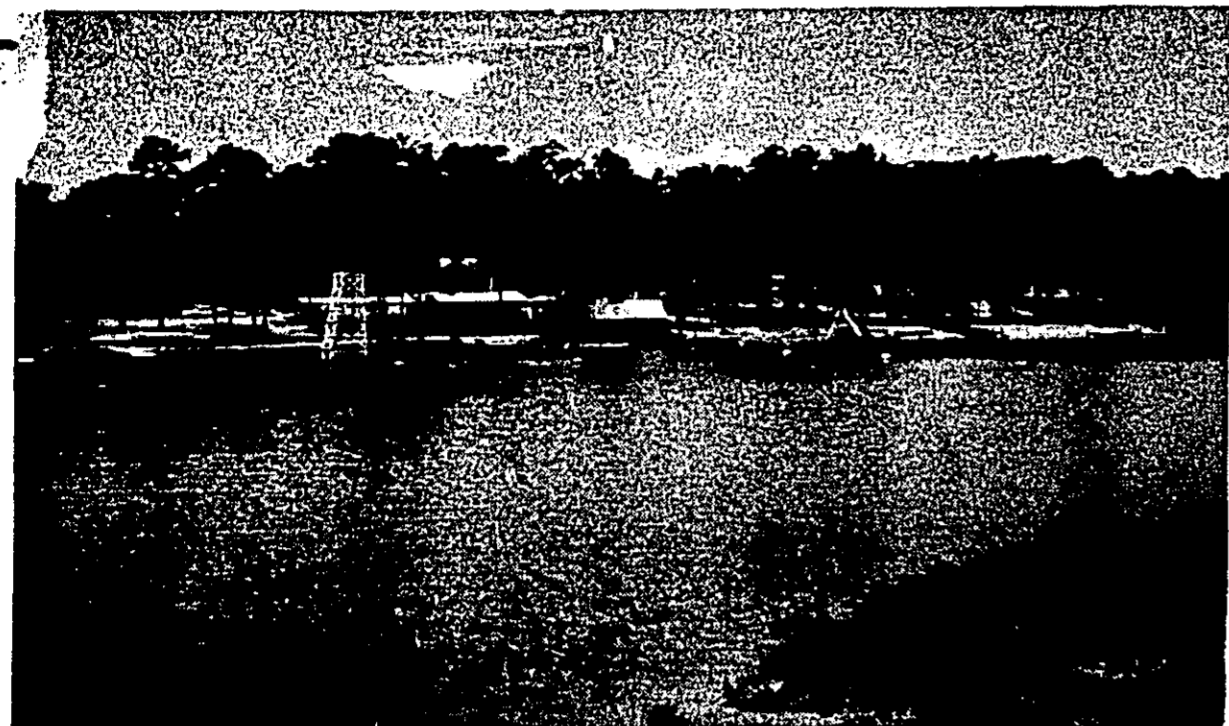
RESTRICTED ADDITION

Estate Size Lots from \$995

Easy Terms

NEW HOMES BUILT TO YOUR PLANS OR OURS

JULY 4 1963



LAKE TEJAS—Popular swimming and picnic resort near Colmesneil

Lake Tejas, located one mile east of Colmesneil, for a good many years has been one of the most popular swimming spots in this area for families, school and church groups.

Lake Tejas and the surrounding grounds are owned by Colmes-

neil Independent School.

The resort offers an excellent swimming area and along upper reaches are boating, camping and picnic areas.

In the top photo is shown the large swimming area with diving facilities, a wading pool for

the very young, and the building housing the ticket office and a concession room featuring cold drinks and a snack bar.

Lifeguards at Lake Tejas have passed Red Cross first-aid training, and supervisors at the lake are on hand to prohibit drinking of alcoholic beverages and any conduct unbecoming to a place catering to children and family groups.

Lake Tejas opens in the middle of April and remains open until early September.

WESLEYAN SERVICE GUILD DISTRICT MEETING HELD

The Beaumont Wesleyan Service Guild District Officers held a planning session at a dinner meeting in the home of Mrs. Ted Lott, District Secretary, Port Neches. Those in attendance were Mrs. O. D. Price, Mrs. R. V. Tinney of Park Avenue Methodist Orange, Mrs. W. W. Huto, St. Paul's of Bridge City, Mrs. J. R. Hennon, First Church of Pt. Neches, Miss Muriel Marshall, Mrs. Earl Bennett of North End Church, Beaumont, Mrs. Frank Durham, Woodville, and Mrs. Lott of First Church, Pt. Neches. Dates for meetings for the coming year were planned. The Beaumont District will be hostess for the Annual Guild Weekend to be held in Lakeview July 12 thru 14.

FOR BEAUTIFUL LAKESIDE LOTS AND CAMPSITES IN TYLER COUNTY —

See

Clemmons'
REAL ESTATE

Phones: BU 3-2514 BU 3-3262
BU 3-2403 BU 3-3537
Woodville, Texas

BIRDWELL DEPARTMENT STORE

Woodville's Friendly Department Store

Phone BU 3-2591
WOODVILLE, TEXAS



MFG. DIV. OF
CLAIBORNE SALES CO., Inc.
P.O. Box 277 Telephone BUtter 3-2190
WOODVILLE, TEXAS

CLAY-BURN Tile comes in 26 rich, sparkling Decor Colors, which complement each other and blend harmoniously with any color scheme. CLAY-BURN'S advanced "one-fire" process helps eliminate color variations and insures precisely on-size tile. Each tile has self-spacing lugs—Auto Spacers—for easier setting of fractional or cut tiles. Auto Spacers insure uniform joints and save installation time. CLAY-BURN'S modified cushion edge offers the sanitary advantages of flush-grouted tile, yet allows tolerance for setting-bed irregularities.

Specify CRYSTO-GLAZE for floors, decks, halls, Jrainboards, work areas—wherever you need a beautiful tile that can stand rigorous abuse.

Ceramically engineered
to meet today's
architectural standards

A & M MOTOR CO.

Woodville, Texas

PONTIAC AND TEMPEST
Sales and Service

FRIGIDAIRE
REFRIGERATORS AND FREEZERS

Phone BU 3-2534 Woodville, Texas

GASSIOTT'S

JUNIOR DEPARTMENT STORE

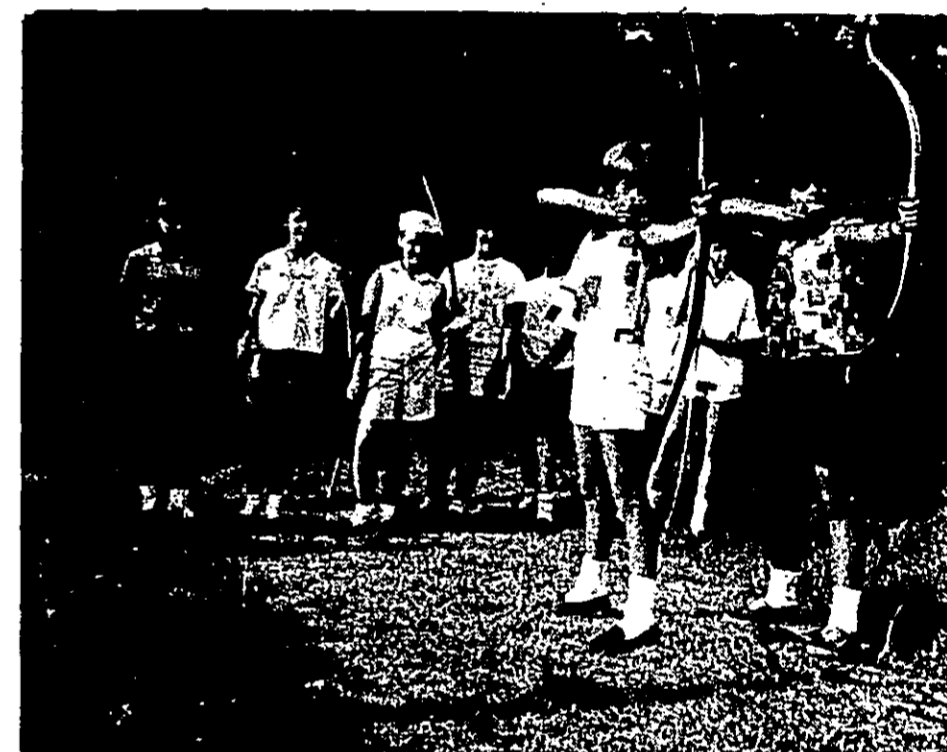


Tyler County's
Leading
5c to \$1
Store



Shop and Save Here!

RAISING THE FLAG is practiced by these Camp Fire Girls Wednesday at Camp Niwana, Beaumont Council of Camp Fire Girls camp five miles west of Woodville. The camp will begin Session Four on July 9 and openings are available for some girls in this session, according to Crispy Bodart, camp director. Interested persons may write the Beaumont Council of Camp Fire Girls, 331 College, Beaumont. Local girls may be interested to know that Virginia Rivers of Colmesneil is waterfront director this summer.



PRO
the
strat

BUL
cher
get
of the
rectl

BLUE
game
white

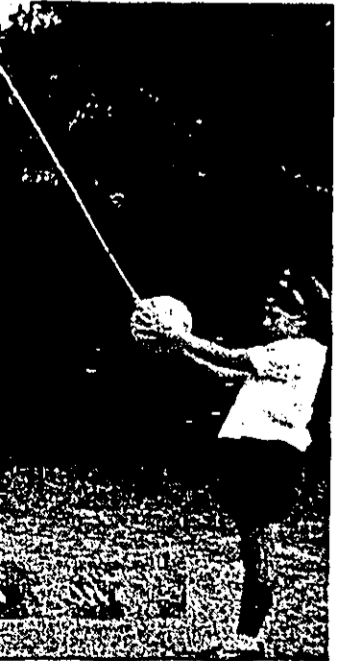
THE WOODVILLE PRESS



PROPER SHOOTING form on the archery range is demonstrated by two bow and arrow enthusiasts at the camp.



BULLSEYE—Girls on the archery range pose at the target. The arrow in the center of the target didn't come directly from the bow.



BLUEBIRDS have fun with a game of touch ball. Girl in white is counselor.

**GET YOUR TOP PRICE
FOR LAND AND LOTS**

See Us Before You Sell

SMITH'S REAL ESTATE AGENCY
Phone BU 3-3117 or BU 3-2568
WOODVILLE, TEXAS

**BUILDING MATERIALS
HOUSEHOLD FURNISHINGS**



Lumber
Paints
Pumps
Pipe, Etc.

We Have Everything You Need
To Build and Furnish Your Home

SPURGER MERCANTILE CO.
Phone HA 9-2621 Spurger, Texas

WHEN IN WOODVILLE . . .

visit

MARGUERITE'S GIFT SHOP

On Highways 69, 190 & 287 at Red Light

SEE OUR LINE OF STATUARY

"Made in Woodville"

Bird Baths

Yard Statuary

Cherub Bird Baths

St. Francis Statuary

(24 inches tall)

Other Garden Figurines and

Pedestals

J
U
L
Y
0
4
6
3

PUBLIC CAMPING, FISHING, BOATING

Plenty for Public at Dam 'B'

One of the best fishing lakes at nearly any time of the year is Dam B Reservoir, located east of Woodville on the Neches River. The lake is 10 miles long and has a 75 mile shoreline.

Since the lake's reputation for fishing is widely known, photos on this page stress other recreational facilities which are, perhaps, less well known.

Camping, boating, swimming and water skiing are also enjoyed at the lake.

U. S. Highway 190 crosses the lake at its middle point about 14 miles east of Woodville. A public park is maintained here by the Corps of Engineers.

Named Cherokee Park, this facility has camping and swimming areas as well as public rest rooms.

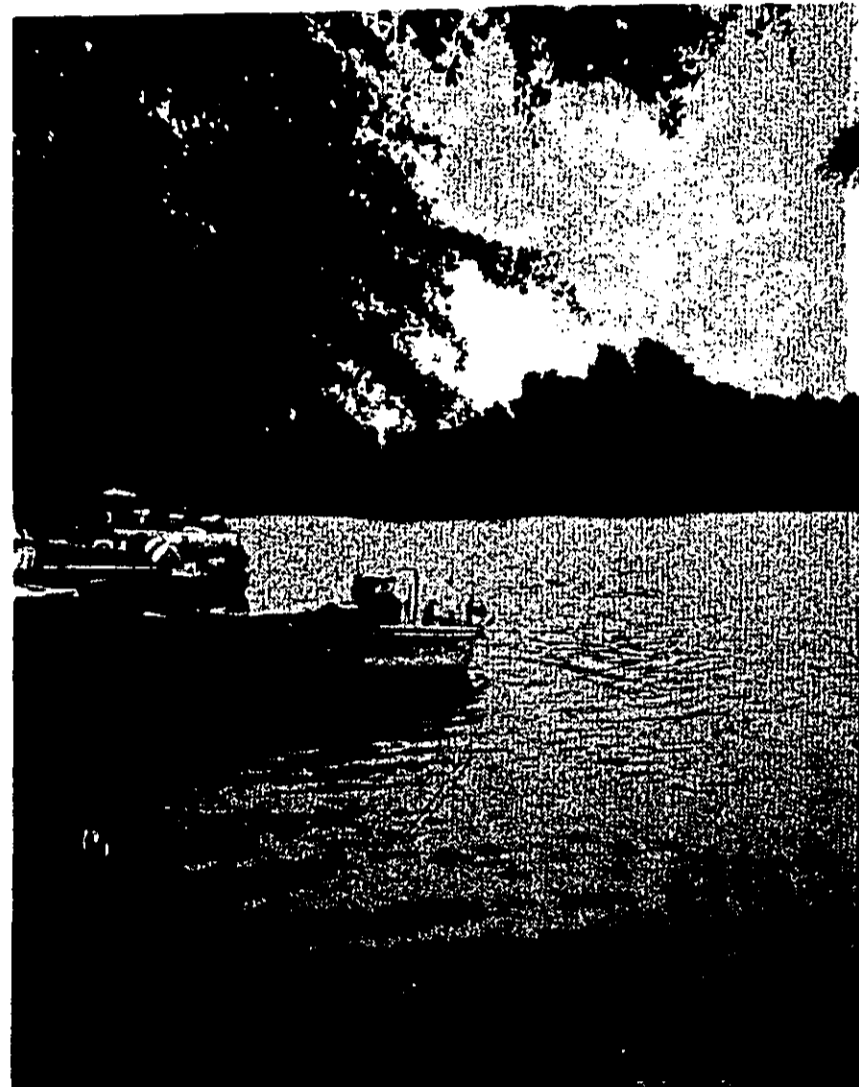
Here, too, the boat enthusiast may launch his boat and find all parts of the lake easily reached. If he wishes to camp, he can tie his boat near the camp.

On down the lake is another excellent park, Campers Cove. It stretches for several hundred yards along the lake and the same accommodations are here as at Cherokee Park.

To reach Campers Cove, take Farm Road 92 south from 190 to a sign at a dirt road. The park is just below the hill and the road is good. A hard-surfaced road is maintained through the park.

At both parks the visitor can find supplies, rent boats and cabins are available nearby.

An excellent picnic area is on FM Road 92 near the dam. This is at Bluff Park near the Corps of Engineers office.

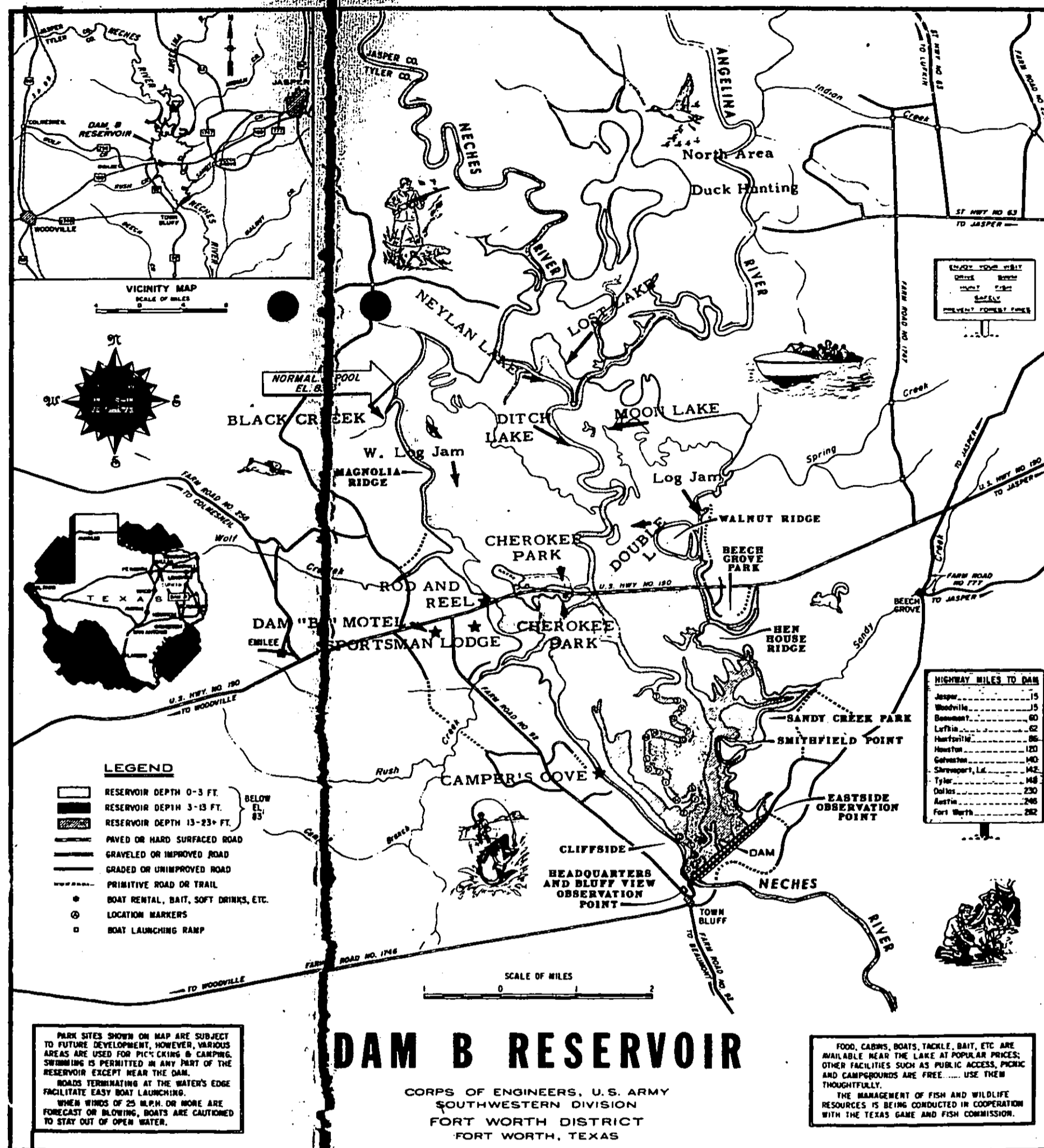
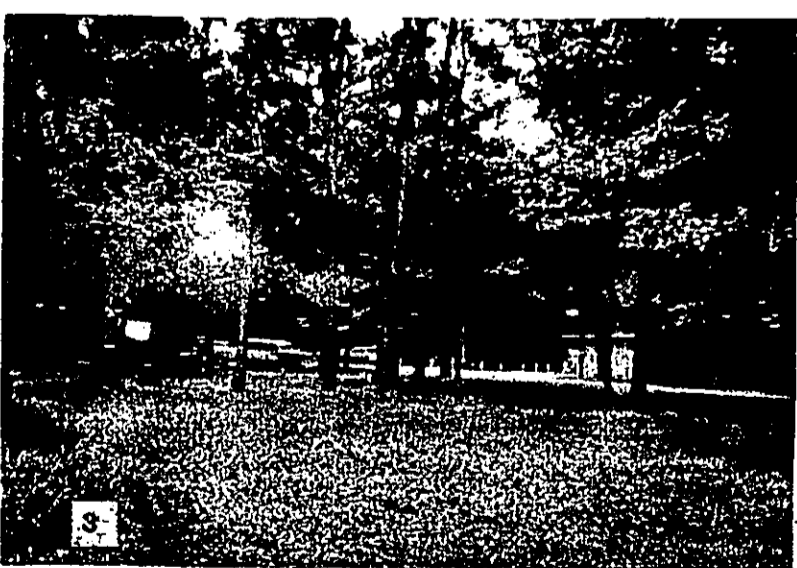
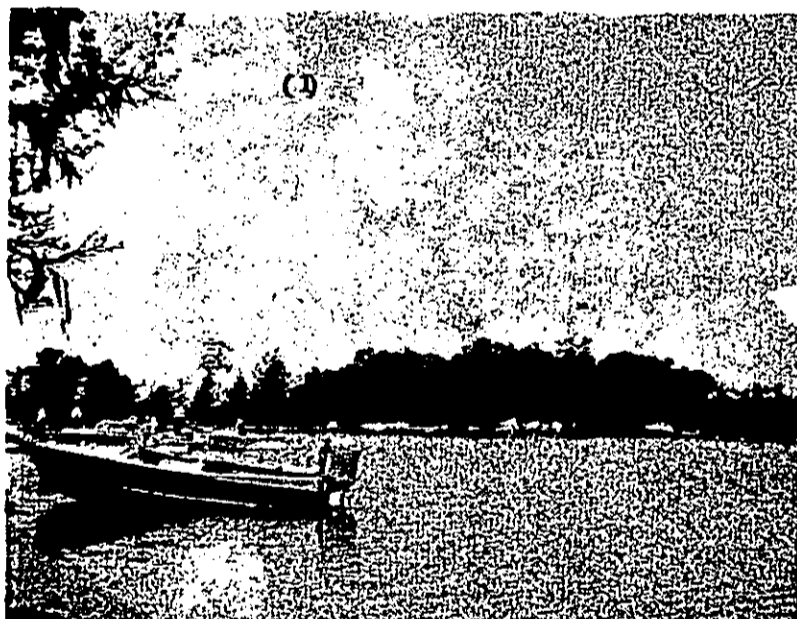


BOATS MAY BE TIED UP at shore near camping areas in Cherokee Park. This view shows a number of boats near a camping area north of Highway 190.

PHOTOS BELOW—(1) Boats may be launched nearly anywhere along shoreline at Cherokee Park. (2) View of the "Bar Pit", an inlet at Cherokee Park which is popular swimming and boat-launching area. (3) A view of part of the camping area at the park. (4) Entrance to Campers Cove Park.



PARKING AREA beside Highway 190 at Cherokee Park provides boaters and swimmers easy access to water.



DAM B RESERVOIR
CORPS OF ENGINEERS, U.S. ARMY
SOUTH-WESTERN DIVISION
FORT WORTH DISTRICT
FORT WORTH, TEXAS

This Corps of Engineers map of the Dam B Reservoir shows the various parks, and gives additional information about the lake. Good fishing areas are in the east and west log jams and in the small lakes at the upper part of the reservoir.

CAMPERS COVE PARK has two piers from which visitors may fish or use as a base for wading and swimming.



HARD-SURFACED ROAD runs along Campers Cove park. At right are cabins, privately owned, which may be rented adjacent to the park. Camping areas are also available.

TY-CO REALTY COMPANY

LAND
Timbered, Ranch, Farm, Unimproved
HOMES AND CAMPS

Phone BU 3-3622 P. O. Box 66
Courthouse Square Woodville, Texas

BUILDING SUPPLIES

FEAGIN LUMBER YARD

Building Materials for Every Need



Sherwin-Williams and Pittsburg Paints

Roofing — Sash — DOORS

Wallboards

Plumbing

Hardware

Phone BU 3-2754 Woodville

FOR THE FINEST IN DRY CLEANING



CALL
PERFECTO CLEANERS
BU 3-2518 Woodville

JULY 4 1963

CONSTRUCTION HERE PASSES MILLION DOLLAR MARK

Industrial construction now in progress in the Woodville area totals slightly over a million dollars, it is estimated.

This includes a new plant facility for Air Control Window Corporation for which ground is being cleared just north of the present plant. Actual work on the building is expected to start soon.

This is the second expansion of the Air Control plant in this year. A 40,000 square foot addition on the north side was just recently completed.

Just completed is the medical and dental clinic of Drs. Robert E. Swearingen and Curtis N. Garner, Medical Doctors, and James M. Radford, dentist. Open house will be held Sunday from 3 to 5 to which the public is invited. Landscaping is being completed this week by Paul Thomas.

The largest construction project presently underway is the Woodville Community Inn, a 72 unit motel which is to be completed this fall.

Next largest project is the rebuilding of the Woodville Lumber Company sawmill. The new and modern mill is estimated to be a \$250,000 project. A large part of this will be for the installation of modern sawmill equipment. The mill will have a capacity of 8,000 board feet an hour.

Another project nearing completion is the Shivers Memorial Library and Museum. It features the restoration of the old Cruse home and the addition of a modern addition on the rear of the house and another to the north, connected by a glass enclosed breezeway.

Work on the two new wings to Tyler County Hospital is also underway. These additions will provide space for laboratory facilities as well as extra beds.

Also under construction is the sanctuary for the First Christian Church in Woodville. It will be located on the site of the old sanctuary, part of which will be used in the new building.

The City of Woodville has a major sewage system modernization program underway, and a low-cost housing project is in view.

The new facilities to be added at Air Control Window Corporation will increase their labor force, which at the present time is approximately 250. The plant here is a subsidiary of Air Control Products, Inc., of Miami and was located on La Porte Freeway in Houston before leasing a new building two miles north of here from Tyler County Development Corporation in 1960.

Air Control Products, Inc. is in an expansion program at present. They have 60 sales branches and 15 manufacturing plants located from Florida to California and Miami to New York. In



PHOTOS AT LEFT show Air Control Window Corporation's present plant at top and site of the new addition, below. Work has started on clearing this location.



SAWMILL FRAMEWORK goes up at Woodville Lumber Company. In the two photos center, below, are views of the steel work which is about completed for the building of the mill.

BOTTOM PHOTO shows a part of the work done on the Woodville Community Inn. This project is expected to be completed in October.

the next year they plan to add 10 to 15 more.

Air Control Products, Inc. began the manufacture of builders products in a small plant in Miami in 1950. A small group of men headed by H. A. Keller and W. E. Prendergast formed a corporation and began manufacturing glass jalousie windows. In a few years they had become the world's largest manufacturer of that product. Other products were added from time to time as well as new manufacturing plants.

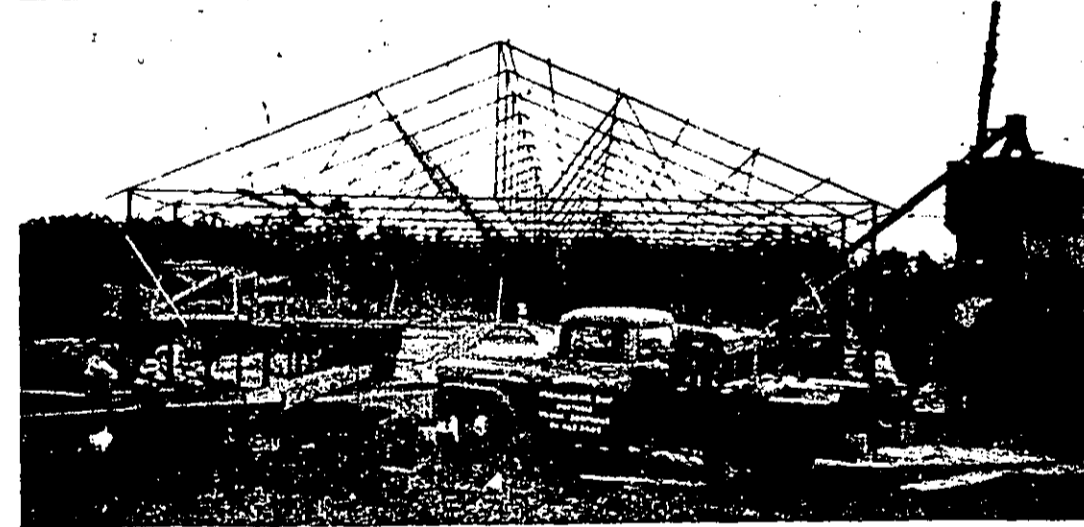
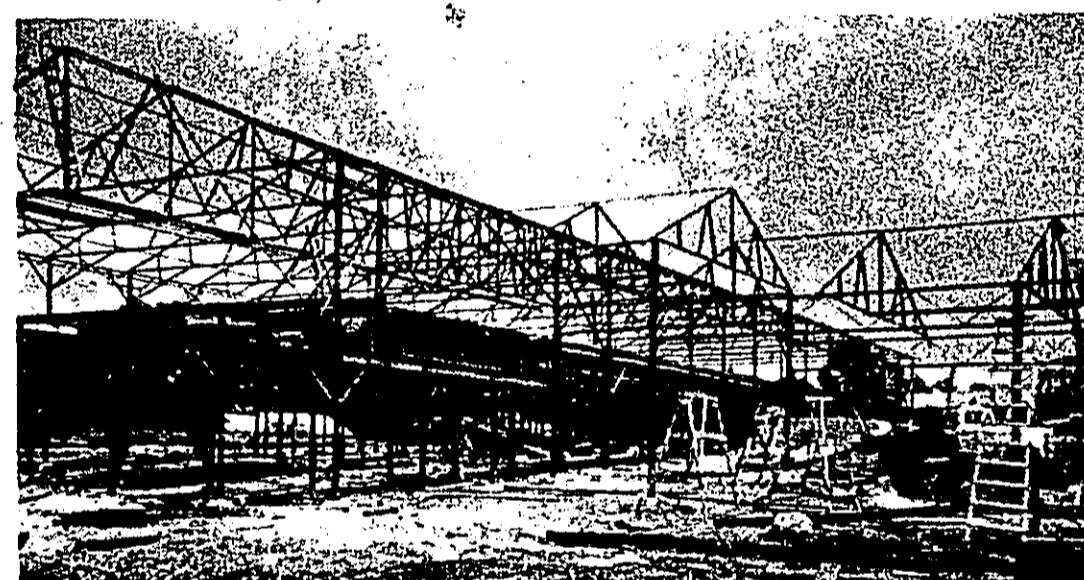
Products now manufactured in the various plants include single hung windows, sliding windows, awning windows, jalousie windows, doors, shutters, glass sliding doors, tub and shower enclosures, medicine cabinets, aluminum chairs, kitchen cabinets, rugs and carpeting, etc. wrought aluminum furniture, porch enclosures, aluminum ladders, etc.

Among the personnel at Woodville are Charles Blanks, general manager; Pete Kottong, plant manager; and Jesse Waggoner, shipping and traffic agent.

Woodville Lumber Company has long been one of the major employers of labor in the county. It had been operated since 1956 by Sam and Royce Reid and S. D. O'Brien.

Following a fire in December of last year which destroyed the sawmill part of the operation, a corporation was formed with S. H. Reid as president; Carl Riedsoe of Jasper, vice president; and Royce Reid, secretary and treasurer. The new corporation purchased the interest of O'Brien.

The planer, dry kiln and sales offices have operated since the fire. The corporation also operates Hillister Lumber Company at Hillister.



Welcome

TO TYLER COUNTY
Mr. and Mrs. J. Wood Fair
WOODVILLE, TEXAS

SULLIVAN'S

WOODVILLE, TEXAS



GENERAL ELECTRIC
REFRIGERATORS — FREEZERS
WASHERS — ELECTRIC DRYERS
AIR CONDITIONERS
HOT WATER HEATERS
TELEVISION

Franchised Dealer
and Authorized Service Station

We Service All GE Appliances

ACTION REAL ESTATE

Jimmy Freeman, Broker

TIMBERLAND — HOMES

Box 415 Phone BU 3-3630
Woodville, Texas

BEST PHARMACY "BEST IN DRUGS"

YOUR PRESCRIPTION IS
IN GOOD HANDS.



PRESCRIPTIONS
FILLED ACCURATELY AND PROMPTLY
Phone BU 3-2163 Woodville, Texas



MEDICAL AND DENTAL CLINIC—The newly constructed Medical and Dental Clinic into which Drs. Robert E. Swearingen and Curtis N. Garner moved this week is pictured above. The building is located at the corner of Kelley Boulevard and Dogwood street just north of Tyler County Hospital. Dr. James Malcolm Radford, a dentist, will become associated with the clinic Monday. Open house for the general public will be held Sunday from 3 to 5 p. m.



NEW CHRISTIAN CHURCH SANCTUARY as it will look when completed is depicted in this drawing by the designer. Work is now underway on the building. It will include, beside the sanctuary, a number of classrooms, the church office and a nursery.



SHIVERS MEMORIAL LIBRARY is nearing completion. This view shows the north extension of the building with the old Cruse home at right. The building, including the old Cruse home, will be in the shape of an L.

THE OLD CRUSE HOME, moved one block north to become part of the Shivers Memorial Library, has been restored to its former architectural splendor that made it a Woodville show place since it was built before the turn of the century.



JULY 04 63

STRIKE and SPARE

by Larry Wilkinson

In the men's Ty-Co League the Millmasters have moved out to the front by taking four games from the previously first-place Wildcats, Buzz Eaves and Gilbert Wright were chiefly responsible with 205-569 and 222-560.

Leading the Wildcats were J. D. Vinson and Peck Fortenberry with 216-555 and 209-558. The Bums breezed by the Underdogs and took all four games.

Thomas Best with 211-587 led John's Cafe Hamburgers to a 3-1 decision over Warren Butane.

In the Pin Splitters League the Bowler-ettes were once again on the rampage and swept 4 games from a stubborn Chester State Bank team. Balance was the key to success as four of the top five for the night were Bowler-etts. Letty Robinson's 489 led the way. Tyler County Motor Co. won four games from Rainey Insurance. Josie Reid was mostly responsible for this with the top effort of the night a 225-562 series. Citizens State Bank closed out the night with a 3-1 victory over Air Control.

Each week Strike and Spare will recognize ladies who have picked up those IMPOSSIBLE splits. Noncie Lane of Tyler County Motor Co. shot at the 5-7 split twice and made it both times. Others were Letty Robinson 3-10 and Betty Jo Gardner 5-10. Nice shooting, girls.

Hariett Stutts once again led the way in the Dogwood League with a 547. Sullivan's Hardware was the recipient of this as they rolled to a 4-0 victory over the Clayburn Tiles. Best Pharmacy and Howard Motor Co. battled to a 2-2 tie. Howard Motor was led by a 485 by Fredna Eaves and Best Pharmacy a 465 by Odessa Best. Woodville Florist took three from Stephens Lumber Co. despite a fine 506 series by Melba Stephens. Juanita Fortenberry rose to the occasion and picked up the 5-10 split for the only conversion of the night.

Farmers Feed led the action in the Early Birds League with a fine 1888 team series. Letty Robinson led with a fine 559 series closely followed by Gloria Childress and a 484. This was sufficient to take 3 games from the Dogwood Motel led by Bertie Norton and a 455. Goolsbee's Truck Lines and the Kittens battled to a draw. Each team won 2 games. Goolsbee was led by a 444 by Beverly Cole. Rainey Insurance beat Rainey Insurance Yes that's right Rainey's of Woodville won 3 games from its counterpart from Colmesneil.

Zelda Kelley and Odessa Best were top spare makers as each converted the 2-7.

Tyler County Couples League was sparked by a 569 by Peck Fortenberry. J. W. Reid of the Go-

getters also posted a fine 558. Dallas Pelly completes the big three with a 550. Converting splits was the order of the night and a good job was done with several good shots. They were the following, Peck Fortenberry 5-10, Lorna Phillips 5-10, I. W. Reid 5-10, Millie Pelly 6-7, Violet Vinson 3-10 and Rachael Sturrock 2-10 a nice kegling.

That's all for this week except plans are underway for a tournament for teenage bowlers. Read next weeks edition for more concerning this.

Mens Top Five
 1. Tom Best (Hamburgers) 587
 2. Buzz Eaves (Millmaster) 569
 3. Peck Fortenberry (Lads and Lassies) 569
 4. Gilbert Wright (Mill-Master) 560
 5. J. W. Reid (Go-Getters) 556

Women's Top Five
 1. Josie Reid (Tyler County Motor Co) 562
 2. Letty Robinson (Farmer's Feed) 559
 3. Hariett Stutts (Sullivan's Hardware) 547
 4. Melba Stephens (R. L. Stephens Lumber) 506
 5. Fredna Eaves (Howard Motor Co.) 485

TYLER COUNTY COUPLES LEAGUE TEAM STANDINGS

Team	W	L	T	Pts.
Baldies	15	5	1	11154
Best & Kelly	12	8	0	10648
Lads & Lassies	11	9	0	11060
Go Getters	11	9	0	11041
Mobil-Checkerettes	7	13	0	10823
Team No. 4	4	16	0	10813

High Team Series:
 Go Getters 1826
 Baldies 1809
 Mobil-Checkerettes 1779

High Game, Team:
 Baldies 633
 Go Getters 627
 Mobil-Checkerettes 618

High Series, Individual:
 Peck Fortenberry 569
 J. W. Reid 556
 Dallas Pelly 550

High Game, Individual:
 Peck Fortenberry 211
 J. W. Reid 193
 J. W. Reid, Rachel Sturrock, Dallas Pelly 190

INDIVIDUAL AVERAGES
 BY TEAMS (Handicap in parenthesis):

Player	TP	G	Avg
BALDIES			
N Pelly (39)	2150	15	143
D Pelly (23)	2514	15	167
J Burgess (59)	1727	15	115
B Burgess (39)	2167	15	144
BEST & KELLY			
J Best (45)	1624	12	135
B Best (53)	1361	11	123
Z Kelly (42)	1256	9	139
J Kelly (31)	1403	9	155
M Stephens (33)	914	6	152
R Stephens (67)	618	6	103

MOBIL-CHECKERETTES

JD Vinson (18)	2618	15	174
V Vinson (58)	1786	15	119
A Sturrock (33)	1831	12	152
R Sturrock (38)	2180	15	145

TEAM NO. 4

L Platt (30)	1882	12	156
M Platt (51)	1151	9	127
T Rinehart (34)	1366	9	151
J Rinehart (53)	374	3	124
J Klien-hammer (39)	1295	9	143
M Klien-hammer (62)	999	9	111

LADS & LASSIES

L Norton (32)	1688	11	153
B Norton (52)	1511	12	125

P Forten-berry (14) 2710 15 180
J Forten-berry (51) 1915 15 127
H Phillips (54) 368 3 122
L Phillips (57) 355 3 118

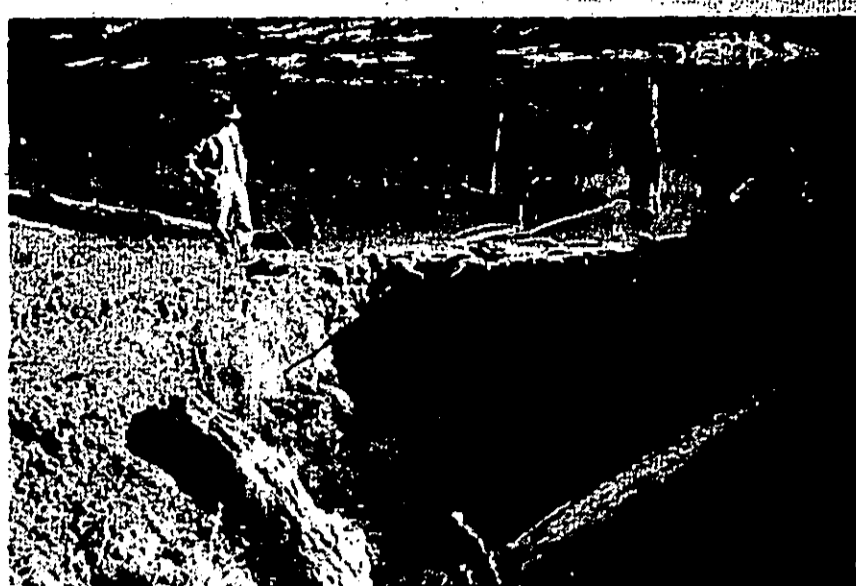
GO GETTERS

J W Reid (18)	2076	12	173
J Reid (23)	2172	13	166
M Hudson (56)	1802	15	120
L Hudson (44)	2064	15	137

HIGH GAME with handicap:
 Vinson 499
 Reid 456

HIGH SERIES with handicap:
 Vinson 1313
 Reid 1286

SPLITS PICKED UP
 June 28:
 P Fortenberry 5-10
 T Phillips 5-10
 J W Reid 5-10
 M Stephens 5-7
 V Vinson 3-10
 R Sturrock 2-10



CARE NEEDED IN PLANNING FARM POND

The primary purpose of farm ponds is to provide adequate livestock water. The pond may also be used for irrigation, erosion control or recreational purposes.

Too many people think the job is completed when the last cubic yard of soil has been moved. Very little thought is given to the maintenance needed on ponds. Maintenance is necessary on all dams and spillways. The dams and spillways should be inspected after each storm and needed repairs made. Any eroded areas should be filled and sodded.

A trickle tube is often used to protect the spillway. The trickle tube protects the vegetated spillway against saturation for long periods of time. The trickle tube consists of a small pipe through the dam with a riser on the upper end. The crest of the riser is placed below the elevation of the spillway. This keeps the spillway from getting saturated and permits grass to form a good heavy sod. Brush and trees should be controlled from the spillway and dam.

The above picture shows erosion on a pond built some time ago. The causes for this eroded condition is quite evident. The dam was not sodded properly after construction. A good grass sod on the dam and spillway will hold the soil in place. A little extra commercial fertilizer, barnyard manure, or broiler litter will insure an adequate cover. A flatter slope on this type of soil would also help prevent erosion. Most farm ponds are constructed with a one foot drop every three feet on the front slope and a one foot drop every two feet for the back slope. A three to one slope on each slope makes a much better dam. As a result, the dam will have better compaction, be less likely to erode, and will be easier to get a grass sod established.

Before building your farm pond, check the advantages of a flatter back slope. The Soil Conservation Service technicians, working through your local Long Leaf Soil Conservation District, will be glad to answer your questions.

GARDEN CLUB TO MEET
 The Woodville Garden Club will meet Wednesday July 10. at the home of Mrs. G. H. Myers for covered dish luncheon. All members are urged to attend as future plans will be discussed.

PAINTINGS SHOWN HERE
 Commissioned by Robert A. Neyland for Hardin County Savings & Loan Slisbee, Texas

CLYDE E. GRAY STUDIO
 Woodville, Texas

Overall Size 42" x 46"

Overall Size 30" x 76"

CLASSIFIED ADS

Rates for classified ads are three cents per word per insertion with a minimum charge of \$0.4. Deadline for classified is 5 p.m. Tuesday. Ads may be placed by telephone at BU 3-2402.

HEREFORDS

Will make you more money Registered stock for sale
STEVE SLOCUM
 DOUCETTE, TEXAS

Tyler County Exterminating Co.

We will rid your home of roaches, ants, silverfish, spiders, crickets, and carpet beetles.
 Free Estimates Reasonable Rates All Work Guaranteed
 P. O. Box 38 SPURGER, TEXAS
 Phones: Don Warden, HA 9-3420 James Robert Jordan HA 9-3205

FOR SALE - 1962 Studebaker Commander, 1947 Croley 1/4 ton pickup, 12-inch Dara Jones band saw, Wizard garden tiller. 1947 Harley-Davidson motorcycle. Will consider any offer, must sell. Contact Elijah Duham at BU 3-8875.

THREE MALE BEAGLE HOUNDS for sale. One year old, \$25 each. Burton Fortenberry, Colmesneil.

FOR SALE - Three bedroom home in nice neighborhood. Carpet and drapes in living room. Screened-in back porch with large carport. Beautiful corner lot with several large pecan trees. Located corner Rosebud and Temple streets, Woodville. If interested contact:
 I. V. THOMAS
 816 Blair Avenue
 Cleveland, Texas LY 2-2902

VARNER L. DURHAM
 Land Clearing Specialist
 Homesites-Lots-Acreage
 Free estimates on any job
 All Work Guaranteed
 Phone: Colmesneil TE 7-2283

FOR SALE - One 14-ft. fiberglass boat with 40 hp. Johnson motor, electric starter. For information contact James L. (Buster) Davis, phone BU 3-2238.

Artificial Breeding
 Don't risk getting a dwarf calf or a diseased cow. Breed artificially to one of the top 20 tested, proven bulls in this country. Just a call and \$8.00 does it.
 Call CHARLES NEWCOMER
 KI 7-2043 WARREN

HAVE YOU TRIED IT?
MINIATURE GOLF

BRING THE ENTIRE FAMILY AND TEST YOUR SKILL!!

Open Monday through Saturday at 6:00 P. M.
 Open Sunday at 8:00 P. M.

The whole family Plays for 50¢ on Sunday

LOCATED - WEST CITY LIMITS ON LIVINGSTON HIGHWAY

Low person each week wins carton of Coke
 First hole-in-one made on each hole each week wins free pass

Using Hwy. 69 as median line North and South, and Hwy. 190 as median line East and West, we offer the following:
NORTH WEST:
 20 acres, 6 room house, \$12,600.
 2 BR home, redecorated, in city limits.
 217 acres, 100 in pasture, on Hwy and Neches River.
 Rockland: 2 BR home on lot 100 x 473' on Hwy 69.
 62.5 acres wooded land at \$210 per acre.
 165 acres, 100 bottom land pasture, excellent hunting.
 37 acres, 1/2 minerals, well, \$7500.
 8 acres, home, \$8400.
SOUTH WEST:
 5 acres, 3 BR home, \$7875.
 2 story frame house, near business area, \$7875.
 Two 3 BR homes on Temple St. One 2 BR home on Temple St. Warren: 2 BR home on .76 acre, A-1 condition, \$9450.
 12.7 acres, home, Lake, \$21,000
 240 acres, 1/64th minerals, at \$157.50 per acre.
 3/4 acre, cyclone fence, 3 BR home in good cond., \$8925.
 Warren
 100 acres, wooded, at \$157.50 per acre.
 10 acres at \$162.50 per acre.
 57 acres at \$168.00.
 42 acres, wooded, with creek, on Hwy 190.
NORTH EAST:
 3 BR, 2 bath, 1 acre at Donette. 63 acres, old house, 1/16 royalty. 24 acres, 1/4th minerals. 77 acres at \$157.50 per acre.
SOUTH EAST:
 4 BR brick, downtown.
 2 - 3 BR brick homes, air cond \$12,600 up.
 4.26 acres, 2 BR home, \$7350.
 Fenced 1/2 acre, 2 BR home, \$7350.
 10.5 acres, 2 BR and Den home. 41 acres, good house, \$21,000.
 8 acres, 1/2 minerals, clean 3 BR home, \$8500.
 13 acres on Hwy 69, with Seneca road frontage.

Clemmons' REAL ESTATE
 Phones: BU 3-2514 BU 3-3262
 BU 3-2403 BU 3-3547
 WOODVILLE, TEXAS

Phone your ads to BU 3-2402

WHEN IN WOODVILLE
MAKE OUR STORE YOUR HEADQUARTERS

Western Auto Associate Store

LEROY DAVIS, Owner
 WOODVILLE, TEXAS

TY-CO REALTY CO.
 P.O. Box 66 Woodville, Texas
 Mrs. A. Schorlemmer
 Courthouse Square
 Phone BU 3-3622
 Mr. T. E. Phillips
 Phone BU 3-2729

Everybody... But Everybody Wants...

THE PINEYWOODS PRESS

J
U
L
O
4
3

New FM Road Let in County

The Texas Highway Commission today approved the expenditure of \$190,000 for construction of new Farm to Market Roads mileage in Tyler County as part of the 1963 FM Road Program, announced District Engineer W. E. Simmons of Beaumont.

The district engineer said 5.5 miles in this county will be involved. The work will be under the supervision of A. J. Cortez, Sr., resident engineer of Woodville.

The road will be a new Farm-to-Market road west from Highway 69 beginning one-half mile south of Hickory Creek in the southern part of Tyler County.

The work authorized for the county is part of the new \$24 million FM Road construction program just announced by the Texas Highway Commission.

The Farm-to-Market Program is a yearly roadbuilding undertaking of the Texas Highway Department under which statute specifies that \$23 million annually shall be spent for new FM construction. The 1963 program is financed for some \$24.1 million, more than a million dollars in excess of the basic statutory requirement.

New farm roads will be built in a total of 172 counties throughout the state, the total mileage being approximately 1,060. Of the new roads added to the highway system by this program, 69% are school bus route and 65% are mail routes.

Texas now has a designated Farm to Market Road System of well over 36,000 miles including the new program, most of these miles having been built since 1949 under an expanded farm road building program.

Mr. and Mrs. Howard Giebanks and Stan of Santa Anna, Calif., visited Mrs. Roanna Bishop over the weekend.

CIVIL DEFENSE QUESTIONNAIRE

The Woodville Civil Defense Committee has in the past year or so needed to know the names and locations of local citizens who are willing to accept displaced persons from other areas who are less fortunate than we are. Hurricane Carla is an example.

The Civil Defense Committee of the Woodville Chamber of Commerce is compiling a register for the purpose of placing these displaced persons in the homes of the local people as well as in the school and other available areas. If you are willing to cooperate in this project, please complete the blank below and send or hand to H. M. Durham at the Post Office in Woodville. He will compile the list and have the information available when and if needed.

Name.....
 Address.....
 Telephone No.....
 Number of persons I can take in my home.
 Adults..... Children..... Either.....
 Signed:.....



DR. G. EARL GUINN

A revival will be held at the First Baptist Church in Woodville beginning Sunday, July 7, according to Dr. Billy E. Simmons, pastor.

The services will be held at 7:30 a. m. and 7:30 p. m. daily Monday through Friday.

Evangelist for the revival will be Dr. G. Earl Guinn, president of Louisiana College at Pineville.

Billy S. Hilbun, minister of music and education at the East Grand Baptist Church in Dallas will lead the singing.

LIBRARY NOTES

The following children have finished their reading logs and are entitled to a Texas State Library Reading Certificate:

- Mary Thompson
- Betty Lou Henry
- Sharon Ruth Brown
- Billy Cards
- Jimmy Spurlock
- Kenneth Swearingen
- Cherry Swearingen
- Robert E. Lee

Persons who have had library books for some time are reminded that books do most good when circulated frequently. There is also a fine of two cents per day for overdue books.

HOME DEMONSTRATION AGENT'S COLUMN

By Mrs. Maurine Mooney

Are you interested in learning the secret of keeping cool while you work? If so, plan to attend the Cleaning Equipment Workshop to be held on Tuesday, July 9, at 1:30 p. m. in County Court Room.

Mr. A. M. Eden, representative of the Hoover Company, will present the latest information and techniques in home cleaning. He will demonstrate the use and care of all types of cleaning appliances. If you have any questions concerning the use and care of these pieces of equipment, Mr. Eden will be able to help you.

This meeting is sponsored by the Tyler County Home Demonstration Council. Any person interested is invited to attend.

Tyler County Home Demonstration Council meets, Friday, July 5, at 1:30 p. m. in County Extension Office.

Wasps are a common problem this time of year. They build their nests in and around homes --beneath eaves, on porches, behind shutters, in trees and shrubbery. And sooner or later someone gets stung.

Entomologists of the U. S. Department of Agriculture say it's difficult to discourage these insects once they've decided to set up housekeeping. But it can be done with the persistent application of the proper insecticide. Just follow the directions on the label.

Chlordane, dieldrin, and DDT are effective for this purpose. So are most aerosol bombs recommended for ant and roach control.

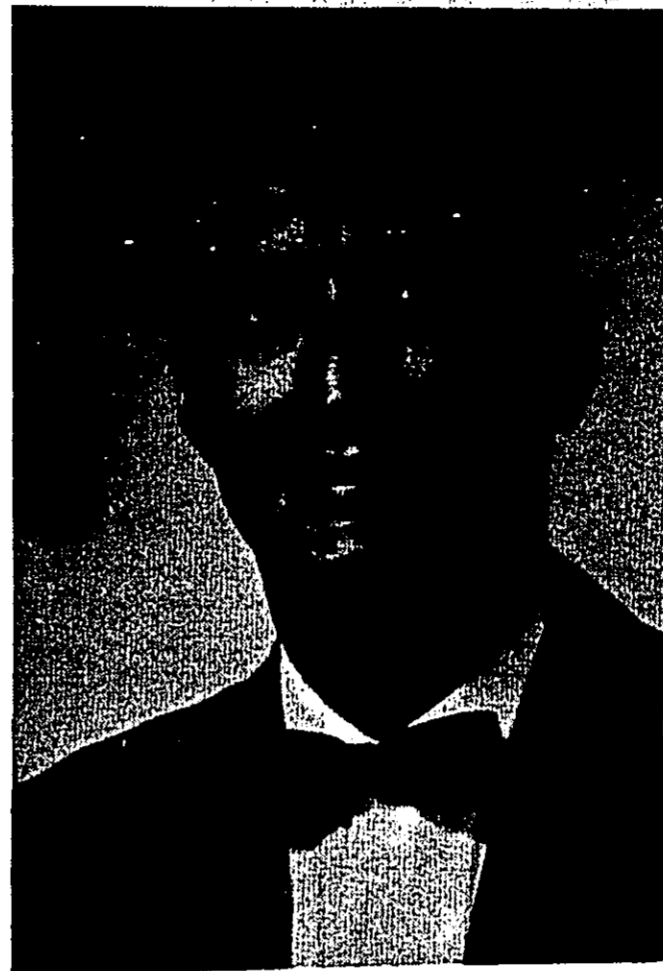
Go after the wasps at night when they are less active and most of them are in their nests. Apply the insecticide directly to the nests.

Or it may be possible to dislodge hornets' and yellow jackets' nests and dispose of them in a sack. But before you go poking around, plug the opening of the nest with absorbent cotton that has been soaked in chloroform or carbon tetrachloride. The fumes will stun the insects inside and you can work with less danger of being stung.

Remove the nest quickly. Burn or bury it. Or put it into a can containing a few tablespoons of chloroform or carbon tetrachloride and seal the can tightly.

You probably won't be able to get all of the wasps the first time. Any that escape will immediately begin to rebuild their nests near the original site. Often, other wasps will replace the original colony.

Removing the nests, spraying, or dusting will eventually discourage all comers, the entomologists say.



REV. W. E. HARROD

The United Pentecostal Church of Woodville has called a new pastor, the Reverend W. E. Harrod, whose last pastorate was in Edinburg, Texas. Reverend Harrod taught school at the Edcouch-Elsa High School while living in the Rio Grande Valley.

He was educated at the University of Oklahoma at Norman, Oklahoma and at the Apostolic

Bible Institute in St. Paul, Minnesota. He holds a Bachelor of Science degree in Business Education.

Reverend Harrod's wife, the former Betty Guinn, of Port Arthur, is also a graduate of Apostolic Bible Institute. They have a two year old son, John Alan, and reside in the 700 block of West Holly Street.

ARTS AND CRAFTS SHOW PLANNED FOR JULY 9

Friends of Tyler County Library are planning an Arts and Crafts Show to be held on Tuesday, July 9 in the Fellowship Hall of the Methodist Church in Woodville. The exhibit will be open to the public from 3:00 p. m. to 8:00 p. m. There is no charge for admission.

Anyone interested in exhibiting a painting, piece of pottery, basketry, sculpture, or any other item of handcraft is invited to bring the article to the Methodist Church by 10:00 a. m. on Tuesday so that committee members may arrange the show.

Mrs. Harry Adams, program chairman, may be contacted at BU3-3369 for additional information about the show or entries.

Mr. and Mrs. C. C. Roark, Jan and Pat visited Mrs. Roanna Bishop Friday of last week.

Mrs. I. H. Durham is in John Sealy Hospital in Galveston. She is due to undergo surgery Friday.

Free copies of "Wasps: How to Control Them" (Leaflet No. 365), a recently revised leaflet prepared by USDA's Agricultural Research Service, may be obtained by writing to the Office of Information, U. S. Department of Agriculture, Washington 25 D. C. Send a postcard with your name, address, and the title and number of publication.

CHRISTIAN CHURCH BIBLE SCHOOL STARTS MONDAY

The First Christian Church is sponsoring a Vacation Bible School for children and young people --pre school thru Jr. HL., starting Monday July 8, thru Friday July 12. It will begin at 9:00 in the morning and last until 11:30.

All youth interested in attending are invited to do so. Call BU3-2449 or BU3-2828 for transportation.

PONY LEAGUE RAINED OUT

Saturday night the Woodville Pony League romped past the Warren team with a score of 21 to 1. Johnny Dees, a lefthander, won the game for Woodville.

Monday night Woodville was scheduled to play again, but because of rain the game was postponed.

LITTLE LEAGUE SCHEDULE

- Friday, July 5:
Tigers vs. Giants
Yanks vs. Colts
- Monday, July 8:
Braves vs. Dodgers
Yanks vs. Warriors
- Tuesday, July 9:
Colts vs. Giants
Tigers vs. Cardinals

Extra copies of this issue of the Pineywoods Press are available at the Press office at 5¢ a copy while the supply lasts.