

The Tyler County Booster

Volume 37—Number 9

Woodville, Texas 75979, Thursday, November 25, 1965

Newsstand Price 10¢

DOWDY SPEAKER AT MUNICIPAL MEETING



Speaker at the Region 16 meeting of the Texas Municipal League meeting here Thursday night was Congressman John Dowdy, second from left. Others in the picture are Mayor E.W. Gassiot of Woodville, who gave the welcome address; J. Wood Fair of Woodville, who introduced Rep. Dowdy; and Mayor Jim Waters of Lufkin. Around 180 persons attended the meeting, which was held at the Community Inn. Mayor Pat Pace of Kountze, Region 16 president, presided.

Meeting Slated Monday To Organize For Action Program

A county-wide organizational meeting will be held in the district court room here Monday night to form a Community Action program, a part of the Economic Opportunity Act passed by Congress.

GRAHAM CRUSADE ATTENDED BY BUS LOAD FROM HERE

Evangelist Billy Graham Sunday told the biggest crowd of his Houston crusade—43,891—that nine billion Americans—three times the world's present population—would live in "one great metropolitan city" within six generations.

That would cause great problems if society "lasts that long," he predicted. In this generation, "the greatest social problem is the sexual explosion," the evangelist said.

Other problems such as illiteracy, poverty, racial hatred and "the new morality," which is merely "the old morality brought up to date," also exist, he continued.

"This is a generation of crisis," the evangelist exclaimed as he darted around the speaker's platform in centerfield of the Harris County Domes Stadium. Within the last 20 years, there have been 40 wars, he noted.

will be here to explain the program and help organize a county committee.

Interested citizens from all parts of the county are strongly urged to be present, State Rep. J. E. Miller, said.

The Community Action organization will be the administering agency in the county for an project to employ needy persons under the Economic Development Act.

The meeting will begin at 7:30 p.m. Monday.



J. J. Ratcliff of Fred is shown with two young bobcats which he killed Friday while squirrel hunting in the south part of Tyler County. Mr. Ratcliff and a companion were attracted to one of the bobcats when one of their dogs began barking at something up a pine tree. The hunters at first thought it was a coon, but it turned its head toward them and they saw it was a bobcat. Mr. Ratcliff shot it first with a squirrel shot, then brought it down with buckshot. Their other dog treed the other bobcat in a nearby oak tree while the first was being killed, and Mr. Ratcliff shot it with buckshot also. The two bobcats were just about grown.

PTA To Discuss Youth Problems In Meeting Monday

The Woodville Parent-Teacher Association will hold its November meeting in the elementary school auditorium Monday night beginning at 7:30 o'clock.

The meeting will be an informal, old-fashioned "town meeting" type program on the needs of the youth of the community. The purpose of the meeting is to take a candid look at the community, decide where the problems are, and then what can be done to remedy the situation.

A 15-minute film from the University of Texas Visual Instruction Bureau, "Who's Delinquent?" will be shown to help those present take an "inward look" at the community. It is hoped that the film will help spark the discussion which will follow.

PTA officers urge parents, teachers, church and civic leaders and law enforcement officers to attend the meeting. In January a follow-up meeting will report any progress which is started or accomplished toward the problem.

Kirby High School Football Banquet Set For December 3

The Kirby High School football banquet to honor the A and B squads will be held December 3 at 7:00 p.m. in the school cafeteria.

The banquet will be open to the public. Tickets may be obtained at the high school principal's office or at Jarratt's Pharmacy at \$1.50 per plate.

Guest speaker will be "Moon" Mullins, a former coach and well-known banquet speaker. Mr. Mullins coached with a Tyler County product, Cannon Miles, for several years before going into his insurance business here in living in Longview at the present time.

Tuberculin Skin Testing Slated Here

The Beaumont Tuberculosis Association will have a unit in Woodville to do tuberculin skin testing in the public schools on Thursday, December 2.

Testing will be done at the Kirby schools until 12 noon, and at the Scott schools from 1 to 3 p.m.

This is a public health measure in the preventative medicine program of the schools. However, the service is open to the public at a charge of 25 cents per person.

The reactions will be read on December 7. Those who have positive reactions are urged to have a chest x-ray made. The association emphasizes that a positive skin reaction does not indicate an active case of tuberculosis.

The mobile x-ray unit will be here on December 14. It will be at the schools until 12 noon and then at the courthouse square the remainder of the day. The charge is \$1.50.

Highway Projects In County Included In Two-Year Plan

The Texas Highway Commission has approved a two-year \$350-million Consolidated Highway Program described as one of the most important in the history of the department.

Included are 71.6 miles of improvements in Tyler County, an estimated cost of \$1,347,010.

State Highway Engineer D.C. Greer said the 1967-1968 program includes 9,469 miles of roads. He stressed the program's safety features, the protection of investment previously made from highway user tax funds and the immediate benefits that will add to the safe and efficient movement of traffic over the Texas highway system. The commission approved projects to cost \$337.9 million, with \$12.7 million being held in reserve for future assignments. The duration of the plan is two years.

The safety work included in the program represents about 70 percent of the program's total cost. This covers: widening of existing lanes; repaving of existing lanes; widening of shoulders; and separation of traffic lanes.

District Engineer John C. Kellen of Beaumont said that 601.5 miles of highways will be constructed or improved in this district at a total cost of \$21,000,000.

The district engineer said that the Tyler County projects will be under the supervision of the resident engineer, Ed Comery, 875 Industrial Drive, East of Tyler. The Tyler County projects are the following:

U.S. 287 from Wardlaw, Okla., to the north end of the county, 4.6 miles, level up, edge and seal coat, \$12,400.

U.S. 287 from the north end of the county to the south end, 4.6 miles, level up, edge and seal coat, \$12,400.

U.S. 287 from the south end of the county to the north end, 4.6 miles, level up, edge and seal coat, \$12,400.

U.S. 287 from the north end of the county to the south end, 4.6 miles, level up, edge and seal coat, \$12,400.

U.S. 287 from the south end of the county to the north end, 4.6 miles, level up, edge and seal coat, \$12,400.

U.S. 287 from the north end of the county to the south end, 4.6 miles, level up, edge and seal coat, \$12,400.

U.S. 287 from the south end of the county to the north end, 4.6 miles, level up, edge and seal coat, \$12,400.

U.S. 287 from the north end of the county to the south end, 4.6 miles, level up, edge and seal coat, \$12,400.

U.S. 287 from the south end of the county to the north end, 4.6 miles, level up, edge and seal coat, \$12,400.

U.S. 287 from the north end of the county to the south end, 4.6 miles, level up, edge and seal coat, \$12,400.

U.S. 287 from the south end of the county to the north end, 4.6 miles, level up, edge and seal coat, \$12,400.

U.S. 287 from the north end of the county to the south end, 4.6 miles, level up, edge and seal coat, \$12,400.

U.S. 287 from the south end of the county to the north end, 4.6 miles, level up, edge and seal coat, \$12,400.

U.S. 287 from the north end of the county to the south end, 4.6 miles, level up, edge and seal coat, \$12,400.

U.S. 287 from the south end of the county to the north end, 4.6 miles, level up, edge and seal coat, \$12,400.

U.S. 287 from the north end of the county to the south end, 4.6 miles, level up, edge and seal coat, \$12,400.

U.S. 287 from the south end of the county to the north end, 4.6 miles, level up, edge and seal coat, \$12,400.

U.S. 287 from the north end of the county to the south end, 4.6 miles, level up, edge and seal coat, \$12,400.

U.S. 287 from the south end of the county to the north end, 4.6 miles, level up, edge and seal coat, \$12,400.

U.S. 287 from the north end of the county to the south end, 4.6 miles, level up, edge and seal coat, \$12,400.

U.S. 287 from the south end of the county to the north end, 4.6 miles, level up, edge and seal coat, \$12,400.

U.S. 287 from the north end of the county to the south end, 4.6 miles, level up, edge and seal coat, \$12,400.

U.S. 287 from the south end of the county to the north end, 4.6 miles, level up, edge and seal coat, \$12,400.

U.S. 287 from the north end of the county to the south end, 4.6 miles, level up, edge and seal coat, \$12,400.

U.S. 287 from the south end of the county to the north end, 4.6 miles, level up, edge and seal coat, \$12,400.

U.S. 287 from the north end of the county to the south end, 4.6 miles, level up, edge and seal coat, \$12,400.

U.S. 287 from the south end of the county to the north end, 4.6 miles, level up, edge and seal coat, \$12,400.

U.S. 287 from the north end of the county to the south end, 4.6 miles, level up, edge and seal coat, \$12,400.

U.S. 287 from the south end of the county to the north end, 4.6 miles, level up, edge and seal coat, \$12,400.

U.S. 287 from the north end of the county to the south end, 4.6 miles, level up, edge and seal coat, \$12,400.

U.S. 287 from the south end of the county to the north end, 4.6 miles, level up, edge and seal coat, \$12,400.

U.S. 287 from the north end of the county to the south end, 4.6 miles, level up, edge and seal coat, \$12,400.

U.S. 287 from the south end of the county to the north end, 4.6 miles, level up, edge and seal coat, \$12,400.

U.S. 287 from the north end of the county to the south end, 4.6 miles, level up, edge and seal coat, \$12,400.

U.S. 287 from the south end of the county to the north end, 4.6 miles, level up, edge and seal coat, \$12,400.

COUNTY GOLD STAR WINNERS FETED



Roger Wardlaw and Gayla Jordan pose with Travis King and Tom Wright after being presented their Gold Stars at the annual banquet at Hotel Fredonia in Nacogdoches on November 9. (For details, see story in adjoining column.)

Stores Closed Thursday For Thanksgiving Day

Most business places in Tyler County will be closed Thursday for the observance of Thanksgiving Day. Citizens State Bank, the court house, post office and other governmental offices will observe the day as well most stores. Service stations and neighborhood groceries will be open.

Because of the holidays Thursday, the Booster is being printed one day early. Some news items may necessarily have to be held over until next week, including the results of the city revenue bond election which is being held Tuesday.

FIREMEN HELP WITH FIRE IN LIVINGSTON

Woodville Volunteer Fire Department sent a truck to Livingston Sunday night about 11:30 to aid in controlling a fire which started in the Sunset Cafe there.

Livingston firemen called on eight other nearby fire departments and all responded with trucks.

The fire destroyed the cafe, a shoe shop, and an upstairs surveying office. Water badly damaged West Brothers Department Store next door.

Livingston firemen declared that they could not have controlled the fire without outside help, and that the firemen from Woodville and other towns are due their deep appreciation for responding so quickly.

A two-foot-thick fire wall stopped flames from reaching other businesses in the block, but the West Brothers department store and the law offices of Polk County Dist. Atty. Ross Hightower suffered heavy smoke and water damage.

A hardware store and two land offices in the block escaped apparent damage.

Two Livingston firemen, Roy Hennington Jr. and Clinton Purvis, suffered minor burns of the face and hands when they tried to enter the burning building.

Cause of the fire was not immediately determined, but Fire Chief Billy Haynes said it apparently originated in the restaurant's kitchen.

The owner, Garnett Galloway, said he closed the restaurant at 10:15 p.m. The fire was discovered 30 minutes later.

The restaurant, located on the ground floor with the shoe repair shop, opened Sept. 15.

The Woodville fire department also answered a call to Elm Street Friday, where a house occupied by Hattie Telford was badly damaged by fire. They also made two runs to grass fires in the past week.

Kirby Band Again Places In First Division Marching

The Kirby High School band placed in first division in the county-wide marching band contest held in the city of Dallas on November 14.

The band, directed by Mr. J. J. Ratcliff, placed first in the county-wide contest.

The band was one of the best in the state.

The band was one of the best in the state.

The band was one of the best in the state.

The band was one of the best in the state.

The band was one of the best in the state.

The band was one of the best in the state.

The band was one of the best in the state.

Vocational Nursing School To Open At Hospital Jan. 24

The Tyler County Hospital will open its School of Vocational Nursing on January 24, 1966. Those interested in this school should contact the principal, Mrs. J. J. Ratcliff, at the hospital, 405 E. Main Street, Tyler, Texas, for an application form.

The school will accept students between the ages of 17 and 21 and must have an educational background which includes at least two years of high school.

All applicants must pass a physical examination before their applications are considered. An admissions committee will interview each candidate and evaluate their aptitude for nursing.

The tuition fee for the entire course will be \$90.00 and there will be an additional charge of approximately \$30 for books and supplies.

The course will last for one full year and at the end of that time, the students will be eligible to take the state examination for their LVN license.

Kiwanis Club's Rummage, Tree Sale Set Dec. 11

The Woodville Kiwanis Club will hold its rummage sale Saturday, December 11, on the vacant lot between Smiley's Jewelry and Palace Barber Shop buildings.

A wide selection of usable articles have been donated to the club for the sale.

At the same time, the Kiwanians will have Christmas trees for sale. Club members will also take orders for Christmas trees to be delivered that day.



Last week an auto drove into the parking place at Community Inn in front of the Housing Authority of Woodville, the brakes failed, and the auto went through the plate glass window. Notice the curve in the brick wall at lower left which was caused by the car's bumper. J.F. Stanley, of the office, was in the office but luckily was not hit by flying glass.

THE TYLER COUNTY BOOSTER

R. E. JACKSON, PUBLISHER
CHUCK STAMPS, MANAGING EDITOR
MICKI LILLEY, SOCIETY TYPIST
SHIRLEY MATHEWS, TYPIST

Published every Thursday by the Tyler County Publishing Company, Box 245, Woodville, Texas 75797, Telephone BU 5-2454.

Entered as second class matter at the Post Office in Woodville, Texas, December 11, 1950, under the Act of Congress, March 3, 1879.

Subscription Rates: In Tyler and adjoining counties, \$2.50 per year. All others, \$3.00 per year.

Member Texas Press Association
Affiliate member National Editorial Association

TEXAS PRESS ASSOCIATION
MEMBER SINCE 1965

Sunday School
Class Holds Meeting
Eleven members of the Popular Sunday School class of the First Baptist Church of Woodville met for the monthly meeting at the home of Mrs. G.W. Smith.

DON'T PAY THOSE HIGH HEATING BILLS
For Consultation Call DU 4-5212, Jasper NO OBLIGATION
GUARANTEED INSULATION SERVICE, INC.

CONNIE says... DISCOVER THE PERFECT BLENDABLES!
Elegant opera pumps turn to fashion in every exciting color. New peau de sole pumps turn heads and hearts in long, lean lines. Set spritely on the heel height you prefer... high, mid or low. A round throat tapers smoothly to a fine toes. Chic and stylish. Ready for vivid coloring to match your favorite dress. \$7.99



MAKE YOUR OWN ORNAMENTS
Cotton thread is the major ingredient in creating strange and fantastic. Snak thread in full strength liquid starch and wrap around an outfit of ballpoint pen.



OUTDOORS IN TEXAS
By Vera Sanford
A beautiful day, it was said by Mrs. C.R. Nash, the meeting of the outdoors club.

Garden Club Holds Meeting

Woodville Garden club met Wednesday last week at the home of Mrs. McCombs.

A lovely prayer was read by the chaplain, Mrs. McCombs, called "A Gardeners Thanksgiving Prayer."

The guest speaker, Mrs. Edwin White, gave a beautiful Thanksgiving talk. She emphasized the beauty all around us at this time of year.

Mrs. Hill, who was our representative to the State convention in Fort Worth, told her experience in being Ma Thicket and the Birthday Lady.

Warren and Hyatt Newsitems

Mrs. Minnie Collier and Mrs. Vera Waldrop of Warren visited both of their relatives in Baton Rouge, La. the past week for several days.

Mrs. Dolie Larkin Lee of Limberton and son, Herbert Larkin of Vidor visited Mrs. Alma Bass in Howells Nursing Home Sunday in Woodville.

Mrs. and Mrs. Amos L. Manchak and three daughters of Houston, Mr. and Mrs. H. Larkin and three daughters, Brenda, Mary and Linda of Vidor and Mrs. Dolie Lee of Limberton visited Mrs. Katie Bass Sunday.

Visitors in the home of Mrs. Vernon Unfred the past week were her children, Mr. and Mrs. Charles Unfred and baby from Houston; Mrs. Henry Gay Hampton from Winnie; Mr. and Mrs. Breck Unfred and children of Houston and Mr. and Mrs. Donald Rice of Groves.

Mr. and Mrs. Lloyd Ed Walters visited their parents, Mr. and Mrs. Dan Walters for the weekend.

Mr. Bill Taylor and son, Zachary of Port Arthur visited his mother Mrs. W.J. Taylor for the weekend.

Mr. and Mrs. John Wiggins visited her sister, Mrs. R.C. Dutton and nephew, Mr. and Mrs. Laird Maye the first of the week.

Mr. and Mrs. Bobby West have bought them a new house trailer home and moved back to Starks, Louisiana where they had to come out of the storm and waters. Mrs. and children, Lance, Rusty and baby left Monday after staying with her parents, Mr. and Mrs. O.E. Weaver for three months and the children were enrolled in the Warren school. We wish them good luck.

Mrs. Wanda Merrill Ogden of Woodville visited Mrs. W. A. Swearingen, Mrs. Williams and Mrs. H.E. McGowan of Port Arthur, Mr. and Mrs. Billie Foste of Groves visited them during the weekend.

Mr. and Mrs. G.C. Standley, Mrs. W. A. Swearingen, and Rev. and Mrs. M. Standley all went to Houston to the Astor dome to hear Billie Graham Sunday and all enjoyed the day very much.

Mr. and Mrs. Lude Lee visited his two brothers and families and Mrs. Lawrence Lee in Chester and Mr. and Mrs. Kate Lee in Moscow during the weekend.

Twirlers Sponsor Party Saturday At Community Inn

Kirby High School's twirlers are sponsoring a dancing party Saturday night at the Community Inn to which all young people are invited.

Mrs. Lester Read was in Beaumont on business Saturday.

Visitors in the home of Mr. and Mrs. W.E. Gitter the past week were Mr. and Mrs. Amos Manchak and three daughters of Houston and Mr. and Mrs. John Wiggins.

Mr. and Mrs. Earnest Fowler during the weekend were their daughters and families, Mr. and Mrs. Mike Cook and two sons of Houston, Mr. and Mrs. Sam Berrington from State Teachers College in Houston.

Mr. and Mrs. Fred Bozeman and son, Willie visited their parents, Mr. and Mrs. Walter Bozeman for the weekend.

Mr. and Mrs. Jack Collier of Beaumont visited Mr. and Mrs. A.V. Collier Sunday and Mr. and Mrs. Breck Unfred and children of Houston and Mr. and Mrs. Daniel Kincaid on her vacation.

We are sorry to report that Mr. Billie Wiggins is still in Kountze Hospital. We hope he will soon be well and home.

Mrs. Billie Wiggins was in Beaumont on business this week.

Mr. and Mrs. Herbert Larkin of Vidor visited her parents Mr. and Mrs. Bryan Williams Sunday.

Volunteer workers for the annual Salvation Army fund drive will meet for coffee and campaign instructions on Wednesday, December 1 at 9 p.m. at the Community Inn.

Color Bright - Why not deck the halls with a color that makes them glow with light? Apply a fresh coat of white or light tinted paint to make halls seem brighter. Light tints or pastels reflect more light and can be used to brighten and dark areas in your home.

ABAC Boss Night Set For Monday

The local chapter of the American Business Women's Club will hold its annual "Bosses' Night Banquet" Monday at the Community Inn, beginning time is 7 p.m.

Each member will bring her boss and one will be chosen as "Boss of the Year" and presented a trophy.

Father Walter Nigh of Houston, who has entertained here before, will present 11 songs and see if he can't get the guitar.

Miss speaker of the evening will be "State Rep. Emmet Lack of Kountze.

Miss speaker of the evening will be "State Rep. Emmet Lack of Kountze.

Miss speaker of the evening will be "State Rep. Emmet Lack of Kountze.

BUY NOW AND SAVE! Ladies Dress Shoes Flats & Heels TOM McAN, EDITH HENRY, DISCARLA, HANNAHSON Brands. Your Choice.....Special..\$1.00 pr.

Winter Shoe Store WOODVILLE, TEXAS

HOWARD MOTOR CO., Inc. since this new Olds F-85 came on the scene! We ask you: Did you ever look so good! Don't answer till you buckle up and take the wheel of a new 1966 Olds F-85. You couldn't bargain for a smoother, quieter, sweeter performing car.

INSURED SAVINGS 4 1/2% PER ANNUM SOUTHEAST TEXAS SAVINGS AND LOAN ASSOCIATION WOODVILLE, TEXAS

Grammer's Drive-In Grocery 1400 BLOCK WEST BLUFF - (Livingston Highway)

Coffee LB. 69¢

CHUCK ROAST LB. 49¢

STEW MEAT LB. 39¢

WOODVILLE-PRINTING & OFFICE SUPPLIES 213 W. BLUFF BU 3-3721

WOODVILLE-PRINTING & OFFICE SUPPLIES

WOODVILLE-PRINTING & OFFICE SUPPLIES

WOODVILLE-PRINTING & OFFICE SUPPLIES

WOODVILLE-PRINTING & OFFICE SUPPLIES

WOODVILLE-PRINTING & OFFICE SUPPLIES

BOYKIN LUMBER & SUPPLY HIGHWAY 69 SOUTH WOODVILLE

BOYKIN LUMBER & SUPPLY

BOYKIN LUMBER & SUPPLY

BOYKIN LUMBER & SUPPLY

BOYKIN LUMBER & SUPPLY

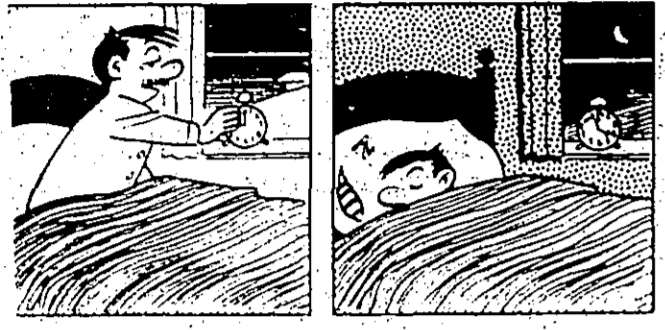
BOYKIN LUMBER & SUPPLY

THOSE WERE THE DAYS



MOTHER WORKED ALL WEEK ON THIS DINNER... BUT NOW - WOW! WHAT ARE WE HAVING FOR SUPPER TONIGHT? WE'RE BUSY - WHO KNOWS?

LITTLE FARMER



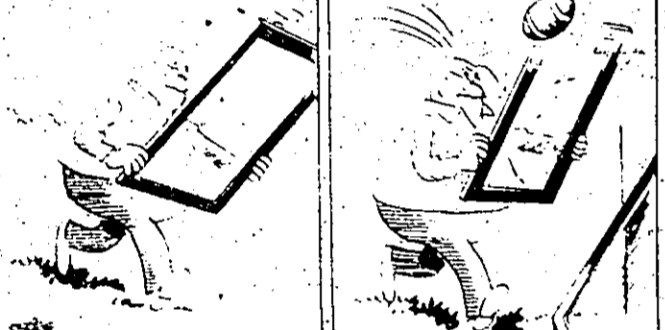
By KERN PEDERSON

Grubbs



By Warren Sattler

WINS



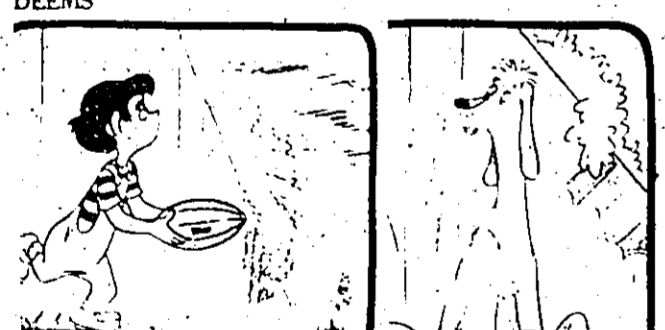
By George Wolfe

SONNY SOUTH



By COURTNEY ALDERSON

DEEMS



By TOM OKA

RURAL



By AL SMITH

Grandpa's Boy



By Brad Anderson

TYLER COUNTY BOOSTER FEATURE PAGE



NOTHING BUT THE TRUTH



Uncle CHARLEY'S Epigrins

Many a feller little sugar his him for a lump sum... CHARLEY GRANT Released by At Smith Feature Service 11-1-65

Crossword

ACROSS 40 College cheer... 19 Passageways... DOWN 1 Indefinite article... 20 Whir... 21 Twice... 22 Great Lake... 23 Depart... 24 Greasy... 25 Mineral... 26 Spring... 27 Heavy sticks... 28 Last blood... 29 Superlative ending... 30 Toward... 31 Shattered side... 32 The (Sp.)... 33 Trial... 34 Had been... 35 Region... 36 River (Sp.)... 37... 38... 39... 40... 41... 42... 43... 44... 45... 46... 47... 48... 49...

News Of Dam B Folks

By MRA G. R. RICE Right now, all who can are deer hunting... Mr. and Mrs. C.E. (Curley) Seaman were happy to have their son from Beaumont with them a few days the past week.

Those present are: Mr. and Mrs. James Schaefer and... Mr. and Mrs. Henry C. Padgett attended the funeral in Jasper Wednesday of Mrs. Padgett's aunt.

Mr. and Mrs. H.H. Hite and wife drove up to see their son... Mr. and Mrs. C.H. Hamm and wife are in the hospital.

Mr. and Mrs. H.H. Hite and wife... Mr. and Mrs. C.H. Hamm and wife... Mr. and Mrs. C.H. Hamm and wife...

BOOSTER BUSINESS & PROFESSIONAL DIRECTORY

"QUALITY FURNITURE" Mann Furniture Co. "FURNITURE ADMIRAL APPLIANCES" 804 W. BLUFF WOODVILLE, TEXAS

WOODVILLE MATTRESS & UPHOLSTERY COTTON & INDEPENDENCE MATTRESSES FREE PICKUP & DELIVERY FREE ESTIMATES 108 Elm Street, Woodville, Texas BU 8-8882

Polly's TV & Appliances 205 W. BLUFF BU 9-8466 WOODVILLE, TEXAS

JARROTT'S PHARMACY BU 9-8350 Woodville, Texas

GLOBE-MANN INS. AGENCY "BE SURE TO INSURE" 104 W. Bluff Woodville, Texas

Woodville T.V. Service Ctr. 210 East Bluff St. BU3-3675 Woodville, Texas

Helpner's Pharmacy 218 S. MAGNOLIA WOODVILLE, TEXAS

"Everything for the Sportsman" IRVIN'S SPORT SHOP ALL THE LIVE BAITS Woodville BU3-3811 GEORGE A REYNOLDS BOOKKEEPING & TAX SERVICE 104 S. CHARLTON BU3-2150 WOODVILLE

NOW! '66 CAPRICE BY CHEVROLET



A whole new series of elegant Chevrolets with a whole new choice of features even some of the most expensive makes don't offer. See the new '66 Chevrolet: Chevelle, Chevy II, Corvair and Corvette at your Chevrolet dealer's.

HOWARD MOTOR CO., Inc. WOODVILLE, TEXAS

Mont Neches Lake Estates Not One But TWO Big Resorts On Neches River. Located at Town Bluff adjacent to Corps of Engineers Office at Dam B, approximately 3000 feet frontage on Neches River. Choice Lots on High Hill overlooking miles of water in Dam B Reservoir... \$1495.00 SEE OR CALL J. H. (RED) PHILLIPS AT TOWN BLUFF LAKE ESTATES ON OLD BARLOW FERRY ROAD. Telephone HA 9-3651. Barlow Lake Estates Beautiful wooded waterfront lots on Neches River or Barlow Lake. Approximately 4000 feet sandy beach. All lots wooded and well drained. Barlow Lake one of most beautiful inland lakes in Tyler County. Water Front Lots \$995.00 SENSIBLY RESTRICTED FOR PROPERTY OWNERS PROTECTION. SALESMAN ON PROPERTY SEVEN DAYS A WEEK.

CHURCH DIRECTORY	Ogden Chevrolet COLMESNEIL, TEXAS	SUNDAY'S SERMON BEING HELPFUL How often have you passed up the opportunity to do something for your fellow man? Have you refused to take part in some community effort? Have you looked the other way when a friend or a neighbor was obviously in need? Maybe you're like the few who never take the time to do anything at all without first asking, "What's in it for me?" And, perhaps you're like the denouncers who criticize the "doers" and suggest they participate in numerous activities merely for the "publicity" involved. Each man seeks his own reward. If you tell yourself you don't care about anyone or about anything, your heart and your conscience will eventually betray you. Someday you'll have a cry about searching for a reason or an excuse to reward. When you do, you'll know there isn't any possible way to help yourself at the same time.	A&M Motor Co. Inc. BU 3-2554 WOODVILLE	DEATHS
	Mann Furniture 204 W. Bluff BU 3-5740	BEST PHARMACY BU 3-2155 Woodville	McClure's Furniture Store BU 3-2282 305 N. Magnolia Woodville	
	GLOBE-MANN Insurance Agency BU 3-2528 104 W. Bluff Woodville	Chester State Bank CHESTER, TEXAS	J. O. BEST'S SERVICE STATION EXCO Products DU-2111 103 N. Magnolia Woodville	
	JACK LANE FORD, INC. BU 3-2526 Chester Hwy Woodville	JOHNNY & JACKS BU 3-3555 Jasper Hwy Woodville	Linwood Bowling Lanes BU 3-2121 303 N. Magnolia Woodville	
	Tyler County Booster	J.B. BEST & CO. BU 3-2124 Woodville	DAVIS Food Market WARREN, TEXAS	
	CITIZENS STATE BANK BU 3-2561 102 W. Bluff Woodville	BIRDWELLS Dept. Store	C.A. WILLIAMS Sporting Goods & Cafe Dam B	
		ATTEND CHURCH SUNDAY	John's Restaurant BU 3-2353 Beaumont Hwy Woodville	
			Gassiot's BU 3-2160 120 S. Charlton Woodville, Texas	
			Attend the Church of your choice this Sunday!	

ST. PAUL'S EPISCOPAL CHURCH Pastor: Rev. L. G. Spurgeon, pastor Worship Service 10 a.m. Sunday School 10 a.m. Ladies Bible Study 2 p.m. Men's Bible Study 7 p.m.	ST. MICHAEL'S EPISCOPAL CHURCH Pastor: Rev. L. G. Spurgeon, pastor Worship Service 10 a.m. Sunday School 10 a.m. Ladies Bible Study 2 p.m. Men's Bible Study 7 p.m.	ST. PETER'S EPISCOPAL CHURCH Pastor: Rev. L. G. Spurgeon, pastor Worship Service 10 a.m. Sunday School 10 a.m. Ladies Bible Study 2 p.m. Men's Bible Study 7 p.m.	ST. JOSEPH'S EPISCOPAL CHURCH Pastor: Rev. L. G. Spurgeon, pastor Worship Service 10 a.m. Sunday School 10 a.m. Ladies Bible Study 2 p.m. Men's Bible Study 7 p.m.	ST. ANNE'S EPISCOPAL CHURCH Pastor: Rev. L. G. Spurgeon, pastor Worship Service 10 a.m. Sunday School 10 a.m. Ladies Bible Study 2 p.m. Men's Bible Study 7 p.m.	ST. MARY'S EPISCOPAL CHURCH Pastor: Rev. L. G. Spurgeon, pastor Worship Service 10 a.m. Sunday School 10 a.m. Ladies Bible Study 2 p.m. Men's Bible Study 7 p.m.
--	---	---	--	--	--

CHURCH OF CHRIST Pastor: Rev. L. G. Spurgeon, pastor Worship Service 10 a.m. Sunday School 10 a.m. Ladies Bible Study 2 p.m. Men's Bible Study 7 p.m.	CHURCH OF CHRIST Pastor: Rev. L. G. Spurgeon, pastor Worship Service 10 a.m. Sunday School 10 a.m. Ladies Bible Study 2 p.m. Men's Bible Study 7 p.m.	CHURCH OF CHRIST Pastor: Rev. L. G. Spurgeon, pastor Worship Service 10 a.m. Sunday School 10 a.m. Ladies Bible Study 2 p.m. Men's Bible Study 7 p.m.	CHURCH OF CHRIST Pastor: Rev. L. G. Spurgeon, pastor Worship Service 10 a.m. Sunday School 10 a.m. Ladies Bible Study 2 p.m. Men's Bible Study 7 p.m.	CHURCH OF CHRIST Pastor: Rev. L. G. Spurgeon, pastor Worship Service 10 a.m. Sunday School 10 a.m. Ladies Bible Study 2 p.m. Men's Bible Study 7 p.m.	CHURCH OF CHRIST Pastor: Rev. L. G. Spurgeon, pastor Worship Service 10 a.m. Sunday School 10 a.m. Ladies Bible Study 2 p.m. Men's Bible Study 7 p.m.
---	---	---	---	---	---

Deaths

Jim Sheffield Rites
Held in Chester
Funeral services for Jim Sheffield, 43, of Houston were held at 11 a.m. Saturday at the Mount Zion Church near Chester. The Rev. Brooks Elliott, of Dickinson, officiated. Burial was in Mount Zion Cemetery under the direction of Edwards Funeral Home of Woodville.

Palbearers were Jerry Sheffield, B.S. Lee, Aubrey Lee, Carlton Riley, Joe F. White and Vernon Lee.

Mr. Sheffield died Thursday at the home of his son, J. Sheffield, in Houston after an illness of three years. He was a Baptist.

Surviving are his wife, Mrs. Ann Sheffield of Houston; two daughters, Mrs. Howard Hight of Pasadena, Tex., and Mrs. A.L. Hensarling of Groveside; one brother, W.B. Sheffield of Woodville; two sisters, Mrs. Leola Knight of Litchford, Mo., and Mrs. T. C. Smith of Silsbee, an only grandchild.

Mrs. J. C. Coward
Of Jasper Dies
Funeral services for Mrs. Sarah Coward, 88, were held at 2 p.m. Wednesday at the First Baptist Church in Jasper with the Rev. Andrew Alford officiating. Burial was in Memorial Park Cemetery in Jasper.

Mrs. Coward died at 3 a.m. Tuesday in Dickinson hospital. Palbearers were A.W. Dickerson, James Dickerson, Charles Wood, Joe Farrell Coward, George Coward, Forrest Scarborough and Clarence Coward.

Mrs. Coward was a member of the First Baptist Church in Jasper and a member of the Order of the Eastern Star, Snow River Lodge of Spurger.

Survivors include her husband, Joe C. Coward; five sons, Clarence and George Coward, both at Jasper, J.C. and Tom Coward, both in Evale; four daughters, Gladys Courten of Houston, M. Belle Dickerson of Jasper, Sara Wood of Bridge City and Juanita Lister of Cleveland, and one sister, Mary Cole of Houston.

THANKSGIVING

In the Tradition of the Holiday,
We Gratefully Take Account of
Our Bountiful Blessings . . .

Prayerful moments in the church
of our choice . . . happy moments with
family and friends . . . these
are the times when we most
appreciate all our daily
blessings. Today, we
join with you in giving
thanks . . . and extend
our best wishes for a
happy Thanksgiving.

CITIZENS STATE BANK
WOODVILLE, TEXAS

Hillister Notes
Mrs. and Mr. Benny Ray White and daughter of Dallas visited in the B. J. Smith home Wednesday.

Mrs. Earl Williams and Mrs. J.W. Foxworth were rooming visitors Tuesday.

Mrs. Jewel Woods of Widor was here Tuesday to see her mother, Mrs. J.M. Phillips. Friends of Mrs. P.C. Smart regret that she is ill and is in Tyler County Hospital.

Mrs. J.P. Tolar is in W. Histon, Florida for a visit with her brother, Frank Bullock and family.

Mrs. and Mr. F.J. Sasser of Fort Worth visited to see Jack Holt home Thursday and attended a meeting of the Municipal League at Community Inn in Woodville.

Paulette Smith of Jasper spent the weekend with Mr. Larry Dutton.

Mrs. W.G. Haynes, Mrs. Mary Sumral and Mrs. J.W. Duttons with Mrs. D.C. Satterfield of Center were in Warren Friday night to attend revival services at the Methodist church.

Mrs. and Mr. Clifton Collier and Martha enjoyed a visit in Jasper, Sunday.

Mr. and Mrs. L.M. Phillips of Popas Hill Community home in Houston Sunday to attend Billy Graham service.

Weekend visitors in the Hills were home were J.C. Ward and son Danny of Jacksonville, J.N. Fisher of Summerfield and Mr. and Mrs. Henry Braucher of Woodville.

Mrs. Ida Hayes of Woodville is here for a visit with her sister, Mrs. G.D. Currie.

Mr. and Mrs. J.L. Rubin and children's Nederland spent the weekend with her parents, Mr. and Mrs. B.E. Whitaker.

J.W. DeRamus was a visitor in P. Kibler, La. Saturday.

Douglas Goings is in St. Elizabeth Hospital in Beaumont in a serious condition as a result of stab wounds received Friday night.

Mrs. Geneva Francis was visited by his bedside early Saturday.

Early Bird League

McClure's Furniture could say homes for two weeks and still be in first place by one game, Ledy Robinson and Gloria Creech paced McClure's 4-0 victory over the Hi-Los' Ledy led the league with 472 series and Gloria with a 107 for high game.

Rachel Shrock led the Hi-Los' with a 440 followed by Gladys Johnson with a 406.

Hutto's Market won 4-0 over Globe-Mann Insurance, making Globe-Mann's second place debut an short one week stand. Hutto's Dorothy Jolley teamed with a 452, which was her second high series. Jean Willford followed with a 394.

Globe-Mann Insurance was led by Ruth Hinz 493 and Ruby Fitzgerald 342.

It was "A Bad Day at Black Rock" for the Leds' as they with the Coud-Ber's taking advantage of every mistake. Joyce Colbert led the 3-1 victors with a 395 followed by Jimmy Gosley 368.

Mary Chalm was high for the Leds-Ore's and team captain, Nell Sweet was second. Spills; Ledy Robinson 3-8-10; Gloria Creech 3-10 and 2-7; Dorothy Job 3-10 and 2-7; Margie Evans 3-7 and 2-7.

Hospital Notes

Tyler County Hospital
Week Ending November 16
Visiting Hours: 10:30 a.m. to 12 Noon; 2:30 p.m. to 9:00 p.m.

PATIENTS DISMISSED:
Bill Green
George M. Smith
Mrs. Sue McReynolds
Mrs. Patricia Lane
Mrs. Lois Wood
Mrs. Elvira Battise
Mrs. Lee V. Waller
William Moreland
Roger Mitchell
Mrs. Ada Holmes
Clarine Mays
Richard Armstrong
Mrs. Leba Hill
Jack Wood
Mellie King

Thomas' Nursery Notes
BY RUTH THOMAS

When anyone thinks of Tyler County the first thing they think of is the beautiful trees. There are still homesites in this country without a tree on it. So take consideration of the following fall into that category - Mimosa, Box Elder, Silver Maple, Catalpa Radbad, Arizona Ash, Locust and Prunus M. Liberty. The only disadvantage to some of the rapid growing trees is that they are brittle and break easily. The ideal thing to do is plant one tree to shade rapidly and plant an oak or some other slow growing tree and when it gets Max Shrock, Doyle D. Johnson, Shannon Wright, Mrs. Elizabeth Dean and Betty Boy Brown Lindsey, Mrs. Ruby Adams, Mirvle Sterling, Mrs. Essie Jordan, Mrs. B.K. Overstreet, Mrs. Maggie Reidner, Bradley Hendrix, Stephen Ray Hinz, Robert C. Scott, Mrs. Mildred Hanz, W. W. Mitchell, Mattie Mitchell, R. Z. Lazenby, James Davis, Jerry F. Jordan, Eddie Hatton.

PATIENTS ADMITTED:
Clyde E. Sheffield, Earl Howell, M. S. Betty Swearington, Mrs. Zora Hicks, Jess B. Biler, Mrs. L. L. Lonnie Foxworth, Mrs. Lawrence Battise, Jerry D. Battise, Mrs. Mattie Dean's, Mrs. Bartie Swearington, Mrs. Helen Davidson, Leonard Kiefer, Mrs. Lawrence Shepherd, Mrs. Helen Davidson, Mrs. Zona Davis, Mrs. Verna Smart.

PATIENTS PREVIOUSLY ADMITTED AND STILL HOSPITALIZED:
Ed Pessara, John F. Sanders, M. S. Betty Stanley, Richard Shuler, M. S. Vera Leonard, Mrs. Maggie Tucker, Roy Crosby.

The Other Twentieth Century Man

We Americans think of the 20th century man in terms of the comfortable and often affluent. He grows up in the large cities and in the suburbs. He is a word picture of that man form a churchman who spent many years in a study of the Bible. He is a man who has lived in a mud hut and a ploughs three acres of land with a crooked stick. Most of the time he is sick. His mind and body are heavy with fatigue. His spirit is heavy with discouragement.

"As he harvests his thin crop of millet with an ancient sickle, he moves so slowly that he must work 15 hours a day. There are years when the soil is too sick or weak to hold the sticks, so his harvest is less than 30 years ago. There are no schools, no teachers. When one of his children is dying, he watches helplessly. He has never learned to read or write his own name. He is ashamed of his ignorance and knows that many take advantage of him." The third landowner who takes two-thirds of the crop for rental of the land, the money lender who charges him heavy interest. He is always hopelessly in debt, and his yearly income is seldom more than \$250.

Each fall during the Thanksgiving season, the three U.S. major faiths unite in a Religious Outreach and Appeal to help the many kinds of "twentieth century man" in many parts of the world. He may be a Jewish refugee from Romania, a hungry African refugee, or an ill clad child in Latin America. Wherever the need.

ITEM: Before hanging up your monthly, always check the other openings at the neck and waist. This will help in retaining shape and cut down necessary pressing.

C'mon, baby, let's do the Tic-Toc.



Ya don't know how? Then follow me to Best Drug Store. All the cats are there. Singing and humming; pecking and dipping, hopping and bobbing. They're having a blast.

Don't you know anything? They're giving away free dance sheets for the Tic-Toc. Instructions, drawings of each step, everything you need is on these sheets. And, man, that's not all.

There's a wild new record they're handing out free. Absolutely free. It's sung by the Carvelles. That's how come they're doing this.

Don't you get it? The Carvelles? Garavelle? watches? They have a whole slew of them and they want all our cats to know it. Now you know. Let's make tracks.

BEST PHARMACY
BU 3-2163 WOODVILLE

THE TYLER COUNTY HOSPITAL
Week Ending November 16
Visiting Hours: 10:30 a.m. to 12 Noon; 2:30 p.m. to 9:00 p.m.

PATIENTS DISMISSED:
Bill Green
George M. Smith
Mrs. Sue McReynolds
Mrs. Patricia Lane
Mrs. Lois Wood
Mrs. Elvira Battise
Mrs. Lee V. Waller
William Moreland
Roger Mitchell
Mrs. Ada Holmes
Clarine Mays
Richard Armstrong
Mrs. Leba Hill
Jack Wood
Mellie King

KIRBY MENU

Week of November 29 - December 5, 1965

MONDAY:
Spanish Rice with Ground Meat
Green Beans
Beef Pickles
Applesauce
Hot Rolls
Butter, Milk

TUESDAY:
Hot Dogs with Chili Sauce
Navy Beans
Green Salad
Mustard or Salad Dressing
Banana Pudding
Bread, Butter, Milk

WEDNESDAY:
Fried Chicken
Rice and Gravy
Green Lima Beans
Hot Rolls with Fruit
Bread, Butter, Milk

THURSDAY:
Turkey & Noodles
Blackeye Peas & Ham
Spiced Strips
Cornbread
Spice Cake
Butter, Milk

FRIDAY:
Fish Squares
Buttered Potatoes
Biscuits
Peach Cobbler
Butter, Milk, Bread

REMEMBER BY THE OLD TIMER

From Mrs. Mike Wickham, San Carlos, Arizona: "I enjoy very much your column 'I Remember' and I have a real old time while reading it today - simple steps on how to wash clothes - title is 'Count Your Blessings'."

"Bill is in the yard to beat his old time while reading it today - simple steps on how to wash clothes - title is 'Count Your Blessings'."

"Bill is in the yard to beat his old time while reading it today - simple steps on how to wash clothes - title is 'Count Your Blessings'."

"Bill is in the yard to beat his old time while reading it today - simple steps on how to wash clothes - title is 'Count Your Blessings'."

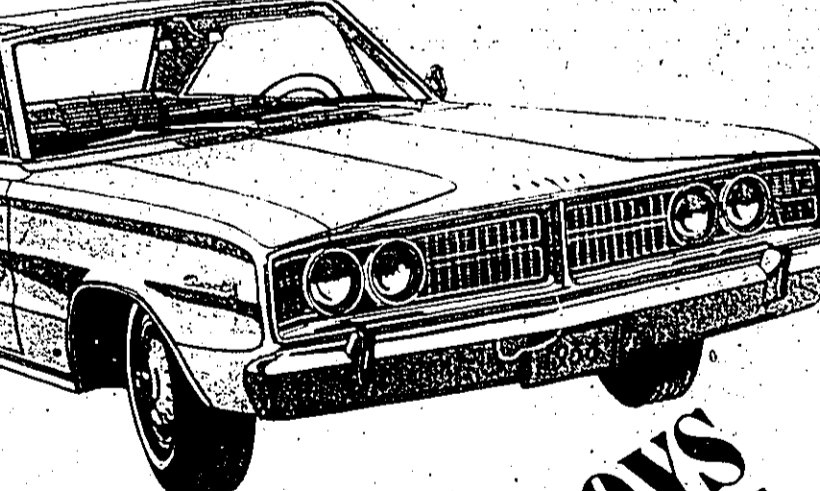
"Bill is in the yard to beat his old time while reading it today - simple steps on how to wash clothes - title is 'Count Your Blessings'."

VISIT JACK LANE FORD, INC.
When You Want **TOTAL PERFORMANCE** in **New Ford Cars** **New Ford Trucks** **Repair Work** **Body Repairs** **Automotive Parts** **Wrecker Service**

ANYONE PURCHASING A NEW CAR DURING THE MONTHS OF NOVEMBER AND DECEMBER WILL RECEIVE A TOY MONSTER. IT RUNS, RALLIES, HOOPS AND THINK LIKE A MAN. CHRISTMAS GET YOUR CHILDREN.

JACK LANE FORD, INC.
104 PINE STREET BU 3-2526 WOODVILLE, TEXAS

Here's a car that fills the bill for rebels who want a brand new thrill



JOIN THE DODGE BOYS REBELLION

Coronet

Run your eyes over this big car. Beautiful. Rich. Lavish. Inside and out. Blazing with power, push and pizzaz. Guaranteed to spool you for other cars. Big in every way, but not in price. Handles and goes like no other car in its class. And it gives you exactly the kind of horsepower you want. There's a spunky 316 that goes and goes and goes on a tankful of gas. There's a fistful of branny V8's that include some of the hottest production engines ever built in America. Dodge Torqueflite automatic transmission has been acclaimed the smoothest on the market.

You know they're good guys - they wear white hats

Joe Daniel Motor Co.

THE DODGE BOYS

Homemaking News & Views

MRS. MAURINE J. MOONEY, TYLER COUNTY HDA

TRADITIONAL THANKSGIVING DINNER

Dinner is the high point of any Thanksgiving. And Thanksgiving dinner this year should be no exception. For tonight, the U.S. Department of Agriculture's plentiful foods list for November is the absolute necessity for any Thanksgiving dinner—turkey.

To make your meal all the merrier, you'll be able to include tasty additions of rice, split peas, potatoes, sweet potatoes, onions, cabbage, apples, prunes, and frozen concentrate, orange juice—all from the plentiful foods list of USDA's Consumer and Marketing Service.

Thanksgiving is a good time to splurge, without regard to budgets—just buy what you find the best. What less when you use the "plentiful."

Give your turkey special flare by brushing the head of the bird with reconstituted frozen concentrated orange juice just before plating in the stuffing.

Orange and cranberry can give you a good start on camping and outdoor.

What Thanksgiving dinner would be complete without cranberry sauce? Or you may want to try deep-fat fried turkey with a "surprise" marshmallow filling.

Apples, a tart, are to your turkey and other main courses.

Remember, remember prunes in your taking. Also include cranberry, apple pie. And don't overlook pumpkins and pumpkin seeds. They're traditional holiday favorites. The south and north in good supply this month.

Make this Thanksgiving one of the best—with an extra helping of turkey, dinner, based on the comments of America's chefs.

THE IDEAL TURKEY PREPARATION

Beats and nutrition specialists for the Texas A&M Extension Service have several tips on how to safely prepare a turkey.

Be particularly careful in your preparation of your turkey. This holiday treat should contain bread crumbs, seasonings, cranberry, fat, perhaps an egg or two, and some fruit, because the small pieces of food are handled often during the cooking.

Stuff the turkey just before roasting it and contain the stuffing in a pre-boiled casing. If pork is used add to the stuffing, such as sausage, be sure it is thoroughly cooked.

Stuff will never partially cook a bird ahead of time. If the stuffing will only be warm by the time the bird is done, the stuffing is not thoroughly cooked.

Be careful to be careful to thoroughly cook all turkey food. In five hours, there is not enough time to cook a turkey. In five hours, there is not enough time to cook a turkey. In five hours, there is not enough time to cook a turkey.

Be sure to be careful to thoroughly cook all turkey food. In five hours, there is not enough time to cook a turkey. In five hours, there is not enough time to cook a turkey.

Be sure to be careful to thoroughly cook all turkey food. In five hours, there is not enough time to cook a turkey. In five hours, there is not enough time to cook a turkey.

Pare, core and slice the apples, placing apple wedges on dough in overlapping rows. Mix remaining sugar, cinnamon and sprinkle over apples. Dot with butter or margarine. Bake in 375 degree F. oven for 40 to 45 minutes. Remove from oven and drizzle the 2 tablespoons syrup over the apples.

LIBRARY NOTES CURRIE'S AG NOTES

New books on the shelf are: "Those Who Love" by Irving Stone, a historical novel about John and Abigail Adams, given by Doris and Elizabeth Anderson in memory of an aunt, Mrs. Bessie Gilpin. The library was given Mrs. Gilpin's collection of books. Lee Feagin gave "Floral Art for America" by Martha Lowry. There is also a new book "Texas in the War 1861-1865" by Wright, for the reference section of our Texas collection, which will be a valuable help for those interested in genealogy. If you think some of the boys look like hairy beanstalks today, you ought to look at the pictures in this book.

Mrs. Eshel Hill gave us some of her newspaper writings of life during the Civil War days. These will be placed in folders and also put in the reference section of our Texas collection.

All the adult fiction and non-fiction have been catalogued now for easy finding of any book we have, according to author, title or subject.

What does most people's leisure yield? Spend 20 minutes each day reading something constructive—you will feel better physically and mentally—for a dull, bored mind makes one a dull, boring person. Know what you are talking about—READ.

Bethany News

Harold Sturrock, son of Mr. and Mrs. Jim Sturrock and Miss Carolyn Martin, daughter of Mr. Edd Martin of Lufkin was united in marriage Tuesday night November 16 at Herfy Baptist Church in Lufkin. Bro. D. N. Davis officiated the wedding.

Mr. and Mrs. Gerald Sturrock of Siblee and Miss Barbara Sturrock of Beaumont attended the wedding of their brother with their parents. The bride and groom will make their home in Colmesneil where he is employed by Clyde Freeman's Tile and Concrete plant.

Joe Goode of Beaumont spent several days with his sister and brother-in-law, Mr. and Mrs. Craig Marshall. Visitors in the home of Mr. and Mrs. B.W. Creech Saturday were Mrs. Gus Holloman and son, Ronald, W.J. LaRocca and son, Charles, Alys, Miss Dena Shelton and their little brother, Stanley all of Beaumont.

Henry Kube of Port Arthur spent a few days last week with his grandparents, Mr. and Mrs. Frank Moryman.

Visitors in the home of Mr. and Mrs. Jim Sturrock over the weekend were Mr. and Mrs. Gerald Sturrock of Siblee and Mr. and Mrs. Harold Sturrock.

We are glad to know Mrs. Luvena Edge is doing fine after undergoing major surgery in a Greenvale hospital. She took ill suddenly while visiting there with her daughter Mrs. Affie Finkly and

It is desirable to prune back the top growth to compensate for the roots lost in digging and transplanting. Do this by removing about 1/2 of each branch, making the cut on an outside bud. It may be necessary to thin out some of the lateral branches to develop good scaffold branches. By no means should all lower limbs be removed reducing the main stem to a snip. If a high limbed tree is desired, low limbs can be removed later after the plant is well established. Do not remove more than two lower limbs per year.

Place a mound of the enriched top soil in the bottom of the hole to support the roots of the plant so that when placed at the same level with the soil surface as it was in the nursery. As you fill the hole, work the soil in around the roots so that there are no air pockets. After hole is 2/3 full, fill with water and allow it to drain away. Then fill the hole with the enriched soil, until level with surrounding soil. Using additional soil, build a berm or dam around the outer edge of the hole to aid in watering the first season. This should be removed or spread out after the plant is well established.

Trees over four feet high should be staked the first year to keep them straight. This can be done by driving a wooden stake or iron pipe into the ground about 6 to 8 inches from the trunk in the direction of the prevailing wind. The tree can be tied to the stake with a soft rope or a wire which has been run through an old pipe of hose to protect the bark.

Never mix fertilizer with the soil used in the backfill. Wait until the plant is well fertilized.

Federal Housing Administration

The role of the wife's income in helping to meet the monthly mortgage payment will receive greater consideration under a policy outlined today by Neal Pickett, Director of the Houston FHA Office.

The new policy recognizes that the trend in recent years has been for working wives to resume employment after the birth of a child and the period of interrupted income is typically short. Many employers offer maternity leave and guaranteed re-employment rights. The financial impact on the family frequently is lessened by insurance or hospitalization plans.

These considerations make it possible for FHA to give more weight to the wife's income in measuring the family's effective income for repayment of the mortgage debt. In a letter to Mr. Pickett, FHA Commissioner P.N. Brownstein said, "We recognize the desire on the part of young couples in the early portion of the marriage to jointly work for a better standard of living."

FHA has always provided that under some circumstances the wife's income could be accepted as effective income for mortgage credit purposes. Usually, however, approval was limited to cases where interruption of the wife's income, due to the birth of a child, seemed unlikely.

Mr. Pickett pointed out that the new policy recognized the acceptance of working wives as a social change and by qualifying the joint income of young married couples FHA would assist them to achieve their goal of home ownership.

Mr. Pickett pointed out that the new policy recognized the acceptance of working wives as a social change and by qualifying the joint income of young married couples FHA would assist them to achieve their goal of home ownership.

Texas Auto

Thefts Down STILL EXCEEDED \$8 MILLION Automobile thefts nationally were up four per cent while Texas car thefts dropped 2.3 per cent during the first six months of this year, executive committee members of the National Automobile Theft Bureau were told this week.

C.C. Benson, manager of NATB's Texas Division, stated at the annual meeting in Dallas that such a reduction is encouraging but that the 1965 statewide economic loss from car theft will still be a staggering \$8.5 million.

Mr. Benson pointed out that for the twelve months ending with August, stolen car recoveries were down three per cent. "This is indicative," he said, "of the continued increase in activity of professional, commercial thieves."

Organized rings have moved many stolen cars into other states for sale while a substantial number have been transported to Mexico. Mr. Benson noted that professional car thieves have continued to use stolen or counterfeit titles, or titles and serial plates from wrecked cars in their efforts to dispose of stolen autos.

Other facts in the total Texas auto theft picture reported in the NATB statistical survey are that...Chevrolets continue to be the most popular target of car thieves and half of those remaining unrecovered are of that make. Fords make up 17

District Agent For Extension Service Moved

R.J. Hodges, who has served since 1961 as district agent of the Texas Agricultural Extension Service with headquarters in Nacogdoches, has been transferred to District II with headquarters in Richmond, it was announced last week.

Mr. Hodges is well known in Tyler County for his work with 4-H club groups and extension service personnel.

Mr. Hodges reported to his new post November 11.

Social Security Q's & A's

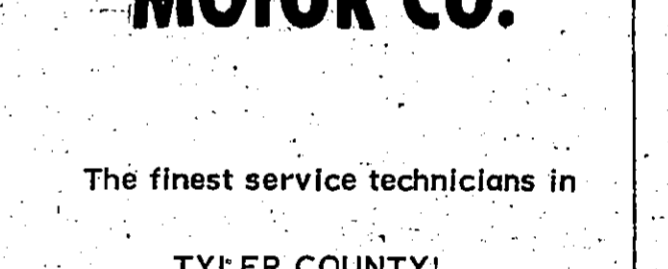
Q. Has a law been passed that would let a woman get social security at 60?

A. A woman can qualify for a reduced widow's benefit at 60. However, she would have to be 62 to qualify on her own work record or as a wife who has no children under age 18 in her care.

Q. I am a 56-year-old widow, under a doctor's care, and unable to work. I did not work under social security long enough to qualify for disability benefits. Can I receive my widow's benefit now?

A. No. You do not have children under age 18 in your care who are eligible for benefits. Therefore, you must wait until

FOR PROMPT, DEPENDABLE SERVICE, JUST CALL US...



The finest service technicians in TYLER COUNTY!

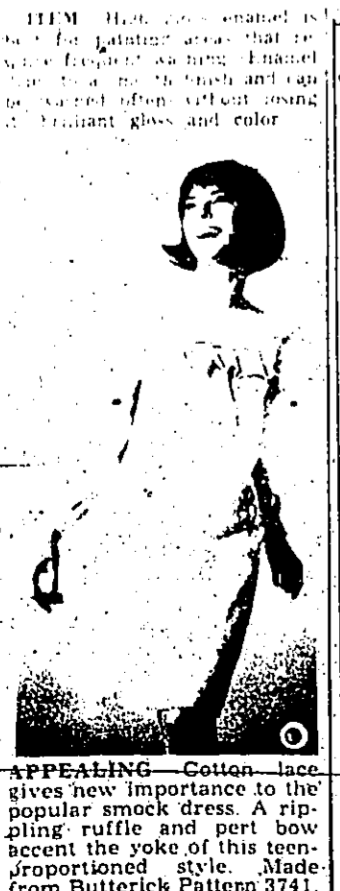
IGNITION EXPERTS
GUARANTEED BRAKE REPAIRS

Authorized Chevrolet-Olds Dealer

HOWARD MOTOR CO., Inc.

302 N. Magnolia BU 3-2557

"Service with a smile"



CLOSE OUT

ON 1965 JOHNSON MOTORS AND MONARK BOATS
COMPLETE LINE OF HUNTING & FISHING SUPPLIES

SPECIAL ITEMS
Pick up Gun Racks Reg. \$3.95 NOW \$2.95
Insulated Rubber Boots \$4.99
5 Cell Flashlight Batteries \$1.59

IRVIN'S SPORT SHOP
Woodville BU3-3811 ALL THE LIVE BAITS

Christmas Gifts

Complete line for Every member of the family

Get your Christmas Catalogue NOW

LAY-AWAY YOURS NOW AT
WESTERN AUTO ASSOCIATE STORE
Leroy Davis - Jim Ganey

APPEALING—Cotton-lace gives new importance to the popular smock dress. A rippling ruffle and pert bow accent the yoke of this contemporary style. Made from Butterick Pattern 3741.