

The Tyler County Booster

Volume 38-Number 22

Woodville, Texas 75979, Thursday, February 23, 1967

Price 10¢

TOP OF THE MORNING

By CHUCK STAMPS

The Lions and Rotarians played their annual basketball game in the Kirby High School gym Friday night, and following Monday morning's tornado some was pointed to the damaged structure and tilted darkly that the game must have been pretty rough. All that aside, the Lions managed to score three field goals in the three-minute overtime to win by four points. It was a real good game, but most important is the fact that a large crowd was present to benefit the Boy Scout Fund.

The Woodville schools face a critical problem following the damage to nearly all the buildings on the campus by the twister Monday morning.

The school had just suffered a disastrous fire which destroyed one of the elementary buildings. The insurance adjustment had not been made on it when along came the tornado.

As we understand it, all the buildings were damaged to some extent and of course two or three suffered extensive damage. The gymnasium is, for all practical purposes, ruined. The band hall and Wheat Junior High buildings had roof damage as well as broken windows. The old elementary building was damaged to some extent, and it may be worse than first thought because of its age and condition.

The Girl at the Drug Store says that catching a husband is something like fishing; sometimes it helps to wiggle the bait a little.

The Woodville Lions Club is grateful to the Warren School for the use of the gym there for the independent basketball tournament which began Tuesday night and will continue through Saturday night. Since the tornado ruined the Woodville gym, another place had to be found in a hurry or cancel the tournament.

We suggest that if you want to see some good basketball players in action that you drive down to Warren tonight, Friday night, or any time Saturday beginning at 9 o'clock in the morning.

JOYCE KILMER LIES A-MOLD'ERING...

We hope that Allison Sanders doesn't mind us stealing the following gem from his column in the Houston Chronicle. Entitled "Knees", it is a timely parody of Joyce Kilmer's "Trees", and was sent in by one of Mr. Allison's readers:

I think that I shall never see
A thing as ugly as a knee
Above whose gnarled and knotted crest
The mini-hemline comes to rest;
Or one that's even worse that that
When padded with repulsive fat.
A knee that may in summer wear
Nothing at all, but be quite bare,
Behind whose flex there oft remains
A network of blue, broken veins.
Some knees continue to perplex
How they can form the letter X,
While in another set one sees
A pair of true parentheses.
Small nuts write verses such as these,
But greater nuts display their knees.
P.S.: You guessed it, but excuse me, please.
I'm just a fat to show my knees.



Stark reminder of the force of the tornado is seen in the trunk of a tree twisted off in the J. Wood Fain yard.

Judging Begins Tuesday For Dogwood Queen

Preliminary judging for the 1967 Tyler County Dogwood Festival will be held Tuesday night at Dogwood Motor Hotel, according to Hugh Howard, chairman of the Kings Men.

Senior girls from Tyler County high schools are eligible to compete, and several from each school will compete, Mr. Howard said.

All the judging Tuesday night, the girls from each school will be chosen to represent the school in the semi-final judging on March 6. The queen will be chosen from the finalists from each school on March 23, but her identity will be kept secret, as usual, until the night of the festival.

Girls selected for the judging March 28 and March 6 will participate in the festival coronation ceremonies with those selected on the latter date being the princesses from whom the queen will be named.

Fain Theater Remodeling

The Fain Theater in Woodville, which has been closed for extensive remodeling and repairs, opened Wednesday with a full schedule of shows set for showing each week.

The movie selected by J. Wood Fain, owner, for the grand reopening is "Texas Across the River" starring Dear Martin and Joey Bishop. It will be shown tonight and Friday. Saturday's show is "Billie" with Patty Duke. Sunday, Monday and Tuesday's film is "The Russians Are Coming."

A schedule of shows for the following week are carried in an ad on the inside pages.

County Teachers Meet At Chester School Tonight

The Tyler County Teachers Association will meet in the Chester School tonight (Thursday) at 7:30 p.m.

State Representative J. E. McLe, Jr. will be the speaker. Mrs. Edith Findley is program chairman.

W. W. Malkey, president of the group, will preside.

Tornado Damage May Go As High As \$500,000

A tornado roared through Woodville early Monday morning while residents slept causing damages estimated up to half a million dollars.

The twister dipped out at a line of thunder showers touched off by a cold front sweeping into the area which had experienced unseasonably high temperatures for the preceding few days.

There were no reported injuries since the storm struck about 3:20 Monday morning while most townfolk were asleep, although the accompanying thunder, lightning and winds awoke many, especially those in the path of the

Cage Tournament Moved To Warren

The Woodville Lions Club Independent Basketball Tournament started Tuesday night in the Warren High School gym with Gulf Lumber and Supply and the Spurger Aces meeting in the first contest.

The tournament had been scheduled to be played in the Kirby High School gym but the tornado early Monday severely damaged the local gym and it was necessary to find another place for the tournament.

Since Wednesday was a holiday, no games were played. The tournament will be resumed tonight (Thursday) with games beginning at 6 p.m. and will continue through Saturday night. Prize games will be played beginning at 6 p.m., but on Saturday a full schedule of games will begin at 9 a.m. and continue throughout the day with the finals being played Saturday night.

Teams entered include McClure Furniture, Woodville; Woodville Lions Club; Lowery Brothers, Huntington; Spurger Aces; Gulf Lumber and Manufacturing, Beaumont; Kountze Cleaners; Baker's Buna Independents; Big Sandy Indians, and First Baptist Church in Beaumont. Three other teams will also participate, and they will be named next week.

Trophies will be awarded for first, second, third and fourth places, plus individual trophies for outstanding player, etc.

Trophies are being furnished by Woodville firms. They include Citizens State Bank, first place trophy; Jarrold's Pharmacy, second place; Sullivan's Hardware, third place; and Feagin Insurance Agency, fourth place trophy. Trophies are on display at the bank.

Chester Sets School Trustee Election April 1

The Chester School Board, at its last regular meeting, ordered an election to be held April 1, 1967 for the purpose of electing two trustees for the Chester Independent School District. Board members whose terms expire are G. C. Enloe, president of the board, and Ray Barnes, a member of the board. They have filed for re-election.

Harold Lewis was appointed to hold the election and serve as judge.

The required forms for filing may be obtained from the office of Aubrey Bradley, superintendent. The form should be completed and filed with the county judge before 5 p.m. March 1, 1967.

Trustee Election Slated At Warren

An election to choose two trustees for the Warren Independent School District has been set for April 1, 1967.

All requests by candidates to have their names placed upon the ballot shall be filed with the secretary of the Board of Trustees, at the school secretary's office not later than March 1, 1967 at 4:00 p.m.

Licence Plates From Way Back

Bubba Voss of Orange has loaned Heritage Garden his collection of Texas auto license plates for display at the museum. Most of them are from his own cars during the past several years, although the small plates in the square in the center were given to him by a cousin, and are some of the first plates issued in Texas. The collection consists of 45 plates, with Mr. Voss, at left, shown giving Clyde Gray his 1966 plate. The plates run consecutively through the years with the exception of the 1923 plate, which Mr. Voss did not have and has been unable to locate one to complete the collection. Mr. Voss is a musician in Clyde Beatty-Cole Brother's Circus, and travels from April to November with the circus. He also has a collection of circus posters dating back to 1905. He also has taken pictures of 42 state capitol buildings and hopes to be able to photograph the other eight to complete this collection.



The twister evidently traveled at tree-top height through most of its path through Woodville, tipping down close to the ground at the Fain's, the school and Woodville Lumber Company's main office after crossing Highway 190 in the east part of Woodville. A jeep parked in a small storage shed was left standing while the storm carried the shed away. A large, tall lumber storage shed withstood the tornado's assault, although debris battered its west side and two steel beams and a piece of concrete weighing 200 to 300

Most badly damaged were the Woodville school buildings and lumber sheds at Woodville Lumber Company, indicating that the twister traveled almost due east.

The Woodville schools, most severely damaged building was the gymnasium where a section of the roof was ripped off and the floor damaged by the rain which poured in the gaping hole at the west end of the building.

The debris from the roof was slammed into the side of the old elementary school building, breaking windows and hurling a brick into the principal's office where it hit and damaged a duplicating machine.

The roof on the Wheat Junior High School building and the band hall was also damaged in the storm. The tall building in the Dogwood Amphitheatre nearby which housed expensive lighting fixtures for the annual dogwood festival was toppled over. Windows throughout the campus were broken.

At the Woodville Lumber Company, the tornado carried away two small sheds, blew down the smokestack, caused another lumber shed to collapse, tossed logs onto a truck, wrecking it, and ruined considerably dry lumber near the planer mill. Damage was suffered by other buildings including the sales office located on the mill's lumber yards.

The mill was shut down and the crews began the task of cleaning and repairing the damage. It will take about 10 days to get it back in operation, the owners indicated.

The Woodville schools were closed at least for the rest of the week and it is doubtful that all repairs can be made in that time to the buildings. Practically all buildings on the school campus had damages to windows, several will need new roofs, and walls in some were damaged. A complete assessment of the full damages was not complete as the Booster went to press Tuesday.

Several homes were damaged. Possibly the heaviest loss was at the J. Wood Fain home just west of the school where several large trees were twisted off and uprooted, the roof ruined, and the entire house twisted out of alignment.

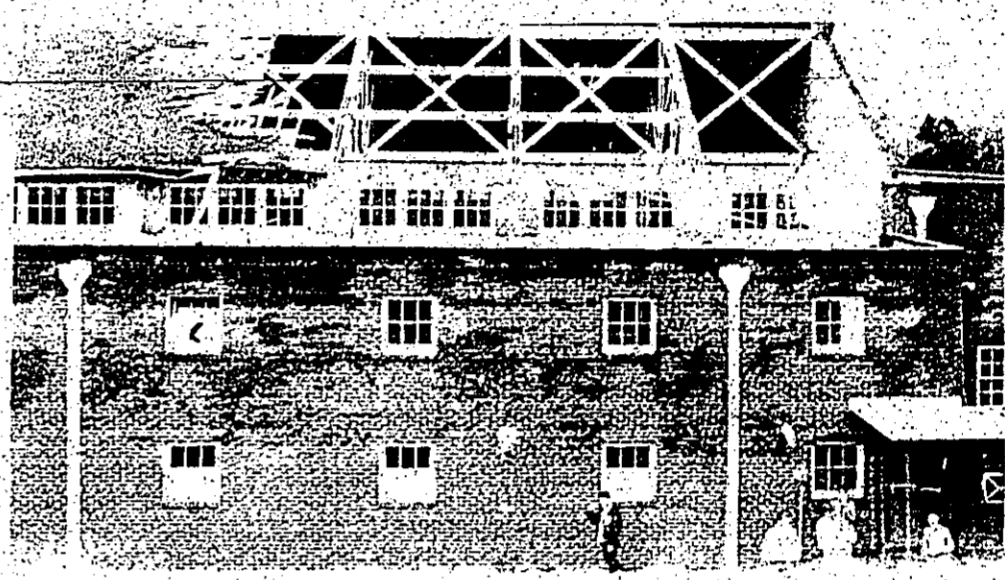
The twister evidently traveled at tree-top height through most of its path through Woodville, tipping down close to the ground at the Fain's, the school and Woodville Lumber Company's main office after crossing Highway 190 in the east part of Woodville. A jeep parked in a small storage shed was left standing while the storm carried the shed away. A large, tall lumber storage shed withstood the tornado's assault, although debris battered its west side and two steel beams and a piece of concrete weighing 200 to 300

The twister passed over the Minimax store, causing some roof damage, and came down again behind the Woodville Lumber Company's main office after crossing Highway 190 in the east part of Woodville. A jeep parked in a small storage shed was left standing while the storm carried the shed away. A large, tall lumber storage shed withstood the tornado's assault, although debris battered its west side and two steel beams and a piece of concrete weighing 200 to 300

The twister passed over the Minimax store, causing some roof damage, and came down again behind the Woodville Lumber Company's main office after crossing Highway 190 in the east part of Woodville. A jeep parked in a small storage shed was left standing while the storm carried the shed away. A large, tall lumber storage shed withstood the tornado's assault, although debris battered its west side and two steel beams and a piece of concrete weighing 200 to 300

The twister passed over the Minimax store, causing some roof damage, and came down again behind the Woodville Lumber Company's main office after crossing Highway 190 in the east part of Woodville. A jeep parked in a small storage shed was left standing while the storm carried the shed away. A large, tall lumber storage shed withstood the tornado's assault, although debris battered its west side and two steel beams and a piece of concrete weighing 200 to 300

The twister passed over the Minimax store, causing some roof damage, and came down again behind the Woodville Lumber Company's main office after crossing Highway 190 in the east part of Woodville. A jeep parked in a small storage shed was left standing while the storm carried the shed away. A large, tall lumber storage shed withstood the tornado's assault, although debris battered its west side and two steel beams and a piece of concrete weighing 200 to 300



Tornado rips section off gym roof.



Plants debris from gym against elementary building.



The yard at J. Wood Fain residence following storm.



One of three trees blown down at home of Mrs. Tom Cole lands on house.

One of three trees blown down at home of Mrs. Tom Cole lands on house.

A piece of sheet iron was found, wrapped around a tree about a mile east of the mill. Lumber and other debris was blown into fields and yards adjacent to the mill on the east side.

Total damage to the school buildings, homes, and the mill was estimated to be from \$400,000 to \$500,000, although it is difficult to assess the damages at this time.

TYLER COUNTY BOOSTER

R. E. JACKSON, PUBLISHER
 CHUCK STAMPS, MANAGING EDITOR

Published every Thursday by the Tyler County Publishing Company, P.O. Box 246, Woodville, Texas 75797. Telephone: 451-2424.

Entered as second-class matter, at the post office at Woodville, Texas, on February 15, 1966, under Post Office No. 451-2424. Acceptance for mailing at special rate of postage provided for in Section 1103, Act of October 3, 1917, authorized on February 15, 1966. Postage paid at Woodville, Texas.

Member 1967 TEXAS PRESS ASSOCIATION

THE LONGEST DAY

The night with the longest period of darkness in the world is not in the Arctic or Antarctic, but in the life of a man who has spent his life in the service of his country.

WANT ADS MAKE MONEY FOR YOU

TELEVISION SETS, STEREO EQUIPMENT, RECORDS, BOOKS, TOYS, CLOTHING, FURNITURE, APPLIANCES, ETC.

Call for more information: 451-2424



It's the Law in Texas

WHICH HOUSE IS YOUR CASTLE?

Three centuries ago, an English judge proclaimed that a man's house is his castle, almost two centuries ago, the framers of the Constitution declared that a man's house is his castle, and today, the safety of a man's house from governmental intrusion still ranks as one of the most distinctive hallmarks of a free land.

But which house is the law talking about? The house that you occupy as a tenant? The house that you own? The house that you own and occupy? All these things are important, but the house that the law is talking about is the house that you own and occupy as a tenant.

District Manager Urges Review Of Medicare Claims

If you are about to send in your first Medicare claim for doctor bills you have paid, a visit to the social security office may help to prevent a delay in payment, according to J. R. James, district manager in Lufkin.

Mr. James says that in the past some Medicare payments for doctor bills have been delayed because some simpler, important bits of information did not go to the Medicare carrier with the request for payment.

To make sure payment will not be delayed while the carrier writes back for missing information, James said, "we invite beneficiaries to bring their first claim to the social security office before they send it to the carrier. People outside Lufkin may have their claims forms reviewed by making an appointment to meet a representative on one of his scheduled visits."

James stressed that the Lufkin office will be glad to answer questions about any claim, but that the first claim is an individual beneficiary makes to the one on which he likely to need some help.

There are two methods of claiming payments for doctor bills under Medicare. Under one, the doctor bills the patient for whatever part of the \$50 deductible has not been paid, plus 20 per cent of the rest of the bill. He then claims the remaining 80 per cent from the Medicare carrier - generally Blue Cross in Texas. This method can be used only if the doctor agrees to it and also agrees that his total charge will be no more than the reasonable charge determined by the Medicare carrier.

Under the second method, the patient pays the doctor first and then requests repayment from the Medicare carrier. To show the carrier that the bill has been paid, the beneficiary either includes an itemized "household" benefit of \$35 monthly. Upon discharge from the hospital, the full benefit will be restored.

Of the total \$2 1/2 million tons of paper used in the U. S. last year, 47 million tons were produced in this country, reports the American Paper Institute, Washington, D. C. Imported 7.5 million tons, of which the largest share was newsprint from Canada.

BECOMES A DOCTOR OF CHARACTER
 6 Years College Required
 Write
 Texas Chiropractic College
 Local Address: P. O. Box 1870
 Fort Worth

VA QUESTIONS AND ANSWERS

(Editor's Note: Veterans and their families are asking thousands of questions concerning the benefits their government provides for them through the Veterans Administration. Below are some representative queries. Additional information may be obtained at any VA office.)

Q—My husband receives a disability check for wounds received in wartime. We have had several children since he was disabled, yet our compensation does not increase. Should it?

A—Only if your husband is more than 50 per cent disabled and submitted proof of additional children to the VA.

Q—I am receiving pension under the national law with the additional benefit for aid and attendance. My wife takes care of me while I am at home. Next week I am scheduled to enter the Veterans Administration Hospital for extensive surgery. Will my pension benefit be suspended after one full calendar month that portion of my pension benefit (\$100) paid because of a wife's aid and attendance will be replaced by the national chairman of the 1967 Freedom Roll-Call, said that has led to a resurgence of interest in the principles of American freedom.

Admiral Arleigh A. Burke, U.S.N. (Ret.), former Chief of U. S. Naval Operations, national chairman of the 1967 Freedom Roll-Call, said that has led to a resurgence of interest in the principles of American freedom.

It's up to you with passbook savings

WITH A HANDY passbook savings account, you save as much as you can, when you can. Withdrawals as needed. Your full balance goes right on earning our liberal savings rate—compounded to give you even more profits. It's the best-for-you way to save. Start savings growing now—with passbook convenience.

5% Current Dividend Rate
 Compounded Semi-Annually

Jasper Federal SAVINGS & LOAN ASSOCIATION

JASPER, TEXAS

INSURED S & L—\$150 Million Strong

Admiral Burke Hails Patriotic Resurgence

The increasing United States commitment to Vietnam has led to a resurgence of interest in the principles of American freedom.

Admiral Arleigh A. Burke, U.S.N. (Ret.), former Chief of U. S. Naval Operations, national chairman of the 1967 Freedom Roll-Call, said that has led to a resurgence of interest in the principles of American freedom.

Would you like to pay the same electric bill each month?

Now you can with our new EQUAL PAYMENT PLAN

If your present electric service bill averages \$20 a month or more, and you qualify otherwise, Gulf States' new residential Equal Payment Plan is available for you.

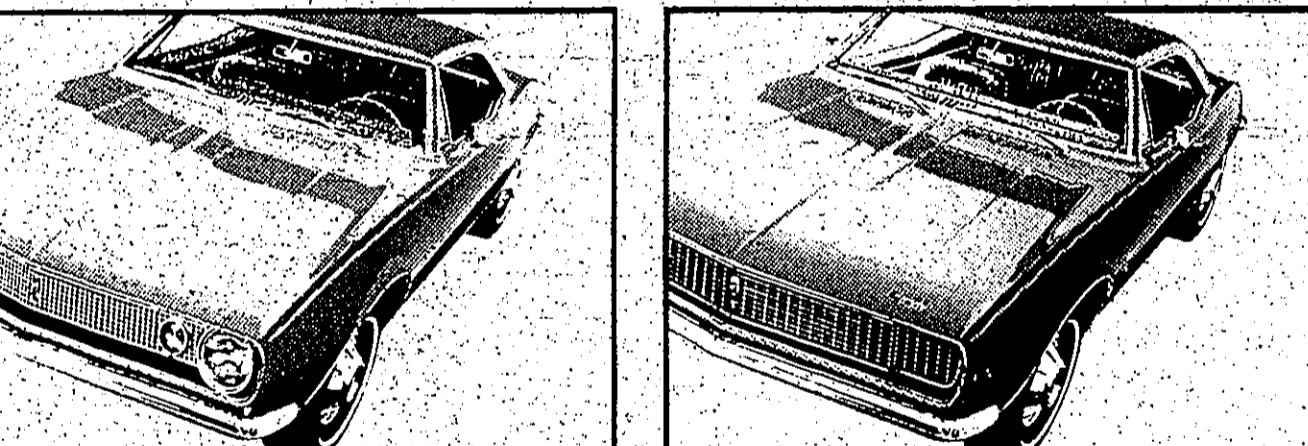
Here's how it works!

Based on your past 12 months billing, or estimated annual usage, if you haven't received a full year's service, our personnel will calculate your annual total electric usage and cost. This total will be divided by 12. Each month for the next 12 months you will be billed this same amount.

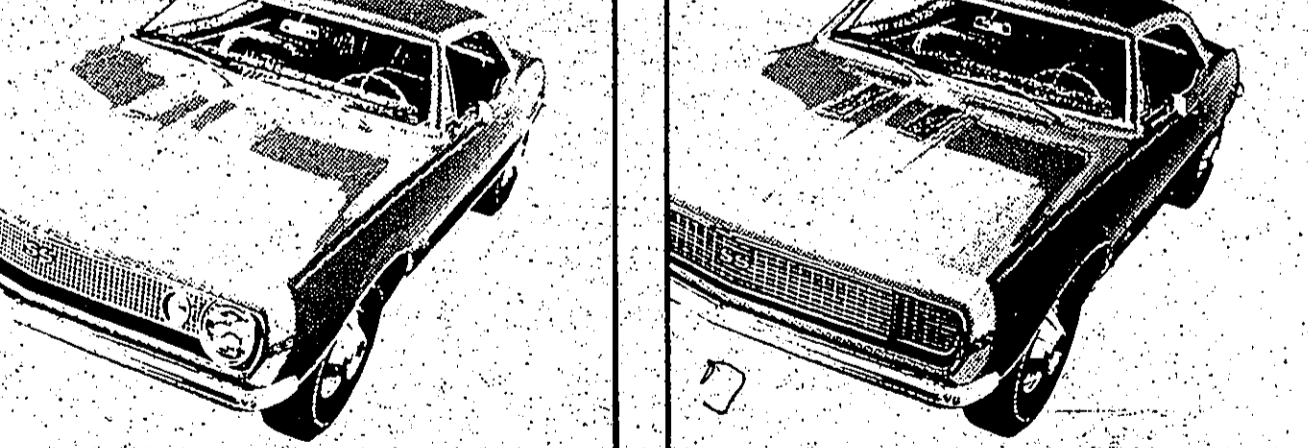
To keep your payments balanced, at the end of 12 months we will compare your Equal Payments with actual usage. Any difference will be spread over the following year with your bill adjusted accordingly.

The Equal-Payment Plan is an extra service designed for your convenience. For full details, contact your Gulf States office.

GULF STATES UTILITIES COMPANY



Take a Camaro, sport coupe or convertible. Make it a Rally Sport with hideaway headlights.



Make it an SS with Camaro's new 325-hp V8. Or both: SS with Rally Sport equipment.

Command Performance Camaro

Command drive Camaro at your Chevrolet dealer.

GM

HOWARD MOTOR CO., Inc.

203-N. MAGNOLIA WOODVILLE BU 3-2557

Admiral Burke Hails Patriotic Resurgence

The increasing United States commitment to Vietnam has led to a resurgence of interest in the principles of American freedom.

Admiral Arleigh A. Burke, U.S.N. (Ret.), former Chief of U. S. Naval Operations, national chairman of the 1967 Freedom Roll-Call, said that has led to a resurgence of interest in the principles of American freedom.

Have the heart-rending weekly reports of dead and wounded in Vietnam are reminding Americans that the price of freedom is high and that each citizen must do his part to preserve and perpetuate it. Admiral Burke also said that Vietnam has led Americans to a soul-searching restudy of the essential principles of the American Creed.

Freedom Roll-Call is a national educational campaign undertaken each year, February 15 to 28, to remind Americans of their responsibilities and duties.

Freedom Foundation, a nonprofit, nonpartisan and nonsectarian educational organization, was organized in 1949, was created to encourage understanding and support of American ideals. General of the Army Dwight D. Eisenhower is honorary chairman of Freedom Foundation; Howard H. Callaway is chairman; The Honorable James A. Farley is senior vice chairman, and Dr. Kenneth D. Wells is president.

The Foundation has established the American Freedom Center at Valley Forge with extensive library, graduate credit courses, lectures and seminars. The center is a 100-acre complex of colonial-style buildings, including the 50-acre Congressional Medal of Honor Grove honoring the nation's heroes who have received the Republic's highest award for valor.

More than 25,000 awards of cash, medals, citations and "pilgrimages" to historic Valley Forge have been made to individuals, teachers, companies, school systems and civic and patriotic organizations in the Freedom Foundation's annual National and School Awards Program.

Americans used over 100 billion pounds of paper in the U.S. in 1966—or about 530 pounds per person—reports the American Paper Institute. And, by 1970, per capita consumption of paper in the U. S. is expected to hit 680 pounds.

5% Current Dividend Rate
 Compounded Semi-Annually

Jasper Federal SAVINGS & LOAN ASSOCIATION

JASPER, TEXAS

INSURED S & L—\$150 Million Strong

Would you like to pay the same electric bill each month?

Now you can with our new EQUAL PAYMENT PLAN

If your present electric service bill averages \$20 a month or more, and you qualify otherwise, Gulf States' new residential Equal Payment Plan is available for you.

Here's how it works!

Based on your past 12 months billing, or estimated annual usage, if you haven't received a full year's service, our personnel will calculate your annual total electric usage and cost. This total will be divided by 12. Each month for the next 12 months you will be billed this same amount.

To keep your payments balanced, at the end of 12 months we will compare your Equal Payments with actual usage. Any difference will be spread over the following year with your bill adjusted accordingly.

The Equal-Payment Plan is an extra service designed for your convenience. For full details, contact your Gulf States office.

GULF STATES UTILITIES COMPANY

HOWARD MOTOR CO., Inc.

203-N. MAGNOLIA WOODVILLE BU 3-2557

MINIMAX BLEACH

U.S.D.A. CHOICE PERSONALLY SELECTED BEEF!

100 FREE S&H STAMPS
 With This Coupon, \$5.00 Purchase
 Good Until February 25, 1967
 HORTON-MCCOMBS MINIMAX
 Signed: _____

MINIMAX BLEACH 1/2 gal. 19¢

Beef Strips \$1.99
 Rib Eyes \$2.19
 Beef Tender \$1.99
 Stew Meat \$0.79
 Rolled Roast \$0.69
 Minute Steaks \$1.00
 Lunch Meat \$1.00
 Sausage \$0.69
 Turkey \$0.39
 Sausage \$1.37

Beef Roast
 BLADE CUT CHUCK 39¢
 CENTER CUT CHUCK 49¢

Ground Beef 49¢
 Chuck Steak 49¢
 Swiss Steak 59¢

Good Value BACON 59¢

SAVE ON THE BEST IN BEEF

Bread 4 1/2-Lb. Loaves 88¢
 Catsup 6 14-Oz. Btles 69¢
 Peaches No. 2 19¢

Avocados 5¢
 Lemons 5¢
 Cabbage 5¢

Carrots 10¢
 Lettuce 7¢
 Potatoes 69¢
 Rose Bushes \$1.29
 Plant-Ade Fertilizer \$1.99
 Plant-Ade Fertilizer \$1.29
 Pink Beauty PINK SALMON \$1.00
 Good Value Hamburger SLICED DILL 51.00
 Good Value DILL PICKLES 5.00

SMALL EGGS 3 doz. \$1.00

Coldwater All 79¢
 Dishwasher All 45¢
 Fluffy All 81¢
 Breeze 37¢
 Dove Liquid 37¢
 Final Touch 85¢
 Lifebuoy Soap 43¢
 Lifebuoy Soap 31¢
 Lux Soap 35¢

GRAPEFRUIT Texas Ruby Red 5¢

Tissue 2 Roll Pkg. 25¢
 Cake Mix 3 19-Oz. Pkgs. \$1.00
 Peas 6 303 Cans \$1.00
 Potted Meat 2 3 1/2-Oz. Cans. 25¢

Gala Towels 2-Roll Pkg. 39¢
 Juice 48-Oz. Can 29¢
 Squash 303 Can 25¢
 Tomatoes 2 303 Cans 45¢

Flour 5-Lb. Bag 49¢
 Tomato Paste 2 5-Oz. Cans 33¢
 Fruit Pies 20-Oz. Pkg. 29¢
 Potatoes 5-Lb. Bag 69¢
 Vegetables 5-Lb. Bag 39¢
 Vegetables 24-Oz. Poly 39¢
 Pizza 1 Pkg. 79¢

Cream Cheese 3-Oz. Pkg. 10¢
 Orange Juice 4 1/2 Qt. \$1.00
 Cheese 12-Oz. Pkg. 59¢
 Longhorn Cheese 10-Oz. Pkg. 59¢
 Margarine 1-Lb. Pkg. 31¢
 Cinnamon Rolls 4 10-Oz. Pkgs. 99¢

Margarine 1-Lb. Pkg. 43¢
 Karo Syrup 1 Pt. Btl. 35¢
 Tamales 15 1/2-Oz. Can 35¢
 Advanced All 49-Oz. Box 79¢
 Noxzema 75c 57¢
 Coffee Mug 2 for only 25¢
 Hair Spray 1 Reg. \$1.19 44¢

Birdseye Frozen FISH STICKS 4 8-Oz. PKGS. \$1

KRAFT VELVEETA 2-LB. LOAF 89¢

COLGATE TOOTH PASTE Super Size 77¢

MINIMAX HORTON-MCCOMBS



Rusk Eagles In Bi-District Play

The Rusk Eagles, who won the District 22-AA title last week by taking two out of three games in the playoff...

Rites Are Held For Mrs. Ethel E. Wales

Mrs. Ethel E. Wales, 74, resident of the Rusk community for 40 years, died January 15 and was buried in the Village Mills cemetery...

March Session Of District Court To Begin Tuesday

The March session of the District Court will begin Monday with a large number of civil cases on the docket.

PERSONAL

Guest in the home of Harold and Beth Reppond on last Sunday were Mr. and Mrs. E. E. Reppond of Zavalla, Mo. and Mrs. Ben Reppond and family of Rockland, Mo.

Pentecostal Church To Hear Talks

The United Pentecostal Church will have a series of short talks directed by the pastor, Rev. Vernon Kirkland, beginning Thursday, February 23.

Dog and Forest Wildlife Group To Meet March 2

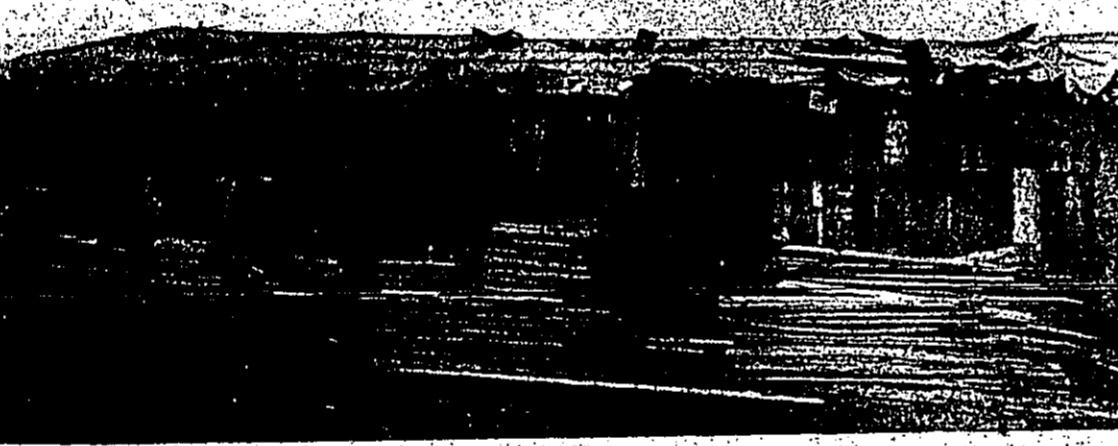
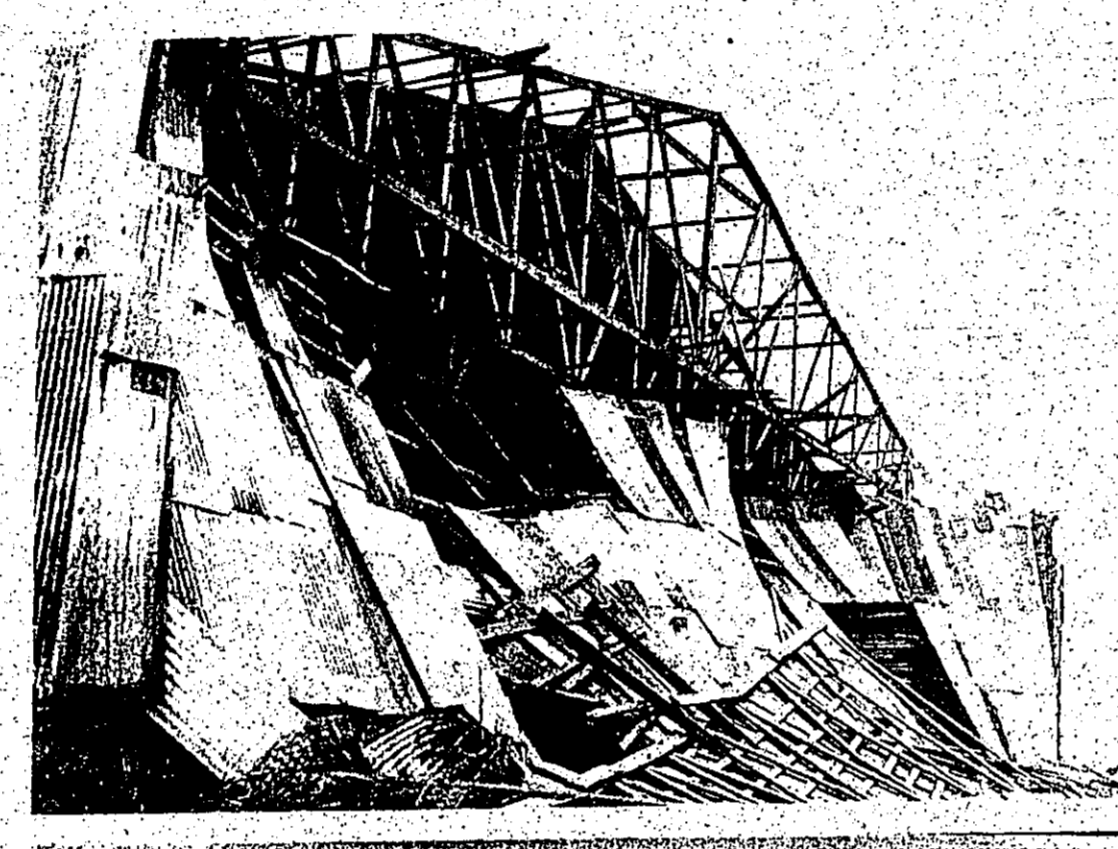
The Jasper, Newton, Hardin and Tyler County Dog and Forest Wildlife Protection Association will have a special meeting Thursday, March 2, at 7:00 p.m. in the Madison County courthouse at Kuykendall.

BOWLING NOTES

Team standings: Clemmons Insurance, 63-21-6611; Best Insurance, 63-24-6595; Chester State Bank, 51-45-6530; Stephens Lumber Company, 40-36-6416; Meador Furniture, 25-7-47-36.



Ticket Booth At Amphitheatre Damaged By Tornado



These photos show damage done by tornado at Woodville Lumber Company



City commissioners and Mayor E. W. Gassloff recently toured Woodville to inspect its sanitary code observance by residents and to spot areas that needed to be cleared by occupants in order to meet the city code.

Warren Girls, Big Sandy Boys Win Tournament. The Warren girls and the Big Sandy boys were first place winners in the Warren Baseball Tournament Thursday, Friday and Saturday in the Warren area.

*What Dam B Folks Are Doing

Fairview Church had fifteen members present at the Women's Conference in Spring Tuesday night, February 14. Mr. and Mrs. Edd Hart and family spent Sunday with her parents, the Dick Barclays.

Rites Are Held For Mrs. Bevil

Funeral services for Mrs. Allen George Bevil, 58, of Utah, California and formerly of Warren, Texas, were held at 2 p.m. Wednesday in Edward's Funeral Home in Woodville.

Hudson Resigns As Trinity-Neches Scout Executive

George B. Morgan, president of the Trinity-Neches Council, Boy Scouts of America, has announced that he will resign as executive of the council, effective April 1 in order to accept a promotion to the national staff of the Boy Scouts of America.

MIDWAY NEWS

Mr. and Mrs. Al Adams of Houston spent the week end with his mother, Mrs. H. W. Adams.

To Celebrate 60th Anniversary



Young Homemakers Hear Talk On Housing Monday

Young Homemakers Hear Talk On Housing Monday

The Young Homemakers of Texas had their monthly meeting Monday night. Attending the meeting were Mary Alice Fortenberry, Donna Gillespie, Carol Gillespie, Virginia Sheffield, Lennie Mae Gillespie, Prudence Carol Gillespie, Ruby sisters, Karen Lowery and Gay Nell Fortenberry.

BPW Club Hears Travogue At February Meeting

The BPW Club heard a presentation by Mrs. M. J. Davis at their February meeting. The presentation was on the importance of the home and the role of the woman in society.

LIVESTOCK REPORT

The market for livestock was steady in the area. Cattle prices were firm, and hogs were in demand.

FROM OUR Correspondents

Next Sunday Rev. Claude Reid of Warren will bring the 11 o'clock messages at Madison Chapel Church, Sunday night, Rev. J. D. Helms of Mt. Enterprise will conduct services.

Roy Daigle, Jr., Promoted To Airman 2nd Class

Roy J. Daigle, Jr., son of Mr. and Mrs. Roy J. Daigle Sr. of S. Rt. 1, Woodville, has been promoted to airman second class in the U. S. Air Force.

CAMPGROUND NEWS

Mr. and Mrs. Ernest Fortenberry, Clifton and Freda spent Saturday night in Beaumont visiting their sister, Mrs. Eugene Gilchrist and Mr. and Mrs. Perry Nelson, and Mrs. J.G. Fortenberry, East Friday.

Texas Public School Week Set For March 6-10

Community leaders are sponsoring the celebration of Texas Public Schools Week which has been traditionally set as the first full week in March. This year it will be observed from March 6 through March 10.

Colmesneer Club Meeting

The Colmesneer Club met on Monday night for their monthly meeting. The meeting was held at the home of Mrs. J. G. Fortenberry.

Colmesneer Club Meeting

The Colmesneer Club met on Monday night for their monthly meeting. The meeting was held at the home of Mrs. J. G. Fortenberry.

ANSWER THE CALL OF THE Mustang! BRING YOUR CAR AND GET JACK'S OFFER! LET'S TALK PICKUPS! JACK LANE FORD, INC. 104 Pine Street Phone BU 3-2526 Woodville

YOUR MONEY EARNS MORE! Savings Certificates Held to Maturity... 5% Interest Paid... Best & Co. 1/3 off NEW CLOSING TIME: 5:00 P.M.

YOUR MONEY EARNS MORE! Savings Certificates Held to Maturity... 5% Interest Paid... CITIZENS STATE BANK Member F.D.I.C. BU 3-2561 102 W. Bluff Woodville

THE EAGLE'S NEST By Paula Childress. On Tuesday, February 14, the K.H.S. volleyball team played a game in Silsbee, Co. Each Norman Turner is coaching the girls' team this year.

FAIN THEATRE THIS WEEK Show Times... Sale Drying Temperature Soft Clothes! High Speed Clothes Dryer. SULLIVAN'S WOODVILLE, TEXAS

COLMESNEIL NEWS

Mr. and Mrs. J. O. Harrington and children... Mrs. J. O. Harrington and children visited her mother...

THE CHURCH PAGE IS SPONSORED BY THE FOLLOWING TYLER COUNTY BUSINESSES:

- CITIZENS STATE BANK BU 3-2561 102 W. Bluff Woodville
MANN FURNITURE BU 3-3740 206 W. Bluff 'W.B. SERVICE OR SALE'
JACK LANE FORD, INC. BU 3-3526 104 Pine
TYLER COUNTY BOOSTER BU 3-2434 N. Charlton
HAIRSTON DAIRY BAR BU 3-2560 418 S. Mag.
BEST PHARMACY BU 3-2163 Woodville
J. B. BEST & CO. BU 3-2124 Woodville



- CHESTER STATE BANK Chester, Texas
A & M MOTOR CO. INC. BU 3-2534 S. Mag.
DAVIS FOOD MARKET Warren, Texas
MCCLURE FURNITURE STORE BU 3-2232 305 N. Mag.
BIRDWELL'S DEPT. STORE BU 3-2591 208 W. Bluff
MAGNOLIA DRIVE-IN GROCERY
WHITE'S AUTO STORE Mr. & Mrs. Johnny Ashworth 205 W. Bluff BU 3-3722
GLOBE-MANN INSURANCE AGENCY BU 3-2528 104 W. Bluff

ASSEMBLY OF GOD, COLMESNEIL... COLMESNEIL BAPTIST CHURCH... MT. OLIVET BAPTIST CHURCH... CHURCH OF CHRIST, DAM B... SUGGER METHODIST CHURCH... WARREN METHODIST CHURCH... CHURCH OF CHRIST, FRED... MT. ZION BAPTIST CHURCH... DOUQUETTE FIRST BAPTIST CHURCH... OAK GROVE BAPTIST CHURCH... ACME BAPTIST CHURCH... ENON BAPTIST CHURCH... HARTMAN BAPTIST CHURCH... HARTMAN BAPTIST CHURCH... BETHLE BAPTIST CHURCH... CANYON CREEK BAPTIST CHURCH... CENTRAL BAPTIST CHURCH... CHESTER BAPTIST CHURCH... COBB MILL BAPTIST CHURCH... RATS, WOODVILLE... MANN FURNITURE... JACK LANE FORD, INC... TYLER COUNTY BOOSTER... HAIRSTON DAIRY BAR... BEST PHARMACY... J. B. BEST & CO.

LOW COST CLASSIFIED ADS GET RESULTS

WANT ADS cost little and get BIG results. Minimum charge is \$1.00 or 5 cents per word. Classified display, 10 cents per column inch. ALL LETTERS OF APPRECIATION are the same as classified. NO BLIND want ads accepted using the Tyler County Booster as the address. DEADLINE on want ads, as well as news, is TUESDAY at NOON before the paper is published on the following Thursday.

LEGAL NOTICES: The State of Texas vs. Marvin H. Bennett. Greeting: You are commanded to appear by filing a written answer to the plaintiff's petition at or before 10 o'clock A. M. of the first Monday after the expiration of 42 days from the date of issuance of this Citation, the same being Monday the 20 day of March, A. D. 1967, at or before 10 o'clock A.M. before the Honorable District Court of Tyler County, at the Court House in Woodville, Texas.

REAL ESTATE: If you are seeking seclusion, this should suffice - 1 A., fenced, 6 R good house, fireplace, several storage houses on concrete floors, 70 varietal kind fruit trees, one mile off hardtop road. Only \$4,700. 4 A wooded, branch and spring, nice lake, 3 BR house and camp. Co. rd. front, just off of 69. Nice big garden space. 20x200 ft. lot, camp fully furnished, storage building, 112 ft. well, steps, only \$3,995. Campers Cove, also 2 BR fully furnished, new, lot 10x40, well, balance. 3 beautiful lots together, faces Lake Ivanhoe, All 3 for \$2,650. 3 lots 10x100 each. Sportsman Lodge, \$1700, also one lot 10x100 for \$600. 6.8 A wooded, 69' hardtop road, 2 BR, den, separate kitchen and dining room, fully furnished, lake, 40-27-10-10-20 A. all unimproved land. Garage, hardware store, grocery store, chicken ranch, cats, name it, I have it. I will try hard to locate it, large or small contracts, just the same professional handling.

FOR RENT: Beautiful 2 bedroom home with large den and fireplace, enclosed breezeway, good well, 5 acre landscaped lot, paved road frontage, excellent hunting area. 23 acres, improved pasture, orchard, garden, good well, fenced and cross fenced, 2 bedroom home with guest house, 1 acre enclosed landscaped yard, perfect for retirement. Furnished camp, large lot with frontage on Neches River, good well, boat and boat house, ramp with electric lift, immediate possession, only \$4500. 44.21 acres with frontage on U. S. 190, 2 bedroom home, guest house, well stocked lake, springs, creek thru woods, well, boat and boat house, ramp with electric lift, immediate possession, only \$4500. Beautiful 3 bedroom, 2 bath, Gold Medalium brick home, 13 acres, paved road frontage, very nice property and price reasonable. Very nice 2 bedroom home with 2 landscaped lots near center of town, priced very low, can be financed. 61 acres with improved pasture, stock tank, good road, branch with lake possibility, beautiful building site. 110 acres with frontage on large creek, paved road frontage, excellent hunting and fishing, timber value, price reasonable and can be financed. 80 acres with road frontage, timber value, price reasonable, excellent hunting area. 45 acres near Dam B lake, wooded, paved road frontage, beautiful building site. 30 acres near Dam B lake, paved road frontage, beautiful building site. EXTRA SPECIAL - Complete furnished home with 2 lots, at Lake B, well, good property and a bargain at \$2,995.

TYLER COUNTY BOOSTER BUSINESS & PROFESSIONAL DIRECTORY. Manly Furniture Co., Pelly's TV, Jarrot's Pharmacy, Globe-Mann Ins. Agency, George A. Reynolds Bookkeeping & Tax Service, Tot N' Gift Shoppe, Shepherd's Gulf Service.

TIN BARN. PLYWOOD, SHEETROCK, ALUMINUM, ROOFING. 829-5521 DIBOLL, TEXAS.

77 To Take Truck Hire

FOR SALE - Tested hay... FOR SALE - 4000 lbs. of... FOR SALE - 4000 lbs. of... FOR SALE - 4000 lbs. of...

FOR SALE - Tested hay... FOR SALE - 4000 lbs. of... FOR SALE - 4000 lbs. of... FOR SALE - 4000 lbs. of... FOR SALE - 4000 lbs. of... FOR SALE - 4000 lbs. of... FOR SALE - 4000 lbs. of... FOR SALE - 4000 lbs. of... FOR SALE - 4000 lbs. of... FOR SALE - 4000 lbs. of...

TO BUY, SELL, RENT, CALL BU 3-2434. Booster Ads Work!

TYLER COUNTY BOOSTER BUSINESS & PROFESSIONAL DIRECTORY. Manly Furniture Co., Pelly's TV, Jarrot's Pharmacy, Globe-Mann Ins. Agency, George A. Reynolds Bookkeeping & Tax Service, Tot N' Gift Shoppe, Shepherd's Gulf Service.

WANTED: Pine and Hardwood Saw Timber BY W. T. Carter & Bro.

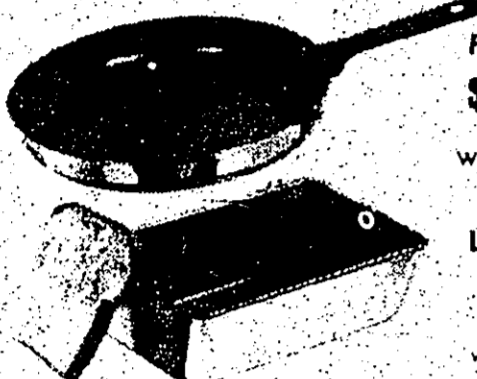
We Give QUALITY STAMPS

SPECIALS THURS.-FRI.-SAT. FEB. 23, 24, 25



Redeem This Week's Coupons!

Add these pieces to your TEFALON SET



FRY PAN \$1.88 WITH COUPON

LOAF PAN \$1.88 WITH COUPON

ALSO THIS WEEK

"WASHINGTON FORGE"

HAM SLICER ONLY 99c WITH COUPON



DOESKIN TOILET TISSUE 8 ROLLS 98c

MRS. TUCKER'S OIL 48-OZ. JUG

79c



GLAD SANDWICH BAGS 75 CT. 29c

KRAFT'S QT. JAR

59c

PET EVAPORATED

MILK

5 TALL CANS ONLY

89c

VALUABLE COUPON

MOUNTAIN GROWN FOLGER'S COFFEE

25c

WITH THIS COUPON AND PURCHASE OF \$5.00 OR MORE COUPON EXPIRES AFTER FEB. 25



REG. OR SUPER KOTEX 3 FOR \$1.00



8c OFF REEF MOUTH WASH MED. SIZE 59c



STRIPE TOOTH PASTE FAMILY SIZE 79c



MEN'S SOFT STROKE SHAVE CREAM 89c



GLASS COFFEE MUGS 4 FOR 79c



BUTTER MILK HALF GAL. 39c

"LET'S GO TO THE RACES" FINAL RACE

OF THE SEASON THIS WEEK. BE SURE TO GET YOUR CARDS NOW FOR THE GRAND FINALE, IT'S NOT TOO LATE TO JOIN THE WINNER'S CIRCLE.

BE SURE TO REDEEM THIS WEEK'S COUPONS FOR 400 MORE EXTRA FREE QUALITY STAMPS



RED, ORANGE OR YELLOW HAWAIIAN PUNCH

3 46 OZ. CANS \$1.00

BAMA APPLE JELLY 3 18-OZ. \$1.00

SUGARY SAM YAMS 4 2 1/2 CANS \$1.00 FRESH NORTHERN FED PICNIC STYLE

PORK ROAST LB. 29c

CHUCK ROAST HEAVY BEEF LB. 39c

ARM SWISS STEAK LB. 69c

SHOULDER STEAK HEAVY BEEF LB. 49c

CHUCK ROAST BONELESS LB. 69c

FRESH LEAN CHUCK GROUND LB. 59c

Sliced BOLOGNA ALL MEAT LB. 59c

AMERICAN CHEESE SLICED LB. 69c

Hormel Little Sizzlers 12-OZ. PKG. 59c



FOLGER'S MOUNTAIN GROWN

COFFEE

WITH COUPON AND \$5.00 OR MORE PURCH.

LB. CAN

25c

FRESH CHICKEN

HENS

FOR BAKING

LB.

19c

Sunnydale Sli. BACON LB. 69c

Smoked Sausage NEUHOFF CONTINUOUS LINK LB. 69c

APPLES

RED DELICIOUS ORANGES OR GRAPEFRUIT YOUR CHOICE, EACH

5c

FRESH BROCCOLI BUNCH 19c

RUSSET POTATOES 8 LBS. 49c

YELLOW ONIONS 3 LBS. 29c

CELLO CARROTS 2 LB. PKG. 19c



RICE 5 LB. BAG 49c

KRAFT FRENCH DRESSING 8 oz. 29c

KRAFT ITALIAN OR SALAD SECRET DRESSING 8 OZ. 35c

LIBBY'S TOMATO JUICE 3 46-OZ. CANS \$1.00

LIBBY SLICED PINEAPPLE 1 1/2 CAN 25c

PINK BEAUTY PINK SALMON NO. 1 CAN 69c

DUNCAN HINES PAN CAKE MIX 3 2-LB. PKGS. \$1.00

KEN-L-RATION REG. OR LIVER DOG FOOD 6 CANS \$1.00

FLOOR WAX AERO WAX 27 oz. 69c

AMERICAN MAID SWEET PICKLES QT. 49c

LIBBY'S FRUIT COCKTAIL 4 303 CANS \$1.00

RANCH STYLE BEANS 6 300 CANS \$1.00

GOLDEN GRAIN MACARONI & CHEESE 3 7 1/2 OZ. 49c

McCORMICK'S BLACK PEPPER 1-OZ. SIZE 39c

RENUZIT AIR FRESHENER 7 oz. 49c

EASY OFF CLEANER 15 oz. 39c

BEANS 10 300 CANS \$1.00

JACK SPRAT PORK AND



REG. OR SUPER KOTEX 3 FOR \$1.00



8c OFF REEF MOUTH WASH MED. SIZE 59c



STRIPE TOOTH PASTE FAMILY SIZE 79c



MEN'S SOFT STROKE SHAVE CREAM 89c



GLASS COFFEE MUGS 4 FOR 79c



BUTTER MILK HALF GAL. 39c