

HAPPY NEW YEAR

The Tyler County Booster

Volume 40—Number 14

Woodville, Texas 75799 Thursday, December 26, 1968

Price 10¢ copy

Booster Bits

By WILEY POSTON

Since the paper is out early this week, we are sorta caught between Christmas and New Year. So we will start off with wishing everyone a Merry Christmas and a happy New Year, and speaking of New Year, things in Tyler county are really looking up. We have seen a lot of progress in '68 and there are a lot of new things and changes in store for '69. We just hope the spirit of 'Progress' catches on and keeps moving forward. A lot of new people with new ideas, money, and "know-how" are taking a real interest in Tyler county and we should see things really getting underway in '69. I, for one, would like to see a lot more enthusiasm toward our historic heritage that can be very helpful in bringing more tourists dollars our way. I feel a little ashamed for not having worked harder with our historical society group that have worked so untiringly in an effort to pro-

untiringly in an effort to promote our heritage. I don't imagine my great-grandfather, or preacher J. B. Masterson, or my Grandfather Mac Wood who taught some of the earliest school in Tyler county, would appreciate me being neglectful in preserving our heritage. So I plan to be 'available' in '69 for anything I can do along this line.

We were sure proud to find that our pal ex-Mayor Bill Gaslight was getting down to the store a little more lately. Bill had a rough go, but like so many sturdy East Texans, he is going to be OK.

Bobby Kinnon told us the Scouts had some more of those metal harrets for sale and you can check with him at the Citizens State Bank if you need some of them. We are very proud of Scouting in Tyler county and through the dedicated efforts of some of our leading citizens who are working with the Scouts, we are producing some fine boys that will make

(Continued on page 6)

Oil Companies'

Suit Against Warren

School Set January 6

The two suits against Warren Independent School District in which Atlantic Refining-Sinclair Oil are contesting the school's evaluation of company property has been consolidated into one suit and set for trial January 6.

District Judge H. A. Cox has disqualified himself from presiding over the hearings and Judge Gordon Gary of Beaumont has been assigned here for the trial.

A special venire of petit jurors will be called from which to select a jury to hear the case.

The lawsuit is expected to last from two to three weeks.

Silsbee Man Dies

When Road Grader

Overturns At Park

Avery Vincent of Silsbee was killed Friday at Magnolia Ridge Park at Dam B when a motor grader he was operating turned over on him.

The accident was investigated by the Tyler County sheriff's department. Justice of the Peace Joe Loggins conducted an inquest and ruled accidental death.

The road grader was going down hill and the wheels sank in soft dirt and overturned.

Funeral services for Mr. Vincent were held Sunday in Silsbee, where he had lived for 12 years. He was a native of Louisiana.

Amount	Tax	Amount	Tax
\$.01 - \$.42	\$.00	\$ 13 - \$ 13.37	.21
.43 - .87	.01	13.38 - 13.72	.22
.88 - 1.32	.02	13.73 - 14.07	.23
1.33 - 1.77	.03	14.08 - 14.42	.24
1.78 - 2.22	.04	14.43 - 14.77	.25
2.23 - 2.67	.05	14.78 - 15.12	.26
2.68 - 3.12	.06	15.13 - 15.47	.27
3.13 - 3.57	.07	15.48 - 15.82	.28
3.58 - 4.02	.08	15.83 - 16.17	.29
4.03 - 4.47	.09	16.18 - 16.52	.30
4.48 - 4.92	.10	16.53 - 16.87	.31
4.93 - 5.37	.11	16.88 - 17.22	.32
5.38 - 5.82	.12	17.23 - 17.57	.33
5.83 - 6.27	.13	17.58 - 17.92	.34
6.28 - 6.72	.14	17.93 - 18.27	.35
6.73 - 7.17	.15	18.28 - 18.62	.36
7.18 - 7.62	.16	18.63 - 18.97	.37
7.63 - 8.07	.17	18.98 - 19.32	.38
8.08 - 8.52	.18	19.33 - 19.67	.39
8.53 - 8.97	.19	19.68 - 20.02	.40
8.98 - 9.42	.20	20.03 - 20.37	.41

NOTE: For each additional 24¢ of purchase OR fraction thereof, add 1¢ to the tax.

4% Sales tax schedule is for collection inside Woodville city limits only.

Civil Cases Monday To End Court Session

The fifth and final week of this session of 88th District Court will open Monday, December 30, with a number of civil cases on the docket.

The docket shows the following cases set for trial:

Charles Edward Cruse vs. Swint; H. W. Kilson vs. Continental; Ernie S. J. Mann vs. Transamerica Insurance Co.; Key Life Insurance Co. of South Carolina; Jettie D. Riley vs. Woodville Lumber Company; Wilco Machine Works vs. Gilbert Wright; W. L. Duff vs. General Motors; et al; T. H. Evans vs. Frank Morris; et al; Elton White vs. Liberty Mutual Ins. Company; Leroy Trucks vs. Woodville Lumber Company; Almer Bell, et al vs. Howard Burgrave, et al; Charles M. Davis, Jr. vs. Southern Pacific.

County Officials To Take Office

Two new county officials will take office January 1 and others will begin new terms as a result of the 1968 elections.

The new officials taking office for a first term are Tom Sawyer, tax assessor-collector; and J. Carl Shepherd, precinct clerk.

Re-elected and assuming new terms are Sheriff Grady Ray and Precinct Two Commissioner Leon Fowler.

Rois L. Brockman, who is serving out the unexpired term of Clyde E. Smith, Jr., who resigned, will also take the oath of office for his first elective term.

Precinct officials who will take office January 1 include J. H. Collier, precinct one constable; Cecil Barnes, precinct two constable; Harley Crews, precinct three constable; Leslie Dubose, precinct three justice of the peace; and C. B. Hicks, precinct four constable.

In district offices, District Judge R. A. Cox will begin a new term while R. S. (Stanley) Cox will take office as district attorney to succeed R. A. Richardson.

Clipping Tells Story Of 1936 B-District Football Game

back with a display of power. They drove hard and did not penetrate once within the 20-yard zone. They, too, failed to score. For the remainder of the half neither side had much advantage and most of the game was played in the center of the field.

The heavy Grapeland line played a hard, steady game with Jack Peacock hunky six-foot-five 200-pounder standing out in his work. They blocked, ran interference and held the Eagles special in tight places, to keep them from scoring.

But the lively shift ball carrier for the Eagles was the leader of his team in making much of the game that they did. Peacock played a nice game as did Kent, quarter back, who called the game.

The Eagles who were the under dogs because of Grapeland's advantage in weight, played heads-up football all afternoon.

Woodville's starting line-up was: Starring in the backfield as both a powerful offensive player and also tackle was Childress. He was ably assisted by James, the Woodville punter, and by Franklin, an especially good defensive man, and Walton, a good all round backfield man in the line. All the Eagles players turned in the best game of the season when they fought and

Sales Tax Goes In Effect Here January 1

THREE CHARGED IN BANK BREAK-IN AT HOUSTON

Three young men from Tyler County were caught Tuesday night in the drive-in-depository of Chemical Bank and Trust Company in Houston.

The three were busily loading silver coins, amounting to over \$800, into a pickup truck when two officers arrived in answer to a ultrasonic burglar alarm.

Two of the young men are from Colmesneil and the other is from Rockland. They are 18, 19 and 21 years old.

One of the arresting officers was a rookie policeman who had just graduated from police school and been on the force about three hours.

The attempted burglary took place even though a sign on the depository window warned that it was protected by a burglar alarm. When asked about this, the 18-year old is reported to have said "Stinks, I can't read."

However, that did not keep the three from being charged with bank burglary.

Driver Hurt When Mail Truck Overtakes



The mail truck running from Lufkin to Woodville, went out of control last Thursday and overturned four miles north of Colmesneil. Pictured above is the truck, background, and part of the camper, both loaded on it. The debris in foreground is the rest of the demountable camper. The driver, Ramsey Blighman, was brought to Tyler County Hospital and later transferred to Beaumont. He suffered a broken neck, fractured vertebrae and other injuries and remains in a serious condition.

Petit Jurors Called For Final Week Of 88th District Court

Petit jurors who have been summoned to report for the final week of this session of 88th district court beginning December 30 are:

J. C. Barlow, Spurger; Iva Barnes, Chester; Roy J. Barton, Chester; L. Ree Bass, Chester; Staunil G. Cleveland, Spurger; Oscar Irey Clowers, Chester; Frank Collier, Jr., Hillister; Guy Connor, Warren; R. L. Crumpler, Spurger; R. E. Cunningham, Harold T. Davis, T. J. Davis, Sr.; S. E. Diff, J. R. Elliott, and Elton Evans all of Warren;

Eva Lee Flynn, Warren; Kenneth Freeman, Ross Gardner, Lucille Gibbs, Alberta Gilder, Charles Lee Graham, Dick Gregory, Homer Gregory, all of Colmesneil; Lester G. Hooks, Bill Jenkins, Newton Jordan, all of Free;

Bobby Ray Kinnon, Mrs. Perle Lee Kirtley, J. W. Knight, Veda Lancaster, J. K. W. McCanta, Mrs. Mary L. Mann, all of Woodville; Doyle Moore and Edward Morrison, both of Free; Jewel Kohl Murphy, Dora V. Nettles, Luther Owens, all of Woodville; Kelsie Stearns, Mrs. Zelma Seaman, Mrs. E. B. Walker, all of Chester; Anable A. Weaver, Warren; Andrea Welch and Mrs. Gordon Whitworth, Chester.

1936 Eagles Won Close Bi-District Over Grapeland

Back in 1936 the Woodville Eagles won District 30-B, then advanced to the Region Eight playoff with a 6-0 win over the Grapeland Sandies. Although neither team scored, the Eagles won on penalties by advancing into the 20 yard zone twice to the Sandies one.

The game was played in the Woodville field which was muddy and slowed down both backfields. The Eagles were the underdogs, since Grapeland had been picked to win.

The Eagles lost the regional game, however, to Navasota. Some of those who made the trip to Navasota remembered that it was a cold, dreary night—especially on the return trip.

But to get back to the Bi-District game, it is interesting to look over the program which was printed for the game. It was a simple folder on heavy colored paper with most of the 1936 business and professional men represented as advertisers.

Some of the names sponsoring the program are still active in their businesses and professions. Others will be remembered by older residents.

Advertisers included Harrison Engineering and Construction Corporation, T. C. Rock, McClure's Cafe, H. & H. Cash Store (Joe Ransick), F. F. Matthews, J. B. Best, Young's Pharmacy, Peoples Garage (J. Robert McCombs), Adams Motor Company, Lee Undertaking Company, Magnolia Garage, Long-Luff Lumber Co., Pain Theatre, J. E. Wheel, Star Cafe, Citizens State Bank, Adams & Sutton (Colmesneil), Bracken Hardware Co., Jay Kelley, Palace Barber Shop, Parsons Humble Service Station, Tyler County Drug, Dr. R. B. Barclay, Sutton & Pain Chevrolet Co., Woodville Tailor Shop, Hopson Service Station, Davis Brothers, C. V. Comp-ton, Glenn's 5 and 10 Store, P. H. Powell, Ezra Eaves, E. D. Walker, Otis Riley, Blanchard Bakery, Doc McGrew, M. C. Tatum, Sheriff McGowan, J. Z. Mills & Sons, Hugh Davis, Joe Markwich, P. B. Sullivan, Roy Pate, B. V. Ferguson.

As for the game itself, a yellowed clipping reproduced here best tells that story.

Yarborough To Seek 100,000 Acre Park

The National Park Service is proposing about 48,000 acres for a Big Thicket National Recreation Area while Sen. Ralph Yarborough will ask for a minimum of 100,000 acres for a Big Thicket National Park. Details of the National Park Service proposal for a Big Thicket National Recreation Area were revealed in Silsbee for the first time at a public meeting of more than 150 conservationists from throughout Texas.

Speaking for the National Park Service was Ernest Borgman of Corpus Christi, superintendent of Padre Island National Seashore. Among others speaking at the meeting, which was cosponsored by 22 conservation groups, were U. S. Rep. Robert Eckhardt of Houston and Mrs. William Hancock of Austin, co-chairman of the Texas Federation of Women's Clubs special projects on the Big Thicket.

Edward C. Fritz of Dallas, chairman of the board of governors of the Texas Committee on National Resources, acted as chairman of the meeting; Borgman said that the National Park Service has given further consideration to a proposal to preserve representative samples of the unique ecological area in East Texas known as the Big Thicket.

Based on additional studies, the National Park Service plan now envisioned a large Big Thicket Environmental Conservation Zone comprising 1.5 mil-

The city's one percent sales tax which was approved in an election September 21 will be collected on all purchases within the city limits beginning January 1.

The tax will be collected along with the state 3 percent sales tax and will be reported and paid to the state comptroller by each merchant on the state form, thus will not add to the merchants' bookkeeping chores.

At the time of the election, city council members expressed the opinion that a sales tax was the most equitable way to increase the city's revenues. In order to take care of growing expenses of the city government, voters evidently approved and passed the sales tax proposal.

City council members estimated that the sales tax will average around \$5 per capita per year for city residents. The tax must be collected on all purchases of items which are taxable under the state sales tax. Merchants will collect on a 4 percent sales tax schedule (see table at left).

Stores or businesses outside the city limits will not collect additional tax. But persons living outside the city limits will pay the 4 percent rate on purchases made within the city. Most surrounding towns are now collecting on the 4 percent rate. At least to put the tax in effect was Silsbee, where the tax went into effect October 2.

Brenda Bumstead Named To Who's Who In Colleges



Brenda Bumstead, daughter of M. and Mrs. Arthur Bumstead of Warren, has been chosen to appear in "Who's Who Among Students In American Colleges and Universities."

Brenda is a student at East Texas Baptist College in Marshall. She is a graduate of Warren High School.

The honor is conferred annually on outstanding student leaders from approximately 900 colleges and universities in the United States. Graduate students are eligible to be nominated, and 12 were nominated from East Texas Baptist College. The nominating committee is composed of representatives of the administration, faculty and student body and submitted to the national office.

Booster Printed Early This Week

The Booster is being printed early this week in order to allow employees to take off early Tuesday afternoon for the Christmas holiday.

Subscribers will receive the paper in the mail Thursday, the usual time, since Christmas falls on Wednesday and no mail delivery will be made that day.

Persons sending in news items that arrived too late for this issue are asked to be patient and they will appear in the January 2 issue.

Reeves in Custody In California; Held On AWOL Charges

Timothy Wayne Reeves, who escaped from Tyler County jail two weeks ago, is in custody of army authorities at Camp Pendleton, California, where he faces charges of desertion.

Reeves will be held for Tyler County authorities after the army completes disciplinary action against him.

PINES THEATRE

Wednesday & Thursday, DEC. 25-26

Extraordinary Entertainment!
WALT DISNEY presents
Follow Me Boys!

Friday and Saturday, DEC. 27-28
A Great New Western... All New... in Color

Sean Connery is SHALAKO!



SHALAKO means Action!
Action means Bardot!

Saturday Late Show - DECEMBER 28

SEE THE ASTOUNDING HUNDRED HORRORS!
TORTURE GARDEN

Sunday & Monday, DECEMBER 29-30

ELVIS shoots the works from dawn to darkroom!

ELVIS PRESLEY
LIVE A LITTLE LOVE A LITTLE

ONE NIGHT ONLY, TUESDAY, DECEMBER 31

4 BIG-BIG FEATURES
NEVER BEFORE SO MUCH ENTERTAINMENT IN ONE NIGHT... FREE FAVORITE TO THE FIRST 200 PERSONS

BOXOFFICE OPENS ONE HOUR BEFORE SHOWTIME
NO SEATS RESERVED
They Fight! They Scream! They Die!

These Magnificent Men in their Flying Machines

Admission Adults... 2.00 Children... 1.00
FUN FOR ALL

Soaped up cars and souped up boats... dynamite action with illegal whiskey, women and thrills!

This is the worlds' scariest robbery!
THE ROAD HUSTLER

The biggest bundle of them all

VILLANO de sicca
Edward G. Robinson

Also See
The Big T-N-T Show

With JAMES BROWN... IKE and TINA TURNER
ROGER MILLER... And So Many Stars We Couldn't Start to Name Them

SEE ALL 4 PICTURES FOR FREE ADMISSION.
BE AT THE BIG NEW YEAR'S EVE MOVIE PARTY
SHOW STARTS AT 8:30 P.M. AND RUNS UNTIL 1:00
FREE PARTY FAVORITE TO THE FIRST 200 PERSONS

WOMAN'S PAGE

Homemaking Hints

By MRS. MAURINE J. MOONEY, HD Agent

Pasta Products, all members of the spaghetti, macaroni and noodle family, fit into economical meal plans between the Thanksgiving and Christmas holidays.

Their bland flavor teams with foods from milk cheese to highly seasoned sauces.

Store pasta at room temperature in tightly closed containers to keep out dust, moisture and insects.

Check use and care booklets for base in maintenance and care. Be sure adequate instructions are included.

Check handles, lids or other parts designed for convenient storage. Do they require a minimum counter-top space?

Check use and care booklets for base in maintenance and care. Be sure adequate instructions are included.

Check use and care booklets for base in maintenance and care. Be sure adequate instructions are included.

Check use and care booklets for base in maintenance and care. Be sure adequate instructions are included.

Check use and care booklets for base in maintenance and care. Be sure adequate instructions are included.

Check use and care booklets for base in maintenance and care. Be sure adequate instructions are included.

Check use and care booklets for base in maintenance and care. Be sure adequate instructions are included.

Check use and care booklets for base in maintenance and care. Be sure adequate instructions are included.

Check use and care booklets for base in maintenance and care. Be sure adequate instructions are included.

Check use and care booklets for base in maintenance and care. Be sure adequate instructions are included.

Check use and care booklets for base in maintenance and care. Be sure adequate instructions are included.

Woman's Study Club Christmas Program Presented Tuesday

The Woman's Study Club met in the home of Mrs. Wood Fain

for its Christmas program December 17. Mrs. F. M. Archer served as co-hostess.

The program "The Meaning of Christmas" was presented by Mrs. M. A. Fain and Mrs. Curtis Garner.

Leaders for carol singing were Mrs. David Mann and Mrs. L. M. Fagan.

Club members brought Christmas gifts and over one hundred pairs of gloves which will be given to the Lufkin State School.

Guests attending the meeting were Mrs. Ernest Gasoliti, Mrs. Fletcher Graham, Mrs. Jerry Stephens and Mrs. Mildred Moore.

Navy Nurse Corps Offers Financial Help To Students

The United States Navy offers financial assistance to future nurses exclusively through the Navy Nurse Corps Candidate Program (Hospital Diploma).

This program provides one year of financial assistance to qualified nursing students who are enrolled in a nursing program of at least three academic years.

It was begun this fall in recognition of the fact that a high percentage of Navy nurses are active duty now were members of diploma schools.

Applicants must be enrolled in a hospital school accredited by the National League for Nursing. Applicants must be through 28 1/2 hours of enrollment in the program and in their final academic year.

Applicants must be unmarried at the time of entrance into the program and may not have dependent children of any age.

There are no marriage or dependency restrictions for male applicants. Applicants from 1968 graduates should be submitted by December 20, 1968.

Applicants from 1969 graduates should be submitted by February 15, 1969. All applicants are processed through local United States Navy Recruiting Stations.

PERSONAL
Mrs. F. B. Smith is in Fort Smith, Arkansas, for the transfer of her son and his family.

PERSONAL
Mr. and Mrs. Luther Scoggins are spending Christmas with relatives in Houston.

Young Homemakers State Convention in Dallas January 3-4

"YHT-Key to Better Living" is the theme of the 1969 State Convention of the Young Homemakers of Texas, January 3-4, in the Baker Hotel, Dallas.

More than 600 young homemakers, homemaking teacher advisors, and guests are expected to attend.

Dr. Charles R. King, University of Oklahoma, Norman, Oklahoma, will be keynote speaker for the first general session on Friday morning.

The subject of her talk will be "Unlock the Door to Better Living." On Saturday, Dr. King will moderate a panel of young homemakers on the subject of "Communication With Your Family."

Dr. King is program analyst for Title I, Higher Education Administration, serving 13 colleges and universities in the Oklahoma program.

The man with the potter's wheel will be featured on Friday afternoon. John Frank of Frankona Pottery, Inc., Sapulpa, Oklahoma, will talk on "Hickie Bats or Gems."

Name it, using a potter's wheel to illustrate his points. Exhibits and displays of foods and modern appliances will be hosted by Texas leading manufacturers during the two-day meeting.

The Outstanding Chapter, Outstanding New Chapter, and State Little Sister will be organized with YHT awards for excellence on Friday. Presentations will be made at a luncheon sponsored by Texas Young Cooperative, Young Farmers of Texas, and Young Homemakers. The Outstanding Chapter and New Chapter awards are presented each year to chapters judged to have contributed most toward the growth of individual members and the community. The State Little Sister Award is given to the chapter judged to have the most members.

PERSONAL
Mrs. Esther Wright, left, president of the Woman's Study Club and Mrs. Judy Smith took over the Christmas toys which the club members brought to the meeting, Tuesday, December 17, for the Lufkin State School. Mrs. Smith also donated over 100 pounds of pecans for the school. Mrs. Wright and Mrs. Smith took the gifts to Lufkin last Thursday.

PERSONAL
Mrs. Esther Wright, left, president of the Woman's Study Club and Mrs. Judy Smith took over the Christmas toys which the club members brought to the meeting, Tuesday, December 17, for the Lufkin State School. Mrs. Smith also donated over 100 pounds of pecans for the school. Mrs. Wright and Mrs. Smith took the gifts to Lufkin last Thursday.

PERSONAL
Mrs. Esther Wright, left, president of the Woman's Study Club and Mrs. Judy Smith took over the Christmas toys which the club members brought to the meeting, Tuesday, December 17, for the Lufkin State School. Mrs. Smith also donated over 100 pounds of pecans for the school. Mrs. Wright and Mrs. Smith took the gifts to Lufkin last Thursday.

PERSONAL
Mrs. Esther Wright, left, president of the Woman's Study Club and Mrs. Judy Smith took over the Christmas toys which the club members brought to the meeting, Tuesday, December 17, for the Lufkin State School. Mrs. Smith also donated over 100 pounds of pecans for the school. Mrs. Wright and Mrs. Smith took the gifts to Lufkin last Thursday.

PERSONAL
Mrs. Esther Wright, left, president of the Woman's Study Club and Mrs. Judy Smith took over the Christmas toys which the club members brought to the meeting, Tuesday, December 17, for the Lufkin State School. Mrs. Smith also donated over 100 pounds of pecans for the school. Mrs. Wright and Mrs. Smith took the gifts to Lufkin last Thursday.

PERSONAL
Mrs. Esther Wright, left, president of the Woman's Study Club and Mrs. Judy Smith took over the Christmas toys which the club members brought to the meeting, Tuesday, December 17, for the Lufkin State School. Mrs. Smith also donated over 100 pounds of pecans for the school. Mrs. Wright and Mrs. Smith took the gifts to Lufkin last Thursday.

PERSONAL
Mrs. Esther Wright, left, president of the Woman's Study Club and Mrs. Judy Smith took over the Christmas toys which the club members brought to the meeting, Tuesday, December 17, for the Lufkin State School. Mrs. Smith also donated over 100 pounds of pecans for the school. Mrs. Wright and Mrs. Smith took the gifts to Lufkin last Thursday.

PERSONAL
Mrs. Esther Wright, left, president of the Woman's Study Club and Mrs. Judy Smith took over the Christmas toys which the club members brought to the meeting, Tuesday, December 17, for the Lufkin State School. Mrs. Smith also donated over 100 pounds of pecans for the school. Mrs. Wright and Mrs. Smith took the gifts to Lufkin last Thursday.

PERSONAL
Mrs. Esther Wright, left, president of the Woman's Study Club and Mrs. Judy Smith took over the Christmas toys which the club members brought to the meeting, Tuesday, December 17, for the Lufkin State School. Mrs. Smith also donated over 100 pounds of pecans for the school. Mrs. Wright and Mrs. Smith took the gifts to Lufkin last Thursday.

PERSONAL
Mrs. Esther Wright, left, president of the Woman's Study Club and Mrs. Judy Smith took over the Christmas toys which the club members brought to the meeting, Tuesday, December 17, for the Lufkin State School. Mrs. Smith also donated over 100 pounds of pecans for the school. Mrs. Wright and Mrs. Smith took the gifts to Lufkin last Thursday.

SAVINGS to CHEER a HAPPY NEW YEAR!

ALL FLAVORS DRINK **HI-C** 3 46 oz. Cans **89¢**

- KLEENEX TOWELS Jumbo Roll 37¢
- KLEENEX DESIGNER NAPKINS 75 Count Cellulose Pkg. 29¢
- FACIAL TISSUE 200 Sheets 29¢
- RAINBOW SWEET GHERKIN PICKLES 16 oz. Jar 49¢
- DELICIOUS MEXICORN 2 7 oz. cans 39¢
- TOMSCOTT MIXED NUTS 12 oz. can 59¢
- NABISCO MR. SALTY PRETZELS 10 oz. pkg. 35¢
- NABISCO SNACK CRACKERS 9 1/4 oz. Pkg. 39¢
- RANCH STYLE BEANS 2 9 oz. cans 27¢
- RANCH STYLE BEANS 2 No. 300 Cans 37¢

FROZEN FOOD

- TENNESSEE Blackeyed Peas 10 oz. Pkg. 21¢
- TENNESSEE BLACKEYED PEAS 1/4 lb. poly bag 43¢
- ORE IDA TATER TOTS 2 lb. bag 45¢
- TREASURE CHEST BREADED SHRIMP PIECES 8 oz. pkg. 43¢
- TENNESSEE WHOLE BABY OKRA 1/4 lb. poly bag 45¢

Stock Up For The New Year's Holiday and Get

DOUBLE S&H GREEN STAMPS

With \$2.50 Purchase of More (Excluding Cigarettes)

DELSEY BATHROOM TISSUE

RANCH STYLE BLACKEYED PEAS

With Bacon No. 303 Can 10¢

ALL FLAVORS SOFT DRINKS

GOLDEN AGE

12 oz. Can 5¢

California Iceberg Lettuce

CRISP SLICER CARROTS 1 lb. bag 10¢

WAXED BUTTERBAG TURNIPS 1 lb. 7¢

Quality MEATS

- USDA CHOICE BEEF Round Steak **89¢**
- USDA Choice Tenderized STEAK 99¢
- Rain Blackhawk or Brookshire Bros. BACON 65¢
- Kraft's Philadelphia Cream CHEESE 8 oz. Pkg. 35¢
- Carton's French Onion, Avocado, DIPS Cheese EACH 59¢
- USDA Choice Pikes Peak or Hunt ROAST 79¢
- COHN'S FRANKS 12 oz. Pkg. 45¢
- MOYARK SMOKED PICNICS 35¢
- FOR NEW YEAR'S SALT JOWLS 17¢
- MOYARK BOLOGNA 45¢
- NETTLETON SIZZLE STICKS 53¢
- NETTLETON SLICED MEATS 3 Pkgs. \$1.00
- MAXWELL'S HAM LOAF 3 Pkgs. \$1.00

GLADIOLA

Flour 49¢

5 lb. Bag

ARROW DRIED

PEAS 10¢

1 lb. Bag

MAXWELL HOUSE

Coffee 29¢

Pound Can

MAXWELL HOUSE

SPRITE 39¢

Limit 4 Cartons Plus Btl. Deposit

MAXWELL HOUSE

SOAP 49¢

Reg. Size 6 Bar Pack

REDEEM THIS COUPON FOR 50 FREE S&H GREEN STAMPS

With Purchase of All Scents JOHNSON'S GLAD-AD FRESHNER

Coupon Expires Dec. 31, 1968

REDEEM THIS COUPON FOR 50 EXTRA S&H GREEN STAMPS

With Purchase of \$5.00 or More (Excluding Cigarettes) of Our Family

Coupon Expires Dec. 31, 1968

Peace on earth, good will to men

I heard the bells on Christmas Day
Their old familiar carols play,
And wild and sweet the words repeat
Of peace on earth, good will to men.

And in despair I bow'd my head:
"There is no peace on earth," I said,
"For hate is strong and mocks the song
Of peace on earth, good will to men."

Then pealed the bells more loud and deep:
"God is not dead, nor doth He sleep;
The wrong shall fail, the right prevail,
With peace on earth, good will to men."

—HENRY W. LONGFELLOW, 1863

A Christmas wish from your friends and neighbors at
GULF STATES UTILITIES COMPANY.

Brookshire Bros.

THE BEST FOR LESS

502 North Magnolia • Woodville, Texas

STATE CAPITOL HIGHLIGHTS & SIDELIGHTS

By Vern Sanford

Some dry areas of West and South Texas last year were Christmas presents unwrapped before December 25. It was in the form of a \$10 million master plan for development of Texas water resources, as revealed by the Texas Water Development Board.

Its long-stated recommendation, which proposes moving water westward and southward through an elaborate network of canals and pipelines from Louisiana and East Texas, may leave the suppliers wondering whether it is indeed more feasible to give than to receive.

Highlights of the master plan, compiled over a period of four years, include the following proposals:

Impairment of 12 to 13 million acres feet of surface water annually from Mississippi and transportation uphill through canals from Sulphur and Sabine River reservoirs to the Rio Grande Valley, respectively. It would involve the construction of Texas River and Tule Lake farm areas of West Texas and New Mexico, respectively, to provide water to the Rio Grande Valley.

Construction of 67 major canals and 100 smaller ones, and 100 salt water barriers at a cost of \$2.4 billion. They would contain a total of 34.5 million acre feet of water, or 100 times as much as the state's present water supply.

Trans-Texas and coastal canals would carry water from the North Texas water development to the Texas coast, to the South Texas water development, and from the Texas coast to the Rio Grande Valley. The Rio Grande Valley would be moved through an "obey canal" from an intake from the Rio Grande to the Gulf of Mexico.

Water facilities would include a \$120,000,000 active flood control program, a mobile theater company to perform bilingual plays in the state, and a mobile theater company to perform bilingual plays in the state.

Water facilities would include a \$120,000,000 active flood control program, a mobile theater company to perform bilingual plays in the state, and a mobile theater company to perform bilingual plays in the state.

Water facilities would include a \$120,000,000 active flood control program, a mobile theater company to perform bilingual plays in the state, and a mobile theater company to perform bilingual plays in the state.

Water facilities would include a \$120,000,000 active flood control program, a mobile theater company to perform bilingual plays in the state, and a mobile theater company to perform bilingual plays in the state.

Water facilities would include a \$120,000,000 active flood control program, a mobile theater company to perform bilingual plays in the state, and a mobile theater company to perform bilingual plays in the state.

Water facilities would include a \$120,000,000 active flood control program, a mobile theater company to perform bilingual plays in the state, and a mobile theater company to perform bilingual plays in the state.

Water facilities would include a \$120,000,000 active flood control program, a mobile theater company to perform bilingual plays in the state, and a mobile theater company to perform bilingual plays in the state.

Water facilities would include a \$120,000,000 active flood control program, a mobile theater company to perform bilingual plays in the state, and a mobile theater company to perform bilingual plays in the state.

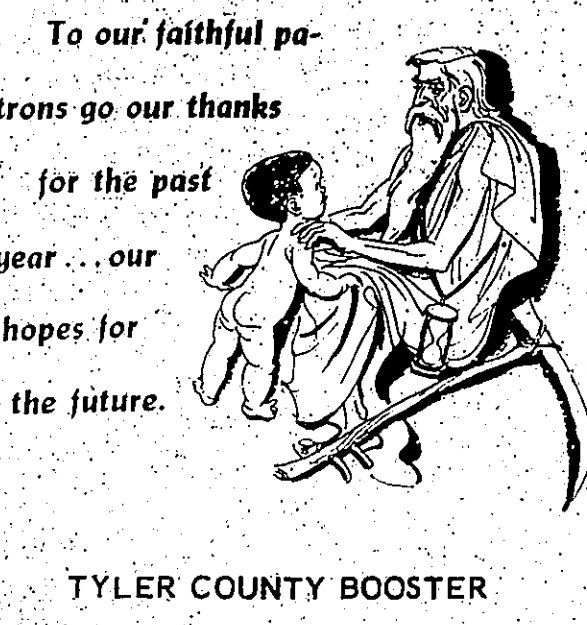
Water facilities would include a \$120,000,000 active flood control program, a mobile theater company to perform bilingual plays in the state, and a mobile theater company to perform bilingual plays in the state.

Water facilities would include a \$120,000,000 active flood control program, a mobile theater company to perform bilingual plays in the state, and a mobile theater company to perform bilingual plays in the state.

Water facilities would include a \$120,000,000 active flood control program, a mobile theater company to perform bilingual plays in the state, and a mobile theater company to perform bilingual plays in the state.

County Agent Reports

By Clinton R. Currie



The Two Torches

Now the tale of the two torches, lit by the state, how they have burned through the long journey through the whole world, the one torch of the state, the other torch of the state, the one torch of the state, the other torch of the state.

Now the tale of the two torches, lit by the state, how they have burned through the long journey through the whole world, the one torch of the state, the other torch of the state.

Now the tale of the two torches, lit by the state, how they have burned through the long journey through the whole world, the one torch of the state, the other torch of the state.

Now the tale of the two torches, lit by the state, how they have burned through the long journey through the whole world, the one torch of the state, the other torch of the state.

Now the tale of the two torches, lit by the state, how they have burned through the long journey through the whole world, the one torch of the state, the other torch of the state.

Now the tale of the two torches, lit by the state, how they have burned through the long journey through the whole world, the one torch of the state, the other torch of the state.

Now the tale of the two torches, lit by the state, how they have burned through the long journey through the whole world, the one torch of the state, the other torch of the state.

The Night Before Christmas

'Twas the night before Christmas, And all through the town, The steeple was bent, The boots were hung, By the oil stove with care, In hopes they would freeze. Each man a new pair. The weary G.I.'s were tucked out in their beds, While visions of their loved ones danced in their heads.

When up on the ridge line, There arose such a clatter— A Chinese machine gun had started to chatter. I rushed out my rifle, extended pieces of close grazing. Contact the county agent of results for further information and in this area.

When up on the ridge line, There arose such a clatter— A Chinese machine gun had started to chatter. I rushed out my rifle, extended pieces of close grazing. Contact the county agent of results for further information and in this area.

When up on the ridge line, There arose such a clatter— A Chinese machine gun had started to chatter. I rushed out my rifle, extended pieces of close grazing. Contact the county agent of results for further information and in this area.

When up on the ridge line, There arose such a clatter— A Chinese machine gun had started to chatter. I rushed out my rifle, extended pieces of close grazing. Contact the county agent of results for further information and in this area.

When up on the ridge line, There arose such a clatter— A Chinese machine gun had started to chatter. I rushed out my rifle, extended pieces of close grazing. Contact the county agent of results for further information and in this area.

When up on the ridge line, There arose such a clatter— A Chinese machine gun had started to chatter. I rushed out my rifle, extended pieces of close grazing. Contact the county agent of results for further information and in this area.

When up on the ridge line, There arose such a clatter— A Chinese machine gun had started to chatter. I rushed out my rifle, extended pieces of close grazing. Contact the county agent of results for further information and in this area.



THE EAGLE'S NEST

The Eagles found going very tough as far as their schedule went this week. They opened with a victory over AAA Silsbee and then ventured to Big Sandy to participate in the tournament over the weekend.

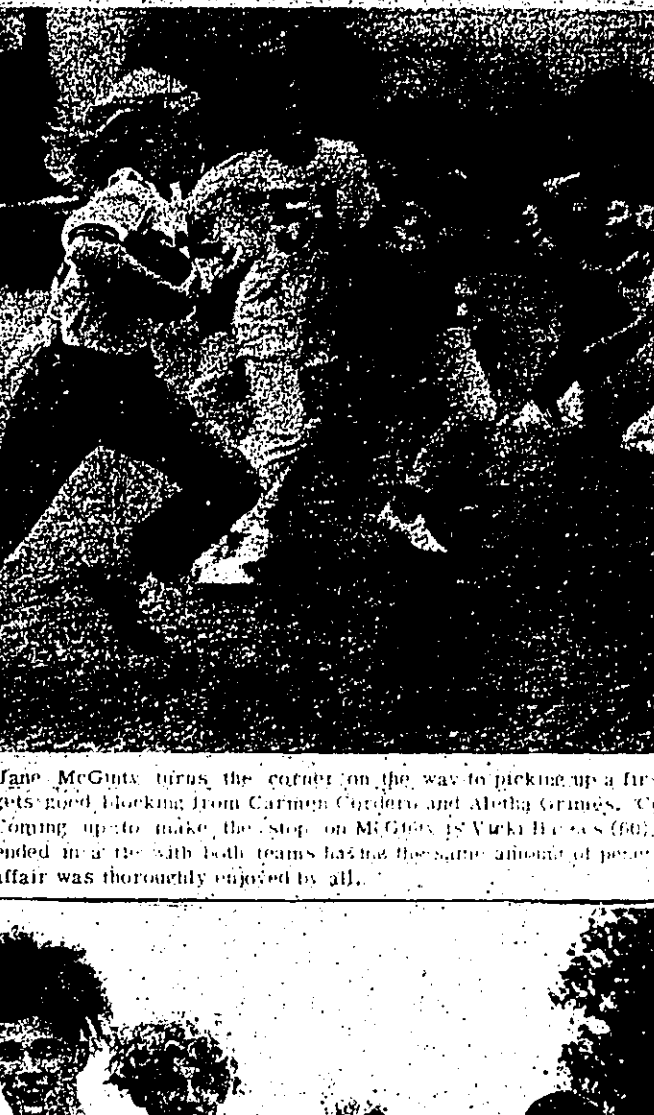
WOODVILLE 59 SILSBEE 53



WOODVILLE 66

Woodville entered the Big Sandy Tournament with the Chester Yellow Jackets and their hostilities out to shellacking them 66-41.

WOODVILLE 66 CHESTER 45



WOODVILLE 41

Woodville then advanced the consolation bracket and met Redland and promptly took their hostilities out to shellacking them 41-15.

WOODVILLE 41 REDLAND 15



WOODVILLE 41

Woodville then advanced the consolation bracket and met Redland and promptly took their hostilities out to shellacking them 41-15.

WOODVILLE 41 REDLAND 15

LOST DOG

South of Collier's Store, Hillister & Spurger area. Contact: A. B. DAVID 1311 - 20th St. Nelderland, Texas 77627 Phone RA 2-6268

Temple To Increase Timber Purchases

Temple Industries will increase its purchases of saw timber in 1969 according to Joe Vanney, executive vice president. In order to supply increased capacity in the company's facilities in both Diboll and Pinedale, Temple anticipates purchasing 95 million feet of saw timber from other districts in 1969 compared with similar purchases of 70 million in 1968.

Veterans Questions And Answers

Q—My husband, a World War II veteran, died in 1968. We did not have any children. My application for a widow's pension was denied at that time because I had only been married to my husband for three years. I am now unable to work because of a disability. Will this be a consideration if I should reapply for a pension?

There's No Future In CARELESS DRIVING

State Farm Auto Policyholders Have Received Dividends For the Past 24 Years

On 1,000,000 Auto Policyholders Have Received Dividends For the Past 24 Years

For the gal who wants everything!

To all our friends and customers, our happy greetings go. We just can't say enough to express the full warmth of our good wishes for all the happiness we hope you'll share in the New Year, and the deep sincerity of our appreciation for your trust and support. Many thanks to you!

ARE YOU?

ARE YOU? Will you? Best savings? Low net cost? A combination you can't beat? CALL ME!

JOHNNY HARRIS 106-W. Holly 283-3004 Res. Warren K17-2983

Jasper Federal

SAVINGS & LOAN ASSOCIATION JASPER, TEXAS

4 3/4%

Plus One S&W GREEN STAMP for each dollar deposited.

Regular Passbook Savings

*Dividends paid or compounded semi-annually

*Add to or withdrawal anytime

*1,000 S&W Green Stamps per account per day

*Minimum term - none

5 1/4%

Savings Certificates

*Issued not less than six (6) months or more than 12 months

*Dividend paid Dec. 30 and June 31

*Automatically renewal

*Minimum Deposit - \$15,000

4 3/4%

Bonus Certificates

*Issued for minimum period of 36 months

*Regular dividends paid semi-annually and 1/2% bonus paid at maturity

*Minimum Deposit - \$5,000

*Automatically renewal

4 3/4%

Bonus Certificates

*Issued for minimum period of 36 months

*Regular dividends paid semi-annually and 1/2% bonus paid at maturity

*Minimum Deposit - \$5,000

*Automatically renewal

TEXAS PRESS ASSOCIATION

H. E. JACKSON, PUBLISHER
CHUCK STAMPS, MANAGING EDITOR
GEORGE BOWLWELL, SPORTS EDITOR
SHARON WRIGHT, PAGE MAKE-UP
SHIBBLE HENDRICKSON, TV/PIST

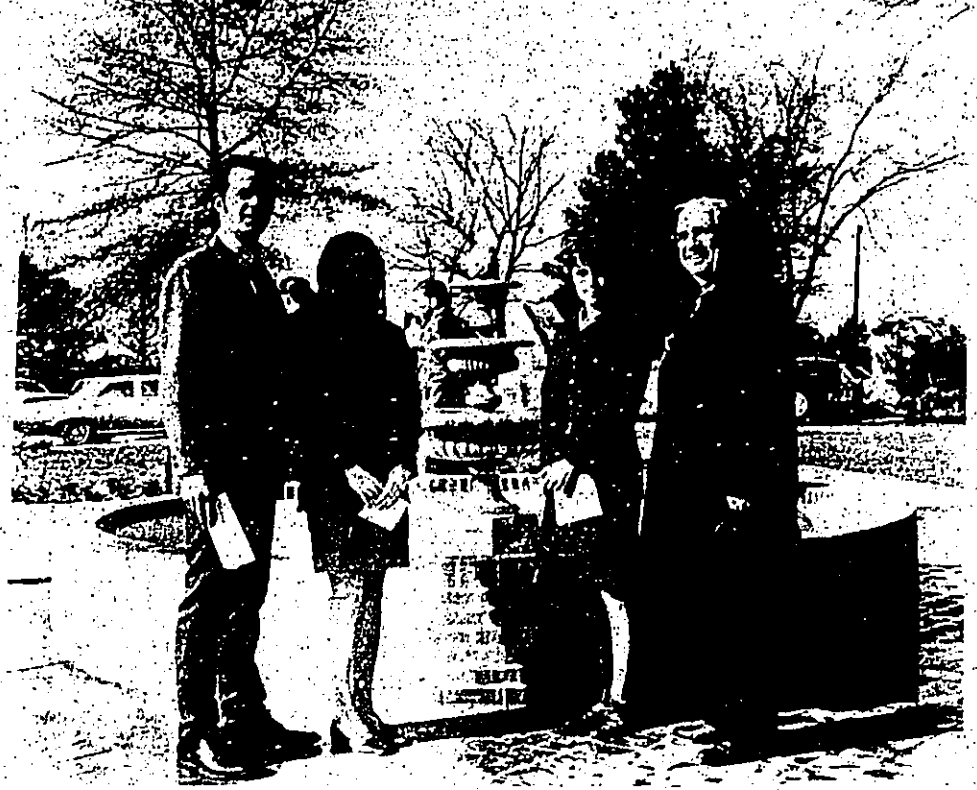
Published every Thursday by the Tyler County Publishing Company, P. O. Box 248, Woodville, Texas 75979. Telephone 283-2484.

Entered as second class matter at the Post Office in Woodville, Texas December 11, 1960, under the Act of Congress, March 3, 1879. Second class postage paid at Woodville, Texas.

SUBSCRIPTION RATES:
In Tyler County, \$2.50 per year
Out of County, \$3.00 per year
Out of State, \$2.50 per year

MEMBER OF THE TEXAS PRESS ASSOCIATION
AFFILIATE MEMBER NATIONAL EDITORIAL ASSOCIATION

ETBC STUDENTS DEDICATE QUADRANGLE



ETBC students gathered around a quadrangle built with some \$10,000 donated by the local business community.

TYLER COUNTY BOOSTER

Business Women's Club Has Christmas Party Thursday

The Woodville Business and Professional Women's Club held their annual Christmas party in the civic room, Children State Bank, Thursday evening, with a covered dish supper.

December 26, 1968

Services Held For Mrs. Maud Stafford

Funeral services for Mrs. Maud Stafford, 89, of Woodville were held at 3 p.m. Thursday in Edwards Funeral Home.

December 26, 1968

TYLER COUNTY BOOSTER

Services Held For W. Irvin Foxworth

Funeral services for W. Irvin Foxworth, 73, of Woodville were held at 11 a.m. Thursday in Edwards Funeral Home.

December 26, 1968

TYLER COUNTY BOOSTER

USE CLASSIFIED ADS TO BUY, SELL, SWAP - RENT OR HIRE

Large advertisement for classified ads with a circular graphic and bold text.

TOO LATE TO CLASSIFY... DR. J. D. PARKMAN, chiropractor, is moving to Woodville...

Mrs. Joe Shillings Hostess To Euzejian Class December 17... The Christmas meeting of the Euzejian Class...

Sp4 Robert Hollis Is With U. S. Army Engineers, Dong Tam... Another 'high well done' mark for the U.S. Army Engineers...

WOODVILLE 71... BIG SANDY 38... EAGLE'S NEST... CORRIGAN 53... WOODVILLE 49... Campground News... SET Savings... Booster Bits...

GO TO THE CHURCH OF YOUR CHOICE SUNDAY... THIS INVITATION TO ATTEND THE CHURCH OF YOUR CHOICE IS SPONSORED BY THE FOLLOWING BUSINESSES...

HAPPY NEW YEAR... People who saw department AM Motors' Polly Archer making his way across busy Clinton Avenue, Southeast Texas...

Large advertisement for churches and businesses with a central image of a church and a list of sponsors.

Lodge Notes

Veterans of Foreign Wars Tyler County VFW Post No. 2033 meets every second Monday of each month at 7:30 p.m. at the VFW Hall in Woodville.

FOR SALE

FOR SALE: Fat hens, 50 cents each in lots of 10. Joe Beck, HA 9-3456, Spurter. 10c

REAL ESTATE

A Christmas Special: Large lot on Hill, trees, corner Cecil St. and Hwy. 190. Only \$2,750.

LEGAL NOTICE

NOTICE TO BIDDERS OF THE INTENTION OF THE CITY OF CHESTER, TEXAS TO LET CONTRACTS FOR CONSTRUCTING A NATURAL GAS SYSTEM.

Want Ad Rates

WANT ADS cost little and get big results. Minimum charge is \$1.00 or 5 cents per word.

REAL ESTATE

2 BR. frame home, 5.4 acre fertile farm land, \$2,800 equity and assume \$1,500 loan.

666 COLDS Take 666

HELP WANTED: Truck driver or helper for garbage truck. Call 283-2709.

PHILLIP'S REAL ESTATE

295 acre, 2 good streams, 70 acres in pasture. Good timber, \$210 per acre.

FOR RENT

FOR RENT: By day or hour, clean pool beds, 2-1/2" x 2-1/2" at Tyler County Hospital.

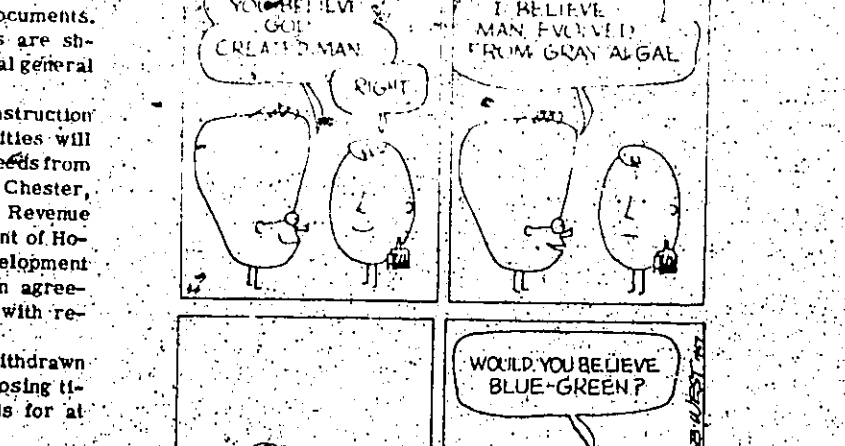
TYLER COUNTY BOOSTER BUSINESS & PROFESSIONAL DIRECTORY

Featuring: Victor-TV-Radio, Frigidaire, Whirlpool, Woodville.

REAL ESTATE

2 BR. home on 100x150 ft. lot, black top street near school. Very pretty and priced low.

THEOPHILUS



KVLL

Your Local Radio Station... Phone BU 3-3081 Woodville, Texas

TV SERVICEMAN

Outside Man capable of in-home service on Color TV, V. and Stereo. Starting salary \$650 - \$800 per month.

PELLY'S TV

309 S. Magnolia Woodville, Texas BU 3-2456

CHURCH OF CHRIST

604 Pine St. The best wishes we can find... to send your way for New Year's Day!

YARBOROUGH NEWSLETTER

By U. S. SENATOR RALPH YARBOROUGH

Congress to open January 3 to new challenges and old problems--A new Congress, a new president and a new year--that's the outlook as Mrs. Yarbrough and I prepare to return to Washington for the opening of the 91st Congress January 3. But many of the problems haven't changed, and so I look for the next year to be a big one. As I told the Senate in my final remarks during the last session:

We still need to continue to seek realistic, practical programs to meet the tremendous challenges of our Nation. The problems of housing, education, health care, and urban renewal are still with us. We must continue to seek solutions that will improve the lives of our people.

Education--During the closing days of the last Congress, I proposed a new Educational Technology Act. The bill is a beginning to provide the money, technical assistance, and information needed to improve our schools, and to promote innovation and improvement in our schools.

Health Care--I have introduced a bill to provide for a national health care program. This bill will provide for a national health care program that will provide for the health care needs of all Americans.

Urban Renewal--I have introduced a bill to provide for a national urban renewal program. This bill will provide for a national urban renewal program that will provide for the urban renewal needs of all Americans.

Environment--I have introduced a bill to provide for a national environmental protection program. This bill will provide for a national environmental protection program that will provide for the environmental protection needs of all Americans.

Foreign Aid--I have introduced a bill to provide for a national foreign aid program. This bill will provide for a national foreign aid program that will provide for the foreign aid needs of all Americans.

Peace--I have introduced a bill to provide for a national peace program. This bill will provide for a national peace program that will provide for the peace needs of all Americans.

convenes in January. Failure to participate in this vitally important agreement threatens to jeopardize its future effectiveness, for the signatories of the treaty--some 80 nations--look expectantly and hopefully to the United States for leadership in this matter.

My position of seniority and my years of experience on the Labor and Public Welfare Committee, the Post Office and Civil Service Committee, and the all-important Appropriations Committee continue to enable me to introduce and pursue needed legislation. I hope to continue to contribute not only to the bills that come before my committees, but to all significant legislation that comes before the Congress.

EDUCATION--During the closing days of the last Congress, I proposed a new Educational Technology Act. The bill is a beginning to provide the money, technical assistance, and information needed to improve our schools, and to promote innovation and improvement in our schools.

Health Care--I have introduced a bill to provide for a national health care program. This bill will provide for a national health care program that will provide for the health care needs of all Americans.

Urban Renewal--I have introduced a bill to provide for a national urban renewal program. This bill will provide for a national urban renewal program that will provide for the urban renewal needs of all Americans.

Environment--I have introduced a bill to provide for a national environmental protection program. This bill will provide for a national environmental protection program that will provide for the environmental protection needs of all Americans.

Foreign Aid--I have introduced a bill to provide for a national foreign aid program. This bill will provide for a national foreign aid program that will provide for the foreign aid needs of all Americans.

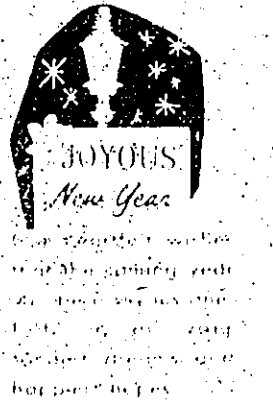
Peace--I have introduced a bill to provide for a national peace program. This bill will provide for a national peace program that will provide for the peace needs of all Americans.

working hard next year to see that money is made available for programs close to the heart of Texans. Bilingual education, for example, we authorized \$30 million for last year, but appropriated only \$7.5 million--and I had to fight for that. This year I'm pushing for the full \$45 million, which is the figure Congress agreed on when the bill was passed last year.

And there are other financial ends to be reckoned with for Texas projects. We still need to vote the funds to pay off land judgments for Padre Island National Seashore, although my original bill creating the seashore passed six years ago, and money to buy the land in Guadalupe Mountains National Park. New dams and flood control projects which we authorized last year--such as Millieau Dam near Bryan, Palmetto Bend in Jackson county, and Aquilla Dam and Reservoir in Hill County--look great on paper, but this year we need to obtain the money to start planning. I also hope we can obtain the money needed to build the long-awaited VA Hospital in San Antonio, and the Army Field Training Hospital at Brooke Army Medical Center in San Antonio.

A number of proposals have been offered by individuals in Congress during recent weeks to strengthen law enforcement and the training and staffing of police agencies. One aspect of crime protection which I hope Congress will consider is helping the innocent victims of crimes. Under our system of justice we make guarantee to the suspected criminal such as the right to a lawyer, a speedy trial, and various amenities for appeal and clemency. But what of the victim? Too often the person who is mugged or robbed suffers lingering physical injury, financial loss, and even emotional after-effects.

When I first introduced my bill to provide compensation to the victims of crimes, in 1965, it was a new idea. Some considered it too advanced. Since then, however, three states have passed similar state laws, and the American Bar Association has endorsed my bill. I plan to reintroduce it in the new Congress, and I am hopeful that Congress will look to the victims, as well as the felons, in seeking to deal with crime in America.



Our very best Wishes for a Peaceful and Happy New Year

The church with its bells ringing joyfully, the people gathering in happy family groups... scenes like these, we believe, most appropriately express the wishes and hopes of all, for lasting peace and contentment. Happy New Year!

Thank you for your many favors and friendly good will.

TYLER COUNTY BOOSTER

SPECIALS FRIDAY AND SATURDAY DEC. 27-28

WITH **HOG JOWLS** AND **BLACK EYED PEAS**

START the NEW YEAR RIGHT

WE GIVE QUALITY STAMPS

BIG STAR

DRY SALT HOG JOWLS LB. 15c	DRIED BLACK EYES 2 LB. PKG. 33c
---	--

100 FREE QUALITY STAMPS WITH THIS COUPON AND THE PURCHASE OF \$5.00 OR MORE	FRYERS	GRADE A CUT UP LB. 35c	29c
VOID AFTER DEC. 31	BABY BEEF SHOULDER STEAKS LB. 59c	BABY BEEF RIB CHOPS LB. 79c	RATH VAC PAC BOLOGNA, PGP OR OLIVE LUNCH MEAT 3 6-OZ. PKGS. 1.00
	SLICED AMERICAN CHEESE LB. 79c		

MAYONNAISE KRAFT QT. 59c	WHITFIELD SWEET GHERKINS 12-OZ. 45c	OCEAN SPRAY CRANBERRY JUICE QT. 59c
	OCEAN SPRAY CRANBERRY SAUCE 2 300 CANS 49c	LIBBY'S WITH OR WITHOUT SNAPS BLAKEYED PEAS 6 300 CANS 1.00
DRINKS	SHASTA ASSORTED FLAVORS 10 12-Oz. Cans 89c	
TOWIE STUFFED OLIVES 5-OZ. 45c	TOWIE MARSCHINO SALAD CHERRIES 9-OZ. 35c	DUZ GIANT SIZE 83c
LIBBY'S TOMATO JUICE 3 46-OZ. CANS 1.00	RANCH STYLE BLACK EYES 2 300 CANS 27c	OXYDOL GIANT SIZE 83c
COFFEE SEAPORT LB. 59c	ROTEL GREEN CHILIS AND TOMATOES 2 NO. 1 CANS 35c	IVORY SNOW GIANT SIZE 83c
	HORMEL DEVILED SPAM 2 3-OZ. CANS 45c	LIBBY'S FROZEN ORANGE JUICE 3 6-OZ. CANS 69c
SPRITE 6 PAK PLUS DEPOSIT 29c	LIPTON'S ONION SOUP PKG. OF 2 35c	ORE-IDA CRINKLE POTATOES 2 LB. PKG. 45c
PLANTERS COCKTAIL PEANUTS 13 1/2-OZ. CAN 69c	LIBBY'S VIENNAS 2 4-OZ. CANS 45c	SEATANG PEELLED SHRIMP 1 1/2 LB. PKG. 2.49
KRAFTS ONION DIP 8-OZ. 49c	MCORMICK MIXED NUTS 13-OZ. CAN 59c	TENO ASSORTED PIZZA ROLLS 6'S--ONLY 59c
BEAN DIP FRITO 10-OZ. CAN 25c	FRITOS ONLY 39c	LIBBY'S BLACK EYE PEAS 24-OZ. POLY BAG 49c
WHIPPED PARKAY LB. PKG. 43c	EGG NOG QUART 59c	
KRAFT CHEESE FOOD VELVEETA 2 LBS. 99c	SUNSHINE OATMEAL COOKIES 12-OZ. PKG. 33c	
POTATOES 12 211 CANS ALMA SHOE STRING \$1.00		

ALKA SELTZER 8 TABLETS SIZE 29c	PEPTO BISMOL 4-OZ. SIZE 49c
CELERY FRESH CRISP STALK 15c	
CALAVO AVOCADOS EACH 15c	FRESH GREEN ONIONS BUN. 10c
BELL PEPPERS EACH 5c	U.S. NO. 1 KILN DRIED YAMS 2 LBS. 29c
CALIFORNIA SUNKIST NAVEL ORANGES LB. 19c	