

FOOTBALL CONTEST

SEE DETAILS: PAGE 7



THE TYLER COUNTY BOOSTER

Volume 15, Number 10

WOODVILLE, TEXAS

15c

Top Of The Morning

Warren ISD Lowers 1974-75 Tax Rates

The Board of Trustees of Warren Independent School District met Monday August 27th at 7:00 p.m. for a Regular Board Meeting. Although the 1974-75 budget expenditures have increased by \$67,000 over the 1973-74 budget, the Warren Independent School District Trustees lowered the tax rate for 1974-75 by 3.36%.

The Warren School Board approved the 1974-75 budget of \$1,703,307.00 for operation, \$1,000,000.00 for debt service bonds, making the total budget \$2,703,307.00. This is an increase of \$67,000 over last year.



MRS. BELINDA COVINGTON

Mrs. Belinda Covington, county extension agent, is pictured in her office. She is currently working in Cherokee County as a resident county extension agent.

Wheat Named Chairman CONTINUED STUDY OF ENVIRONMENTAL LAW

Joseph Wheat, Woodville, Texas, has been appointed chairman of the advisory committee to the American Bar Association's Special Committee on Environmental Law. The appointment was made last week by ABA President James S. Liebman.

Wheat made the national environmental law study as a part of his continuing commitment to environmental protection. He is chairman of the State Bar of Texas' Special Committee on Environmental Law.

\$25 PERMIT LIMITED HUNTING AVAILABLE FOR COUNTY GAME MANAGEMENT AREA

The newest game management area in Tyler County, Texas, is a 330-acre tract of excellent deer habitat located in the Woodville area. The area is managed and protected to provide quality hunting and a reasonable and profitable investment.

MH-MR APPROVES SUBMITTED PLAN FOR STATE AID

The Board of Trustees of the Texas Department of Mental Health and Mental Retardation at its meeting held in Austin on Friday, August 23, 1974, approved the Comprehensive Plan submitted by the Dept. of Texas Regional Mental Health Services.



GOLF TOURNAMENT WINNERS: The Women's Pine Hills golf championship was held Saturday, August 31. Play was shortened to 18 holes due to bad weather conditions.

CHAMBER MEETS SEPTEMBER 9 AT WOODVILLE INN

The Tyler County Chamber of Commerce will meet Monday, September 9, at noon, at the Woodville Inn. The meeting will be held in the dining room.

STUDENT TICKETS NOT SOLD AT THE VARSITY GAMES

In the Tyler County Administration Building, the following admission prices shall prevail: Student - \$2.00, General Admission - \$1.00, Reserved - \$1.75.

TRAIN CARRIES CAR DOWN TRACK ONE-HALF MILE

The car was derailed but the driver was able to walk away from a train-car accident that occurred 7:40 a.m. Tuesday, September 3, two miles north of Colmes, and on FM 285. The driver of the car ran into the path of a southbound 98-car Southern Pacific train.

MOONEY HONORED WITH RETIREMENT RECEPTION



PAUL WELLS, DAISY BOE, MAUREEN MOONEY: Approximately 40 persons attended the retirement reception for Mrs. Maureen Mooney, August 20, by the County Extension Board.

Approximately 40 persons attended the retirement reception for Mrs. Maureen Mooney, August 20, by the County Extension Board. Mrs. Mooney has been a county extension agent for many years.

HORSE SHOW SET SEPTEMBER 7 BY 4H AND FFA

The Tyler County 4H and FFA will sponsor an open horse show Saturday, September 7, at the 4H and FFA arena. There will be three divisions with six place trophies in each.

Colmesneil News

A group of leaders of the Colmesneil community... Colmesneil News... The Colmesneil community... Many of the Colmesneil leaders...

"Miss Goodall And The Wild Chimpanzees"

When attractive young actress Miss Goodall... The Wild Chimpanzees... Her performance in the play...

TEXAS PRESS ASSOCIATION MEMBER 1974 TYLER COUNTY BOOSTER... HERITAGE CIVIC CLUB NEWS... The Heritage Civic Club...

GASSIOTT'S 20TH ANNIVERSARY SALE

TOYS: LITTLE GIRLS BATONS \$1.50... FOOTBALL & KICKING T... TRUCK & HORSE VAN... LADIES DEPT. Panty Hose... DISHES: President & Texas Plates... Muffin Pan... HIBACHI COOKER... CROCK POT COOKER... MEN'S & BOY'S DEPT. House Shoes... Tennis Shoes... Athletic Socks... Boxer Shorts... UNDER SHIRTS... PILLOWS... POLISHING CLOTHES... THROW RUGS... RUBBER FURNITURE TIPS... BATH SET... BATH MATS... POT HOLDERS... FABRICS: Blendaire Sheer... Dotted Swiss... Sport White... Odds & Ends... Flannel...

DR. ROY B. BLIZZARD JR. PUBLIC LECTURES AT WOODVILLE INN THIS FRIDAY, SATURDAY and SUNDAY... FRIDAY 6:10 A.M. - 7:30 P.M. SATURDAY 7:10 A.M. - 7:30 P.M. SUNDAY 8:10 A.M. - 10 A.M. SUNDAY PREACHING AT WOODVILLE PRAYER GROUP...

GE \$6,000,000 AUTUMN VALUE SWEEPSTAKES... WIN A NEW AUTO... G.E. 14.2 cu. ft. NO-FROST REFRIGERATOR FREEZER WITH 4.58 cu. ft. FREEZER... \$318... 2-SPEED, 4-CYCLE FILTER-FLO WASHER... \$248.00... Feature-Packed POTSCRUBBER DISHWASHER... \$278.00... BIG-SCREEN PORTABLE... \$148... SCULPTURE 12" DIAGONAL BLACK & WHITE TELEVISION... \$98... SULLIVAN'S HARDWARE 203-2231

First State Bank... Colmesneil, Texas... It's the way you bank that counts... First State Bank... Colmesneil, Texas

SPORTS

Chester and Corrigan Tie 0-0 in scrimmage

The Woodville Eagles play their home game Friday night against the Corrigan Yellowjackets. The game was a tie, 0-0, in the first half. The game was a tie, 0-0, in the first half.

WOODVILLE OPENS '74 GRID SEASON AGAINST CORRIGAN FRIDAY NIGHT

The Woodville Eagles play their home game Friday night against the Corrigan Yellowjackets. The game was a tie, 0-0, in the first half. The game was a tie, 0-0, in the first half.

The Woodville Eagles play their home game Friday night against the Corrigan Yellowjackets. The game was a tie, 0-0, in the first half. The game was a tie, 0-0, in the first half.



Early football kick through (24) grade a pass thrown by (17) player in (17) yard line.

BUY WITH CONFIDENCE FROM THE GOOD GUYS

1974 DODGE COLT
2777

1974 DART SPORT COUPE
6-Cylinder With Air And Power

RAYBURN COUNTRY
Chrysler - Dodge
384-5403 JASPER, TEXAS
KIBBYVILLE, HWY SOUTH



WARREN, COLMESNEIL BATTLE FRIDAY NITE

The Warren Bulldogs play their home game Friday night against the Colmesneil Bulldogs. The game was a tie, 0-0, in the first half. The game was a tie, 0-0, in the first half.

NEW! HIGHER!

INTEREST RATES for your saving.

5.25%	PASS-BOOK ACCOUNTS
5.75%	\$1,000 OR MORE 6 MONTHS CERTIFICATES
6.50%	\$5,000 OR MORE 1 OR 2 YEAR CERTIFICATES
6.75%	\$5,000 OR MORE 30 MONTHS CERTIFICATES
7.50%	\$5,000 OR MORE 48 MONTH CERTIFICATES

Highest Dividends Permitted By Law

Member of Federal Savings & Loan Insurance Corp., Federal Home Loan Bank System, United States Savings & Loan Association, Texas Savings & Loan League, Incorporated, by Texas State Savings & Loan Department, Federal Home Loan Bank Board.

8:00 PM Thursday September 5 Channel 6 REDEM-TV Woodville

THE AWARD WINNING NATIONAL GEOGRAPHIC TV SPECIAL "Miss Goodall and the Wild Chimpanzees"

Presented in the public interest by

Eastex
INCORPORATED
The Paper Mill at Cynola

This Week's Games

VARSELY GAMES
WOODVILLE VS CORRIGAN 7:00 PM
WARREN VS COLMESNEIL 7:00 PM

JUNIOR VARSITY
WOODVILLE VS CORRIGAN 7:00 PM
WARREN VS COLMESNEIL 7:00 PM

BIG GRADE
WOODVILLE VS CORRIGAN 7:00 PM
WARREN VS COLMESNEIL 7:00 PM

JUNIOR HIGH
WOODVILLE VS CORRIGAN 7:00 PM
WARREN VS COLMESNEIL 7:00 PM

TYLER COUNTY BOOSTER FOOTBALL CONTEST

JO-BE EQUIPMENT
Sales-Service Parts-Rentals

FARM TRACTORS - TILLERS
TRACTOR ATTACHMENTS
LAWN & GARDEN TRACTORS
FARM MACHINERY PARTS

INDUSTRIAL & CONSTRUCTION MACHINERY

BACKHOE LOADERS
DOZERS
WHEEL LOADERS

1005 E. BLUFF WOODVILLE, TEXAS 75796

\$20 TO BE GIVEN AWAY EACH WEEK

RULES

1. All entries must be received by the deadline.

2. Entries must be made in the form of a check payable to the sponsor.

3. Entries must be received by the deadline.

4. Entries must be made in the form of a check payable to the sponsor.

5. Entries must be received by the deadline.

6. Entries must be made in the form of a check payable to the sponsor.

7. Entries must be received by the deadline.

8. Entries must be made in the form of a check payable to the sponsor.

9. Entries must be received by the deadline.

10. Entries must be made in the form of a check payable to the sponsor.

TUNE UP FOR FALL

Now that Fall weather is near your car will need a tune-up to give maximum performance.

Our expert mechanics are trained to spot your car's needs and make the necessary repairs.

Our business comes from repeat customers. Try us, you'll be pleased you did.

You get more for your money at.....

OGDEN CHEVROLET
837-2244 COLMESNEIL

There's More Hot Weather Ahead

BEAT THE HEAT WITH CARRIER

AIR CONDITIONING
GIVE US A CALL FOR SALES OR SERVICE!

Air Conditioning & Heating
Commercial Refrigeration
General Sheet Metal Work
Insulation Installed

WATTS CO
HEATING & AIR CONDITIONING
109 E. BLUFF
283-3696 Woodville

ENTRY BLANK

Name: _____

Tel. No. _____

Address _____

PICK THE WINNERS

COLMESNEIL WARRIN
WOODVILLE CORRIGAN
LIVINGSTON CROCKETT
HOUSTON MEMPHIS
TEXAS SOUTHMEN

TIE BREAKER - Predict Score

DALLAS PITTSBURG

Bob's Prescription Shop
1010 W. BLUFF WOODVILLE PH 283-2073

LAST MINUTE HUNTING NEEDS

Even the best hunters forget items when packing for the hunting trip.

Come to WESTERN AUTO and you'll no doubt find what you need.

WESTERN AUTO
283-2134 WOODVILLE

Prescriptions

ARE ALWAYS FILLED PROMPTLY HERE

There's no unnecessary waiting here for your prescriptions. We make it our business to take care of your health needs first. And you can count on our using only the best products!

JARROTT'S PHARMACY
205 S. MAGNOLIA 283-2550

COLLINS Paint & Decorating

- Jonas-Blair Paints
- Napco Paints
- Vinyl Wall Covering
- Painters Supplies
- Carpet
- Laminated Plastic Counter Tops
- Vinyl Floors
- Vinyl Tile

COLLINS PAINT & DECORATING
1107 S. Magnolia 283-2012

Serve the Best! Save the Most!

AT **DAVIS FOOD MARKET**
WARREN, TEXAS

WE'RE BACKING THE **WARREN WARRIORS**

And Good Luck To:
THE WOODVILLE EAGLES
THE CHESTER YELLOWJACKETS
THE COLMESNEIL BULLDOGS

Sears Sale!

Shallow and Deep Well Jet Pumps With or Without Captive Air Tanks

Multi-stage Jet Pumps \$20.00 OFF
Jet Pumps \$19.95 OFF

Use Sears Easy Payment Plan

Sears
218 S. MAGNOLIA WOODVILLE
Owned and operated by DOROTHY METZLER

We have the finest FEED, SEED & FERTILIZER

- Anthrax Vaccine In Stock

Special of the week

Thurs - Fri, Sat. Only
Horse & Mule Feed Reg. \$7.50
with this ad \$7.25 per 100 lb.
Limit 300 lb. Per Cust.

FARMERS FEED & SUPPLY
209 E. BLUFF 283-2253

UNBEATABLE PRICE
HY-TOP
FLOUR
5-LB. BAG
69¢
PLUS 37¢ STAMPS

UNBEATABLE PRICE
DEL MONTE CUT GREEN
BEANS
303 CANS
3 FOR **89¢**
PLUS 37¢ STAMPS

LOW, LOW PRICE!
STOKLEY VAN CAMP
PORK &
BEANS
303 CANS
3 FOR **87¢**
PLUS 37¢ STAMPS

LOW, LOW PRICE!
ANTISEPTIC
LISTERINE
20-07-DYL
PLUS 37¢ STAMPS

Unbeatable frozen foods
PRICES GOOD SEPTEMBER 5-6-7, 1974.
BANQUET MEAT
PIES 4 \$1.00

Unbeatable meats
HUSH PUPPIES 45¢
FISH STICKS 65¢
HY-TOP MIXED
VEGETABLES 3 303 CANS 89¢
SPREAD 59¢
PARKAY 69¢
ROLLS 45¢
TABLETS \$1.09
CAKE MIXES 53¢
PEANUT BUTTER 89¢
CAT FOODS 5 \$1.00

LOW, LOW PRICE!
FOLGER'S
COFFEE
PLUS 37¢ STAMPS

Unbeatable meats
WILSON CERTIFIED SMOKED
PICNICS
LB. WHOLE **59¢**

ARMOUR STAR SLICED BACON
PLUS 37¢ STAMPS

DOWNY 85¢
COMET 29¢
US NO. 1 RUSSET
POTATOES 79¢
8-LB. BAG

WE ACCEPT USDA FOOD STAMPS!

ARMOUR STAR SLICED BACON
PLUS 37¢ STAMPS

THOMPSON SEEDLESS
GRAPES LB. **49¢**
ORANGES 19¢
CELERY 29¢
CABBAGE 10¢

RADISHES 10¢
APPLES 79¢
ONIONS 15¢

BORDEN'S BUTTERMILK GAL **79¢**
TEA BAGS 63¢
SPINACH 4 \$1.00
PRUNE JUICE 59¢
GREEN BEANS 3/89¢

LOW, LOW PRICE!
HY-TOP
SALT
28-OZ. BOX
11¢
PLUS 37¢ STAMPS

L&M FILTER CIGARETTES \$3.99
Brookshire Bros.
THE BEST FOR LESS

UNBEATABLE PRICE
PILLSBURY BUTTERMILK
BISCUITS
4 CANS 10 **59¢**
PLUS 37¢ STAMPS

THE TYLER COUNTY BOOSTER

CHILD CARE CENTER ENTERS SEVENTH YEAR OF SERVICE

"We are not baby-sitters," said Mrs. (Howard) Alford, director of the Tyler County Child Care Center, as she explained the philosophy of the center. "We are here to help parents who are unable to care for their children at home. We provide a safe, clean, and nutritious environment for the children while their parents are at work or unable to care for them at home."

The center, which was founded in 1967, has served over 10,000 children in its seven-year history. It is a non-profit organization that is supported by the community and the state of Texas. The center provides a variety of services, including day care, preschool, and after-school care. It also provides meals and snacks for the children.

The center is staffed by trained and experienced personnel. Mrs. Alford is the director, and she is assisted by several other staff members. The center is open from 7:30 a.m. to 5:30 p.m., Monday through Friday. It is located at 1000 West Bluff in Woodville, Texas.



YOUNGEST CHILD



SPENDING IN A CHAIR



WANTING TO BE A LITTLE



COORDINATION EXERCISE



WANTING TO BE A LITTLE

The center is a member of the National Child Care Association and the Texas Child Care Association. It is also a member of the Tyler County Chamber of Commerce. The center is a valuable resource for the community and is committed to providing the highest quality of care for the children.

GET FULL COVERAGE
See us for insurance to cover your home or business.
FEAGIN INSURANCE
JIMMY P. FEAGIN
Call 883-2242
212 W. HIND

EGLE BOOSTERS TO VIEW FILM OF CORRIGAN GAME
The Woodville Eagles will hold their 25th anniversary celebration on Thursday, September 10, at 8:00 p.m. at the Eagles Club. The program will feature a film of the Corrigan Game, which was played in 1949. The film is a historical record of the game and is a must-see for all Eagles fans. The program is free and open to the public.

GRAMMER'S GROCERY
THRIFTY ONE-STOP SHOPPING
THURS. - SAT. 9-6
SEPT. 5-6-7

Dairy Queen
This Week's Family Special at Everybody's Everything
TEXAS T TACOS 3/94¢
Call in your order
1308 WEST BLUFF PH. 283-2584

King's Rod & Reel
ON DAM #11
Guns, Ammunition, Fishing Supplies of All Kinds, Tackle, Bait, Lures, and more. Also, fishing boots, waders, and more. Open 5:00 p.m. to 8:00 p.m.

JOHN'S RANCH HOUSE
DELICIOUS NOON BUFFET
Including Drink & Dessert \$1.75
501 Magnolia 283-2651
MR. & MRS. FLOYD GAUTHIER OWNERS

MEATS
ARM ROAST 1 lb. \$1.09
SLICED SLAB BACON 1 lb. \$1.09
RUMP ROAST 1 lb. \$1.19
ZUMMO BOLOGNA 1 lb. 99¢
CHUCK ROAST 1 lb. 79¢
BACON ENDS 1 lb. 59¢
VEAL CUTLETS 1 lb. \$2.19
CLUB STEAK 1 lb. \$1.29
ROUND STEAK 1 lb. \$1.39
CHUCK STEAK 1 lb. 89¢
STEW MEAT 1 lb. 79¢
ZUMMO HOT LINKS 1 lb. 79¢
GROUND MEAT 3 lbs. or more 1 lb. 99¢

CLASSIFIED

For sale

SPEND OURN... For sale... 1974 Ford... 1973 Chevrolet...

FOR SALE

FOR SALE... 1974 Ford... 1973 Chevrolet...

HELP WANTED

HELP WANTED... Seeking... 1974 Ford...

SERVICES

SERVICES... Classified advertising rates...

REAL ESTATE

REAL ESTATE... 1000 sq ft... 1500 sq ft...

REAL ESTATE

REAL ESTATE... 1000 sq ft... 1500 sq ft... 2000 sq ft...

J R COATS REAL ESTATE... 201 N. Main St... 283-5378

REAL ESTATE AT LAKE IVANHOE... 1000 sq ft... 1500 sq ft...

TYCO FEED CO... 201 2106... WOODVILLE, TEXAS

Garage Sales... ATTENTION RANCHERS... UPDATE ON LIVING...

Woodville Realty Co... GAIL BETTY WEEKS, 283-3110

PERMANENT EMPLOYMENT... Applicants will be interviewed at the Texas Foundries, Inc...

TEXAS FOUNDRIES, INC... 1011 North Howell... Lufkin, Texas

REAL ESTATE

REAL ESTATE... 1000 sq ft... 1500 sq ft... 2000 sq ft...

REAL ESTATE... 1000 sq ft... 1500 sq ft...

REAL ESTATE... 1000 sq ft... 1500 sq ft...

REAL ESTATE... 1000 sq ft... 1500 sq ft...

EAST TEXAS LAND COMPANY... 40 S. Magnolia... PH: 283-5252

REAL ESTATE... 1000 sq ft... 1500 sq ft...

REAL ESTATE... 1000 sq ft... 1500 sq ft...

Dolly Shirook Real Estate... 148 S. MAGNOLIA... WOODVILLE, TEXAS 75776

REAL ESTATE

REAL ESTATE... 1000 sq ft... 1500 sq ft... 2000 sq ft...

REAL ESTATE... 1000 sq ft... 1500 sq ft...

REAL ESTATE... 1000 sq ft... 1500 sq ft...

REAL ESTATE... 1000 sq ft... 1500 sq ft...

REAL ESTATE... 1000 sq ft... 1500 sq ft...

REAL ESTATE... 1000 sq ft... 1500 sq ft...

REAL ESTATE... 1000 sq ft... 1500 sq ft...

REAL ESTATE... 1000 sq ft... 1500 sq ft...

STATE CAPITAL Highlights and Sidelights... By Lynell Williams

STATE CAPITAL Highlights and Sidelights... Austin... State capital...

REAL ESTATE... 1000 sq ft... 1500 sq ft...

REAL ESTATE... 1000 sq ft... 1500 sq ft...

REAL ESTATE... 1000 sq ft... 1500 sq ft...

REAL ESTATE... 1000 sq ft... 1500 sq ft...

REAL ESTATE... 1000 sq ft... 1500 sq ft...

REAL ESTATE... 1000 sq ft... 1500 sq ft...

REAL ESTATE... 1000 sq ft... 1500 sq ft...

Participate in America's... VOTE... November 5

WANTED... 1974 Ford... 1973 Chevrolet...

WANTED... 1974 Ford... 1973 Chevrolet...

WANTED... 1974 Ford... 1973 Chevrolet...

WANTED... 1974 Ford... 1973 Chevrolet...

WANTED... 1974 Ford... 1973 Chevrolet...

WANTED... 1974 Ford... 1973 Chevrolet...

WANTED... 1974 Ford... 1973 Chevrolet...

WANTED... 1974 Ford... 1973 Chevrolet...

WANTED... 1974 Ford... 1973 Chevrolet...

WANTED... 1974 Ford... 1973 Chevrolet...

WANTED... 1974 Ford... 1973 Chevrolet...

WANTED... 1974 Ford... 1973 Chevrolet...

WANTED... 1974 Ford... 1973 Chevrolet...

WANTED... 1974 Ford... 1973 Chevrolet...

WANTED... 1974 Ford... 1973 Chevrolet...

WANTED... 1974 Ford... 1973 Chevrolet...

WANTED... 1974 Ford... 1973 Chevrolet...

WANTED... 1974 Ford... 1973 Chevrolet...

WANTED... 1974 Ford... 1973 Chevrolet...

WANTED... 1974 Ford... 1973 Chevrolet...

WANTED... 1974 Ford... 1973 Chevrolet...

WANTED... 1974 Ford... 1973 Chevrolet...

WANTED... 1974 Ford... 1973 Chevrolet...

WANTED... 1974 Ford... 1973 Chevrolet...

WANTED... 1974 Ford... 1973 Chevrolet...

WANTED... 1974 Ford... 1973 Chevrolet...

WANTED... 1974 Ford... 1973 Chevrolet...

WANTED... 1974 Ford... 1973 Chevrolet...

WANTED... 1974 Ford... 1973 Chevrolet...

WANTED... 1974 Ford... 1973 Chevrolet...

WANTED... 1974 Ford... 1973 Chevrolet...

WANTED... 1974 Ford... 1973 Chevrolet...

WANTED... 1974 Ford... 1973 Chevrolet...

WANTED... 1974 Ford... 1973 Chevrolet...

WANTED... 1974 Ford... 1973 Chevrolet...

WANTED... 1974 Ford... 1973 Chevrolet...

WANTED... 1974 Ford... 1973 Chevrolet...

WANTED... 1974 Ford... 1973 Chevrolet...

WANTED... 1974 Ford... 1973 Chevrolet...

WANTED... 1974 Ford... 1973 Chevrolet...

WANTED... 1974 Ford... 1973 Chevrolet...

WANTED... 1974 Ford... 1973 Chevrolet...

WANTED... 1974 Ford... 1973 Chevrolet...

WANTED... 1974 Ford... 1973 Chevrolet...

WANTED... 1974 Ford... 1973 Chevrolet...

WANTED... 1974 Ford... 1973 Chevrolet...

WANTED... 1974 Ford... 1973 Chevrolet...

WANTED... 1974 Ford... 1973 Chevrolet...

WANTED... 1974 Ford... 1973 Chevrolet...

WANTED... 1974 Ford... 1973 Chevrolet...

WANTED... 1974 Ford... 1973 Chevrolet...

WANTED... 1974 Ford... 1973 Chevrolet...

WANTED... 1974 Ford... 1973 Chevrolet...

WANTED... 1974 Ford... 1973 Chevrolet...

WANTED... 1974 Ford... 1973 Chevrolet...

WANTED... 1974 Ford... 1973 Chevrolet...

WANTED... 1974 Ford... 1973 Chevrolet...

WANTED... 1974 Ford... 1973 Chevrolet...

WANTED... 1974 Ford... 1973 Chevrolet...

WANTED... 1974 Ford... 1973 Chevrolet...

WANTED... 1974 Ford... 1973 Chevrolet...

WANTED... 1974 Ford... 1973 Chevrolet...

WANTED... 1974 Ford... 1973 Chevrolet...

WANTED... 1974 Ford... 1973 Chevrolet...

WANTED... 1974 Ford... 1973 Chevrolet...

WANTED... 1974 Ford... 1973 Chevrolet...

WANTED... 1974 Ford... 1973 Chevrolet...

WANTED... 1974 Ford... 1973 Chevrolet...

WANTED... 1974 Ford... 1973 Chevrolet...

WANTED... 1974 Ford... 1973 Chevrolet...

WANTED... 1974 Ford... 1973 Chevrolet...

PRICES FOR
SEPT. 4-6-8
7-9-10, '74

QUANTITY RIGHTS
RESERVED

thrifty...



2516 MAGNOLIA
BEAUMONT, TEX.
505 N MARGARET
KIRBYVILLE, TEX.
HWY. 49 NORTH
WOODVILLE, TEX.
1215 HORRIDGE
VINTON, LA.
400 So. WASHINGTON
LIVINGSTON, TEX.

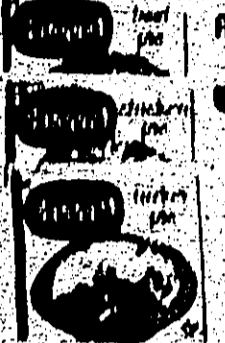
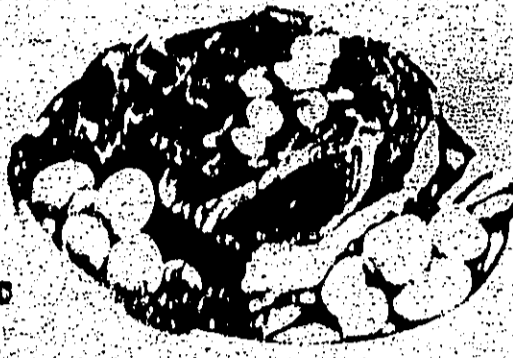
BEST BRAND @ BUYS

U.S. GOOD BEEF TURKEYS 10/16 LB. 69¢	U.S. GOOD BEEF RIB STEAKS 1 st 99¢	U.S. GOOD BEEF CAN HAMS 4 th 99¢
U.S. GOOD BEEF ROUND ROAST 69¢	U.S. GOOD BEEF CLUB STEAKS 1 st 99¢	ALL MEAT BOLOGNA BY THE POUND 79¢
U.S. GOOD BEEF CHUCK STEAK 89¢	U.S. GOOD BEEF HAM STEAKS 2 nd 99¢	SMOKED STEAK FRANKS 12.49¢
U.S. GOOD BEEF CHUCK ROAST 1 st 99¢	MARKET SLICED BOLOGNA 89¢	SLAM BLORED BACON 99¢

QUALITY STAMPS, MID-AMERICA'S NO. 1 TRADING STAMP!

U.S. GOOD BEEF 7-BONE CHUCK ROAST **79¢**

ROAST BACON LB. 89¢ U.S.D.A. GOOD BEEF CHUCK (BLADE CUT) lb. **69¢**



ROSDALE ORANGE JUICE 12 oz. **39¢**

POT PIES

BANQUET BEEF CHICKEN TURKEY **4** 8 OZ. PIES **\$1**

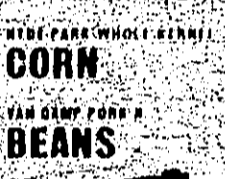
CLIP & SAVE COUPONS
100 FREE QUALITY STAMPS
With The Purchase of 4 WESTINGHOUSE LIGHT BULBS



HEAVY CREAM CREAMER 33¢



NEW PAPER FISH STICKS 1.09



SHARP AMERICAN CHEESE 89¢



NEW PAPER CORN 4/100



NEW PAPER BEANS 29¢



HUNGRY JACK BISCUITS 3 \$1.00



KRAFT GREEN DRESSING 2 89¢



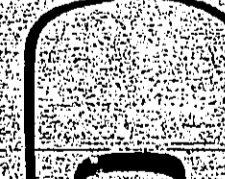
DOWNY FABRIC SOFTENER KING 1.29



PUNCH DETERGENT KING 1.19



TOOTH PASTE 69¢



NEW TEAL TOOTH PASTE 79¢



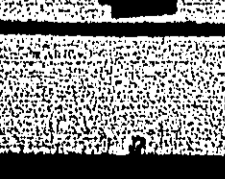
DELUX OCEANIC TOOTH BRUSH 49¢



WILKINSON TOOTH BRUSH 69¢



WILKINSON BONDED TOOTH BRUSH 79¢



WILKINSON BONDED TOOTH BRUSH 79¢

HEAVY KETCHUP 3/1.00

MIRACLE WHIP DRESSING 99¢

RED BEAN SANDWICH DILLS 39¢

DEL MONTE SWEET PEAS 3/1.00

DEL MONTE HASH 69¢

DEL MONTE MEAT 3/1.00

DEL MONTE SAUSAGE 59¢

SHERRILL'S SHERBERT 89¢

SHERRILL'S YOGURT 3/1.00

NEW PAPER CORN 4/1.00

NORMAL PLAIN OHILI 59¢

NORMAL OHILI 49¢

MRS. FILBERT'S LB. **49¢**

PILLSBURY ASST'S **3** FOR **\$1**

4 ROLL **59¢**

MARGARINE

MRS. FILBERT'S LB. **49¢**

CAKE MIXES

PILLSBURY ASST'S **3** FOR **\$1**

SAVE BIG!!! FOLGER'S COFFEE

with coupon lb. **99¢**

BISCUITS

3 10 ct. **\$1.00**

FLOUR

LIGHT CRUST 5 LB. BAG **89¢**

DRESSING

2 8 oz. **89¢**

SOFTENER

KING **1.29**

OVERNIGHT PAMPERS 99¢

HEAVY BELLERBAG CHEESE 59¢

CLIFF'S SPAGHETTI 3/1

LEWIS'S SPAGHETTI MIX 5/1.00

WOODRIDGE BEST OF SEASONS 39¢

ORANGE BOUTIQUE 89¢

GATTS PHILCAT LITTER 29¢

PILLSBURY ASST'S **3** FOR **\$1**

4 ROLL **59¢**

FIG NEWTONS lb. **69¢**

TEXUN GRAPEFRUIT 46 OZ. **39¢**

PRODUCE SAVINGS

LETUCE LARGE HEAD **29¢**

EA. **29¢**

EA. **29¢**

BETTY CROCKER HAMB. HELPER **2.10**

PILLSBURY ASST. LAYER CAKE MIXES **3** FOR **\$1.00**

FOLGER'S COFFEE lb. **99¢**

LIQUID TOP JOB **59¢**

LIQUID IVORY **59¢**

BATH SIZE LIFEBOUY **2** FOR **55¢**

HYDE PARK LABELS ARE VALUABLE TO established organizations such as religious, charitable, civic or fraternal groups. (Individuals are not eligible) Hyde Park labels are redeemable at 1/2¢ each by those groups. See your Big Star Store operator for details.

Compare Price
Compare Quality
You'll Buy Hyde Park!