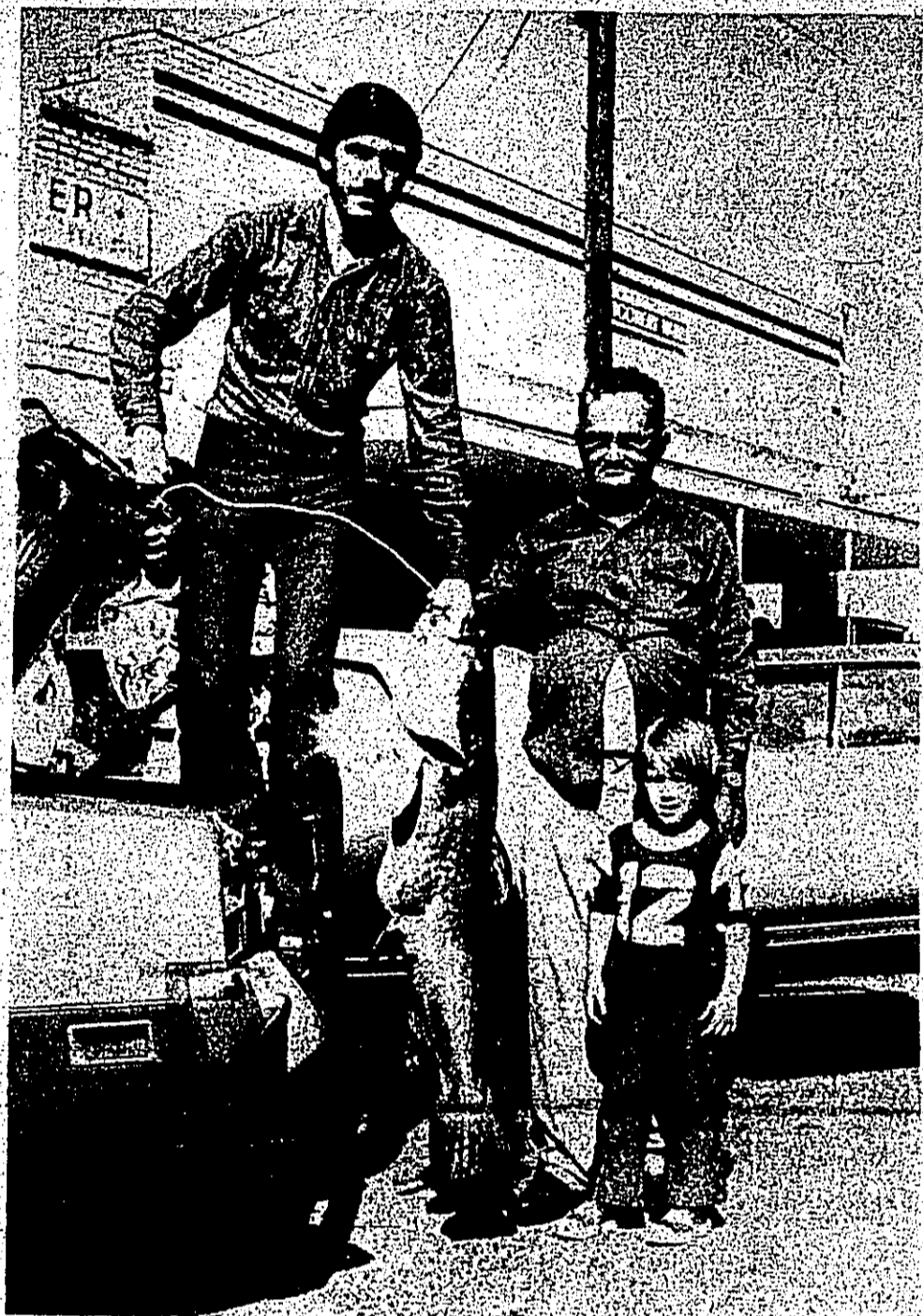


Follow Chester To State Playoffs On Nov. 21 (See Story Page 6)

The Tyler County BOOSTER

Serving Tyler County Since 1930

VOLUME 48 NUMBER 10 WOODVILLE, TEXAS NOVEMBER 13, 1975



Dam-B Catch

WHOLE OF A TALE--Ronald Hensarling of Lumberton (formerly of Woodville) brought the 44-pound Opokissa catfish shown above to the BOOSTER office Saturday, saying he caught it at Dam-B with a one-inch slud. According to Hensarling, "It didn't take 10 minutes...I gave 2-foot of slack and on the first cast he broke my rod and took my whole insides with him." Shown with Hensarling are his four-year son Ronnie and his father John Hensarling.

Shelter Survey Set

The U.S. Army Corps of Engineers is participating in a nationwide shelter survey being made by the Defense Civil Preparedness Agency. Tyler County is one of the areas selected to be surveyed during an undetermined period beginning in mid-November, 1975.

The survey teams will consist of specially trained engineers from their headquarters in Denton, Texas. The survey is being conducted to determine the extent of fallout shelter availability in the county and the capacity of the county to accommodate a limited influx of residents from near-by metropolitan areas in event of nuclear attack on probable targets. This information will give local civil preparedness directors specific guidance on where shelters are needed to best protect area residents from the effects of wartime disasters and the measures to be taken to host evacuees from centers of population located near-by.

Car Wash Is Friday

The Kirby High Chapter Future Homemakers of America is sponsoring a car wash Friday, Nov. 14. Cars will be taken in front of the band hall, or you may call 283-2225 and a licensed driver only will pick up and deliver the cars.

Bake Sale Set

WOODVILLE--The Young Homemakers of Texas are having a Thanksgiving Bake Sale Wednesday, November 26, in front of the Brookshire Bros. Store. The sale will feature homemade cakes, cookies, pies and cup cakes. The bake sale will begin at 8 a.m. and will be open until all items are sold.

Retirees To Host Lions

The retirees of Tyler County are asked to meet in the Lions' Den Tuesday, Nov. 18 at 9:30 a.m. in preparation for a Turkey dinner given in appreciation for the Lions' for

able in the county and the capacity of the county to accommodate a limited influx of residents from near-by metropolitan areas in event of nuclear attack on probable targets. This information will give local civil preparedness directors specific guidance on where shelters are needed to best protect area residents from the effects of wartime disasters and the measures to be taken to host evacuees from centers of population located near-by.

Time is from 8 a.m. to 5 p.m. Orders will not be taken after 4 p.m. The cost will be \$2.50 for a wash, and \$3 wash and vacuum. Sponsors are Mrs. Marion Tidwell, Mrs. Mayme Canada, and Mrs. Linda Jones.

YHT will take special orders. Place your request by calling Sue Shaw 283-5168 or Cindy McClure 283-5787. Special orders must be picked up no later than 11 a.m. or they will be sold.

We extend a cordial invitation to the Lions and also all the retirees of Tyler County to the use of their den for the retirees monthly meetings.

Development Group Meets This Friday

"The Deep East Texas Development Association Executive Board will meet Friday, Nov. 14, at Heritage Gardens," said Charlotte Griffith, executive secretary.

The executive board, executive committee chairman and past president have been invited to this special board

meeting to finalize details for the Annual Meeting.

DETDA's Annual Meeting will be held Jan. 16 in Nacogdoches, Attorney General John Hill will be the guest speaker for this yearly event.

The board will hear reports from various committee chairmen concerning future

committee projects.

Dr. Laurence C. Walker, DETDA president will preside over the meeting, Walker is Dean of the School of Forestry at Stephen F. Austin State University. DETDA is an eight-county organization concerned with the orderly use of resources in the area.

EPA Regs May Stall Ag-Industry

Certain new agricultural and industrial operations may be required to submit lengthy environmental assessment reports to the Environmental Protection Agency (EPA) nine months prior to construction if proposed regulations are put into effect.

According to Dr. John Sweeten, agricultural engineer in waste management for the Texas Agricultural Extension Service, the proposed EPA regulations would subject new feedlots and certain other agricultural "point sources" to the Environmental Impact Statement (EIS) Program established under the National Environmental Policy Act of 1969.

Agricultural related industries classified as point sources include major irrigation projects, fish farms, meat packing and fertilizer plants, grain mills and dairy, seafood, fruit and vegetable processing plants.

The EIS Program, which has been applied mainly to federally sponsored projects such as dams, airports and interstate highways, would require new feedlots and other operations to go through a 14-step procedure before their application for a water pollution abatement permit would be considered by the EPA.

"Anyone who wanted a permit for a proposed feedlot would have to fill out an environmental questionnaire at least nine months before starting construction and return it to the EPA," says Sweeten.

"Then, he'd have to submit a comprehensive environmental assessment report, which would be reviewed by the EPA. If EPA determines that the operation could have a significant impact on the human environment, the agency would draw up an Environmental Impact Statement and advertise for and receive public comments concerning the proposed project. When major concerns of the public have been overcome, EPA would begin processing the permit."

"In many cases the Environmental Impact Statement procedure has proved to be a long, costly process, even for large corporations and major federal projects," says the Texas A&M University System engineer.

"Expansion of this public decision-making process" to all new "point sources" will have a definite effect on expansion plans within the affected industries."

Comments on the proposed regulations are invited by EPA. Such comments should be sent to the Office of Federal Activities, U.S. Environmental Protection Agency, Washington D.C. 20460, no later than November 24.

Big Thicket's Peacock Appointed Manager

Howard Peacock of Houston and Woodville, president of the Big Thicket Association, has been appointed firm manager by the Houston law firm of Kronzer, Abraham and Watkins.

Prior to the appointment, Peacock was administrator of the University of Houston College of Law. A native of Beaumont, he and his wife, Kitty, plan to move to Woodville in the upper region of the Big Thicket within the next year.

At that time he will commute to Houston for a Tuesday-through-Thursday weekly schedule with the law firm. The Association is a voluntary organization of approximately 1,000 members. It is the only organization working year-round to protect areas designated for the 83,550-acre Big Thicket National Preserve and to increase public appreciation for the natural wonders of the area.

The November meeting of the Young Homemakers of Texas will meet Monday, Nov. 17, at the Community Room of the Citizen's State Bank with interior decorating as the group program topic, spokeswoman said.

YHT starts at 7 p.m. and guests and anyone interested in joining are welcome.

Application deadline for persons interested in the position must be postmarked on or before December 1.

"The school has had a policy for 10 years or so," Die stated, "that a person retire at age 65. It's important that we get applications in as soon as possible so the board can make the right choice," he said.

The board is currently accepting nominations and application for the position and said that inquiries should be addressed to: Mr. R.H. Elliott, President, Board of Trustees, P.O. Box 68, Warren, Texas 77664.

The Warren School Board meets regularly on the third Tuesday of each month. The next scheduled meeting is set for Tuesday, Nov. 18.



Grover Die To Retire Warren District Seeking New Superintendent

The Warren Independent School District Board of Trustees is actively searching for a new superintendent to fill a vacancy which will be created next July when the present administrator, Grover V. Die, steps down at the mandatory retirement age of 65, a policy set by that board.

The announcement was made by R.H. Elliott, president of the Warren School Board. Die, who will turn 65 in April next year, indicated that his actual contract with the district didn't expire until July 1, 1976, which has been set by the board as the most effective contract date.

Colmesneil Hudgins To Act In Play

Joel Hudgins, a freshman theater student from Colmesneil, Texas, will portray the King of England in the University of Northern Colorado production of "The Shoemaker's Holiday."

"The Shoemaker's Holiday" written in 1599 by Thomas Dekker, is a warm comedy, combining romantic interest with social history in a realistic picture of Elizabethan London. Dealing with common rather than courtly characters, the play consists of three interrelated plots--ill-fated accounts of the tradesmen's lives during the era.

Performances are scheduled for 8 p.m. Nov. 12-15 in the UNC Carter Theater, room 301. For further information and ticket reservations call the Treasurer box office at 361-2200.

Hudgins

Application deadline for persons interested in the position must be postmarked on or before December 1.

"The school has had a policy for 10 years or so," Die stated, "that a person retire at age 65. It's important that we get applications in as soon as possible so the board can make the right choice," he said.

The board is currently accepting nominations and application for the position and said that inquiries should be addressed to: Mr. R.H. Elliott, President, Board of Trustees, P.O. Box 68, Warren, Texas 77664.

The Warren School Board meets regularly on the third Tuesday of each month. The next scheduled meeting is set for Tuesday, Nov. 18.

Got any news? Call the Booster's New Number 283-2569

'Ag Policy Now Political Issue'

"Agricultural policy is no longer an island to itself. Everybody is getting into the act and trying to dictate what agricultural producers should do because agriculture has become a tremendous political issue."

With that, Dr. Ronald Knutson got to the heart of the matter in discussing the politics of agriculture at an Agribusiness Seminar here October 29.

"One of the biggest issues in agriculture today is who is in control of agricultural policy," said Knutson, an economist in marketing and policy with the Texas Agricultural Extension Service. "Control by the agricultural establishment is slipping into the hands of consumer groups and labor organizations."

Knutson, former administrator of the Farmer Cooperative Service, USDA, cited three main reasons for the increasing interest in agriculture and food policy by the outside groups.

"First, food has become a key negotiating tool in a foreign policy designed to maintain world peace. In addition, food has become vital to maintaining the value of the dollar in international transactions. Third, U.S. consumers are becoming more concerned that an increasing proportion of their

income must go to food. The consumers' cries have caught the ear of organized labor, which in turn has provided the consumer movement with significant financial support. Consumer and labor activism will have a strong effect on future agricultural policies, to say the least," said Knutson.

As far as political issues with respect to farm programs, the economist outlined four. The first deal with government involvement in domestic farm programs.

"Our farm programs must have the flexibility to deal with the potential to overproduce. Furthermore, farm programs of the future will likely have to modify programs appear to be on their way out. With increased consumer activism, farmers will need to be realistic in terms of what they can get from an urban-oriented Congress in all commodity areas. A unified approach among producer groups interested in farm policy will be required if any action is to be realized on Capitol Hill."

Knutson indicated the use of food as a tool of international diplomacy as a second major policy issue in agriculture. "People like the Secretary of State are determining our international agricultural policy. This represents no panacea for the farmer."

The economist likewise sees little for the U.S. farmer in the recently negotiated long-term agreement with Russia. "The stabilizing effect can easily be overestimated. The agreement's upper limit on exports acts as an automatic trigger for restricted exports."

On the issue of food aid, the economist noted that about half of the Department of Agriculture budget went to food programs during the 1974-75 fiscal year. Secretary of Agriculture Earl Butts argues that these funds should be directed to programs that expand agricultural production, increase efficiency and improve quality. Yet many in Congress argue that food programs provide tools with which they can bargain for support of mainstream agricultural programs. For support from labor, farmers must concede to labor's demands for food stamps for strikers and minimum wage legislation. Yet farmers were unable to override President Ford's veto of the 1975 farm bill while consumers got an expanded food stamp program.

"Of course, consumers have no objection to farm programs as long as they don't increase farm prices," emphasized Knutson. "If inflation continues, however, farm pro-

grams may actually be a noose around the producer's neck. A final policy issue aired by the economist was the question of "Who will control U.S. agriculture." The battle lines have already been drawn in some states regarding corporate farming, noted Knutson, and there is increasing concern by family farmers, consumers, the Justice Department and Nader-type groups about the future structure of agriculture. For example, a bill currently in Congress would prohibit contracting and feeding of cattle by packers. Other proposals would effectively prohibit mergers among cooperatives.

Mini-Bus October Report

Riders Including Escorts	271
Bus Driver Hours	184
Gasoline	\$386.40
Mileage	2,214.3
Telephone Calls	169
Walk-Ins	18
Court House Welfare etc.	16
Medical Services	15
Doctor (15: Hospital)	23
Drug Store	50
Retail Outlet	189
Human Develop Center	65
Bank	22
Post Office	13
Utilities	9
Nursing Home	4
Barber Shop	2
Funeral Home	2
Indian Village	12
Volunteers	7
Volunteer Hour	60

of agriculture. For example, a bill currently in Congress would prohibit contracting and feeding of cattle by packers. Other proposals would effectively prohibit mergers among cooperatives.

The economist stressed that in the end, how these issues are resolved will depend on agriculture's role in agricultural policy formation. "The answer to the question of who controls U.S. agricultural policy is up for grabs."

TYLER COUNTY BOOSTER
PUBLISHER: JOHN F. MORRISON
BUSINESS MANAGER: GLENDA JOHNSON
EDITOR: ERNESTINE FAIRCLOTH

TYLER COUNTY BOOSTER
SUBSCRIPTION RATES:
WOODVILLE, TEXAS: \$4.00
OTHER TEXAS CITIES & LOUISIANA: \$5.00
OTHER STATES: \$6.00
OVERSEAS: \$8.00

SCHOOL LUNCH MENU

WOODVILLE SCHOOL LUNCH MENU:
MONDAY: Teacher Inservice
TUESDAY: Toasted cheese sandwiches, beanitos, weenies, tossed salad, chocolate pudding and milk.

WOODVILLE SCHOOL LUNCH MENU:
WEDNESDAY: Frito pie, beanitos, orange cake and milk.
THURSDAY: Fish w/catsup, buttered potatoes, green beans, jello, corn bread and milk.

'We're Going To Move' SALE
Nov 18 - 21
10:00 - 6:00
10% OFF ALL ITEMS
CREATIVE MILIEU
Arts & Crafts Supplies
203 W. Bluff 283-2008

WOODVILLES PINES THEATRE
OPEN 7 NIGHTS EVERY WEEK
THURS.-FRI.-SAT. NOV. 13-14-15
SATURDAY MATINEE AT 1 P.M.
Heaven help us all when THE DEVIL'S RAIN!
SUN.-MON.-TUE. NOV. 16-17-18
"Delightfully outrageous"
PHANTOM of the PARADISE
PAUL WILLIAMS DOES HIS THINGS IN "PHANTOM"
A CRAZY SAVAGE FILM.

Dairy Queen
This Week's Family Special at Everybody's Everything
NOV. 14-15-16
SPECIAL BELT BUSTER & FRIES
3 FOR 89¢
Call In Your Order
1308 W. BLUFF WOODVILLE PHONE 283-2584

Citizens State Bank
PRINT A WARNING FOR YOURSELF. OPEN A CHRISTMAS CLUB ACCOUNT NOW SO THAT YOU WON'T BE CAUGHT SHORT WHEN CHRISTMAS COMES
SANTA NIGHTS GIFT CERTIFICATE FREE [Sears] GIFT
SANTA NIGHTS GIFT CERTIFICATE FREE [Sears] GIFT

Petit Juror List Given
List of Petit Jurors released by Patricia Brown, District Clerk, for Criminal Week of Court beginning Tuesday, Nov. 18, at 10 a.m.

Temple Voices Opinion About Nov. 4 Vote
In addition to Rev. Temple's explanation of the proposed constitutional provision, DEPTA's Executive Director, Stephen C. Walker, president of the Association and dean of the School of Forestry at Stephen F. Austin State University, praised the group for its electing their officers and encouraged continuing full support of their efforts.

Sears...where America Shops for Gifts
See SANTA in person
6 p.m. to 9 p.m. NOVEMBER 18, 1975 TUESDAY - WEDNESDAY
A Photographer will be here to take kids pictures
SANTA NIGHTS GIFT CERTIFICATE FREE [Sears] GIFT

New Arrivals
Calvin Wade Wallis and Mrs. Charles W. Wallis
Mrs. and Mrs. Ernest C. Johnson of Livingston wish to announce the engagement and approaching marriage of their daughter, Susan Elaine to Thomas Lee Johnson, son of Mr. and Mrs. M.C. Johnson of Borger, Texas.

Wedding Vows Spoken
The marriage of Barbara Elaine Riley and Frank Erwin Walker was solemnized in the Chapel of the First Baptist Church in Woodville on Saturday, Nov. 16, at 7:00 p.m.

RUSTY'S HEATING & AIR CONDITIONING
RUSTY HUGHES
CENTRAL AIR & HEATING Sales & Service
YORK
105 E. Wheat St. 283-5132
Woodville, Texas 75779
969-2586 or 969-2419
P.O. Box 32 Chester, Texas 75936

Engagement Announced
Rev. and Mrs. Ernest C. Johnson of Livingston wish to announce the engagement and approaching marriage of their daughter, Susan Elaine to Thomas Lee Johnson, son of Mr. and Mrs. M.C. Johnson of Borger, Texas.

Six Receive Fair Awards
There were 6 Tyler County Fair's participants in the South Texas State Fair in Beaumont recently. Michelle Ritchie and Christine Hecker received blue ribbons and trophies for third place in the Junior Causal Division. Michelle is a member of the Woodville Junior 4-H Club and Christine is a member of the Colmesnell Community 4-H Club.

Suryker Gets Scholarship
AUSTIN, James Lee Suryker of Rt. 1, Box 2A, Woodville recently was presented an Alumni Scholarship by the Tyler County Texas Exes Club and The University of Texas Extension Association.

Build For The Future AT Southeast Texas Savings & Loan Association
5 PLANS TO FIT YOUR NEEDS FOR THE FUTURE. SAVINGS IN BY 10th EARN FROM THE FIRST
7 1/2% 4 YEAR SAVINGS CERTIFICATE (\$10,000 MIN.) COMPOUNDED QUARTERLY EARNS AN EFFECTIVE ANNUAL YIELD OF 7.79%*

J.B. WHITE COMPANY OF WOODVILLE
SAYS "Thanks for Making our GRAND OPENING Such A Tremendous Success"
Save \$84.90 Microwave Oven plus special Microwave Browning Dish and Roll-away Cart 299.95
Save \$70 Ceramic cooktop Kenmore Range with Continuous-cleaning oven W22JR2841N 329.95

UNBEATABLE PRICE
 GUSH FIELD PEAS
 300 CANS
51
 PLUS STAMPS

UNBEATABLE PRICE
 LADY SCOTT BATHROOM
 TISSUE
 2 ROLL PKG.
45
 PLUS STAMPS

UNBEATABLE PRICE
 HY-TOP REGULAR
 FOIL
 12" X 25" ROLL
33
 PLUS STAMPS

UNBEATABLE PRICE
 CONTADINA TOMATO
 SAUCE
 8 OZ. CANS
61
 PLUS STAMPS

UNBEATABLE PRICE
 CHIEFWAY VEGETABLE
 OIL
 48 OZ. BTL.
159
 PLUS STAMPS

UNBEATABLE PRICE
 LIPTON REGULAR
 TEA
 1/2 LB. BOX
127
 PLUS STAMPS

PRICES GOOD NOV. 12-13-14-15-17-18, 1975.

UNBEATABLE PRICE
 Brookshire Calf Round or Sirloin
 STEAK Family Pack
109
 PLUS STAMPS

BALLARD SWEETMILK
BISCUITS 4 CANS 10 **59**
 meat specials
 WILSON CERT-I-SELECT QUARTER SLICED PORK
LOINS LB. **109**

GOLD MEDAL FLOUR 5 LB. BAG **79**
 PRODUCE SPECIALS
 GOLDEN RIPE BANANAS LB. **17**

UNBEATABLE PRICE
 LITTLE FRISKIES CAN
 CAT FOOD
 15 OZ. CANS
51
 PLUS STAMPS

UNBEATABLE PRICE
 RATH MARKET SUCED
 BACON
139
 PLUS STAMPS

- WILSON CERT-I-SELECT CENTER CUT LOIN \$1.79
 WILSON CERT-I-SELECT RIB CUT \$1.69
 WILSON CERT-I-SELECT BOSTON BUTT \$1.49
 BROOKSHIRE CALF (FAMILY PACK) \$1.29
 T-BONE STEAKS \$1.29
 BROOKSHIRE SHOULDER
 ROAST LB. **79¢**
 KRECKS TEXAS MADE
 FRANKS 12 OZ. **75¢**
 RATH SMOKEY MAPLE BACON LB. **79¢**
 CARLTONS HOG HEAD CHEESE LB. **89¢**

- WILSON CERT-I-SELECT MED. SIZE SPARE RIBS \$1.29
 WILSON PIG TAILS, FEET & MAWS \$1.59
 WILSON HAM \$2.79
 PATTIES 20 OZ. \$2.79
 BROOKSHIRE BROS. CALF CHUCK ROAST LB. **59¢**
 Ruth Extra Lean Mid Roll SAUSAGE \$1.79
 Carltons Hog Head-Cue LINKS 1 1/2 LB. BAG **1.59**

- TEXAS RIPE RED GRAPEFRUIT LB. **15¢**
 FRESH TENDER GREEN ONIONS 2 FOR **29¢**
 LARGE CALIF SUNKIST ORANGES 8 FOR **\$1**

- WAXED RUTABAGA TURNIPS LB. **12¢**
 NEW CROP RAW PEANUTS 2 LB. BAG **99¢**
 FROZEN FOODS DINNERS EACH (except beef) **53¢**

UNBEATABLE PRICE
 PENTHOUSE PEACHES
 NO. 2-1/2
139
 PLUS STAMPS

- KRECKS PARTY PLEASURE BOLOGNA **89¢**
 RATH HICKORY SMOKED PORK CHOPS \$1.79
 ARMOUR ENDLESS LINK SMOKED SAUSAGE LB. \$1.57
 ASSTD. FLAVOR WEINER WRAPS 4 FOR **\$1**
 KRAFT SINGLE CHEESE 1 1/2 LB. PKG. **\$1.49**
 KRAFT HALF MOON CHEESE LB. **\$1.55**
 KRAFT GOOD A CHEESE 8 OZ. **\$1.19**
 KRECKS CHILI LB. **98¢**
 OSCAR MAYER HAM STEAKS 8 OZ. **\$1.89**
 OSCAR-MAYER TUBE BRAUNS, OR SANDWICH SPREAD 8 OZ. **65¢**

- OSCAR MAYER CHOPPED HAM ARMOUR 8 OZ. **\$1.39**
 MUENSCHNER LB. **\$1.19**
 ARMOUR CERVELAT LB. **\$1.99**
 TURBOT FISH FILLETS LB. **99¢**
 Ruth Bologna-Salami-Spiced & Beef BOLOGNA (10¢ Coupon) 6 OZ. **59¢**

- MORTONS DONUTS ALL FLAVORS PKG. **85¢**
 HY-TOP WAFFLES 2 PKG. 6 **43¢**

- OLE SOUTH PIE SHELLS PKG. 2 **39¢**
 GREEN GIANT CORN-ON-COB 4 EAR PKG. **83¢**

DEODORANT SOAP
 DIAL 2 BATH SIZE BARS **59¢**

- KRAFT CUPS WHIPPED
 BETTY CROCKER HAMBURGER HELPER (all varieties) PKG. **69¢**
 LIPTON REGULAR SOUP 2 ENV. PKG. **57¢**
 KRAFT 1000 ISLAND DRESSING 16 OZ. BTL. **79¢**
 KRAFT ITALIAN DRESSING 8 OZ. BTL. **49¢**
 KRAFT STRAWBERRY OR PEACH PRESERVES 8 OZ. **49¢**
 UNDERWOOD ROAD SPREAD 4 OZ. **49¢**
 PURINA PUPPY CHOW 25 LB. BAG **\$5.99**

PARKAY LB. **69¢**
 HEFTY TRASH CAN LINNERS PKG. 20 ECONOMY SIZE **\$1.59**
 ORCHARD ORANGE DRINK 64 OZ. BT. **69¢**
 SANITARY NAPKINS (reg. or super) PKG. 30 **\$1.79**
 ANTISEPTIC MOUTH WASH SCOPE 12 OZ. BTL. **99¢**
 SPRAY DEODORANT SURE (reg. or unscented) 9 OZ. CAN **\$1.49**
 IDENS PRO MILK 1/2 GALLON **81¢**
 FOLGERS FOLGERS COFFEE (limwt) W/17.50 PUR. **89**
 FOIL 12" X 25" **83¢**

UNBEATABLE PRICE
 FOLGERS COFFEE
89
 PLUS STAMPS

UNBEATABLE PRICE
 SNOWDRIFT SHORTENING
129
 PLUS STAMPS

- BREAST-O-CHICKEN CHUNK TUNA
 KEN-L RATION SPECIAL CUTS
 DOG FOOD 24 oz. pkg. **\$1.07**
 AUNT JEMIMA PANCAKE SYRUP 24 oz. BTL. **\$1.25**
 AUNT JEMIMA PANCAKE MIX 2 lb. box **75¢**
 BAKERS ANGEL FLAKE COCONUT 7 oz. can **67¢**
 LADY SCOTT FACIAL TISSUES BOX **49¢**
 SCOTT PAPERS TOWELS BIG ROLLS **53¢**
 CARNATION RICH HOT COCOA MIX 1/2 LB. **\$1.19**

55¢
 6 1/2 OZ. CAN

SHOP EARLY FOR CHRISTMAS AND USE OUR LAYAWAY PLAN.
 FIVE CROCK POT 15.88
 POLYESTER FIBER FILL 97¢

DETERGENT
 PUREX 42 OZ. SIZE **69¢**

ARROW PINTO BEANS 2 LB. BAG **59¢**

SAVE 10¢ WITH THIS COUPON WITH PURCHASE OF 6 OZ. PKG. BOLOGNA, SALAMI SPICED BEEF BOLOGNA
 GOOD AT: BROOKSHIRE BROS.
 COUPON EXPIRES NOV. 18, 1975

Brookshire Bros.
 THE BEST FOR LESS
 1201 NORTH GARDEN TOWER WOODVILLE, TEXAS

COUPON
 ORDER THIS COUPON FOR 50 FREE CAN GREEN STAMPS
 FROM BROOKSHIRE BROS. 4 OZ. OZ. 2000'S HAND LOTION COUPON EXPIRES NOV. 18, 1975
 BROOKSHIRE BROS.

COUPON
 ORDER THIS COUPON FOR 50 FREE 2 1/2 LB. GREEN STAMPS
 FROM BROOKSHIRE BROS. 4 OZ. OZ. 2000'S HAND LOTION COUPON EXPIRES NOV. 18, 1975
 BROOKSHIRE BROS.

COUPON
 ORDER THIS COUPON FOR 50 EXTRA 5 1/2 LB. GREEN STAMPS
 FROM BROOKSHIRE BROS. 4 OZ. OZ. 2000'S HAND LOTION COUPON EXPIRES NOV. 18, 1975
 BROOKSHIRE BROS.

'Watch Chester Win State'

JOHN'S RANCH HOUSE

NOW OPEN FOR BUSINESS

WEEKDAYS 5 A.M. TILL 9 P.M.
FRI.-SAT.-SUN.
5 A.M. TILL 10 P.M.
CLOSED MONDAY
COME EAT WITH US!

FEATURING: BREAKFASTS, SHORT ORDERS, SANDWICHES, MEXICAN FOOD, STEAKS, SEAFOOD, DAILY PLATE LUNCH.

ORDERS TO GO!!!!
So Come By THE ALL NEW

JOHN'S RANCH HOUSE
LOCATED ON S. MAGNOLIA
CALL 283-5273

Chester Wins State Playoff Berth

The Chester Yellowjackets clinched a November 28 playoff berth in the state championship by defeating the Evansville Rebels with a convincing score of 18-0.

The win Friday put the Chester squad in the same position as three years ago when they met New Waverly at Huntsville for a state level decision, but were handed a defeat of 16-8.

According to Head Football Coach Gary Gaaway the Chester Yellowjackets will play District II's Astell, which is located some 18 miles east of Waco.

The Astell team still has one game remaining against Normange. "And they lose," said Gaaway, "they'll still win their district."

Chester School Superintendent David Malone along with Coach Gaaway will meet "Sometime either Wednesday or Friday of this week" in the town of Centerville to decide where the game will be played. The Astell Superintendent is Jerry Whisker. Centerville is located approximately half way between the two cities. The Astell team is coached

Big Sandy Overtakes Spurger Girls

The Big Sandy Wildcats outlasted Spurger heavily in the fourth quarter Saturday night to take a hard earned victory from the Spurger Pirates 36 to 46.

After trailing 14 to 9 at the end of the first quarter, the Pirates outscored the Wildcats 12 to 0 and 12 to 11 in the second and third quarters for a 26 to 11 lead going into the first quarter.

The loss of Freshman guard Teresa Griffith on fumble early

Leggett Pirates Outlast Spurger

A fourth quarter comeback by the Spurger Pirates fell three points short Tuesday night as the Leggett Pirates held on for a 60-61 victory in Leggett Gym.

The Spurger defense was unable to stop the hot-headed Brown as she scored consistently from long range.

Over 4000 fans were in the gym for Spurger with 14 points. She was followed closely by Jackie McEliff with 12 and Tina Frelieu with 11. Brown was the only player scoring in double figures for Leggett.



Dogwood Golf Tournament

An 18 hole Florida Signature Golf Tournament was held at the Dogwood Country Club Sunday afternoon.

Nine teams competed for trophies and prizes. A total of 75 teams participated at a similar pro produced exciting playoff. First place winners were Ed Allison, Danny Newton, Noel Adams and Ben Griffin. Second place team members were Darryl Ward, Lorenz Grimes, Joe Edwards and Evelyn Wheat.

Other players in the playoff were Herb Smith, Joe Clark, Gilbert Wright and Faye Ward. Moose Oltun, Marshall Robertson, Joe Barry and Carolyn McGuire.

John Smiley co-host from the Nov. 11-12 hole was in a hole-out on his way back to the clubhouse. Julie Archer presented Jack Eaker with a booklet on how to play golf. She really had her hands full with Eaker and Branch both on her team. Poor Jallel Ridcy Watson gave out the spot pro - tournament lessons to Dottie Wheat and her team last night. Rickey was in a hole-out on No. 3 and No. 7 respectively.

Clubhouse staves about traffic drives and long puts rarely missed were heard everywhere.

Dodgers Take Second Place 2nd

After a busy softball season, the Dodgers took the Second Place Trophy by beating the Braves two out of three games in final play.

Pictured above are the Dodgers and the trophies they have won this season. From L. to R. (top) Albert Barkey, Cleo Smith Jr., Roney Bean, Frank Humphrey, John Merchison, Wescley Jones, Arthur Bean, Eddie Abrams, Donnie Cook, David Sells, U.C. Marshion, J.L. Barlow, Ralph Bean, Leroy Bean. Not pictured are: Leroy Barlow, Ray Sells, and publicity manager, Earlene Sells.

WE SELL SMOKERS, TOO!

No matter if its cigars or cigarettes, smokers are assured of professional handling of all their insurance needs at

Lewis H. Hudson FARMERS INSURANCE GROUP
215 KELLY BLVD. WOODVILLE, TEXAS
283-3724

YOU MAY QUALIFY FOR 18% RATE EVEN IF YOU DO SMOKE

Pirates Win Over Warriors

The Shepherd Pirates defeated the Warren Warriors 15-6 at Shepherd Friday night in their fifth district 25-A game.

The Pirates won the toss but decided to kick. That decision brought up the Warriors' first drive that started on the 25 yard line. Then to end the drive, Felton Cruise took a hand off from Gary Ellis to make the score 6-0. The extra point attempt made by Ellis passing to Sammy Gore was incomplete.

Neither team scored in the second quarter.

In the second half both teams came back strong. With some good blocking by Joseph Green and Lynn Bates the Pirates took the ball into the Warriors' half with the tough defense the Warriors came up with the ball.

Starting off the fourth quarter Bates punted for the Pirates from the 20 yard-line. The ball hit Warrior Jim Lundy on the chest and bounced off into the arms of Daniel Gardner who ran for the first touchdown for the Pirates. The extra point was kicked by George McClain to make the score 7-6 the Shepherd Pirates favor with 11-00 left in the game.

Pirates Bates punted again to Lundy and he just couldn't hold onto the ball and fumbled and Gardner for the Pirates recovered to set up the second touchdown for the Pirates. Green took a hand off from McClain for the second touchdown to make the score 13-6 the extra points were good to make the final score 15-6.

The game statistics are as follows:

WARREN	1st Down	29
Pirates	2 for 46 yards	14
First Downs	14	
Punts	3 for 43 average	
Fumbles		
Penalties	35 yards	
SHEPHERD	1st Down	117
Pirates	1 for 20 yards	8
First Downs		
Punts	3 for 25 average	
Fumbles	15 yards	

Next week Warren will play Hardin at Warren High School. Shepherd will play West Hildale at Shepherd for their homecoming. These games will end the 1975 football season for both teams.

Warren's overall record this season is 4 wins, 2 ties and 4 losses.



Woodville Action Friday Night

A Cleveland Indian halfback tries unsuccessfully to get around the left end but Eagle Keith Brown had other ideas. Shown also are Woodville Eagles' David Sterling, David Jones, C.J. and Jimmy Rutherford and David Mahan (on ground). The Eagles dropped their final game to Cleveland Friday night by a score of 25-14. (Photo Courtesy-Joe L. Cordeiro).

Kirby High Volleyball Team Tops

The Kirby High Girls' Volleyball team ended the 1975 season on Nov. 4 finishing fourth in the semi-finals of the 10-AAA West Zone Tournament.

Besides district contests, the team competed in three invitational tournaments during the season.

At Diboll, the Woodville girls won a first place trophy and placed three members on the All-Tournament team: Katie McQueen, Sheila Sharp, and Phyllis Spurlock.

In the Hudson Tournament, the Kirby High team captured another first place trophy, with Sheila Sharp again making the All-Tournament squad.

The Eagles also competed in the Macdoochos Tourney at Woodville. Denise Stanford and Sherri Collier set records for the team in the tournament. The team members are to be commended for their efforts during the season. Special recognition goes to Sheila Sharp who was named by zone coaches to the All-West Zone Volleyball Team.

Ends Perfect Season

The seventh and eighth grade football teams ended their playing season Thursday night with the seventh grade dropping their game to Cleveland to end the season with a 2-3 record. The eighth grade won their game ending their record with a whopping record of 9-1.

After the game the ball players and cheerleaders were honored with the seventh grade cookout at the Agriculture Building.

Among the many people assisting their time and food are the Mothers with long stamph and red carnations.

Woodville Loses To Cleveland

The Woodville Eagles lost their final game of the season to the Cleveland Indians by a score of 22-14.

The game ended in combination with some 1:30 left on the clock.

Disruption resulted when players disputed an unnecessary roughness call. Officials left the field with the short period remaining when the activity on the field caused a long break in the 9-A level sports schedule.

According to Woodville Head Coach Bobby Watkins, "I think we had a chance to win."

According to Watkins the first score for Woodville came in the second quarter when Billy Williams scored on a handoff from Boice Bear. Ralph Cordeiro followed with a 15 yard touchdown pass.

The extra point attempt was blocked by Cecil Brown. The Eagles were intercepted again and with 1:58 seconds left a Woodville defender sacked the Cleveland quarterback for a 25 yard loss which also drew a 15 yard roughness penalty resulting in an apparent flagging contest which caused the officials to leave the field prematurely.

NEW LUFKIN SAFEWAY OPENS SUNDAY, NOV. 16th

301 S. CHESTNUT LUFKIN, TEXAS

OPEN 'TIL MIDNIGHT 7 DAYS A WEEK!

© COPYRIGHT 1960 SAFEWAY STORES, INC.

SAFEWAY

Edwards To Start Season

WARREN - Paul Edwards, former player at Warren High, is presently in contention for a starting position for the Howard College football team. The Hawks opened their season Nov. 6, vs. McMurry in Big Springs.

The West Texas based junior college has a rich football background, winning 20 or more games each of the past five seasons. Coach Harold Wilder has directed the team to the Region V, A-IVA play-offs every year since '68.

The Hawks opened their season Nov. 6, vs. McMurry in Big Springs.

The West Texas based junior college has a rich football background, winning 20 or more games each of the past five seasons. Coach Harold Wilder has directed the team to the Region V, A-IVA play-offs every year since '68.

Edwards To Start Season

Shepherd J.V. Defeats Warren J.V. 14-6

Shepherd Pirates J.V. took the Warren Warriors J.V. 14-6 at Warren last Thursday night. The Warren Warriors started off by making the first touchdown when Earl Smith took a hand-off from Rex Burks. The extra point was tried by Sammy Holloway, but it fell short to the left side with 2:37 left in the first quarter.

Warren led the second quarter when the pirates took over. They evened the score 6-6. The most important points for the Pirates came when they scored the 2-point conversion bringing the score to 8-6 with 8:19 left in the first half. Within five minutes the Pirates scored again when Tom White looked the ball in from the five on a quarterback kick with 1:55 left to half time.

In the third and fourth quarters a neither team scored.

Warren Warriors J.V. are 2 and 2 on their season record with one game left to be played next week against Hardin away.

Bulldog Varsity Over Rebels

The Colmesneil Bulldogs finally captured their first win on Nov. 5 as they downed the Evansville Rebels 65 to 59.

The Bulldogs were really out to win as they got the first points on the board and held the lead throughout the game. At half time the score stood at 14 to 29. The Rebels were no competition for the tough Bulldog offense.

Cathy Hooks, Gina Pickett and Sherri Collier all scored in double figures for the Bulldogs.

The Rebels tried everything, but the Bulldogs kept turning the net for 11 points.

Snake In Exhibit

SAN MARCO - A new star attraction is on the bill for the traveling exhibit of the Texas Wild and Wildlife Department.

Making its debut is a live, two-headed rattlesnake found by eight-year-old Michele Deppensschmidt in the driveway of her home near New Braunfels and caught by her science teacher, Vincent Weisner, Jr. The family decided to donate it to the department.

The 12- to 14-inch rattler has two fully developed heads which seem to operate independently of each other. This makes it an even greater rarity, because most such specimens have the heads attached to each other.

Now the department has the problem of how to go about feeding the creature. One of the few previously recorded snakes with two fully developed heads.

GRAMMER'S GROCERY FOOD SPECIALS

Nov. 13-14-15

McKenzie's Green Peas.....	59c
Banquet Beef Pots.....	39c
24 oz. French Mustard.....	59c
Maxwell House Coffee.....	\$1.51
Amor Beauty Dinner Macaroni and cheese.....	21c
Comt Long Grain Rice.....	69c
40 oz. Biquilck.....	\$1.15
Mrs. Tuckers Shortening.....	63c
Speckled Lima Beans.....	46c
Kraft Cheese Pizza.....	80c
24 oz. Quik Malt-O-Meal.....	65c
Ass't'd Hamburger Helper.....	67c
28 oz. Hunts Whole Tomatoes.....	59c
Lipton Cup-O-Soup.....	59c
Cut Rite Wax Paper.....	35c
46 oz. V-8 Juice.....	67c
Lettuce.....head.....	29c
Fresh Green Cabbage.....	15c
#8 Bag Potatoes.....	89c
2 Roll Toilet Paper.....	75c
MEATS	
Sirloin Steak.....lb.....	\$1.29
T-Bone Steak.....lb.....	\$1.29
Chuck Steak.....lb.....	63c
Club Steak.....lb.....	99c
Square Cut Chuck Roast.....lb.....	79c
Pika Peak Roast.....lb.....	\$1.09
Center Cut Pork Chops.....lb.....	\$1.59
Ground Mxzt 3/4 or more.....lb.....	79c
Sliced Slab Bacon.....lb.....	\$1.59
Rib Stew.....lb.....	58c
Zummo Bologna.....lb.....	89c
End Cut Pork Chops.....	\$1.39

283-2320 1403 W. BLUFF

BEGINNING NOVEMBER 17

You can pay your telephone bills in Woodville at:

WHITE'S AUTO STORE
304 South Magnolia

OPEN Monday thru Saturday from 8:00 a.m. to 6:30 p.m.

Southwestern Bell

JB Best & Co

UNIROYAL RAIN SUITS
Olive or Yellow

Waterproof Jacket \$7.99

Waterproof Jacket with Hood \$9.99

Waterproof Overalls \$7.99

Waterproof Hats \$3.29

INSULATED VEST
\$8.99 to \$23.99

Uniroyal Parka JACKET
no. MVJ 551
Camouflage Waterproof \$23.99

Down Insulated JACKETS
\$39.99 now \$34.99

C.P.O. JACKET
\$13.99 \$9.88

See Our Selection of **HUNTING BOOTS**
RED WING BOOTS
WOLVERINE BOOTS

Lace Up and Slip On **BOOTS** for BOYS \$13.99

See Our Selection of Rubber and Fleece Lined **Waterproof BOOTS**

Men's and Boy's **BASKET BALL SPORT SHOE SHOE**
\$2.99 & \$3.99

Man's 7 to 10 1/2
Boy's 2 1/2 to 6
Ladie's 5 to 10
reg. \$8.99 NOW \$5.88

The Most Famous Brand Jeans **BELL BOTTOMS**
100% cotton
7 Solid Colors
Reg. \$14.50 now \$6.88

The Most Famous Brand Blue Jeans **BIG BELLS**
100% cotton reg. \$14.00 and \$14.50 \$8.88

Men's **HOUSE SHOE**
\$6.99 \$4.88

BOOSTER \$20 WINNERS



Francis Fondren (L.) of Colmesneil accepts a \$20 BOOSTER Football check from the owner of Collins Paint, Mrs. Fondren said she stayed up for most of the Dallas game Monday night saying "Dallas has always been my favorite team."



Virginia Mahaffey (R.) of Colmesneil accepts her \$20 BOOSTER Football Contest Check from Rose Carruth of Service Gas and Appliance, your local Arco dealer.

for the first time SEALY POSTUREPEDIC Hotel Sleep System

DESIGNED IN COOPERATION WITH LEADING ORTHOPEDIC SURGEONS

TWIN \$98

QUEEN SIZE MATTRESS AND BOX SPRING, TWO PIECES \$298

KING SIZE MATTRESS AND BOX SPRING, TWO PIECES \$398

McCLURE FURNITURE CO.
305 N. Magnolia Woodville 283-2520

Hunters! Make This Year's Trophy

Deer Hunting Headquarters

We have everything you need for a successful, enjoyable hunt.

Remington, Winchester & Browning Guns

SULLIVAN'S
For ALL Your Hardware Needs

211 W. Bluff 283-2231

Complete selection of shotgun, rifle, & pistol ammunition
Hunting vests, shell belts, game bags, rifle slings, hunting suits, cleaning accessories
Resident & Non-resident Hunting Licenses

PAY OFF !!

Hunt in Style

with *Outdoor Sportswear* from **BIRDWELL'S**

\$100 IN CASH PRIZES
FOR BUCK WITH WIDEST RACK

FOR ALL YOUR HUNTING NEEDS SEE

WHITE STORES, INC.
304 S. MAGNOLIA

FIRST PRIZE	SECOND PRIZE	THIRD PRIZE	FOURTH PRIZE
\$50 For Widest Rack	\$25 For Second Widest Rack	\$15 For Third Widest Rack	\$10 For Fourth Widest Rack

Cash prizes totaling \$100 will be paid to hunters who register the four legally killed buck deer in Tyler County with the widest rack of antlers during the deer season ending January 1, 1976. All deer must be brought by the TYLER COUNTY BOOSTER office for measurement and picture, and an 8 X 10 photograph will be presented to each person bringing a deer by for measurement. A certified check will be mailed to each winner after they are announced in THE TYLER COUNTY BOOSTER edition of January 6, 1976.

THE SAME RULES WILL APPLY IN EACH PRIZE CATEGORY AND THE WIDTH OF EACH RACK WILL DETERMINE THE WINNER IN ALL CASES. THE NUMBER OF POINTS WILL NOT BE TAKEN INTO CONSIDERATION.

FREE 30-30 Winchester
TO THE FIRST PLACE WINNER COMPLIMENTS
EAST TEXAS LAND CO. & the TYLER COUNTY BOOSTER

Get Your **Hunting and Picnic Supplies** from **GRAMMER'S GROCERY**
283-2520 1403 W. BLUFF

ZER IN ON HUNTING VALUES at **WESTERN AUTO**

Associate Store **JIM GAINES**
216 W. Bluff Street
Phone: BU 3-2134
HUNTING & FISHING LICENSES SOLD HERE

Remember **Follow HUNTING Safety Rules**
TYLER COUNTY BOOSTER

Good Hunting This Season

"See Us for all your Real Estate Needs"

COMMERCIAL • RESIDENTIAL
RANCHES • ACREAGE
APPRAISALS

283-5252
210 SOUTH MAGNOLIA

TAXIDERMY Henry Ogden

"For the Best in Mounting"

Call **837-4488**
Colmesneil

WELDING

PORTABLE & SHOP WELDING
GENERAL & INDUSTRIAL WELDING
MACHINE SHOP SERVICE
REPAIRS ON Farm Machinery • Trucks
Tractors • Trailers • Steel Fabricating

BIRDWELL'S MACHINE & WELDING SHOP
202 East Bluff 283-3405

JIMMY for go anywhere people

A & M Motor Company
S. Magnolia 283-2526

WHY BUY A GAS TANK FOR YOUR NEW MONEY FOR A SMALL CHARGE... YOU CAN RENT ONE FROM



311 SOUTH MAGNOLIA 283-2578

fall & home
WITH THESE SPECIALS FROM LESLO!

ROYAL CHEF BUILT-IN UNIT
ELECTRIC ESC VISUAL LITE DOOR 24" SINGLE OVEN AND TUBS
28" ETB-28 SURFACE UNIT
REG. PRICE 199.95 PRESENT STOCK ONLY **\$179.95**

PHARIS AND OTHER BRAND NO. 2 OVER RUN
TIRE
POLY BELTED AND STEEL BELTED ALL SIZES IN STOCK!
G78 X 13 G78 X 14 G78 X 15 H78 X 15
SOME WHITEWALLS REG. PRICE \$21.95 NOW ONLY **\$19.95**
PLUS F.E.T.

PRESENT STOCK ONLY! HURRY!
ROYAL CHEF 30" SLIDE IN GAS OR ELECTRIC STOVES
WHITE AVOCADO HARVEST GOLD
WAP-330 ELECTRIC BAKE CLEAN REG. PRICE \$219.95 NOW ONLY **\$219.95**
WC 230 GAS or WC 430 ELECTRIC REG. 219.95 NOW ONLY **\$199.95**

COMMERCIAL SECONDS 100% USEABLE
MASONITE TILEBOARD
SALT & PEPPER GOSSIMER GOLD 4X8 SHEETS NOW **\$6.95**
NOW ON SPECIAL
SWIRL PATTERNS SWIRL WHITE SWIRL YELLOW GOLD BROCADE 5X7 SHEET NOW! **\$6.95**

SEWER PIPE
ADS BLACK 4" CORRUGATED PERFORATED
10' JOINT WITH COUPLING **\$285**
SOLID OR PERF. 4" WHITE WITH COUPLING OR BELL END REG. 3.95 10' JOINT **\$349**

STORE HOURS: MON.-FRI. 7:30-5:30 SAT. 7:30-2
LESLO
HOME BUILDING SUPER MARKET
LUFKIN HEMPHILL JASPER

Colmesneil News

The annual Thanksgiving supper will be served at the Community Center on the evening of the 22nd, beginning at 6:00. A devotional will be brought by Bro. Ron Walling, with a brief program following. Everyone is invited to attend and all who desire to do so wear pleated costumes.

During the past week three of our school girls of the past visited their parents in Colmesneil. Brenda Davis Gerard of Houston was with her parents, Mr. and Mrs. Woodrow Davis, and Joette Reed and her husband of St. Louis visited their parents, Mr. and Mrs. Kenneth Belt and Mrs. Tommie Reed of Woodville. Amanda Stover of Lufkin was hosted at a delightful party for the visitors and their friends in the home of her mother, Mrs. Virginia Houston on Saturday evening.

Between halves at the game between Colmesneil and Sabine Pass Junior's sister Dawn was crowned as Band Sweetheart of the year and was presented a lovely corsage. Dawn has been very active in basketball, as twister in speech contests and other activities of the school.

Mr. and Mrs. Homer Gregory spent Sunday in Diboll in the home of their daughter, Frances Covart where they enjoyed a lovely birthday dinner brought by Bro. Ron Walling, with a brief program following. Everyone is invited to attend and all who desire to do so wear pleated costumes.

Leland Schandorff returned last Monday from Wisconsin where he had gone by plane for a month's visit with his grandparents, Mr. and Mrs. Fred Schandorff and other relatives. Leland reported a very enjoyable visit.

Mrs. Gordon Schandorff, accompanied by her mother, Mrs. Gertrude Hignett, visited in the home of Mrs. Dale Wigley in Lufkin on last Friday. While in Lufkin they attended a stork shower honoring their daughter, Connie Wigley.

Wynona Hooper, wife of the late Charles Hooper, sold her home, which was the former Bobby Bandy place, and moved to her new home in Warren during the past week.

Visiting in the home of Ella Boyd during the past week were friends from Nelder: Mrs. Alvin Barry, Mrs. Dorothy Webb and Mrs. Ezora Reimstra.

Nella Wilson enjoyed a reunion at Katy's Baptist Church Sunday where she spent the day greeting old friends and fellow workers of the day when she attended the church.

Vernie Fortenberry spent the weekend in Tyler with her son-in-law and daughter, Mr. and Mrs. James Smith and children.

Lena and Kimberley Freeman of Houston are in Colmesneil on a visit with her father, Kenneth Freeman and family and are considering remaining for the best semester of school.

Mr. and Mrs. Ed McFarland returned Sunday from a few days visit in Pasadena and Houston with his daughter, Mrs. Lucile Hinson and her grand-son, Wayne Matheson and family.

With Mr. and Mrs. Floyd Hignett on Sunday was her cousin, Herschel Ferryman and wife of Woodville, and with her nephew, Jerry Justice were her grand-son and wife, Mr. and Mrs. J.B. Justice of Indian Lake near Fort Neches.

Louise Roberts of Cairo, Georgia visited in Colmesneil over the weekend with her brother, James Mann and his wife of Baytown who have a camp in the lake area. On Saturday the group joined other relatives in a tour of homes of their grand-parents and other places of historical interest.

A delicious chicken dumpling supper was served by the O.E.S. ladies at the Community Center on Sunday, Nov. 16 in celebration of their sixtieth wedding anniversary. Hours for calling are from 2:00 p.m. to 4:00 p.m. The reception is being given by the Novelin's children and their families, Mr. and Mrs. Bertis Davis, Mr. and Mrs. R.L. Comte, Mr. and Mrs. Billy M. Nowlin and Mr. and Mrs. Travis G. Nowlin.

The family requests no gifts please.

Sixtieth Anniversary

Mr. and Mrs. James Nowlin of Colmesneil, Texas, will be honored, with a reception in their home on Sunday, Nov. 16 in celebration of their sixtieth wedding anniversary. Hours for calling are from 2:00 p.m. to 4:00 p.m. The reception is being given by the Novelin's children and their families, Mr. and Mrs. Bertis Davis, Mr. and Mrs. R.L. Comte, Mr. and Mrs. Billy M. Nowlin and Mr. and Mrs. Travis G. Nowlin.

The family requests no gifts please.

Hillister Notes

Mrs. H.H. Brascher has been brought to Tyler County hospital to receive treatment for a hernia after having undergone surgery in Baptist hospital.

Friends of Mrs. Ida Foxworth extend their sympathy to her in the death of her brother Rudy Carroll. Funeral services were held in Kootenay on Monday.

Sunday visitors in the Elton Surruck home were Lee and Pat Murphy of Baytown and Mr. and Mrs. Joe Meek of Beaumont.

Mrs. Karen Crosby of Beaumont was here Thursday for a visit with her grandmother, Mrs. A.M. Morgan.

Mr. and Mrs. J.W. Delamus, Mr. and Mrs. W.G. Hayes, Mrs. Velma Sumrall with Mr. and Mrs. David Delamus and Krista of Lumberton visited Mr. and Mrs. Tom Gardner in Livingston Sunday and were present for the Christmas of the Gardner's little son in the

SINGER SEWING MACHINES New & Used
Call for FREE Home Demonstration. We give complete expert service on all Singer Sewing Machines. We have a credit plan designed to fit your budget.
DIRECT DISCOUNT FURNITURE 283-5211
TIEMANN'S 384-4270
702 S. Wheeler

LINDA'S BEAUTY SHOP
Call for Appointment or Just Drop In.
OPEN 6 DAYS A WEEK
★ Freestings ★ Ear Piercing
★ We have 4 operators
104 South Beach Phone 283-5454

LOTS OF CAT FOR A LITTLE SCRATCH
Uniroyal brings back the Tiger Paw with a Roaring Big Sale.

Now through Nov. 30 you can get a roaring good deal on Uniroyal's new Tiger Paw. This 4-ply polyester cord tire delivers good traction and a smooth ride. Check the box below for the Tiger Paw's Sale prices. But hurry - this limited offer ends Nov. 30th.

Size	Cost	Excise Tax
A78-13	\$23.95	\$2.27
E78-11	\$26.95	\$2.40
F78-11	\$27.95	\$2.40
G78-14	\$29.95	\$2.56
H78-11	\$29.95	\$2.77
G78-15	\$29.95	\$2.60
H78-15	\$29.95	\$2.83
H78-15	\$31.95	\$3.11

Whitewall Tubeless PRICE and old tire off your car.

COMPLETE FRONT END ALIGNMENT AND BRAKE SERVICE
OGDEN'S SERVICE CENTER
NELLIS and PINE STREET
WOODVILLE, TEXAS 283-5546

HAVE YOU MET THIS MAN?

You should meet him, get to know him. He's the expert who has the answers to all your insurance problems - Auto, Life, Business, Home. He can save you money, too. A good man to know. Call him now.
FARMERS INSURANCE GROUP
AUTO - LIFE - FIRE TRUCK - COMMERCIAL
Fast - Fair - Friendly
LEWIS HUDSON
315 KELLEY BLVD. 283-3724 WOODVILLE

'Bi-Purpose' Turkeys Best For Economy

COLLEGE STATION--Consumers will buy "bi-purpose" turkeys this season, says turkey big game producer. Thanksgiving dinner, with less left over for other meals, Frances Beaumont, a turkey and chicken specialist, says.

"Allow three-fourths to one pound per serving if the turkey is 12 pounds or under, or one-half to three-fourths pounds per serving for a heavier bird."

Miss Beaumont is with the Texas Agricultural Extension Service, The Texas A&M University System.

"Frosted leftovers from incalculable quantities by refrigerating right after dinner. Since refrigeration space is usually at a premium during the holiday season, remove meat from bones before wrapping for storage. Add remember to store stuffing separately. Freeze all the meat that cannot be used within two or three days," Miss Beaumont advised.

Make broth to use in soup and casserole dishes later, she suggested.

Put bones and bits of meat and skin in a large kettle, cover with cold water. Add all onion and carrot, a garlic clove, spices and two teaspoons of salt. Cover and bring to a boil. Simmer two hours, then strain the broth. Refrigerate in a covered jar for two days or less.

She suggested some specific uses for "bi-purpose" turkey.

CELEBRATION TURKEY
1/4 cup butter or margarine
1 cup chopped, cooked turkey
2 tablespoons finely chopped onion
2 cups diced raw potatoes

2 1/2 cups cream-style corn
1/2 cup evaporated milk
1/4 teaspoon ginger
3 cup diced celery
2 cups turkey broth
1/4 teaspoon paprika
2 tablespoons chopped parsley
Melt butter or margarine. Add turkey and onion. Cook until onion is transparent. Add potatoes, celery and broth. Stir and cook until slightly thickened. Simmer until vegetables are tender. Then add corn, milk and seasonings. Season to taste. Garnish with parsley and serve with cranberry, hard rolls or toast. Makes 8 servings.

THANKSGIVING BUFFET
CURRIED TURKEY ON RICE
1 tart apple, chopped
1 small onion, finely chopped
1/4 cup butter or margarine
1/2 cup flour
1 or 2 teaspoons curry powder
3/4 teaspoon salt
1/4 teaspoon powdered ginger
1 cup turkey broth
1 cup milk
3 cups cold-up cooked turkey
1 tablespoon lemon juice
3 cups cooked rice
Orange slices as garnish
Cook apple and onion in butter or margarine until onion is transparent. Combine flour, curry powder, salt and ginger. Sprinkle over apple and onion mixture and blend. Stir in broth and milk. Heat slowly and stir to prevent burning. Simmer five minutes. Add turkey and lemon juice. Season. Cover and keep hot five minutes. Serve on hot rice garnished with orange slices. Makes 4 servings.

CONSTITUTION ELECTION RETURNS

TABULATING FORM PROPOSED CONSTITUTIONAL REVISIONS Nov. 1975

VOTING BOX NAME	VOTING BOX NUMBER	No. 1		No. 2		No. 3		No. 4		No. 5		No. 6		No. 7		No. 8			
		FOR	AGAINST	FOR	AGAINST	FOR	AGAINST	FOR	AGAINST	FOR	AGAINST	FOR	AGAINST	FOR	AGAINST	FOR	AGAINST		
Absentee		19	56	19	56	19	55	19	56	18	57	20	55	17	57	18	56	75	1
Woodville S	1	43	193	46	191	51	187	51	186	35	203	44	193	37	197	40	196	238	2
Warren	4	12	97	13	95	14	94	16	92	13	95	13	94	12	96	10	98	109	3
Chester	7	7	73	10	71	9	72	12	70	7	74	8	71	6	75	9	71	82	4
Bethany	8	3	27	1	29	1	30	5	25	1	30	2	29	2	29	1	30	32	5
Emilee	9	7	65	7	65	10	62	10	62	5	67	7	65	8	64	9	63	72	6
Colmesneil	10	14	142	16	139	14	140	15	139	9	144	19	135	12	140	12	141	158	7
Town Bluff	13	17	61	19	61	17	62	21	59	11	65	16	62	17	62	15	63	80	8
Spurger	14	9	137	19	126	13	132	15	131	11	134	11	134	10	135	9	137	147	9
Fred	15	10	73	15	68	11	71	12	71	13	70	12	71	9	73	12	71	83	10
Warren East	16	11	54	13	53	11	54	14	52	8	56	11	55	12	54	10	55	71	11
Woodville East	17	9	48	10	47	7	50	9	47	8	48	7	49	8	48	8	48	57	12
Woodville West	18	61	249	64	245	69	243	67	239	50	258	56	250	55	252	61	247	311	13
Total		222	1275	252	1246	246	1252	266	1229	192	1301	226	1263	206	1282	214	1276	1515	15

GET READY FOR... **BIRDWELL'S**
The Friendly Department Store

"16-HOUR MADNESS"

SALE ALL DAY FRIDAY AND SATURDAY

ENTIRE STOCK

20% OFF DURING THIS SALE

Layaway Now for Merry Christmas Shopping

PALMER BAPTIST CHURCH, High-ville, 4145 S.W. 17th, Sunday School 9:45 a.m.; Morning worship 10:45 a.m.; Evening worship 7 p.m.; Prayer service Tuesday, GA's and Actions 4 p.m.

BEECH CREEK BAPTIST, E.C., Holliston, pastor; Sunday School 9:45 a.m.; morning worship 10:45 a.m.; evening worship 7 p.m.; Wednesday Prayer Service 7:30 p.m.

FIRST BAPTIST CHURCH, Woodville, Corner of West and Charlton; Ph. 283-2795. Dr. Raymond Parker, pastor; Sunday School 9:45 a.m.; Worship Services 10:30 a.m. and 7 p.m.; Youth Choir, 4:30 p.m.; Children's Choir, Wednesday at 5:30 p.m.; RA's and GA's, 4:15 p.m.; Prayer Meeting and Bible Study 7:15 p.m. on Wednesday.

COBB MILL ROAD BAPTIST CHURCH, Woodville, W.C. Hayes, Pastor; Sunday School 9:45 a.m.; Morning worship 10:45 a.m.; Training Union 6 p.m.; Evening worship 7 p.m.; Wednesday GA's, 6 p.m.; Prayer meeting 7:30 p.m.

FIRST BAPTIST CHURCH, Warren, Kenneth Caubien, Pastor; Sunday school 9:45 a.m.; Morning worship 10:45 a.m.; Church training 6 p.m.; Evening worship 7 p.m.

ROCKLAND REVIVAL CENTER, Rockland, Texas, Rev. Miriam L. Covey, Pastor; Services Thursday night 7:30 p.m.; Sunday Morning Worship 10:00 a.m.

NEW SHILOH BAPTIST CHURCH West of Woodville, Manfred Lawson, Pastor; Sunday school 9:45 a.m.; Morning worship 10:45 a.m.; Evening worship 7:30 p.m.

ROCKLAND BAPTIST CHURCH, Rev. Mike Butler, pastor; J.B. Dean, Music Director; Sunday School 9:45 a.m.; Worship Services 10:30 a.m.; Evening worship 6:00 p.m.; Midweek Prayer services Wednesday 7:00 p.m.; Baptist Men meet every first Thursday at 7:00 p.m.

PLEASANT VALLEY BAPTIST CHURCH, Services 1st, 3rd and 5th Sunday, C.S. Road, pastor; song service 10:30 a.m.; Worship Services 11:15 a.m.; Mrs. Grace Davidson, song director; Mrs. Fay Lee Flier, pianist.

OLD SHILOH CHURCH, Services every 1st and 3rd Sunday in month, Bro. Ernest Martin, Pastor. Services begin at 10:45 a.m. promptly. Midweek prayer service Wednesday, 7:30 p.m. Everyone welcome.

KATY BAPTIST CHURCH, Colmesneil, 10 a.m. - Sunday school; 11 a.m. - Worship Services; 6:30 p.m. - Evening worship; 7 p.m. - Wednesday prayer meeting; Durl Patrick, Pastor.

CALVARY BAPTIST CHURCH, Rev. Jimmy Dean, Pastor; Sunday School 9:45 a.m.; Morning worship 10:45 a.m.; Training Union 6 p.m.; Evening service 7 p.m.; Wednesday Pray meeting 7 p.m.

FIRST BAPTIST CHURCH of Hillister, Henry Shetter, pastor; Sunday school 9:45 a.m.; Morning worship 10:45 a.m.; Training Union 6 p.m.; Evening worship 7 p.m.; Wednesday prayer meeting 7 p.m.

GIVE PRAISE IN CHURCH

READY FOR New CARGO

This ship has been equipped with its cargo net and stands ready to take on and hold your cargo for further service. It is this ship's net which is your net. It would be of no value and would be drifting in the sea if you did not build it.

May your net be the net of love and mercy which God has cast over the world. God will be looking for you to cast your net.

FOR THE NET OF LOVE AND MERCY WHICH GOD HAS CAST OVER THE WORLD.

HARMONY BAPTIST CHURCH, Owen Williams, Pastor; Sunday School 9:45 a.m.; Morning worship 10:45 a.m.; Evening worship 7 p.m.; Wednesday 7 p.m.

FIRST BAPTIST CHURCH, Warren, John S. Phillips, pastor; Sunday School 9:45 a.m.; Morning worship 10:45 a.m.; Evening worship 7 p.m.; Wednesday 7 p.m.

FIRST BAPTIST CHURCH of Sugar-Jetty, Clark, Pastor; Sunday School 9:45 a.m.; Morning worship 10:45 a.m.; Evening worship 7 p.m.; Wednesday 7:30 p.m.

FIRST BAPTIST CHURCH of Doacette, Rev. Drew Sheffield, pastor; Sunday school 9:45 a.m.; Morning worship 10:45 a.m.; Training Union 6 p.m.; Evening worship 7 p.m.; Wednesday Prayer meeting 7 p.m.

PLEASANT HILL BAPTIST CHURCH of Spurger; Pastor, Rev. Leslie G. Hooks; Sunday School 9:45 a.m.; Morning worship 10:45 a.m.; Evening worship 7 p.m.

TRUE VINE BAPTIST CHURCH, 1 mile east of Doacette, pastor; Sunday school 9:45 a.m.; Morning worship 10:45 a.m.; Training Union 6 p.m.; Evening worship 7 p.m.; Wednesday 7 p.m.

CHEROKEE BAPTIST CHURCH, services every 2nd and 4th Sunday in the month. Sunday School 10 a.m.; Church 11 a.m.; Evening welcome. Bro. Ernest Martin, pastor.

ROCKY SPRINGS BAPTIST CHURCH, George Frank, pastor; Sunday school 10 a.m.; Morning worship 10:45 a.m.; Training Union 6 p.m.; Evening worship 7 p.m.; Wednesday 7:30 p.m.

MT. CARMEL BAPTIST CHURCH, Jack Lewellen, Pastor; Sunday School, 9:45 a.m.; Morning worship 10:45 a.m.; Training Union 6 p.m.; Evening worship 7:00 p.m.; Wednesday Prayer Meeting, 7:00 p.m.

CHESTER BAPTIST CHURCH, Chester, Pastor, Barney Bryant; Sunday School 9:45 a.m.; Morning worship 10:45 a.m.; Training Union 6 p.m.; Evening worship 7:00 p.m.; Church activity groups meet every Monday after school.

CANEY CREEK BAPTIST CHURCH, Chester, G.M. Stanley, pastor; Sunday school 10 a.m.; Morning worship 10:45 a.m.; Church training 6 p.m.; Evening worship 7 p.m.

FIRST BAPTIST CHURCH OF COLMESNEIL, Sunday school 10 a.m.; Morning worship 10:45 a.m.; Evening worship 7 p.m.; Wednesday W.M.U. 6 p.m.; Prayer meeting 7 p.m.

ENON BAPTIST CHURCH, 4 miles east of Chester on Hwy. 1745, Larry Trea, pastor; Sunday school 9:45 a.m.; Morning worship 10:45 a.m.; Training Union 6 p.m.; Evening worship 7 p.m.; Midweek prayer meeting 7 p.m.; Everyone is welcome.

Obituaries

Katie Wiggins Bass

Mrs. Katie Wiggins Bass, 55, died at 5:00 a.m. Tuesday, Nov. 9, at the Hamilton Hospital Home in Beaumont after a lengthy illness. Mrs. Bass was a life long resident of Tyler. County. She made her home in Beaumont the past year.

Services were held on Saturday, Nov. 9, at 2:00 p.m. at the Edward's Funeral Home Chapel. The Rev. Lewis Ringer and Rev. David Powell officiated. Burial followed in the Warren Cemetery with Eastern Star Grave side rights.

Palmer - Mrs. Alice Cook, 72, died at 12:30 p.m. Tuesday, Nov. 9, at the Hamilton Hospital Home in Beaumont after a lengthy illness. Mrs. Cook was a life long resident of Tyler. County. She made her home in Beaumont the past year.

Services were held on Saturday, Nov. 9, at 2:00 p.m. at the Edward's Funeral Home Chapel. The Rev. Lewis Ringer and Rev. David Powell officiated. Burial followed in the Warren Cemetery with Eastern Star Grave side rights.

Ag Reports

Asked

Some 75,000 Texas farmers and ranchers will receive a crop or livestock questionnaire during the period from mid-November to early January.

This roundup survey of crop production and livestock numbers is made annually by the Texas Crop and Livestock Reporting Service. The Texas Department of Agriculture is the lead agency in the survey. The survey data is used by the U.S. Department of Agriculture to compile reports on the state of the nation's agriculture. The survey is also used by the U.S. Department of Commerce to determine the value of the nation's agricultural production.

Producers from each of the 254 counties in Texas are selected to receive the questionnaire. The selection is made on the basis of operation. The small producer samples many others of comparable size while the very largest producers will represent only themselves. It is equally important for all farmers and ranchers to complete a questionnaire to complete the survey. The questionnaire is available for everyone at the same time. County statistics for the year are available on Livestock, Poultry, Dairy, Field Crops, Small Grains, Cotton, Vegetables, Fruits and Pecans, and Cash Rents.

The questionnaire can be obtained from the Texas Department of Agriculture, Reporting Service, P.O. Box 70, Austin, 78767, or by writing John C. White, Commissioner of Agriculture, P.O. Box 12847 Capitol Station, Austin 78711.

JARROTT'S PHARMACY

283-2550 WOODVILLE

3 DAYS OF SUPER SAVINGS

Walgreen AGENCY

HAPPY ANNIVERSARY SALE

Celebrating 10 years at present location and 23 years of service to the people of Woodville and Tyler County

ALKAL SELTZER	25 TABS.	69¢
CRUEX	8 OZ.	\$2.98
ARRID Extra Dry	14 OZ.	\$2.08
VISINE	1/2 OZ.	\$1.33
APPEDRINE	42'S	\$2.29
Gillette Trac II SHAVING CREAM		\$1.19
SUMMER EVE		46¢
JOHNSON'S BABY SHAMPOO	11 OZ.	\$1.63
JOHNSON'S BABY POWDER	9 OZ.	\$1.07
MAALOX SPECIAL	12 OZ.	\$1.29
LUNCH FOR UNDER \$1		
FROM THE FOUNTAIN GRILLED CHEESE-TUNA FISH		
OR PIMENTO SANDWICH		
CHIPS AND COKE		
ONLY		77¢
COFFEE ONLY 10¢ A CUP ANYTIME		
EARLY AMERICAN LAMPS		\$3.99
CHARLIE by Revlon		
SWEET Earth Candles		
Perfume by Charmers Max Factor		
WOODHUE-APHRODISIA-TIGRESS by Faberge		
NUANCE by Coty		
SPECIAL SELECTION OF JEWELRY 20% OFF		
HAPPY ANNIVERSARY SALE		
TOYS-CARDS-GIFTS-APPLIANCE-FOR CHRISTMAS		
AMOUNTS AND QUANTITIES MAY BE LIMITED		

HOME BLOOD PRESSURE SETS \$24.24

CREST TOOTH PASTE 3 OZ. 59¢

GIFT ITEMS FOR CHRISTMAS

CRICKET LIGHTER reg. \$1.08 \$1.08

L-OREAL Preference SPECIAL HAIR COLORS \$2.33

DEPENDABLE PRESCRIPTION SERVICE REGISTERED PHARMACIST ON DUTY AT ALL TIME

WELFARE RX WELCOME ONE A DAY VITAMINS \$2.88 with Iron \$2.66

SERGENTS FLEA COLLARS \$1.44

Christmas Gift Selections for Men Women and Children

Davis Food Market
Ph. 547-3339 WARREN

J.B. BEST & Co.
CLOTHING & SHOES FOR YOUR FAMILY

Tycos Feed Co.
FEED & FERTILIZER WOODVILLE

Wattco Air
Conditioning & Heating
E. BLUFF Ph. 283-3696

Woodville Convalescent Center
Ph. 283-2555 102 N. Beach Woodville

Ogden Chevrolet
COLMESNEIL Ph. 837-9448

McClure Furniture
WOODVILLE Ph. 283-2619

Southeast Texas Saving & Loan

Jarrott's Pharmacy
205 S. Magnolia Ph. 283-2550

CITIZENS STATE BANK
P.O. BOX 100 WOODVILLE, TEXAS 76797

CHURCH OF CHRIST

WOODVILLE CHURCH OF CHRIST, Hwy. 190 West, Sunday Bible school 10 a.m.; Morning worship 10 a.m.; Evening worship 7 p.m.; Wednesday Bible study and worship 7 p.m.; Everyone is welcome.

EPISCOPAL

ST. PAUL'S EPISCOPAL CHURCH, Hwy. 190, Dr. George Floyd, Vicar; Sunday services 8:30 a.m.; 1st and 3rd Morning Prayer, 2nd and 4th Holy Communion. Further information call 283-2544.

LUTHERAN

ST. PAUL LUTHERAN CHURCH Serving Tyler, Jasper and Sabine Counties - Meeting in Jasper Youth Center; Sunday School 8 a.m.

METHODIST

SPURGER UNITED METHODIST, Pastor, Eric Williams; Sunday School 9:45 a.m.; Morning worship 10:45 a.m.; Evening worship 7:30 p.m.

WOODVILLE UNITED METHODIST CHURCH, C. Wayland Elmore, pastor; Sunday school 9:45 a.m.; Morning worship 10:45 a.m.; UMYF meeting 6:30 p.m.; Evening worship 7 p.m.

CHESTER MOUNT HOPE UNITED METHODIST CHURCH, Chester, Rev. J. Adams, pastor; worship service 11 a.m.; Evening worship 6 p.m.; Church school 10 a.m.; Bible study 7 p.m.; (Each Wednesday - Mt. Hope Service 11 a.m.; Fourth Sunday).

WARREN UNITED METHODIST CHURCH, Rev. E. Davis, Powell III, Minister; Sunday School, 10:00 a.m.; Morning worship 10:45 a.m.

CHURCH OF JESUS CHRIST OF LATTER DAY SAINTS

CHURCH OF JESUS CHRIST OF LATTER DAY SAINTS, Woodville, Priesthood 9 a.m.; Sunday school 10:30 a.m.; Sacrament meet 5:30 p.m.; presented by Noah Lee Crosby.

APOSTOLIC

AP'OSTOLIC TABERNACLE, a United Pentecostal Church, Rev. E.L. Thomson, pastor; Sunday School 10 a.m.; Evening Services, 7:30 p.m.; Thursday Bible Study, 7:30 p.m.

PENTECOSTAL

PENTECOSTAL-HAMPTON HILL-1 mile east of Chester. James Troy Loving, pastor. Services: Saturday 7:30 p.m. and Sunday; Sunday School 10 a.m.; Morning Worship 11 a.m.; and Evening Worship 7:30 p.m.

WARREN UNITED PENTECOSTAL CHURCH, Sunday School 10 a.m.; Sunday night service 7 p.m.; Wednesday night 7:00 p.m.; James L. Babin, pastor.

ASSEMBLY OF GOD

HILLISTER ASSEMBLY OF GOD CHURCH, Rev. D.K. Martin, pastor; Sunday School 10 a.m.; worship service 11 a.m.; Young People's Service 6 p.m.; Evening worship 6:30 p.m.; Thursday Bible Study 7 p.m.

SHADY GROVE ASSEMBLY OF GOD CHURCH, West of Woodville, Sister Lela Brown, pastor; Sunday School 10 a.m.; Evening worship 6:30 p.m.; Wednesday service for youth 7 p.m.

ASSEMBLY OF GOD, E.C.

Tillery, Pastor, Sunday School 9:45 a.m.; Worship service 11 a.m.; Evening worship 7 p.m.; Wednesday Bible Study 7 p.m.

Western Auto Associate Store
Refrigerator Sales & Service

Magnolia Drive-In Grocery
NORTH-SOUTH-WEST

Service Gas & Appliance Co.
Butane Bottle Filling Jerry A. Carruth, operating manager Ph. 283-5349 Woodville, Texas

Jack Lane Ford
Jack Lane, President 104 Pine Street Ph. 283-2526 Res. Ph. 283-2716

WATCH FOR OPENING

J.B. WHITE Store

Brookshire Bros.
Woodville

Boykin Lumber Co.
Ph. 283-2731 Woodville

Woodville Inn
"WOODVILLE'S FINEST" NOON BUFFET DAILY. EVERYONE WELCOME!

A & M Motor Co. Inc.
Ph. 712-283-2584 Woodville

Harrington Electric & Plumbing Service

Dinner Set

COLMESNEIL--The American Restaurant, a modern dining room, is located in the new building on Hwy. 1745, Larry Trea, proprietor. The restaurant is open for the season of Thanksgiving and gratitude will be the inspiration for this gathering. Hostesses will be present to provide a festive occasion, state President E.C. Flieder, as he presides the members of the final social outing of the year for the chapter.

LODGE MEETINGS

Stated Communications

SNOW RIVER LODGE #385 AF & AM, Spurger, 7:30 p.m., 1st Saturday of the month. Practice meetings 2nd and 4th Monday. Visiting brethren welcome. Jesse W. Ward - W. M.; S. H. Jordan - Secretary.

ROCKLAND LODGE #260 AF & AM, Rockland, 7:30 p.m., 3rd Saturday of the month. Visiting brethren invited. Habert Unsworth - W.M.; Doc Sikes - Secretary.

MAGNOLIA LODGE #495 AF & AM, Woodville, 7:30 p.m., 1st Tuesday of every month. Visiting brethren invited. James P. W. M.; E. Dean Sloan, Secretary.

YELLOW PINES LODGE #79 AF & AM, Colmesneil, 7:30 p.m., 4th Saturday of every month. Visiting brethren invited. James P. W. M.; E.C. Flieder, Secretary.

WARREN CHAPTER OF O.E.S., Woodville, 7:30 p.m., 2nd and 4th Thursday of every month. Visiting brethren invited. Carl Johnson - W. M.; Carl Johnson - W. F.

COLMESNEIL CHAPTER OF O.E.S., Colmesneil, 7:30 p.m., 2nd and 4th Thursday of every month. Visiting brethren invited. Carl Johnson - W. M.; Carl Johnson - W. F.

CHURCH OF CHRIST

604 Pine St.
Sunday Services:
Bible Study 10 a.m.;
Worship 11 a.m. & 6 p.m.

GOSPEL MEETING
Nov. 17-23

CHARLIE by Revlon

SWEET Earth Candles

Perfume by Charmers Max Factor

WOODHUE-APHRODISIA-TIGRESS by Faberge

NUANCE by Coty

SPECIAL SELECTION OF JEWELRY 20% OFF

HAPPY ANNIVERSARY SALE

One Stop Shopping

TOYS-CARDS-GIFTS-APPLIANCE-FOR CHRISTMAS

AMOUNTS AND QUANTITIES MAY BE LIMITED

IT'S OUR POLICY TO PROTECT YOUR FAMILY

As your family grows, so do your insurance needs. We can help you plan sensible, low cost coverage for every need... now and for the future.

Feagin Insurance

3-2242 212 W. Bluff

RUTH BERRY WORLD'S FINEST WATER PUMP

Cannot lose priming... With no pump in the water tank, no burned out seals or motor overload from lack of fluid.

PARGAS

211 S. Magnolia 283-2578

THE HARTFORD

Globe-Mann Ins. Agency

283-2528 Woodville, Texas Tom McGuire, Mgr.

BIG JACKPOT DAY

GET YOUR JACKPOT DAY CARD PUNCHED

FREE CASH

WIN FREE CASH \$100.00

NEW EXCITING WEEKLY CONTEST

IT'S NEW! IT'S GREAT

GET YOUR JACKPOT DAY CARD PUNCHED FREE THIS WEEK



The Witnesses

The Witnesses, a musical outreach team from the First Baptist Church of Orange Texas, will be at the First Baptist Church in Warren, Sunday night, Nov. 14, at 7 p.m.

Petticoat Politics

Director Gully... Just as one crisis passes in Washington, it seems another is waiting to pounce on their surfaces.

Dr. Gary E. Tatum, Optometrist

WOODVILLE INN, ROOM 107 WEDNESDAY, 9 - 5 p.m.

Tootlem Creek To Open

Tootlem Creek Regional Center for Artisans will open December 2 at 10:30 a.m. The aim of the center is to have in one location a place where visitors to the area can see and purchase articles produced by artists and craftsmen in the area.

Livingston Sand Blasting & Painting Service

Specializing in Blasting, Steeplejack Farm Equipment, Horse Trailers, Storage Tanks, House & Metal-Roof Painting

Gary L. Vess

327-8928

Home Demo. Council Report

WOODVILLE-The Tyler County Home Demonstration Council met Monday night, Nov. 8, at the home of Mrs. Blahah Mae-Baugh.

Figure Egg Value Easily

Determining the best size egg to buy for the money is difficult choice for many consumers.

GRIFFIN'S PHARMACY

PHONE 283-2163

Your Doctorial in Store



OLDEST DRESSED BEST

Oldest lady, Amanda West, along with J.T. Ayres, both of Woodville, were the winners last week of the J.B. White Company grand opening.

Love Gets Promoted

Allen D. Lovell, while on duty with the United States Air Force, was recently promoted to the rank of Staff Sergeant.

Cousins Mate Is Host

Navy Machinist's Mate Third Class John I. Cousins, son of Mr. and Mrs. Bruce Cousins of Woodville, Texas, recently helped host a visit by Secretary of the Navy, William P. Friedman, homeported at Naples, Italy.

Siau Armes For Duty

JAMPA, Fla.—U.S. Air Force Sergeant James W. Siau, son of J.L. Thacker of Warren, Texas, has arrived for duty at MacDill AFB, Fla.

DOGWOOD COUNTRY

WOODVILLE, IN SCENIC SOUTHEAST TEXAS HILLS

CHAMPIONSHIP GOLF COURSE

RENTAL PARTS & EQUIPMENT, PRO SHOP

TENNIS COURTS

LIGHTED LAYKOLD SURFACE, PRO SHOP

OLYMPIC SWIMMING POOL

HI/LD. DIVES, AQUA SLIDE, WADE POOL, COMPETITION

SHOOTING RANGE

TARGETS, SKIRT & TRAP, PISTOL & RIFLE REGULATIONS

ARCHERY FIELD

LESSONS, TARGETS, RENTAL EQUIPMENT

MEMBERS, GUESTS & TOURISTS WELCOME

COME JOIN US AT.....

DOGWOOD COUNTRY CLUB & RECREATIONAL RESORT

U.S. HIGHWAY 190, 3 MILES WEST OF WOODVILLE, TEXAS BETWEEN HERITAGE VILLAGE & THE INDIAN RESERVATION

TELEPHONE 1-713-883-3088 / P.O. BOX 774, 75975

Gospel Singing Set

WARREN—There will be a Gospel Singing at the Bethel Baptist Church in Warren, Sat. night, Nov. 13 at 7:00 p.m.

See SANTA in DORSON

Photographer

7 to 9 Here

7 to 9 Here

TUESDAY - WEDNESDAY

301 N. Magnolia

283-3756

Livingston Sand Blasting & Painting Service

Specializing in Blasting, Steeplejack Farm Equipment, Horse Trailers, Storage Tanks, House & Metal-Roof Painting

Gary L. Vess

327-8928

DON'S HEATING & AIR CONDITIONING

SALES AND SERVICE

CENTRAL AIR CONDITIONING

COMMERCIAL REFRIGERATION

HAVE YOUR HEATING UNITS CHECKED NOW

BEFORE IT GETS COLDER

WOODVILLE 283-3722

CHESTER 969-2534

Public Notices

EXECUTION SALE

STATE OF TEXAS

County of Tyler

In the District Court of Tyler County, Texas

Local District, Robert A. Mann, Executor and Trustee of the E.P. Mann Estate vs. The Estate of MICHAEL WAYNE PARKER DECEASED.

Notice

PUBLIC HEARING NOTICE

Notice is hereby given that a Public Hearing will be held by the City of Woodville, Texas, at 7:00 p.m., November 24, 1976 at the Council Chamber, City Hall, Woodville, Texas.

YOUTH NIGHT

There will be a special "Youth Night" held Saturday, Nov. 13 at 7:30 p.m. at the City Baptist Church in Colton.

Public Notices

EXECUTION SALE

STATE OF TEXAS

County of Tyler

In the District Court of Tyler County, Texas

Local District, Robert A. Mann, Executor and Trustee of the E.P. Mann Estate vs. The Estate of MICHAEL WAYNE PARKER DECEASED.

Public Notices

EXECUTION SALE

STATE OF TEXAS

County of Tyler

In the District Court of Tyler County, Texas

Local District, Robert A. Mann, Executor and Trustee of the E.P. Mann Estate vs. The Estate of MICHAEL WAYNE PARKER DECEASED.

Public Notices

EXECUTION SALE

STATE OF TEXAS

County of Tyler

In the District Court of Tyler County, Texas

Local District, Robert A. Mann, Executor and Trustee of the E.P. Mann Estate vs. The Estate of MICHAEL WAYNE PARKER DECEASED.

Public Notices

EXECUTION SALE

STATE OF TEXAS

County of Tyler

In the District Court of Tyler County, Texas

Local District, Robert A. Mann, Executor and Trustee of the E.P. Mann Estate vs. The Estate of MICHAEL WAYNE PARKER DECEASED.

"Your Freedom Account"

Money in a savings account frees you from financial worry. And with our passbook savings account, you're free to choose how much to save, and when to save it.

Jasper Federal Savings & Loan

Jasper, Texas

Public Notices

EXECUTION SALE

STATE OF TEXAS

County of Tyler

In the District Court of Tyler County, Texas

Local District, Robert A. Mann, Executor and Trustee of the E.P. Mann Estate vs. The Estate of MICHAEL WAYNE PARKER DECEASED.

Public Notices

EXECUTION SALE

STATE OF TEXAS

County of Tyler

In the District Court of Tyler County, Texas

Local District, Robert A. Mann, Executor and Trustee of the E.P. Mann Estate vs. The Estate of MICHAEL WAYNE PARKER DECEASED.

Public Notices

EXECUTION SALE

STATE OF TEXAS

County of Tyler

In the District Court of Tyler County, Texas

Local District, Robert A. Mann, Executor and Trustee of the E.P. Mann Estate vs. The Estate of MICHAEL WAYNE PARKER DECEASED.

Public Notices

EXECUTION SALE

STATE OF TEXAS

County of Tyler

In the District Court of Tyler County, Texas

Local District, Robert A. Mann, Executor and Trustee of the E.P. Mann Estate vs. The Estate of MICHAEL WAYNE PARKER DECEASED.

Public Notices

EXECUTION SALE

STATE OF TEXAS

County of Tyler

In the District Court of Tyler County, Texas

Local District, Robert A. Mann, Executor and Trustee of the E.P. Mann Estate vs. The Estate of MICHAEL WAYNE PARKER DECEASED.

CLASSIFIED ADS!

FOR SALE

Direct Furniture Discount
 Carpet Sales at 306 N. Magnolia St., Woodville, has in stock 100's of carpet now for immediate delivery and we install. Phone 283-2211, 10-10.

FOR SALE: Chain saws, new 120 cc up with carry case. Used saw good selection all price ranges. HomeLife, M. Marguerite's Flower Shop, 708 S. Magnolia. 10-10.

MOLDING PLASTER
 Ceramics, Artists and Craft Supplies, China Blanks. Marguerite's Flower Shop, 708 S. Magnolia. 10-10.

SPECIAL
 90 weight oil, 5 gallons \$8.85.

DURHAM SAW CO.
 For Sale: 9 large Red Cherteyer Hens and 1 cock. H. no. 541, \$2.75 each. 10-10.

MEMORIALS OF DISTINCTION
 WHERE YOU GET THE BEST FOR LESS. Charles Britnell, 283-2824. 87-10c.

LOGGERS: Wholesale prices
 saws, 25% on loggers supplies, Hyd. hoses all sizes, chain, cutters, chainsaws, MILL SUPPLIES, JACOBY, TEXAS 383-2824. 9-10.

FOR SALE OF TRAILER: Registered Black Angus Bull, Phone 283-2266. 52-10c.

Garage Sale

Garage Sale: 5 piece dining room with china cabinet, couch & chair, sectional couches, refrigerator, deep-freeze combination, clothes and misc. Sale starts Saturday, Nov. 13 at 9:00 a.m. Next door to Church of Christ on Livingston Hwy. 10-10.

3 Family Garage Sale: Baby things, girls, boys, women & men clothes, kitchen items, toys, books, light fixtures, bedspreads, T-shirts, J.P. & Salt, Nov. 13, 14 & 15. 283-2491. 10-10.

For Sale: 1974 Bass Rig, 16 ft. Ranger Pro Bass Boat, 300 hp. Chrysler Motor, Ralph. Neely custom, drive on trailer, with spare tire, Super motorcycle trolling motor, Lawrence depth finder, anchor, rod & reels, 2 gas tanks, 2 batteries, horn, tachometer, speedometer, cigarette lighter. Also three Ambassadors, reels, 3 Fenwick rods, 3 tray tackle box full of baits & worms & 2 Stearns life vests. All this for \$3,800.00. Call 283-2287 after 6:00. 9-10.

For Sale: Big Stool fourteen year old, holding a good hunting horse that will drop from the saddle box. I. Phone 283-2554. 10-10.

For Sale: House-Chaining, Sinks, bath, etc. For information call L.L. Harter. 283-2430. 10-10.

WANTED: Desperately need PEANUT and 3 pecan nuts. Fairly priced. 283-5744. 8-10.

CLASSIFIED RATES:

Per word per week: \$5 for first week, \$3.25 for each week thereafter. Classified ads are classified as to length and content. All classified ads must be submitted by 5:00 p.m. Monday or before. Any changes or cancellations must be made before 10:00 a.m. on Tuesday.

Per line per week: \$1.50 for first week, \$0.75 for each week thereafter. Classified ads are classified as to length and content. All classified ads must be submitted by 5:00 p.m. Monday or before. Any changes or cancellations must be made before 10:00 a.m. on Tuesday.

WANTED

Wanted: Buy Sugar Cane Seeds (Blue type) Write to R.L. 2, Box 182B, Warren, Texas 77664. D.C. Overstreet. 10-10.

Wanted: Desperately need PEANUT and 3 pecan nuts. Fairly priced. 283-5744. 8-10.

REAR END

REAR END: 3 Bdrm. home with 2 1/2 baths, located 3 miles from Woodville Courthouse on Shuluck road. Shown by appointment only. Call 283-4270 in Jasper. 8-10c.

REAR END: For Rent: Furnished home 1 mile, community water, garage, 1 acre, double 6 m. lawn, 246 mbl. Call 283-3740. 10-10c.

REAR END: Trailer for Rent: 1 Br. furnished, quiet, shade, \$120 per month. Dogwood, N.W. Park 283-3022. 10-10c.

REAR END: 9-Rm. House for Sale: to be moved. Call 283-2070 B.J. Smith. 8-10c.

REAR END: For Sale: Brick house, 3 bdrms., 2 bath, kit & den, 2 car garage, new carpet, paint, CH/A, dishwasher, garbage disposal, utility area. Financing available. Holiderman 283-3727. McCombs 283-2125.

REAR END: For Sale: 3 BR. house, 2nd floor, fireplace, big garage, on private lake. By Owner, 1/2 % loan assumption, \$42 M. total price 78-283-6767 or 283-5055. 10-10c.

REAR END: For Sale: 1 ac., close to Woodville, good road, water & lights available. Terberry owned. McCombs 283-2135.

NEED HELP

NEED HELP: TEXAS REFINERY CORP. offers PLENTY OF MONEY plus cash bonuses, fringe benefits to mature individual in Woodville area. Regardless of experience, firm. L.N. Pitts, Texas Refinery Corp., Box 71, Fort Worth, Texas 76107. 10-10c.

NEED HELP: SALESPERSON WANTED: We have several sales positions open in our Jasper, Tx. office. Applicant must be willing to work hard to produce large commissions. Salary plus commissions available. This is a terrific opportunity for a beginner or an experienced salesperson. Start 2 week survey in home sales now. Call Jerry Gommillion, collector, Jasper, Tx, 713-384-5416. Jim Waller, 283-2266. Equal Opportunity Employer.

CRAVEN BROTHERS

CRAVEN BROTHERS
 Crushed Rock Roads, Fills, Driveways
RICKY CRAVEN
 283-5786 or 283-3883

COMPLETE Custom butchering service. Cutting and wrapping 15¢ per pound. 30-min. shipping every day. All we sell is service. Kountze-Sour Lake Highway 326, 12 mi. from Kountze, 287-3602, by appointment only. 10c

Expert Sh. Cng.
 STARTING AT \$500. Satisfaction guaranteed. 397-2229.

Experts: Sh. Cng.
 205 E. Hill
 Woodville, Texas 283-2779

SECRET GUN SHOP

SECRET GUN SHOP
 2 miles South of Woodville on Hwy. 69.
 283-5301

J. H. HOLMES GENERAL TREE EXPERT
 CALL 283-3279 P.O. Box 593 WOODVILLE

WILLIAMS MEAT CO.
 LIVINGSTON, TEXAS
 Custom slaughtering & processing Feed lot beef, smoked pork products
 LOCATION FARM RD. 350 PHONE 967-4364

W.O. JORDAN

W.O. JORDAN Home
 283-5361 F.M. 429-3379

For the Best in Furniture and appliances, see MCLURE FURNITURE
 Zenith, Maytag, La-Z-Boy, Chairs, Tilt City, Simmons, Sealy, Amara, Bassett Furniture, Amana, Kenmore, Kenmore, Ogen Johnson, Alma Johnson, Mrs. George W. Sweet, Kattie M. Peck and Kattie M. Peck are the Defendants.
 A brief statement of the nature of this suit is as follows:
 A suit in repleas to try title: Plaintiff seeks to recover fee simple title and possession to the North 1/2 of (N. 1/2) of lot certain 28.3 here tract of land, more or less.

WOODVILLE REALTY

WOODVILLE REALTY
 BETTY WEEKS 283-3110

REAL ESTATE

REAL ESTATE: In this area, 2 bdrn. home and 2 1/2 ac. improved pasture, barn, lake, pump, spring branch, fruit trees, garden, near Woodville, \$23,800.

BRICK, 3 bdrms 2 bath, cent H/A, enclosed garage, garden, on water line, on one acre near Woodville city limits, \$25,750.

Nice furnished home on lake near Colmesneil, water front lot, has carpet and drapes, fireplace, only \$16,500. Furnished home on lake near Colmesneil, shade trees, \$6,975.

BRICK, 3 bdrms, 2 bath, cent H/A, extra large wooded lot in choice location of Colmesneil, \$26,500.

15 ac. near Warren, nice landscape, 3 Bdr., brick, with long highway frontage, has barn, pens, lake, this time place is only \$75,000.

BUILDING SITES, opening new subdivisions, nice lots, paved streets, priced right.

2 acres in Harmony community. \$15 ac. near Woodville and Colmesneil, \$695 ac. 10 ac. near Warren, nice landscape, 3 Bdr., brick, 30-70 ac. timber land, frontage on Dog Creek, excellent hunting, at only \$450 ac.

30 ac. timber with furnished mobile home, spring branch, 34 ac. timber on Hwy 69 near Colmesneil.

50 ac. timber near Neches river, excellent deer and duck hunting, adjoins large Govt. tract, \$490 ac.

72 ac. timber near Rush Creek, plenty deer, \$450 ac.

145 ac. timber located about 9 miles East near Hwy 190, stream, lake site, \$600 ac.

Gen. Mdbk. store with filling station located on Highways 69 and 287 South near Woodville, has 2 ac. land, mobile home and other bldgs. doing nice business, due to illness, must sell, has large stock, \$27,900.

Nice Business location on South Magnolia St., has 3 rent houses, good income property, priced.

WE NEED PROPERTY TO SELL, HAVE PLENTY BUYERS LIST YOURS WITH US.

J. R. COATS REAL ESTATE
 110 N. Magnolia St. Office ph. 283-2465, Woodville, Texas H.D. Schulte res. ph. 283-3564 - J.R. Coats ph. 283-3772.

COMMERCIAL

COMMERCIAL: Gen. Mdbk. store with filling station located on Highways 69 and 287 South near Woodville, has 2 ac. land, mobile home and other bldgs. doing nice business, due to illness, must sell, has large stock, \$27,900.

Nice Business location on South Magnolia St., has 3 rent houses, good income property, priced.

WE NEED PROPERTY TO SELL, HAVE PLENTY BUYERS LIST YOURS WITH US.

J. R. COATS REAL ESTATE
 110 N. Magnolia St. Office ph. 283-2465, Woodville, Texas H.D. Schulte res. ph. 283-3564 - J.R. Coats ph. 283-3772.

SERVICES

SERVICES: TOP DOLLAR Payed for Good Used Cars and Trucks. DOUG'S AUTO 283-3680 410 N. Magnolia Phone 283-2519

CLOCKS REPAIRED
 ALL TYPES RESTORED FREE ESTIMATE. All work guaranteed, Wyle Westbrook, 111 S. Pecan St., Woodville, Texas, 283-2626. 10c

COMPLETE Custom butchering service. Cutting and wrapping 15¢ per pound. 30-min. shipping every day. All we sell is service. Kountze-Sour Lake Highway 326, 12 mi. from Kountze, 287-3602, by appointment only. 10c

Expert Sh. Cng.
 STARTING AT \$500. Satisfaction guaranteed. 397-2229.

Experts: Sh. Cng.
 205 E. Hill
 Woodville, Texas 283-2779

W.O. JORDAN

W.O. JORDAN Home
 283-5361 F.M. 429-3379

REAL ESTATE

REAL ESTATE: 64 acres, 15.21 acres, 10.26 acres, 10.41 acres, 9.83 acres.

1.07± ranchettes, and acreage, hardwood trees at Saurter Hwy. Frontage on 103.

OLD HOME PLACE: In Camp Ground Community, 4.00± acres, front on Hwy 256 and Hwy 45.

40 acres with 774 ft. highway frontage on 69, South of Highway Lake site, 1 ac. wooded, 3 ac. 10-10c.

5 ac. open land at Surger, ready to farm, good house, 11.22 acre underbrush, fenced and lake site. Includes all hardwood area and level land.

Any or all of my land will go Texas Veterans. Iron ore, gravel, clean wash gravel, Masonary sand, fill dirt and top soil.

Buildzuer work and back hoe.

2 BR, family rm., fully furnished, 1600 sq. ft. house, drive into carport. New roof, new paint, store house, well and public water, Welded metal boat and car shed, double gate out back. Flgs, appls, only \$6,500. Best for couple or a weekend home.

2 BR, 1 1/2 bath, frame home, Liv. rm., fireplace, sp. Kit, & Din area. Windowed porch for sleeping & off Kit for utility. Needs, 1 ac. Hwy. 69 front, fronted, \$7,500. Very good location for commercial purposes.

North Colmesneil, \$9,000.

2 BR, Liv. Rm., fireplace, Kit Din area with bar & small patio. Double garage could be easily converted to playroom. Brick, 1 1/2 story frame unfinished & small 10' x 12' bath. Well. Can have public water, 100 ft on Hwy. 69, 400 ft on St. and only \$16,000. Room for another house and each a garden.

24± acres, 10± cleared, ready to plant or pasture, 14 wooded, site, 10± cleared. Can buy 10-15 or all. All \$55 per acre, fenced.

Lot ready to build, 90 x 145 ft. Good neighborhood, \$5,500.

100± ac. timber, 720± ft. inventory, double shop, car- port, with office, pond & a 2-gallon public water, 5 miles out on back lot of Hwy. 69. This extra 100± ac. includes 2 1/2 ac. wooded, 3 BR, live Liv. area carport, bar, antique cabinets, dishwasher, all electric, well water, 300± sq. ft. finished, 1000 sq. ft. rear porch with office, pond & a 2-gallon public water, 5 miles out on back lot of Hwy. 69. This extra 100± ac. includes 2 1/2 ac. wooded, 3 BR, live Liv. area carport, bar, antique cabinets, dishwasher, all electric, well water, 300± sq. ft. finished, 1000 sq. ft. rear porch with office, pond & a 2-gallon public water, 5 miles out on back lot of Hwy. 69. This extra 100± ac. includes 2 1/2 ac. wooded, 3 BR, live Liv. area carport, bar, antique cabinets, dishwasher, all electric, well water, 300± sq. ft. finished, 1000 sq. ft. rear porch with office, pond & a 2-gallon public water, 5 miles out on back lot of Hwy. 69. This extra 100± ac. includes 2 1/2 ac. wooded, 3 BR, live Liv. area carport, bar, antique cabinets, dishwasher, all electric, well water, 300± sq. ft. finished, 1000 sq. ft. rear porch with office, pond & a 2-gallon public water, 5 miles out on back lot of Hwy. 69. This extra 100± ac. includes 2 1/2 ac. wooded, 3 BR, live Liv. area carport, bar, antique cabinets, dishwasher, all electric, well water, 300± sq. ft. finished, 1000 sq. ft. rear porch with office, pond & a 2-gallon public water, 5 miles out on back lot of Hwy. 69. This extra 100± ac. includes 2 1/2 ac. wooded, 3 BR, live Liv. area carport, bar, antique cabinets, dishwasher, all electric, well water, 300± sq. ft. finished, 1000 sq. ft. rear porch with office, pond & a 2-gallon public water, 5 miles out on back lot of Hwy. 69. This extra 100± ac. includes 2 1/2 ac. wooded, 3 BR, live Liv. area carport, bar, antique cabinets, dishwasher, all electric, well water, 300± sq. ft. finished, 1000 sq. ft. rear porch with office, pond & a 2-gallon public water, 5 miles out on back lot of Hwy. 69. This extra 100± ac. includes 2 1/2 ac. wooded, 3 BR, live Liv. area carport, bar, antique cabinets, dishwasher, all electric, well water, 300± sq. ft. finished, 1000 sq. ft. rear porch with office, pond & a 2-gallon public water, 5 miles out on back lot of Hwy. 69. This extra 100± ac. includes 2 1/2 ac. wooded, 3 BR, live Liv. area carport, bar, antique cabinets, dishwasher, all electric, well water, 300± sq. ft. finished, 1000 sq. ft. rear porch with office, pond & a 2-gallon public water, 5 miles out on back lot of Hwy. 69. This extra 100± ac. includes 2 1/2 ac. wooded, 3 BR, live Liv. area carport, bar, antique cabinets, dishwasher, all electric, well water, 300± sq. ft. finished, 1000 sq. ft. rear porch with office, pond & a 2-gallon public water, 5 miles out on back lot of Hwy. 69. This extra 100± ac. includes 2 1/2 ac. wooded, 3 BR, live Liv. area carport, bar, antique cabinets, dishwasher, all electric, well water, 300± sq. ft. finished, 1000 sq. ft. rear porch with office, pond & a 2-gallon public water, 5 miles out on back lot of Hwy. 69. This extra 100± ac. includes 2 1/2 ac. wooded, 3 BR, live Liv. area carport, bar, antique cabinets, dishwasher, all electric, well water, 300± sq. ft. finished, 1000 sq. ft. rear porch with office, pond & a 2-gallon public water, 5 miles out on back lot of Hwy. 69. This extra 100± ac. includes 2 1/2 ac. wooded, 3 BR, live Liv. area carport, bar, antique cabinets, dishwasher, all electric, well water, 300± sq. ft. finished, 1000 sq. ft. rear porch with office, pond & a 2-gallon public water, 5 miles out on back lot of Hwy. 69. This extra 100± ac. includes 2 1/2 ac. wooded, 3 BR, live Liv. area carport, bar, antique cabinets, dishwasher, all electric, well water, 300± sq. ft. finished, 1000 sq. ft. rear porch with office, pond & a 2-gallon public water, 5 miles out on back lot of Hwy. 69. This extra 100± ac. includes 2 1/2 ac. wooded, 3 BR, live Liv. area carport, bar, antique cabinets, dishwasher, all electric, well water, 300± sq. ft. finished, 1000 sq. ft. rear porch with office, pond & a 2-gallon public water, 5 miles out on back lot of Hwy. 69. This extra 100± ac. includes 2 1/2 ac. wooded, 3 BR, live Liv. area carport, bar, antique cabinets, dishwasher, all electric, well water, 300± sq. ft. finished, 1000 sq. ft. rear porch with office, pond & a 2-gallon public water, 5 miles out on back lot of Hwy. 69. This extra 100± ac. includes 2 1/2 ac. wooded, 3 BR, live Liv. area carport, bar, antique cabinets, dishwasher, all electric, well water, 300± sq. ft. finished, 1000 sq. ft. rear porch with office, pond & a 2-gallon public water, 5 miles out on back lot of Hwy. 69. This extra 100± ac. includes 2 1/2 ac. wooded, 3 BR, live Liv. area carport, bar, antique cabinets, dishwasher, all electric, well water, 300± sq. ft. finished, 1000 sq. ft. rear porch with office, pond & a 2-gallon public water, 5 miles out on back lot of Hwy. 69. This extra 100± ac. includes 2 1/2 ac. wooded, 3 BR, live Liv. area carport, bar, antique cabinets, dishwasher, all electric, well water, 300± sq. ft. finished, 1000 sq. ft. rear porch with office, pond & a 2-gallon public water, 5 miles out on back lot of Hwy. 69. This extra 100± ac. includes 2 1/2 ac. wooded, 3 BR, live Liv. area carport, bar, antique cabinets, dishwasher, all electric, well water, 300± sq. ft. finished, 1000 sq. ft. rear porch with office, pond & a 2-gallon public water, 5 miles out on back lot of Hwy. 69. This extra 100± ac. includes 2 1/2 ac. wooded, 3 BR, live Liv. area carport, bar, antique cabinets, dishwasher, all electric, well water, 300± sq. ft. finished, 1000 sq. ft. rear porch with office, pond & a 2-gallon public water, 5 miles out on back lot of Hwy. 69. This extra 100± ac. includes 2 1/2 ac. wooded, 3 BR, live Liv. area carport, bar, antique cabinets, dishwasher, all electric, well water, 300± sq. ft. finished, 1000 sq. ft. rear porch with office, pond & a 2-gallon public water, 5 miles out on back lot of Hwy. 69. This extra 100± ac. includes 2 1/2 ac. wooded, 3 BR, live Liv. area carport, bar, antique cabinets, dishwasher, all electric, well water, 300± sq. ft. finished, 1000 sq. ft. rear porch with office, pond & a 2-gallon public water, 5 miles out on back lot of Hwy. 69. This extra 100± ac. includes 2 1/2 ac. wooded, 3 BR, live Liv. area carport, bar, antique cabinets, dishwasher, all electric, well water, 300± sq. ft. finished, 1000 sq. ft. rear porch with office, pond & a 2-gallon public water, 5 miles out on back lot of Hwy. 69. This extra 100± ac. includes 2 1/2 ac. wooded, 3 BR, live Liv. area carport, bar, antique cabinets, dishwasher, all electric, well water, 300± sq. ft. finished, 1000 sq. ft. rear porch with office, pond & a 2-gallon public water, 5 miles out on back lot of Hwy. 69. This extra 100± ac. includes 2 1/2 ac. wooded, 3 BR, live Liv. area carport, bar, antique cabinets, dishwasher, all electric, well water, 300± sq. ft. finished, 1000 sq. ft. rear porch with office, pond & a 2-gallon public water, 5 miles out on back lot of Hwy. 69. This extra 100± ac. includes 2 1/2 ac. wooded, 3 BR, live Liv. area carport, bar, antique cabinets, dishwasher, all electric, well water, 300± sq. ft. finished, 1000 sq. ft. rear porch with office, pond & a 2-gallon public water, 5 miles out on back lot of Hwy. 69. This extra 100± ac. includes 2 1/2 ac. wooded, 3 BR, live Liv. area carport, bar, antique cabinets, dishwasher, all electric, well water, 300± sq. ft. finished, 1000 sq. ft. rear porch with office, pond & a 2-gallon public water, 5 miles out on back lot of Hwy. 69. This extra 100± ac. includes 2 1/2 ac. wooded, 3 BR, live Liv. area carport, bar, antique cabinets, dishwasher, all electric, well water, 300± sq. ft. finished, 1000 sq. ft. rear porch with office, pond & a 2-gallon public water, 5 miles out on back lot of Hwy. 69. This extra 100± ac. includes 2 1/2 ac. wooded, 3 BR, live Liv. area carport, bar, antique cabinets, dishwasher, all electric, well water, 300± sq. ft. finished, 1000 sq. ft. rear porch with office, pond & a 2-gallon public water, 5 miles out on back lot of Hwy. 69. This extra 100± ac. includes 2 1/2 ac. wooded, 3 BR, live Liv. area carport, bar, antique cabinets, dishwasher, all electric, well water, 300± sq. ft. finished, 1000 sq. ft. rear porch with office, pond & a 2-gallon public water, 5 miles out on back lot of Hwy. 69. This extra 100± ac. includes 2 1/2 ac. wooded, 3 BR, live Liv. area carport, bar, antique cabinets, dishwasher, all electric, well water, 300± sq. ft. finished, 1000 sq. ft. rear porch with office, pond & a 2-gallon public water, 5 miles out on back lot of Hwy. 69. This extra 100± ac. includes 2 1/2 ac. wooded, 3 BR, live Liv. area carport, bar, antique cabinets, dishwasher, all electric, well water, 300± sq. ft. finished, 1000 sq. ft. rear porch with office, pond & a 2-gallon public water, 5 miles out on back lot of Hwy. 69. This extra 100± ac. includes 2 1/2 ac. wooded, 3 BR, live Liv. area carport, bar, antique cabinets, dishwasher, all electric, well water, 300± sq. ft. finished, 1000 sq. ft. rear porch with office, pond & a 2-gallon public water, 5 miles out on back lot of Hwy. 69. This extra 100± ac. includes 2 1/2 ac. wooded, 3 BR, live Liv. area carport, bar, antique cabinets, dishwasher, all electric, well water, 300± sq. ft. finished, 1000 sq. ft. rear porch with office, pond & a 2-gallon public water, 5 miles out on back lot of Hwy. 69. This extra 100± ac. includes 2 1/2 ac. wooded, 3 BR, live Liv. area carport, bar, antique cabinets, dishwasher, all electric, well water, 300± sq. ft. finished, 1000 sq. ft. rear porch with office, pond & a 2-gallon public water, 5 miles out on back lot of Hwy. 69. This extra 100± ac. includes 2 1/2 ac. wooded, 3 BR, live Liv. area carport, bar, antique cabinets, dishwasher, all electric, well water, 300± sq. ft. finished, 1000 sq. ft. rear porch with office, pond & a 2-gallon public water, 5 miles out on back lot of Hwy. 69. This extra 100± ac. includes 2 1/2 ac. wooded, 3 BR, live Liv. area carport, bar, antique cabinets, dishwasher, all electric, well water, 300± sq. ft. finished, 1000 sq. ft. rear porch with office, pond & a 2-gallon public water, 5 miles out on back lot of Hwy. 69. This extra 100± ac. includes 2 1/2 ac. wooded, 3 BR, live Liv. area carport, bar, antique cabinets, dishwasher, all electric, well water, 300± sq. ft. finished, 1000 sq. ft. rear porch with office, pond & a 2-gallon public water, 5 miles out on back lot of Hwy. 69. This extra 100± ac. includes 2 1/2 ac. wooded, 3 BR, live Liv. area carport, bar, antique cabinets, dishwasher, all electric, well water, 300± sq. ft. finished, 1000 sq. ft. rear porch with office, pond & a 2-gallon public water, 5 miles out on back lot of Hwy. 69. This extra 100± ac. includes 2 1/2 ac. wooded, 3 BR, live Liv. area carport, bar, antique cabinets, dishwasher, all electric, well water, 300± sq. ft. finished, 1000 sq. ft. rear porch with office, pond & a 2-gallon public water, 5 miles out on back lot of Hwy. 69. This extra 100± ac. includes 2 1/2 ac. wooded, 3 BR, live Liv. area carport, bar, antique cabinets, dishwasher, all electric, well water, 300± sq. ft. finished, 1000 sq. ft. rear porch with office, pond & a 2-gallon public water, 5 miles out on back lot of Hwy. 69. This extra 100± ac. includes 2 1/2 ac. wooded, 3 BR, live Liv. area carport, bar, antique cabinets, dishwasher, all electric, well water, 300± sq. ft. finished, 1000 sq. ft. rear porch with office, pond & a 2-gallon public water, 5 miles out on back lot of Hwy. 69. This extra 100± ac. includes 2 1/2 ac. wooded, 3 BR, live Liv. area carport, bar, antique cabinets, dishwasher, all electric, well water, 300± sq. ft. finished, 1000 sq. ft. rear porch with office, pond & a 2-gallon public water, 5 miles out on back lot of Hwy. 69. This extra 100± ac. includes 2 1/2 ac. wooded, 3 BR, live Liv. area carport, bar, antique cabinets, dishwasher, all electric, well water, 300± sq. ft. finished, 1000 sq. ft. rear porch with office, pond & a 2-gallon public water, 5 miles out on back lot of Hwy. 69. This extra 100± ac. includes 2 1/2 ac. wooded, 3 BR, live Liv. area carport, bar, antique cabinets, dishwasher, all electric, well water, 300± sq. ft. finished, 1000 sq. ft. rear porch with office, pond & a 2-gallon public water, 5 miles out on back lot of Hwy. 69. This extra 100± ac. includes 2 1/2 ac. wooded, 3 BR, live Liv. area carport, bar, antique cabinets, dishwasher, all electric, well water, 300± sq. ft. finished, 1000 sq. ft. rear porch with office, pond & a 2-gallon public water, 5 miles out on back lot of Hwy. 69. This extra 100± ac. includes 2 1/2 ac. wooded, 3 BR, live Liv. area carport, bar, antique cabinets, dishwasher, all electric, well water, 300± sq. ft. finished, 1000 sq. ft. rear porch with office, pond & a 2-gallon public water, 5 miles out on back lot of Hwy. 69. This extra 100± ac. includes 2 1/2 ac. wooded, 3 BR, live Liv. area carport, bar, antique cabinets, dishwasher, all electric, well water, 300± sq. ft. finished, 1000 sq. ft. rear porch with office, pond & a 2-gallon public water, 5 miles out on back lot of Hwy. 69. This extra 100± ac. includes 2 1/2 ac. wooded, 3 BR, live Liv. area carport, bar, antique cabinets, dishwasher, all electric, well water, 300± sq. ft. finished, 1000 sq. ft. rear porch with office, pond & a 2-gallon public water, 5 miles out on back lot of Hwy. 69. This extra 100± ac. includes 2 1/2 ac. wooded, 3 BR, live Liv. area carport, bar, antique cabinets, dishwasher, all electric, well water, 300± sq. ft. finished, 1000 sq. ft. rear porch with office, pond & a 2-gallon public water, 5 miles out on back lot of Hwy. 69. This extra 100± ac. includes 2 1/2 ac. wooded, 3 BR, live Liv. area carport, bar, antique cabinets, dishwasher, all electric, well water, 300± sq. ft. finished, 1000 sq. ft. rear porch with office, pond & a 2-gallon public water, 5 miles out on back lot of Hwy. 69. This extra 100± ac. includes 2 1/2 ac. wooded, 3 BR, live Liv. area carport, bar, antique cabinets, dishwasher, all electric, well water, 300± sq. ft. finished, 1000 sq. ft. rear porch with office, pond & a 2-gallon public water, 5 miles out on back lot of Hwy. 69. This extra 100± ac. includes 2 1/2 ac. wooded, 3 BR, live Liv. area carport, bar, antique cabinets, dishwasher, all electric, well water, 300± sq. ft. finished, 1000 sq. ft. rear porch with office, pond & a 2-gallon public water, 5 miles out on back lot of Hwy. 69. This extra 100± ac. includes 2 1/2 ac. wooded, 3 BR, live Liv. area carport, bar, antique cabinets, dishwasher, all electric, well water, 300± sq. ft. finished, 1000 sq. ft. rear porch with office, pond & a 2-gallon public water, 5 miles out on back lot of Hwy. 69. This extra 100± ac. includes 2 1/2 ac. wooded, 3 BR, live Liv. area carport, bar, antique cabinets, dishwasher, all electric, well water, 300± sq. ft. finished, 1000 sq. ft. rear porch with office, pond & a 2-gallon public water, 5 miles out on back lot of Hwy. 69. This extra 100± ac. includes 2 1/2 ac. wooded, 3 BR, live Liv. area carport, bar, antique cabinets, dishwasher, all electric, well water, 300± sq. ft. finished, 1000 sq. ft. rear porch with office, pond & a 2-gallon public water, 5 miles out on back lot of Hwy. 69. This extra 100± ac. includes 2 1/2 ac. wooded, 3 BR, live Liv. area carport, bar, antique cabinets, dishwasher, all electric, well water, 300± sq. ft. finished, 1000 sq. ft. rear porch with office, pond & a 2-gallon public water, 5 miles out on back lot of Hwy. 69. This extra 100± ac. includes 2 1/2 ac. wooded, 3 BR, live Liv. area carport, bar, antique cabinets, dishwasher, all electric, well water, 300± sq. ft. finished, 1000 sq. ft. rear porch with office, pond & a 2-gallon public water, 5 miles out on back lot of Hwy. 69. This extra 100± ac. includes 2 1/2 ac. wooded, 3 BR, live Liv. area carport, bar, antique cabinets, dishwasher, all electric, well water, 300± sq. ft. finished, 1000 sq. ft. rear porch with office, pond & a 2-gallon public water, 5 miles out on back lot of Hwy. 69. This extra 100± ac. includes 2 1/2 ac. wooded, 3 BR, live Liv. area carport, bar, antique cabinets, dishwasher, all electric, well water, 300± sq. ft. finished, 1000 sq. ft. rear porch with office, pond & a 2-gallon public water, 5 miles out on back lot of Hwy. 69. This extra 100± ac. includes 2 1/2 ac. wooded, 3 BR, live Liv. area carport, bar, antique cabinets, dishwasher, all electric, well water, 300± sq. ft. finished, 1000 sq. ft. rear porch with office, pond & a 2-gallon public water, 5 miles out on back lot of Hwy. 69. This extra 100± ac. includes 2 1/2 ac. wooded, 3 BR, live Liv. area carport, bar, antique cabinets, dishwasher, all electric, well water, 300± sq. ft. finished, 1000 sq. ft. rear porch with office, pond & a 2-gallon public water, 5 miles out on back lot of Hwy. 69. This extra 100± ac. includes 2 1/2 ac. wooded, 3 BR, live Liv. area carport, bar, antique cabinets, dishwasher, all electric, well water, 300± sq. ft. finished, 1000 sq. ft. rear porch with office, pond & a 2-gallon public water, 5 miles out on back lot of Hwy. 69. This extra 100± ac. includes 2 1/2 ac. wooded, 3 BR, live Liv. area carport, bar, antique cabinets, dishwasher, all electric, well water, 300± sq. ft. finished, 1000 sq. ft. rear porch with office, pond & a 2-gallon public water, 5 miles out on back lot of Hwy. 69. This extra 100± ac. includes 2 1/2 ac. wooded, 3 BR, live Liv. area carport, bar, antique cabinets, dishwasher, all electric, well water, 300± sq. ft. finished, 1000 sq. ft. rear porch with office, pond & a 2-gallon public water, 5 miles out on back lot of Hwy. 69. This extra 100± ac. includes 2 1/2 ac. wooded, 3 BR, live Liv. area carport, bar, antique cabinets, dishwasher, all electric, well water, 300± sq. ft. finished, 1000 sq. ft. rear porch with office, pond & a 2-gallon public water, 5 miles out on back lot of Hwy. 69. This extra 100± ac. includes 2 1/2 ac. wooded, 3 BR, live Liv. area carport, bar, antique cabinets, dishwasher, all electric, well water, 300± sq. ft. finished, 1000 sq. ft. rear porch with office, pond & a 2-gallon public water, 5 miles out on back lot of Hwy. 69. This extra 100± ac. includes 2 1/2 ac. wooded, 3 BR, live Liv. area carport, bar, antique cabinets, dishwasher, all electric, well water, 300± sq. ft. finished, 1000 sq. ft. rear porch with office, pond & a 2-gallon public water, 5 miles out on back lot of Hwy. 69. This extra 100± ac. includes 2 1/2 ac. wooded, 3 BR, live Liv. area carport, bar, antique cabinets, dishwasher, all electric, well water, 300± sq. ft. finished, 1000 sq. ft.

NEUHOFF SLICED BACON
\$1.19
 12 OZ.

(10-12 LB.) SWIFTS BNLS ALL AMERICAN
HAMS \$1.99
 NORMEL FRANKS . LB. 89¢
 NORMEL COUNTRY SMO. SAUSAGE . LB. \$1.59
 RATH ASST. COLD CUTS 6 OZ. 59¢
 (YEARLING) LIVER . LB. 59¢
 CATFISH STEAKS . LB. 98¢

NOVEMBER 12-18 305 S. Magnolia, Woodville
BIG STAR
 CENTER CUT PORK **CHOPS \$1.19**
 QTR. SLICED PORK LOIN \$1.09
 LOIN END PORK ROAST \$1.29

PORCELAIN CHINA
SPECIAL THIS WEEK
 Fine Transfer in Porcelain China SAUCER only **49¢**
 200 FREE STAMPS W/PURCH. OF 4 LUNCH PLATES
 BIG STAR 11/18/75

TENDER WHITE MEAT (8-14) **TURKEYS . LB. 69¢**

(16-24 LB.) TENDER WHITE **TURKEYS . LB. 59¢**

ASST'D EL CHICO **DINNERS 12 OZ. 59¢**
 HYDE PARK **CORN ON COB 4 CT. 69¢**
 MISS SALLY STUF **CRABS 3 OZ. 4/\$1**
 KRAFT SINGLES **AM. CHEESE 6 OZ. 69¢**
 KRAFT SINGLES PIMENTO PR. CALF. **CHEESE 6 OZ. 69¢**
 SWIFT JACK FLAKY FLOWY S.M. OR B.M. **BISCUITS 10 CT. 2/69¢**
 WHIPPED PARKAY **MARGARINE . LB. 69¢**

ORANGE JUICE 5/\$1
59¢
 11 OZ.
49¢
 6.5 OZ.

LARSEN **VEG-ALL 16 OZ. 3/\$1**
 PRINCELLA CUT SWT. **POTATOES 31 OZ. 39¢**
 LIBBY **PUMPKIN 16 OZ. 3/\$1**
 HYDE PARK TOM. **SAUCE 8 OZ. 6/\$1**
 SWIFT PL. **CHILI 15 OZ. 59¢**
 SWIFT **CHILI W/BEANS 15 OZ. 49¢**
 HYDE PARK **EVAP. MILK 15 OZ. 29¢**
 JOHNSON DAYTIME **DIAPERS 24 CT. \$2.29**
 JOHNSON OVERNIGHT **DIAPER 18 CT. \$2.29**

WHIP. IMPERIAL **MARGARINE . LB. 69¢**
 KRAFT 1000 ISL. FRENCH **DRESSING 8 OZ. 49¢**
 DEL. MONTE **KETCHUP 38 OZ. 89¢**
 TOWIE **STUF OLIVES 7 OZ. 89¢**
 DANA PEACH **PRESERVES 32 OZ. 99¢**
 WARNER ORANGE **DRINK 64 OZ. 69¢**
 DEL. MONTE **GS CORN 16 OZ. 3/\$1**
 DEL. MONTE **WK CORN 16 OZ. 3/\$1**
 DEL. MONTE CUT GREEN **BEANS 16 OZ. 3/\$1**

MIRACLE WHIP **SALAD DRSG. 49¢**
 WITH THRIFTY SAVER BOOKLET

GRANULATED **SUGAR 5 LB. 69¢**
 WITH THRIFTY SAVER BOOKLET

THRIFTY SAVER SPECIAL **MARYLAND CLUB COFFEE 69¢**
 WITH FILLED THRIFTY SAVER BOOK

BONCO **SPAGHETTI 12 OZ. 39¢**
 ANGEL FLAKE **COCONUT 3 OZ. CAN 49¢**
 PAM **NO STICK 17 OZ. 99¢**
 DETERGENT **PUNCH 34 OZ. \$1.49**
 LIQ. DETER. **DYNAMO 22 OZ. 89¢**
 REG. & LEMON 48 OZ. **Crystal White 79¢**
 HYDE PARK ALUM. **FOIL 25 FT. 3/\$1**
 DELSEY ASST. **TISSUE 2 ROLL 49¢**
 KRAFT REG. 18 OZ. **Marshmallows 39¢**

U. S. NO. 1 **POTATOES 5 LB. BAG 59¢**
RUSSET

YELLOW ONIONS 3 LB. BAG 49¢
 TEXAS **ORANGES 5 LB. BAG 69¢**
 RED DELICIOUS **APPLES 3 LB. BAG 69¢**
 RUBY RED **Grapefruit 5 LB. BAG 69¢**
 OCEAN SPRAY **Granberries 59¢**

DRUGS
 ANTISPETIC **LISTERINE 7 OZ. 69¢**
 DENTURE TABLETS **EFFERDENT 60% \$1.59**
 TABLETS ALKA **SELTZER 25% 79¢**

close up 69¢
 4.6 OZ.

BACON FLAVOR BACOS 3 OZ. 59¢
 11-18-25
 BIG STAR STORES 11/18/75
 LIMIT 1 COUPON PER PURCHASE

TOTAL CEREAL 12 OZ. 69¢
 11-18-17
 BIG STAR STORES 11/18/75
 LIMIT 1 COUPON PER PURCHASE

BETTY CROCKER HAM BURGER Helper 2/99¢
 11-18-30
 BIG STAR STORES 11/18/75
 LIMIT 1 COUPON PER PURCHASE

GOLD MEDAL PL. FLOUR 5 LB. 79¢
 11-18-15
 BIG STAR STORES 11/18/75
 LIMIT 1 COUPON PER PURCHASE

BETTY CROCKER PIE CRUST Sticks 11 OZ. 2/89¢
 11-18-15
 BIG STAR STORES 11/18/75
 LIMIT 1 COUPON PER PURCHASE

