

Don't Miss the Lion's Club



# Rodeo



**Janet Martindale Shofner**  
of Jasper  
1975  
Rodeo  
Queen

Hoag & Sons Book Bindery Inc.  
Springport, Michigan 49284

# The Tyler County

# BOOSTER

18 Pages 3 Sections VOLUME 49 NUMBER 30  
WOODVILLE, TEXAS 75775 Thursday, July 22, 1976

## Commissioners Court

### County Judge Swings Tie Votes

WOODVILLE-Tyler County Judge Tom Dick Mann used his vote to break two deadlocks during the special Commissioners Court meeting Monday morning.

At issue in the two deadlocks were the division of funds between the four county precincts, and the rejection of bids for a new sheriff's car.

While discussing the planned use of a \$41,616 revenue sharing check, Precinct Three Commissioner Leon Fowler moved that county-wide funds be allocated according to a formula based on the road mileage in each precinct. The plan would give Precinct One, 12 percent; Precinct Two, 21 percent; Precinct Three, 33 percent and Precinct Four, 32 percent.

Under the existing system, money from ad valorem taxes and car registration had been split equally, with each precinct getting 25 percent.

"It would paralyze me bad," said Precinct Two Commissioner H.M. Parks. He added that he had to haul his materials just as far as the other precincts and had to buy new equipment with the money.

Fowler defended the plan, calling it "the only fair way". Precinct Four Commissioner Bo Jordan seconded the motion. Fowler and Jordan voted for it, with Parks and Precinct One Commissioner Joe Best opposing. Judge Mann then broke the tie by voting "for" the motion.

Parks followed with a motion that all bids paid jointly by the precincts be divided in the same manner. County Clerk Allen Sturrock said that few bills would come under the plan and gave the salary of the newly-hired county mechanic as one example.

The motion carried unanimously.

Judge Mann's second vote came near the close of the two and a half hour meeting after a recess for lunch. Before recessing, the court had tabled the opening of bids for a new sheriff's car, pending an inspection of the present car by the commissioners.

During the recess, several of the commissioners made an inspection of the car. When the court resumed, Commissioner Parks made a motion to reject the bids. The motion was seconded by Fowler. Commissioner Jordan expressed some doubts about rejecting the bids, saying that the sheriff had a job to

do, and he was not sure he could do it with the present car.

Parks and Fowler voted for the motion to reject the bids, while Jordan and Best opposed it. Judge Mann cast the deciding vote for rejection.

Previously, bids had been requested on repairs to the present car. These had ranged from approximately \$1700 to \$2000. In the meantime, the court ordered county mechanic Joe Marshall to repair the car so that it could pass state inspection. Cost of the repairs, as approved by the court Monday, was \$98.

In other business, the court heard S.E. Duff report on his committee's search for a dump site near Warren. He told the court he had contacted both Kirby Lumber and Southwest Timber, and that both companies were willing to help, but "would expect the cooperation of the commissioners."

The court approved \$596.68 for dues to the Deep East Texas Council of Governments and appointed County Treasurer Austin Fuller, District Clerk Pat Brown, County Clerk Allen Sturrock and Commissioner Bo Jordan to represent the county on the DETCOG Board.

Appointment of presiding judges for county-held elections was tabled by a motion from Commissioner Jordan.

The commissioners approved payment of \$7,067.

(Continued on page 3)



### 'Move Over John Wayne'

As a featured act of the Tyler County Lions Rodeo, Friday and Saturday, July 23 and 24, 1976, Earl Wharton will present his famous sheep dogs which pen and drive the sheep on command from Mr. Wharton.

Wharton has trained some of the top sheep dogs in America, and has won 36 championships including the American International Shepdog Trials.

Pictured above is "Wetback" a four pound monkey trained to ride the dogs while they perform their skills.

"Wetback and the dogs have performed at rodeos, fairs, horse shows and on television in over 40 states in the four Western Canadian provinces."

## About Bond Election

### League Questions School Board

WOODVILLE-Woodville Independent School District Superintendent Tom Linam handled a series of tough questions about the \$3.1 million bond election coming up on Sept. 28 at a meeting Monday night with the School Service League membership.

Questions dealing with tax valuation and what exact guarantees the voter would be given if the bond issue passes were some of the School Service League's inquiries of the board.

Linam told the group "You've just got to trust the men who are your trustees to do the best they can for the district. I already know they will," he said, "but you are the ones who've got to believe they're going to do the best job possible."

Linam listed the pro-

jects for the group which he said had been studied carefully "with respect to inflation" and indicated that the improvements, beginning with a new senior high school would probably fall under the \$3.1 million to be asked for in the election.

"But we have no way of guaranteeing that," Linam said, "in fact I don't know of anyone who could."

Linam indicated that current inflationary trends are showing a seven percent increase over the previous year, when the last district bond election was unsuccessful by a narrow margin.

"That means we're adding \$200,000 to the cost of the project, over the original \$2.9 million."

Linam told the group that "Uppermost in my mind is the danger I feel about the

possible loss of state accreditation." Linam said that he expects "A fine toothed comb" inspection in the next year or so by accreditation officials.

The district could not pass an accreditation visit

now," Linam said. He also said that a loss of accreditation would jeopardize state and federal funding possibilities for the district in the future.

"But the main thing is (Continued on page 3)

## Civic Center Pledges Pass \$6,000 Mark

WOODVILLE-Redoubling efforts to secure additional pledges toward the construction of a civic center for use by the entire county, Chamber of Commerce President Carl Nichols, acting on behalf of the Chamber, collected another 31 pledges at \$100 each, bringing the total thus far in two weeks of work on the project to \$6,200.

That amount equals about one-half of the dollars needed to build the foundation slab for the center.

Nichols idea, he says, "is to start from the ground up, and plan usage of the center so that pledgers and eventual contributors can get their money back on a totally reimbursable basis."

Nichols says that the project, "is particularly seeking pledges from individuals. Most of the local businesses and industries are the ones who are hit the hardest anyway. Individuals would better indicate a total, community, county-wide effort," he said.

"We have been offered pledges in amounts larger than \$100, but for the time

being, at least, we are accepting only in that amount."

Location of the proposed civic center is still an open question, but the majority seem to favor the Tyler County Airport vicinity because of its central location with respect to all of Tyler County. Nichols said further that the area also has a built-in recreational-entertainment atmosphere in its location next to the Hennigan Ball Park and the FFA Arena.

The size of the project will be determined by the dollar amount of pledges we receive, and the size we feel can be adequately equipped and supported by the community. However, we aim for something larger than any other meeting or activity place presently in Tyler County."

Nichols said the group would be organizing a committee of five citizens to evaluate suggestions, and recommend answers to the many detailed questions existing at this stage of the project.

The following is a complete list of 62 individuals and businesses which have

pledged \$100 each for the Civic Center Project:

FIRST WEEK

- Jo-Be Equipment
- Carl Nichols
- Griffin Pharmacy
- Austin Fuller
- Wood Fain
- Grady Holderman - Builder
- Realtor
- S.D. O'Brien
- Citizens State Bank
- Clemmons Insurance
- Max Graham-Exxon Agent
- Mr. and Mrs. Jimmy Wayne Nettles - Sears Catalog Store
- Clyde E. Gray - Heritage Garden Village
- White's Auto Store - Terry Wats
- J.B. Best & Co. - James Best
- J.B. White & Co. - Lawrence Upchurch
- Western Auto Assoc. - Jim Gaikey
- Jack Lane Ford
- A & M Motor Co.
- Tyler County Booster
- Dogwood Country Club & Recreational Resort
- A-E Project Management Services
- Jarratt Drugs

(Continued on page 3)

## This Weekend

### Rodeo Ready

#### East Texas Beauties Act As Duchesses

WOODVILLE-Boots, tall hats and big belt buckles will prevail on the scene in Tyler County this week as hundreds of fans and dozens of professional cowboys and cowgirls arrive to enjoy and to participate in the Fourth Annual Tyler County Lions Rodeo Club Rodeo, Friday and Saturday, July 23-24, at 8 p.m. both nights.

Beautiful queen contestants and Girl Rodeo Association barrel racers will mingle with hard muscled nomads of the professional rodeo circuit vying for top honors and top money in their respective events. Eager youngsters scrambling to bring a goat to the winners circle will receive coveted goat trophies. A mounted relay race between teams from the sponsoring Lions Clubs of Chester, Fred, Spurger and Woodville, promises to be a crowd pleaser and all of the faces of the team members will be familiar to the audience.

One of the most popular rodeo events of the northern and western circuits, but which is unfamiliar to our area, is called "heading and heeling" or, in short, "steer roping by a two-man team". For the first time the Lions Rodeo will offer this as a professional feature.

Bradford Ivy, of the Ivy Rodeo Company of Fairfield, produces most of the top shows in the Eastern part of Texas, and promises to bring his best stock.

Advance reserve seats and box seats from \$2.75 through \$4 and general admission at \$2.50 may be purchased at Perfecto Cleaners at 305 West Bluff St. A special advance ticket sale table will be provided at Citizens State Bank, Woodville, Texas, all this week. Also, many of the top contenders on the professional rodeo circuit will be in attendance.

The A-H & FFA Arena facility, one mile west of Woodville, will offer "excellent food and drink", and fans can eat their evening meal at the rodeo.

Many beautiful young ladies of East Texas will be riding in the Tyler County Lions Rodeo this weekend, seeking to be named the Sweetheart for 1976 to replace reigning Queen Janet Martindale Shofner.

The young ladies will be presented Friday night, and will be judged at 2 p.m. Saturday. The Queen will be named at the Saturday evening performance.

Following the judging Saturday afternoon the duchesses, their parents, the presidents of the Tyler County Lions Clubs and their wives will be entertained at a reception at the home of Max and Joan Graham.

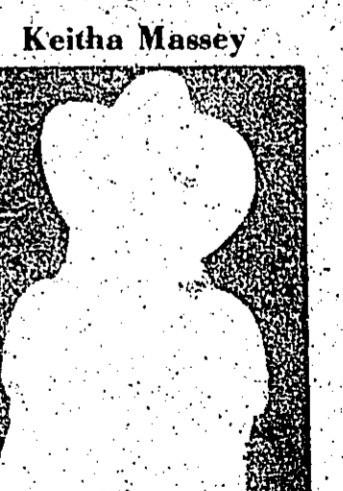
The queen and the first runner-up will be presented with lovely trophies and all of the young ladies will receive a handsome charm as a memento of their visit to Tyler County.

Duchesses competing for the title are Betty Joe Allen of Jasper, daughter

of Mr. and Mrs. Dick Allen and sponsored by Beta Sigma Phi; Tami Bullock of Corrigan daughter of Mr. and Mrs. C.B. Bullock Jr., sponsored by the Corrigan Lions Club; and Lorene Findlater of Beaumont, sponsored by the South Beaumont Lions Club.

Also, Bonnie Rhodes of Warren, daughter of Mrs. Mae Rhodes, sponsored by the Fred Lions Club.

Also competing are Keitha Massey, daughter of Mr. and Mrs. George H. Massey of Jasper, sponsored by the Woodville Lions Club; Bonnie Gay Nowlin of Spurger, daughter of Mr. and Mrs. Billy Nowlin, sponsored by the Spurger Lions Club; Johanna Rice, daughter of Mr. and Mrs. W.B. Rice of Warren, sponsored by the Fred Volunteer Fire Department; and Carole Spurlock, daughter of Mr. and Mrs. James L. Spurlock of Port Arthur, sponsored by the North Port Arthur Lions Club.



Betty Joe Allen

Tami Bullock

Lorene Findlater

Keitha Massey

Bonnie Gay Nowlin

Johanna Rice

Carole Spurlock

Bonnie Rhodes



Service League Members Meet Monday

### Folklife Festival Aug. 5-8 In San Antonio

SAN ANTONIO—City youngsters can follow in the footsteps of yesterday's children when they take the open "Tom" and "Jerry" at the Folklife Festival, Aug. 5-8 in San Antonio. Woodville's Jeffery Holmes and his associate Paul Walter will bring the two giant "bovines" to the Festival, giving young visitors the chance to get to know the beasts and clamber on an unforgettable ride.

### Mann's Chapel Revival July 24 - 30

COLMESNEIL—Mann's Chapel Independent Congregational Methodist Church will begin revival services Saturday, July 24, at 7:30 p.m. The revival will continue through Friday, July 30.

on for an unforgettable ride. This event is part of the Festival's sights and sounds on view in August. The Folklife Festival is a multi-cultural celebration of Texas, Texan Cultures, located in HemisFair Plaza. Advance tickets are on sale now at the Institute at \$2 per adult and 50 cents for children under 12. At the gate, this price rises to \$2.50 per adult and 50 cents for children under 12.

### 25 Years Celebrated

WOODVILLE—Mr. and Mrs. E.M. Pitts Jr. of Woodville celebrated their 25th wedding anniversary Wednesday, July 21.

### PINES THEATRE DOWNTOWN WOODVILLE

ENDS THURSDAY AT THE EARTH'S CORE FRIDAY - SATURDAY July 23 - 24

Walt Disney's Ride a Wild Pony Technicolor

Walt Disney's DUMBO

SUN - MON - TUE - WED July 25 - 26 - 27 - 28

The finest action movie you may ever see... The Oakland Tribune



Klieth Merrill's the Great American Cowboy

### The Tyler County BOOSTER

JOHN F. MORRISON... Publisher & Editor GAIL MORRISON... Business Manager JOHN SNIPPER... Reporter ERNESTINE FAIRCLOTH... Typesetter

MEMBER TEXAS PRESS ASSOCIATION



### Engagement Announced

Mr. and Mrs. Tom P. Linn announced the engagement and approaching marriage of their daughter, Linda Linn Bramblett to Chris Lyle James, son of Mr. and Mrs. Lyle R. James, 203 Sartle Drive, Springdale, Arkansas.

### Revival At Caney Creek Baptist Church July 26 - August 1

CHESTER—A revival is scheduled for July 26 through August 1 at the Caney Creek Baptist Church in Chester, with services beginning at 7:30 p.m. each evening.

### MHMR Has New Service Unit

WOODVILLE—Judge Tom D. Mann, board member of the Tyler County Regional Mental Health Mental Retardation Services (DETRMHMRS) representing Tyler County, has announced a new service available to Tyler County citizens.

### Judge Mann Shown with New MHMR Mobile Unit

The purpose of the Mobile Evaluation Unit is to identify and evaluate the mentally retarded, cerebral palsied, developmentally disabled, and the autistic. It is staffed by a psychologist and social worker.

### Reunion Set For Aug. 1

The Davis-Worthern Reunion has been set for the first Sunday in August.

### First Baptist Doucette Plans Bible School

DOUCETTE—The First Baptist Church of Doucette will kick-off its Vacation Bible School with a hayride and ice cream supper Saturday, July 24 at 6 p.m.

Bob's Prescription Shop advertisement featuring a cartoon character and contact information: 1010 W. Bluff, Woodville, TX 75372.

SCHOOL BELLS are Ringing! Only 4 weeks till School Starts. LAY AWAY School Clothing NOW.

Blue Denim JEANS Levi's Sedgfield Farah Mann Maverick

Best = G On Sale Now Boy's & Men's Short Sleeve Shirts

### TRAIN FOR A FUTURE!

Be a Dairy Queen Manager Somewhere in the EAST TEXAS VICINITY Hospitalization Insurance \$9,600 to \$12,000 First Year No Experience Necessary

Apply by calling the Dairy Queen office in Crockett. Call collect, area code 713 544-2218



### Mrs. Gary Steves

Miss Susan Spurlock and Gary Burdett Steves were married on Saturday, July 17, 1976 in a candlelight ceremony at Nichols Hills Baptist Church, Oklahoma City, Oklahoma.

### League Meets With Board

(Continued from page 1) that people would just be ashamed to lose their academic standing in the educational community which would make it harder for a Woodville student to enter the college of his or her choice without special tests.

### Kirby Band Schedules Rehearsals

WOODVILLE—Rehearsals for the Kirby High School Band will begin Saturday, August 2, from 6:30 to 8:30 p.m.

### SCHOOL DAYS COUNT DOWN

4 weeks to go!

### Judge Swings Votes

(Continued from page 1) In matching funds to Mental Health—Mental Retardation for an outreach clinic at the Woodville MFM-R School.

### Civic Center Pledges

(Continued from page 1) East Texas Land James A. Clark Bob's Prescription Shop James H. Dillon - Attorney South East Texas Savings & Loan

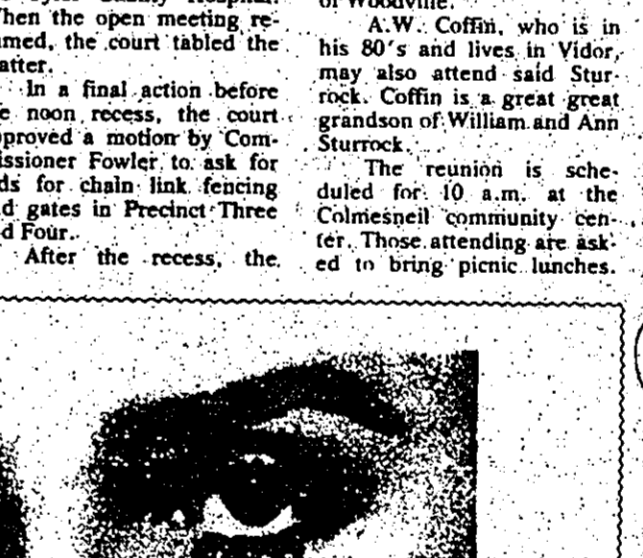
### Wedding Planned

Mrs. Annie Bell Blue of Doucette, Texas is pleased to announce the approaching marriage of her daughter Gertrude Mae to Mr. Donald Ray Brooks, son of Mrs. Thelma Scott of Doucette.

### Sturrock Decendants To Meet

COLMESNEIL—As the descendants of William and Ann Swann Sturrock meet in reunion Saturday, July 24, the oldest surviving members of the family may be present.

### Lipstick



### LATE SHOW

FRIDAY and SATURDAY PINES... 10:30p.m.



### Sniffen Around

That thing that everyone talks about, but can't do anything about has been noticed lately. The weather in Tyler County has been, needless to say, WET.

### Don't Duck Issues

The county commissioners may have come up with a solution to the rain problem. Following the wise system they set up Monday, the rain should be allocated to the precincts on a percentage basis.

### GENERAL ELECTRIC SALE OF CHAMPIONS

Have a supermarket with this food freezer! 2 sliding baskets, vertical divider. Adjustable temperature control.

### Dairy Queen

SPECIAL Country Basket \$1.19 \$1.29

### FOOD FOR THE FAMILY

Call In Your Order PHONE 283-2584 1308 W. BLUFF WOODVILLE

### Birth Announcement

WOODVILLE—Mr. and Mrs. East Ewing of Woodville are the proud grandparents of a baby girl born to Michael and Sherry Lynn Hogan in Naples, Italy.

### Read the thrilling book at your favorite book store

Ode To Billy Joe advertisement with a picture of a man and the text 'SEE THE MOVIE! PINES July 29 thru Aug 4'

### Wilson's Certified BACON

Wilson's Certified Bacon advertisement with a picture of a ham and the price \$1.79 lb.

### Wilson's Certified WEINERS

Wilson's Certified Weiners advertisement with a picture of a hot dog and the price 79¢ 1.2 oz.

### Dairy Queen SPECIAL

July 23, 24 & 25 SPECIAL Country Basket \$1.19 \$1.29

### FOOD FOR THE FAMILY

Call In Your Order PHONE 283-2584 1308 W. BLUFF WOODVILLE

### IRS Exam Date Set

AUSTIN-The Internal Revenue Service said today that applications for the IRS Special Enrollment Examination must be in the mail and postmarked by August 15.

The exam qualifies tax practitioners who are neither Certified Public Accountants nor accredited attorneys to represent clients before the federal tax agency. It will be given September 27 and 28 in Austin, Dallas, Houston and Lubbock.

Persons desiring an application or additional information about the examination in Austin and Houston should contact the Chief, Training Branch, Internal Revenue Service, 300 East 8th Street, Room 401, Austin, Texas 78701.

A \$25 examination fee, payable to the IRS, must accompany the application along with a photo of the applicant. It is not a test for IRS employment.

### Jury List Released For July 26

Patricia Brown, District Clerk, released the following names of persons that are to appear July 26, 1976 at 9 a.m. in the District Courtroom for the 88th Judicial District Court with Judge Clyde E. Smith, Jr. presiding.

List No. 3 of the Petit Jurors drawn on the 20th day of May, 1976, in the District Court of Tyler County, Texas:

Skinner, Earlon Wade; Maloney, Robert V.; Bean, Erma; Pruzek, S.J.; Crosby, Bernice; Cates, E.L.; Bain, James Jr.; Beatty, Gussie; Nell, Smily; Jack, Mrs.; and Williams, Florence M.; Phillips, J.H.; Beane, Cornelius B.; Dodd, E.E.; Fry, Bevy; J., Mahaw, Roy M.; Rickett, William Daniel; Lemon, J.A.; Wilson, Mary E.; Voth, Hardy Kyle Jr.; Myrtle, Elmer H.; Calloway, R.A.; Hurst, Judith; Crawford, Arthur; Eades, Mary Virginia; Hargett, Gertrude; Richardson, Frank M.; Beisell, Dorothy C.; Sheffield, Donald W.; and Dickens, E.N. Mrs. and West, Lou Eddie; Barlow, Oliver; Sheffield, Grace; Cook, Ivy Jo; Moore, Dennis; Layton, Roy; Urbansky, Oswald; Seaman, H.O. Mrs.; Sawyer, John; and Russell, Robert E.

**LOW, LOW PRICE!**  
SHOWBOAT PORK & BEANS  
**51**  
300 CAN  
PLUS **37** STAMPS

**LOW, LOW PRICE!**  
KRAFT WHIPPED MARGARINE  
PARKAY  
6-STICK PKG.  
**49**  
PLUS **37** STAMPS

**LOW, LOW PRICE!**  
LITE FLUFF CANNED BISCUITS  
CANS 10  
BUTTERMILK OR REGULAR  
**10**  
PLUS **37** STAMPS

**LOW, LOW PRICE!**  
POWDERED DETERGENT FAMILY SIZE  
Tide  
40' Oz. Reg. Price \$4.77  
**389**  
PLUS **37** STAMPS

**LOW, LOW PRICE!**  
GOLD MEDAL FLOUR  
5 LB. BAG WITH 7.50 PURCHASE  
**69**  
PLUS **37** STAMPS

**LOW, LOW PRICE!**  
STAR KIST CHUNK TUNA  
6 1/2 OZ. CAN  
**59**  
PLUS **37** STAMPS

**LOW, LOW PRICE!**  
WILSON BIG EYE QUARTERS SLICED PORK LOIN  
**1.09**  
PLUS **37** STAMPS

**Unbeatable meats**  
Wilson Whole Boneless Packer Trim Beef  
**BRISKET LB. 89**  
Wilson Certified All Meat WEINERS 79¢  
Wilson Certified Sliced Pork Chops LB. \$1.79  
Wilson Big Eye Center Cut Rib Pork Chops LB. \$1.69  
Wilson Big Eye Breakfast Cut Pork Chops LB. \$1.89  
Wilson Certified Sliced Bacon LB. \$1.79  
Wilson Tender Made B.N.L.S. Hams \$2.59  
Wilson Jumbo Chunk (sliced LB. 98") Bologna 89¢  
Wilson Round or Square VARIETY PACK 12 OZ. PKG. \$1.39

**Unbeatable produce**  
Tree Ripe PEACHES **29**¢  
Watermelons **99**¢  
25 LBS. and Up  
SWEET YELLOW Onions LB. 15¢  
VINE PINK Tomatoes LB. 33¢  
FRESH RED Radishes 2/25¢  
6 OZ. BAGS

**LOW, LOW PRICE!**  
LIQUID DETERGENT  
IVORY  
22 OZ. BOTTLE  
**69**¢  
PLUS **37** STAMPS

**LOW, LOW PRICE!**  
USDA GRADE A LB. WHOLE FRYERS  
**45**  
PLUS **37** STAMPS

**CHEESE \$1.09**  
Kraft American or Pimento Singles  
Kraft Colby or Cheddar Half Moon  
Carlton Pork & Beef Ring Sausage LB. \$1.69  
Armour Star Grade A Hen Turkeys LB. 59¢  
Brookshire Bros. Canned Hams 3 LB. \$5.79  
Brookshire Bros. Smoked TURKEYS LB. \$1.19  
Armour Country Brand Ham 12 OZ. \$2.39  
Armour Cov. Smoked Sausage LB. \$1.59  
Armour Cov. Salt Bacon Chunks LB. \$1.29

**Unbeatable frozen foods**  
BANQUET MEAT  
PIES 4 8 OZ. \$1.00  
Chicken Turkey Beef  
Shrimp Sticks 9 OZ. PKG. \$1.29  
Pinto Beans 16 OZ. PKG. 59¢  
Lemonade 12 OZ. PKG. 49¢  
French Fries 4 LB. BAG \$1.19

**LOW, LOW PRICE!**  
PRINCELLA CUT YAMS  
NO. 2'S Cans  
**39**¢  
PLUS **37** STAMPS

**FROM OUR BAKERY**  
OVEN PRIDE SLICED WHITE BREAD 49¢  
Oven Pride Hamb. or Hot Dog Buns 49¢  
Oven Pride Brown N Serve Rolls PKG. 49¢

**FROM OUR DAIRY**  
Bordens 12 oz. CTN. Cottage Cheese 49¢  
Bordens Swiss Style YOGURT 4 8 oz. 99¢  
Deodorant Soap Bath Size Bars ZEST 2 For 65¢

**LOW, LOW PRICE!**  
HY-TOP SUGAR **89**¢  
5 LB. With 7.50 Purchase  
PLUS **37** STAMPS

**LOW, LOW PRICE!**  
Brookshire Grade A Medium EGGS **59**¢  
Dozen  
PLUS **37** STAMPS

**TOWELS 55**¢  
Bounty Paper Big Rolls  
Tomato Ketchup 14 Oz. BTL. 43¢  
Mop & Glo 48 OZ. Size \$2.29  
Hefty Super Weight Bags PKG. 5 Bags \$1.69  
Insect Repellent Raid Solid Can \$1.99  
Raid Flying Insect Killer 12 1/2 Oz. Can \$1.59  
Underwood Roast Beef or Deviled Ham Meat Spreads 4 1/2 Oz. Can 55¢  
Hershey's Instant Cocoa Mix 2 LB. \$1.83  
Lysol Basin with Pump Tub & Tile Cleaner 17 Oz. \$1.05  
Crunchola Granola Snacks 8 1/2 Oz. 95¢

**MILK 31**¢  
Pet Evaporated Tall Can  
Dill Pickles 2 16 Oz. Jar 99¢  
Pickles Quart Jar 79¢  
Fruit Drink 46 OZ. ASSTD. 49¢  
Salad Dressing Quart Jar 69¢  
Catsup 14 OZ. Bottle 39¢  
Baby Food Fruits-Veg. Desserts 2/31¢  
Evaporated Milk Tall Can 31¢  
Regular Foil 12" X25" Roll 35¢  
Dog Food 6 15 oz. Cans \$1.00

**HEALTH & BEAUTY AIDS**  
Anti-Perspirant Deodorant DIAL 5 oz. Aerosol Reg. 1.19 89¢  
Cold Tablets 24 Pkg. \$1.59  
Aspirin Box 37¢

**Disposable DIAPERS \$1.49**  
Pampers

**LOW, LOW PRICE!**  
SUGAR **89**¢  
5 LB. With 7.50 Purchase  
PLUS **37** STAMPS

**LOW, LOW PRICE!**  
EGGS **59**¢  
Dozen  
PLUS **37** STAMPS

**COUPON**  
REDEEM THIS COUPON FOR 50 EXTRA STAMPS - One Per Family  
With Purchase of \$5.00 or More (Excluding Cigarettes)  
Coupon Expires July 27, 1976

**COUPON**  
REDEEM THIS COUPON FOR 50 FREE STAMPS  
With Purchase of General Mills 15 OZ. PKG. CHEERIOS  
Coupon Expires July 27, 1976

Henardling, Harold B.; Mobley, Grady E.; Miller, Linda S. Mrs.; Sheffield, Wandie Mrs.; Smith, John M. Mrs.; Smith, Eddis E. Mrs.; Smart, P.O.; Spivey, Mary Ann; and Smith, Wilma Ray; Stanford, Ruthie Lee; Sparlock, Shirley; Willingham, W.T. Mrs.; Sapp, Ausie; Swearingin, Ruth; Summers, Wilma O.; Stubblefield, Mary E.; Stewart, Carlton; Holmes, Jim P.; and Odum, Bernice Mrs.; Reynolds, G.A. Mrs.; Holler, Jerry L.; Broom, Tommy; Miller, Albert Lee; Wise, Peggy A.; Payne, Julian F.; Rawls, Harrison; Spears, Mable; Evans, Mary Hope; and Boling, James A.; Tawn, Gerald I.; Conner, Bruce E. Jr.; Moss, Anna; Fry, Ozello; Mason, Eileen H.; Hartwick, Gay Nell; Dill, Elsie; Dancer, Garces; Holtby, W.R.; and Crawford, Mary F.; Pope, Raymond M. Mrs.; Ellis, Richard; Crews, T.F.; Milyard, Pierce F.; Irvine, Beatrice; Humphreys, W.H.; Poladarter, Eva; Fry, W.E.; Stanford, James; and Ellington, Delphia; Harris, James H.; Herington, H.R.; Fottenberg, C.P.; Crosby, C.T.; Jackson, Edie C.; Hutto, Barbara; Frank, Ella R.; Mock, C.E. Sr.; Moore, J.R.; and Davis, Lillian P. Mrs.

Jack M. Yandell; K. Vanvaltenburg; John Wiley Pierce; Charles Box Jelen; Catherine Barnes; Charles Duff; Dennis W. Carter; Lenno E. Harts; Jerry Furworth; Kay, Wilma Marie; Bonnie Kirkland; Gerald N. Ponder

### Public Notices

**NOTICE TO ALL PERSONS HAVING CLAIMS AGAINST THE ESTATE OF JOHN ROBERT COATS, SR. DECEASED.**  
Notice is hereby given that original letters testamentary for the Estate of John Robert Coats, Sr., Deceased, were issued on July 12, 1976, in Cause No. 5056, pending in the County Court of Tyler County, Texas, to JOHN ROBERT COATS, JR., the residence of such Executor is Travis County, Texas. The post office address is: C/O James M. Allison Attorney at Law 409 South Magnolia Woodville, Texas 75797

All persons having claims against this Estate which is currently being administered are required to present them within the time and in the manner prescribed by law. DATED the 13th day of July, 1976. James M. Allison Attorney for the Estate 30-1tc

**STATE OF TEXAS TO WHOM IT MAY CONCERN:**  
YOU ARE HEREBY COMMANDED to appear and answer before the Honorable DISTRICT COURT, 88th Judicial District, Tyler County, Texas, at the Court-house of said county in Woodville, Texas, at or before 10 o'clock a.m. of the Monday next after the expiration of 20 days from the date of service of this citation, then and there to answer the petition of William Rogers Whittlesy and his wife, Beverly Sue Whittlesley, Petitioners, filed in said Court on the 13th day of July, 1976, against unknown Respondent, and said suit being number 9768 on the docket of said Court and entitled "In the Interest of a Child", the nature of which suit is to request the termination of the parent-child relationship, said child was born the 4th day of September, 1972, in Woodville, Texas.

The Court has authority in this suit to enter judgment or decree in the child's interest which will be binding upon you, including the termination of the parent-child relationship, the appointment of a conservator with authority to consent to the child's adoption. Issued and given under my hand and seal of said Court at Woodville, Texas, this 13th day of July, 1976. Patricia Brown Clerk of the District Court of Tyler County, Texas 30-1tc

**SHERIFFS SALE:**  
RE: Cause No. 9657, R.B. Kelly et al. vs. Ella Gore Tyler County.  
On the 5th day of May, 1976, a Judgment was entered in the above entitled and numbered cause in the District Court wherein R.B. Kelly, Cleo Burgess and Mrs. Ella Kelly recovered the amount of \$665.29. The Court ordered that the lien against a lot in Barlow Lake Estates be foreclosed and that the lot be sold to satisfy this indebtedness. The sale will be held on the first Tuesday of September, 1976, being September 7, between the hours of 10:00 o'clock a.m. and 4:00 o'clock p.m.  
All of Lot 48, in Section No. 1 of the BARLOW LAKE ESTATES, Subdivision in Tyler County, Texas, as same is described in Plat of Record of said Subdivision in Vol. 113, Plat File, of the Plat Record of Tyler County, Texas. Said tract of land being out of and a part of the ROBERT CONN SURVEY, Abt. No. A-175, Tyler County, Texas. This deed is made in accordance to all reservations, conditions and restrictions of record affecting said land.

**Brookshire Bros. THE BEST FOR LESS**

FOR YOUR SHOPPING CONVENIENCE WE ARE OPEN 7:30AM UNTIL 8PM (CLOSED ON SUNDAY)

THE WORD "WORTH" ORIGINALLY MEANS "WORTH HUNTING"

# Rodeo Pros Here Friday, Saturday

**CART AWAY FOOD Grammer's SAVINGS From Grocery**

283-2520 Woodville, Texas 1403 W. Bluff

JULY 22 - 23 - 24	
Pepperidge Farm Turnovers.....	69¢
#8 Bag Potatoes.....	99¢
Lettuce...head.....	29¢
Cabbage...lb.....	15¢
Kraft 1000 Island Dres.....	55¢
Pt. Griffin Sandwich Spread.....	49¢
#1 Maxwell House Coffee.....	\$1.77
28 oz. Comet Rice.....	89¢
Pillsbury Hot Roll Mix.....	61¢
16 oz. Hungry Jack Pan Cake Mix.....	49¢
16 oz. Wesson Oil.....	59¢
#1 Small White Beans.....	47¢
14 oz. Snow Flake Coconut.....	85¢
8 oz. Hershey's Cocoa.....	71¢
24 oz. Austex Beef Stew.....	91¢

## MEATS

Tuna Twist.....	47¢
Parade Green Beans.....	19¢
17 oz. Del Monte Cream Style Corn.....	39¢
2 Roll Aurora Tissue.....	47¢
D.H. White Cake Mix.....	75¢
Center Cut Pork Chops...lb.....	\$1.59
Sliced Slab Bacon...lb.....	\$1.49
Rinseless Sliced Bacon...lb.....	\$1.59
T-Bone Steak...lb.....	\$1.49
Round Steak...lb.....	\$1.39
Chuck Steak...lb.....	89¢
Pic-Nic Hams...lb.....	79¢
3# Ground Meat.....	\$2.97
Fryers...lb.....	47¢
ZUMMO Bologna...lb.....	89¢



Warrens Deborah Gore Gore Places 1st in AAU Meet

WARREN'S Deborah Gore, 11, of Warren, Texas, won first place in the AAU National Championship in the 11-year-old girls' division at the National Finals Rodeo in Denver, Colorado, Sunday.

Gore, who is America's original sport, with its heritage reaching back to the great cattle drives of a hundred years ago, won today pay their own rodeo entry fees and travel expenses, and receive only what money they're skilled or lucky enough to win in the arena.

Top hands, sometimes compete in 150 or more rodeos a year, with prize money upwards of \$30,000. The two reigning world champions are the 1975 winners, Tom Ferguson of Miami, Okla., and Leo Camarillo of Oakdale, Calif., both won more than \$50,000 in the arena last year. Ferguson is the leading winner this season, midway through 1976 he has already won more than \$40,000.

He may wind up the top winner for the year, but to win the third all-around world championship he'll have to start all over at the National Finals Rodeo in October. Ferguson and the other top 15 winners in each event will start with a clean winnings sheet at the Finals this year. World titles will go to the top PRF winners in each event, but the big winners from the regular season.

The PRCA sanctions some 600 rodeos annually including the Finals. Total prize money for 1976 is expected to top the record \$5.4 million won at last year's rodeo. The Association has more than 2,500 members as well as several thousand "permit-holders" who compete at many of the rodeos trying to win the mandatory \$1,000 necessary for full membership.

The Bradford Fry Rodeo Company of Fairfield, Texas will produce the Woodville rodeo.

# National League Edges American In Playoff Action

WOODVILLE-The National Little League All-Stars edged the American League All Stars 2-1 in a major league playoff action Monday night at Hennigan Field.

The close, well-played game was scoreless through the first three innings, as Nationals' starting pitcher Derrick Brooks and American starter Eldon Poncho dueled.

A home run by third baseman Lester Battise in the top of the fourth inning put the American All Stars out in front, but it was the only run they could muster for the evening.

The Nationals tied the score and moved out in front in their half of the fourth.

First baseman James Watts doubled and was driven in by centerfielder Chuck Thornton's single. Catcher Trey Allison then singled, bringing in Thornton, and the Nationals had all the runs they needed.

Brooks was the winning pitcher for the Nationals, going all five innings, striking out five and giving up just three hits and no walks.

Poncho, the losing pitcher, was relieved in the fourth by Dan Wise, who pitched the last two innings. The American League pitchers gave up five hits and three walks, while striking out five batters.

Third baseman Robert Cunnigan led the Nationals with two hits.

The Nationals, coached by James Watts Sr., will face the Liberty National League All Stars Monday, July 26, at 8 p.m. at Hennigan Field.

AMERICAN ALL STARS 000 100 - 1  
NATIONAL ALL STARS 000 200 - 2

# Turkeys Stocked In East Texas Pineywoods

TYLER-Some 225 eastern turkeys, representing nearly one-quarter of the total projected to be stocked, have been released in the pineywoods of East Texas.

Stocking of the occupant turkeys will continue through the fall, with 1,000 birds to be released, according to Robert Van Cleave, Texas Parks and Wildlife Department regional wildlife director.

"We have been releasing birds on a weekly basis as they turn 14 weeks old," said Van Cleave. "A majority of the birds have been pen-reared, but a few have been wild-trapped," Van Cleave noted. It has been determined that at 14 weeks of age the turkeys are better prepared to survive and grow in the wild. At that age, the birds are approximately three-fourths grown.

"Birds younger than 14 or 15 weeks are too small and subject to much heavier predation." All the released birds will be introduced into East Texas areas that have 40 inches or more of rainfall yearly.

The birds are released on a two-to-one-gobbler ratio. Biologists estimate those turkeys that survive will be ready to breed next spring.

# TC Seniors Remain Unbeaten in District Play

by Roger Reese

The Tyler County Senior All-Stars remained unbeaten in District 12 tournament play Monday night, with an 8-3 victory over Silbee. The victory qualified the team for a Tuesday evening show-down with the Amelia All Stars from Beaumont.

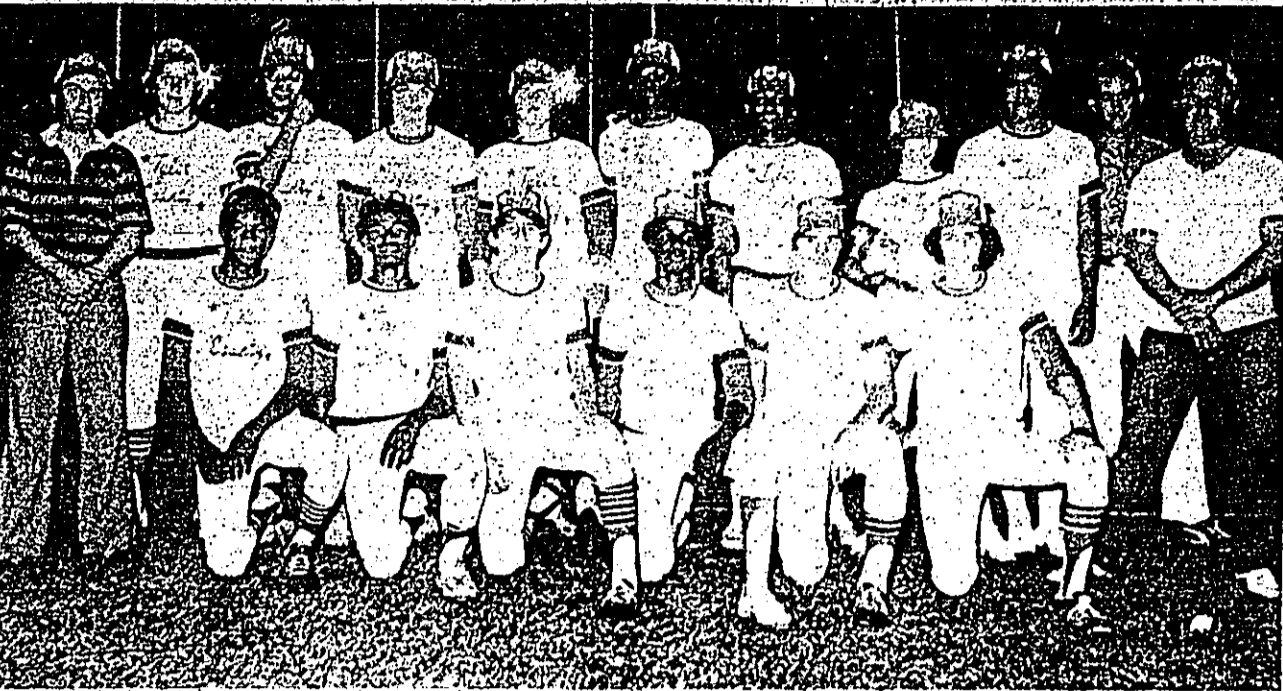
In the game Monday night, Tyler County jumped on the Silbee starting pitcher for eight runs in the first two innings. Garrett Battise led off the first with a single, Gerald Dill then drew a walk, and Kevin Battise reached first on a fielder's choice when Silbee failed to get Dill out at second.

With the bases loaded, G. Battise scored on a passed ball. Dill was balked home, and K. Battise was brought home by Michael Bass who scored a double down the right field line.

In the second inning John Menace struck out three batters, stole second and third.

Curtis Pittman handled the mound duties for TC allowing two hits while walking five and striking out ten. The only time Pittman was in any real trouble was in the fourth inning, when Hardin-Jefferson scored its three runs.

Arnie Aleda led off the inning with a walk, Skip Jackson then doubled with Arena going to third. Pittman got Anderson on strikes, but gave up a single to Boz which scored two runs. Barron then bounced out pitcher to first for the second out. An error led to the third run of the inning. Pittman struck out Blanchett for the third out.



Elated Tyler County All-Stars Pose Following Mondays' Game

# Twirling Tournament Coming Up

BEAUMONT-The Beaumont Twirling Academy is sponsoring a twirling tournament this Saturday, July 24, at the South Texas Fairgrounds in Beaumont, beginning at 9 a.m.

All twirlers are invited to enter the tournament, according to Director/Instructor Rita Condon. A five-foot tall trophy will be awarded to the champion twirler of the meet.

For further information contact the Academy at 833-8358.

# Bass Program Said Growing

AUSTIN-Texas' striped bass program continues to grow more successful each year as hatchery personnel and fisheries technicians gain experience in rearing and stocking the Texas Parks and Wildlife Department.

By the end of June, P&WD fisheries workers had reared and stocked some 1.3 million two-inch strippers in 10 inland lakes and San Antonio Bay.

P&WD fish culturists Charles Gray of Fort Worth said he has accumulated "50 pounds of information" on the culture of striped bass in the past year.

"Weather was cooperative in 1976," said Gray, "and we have learned more about how to handle delicate striped bass fry, feeding and other aspects of rearing a saltwater fish in freshwater hatcheries."

Striped bass are anadromous, that is, they normally live in salt water but ascend rivers to spawn in fresh water. They are prized to be highly successful.

"We received three million tiny striped bass from the federal hatchery in South Carolina," said Gray. "The bulk of production came from adult fish in two Texas lakes, Spencer north of San Angelo and Toledo Bend on the Louisiana border."

Fry were reared at the DuDette, Possum Kingdom, San Angelo Numbers One and

WHY BUY A PROPANE TANK WHEN YOU CAN RENT ONE?

Get PARGAS

- \* No Paintings Worries
- \* No Maintenance Worries
- \* No Moving Worries

311 S. Magnolia Woodville Phone 283-2578

Heel molded counters

RIDE EASY ON YOUR FEET

RED WING

Best = G

Best = G

Rodeo Time

Cowboy Boots

by Nacona

Tony Lama

Texas Brand

Jeans

by Levi

Sedgefield

Farah

Maverick

Western Straw Hats

Bulldogger

and American Hat Co.

One Group & A Great Selection

Western Style Shirts

Long Sleeve 30% Off Reg. Price

Rodeo Caps

reg. price \$12.99 now \$9.10

Short Sleeve Western Shirts \$8.99 now \$6.99

Ladies

Summer Sportswear On Sale with Great Savings!

One rack of 100

Skirts & Slacks 1/3 off

Mr. Dino- Ship N Shore- Jane Colby

Tank Tops and Sleeveless Blouses 1/2 price

# SPECIALS THIS WEEK

7-22-76 to 7-28-76

CARS	
200 1973 Datsun...Z dr Coupe...4 sp., air conditioned.....	\$1,795
149 1975 Pontiac Firebird Formula...Silver...Loaded...Extra Nice.....	\$4,995
1973 Cutlass Super Coupe...Real Nice Car.....	\$3,295
163 1973 chev. Caprice Sta Wagon...seal...Loaded...A Steal At.....	\$1,995
136 1973 Pont Catalina...4 Dr...Green...Air, etc.....	\$1,695
166 1973 Pont Catalina...4 Dr...Gold...Air, Pwr.....	\$1,695
165 1973 Pont Catalina...4 Dr...Gold...White.....	\$1,695
124 1970 Olds 98...4 Dr...Very Clean...One Owner...Loaded.....	\$1,295
208 1968 Buick Electra...4 Dr...HT.....	\$695
162 1974 Camaro Coupe...Extra nice...Just Arrived.....	\$3,495

TRUCKS	
191 1972 GMC 1/2 Ton...Long Narrow Bed...6 cyl. std.....	\$1,195
325 1973 GMC 3/4 Ton...Air...Pwr...New M.S. Tires.....	\$2,895
230 1973 3/4 Ton...4 speed...Good Strong Truck...Ready to Work.....	\$1,895
182 1973 Chev 3/4 Ton...4 speed Camper...Tool Box & 50 Gal. Tank.....	\$2,695
235 1972 Ford 3/4 Ton Crewcab...4 speed...Good Gang Truck.....	\$1,850
145 1973 GMC 1/2 Ton...Auto...Air...Power...Nice Truck.....	\$2,395
199 1969 Ford 1/2 Ton Pick-up.....	\$1,095
1971 Int'l Deisel...Sleeper Cab...318 Detroit...Tandem Drive.....	\$11,000

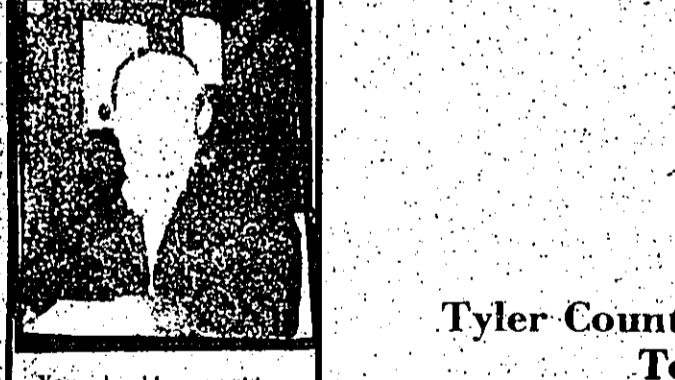
Several More To Choose From

**A&M MOTOR CO. INC.**

PHONE 283-2534 WOODVILLE TEXAS 605 S. MAGNOLIA

Got Sports News? Call 283-2569

Have You Met This Man?



You should meet him, get to know him. He's the expert who has the answers to all your insurance problems - Auto, Life, Business, Home. He can save you money. Too, a good man to know. call him soon.



Auto - Life - Fire Truck Commercial FAST-FAIR-FRIENDLY

**LEWIS HUDSON**

215 Kelly Blvd. Call 283-3724 Woodville, Tx.

# Car Wash Proceeds Help Kirby Band

WOODVILLE-A car wash will be held Saturday, July 24, at the Kirby High School Band Hall from 4 to 6 p.m. Proceeds will be used to finance the Kirby High Band's trip to the Orange Bowl Parade next December.

For \$3, a car will be washed, dried, vacuumed and wiped out. Those wishing to have their cars picked up for the service may call Janay Tolbert at 283-2198, Kym Collier at 283-2713 or Janet Gregory at 283-2733.



# Tyler County Pitcher G. Dill Delivers To Silbee Batter



# Tyler County Baserunner (Out Of Picture) Called Safe At First By Umpire

# Tips For The Outdoorsman

By Vern Sanford

Just as in anything else - if you want to be a truly successful fisherman you've got to give it the attention it requires.

Expert fishermen contend that "failure" to pay close attention to the fishing line has caused many bass to be lost. Usually, the bass is kept taut all the way to the water. Neither should there be slack in the line during the retrieve, for the angler must be able to "feel" any and all contacts made with the lure, be they ever so slight.

There must be something to what they say because many a fish strikes at the bait the instant it hits the water, and the angler's angler has taken up the slack in his line. Some fish have been known to smack the bait before it even lands on the water - which means the fisherman is often caught unaware since he is not yet ready to set the hook. That is, unless he has cast a taut line.

More fish are lost from loose lines than most fishermen realize, and some were actually hooked fish that got away before the angler even knew they had grabbed the bait.

Lots of fish follow the lure and hit the bait from behind, on the retrieve, as it moves toward the caster. When Mr. Bass feels the sharp point of the hook he expels the bait immediately. Since there was no tug on the line the fisherman does not realize there has been any activity - unless he had his eye on the line, which sometimes moves only a tiny bit.

Too many anglers cast the bait out then reel in with the butt-end of the rod handle resting firmly against the hip. As a consequence, they seldom get the feel of the strike.

So, grip the rod handle firmly and keep arms and elbows away from the body so that the lightest tug on the lure can be felt. Then the fisherman can react instantly and set the hook promptly and properly.

It seems that women have a natural sense of touch, which undoubtedly accounts for the fact that they enjoy "sudden" success in their fishing when they are very - first-time-out, and sometimes every trip thereafter.

A delicate sense of touch is the answer - so if you

Mon. Family Nite \$1 per car

**DOGWOOD** Box office

DRIVE-IN THEATRE Opens 8

WOODVILLE, TEXAS - Hwy 69 & 287 Show Starts 9

Free Stomach distress bags at the Box Office

Warning!!

If you have a weak stomach...  
If you have a weak heart...  
If a movie gives you nightmares...

Do Not Attend The Terrible

**TORSO** 9:00

GHOULS, FREAKS, HORRORS

Free Trip to the Hospital for anyone who should collapse from fright.

Nurse on duty to aid anyone who should collapse

Who will survive and what will be left of them? 11:00

**"THE TEXAS CHAINSAW MASSACRE"**

Amenous, most bizarre, and brutal crimes

Listen to KVLL Woodville and KTXJ Jasper

Be Sure To Attend The Tyler County Lion's Rodeo "America's Number 1 Sport" July 23-24



**Engine Repair School Graduates**

STUDENTS GRADUATED from the Tyler County Small Tractor School on Friday were, left to right, Malcom Seafie, Paul Brown, David Brown, all of Goldsmead, Ralph Kimbel, Franklin Ellison, of Woodville, Jack Langley, Indian Village, Lav Kirkland, Josephine Williams, J. W. Levinge, Quinette and Joe Short, of Clark. The school is sponsored by the Deep East Texas Council of Governments.

**Standards Deadline Extended**

COLLEGE STATION - Farmers now have until October 25 to comply with certain safety standards under the Occupational Safety and Health Act (OSHA) that were to become effective June 1.

The safety practice concerns guarding tractor power take-offs (PTOs), displaying safety signs and providing initial employee training for machinery operations. "Even though the deadline has been extended, farmers should continue with preparations to meet these safety standards," advises Dr. Gary Nelson, agricultural safety engineer for the Texas Agricultural Extension Service.

Particular emphasis is on guarding the PTO drive line. "The tractor shield on the rear PTO shaft must be kept in place," notes Nelson. However, the master shield may be removed when necessary to operate PTO driven equipment, provided the guards on such equipment cover the tractor PTO shafts.

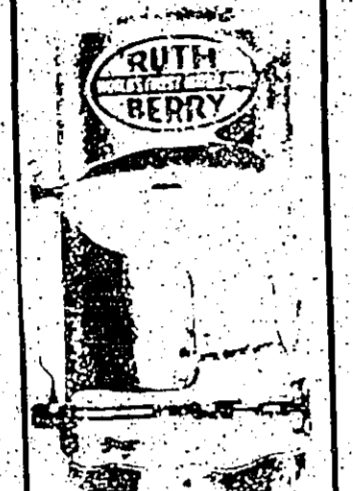
"Regarding safety training, a farmer must provide safety instruction for such equipment with which the farmer or his employees will be operating the power drive machinery. This instruction must include the following: 1. Keep all guards in place. 2. Do not operate machinery until all guards are in place. 3. Do not adjust, clean, or lubricate machinery while it is running. 4. Do not start machinery unless the master shield is in place. 5. Do not operate machinery until you are certain you understand the operation of the machinery. 6. Do not operate machinery until you are certain you understand the location of the PTO shafts. 7. Do not operate machinery until you are certain you understand the location of the PTO shafts. 8. Do not operate machinery until you are certain you understand the location of the PTO shafts. 9. Do not operate machinery until you are certain you understand the location of the PTO shafts. 10. Do not operate machinery until you are certain you understand the location of the PTO shafts.

**TFA Files Suit**

LUFKIN - The Texas Forestry Association has filed a suit filed July 2 against the U.S. Forest Service by a Dallas attorney and his Texas Committee on Natural Resources. TFA is being joined in the motion by a number of timber industry companies.

Federal District Judge William Wayne Justice of Tyler enjoined the U.S. Forest Service from disturbing the vegetation on 100,000 acres of the Sam Houston National Forest known as the Raven District. This action stopped 21 existing contracts in various stages of execution and put a number of people out of work.

**WORLD'S FINEST WATER PUMP**



**PARGAS**  
311 S. Magnolia  
Woodville, Tex.  
283-2578

Shepherd's Enterprises  
24 Hour Road Service  
Auto-Trucks-Factor  
283-3608 283-2389

*We're getting ready to serve*

**Tyler County's total Real Estate needs!**

**Buy  
Sell  
Build  
Trade**

- 802
- C. Grady Holderman
- Real Estate
- Builder

**Office Opening July 30**

**Call now to list or see property... 283-3727**

H.D. Schulze 283-3541  
J. Robert McCombs 283-2135



**Alan Miller's T-WHEELER**  
By ALAN MILLER, Director, Public Information Temple-Estex Incorporated

What are political party national conventions coming to? The placid serenity of the Democratic Convention this year was certainly in sharp contrast with the future of storm Thurmond's ambush in 1948, or the rioting and boycott of old pros at Chicago twenty years later.

If it hadn't been for Barbara Jordan's stirring oration on opening night, most of us would have slept through the whole spectacle.

**POOR JOHN GLENN.** He should have stayed with NASA. An editor friend of mine said the only thing that could have made Glenn look worse, would have been if he followed Barbara to the podium.

Peter Duchin got a workout of course. For a fellow whose band usually performs for college proms and debutante coming out parties, he really outdid himself on the Star Spangled Banner and Sousa marches.

I've never had the privilege of attending a party convention, but certainly, it must be frustrating to so many of the speakers, where the delegates pay so little attention to what is being said.

Maybe that was John Glenn's problem. He just could not cope with the fact that nobody was listening.

**IT SEEMS TO TAKE** the charisma of the Jordan-Humphrey-Mondale-Burke coalition to attract any interest or attention.

The one person I wanted to hear, Governor Edwards of Louisiana, must have made all the networks mad. The minutes he reached the microphones, all the networks cut away for commercials or commentary.

And who ever heard of a Democratic Convention without a floor fight over credentials or party platform.

All this sweetness and light seems to good to last. Having George Wallace and Mayor Daley of Chicago exchanging pleasantries with each other was a little unbelievable.

But then, the Democrats are probably still remembering the acrimony and division that possibly cost them the White House in 1968 and 1972.

**ON THE OTHER HAND,** they are also undoubtedly remembering the over-confidence that cost Tom Dewey the Presidency in 1948.

Next month, we can see the Republican show in Kansas City. The way Reagan and President Ford are buttonholing the uncommitted delegates, that nomination could go right down to the wire. Particularly with John Conally waiting in the wings.

In the meantime, we apparently are going to the Olympics, the National All Stars clobbered the Americans again and there are only 132 shopping days till Christmas.

**Direct Furniture Discount**  
302 N. Magnolia 283-5211  
**Evans-Black Carpets**



**Mann Furniture**  
206 W. Bluff 283-3740



**Mrs. Best Wins TV**

TV WINNER - Mrs. Odessa Best, shown at right, is the lucky winner of a free television which was given away by Mrs. Dorothy Nettles, (L.), owner and operator of Sears Catalog Store in Woodville. According to Mrs. Nettles approximately 1,200 persons registered for the TV and came into the store for free door prizes during the Sears recent Anniversary Sale which was held on Saturday, July 17.

**July Tax Rebates Reported**

AUSTIN - The city of Woodville was sent a check last Thursday for \$2,854.34 by the state comptroller's office for the July rebate on the one-cent city sales tax.

A total of \$13.4 million was paid back to 335 Texas cities and towns by State Comptroller Bob Bullock.

Bullock also released a computer analysis of gross retail sales in Texas counties which, he said, shows the Texas retail economy is growing as fast as a Waller County watermelon.

With 209 business outlets reporting in Tyler County, gross sales reported totaled \$38,342,511, of which \$32,957,668 was taxable. After deductions were taken out and use tax purchases added, the amount subject to taxation equaled \$2,526,684.

The analysis shows there was a total \$28.3 billion in gross retail sales in Texas during the first quarter of 1976, the Comptroller said.

"That is 13.8 percent higher than the \$24.9 billion in gross sales during the same period in 1975 and a whopping 28.2 percent higher than the \$22.1 billion gross sales in the first quarter of 1974," he said.

Bullock said city sales tax rebates are also running well ahead of 1975.

The \$158.8 million rebate so far in 1976 is nearly 13 percent ahead of the \$140.5 million rebated during the same period in 1975, he said.

**Currie's Column**  
by Clinton Currie  
Tyler County Extension Agent



Reports from many locations in Tyler County indicate that fall army worms are damaging hay meadows and pastures, according to Clinton Currie, County Extension Agent. Usually, these pests are most active in late summer and fall, but favorable temperatures and moisture conditions have allowed activity approximately a month early.

Most grasses, forage crops and small grains are susceptible to attack by army worms, and serious damage can be done if the worms are not detected early. The larvae normally feed at night, but are also active on cloudy days. Frequent and careful inspection in shaded areas and along the borders of pastures and hay fields is necessary for identifying the pests before extensive damage is done, says Currie.

The \$158.8 million rebate so far in 1976 is nearly 13 percent ahead of the \$140.5 million rebated during the same period in 1975, he said.

Newly hatched larvae, less than one-half inch long, are white with black heads.

When selecting an insecticide, be sure to check the product label for proper use registration. Also, read the label carefully and follow all instructions for mixing and applying the chemical.

**BIRDWELL'S JULY CLEARANCE**

- One Group of **Ladies' and Junior Coordinates** 30% off
- Haggar Leisure Suits** Reg. '40<sup>00</sup> \$26<sup>88</sup>
- Boy's **Knit Shirts** Values to '5<sup>00</sup> 30% off
- Men's Suits** Value to '90<sup>00</sup> \$47<sup>88</sup>
- One Group **Towels** values to '2<sup>99</sup> \$1<sup>79</sup>
- Men's Vested Suits** \$54<sup>88</sup> 100% Polyester Reg. '80<sup>00</sup>
- Washcloths** 5 for \$1<sup>00</sup>
- Men's Slacks** 30% off Values to '25<sup>00</sup>
- Sheets Asstd. Colors** Reg. '5<sup>99</sup> \$3<sup>88</sup>
- One Group **Leisure Suits** Values to '30<sup>00</sup> \$17<sup>88</sup>
- One Group **Knit Material** Reg. '1<sup>99</sup> 97¢ yd.
- Men's Leisure Suits** Reg. '40<sup>00</sup> \$24<sup>88</sup>
- Concord Fabrics** 1/2 price
- Men's Trio Suits** Reg. '110<sup>00</sup> \$67<sup>88</sup>
- Men's **Knit Shirts** Values to '12<sup>00</sup> 30% off
- One Group **Leisure Suits** 30% off
- Leisure Shirts** Reg. '16<sup>00</sup> \$6<sup>88</sup>
- Kettle Cloth** 1/2 price
- One Group **Ladies' Pantsuits** Reg. '28<sup>00</sup> \$9<sup>88</sup>
- Ladies' Panty Hose** 3pr. for \$1<sup>00</sup>
- Brushed Denim Jeans** Reg. '14<sup>00</sup> \$5<sup>88</sup> or 2/\$11<sup>00</sup>
- One Group **Leisure Suits** \$14<sup>88</sup>

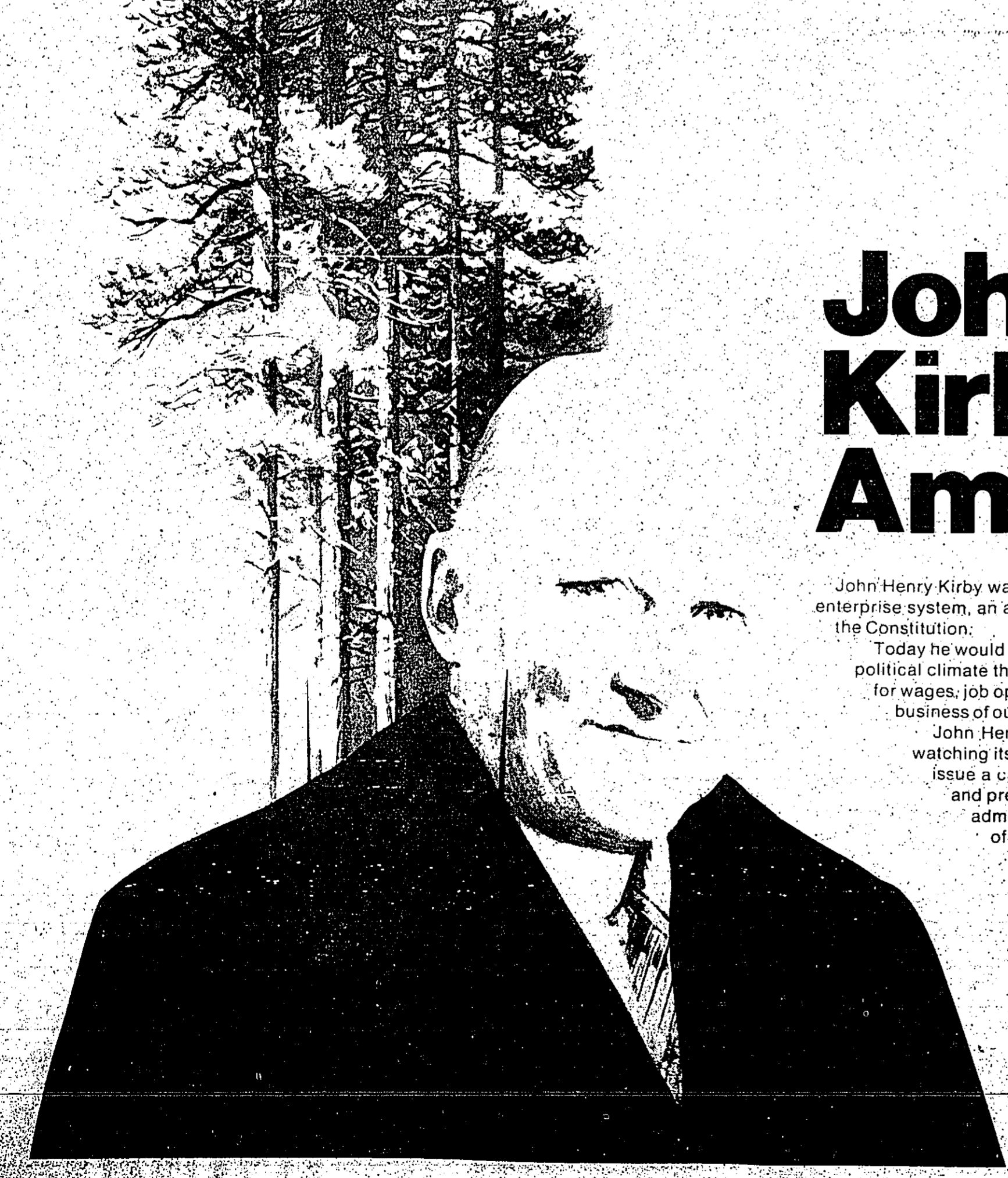
Three years ago, a roll of aluminum wire cost \$123.<sup>00</sup> Today, it costs \$269.<sup>00</sup>

Imagine that. Twice what it was just a few years ago. And we'll have to buy miles of it this year alone. We don't have any choice. That's the going price. And that's just one small example of our rising costs at GSU. It's costing us more to produce your dependable electric service. So, it's costing you more. We don't like it. And we know you don't.

Still, there are ways to manage the use of your electricity more efficiently. And we'd like to help. Just ask us.

Your electric bill. We'll help you make the least of it.

**GSU**  
GULF STATES UTILITIES COMPANY



**John Henry Kirby loved America.**

John Henry Kirby was one of the pioneers of American industry and the free enterprise system, an avid believer in the Declaration of Independence and the Constitution.

Today he would be concerned with the national condition, aghast at the political climate threatening private industry's capacity to generate profits for wages, job opportunities, creative investments, and taxes for the business of our country.

John Henry loved America. He would not stand by silently watching its spirit and initiative disintegrate any further. He would issue a call across the land for the reshaping of long-term goals and preservation of freedom in the marketplace. He would admonish us to vote for national, state, and local leaders of vision and purpose with sensible, fiscally-sound programs worthy of our trust. And he would tell us in his own words that his beloved America has always had the astonishing capacity for renewal.

LET US LISTEN!

1901 **K** 1976  
**Kirby**  
KIRBY LUMBER CORPORATION



# CLASSIFIED ADS!

### CARDS OF THANKS

We would like to express our appreciation to all the friends who were so kind to us in our time of loss. The family of Easton Wood.

The family of Louise Ling wishes to thank their friends for all the food, beautiful flowers, and sympathy shown at the time of their loss.

Webster did not put words in the dictionary that could possibly describe our sincere appreciation and humble gratitude for all the wonderful things our friends and neighbors did for us during the loss of our loved one. We thank you from the bottom of our hearts and may God bless each of you.

Sarah and Hal Hudnall

### TRAVEL TRAILERS FOR SALE

Reduce safe & fast with GoBeez Tablets & E-Vap "Water Pills" Jarro's Pharmacy. 28-6p

FOR SALE: Weaned piglets \$25.00. At the trailer across from the saw mill at Chester, 969-2436. 30-1p

FOR SALE: Chain saws—McCulloch, Sishi, Poulan, Partner, Home-Lite, Jonereads, DURHAM SAW CO. call 283-2750. 10-1c

FOR SALE: 1970 Pontiac Catalina 4 door auto, power air conditioned, tape player, good condition by owner. \$1,195.00. Call Wyatt. Bell 283-5978. 29-2p

FOR SALE: 1970 Pontiac Catalina 4 door auto, power air conditioned, tape player, good condition by owner. \$1,195.00. Call Wyatt. Bell 283-5978. 29-2p

FOR SALE: 1970 Pontiac Catalina 4 door auto, power air conditioned, tape player, good condition by owner. \$1,195.00. Call Wyatt. Bell 283-5978. 29-2p

### HELP WANTED

FOR SALE: 1970 Pontiac Catalina 4 door auto, power air conditioned, tape player, good condition by owner. \$1,195.00. Call Wyatt. Bell 283-5978. 29-2p

FOR SALE: 1970 Pontiac Catalina 4 door auto, power air conditioned, tape player, good condition by owner. \$1,195.00. Call Wyatt. Bell 283-5978. 29-2p

FOR SALE: 1970 Pontiac Catalina 4 door auto, power air conditioned, tape player, good condition by owner. \$1,195.00. Call Wyatt. Bell 283-5978. 29-2p

### FOR RENT

FOR RENT: 1970 Pontiac Catalina 4 door auto, power air conditioned, tape player, good condition by owner. \$1,195.00. Call Wyatt. Bell 283-5978. 29-2p

FOR RENT: 1970 Pontiac Catalina 4 door auto, power air conditioned, tape player, good condition by owner. \$1,195.00. Call Wyatt. Bell 283-5978. 29-2p

FOR RENT: 1970 Pontiac Catalina 4 door auto, power air conditioned, tape player, good condition by owner. \$1,195.00. Call Wyatt. Bell 283-5978. 29-2p

### WANTED

WANTED: 1970 Pontiac Catalina 4 door auto, power air conditioned, tape player, good condition by owner. \$1,195.00. Call Wyatt. Bell 283-5978. 29-2p

WANTED: 1970 Pontiac Catalina 4 door auto, power air conditioned, tape player, good condition by owner. \$1,195.00. Call Wyatt. Bell 283-5978. 29-2p

WANTED: 1970 Pontiac Catalina 4 door auto, power air conditioned, tape player, good condition by owner. \$1,195.00. Call Wyatt. Bell 283-5978. 29-2p

### FOR SALE

FOR SALE: 1970 Pontiac Catalina 4 door auto, power air conditioned, tape player, good condition by owner. \$1,195.00. Call Wyatt. Bell 283-5978. 29-2p

FOR SALE: 1970 Pontiac Catalina 4 door auto, power air conditioned, tape player, good condition by owner. \$1,195.00. Call Wyatt. Bell 283-5978. 29-2p

FOR SALE: 1970 Pontiac Catalina 4 door auto, power air conditioned, tape player, good condition by owner. \$1,195.00. Call Wyatt. Bell 283-5978. 29-2p

### FOR SALE

FOR SALE: 1970 Pontiac Catalina 4 door auto, power air conditioned, tape player, good condition by owner. \$1,195.00. Call Wyatt. Bell 283-5978. 29-2p

FOR SALE: 1970 Pontiac Catalina 4 door auto, power air conditioned, tape player, good condition by owner. \$1,195.00. Call Wyatt. Bell 283-5978. 29-2p

FOR SALE: 1970 Pontiac Catalina 4 door auto, power air conditioned, tape player, good condition by owner. \$1,195.00. Call Wyatt. Bell 283-5978. 29-2p

### FOR SALE

FOR SALE: 1970 Pontiac Catalina 4 door auto, power air conditioned, tape player, good condition by owner. \$1,195.00. Call Wyatt. Bell 283-5978. 29-2p

FOR SALE: 1970 Pontiac Catalina 4 door auto, power air conditioned, tape player, good condition by owner. \$1,195.00. Call Wyatt. Bell 283-5978. 29-2p

FOR SALE: 1970 Pontiac Catalina 4 door auto, power air conditioned, tape player, good condition by owner. \$1,195.00. Call Wyatt. Bell 283-5978. 29-2p

### FOR SALE

FOR SALE: 1970 Pontiac Catalina 4 door auto, power air conditioned, tape player, good condition by owner. \$1,195.00. Call Wyatt. Bell 283-5978. 29-2p

FOR SALE: 1970 Pontiac Catalina 4 door auto, power air conditioned, tape player, good condition by owner. \$1,195.00. Call Wyatt. Bell 283-5978. 29-2p

FOR SALE: 1970 Pontiac Catalina 4 door auto, power air conditioned, tape player, good condition by owner. \$1,195.00. Call Wyatt. Bell 283-5978. 29-2p

### FOR SALE

FOR SALE: 1970 Pontiac Catalina 4 door auto, power air conditioned, tape player, good condition by owner. \$1,195.00. Call Wyatt. Bell 283-5978. 29-2p

FOR SALE: 1970 Pontiac Catalina 4 door auto, power air conditioned, tape player, good condition by owner. \$1,195.00. Call Wyatt. Bell 283-5978. 29-2p

FOR SALE: 1970 Pontiac Catalina 4 door auto, power air conditioned, tape player, good condition by owner. \$1,195.00. Call Wyatt. Bell 283-5978. 29-2p

### CORNER OF VALUES

Ceramic Painting  
Paint in low used Cars and Trucks!!!!

Heritage Garden Gift Shop

DOUG S AUTO  
Call 283-3650  
410N Magnolia

POSEY POT  
Plants, Bedding  
We feature an assortment of hanging baskets, \$4.00 and up. 1/2 inch, 1/4 inch, 1/8 inch, 1/16 inch, 1/32 inch, 1/64 inch, 1/128 inch, 1/256 inch, 1/512 inch, 1/1024 inch, 1/2048 inch, 1/4096 inch, 1/8192 inch, 1/16384 inch, 1/32768 inch, 1/65536 inch, 1/131072 inch, 1/262144 inch, 1/524288 inch, 1/1048576 inch, 1/2097152 inch, 1/4194304 inch, 1/8388608 inch, 1/16777216 inch, 1/33554432 inch, 1/67108864 inch, 1/134217728 inch, 1/268435456 inch, 1/536870912 inch, 1/1073741824 inch, 1/2147483648 inch, 1/4294967296 inch, 1/8589934592 inch, 1/17179869184 inch, 1/34359738368 inch, 1/68719476736 inch, 1/137438953472 inch, 1/274877914944 inch, 1/549755829888 inch, 1/1099511659776 inch, 1/2199023319552 inch, 1/4398046639104 inch, 1/8796093278208 inch, 1/17592185564416 inch, 1/35184371128832 inch, 1/70368742257664 inch, 1/140737484555296 inch, 1/281474969110592 inch, 1/562949938221184 inch, 1/1125899876443776 inch, 1/2251799752887552 inch, 1/4503599505775104 inch, 1/9007199011550208 inch, 1/18014398023000416 inch, 1/36028796046000832 inch, 1/72057592092001664 inch, 1/144115184184003328 inch, 1/288230368368006656 inch, 1/576460736736013312 inch, 1/1152921473472026624 inch, 1/230584294684405248 inch, 1/461168589368810496 inch, 1/922337178737620992 inch, 1/1844674377475241984 inch, 1/3689348754750483968 inch, 1/7378697509500967936 inch, 1/14757395019001935872 inch, 1/29514790038003871744 inch, 1/59029580076007743688 inch, 1/1180591601520154875776 inch, 1/2361183203040289751552 inch, 1/4722366406080579503104 inch, 1/9444732812161159006208 inch, 1/1888946562322318012416 inch, 1/3777893124644636024832 inch, 1/7555786249289272049664 inch, 1/15111572487677454912128 inch, 1/30223144975354909824256 inch, 1/60446289950709819648512 inch, 1/12089257990141763937024 inch, 1/24178515980283527874048 inch, 1/48357031960567055748096 inch, 1/9671406392113411149616192 inch, 1/19342812784222822839232 inch, 1/38685625568445245678464 inch, 1/77371251136890491353536 inch, 1/154742502737780982671072 inch, 1/309485005475561965342144 inch, 1/618970010951123071084288 inch, 1/1237940021902246042168576 inch, 1/2475880043804492084337152 inch, 1/4951760087608984168667328 inch, 1/990352017521796833733456 inch, 1/1980704034435936674668112 inch, 1/3961408068871873349332224 inch, 1/7922816137743746698664448 inch, 1/1584563275487449333328896 inch, 1/31691265509749486666577792 inch, 1/633825310194989733331555552 inch, 1/12676506203899794666631111104 inch, 1/2535301240779959133332222208 inch, 1/5070602481559918266644444416 inch, 1/10141204963119795453328888832 inch, 1/2028240992623959086657777764 inch, 1/4056481985247918173315555528 inch, 1/81129639704958363466311111104 inch, 1/1622592794091667269322222208 inch, 1/3245185588183353386444444416 inch, 1/649037117636670677288888832 inch, 1/1298074353733341355497777764 inch, 1/25961487074666827111195555528 inch, 1/51922974149333341355497777764 inch, 1/1038459428986665426932222208 inch, 1/20769188579733334135549777764 inch, 1/415383771594666827111195555528 inch, 1/8307675431933334135549777764 inch, 1/16615350838666827111195555528 inch, 1/3323070167733334135549777764 inch, 1/66461403354666827111195555528 inch, 1/1329228070933334135549777764 inch, 1/26584561418666827111195555528 inch, 1/5316912283733334135549777764 inch, 1/106338245674666827111195555528 inch, 1/21267649134933334135549777764 inch, 1/425352982698666827111195555528 inch, 1/85070596539733334135549777764 inch, 1/1701411930794666827111195555528 inch, 1/340282386158933334135549777764 inch, 1/6805647723178666827111195555528 inch, 1/13611294443557733334135549777764 inch, 1/2722258886715554666827111195555528 inch, 1/5444517773431111933334135549777764 inch, 1/10889035468622222666827111195555528 inch, 1/2177807093724444533334135549777764 inch, 1/4355614187448888666827111195555528 inch, 1/87112283749777733334135549777764 inch, 1/174225675495555666827111195555528 inch, 1/348451350991111133334135549777764 inch, 1/6969027019822222666827111195555528 inch, 1/1393805403964444533334135549777764 inch, 1/2787610807928888666827111195555528 inch, 1/55752216158577733334135549777764 inch, 1/11150442317115554666827111195555528 inch, 1/22300884634231111933334135549777764 inch, 1/44601769268462222666827111195555528 inch, 1/8920353853692444533334135549777764 inch, 1/17840707071384888666827111195555528 inch, 1/3568141414276977733334135549777764 inch, 1/71362828285539555666827111195555528 inch, 1/14272565561071111933334135549777764 inch, 1/2854513112142222666827111195555528 inch, 1/570902622428444533334135549777764 inch, 1/114180524456888666827111195555528 inch, 1/22836104891377733334135549777764 inch, 1/456722097827555666827111195555528 inch, 1/9134441956551111933334135549777764 inch, 1/1826888313102222666827111195555528 inch, 1/365377662620444533334135549777764 inch, 1/730755325240888666827111195555528 inch, 1/14615106048177733334135549777764 inch, 1/292302120963555666827111195555528 inch, 1/5846042419271111933334135549777764 inch, 1/1169208483844222666827111195555528 inch, 1/2338416967688444533334135549777764 inch, 1/467683393537688666827111195555528 inch, 1/93536678707537733334135549777764 inch, 1/187073374150755666827111195555528 inch, 1/3741467483015111933334135549777764 inch, 1/7482934966030222666827111195555528 inch, 1/1496586932060444533334135549777764 inch, 1/299317386412088666827111195555528 inch, 1/59863477282417733334135549777764 inch, 1/119726944548355666827111195555528 inch, 1/2394538896967111933334135549777764 inch, 1/4789077793934222666827111195555528 inch, 1/9578155587868444533334135549777764 inch, 1/1915631177737688666827111195555528 inch, 1/383126235547537733334135549777764 inch, 1/7662524710950755666827111195555528 inch, 1/15325049421001511933334135549777764 inch, 1/30650098842003022666827111195555528 inch, 1/61300197684006044533334135549777764 inch, 1/12260039536012088666827111195555528 inch, 1/2452007907202417733334135549777764 inch, 1/49040158144048355666827111195555528 inch, 1/980803162880967111933334135549777764 inch, 1/196160625761934222666827111195555528 inch, 1/392321251523868444533334135549777764 inch, 1/78464250304773688666827111195555528 inch, 1/1569285066095537733334135549777764 inch, 1/31385701321910755666827111195555528 inch, 1/62771402643821511933334135549777764 inch, 1/125542812876643022666827111195555528 inch, 1/2510856255532860444533334135549777764 inch, 1/5021712511065612088666827111195555528 inch, 1/10043425021321217733334135549777764 inch, 1/200868500426424355666827111195555528 inch, 1/4017370008528487111933334135549777764 inch, 1/803474001705697422666827111195555528 inch, 1/160694803511375444533334135549777764 inch, 1/32138960702275088666827111195555528 inch, 1/6427792140455017733334135549777764 inch, 1/128555822809100355666827111195555528 inch, 1/2571116456182007111933334135549777764 inch, 1/514223291236401422666827111195555528 inch, 1/10284464225288028444533334135549777764 inch, 1/2056892845057605688666827111195555528 inch, 1/411378569011515137733334135549777764 inch, 1/8227571380230303155666827111195555528 inch, 1/16455147604606063111933334135549777764 inch, 1/3291029520921212622666827111195555528 inch, 1/65820590418424252444533334135549777764 inch, 1/13164118083684850488666827111195555528 inch, 1/2632823616736970097733334135549777764 inch, 1/52656472334739401955666827111195555528 inch, 1/105312944695488819111933334135549777764 inch, 1/21062588939097763822666827111195555528 inch, 1/4212517787819552764666827111195555528 inch, 1/84250355756391051133334135549777764 inch, 1/1685007115178201022666827111195555528 inch, 1/33700142303564020444533334135549777764 inch, 1/6740028460712804088666827111195555528 inch, 1/134800569214560817733334135549777764 inch, 1/2696011384291216355666827111195555528 inch, 1/53920227685824327111933334135549777764 inch, 1/1078404537176466444533334135549777764 inch, 1/215680907435293288666827111195555528 inch, 1/43136181487058657733334135549777764 inch, 1/862723629741173155666827111195555528 inch, 1/1725447559422346311933334135549777764 inch, 1/3450895118444872622666827111195555528 inch, 1/69017902368897452444533334135549777764 inch, 1/13803580737779490488666827111195555528 inch, 1/276071614755989817733334135549777764 inch, 1/552143229511979796355666827111195555528 inch, 1/11042865802359599311933334135549777764 inch, 1/22085731604719198622666827111195555528 inch, 1/441714632094383972444533334135549777764 inch, 1/88342926418876794488666827111195555528 inch, 1/1766858483377534897733334135549777764 inch, 1/35337169667550697955666827111195555528 inch, 1/70674339335101395911933334135549777764 inch, 1/141348786670202791822666827111195555528 inch, 1/2826975733404055836444533334135549777764 inch, 1/565395146680811167288666827111195555528 inch, 1/11307902936162233455666827111195555528 inch, 1/226158058723244469111933334135549777764 inch, 1/45231611744648883822666827111195555528 inch, 1/904632234892977676444533334135549777764 inch, 1/18092644897855535288666827111195555528 inch, 1/3618528979711107057733334135549777764 inch, 1/72370579594222141155666827111195555528 inch, 1/144741159188444282311933334135549777764 inch, 1/289482318376888564622666827111195555528 inch, 1/578964636753777129111933334135549777764 inch, 1/11579292750755425822666827111195555528 inch, 1/2315858550151090516444533334135549777764 inch, 1/46317171003021812888666827111195555528 inch, 1/926343420060436257733334135549777764 inch, 1/1852686840120727255666827111195555528 inch, 1/37053736802414545111933334135549777764 inch, 1/7410747360482909022666827111195555528 inch, 1/148214947209658180444533334135549777764 inch, 1/2964298944193163688666827111195555528 inch, 1/592859788838632737733334135549777764 inch, 1/11857197767726454755666827111195555528 inch, 1/23714395535452909511933334135549777764 inch, 1/47428791070905819022666827111195555528 inch, 1/94857582141811638444533334135549777764 inch, 1/18971516428363277688666827111195555528 inch, 1/3794303285672655537733334135549777764 inch, 1/75886065713453110755666827111195555528 inch, 1/15177213142690231511933334135549777764 inch, 1/30354426285380463022666827111195555528 inch, 1/607088525707609260444533334135549777764 inch, 1/12141770514152181288666827111195555528 inch, 1/2428354102830436257733334135549777764 inch, 1/48567082056608725155666827111195555528 inch, 1/97134164113217450311933334135549777764 inch, 1/1942683282264350622666827111195555528 inch, 1/38853665645287012444533334135549777764 inch, 1/7770733129057402488666827111195555528 inch, 1/1554146658111480497733334135549777764 inch, 1/31082933162229609955666827111195555528 inch, 1/6216586632445921991193333413554977776

# Wilson's PETTICOAT POLITICS

WASHINGTON—Even though the biggest Bicentennial celebration of July 4th is all but a memory, there are still special events each week in Washington. Last week the fantastic Air and Space Building opened with the Kitty Hawk zooming through the sky high ceiling. And last week there was another opening. The Old Senate Chamber, restored to the glided days of Henry Clay, Daniel Webster and John C. Calhoun, finally opened. Finally, because the restoration project began in 1935. And ended up costing over a million dollars. The aptly named Senate was more colorful than today's stuffy, guarded chamber. Our own Sam Houston, outfitted in a panther skin waist coat, pompadour and brightly colored cravat, would sit and while dainty wooden hearts from pine, oak and cherry. Back then, a sign was posted outside the galleries, asking the spectators to please keep their feet on the floor lest the dirt from shoes propped up on the railing drop on the heads of the senators below. Today on the chamber floor, spittoons are in abundance. Some say the old senators wore not terribly tidy. And Henry Clay in his "well-cut broadcloth, gleaming shirtfront and high white collar" took stuff as a voting signal to his followers. Or so Vice President Van Buren believed.

James K. Polk, the Senate Chamber's restorer, has slowly moved ahead. It's a splendid room, and reminder of our past. Especially imagining the Cherokee chiefs listening as Henry Clay addressed their right to be heard by the Supreme Court. General Lafayette returned here in triumph in 1824. The Haynes-Chamber's restoration has returned to its present chamber, the Supreme Court moved in 1935. Since that time, the Chamber's restoration has slowly moved ahead. It's a splendid room, and reminder of our past. Especially imagining the Cherokee chiefs listening as Henry Clay addressed their right to be heard by the Supreme Court. General Lafayette returned here in triumph in 1824. The Haynes-Chamber's restoration has returned to its present chamber, the Supreme Court moved in 1935. Since that time, the Chamber's restoration has slowly moved ahead.

# Two Tyler County Youths To Attend 4-H Congress

AUSTIN—Two Tyler County 4-H members, will be attending the Texas 4-H Congress in Austin, July 27-30.

Henry Joe Jordan, Jr. son of Mr. and Mrs. Henry Joe Jordan Sr. of Spriger, and Denise Stanford, daughter of Mr. and Mrs. Bennie Stanford of Woodville, will represent the county at the congress.

With a theme of "We the People," the congress will be highlighted by a tour of the state capital and actual involvement in presenting a bill before the Texas legislature.

Keynote speakers during the congress will be Reagan Brown, special assistant to the governor of Texas, who will speak on "Government of the People," and State Representative Sarah Waddell of Austin, who will talk on the topic, "We the People."

Other speakers include Senator A.M. Atkin of Paris, and Judge Thomas M. Reavley of the Texas State Supreme Court will discuss "Three Billions of Texas State Government."

The state council is the governing body of 4-H and gives overall leadership and direction to 4-H programs and activities.

# REGIONAL BICENTENNIAL NOTES

By PRICE DANIEL, SR. CHAIRMAN, REGIONAL BICENTENNIAL COMMITTEE ATASCOSITO HISTORICAL SOCIETY.

While each of the ten counties in this Southeast Texas region has some type of Bicentennial program of its own, each can share some credit and pride in being a part of the only regional Bicentennial heritage program in Texas.

Several counties have joined together in festivals which have been accredited by the State Bicentennial Commission, but thus far there are no other regional programs based upon the historical or heritage theme.

As Texas' Bicentennial Chairman, Sam Kinch, Sr., said at the recent regional banquet in Beaumont, the Southeast Texas Regional program will result in permanent monuments which will live long after festivals and celebrations are forgotten. This is because the program includes the completion of the Sam Houston Regional Library and Research Center at Liberty, a 17,000 sq. ft. building which will serve as the State's official historical depository for this ten county area.

In cooperation with Lamar University, the Texas Library and Historical Commission will gather in this library and depository non-current official records which have no other place for safekeeping, as well as many historic private collections heretofore stored in attics and basements. In most other States this type of material is housed in the official state archives, but Texas is too large for that. With 254 counties, each with interesting histories and documents, the Texas State Archives building is not large enough to accommodate the preservation of this local and regional material. Thus, the Legislature authorized the establishment of a system of regional depositories, each to be operated in cooperation with an educational institution.

# Annual Homecoming Set At New Shiloh

NEW SHILOH—The annual homecoming at New Shiloh Baptist Church (Old Campground) will be held Saturday and Sunday, July 24-25.

Singing is scheduled to begin at 8 p.m. Saturday. Sunday morning services will begin at 10 a.m., with a basket lunch to follow at noon. There will be music singing in the afternoon. Chairman Foy Swainey invites everyone to attend.

## HEADQUARTERS CLASS RING

FOR ORDERING & DELIVERING YOUR CLASS RING

Look for other class ring offers

The Carriage House Kountze, Texas

## Dr. Gary E. Tatum, Ophthalmologist

WOODVILLE INN, ROOM 107 WEDNESDAY, 9-5 P.M.

CALL ANY WEEKDAY FOR APPOINTMENT 283-3011

\* GLASSES FITTED

\* COMPLETE EYE EXAMINATION

\* REPAIR WORK ON FRAMES

## THE HARTFORD

YOUR Independent AGENT

Globe-Mann Ins. Agency

Woodville, Texas Call 283-2528 Tom McGuire, Mgr.

# Pea Jamboree Set For July 23-25

ATHENS—The 6th annual Black-Eyed Pea Jamboree will be held in Athens July 23-25 with contests, entertainment, pageants, beauty and fun for all ages.

Friday morning when the first artists open their booths for the Arts and Crafts Show until Sunday evening when the last terrapin has been raced and the last Black-Eyed Pea eaten.

"There is something for everyone happening almost every hour," said Vivian Tulinson, chairman of the Jamboree.

Tulinson noted that one of the most popular events and the very heart of the Black-Eyed Pea Jamboree is our Cook-off. And, as always, we would like to encourage as many people as possible to participate.

PUBLISHER'S COPY State Bank No. 1197

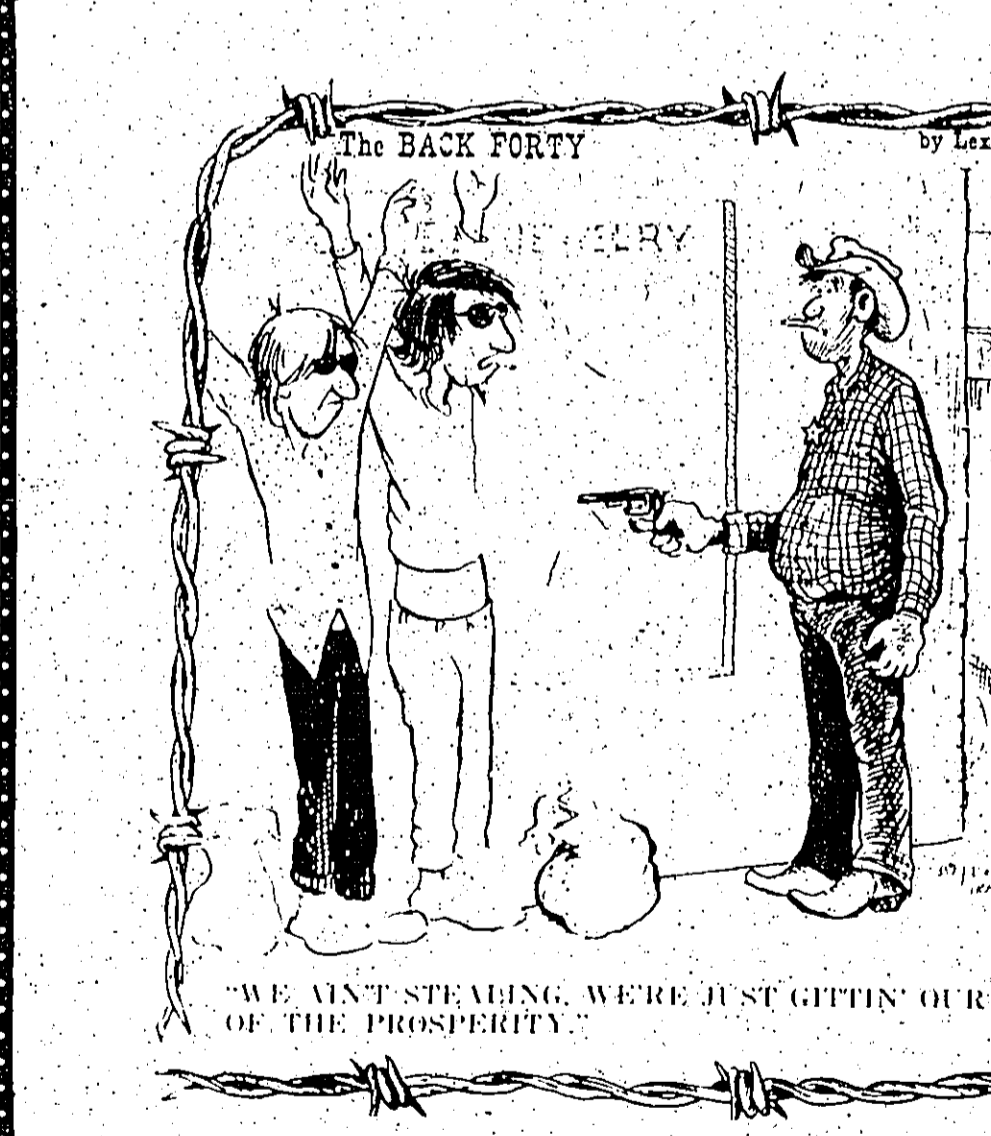
Consolidated Report of Condition of Citizens State Bank of Woodville in the State of Texas and Domestic Subsidiaries at the close of business on June 30, 1976

BALANCE SHEET		ASSETS		Ch.	Item	Col.	Mill.	Thous.
1	Cash and due from banks	C	7	A	2	206	1	
2	U.S. Treasury securities	B	1	E	1	820	2	
3	Loans on real estate	B	2	E	1	830	4	
4	Loans on personal property	B	3	E	1	99	2	
5	Other loans, notes, and debentures	B	4	E	1	99	2	
6	Corporate stock					None	6	
7	Investment account securities					None	6	
8	Federal funds sold and securities purchased under agreements to resell	D	4			2	125	9
9	Loans, Total (excluding unearned income)	A	10			8	595	2a
10	Loans, Net					8	112	10
11	Direct loan financing					None	10	
12	Bank premises, furniture and fixtures, and other assets representing bank premises					26	11	
13	Real estate owned other than bank premises					None	12	
14	Investments in unconsolidated subsidiaries and associated companies					None	13	
15	Customers' deposits to this bank on acceptances outstanding					None	14	
16	Other assets					19	833	16
17	Total ASSETS (sum of items 1 thru 16)					17	1,709	24
18	Liabilities					7	131	17
19	Deposits of individuals, partnerships, and corporations	F	31	A		2	117	18
20	Deposits of United States Government	F	3	B+C		2	583	20
21	Deposits of States and political subdivisions	F	3	A+B+C		None	21	
22	Deposits of foreign governments and official institutions	F	4	A+B+C		8	2	23
23	Deposits of commercial banks	F	5	A+B+C		3	104	24
24	Certified and officers' checks	F	7	A		8	156	25
25	Total DEPOSITS (sum of items 17 thru 23)					8	156	26
26	Total demand deposits	F	8	A		2	213	27
27	Time deposits	F	9	B+C		None	28	
28	Federal funds purchased and securities sold under agreements to repurchase	E	4			None	29	
29	Other liabilities for borrowed money					None	30	
30	Surplus, undivided profits					None	31	
31	Acceptances, executed by or for account of this bank and outstanding	H	9			None	32	
32	Other liabilities					None	33	
33	Total LIABILITIES (excluding subordinated notes and debentures)					17	833	30
34	Subordinated notes and debentures					None	31	
35	Preferred stock					None	32	
36	Common stock					600	34	
37	Surplus					822	35	
38	Reserve for contingencies and other capital reserves					None	36	
39	Total EQUITY CAPITAL (sum of items 32 thru 36)					2	1,022	37
40	Total LIABILITIES AND EQUITY CAPITAL (sum of items 30, 31 and 37)					17	1,709	38

MEMORANDA

- Average for 15 or 30 calendar days ending with call date:
  - Cash and due from banks (corresponds to item 1 above) 2,277
  - Federal funds sold and securities purchased under agreements to resell (corresponds to item 8 above) 1,981
  - Total loans (corresponds to item 9 above) 8,515
  - Total deposits (corresponds to item 24 above) 17,125
  - Time deposits (corresponds to item 24 above) 17,125
  - Other liabilities for borrowed money (corresponds to item 26 above) None
  - Standby letters of credit outstanding None
  - Time deposits of \$100,000 or more (corresponds to item 24 above) None
  - Time certificates of deposit in denominations of \$100,000 or more (corresponds to item 24 above) 1,172
  - Other time deposits in amounts of \$100,000 or more None
- Bobby Ray Kinison, Vice President & Cashier of the above-named bank, has this report of condition true and correct, to the best of my knowledge and belief.

Director: [Signature] State of Texas, County of Tyler, July 19, 1976



You don't have to steal to have Prosperity. Come in to Citizens State Bank and talk to one of our loan officers. They can solve your money problems in a hurry.

## CITIZENS STATE BANK

FDIC

# Acceptance ON HEALTH

For the past several months, personnel through-out the Texas Department of Health Resources, public health regions, and local health departments have been building up to the massive effort required for a successful National Influenza Immunization Campaign.

## Dairy Queen

# Breakfast Menu

6 a.m. - 10 a.m.

ONE EGG ANY STYLE	\$.79
With Bacon, Ham, or Link Sausage	1.79
With 1/2 Order Bacon, Ham, or Link Sausage	1.29
TWO EGGS ANY STYLE	.99
With Bacon, Ham, or Link Sausage	1.99
With 1/2 Order Bacon, Ham, or Link Sausage	1.49
[Above Served with Grits or French Fries, Toast & Jelly]	
— Extra Egg — \$ .30 —	
TWO HOT CAKES	.85
With Bacon, Ham, or Link Sausage	1.85
With 1/2 Order Bacon, Ham, or Link Sausage	1.35
THREE HOT CAKES	1.25
With Bacon, Ham, or Link Sausage	2.25
With 1/2 Order Bacon, Ham, or Link Sausage	1.75

## THE HARTFORD

YOUR Independent AGENT

Globe-Mann Ins. Agency

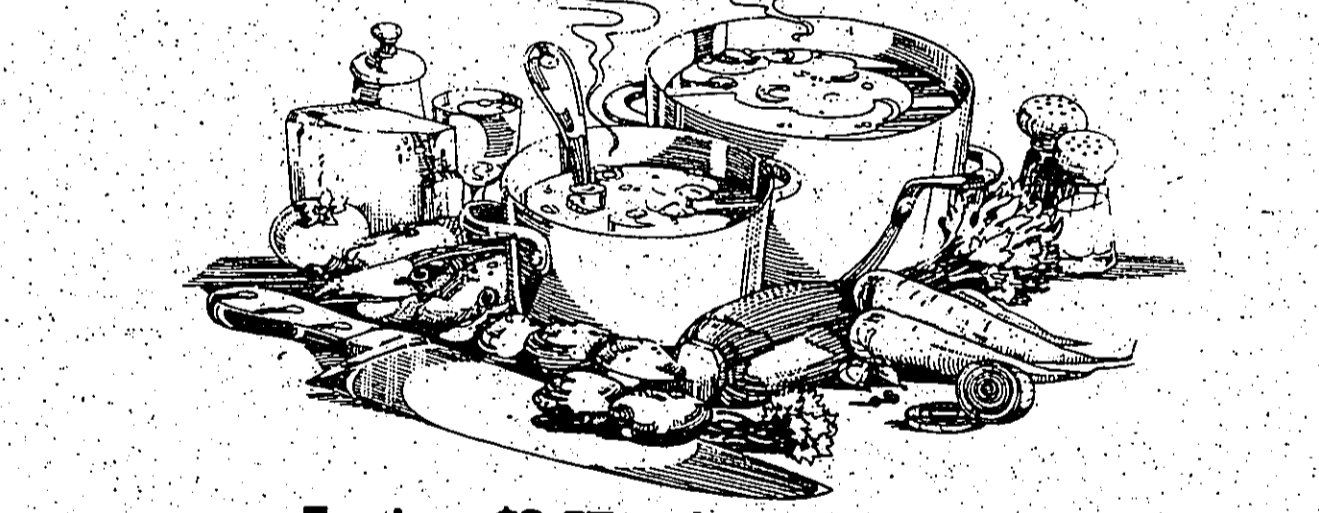
Woodville, Texas Call 283-2528 Tom McGuire, Mgr.

Served with Syrup & Butter

DRY PIE	30	REG. TOAST & JELLY	40
HOT CEREAL	35	TEXAS TOAST & JELLY	40
COFFEE	15	JUICE	35
HOT CHOCOLATE	25		35

1308 W. Bluff

# Enjoy a 10-minute call to Boston without shelling out a lot of clams.



For just \$2.57 or less, you could take down these recipes by Long Distance. We're printing these chowder recipes to make a point: a Long Distance call lets you say so much, for so little. In a 10-minute call to Boston, between 5 p.m. and 11 p.m. tonight, you could easily take down the recipes below. And by dialing 1-800-555-5555, you could easily take down the recipes below. And by dialing 1-800-555-5555, you could easily take down the recipes below. And by dialing 1-800-555-5555, you could easily take down the recipes below.

### 1. FISHERMEN'S CATCH CHOWDER

2 tbsp. butter or margarine  
1/2 cup finely chopped onion  
1/2 cup finely chopped celery  
1/2 cup finely chopped carrot  
1/2 cup finely chopped potato  
1/2 cup finely chopped parsley  
2 cups crushed dried rosemary  
1 can (14.5 oz.) whole tomatoes, drained (reserve liquid)  
1/2 cup white wine  
1 bottle (8-oz.) clam juice  
1 1/2 tsp. salt  
3 tbsp. flour  
3 tbsp. softened butter or margarine  
6 oz. round or ocean perch  
6 oz. pilae or rainbow trout  
6 oz. haddock or halibut  
6 oz. mixed clams (opt.)  
1/2 cup light cream

Heat the first 5 ingredients in Dutch oven until bubbly; reduce heat and cover. Simmer 15 minutes.  
Chop tomatoes; stir tomatoes, reserved liquid, wine, clam juice and fish into vegetables in Dutch oven. Heat to boiling; reduce heat and cover. Simmer 10 minutes.  
Mix flour and 3 tbsp. butter until smooth; stir into chowder. Cook and stir until slightly thickened.  
Cut fish into 1-inch pieces, and add to chowder. Heat to boiling; reduce heat. Simmer uncovered until fish flakes easily with fork, 8-10 minutes. Remove from heat. Stir in cream.  
Ladle chowder over sliced, toasted French bread. Garnish with sliced parsley. (Makes six 1 1/2 cup servings.)

### 2. SEAFOOD CHOWDER

3 cups water  
2 cups chopped pared potatoes  
1 cup chopped celery  
1/2 tsp. salt  
1/2 cup softened butter or margarine  
1/2 cup ground allspice  
1/2 cup butter or margarine  
1/2 cup white sauce  
2 cups milk  
1 lb. cod fillets  
1 tsp. dried basil weed (optional)  
1 cup chopped unpeeled sweet potatoes  
2 tbsp. lemon juice  
1/2 tsp. paprika  
1 hard-cooked egg, sliced

Heat first 8 ingredients in saucepan to boiling; cover. Boil until vegetables are tender, 10-12 minutes. Drain vegetables, reserving 1/2 cup liquid.  
Melt butter in Dutch oven; stir in flour. Cook over low heat, stirring constantly, until mixture is smooth and bubbly. Remove from heat and stir in milk and reserved broth. Heat to boiling, stirring constantly. Cut cod into 1-inch pieces; stir into mixture. Add oil. Heat to boiling; reduce heat. Simmer uncovered until fish flakes easily with fork, about 8 minutes.  
Stir in chowder, lemon juice, paprika and vegetables into chowder. Heat until hot. Garnish with sliced egg. (Makes eight 1 1/2 cup servings.)

Long Distance What else is so nice for the price?

Southwestern Bell

# Hillister News

By Mrs. W. G. Haynes

Mr. and Mrs. Leo Blhms of Groves were here Monday to see her father, Henry Schenckwitz and Mrs. Schenckwitz.

Mr. and Mrs. Tom Grayham and Thomas of Livingston and David DeRamus of Lumberton were weekend visitors in the J.W. DeRamus home.

Visiting in the home of Mr. and Mrs. E.R. McGuire during the weekend were their son Larry McGuire and family, and Rev. and Mrs. Delman Rogers all of Groves.

Mr. and Mrs. Lee Norton enjoyed a visit in Crystal Beach during the week. Friends of Mrs. Lee Norton visited her son and family in San Antonio and attended the wedding of a granddaughter, then went to Dallas for a visit with her daughter, Mrs. Ben Swearingen of Beaumont.

Mr. and Mrs. S.E. Holt were in Oklahoma City and attended the wedding of their daughter, Susan Wayne Miller of Nederland came Friday and took her father J.H. Miller in Orange in see his sister Mrs. Ida Bobbitt.

Mr. and Mrs. Leo Blhms of Groves were here Monday to see her father, Henry Schenckwitz and Mrs. Schenckwitz.

Mr. and Mrs. Tom Grayham and Thomas of Livingston and David DeRamus of Lumberton were weekend visitors in the J.W. DeRamus home.

Visiting in the home of Mr. and Mrs. E.R. McGuire during the weekend were their son Larry McGuire and family, and Rev. and Mrs. Delman Rogers all of Groves.

Mr. and Mrs. Lee Norton enjoyed a visit in Crystal Beach during the week. Friends of Mrs. Lee Norton visited her son and family in San Antonio and attended the wedding of a granddaughter, then went to Dallas for a visit with her daughter, Mrs. Ben Swearingen of Beaumont.

Mr. and Mrs. S.E. Holt were in Oklahoma City and attended the wedding of their daughter, Susan Wayne Miller of Nederland came Friday and took her father J.H. Miller in Orange in see his sister Mrs. Ida Bobbitt.

# DIRECT FURNITURE DISCOUNT

302 N. Magnolia Woodville, Texas 283-5211

BUY DIRECT AND SAVE!!!!

This ad appeared in an out-of-town paper We Sell for LESS

We Can Do Better

# IF YOUR OLD AIR CONDITIONER CAN'T STAND UP TO SUMMER...

TAKE 3 LOOKS AT THESE

## Whirlpool

AIR CONDITIONER

# WINDOWS

Some Air-Conditioners Cost plus 15%

COOL EXTRAS — Whirlpool stands behind its products with a nationwide franchised and trained TECH-CARE™ service organization — the COOL-ALINE™ — for the telephone service you information about: explaining, making, or servicing your Whirlpool air-conditioner.

THE COLD FACTS

- 5,000 BTU/Hr. capacity — (6 E.E.R.)
- 3-speed fan
- Optional 4-way air direction setting (Automatic fan and thermostat)
- 2-way air direction
- Air change control (EXHAUST)
- COMFORT GUARD™ control
- Insta-Mount installation

THE HOT PRICE \$199.95

Model ADF-P50-2

Model ADF-12-54 \$359.95

Model ADF-18-04 \$429.95

12,500 / 12,200 BTU/Hr. capacity — (6.6 E.E.R.) 4-speed fan 4-way air direction Air change control (EXHAUST) COMFORT GUARD™ control

18,000 / 17,500 BTU/Hr. capacity — (6.6/6.5 E.E.R.) 4-speed fan 4-way air direction Air change control (EXHAUST) COMFORT GUARD™ control

# MANN FURNITURE

206 W. Bluff Woodville, Texas since 1910 283-3740



**BIG STAR**  
HOME OWNED AND HOME OPERATED

**MEATS**  
**BEST PRICES**  
**FRYERS**  
\* WHOLE BASKETS **41<sup>c</sup>** LB.  
\* PARTS: LEGS \* THIGH **79<sup>c</sup>** LB.  
\* BREAST \* LIVER \* GIZZARD

**SALE**  
HYDE PARK  
FULLY COOKED SMOKED Picnics **69<sup>c</sup>** LB.  
BRYAN'S SMO. ROPE-STYLE Sausage **\$1.29** LB.  
ARMOUR CAMPFIRE Hot Links **89<sup>c</sup>** LB.  
HYDE PARK BACON **\$1.09** 12 OZ.  
HORNEL CORN-DOGS **\$1.09** LB.  
RATH MEAT-OR-BEEF Wieners **69<sup>c</sup>** LB.  
HYDE PARK WAFER-THIN Slt. Meats **39<sup>c</sup>** LB.

**HEAVY BEEF SALE**  
CHUCK STEAK **79<sup>c</sup>** LB.  
SHOULDER RND. Roast **99<sup>c</sup>** LB.  
BONELESS STEW MEAT **\$1.29** LB.  
**CHUCK ROAST 69<sup>c</sup>** LB.

**BIG STAR**  
JULY 21 thru 27  
**BEEF LIVER 49<sup>c</sup>** LB.

**DAIRY**  
HYDE PARK BISCUITS **8** 8 OZ. **\$1**  
KRAFT (SINGLES) AMERICAN SWISS PINEATED CHEESE **99<sup>c</sup>** 12 OZ.  
SOFT PARKAY **59<sup>c</sup>** (2-8 OZ.) -or- (MAXI) 1 B.

**FROZEN**  
Cool Whip **59<sup>c</sup>** 9 OZ.  
MINUTE MAID ORANGE 3/4 JUICE **99<sup>c</sup>** 6 OZ.  
BANQUET CREAM PIES **49<sup>c</sup>** 14 OZ.  
THORNTON'S GLAZED DONUTS **79<sup>c</sup>** 14 OZ.

**NON-FOODS**  
YODLERS PAMPERS **\$1.29** 24 CT. NO-STICK SPZAT  
PAM **89<sup>c</sup>** 9 OZ.  
LIQUID AJAX **99<sup>c</sup>** 28 OZ.  
DISHWASHER FINISH **\$1.69** 65 OZ.  
REG. OR LEMON CRYSTAL WHITE **79<sup>c</sup>** 48 OZ.  
WALDORF TISSUE **79<sup>c</sup>** 4 ROLL  
MAXI-PADS STAYFREE **\$2.49** 48 CT.  
HYDE PARK TOWELS **49<sup>c</sup>** 170 CT.

ENTER EACH WEEK.  
**WIN FREE CASH**  
**100.00**  
THIS WEEK IN OUR BIG CASH POT!!!  
NO PURCHASE NECESSARY  
WIN THIS WEEK -- GET THOSE CARDS PUNCHED.  
YOU'RE CARD DOESN'T HAVE TO BE PUNCHED FOR EVERY WEEK -- ONLY THE LAST WEEK!

**SAVER BOOK SPECIALS**  
MAXWELL HOUSE COFFEE **99<sup>c</sup>** 1 LB. WITH FILLED SAVER BOOK  
INSTANT MAXWELL HOUSE COFFEE **\$1.99** 10 OZ. WITH FILLED SAVER BOOK  
CARNATION COFFEEMATE **29<sup>c</sup>** 11 OZ. WITH FILLED SAVER BOOK

**GROCERY**  
SUNSHINE HYDROX Cookies **79<sup>c</sup>** 13 OZ.  
KRAFT SMO. BARBEQUE SAUCE **59<sup>c</sup>** 18 OZ.  
KRAFT GRAPE JELLY-or-JAM **69<sup>c</sup>** 13 OZ.  
KRAFT REG. BARBEQUE SAUCE **59<sup>c</sup>** 18 OZ.  
MRS. BUTTERWORTHS PANCAKE SYRUP **69<sup>c</sup>** 12 OZ.  
TEXSUN UNSWT. GRAPEFRUIT JUICE **49<sup>c</sup>** 45 OZ.  
HUNT'S HALVED PEARS **99<sup>c</sup>** 3/16 OZ.  
BUSH'S BAKED BEANS **99<sup>c</sup>** 3/16 OZ.  
ROSEDALE LIMA BEANS **99<sup>c</sup>** 3/16 OZ.  
BETTY CROCKER STIR & FROST CAKE MIX **69<sup>c</sup>** 13 OZ.

**HYDE PARK**  
CREAM-STYLE CORN **4/99<sup>c</sup>** 16 OZ.  
GREEN GIANT SWEET PEAS **3/99<sup>c</sup>** 17 OZ.

SUNSHINE VANILLA WAFERS **49<sup>c</sup>** 11 OZ.  
KRAFT MAC. & CHEESE Dinner **59<sup>c</sup>** 14 OZ.  
SUNSHINE HYDROX Cookies **79<sup>c</sup>** 13 OZ.  
SUNNY-DALE RICE **99<sup>c</sup>** 5 LB.

HAVOLINE MOTOR OIL **39<sup>c</sup>** QT.  
AJAX **4/99<sup>c</sup>** 14 OZ.  
\* LIMIT 5 CANS \*

**GIANT DETERGENT**  
**FAB 99<sup>c</sup>** 49 OZ.

**VAN CAMPS**  
**PORK & BEANS 3/99<sup>c</sup>** 16 OZ.

**CRISCO** W/7.50 GRO. PURCH.  
**99<sup>c</sup>** 48 OZ.  
BEST MAID SALAD DRESSING **59<sup>c</sup>** 32 OZ.

**PRODUCE**  
THOMPSON WHITE SEEDLESS GRAPES **49<sup>c</sup>** LB.  
CRISP GREEN CELERY **39<sup>c</sup>** BUNCH  
RED RIPE TOMATOES **39<sup>c</sup>** LB.  
WASH. RED DEL. APPLES **39<sup>c</sup>** LB.  
SWEET JUICY Cantaloupe **39<sup>c</sup>** EA.  
LARGE CALL ORANGES **10<sup>c</sup>** EA.

**COUPON** No. 78133-15  
**GOLD MEDAL FLOUR 79<sup>c</sup>** 5 LB. REG. \$1.05  
AT: BIG STAR  
VOID: 7/27/76

**LIQUID DETERGENT**  
**SAV-49<sup>c</sup>** 32 OZ.

**COUPON**  
100 FREE QUALITY STAMPS  
W/PURCH. OF 5LB. RUSSET POTATOES  
AT: BIG STAR  
VOID: 7/27/76  
LIMIT 1 COUPON

**COUPON**  
100 FREE QUALITY STAMPS  
W/PURCH. OF 3LB. OR MORE GROUND MEAT  
AT: BIG STAR  
VOID: 7/27/76  
LIMIT 1 COUPON

**COUPON**  
100 FREE QUALITY STAMPS  
W/PURCH. OF 7 OZ. BREGG SHAMPOO NORM. OIL DRY  
AT: BIG STAR  
VOID: 7/27/76  
LIMIT 1 COUPON

**COUPON**  
100 FREE QUALITY STAMPS  
W/PURCH. OF 4.5 OZ. AIM TOOTHPASTE  
AT: BIG STAR  
VOID: 7/27/76  
LIMIT 1 COUPON

**COUPON**  
100 FREE QUALITY STAMPS  
W/PURCH. OF RIGHT GUARD DEODORANT 7 OZ. REGULAR  
AT: BIG STAR  
VOID: 7/27/76  
LIMIT 1 COUPON

**COUPON**  
100 FREE QUALITY STAMPS  
W/PURCH. OF RIGHT GUARD TALC 7 OZ.  
AT: BIG STAR  
VOID: 7/27/76  
LIMIT 1 COUPON

**COUPON**  
100 FREE QUALITY STAMPS  
W/PURCH. OF NON-ASPIRIN TYLENOL 100 CT.  
AT: BIG STAR  
VOID: 7/27/76  
LIMIT 1 COUPON

**COUPON**  
100 FREE QUALITY STAMPS  
W/PURCH. OF MOUTHWASH LISTERINE 7 OZ.  
AT: BIG STAR  
VOID: 7/27/76  
LIMIT 1 COUPON

**COUPON**  
100 FREE QUALITY STAMPS  
W/PURCH. OF PLASTIC PITCHER GAL. SIZE  
AT: BIG STAR  
VOID: 7/27/76  
LIMIT 1 COUPON

**COUPON**  
100 FREE QUALITY STAMPS  
W/PURCH. OF PLASTIC PITCHER GAL. SIZE  
AT: BIG STAR  
VOID: 7/27/76  
LIMIT 1 COUPON

# OBITUARY

## George Milton Carr

WOODVILLE--Funeral services for George Milton Carr, 81, of Woodville were held at 11 a.m. Monday, July 19, 1976 in the Edwards Funeral Home Chapel with the Rev. Charles Haynes officiating. Burial was in the Damascus Cemetery in Polk County.

Carr died Saturday, July 17 in the Tyler County Hospital after a long illness.

A native of Lufkin, he had made his home in Woodville for the past 14 years. He was retired from the Carter Lumber Co. near Camden and a member of the Baptist Church. He was a veteran of WWI.

Survivors include his wife, Mrs. Zula Mae Carr of Woodville; seven daughters, Mrs. Georgia Mae Dominy, Mrs. Barbara Reynolds, Mrs. Dorothy Joseph, and Mrs. Yergie F. Miss all of Woodville, Miss Carolyn Carr of Nederland, Mrs. Frances Daley of Port Arthur and Mrs. Jessie Pugh of Galveston; one brother, Elma Carr of Houston; one sister, Mrs. The Harper of Kirbyville; sixteen grandchildren and nine great grandchildren.

Pallbearers were B.E. Carr, John W. Carr, H.L. Capps, Hubert Whitehead, David Lee Seals and Larkin Seals.

## Laura Odom Egan

WOODVILLE--Funeral services for Laura Odom Egan, 91, of Woodville were held at 2 p.m. Sunday, July 18, in the chapel of Edwards Funeral Home with the Elders Admett, Alvin Torres and Delmer Partie officiating. Burial was in the Fairview Cemetery east of Woodville.

Mrs. Egan died Friday, July 16 in the Woodville Convalescent Center in Woodville. A native of Cuba, Ala., she had made her home in Woodville for a number of years. She was a member of the Church of Jesus Christ of Latter Day Saints.

Survivors include three sons, Mitchell Egan of Orlando, Florida, Howard Egan of Fort Worth and Leroy Egan of Salt Lake City Utah; and one brother, Tommie Odom of Buna.

Pallbearers were Marvin Cowart, Gary Cowart, Milton Odom, Marun Cowart, Tim Durr and Willard Stafford.

## Vernon Gilbert Sturrock

HOUSTON--Funeral services for Vernon Gilbert Sturrock, 71, of Houston, were held at 2 p.m. Friday, July 16, 1976 at the Edwards Funeral Home Chapel with the Rev. Charles Haynes officiating. Burial was in the Colmesneil Cemetery.

Sturrock died at 1 p.m. Wednesday, July 14, 1976 in the Parkway Hospital in Houston after a short illness.

A native of Tyler County he had made his home in Houston for the past 15 years. He was a security guard for the Federal Security and a member of the Baptist Church.

Survivors include his wife, Mrs. Pearl Sturrock of Houston; four daughters, two brothers, R.M. Sturrock of Woodville and Lester Sturrock of Corrigan; and one sister, Mrs. Orla Beaumont of Lakeview.

Pallbearers were Cecil Ogden, Charles Fortenberry, Ronald Minyard, Jerry Minyard, Bower Durham and Roy Yarborough.

## Harry Newton Adams

WOODVILLE--Funeral services for Harry Newton Adams, 81, of Woodville were held at 11 a.m. July 16, 1976 at the Woodville United Methodist Church with Dr. Raymond A. Parker officiating. Masonic graveside services were held at the Magnolia Cemetery in Woodville.

Adams died at 10:40 a.m. Wednesday, July 14, 1976 in the Baptist Hospital in Beaumont after a long illness.

A native of Kahokah, Missouri, he had made his home in Woodville and Colmesneil since 1904. A retired foreman for a road construction company he was a member of the Woodville United Methodist Church, the Yellow Pine Masonic Lodge #679 of Colmesneil and a member of the Woodville Order of the Eastern Star #462.

Survivors include his wife, Mrs. Verra Butler Adams of Woodville; one daughter, Mrs. Molly Adams Billingsley of Nederland; one brother, Luther Adams of Lubbock; two sisters, Mrs. Lenna Watts and Mrs. Eula Lindsey of Mabank, Tex.; two granddaughters, Andrea Billingsley of Nederland and Becky Billingsley of Beaumont.

Pallbearers were Butler Jackson, Herbert Sutton, Leroy Davis, Harry Johnson, Bobby Bendy, W.E. Horton, Elmer Swiner, Bernice Roberts, Cecil Ogden and Dr. Martin Nellius.

## Mary Louise Carter Ling

COLMESNEIL--Funeral services for Mary Louise Carter Ling, 69, of Colmesneil, were held at 11 a.m. Thursday, July 15, 1976 in the Edwards Funeral Home Chapel with Rev. John McKee officiating. Burial was in the Colmesneil Cemetery in Colmesneil.

Mrs. Ling died at 9:15 Tuesday, July 13, 1976 at the Holiday Pines Lodge Nursing Home in Woodville.

A native of Humble she had made her home in Colmesneil for the past 30 years. She was a member of the Congregational Methodist Church.

Survivors include her husband Moses Ling of Colmesneil; one son, Grady Perkins of Houston; two daughters, Mrs. Betty Batson of Houston, and Mrs. Carol Sue Dean of Chester; one sister, Mrs. Alice Philmon of Houston; eight grandchildren and five great grandchildren.

Pallbearers were Clifford Ray Perkins, George Gasca Jr., Lonnie E. Apshire, G.M. Carter, W.S. Carter and Robert Richardson.

## Gospel Concert Set For Mt. Carmel Church

COLMESNEIL--The Mt. Carmel Baptist Church will host a Gospel Concert, Saturday, July 24, beginning at 7:30 p.m.

Featured groups will include the Good News Singers from Athens and the Masters, Brothers from Houston.

No admission will be charged, and refreshments will be served according to J.B. Smith, chairman.

## Woodville O.E.S. 462 Calls Meeting for July 26

WOODVILLE--The Woodville Chapter #462, of initiation. Members and Order of the Eastern Star, visiting members are cordially invited.

## "Be Really Concerned"

Write to "Reaching Out" The Evangelistic Ministry, Star Rt. 1 Box 82 Woodville, Tx. 75799. There is help for the following: (1) Problem drinker and his family (2) The youth or adult who could be rehabilitated (3) The abused child (4) The Forgotten Elderly Howard E. Dowden, Minister

## FAIRVIEW BAPTIST CHURCH

Woodville, Jimmy Owens, pastor; Sunday school 9:45 a.m.; Worship 11:00 a.m.; Church Training 6:00 p.m.; Thursday GA's and Acteens 4:00 p.m.

## BEECH CREEK BAPTIST, E.C. Holland, pastor; Sunday School 10 a.m.; morning worship 11:00 a.m.; Evening Worship 7:00 p.m.; Wednesday Prayer service 7:30 p.m.

## FIRST BAPTIST CHURCH, Woodville

Corner of Wheat and Charlton; Ph. 283-2795. Dr. Raymond Parker, Pastor, Sunday School 9:40 a.m.; Worship Services 10:50 a.m. and 7 p.m.; Youth Choir, 4:30 p.m.; Children Choir, Wednesday at 4:30 p.m.; RA's and GA's 4:15 p.m.; Prayer Meeting and Bible Study 7:15 on Wednesday.

## COBB MILL ROAD BAPTIST CHURCH, Woodville W.C. Haynes, Pastor, Sunday School 10 a.m.; Morning Worship 11 a.m.; Training Union 6 p.m.; Evening worship 7 p.m.; Wednesday GA's 6 p.m.; Prayer Meeting 7:30 p.m.

## FIRST BAPTIST CHURCH, Warren

Kenneth Cauthen, Pastor, Sunday school 9:45 a.m.; Morning Worship 11 a.m.; Church training 6 p.m.; Evening worship 7 p.m.

## ROCKLAND REVIVAL CENTER, Rockland, Texas, Rev. Kirbbie L. Cowart, Pastor, Services Thursday night 7:30 p.m.; Sunday morning worship 10:00 a.m.

## NEW SHILOH BAPTIST CHURCH West of Woodville, Maeford Lawson, Pastor, Sunday School 9:45 a.m.; Morning worship 11 a.m.; Evening worship 6:30 p.m.

## ROCKLAND BAPTIST CHURCH, Rev. Dan Eakin, pastor, J.B. Dean, Music director, Sunday School 10:00 a.m.; Worship services 11:00 a.m.; Evening Worship 6:00 p.m.; Midweek Prayer Services Wednesday 7 p.m.; Baptist Men, meet every first Thursday at 7:00 p.m.

## PLEASANT VALLEY BAPTIST CHURCH Services 1st, 3rd and 5th Sunday, C.S. Read, Pastor. Song services 10:30 a.m.; Worship Services 11:15 a.m.; Mrs. Grace Davidson, song director, Mrs. Eva Lee Flynn, pianist.

## FIRST SHILOH CHURCH: Services every 1st, 3rd and 5th Sunday in month. Bro. Ernest Martin Pastor. Services begin at 10:45 a.m. promptly. Midweek prayer service Wednesday 7 p.m.; Everyone welcome.

## KATY BAPTIST CHURCH, Colmesneil Sunday School 10 a.m.; Worship Service 11 a.m.; Evening worship 6:30 p.m.; Wednesday Prayer meeting 7:00 p.m. Durl Patrick, Pastor.

## CALVARY BAPTIST CHURCH: Rev. Jimmy Dean, Pastor, Sunday School 9:45 a.m.; Morning Worship 11 a.m.; Training Union 6 p.m.; Evening service 7 p.m.; Wednesday Prayer Meeting 7 p.m.

## FIRST BAPTIST CHURCH of Hillister Henry Shuttles, pastor, Sunday School 9:45 a.m.; Morning worship 11 a.m.; Training Union 6 p.m.; Evening worship 7 p.m.; Wednesday prayer meeting 7 p.m.

## CHURCH OF CHRIST WOODVILLE-CHURCH OF CHRIST: Hwy 190 west. Sunday bible school 10 a.m.; Morning Worship 11 a.m.; Evening worship 6 p.m.; Wednesday Bible study and worship 7 p.m.; Everyone is welcome.

## J.B. Best & Co. CLOTHING & SHOES FOR YOUR FAMILY

## Tyco Feed Co. FEED & FERTILIZER WOODVILLE

## Davis Food Market Ph. 547-3339 WARREN

## Woodville Convalescent Center Ph. 283-2555 102 N. Beach

## Ogden Chevrolet COLMESNEIL Ph. 837-2244

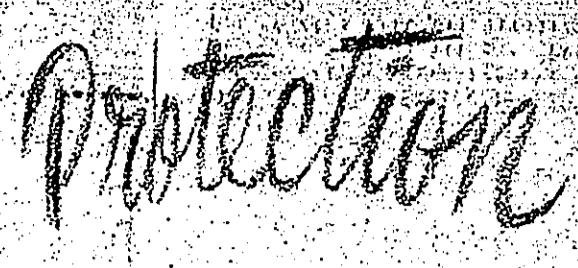
## McClure Furniture WOODVILLE Ph. 283-2519

## Southeast Texas Savings & Loan

## Jarrott's Pharmacy 205 S. Magnolia Ph. 283-2550

## CITIZENS STATE BANK

## STOP-CAUTION-GO



The signal light is man's guide to safer travel. However, they protect only as they are obeyed. The Bible is God's Signal light and guide for man's path through life. "Thy word is a lamp unto my feet, and a light unto my path." Through study of God's word, we learn His will for our life, and He will lead in paths of righteousness. ATTEND CHURCH.



The Church is God's appointed agency in this world for spreading the knowledge of His love for man and of His demand for man to respond to that love by loving his neighbor. Without this grounding in the love of God, no government or society or way of life will long persevere and the freedoms which we hold so dear will inevitably perish. Therefore, even from a selfish point of view, one should support the Church for the sake of the welfare of himself and his family. Beyond that, however, every person should uphold and participate in the Church because it tells the truth about man's life, death and destiny; the truth which alone will set him free to live as a child of God.

## NEW HOPE BAPTIST CHURCH: 5 miles east of Warren, off F.M. 1943 in New Hope Community; Wayne Watkins Pastor Sunday school 9:45 a.m.; Worship 11 a.m.; 10:45 a.m. promptly. Midweek Prayer Services 6:00 p.m.; Wednesday Prayer Meeting 7 p.m.

## WOODVILLE MISSIONARY BAPTIST CHURCH: Calvin Gould, pastor; Sunday school 10 a.m.; Morning worship 11 a.m.; Bible study 6 p.m.; Evening worship 7 p.m.; Wednesday prayer meeting 7 p.m.

## MIDWAY MISSIONARY BAPTIST CHURCH: FM 1943, 10 miles east of Warren 6 miles West of Fred. Bro. Rayburn Pickering, Pastor, Sunday School 9:45 a.m.; Morning worship 10:45 a.m.; Training service 5:30 p.m.; Evening worship 6:30 p.m.; Wednesday Prayer Meeting 7 p.m.

## EBENEZER BAPTIST CHURCH: Sunday school 10 a.m.; Worship 11:00 a.m.; Evening worship 6:00 p.m.; Wednesday evening worship 7:00 p.m. Pastor, Lloyd Mahaffey.

## CATHOLIC OUR LADY OF THE PINES CATHOLIC CHURCH: Rev. Bennie Patillo, Pastor, 1623 Pine St., Hwy. 287, Saturday Mass 7:30 p.m.; Sunday Mass 8:30 a.m.; Monday Communion 7:30 a.m.; Tuesday Mass 6:30 p.m.; Wednesday thru Friday Mass 7:30 a.m.

## CHRISTIAN CHURCH FIRST CHRISTIAN CHURCH (Disciples of Christ), Clyde Bennett, Minister; 109 N. Charlton, Church School 9:45 a.m.; Worship 10:45 a.m.; other meetings as announced.

## EPISCOPAL ST. PAUL'S EPISCOPAL CHURCH: Hwy. 190 Dr. George Floyd, Vicar, Sunday services 8:30 a.m.; 1st and 3rd Morning Prayer; 2nd and 4th Holy Communion. Further information call 283-2544.

## METHODIST SPURGER UNITED METHODIST: Pastor, Eric Williams, Sunday School 9:45 a.m.; Morning Worship 11 a.m.; Evening worship 7:30 p.m.

## WOODVILLE UNITED METHODIST CHURCH: David A. Hutchins, pastor; Sunday school 9:45 a.m.; Morning Worship 10:50 a.m.; UMYF meeting 5:30 p.m.; Evening worship 7 p.m.

## CHESTER MOUNT HOPE UNITED METHODIST CHURCH, Chester, Rev. Jesse Adams, pastor, Worship service 11 a.m.; Evening worship 6 p.m.; Church school 10 a.m.; Bible study 7 p.m.; (Each Wednesday - Mt. Hope Service 11 a.m.) (fourth Sunday).

## WARREN UNITED METHODIST CHURCH: Rev. E. Davis Powell III, Minister, Sunday School 10:00 a.m.; Morning Worship 11:00 a.m.

## CHURCH OF JESUS CHRIST OF LATTER DAY SAINTS CHURCH OF JESUS CHRIST OF LATTER DAY SAINTS, Woodville, Priesthood 9 a.m.; Sunday school 10:30 a.m.; Sacrament meet 5:30 p.m.; presented by Noah Lee Crosby.

## APOSTOLIC APOSTOLIC TABERNACLE, a United Pentecostal Church, Rev. E. L. Thornton, pastor, school 10 a.m.; Evening Services 7:30 p.m.; Sunday Bible study 7:30 p.m.

## PENTECOSTAL PENTECOSTAL - HAMPTON HILL, 1 mile east of Chester, James Troy Loving, pastor, Services Saturday 7:30 p.m.; and Sunday; Sunday School 10 a.m.; Morning Worship 11 a.m.; and Evening Worship 7:30 p.m.

## WARREN UNITED PENTECOSTAL CHURCH: Sunday school 10 a.m.; Sunday night: Evangelistic Service 7 p.m.; Bible Study Thursday 7:30 p.m.; Youth Service Saturday 7:30 p.m. Pastor Jesse LeBlanc.

## ASSEMBLY OF GOD HILLISTER ASSEMBLY OF GOD CHURCH: Rev. D.K. Martin, pastor; Sunday School 10 a.m.; Worship service 11 a.m.; Young People's service 6 p.m.; Evening worship 6:30 p.m.; Thursday Bible Study 7 p.m.

## SHADY GROVE ASSEMBLY OF GOD CHURCH: West of Woodville, Sister Lela Brown, pastor; Sunday School 10 a.m. Evening worship 6:30 p.m.; Wednesday service for youth 7 p.m.

## ASSEMBLY OF GOD, R.C. Tillery, Pastor, Sunday School 9:45 a.m.; Worship service 11 a.m.; Evening worship 7 p.m.; Wednesday Bible Study 7 p.m.

## OAK GROVE ASSEMBLY OF GOD CHURCH: Sunday Service; Sunday School 9:45 a.m.; Morning Worship 11:00 a.m.; CA at 6:00 p.m.; Evening Service 7:00 p.m.; WMC's 10:00 a.m.; Tuesday, Mid-week Service Wednesday 7:00 p.m.; Located on Hwy. 92 between Fred & Spurger, 429-5050.

### HARMONY BAPTIST CHURCH

Burns Williams, Pastor; Sunday School 10 a.m.; Worship Services 11 a.m.; Evening Worship 6 p.m.; Wednesday 7 p.m.

### BETHEL BAPTIST CHURCH

Warren John Spanhans, pastor; Sunday School 9:45 a.m.; Worship service 11 a.m.; Youth Choir 5:15 p.m.; Training Union 6 p.m.; Evening Worship 7 p.m.; Adult Choir 8:15 p.m.; Wednesday WMU, BA's & GA's 6:30 p.m.

### FIRST BAPTIST CHURCH of Spurger

Jerry Clark, Pastor, Sunday School 9:45 a.m.; Morning worship 11 a.m.; Evening service 7 p.m.; Midweek worship on Wednesday 7:30 p.m.

### FIRST BAPTIST CHURCH of Doucette

Rev. Drew Sheffield, Sunday school 9:45 a.m.; Morning worship 11 a.m.; Training Union 6 p.m.; Evening worship 7 p.m.; Wednesday Prayer meeting 7 p.m.

### PLEASANT HILL BAPTIST CHURCH of Spurger

Rev. L. G. Hooks, Sunday School 9:45 a.m.; Morning worship 11 a.m.; Evening worship 6 p.m.

### TRUE VINE BAPTIST CHURCH

1 mile East of Doucette, Sunday school 9:45 a.m. Worship 11 a.m.; Lord's Supper Sunday 6:30 p.m.; Monday Mission 4 p.m.; Tuesday YWCA 6:30 p.m.; Wednesday, Prayer Meeting, Teachers 7 p.m.

### CHEROKEE BAPTIST CHURCH

services every 2nd and 4th Sunday in the month. Sunday School 10 a.m.; Church 11 a.m.; Everyone welcome. Bro. Ernest Martin, Pastor.

### ROCKY SPRINGS BAPTIST CHURCH

Delmer (Dale) Carter, pastor; Sunday School 10 a.m.; Morning worship 11 a.m.; Training Union 6 p.m.; Evening worship 7 p.m.; Wednesday Prayer Meeting 7:30 p.m. Singing 1st Saturday night of each month. 4th Saturday of each month is Youth-Night.

### MT. CARMEL BAPTIST CHURCH

Jack Lewellen, Pastor, Sunday School 9:45 a.m.; Morning Worship 11 a.m.; Training Union 6:00 p.m.; Evening Worship 7:00 p.m.; Wednesday Prayer Meeting 7:00 p.m.

### CHESTER BAPTIST CHURCH

Chester, Pastor, Barney Bryant; Sunday School 9:45 a.m.; Worship hour, 10:45 a.m.; Training Union 6 p.m.; and evening worship 6:45 p.m.; Church activity groups meet every Monday after school.

### CANEY CREEK BAPTIST CHURCH

Chester, G.M. Standley, pastor; Sunday School 10 a.m.; Morning worship 11 a.m.; Church Training 6 p.m.; Evening worship 7 p.m.; Wednesday services 7 p.m.

### FIRST BAPTIST CHURCH OF COLMESNEIL

NEIL, Sunday school 10 a.m.; Worship Service 11 a.m.; Church Training 6 p.m.; evening worship 7 p.m.; Wednesday WMU 6 p.m.; Prayer Meeting 7 p.m. Pastor, Ron Walling.

### ENON BAPTIST CHURCH

4 miles east of Chester on Hwy. 1745, Larry Trest, pastor, Sunday school 9:45 a.m.; Morning worship 11 a.m.; Training Union and Bible study 6 p.m.; Evening worship 7 p.m.; Midweek Prayer Meeting 7 p.m.; Everyone is welcome.

### Magnolia Drive-In Grocery Service Gas & Appliance Co.

Butane Bottle Filling, operating manager Jerry A. Carruth, Appliance Propane, Ph. 283-5349, Woodville

### Jack Lane Ford

Jack Lane, President, 104 Pine Street, Ph. 283-2526, Res. Ph. 283-2716

### Western Auto Associate Store

Refrigerator Sales & Services

### Brookshire Bros.

WOODVILLE

### Boykin Lumber Co.

Ph. 283-3731, WOODVILLE

### Woodville Inn

WOODVILLE'S FINEST NOON BUFFET DAILY EVERYONE WELCOME!

### A&M Motor Co. Inc.

Ph. 283-2534, WOODVILLE

### Harrington Electric & Plumbing Service

### Jack Lane Ford

Jack Lane, President, 104 Pine Street, Ph. 283-2526, Res. Ph. 283-2716

### Western Auto Associate Store

Refrigerator Sales & Services

### Brookshire Bros.

WOODVILLE

### Boykin Lumber Co.

Ph. 283-3731, WOODVILLE

### Woodville Inn

WOODVILLE'S FINEST NOON BUFFET DAILY EVERYONE WELCOME!

### A&M Motor Co. Inc.

Ph. 283-2534, WOODVILLE