

Dogwood Time In Tyler County

It's OUR Policy To Protect YOUR Family

As your family grows so do your insurance needs. We can help you plan reasonable, lower cost coverage for every need...now and for the future.

Feagin Insurance
283-2242
212 W. Bluff Woodville, Texas

The people of Tyler County for the thirty-fourth year in a row will again pay tribute to "Mother Nature" when the annual Tyler County Dogwood Festival kicks off in Woodville on March 25-26, then winds up the following weekend, April 1-2.

Odds are if you've never experienced Dogwood Time in Tyler County, you'll find it the best excuse to get away from metropolitan areas and experience the fellowship, fun, and good times offered in this County during this Dogwood Festival time.

The festival ceremonies which first started in 1940 are produced as a "collective thank you" to the splendid beauty of Tyler County in the springtime.

The 10-day-long affair has something for everyone beginning with Western Weekend March 25-26, which boasts trailrides, a parade, a real wild west rodeo, and western dances. On April 1-2, you can enjoy art exhibits, crafts fair, dogwood queen's parade, which has some 200 plus entries, the crowning of a Dogwood Queen, an out-



Photo above shows the 1977 Tyler Co. Dogwood operating directors. Seated (left to right): Freddie McClure, Joan Graham and Becky Jinnette. Standing (left to right): Gene Fred Sullivan, Herbert Branch, Ben Worley, George Jarrott, Ronald Watts and Gray Holderman. In the photo below are five of the permanent directors of the festival. From left to right are: J.T. Spitzer, J.E. West, J.B. Coffman, H.G. Sutton and B.M. Miner.

Spring MAGIC with Wallpaper from Warfields

Come by and discover the many uses for our large selection of pre-pasted Wallpaper!

283-2544 210 W. Bluff

Festival Reminders

Parade Entries

Parade entries are sought for the 34th Annual Dogwood Festival Parade set for Saturday April 1 at 2 p.m. in Woodville.

According to Dogwood Festival Director Ben Worley of Warren, "On behalf of the Tyler County Dogwood Festival Directors, I cordially invite all businesses, clubs, and individuals to enter a float in the parade on April 2. We feel your participation would be an integral part of the parade. This year's



Photo above shows the 1977 Tyler Co. Dogwood operating directors. Seated (left to right): Freddie McClure, Joan Graham and Becky Jinnette. Standing (left to right): Gene Fred Sullivan, Herbert Branch, Ben Worley, George Jarrott, Ronald Watts and Gray Holderman. In the photo below are five of the permanent directors of the festival. From left to right are: J.T. Spitzer, J.E. West, J.B. Coffman, H.G. Sutton and B.M. Miner.

COW POKES By Ace Reid

"Here comes Wilbur, the Ex-smartest cow dealer in this part of the country."

WE ONLY MAKE ONE KIND OF DEAL-- A GOOD ONE.

For new cars, vacations, or business reasons, we can make a loan that is just right for you. Talk to our bank today.

CITIZENS STATE BANK
P.O. Box 109 Woodville, Texas 75979
FDIC 283-2561

Kingsmen Meeting

"Time is running out" say Kingsmen coordinators Webb Ashworth and Fred Sullivan as they remind everyone that the First of three nights judging activities will take place this Thursday Feb. 24 at 6:30 p.m. at the Woodville Inn.

All Kingsmen are encouraged to participate as judges in this contest, and are issued the reminder that Kingsmen must be eligible to participate in the final judging on Thursday March 22 at 7 p.m. The second night judging will take place on March 3, at 7 p.m. at the coordinators said.

Dogwood Queen Entries

Dogwood directors expect participation from each of Tyler Counties five major communities and schools.

One lucky girl selected from each community will qualify for a \$250 scholarship.

The girls, during the preliminary judging activity this Thursday, will be vying for one of two titles: either "princess" or "lady-in-waiting." The second night judging on March 3, will decide who the princesses are with the final night's decision on who will represent Tyler County as the Dogwood Queen.

School Menu

WOODVILLE SCHOOL LUNCH MENU: Feb. 28, Mar. 4, 1977

Monday-Macaroni casserole, cabbage slaw, green beans, chocolate pudding, corn bread and milk.

Tuesday-Beef and rice, turkey w/greens, apple cobbler, corn bread and milk.

Wednesday-Turkey dressing, mashed potatoes w/giblet gravy, cranberry sauce, buttered peas, fruit salad, hot-buttered roll and milk.

Thursday-Hamburger on a bun, lettuce & tomatoes, onions & pickles, potato chips, jello w/fruit and milk.

Friday-Frito pie, buttered corn, pinto beans, peas, corn bread and milk.

The macaroni nut is native to Australia, where it is called the Queensland nut.

Branch Office To Open Here

Continued from Page 1

McMillan, and directors J. Glenn Barber, John H. Seale, Don R. Eiland, W.W. McDaniel, State Senator Don G. Adams and Frank Flogies.

Colmesneil Election Set

Voters in the Colmesneil I.S.D. will elect three trustees in the April 2 election to be held at the Community Center.

Two trustees will be elected to three year terms.

Miss Tyler County To Attend Bona Pageant

Miss Tyler County 1977, Maggie Pryor, will be competing in the Bona Pageant at the Woodville, Accompanied by Scott Daniels also Miss Bona pageant judge for the club.

She will be attending the Miss Bona Pageant Saturday night where her manager, Maggie Pryor will serve on the judge's panel.

Waldrep on Dean's List

Jerry D. Waldrep, son of Mr. & Mrs. John Waldrep of Colmesneil, has been placed on the Dean's List for the fall semester, 1976 of Lamar University for his superior

Holiday Pinings

At Holiday Places Lodge we had a great Valentine's Day. Everyone sang for relatives and friends, the Reading Club and the Altar Society of Our Lady of the Pines. All of the Valentine's decorations were up and we had a very nice party. Minnie Sperling baked sugar cookies for refreshments, the residents also had decorated heart shaped cookies, candy hearts, and pink lemonade punch with cherries, and grapes. All went very well and staff had been voting on their favorite resident for Valentine. Sweetheart was very popular. Hurschel Bean and Pearl Swinell won this honor. Marguerite Fricke made a beautiful Valentine's corsage for Pearl and Hurschel. The new pastor at Dan B' Fairview Baptist will preach every fourth Wednesday morning at 10 a.m.



Approaching Marriage

Mr. and Mrs. John R. Durham of Groves would like to announce the forth coming marriage of their daughter, Lauren Faye Durham of Groves to Steven Edward Brown of Colmesneil. The wedding will take place Saturday, April 16, 1977 at 2:00 p.m. at the First Baptist Church of Groves. Rev. Larry D. Fondren will officiate the ceremony. After the marriage the couple will reside at Colmesneil.

Colmesneil News

A number of citizens of Colmesneil enjoyed the monthly supper at the Colmesneil Center Saturday night. The menu consisted of delicious pieces with all the trimmings. Sunday morning is the date for other men's breakfast, also at the center where as usual, good food and good fellowship are shared in abundance.

With Mr. and Mrs. H.A. Crews during the weekend Spring to all the ladies of the New Bethel Baptist Association. The meeting will last from 10 a.m. till 12 noon, with a covered dish luncheon to follow. Everyone is invited.

Approaching Marriage

Mr. and Mrs. John R. Durham of Groves would like to announce the forth coming marriage of their daughter, Lauren Faye Durham of Groves to Steven Edward Brown of Colmesneil. The wedding will take place Saturday, April 16, 1977 at 2:00 p.m. at the First Baptist Church of Groves. Rev. Larry D. Fondren will officiate the ceremony. After the marriage the couple will reside at Colmesneil.

To Meet

On Monday March 14 at the First Baptist Church of Spurger, The Rev. Billy Hutson will teach the home mission book "A Season of Spring" to all the ladies of the New Bethel Baptist Association. The meeting will last from 10 a.m. till 12 noon, with a covered dish luncheon to follow. Everyone is invited.

Personal Mention

Mr. & Mrs. Harley Crews of Colmesneil honored his father, Claude Crews on his 83rd birthday Sunday by their home with a fish dinner. Others helping him celebrate were his grandson Mr. & Mrs. Jimmy Crews, Jim & Kayla and Mr. & Mrs. David Durham. Another great grandson called to wish Happy Birthday to him. Wyatt Walsh, of McAllen. He had just returned home after spending several days here with the Crews while his parents, Carolyn & Warren Walsh were attending a National Growers & Producers Convention in Houston.

Colmesneil News

A number of citizens of Colmesneil enjoyed the monthly supper at the Colmesneil Center Saturday night. The menu consisted of delicious pieces with all the trimmings. Sunday morning is the date for other men's breakfast, also at the center where as usual, good food and good fellowship are shared in abundance.

Mr. & Mrs. Harley Crews of Colmesneil honored his father, Claude Crews on his 83rd birthday Sunday by their home with a fish dinner. Others helping him celebrate were his grandson Mr. & Mrs. Jimmy Crews, Jim & Kayla and Mr. & Mrs. David Durham. Another great grandson called to wish Happy Birthday to him. Wyatt Walsh, of McAllen. He had just returned home after spending several days here with the Crews while his parents, Carolyn & Warren Walsh were attending a National Growers & Producers Convention in Houston.

Dr. Gary E. Tatum Optometrist

ROOM 107 WEDNESDAY 9 a.m. - 5 p.m. WOODVILLE INN. 283-3011

*GLASSES FITTED 283-3011
*REPAIR WORK ON FRAMES
*COMPLETE EYE EXAMINATION
Call any weekday for appointment

THE HARTFORD

YOUR Independent AGENT

John W. Beckman, Jr. 283-3534

Clubs - Mann Ins. Agency

Woodville Garden Club News

The Woodville Garden Club assembled in a recent all day session for the February meeting in the home of Ruth Montague in order to make flowers for the Dogwood Festival.

Each member brought a sack lunch and drinks were served by the hostess. Presenting at the meeting was Benah Schouville and Table of the Day topic was "Growing Palms for House Plants" given by Lola Turner. A short talk was made by Bobbie Phillips on the propagation and care of geraniums. Margaret Lane and Lola Turner were co-hostesses to 10 members and two visitors attending according to Mrs. T.E. Phillips, reporting for the club.

The Good News Singers in Doucette Sunday

This Sunday, Feb. 27, The Good News Gospel Singers from Athens, Texas, will be performing at the First Baptist Church of Doucette, Texas. Rev. Jack Minyard invited everyone to attend the morning service starting at 11 o'clock.

Texas Exes To Meet

David Parsley of Port Arthur, executive council member of the Texas Exes, will be among the guests at the annual round-up of Tyler County Exes on March 1 at 7 p.m. at the home of the local president, Dr. James S. Jinnette.

Buy or Sell Yellow Ribbon Antiques

117 Nellius St. Woodville, Texas

Last Chance to Join Macrame & Oil Painting Classes

Starts Next Week

Supplies * Crafts * Classes * Products

283-2008 Woodville 309 S. Magnolia

DEXTERITY BIRDWELL'S



It's shoes that make the rest of you look good.

DEXTER

If you've got shoes with refined detailing anywhere where it ought to be, and if you've got shoes of rich luster and leather with a solid feel and a generous heel, and if you've got shoes that can make a two-year-old suit look new - then you've got Dexter shoes by Dexter. And you've also got DEXTERITY.

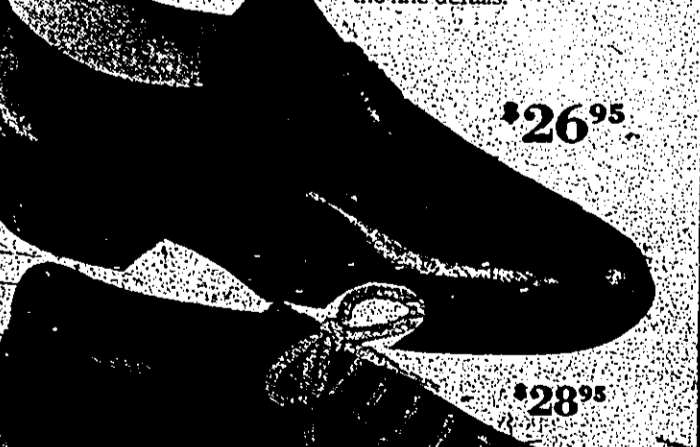
Men's Dexter Dress Shoes \$28.95 to \$26.95

Boys' Corduroy Levi Leisure Suits Reg. \$28.95 SALE \$19.00

All Men's Denim Levis \$8.88

One Rack Men's Suits Values to \$67.88 \$120.00

Men's Levis Corduroy Jeans \$11.00 \$16.00 \$14.00 \$18.00



It's shoes with solid styling and some extra attention to the fine details.

DEXTERITY

Its shoes with solid styling and some extra attention to the fine details.

Men's Dexter Dress Shoes \$28.95 to \$26.95

Boys' Corduroy Levi Leisure Suits Reg. \$28.95 SALE \$19.00

All Men's Denim Levis \$8.88

One Rack Men's Suits Values to \$67.88 \$120.00

Men's Levis Corduroy Jeans \$11.00 \$16.00 \$14.00 \$18.00

Men's Levis Corduroy Jeans \$11.00 \$16.00 \$14.00 \$18.00

Women's Polyester Double Knit New Spring Colors \$1.27

Ladies Dress Shoes 30% OFF

Ladies Polyester Jumpsuits SPECIAL \$1.788

Ladies Polyester Pantsuits \$14.88 \$28.00 Value

BIRDWELL'S OF WOODVILLE

The Tyler County BOOSTER

Published every Thursday by Tyler County Publishing Company, P.O. Box 248, Woodville, Texas 75979. Phone: 283-2561.

Entered as second class matter the Post Office in Woodville, Texas, December 11, 1930 under the act of Congress March 2, 1879. Second class postage paid at Woodville, Texas.

Any erroneous reflection upon the character, standing or reputation of any person, firm or corporation which may be brought to the attention of the publisher, will be corrected upon being brought to the attention of the publisher. Postmaster: Please send from 3579 to P.O. Box 248 Woodville, Texas 75979.

Subscription Rates:
Tyler County \$4.00
Other Texas Cities & Louisiana \$4.50
Outside States \$6.00
Single Copies \$0.10

TEXAS PRESS ASSOCIATION 1977

30-Day Special

1430 Speedex Tractor

44 in. Mower Tool Bar Assembly
10 in. Turning Plow Rear Blade
8 Blade Disc Front Bumper 1/2 ton Dump Cart

\$2490.00

Tyler County Tractor, Inc.

719 S. Magnolia Woodville

CART AWAY FOOD from Grammer's Grocery
SAVINGS 283-2520 1403 W. Bluff Woodville

FEB-24-25-26

- 2# French Fries.....69¢
- 10 oz. Frozen Strawberries.....39¢
- Chef Boy-ar-dee 4 Little Pizzas (Sausage).....99¢
- 1# Bag Carrots.....29¢
- Avocados.....4/1.00
- Lettuce.....39¢ hd.
- Southern Pride Biscuits.....6/79¢
- 1# Elgin Oleo (solid).....39¢
- 12 oz. Trappey's Hot Cherry Peppers.....65¢
- 8# Bucket Mrs. Tuckers Shortening.....3.69
- 10# Gold Medal Flour.....1.69
- 12 Ranch Wagon Red Kidney Beans.....27¢
- Asst. d'H. Burger Helper.....65¢
- 15 oz. Libby's Spanish Rice.....3/1.00
- Parade Paper Towels.....55¢
- 28 oz. Hunts Whole Tomatoes.....75¢

- 16 oz. Veg. All.....2/77¢
- 30 oz. Fruit Cocktail.....75¢
- 1 Gal. Plastic Parade Milk.....1.69

MEATS

- Loose Weiners...lb.....89¢
- Smoked Ham Hocks...lb.....79¢
- Fresh Pan Sausage...lb.....1.19
- Sliced Slab Bacon...lb.....1.39
- Lean Ground Beef...lb.....99¢
- Beef Short Ribs...lb.....79¢
- Round Steak...lb.....1.39
- Arm Roast...lb.....1.19
- Rump Roast...lb.....1.39
- Zummo Bologna...lb.....89¢
- Hormel Pressed Ham...lb.....1.39

Kirby Corner

TRACK BEGINS
 Coach Minter and his girls have been working hard for this year's track team. Coach Houston and the boys team are really looking forward to a successful season also. Their first track meet will be held March 4th and 5th at the Dogwood Relays in Eagle Stadium. We are all anxious to see them.

Bulldog Grows

BASEBALL GAME
 Tuesday the Colmesnell Bulldogs will play the Woodville Eagles at Colmesnell beginning at 3:00. Everyone needs to come out and support the Bulldogs. This is their second baseball game.

SIX WEEKS FINALS
 Hey gang, this is the end of the six weeks period and so that means more tests, so study hard. Just think—only have 3 more months of this school year left.

Bulldog Grows

BASEBALL GAME
 Tuesday the Colmesnell Bulldogs will play the Woodville Eagles at Colmesnell beginning at 3:00. Everyone needs to come out and support the Bulldogs. This is their second baseball game.



In Tournament Action the Woodville Panthers Keep the Kountze Independents Hopping

Booster Club Tourney A Success - Buna Wins

"Hard work" was the name of the game for all the Woodville Coaches for a total of 20 extra hours this weekend. If they seem a little slower in the class rooms and on the fields this week, a little sympathy is probably also needed. Most of them called two to three games a day and then some went willingly from the whistle and other jobs to substitute for teams that had missing players. Max Graham kept forgetting his shorts and could not play, but they found plenty of work for him in the concession stand.

Tomahawk Talk

SCHOLARSHIP AWARDED
 Robert Crawford, WHS senior, is the winner of \$1,000 scholarship awarded by the Houston Livestock Show and Rodeo.

ACTUAL USE REPORT

| GENERAL REVENUE SHARING | ACTUAL CATEGORIES | ON CAPITAL | DISBURSEMENTS |
|-------------------------|--------------------|---------------------------|---------------|
| 1. PUBLIC SAFETY | 2. PROTECTION | 3. TRANSPORTATION | 4. HEALTH |
| 5. LABOR | 6. SOCIAL SERVICES | 7. EDUCATION | 8. HOUSING |
| 9. RECREATION | 10. CULTURE | 11. COMMUNITY DEVELOPMENT | 12. OTHER |

Chester's Bi-District Champs Crawford In Regional Playoff

SAN MARCOS—After winning a first round game 69-40 over the Hutto Hippos, the Chester Lady Jackets were crushed 56-40 by eventual regional champion Crawford in the Region 4 Class B girls basketball playoffs here Friday and Saturday.

New Riding Club In Fred

A new riding club has been organized in the Fred community. They will be known as the "Fred Bush Riders" and are planning family type trail riding. Serving as officers for this charter year will be: Jimmy Taylor, President; Paul Hicks, Vice President; Leon Lopez, Treasurer; and Peewee Rice, Secretary.

Cub Scouts Recruiting Now

Want to join other boys in having fun, taking field trips, learning about new things, and earning awards? If you do, then Cub Scouting is the answer for you, said Mrs. Jan Loidice, an active Den Mother in Woodville.



Chester's Donna Neal goes up for a field goal against Hutto in the Friday night game won by the Lady Jackets 69-48 in the Region 4 tournament in San Marcos. (Photo by John Sniffen)

Friskies DINNERS FOR DOGS (Armaton)
 • Hearty beef flavor
 • Complete nutrition
 • Superior taste

Friskies SAUCE CUBES FOR DOGS (Armaton)
 Just add water for a savory sauce—Makes a delicious nourishing dinner.

Love those Friskies... love those savings!

FRISKIES DINNERS. Every delicious nugget has a hearty beef flavor your dog will love! And it's completely nourishing!

FRISKIES SAUCE CUBES. Just add water. Friskies Sauce Cubes makes a dinner with savory sauce! Complete nutrition.

SAVE 25¢ On any size Friskies Dinners or Sauce Cubes

The Tyler County BOOSTER Sports

More Trout in East Texas

Rainbow trout fishing opportunities in East Texas have recently been expanded through a cooperative effort between the Texas Parks and Wildlife Department and the U.S. Forest Service.

Courier Rebel PLL
 Reg. \$129.95 NOW \$89.95

40 Channels - NOW IN STOCK

CB'S by PEE WEE
 206 N. Magnolia 283-8880

Have You Met This Man?

Lewis Hudson
 Kelly Blvd 283-3724 Woodville, Texas

District Champs Fall to National Playoffs

by John Sniffen

The Saturday loss was primarily due to a first half scoring deluge by Crawford.

and a drought on the part of the Lady Jackets.

"We were cold. We just could not hit shots and they couldn't miss," said Chester coach Steve Evans.

After trailing 38-15 at the half, however, Chester came out in the second half and outscored Crawford, 25-18, but was unable to make up the difference.

"In the second half the girls out-hustled them," said Evans, "but it was just too much to have to catch up. We started doubling up on their ballhandlers and making them shoot. Also, we hit our shots a lot better in the second half."

Possible all-state forward Teresa Botley led the Chester offense with 28 points and was the only Lady Jacket to score in double figures.

In addition to Botley, four other Chester seniors played their final game for the Lady Jackets here. They are forwards Kathy Barnes and Terri Singleton, and guards Lillie Berry and Debra Moye.

Botley also led the Lady Jackets in the Friday night win over Hutto, scoring 38 points. Barnes also hit in double figures with 20 points.

Berry and Lisa Darden led in rebounds with seven each.

The Lady Jackets took an easy 40-23 halftime lead over the Hippos, but slumped in the third period as Hutto outscored them 16-8. Chester put it back under control in the final period, scoring 21 points to the Hippos nine.

The Lady Jackets upset High Island 46-43 in bi-district last Tuesday to enter the regional tournament which was played in Strahan Gym on the campus of Southwest Texas State University.

Chester's final season record is 30-6.

Crawford beat Iols 63-44 Saturday night to take the regional championship. Crawford was rated number one in the State coming into the tournament.

JACKET JIVE

By Sabrina Kriest

For the Lady Jackets, a fine season of hard work, time & effort is over, to show for this they have the district championship, the BI-district championship and went to regional.

The FFA & FHA will have a good week this week on Friday, they will travel to the Fat Stock Show and Rodeo in Houston. They will see K.C. & the Sunshine Band. The bus will leave Chester at 7:00. Also attend-

ing the Fat Stock Show will be the 4-H group who will leave on Saturday & see Mac Davis.

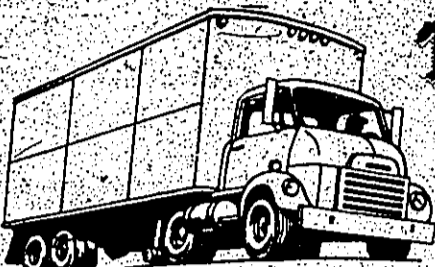
Basketball season has ended and this opens way for Tennis & Track. The first track meet will be March 3&4 the track meet will be held in Woodville. The girls track Coach is Waynette Tolar & the boys track Coach will be Larry Blackerby.

That's all the Jacket Jive for this week see ya later.




Hutto in the Friday night game won in Marcos. (Photo by John Sniffen)


TRUCKLOAD BOOT SALE



Still In Progress

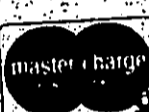


ENTIRE STOCK OF 100% COTTON BLUE DENIM



Shrink-to-Fit Super Bells and Flares

VALUES TO \$8.88 PAIR
\$14.00 NOW



J.B. WHITE CO.

"AHEAD WITH BETTER VALUES"

Saddle Club To Ride

The Tejas Saddle Club of Colmesneil will ride this Sunday, Feb. 27, beginning at high noon. Everyone attending is asked to bring a lunch and meet at Cecil Davis' barn.

'77 FORD EXPLORER SPECIALS



Bright windshield and drip moldings

Bright low-mount mirrors

Special interior

Special metallic paints

Bright exhaust pipe extension

Explorer hood ornament

Ford F-100 Explorer Styleside Pickup

Unique Explorer tape stripes

Bumper guards

Rub strips

Mag-style wheel covers

NEW LOOKS

NEW LOW PRICES

Up To \$250 Off

Beautiful way to save!

\$100* OFF when you pick Explorer package A. The option that gives you the new Ford Explorer look—inside and out. Here's what package A includes:

- Your choice of Special Bright Blue Metallic or Brown Metallic exteriors (other paints are available).

too! • Special interior trim with cloth seat inserts or pleated all-vinyl seat trim. Special door trim panels and color-keyed carpeting.

- Mag-style wheel covers (15" wheels), wheel covers (16.5" wheels on 4x2's) or bright hub caps.
- And... the other features called out above.

\$150* OFF when you purchase package B— including: Everything in Explorer package A.

- SelectShift Cruise-O-Matic.
- Power steering.

\$200* OFF when you choose package C— including: Everything in Explorer packages A and B.

- Air conditioning.
- Tinted glass.

\$250* OFF when you buy A thru D— including: Everything in Explorer packages A, B and C.

- Deluxe Box Cover (all white) for 8-ft. Styleside pickups.

For 1977, the Ford F100 Pickup Truck equipped with the 300 cubic inch 8 cylinder engine and automatic transmission achieved the following gasoline mileage figures as verified by the Federal Government's Environmental Protection Agency (EPA):

| | |
|----------|--------|
| City | 18 MPG |
| Highway | 26 MPG |
| Combined | 21 MPG |

*Based on manufacturer's suggested retail price of options purchased separately, compared to special package prices.


This was the best mileage for any commercially produced truck.

Buy or lease now at

JACK LANE FORD, INC


104 Pine 283-2526

Have You Met This Man?



You should meet him, get to know him. He's the expert who has the answers to all your insurance problems—Auto, Life, Business, Home. He can save you money, too. A good man to know. Call him soon.

Auto-Life-Fire
Truck-Commercial
FAST-FAIR-FRIENDLY



Lewis Hudson
215 Kelly Blvd.
283-3724
Woodville, Texas

OBITUARY

Noah Platt

WOODVILLE—Funeral services for Mr. Noah Platt, 75, of Woodville, Texas, will be held Saturday, Feb. 26, at 11:00 a.m. at Woodville United Methodist Church with Rev. David A. Hutchins and Rev. Larry Trest officiating. Burial followed in the Siskiyaw Cemetery, Woodville.

Lucy McClain

SPURGER—Funeral services for Mrs. Lucy Donna Jordan McClain, 50, were held Sunday, Feb. 20, 1977, at 2:00 p.m. at First Baptist Church with Rev. Dennis Kirkland and Rev. Eric Williams officiating. Burial followed in the Turner Cemetery.

Nannette Foskey

WARREN—Funeral services for Mrs. Nannette Foskey, 65, of Warren, were held Tuesday, Feb. 22, 1977, at 2:00 p.m. at Edwards Funeral Home Chapel with Rev. Kenneth Cauten officiating. Burial followed in the Siskiyaw Cemetery.

Myrta Lodge To Be Honored By O.E.S.

Myrta Lodge of Warren will be honored with the Emerald dish supper given by the Eastern Star on Saturday, February 26th in celebration

Episcopal Church To Hold Lenten Series On Wednesdays

St. Paul's Episcopal Church will hold a Lenten series of four Wednesdays in March. The series will be held at 7:30 p.m. on March 2, 9, 16 and 23. The talks run by Rev. James H. Ballard.

Bureau Conducts Membership Drive

Farm Bureau in this county and across the state is now conducting a membership drive that seeks to give all farmers and ranchers an opportunity to join this large group of all general farm organizations.

Environmental Health Is DETDA Topic

W. T. Ballard, Regional Director of the Texas Department of Environmental Health, will be the principal speaker for the Deep East Texas Development Association.

Eagle Scout Sturrock Visits Governor

WOODVILLE—Eagle Scout Mark Sturrock recently visited Austin representing the Dogwood District Boy Scouts of America.

Contribution Marks Scout Fund Drive

(PHOTO ABOVE) shows kickoff in Woodville for the Three Rivers Annual Scout Fund Drive. The group is shown here attending a kick-off breakfast which was held Feb. 15 at the Woodville Inn.

Kirby Chapel Opens Soon

Kirby Memorial Chapel, 2 miles west of Chester, Texas at Peach Tree Village, will be opened on Saturday, March 4 through October.

Youth Raising Funds To Attend Convention

The Fellowship of Christian Activities announced the start of a campaign to raise funds for sending several young people to the national convention this summer.

Benefit Held Friday

The Ladies Aid of the Presbyterian Church in Woodville held a benefit on Friday, Feb. 24, at the Woodville Inn.

Evolution & Bees

In a beehive there are three distinct classes of bees: queens, drones and workers. Each of these classes is necessary to the life of the swarm, and each has its structure different from the others.

Evolution & Bees (cont.)

The interesting thing about this class is that in both insect and structure they are different from both the parents. You see, they are the offspring of queens and drones, and neither of these has either the instinct or the organization to make honey. It is absolutely necessary to the theory of evolution that the characteristics of the parents pass on to their offspring.

Evolution & Bees (cont.)

Atheistic evolution is trying very hard to make little out of our school children and they are doing it as readily as they think baby and unconcerned parents will let them. The breakdown of morality is an obvious result. Confide people that they are some else than animals and they will act as such.

Evolution & Bees (cont.)

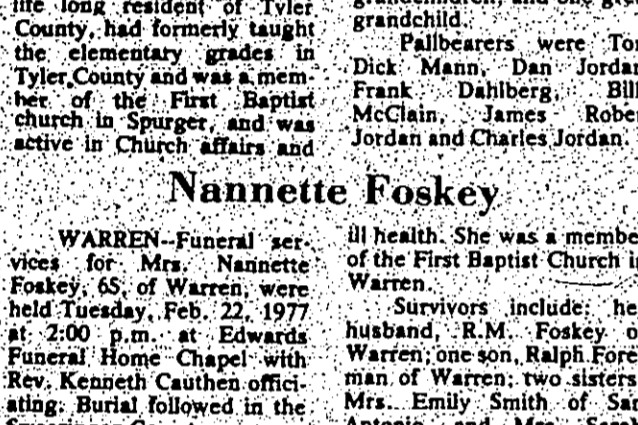
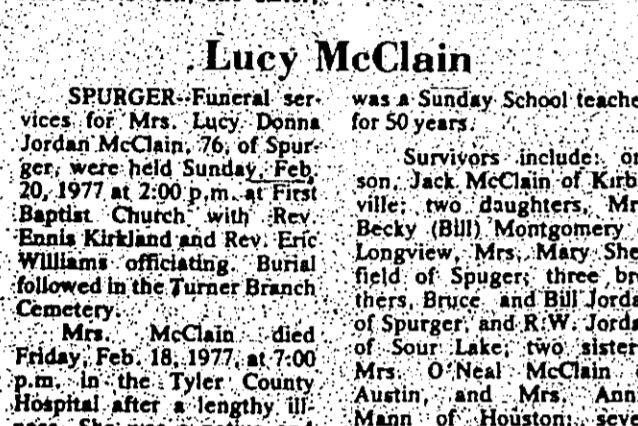
Awake thou sluggard! What a great need we have in the world today for men to awake "to righteousness and to life more." We cannot expect to bury our heads in the sand without paying the consequences. It is easy to "drink and dance" one's way to hell, but the devil also knows that every atheist will go to the same place.

Evolution & Bees (cont.)

Do you teach the word of God to your children? If not, why not? Taking them to "worship" or "Bible study" is not enough—the home must be kept as a major influence. The job is laid at the feet of fathers (Eph. 6:1-4). What about it men? Will we fulfill our job or be spiritual neo-don't-wells?

Evolution & Bees (cont.)

Scout your Bible! Study it every day. It is the only book that will give you the answers to all your questions. Study it in the presence of God. Let it be your guide and your light. Let it be your strength and your joy. Let it be your life.



FAIRVIEW BAPTIST CHURCH, Woodville, Billy Hutto, pastor. Sunday School 9:45 a.m.; Morning worship 10 a.m.; Church Training 6:30 p.m.; Thursday G.A.'s and Cantors 4:00 p.m.

BEECH CREEK BAPTIST, E.O. Holland, pastor. Sunday School 10 a.m.; Morning worship 11:00 a.m.; Evening worship 7:00 p.m.

FIRST BAPTIST CHURCH, Woodville, Corner of Wheat and Church; Ph. 283-2796. Dr. Raymond Ford, Pastor. Sunday School 9:40 a.m.; Morning worship 10:30 a.m.; Church Training 6:30 p.m.; High Choirs at 4:30. 4-year-6th grade Children's Choir Sunday at 6:30. Adult Choir, Wed. 8:15 p.m. Melody Makers Tues. 10 a.m. Prayer Meeting and Bible Study 7:15 on Wednesday.

COBB MILL ROAD BAPTIST CHURCH, Woodville, W.C. Haynes, Pastor. Sunday School 10 a.m.; Morning worship 11 a.m.; Training Union 6 p.m.; Evening worship 7 p.m.; Wednesday G.A. 9 p.m.; Prayer Meeting 7:30 p.m.

FIRST BAPTIST CHURCH, Warren, Kenneth Cauten, Pastor. Sunday School 9:45 a.m.; Morning worship 11 a.m.; Church training 6 p.m.; Evening worship 7 p.m.

NEW SHILOH BAPTIST CHURCH, West of Woodville, Mackdon, Pastor. Sunday School 9:45 a.m.; Morning worship 10:30 a.m.; Midweek Prayer Service Wednesday 7 p.m.; Baptist Meet every first Wednesday at 7:00 p.m.

ROCKLAND BAPTIST CHURCH, Rev. Ken Franklin, Pastor. J.B. Dean, Music Director. Sunday School 10:00 a.m.; Morning worship 11:00 a.m.; Evening worship 7:00 p.m.; Midweek Prayer Service Wednesday 7:00 p.m.; Baptist Meet every first Wednesday at 7:00 p.m.

PLEASANT VALLEY BAPTIST CHURCH, C.S. Reed, Pastor. Sunday School 9:45 a.m.; Morning worship 11:15 a.m.; 3rd and 5th Sun. Dinner on Grounds, 5th Sun. H. Cantor, music director.

FIRST SHILOH CHURCH, Services every 1st, 3rd and 5th Sunday in month. Bro. Ernest Martin, Pastor. Services begin at 10:45 a.m. promptly. Midweek prayer service Wednesday 7 p.m.; Everyone welcome.

NATT BAPTIST CHURCH, Colmesneil, Sunday School 10 a.m.; Morning worship 11 a.m.; Evening worship 7:30 p.m.; Charles Bonner, Pastor.

CALVARY BAPTIST CHURCH, Rev. Jimmy Dean, Pastor. Sunday School 9:45 a.m.; Morning worship 11 a.m.; Training Union 6 p.m.; Evening worship 7 p.m.; Wednesday Prayer Meeting 7 p.m.

FIRST BAPTIST CHURCH of Hillmar, Henry Shamus, pastor. Sunday School 9:45 a.m.; Morning worship 10:30 a.m.; Wednesday prayer meeting 7 p.m.

MT. CARMEL BAPTIST CHURCH, Jack Lovell, Pastor. Sunday School 9:45 a.m.; Morning worship 11 a.m.; Evening worship 7:00 p.m.; Wednesday Prayer Meeting 7:00 p.m.

EENEZER BAPTIST CHURCH, Sunday School 10 a.m.; Morning worship 11:00 a.m.; Evening worship 8:00 p.m.; Wednesday evening prayer meeting 7:00 p.m.; Pastor Lloyd Mahaffey.

NEW HOME BAPTIST CHURCH, 5 miles east of Warren, off F.M. 1943 in New Hope Community. Wayne Winkler, Pastor. Sunday School 9:45 a.m.; Morning worship 11 a.m.; Evening worship 8 p.m.; Wednesday Prayer Meeting 7 p.m.

ST. PAUL'S EPISCOPAL CHURCH, Hwy. 100 Dr. George Floyd, Vicar. Sunday services 9:30 a.m., 1st and 3rd Morning; Morning Prayer; 2nd and 4th Holy Communion. Further information call 283-2544.

SPURGER UNITED METHODIST CHURCH, Mrs. J. Williams, Sunday School 9:45 a.m.; Morning worship 11 a.m.; Evening worship 7:30 p.m.

WOODVILLE UNITED METHODIST CHURCH, David A. Hutchins, pastor. Sunday School 9:45 a.m.; Morning worship 10:30 a.m.; U.M.W.F. meeting 5:30 p.m.; Evening worship 7 p.m.

CHESTER MOUNT UNITED METHODIST CHURCH, Chester, Rev. Jesse Adams, pastor. Worship service 11 a.m.; Evening worship 8 p.m.; Church school 10 a.m.; Bible study 7 p.m.; (Each Wednesday) 10:00 a.m. (fourth Sunday).

WARREN UNITED METHODIST CHURCH, Rev. Charles H. Perkins, Minister. Sunday School 10:00 a.m.; Morning worship 11:00 a.m.

CHURCH OF JESUS CHRIST OF LATTER DAY SAINTS, Woodville, Presiding 9 a.m.; Sunday school 10:30 a.m.; Sacrament meet 5:30 p.m.; presented by Heath Lee Crosby.

PENTECOSTAL PENTECOSTAL HAMPTON HILL, 1708 West of Chester. James Troy Lewis, pastor. Services: Saturday 7:30 p.m.; and Sunday: Sunday School 10 a.m.; Morning worship 11 a.m.; and Evening worship 7:30 p.m.

WARREN UNITED PENTECOSTAL CHURCH, Sunday school 10 a.m.; Sunday School 10 a.m.; Morning worship 11 a.m.; Evening worship 7:30 p.m.; Youth Study 7:30 p.m.; Pastor Vern W. Thurston.

HILLIER ASSEMBLY OF GOD CHURCH, Rev. D. A. Hillier, pastor. Sunday School 10 a.m.; Morning worship 11 a.m.; Evening worship 7:30 p.m.; Young People's service 8 p.m.; Evening worship 8:30 p.m.; Thursday Bible Study 7 p.m.

SHADY GROVE ASSEMBLY OF GOD CHURCH, West of Woodville. Sister Leta Brown, Pastor. Sunday School 10 a.m.; Evening worship 8:30 p.m.; Wednesday service for youth 7 p.m.; Wednesday Bible Study 7:30 p.m.

ASSEMBLY OF GOD, 810, Timmy, Pastor. Sunday School 9:45 a.m.; Morning worship 11 a.m.; Evening worship 7 p.m.; Wednesday Bible Study 7:30 p.m.

SAC GROVE ASSEMBLY OF GOD CHURCH, Sunday School 9:45 a.m.; Morning worship 11 a.m.; CA's at 8:00 a.m.; Wednesday service for youth 7 p.m.; Wednesday Bible Study 7:30 p.m.; Local 4:00 p.m.; Wednesday 4:00 p.m.; Food & Supper 4:00-6:00 p.m.

TRINITY ASSEMBLY OF GOD CHURCH, 215 W. Holly, Rev. A.C. Caloway, Pastor. Sunday School 9:45 a.m.; Morning worship 11 a.m.; Evening worship 8:30 p.m.; CA's at 8:00 a.m.; Wednesday service for youth 7 p.m.; Wednesday Bible Study 7:30 p.m.; Local 4:00 p.m.; Wednesday 4:00 p.m.; Food & Supper 4:00-6:00 p.m.

CHESTER BAPTIST CHURCH, Chester, Pastor, Rev. Jesse Adams. Sunday School 9:45 a.m.; Morning worship 10:45 a.m.; Training Union 6 p.m.; and evening worship 8:45 p.m.; Church activity groups meet every Monday after school.

FIRST BAPTIST CHURCH OF COLMESNEIL, Sunday School 9 a.m.; Morning worship 10:30 a.m.; Evening worship 7 p.m.; Wednesday Training 5 p.m.; Evening worship 7 p.m.; Wednesday W.M.U. 8 p.m.; Prayer Meeting 7 p.m.; Pastor, Rev. Wm. E. HENK.

ENON BAPTIST CHURCH, 1 mile east of Chester on Hwy. 1745. Larry Trent, pastor. Sunday 9:45 a.m.; Morning worship 11 a.m.; Training Union 6 p.m.; and Bible Study 6 p.m.; Evening worship 7 p.m.; Everyone is welcome.

BETHEL BAPTIST CHURCH, Warren, John Spanakis, pastor. Sunday School 9:45 a.m.; Morning worship 11 a.m.; Youth Choir 5:15 p.m.; Training Union 6 p.m.; Evening worship 7 p.m.; Bible Study 8:15 p.m.; Wednesday W.M.U.A. 4 & 6 A's 8:30 p.m.

FIRST BAPTIST CHURCH of Spurger, Ernie Kirkland, Pastor. Sunday School 9:45 a.m.; Morning worship 11 a.m.; Evening worship 7 p.m.; Midweek worship on Wednesday 7:30 p.m.

FIRST BAPTIST CHURCH of Doan, Rev. Jack Miford, Sunday School 9:45 a.m.; Morning 11 a.m.; Training Union 8 p.m.; Evening worship 7 p.m.; Wednesday Prayer meeting 7 p.m.

HASMONY BAPTIST CHURCH, Billy Cole, Pastor. Sunday School 9 a.m.; Morning worship 11 a.m.; Evening worship 7 p.m.; Wednesday services 7 p.m.

CATHOLIC OUR LADY OF THE PINES CATHOLIC CHURCH, Rev. Dennis Peltz, Pastor. 1020 Pine St. Church Saturday Mass, 7:30 p.m.; Sunday Mass, 8:00 a.m.; Monday Communion 7:30 a.m.; Tuesday Mass 8:30 p.m.; Wednesday the Friday Mass 7:30 a.m.

CHRISTIAN CHURCH (Disciples of Christ), Clyde Bennett, Minister. 108 N. Charlton, Church School 9:45 a.m.; Church 10:45 a.m.; other meetings as announced.

CHURCH OF CHRIST WOODVILLE CHURCH OF CHRIST: Hwy. 100 west, Sunday Bible school 10 a.m.; Morning worship 11 a.m.; Evening worship 8 p.m.; Wednesday Study and worship 7 p.m.; Everyone is welcome.

WARREN CHURCH OF CHRIST, 1943 East of Woodville, Rev. Donald S. Miller, 542-9108. Sunday Bible class 9:45 a.m.; Morning Service 10:30 a.m.; Evening Service 8:00 p.m.; Bible Class, 7:30 p.m.; Rev. Donald S. Miller, 542-9108.

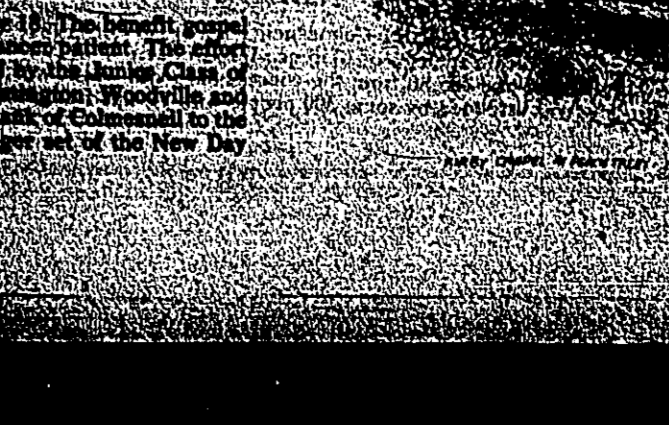
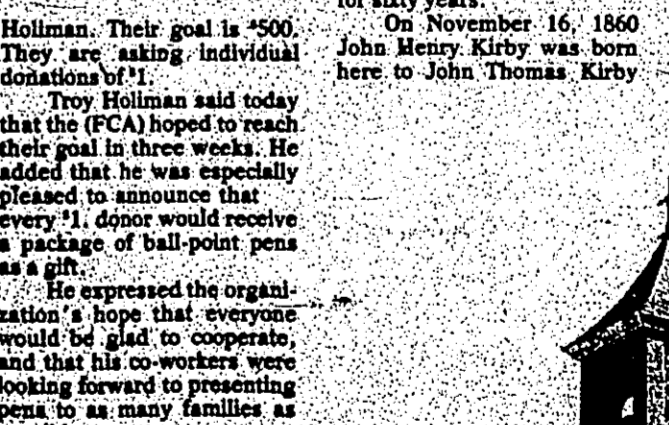
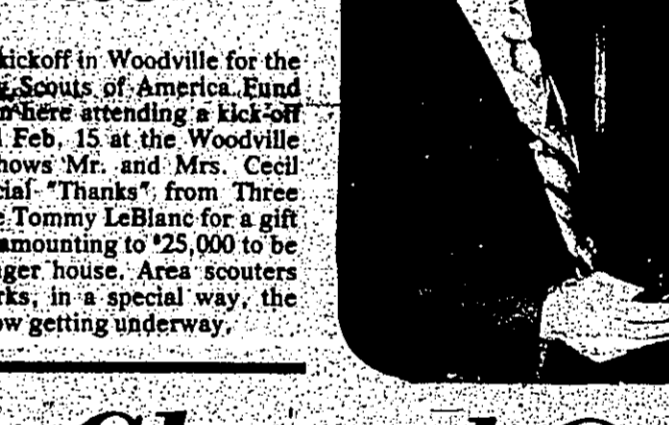
APOSTOLIC TAVERN/SILE, A United Pentecostal Church, Rev. Nathan E. Dupree, pastor. Sunday school 10 a.m.; Evening services 7:30 p.m.; Wednesday Prayer Meeting, 7:30 p.m.

LUTHERAN ST. PAUL'S LUTHERAN CHURCH, Serving Tyler, Jasper and Sabine Counties. Meets at First Presbyterian Church building, 140 West Ninth Street, each Sunday. Church begins 10:15 a.m.; Sunday School 11:15 a.m.; Rev. Arnold Wenger, pastor.

NON-DENOMINATIONAL ROCKLAND REVIVAL CENTER, Rockland, Texas. Rev. Kinobad L. Cowart, Pastor. Services Thursday night 7:30 p.m.; Sunday morning worship 10:30 a.m.

EPISCOPAL ST. PAUL'S EPISCOPAL CHURCH, Hwy. 100 Dr. George Floyd, Vicar. Sunday services 9:30 a.m., 1st and 3rd Morning; Morning Prayer; 2nd and 4th Holy Communion. Further information call 283-2544.

METHODIST SPURGER UNITED METHODIST CHURCH, Mrs. J. Williams, Sunday School 9:45 a.m.; Morning worship 11 a.m.; Evening worship 7:30 p.m.



Blue & Gold Banquet Set
The Blue and Gold Banquet will be Thursday, Feb. 24 at 7 p.m. in the Dining Hall at Camp Urdan.

Benefit Held Friday
The Ladies Aid of the Presbyterian Church in Woodville held a benefit on Friday, Feb. 24, at the Woodville Inn.

Contribution Marks Scout Fund Drive
(PHOTO ABOVE) shows kickoff in Woodville for the Three Rivers Annual Scout Fund Drive. The group is shown here attending a kick-off breakfast which was held Feb. 15 at the Woodville Inn.

Kirby Chapel Opens Soon
Kirby Memorial Chapel, 2 miles west of Chester, Texas at Peach Tree Village, will be opened on Saturday, March 4 through October.

Youth Raising Funds To Attend Convention
The Fellowship of Christian Activities announced the start of a campaign to raise funds for sending several young people to the national convention this summer.

Benefit Held Friday
The Ladies Aid of the Presbyterian Church in Woodville held a benefit on Friday, Feb. 24, at the Woodville Inn.

Evolution & Bees
In a beehive there are three distinct classes of bees: queens, drones and workers. Each of these classes is necessary to the life of the swarm, and each has its structure different from the others.

Evolution & Bees
The interesting thing about this class is that in both insect and structure they are different from both the parents. You see, they are the offspring of queens and drones, and neither of these has either the instinct or the organization to make honey.

Evolution & Bees
Atheistic evolution is trying very hard to make little out of our school children and they are doing it as readily as they think baby and unconcerned parents will let them.

Evolution & Bees
Awake thou sluggard! What a great need we have in the world today for men to awake "to righteousness and to life more."

The Tyler County Membership Committee met at the Farm Bureau office in Tyler, Texas, on Feb. 21 to begin preparation for the membership drive which will start on March 5. The committee members are: Don Barker, Don Stanford, Don Barker, Grady Miller and Evelyn Johnston.



"Buy or Sell" Yellow Ribbon Antiques
117 Nellius St. Woodville, Texas

SPEED QUEEN

Built better to last longer.

\$50.00 REBATE

CUSTOMER NAME: _____
ADDRESS: _____
CITY: _____ STATE: _____
CUSTOMER SIGNATURE: _____
SERIAL NUMBER: _____ DATE PURCHASED: _____
DEALER'S NAME: _____

(MR. DEALER, PLEASE CHECK ONE)
 \$25.00 REBATE FOR SPEED QUEEN WASHER
 \$25.00 REBATE FOR SPEED QUEEN DRYER
 \$50.00 REBATE FOR SPEED QUEEN WASHER & DRYER

Rebates On All Speedqueen Models

| | |
|----------------------|---------------------------------|
| Washer Reg. \$309.25 | You get \$50.00 Rebate |
| Dryer Reg. \$209.25 | plus \$10.00 Dealer Discount |
| Total Reg. \$538.50 | SALE PRICE ONLY \$478.50 |

The Furniture Center
107 E. Bluff 283-2805

Save Where Your Money Really Adds Up..

New Hours and Even Better Savings at Southeast Texas Savings & Loan

5.25% Regular Passbook Account equals

5.39% Annually compounded Daily

Interest Paid from Date of Deposit to Date of Withdrawal

New Hours at S.E.T.S.&L.
Monday thru Thursday 9 a.m. to 3:30 p.m.
Friday 9 a.m. to 5:30 p.m. Closed on Saturday

7 1/2% 4-YEAR SAVINGS CERTIFICATE (\$5,000. MIN.)
Compounded Daily

6 3/4% 30-MONTH SAVINGS CERTIFICATE (\$5,000. MIN.)
Compounded Daily

6 1/2% 12-MONTH SAVINGS CERTIFICATE (\$1,000. MIN.)
Compounded Daily

5 1/2% 6-MONTH SAVINGS CERTIFICATE (\$1,000. MIN.)
Compounded Daily

On Certificates withdrawn prior to maturity, Federal regulations require interest to be paid at the regular savings rate less 90 days interest.

SOUTHEAST TEXAS SAVINGS and Loan Association
P.O. Box 936 Woodville, Texas 75979

Member of: Federal Savings & Loan Insurance Corporation, Federal Home Loan Bank System, United States Savings & Loan League, Texas Savings & Loan League. Supervised by: Texas State Banking Department, Federal Home Loan Bank Board.

Local Farm Bureau Plans Membership Drive

Tyler County Farm Bureau Membership Chairman Grady Miller, Jr. announced the plans for the coming membership campaign beginning Feb. 21 and ending Saturday, March 5. With a "BRING YOUR NEW MEMBER BREAKFAST" from 7:00 to 9:00 a.m. at the Farm Bureau office in Woodville, 1404 W. Bluff or just past the Dairy Queen Committee members Doyle Benne, Stanford, Evelyn Johnston, Luther Moyer, Don Barker will be serving Pan-cakes and sausage with coffee or hot chocolate. They will be assisted by the Board of Directors and Agent Larry Trest-Agency Manager David Horn and Secretary Ruth Stanford.

Each Farm Bureau member is asked to sign up a new member and bring them to the breakfast. There will be a membership application in the Tyler County Farm Bureau Newsletter that members are asked to use in signing up their member. There will be a "Save" mark given away 10:00 a.m. on Sat. March 5. Come and get your name in the members' book. Donations by the Trest Agency and Agent Larry Trest. Polk-San Jacinto-Tyler Counties, David-Horn is offering a dinner for two at the place of your choice for the members (at least 3). The winner will be announced at the time the tire is given away.

Texas Farm Bureau Legislative Objectives

Texas Farm Bureau is geared up for maximum effort to implement its policies in the 76th Texas Legislature. The TFB Board of Directors selected key legislative priorities in legislative activities. Areas covered include environmental programs, labor, state and local government, highways and transportation, and agricultural research. TFB policies on taxes include favoring a constitutional provision providing for assessment of agricultural land for tax purposes on its productive value, leaving to the Legislature the responsibility and authority for enacting implementing statutes.

Burton on Bureau Board of Directors

Henry Burton of Lufkin was elected to the Texas Farm Bureau Board of Directors in Nov. of 1971, representing District 9, which includes Tyler County. Burton was a board member of the Angelina County Farm Bureau for 17 years, and also served three terms as president. He presently serves on TFB's livestock, and Research and Education Committees. Burton is married to the former Christine DuBose and they have two sons, who along with him operate a poultry farm of approximately 250,000 laying hens. His poultry operation includes farms, feed mill, processing plant and marketing facilities. Texas Farm Bureau Board members are nominated by delegates in their home districts and elected by the entire delegate body at State Bureau annual meetings.

Burton Chaloupka Is State Bureau President

Carol Chaloupka, president of the Texas Farm Bureau is a livestock and grain producer from Dalhart, who was elected in December 1974. He has been active in Farm Bureau for several years and served for three years as president of the Hartley County Farm Bureau. In 1969 he was elected TFB state Director, District 1. He was chosen as secretary-treasurer of the TFB the following year and in 1972 was elected vice president. He and his wife the former Dorothy Peters of New Sumner, Iowa have a son and daughter. They are members of the Methodist church. He also is a Scottish Rite Mason and Shriner.

Tom's Meat Market

Hwy. 92 - South Spurger

Super Meat Deal - Deluxe Meat Deal

| | |
|-------------------------------|---------------------|
| 5 lbs. Tenderloin | 5 lbs. Round Steak |
| 5 lbs. Tri-Tip | 5 lbs. Brisket |
| 5 lbs. Sirloin Steak | 5 lbs. Pork Chop |
| 5 lbs. Pork Chop (Center Cut) | 5 lbs. Ham |
| 5 lbs. Ground Chuck | 5 lbs. Pork Sausage |
| ALL CHOICE CUTS | ALL CHOICE CUTS |
| 25 lbs. - \$33.95 | 25 lbs. - \$27.95 |

1/2 Calf cut and wrapped 79¢ lb. 200 lb. avg.

Tom's Meat Market will be Closed on Mondays starting March 7th

Economy Meat Pkg.
5 lbs. Gravy Steak
5 lbs. Brisket Steak
5 lbs. Hot Link
5 lbs. Pops
5 lbs. Ground Meat
25 lbs. - \$15.95

Special Meat Pkg.
5 lbs. Steak
5 lbs. Round Steak
5 lbs. Sirloin Steak
5 lbs. Pork Chop
5 lbs. Ham
5 lbs. Pork Sausage
5 lbs. Ground Meat
ALL CHOICE CUTS
25 lbs. - \$19.95

FOOD STAMPS WELCOME
8 a.m. - 6 p.m. 429-3690

"If we make an error on your taxes, we pay the penalty. And the interest."

Reason No. 14 why H&R Block should do your taxes.

H&R Block doesn't make many mistakes. Our people are trained not to. But if we should make an error that costs you additional tax, you pay only the additional tax. Block pays any penalty and interest. We stand behind our work.

H&R BLOCK
THE INCOME TAX PEOPLE
430 S. Magnolia Woodville, Texas 283-3472
weekdays 8-6 Saturday 8-12 noon
NO APPOINTMENT NECESSARY

BUILDING MATERIALS DISCOUNTS

Interior - Exterior
Fixall - Fixtone Paint
as low as \$5.95 a gal. \$3.29 a gal.

Rockwell Faucets

| | | |
|---|---------|---------|
| 071-29 Single Control Kitchen Faucet | \$23.99 | \$21.66 |
| 206-729 Twin Handle Kitchen Faucet | \$23.99 | \$17.95 |
| 206-119 Twin Handle Lavatory Faucet | \$17.99 | \$13.50 |
| 206-14 Lavatory Center Set | \$11.54 | \$8.95 |
| 040-89 Single Control Lavatory Faucet | \$34.99 | \$26.50 |
| 071-30 Single Control Kitchen Faucet w/ spray | \$26.99 | \$27.95 |

Fence Posts
6 1/2" x 2" top \$1.79 each
8" x 3" top \$1.72 each
8" x 5" top \$3.85 each

Barbed Wire
American Made - 4 point Reg. \$22.50 SALE \$19.95
10' x 1/2" Ground Round Reg. 18¢ a foot SALE 15¢ a foot

Abitibi Paneling
Hardboard Panels - Decorative Panels - Finished Panels - Plywood Panels - Decorative Chair Panels - Also a full line of Moldings

Electric Wire
12' x 2" Ground Round Reg. 12¢ a foot SALE 10¢ a foot
10' x 1/2" Ground Round Reg. 18¢ a foot SALE 15¢ a foot

Freeman Concrete & Hardware
Colmanell 837-5278

The Need for Organization

Agriculture, more than any other sector of the economy is subject to the vagaries of both weather and the marketplace.

Farmers risk entire crops on weather conditions. When the harvest comes they compete vigorously with each other to sell their products. If the weather is favorable and they have misjudged demand, the resulting overproduction forces down prices. When a cowman plans a calf crop, he has no idea what the market will be when the animals are ready to sell. Yet, production costs continue to rise. The farmer and rancher cannot automatically pass along costs increases to the consumer.

Agriculture is the only large sector of the economy that can sell on the world market. Although the farmer is dependent upon world markets for a substantial part of his production, even the right to this market is not guaranteed. If food prices rise in this country, there is always the threat of an export embargo.

In this setting, the farmer has learned to be super efficient, aided by the technology of agribusiness and the research and education arms of our land-grant colleges. The farmer of today produces 50 percent more on fewer acres than did his father. He feeds 56 persons today, compared to 16 just 20 years ago. Benefits from this increased efficiency have gone mostly to the consumer.

There are many factors, such as weather conditions, that are beyond farmers' control. But, by being organized and acting with a united voice, farmers can influence many factors that affect their net incomes and the freedom to manage their own farms.

The Farm Bureau in this county is now in the midst of a membership drive that seeks to build the kind of organization that will give farmers and ranchers a voice in their own destiny. We wish them every success.

-LIVING COLOR- FREE COLOR CHARM with PORTRAIT PACKAGE SPECIAL

2-8x10 2-5x7 10-Wallets

\$2.95 (TWO POSTS ALL AGES NO LIMIT NO EXTRA CHARGE FOR GROUPS)

\$9.00 (WHEN PHOTOGRAPHED PACKAGE ORDERS ONLY)

WHITES AUTO

Saturday, February 26
10 a.m. till 6 p.m.
304 S. Magnolia

R's Digger in the Dirt Time! SPECIAL SALE

Long Handle Round Point Shovel
4 Inch Meadow Hoe
Long Handle Square Point Shovel
Four True Long Handle Cultivator

Quality Tools from True Temper

YOUR CHOICE \$2.99

Freeman Concrete & Hardware
Colmanell 837-5278

Farm Bureau Provides Property Protection Program

Farm Bureau has a Property Protection Program that is designed to protect members' property from criminal acts. This posting and reward program is provided as part of membership dues. All a member has to do is obtain Farm Bureau's "No Trespass" signs from the county Farm Bureau office and place them at each piece of property. Decals are furnished for vehicles. A person who furnishes information leading to the arrest and final conviction of a person or persons committing unlawful acts (trespassing, arson, malicious mischief) is paid a \$200 reward by the Texas Farm Bureau. The protection program was adopted by voting delegates at a special 1971 convention as a part of TFB's expanded program. It is optional with counties. Rewards totaling \$17,200 had been paid through 1976. There are now 195 counties in the program.

AGRICULTURE THE BASIC INDUSTRY 1776-1976

TEAMWORK It takes more than optimism!

The farmer/rancher is an eternal optimist. He must be content with such imponderables as weather, prices and costs. Yet, it takes more than optimism in today's high cost agriculture. It takes an organization the farmer/rancher knows he can count on. Farm Bureau is such an organization. That's why four out of five farmers in the nation are members of Farm Bureau.

Farm Bureau works for agriculture on three broad fronts—

1. TO INCREASE ECONOMIC OPPORTUNITY—Through effectiveness in Public Affairs (policy development & legislative activities)
2. TO STRENGTHEN FARMERS' COMPETITIVE POSITION IN MARKETPLACE—Through marketing programs, commodity activities, market expansion
3. TO CONTROL PRODUCTION COSTS—Through group purchasing (tires & batteries), insurance protection (fire, life & casualty), group insurance (medical care)

JOIN THE FARM BUREAU TODAY!

CLIP AND SEND THIS COUPON TO: Box 611 Woodville, Tex. 75979 or call 283-2424

TEXAS FARM BUREAU
ANNUAL DUES OF \$____ (COUNTY, TFB, AFBF)

NAME: _____
ADDRESS: _____
CITY: _____ STATE: _____ ZIP: _____
YEAR OF BIRTH: _____
SOCIAL SECURITY NO.: _____
 Renewal New Member
COMMODITY INTEREST IN ORDER OF IMPORTANCE:

SOLUTION: _____ DATE: _____

This message is sponsored by the following merchants:

| | | |
|--|--|--|
| Jimmy's Auto Parts & Hardware Colmanell 837-5102 | Larry Trest Farm Bureau Agent | Bennie Stanford 283-5308 Chestnut Hwy Dirt Moving Specialist |
| JOBE Equipment 501 S. Magnolia 283-2541 | Exxon Co. U.S.A. Mox Graham's Agent Farm Products | Woodville Feed & Supply 209 E. Bluff 283-5224 feed • seed |

AGRICULTURE THE BASIC INDUSTRY 1776-1976

Build East Texas Annual Meeting Set For March 2

The Build East Texas annual meeting, scheduled for March 2 at Stephen F. Austin State University, Nacogdoches, offers something for almost everyone interested in East Texas agriculture, according to L.M. Vaughan, BET coordinator and Extension district agent.

The morning program, beginning with registration at 9:30, features five special interest sessions. Each person will be able to attend three of the five sessions.

"Ups and Downs in Cattle Prices: What Does the Future Hold?" is the topic of Dr. Ernest Davis, livestock marketing specialist for the Texas Agricultural Extension Service. This is a continuing question with beef cattle producers in East Texas and Davis will attempt some crystal ball-gazing into what the future holds.

Dr. Jack Price, project leader in pesticide chemicals for the Texas Agricultural Extension Service, will answer the question, "Can You Use Pesticides in 1977?" New laws call for licensing of private applicators of certain restricted pesticides. Price will explain the procedure for qualifying for the license and answer pertinent questions concerning applying pesticides safely.

The topic, "Improve the Family Budget-Grow Your Own Groceries", should be of interest to home gardeners, homemakers and others with the job of maintaining the family food budget. Sam Cotner, horticulturist, Texas Agricultural Extension Service, will present this portion of the program. Cotner will make each of the three presentations somewhat different for those who attend only these sessions.

Many producers in East Texas are interested in producing grain as a cash crop and to supplement livestock enterprises. The subject "Corn, Grain Sorghum and Soybeans-Will They Work in East Texas?", should answer many of the questions concerning these crops. Dr. John E. Bremer, Extension agronomist, and Dr. Ken Smith, Extension area agronomist, will conduct this session.

For those in East Texas with a desire to produce fruits and vegetables for the commercial market, two Extension specialists will be on hand to talk about "Profit Potential in Commercial Fruit and Vegetable Production". Dr. George McEachern, Extension horticulturist, will discuss fruits and Thomas Longbrake, Extension horticulturist-vegetables, will discuss vegetable production.

During the afternoon session, Elmer R. Oates, BET chairman, Woodville, will lead the business session for the election of officers and the chairman's report. Dr. H.O. Kunkel, dean, College of Agriculture, Texas A&M University, will bring greetings from the state's land grant university.

Keynote speaker, Dr. Phil Gramm, professor in Texas A&M's Department of Economics, has the challenging topic of "Agriculture in an Inflationary Economy". Dr. Gramm is well known for his expertise on problems critical to the economy of the state and nation.

A \$5.00 registration fee includes the noon meal. All persons in East Texas and surrounding areas are invited to attend the entire meeting. There will be allowed for questions during each special interest session.

Navy Promotes R. Lopez

Navy Reserve's Master Chief Petty Officer R. Lopez, USN, was promoted to the rank of Master Chief Petty Officer, USN, on Feb. 24, 1977. Lopez is assigned to the USS Zumwalt (DDG-105) at Naval Station, Norfolk, Virginia. He has 20 years of service in the Navy. Lopez is a member of the American Legion, Post 1234, Norfolk, Virginia.

DOUBLE S & H GREEN STAMPS TUESDAY
WITH \$2.00 PURCHASE OR MORE (EXCLUDING CIGARETTES)

FOR YOUR SHOPPING CONVENIENCE **BROOKSHIRE BROS.** IS OPEN 7:30 a.m. til 8 p.m. **MON. - SAT.**

STRETCH YOUR DOLLARS

KRAFT CREAMY MAYONNAISE
QUART JAR W/7" PUR. LIMIT ONE **89¢**

FROZEN FOOD
Minute Maid 100% ORANGE JUICE
6 OZ. CANS **29¢**

LIBBY GOLDEN CREAM OR W.K. **CORN**
3 300 CANS \$1.00

LIBBY SWEET **PEAS**
3 300 CANS \$1.00

BIRDSEYE LITTLE EAR **CORN ON COB** 8 EAR PKG. **99¢**
BANQUET **FRIED CHICKEN** 2 LB. SIZE **\$2.39**
TROPHY-SLICED **STRAWBERRIES** 10 OZ. PKG. **39¢**
HY-TOP FROZEN **WAFFLES** 5 PKG. **\$1.00**

PARK TUNA BREAST-O-CHICKEN
SPAM LUNCH MEAT
JUICE QUART JAR **69¢**
SPEARS 8 OZ. JAR **89¢**

LIBBY VIENNA **SAUSAGE**
3 4 OZ. CANS \$1.00

LIBBY POTTED **MEAT**
5 3 OZ. CANS \$1.00

FROM OUR DAIRY
BORDENS HI-PRO **MILK** 1/2 GALLON **79¢**
BORDENS **COTTAGE CHEESE** 12 OZ. CARTON **49¢**
HY-TOP SWISS STYLE ASSORTED **YOGURT** 4 8 OZ. CARTON **\$1.00**

HY-TOP ALL VEGITABLE **SHORTENING**
3 LB. CAN W/7" PUR. **89¢**
LIMIT ONE

EXTRA FANCY WASHINGTON **APPLES**
GOLDEN DELICIOUS
1 LB. **29¢**

MEAT DEPT.

WILSON "BIG EYE" SLICED **PORK LOIN** LB. QUARTER **98¢**

FRANKS WILSON'S CERTIFIED **FRANKS**
12 OZ. PKG. **49¢**

WILSON "BIG EYE" CENTER CUT LOIN **PORK CHOPS** LB. **\$1.69**
WILSON "BIG EYE" BREAKFAST CUT **PORK CHOPS** LB. **\$1.79**
WILSON "BIG EYE" CENTER CUT RIB **PORK CHOPS** LB. **\$1.59**
ARMOUR **BOLOGNA** 12 OZ. **89¢**

ARMOUR **HOT DOGS** 12 OZ. PKG. **69¢**
ARMOUR CHUBS **MUENCHNER** LB. **\$1.59**
ARMOUR (FOR BEER) CHUBS **SALAMI** LB. **\$1.59**
RATH ROLL **SAUSAGE** 2 LB. **\$1.49**

100 FREE STAMPS WITH PURCHASE OF 3 LBS. OR MORE **GROUND BEEF**

100 FREE STAMPS WITH PURCHASE OF ANY FAMILY PACK **BABY BEEF**

100 FREE STAMPS WITH PURCHASE OF ANY 3 LBS. OR MORE **PORK LOIN ROAST**

USDA CHOICE CERTIFIED TENDER **DUTCH OVEN STEAK** LB. **\$1.49**
USDA CHOICE CERTIFIED TENDER **CHARKETTE STEAKS** LB. **\$1.49**
USDA CHOICE CERTIFIED TENDER **BONELESS SHOULDER ROAST** LB. **\$1.18**

USDA CHOICE CERTIFIED BONELESS **STEW BEEF** LB. **\$1.28**
BROOKSHIRE BROS. **LUNCH MEATS** LB. **99¢**
RATH SMOKED **PORK CHOPS** LB. **\$1.79**

RATH ASSORTED **LUNCH MEAT** 8 OZ. PKG. **53¢**
OSCAR MAYER **COOKED HAM** 8 OZ. PKG. **\$1.39**
OSCAR MAYER VARIETY PACK **LUNCH MEAT** 12 OZ. PKG. **\$1.79**

USDA CHOICE CERTIFIED TENDER BONELESS **CHUCK ROAST** LB. **98¢**

hillshire Farm **SAUSAGE** **\$1.39**
AMOUR SLICED **BACON** LB. **\$1.39**
DECKER JUMBO ALL MEAT **BOLOGNA** LB. **79¢**
DECKER SALT PORK **CHUNKS** LB. **98¢**
RATH BONELESS HICKORY SMOKED **HAM** LB. **\$2.19**
OSCAR MAYER REG. BEEF, OR GARLIC **BOLOGNA** 4 OZ. **79¢**
CARLYON PIMENTO **CHEESE** 7 1/2 OZ. **79¢**
CARLYON COUNTRY BOX **LINKS** 1/4 LB. **\$1.19**

KRAFT SPAGHETTI WITH MEAT **DINNI** PKG. **89¢**
BISCO CHOCOLATE **PINWHEELS** 1/2 DOZ. **79¢**
EXTRA FANCY WASHINGTON **BACON-N-D** 1/2 DOZ. **89¢**
EXTRA FANCY WASHINGTON **COCKTAIL** 1/2 DOZ. **89¢**

100% Polyester 60" Fashion Length And I **DOUBLE** **Play-Doh** Pu **89¢**

Enter the **KRAFT** "HOW DOES AMERICA SPELL CHEESE?" **BROOKSHIRE BROS.** Sweepstakes. You could win \$15,000 to use in your kitchen (or any way you wish) or ONE OF 1,725 other prizes from Kraft. Rules and entry forms are available at all participating stores.

Play-Doh THE BEST FOR LESS

JACKPOT NOW \$1,200.00

PRICES FOR FEB. 25 - MAR. 1, 77

BIG STAR

Be sure to have your card punched!!

Last Week Alleen Harris of Woodville won \$25

WE RESERVE THE RIGHT TO LIMIT QUANTITY PURCHASES

WEEK 6 OF

Play THE QUALITY GAME

BABY BEEF SALE

7-BONE CHUCK STEAK LB. **79¢**

BONELESS STEW MEAT LB. **\$1.19**

RIB STEAKS LB. **99¢**

SAVE

USDA MEAT SLC MEAT ON BEEF

BOLOGNA **69¢**

HEMIFF VAC-PACK SLICED BACON 12 oz. **99¢**

DECKER JUMBO BUNNERS FRANKS LB. **89¢**

RED SKIPPED FILLETS LB. **1.39**

HYDE PARK SLL CHEESE 12 oz. **99¢**

ANMOOR SPY CUT HAMS LB. **\$1.79**

FRESH PORK NECK-BONES OR TAILS LB. **39¢**

CHUCK OR CROWN ROAST

LB. **59¢**

VELVEETA 2 lb Kraft **\$1.79**

vegetable margarine

HYDE PARK

WITH \$7.50 PURCH.

1 lb. ctns. **4/99¢**

HYDE PARK DRIED PINTO BEANS

1 lb. plgs. **4/99¢**

| | |
|---|--|
| STILLWELL PIE SHELLS 12 oz. 39¢ | SWISS VIERNA SAUSAGE 3/99¢ |
| EVER FRESH DOUGHNUTS 12 oz. 79¢ | HERSHEY COB. SYRUP 49¢ |
| TOTINO PIZZAS 14 oz. 79¢ | JONSSON DAYTIME DIAPERS 2.29 |
| MIRACLE MARGARINE 49¢ | POTATO CHIPS 69¢ |
| KRAFT ASSTD B-B-Q SAUCE 16 oz. 59¢ | MRS. BUMBY'S BAR SOAP 27¢ |
| KRAFT MIRACLE WHIP 16 oz. 69¢ | DELTA JUM. ROLL TOWELS 49¢ |
| KRAFT TARRY ITAL. DINNER 16 oz. 39¢ | BETTY CROCKER BL-BERRY MUFFIN MIX 59¢ |
| KRAFT ITAL. (W/MEAT SAUCE) SPAG. DINNER 16 oz. 79¢ | JONSSON DAYTIME DIAPERS 2.29 |

BUSH PORK & BEANS

16 oz. **4/99¢**

HYDE PARK TUNA

6 1/2 oz. **49¢**

HYDE PARK SWT. PEAS

16 oz. **4/99¢**

HYDE PARK BISCUITS

8 oz. **9/99¢**

10 buttermilk biscuits

96 oz bh **\$2.59**

| | | |
|---|---|---|
| HYDE PARK PICKLES 16 oz. 59¢ | HYDE PARK C.S. W.K. CORN 303 4/99¢ | HYDE PARK FANCY PEELED TOMATOES 16 oz. 3/99¢ |
| HYDE PARK TOM. JUICE 48 oz. 53¢ | HYDE PARK CHILI HOT BEANS 16 oz. 4/99¢ | HYDE PARK YELLOW POPCORN 16 oz. 2/49¢ |
| HYDE PARK FRUIT COCKTAIL 303 3/99¢ | HYDE PARK CUT GR. BEANS 16 oz. 4/99¢ | HYDE PARK SALT 16 oz. 16¢ |
| HYDE PARK PEACHES 1 1/2 doz. 59¢ | HYDE PARK S.S. POTATOES 2 1/2 doz. 6/99¢ | HYDE PARK NAPKINS 160 ct. 2/89¢ |

50 oz box **\$1.49**

22 oz bh. **89¢**

COUPONS

BIG STAR IMPERIAL SOFT MARGARINE LB. **49¢**

BIG STAR POST SUGAR CRISPS 16 oz. **79¢**

BIG STAR DETERGENT LIQUID WISK 64 oz. **\$1.99**

SAVER BOOK SPECIALS

Hyde Park Sugar 5 Lb. **59¢** w/Thirty Saver

Maxwell House Coffee 1 Lb. **\$2.09** Book

Light Crust Flour 5 Lb. **10¢** Book

U.S. NO. 1 RUSSET POTATOES

5 lb. bag **59¢**

| |
|---|
| LAUREL BRAND DRESSING 48 oz. 3/99¢ |
| MEDIUM YELLOW ONIONS 16 lb. 29¢ |
| TEXAS SWEET ORANGES 5 lb. bag 69¢ |
| WASHINGTON RED DEL. APPLES 3 lb. 99¢ |
| CALIFORNIA AVOCADOS 4 ct. 99¢ |

26 lb box **\$6.99**

CONC. ALL

DRUG SAVINGS

GILLETTE REG. RIGHT GUARD 4 oz. **88¢**

100 FREE STAMPS WITH PURCH. EC. ITEM REG. SW

100 ct. TYLENOL TABLETS

4 oz shampoo HEAD & SHOULDERS

7 oz Colgate TOOTH PASTE



THE TYLER COUNTY HERALD



THE EAST TEXAS REVIEW

VOLUME 2 NUMBER 8

1008 WEST BLUFF STREET

WOODVILLE, TEXAS 75779

THURSDAY, FEBRUARY 24, 1977

TELEPHONE 263-6332

\$5.00 PER YEAR

EX-CON HELD IN FIVE IVANHOE BURGLARIES



Town Talk by BARBARA
Glad to report that at the COMMISSIONERS COURT meeting Tuesday morning, all the commissioners seemed to have recovered their voices.



PART OF RECOVERED LOOT

Most of the loot stolen from five houses in Ivanhoe is pictured above. Other items taken included a Honda motorcycle and a revolver.

Bill Weeks Nabs Suspect With Citizens Arrest

ANDY DEVINE DIES

NEWPORT BEACH, Calif. — Actors whom Andy Devine served as a television and movie "sidekick" said Saturday that he should be remembered for the laughter he brought the nation.

The rural community of Ivanhoe, a private subdivision, was the scene this week of a very unusual incident. Five homes were burglarized by a lone intruder within the 48 hour period before apprehension.

Donald Rushing, 23, was picked up by Sheriff's deputies after he was surprised by Bill Weeks of Ivanhoe inside one of the homes he had burglarized.

Rushing was taking life easy in the home with his loot all around. He had served time before for the same offense. His residence was given as Woodville but he resided formerly at Hillister and Ivanhoe.

Value was placed on the stolen goods at approximately \$1500. In addition to fishing gear, a camera and other miscellaneous household possessions, a Honda motorcycle and a .32 caliber Smith & Wesson revolver were taken.

Rushing had stolen a car in Oklahoma in which he made the trip to Ivanhoe. It also was recovered. He was taken to the Tyler County jail but was later released to FBI officers who had previous claims on him.

Mr. Weeks is to be congratulated on his citizens arrest. They are rare and needed with the upsurge in rural crime.

BOYKIN ANNOUNCES FOR WISD BOARD

Lumber Dealer Is Seeking Place 7



E. L. (GENE) BOYKIN

Mr. E. L. (Gene) Boykin, local lumber dealer, announces his candidacy for Position 7, not Position 6 as erroneously reported in the Tyler County Booster, on the WISD Board in the election set for April 1, 1977.

"I have lived in the Woodville School District 27 years. My wife Melba and I have three children, all graduates of Kirby High.

Other candidates who had announced by press time are: Harold (Bud) Allison, Jr. seeking re-election to Place 7 and Grady Holderman for Place 6.

Adams credit measure hit

AUSTIN — Sen. Bill Patman of Ganado says a new consumer credit bill "should fulfill the dreams of every loan shark in Texas."

Sen. Don Adams of Jasper and others introduced the bill (SB 615) last week and said it needed to protect borrowers against ripoffs and to keep loan companies profitable.

It contains a "modulator" feature designed to adjust rates up or down depending on the cost of doing business. It would raise the ceiling on loans regulated under Chapter 3 of the consumer credit code from \$2,500 to \$5,000.

Patman claimed the bill would give loan company lobbyists what they have been asking for and provide mechanism for raising rates every year.

"The high rates for loans over \$300 — and that's most of them — will go into effect no matter what the modulator does," said Patman Monday.

BILLS & WAMP LEGISLATURE

AUSTIN — The Texas Legislature, already more than 2,000 bills and resolutions into its 65th session, still faces a crunch of more proposed legislation.

March 11th is the deadline for "free" introduction of bills — the constitutional provision that tells lawmakers it's time to settle down from proposing to deciding.

After the first 60 days of the January through May session only local bills, emergency appropriations, and legislation tagged an emergency

Courthouse Squares



ACTION IS THE ENERGY THAT BUILDS CHARACTER.

JASPER FEDERAL SAVINGS TO OPEN WOODVILLE BRANCH

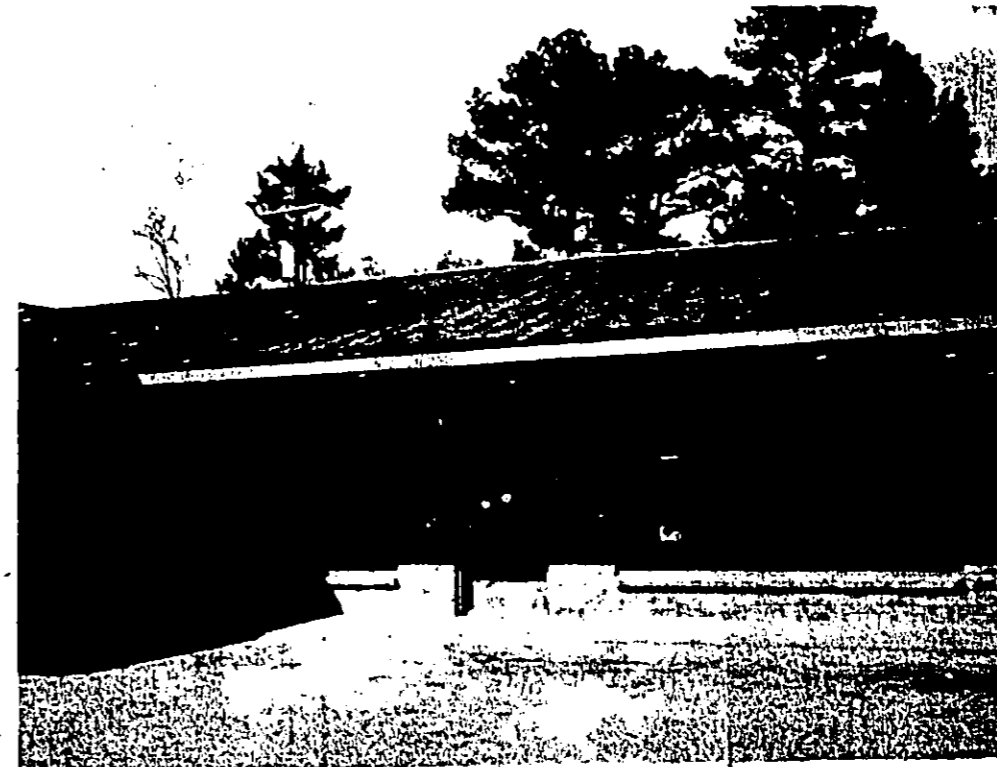
W. Bluff Quarters Being Prepared

Workmen are busy renovating the space in the Boykin Building formerly occupied by Mack's Auto Parts, 1008 West Bluff (next door to the WOODVILLE STAR) for the new offices of the Jasper Federal Savings and Loan Association Woodville branch.

"Please be advised that the Federal Home Loan Bank Board of Little Rock and the Federal Home Loan Bank Board of Washington, D.C., has approved Jasper Federal Savings & Loan Association's application for a full service branch office facility to be located at 1008 West Bluff Street, Woodville, Texas.

"We feel that this branch office will help us to better serve our many customers in Woodville and Tyler County. We are hopeful of opening this office for business within the next sixty (60) days.

"We are looking forward to becoming a part of your community, and if this information could be used by your paper, it would be appreciated."



FUTURE HOME OF Jasper Federal Savings and Loan Association, 1008 W. Bluff, Woodville. Eddie Faircloth and Son are doing the renovation work.

We found our reporter! We found our advertising man! We are still looking for a competent ad and page make-up person! If you qualify and want to join an aggressive organization, give us a call: THE HERALD IS ON THE MOVE!

FEB 24 77



GAMERAMA WINNER AT DUE'S MINIMAX—Danna Jordan was the lucky winner of \$100 cash at Due's Minimax in Jasper. She was among many winners to date and the Gamorama giveaway continues and prizes of cash will be awarded as they are won by the customers in the continuing participation by Due's customers from the area.

Farm boys vs. city boys on land values proposal

By CAPITOL STAFF

AUSTIN—A House divided by urban versus rural property tax loads tangled Tuesday over legislation to establish separate statewide agriculture land use values for farm, ranch and timber land.

Early into Rep. Bill Sullivan's HB 22 to implement a system of separate assessment for open-space land devoted to agriculture production, House members voted 77-67 against postponing further consideration of the measure for 30 days. But they called a halt to mid-afternoon debate to allow previously scheduled committee hearings to go ahead as posted.

"The fiscal implication on local governments is not fully known," Houston Rep. Ron Waters said in seeking what he said is time needed to determine the bill's impact on school finance and local fund assignment.

"We must settle the issue of agricultural use values," New Braunfels Rep. Bennie Bock said in opposition to the delay.

"All you are doing if you vote for postponement is inviting criticism of this Legislature," he said. "This bill has benefits for all the people of Texas."

Sullivan's bill, to become effective Jan. 1, 1978 only if a separately proposed State Constitutional Amendment is adopted to establish separate tax values for agricultural land use in the state, would give the state comptroller authority to promulgate

Dozer And Blade Work

BLACK TOP DRIVEWAYS

All kinds of dirt, top soil and gravel

283-2810 283-3044 283-2177

283-2231 P. O. BOX 98

Sullivan's Hardware

For all your hardware needs

WOODVILLE TEXAS

PIONEER CHAIN SAWS

Built for the long run.

DURHAM SAW CO.

CHAIN SAW HEADQUARTERS

Completes Saw Service and Parts Dept.

BEAUMONT HWY. PHONE 283-2750 WOODVILLE, TEXAS

Congress puts one over on us

It's all over but the shouting. Congress has managed to grant itself a sharp pay raise (2.9 percent) without House members even having to vote on the issue. The method by which the pay increase was authorized only can add fire to the argument that congressional ethics are a sham.

The raise extends far beyond Congress. It includes the vice president, federal judges and top-level appointees in the Executive branch. All told, 22,000 federal officials are affected. The cost to the taxpayer will be \$108.5 million annually.

Congressmen were able to reap this bounty without having to go on record as favoring or opposing the measure because of a 1967 law which stipulates that increases in salary automatically take effect 30 days after being sent to Capitol Hill unless either house vetoes them.

Gerald Ford, in one of his last acts as President, made the recommendations Jan. 17. Senate foes of the pay hike managed to force a vote on the issue there (where the hikes won approval), but House leaders chose to avoid a vote and let the raises occur automatically.

House Republicans did make one last-ditch attempt to force a vote Wednesday, but the move required unanimous consent and an objection from a California congressman killed any hopes of a direct vote.

Because of this sleazy maneuvering, the ordinary citizen doesn't even know whom to blame for the raises. House members can tell angry constituents that they didn't even get to vote on the issue, so they can't be held accountable.

Aside from the cowardly way the lawmakers went about raising their pay, we also don't think it is fair to the appointees and civil service employees for their salary hikes to be lumped together with members of Congress and federal judges.

There are strong points to be made in opposition to paying lawmakers and federal judges more — points which would not apply to the others covered in the pay package. Appointed federal workers do not have a long string of fringe benefits or a guaranteed lifetime tenure.

It is heartening to find many members of Congress, including some who were for the raises, advocating a plan which would require lawmakers to vote directly on whether or not to grant raises. One bill sponsored by 74 House members would defer the effective date for congressional pay hikes until the next session of Congress so that lawmakers would have to run for re-election on their pay-raise votes.

During the recent presidential campaign, Jimmy Carter favored similar proposals. We hope he will make such reforms an integral part of the campaign for a more ethics-minded Congress.

According to a study by the state's major law firms, the most profitable months for burglaries are December, January, and February.

Cleaners conserve

COLLEGE STATION — Vacuum cleaners conserve both time and energy in many cleaning operations besides on carpeting and upholstery. Mrs. Linda McCormack, a family resource management specialist, says.

"The floor brush attachment is used on bare floors, linoleum or tile types of covering, such as those used in kitchens, utility room or bathroom. The brush can also be used for dusting painted and papered walls.

Mrs. McCormack is with the Texas Agricultural Extension Service, The Texas A&M University System.

SPECIALS

ROUND STEAK 1.39

PARADE Milk 1.69

Gold Medal Flour 1.69

LEAN GROUND BEEF 99¢

GRAMMER'S SPECIALS FOR FEBRUARY 24-26-28

Smoked HAM HOCKS, lb. .79
Beef SHORT RIBS, lb. .79
Rump ROAST, lb. 1.39
Zummo BOLOGNA, lb. .89
Hormel PRESSED HAM, lb. 1.39
FRENCH FRIES, 2 lb. .69
Frozen STRAWBERRIES, 10 oz. .99
Chef Boy-ar-dee little PIZZAS, 4 sausage .29
CARROTS, 1 lb. bag .29
AVOCADOS, 4 for .29
Southern Pride BISCUITS, 6 for .79
LETTUCE, 1 head .39
Elgin MARGARINE, 1 lb. solid .39
Trappay's hot CHERRY PEPPERS, 12 oz. .65
Mrs. Tucker's SHORTENING, 8 lb. bucket .3.69
Ranch Wagon red KIDNEY BEANS, 12 oz. .27
HAMBURGER HELPER, assorted .65
Libby's SPANISH RICE, 15 oz. 3 for 1.00
Parade PAPER TOWELS, roll .55
Hunt's whole TOMATOES, 28 oz. .75
FRUIT COCKTAIL, 30 oz. .75

WIENERS LB. 89¢

FRESH PAN SAUSAGE LB. 1.19

SLICED SLAB BACON LB. 1.39

ARM ROAST LB. 1.19

GRAMMER'S GROCERY PHONE 283-2520
1403 WEST BLUFF WOODVILLE, TEXAS

TYNDALL'S TRUCK STOP CAFE

GAS-DIESEL & ROAD SERVICE

COMPLETE TRUCK SERVICE

PHONE 283-5281
Highway 69 South Woodville, Texas

PINES THEATRE

On the Square --- Woodville

OPEN EVERY THURSDAY, FRIDAY, SATURDAY - 7:30 PM

New, complete Stereo Sound has been installed in the Pines Theatre they will reproduce clearly, accurately, and with more volume than we will ever use—the complete sound track of any motion picture. We now believe that you can see and hear movies in the Pines Theatre at a quality level comparable to any theatre. Come out and see how enjoyable a movie can be.

FEBRUARY Walt Disney's 24-25-26 GNOMEMOBILE

PLUS NIKO AND THE ELEPHANT

Show starts at 7:30

HELEN HELP US!

by Helen Bottel

Dear Helen:

This happened just before school was out. There's a guy who's been making me a nervous wreck. I think he likes me. I'm only 14.

"One day he offered me a piece of gum. Now you might think this is normal, but he was the one who put it in my mouth."

Another time after class when it was late, he said, we better leave or we'll be locked in. Jokingly, I said, "Oh no, we'll be together overnight." He said, seriously, "Yeah, how would you like to be alone all night with me? We could really talk." Something like that, anyway.

I could fill a book with his sexy remarks and actions. This guy is married, a father and a teacher. I'm almost certain to be in his class next year.

Should I practice (to myself) telling him off over the summer so I'll be prepared? — CONNIE

Dear Connie:

Why not practice forgetting all about him this summer? You'll be surprised how old and unsexy he will appear to you next fall. — H.

Dear Helen:

You've got to help me. I get treated worse than the dog at home. In fact my dog loves me. Nobody else does.

The other night I told my mother how I felt, and that I wished I was dead. I asked her why she didn't leave me on a doorstep when I was a baby, and she said she didn't know I would grow up to be a dirty, good for nothing, lazy bum.

I asked her why didn't she throw me out on an orphanage; I'd probably get quieter parents. She said she would, but they wouldn't want me.

She gets burned up at every little thing and beats me with the vacuum rod and pulls the hair out of my head over stuff like the charcoal for the fish tank being knocked over and spilled.

When I do something wrong, I always apologize, but she says my sorries are a bunch of (bad word).

I'd run away except I don't have any food or money and no place to go. Help! I can't take it any longer — Yours (I wish I was), LOVELESS

Dear Loveless:

If only I could point my finger and say, "Zap! You're friends," I wouldn't feel so frustrated when I get letters like yours.

What happens in "hateful" families is that too many people scream and too few listen; too many vent their miseries on each other because they hate their lives and need a whipping boy (or girl).

Your mother is a nervous, unhappy woman. She strikes out in childish ways because she wants to hurt. If you can understand this, perhaps you can be the figure one who comes three-fourths of the way toward a better relationship.

Try talking it over at a quiet time. And remember: If one person behaves as an adult, the other may follow suit. — H.

Dear Helen:

After reading what "Troubled 12-Year-Old" said, I had to write. I, too, have an older brother and, like normal kids, we had our arguments. I thought sure I hated him and often wished he was dead or anyway gone. I even thought of running away, but I didn't because deep down in my heart I really loved him.

Brothers and sisters will always have fights. It's part of growing up, but before you know it, kind-ness, love and praise have won out.

All our disagreements now seem so childish and silly. You see, my brother is in Vietnam and all I can think of is how much I want him to come back alive! — SISTER OF A SERVICEMAN

KEOZOOZ

REPEATS
JOB PROGRAMS

The Cherry Tree

Calling Colleen Part-Time Friend Seems To Want Out

By COLLEEN DUDGEON

I'm engaged to be married in June and I have a sticky situation. I hope you can help me deal with it. I'm really in love with my fiancée and I'm looking forward to a happy life with him. That's what I want. The problem is the bad thing is that my fiancée is not working in St. Louis which is about a 3 hour car ride away from me. I can only see him on weekends and during the week I get so lonely I could die. I had gotten engaged during the week I do something wrong, I always apologize, but she says my sorries are a bunch of (bad word).

I'd run away except I don't have any food or money and no place to go. Help! I can't take it any longer — Yours (I wish I was), LOVELESS

Dear Loveless:

If only I could point my finger and say, "Zap! You're friends," I wouldn't feel so frustrated when I get letters like yours.

What happens in "hateful" families is that too many people scream and too few listen; too many vent their miseries on each other because they hate their lives and need a whipping boy (or girl).

Your mother is a nervous, unhappy woman. She strikes out in childish ways because she wants to hurt. If you can understand this, perhaps you can be the figure one who comes three-fourths of the way toward a better relationship.

Try talking it over at a quiet time. And remember: If one person behaves as an adult, the other may follow suit. — H.

Dear Helen:

After reading what "Troubled 12-Year-Old" said, I had to write. I, too, have an older brother and, like normal kids, we had our arguments. I thought sure I hated him and often wished he was dead or anyway gone. I even thought of running away, but I didn't because deep down in my heart I really loved him.

Brothers and sisters will always have fights. It's part of growing up, but before you know it, kindness, love and praise have won out.

All our disagreements now seem so childish and silly. You see, my brother is in Vietnam and all I can think of is how much I want him to come back alive! — SISTER OF A SERVICEMAN

for and about Teenagers

By PATRICK EDWARD

THIS WEEK'S LETTER: I see you obey the rules, they recognize it and give you more responsibility. It's all right to go to school from the school library. Your teacher probably has extra work you can do. Communicate to your parents about how you feel. Perhaps there's some chores you can help do with. There's a lot to do in this world. Get clear on what your real interests are, and then pursue them with the help of your teachers and your parents.

Because of the volume of mail, responses are limited. Please do not expect an editorial team to respond to every letter. We will try to publish as many as possible. Send your letters to: PATRICK EDWARD, BOX 428, PHOENIX, AZ, 85001.

OUR REPLY: Accept the way things are, that's the only way they'll change. Once your parents

CROSSWORD PUZZLE

ACROSS
1 Nucleus
2 One partic-
3 Willow
4 Hebrew lyre
5 Retabolin
6 Ben Lomond
7 Per East
8 staph
9 Ladies
10 Horrors!
11 European
12 (abbr.)
13 "Krazy"
14 Ken
15 The Cana-
16 English
17 "First Lady"
18 Most
19 On re-
20 Stravinsky
21 Intocor-
22 John
23 Pichon
24 Abratic
25 wind
26 Zivago's
27 Cuzing
28 Flabber-
29 Sittie
30 King (Fr.)
31 Proport
32 Sittie for
33 Infant
34 Becham
35 Street Arab
36 Gerning
37 King (Sp.)
38 Man's
39

DOWN
1 Took heed
2 "The Brock-
ton Block-
buster"
3 (1 wd.)
4 Before
5 Draw
6 Alder tree
7 (abbr.)
8 Newman
9 Island film
10 "The
11 "Along"
12 Complex
13 Symbol of
14 Victory
15 Choice
16 "Madame
17 "The
18 "The
19 "The
20 "The
21 "The
22 "The
23 "The
24 "The
25 "The
26 "The
27 "The
28 "The
29 "The
30 "The
31 "The
32 "The
33 "The
34 "The
35 "The
36 "The
37 "The
38 "The
39 "The

YOUR WEEK AHEAD BY DAMIS

Forecast Period: February 28 to February 28

ARIES Mar. 21-Apr. 19
Financial affairs of others come to the fore. It's time for you to get out from under some unwelcome credit obligation.

TAURUS Apr. 20-May 20
Your kindly consideration of family and friends is emphasized during this optimistic period. The world is beautiful!

GEMINI May 21-June 20
You may feel the need for quiet aloneness to regenerate the Gemini batteries that keep you in high energy.

MOONCHILD June 21-July 22
Show a lot of drive and responsibility for the job. Keep your boss aware of your aims.

LEO July 23-Aug. 22
A surprise element comes up and forces a decision. Will you favor the home front or does the job get first consideration?

VIRGO Aug. 23-Sept. 22
Intuition is high. Make good use of your many hidden talents. Philosophical studies are intriguing.

LIBRA Sept. 23-Oct. 22
Unexpected happenings develop regarding the Gemini batteries. Keep the family budget in balance, resisting pressures to do otherwise.

SCORPIO Oct. 23-Nov. 21
Emotional upsets can be taken in stride if you remember to keep your cool. Love is the answer.

SAGITTARIUS Nov. 22-Dec. 21
An opportunity for you to serve others comes up and brings a feeling of happiness, and a job well done.

CAPRICORN Dec. 22-Jan. 19
Family get together is very pleasant. The children, especially, create a happy atmosphere. Romance is there, too, so watch out!

AQUARIUS Jan. 20-Feb. 18
Matters in the home are of first importance. A rearrangement of furniture provides a welcome change and adds to convenience.

PISCES Feb. 19-Mar. 20
Mental stimulation is strong. You get involved with neighbors and relatives in lively discussions on new ideas.

SENIOR CITIZEN'S CORNER

HELPFUL IDEAS FOR SUCCESSFUL RETIREMENT

One of the major factors determining how a couple live and migrate is how they spend their time in retirement monthly income. For many in the northeast or midwest, the ideal situation is "home" in spring, summer and fall, winters in Florida. Some people plan this arrangement year after retirement, purchase property in Florida which they occupy during the coldest months. Leave the rest of the year for year-round living.

Some couples with adequate resources don't bother to buy property down south. They lease condominiums for four-month periods, say December through March. This arrangement suits many retired couples who have no children or grandchildren to whom they find funds in both communities and look forward to visits.

These examples may be exceptions to the rule. Many retirees cannot afford to move anywhere, home is the cabin or cottage on the lake which served as a weekend vacation spot during the working years. People who enjoy the outdoors, who like to fish, for example, sell their "city" home at retirement time and use the proceeds to "upgrade" a summer home or lakeside cabin for year-round living.

Retirement gives them the time to pursue hobbies, to garden, to putter about here and there, to reap the real benefit of retirement, done whatever one wants or doing nothing at all.

FUNNYSIDE

HEAR ONE OF YOUR BOYS MIGHT BE ALL-STATE THIS YEAR!

BUDDYRUFF

WHAT'S UP, BOY? YOU LOOK MAAD!

I GOT UP EARLY THIS MORNING WITH NO HANGOVERS ON THEM!

I HATE GUNS AND DON'T SHOOT VALENTINES... HOW CAN I LOSE THEM?

WHY ARE YOU SO NEARBY IT?

HUM-A-MYSTERY... WHO ROSE THE CLIFFTOP?

from HISTORY'S SCRAPBOOK

DATES AND EVENTS FROM YESTERYEARS

February 18, 1920 — The planet Pluto is discovered by astronomer Clyde W. Tombaugh, working at the Lowell Observatory, Flagstaff, Arizona.

February 18, 1881 — Kansas adopts statewide prohibition of all alcoholic beverages.

February 28, 1868 — The Supreme Court rules that the power of the federal government is greater than that of any individual state of the Union.

February 21, 1978 — A telephone directory, the first of its kind in the world, is issued by the New Haven Connecticut Telephone Company. The names of 50 subscribers are listed in the directory.

February 22, 1919 — In a treaty with Spain, Florida is ceded to the United States.

February 23, 1854 — The first mass inoculations of school children with the bulk antipollomyelitis (anti-polio) vaccine begin in Pittsburgh.

February 24, 1948 — Juan Peron is elected president of Argentina.

OIL TALKS

THE WORLD DOES WHAT WE TELL 'EM... RIGHT OIL?

MIDWEST OIL

Keep stray electric cord away.
Clean the heater frequently to remove dust and debris.
Don't let infants crawl near electric baseboard.
Check the heater that the inside coil — even the outside metal cover — can be hot enough to burn.

Auto Service Tips

WINDSHIELD WASHER — TO ASSURE SAFE VISION IN ALL KINDS OF WEATHER, ADD GARNETT TO YOUR WASHER FLUID TO LIFT DIRT AND INSECT CAJARS. WHEN NOT SQUIRTING FULLY, WASHING MAY NEED NEARER OR REPLACEMENT PUMP.

WARNING: NEVER MIX THE WINDSHIELD.

CONSUMER GUIDELINES

Safety Tips

Some electric baseboard heaters are hot enough to cause materials touching them to burn.

—Keep drapes, bedding, shag rugs, toys and all combustible objects away from these heaters.

—Don't let infants crawl near electric baseboard.

—Check the heater that the inside coil — even the outside metal cover — can be hot enough to burn.

SPORTS SPECIAL

Why Speedy Talented Tiny Archibald...

HAS BROUGHT EXCITEMENT TO RED BASEBALL FANS AND HAS DISTINGUISHED HIMSELF WITH MANY OUTSTANDING FEATS.

• HE BECAME THE FIRST GUARD IN HISTORY TO SCORE OVER 1000 POINTS IN A SEASON—1008.

• SCORED THE MOST POINTS IN A SEASON—719.

• PILED UP THE MOST ASSISTS IN A SEASON—710.

• PLAYED THE MOST MINUTES (5831) OF ANY GUARDED SLAYER MARIN IN '54.

• MADE TINY SCORED 30 OR MORE POINTS IN 18 GAMES 50 OR MORE TIMES IN 18 GAMES HE DID ALL THIS IN A KANSAS CITY KINGS UNIFORM. NOW HE'S WITH THE N.Y. NETS BASED NEAR HIS S. BROWN HOME.

DUE'S **MINIMAX** DISCOUNTS

The Consumer Alert
by John L. Hill
Attorney General

AUSTIN—If you object to the Internal Revenue Service taxing not only your income but your brains, you can always seek outside assistance in completing your annual tax return.

Our Consumer Protection Division attorneys say that the type of help you choose is very important than making sure the person you select to prepare your return meets the three C's. He or she should be **careful, competent, and completely honest.**

Tax preparers may be your next-door neighbor, a small local firm, or a giant national chain. Most are in operation only between January and April. In order to avoid tax preparers usually seek at home, moonlighting after regular jobs. Most have no special qualifications except, perhaps, an aptitude for figures and an understanding of IRS forms.

Local tax firms often flourish during tax preparation months, then often disappear. Large national chains may have thousands of offices. These usually have training programs for preparers, but none of these tax preparers must pass a test to acquire a license. IRS studies have shown that about half the returns prepared in individual local and national tax preparers may contain errors or omissions. You should use caution if you plan to hire a commercial tax preparer, and you probably should not go to one if your return is to be a complicated one. Prices for these services generally are less than \$20 or less for a short tax form. Tax preparers are required by IRS to appear as a preparer if you are a Certified public accountant, and training requirements and must have passed a rigorous examination. Our office represents the Texas State Board of Public Accountancy, the agency charged with licensing CPAs. If you make more than \$20,000 and your return is somewhat complicated, you may want to consider the services of a CPA. While a CPA's charge generally is quite a bit higher than individual or commercial tax preparers, the studies mentioned earlier indicate that CPAs make fewer mistakes. CPAs also represent you with the IRS. Enrolled agents may be former IRS agents with five more years of IRS service or persons who have passed an exam in tax laws, regulations and procedures which is given by the IRS Treasury Department. Enrolled agents may not advertise, but the IRS may be able to supply lists of those in each district. This can represent you with the IRS. Tax Court exam below this can represent you or that court.

If you are in a very high income bracket and have a complex return, a tax attorney may help by advising you of legal points and by reviewing returns prepared by a CPA or enrolled agent. Some tax attorneys deal only with corporations. If you do hire a tax attorney, you will pay a considerable fee. However, if the attorney determines that your return doesn't require special legal advice, most will refer you to a CPA or enrolled agent. Attorneys can represent you with IRS in Tax Court, and in appeals court.

1. Be wary of someone who guarantees in advance that you will get a refund, and never deal with one who suggests deceptive and illegal reporting.

2. Don't sign your return in advance. Always sign only after checking it over, and making sure the preparer has also signed as required by law.

3. Avoid any preparer who wants you to contribute to sending any refund check to him or her, instead of direct to you.

PICKLES LARGE GRADE A

EGGS 79^c

Doz.

Limit 2 With \$7.50 or More Purchase

Due's Minimax

"Due's Minimax Brought Low Prices To Jasper"

When you're shopping for groceries, want the best and wish to keep within your budget, you will find Due's Minimax located on South Wheeler Street in Jasper the first and last place you will need to go.

Due's Minimax is well known as the store where one can shop with ease. Here may be found in neat, orderly display, canned foods of all sorts, baked goods, a wide assortment of dairy products, the freshest fruits and vegetables available, plus a selection of quality meats, cut, packaged and ready for your choosing.

At Due's Minimax, you will find numerous other items for the household, and this enables area customers to get what they need without having to go from store to store.

We, in this 1977 Review of the Trade Area, urge you to shop at Due's Minimax where you can save money on your food purchases. We all know that costs have skyrocketed, and Due's Minimax has tried to do something positive about protecting your weekly budget. They have arranged weekly specials on both basics and meats which will allow you greater latitude for economy menu planning. They plan their specials so you can consistently save...so that each week you can turn up a lower cost for your food budget. Shop and save at Due's Minimax in Jasper.

PLAY THE ALL NEW SERIES 12

gamerama

WIN UP TO \$1000

Odds Chart as of January 27, 1977

| PRIZE VALUE | NO. OF TICKETS | TICKETS FOR ONE \$1000 VISIT | TICKETS FOR 13 \$1000 VISITS | TICKETS FOR 26 \$1000 VISITS |
|-------------|----------------|------------------------------|------------------------------|------------------------------|
| \$1,000.00 | 12 | 217,827 to 1 | 16,363 to 1 | 8,181 to 1 |
| 250.00 | 100 | 2,667 to 1 | 205 to 1 | 102 to 1 |
| 100.00 | 200 | 1,333 to 1 | 102 to 1 | 51 to 1 |
| 50.00 | 400 | 667 to 1 | 51 to 1 | 26 to 1 |
| 25.00 | 800 | 333 to 1 | 26 to 1 | 13 to 1 |
| 10.00 | 1,600 | 167 to 1 | 13 to 1 | 6 to 1 |
| 5.00 | 3,200 | 83 to 1 | 6 to 1 | 3 to 1 |
| 2.50 | 6,400 | 41 to 1 | 3 to 1 | 1 to 1 |

Scheduled termination, April 28, 1977.
*If you visit a participating store 26 times in the 13 weeks of this promotion your chances are 1 in 416 for winning a cash prize!

RAINBO

PEACHES 39^c

NO. 2 1/2 CAN

Limit 3 Please!

STAR KIST BREAD 'O' CRACKEN

TUNA 49^c

6 1/2-OZ. CAN

LIMIT 3, PLEASE

GOOD VALUE

MAG & CHEESE DINNERS 5\$1

7 1/4-OZ. BOXES

GOOD VALUE

SALAD DRESSING 59^c

32 Oz. Jar

Sunshine Fresh

KRISPY CRACKERS 49^c

16 Oz. Box

Duncan Hines Assorted

LAYER CAKE MIXES 59^c

18 1/2 Oz. Box

Good Value

PINTO BEANS 39^c

2 Lb. Bag

SOFT'N Pretty

BATH TISSUE 69^c

4 Roll Pkg. White or Decorated

HOLLY FARMS USDA GRADE A

FRYERS 45^c

OWENS PURE PORK SAUSAGE - LB. \$1.09

Ribeye Steak HEAVY NORTHERN BONELESS BEEF, LB. \$2.99

Center Cut Rib ARMOUR VERIBEST, LB. \$1.49

RATH SAUSAGE TENDER, MEATY, 1 LB. ROLL, 69^c

FRESH FROZEN TURBOT FILLETS, LB. \$1.09

FRESH FROZEN PERCH FILLETS, LB. \$1.19

FRESH FROZEN FLOUNDER FILLETS, LB. 79^c

FRESH FROZEN SHAPPER FILLETS, LB. \$1.19

ARMOUR VERIBEST QUARTER (9-11 CHOPS), LB. 109

Lunch Meats: O.V. Sliced, 12-OZ. Pkg. \$1.79; O.V. Chopped, 12-OZ. Pkg. \$1.79

COKE'S 25^c

32 Oz. BTL. Plus Deposit

LIMIT 6 PLEASE

LAND O PINE

BUTTERMILK 69^c

1/2 Gal. OR GALLON

FRUIT DRINK 89^c

LIBBY CREAM or W/ K

CORN 303 Can

GOOD VALUE

GREEN BEANS 303 Can

LIBBY SLICED or CUT

BEETS 303 Can

Mix or Match

4 For \$1

CAMPBELL'S

CHICKEN N' NOODLE or CREAM OF MUSHROOM

LOUISIANA HOT SAUCE

GOOD VALUE Yellow or White

HOMINY \$1

Mix or Match

5 For \$1

CRISCO 3 LB. \$1

WITH \$10 PURCHASE

TYLER

ROSE BUSHES 2 \$3

WHILE QUANTITY LAST!

GOOD VALUE

MARGARINE 3 89^c

1 LB. PKGS.

CRINKLE CUTS 5 LB. 89^c

GOOD VALUE FROZEN POTATOES

U.S. NO. 1 RUSSET

POTATOES 59^c 89^c \$1.69

5-LB. BAG 8-LB. BAG 15-LB. BAG

SEDLISS NAVEL SUNKIST

ORANGES 10 FOR \$1

Avocados FROM CALIFORNIA 4 FOR \$1

TANGERINES 3 \$1

SUNKIST MINEOLA 3 LBS.

GOLDEN RIPE BANANAS 5 LBS. \$1.00

SHASTA

CAN DRINKS 7 \$1

ASST. FLAVORS 12 Oz. CAN

LAZZO ONTO THESE LOW PRICES ON HEALTH & BEAUTY AIDS!

\$1.50 COUPON OFFER BY MAIL FROM Cheesebrough-Pond's Inc. When you buy these 4 items* *get required certificate in our store

Vaseline INTENSIVE CARE LOTION (Regular or Herbal) 10-OZ. BTL. 99^c

Vaseline INTENSIVE CARE BATH BEADS (Regular, Herbal or Mineral) 15-OZ. BOX 139^c

WETTING SOLUTION BARNES HIND 2-OZ. BTL. 199^c

BABY POWDER SUPER D 14-OZ. CAN 79^c

SURE ROLL-ON TRIAL SIZE 1-OZ. BTL. 45^c

COLD CAPSULES SUPER D PKG. OF 12 49^c

BABY SHAMPOO SUPER D 16-OZ. BTL. 85^c

SCOPE ANTISEPTIC MOUTHWASH AND GARGLE 24-OZ. BTL. \$2.15

15 FIFTEN SPECIALS

77 CHEESE 59^c

HI-DRI

PAPER TOWELS 39^c

JUMBO ROLL

LIMIT 3 PLEASE

FACTS & FIGURES

For each tree harvested by one major paper company, five seedlings are planted. Many of these new trees are specially bred to grow 75 percent more fiber per acre per year than ordinary southern pines.

Nearly 51,000 people are employed by that company, International Paper. Those jobs depend in part on capital investments in the company and those investments are attracted to efficient operations.

Paper manufacturing is located only in the chemical industry in the high investment, high technology, high capital intensive industry. It is a capital intensive industry. It is a capital intensive industry. It is a capital intensive industry.

CLASSIFIED CORNER

FREE WANT ADS FOR 2 WEEKS!

For the next two weeks, we will accept want ads Free of Charge in the HERALD. Now is the time to sell off unwanted items and get your message to lots of neighbors. Phone or mail your classified ads to us during the next three weeks by our deadline—Monday at 4:00 p.m.—and we will run them absolutely free.

We will not accept free classified ads from commercial enterprises. This is for individuals only.

I want a Hide-a-Bed Sofa and King Size Bedroom Suite. If you have one for sale, call 385-3536 or 385-6108.

Two adorable female dogs for sale. They are one year old, half-Beggie and half-Cairn, and \$10 will get you your choice of either one. Call 283-8528.

It's almost boating weather, and we have a 14' Wellcraft V bottom bass boat, trailer, and new 7.5 HP motor for sale.

The best and trailer is a steal at \$550. The motor is \$325. Call 837-5347.

Don't miss the big three-family garage sale this Saturday, February 26, from 9-5. It is one block past the caution light, on Highway 256, in Colmesneil, at that green apartment-type building on the right.

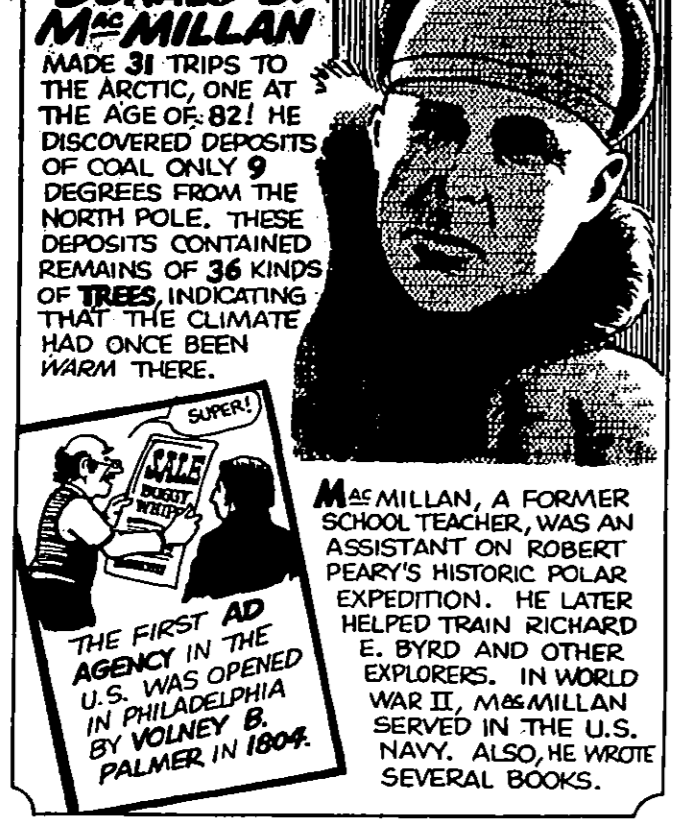
Need a travel trailer? Then check out this 27' Marauder self-contained travel trailer with 3-way ice box, air conditioning, and central heat. 1975 model in good condition. Only \$4,000. Call 428-3777.

Come on out to this giant five-family garage sale. And there will be children's and ladies' clothing, a stroller, baby swing, household goods, misc. It's a green house on Highway 418 at Dilla Road. Sour Lake area only. I want to buy boy's size 14 and 16 clothing in good condition. Also would like to trade plants with interested persons. Call 287-3787.

Tremendous garage sale going on February 24, 25, 26, at the second house behind the post office in Kountze. There's a mattress, refrigerator, range, children's clothing, and dishes among the goodies.

Government Costs Newly completed studies show that the federal government now costs the average American family \$5,287 a year. The costs consist primarily of tax, social security and government regulation monies, plus inflation.

DID YOU KNOW? By Jeanie



POLAR EXPLORER DONALD B. McMILLAN
MADE 31 TRIPS TO THE ARCTIC ONE AT THE AGE OF 82! HE DISCOVERED DEPOSITS OF COAL ONLY 56 DEGREES FROM THE NORTH POLE. THESE DEPOSITS CONTAINED REMAINS OF 26 KINDS OF TREES, INDICATING THAT THE CLIMATE HAD ONCE BEEN WARM THERE.

McMILLAN, A FORMER SCHOOL TEACHER, WAS AN ASSISTANT ON ROBERT PEARY'S HISTORIC POLAR EXPEDITION. HE LATER HELPED TRAIN RICHARD E. BYRD AND OTHER EXPLORERS. IN WORLD WAR II, McMILLAN SERVED IN THE U.S. NAVY. ALSO, HE WROTE SEVERAL BOOKS.

Thinking of selling your home? Do you have a prospective buyer? Do you know how to arrange financing? Do you know the value of your property? Do you need professional advice, at no cost to you? We have an appraiser in our firm approved for G. I. LOANS. If you have been denied to call a Real Estate firm, please feel free to call us. We charge nothing for information and our service is confidential. Contact the Herald office, 1006 W. Bluff, Woodville, or phone 283-5332.

EDDIE KIER
547-2722
Beaumont, 835-1434

Order Your Want Ad BY MAIL

It's Easy... It's Fun!

CLIP AND MAIL TO THE HERALD. PAY ONLY FOR WORDS SUBMITTED. WE WILL REWRITE INTO A FOLKSY PARAGRAPH.

| NAME | STREET | CITY | PHONE |
|--------------|-------------|------------------|-------|
| _____ | _____ | _____ | _____ |
| RUN AD _____ | WEEKS _____ | ENCLOSE \$ _____ | |

| | | |
|---------|--------|--------|
| 1 Line | 1 Week | \$1.00 |
| 2 Lines | 1 Week | \$2.00 |
| 3 Lines | 1 Week | \$3.00 |
| 4 Lines | 1 Week | \$4.00 |
| 5 Lines | 1 Week | \$5.00 |
| 6 Lines | 1 Week | \$6.00 |
| 7 Lines | 1 Week | \$7.00 |
| 8 Lines | 1 Week | \$8.00 |

THE MARKET PLACE

Where our readers Buy Sell Rent Hire Trade

One acre for sale in the Spurger area. Near the river, on a dead-end road. Private. Artesian water, electricity, telephone. Anyone interested, contact Walt Dever at 429-3585.

I have one or two spaces for small homes. It is near all stores and the postoffice in the city of Kountze. Look it over, then contact Gory Beason at 246-3016.

Do you have timber for sale? If so, call us to get the most for your timber. Jack E Meek, 379-8104 or Bill Mondan, 385-3457.

PUNCH LINE
OUR ANSWERING SERVICE IS UNDER REPAIR. THIS IS A PERSON SPEAKING.

Classified Rates
Effective January 1, 1977

| | |
|-------------------------|------------------------------|
| Reader Ads | 6c per word first insertion |
| | 5c per word second insertion |
| | 4c per word third insertion |
| | Minimum \$1.00 |
| Fourth insertion - Free | |
| Card of Thanks | \$2.00 Set Rate |

Box Numbers
120 Set
Class Display Ads
\$1.20 per column inch

Pre-Paid Ads
REFUNDABLE

Class Deadlines
MONDAY AT 4:00 P.M.
All ads must be in at that time. Payable in advance.

Box Numbers
120 Set
Class Display Ads
\$1.20 per column inch

Pre-Paid Ads
REFUNDABLE

Class Deadlines
MONDAY AT 4:00 P.M.
All ads must be in at that time. Payable in advance.

HELP WANTED
WANTED: Need interested person to help with newspaper ad and page make-up. Experienced person preferred. If you do not like this type of work, do not waste our time. Contact the Herald office, 1006 W. Bluff, Woodville, or phone 283-5332.

Order Your Want Ad BY MAIL
It's Easy... It's Fun!

CLIP AND MAIL TO THE HERALD. PAY ONLY FOR WORDS SUBMITTED. WE WILL REWRITE INTO A FOLKSY PARAGRAPH.

6c Per Word - \$1 Minimum
All classified ads must be paid for in advance. Deadline for submitting ads is Tuesday at 4 p.m. each week.
Use The Market Place regularly!

CITIZENS EXTERMINATING CO.

TERMITE & PEST CONTROL

TERMITES ANTS SILVERFISH MOTHS

Texas PCL 3016 PT

BOBBY GILLÉY 384-9990
257 EAST LEALA JASPER, TX.

REAL ESTATE

11.3 acres, county road frontage, high level land
3.4 acres, 2 BR house, hwy, frontage and city water
12.82 acres, underbrush, fenced with lake site, beautiful hardwood area and level land.
1.97 acres on highway 256
1.73 acres on hwy. 256 near Camp Niwama, open land, some trees.
LOTS, RANCHETTES AND ACREAGE, hardwood trees, at Spurger.

ACREAGE

15 - 25 & 35 ACRE TRACTS AVAILABLE

Any or all rly land will go Texas Veterans.

W. O. JORDAN

OFFICE: 283-5752 HOME: 428-3379

IRON ORE - GRAVEL - CLEAN WASH GRAVEL - TOP SOIL - LIMESTONE ROAD BASE - BULLDOZER and BACKHOE WORK

We install new septic tanks and field lines

They're building more than just a bridge over the river.

They're building character. Determination. Learning to co-operate and to work together.

Today, more than ever, isn't it great to know Scouting is still going strong? Still helping our kids grow up to become good Americans. To be prepared.

Yes, thanks to the United Way and people everywhere, Scouting is still teaching honesty, self-reliance, respect. All the ideals worth believing in. Ideals worth supporting.

Get behind Scouting. Become a Sustaining Member. Make a contribution to your local Scout Council.

Let's keep Scouting more than just a bridge over the river.

HYDE ACRES

Grancy Gray Beard, Dogwood, Berry Plants, Bamboo, Artichokes and other flowering shrubs. Also have petrified wood

190 W. City Limits
Red Brick House behind Art Gallery
Phone: 283-3398

INSURANCE

AUTO - HOME - LIFE - BONDS

CITIZENS OFFICE BLDG.
104 W BLUFF
TOM McGUIRE - Mgr

283-2528

THE HARTFORD

GLOBE-MANN INSURANCE AGENCY

Mail your contribution to The Three Rivers Council, 4650 Cardinal Drive, Beaumont, Texas 77705



MORE OF TYLER COUNTY'S FINEST—First row, 1 to r: George Edward Hartfield, 11; Kimberly and Lena Freeman, 14 and 12 - all of Colmesneil; Valaris and Greg Coward, 10 and 7 of Rockland; Krist and Nyia Creech, 8 and 9 of Colmesneil. Second row, 1 to r: Cheryl Yvette, Carol Susette, Althea Renee Bassett, 14, 6 and 3 of Rockland; Marty and Curtis Duhon, 11 and 8; Lisa, Lena and Melinda Spurlock, 9 12 and 5; Charles Ross, 8 - all of Colmesneil. Third row, 1 to r: Darlene, Andy, Suzanne, and Lynette Martin, 13, 8, 14 and 5; Bruce, Brenda and Robert Richardson, 15, 10, 5 and 12; Kathy Ruth, Sharon, Lois and Brenda Carnley, 13, 7, 10 and 6; George, Rhonda, and Timmy Rogers, 10, 13 and 6 - all of Colmesneil.

Highway finance bill slowed down

By JON FORD
Capitol Bureau

AUSTIN — A House-passed \$562-million highway finance bill tagged by Gov. Dolph Briscoe as an emergency was run off the road for a minimum two-week holdup in the Senate Finance Committee Tuesday.

The committee chaired by Sen. A.M. Aikin of Paris parked the increasingly controversial measure (HB 31) in sub-committee by an eight-to-four vote. Aikin supported the motion for a two-week delay which was offered by Sen. A.R. Schwartz of Galveston.

Gov. Bill Hobby, who had thrown down a challenge to Briscoe and House Speaker Bill Clayton on the issue, thus won at least a cooling-off period. The bill was major spending and tax reduction measures which have been proposed.

Bullcock pointed to the \$1.8 billion Legislative Budget Board general budget, a \$220 million school finance measure, a proposed \$225 million residential exemption on utility sales taxes, a \$29 million utility tax cut and \$5 billion in other emergency appropriations.

If only the LBB budget, school finance and the tax reductions are approved, Bullcock said just \$102 million will be left over for "all other purposes." The LBB bill includes \$156 million in additional general revenue for highways, plus rewording of several million dollars now going to the Department of Public Safety.

A berry that grows in West Africa is 3,000 times sweeter than sugar.

musings

by Emma Drake

This is a fable entitled "Teamwork Will Do It." It is about a little tramp steamship which is given a life and blood personality. The steamship was ordered to be built by Special Interest Incorporated and its subsidiaries. She was christened "BOND ISSUE" for her maiden voyage. Certain trustees, financial wizards and maritime architects whose special expertise guaranteed her to be perfect. Every part and plan for her was supposedly made with the utmost care.

The shipyarders must have some ownership and make payments over a period of twenty-five years or more with the hope she will remain seaworthy. They were told she would sail in full anticipation of a successful voyage. As she came down the ways into the "Sea of Finance," it was discovered all too soon that she had not "found herself."

Troubles began almost immediately. Each part of her became so obsessed with the feeling that it was more important than all the rest. The compass did not find the true cardinal points of energy causing the little steamer to ride into the storm of indecision. The rivets of unethical practice, the strings of communication, the frames of aggressive control, the deck beams of misrepresentation and the strakes of poor judgment groaned and complained. Mutiny among the purchasers (some now believe they were shanghaied) set in, and the little steamer is again lost in a storm of protest.

What counsels within the lighthouse of taxpayers do their best to talk sense, duty and direction into the captain and the crew, but their words seem to have little effect. Not until the waves of citizenship, values and integrity have buffeted and hammered unmercifully creating a fear that all will be lost and sent to Dary Jones' locker will order and truth be restored.

With the establishment of several more qualified crew members, harmony will come with renewed pride and self-respect. A gradual knowledge of seaworthy co-operation will be needed to ride the storms out. The different parts of our steamship worn and settled by time, will begin working, pulling, pushing, giving together and, finally, triumphantly, will reach its destination, "The Port of Better Education."

MORALE: Although we do not like the attitude and policies of the crew of our steamship, we cannot sink the ship. In fact, in times of storm, we must do our best to save it. You see, we are all in this craft, and we must sink or swim together.

ELLENDER AMBULANCE SERVICE

283-2406
WOODVILLE, TEXAS

FULL 24 HOUR SERVICE:

- State Approved Vehicles
- 2 Fully Equipped Emergency Vehicles
- ADVANCE FIRST AID TRAINING
- Emergency or Transfer Calls In Or Out Of City
- Special Rates For Out of Town Trips
- Medicare - Medicaid Forms Processed

M. & Mrs. Fred D. Ellender

SAVE THIS NUMBER - IT MAY SAVE YOU

INSURANCE

AUTO - HOME - LIFE - BONDS

CITIZENS OFFICE BLDG.
104 W BLUFF
TOM McGUIRE - Mgr

283-2528

THE HARTFORD

GLOBE-MANN INSURANCE AGENCY

ELLENDER AMBULANCE SERVICE

283-2406
WOODVILLE, TEXAS

FULL 24 HOUR SERVICE:

- State Approved Vehicles
- 2 Fully Equipped Emergency Vehicles
- ADVANCE FIRST AID TRAINING
- Emergency or Transfer Calls In Or Out Of City
- Special Rates For Out of Town Trips
- Medicare - Medicaid Forms Processed

M. & Mrs. Fred D. Ellender

SAVE THIS NUMBER - IT MAY SAVE YOU

Every Pound Of Cotton Bales Useful

AUSTIN—From start to finish, every step in cotton processing adds value to the completed product long after the farmer has received his share for growing the crop.

"And except for waste and tare (bagging and metal ties), all of the original bale of cotton ends up in three major uses - apparel, household, and industrial," according to Agriculture Commissioner John C. White.

When it first shows up at the mill, a bale of raw cotton tips the scales at an average of 500 lbs., 20 lbs. of which are tare.

An additional 24 lbs. are non-lint waste like dust and vegetable matter, while another 29 lbs. are waste produced in the first steps of the yarn production process.

"The 29 lbs. of usable waste are sold mostly to the textile waste industry and eventually end up as padding and upholstery filling," White explained.

The bale, now down to 427 lbs., will be spun into yarns, roughly 76 lbs. for knit goods, nine lbs. for sewing thread, three lbs. for carpet and tufting yarns, and seven lbs. for specialty yarns. The remaining 332 lbs., or more than three-fourths of the yarn produced, will be woven into fabric.

Clothing fabric alone makes up about 206 lbs., or about half of the total end use.

FINAL SUNSET

Joseph Ling, 75
February 8, 1977
Doucette, Texas

Mollie Mae Mitchell, 80
February 8, 1977
Spurger, Texas

Fletcher Lee Jordan, 47
February 10, 1977
Rockland, Texas

Noel Smith Griffin, 83
February 9, 1977
Woodville, Texas

Noel T. Landers, 68
February 10, 1977
Woodville, Texas

W.C. "Bill" Lilly, 86
February 14, 1977
Rockland, Texas

Celeste May, 79
February 11, 1977
Woodville, Texas

Addie Foxworth, 94
February 17, 1977
Hillister, Texas

Noah A. Platt, 76
February 17, 1977
Hillister, Texas

Nannette Foyke, 55
February 20, 1977
Warren, Texas

W. Arthur Hobson, 83
February 19, 1977
Warren, Texas

Mr. Vernon, Missouri
Donna Jordan McClain, 76
February 18, 1977
Spurger, Texas

NATIONAL BEAUTY SALON

WEEK

Create Beauty...
With a little help from us! Our hair care experts give personal attention and style hair with you in mind. Call us soon.

DIAL 283-5454
OPERATOR: NANCY LANE
HAIRCUT \$3

Now open on Saturdays and Mondaays
LINDA'S BEAUTY SHOP
104 S. Beach - Woodville
Men's haircutting & styling

M & M WESTERN STORE

LADIES WESTERN
SHIRTS 7.00

KIDS
BOOTS 10.99 up

WE HAVE A NEW SHIPMENT OF MEN'S AND WOMEN'S SHIRTS

WESTERN SUN SCREENS 18.99

WORK BOOTS 24.50 up

M & M WESTERN STORE
106 WEST HOLLY WOODVILLE, TEXAS

M & M WESTERN STORE

WE HAVE A GOOD SELECTION OF JEWELRY

KIDS HATS 6.00

MOCASINS 8.00 up

M & M WESTERN STORE
106 WEST HOLLY WOODVILLE, TEXAS

M & M WESTERN STORE

WE HAVE A GOOD SELECTION OF JEWELRY

KIDS HATS 6.00

MOCASINS 8.00 up

M & M WESTERN STORE
106 WEST HOLLY WOODVILLE, TEXAS

HEINS EQUIPMENT CO. INC.

SALES SERVICE PARTS

JOHN DEERE EQUIPMENT
LAWN & GARDEN
AGRICULTURE
INDUSTRIAL
CONCRETE

HWY. 29 SOUTH LIVINGSTON TEXAS
PHONE 327-5718

BRENT HARPER
SALES REPRESENTATIVE HOME 387-8108

USED APPLIANCES

16 LB. LOAD G. E. WASHER 95.00

30-INCH NORGE RANGE GAS 95.00

2-DOOR G.E. Coperton, Frost-Free REFRIGERATOR

Rose's TRADING POST

DAM B 283-6636 HIGHWAY 190

NATIONAL BEAUTY SALON

WEEK

Create Beauty...
With a little help from us! Our hair care experts give personal attention and style hair with you in mind. Call us soon.

DIAL 283-5454
OPERATOR: NANCY LANE
HAIRCUT \$3

Now open on Saturdays and Mondaays
LINDA'S BEAUTY SHOP
104 S. Beach - Woodville
Men's haircutting & styling

M & M WESTERN STORE

LADIES WESTERN
SHIRTS 7.00

KIDS
BOOTS 10.99 up

WE HAVE A NEW SHIPMENT OF MEN'S AND WOMEN'S SHIRTS

WESTERN SUN SCREENS 18.99

WORK BOOTS 24.50 up

M & M WESTERN STORE
106 WEST HOLLY WOODVILLE, TEXAS

M & M WESTERN STORE

WE HAVE A GOOD SELECTION OF JEWELRY

KIDS HATS 6.00

MOCASINS 8.00 up

M & M WESTERN STORE
106 WEST HOLLY WOODVILLE, TEXAS

M & M WESTERN STORE

WE HAVE A GOOD SELECTION OF JEWELRY

KIDS HATS 6.00

MOCASINS 8.00 up

M & M WESTERN STORE
106 WEST HOLLY WOODVILLE, TEXAS

Suit Against Mann Dismissed

The Waco Tribune

A \$302,240 damage suit against Robert A. Mann of Waco and four other defendants has been dismissed by the 44th Judicial District Court in Dallas County. The plaintiff, C. L. Chambers, trustee, voluntarily moved to dismiss the pending civil action last week.

When the suit was filed, Mann contended that the case was without merit and said the dismissal supports his position.

The suit had asked for \$102,240 in damages and punitive damages of \$200,000 against the five defendants.

WEDDING BELLS

Marriage license were issued to the following:

- Billy Wayne Brodnax, 21
Jolene Davis, 18
- Gene Edwin Barns, 23
Sandra Sue Mitchell, 23
- Michel Leslie Fontenot, 32
Peggy Gail Woolley, 22
- Garry Dean Brisco, 21
Rebecca James, 20

DAVIS FOOD MARKET

WARREN, TEXAS

"We Appreciate Your Business"

H. T. Davis, Prop.
Phone 547-3339

January Market Basket Up 95¢ Over December

AUSTIN--Jumps in prices of coffee, pork, and lettuce upped the statewide average price of the family market basket in January to \$19.27, Agriculture Commissioner John C. White has announced.

The Texas Department of Agriculture's monthly survey of 12 major cities showed San Antonio still holding

first place in the lowest prices with a total of \$18.37 but even Alamo City shoppers faced a \$1.43 boost from December's tally. This increase was the largest of the cities checked.

The overall increase averaged 95 cents for January, White said.

The story of coffee prices is an old one, with the average price per pound in Texas moving up 59 cents to \$2.92 a pound.

Pork prices were up 9 cents for chops to \$1.25 a pound average. Bacon moved up 12 cents to \$1.22 a pound.

"Sales reports at the auctions show that prices should come down on pork by mid-February," White stated. "Producer prices are about 10 cents lower, and the decrease should be reflected at the meat counter next month."

Lettuce averaged 52 cents a head, contrasted to December's price of 44 cents.

"Cold temperatures could have an impact on supply in isolated markets, but the meteor growing areas in Arizona and California have not had severe weather, and supplies are running about normal," White commented. "Handlers may be testing the market because some chains are running sales on lettuce at 3 for \$1.00."

"Consumers should do a lot of shopping around to get the best prices."

Chicken Recipe Worth \$10,000

AUSTIN--That chicken resting in your freezer could be worth \$10,000.

That's the first prize in the National Chicken Cooking Contest, to be held in Jackson, Mississippi, on July 27. Agriculture Commissioner John C. White has announced.

Four other cash prizes will be awarded in the amounts of \$4,000, \$3,000, \$2,000 and \$1,000, in addition to an all-expense paid trip to the national contest, White said.

Texas residents may enter the contest by sending a recipe using a broiler-fryer (2 to 3 1/2 pounds) by March 1, 1977, to the National Chicken Cooking Contest, P.O. Box 28158, Central Station, Washington, D.C.

Plans for HOMEOWNERS

TIRES TO HELP YOU!
Home Renovating May Perk Up Mental Outlook



Like the proverbial purchase of new clothing to perk up flagging spirits, installation of new wall paneling may brighten up not only the home but also the individual's outlook on life.

Psychiatrists say that part of the uplift for do-it-yourselfers may come from the actual physical work.

And for both men and women, the act of the perking up of the spirits may come from the actual selection of materials, colors and patterns, they say. In essence, the remodeled room becomes an extension of the individual's personality.

This is the same type of effect as that obtained from careful selection of new clothes to brighten a gloomy period.

It may make little difference if the person has had any previous interior decorating experience. He or she can readily obtain help from major building materials manufacturers and distributors. For example, a current booklet from Georgia-Pacific Corp. entitled "How to make beautiful things happen with walls" tells what is needed to get started, explains how to put up paneling from beginning to end, and gives tips on decorating with color and style.

Other pieces of literature from G-P, aptly called "idea" booklets, open a wide avenue of ideas the individual may borrow or adapt, and they are available at retail building material dealers.

When the project is completed, the combination of mental activity in planning renovation or remodeling and physical activity in actually doing the work may have been just what the doctor ordered.

"An old man in love is like a flower in winter."

FINAL SUNSET

NANNETTE FOSKEY

Nannette Foskey, 65, a six-year resident of Warren, died at 8:15 p.m. Sunday, February 20, at her home after an illness. Funeral was held at 2 p.m. Tuesday at Edward's Funeral Home chapel in Woodville. Burial followed in Swearingen Cemetery near Warren.

Mrs. Foskey, a retired employee of Battlesteins Clothing Store in Houston, was a native of Georgia and lived in Houston 30 years before moving to Warren.

Survivors include her husband, R.M. Foskey; a son, Ralph Foreman of Warren; and two sisters, Emma Smith of San Antonio and Sarah Shrimplin of Warren.

TISHIE FORDENBERRY

Tishie Laird Fordenberry, 93, died at 7 a.m. Wednesday, February 16, at Holiday Pine Lodge after an illness. Funeral was held at 2 p.m. Friday, February 18, at Edward's Funeral Home chapel with burial in Colmesnell Cemetery in Colmesnell.

Mrs. Fordenberry was a native of Chester and lived in Colmesnell for 60 years.

NOAH PLATT

Noah A. Platt, 75, died at 10:30 a.m. Thursday, February 17, at St. Elizabeth Hospital of an illness.

Funeral services were held at 11 a.m. Saturday, February 19, at Woodville United Methodist Church with burial in Seaman's Cemetery near Chester under direction of Edwards Funeral Home.

Platt a lifetime resident of Tyler County was a retired employee of the Texas Forest Service after 35 years of service. Survivors include his daughter, Loy Conner of Chester; and three brothers, Ellis Platt and Fred Platt, both of Woodville, and Lester Platt of Newton; and a sister, Bertha Seamans of Woodville; and four grandchildren and nine great-grandchildren.

JOHN WHISENANT

Funeral services for John Whisenant, 65, a chipper for Bethlehem Steel Company, were held at 3 p.m. Wednesday, February 23, at the Lighthouse Pentecostal Church with burial following in Frank's Branch Cemetery under the direction of Farmer Funeral Home in Silsbee.

Whisenant, a lifetime resident of Fred, died at 5 p.m. Monday at Silsbee Doctors Hospital after an illness.

Survivors include his wife, Nelmer Whisenant; two daughters, Mary Virginia Ward of Silsbee and Linda Gale Whisenant of Fred; four brothers, Jack and Aaron Whisenant, both of Fred, and Arthur and Lee Whisenant, both of Silsbee; and four sisters, Eva Ard, Viola McGallion and Emma Eason, all of Silsbee, and Bertie Minard of Arizona; and two grandchildren.

Wet, Cold Weather Increases Cattle Losses in East Texas

AUSTIN--Larger than normal cattle deaths being reported in the eastern half of Texas are the result of Mother Nature's handiwork, according to Agriculture Commissioner John C. White.

"Wet, cold, and windy weather which has plagued the region almost uninterrupted since October is beginning to take its toll among the cattle being wintered over, White explained.

Watch This Space... For A New Business Advertising! DUBHAM WILL RETURN.

SOUTHEAST TEXAS SAVINGS AND LOAN ASSOCIATION

283-3747
106 W. BLUFF

Richard's Welding And Cutting

On the Job - day or night
Also: Trailer House Moved

Phones: 283-2810 283-2177 283-3044

CLEAN USED PAPER BACK BOOKS

Office Supply Center

Full Line of Office Supplies
We Stock What You Use

Highway 69 at 287
Woodville, Texas
Phone 283-6164

Big Mama and Big Daddy invite you to visit

Big Mama's CAFE

AND RECREATION CENTER

Across from school Spurger, Texas
Home Of The Famous SPURGER-BURGER

LEE AND HAP MERRITT WELCOME YOU

BUY - SELL - TRADE

ANTIQUES, JUNK, TOOLS, FURNITURE
IF IT CAN BE BOUGHT--WE BUY IT!

BURNS GENERAL MERCHANDISE

US 69 AT HILLISTER
CK & LINDA BURNS PHONE 283-564

Come and browse around--we might have it!

The Quick'n Easy Way

Sears

Service Calls, & Telephone Shopping
283-3756



Owned & Operated by Dorothy Nettles

TIEMANN Singer Sales & Service

Expert Sewing Machine Repairs

Phone 384-4270
1360 S. Wheeler

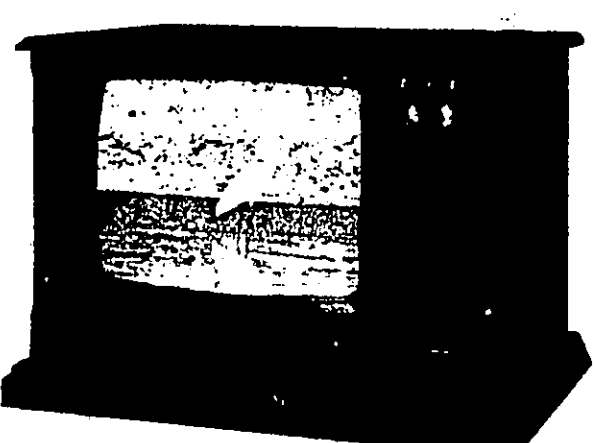
JASPE, TEXAS

after you see your doctor...



bring your prescription to

Bob's Prescription Shop
1010 W. BLUFF WOODVILLE PH 283-3073



629⁹⁵

Available In Oak

WITH TRADE

30,000 VOLT 100% SOLID STATE MODULAR CHASSIS

Model A503
Pecan finish on durable simulated wood materials
25" diagonal Color Console
Spanish

Negative Guard Band
Picture Tube

Instant Touch Tuning
Automatic Fine Tuning
Automatic Tint Lock
Automatic Color Control
Automatic Degaussing
Automatic Gain Control
Automatic Brightness Limiter
Automatic Line & High Voltage Control
70-Position Detent UHF-Tuner
Dimensions 38" W, 19" D

WOODVILLE TV

430 South Magnolia Woodville, Texas

OUR PRAYERS ARE ALWAYS SUBJECT TO GOD'S WISDOM

Beginning with childhood, most of us have had the disturbing experience of praying for some specific object or occurrence, only to be keenly disappointed when our prayers were not answered. In the course of our lives, the repetition of such incidents can result in a gradual erosion of faith; and yet in each case the fault lies with us, because of our erroneous assumption that we always know what is best for us and therefore that our judgment is superior to that of the Almighty. On the other hand, we should not attempt to inform God of our genuine needs and problems, for He is already aware of them. At the Church of your choice you will learn that the right way to pray is to thank God for your many blessings and affirm your faith in His infinite wisdom.

When praying, don't give God instructions; just report for duty.

—Author unknown

"Likewise the Spirit also helpeth our infirmities; for we know not what we should pray for as we ought."
—Romans 8:26

THE FOLLOWING MERCHANTS URGE YOU TO GO TO CHURCH

CHILDRESS MONUMENT WORKS

MONUMENTS, MARKERS & MAUSOLEUMS OF EVERLASTING BEAUTY

MERLE CHILDRESS
BEAUMONT HWY BOX 544
(4 Miles S. of Woodville on Hwy 69)

All Orders Prepared To Go
283-5273

John's ORANGE HOUSE STEAKS BAR B.Q.

519 S. Magnolia - Woodville

BOYKIN LUMBER

Building Materials

HIGHWAY 69 SOUTH WOODVILLE
Phone 283-3731

HELP SPONSOR OUR CHURCH MESSAGE EACH WEEK ...

The cost is low and the good for our community is ten fold.

To place your ad here call 283-5332

The Woodville Star