

THE ONE WITH ALL THE GREAT FEATURES



THE HERALD

Hardin County

SERVING
HARDIN
& TYLER
COUNTIES

VOL 7 - NO. 13

WEDNESDAY, MARCH 30, 1977

15c PER COPY

COUNTY EXTENSION NOTES

Pressures Pose Greater Threat To Our Youth

Pressures today pose a greater threat to youth than at any time in recent decades, conflicting with their need to develop emotional stability, Mrs. Toy Smith, county extension agent, says.

"There are increasing technological demands, social and economic demands, and personal demands on each young individual to achieve maximal potential.

"This is the scientific age and pressure is thrust on youth to understand higher and higher levels of technology. But these scientific facts may conflict with basic family beliefs the youth learned as a child and still upholds.

"The constant push for change allows no time for meditation, thought, or for living with any established fact for a period of time. Because nothing is ever at rest, it is difficult for young people to develop a sense of stability.

"Social and economic demands necessitate more years in school—technical training, college, graduate school and post graduate school are becoming the rule rather than the exception. These pressures operate a silent, but never ending, threat to young people today.

"In a society that values people for what they can do, pressure is inevitable. Family pressures, psychological pressures, economic pressures, political pressures and peer pressures all exist for youth.

"Some pressure can increase motivation. For example, a student with a high grade in a subject will probably feel enough motivation in the face of an exam to study hard to keep his high grade. This pressure is good.

"However, there is a point in which the youngster is adversely affected and achievement levels off.

"Too much pressure can lead to stress and anxiety.

"Warning signs are clear when this occurs—parents need only observe their youngster. Has his general attitude changed—is he depressed, extremely nervous, or turning to alcohol or drugs for relief? And physical symptoms—is he wakeful and restless at night when he ordinarily slept well, does he urinate more frequently, does he twist his hair or even unravel socks? All these signs point to a youngster under too much stress.

"All of us are aware of the advantages of certain kinds of pressures and deliberately apply them. However, pressures may hurt and even destroy. When pressure continues beyond a youth's capacity, he becomes distressed.

"The dangers of going too far in applying pressure are very real in our society today. Recognizing the warning signs helps parents know when to draw the line and ease up on a young person. Best, rather than most, pressure must become the goal of all. Some pressure is appropriate, too much is devastating."

LAND GIFT EXPECTED IN BIG THICKET

The Nature Conservancy, the American Land Trust, and Temple-Eastex Inc. in a joint announcement, said that final negotiations are under way for a major 2,000 acre gift of Temple-Eastex's land in the Sandylands area of the Big Thicket. The gift is expected to be made to the Conservancy under the auspices of the trust.

Riesley R. Jones, Director of the Conservancy's Atlanta office, which has been involved in the planning for the donation said, "Although final details have not been settled, both Temple-Eastex and the Conservancy feel confident that the gift will become a reality. We expect to complete negotiations in early April, with a formal transfer at ceremonies on April 16 on the property."

The land being considered for the gift is on Village Creek about two miles west of Silsbee in Hardin County, Texas. It is scheduled to be managed by The Nature Conservancy as a nature sanctuary.

American Land Trust was established early in the Bicentennial year in an innovative two-year effort to save vital portions of the nation's diverse ecological heritage. Using the experience of The Nature Conservancy, the Trust is seeking \$200 million in donations of land or in funds to protect lands of at least one prime area in each state.

The Nature Conservancy is a private national non-profit conservation organization whose resources are devoted to the preservation of natural areas and the diversity of life they shelter. Both the Trust and the Conservancy are headquartered in Arlington, Virginia. The Conservancy and its Texas chapter have worked closely with the Big Thicket Association based in Saratoga, Texas on arrangements for the current donation.

Temple-Eastex, which is headquartered in Diboll, Texas, is the wholly owned forest products subsidiary of Time Inc.

Excellent Rating
In the world of bureaucrats, an excellent efficiency rating is something you have to have in order to get something you can never get.

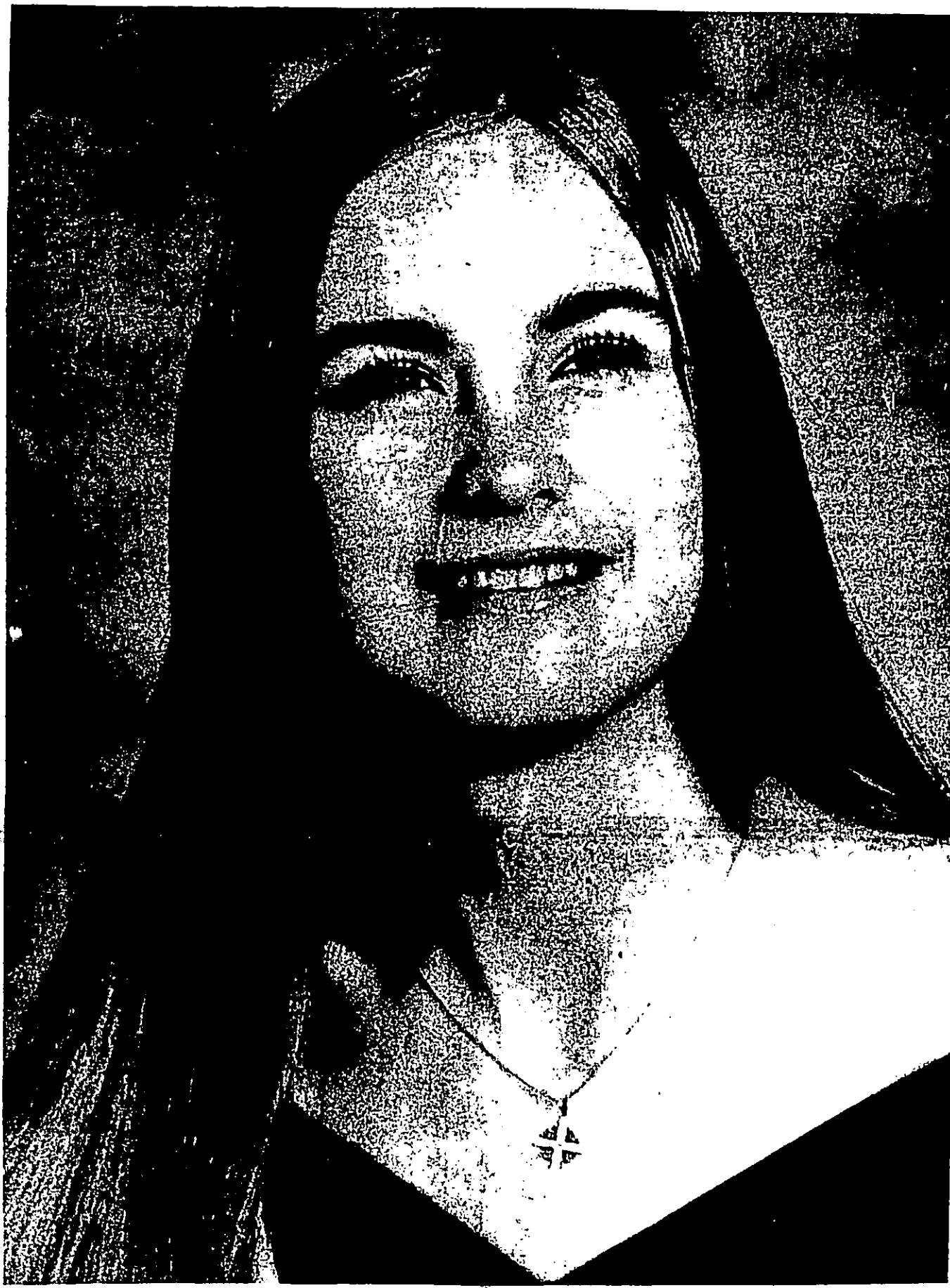
1977	APRIL							1977
S	M	T	W	T	F	S		
							1	
3	4	5	6	7	8	9		
10	11	12	13	14	15	16		
17	18	19	20	21	22	23		
24	25	26	27	28	29	30		

Newspaper fund

AUSTIN, Texas (Spl.) — Journalism is more than the world of such "biggies" as the New York Times or Washington Post.

In that regard, the former owner of a Texas weekly newspaper has set up a \$10,000 scholarship fund in The University of Texas Journalism Department for students who are interested in entering the community or weekly journalism field.

GOODWILL AMBASSADOR



MISS JANET CRUSE

THE CITY OF KOUNTZE—will be represented at the 1977 Tyler County Dogwood Festival at Woodville on April 3rd by Miss Janet Cruse. She is the daughter of Mr. and Mrs. Dean Cruse. Her selection as the Duchess in the big annual event was announced this week by Festival officials in Woodville. Her escort will be Charles Loftin, Jr., son of Mr. and Mrs. Charles Loftin. Janet is a senior; a member of the National Honor Society and has been a twirler with the band for four years. She will also represent Kountze in the Neches River Festival on April 21.

Lumberton Lions Club To Sponsor Western Weekend April 21-24

The 1977 Western Weekend, an annual event sponsored by the Lumberton Lions Club, is scheduled for Thursday through Sunday, April 21 to 24.

This year the event will have a new addition, in the form of a three-day open rodeo, which will be held Thursday through Saturday, April 21 through 23, at the Lumberton Lions Club arena.

The rodeo will be open to any interested participants. Another of the weekend's activities will be a parade, which will also be open to anyone interested. The parade is scheduled to be held Saturday, April 23, at 10 a.m. Individuals or groups interested in participating in the parade must register with the club before the parade date. Registration may be completed by calling 755-1436.

A street-dance in the Market Basket parking lot in Lumberton will be another of the weekend's festivities. It will be held Saturday, April 23, at 9 p.m.

On Sunday, April 24, the final activity of the weekend will be a day-long open horse show, which will also be held in the Lions Club arena. This activity will also be open to any interested participants.

A COMPLETE PROGRAM OF THE OPEN, RODEO AND HORSE SHOW APPEARS ELSEWHERE IN THIS EDITION OF THE HERALD

Vitamin Loss
Nutrients such as the vitamin C and the B vitamins are water soluble. This means these nutrients may get washed out when boiled in water. Thus, the longer you cook them, the greater the chance of vitamin loss.

Courthouse Squares



CIVIL CASES LISTED FOR APRIL START

Following are the Civil Cases—Docket Call for Hardin County District Court, beginning April 1, 1977, at 10:00 a.m. This is for the weeks of April 25, May 23, June 20 (non-jury) and June 27, 1977:

- E. A. Whisenant vs. Erik Lundvall.
- Mamie M. Taylor vs. Jack Darden.
- Jerry Don McRoberts vs. Otis Bruce McConnell.
- Isaac Busby, et ux vs. Sidney Holmes.
- Vernora R. Hampton vs. R. C. William, et.
- Dorris Miller vs. Missouri Pacific R.R. Co.
- James McCullough vs. George Robinson.
- Mark IV Mobile Home vs. David Dignan.
- Mark David Stout vs. Bobby Leroy Taylor, Jr.
- Roy Gen Berry vs. Eddie Frank Smith.
- James Fowler vs. Pace Funeral Home, et al.
- Robert L. Paret, Jr. vs. William D. Busby.
- Hartford Accident & Ind. Co. vs. Horace Wayne Brown.
- Kathleen C. Hollister, et al vs. Emmett Lack, et al.
- Willie A. Simank vs. Ruffin Walker.
- Central Broadcasting Corp. vs. David Dignan.
- Mrs. Ollie Coudrain vs. Theodore Martin, Jr.
- Cathy Lynn Curlee vs. State Farm Mutual Auto. Ins.
- George Robinson vs. Hollico, Inc., et al.
- David C. Sims, et al vs. Southern Pacific Transp. Co.
- Carol Mounier, et al vs. Philip Straub.
- Laverne DeBretagne, et al vs. Sherry Farr.
- Kansas City Fire & Marine Ins. vs. Earl Shaver.
- Metropolitan Life Ins. Co. vs. Eulalia E. Roberts, et al.
- John L. Fannett vs. Texas Farm Products Co.
- Roy L. Alexander vs. Liberty Mutual Ins. Co.
- Evelyn Musick, et al vs. Sherry Farr.
- Grace Faye Walton vs. Herman Leon Rasberry.
- Richard R. Ryherd, et ux vs. Johnnie Williams.
- Floyd Michael Adams vs. Billy Bob Charlton.
- Harold Holland, et ux vs. Simmons Motor Co., et al.
- Carl H. "Bo" Tarver vs. Atchison, Topeka & Santa Fe.
- Agnes Ezernack vs. Alfred Tate.
- Douglas Russell, et al vs. Charles T. Richardson.
- Jane Saxton vs. Recreation World, Inc.
- Gladys Cunningham vs. Texas Employers Ins. Assn.
- Florence Julia Barber vs. Golden Triangle Oil Co.
- C. C. Ricks, et ux vs. Mark Lee.
- Louis Jordan vs. Zurich Insurance Co.
- In Re Sarah Frances Paine, Dec.
- Karen Gillespie vs. Gary Frazier.
- Linda Broussard vs. Tina Unruh.
- Gerald Corley vs. Apache Lumber Co.
- William A. Laird, et ux vs. Motors Ins. Corp., et al.
- Wayne Darrell Sumrall vs. James Puckett.
- Bulah Dosssett vs. Paul E. Quintana.
- Recreation World, Inc. vs. Bobby R. Meynig.
- Paul D. Brown vs. Leola Riggans, et al.
- T. J. West, et al vs. Carolyn Kiker.
- National Mortgage Corp. vs. Candido Santos, Jr., et al.
- Jimmy T. Woods vs. Atchison, Topeka & Santa Fe.
- Carter Work vs. Twin City Fire Ins. Co.
- Texas Employers Ins. Assn. vs. Martin Brown, Jr.
- Lorena Kaspar, et al vs. American Economy Ins. Co.
- Daisy Samuel vs. Gulf States Utilities.
- Happi Hollowassi Barnes vs. Exxon Company, U.S.A., et al.
- Ralph Eugene Womack, et al vs. Travelers Ins. Co.
- Tommy G. Copeland, et al vs. Randell Dean Brim, et al.
- C & D Marne, Inc. et al vs. Marine Products Group.
- Emma Louise Merritt vs. Mutual of Omaha Ins. Co.
- Romie Grace vs. Liberty Mutual Ins. Co.
- Charlie W. Thomason vs. R.S. Farmer Funeral Home.
- Arthur Robinson, et ux vs. Cecil Fred Harlan.
- Judy Franklin, et vir vs. Robert G. Latiolais, et al.
- Nora L. Herrington, et ux vs. City of Silsbee, Texas.
- Laverne J. Alexander, et vir vs. Myron Grant O'Neill.
- Shelton Oil Corp vs. W. D. Smith.
- Clyde E. Smith, Jr., Judge Presiding, Aline Harper, District Clerk; Billy E. Paine, Sheriff; Ricky Thompson, Court Reporter Geo Kirkpatrick, Jr., District Attorney, Bo Horka, County Attorney.

Commissioners receive audit

KOUNTZE — An annual audit report on the financial condition of Hardin County was presented county commissioners at a meeting Monday morning — the first such report to be reviewed by an outside accounting firm since 1968.

In a letter accompanying the audit, accountants William Key and John Epps said the financial report of Auditor Horace Moyer presents a fair picture of the county's funds and fund use.

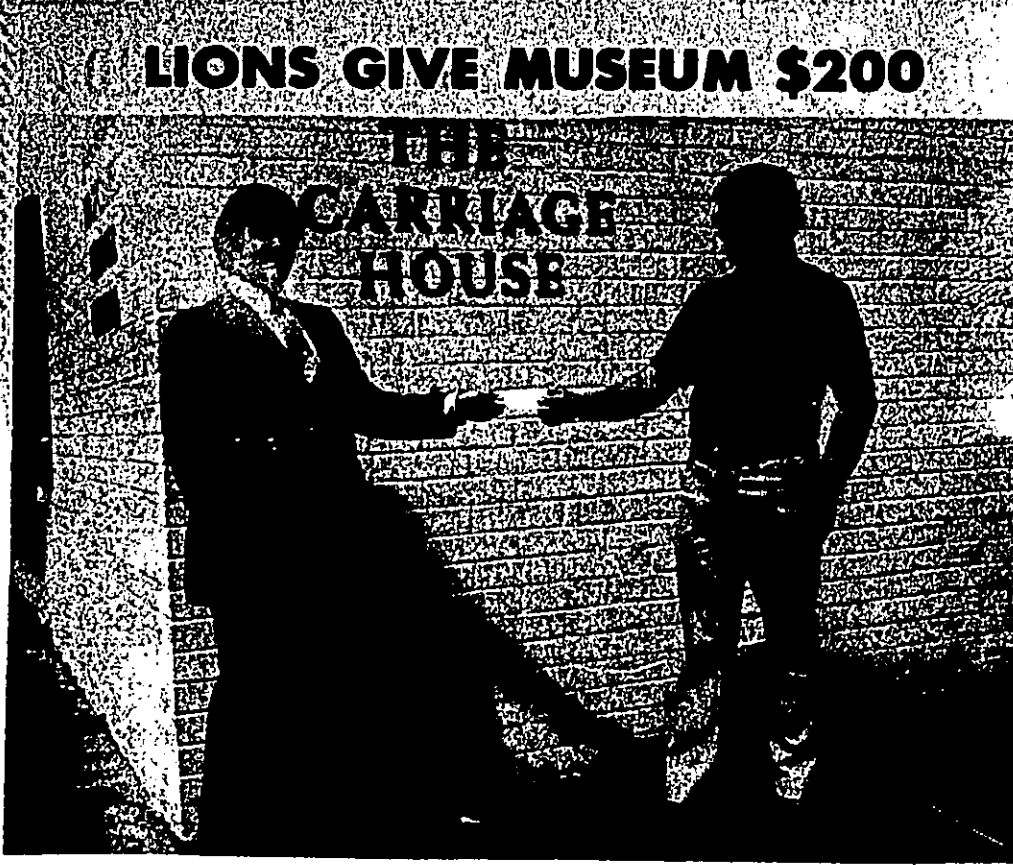
Moyer said the work was done to conform with standards set by the National Municipal Finance Officers Association of the United States and Canada in an attempt to have the county auditing department certified. Copies of the audit for 1976 already have been sent to the Chicago office, he said.

The major difficulty in preparing the audit, Moyer said, was listing fixed assets — land, buildings, improvements, property and equipment — which had not previously been compiled. Although some of the values attached to items such as chairs were guesses, Moyer said, the important thing is to have an inventory of assets.

Overall, Moyer said, the county took in \$100,000 more than expected and spent \$48,000 less in 1976.

YOUR VOTE COUNTS - REGISTER YOUR CHOICE APRIL 2

M
A
R
3
0
7
7



LIONS GIVE MUSEUM \$200
KICKOFF FOR FUND RAISING—Bob Simpson, Lions Club member hands Elton Spivey, club president, a check for \$200 as a gift from the Kountze Lions Club to the Big Thicket Museum. This initiates the kickoff for the fund raising in Kountze and surrounding areas. Mr. Spivey is a member of the museum's finance committee. Mr. Simpson is vice president of the Kountze Chamber of Commerce.

Lions clip Orangefield
 KOUNTZE — The Kountze Lions Club, entertaining the Orangefield Robots in the District 18-24 opener for both teams, slipped by the Cats 10 Monday on a fifth-inning single by shortstop, Randy Weyer.
 Weyer's single placed first baseman John Hatten and second baseman Tom Smith on base with one out in the inning. Weyer's shot to left field was one of the six hits collected by Kountze.
 The Robots could manage but five hits off Kountze starter, Otha Brown, now 1-0 in district play and 2-1 for the season. Kountze will host to the Buns Cougars Thursday.
 KOUNTZE ORANGEFIELDS
 MON THRU SAT 8:00 PM - 11:15 PM
 SUNDAY 12:00 PM - 1:15 PM
 KOUNTZE AND SIBSBE, SHOW AND LEARN - MONDAY, MARCH 11, 1977, 7:00 PM - 9:00 PM

LUMBERTON LIONS CLUB WESTERN WEEKEND
Open Rodeo and Open Horse Show

- Open Rodeo**
- Thursday, Friday, Saturday nights - starts 8:00 p.m. Full Schedule of Rodeo events including calf scramble for the youngsters.
 - Gate Entry: Adults \$2.00, Ages 6-12 \$1.00, Under 6 Free
 - Street Dance
- Performance Classes**
1. Pee Wee Western Pleasure
 2. Jr. Western Pleasure
 3. Sr. Western Pleasure
 4. Jr. Reining
 5. Sr. Reining
 6. Pee Wee Pole Bending
 7. Jr. Pole Bending
 8. Sr. Pole Bending
 9. Pee Wee Flag Race
 10. Jr. Flag Race
 11. Sr. Flag Race
 12. Pee Wee Barrel Race
 13. Jr. Barrel Race
 14. Sr. Barrel Race
- Halter Classes**
1. 1977 Foals
 2. 1976 Stallions
 3. 1975 Stallions
 4. 1974 Stallions
 5. 1973 Stallions and Before Grand & Reserve Stallions
 6. 1976 Mares
 7. 1975 Mares
 8. 1974 Mares
 9. 1973 Mares and Before Grand & Reserve Mares
 10. Geldings 4 Years & Under
 11. Geldings 3 Years & Over Grand & Reserve Geldings
- Community Parade**
- Saturday, April 23, 9:00 a.m., all civic groups are combining to provide Lumberton with its fourth annual parade. The parade will present the Western theme and will have something of interest for everyone. The parade will start at the "Y" and go north on Highway 96 to Raider Lane and the Lions Club Area. Everyone in the parade should assemble on the Old Highway just north of the "Y" at 9:00 a.m.
- All Trophy Open Horse Show**
- Sunday, April 24, 9:00 a.m. Entry Fee - \$3.00 per class. Gate Entry - \$5.00 per person - under 6, Free. Lumberton Lions Club Arena. Judge - Doug Campbell, Jr.
- All-Around Trophies for Each Age Group.** Saddle given for High Point; Saddle Blanket for runner-up. Age Groups will be: (Pee Wee 12 and under) (Jr. 13 through 17) (Sr. 18 and over)
- Concession (On Grounds For Your Convenience)**
 BAR-B-QUE Chicken or Beef Plates, and Hamburgers • Cold Drinks

68 Employees Honored By Kirby Lumber

Sixty-eight employees of Kirby Lumber Corp. who company president Tom Orli says "have made this organization work" were honored recently for their continuous service.
 The group, which accounts for over 2,000 years of service, received special awards during a banquet held on February 18 at the Ridgewood Motor Hotel in Beaumont. Each year presents a watch by Orli, himself an employee of the company for 26 years.
 Four were honored for 40 or more years of service. They are Watson S. Frick of Houston and Leroy Simmons, Frank Garrett and Charlie M. Maze of Silsbee.
 Thirty employees with 30 or more years of service included Andrew Richardson, Bert D. Griffin, Willie Alfred, J.C. Perkins, Allen F. Kinard, George Powell, Carl T. Parramore, A.C. Davenport, E.R. Graham, Morgan, Charlie Renfro, Vernon W. Smith, Charles T. Sheffield, Solomon E. Milstead, Ezra Smith, Clavin D. Foster, Jimmie Dennis, Corman E. Gilder, Woodrow W. Brown, Verdian Davis and Noble Smith of Silsbee; Lawrence N. Gill, Meredith Smith, Jr., Joseph E. Ray and Tom Dixon of Baytown; Robert Williams, Eugene Moddon and Wilbur W. Holmes of Kountze; Doris Varner of Kirbyville and Henry E. Ebarb of Newton.
 Thirty-four employees had 25 or more years of service including Clemmon L. Jones, Dan Hare, Henry Commo, Pleze Hooks, James C. Perkins, Samuel Moffett, Herman Jeffcoat, Edgar Brubaker, Otho O. Laney, Britton Simmons, Vernon Matlock and W. R. McDonald of Silsbee; R.A. Parker, Albert Parker, Wesley Carey, Alvin Erwin, Earl Johnson and Lonzo Gatson of Kountze; Pierce F. Krouse and John Cain of Kirbyville; Rhoda Curtis, Thomas M. Orli and George Stanley of Houston; J.B. Samuel and J.W. McCully of Call; Sam Samuel of Bama; William H. Newlin of Jasper; Ollie J. Haynes of Kountze; Watson Collins of Rye; Fred Unsworth of Dayton; Joseph Bailey of Vidor; Elmer O. Hill of Woodville and Ruby P. Moore of Warren.

Lighter cars
 AUSTIN, Texas (Spl.) — Good and bad things will happen in cars as lighter, University of Texas researchers have found.
 In a study made by a team from UT Austin's Graduate School of Business, it was discovered that if the weight of U.S. cars were limited to 2,500 pounds, less energy would be used to make and run cars, and fewer scarce resources would be exhausted to make steel and aluminum, and pollutants resulting from the car-manufacturing process would be reduced.

Hospital Cited By State Unit
 Hardin Memorial Hospital in Kountze, Texas has received a Certificate of Recognition from the Texas Hospital Association's Statewide Hospital Productivity Center, commending its participation in cost containment efforts.
 O. Ray Hurst, President, Texas Hospital Association (THA) said, "Texas hospitals have long been aware of the escalating health care costs and the public's questioning of financial accountability. Their past favorable reaction to this problem is indicated by the fact that Texas hospitals' costs consistently have been below national average. Costs per hospital day is currently over 13 percent higher nationally than in Texas in spite of this accomplishment, Texas hospital leadership banded together in 1975 to form the Statewide Hospital Productivity Center which is dedicated to effecting immediate and continuing savings in individual hospitals. To date, substantial cost savings have been demonstrated. Reduction in costs to date amount to more than \$20 million."
 In issuing the Certificate of Recognition Hardin Memorial Hospital was praised by Hurst for its efforts to contain health care costs, improve the overall productivity of the hospital system in Texas, and maintain high quality community health care. Administrator, Louis Kuntz and his staff were recognized for attaining high productivity goals.
 THA, based in Austin, is the trade association of hospitals in Texas with a membership of over 690 health care institutions.

CONSUMER GUIDELINES

Candles can be made to last longer and burn without smoking or dripping by coating them — all but the wicks — with soap. Let them dry in candleholders before lighting.

Editor's Quote Book

Without true Christian principles, conservatism is a political philosophy of selfishness and liberalism is one of greed.

Thomas C. Jeffery

Adams finds clip to prove Bingo point

AUSTIN — Sen. Don Adams Monday stalked the Senate floor flashing a newspaper clipping which described a recent fatal shooting at a church bingo game in Austin.
 Adams was the leading foe of the infamous "Bingo Bill" which the Senate has adopted and is now in a House committee. The legislation would permit or legalize bingo games for certain charities and non-profit groups.
 The East Texas seemed to linger particularly long at the desk of Sens. John Traeger, Frank Lombardino and A.H. "Bebe" Schwartz, three fellow-innovators who played an important role in the successful Senate treatment of the bill.
 During his long arguments on the floor against the bingo legislation Adams constantly pointed out that he believed legislation of bingo games would lead to serious crime waves and the eventual involvement of organized crime in the state.
 Adams' clip to prove his point was a photograph of a man in a suit, identified as a member of the Texas State Police, who had been arrested in connection with a bingo game in Austin.

KOUNTZE AUTOMOTIVE SUPPLY
 • AUTO • TRUCK • TRACTOR

246-2510

EMERGENCY NIGHT CALL 246-2327

LARGE SELECTION HIGH PERFORMANCE RACING EQUIPMENT

"See Us First - We Have It"

MON THRU SAT 8:00 AM - 6 PM
 SUN 10 AM - 5 PM

OWNED & OPERATED DALE WILLIFORD

IN LUMBERTON CALL 755-1394

NATIONALLY KNOWN BRANDS

LUMBERTON AUTOMOTIVE SUPPLY
 HWY 96

THE SALE TOO BIG TO MISS

\$100 OFF REG. PRICE SAVE ELECTRONIC MACHINE

It has a pre-programmed memory bank that controls and changes 25 stitches by touching buttons. It measures your button and makes a buttonhole to fit, all in one step. You get the Singer's exclusive push-button front drop-in bobbin and a Zip-Loc 5-way sewing surface for hard-to-reach places, too. Cabinet or carrying case extra.

\$199.95 SAVE \$65 ON THIS STYLISH FREE ARM MACHINE

Sews in hard-to-reach places. Has four stretch stitches for knit and stretch fabrics, and a built-in buttonholer, too. Model 534.

\$88.00 NOW ONLY ON THE FASHION MATE ZIG-ZAG MACHINE

It has a wide assortment of stitches, including an elastic stretch stitch, a built-in buttonholer and our front drop-in bobbin. Model 360/709.

SINGER CAIN SEWING CENTER
 285 Highway 96, South Silsbee, Texas

LIONS SELL HOUSEHOLD ITEMS

KOUNTZE LIONS CLUB ANNUAL SALE

"GOOD NEWS TEXAS"
 March 27 - April 3
First Baptist Church OF KOUNTZE
DR. JAMES COOPER
 EVANGELIST
 BROTHER CURTIS BRYAN, Song Leader
 10 am - 7:30 pm

AIMING FOR A CLEAN SWEEP—The Kountze Lions Club would like to sell a lot of household items during their big sale. Pictured above is John Crissman who is attending the sale of useful items around the home. Everyone is invited to shop with the Lions across the street from the Carriage House on Highway 69.

Penny-Saving Recipes

HEARTY SANDWICHES CAN BE A MAIN DISH.

Sandwiches are as old as bread and cheese. The Romans, Danes, Saxons and Normans must have eaten them long before the Earl of Sandwich made them famous.
 Today sandwiches are among the most compact and convenient forms of nourishment. When they're composed of stretched bread and high protein fillings, they are a meal by themselves. In fact, hearty main-dish sandwiches served with soup or a salad are a refreshing change of pace for dinner.
 Suggested here are Baked Fried Beef Sandwiches, hot and hearty with their chipotle beef and sharp Cheddar cheese filling, mustard sauce topping. They're an economical and satisfying main dish and may be accompanied by cole slaw or vegetable soup to complete the meal.
 For sandwiches get your types: Blue Bonnet Margarine, a long way for spreading economy. With its fresh-tasting buttery goodness and smooth, easy-spreading texture, Blue Bonnet is the penny-wise, flavor-conscious homemaker's first choice for spreading, baking, frying, frosting, sauces and other cooking applications.

BAKED FRIZZLED BEEF SANDWICHES

1 jar (8-ounce) dried chipotle beef
 Boiling water
 4 slices white bread, coated
 1 cup shredded sharp Cheddar cheese
 5 tablespoons Blue Bonnet Margarine
 2 tablespoons finely chopped onion

1 tablespoon finely dried pimiento
 3 tablespoons flour
 3/4 teaspoon salt
 Generous dash white pepper
 1/4 teaspoon dry mustard
 2 cups milk
 Chopped parsley
 Place dried beef in a large bowl. Cover with boiling water. Soak while preparing remaining ingredients.
 Place loaf's slices in a 9-inch square baking dish; top with shredded cheese. Cover with sauce.
 Melt 2 tablespoons Blue Bonnet Margarine in a large saucepan. Add onion and sauce, stirring, until tender (about 5 minutes). Drain chopped parsley. Make 4 sandwiches.

FRIZZLED BEEF SANDWICHES

Mixture: Brown 1/2 cup pimiento in 1/2 cup oil. Divide mixture evenly among sandwiches, covering cheese and spreading to edges.
 In same saucepan, melt remaining 3 tablespoons Blue Bonnet Margarine, covering cheese and spreading to edges.
 Bake in a moderate oven (375° F.) for 20 to 25 minutes. Remove from heat; grately stir in milk. Cook over medium-high heat, stirring constantly until mixture comes to a boil. Pour sauce over frizzled beef.
 Bake in a moderate oven (375° F.) for 20 to 25 minutes. Remove from heat; grately stir in milk. Cook over medium-high heat, stirring constantly until mixture comes to a boil. Pour sauce over frizzled beef.
 Bake in a moderate oven (375° F.) for 20 to 25 minutes. Remove from heat; grately stir in milk. Cook over medium-high heat, stirring constantly until mixture comes to a boil. Pour sauce over frizzled beef.

Auto Service Tips

TO PREVENT EXCESSIVE WEAR FROM FINDING ITS WAY TO THE GASLINE, USE HEAT INSULATORS BETWEEN THE INTAKE MANIFOLD AND THE CARBURETOR. THEY ARE AVAILABLE AT MOST SHOPS, OR YOU CAN MAKE YOUR OWN FROM DOUBLE-THERMED MAGNETITE. BE SURE TO USE A GASKET ABOVE AND BELOW EACH INSULATOR.

Legal Notice

Invitation For Bids

Southeast Texas Savings and Loan Association 6784 Woodville, Texas will receive bids for construction of Branch Office at Kountze, Texas. (Including site improvements and utility work) until 10:00 a.m. on the 11th day of April, 1977, at the home office of the Association, 6784 Woodville, Texas. Plans and specifications may be obtained by depositing \$50 with the Architect-Engine Project Manager, Services, Don R. Cole, Architect, P.O. Box 274, Woodville, Texas 75799 for each set of documents to be returned to each person who returns plans, specifications and other documents in good condition within 15 days of bid opening. A certified check or bank draft, payable to STS or a satisfactory letter of credit, must accompany the bid. The bid shall be returned to the office of the Architect-Engine Project Manager, Services, Don R. Cole, Architect, P.O. Box 274, Woodville, Texas 75799 for each set of documents to be returned to each person who returns plans, specifications and other documents in good condition within 15 days of bid opening. A certified check or bank draft, payable to STS or a satisfactory letter of credit, must accompany the bid. The bid shall be returned to the office of the Architect-Engine Project Manager, Services, Don R. Cole, Architect, P.O. Box 274, Woodville, Texas 75799 for each set of documents to be returned to each person who returns plans, specifications and other documents in good condition within 15 days of bid opening.

20-GAME WINNER '76 Don SUTTON

WILL REGULARLY HOLD EVERY DODGERS PITCHING RECORD BEFORE HE HANGS UP HIS SPICES (WITH THE POSSIBLE EXCEPTION OF SANDY KOUFAR'S 4 NO-HITERS). SUTTON NEEDS 12 STRIKEOUTS AND 4 SHUTOUTS TO LEAD IN THOSE CATEGORIES. DON WANTS TO FINISH HIS CAREER WITH AT LEAST 20 VICTORIES. HE SEEMS TO PITCH 4 MORE YEARS.

IN 1972, HE WAS 18-9, AND HURLED 9 SHUTOUTS THAT YEAR! UNTIL THE LAST GAME OF THE SEASON, HIS E.R.A. WAS UNDER 2.00. "I'D JUST AFTER A ROCKY START, DON WENT TO A HYPNOTIST. RELAXED, HE THEN WON 11 STRAIGHT GAMES!"

VALUABLE COUPON
10% DISCOUNT ON ALL MERCHANDISE
JAYS 5 & 10
 DOWNTOWN SILSBE, TEXAS

1 Coupon Per Person March 18 thru 23rd

The Silsbee Scene

The Ardie Stevens home on Hartman Drive in Silsbee will be the scene of a "Serendipity" Thursday, March 31, from 2 until 6 p.m. according to the women of the Presbyterian Church in Silsbee. Everyone invited to bring a friend, sip a cool drink, enjoy a rib-bite and, perhaps, purchase a hand-crafted item, or a home-made goodie. Proceeds from the gala featuring Easter surprises will go to the carpet fund for the church sanctuary.

Nancy Duffie, daughter of Mr. and Mrs. Dean Duffie of Silsbee will represent Silsbee and the area, along with eleven other youth, when they leave Jefferson County Airport, April 2, for Paris, France, to attend a mini-program of the American Institute for Foreign Students. Jeanette Price, a teacher at Thomas Edison Jr. High School in Port Arthur will chaperone the group.

The Rho Upsilon Chapter of Beta Sigma Phi elected officers and completed plans for a rummage sale recently when they met at Silsbee State Bank. The fund raising is for various charity projects of the Sorority. Visitors included Mr. and Mrs. Ken Scales and Mr. and Mrs. Eugene Pattilo. Officers elected were Karen Jordan, president; Janet Hobbs, vice president; Debbie Nolan, secretary; Martha Scales, treasurer and city council representative; Phyllis Yawn, city council alternate. Committee chairpersons were also elected.

Congratulations to Cheryl Ann Pryor and David A. Jones who were married Saturday in the Silsbee Church of Christ with Dan Gibson officiating. Parents of the couple are Mr. and Mrs. Nolan L. Pryor of Silsbee and Mr. and Mrs. Jesse L. Jones of Ewald. The couple will make their home in Silsbee.

The Twentieth Century Club met in the home of Mrs. Roy Harvey recently with Mrs. E. M. Pruitt as co-hostess. Guests included Mrs. Gladys Barclay of Silsbee, Lilli Palmer's autobiography "Change Lobsters and Dance," reviewed by Mrs. R. L. Read with Mrs. E. M. Wilson, Jr. doing the commentary. Mrs. Eddie Plunk presided.

Globe-trotting Eloise Bean spent last week in Houston visiting her daughter Cheryl and attending the Rehearsal gathering at the Rice Hotel. A trip below the border to neighboring Mexico is in the offering and plans are well under way. Lucky Eloise.

WEDDING ANNOUNCED

Mr. & Mrs. Charles A. Roberts of Kountze announced the marriage of their daughter, Monica Rene to Gary Lee Smith, son of Mr. & Mrs. Dale Smith of Kountze.

The wedding was held in the home of Mr. & Mrs. D. C. Crissman in Kountze on March 12, 1977, at 7:00 p.m. Mrs. Joann Jeffcoat was matron of honor and Royce Overstreet was best man. A reception followed the wedding.

The couple are making their home in Kountze where both are seniors at Kountze High School. Mr. Smith is employed part-time at Williams Center in Kountze and Mrs. Smith is employed part-time at Kountze Nursing Center in Kountze.

A double dawning

The Robert E. (Bobby) Snyder family welcomed the arrival of their sons on March 12, 1977. The two boys were named Brian Neil and Joseph Michael Snyder.

The great-grandparents are Ms. Maria Jenico of Briscoe, Pennsylvania and Susie Overstreet of Kountze. Their great-grandparents are Ms. Fanny Snyder of Beaumont and Bessie Lee and Cecil Overstreet of Kountze. The grandparents are Mr. and Mrs. Clifford Snyder of Beaumont and Ms. Rose Vonn of Sour Lake and J. L. Vay of Winnetka.

WOMEN EARN

Last year, working women earned a median income of \$6,587, compared with \$12,132 for men. Since 1962, the number of women in the labor force has tripled in this country, and the number of women physicians has increased two and a half times. Women make up 46 per cent of the U.S. labor force but hold only 18 per cent of the jobs in management.

KOUNTZE AUTOMOTIVE and LUMBERTON AUTOMOTIVE ANNIVERSARY Sale

Friday - Saturday - Sunday
 APRIL 1-2-3

FREE DOOR PRIZES
 GREEN LIGHT FENDER COVER with \$16 purchase excluding specials.

FREE TUNE UP CHART AND GAUGE with tune-up kit purchase.

WD-40
 12 ounce can \$1.69

STP OIL TREATMENT 99¢

FREE SHOCK ABSORBERS
 (Gripper or Monroe Matic)
 Buy 3 - Get 1 FREE

FREE FILTERS
 (Oil or Air)
 Get FREE Wix Cap

BUY 2 WIX

WALKER 1-TON FLOOR JACK \$98.50

STORALL PICKUP TRUCK TOOL BOX \$96.50

FREE COFFEE, COLD DRINKS and DONUTS
 FREE DECALS and STICKERS for the kiddies!
 LOADS OF DOOR PRIZES TO BE GIVEN AWAY

VALUABLE COUPON
10% DISCOUNT ON ALL MERCHANDISE
JAYS 5 & 10
 DOWNTOWN SILSBE, TEXAS

1 Coupon Per Person March 18 thru 23rd

FINAL SUNSET

You Can Receive The HERALD

Subscribe to the newspaper with a heartbeats designed to entertain and inform the people of the county and surrounding areas. Subscribe to the biggest little newspaper in the world... little in size but big in features and content. It's the "people paper" of, for and by the citizens.

FIFTY ISSUES FOR ONLY FIVE DOLLARS

SUBSCRIPTION SERVICE FORM

My Name _____
 Address _____
 City _____
 State _____ Zip _____

MAIL TO: P. O. Box 578, Kountze, Tx. 77625

VISIT OUR BULK SEED DEPARTMENT

#1 TYLER ROSE BUSHES

The most complete in this area

FERTILIZER - all kinds
INSECTICIDES

FRUIT TREES

WILLIAMS CENTER KOUNTZE, TEXAS
PHONE 246-3241

FIRST SAVINGS ASSOCIATION
 Of Southeast Texas

DAILY COMPOUNDED YIELD

SAVINGS PLAN	ANNUAL RATE	(ANNUAL BASIS)	MINIMUM BALANCE
Regular Passbook	6 1/2%	5.38%	5.00
* 90 Day Certificate	6 1/2%	5.92%	250.00
* 1 Year Certificate	6 1/2%	6.72%	1,000.00
* 2 1/2 Year Certificate	6 1/2%	6.88%	1,000.00
* 4 Year Certificate	7 1/2%	7.78%	1,000.00
* 5 Year Certificate	7 1/2%	8.06%	1,000.00

Substantial penalty for withdrawal prior to maturity

We Pay the Maximum Rates Permitted by Law
450 Hwy. 96 So. Silsbee
385-5211 or 755-1777

SINGER

SAVE \$100 ON THE ATHENA* 2000

SAVE ELECTRONIC MACHINE

It has a pre-programmed memory bank that controls and changes 25 stitches by touching buttons. It measures your button and makes a buttonhole to fit, all in one step. You get the Singer's exclusive push-button front drop-in bobbin and a Zip-Loc 5-way sewing surface for hard-to-reach places, too. Cabinet or carrying case extra.

\$199.95 SAVE \$65 ON THIS STYLISH FREE ARM MACHINE

Sews in hard-to-reach places. Has four stretch stitches for knit and stretch fabrics, and a built-in buttonholer, too. Model 534.

\$88.00 NOW ONLY ON THE FASHION MATE ZIG-ZAG MACHINE

It has a wide assortment of stitches, including an elastic stretch stitch, a built-in buttonholer and our front drop-in bobbin. Model 360/709.

SINGER CAIN SEWING CENTER
 285 Highway 96, South Silsbee, Texas

VALUABLE COUPON
10% DISCOUNT ON ALL MERCHANDISE
JAYS 5 & 10
 DOWNTOWN SILSBE, TEXAS

1 Coupon Per Person March 18 thru 23rd

THE HERALD

SERVING HARDIN AND TYLER COUNTIES

"A Friend of the People"

Published Wednesday By
STAR NEWSPAPERS



Kountze Office:
P.O. Box 578
246-2223

Woodville Office:
P.O. Box 267
283-5332

Troy Hensley... Managing Editor
Henry Williams... Associate
Emma Drake... Deputy
C. E. Meadows... Advertising Manager
Melvin Tarver... Advertising Sales
Bryan Loving... Contributor

Entered as second class matter at the Postoffice at Kountze, Texas

OPINION

OURS - YOURS - THEIRS

musings

by Emma Drake

PRUDENCE IS WISDOM PROJECTED TO FUTURE

Prudence is a conformity to the rules of reason, truth and decency. This means that in a society where such rules are held in high regard, prudence and wisdom are virtues to be praised; but in a society that knows no such rules, the prudent man earns no praise.

In 1787, Edward Gibbon, the great English historian, compiled his notable work, "The Decline and Fall of the Roman Empire." In our generation many things that once stood as firm as the Rock of Gibraltar have weakened and fallen into the sea of declining morality. The following facts account for some of the reasons the great Roman Empire fell. By our prudence and wisdom, we must not follow the same pattern and road to the graveyard of dead nations:

The rapid increase of divorce. The undermining of the dignity and sanctity of the home, which is the base of human society. It is within the family we learn almost everything we ever know of loving kindness.

Higher and higher taxes and the spending of public monies for free bread and circuses for the benefit of the populace. Somehow, I believe we will be all right. Crises always bring out the best in us.

The mad craze for pleasure. Sports becoming every year more exciting and more and more brutal.

The building of gigantic armaments, which, when completed, are obsolete, when the real enemy within, in the decadence of our people.

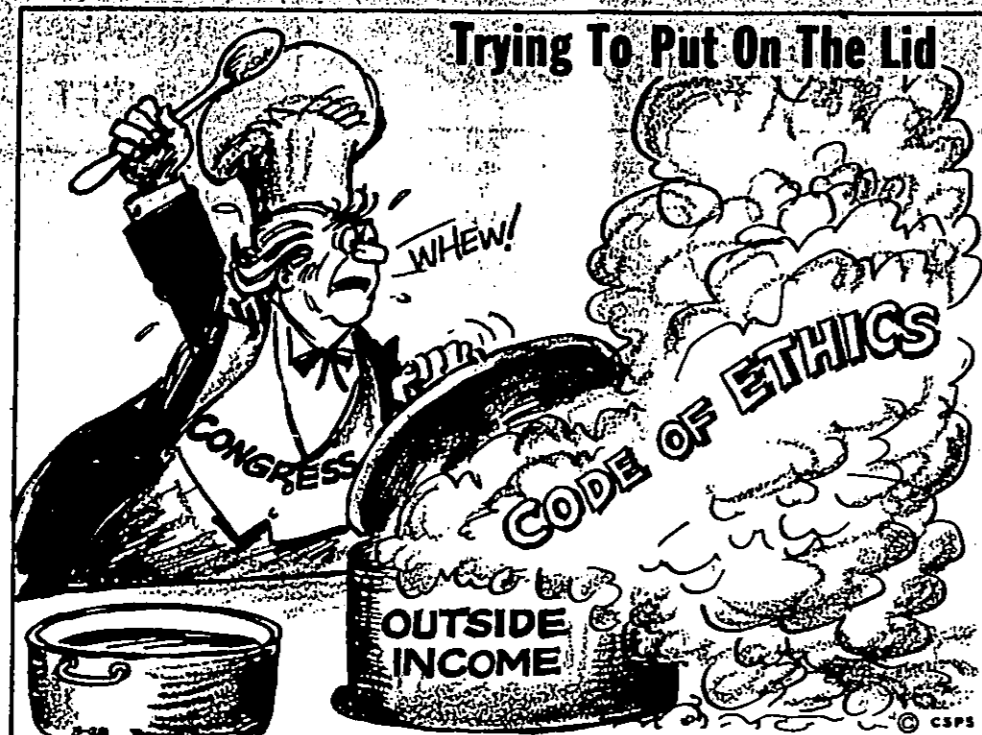
The decay of religion—faith fading into mere form, losing touch with life and becoming powerless to warn and guide the people. Christianity is not a cloak which men wear on Sunday morning and hang it up in the closet the rest of the week.

Errosion in every day life is very destructive. Unheeded by many, it not only exists, but day-by-day is undermining the foundations of our communities. Graft, delinquency, breakdown of law and order, and our lack of interest in public affairs will eventually cause our communities to decay and become ghost towns. Events in history show that when offenders are not dealt with justly, then the community's activities, such as commerce, law and government weaken and collapse. However, many of us see the need to try to remake our community at a time when it is not easy to believe that each citizen does count and their integrity does make a difference. We have become far more educated than any people in history. Yet, we are reluctant to voice our opinions and seem uncertain of what we believe in.

A certain kind of progress and its by-products has come too quick. We have become too clever for our own good. Our inventions have come home to plague us. We must rise above ourselves. We live in a time when greed, envy, misrepresentation and corruption is an accepted way of life. It is that kind of progress that has done us in.

Finally: We use them that are wise in their own eyes; and prudent in their own sight.

Isiah 5-21



\$1 Trillion By 1980

The disease of federal deficit spending

By M. STANTON EVANS

Neither pie in the sky nor the Big Rock Candy Mountain seems more remote at this point than President Carter's balanced federal budget. True, the Carter balanced-budget pledge isn't supposed to take effect until the end of his present term, which gives him until 1981 to get the situation turned around. But his initial steps since taking office have been in just the opposite direction, toward bigger deficits instead of smaller ones. And the social programs to which he is committed would swell the red ink total even further.

Carter's initial budget move was to add substantially to the projected deficits for fiscal 1977 and 1978 bequeathed to him by President Ford. The Carter revisions jacked up the spending totals by \$25.6 billion and increased the anticipated deficit by \$21.6 billion. His proposals would bring the expected deficits for '77 and '78 to \$68 billion and \$57.7 billion, respectively, and both these figures could be on the low side.

Their mammoth deficits would be the largest in American history, far exceeding those incurred in World War II, and bringing our acknowledged federal debt to better than \$750 billion. (The unacknowledged, or off-budget, debt is many times this total.) They also provide convincing evidence that the deficit disease is progressing steadily and that the desire of federal beneficiaries to revel in the handouts without the revenues to back them up.

The progressive nature of our affliction may be seen by reviewing total budget deficits incurred over the past two decades under six different Presidents. As may readily be observed in the following table, the deficits have grown appreciably larger with each succeeding President, while the time frame for incurring them has become progressively shorter.

President	Term of Office	Total Deficit
Dwight D. Eisenhower	1953-61	\$13.4 billion
John F. Kennedy	1961-63	\$12.3 billion
Lyndon B. Johnson	1963-69	\$42.0 billion
Richard M. Nixon	1969-74	\$68.7 billion
Gerald R. Ford	1974-77	\$11.6 billion
James E. Carter	1977-78	\$123.7 billion

As these data make abundantly obvious, the deficit situation in the past few years has gotten totally out of hand. In the three-year span since Gerald Ford ascended to the White House, we rolled up more by way of federal deficit than the amount incurred by Presidents

and how it can be brought to a halt

By HANS F. SENNHOLZ

American income and wealth are not produced in Washington; they are merely redistributed there by political force. The steady growth of this redistribution process in recent decades explains the growth of the federal government. During the last decade federal spending has increased some 10 per cent per year. Over the last three decades, federal, state and local government spending has soared from 20 per cent of national income to more than 40 per cent.

We must view this trend with great alarm. After all, the growth of government in our lives signifies the growth of political coercion and simultaneous loss of individual freedom. As politics is becoming a popular redistribution method, it is gradually gaining in importance until every sphere of economic life is politicized, and political action is more important than economic effort.

Economic stagnation must inevitably follow. But, above all, the political redistribution process is breeding antagonism and conflict not only between the beneficiaries, who are profiting from the redistribution, and the victims, from

whom the benefits are forcibly taken, but also among the beneficiaries themselves who are at odds about their fair and proper shares. The redistributive society is a conflict society that jeopardizes its individual freedoms and economic well-being.

When the quest for redistribution outpaces the means that are available in tax revenues, budgetary deficits are suffered. Small deficits may be covered by government borrowing of the people's savings. But the huge deficits of recent years can only be financed through some creation of money, which is inflation.

Deficit financing thus appropriates the people's monetary savings for government spending, and gradually impoverishes the American middle class. Its impoverishment is aggravating the social conflict.

In the footsteps of his New Deal and New Republican predecessors President Carter is promoting more redistributive spending in order to stimulate economic growth and alleviate the high rates of unemployment, he is proposing a stimulation package of \$31 billion over two years. President Ford's budget message of Jan. 17, 1977, forecast a 1977 deficit of \$57.2 billion. Pres-

Orange tower heralds books

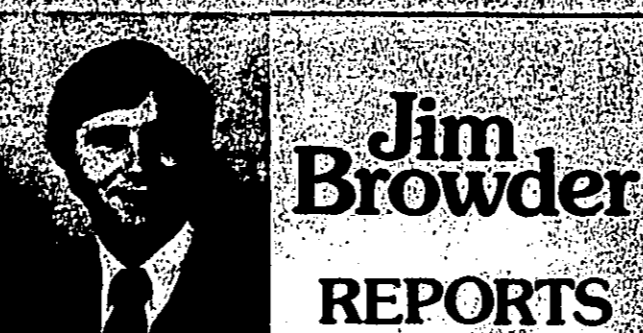
AUSTIN, Texas (Sp1)—The 307-foot Tower at The University of Texas was lit with orange one night recently, not to herald a Longhorn athletic victory but something far more significant—the addition to the UT Austin Library of its four millionth volume.

Presented by Mrs. Dolph Briscoe, the milestone book was the two-volume first edition of Noah Webster's "An American Dictionary of the English Language," printed in 1828.

UT Austin's Library is now the 10th largest academic library in the U.S. In 1984, the Library consisted of 1,200 books in one room of the Old Main Building, outside of which cows frequently grazed.

"No one can know everything," Horace

Human Events



Jim Browder REPORTS

The passage of a bill into law is a very complex process and I would like to briefly outline this process so that you might have a better idea of how a bill becomes a law and how to impact a particular piece of proposed legislation.

There are four major categories in the process of passing a bill into a law. These are: introduction, committee action, floor action and enrollment. Once the first three categories of action have been completed by one legislative chamber, the bill is sent to the other chamber where it must go through the first three categories again. The fourth category, enrollment, occurs in the chamber where the bill originated and is done after both chambers have agreed upon the final form of the proposal.

A bill can be introduced by any member of the House of Representatives. A bill that is introduced in the House will follow the procedure outlined below. Upon introduction, the bill is filed with the Chief Clerk who assigns the bill a number. The bill is read to the House by the reading clerk and then referred to a committee by the speaker. It is then sent to the printer for the first printing.

No bill can be considered by the House until after it has been reported on by the committee. Many bills die in committee because the committee never acts upon them. Other bills are given hearings and it is at this point anyone who has a particular interest in a bill can testify before the committee. Committee recommendations to the House can take any of the following forms: favorable, unfavorable, failure to recommend action, an amended bill, or a substitute measure for the original bill. Bills which receive favorable committee reports (or a favorable minority report in some cases) can be sent to the Committee on Rules for assignment to a calendar. The calendar system, which is a complex process itself, determines the order in which the bills are considered by the House.

The bill now comes to the full house for second reading which is first time that consideration is given to the bill by the full house. The House rules determine how the debate is to be conducted on the floor. After the debate, the bill and any amendments are voted on by the full House. If the bill fails to pass by a majority, it is dead unless a motion to reconsider can be successfully passed by the House, which happens only rarely. If the bill passes on this second reading, it is then sent to the office of the enrolling and engrossing clerk who has the responsibility of typing the bill in the exact form in which it was passed. The engrossed bill is then sent back to the House for third reading. At this point the House gives final consideration to the bill and votes again.

Once the bill has passed the House on third reading, it is sent to the Senate and begins the same process over again. If the Senate passes the bill in the exact same form as the House did, the bill then goes back to the House engraving and enrolling clerk. The bill is then enrolled in final form. It is this enrolled copy that is sent to the governor to be signed into law.

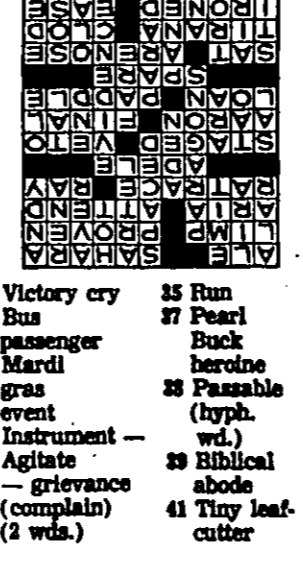
If the House and Senate do not pass the identical bill, and cannot agree on changes recommended by one Chamber, the bill then goes to a conference committee to try to work out a compromise bill. If no compromise is reached, the bill dies. Conference committee compromise bills must then be passed by a majority of each house before it can be sent for enrolling. As you can see, there are a number of critical points where a bill can be killed. It is important to understand this process in order to know where to have influence into the legislative process. My staff and I are happy to assist anyone who is interested in a particular piece of legislation. My address is P.O. Box 2910 Austin, Texas 78769 and my telephone number is 512-475-3932.

from HISTORY'S SCRAPBOOK DATES AND EVENTS FROM YESTERYEARS

- April 1—April Fool's Day, believed to have originated in France in 1564 when the reformed calendar was adopted, causing everybody.
- April 2, 1861—Negroes in Montgomery, Alabama, begin mass demonstrations demanding more civil rights and an end to segregation.
- April 3, 1898—Bruno Richard Hauptmann is electrocuted for the kidnapping and murder of Charles A. Lindbergh, Jr.
- April 4, 1882—After five years of research, Professor C.G. King of the University of Pittsburgh, isolates Vitamin C.
- April 5, 1884—Poochshante, daughter of the Indian chief Powhatan, is married in Virginia to John Rolfe, an English colonist.
- April 6, 1857—Trolley cars become a thing of the past in New York City as the few remaining trolleys complete their runs.

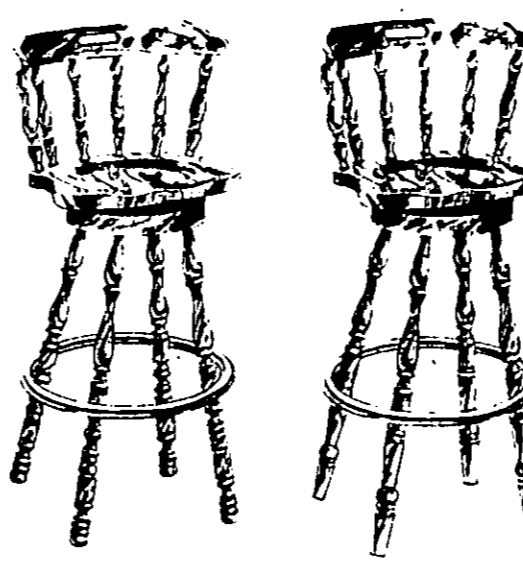
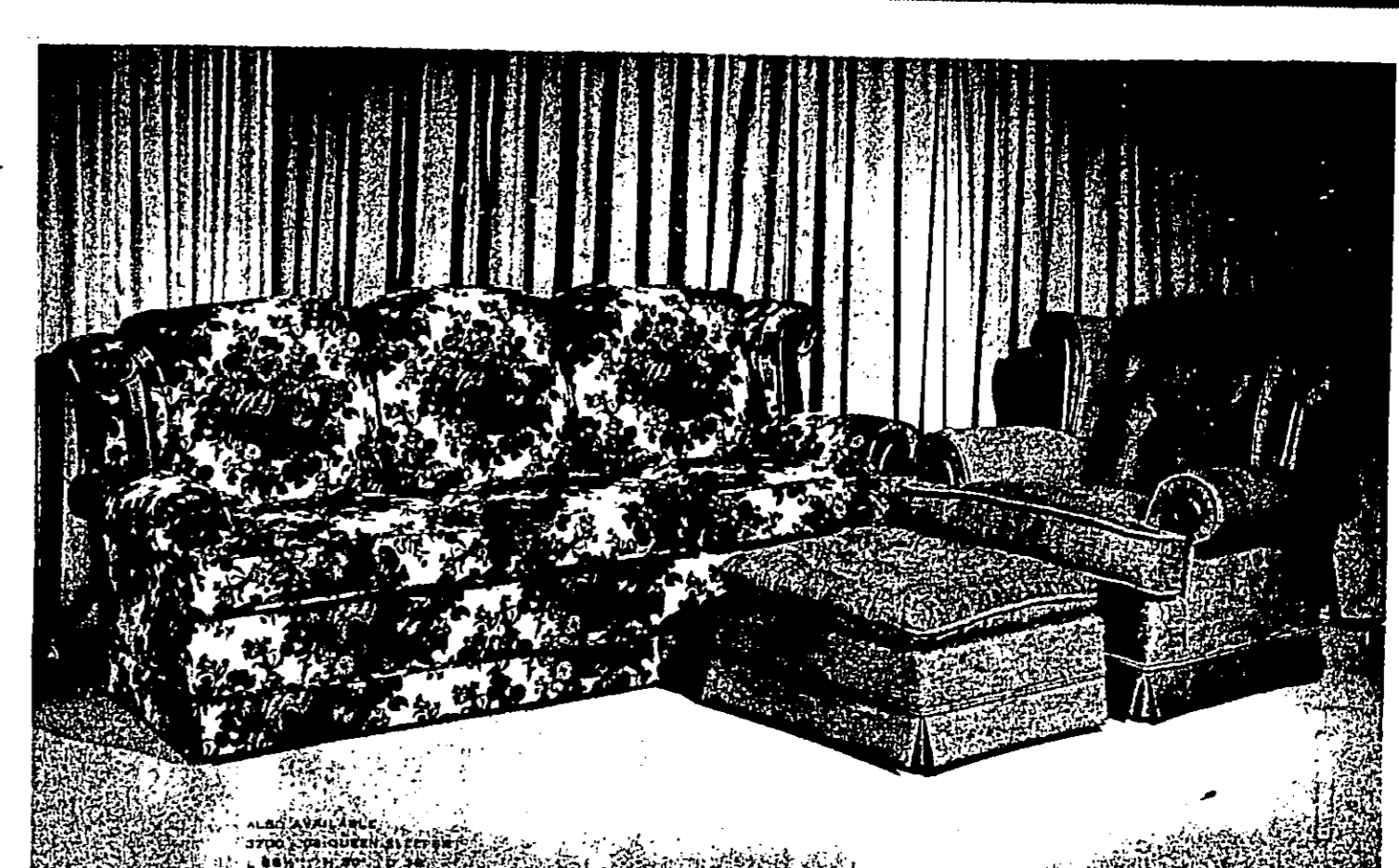
CROSSWORD PUZZLE

ACROSS
1 Kin to stout
2 Bogart film
3 Drooping
4 Verified
5 Anna Maria
6 Be present
7 Commuters' treadmill
8 Singer
9 Charles
10 Mara or Jergens
11 Prepared a drama
12 Vote down
13 "Farmers' in Hank"
14 Concluding
15 Banking service
16 Our
17 Bowling mark
18 Heated
19 Sandy
20 Albanian capital
21 Laramie
22 Did a household chore
23 Assuage
24 Baby's plaything
25 Size qua-
26 DOWN
1 Windfalls
2 110
3 osteonin
4 Set at intervals
5 Bussard's workers' union



TODAY'S ANSWER
1 KIN
2 BOGART
3 DROOPING
4 VERIFIED
5 ANNA MARIA
6 BE PRESENT
7 COMMUTERS' TREADMILL
8 SINGER
9 CHARLES
10 MARA OR JERGENS
11 PREPARED A DRAMA
12 VOTE DOWN
13 "FARMERS' IN HANK"
14 CONCLUDING
15 BANKING SERVICE
16 OUR
17 BOWLING MARK
18 HEATED
19 SANDY
20 ALBANIAN CAPITAL
21 LARAMIE
22 DID A HOUSEHOLD CHORE
23 ASSUAGE
24 BABY'S PLAYTHING
25 SIZE QUARTER
26 DOWN
1 WINDFALLS
2 110
3 OSTEONIN
4 SET AT INTERVALS
5 BUSSARD'S WORKERS' UNION

10% OFF on all THOMPSON - JOHNSTON and ROSENTHAL furniture



OFFER EXPIRES
APRIL 9

2034 Bar stool with swivel seat, contoured back and hand grip. Maple finish. 22 1/2" high.

1031 Maple finish bar stool with swivel seat, contoured back and hand grip.

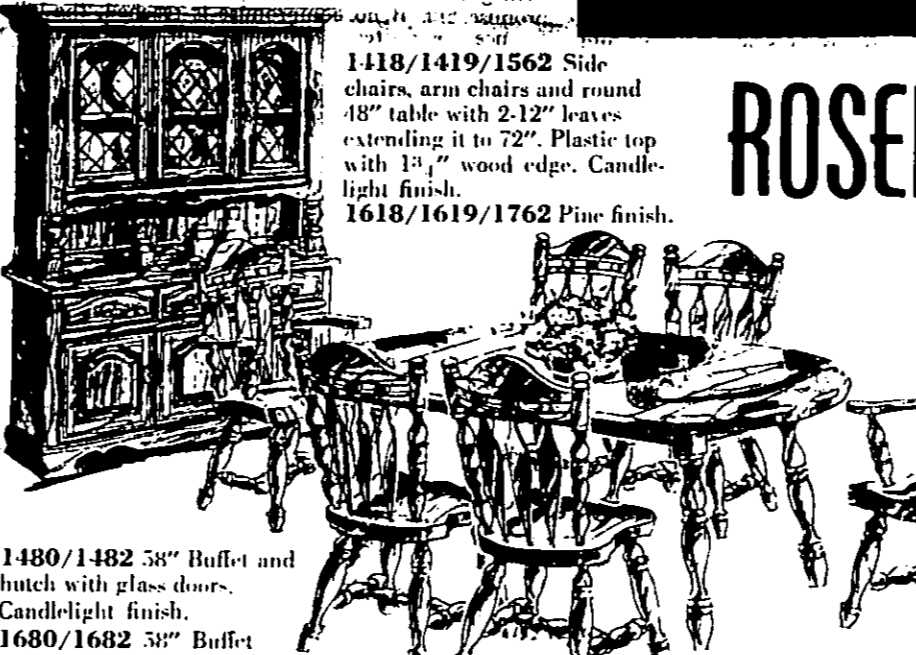


FREE TURKEY

with any purchase of \$100 or more

10 - 14 LB. AVERAGE

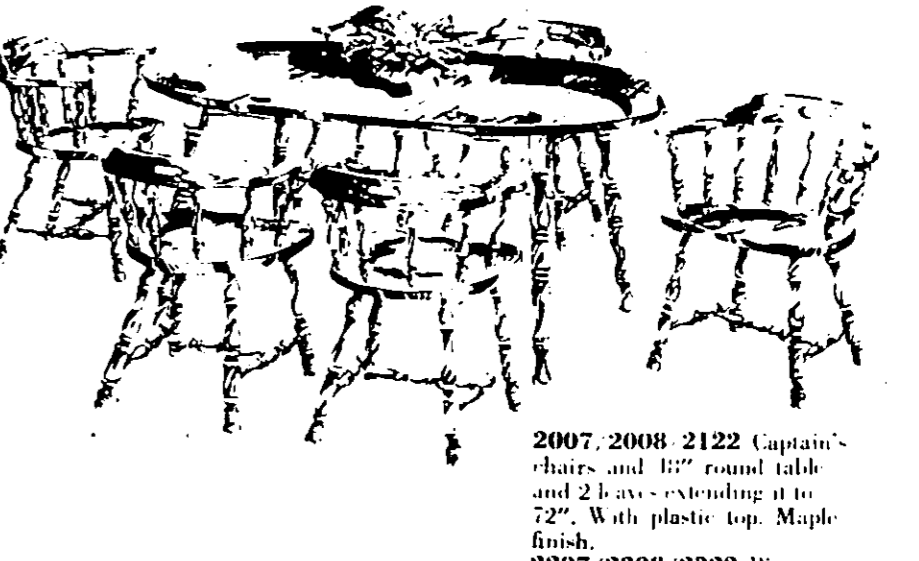
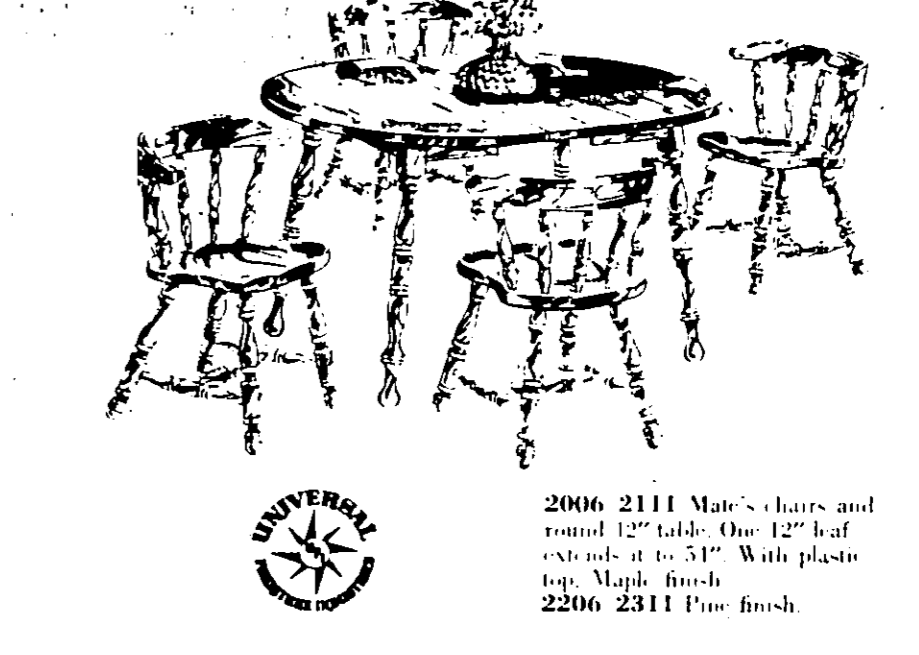
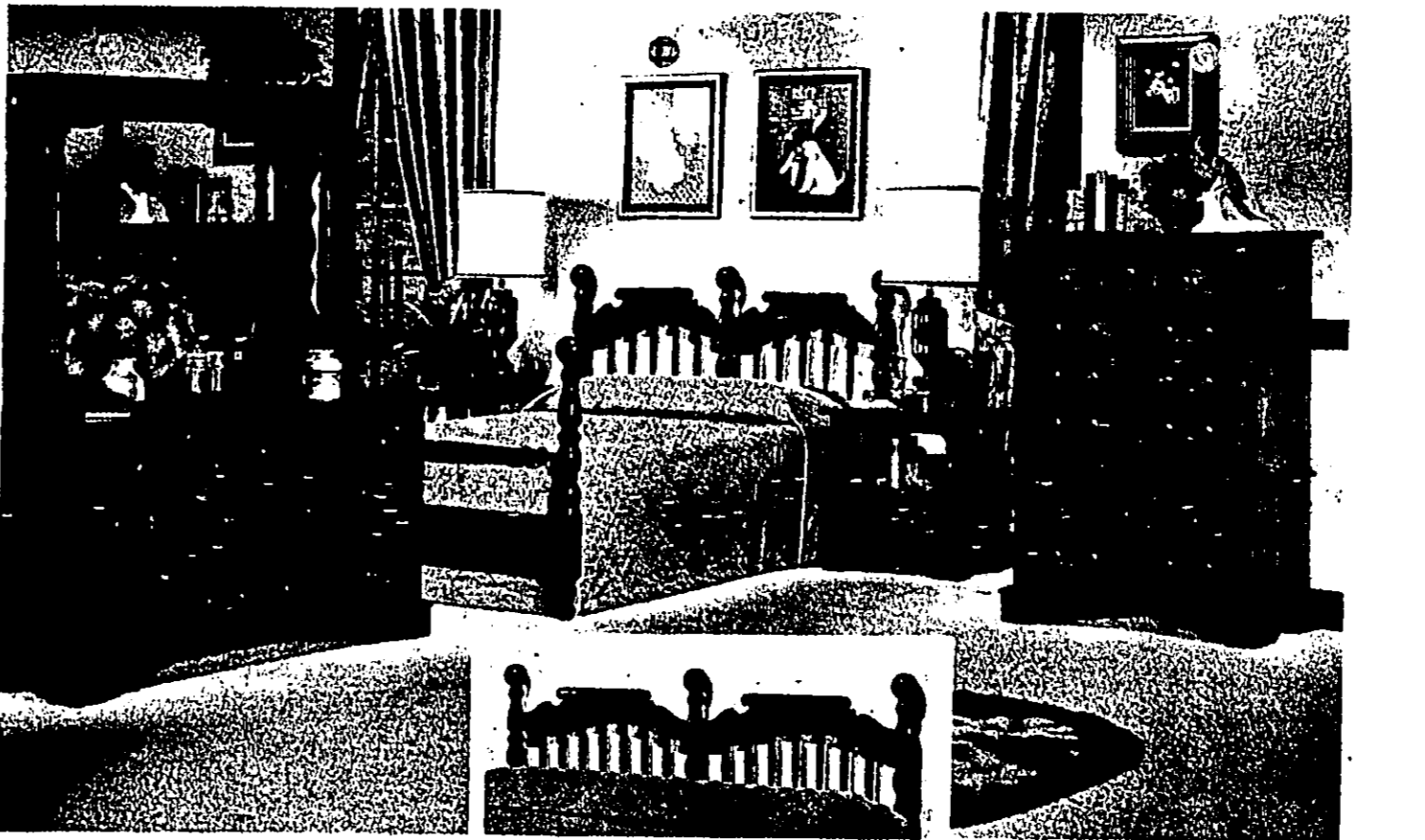
from H&H GROCERY



1480/1482 38" Buffet and hutch with glass doors. Candlelight finish. 1680/1682 38" Buffet and hutch, pine finish.

1623 Pine finish Rocker

ROSENTHAL



2006 2111 Maple chairs and round 12" table. One 12" leaf extends to 60". With plastic top. Maple finish. 2200/2208/2322 Pine finish.

STRATTON'S WESTERN AUTO

Associate Store

HIGHWAY 326 246-3254 KOUNTZE, TEXAS

H&H

GROCERY
KOUNTZE, TEXAS

We make it easier to SAVE!

FOOD STAMPS WELCOME

PRICES GOOD MARCH 30-31 APRIL 1-2

SCENTED Candles 5/\$1

RUSSETT POTATOES 5 LB. BAG **69¢**

CALIFORNIA CELERY ea. **25¢**

CALIFORNIA ORANGES 3 lb. **91¢**

GOLDEN DELICIOUS APPLES lb. **39¢**

FLORIDA RED POTATOES lb. **23¢**

SHOP H&H FOR VALUE!

STARKIST Tuna 6 1/2 oz. can **63¢**

LIBBY'S PINK Salmon Half Size Can **89¢**

FROZEN FOOD

ROSEDALE Orange Juice 12 oz. can **57¢**

ORE-IDA POTATOES O'BRIEN **63¢**

BOOTH'S BATTERED FISH CHEF-CUT **1.43**

SWANSON'S FRIED CHICKEN on DINNERS **77¢**

MRS. SMITH'S PIE WALNUT **1.29**

Duncan Hines Moist & Easy **Cake Mix** 3 Flavors 13 1/2 oz. box **69¢**

REFRESHING **DR PEPPER** 4 **1**

OTIS PEPSI DEPOSIT

TRAPPEY'S Lima Beans 300 CAN **4/\$1**

GOLD MEDAL **FLOUR** 5 LB. **39¢**

WITH 1.50 PURCHASE OR MORE EXCLUDING CIG. & DOG FOOD

BREMNER MARSHMALLOW PIES BANANA or CHOCOLATE **59¢**

WOLF BRAND **CHILI** 19 OZ. CAN **79¢**

MORE H & H **SPECIALS**

Gala Family NAPKINS, 140 ct. .49

Kraft TARTER SAUCE, 6 oz. 39¢, 9 oz. .59

Wilson's Ribbon Cane SYRUP, 1/2 gal. 1.99

Del Monte PRUNE JUICE, qt. btl. .89

Nestle Instant TEA, 3 oz. jar 1.69

Del Monte CATSUP, 32 oz. btl. .89

Del Monte PINEAPPLE, sliced chunk or crushed, No. 1 1/2 can .49

Hi-C FRUIT DRINKS, 46 oz. can .49

Delta Homestyle Kosher DILL PICKLES, qt. .69

Berna GRAPE JELLY, 18 oz. jar .59

Nestle COOKIE MIX, 4 flavors, 12 oz. box .79

Ralston CHEX CEREAL, either .69

WOLF CHILI HOT DOG SAUCE 10 oz. can **4/\$1**

DAIRY SPECIALS

CABELL'S 16 oz. ctn. Cottage Cheese **69¢**

BORDEN'S 100% Natural Flavor Yogurt 8 Oz. Ctn. **4/\$1**

BORDEN'S 1% SANTA MARIA Milk Gal. Ctn. **1.39**

CABELL'S Fruit Drink Gal. Jug **79¢**

BORDEN'S Buttermilk 1/2 Gal. Ctn. **79¢**

COVER GIRL SHINY LIPSTICKS 1.29

PKG. OF 18 **ICY POPS** 79¢

BIG BUTANE LIGHTERS 88¢

WE HAVE A COMPLETE LINE OF **CANNING SUPPLIES** IN STOCK. WE HAVE JARS, JELLY JARS, GLASSES, LIDS, RINGS & LIDS, SURE JELL, CERTO AND SO FORTH, ETC.

CANNED GOODS

ROSEDALE Cream Style or WK Corn 303 CANS **4/\$1**

ROSEDALE Sweet Peas 303 CANS **4/\$1**

ROSEDALE Tomato Sauce 8 Oz. Cans **6/\$1**

ROSEDALE Fruit Cocktail 303 Can **2/79¢**

CONTADINA Tomato Paste 60Z **3/87¢**

SWIFT'S Potted Meat 3 OZ. CAN **5/\$1**

GEBHARDT'S JUMBO Tamales No. 2 1/2 Can **59¢**

KITCHEN KRAFT BLACKEYE Peas 300 CAN **4/\$1**

ROSEDALE Halves Apricots No. 2 1/2 Can **59¢**

UNCLE WILLIAMS WHITE Hominy 300 CAN **5/\$1**

YOU'RE OUT OF THE RED

with These Bigger, Better Food Savings

HEALTH & BEAUTY AIDS

BAYER ASPIRIN 24's **.59**

BRUT 33 SPRAY DEODORANT 7 OZ. CAN **1.49**

LOREAL HERBAL SHAMPOO 8 OZ. BTL. **1.39**

POND'S DUSTING POWDER **.99**

AQUANET HAIR SPRAY **.89**

GEORGIAN BATHROOM **TISSUE** 8 ROLL PACK **\$1.39**

KRAFT MACARONI & CHEESE DINNERS **4** 7 1/2 OZ. BOXES FOR **\$1**

FRESH WATER STEAKS **CAT FISH** lb. **\$1.39**

We Feature **ROEGEIN Lean Pork**

SMOKED **PICNICS** ★ lb. **59¢**

SLICED 69¢

SHANK PORTION 59¢ BUTT PORTION 69¢

ROEGEIN SLICED SLAB lb. **1.09**

BACON lb. **1.09**

ROEGEIN MEAT **FRANKS** ★ lb. **69¢**

ROEGEIN LUNCH MEAT SALAMI BOLOGNA SP. LUNCHEON lb. **1.19**

ROEGEIN LUNCH MEAT - 6 OZ. PACKAGE - YOUR CHOICE... 49¢

FRESH TENDER **CALF LIVER** LB. **79¢**

GALA II **PAPER TOWELS** JUMBO ROLL **59¢**

YOUNG Turkey Wings lb. **49¢**

ROYAL HART JR. Turkeys 8 to 10 lb. average lb. **59¢**

Grain Fed **STEAKS and ROAST**

ROUND STEAK lb. **1.29**

Sirloin STEAK lb. **1.09**

T-BONE STEAK lb. **1.39**

Tenderized STEAK lb. **1.49**

Club STEAK lb. **1.59**

SHORT RIBS lb. **79¢**

RUMP OR ROUND BONE SQUARE CUT ROAST lb. **1.09** lb. **89¢**

PIKES PEAK BLADE CUT ROAST lb. **1.29** lb. **.59**

TENDER MAID **BEEF PATTIES** lb. **\$1.29**

MEATY BRISKET STEW lb. **59¢**

THANK YOU CHERRY Pie Filling No. 2 Can **89¢**

CAMPHO PHENIQUE LIQUID 1 OZ. BTL. **.59**



Values by the bagful! Check our grocery shelves for canned goods and staples at thrifty prices. Visit our produce department for the freshest fruits and vegetables... come to our meat department, too, for quality at savings. Shop a wide selection of frozen foods. Always, extra value.

TAKE HOME SAVINGS

WE GIVE BIG BONUS STAMPS

H&H

GROCERY

Faith dispels Our Fears about the future

The future is something we view with alarm,
When we think what tomorrow might bring,
For we all are concerned with our safety from harm
That could come from some terrible thing.
Yet through faith and your Church you develop a trust,
Then the future can bring what it may,
For you'll learn through each lesson that will be discussed
That the Lord will protect you today.
So, forget all those things that may never appear,
Such as poverty, sickness or crime;
You can go all through life and have nothing to fear,
If you'll live it one day at a time!

— Gloria Nowak



THE FOLLOWING MERCHANTS URGE YOU TO GO TO CHURCH

And if to-morrow shall
be sad, Or never come
at all, I've had
At least today!

—Edward Hersey Richards

Childress Monument Works
Remembrances of everlasting beauty
4 Miles South of Woodville on Hwy. 69

John's Ranch House
STEAKS - BARBECUE - LUNCHEONS
519 S. Magnolia Woodville, Texas

H & H Cash System
We lower your cost of living
Highway 69 Kountze, Texas

HELP SPONSOR OUR CHURCH PAGE

Kountze Insurance Agency
THE INSURANCE STORE
Phone 246-3831 Kountze, Texas

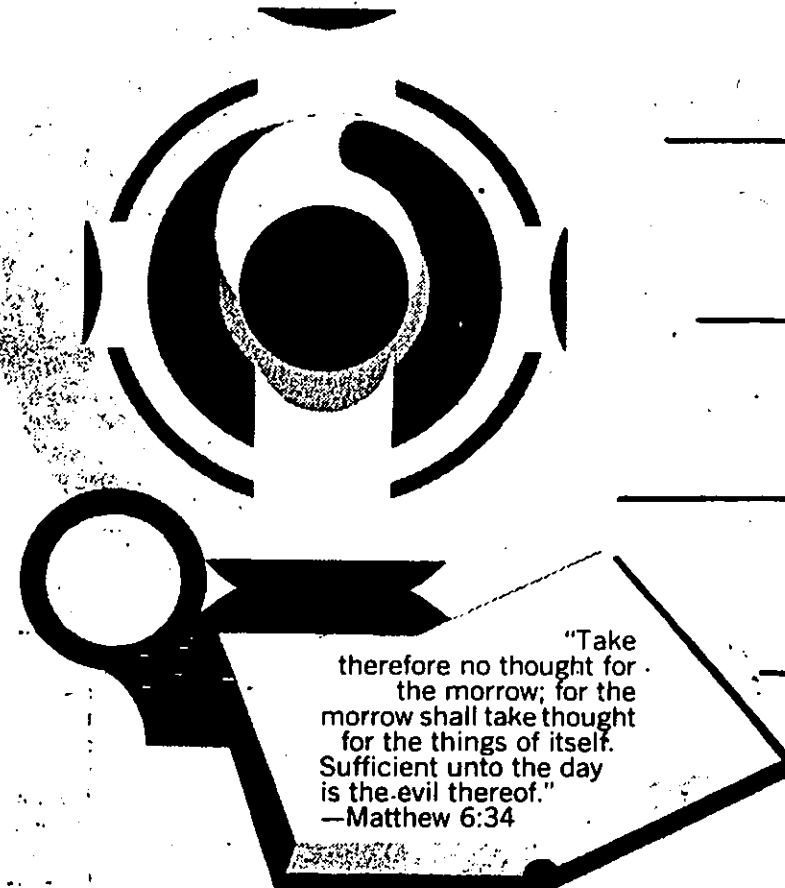
Boykin Lumber Co.
Everything you need to build with
Highway 69 South - Woodville, Texas

IT COSTS ONLY \$5 PER WEEK

IF INTERESTED CALL 283-5332 OR 246-2323

...ATTEND THE CHURCH
OF YOUR CHOICE THIS SUNDAY

PATRONIZE THE SPONSORS OF THIS COMMUNITY SERVICE



"Take therefore no thought for the morrow, for the morrow shall take thought for the things of itself. Sufficient unto the day is the evil thereof."
—Matthew 6:34

50th Anniversary



GOLDEN CELEBRATION—Mr. and Mrs. Dock Flowers of Honey Island are observing their 50th wedding anniversary on April 3rd. All friends and relatives are invited to this happy occasion. Join them during open house on March 31 between one and five p.m. Mrs. Harold Grant will assist the couple with festivities. The Flowers have one son, Dock Jr., and one grandson, James.

Get Information Together First to Apply for SSI

People who plan to apply for supplemental security income payments (SSI) can save time by first getting together some information about themselves, according to social security officials here.

The SSI program makes monthly payments to people with little or no income and limited resources who are 65 or over or blind or disabled. People can get information about applying for the payments by calling or writing any social security office.

"When applying," a spokesman said, "it's a good idea to have with you as many of the following as possible: a checkbook, if you have one, to show how much you have in the bank, any savings account books, stocks and bonds, life insurance policies, automobile registration cards, last year's income tax return, W-2 forms, and evidence of all other income."

It may save time, too, according to the spokesman, if people applying for SSI payments know how much cash they have on hand and know the value of their car, if they own one.

"You should also have your social security card," he said. "Disabled or blind students 18 to 22 should have a school identification card, tuition receipts, or similar evidence of school attendance."

The supplemental security income program is administered by the Social Security Administration, an agency of the U.S. Department of Health, Education, and Welfare.

People can get information about applying for SSI payments by calling or writing any social security office.

Patronize our advertisers!

When someone in a car ahead of you slows to turn or prepares to stop, be courteous and pull slightly to the right so the driver behind you can see his brake light.

NOTES from Eloise

by ELOISE BEAN

The Royal Purple glory of the Wisteria is with us again. What a feast for the eyes it grows to luxuriously, even with running up into the trees, shrubs and even wires. In fact, it can become a nuisance if not controlled. Have you ever found anything tougher than a Wisteria runner? Surely technology can find a use for those tough fibers. Since we have so much Wisteria already and can grow more so easily, why don't we have a Wisteria Festival? Are you listening Kountze Chamber of Commerce?

We are sincerely distressed over the refinery blast and the resulting deaths and injury, but thankful our own Robert Williford escaped as lightly as he did. We understand he was just minutes away from entering the very still that blew up to do some brick work.

The Ladies of Bethel Baptist church will have an all-day seminar on March 28 at the church at 10 a.m. Speakers will include Mrs. Roy and Mrs. Watts and Mrs. Michelins from Clute, Texas; Mrs. Campbell from Dallas and Mrs. Snow from Lumberton.

A covered dish luncheon was served at 11:15 a.m. The Faith Frontiers conference will be held from March 28 to April 3 at 7 p.m. Among the speakers who will participate in the conference in a single appearance as guest speaker are Rev. Snow from Lumberton, Rev. Sanders and Rev. Michelins from Houston, Rev. Edgar McNeely of Eleventh Street Baptist Church of Beaumont, Rev. Lott of Grace Baptist Church of Vidor, Rev. Lester Hudson of Beaumont, and Rev. J. D. Jennings of Vidor. Rev. Roy W. Faver is the pastor. The public is invited.

Work days are held each Saturday at the church with the completion of the expansion progressing. The men are amply paid for their volunteer labor with the delicious food the ladies bring for their lunch.

County Judge and Mrs. Emmett Lack attended a St. Patrick's Day party in the home of Mr. and Mrs. Rufus Kilpatrick in Beaumont. Judge Lack and Kilpatrick both served in the Texas Legislature together.

Our sincere condolences to the Cruse, Brackin and Hooks families in their recent bereavement.

Heartiest congratulations to Diane Watson, daughter of Mr. and Mrs. David Watson, who is one of the five Hardin county students winning a trip to Valley Forge, Pennsylvania, and a Freedom Foundation scholarship. Congratulations to the other students, also. We are proud of them.

Cindy Hargraves, daughter of Mr. and Mrs. Hubert Hargraves was crowned Miss Kountze of 1977 by her predecessor, Lori Grant, in ceremonies during the pageant Saturday night in the high school gymnasium.

Donna Key Williams, daughter of Mrs. Bobbie Helen Williams, and Tony Overstreet, daughter of Mr. and Mrs. Winston Overstreet, were first and second runners-up. Larkin Loftin, daughter of Mr. and Mrs. Donald Loftin, won the title of Miss Congeniality. All the winners were presented trophies by the Kountze Business and Professional Women's Club which sponsors the annual event. Miss Kountze was also presented a bouquet of red roses. She will also be awarded a \$200 scholarship. Proceeds of the pageant go to the scholarship fund.

Out-of-county judges were Mrs. Beverly Landrum of Groves, Mrs. Linda Berry of Port Arthur and Mrs. Kelly Kamp of Lumberton.

Roy Langston was master of ceremonies. Mrs. Margie Schram provided background music for the presentation of the girls. Heather Shane and Tracey Rhodes were attendants to Miss Kountze. Larry Whitman was emcee and Joe Swearingen was photographer. David McIntyre provided entertainment.

The First United Methodist Church of Kountze will observe Holy Week April 4-7. Bishop Finis Crutchfield of Houston will be guest speaker. There will be other ministers who will speak during that time. While the Bishop and his wife are in Kountze they will be honored with a tea in the home of Mrs. Hazel Brady. Members of other churches are invited to attend the services.

Mrs. Fleta Coe, county Crusade Chairman for the American Cancer Society, has announced that Mrs. Emmett Hobbs will be the chairman for Batson during the fund-raising drive.

The name Calvin comes from the Latin meaning "bold."

THE GOOD WORD from the Bible

Many times, those who sought to discredit Jesus would ask him what he today would call a "leading" question. Close on the heels of a leading question there is always a second question. It's a method employed by many successful lawyers — one or more "leading" questions to lay groundwork for a question of greater importance.

Jesus had a way of responding to "leading" questions. He knew, of course, the point to which his critics were working. He answered in parables, with meanings clearly understood.

When they asked Jesus if it was lawful to heal on the Sabbath, he reminded them they would not hesitate to recover a sheep that had fallen into a pit on the Sabbath and, therefore, it was lawful to "do well" on Sabbath days.

As the shepherd would save his sheep, so would Jesus tend to the needs of a man with a withered hand.

DID YOU KNOW? By Eloise

OPOSSUMS AMERICANS AVERAGE HEAVY 100 POUNDS OF SOFT DRUGS. YES!

ARE THE ONLY NATIVE MARSUPIALS IN NORTH AMERICA (MARSUPIALS ARE MAMMALS THAT CARRY THEIR YOUNG IN THE MOTHER'S POUCH). BABY OPOSSUMS ARE SMALLER THAN HONEYBEES. FOOT DANGER: AN OPOSSUM LIES STILL. PRETENDING TO BE DEAD. FOOTPRINTS OF THIS ANIMAL ARE IDENTIFIED BY THEIR LONG, WIDELY SEPARATED TOES. OPOSSUMS HAVE 50 TEETH. SOME SPECIES FROM SOUTH AMERICA ARE AS SMALL AS MICE!

IRISH LITERARY FIGURE OF THE EARLY 1900'S GEORGE BERNARD SHAW WON THE NORTON PRIZE FOR LITERATURE IN 1925. IN HIS LITTLE MORE THAN 60-YEAR CAREER, HE WROTE 50 PLAYS TO ADVANCE HIS IDEAS OF SOCIAL REFORM. HE WAS CONSIDERED WITTY.

THE HERALD

Subscription Service Form
My Name _____
Address _____
City _____
State _____ Zip _____

Kountze Office: P.O. Box 378 246-2323
Woodville Office: P.O. Box 987 283-5332

Hardin County Training Set In Pesticides

Hardin County producers will have an opportunity to complete a training program leading to certification as private applicators at one of two programs scheduled for Monday, April 4 at 1:30 p.m. and 6:30 p.m. in the west wing of the county courthouse in Kountze, according to Jimmy F. McClevey, county Extension agent.

The Private Applicator Certification Training Program, one of the optional means of qualifying for certification as a private applicator of restricted-use pesticides, includes a discussion of laws, labels and labeling, pesticide safety, mixing and calibration and pests and pest damage identification. The program is prepared by the Texas Agricultural Extension Service. It includes a review of certain questions relating to the information presented. The program will require approximately 3 1/2 hours. Those attending and seeking certification as private applicators will have an opportunity to complete a Request for Private Applicator Certification which will be forwarded to the Texas Department of Agriculture (TDA) for issuance of certification.

As an alternative to participation in a training program, an individual may qualify for certification as a private applicator by submitting a completed questionnaire to the Texas Department of Agriculture following a review of self-study materials which may be obtained at the county Extension office.

"Money makes a man laugh."

ELECT W. G. BIRDWELL MAYOR of Kountze

W. G. Birdwell has announced his candidacy for mayor of Kountze by pointing out that Kountze needs activist leadership at this stage of development. As mayor, Birdwell said that he would cooperate with county commissioners in continuing efforts to get another doctor for Kountze.

"It is also time," Birdwell said, "for this community to begin working toward the building of a modern, new hotel in Kountze. I shall work with the Big Thicket Association to achieve this goal. With tourism looming as possibly this part of the county's greatest asset, we should begin now to try to get a hotel."

Mr. Birdwell served two terms as mayor several years ago. It was during his tenure of office that the city began collecting garbage and obtained a dump site. At the same time, the city, guided by the mayor and city council, started the city library by giving it space in the city hall. The library now occupies the entire building.

Birdwell said he will appreciate the vote of all who believe that leadership can get things done in Kountze.

Birdwell came here after World War II and founded Birdwell's Department Store which he still operates.

The city election will be held Saturday, April 2 at the city hall, Highway 69 North.

VOTE APRIL 2

Paid political advertisement by W. G. Birdwell, Kountze, Texas.

CHARLES A. LOFTIN CANDIDATE FOR CITY COUNCIL City of Kountze

1. What are your qualifications for the office you are seeking?
I am a father of three children, 44 years of age, and have resided in the City of Kountze for almost twenty years. For several generations, my family has lived in the southeast Texas area. Kountze is "home" to my father, A. E. "Shorty" Loftin, and his wife were for many years in business here in the City of Kountze and are now retired. I am currently employed at Texaco Research in Port Arthur, and have been since 1957. My wife and I are members of the First Baptist Church of Kountze, and have worked for years with local, civic and fraternal organizations.

The qualifications that I would bring to the City Council are:
(1) A level head;
(2) A desire for the improvement of the City of Kountze;
(3) New input of ideas;
(4) Improvement of services;
(5) No new city taxes;
(6) I could go on and list qualifications and ideas on a very long list.

I will try to summarize it and say that as a member of your City Council, I will represent you, the people. And, from time to time as situations arise and circumstances vary, my hope is that you will inform me of your will and desire on what you want done and then as your representative on the City Council, I will carry out your wishes.

2. Why are you seeking this office?
The reason I am seeking the office of City Councilman, is to give a voice to the people and to carry out the wishes of all the people in the very best manner possible, rather than to become a City Councilman with some preconceived ideas and opinions and fail to listen to the will of the people. It appears to me that, here of late, there has been a lack of representation of the people and it will be my policy to do everything within my power to represent the people as a member of the city council.

3. What do you see as the major priorities for the city in the future?
Why?
The major priorities for the City of Kountze in the future is a continued and accelerated rate of growth providing jobs and opportunities without an increase in taxation. I believe that Kountze is on the threshold of growth. We are strategically situated. We have land, highways, railroads, water, natural resources, capable intelligent people, hard-working people, and are beginning to get new leadership, new finance is coming to Kountze. Kountze needs proper representation on its city council to utilize all of these blessings that we have and to see that our city government works for the people in our endeavor to handle the expected growth and development of the near future.

4. How do you think these priorities should be met?
In placing the priorities in proper perspective, a continued input will be needed from the members of the general public to see that city services are furnished. There is a need in certain sections of the City for gas, water and sewage in areas that should already be developed and will be developed in the immediate future with the city services being furnished to new customers. My candidacy is not one of criticism of all of those people who have worked long and hard in the past, some of whom for longer lives in this area, but it is a candidacy to take up where we are and move forward in our development in a proper manner, giving services to all of our citizens.

In seeking this office, I do so with the belief that I can properly represent the people, that they will come to me with their ideas, thoughts and wishes, and that I can be a voice for them in the development of Kountze, which is going to be at a faster rate in the future than it has been in the past.

Your vote and support for me will be appreciated.

Paid political advertisement by Charles A. Loftin, Kountze, Texas.

GO with a winner!

JOIN OUR HAPPY FAMILY OF ADVERTISERS

THE HARDIN COUNTY HERALD



REGIONAL
ROUNDUP

DEDICATED TO THE PROGRESS OF OUR COMMUNITIES

VOLUME 7 - NUMBER 7

POST OFFICE BOX 578

KOUNTZE, TEXAS 77826 WEDNESDAY, FEBRUARY 16, 1977

TELEPHONE 248-2323

15c PER COPY

COMMISSIONERS COURT SCENE OF WILD FRACAS

Court Treatment of
Juveniles Debated

NEWSLETTER



THE TYLER COUNTY HERALD

THE EAST TEXAS REVIEW

DRUG FIENDS
UP TO TRICKS
See 'Meandering'

VOLUME 2 - NUMBER 8

1008 WEST BLUFF STREET

WOODVILLE, TEXAS 75979 THURSDAY, FEBRUARY 24, 1977

1.00 PER YEAR

EX-CON HELD IN FIVE

Town Talk
by BARBARA

Glad to report that at the COMMISSIONERS COURT meeting Tuesday morning, all the commissioners seem to have recovered their voices. The meeting I attended is pretty routine; however, I bet the one they had before my arrival was a lot more interesting. Speaking of these meetings, it would be nice if they would advise us in paper when they call emergency secret special meetings.... Sure seems like DEPUTY POWELL has a whole lot of trouble keeping up with his truck.... Under the RADIO SHACK is in the process of being

East Texas

Sunday, September 5, 1978

review

MAGAZINE SECTION

Woodland Trail

WHERE THE BARGAINS ARE . . .

PINEYWOODS

shopper

Bulk Rate
U.S. Postage
PAID
Permit No. 45
Woodville, Texas

WEDNESDAY, MARCH 9, 1977

A Star PUBLICATION

We offer the merchants of the area one of the finest combinations ever put together . . . superior ad make-up, excellent printing quality plus unique circulation advantages. We have two advertising representatives at your beck and call who will do their damndest to see that your ad is picked up, set and delivered to your potential customers. Give us a chance to prove ourselves. Our rates are reasonable and commensurate with our fast growing readership!

Mr. / Club, ad for Tues will beg All r country visitors For f

He

On W

bridge in

The

shworth, 81, of Fred, Texas. With him was his son, David, 7. Both were injured and carried to Tyler County Hospital by the Tyler County Sheriff's Department.

STAR NEWSPAPERS

ine tled rise exas

nt of Dr. out dues the low-exas at- lized

per acre for rural land from \$300 to \$445.

Havenza, an economist for

BIG THICKET CENTER HASSLE HEATS UP

GO WITH . . .

Consensus Favors
3 NPS Proposals

Commentary By The Editor

THE HERALD

prize. Her visit was prompted, I am sure, by the front page publicity we gave the Saratoga group a few weeks ago.

DON'T FORGET TO VOTE SATURDAY - APRIL 2



THE HERALD

TYLER COUNTY SECTION

WEDNESDAY, MARCH 30, 1977

LANDOWNERS BILKED IN WISD SCHOOL EASEMENT PURCHASE

Herald Newsstand Sales Take Jump

During the last three to four weeks, newsstand sales of The Herald took a sudden upward spurt, and people have been clamoring for The Herald throughout the county and, also, in Hardin County.

One dramatic case-in-point: Sales at the H & H Supermarket in Kountze went from 60 to 150 in two weeks. Dwayne Baker, manager of the store, told us that he was seeing many new faces in his store and that sales have taken a definite jump upward.

Throughout the city of Woodville and in the surrounding countryside, sales have advanced at almost all locations. The number one selling spot in the city is the Woodville Inn. Second in sales and increasing weekly is Grammer's Grocery in the west end, on Highway 190. The Magnolia Drive-Ins are all excellent sales locations. However, Magnolia No. 1, which for months was the leader, has fallen behind North Magnolia and West Magnolia in sales.

We are happy to report this renewed interest in our papers. This goes with our increases overall in all departments, and we are thankful to the many people who have responded to our publication. We look forward to many continued years of association and service.



Well, one of the big weekends has come and gone. It wasn't the greatest weather for a parade, but that didn't seem to dampen the spirits of the approximately 1,500 trailriders, or the crowd that gathered to watch approximately 1,500 horses do their thing. . . . Spotted HELEN CRAVEN checking on the trailriders at Hillier. . . . ARNETTE MARTIN was in from Warren, with JACKIE, JAMIE, and CATHY. . . . understand NANCY ADAMS and JACKIE MARTIN need tire-changing lessons. . . . SONYA SINKS finally said yes to a hair cut and the magic scissors of SCOTT DANIELS gave her a terrific Tinsle (?) . . . Speaking of SCOTT'S, VERA JORDAN, who serves time at Scott's Beauty Cottage, was having her hair done at JUDY'S—her story is that Scott didn't have time to do her. . . . Condolences to JERRY McDONALD on the death of his grandmother in Oklahoma. . . . Some of the CB handles heard around town are terrific—BEDROOM BABOON, WOOLEY BOOGER, WOODVILLE PANTY SNATCHER, MADAM VIRGO, BASHFUL BLONDE, GREY GHOST, SUGAR DADDY, LOVER LADY—and these are the printable ones. . . . BUDDY GOULDE was heading north on 69. Speaking of BUDDY, I wonder if he wants to buy a chocolate pie. . . . Will wonder never cease: I haven't run into FLETCHER GRAHAM all week. . . . BOB BYLAND, the Master Painter, was spotted digging in the dirt. . . . And, TOMMY LATTA was painting the outside of the new branch office of Jasper Federal Savings & Loan in a rain-storm. . . . Did you all see TOMMY Saturday. Wow! Was he all decked out—a real fashion plate in blue plaid western pants, solid blue shirt, gold jacket, wheat-colored hat, and gold stars. He cut quite a figure for a dude. . . . JOE SMITH hurrying from South Magnolia Grocery to East Texas Land. . . . VARNNEY DURHAM was D.Q.'ing it Tuesday; however E.D. prefers Stacy's Burger Bar, as does LONNIE and friends; ELSIE WRIGHT is still Ranch Housing it; while VERA JORDAN headed for the Pickett House; the local gendarmes seem to prefer the Woodville Inn. . . . MRS. JOAN REYNOLDS and CHILDREN have returned from California where they have been visiting a brother, JERRY GRAY. They think California is nice, but are glad to be back home. . . . Have you noticed the justified columns in this week's paper? They are courtesy of my new \$9,000 play pretty. The monster just sits there, grinning at me with its magnificent keyboard, daring me to touch it. The L.B.M. representative who brought it last Thursday, handed me a manual consisting of 200 single-spaced printed pages. He told me to study the manual, page by page, and not to go to another page until I was sure I knew the preceding page thoroughly. Well, I am still on the first page. According to the book, the machine does it all—I can go right margin; left margin; center



HER REIGNING MAGESTY—JILL CRAWFORD—1976 DOGWOOD QUEEN

The Dogwood Festival will come to an end this weekend and Jill will reign no more. The new 1977 queen will be named in ceremonies Saturday as the four runners-up await the announcement. It has been a good festival despite hateful rains last week to spoil the lengthy parade and other activities. Good luck, Jill.

House still in session Rep. Wilson off to Mexico

Reprinted From The Houston Post

WASHINGTON—Rep. Charles Wilson, D-Tex., and his wife have left Washington for a 10-day vacation in Acapulco, Mexico, despite the fact that the House will be in session all next week.

Wilson's administrative assistant, Charles Simpson, initially said the three-term congressman left Thursday for Mexico and would be back "some time in the future." Later, he said his boss would return on April 3.

Asked the purpose of the trip, Simpson answered, "I have no idea. He and Jerry (Wilson's wife) decided to take a week off in Acapulco. Don't try to make anything out of it because it's just as simple as that."

The Lufkin congressman's press secretary, Candice Shy, said she knew nothing about the trip except that "it was his (Wilson's) decision to go."

The House is scheduled to recess for the 10-day Easter break on April 8.

But Shy said Wilson could not take a trip then because he's booked totally solid with speaking engagements back in Texas, 100 per cent every day.

Next week, while Wilson is away, the House is scheduled to vote on President Carter's government reorganization proposal, continued funding for the controversial assassinations investigation and appropriations for the new House Ethics Committee.

The congressman could not be reached for comment.

Cruse Settlement Nets 'A Bundle' Plus Improvements

EDITOR'S NOTE—Some background is probably in order as a prelude to the revelations to follow. Some time ago it was learned that different attorneys had drawn up the papers on the proposed site for the new high school and the easement for access to that site.

Because of a flaw in the access documents, the land owners were not held binding. Three property owners were involved in the total easement: Mrs. Seta Eaves, Mr. and Mrs. R. A. Philips and Mrs. Freda Cruse. Two of the owners accepted, as far as we can ascertain, the original offer of the school board—\$500 per acre—with no contest.

Mrs. Cruse refused to accept the offer and backed out. The school board then filed suit against her. She hired an out of county attorney to represent her in the litigation. In the first suit, attorneys included the original option and indefinite boundaries—which her lawyer could not follow.

He requested that the suit be redrawn. The second suit contained definite legal boundaries but the suit named Mrs. Cruse's son as co-defendant. Her son has no legal rights to the property. . . . but this was not the only reason for rejecting suit number two: Attorneys for the school failed to wait the ten days allotted by law for Mrs. Cruse to answer the suit. Her attorney again requested a nullification. This suit was set for March 15.

The third suit was in order and set for March 30 but the parties settled out of court prior to the hearing.

That case was listed: WISD versus Freda Cruse in the District Court of Tyler County, Case No. 9932. Again the Cruse attorney brought issue. . . . because the suit should have read CITY OF WOODVILLE vs. FREDA CRUSE since the city must purchase the right-of-way, NOT the WISD.

Now we come to some interesting questions and all will note the reaping benefits extolled in the legal document reproduced below. After objections by Mrs. Cruse on the original offer a second appraisal was made which doubled more or less the first. However, after a third appraisal was made by an out-of-county appraiser and her attorney made demands for damages plus city improvements—Mrs. Cruse got a "bundle" of money—plus the benefits listed in in the document entered into with the City of Woodville.

The most interesting question about this fiasco is in the last paragraph of the following story:

Printed below, in its entirety, is the final easement purchase agreement between Mrs. Freda Cruse and the City of Woodville regarding access to the land on which the new high school is to be built.

THE STATE OF TEXAS
KNOW ALL MEN BY THESE PRESENTS
COUNTY OF TYLER

THAT I, FREDA CRUSE, of Tyler County, Texas, for and in consideration of the sum of Ten Dollars (\$10.00) and other good and valuable consideration to me in hand paid by the City of Woodville, Texas, a municipal corporation of Tyler County, Texas, the receipt of which is hereby acknowledged, have GRANTED, SOLD and CONVEYED and by these presents do hereby GRANT, SELL and CONVEY unto the said City of Woodville, Texas, subject to the conditions below stated, an easement for the purpose of constructing and maintaining a public street, upon, over and across the following described strip of land situated in Woodville, Tyler County, Texas, to-wit:

A strip of land seventy (70) feet in width, being thirty five (35) feet on each side of the following described centerline, over and across a part of a 55.4 acre tract more or less out of the Harmon Lewis Survey Abstract 433 Tyler County, Texas, conveyed to J. M. Cruse by deed dated March 20, 1957, recorded in Volume 160 page 293 of the Tyler County deed records, said centerline being described as follows:

BEGINNING at a point in the most Northerly North line of the above mentioned 55.4 acre tract more or less N 70 degrees 50' 01" W 36.76 feet from a concrete monument at the most Northerly Northeast corner of same from which a 24" Hickory Marked x bears S 78 degrees 00' E 15.28 feet.

THENCE S 01 degrees 23' 18" W 618.95 feet to a point.
THENCE S 03 degrees 33' 34" W at 586.32 feet the Terminus of this centerline in the Southline of the said 55.4

Continued on second page

M
A
R
C
H
3
0
1
9
7
7

THE HERALD --- FASTEST GROWING NEWSPAPER IN EAST TEXAS!



PICTURED ABOVE—Is the Genr vehicle which was involved in a collision Friday night, March 25, in which seven people were injured. See the full story in News Round-Up.

TYLER COUNTY NEWS ROUNDUP

7 injured in collision

Seven people were injured Friday night, March 25, when a 1977 Plymouth Fury driven by Donald Geer of Houston hit a 1977 Chrysler driven by Winnie Lopez of Camden, Texas. The accident occurred at 10:00 p.m. on Highway 287 where it intersects with Highway 256 in front of This Old House.

Carried to Tyler County Hospital by Ellender Ambulances of Woodville were James Durrett, 39, of Houston, Texas, a passenger in the Genr car; Dorothy Lamb, 69, of Lufkin, Texas; Winnie Lopez, 49 of Camden, Texas; Linda Hughes, 25; and Mrs. Hugh's 4-year-old son and 3-month old daughter, all of Sacramento, California.

Mr. Durrett was later transferred to St. Elizabeth Hospital in Beaumont; and Mrs. Lamb, to Lufkin Memorial Hospital in Lufkin. All the other occupants were treated and released from Tyler County Hospital.

The accident was investigated by D.P.S. Officers Jim Deal and Billy Platt.

Man commits suicide

Glyn Price, whose residence is five miles west of Colmesneil on Highway 256, apparently committed suicide sometime between Monday and Tuesday, March 28 and 29.

His body was found by Raymundo Lara, and it was estimated that he had been dead from six to eight hours when found on Tuesday. Mr. Price had been shot in the head with a 16-gauge shotgun.

The body was taken to Edwards Funeral Home and later transferred to Nunly-Stanley-Stickley Funeral Home in Port Arthur, Texas.

Tennis tourney April 4-5

All interested people are invited to participate in an open DOUBLES ONLY Tennis Tournament, April 4 and 5 at the Woodville Tennis Courts.

The events scheduled are: Men's Doubles, Women's Doubles, and Mixed Doubles.

The entry fee is \$5 per team, plus one can of balls. Deadline for the entries is April 1.

All interested players should contact Coach Ramos at 283-2529 or 283-2064; or mail their fee and entries to the following address:

Sergio A. Ramos
P. O. Box 54
Woodville, Texas 75979

Play will begin Monday, April 4 at 8:30 a.m. Players should report to the tennis courts then to find out who and when they play. Players may enter two events only.

This tournament is open to high school, junior high school, and any interested adult.

Sunrise service set for Easter

A Community Easter Sunrise Service will be held Easter Sunday, April 10, at 6:30 a.m., at the Dogwood Amphitheater. This special Sunrise service is under the sponsorship of the Tyler County Ministerial Alliance.

Rev. Clyde Bennett, pastor of the First Christian Church, Woodville, will be the guest preacher for this service. Other ministers participating in this service will be Rev. D. M. White, pastor of the Grovton Baptist Church; and Rev. David A. Hutchins, Pastor of the Woodville United Methodist Church.

Everyone is cordially invited to attend this impressive Easter Sunrise Service.

Museum tours Saturday

The Allen Shivers Museum will be open for tours all day Saturday, April 2, except during the Dogwood Festival Parade. The Museum will open at 9 a.m. and close about 2 p.m. on Saturday, but will reopen immediately following the parade.

On Sunday, April 3, tours will be available at the Museum from 3:00 to 4:30 p.m.

AUTHORIZED Briggs & Stratton Dealer
And
AUTHORIZED TECUMSEH PARTS

DEALER FOR Poulou Chain Saws
MERRY TILLEY, ROOF & LAWN BOY Lawnmowers
Sales and Service
Saw filing of all kinds - sharpen most anything!
Jack's Saw & Sharp Shop
Spring Valley Drive 283-3133

JUDY BROWN FOR SCHOOL TRUSTEE
COLMESNEIL INDEPENDENT SCHOOL DISTRICT

As a concerned parent and citizen of Colmesneil, I am seeking your support in the election on April 2.
I am an active member in our Parent-Teacher Organization and help support other important activities in our school.
My husband, Travis Brown, and I are both natives of Colmesneil and graduates of Colmesneil High School. We have three daughters, Angela, 7; Amy, 5; and April, 3.
If elected, I will do my very best to work with all parents, teachers, and Board members toward a better school system for our children.

VOTE JUDY BROWN APRIL 2
Paid Political Advertisement by Judy Brown, P.O. Box 400, Colmesneil, Texas.

CLASSIFIED CORNER
In the early 1900s Anton Heidan spent 22 months pushing his wife and daughter in a cartage a total of 18,000 miles through the streets of Paris.

after you see your doctor...
bring your prescription to
Bob's Prescription Shop
1010 W. BUILT WOODVILLE PH 283-3073

Dozer And Blade Work
BLACK TOP DRIVEWAYS
All kinds of dirt, top soil and gravel
283-2810 283-3044 283-2177

The Quick'n Easy Way
Sears Service Calls, & Telephone Shopping
283-3756
Owned & Operated by Dorothy Nettles

JOHN DEERE EQUIPMENT
LAWN & GARDEN AGRICULTURE INDUSTRIAL FORESTRY
HEIN'S SOUTH CO., INC.
HWY. 95 SOUTH LIVINGSTON, TEXAS
PHONE 327-5718
BRENT HARPER
SALES REPRESENTATIVE HOME 327-0188

SOUTHEAST TEXAS SAVINGS AND LOAN ASSOCIATION
283-3747
106 W. BLUFF

INSURANCE
AUTO - HOME - LIFE - BONDS
CITIZENS OFFICE BLDG.
104 W. BLUFF
TOM McGUIRE - Mgr.
283-2528
THE HARTFORD
GLOBE-MANN INSURANCE AGENCY

THE MARKET PLACE
Where our readers Buy - Sell - Rent - Hire - Trade

FUNNYSIDE
Individual would like to rent a mobile home, on a private lot, outside of the city. Call 246-2323.
We need a waitress. No experience necessary, as we will train. The Wagon Wheel, Highway 327.
Will Betty Sola please get in touch with The Herald office. 283-5332.
Do you have a good, non-electric sewing machine. If so, please call me at 246-2960.
Did you know that Walt Dever at Twin Oak Farm at Spurger buys and sells meat and milk goats. He even offers a goat breeding service. And...he would like to buy one or more milking does. Visitors welcome. 429-3586.

Adele Brown slices meat that is sold at This Old House near Woodville.

This Old House
WOODVILLE - The country store at This Old House nine miles from Woodville specializes in ham, bacon and sausage which are smoked in a smoke house on the premises.
The store also has a complete line of groceries, said Adele Price of Port Arthur. Mrs. Price owns the country store, an antique shop and a barbecue restaurant, which are all part of This Old House.
"In the country store, we have the highest quality smoked meats, which we sell for home consumption. Mrs. Price said. "Our bacon can be purchased by the slab or sliced to the thickness desired by the customer."
The restaurant offers sandwiches, plate lunches, links and sliced meats. Mrs. Price said. The nearby antique store has a variety of merchandise, from unusual glass to antique furniture.
The latest addition to This Old House is a greenhouse and nursery which contains orchids, African violets, shrubs and other plants. Seeds can also be obtained from the greenhouse, which is leased from Mrs. Price by Corabelle Grimes.
This Old House is located nine miles northwest of Woodville on U.S. 287 near that highway's intersection with Farm Road 255.

Richard's Welding And Cutting
On the job - day or night
Also: Trailer Houses Moved
Phones: 283-2810 283-2177 283-3044

PIONEER CHAIN SAWS
Built for the long run.
DURHAM SAW CO.
CHAIN SAW HEADQUARTERS
Complete Saw Service and Parts Dept.
BEAUMONT HWY. PHONE 283-2750
WOODVILLE, TEXAS

Sold thru the Classified Ads

LEGAL NOTICE
Invitation For Bids
Southeast Texas Savings and Loan Association (STSL) Woodville, Texas will receive bids for construction of Branch Office at Woodville, Texas. (Including site improvement and utility work) until 3:00 p.m. C.D.S.T. on the 16th day of April, 1977, at the home office in Woodville at which time and place all bids will be publicly opened and read aloud.

6¢ Per Word - \$1 Minimum
All classified ads must be paid for in advance. Deadline for submitting ads is Monday at 4 p.m. each week.
Use The Market Place regularly!

Big Mama and Big Daddy invite you to visit
Big Mama's CAFE
AND RECREATION CENTER
Across from school Spurger, Texas
Home Of The Famous **SPURGER-BURGER**

BUY - SELL - TRADE
ANTIQUES, JUNK, TOOLS, FURNITURE
IF IT CAN BE BOUGHT—WE BUY IT!
BURNS GENERAL MERCHANDISE
US 88 AT HILLISTER
JACK & LINDA BURNS PHONE 283-5648
Come and browse around—we might have it!

REAL ESTATE
11.3 acres, county road frontage, high level land
3.4 acres, 2 BR house, hwy. frontage and city water
12.92 acres, underbrush, fenced with lake site, beautiful hardwood area and level land.
1.97 acres on highway 256
1.73 acres on hwy. 256 near Camp Niwasa, open land, some trees.
LOTS, RANCHETTES AND ACREAGE, hardwood trees, at Spurger.

ACREAGE AVAILABLE
15 - 25 & 35 ACRE TRACTS AVAILABLE
Any or all my land will go Texas Veterans.
W. O. JORDAN
OFFICE: 283-5752 HOME: 429-3379
IRON ORE - GRAVEL - CLEAN WASH GRAVEL - TOP SOIL - LIMESTONE ROAD BASE - BULLDOZER and BACKHOE WORK
We install new septic tanks and field lines

Order Your Want Ad
BY MAIL
It's Easy... It's Fun!

CLIP AND MAIL TO THE HERALD. PAY ONLY FOR WORDS SUBMITTED. WE WILL REWRITE INTO A FOLSKY PARAGRAPH.
NAME _____
STREET _____
CITY _____ **PHONE** _____
RUN AD _____ **WEEKS** _____ **I ENCLOSE \$** _____

1 Line
2 Lines
3 Lines
4 Lines
5 Lines
6 Lines
7 Lines
8 Lines

Meandering
... with the editor

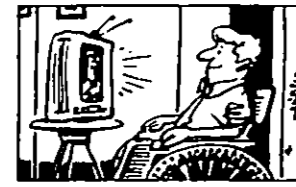
We believe that these are the points to consider when we elect a person to the school board...
He should ascertain if the superintendent and administrators are earning their salaries...
He should believe that the average citizen's rights are desirable and of value...
He should not be more interested in the three R's than growing programs not properly evaluated...
A board member should oppose contracts which run indefinitely (with extensions before expiration, etc.)...
Citizens should be furnished with financial reports and detailed expenditures involving bond issues...
A board member should ask for daily written reports on maintenance, all athletic and band expenses...
He should give all teachers a minimum time to evaluate their problems. In doing this teachers will be able to reconstruct themselves in a way that lets teacher and student interact as human beings...
He should always be conscious of cost cutting areas in holding down the tax spending...
He should realize that work is the best discipline...
Drug and theft problems should be turned over to juvenile authorities...
Architectural comparisons should be made with no more than 10% variation.

TIPS FOR OUTDOORSMEN

Cautious Cruising
If you're on a pleasure kick it's a good rule to never drive your boat farther from home port than one-third of your fuel supply.
Reason is—you'll have more than ample gas to return home safely without running the tank dry. After all, this is supposed to be a pleasure trip.
There's not much fun "padding" even if you're in sight of shore.
Use Dip Stick For Oil
When you have a flat tire and encounter difficulty removing tight lugs from the wheel of your car or trailer, a few drops of oil will help loosen 'em up a bit.
No oil handy?
Then remove the dip stick from the engine and let a few drops of the motor oil drip off the measuring stick onto the lug nuts and bolts.
It's not as effective as a squirt of rust remover or a spray can of quick-releasing WD-40, but it's sure better than nothing at all.
Dual Purpose Gun Rack
Put those gun racks in your car to year 'round use.
When hunting season is over the twin gun rack makes an excellent out-of-the-way place to store your two-piece fishing rods and reels, and especially if they are enclosed in zipper cases.
Instant Stove
If you'll carry four three-pound coffee cans and an old grill in your car, you'll have a handy stove.
Fill the cans with sand and place the grill over them.
And if you'll fill a couple of the cans with water instead of sand, you'll have instant warm dishwater.
Simple Utensil Kit
Does your wife store her "good" silverware in a flannel pocket roll?
Why not use the same idea for your camping knives, forks, and spoons? Use heavy canvas and sew up your own utensil kit... then tie it with a shoestring (which might come in handy also).
Pre-Aid Diabhan
Did you ever go camping and find you didn't have a container big enough to use as a diabhan? Dig a hole in the ground and line it with aluminum foil. Emergency pain!
First Aid
If you should happen to get stung by a bee, and have no remedy handy, a little bit of sugar rubbed over the bee-sting will lessen the pain.

PROTECTING AMERICA

Helping The Handicapped
Nearly one out of every eight Americans today is limited in activity by some physical handicap. Many spend much of their time at home and have to live on limited incomes. It is for these, among others, that an attempt is being made to keep television programs free.



Some people may try to siphon off the better TV programs to pay-cable television, where viewers will be charged a monthly fee and additional charges to watch their own TV's at home. Many others, however, agree with the National Congress of Organizations of the Physically Handicapped, which says "The quality of television must not be allowed to deteriorate. Many (handicapped) may be on welfare or a pension with little or no chance of earning more. We object to any possibility that imminent changes would eventually cost us more than our economic circumstances would permit."

According to the Veterans of Foreign Wars, "pay television (could) result in the loss of TV enjoyment by millions of sick, disabled veterans and their dependents, and could have a disastrous effect on morale and well-being."
You can learn more about pay-cable TV by writing for a free booklet to Q & A Booklet, 1771 N Street, N.W., Washington, D.C. 20036.

EDUCATION IS OUR BIGGEST BUSINESS

THINK before you vote!

EDUCATION IS THE BIGGEST BUSINESS IN AMERICA. It has the largest number of owners. The most costly and extensive plants and utilizes the most valuable material—our future generation. It employs our greatest investment in money and time. Its finished product has the greatest influence on both our country and world. If we do not educate, we will perish by our own prosperity.
Do you and I have the same feeling of ownership that we have in our other investments? To sign our proxy is to elect your board of directors who are your school trustees. We elect them to improve the effectiveness, attitudes and potentials of our investment in the future generation.

The only dividends that we can be sure of in life is the part of us that we invest in others. Our investment has a special meaning for us, like in the market place, we are dealing in futures. The future that was left to us was written in our Constitution and Bill of Rights. It was a way to change unethical and corrupt practices that we, as a people, do not like or feel just, or unserviceable. They made it possible for us to do so INSIDE THE ESTABLISHMENT. Each of us owe a debt to man and women of the past for our future.
We now owe a debt to today's children who will inherit our assets and liabilities. The whole business of any generation is to raise its children to responsible citizenship. That task has never been easy, and today, its problems seem boundless. Too many of us have become so occupied in the pursuit of our personal desires that we are neglecting our concern involving the undermining of our local educational system. We do not get to know the views of our school trustees. Whether this is intentional, we should find out.

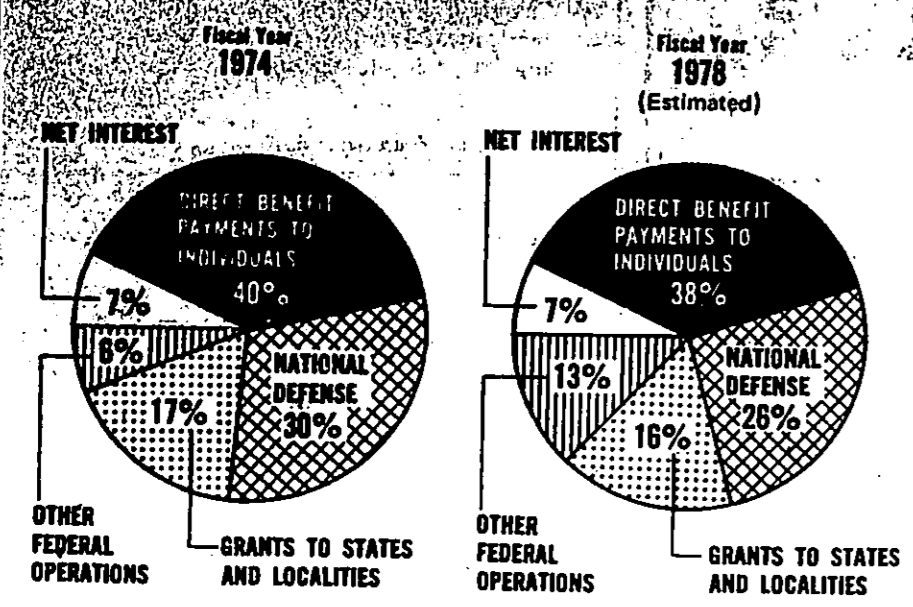
Go to the polls April 2. Vote for the candidates who are not selected by special interests.

Your vote is your proxy
Paid political advertising by Mrs. W. A. Drake, RR 1, Box 96C11, Woodville, Texas

NEW & USED FURNITURE
New Sofa and Chair in Hercules
LIVINGROOM SUITE 149.95
New Table & 6 Chairs
DINETTE SUITE 139.95
Gilson Upright Frost-Free
FREEZER 139.95
Rose's TRADING POST
DAM 8 - 283-8828 - HIGHWAY 190

MORE FOR YOUR ADVERTISING DOLLAR

FEDERAL OUTLAY TRENDS



This chart graphically portrays a percentage comparison of federal outlays for major programs in Fiscal Years 1974 and 1978. Direct benefit payments to individuals continued to be the dominant element of the federal budget.

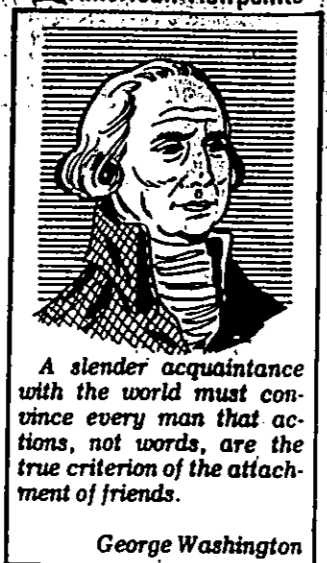
For and about Teenagers

THIS WEEK'S LETTER: I'm 17 years old and in high school. I'm very unhappy with my dating habits. Since I've been in high school, I have constantly dated freshmen...

Eat more often

AUSTIN, Texas (Sp.) - Dr. Donald R. Davis, a University of Texas biochemist, says the elderly need to eat a variety of foods and eat often - at least three times and maybe even four to six times daily.

American Viewpoints



TV tips

SOLID STATE Which is better? A TV with tubes or one that is solid state? The experts at General Electric would like you to understand the difference so you can make an intelligent choice when you're in the market for a new set.

Voice of the People

Mrs. Bertha M. Williams Star Route 1, Box 408 Woodville, Texas 75979 Dear Mrs. Williams: I am replying to your letter of February 26, 1977, concerning the lake levels at the B. A. Steinhagen project.

ELECT E. L. GENE BOYKIN

SCHOOL TRUSTEE POSITION 7 I would like to take this opportunity to remind voters in the Woodville Independent School District that this Saturday, April 2, is election day for school trustees.

I would like to answer a couple of questions some folks have asked. First, I have never resigned from an elected position of trust. Second, I did serve a full three-year term on the Board of Trustees from 1973-1976.



INDIAN DELEGATION VISITS JIM BROWDER - from right to left: Representative Jim Browder, Chief Fulton Battise, superintendent Emmett Battise and Commissioner Jack Stallings.

Oven Meal Is Energy And Time Saver

Often, due to busy schedules, easy-to-prepare meals are a must, particularly in homes with working wives who get home at 6 p.m. and want to have a full-course meal on the table by 7.

CALLING COLLEEN

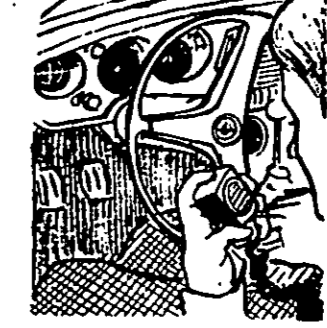
FAMILY ADVICE BY COLLEEN DUDGEON Boyfriend Resentful Of Family Ties

I'm just miserable over a recent breakup I had with my boyfriend and I don't know what to do. We've been going out for almost a year and we have discussed marriage. He's the first man I've been able to trust and I have devoted the past year to making him happy.

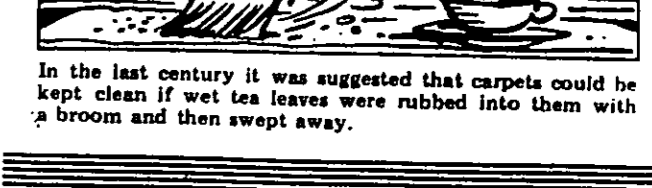
Dear Stuffed: It's often hard to have your cake and eat it too! If Dave doesn't want you to date others and you decide to do it anyway, you'll have to be ready to face the consequences.

Dear Rejected: I respect and admire your devotion to your family. You are luckier than most to be close to them. Your boyfriend is more than likely jealous of the relationship you have with your parents and sisters.

CB's For Safety



Next time trouble strikes on the road, at home or on the water, it might open your eyes to how much help it is to have a good set of "bees," namely a Citizen Band radio says Sparkomatic Corporation.



ELLENDER AMBULANCE SERVICE 283-2406 WOODVILLE, TEXAS

FULL 24 HOUR SERVICE State Approved Vehicles 2 Fully Equipped Emergency Vehicles ADVANCE FIRST AID TRAINING

SAVE THIS NUMBER - IT MAY SAVE YOU Mr. & Mrs. Fred D. Ellender

ADVERTISING: SUBSCRIBE TO THE NEW HERALD TWO WEEKS ONLY \$4.95 PER YEAR. SAVE \$1.00 off yearly rate. SAVE \$3.80 off newsstand price NEW OR RENEWAL.

ADVERTISING: FOOD MART WARREN TEXAS

OUR PRAYERS ARE ALWAYS SUBJECT TO GOD'S WISDOM

THE RESURRECTION PROMISED THE GOOD WORD from the Bible. Some of us thoroughly familiar with the Bible sometimes forget that the pain and suffering of Christ upon earth was intense and real.

ADVERTISING: CHILDRESS MONUMENT WORKS MONUMENTS, MARKERS & MAUSOLEUMS OF EVERLASTING BEAUTY

ADVERTISING: BOYKIN LUMBER Building Materials HIGHWAY 69 SOUTH WOODVILLE

ADVERTISING: ANNOUNCING HICKORY HUT UNDER NEW MANAGEMENT PEGGY and WALTER CHANDLER Sandwiches and Short Orders RECREATION ROOM YOUNG PEOPLES TOURNAMENT POOL FOOSE BALL

ADVERTISING: BUY TWO MARKETS for the price of one! Buy either market and GET THE OTHER ONE FREE! Map showing market locations in the Woodville area.



Our Job Is Pleasing You with...



Advertised
Specials
Friendly
Service

JASPER

"GOOD BUDDY" Special



GOOD VALUE
PEAS OR W.K. GOLDEN CORN
5 \$1
16 OZ. CANS MIX OR MATCH

HEAVY NORTHERN BEEF **BONELESS**

Chuck Roast



79¢

FISH FOR LENT
Perch Fillets FRESH \$1.39
Turbot Fillets FROZEN \$1.19
Snapper Fillets FRESH \$1.89
Flounder Fillets FROZEN \$1.89

Sliced Bacon GOOD VALUE 12-OZ. PKG. 99¢
Lunch Meat GOOD VALUE SLICED REG. OR BEEF BOLOGNA, LUNCHEON OR COTTO SALAMI 12-OZ. PKG. 79¢
Armour Sausage STAR SMOKED, POLISH, RULBASSY OR GERMAN 1-LB. PKG. \$1.59
Beef Franks GOOD VALUE OR MEAT 12-OZ. PKG. 69¢

Quarter Pork Loin ARMOUR VERIBEST 9-11 CHOPS LB. 99¢
Sliced Bologna OSCAR MAYER REG. OR BEEF, THICK OR THIN 12-OZ. PKG. 89¢
Boneless Chuck Steak HEAVY NORTHERN BEEF LB. 89¢
Sliced Slab Bacon ARMOUR QUALITY 1-LB. PKG. 99¢
Rib Pork Chops ARMOUR VERIBEST CENTER CUT LB. \$1.49

OSCAR MAYER
MEAT WEINERS OR BEEF FRANKS
REG. OR 8-PACK 1-LB. PKG. **89¢**

FRESH...NOT LESS THAN 70% LEAN
GROUND BEEF ANY SIZE PKG. LB. **79¢**

Dog Food PET'S CHOICE ASSORTED 6 15-OZ. CANS 99¢

FIRST PICK
VEGETABLES
16-OZ. SLICED BEETS, MIXED VEGS., OR DICED CARROTS; 15 1/2-OZ. SPINACH, CUT GREEN BEANS OR FRENCH GREEN BEANS; 14 1/2-OZ. BLACK EYE PEAS
YOUR CHOICE
4 \$1
CANS MIX OR MATCH

JOY LIQUID 89¢
FOR DISHES 22-OZ. BTL.

Campbell's Soup CHICKEN NOODLE ENGLISH FOR ONE 4 7/8-OZ. CANS \$1.69
Grape Juice FIRST PICK 24-OZ. OR 32-OZ. CRANBERRY OR CRAN-APPLE YOUR CHOICE 69¢
Folger's Instant Coffee 10-OZ. JAR \$1.19
Marshmallows 7/8 MINIATURE FLUFFY 3 10 1/2-OZ. PKGS. \$1

FRESH, QUALITY PRODUCE
U.S. NO. 1
RUSSET POTATOES
LB. BAG **79¢** 5 LB. BAG **59¢**

EX-FANCY DELICIOUS
GOLDEN APPLES
10 FOR **\$1**

D'Anjou Pears NORTHWEST JUICY 3 LBS. \$1
NAVEL ORANGES
SUNKIST SEEDLESS 4 LBS. **\$1**

Calavo Avocados CALIFORNIA CREAMY 4 FOR \$1
SUNKIST TANGERINES
FRESH MINEOLA 3 LBS. **\$1**

RAINBOW IRREGULAR PEARS OR SLICED PEACHES
39¢
29-OZ. CAN

DECORATOR, ASS'T. OR FIESTA
VIVA TOWELS
49¢
BIG ROLL

Pinto Beans GOOD VALUE DRY 3 1-LB. BAGS 69¢
First Pick Oil FOR SALADS OR COOKING 24-OZ. BTL. 79¢
Peanut Butter GOOD VALUE IMITATION SMOOTH OR CHUNKY 2 1/2-LB. JAR \$1.49

GOOD VALUE
DETERGENT
49-OZ. LAUNDRY OR 35-OZ. AUTOMATIC DISHWASHER
YOUR CHOICE **99¢**

THESE PRICES GOOD 7 FULL DAYS THURS.-WED., MAR. 31-APRIL 6

WE GLADLY ACCEPT USDA FOOD STAMPS!



Aluminum Foil FIRST PICK HEAVY DUTY 16" x 25' 75¢ ROLL
Alamo Dog Food 8-LB. BAG \$2.49

BORDEN ASS'T. FLAVORS
ICE CREAM
1/2-GAL. RND. CTN. **99¢**

Sweet Relish HEINZ DELICIOUS 9 1/2-OZ. JAR 47¢
Ajax Detergent LAUNDRY POWDER 49-OZ. BOX \$1.34
Polish Dills WILSON'S KOSHER 32-OZ. JAR 95¢

"GOOD BUDDY" Special
FARM FRESH...GRADE A
LARGE EGGS
DOZ. **69¢**

CHEESE 89¢
MILD, MED. OR SHARP CHEDDAR, BRICK, MOZZARELLA OR MONTEREY JACK 8-OZ. STICK FOR LENT

Sour Cream BORDEN FRESH 16-OZ. CTN. 69¢
Cottage Cheese BORDEN DELICIOUS 16-OZ. CTN. 69¢

YOGURT 89¢
PLAIN OR ASSORTED FRUIT FLAVORS 3 8-OZ. CTNS.

RAINBOW WHITE OR ASS'T.
BATH TISSUE
ROLL PKG. **459¢**

DUE'S **MINIMAX**
JASPER