

Remember Christmas Coloring Contest Deadline Dec. 10

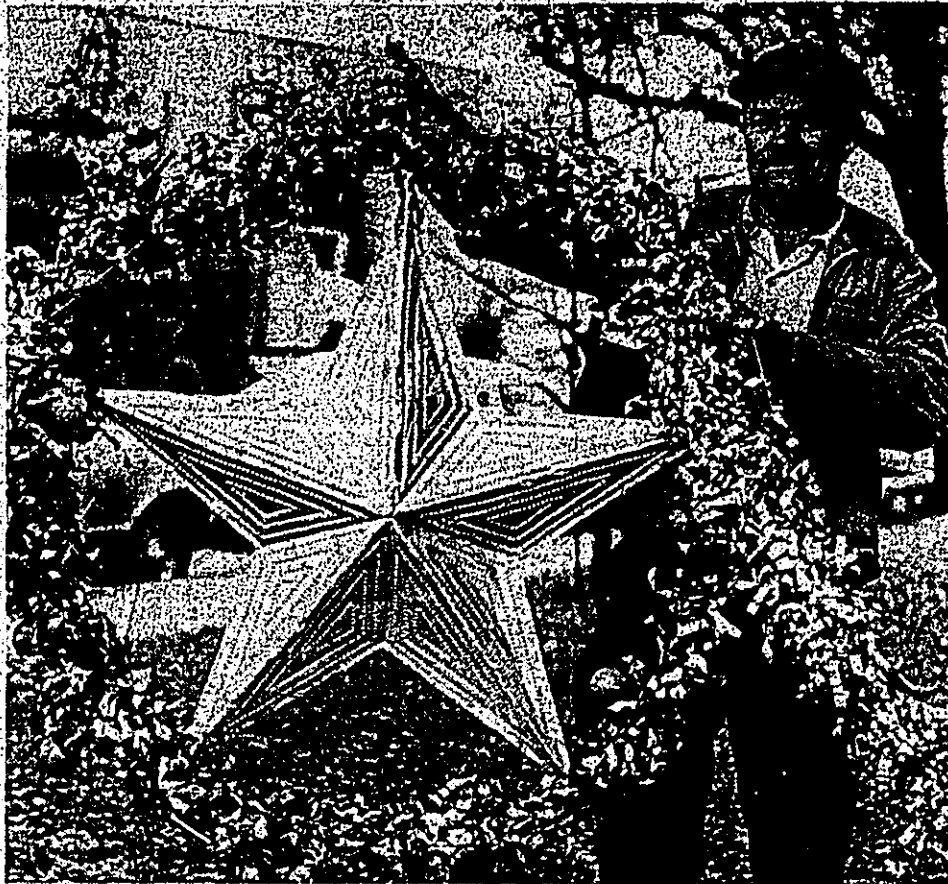
See Nov. 24th Edition of the BOOSTER

Hoag & Sons Book Bindery Inc. Springport, Michigan 49284

The Tyler County

BOOSTER

Serving Tyler County Since 1930
Vol. 50 20 Pages Dec. 8, 1977
No. 49 4 parts Woodville, Texas 75979 15'



In The Mood

Bill Sols puts a little Christmas spirit into the city with this big star, one of many hung from light poles by Gulf State and city employees last week. (Staff Photo)



Grand Jury Indicts Five

The December 1977 term of the Tyler County Grand Jury for the 88th Judicial District was impaneled Monday and handed down five indictments.

Jimmie Voyne Wolf of Hillister was charged with murder in connection with the Thanksgiving Day shooting death of Mrs. Bertha Weaver, also of Hillister.

In another indictment, Earl Pool of Tyler County was charged with unlawful possession of a firearm by a felon.

Two indictments for burglary of a habitat and one indictment for driving while intoxicated, were handed down by the grand jury. Names of those indicted were not available at press time.

Foreman of the grand jury is Sergio Ramos of Woodville. Mrs. Melba Gravemier of Spurger is the secretary.

The remaining members of the grand jury are James F. Johnson and Johnny C. Baker, both of Dogwood Station; Mrs. Sue Davis of Chester; Ruth Houston and Sandy Minyard of Woodville; Lee Bingham and Mrs. Lucille Ramer of Spurger; James H. Brown of Colmesneil; and E.L. Werner and Richard A. Murray of Warren.

CHESTER—All residents of the Chester Independent School District are invited and encouraged to come to the Chester Elementary School at 7 p.m. on Monday evening, Dec. 12, for a tour of the facilities followed by an open general informative meeting concerning a new building program.

It is very important and necessary for all residents of Chester Independent School District to attend this meeting.

Members of Chester PTO will be assisting with the tours of the Chester Elementary School.

EVA Starts Holiday Gift Drive

The Emergency Volunteers Association (EVA) is starting a drive to collect food and other goods for needy persons to be distributed at Christmas.

There are people who should be receiving help that are not, said spokesperson Judy Ellender. Their names are not on the lists for the normal yearly drive. It is these people that we want to help.

Donations of toys, canned goods, clothes or money may be taken to 312 West Bluff in Woodville. For more information call 283-5370.

Bertis Best

C Of C Elects Best

Bertis Best was chosen to lead the Tyler County Chamber of Commerce in voting held Monday at the Chamber office in the Woodville Inn. Chosen as Vice President was Bud Byram. Best is employed as manager of the Jasper Federal Savings and Loan Woodville Branch and Byram owns the Woodville Feed store.

Best predicted an early January directors meeting which was decided, he said, to formulate and establish committees which would result in a program of work for the coming year.

In other action the group formed a committee to make preparation for the upcoming Chamber banquet which will be held January 20 and feature Col. Wilson Sater of the Texas State Department of Safety. As a special form of entertainment DPS Patrolman Jim Deal of Tyler County will perform competitive sharpshooting for the group.

Saint Nick, Spiderman Coming

'Santa Nights' Dec. 15 & 16

Stretching this year into a two night shopping spree holiday extravaganza the Woodville Retail Merchants in a volunteer effort are again sponsoring "Late Santa's Shopping Nights" on Thursday and Friday, Dec. 15 and 16 from 4 till 9 p.m.

This year's events will include more performances by singing groups and special visits by the popular "Spiderman" and "Frosty The Snowman."

All area kids who want to visit Santa Claus and have their pictures made with him should remind their parents that ole Saint Nick will be arriving at the county courthouse square Thursday, Dec. 15 at 4 p.m. on a Woodville fire truck to kick off the shopping event.

Santa is just the beginning of two festive nights as Woodville merchants and musical groups combine to bring area citizens the best in bargains and entertainment.

Benefits to holiday shoppers include money saved by shopping at home. Most downtown merchants will remain open until 9 p.m. each night as a part of the Late Santa's Shopping Nights. For the kids there will be the chance to see Santa or to attend a special show at the Pines theatre. For one can of

food, which will be given to the welfare department, all kids age 14 and under will be admitted to see "Where's Willie" a funny kids show which begins at either 5:30 or 7:30 p.m. showings.

The movie, which stars Kate Woodville is a comedy about an 8-year-old electronics genius running loose in a small Texas town.

Pines Theatre Manager Pat O'Brien said he was delighted to participate in the cooperative merchant effort.

Also on hand will be musical groups from area churches and schools to perform for the public on the courthouse square.

The Tyler County unit of the state Department of Human Resources will also have a booth next to Santa's hut on the northwest corner of the square to collect donations of non-perishable food, money, new clothing or personal items such as toiletries, according to Mrs. Butch Howard, unit adult social service worker. Cold drinks, hot drinks and popcorn will also be served from the booth, with proceeds to go for groceries to round out the Christmas baskets for the county's needy as part of "Operation: Sharing is Caring."

Persons are asked to refer the names of known needy families to the Department of Human Resources for consideration for a food basket.

The Christmas baskets and gifts will be distributed by the Adult Social Services Department. Interested persons should contact Mrs. Howard at the State Department of Human Resources office in Woodville at 283-3714 for specific individual sizes and needs.

Anyone desiring to donate usable toys are used clothing may bring these to the Department, third floor of the courthouse. After the late shoppers nights on Thursday and Friday Mrs. Howard indicated that other donations should be turned over to the Home Health Home Care Inc. offices on 10 Pecan St.

The Woodville C.B. Club will be selling B-B-Q sandwiches, hamburgers and hot links all day Thursday and Friday.

The Warren C.B. Club is also donating cakes for a cake sale. The cakes will be sold whole or by the slice, Mrs. Howard said.

Santa will be on duty till 9 p.m. each night at the Santa's Hut to be photographed with the kids then he'll have to pack up his Christmas wishes and head back to the North Pole on Friday at 9 p.m.

As an added attraction a lighted stage will be installed at the West Bluff intersection of South Charlton Street and in front of the Robishaux corner grocery store located on the corner of Hwy. 190 and Village St. to feature singers who will carol the holiday sounds of Christmas during the five hour shopping spree each night.

The musical aspect of the "Late Santa's Nights" is being coordinated by Kirby High School Band Director Barry Johnson and KVL Radio Station Manager Don Stevenson.

Featured on the program will be the following groups and individuals:

- Kirby High School Band;
- First Baptist Church Youth Choir;
- Revelations;
- First Baptist Church Childrens Choir;
- Mrs. Houstons Fourth Grade Class;
- Melody Makers;
- Academy of Dance to perform two routines;
- Bethel Baptist Church Singers;
- The "no-name" country band with Lawrence Upchurch.

Wanderers to perform Christmas Routine and twist fire.

- Country Singer, Lisa Rice;
- Marilyn Lane to sing "Silent Night" in German;
- The Linda Dancers to perform.

The Male Chorus Spiritual Group.

High intensity lights will brighten up the Christmas carolers on the square and the Corner Store singing area.

Rockland Man Beaten

ROCKLAND—A deaf, mute Rockland man was brutally beaten beside US 69 here Friday in an unprovoked attack by the driver of a blue and white sedan.

Bobby Mitchell, 56, who has been deaf and mute almost since birth, was apparently hitch-hiking to Colmesneil where he often works, when the southbound car pulled off the road.

The driver of the vehicle, which was also occupied by at least four other persons, then got out and hit Mitchell and kicked him as he lay on the ground.

The beating was stopped when J.C. Dickerson, a customer at the nearby May's Grocery, yelled at the youthful attacker, who then got in the car and drove away.

Mitchell was taken to Tyler County Hospital, where he was x-rayed for possible internal injuries, and then released into the care of his step-nephew Cotton Williams of Rockland.

"It must have been somebody who wanted to be a big shot or show-off," said Williams of the attacker. Mitchell, though wearing a patch over one eye, was apparently in improved condition as of Tuesday.

Although a complaint has been filed, no suspects were in custody as of Tuesday.

North Of Colmesneil

Two Die In Accident

COLMESNEIL—A one-car accident four miles north of here on US 69 Saturday morning killed two Diboll women and sent a Diboll man to Tyler County Memorial Hospital with minor injuries.

Dead at the scene were Jean Snarr Martinson, 45, and her mother Mrs. W.J. Snarr, 74. The driver of the car, James Robert Snarr, 35, was taken to the hospital by Ellender ambulance in good condition, according to state trooper Billy Frank Platt Jr., who investigated the accident.

The accident occurred at 9 a.m. as the 1977 Pontiac sedan was southbound on US 69. A witness said that the car went out of control, spun as it crossed over the northbound lane, rolled and dropped 10 feet into a culvert.

The pavement was wet at the time of the accident, but there was no evidence of excess speeding and no skid marks could be found, according to Platt.

Mrs. Snarr was thrown out of the car before it landed in the culvert.

Precinct 2 Justice of the Peace Billie Jean Broom held an inquest at the scene.

WISD To Meet Tuesday

The Woodville Independent School Board of Trustees will meet one week earlier than usual on Tuesday, Dec. 13 for their December regular meeting and are expected to ratify action taken earlier regarding "provisional" bid acceptance from the Hermann Bennett Construction Company of Dallas.

The bid proposal which amounted to a low bid consideration of \$2,498,000 was still to be examined by District Architect Jack Stansbury who will be present for the Tuesday meeting with a recommendation for the board.

Other activity routinely scheduled by the board includes:

- acceptance of the tax collectors report;
- adoption of the November Budget figures and;
- acceptance of the previous meetings minutes.

The W.I.S.D. trustees usually meet on the third Tuesday of each month at the Kirby High Administration Building.

Voting Cards Are Mailed

New voter registration cards for all persons who have been registered to vote in the county for the past two years have been mailed, according to County Tax Collector Assessor Barbara Tolbert.

Due to incorrect addresses and other reasons, some of the cards have returned to Tolbert's office undelivered. Anyone who has not received a new card, and is eligible for one, should contact her office.



Natural Art

Often the best art can be found in a natural setting. Here a spider's web beside Lake Steinhagen is covered with droplets from a morning fog. (Staff Photo)

Rev. Buford Finley

Finley To Address Lions Club

Guest speaker for the Thursday, Dec. 8, meeting of the Woodville Lions Club will be the Rev. Buford W. Finley, pastor of the Woodville United Methodist Church. Rev. Finley will speak on the topic "Let's We Forget" dealing with the American heritage as it stems from the Junior Christian tradition.

A native of Marlin, Rev. Finley received his masters in theology from the Perkins School of Theology at SMU in 1958. Prior to that, he received a BS in accounting and history from Stephen F. Austin University in 1954.

Rev. Finley has previously served as pastor in Trinity, Lone Star, Trinidad, and Lakeland. While at Trinidad, he also was campus minister at Henderson County Junior College and organized a new Methodist Church at Cedar Creek Lake.

The Lions Club will meet at noon Thursday at the Lion's Den.

Finley To Address Lions Club

Guest speaker for the Thursday, Dec. 8, meeting of the Woodville Lions Club will be the Rev. Buford W. Finley, pastor of the Woodville United Methodist Church. Rev. Finley will speak on the topic "Let's We Forget" dealing with the American heritage as it stems from the Junior Christian tradition.

A native of Marlin, Rev. Finley received his masters in theology from the Perkins School of Theology at SMU in 1958. Prior to that, he received a BS in accounting and history from Stephen F. Austin University in 1954.

Rev. Finley has previously served as pastor in Trinity, Lone Star, Trinidad, and Lakeland. While at Trinidad, he also was campus minister at Henderson County Junior College and organized a new Methodist Church at Cedar Creek Lake.

The Lions Club will meet at noon Thursday at the Lion's Den.

Finley To Address Lions Club

Guest speaker for the Thursday, Dec. 8, meeting of the Woodville Lions Club will be the Rev. Buford W. Finley, pastor of the Woodville United Methodist Church. Rev. Finley will speak on the topic "Let's We Forget" dealing with the American heritage as it stems from the Junior Christian tradition.

A native of Marlin, Rev. Finley received his masters in theology from the Perkins School of Theology at SMU in 1958. Prior to that, he received a BS in accounting and history from Stephen F. Austin University in 1954.

Rev. Finley has previously served as pastor in Trinity, Lone Star, Trinidad, and Lakeland. While at Trinidad, he also was campus minister at Henderson County Junior College and organized a new Methodist Church at Cedar Creek Lake.

The Lions Club will meet at noon Thursday at the Lion's Den.

Social Security Benefits Reported

LUFKIN—Social security benefits were being paid to residents of Tyler County at the rate of \$61,097 a month at the start of 1977, according to the Social Security Administration.

Farrell Attends Festival

Cynthia Farrell, Miss Tyler County, attended the 51st annual Christmas Festival in Natchitoches, Louisiana, last week-end. She and her chaperone, Maggie Pryor, attended the Queen's luncheon at the college, where George Peppard, movie star and parade marshal, was a special guest. Cynthia rode in the parade on the float with

AARP 792 Installs Officers

Gordon Gay, assistant state director of the National AARP Chapter #792 on Monday, Dec. 5, installed officers for the coming year. President Rev. Clyde Bennett, Vice-President Tom Kent, Recording Secretary Mrs. Everett Phillips, Corresponding Secretary Mrs. A.T. Lantz, and Treasurer Mrs. C.M. Lovell. Chairman appointed by the board are: Program Rev. Jesse Adams; Publicity Mrs. Blida Coles; Legislative Mrs. J.C. Pate; with committee members: Mr. Ben Foster; Membership Mr. Everett Phillips; Nominating Chairman Mr. H.O. Shepherd; with committee members: Henry Schmitt, Mrs. Gwen Bruck, and Rev. George Youngblood; Community Service Mrs. H.P. Ingardner; Telephone Mrs. Ermine Shepherd. Chaplain will be Mr. C.M. Lovell.

Council On Aging To Meet Dec. 9

LUFKIN—The Aging Advisory Council of the Deep East Texas Council of Government will meet at 1:30 p.m. Friday, December 9, in the Science Building (Room 209 of the Science Building) for the purpose of discussing the expansion of Title VII Projects in the past, emphasizing the need for the Council to be on the increase in planning for the Christmas season. The meeting will be held in the presence of the new board of members. Members are urged to attend and may contact the Jasper DECOG office for further information.

Grand Matron To Visit Woodville

Mrs. Mary Brown, worthy Grand Matron of the Grand Chapter of Texas, Order of the Eastern Star, will make a fraternal visit to Woodville Chapter 462, O.E.S., Tuesday, Dec. 13. Mrs. Brown will be honored with a covered dish supper beginning at 5:30 p.m. at the Magnolia Lodge. A called meeting will follow at 8 p.m. at the Woodville Inn. All members and visiting members are cordially invited to attend by Worthy Matron Madeline Collins and Worthy Patron Jesse Lazenby.

OBITUARY

Arthur Boyd Kincaid

Funeral services for Mr. Arthur Boyd Kincaid, 75, of Warren, will be held Wednesday, December 7, 1977 at 11:00 a.m. at Edwards Funeral Home Chapel with Rev. Fred Burnham officiating. Burial followed in the Hart-Miller cemetery.

Carlie Ellen Franklin

WOODVILLE—Funeral services for Mrs. Carlie Ellen Franklin, 75, of Woodville were held Wednesday, December 7, 1977 at 2:00 p.m. at Edwards Funeral Home Chapel with Rev. Buren Williams and Rev. Dale Carter officiating. Burial followed in the Egypt Cemetery.

Colmesneil News

By LOUELLA MOSELEY
With Thanksgiving holidays in the past, Colmesneil seems to be on the increase in planning for the Christmas season. First Baptist here engaged in the publication of a new book of poems, "In the Garden of Love." This is a collection of beautiful poems, each with a spiritual uplift and an attractive jacket in which is a bridge, trees and flowers, sketched by Barbara Kieckl, a teacher in the Colmesneil School.

Dr. Gary E. Tatum Optometrist

ROOM 107, WOODVILLE INN, Wednesday 9 a.m. - 5 p.m.
GLASSES FITTED 283-3011
REPAIR WORK ON FRAMES
COMPLETE EYE EXAMINATION
Call any weekday for appointment

WANTED

All Types of Fur
Fur Buyer will be in Woodville at Barclay's Texaco, Intersection Hwy. 190 and US 287 each Wednesday from 4:15 p.m. beginning Dec. 7th and throughout the season. We buy green and dry furs of all kinds. Skin: case: all fur (like oppossimus), not open up the middle.

D & W Fur Co.

Childress Monument Works

Is Proud To Announce
The Association Of
Gerald E. Drake (T-Bone)
with the business.

Hillister News

By Mrs. W.G. HAYNES
Mrs. Edna Sotter and Mrs. Loretta Wilson returned to their home in Beaumont after spending several days in the Holiday Pine Lodge Nursing Home after an extended illness. She was a native of Arkansas and had made her home in Woodville for the past 13 years. She was a member of Hampton Baptist Church.

THE HOUSE IS YOURS

Let's insure the mortgage payoff in the event you become disabled. You can't afford not to.

J. W. RAY ASSISTANT GENERAL AGENT

AMERICAN NATIONAL INSURANCE COMPANY
201 N. MAGNOLIA WOODVILLE, TEXAS
Phone: 283-2578
H.E. 937-5559

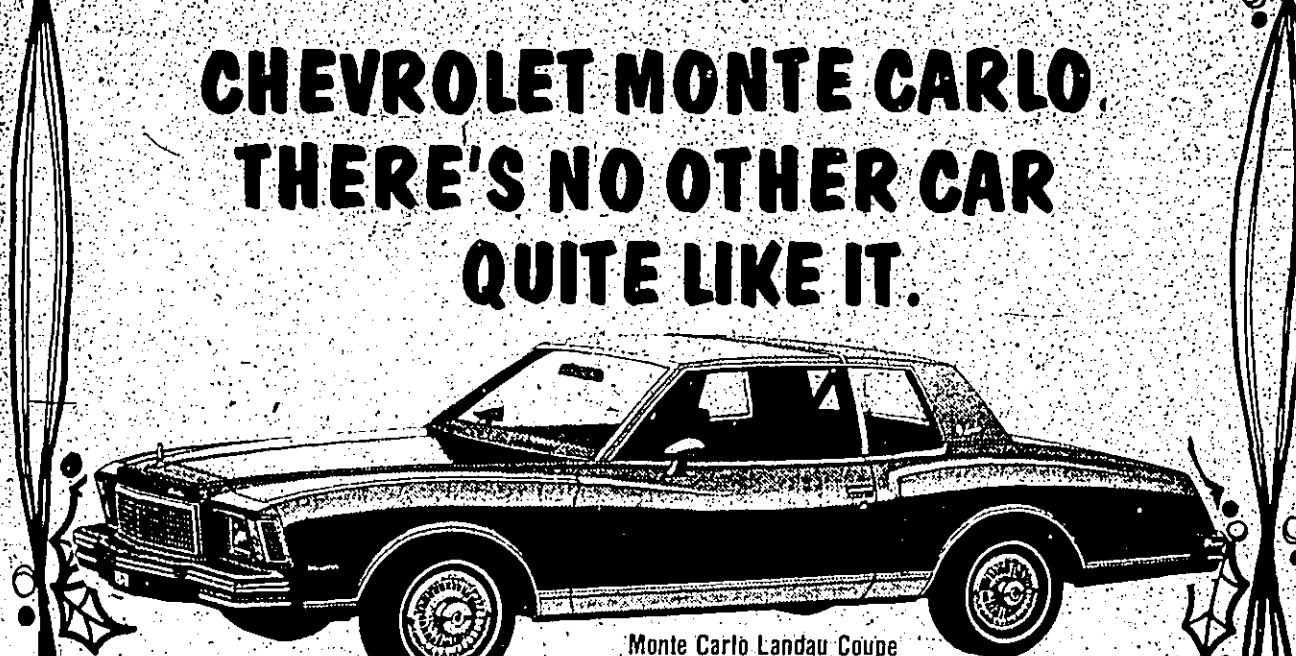
OPEN NITES

Mon - Sat. Till Christmas
• 5¢ GREEN STAMPS
• FREE GIFT WRAP
SHOP IN ALL-WEATHER COMFORT
IN THE FRESH, NEWLY DECORATED
FESTIVE ANGELINA MALL

Here's To A Speedy Recovery

Knigh Rentals, Inc.
Hospital Equipment & Home Health Supply
106 S. Charlton, Woodville
Contact owners: Jim Goiner 283-2134
Tom Knight 283-2163

CHEVROLET MONTE CARLO THERE'S NO OTHER CAR QUITE LIKE IT.



- #### Reasons to buy Monte Carlo
- Traditional Monte Carlo styling with elegant grille, sculptured sides and formal roof.
 - Luxurious plush interiors.
 - Personal luxury at an affordable price.
 - Road-tuned suspension with standard front and rear stabilizer bars and standard steel-bolted radial tires.
 - Full frame construction.
 - More usable trunk room.
 - More interior leg and head room both front and rear.
 - 14 noise isolating body mounts, one-piece headliner contribute to a quiet ride.
 - Reduced turning circle makes it easier to park and more maneuverable in city traffic.
 - Trifly V6 engine standard and 305 Cu. In. V8 available.
- * All comparisons relate to the 1977 Monte Carlo

Ogden Chevrolet, Inc.

KEEP THAT GREAT FEELING WITH GENLINE GM PARTS
Colmesneil, Texas 837-2244

CHRISTMAS Gift CARQUEST Guide

CARQUEST 10-PIECE SCREWDRIVER SET

Now only \$5.95
MONDAYS ARE LADIES' DAYS
1978 CHILTON AUTO REPAIR MANUAL \$6.95
FREE! TUNE-UP SPECIALS
SPORT GRIP STEERING WHEEL COVER \$1.99
CARQUEST TROUBLE LIGHT \$4.98
WAGNER TUNG-SOL SEALED BEAMS \$1.89
ULTRA VINYL 4-PIECE CAR MAT SET \$6.99

MACK'S AUTO PARTS

1015 S. Magnolia
Woodville 283-2635
WE KNOW WHAT YOU MEAN WHEN YOU'RE TALKING PARTS.

FARVIEW BAPTIST CHURCH

Woolville, Billy Holt, Pastor. Sunday School 9:45 a.m., Worship 11:00 a.m., Church Training 6:00 p.m., Thursday GA's and Advers 6:00 p.m.

BEECH CREEK BAPTIST CHURCH

E.C. Hodson, pastor. Sunday School 10 a.m., morning worship 11:30 a.m., Evening worship 7:00 p.m.

TRUE VINE BAPTIST CHURCH

1 mile East of Ocotilla. Sunday School 9:45 a.m., Worship 11 a.m., Lord's Supper, Sunday 6:00 p.m., Monday Mission 4 p.m., Tuesday YVACA 6:30 p.m., Wednesday Prayer Meeting 7:00 p.m.

BETHANY BAPTIST CHURCH

Colmesneil, Texas. Pastor, J. B. Dean. Sunday School 10 a.m., Morning worship 11 a.m., Evening worship 6 p.m., Wednesday Prayer services 6:30 p.m.

ROCKY SPRINGS BAPTIST CHURCH

George Franklin, pastor. Sunday School 10 a.m., Morning worship 11 a.m., Training Union 6 p.m., Evening worship 7 p.m., Wednesday Prayer Meeting 7:30 p.m., Singing, 1st Saturday night of each month, 4th Saturday of each month in Youth Night.

FIRST BAPTIST CHURCH

Warren, Kenneth Cauley, pastor. Sunday School 9:45 a.m., Morning worship 11 a.m., Church training 6 p.m., Evening worship 7 p.m., Wednesday Prayer Meeting 7:30 p.m., Singing, 1st Saturday night of each month, 4th Saturday of each month in Youth Night.

NEW SHILOH BAPTIST CHURCH

West of Woodville. Pastor, L. A. Smith. Sunday School 9:45 a.m., Morning worship 11 a.m., Evening worship 6:30 p.m., Wednesday Prayer Meeting 7:00 p.m.

ROCKLAND BAPTIST CHURCH

Rev. Ken Frelund, pastor. J.B. Dean, Minister. Sunday School 10 a.m., Worship Services 11:00 a.m., Evening worship 6:00 p.m., Midweek Prayer Services Wednesday 7 p.m., Baptist Men meet every first Thursday 7:00 p.m.

PLEASANT VALLEY BAPTIST CHURCH

C.S. Reed, pastor. Song Service 10:30 a.m., Morning worship 11:00 a.m., 3rd and 5th Sunday, Dinner on grounds 5th Sunday in October, music director.

FIRST SHILOH CHURCH

Services every 1st, 3rd and 5th Sunday in month. Bro. Ernest Martin, Pastor. Services begin at 10:45 a.m. promptly. Mid-week prayer services Wednesday 7 p.m. to 8:30 p.m., Everyone welcome.

KATY BAPTIST CHURCH

Colmesneil Sunday school 10 a.m., Worship Service 11 a.m., Evening worship 6:30 p.m., Wednesday Prayer meeting, 7:30 p.m., Church Training, Pastor.

CALVARY BAPTIST CHURCH

Rev. Jerry Dean, Pastor. Sunday School 9:45 a.m., Morning Worship 11 a.m., Training Union 6 p.m., Evening worship 7 p.m., Wednesday Prayer Meeting 7:00 p.m.

FIRST BAPTIST CHURCH OF HILLISTER

Henry Sontles, pastor. Sunday School 9:45 a.m., Morning worship 11 a.m., Training Union 6:00 p.m., Evening worship 7:00 p.m., Wednesday Prayer Meeting 7:00 p.m.

EBENEZER BAPTIST CHURCH

Sunday School 10 a.m., Worship 11:00 a.m., Evening worship 6:00 p.m., Wednesday evening worship 7:00 p.m., Pastor Lloyd Matthey.

NEW HOPE BAPTIST CHURCH

5 miles east of Warren. Pastor, J.B. Dean. Sunday School 10 a.m., Morning worship 11 a.m., Church Training 6 p.m., Wednesday services 7 p.m.

PLEASANT HILL BAPTIST CHURCH

Spurger, Pastor. Rev. Carl Hadman. Sunday School 9:45 a.m., Morning worship 11 a.m., Evening worship 6 p.m.

J.B. Best & Co.

Clothing and Shoes for the Family

The Tyler County BOOSTER

Davis Food Market

547-3339 Warren

Woodville Convalescent Center

283-2555 102 N. Beach

Ogden Chevrolet

Colmesneil 837-2244

McClure Furniture

283-2519 Woodville

Southeast Texas Savings & Loan

CITIZENS STATE BANK

100 N. 10th Woodville, Texas 75797

It's worth the wait

It is fun to get out and romp with our children, to share in their joy. Sometimes it is even worth to put them on a sled. Afterwards you may be tired and bones and muscles ache, but you think fondly of the laughter and squeals of delight with the love that shines in their eyes. Then you think it's all worth the effort, for they will be young forever, and someday you will only have memories.



WOODVILLE MISSIONARY BAPTIST CHURCH

Lloyd Smith, Pastor. Sunday School 10 a.m., Morning worship 11 a.m., Bible study 6 p.m., Evening worship 7 p.m., Wednesday Prayer Meeting 7:00 p.m.

MIDWAY MISSIONARY BAPTIST CHURCH

FM 190, 7 miles east of Warren 6 miles West of Fred. Rayburn. Pkwy. Sunday School 9:45 a.m., Morning worship 10:45 a.m., Training service 5:30 p.m., Evening worship 6:30 p.m., Wednesday Prayer Meeting 7:00 p.m.

CANEY CREEK BAPTIST CHURCH

G.M. Standley, pastor. Sunday School 10 a.m., Morning worship 11 a.m., Church Training 6 p.m., Evening worship 7 p.m., Wednesday services 7 p.m.

HEBRON BAPTIST CHURCH

FM Road 2827-5, Miles South of Warren on 427 West of FM 2827. Sunday School, 9:30 a.m., Morning worship, 11:00 a.m., Evening Service 6:30 p.m., Pastor Henry Davis.

SUNSET MISSIONARY

283, Warren. Pastor. Sunday 10:30 a.m.

ST. PAUL'S EPISCOPAL CHURCH

Hwy. 190, Sunday services 8:30 a.m. and 10:30 a.m.

METHODIST

SPURGER UNITED METHODIST: Pastor, Eric Williams. Sunday School 9:45 a.m., Morning worship 11 a.m., Evening worship 7:30 p.m.

WOODVILLE UNITED METHODIST CHURCH

Barney Finley, pastor. Sunday School 9:45 a.m., Morning worship 10:30 a.m., UMW meeting 5:30 p.m., Evening worship 7 p.m.

CHESTER MOUNT HOPE UNITED METHODIST CHURCH

Chester, Rev. Jesse Adams, pastor. Worship services 11 a.m., Evening worship 6 p.m., Church school 10 a.m., Bible Study 7 p.m., Youth Wednesday-Mt. Hope Service 11 a.m. (Fourth Sunday).

WARREN UNITED METHODIST CHURCH

Rev. Richard Burnham Minister. Sunday School 10 a.m., Morning Worship 11:00 a.m.

CHURCH OF JESUS CHRIST OF LATTER DAY SAINTS

CHURCH OF JESUS CHRIST OF LATTER DAY SAINTS, Woodville. First Sunday 9 a.m., 2nd Sunday 10:30 a.m., Sacrament meet 5:30 p.m., presented by Noah Lee Crosby.

WARREN UNITED PENTECOSTAL CHURCH

Sunday school 10 a.m., Sunday night Evangelistic Service 7:30 p.m., Wednesday night services, 7:30 p.m., Pastor Vernon W. Odum.

HILLISTER ASSEMBLY OF GOD

Rev. D.K. Martin, pastor. Sunday School 10 a.m., Worship service 11 a.m., Young People's service 6 p.m., Evening Worship 6:30 p.m., Thursday Bible Study 7 p.m.

SHADY GROVE ASSEMBLY OF GOD CHURCH

West of Woodville. Sister Lela Brown, Pastor. Sunday School 10 a.m., Evening worship 6:30 p.m., Wednesday service for youth 7 p.m.

ASSEMBLY OF GOD, R.C. Tilley, Pastor.

Sunday School 9:45 a.m., Morning worship 11 a.m., Evening worship 7 p.m., Wednesday Bible Study 7 p.m.

CHESTER BAPTIST CHURCH

Chester, Pastor, Barney Bryant. Sunday School 9:45 a.m., Worship hour, 10:45 a.m., Training Union 6 p.m., and evening worship 7:00 p.m., Adult Choir 8:15 p.m., Wednesday 7 p.m., Pastor Ron Walling, Monday after school.

FIRST BAPTIST CHURCH OF COLMESNEIL

Sunday school 10 a.m., Worship Service 11 a.m., Church Training 6 p.m., Evening worship 7 p.m., Wednesday YVACA 6:30 p.m., Prayer Meeting 7 p.m., Pastor Ron Walling.

EMON BAPTIST CHURCH

4 miles east of Chester on Hwy. 1745. Larry Trent, pastor. Sunday School 9:45 a.m., Morning worship 11 a.m., Evening worship 6 p.m., Bible study 6 p.m., Evening worship 7 p.m., Everyone is welcome.

BETHEL BAPTIST CHURCH

Warren John Spantanos, pastor. Sunday School 9:45 a.m., Morning worship 11 a.m., Youth Choir 5:15 p.m., Training Union 6 p.m., Evening worship 7 p.m., Adult Choir 8:15 p.m., Wednesday YVACA 6:30 p.m., 8 GA's 6:30 p.m.

FIRST BAPTIST CHURCH OF SPURGER

Emis Kirkland, pastor. Sunday School 9:45 a.m., Morning worship 11 a.m., Church Training 6 p.m., Evening worship 7 p.m., Midweek worship on Wednesday 7:30 p.m.

FIRST BAPTIST CHURCH OF DOUGLASS

Rev. Jack Meyard, pastor. Sunday School 9:45 a.m., Morning worship 11 a.m., Church Training 6 p.m., Evening worship 7 p.m., Wednesday Prayer meeting 7 p.m.

HARMONY BAPTIST CHURCH

Dale Carter, pastor. Sunday School 10 a.m., Worship Service 11 a.m., Evening worship 6 p.m., Wednesday Services 7 p.m.

CATHOLIC

OUR LADY OF THE PINES CATHOLIC CHURCH. Rev. Earl Muldoon, Pastor, 1623 Pine St. Hwy. 287. Sunday Mass 8:30 a.m., Monday Communion 7:30 a.m., Wednesday Mass 6:30 p.m., Wednesday thru Friday Mass 7:30 a.m.

CHRISTIAN CHURCH

FIRST CHRISTIAN CHURCH (Disciples of Christ), Jacke Bennett, Minister. Sunday School 10 a.m., Morning worship 10:45 a.m., other meetings as announced.

CHURCH OF CHRIST

WOODVILLE CHURCH OF CHRIST. Hwy. 190 west, Sunday bible school 10 a.m., Morning worship 11 a.m., Evening worship 6 p.m., Wednesday Bible study and worship 7 p.m., Everyone is welcome.

WARREN CHURCH OF CHRIST-FM 1943 East

Sunday Bible class 9:00 a.m., Morning Service 10 a.m., Evening Service 5:00 p.m., Wed. Bible Class, 7:30 p.m., Rev. Bruce S. McMiller 547-3202.

APOSTOLIC TABERNACLE

A United Pentecostal Church, Rev. Nathan E. Dugree, Pastor. Sunday school 10 a.m., Evening services 7:30 p.m., Wednesday Bible Study 7:30 p.m.

LUTHERAN

ST. PAUL'S LUTHERAN CHURCH. Serving Tyler, Jasper, Garrettsville and other churches in the area. Hwy. 190 West of Jasper at Hwy. 63. Church begins at 10:15 a.m., Sunday School 11:15 a.m., Rev. W.E. Meyer, pastor.

NON-DENOMINATIONAL

ROCKLAND REVIVAL CENTER, Rockland, Texas. Rev. Kibbe L. Cowart, Pastor. Services Thursday night 7:30 p.m., Sunday morning worship 10 a.m.

HAMPTON FULL GOSPEL CHURCH

Rev. James T. Loving, pastor. Services: Sunday School 10 a.m., Morning worship 11 a.m., Sunday Night 7 p.m., Thursday night 7 p.m., 2 miles west of Chester on Hwy. 227.

205 S. Magnolia 283-2550

North South West
Magnolia Drive-In Grocery
Jack Lane Ford
Jack Lane, Pres. 283-2526
104 Pine St., Rev. 283-2716

Brookshire Bros.

Woodville

Woodville Inn

"Woodville's Finest"
Noon Buffet Daily Everyone Welcome

A & M Motor Co., Inc.

283-2534 Woodville

Harrington Electric & Plumbing Service

Colmesneil

Bookkeeping - Tax Service

Bill Busby 547-3120

CHURCH OF CHRIST SERVICES

Bible Study 9:45 a.m.
Worship 10:30 a.m. & 6 p.m.
604 Pine St., 283-5402, Woodville

Remember the sabbath day, to keep it holy.

"Remember the sabbath day, to keep it holy. Six days shalt thou labour, and do thy work: but the seventh day is the sabbath of the Lord God: in it thou shalt not do any work, thou, nor thy son, nor thy daughter, thy ox, nor thy ass, nor thy maldservant, nor thy cattle, nor thy stranger that is within thy gates: for in six days the Lord made heaven and earth, the sea, and all that in them is, and rested the seventh day: wherefore the Lord blessed the sabbath day, and hallowed it" (Exodus 20:8-11).

The Old Testament law (including the ten commandments) was nailed to the cross; "Blotting out the handwriting of ordinances that was against us... took it out of the way, nailing it to his cross. Let no man therefore judge you in meat, or in drink, or in anything, say new moon, or of the sabbath days..." (2:14-16). Here Paul states that Jesus had nailed something to his cross, and that the Law of Moses was nailed to it with his blood. The Law of Moses was not nailed to the cross from its own obligations. A part of the obligation had to do with the sabbath. No man could judge another in respect to its observance as was done in Nehemiah 13:15-22. Otherwise men could today be condemned, as these were, for not keeping God's regulations in Exodus 20:9-11.

The fact that the Old Testament was nailed to the cross does not leave us without law for men are under law to Christ. We keep in mind that since the Law of Moses was nailed to the cross, we are not under the Law of Moses, but we are in one body (Eph. 2:13-16), the body of Christ, which we today govern by the Law of Christ (Heb. 11:2). The Law of Christ is the Law of Love, as stated by Jeremiah (31:33-34) and spoken of in Heb. 8:13 as having taken place. Neither Jew nor Gentile is required to keep the sabbath day since it is not a part of the Law of Christ.

Jesus rose from the dead on the first day of the week (John 20:1). The church of Christ has its beginning on the first day of the week. (Acts 2:1-47). Pentecost always fell on the day after the seventh sabbath after Passover, which would be the first day of the week. The disciples met to break bread on the first day of the week (Acts 20:7) and at the same time they laid by in store II Cor. 16:12).

God requires men to worship Him in spirit and truth (John 4:24). Since we are to worship Him in spirit, rather than in Moses, the first day of the week is the day for Christ's disciples to break bread. Inspired men never called the first day of the week the "Christian sabbath."

Send your Bible questions to Glenn Melton, 306 N. Beach Woodville, Tx. 75797, ph. 283-5402.

THE TYLER COUNTY BOOSTER'S SCHOLASTIC NEWS PAGE

Compiled by Scholastic News Page Editor Novella McCullough

COLMESNEIL - CHESTER - SPURGER - WARREN - WOODVILLE

CHESTER

JACKET JIVE by C.H.S. Seniors

WILD GAME SUPPER Thursday, Dec. 1, the FFA sponsored a Wild Game Supper. The menu consisted of baked beans, potato chips, bar-b-que venison, racoon, squirrel, rabbit, and even some omeppum and Rattle snake.

WARRIORS WIN TOURNAMENT

WARREN - After several close calls, the Warren Warriors coasted to the championship of the Warren Tournament over Kirbyville.

WARREN

WARREN - After several close calls, the Warren Warriors coasted to the championship of the Warren Tournament over Kirbyville.

WARREN

WARREN - After several close calls, the Warren Warriors coasted to the championship of the Warren Tournament over Kirbyville.

SPURGER

WHS Meets Association Criteria

By ROBBY EASON WHS has met the criteria for being accepted into the Southern Association of Secondary Schools and Colleges.

TOMAHAWK TALK by Robby Eason

Typist who received honorable mention were Kevin Nixon, Bob Jenkins, Greg Thompson, and Paul Stagers.

WARREN

WARREN - After several close calls, the Warren Warriors coasted to the championship of the Warren Tournament over Kirbyville.

WARREN

WARREN - After several close calls, the Warren Warriors coasted to the championship of the Warren Tournament over Kirbyville.

SPURGER

Karen Bennet Pirates Deck John Ramer

Hi everybody - Welcome back to the Pirate's Deck. We have lots of news for you this week so pull up a chair and read on.

WARREN

WARREN - After several close calls, the Warren Warriors coasted to the championship of the Warren Tournament over Kirbyville.

WARREN

WARREN - After several close calls, the Warren Warriors coasted to the championship of the Warren Tournament over Kirbyville.

WARREN

WARREN - After several close calls, the Warren Warriors coasted to the championship of the Warren Tournament over Kirbyville.

WOODVILLE

CHS Spotlight: Mr. Jimmy Hanks

One of our several new faculty members this year is Mr. Jimmy Hanks. Mr. Hanks is no newcomer to this area.

BULLDOG MOVES by Dawn Bolt

FAREWELL Gina Pickens, an excellent and assistant to the secretary, has accepted a job in Bryan.

WARREN

WARREN - After several close calls, the Warren Warriors coasted to the championship of the Warren Tournament over Kirbyville.

WARREN

WARREN - After several close calls, the Warren Warriors coasted to the championship of the Warren Tournament over Kirbyville.

WOODVILLE

If I Had A Million Dollars

By NOVELLA McCULLOUGH I would pay all of my family bills and donate some to my church.

KIRBY CORNER Karen Collier's

Several Kirby high and high school band students are preparing for the All-Region band contest.

WARREN

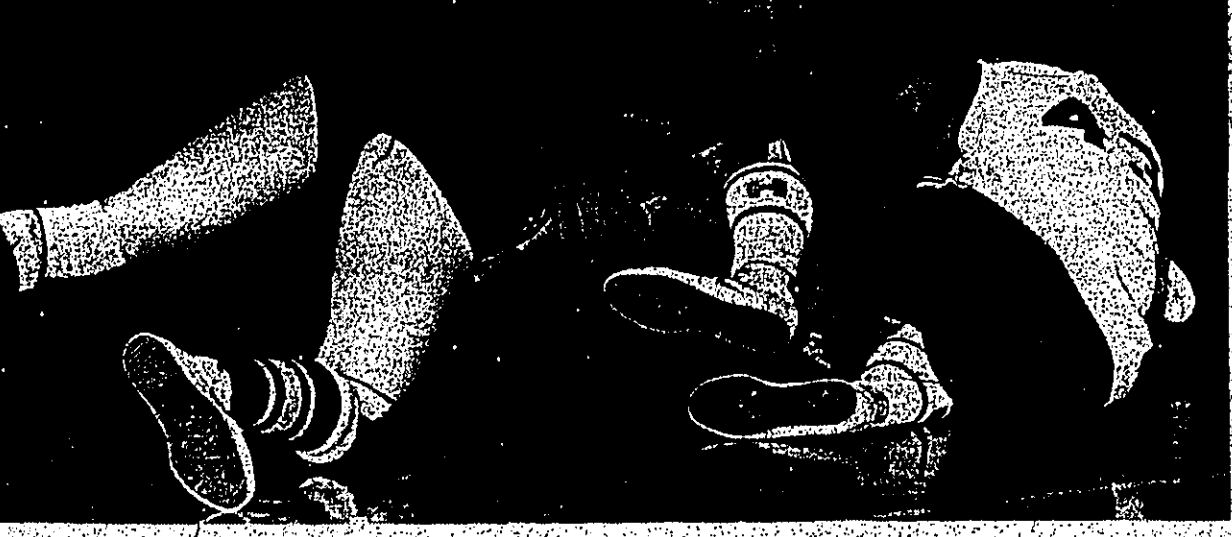
WARREN - After several close calls, the Warren Warriors coasted to the championship of the Warren Tournament over Kirbyville.

WARREN

WARREN - After several close calls, the Warren Warriors coasted to the championship of the Warren Tournament over Kirbyville.

Warriorettes Win Tournament

WARREN - After several close calls, the Warren Warriorettes coasted to the championship of the Warren Tournament over Kirbyville.



Warren players Kay Freeman and Bonnie Rhodes during their game which Warren won Friday.

KHS Loses Fifth Straight Leggett Outlasts Eagles

Leggett dropped Woodville, 26-20, here Monday night to end the Eagles to their fifth straight defeat of the still young basketball season.

Spurger Girls Win Consolation

EVADALE - The Spurger girls won the consolation title at the Evadale Tournament.

Bass Club Holds Tournery

By MIKE STACY On December 3 & 4, the Woodville Bass Club held its twelfth and final 1977 club tournament.

Wheat Girls Win

The Wheat Junior High girls basketball team is off to a good start.

Warriors Finish Third In Tournery

WARREN - Behind a couple of second round comebacks, the Warren Warriors fought their way to a third place finish.

WARREN

WARREN - Behind a couple of second round comebacks, the Warren Warriors fought their way to a third place finish.

WARREN

WARREN - Behind a couple of second round comebacks, the Warren Warriors fought their way to a third place finish.

WARREN

WARREN - Behind a couple of second round comebacks, the Warren Warriors fought their way to a third place finish.

WARREN

WARREN - Behind a couple of second round comebacks, the Warren Warriors fought their way to a third place finish.

WARREN

WARREN - Behind a couple of second round comebacks, the Warren Warriors fought their way to a third place finish.

WARREN

WARREN - Behind a couple of second round comebacks, the Warren Warriors fought their way to a third place finish.

WARREN

WARREN - Behind a couple of second round comebacks, the Warren Warriors fought their way to a third place finish.

SAVE LIKE THE DICKENS with Our Best Buys!

Christmas Trees

Choose the size which best fits your space at the season's best prices.

VALU AT A BUDGET PRICE!

STEAM & DRY IRON

Knife Sets

Utility Table

Weather Instrument

SPECIAL NOTICES

New shipment of fruit & pecan trees, flowering shrubs, rose bushes, Christmas cactus & poinsettias.

We have a new project now!

Grimes Greenhouse and This Old House B-B-Q

Bird Feeders

Irwinware Gifts

Sullivan's Hardware

Open Mon. - Sat. until 5:30 p.m. Closed Sunday. Phone 978-1111

12-B All-District Players Selected

EVADALE—District 12-B football champions, Evadale, dominated the all-district teams named here last Wednesday as the Rebels placed 10 men on the first team and six on the second squad.

Colmesneil, the district runner-up, also placed second in all-district selections as eight Bulldogs made the first team and five were chosen for the second team.

Chester ended up with two first team selections and three second team players.

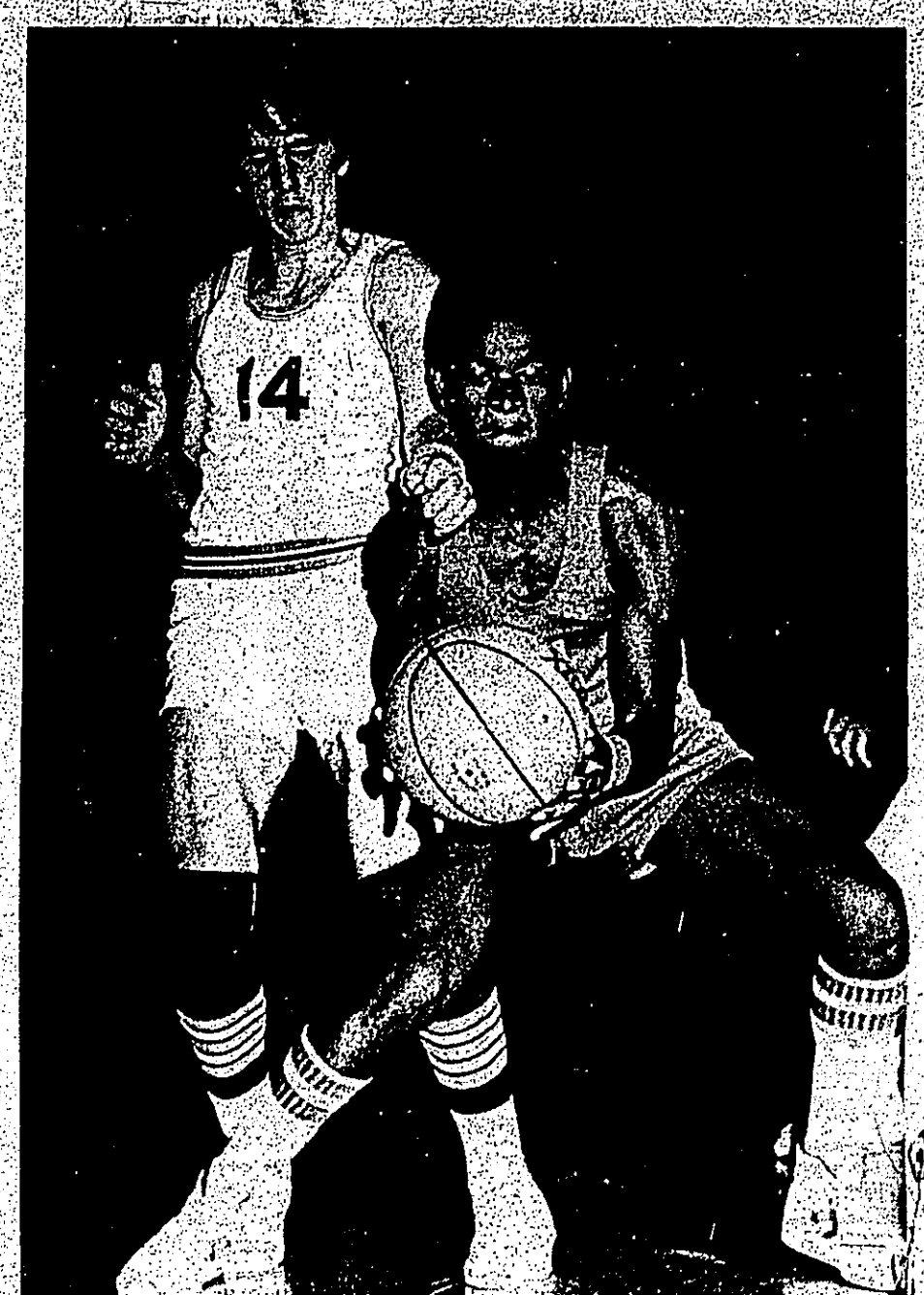
Two Colmesneil players made the first team on both offense and defense. Senior Jeff Moffett was selected at both "defensive back" and quarterback, while senior Barry Cramer made the team as a defensive back and senior back Terry Graham as a defensive back and senior offensive guard.

Senior offensive guard Bradley Spivey, and senior defensive back Blake Payne were Chester's two selections to the first team.

Colmesneil placed senior guard Steve Daniels, sophomore split end Thomas Deason and senior back Terry Graham on the second team offense. The "Yellow Jackets" junior tackle Dwight Cherry and junior back Wayne Hubert also made the second offensive unit.

On defense, Deason and fellow sophomore Kevin Davis were chosen as backs, along with Chester's Rusty Barfield.

The all-district teams were chosen by the vote of the district's coaches. Each coach cast a vote for each position, but could not vote for a member of his team. The player receiving the highest number of votes made the first team, while the runner-up made the second team.



Watch That Arm!

Warren's Clint Hatton has larceny on his mind as he reaches over the shoulder of a Corvair-Camden defender during their game last Thursday. Hatton sparked a comeback as the Warriors won, 63-60. (Staff Photo)

Colmesneil Runnerup

EVADALE—Colmesneil's boys basketball team captured second place in the Evadale Tournament here Saturday after a narrow loss to the host Rebels.

The Bulldogs had a 10-0 lead in the first 10 minutes of the game, but missed. Nevertheless, Robert Glider led Colmesneil with 25 points in what was otherwise a defensive struggle.

Glider led the Dogs in scoring in all three tournament games and was the only Colmesneil player named to the all-tournament team.

Colmesneil began the tourney with a 38-55 overtime win over Sulphur on Thursday. Three Bulldogs hit in double figures, as Glider scored 22 points, Barry Cramer hit for 16 and Thomas Deason got 10.

Friday, the Bulldogs beat Tyler County for Spurger, 48-42, as Glider split the nets for 22 points and Cramer had 18.

Going into Tuesday night's game at Spurger, the Bulldogs were 4-3 for the season.

Last Tuesday, 17-2A power San Augustine handed Colmesneil its second loss of the season.

Thursday through Saturday, the Bulldogs will be participating in the Big Sandy Tournament. Next Tuesday, they will host Spurger.

McGinty Tyler JC Coach

TYLER—Former Kirby High School coach Charlie McGinty has accepted the head coaching position at Tyler Junior College.

McGinty was athletic director and head coach at Kirby High School from 1960 to 1972. For the past five years he has been employed by the Sheldon Independent School District at E. High School.

Along with his wife Jackie and son Troy Dean, McGinty will be moving to Tyler in the near future. The McGintys also have three daughters who graduated from KHS.



Charlie McGinty

World's Finest Water Pump



Pargas
311 S. Magnolia
Woodville
283-2578

It's OUR Policy To Protect YOUR Family

As your family grows... do your insurance needs. We can help you plan sensible, low-cost coverage for every need... now and for the future.

Feagin Insurance
283-2242
912 W. Bluff Woodville, Texas

Ray's Auto Electric

Alternators • Starters • Generators
All Domestic & Foreign Cars Farm Equipment

Ray Sez: The best thing about the future is that it comes one day at a time!

283-2280
715 S. Magnolia Woodville Ray Yosko Owner

CART AWAY FOOD SAVINGS from Grammer's Grocery

283-2520 1403 W. Bluff Woodville

DEC. 8-9-10

Asst'd Cozy Kitchen Cakes.....	1.59
2# French Fries.....	.69¢
Lge. Size Cool Whip.....	.99¢
8# Bag Potatoes.....	.99¢
1# Solid Marg.....	.43¢
Yams...lb.....	.29¢
16 oz. Best Maid Sandwich Spread.....	.59¢
Asst's Jello.....	5¢/1.00
8# Bucket Mrs. Tuckers Shortening.....	1.85
5# Lt. Crust Flour.....	.89¢
Lge. Clabber.....	.75¢
5# sugar with 17.50 Purchase.....	.69¢
8 oz. French Black Pepper.....	1.85
2# oz. Hunts Whole Tomatoes.....	.75¢
12 oz. Niblets Whole Kernel Corn.....	.39¢
Happy Cut Tack.....	.2/75¢
Hornfield Field Peas.....	.2/5¢
4 Roll Soft & Pretty Tissue.....	.99¢
30 oz. Fruit Cocktail.....	.75¢
20 Pk. Styro. Cups.....	.45¢
Sun-Spun Dishwasher Deterg.....	1.19
Market Specials	
Sliced Rindless Bacon...lb.....	1.49
Small 3 & Down Pork Ribs...lb.....	1.29
End Cut Pork Chops.....	1.19
Fresh Pan Sausage...lb.....	1.39
Eckrich Smoked Sausage...lb.....	1.49
Loose Weiners...lb.....	.89¢
Decker Whole Ham 16-19#...lb.....	1.19
Veal Cutlets...lb.....	2.09
Rump or Pike Peak Roast...lb.....	1.39
Chuck Steak...lb.....	.79¢
Fryers...lb.....	.43¢
gunmo Bologna...lb.....	.89¢

Residential Building Booms

BY ALAN MILLER

New residential construction continues to boom, where there may be uncertainty in many areas of our national economy, but families are laying out hard cash in near record numbers to purchase new homes and remodel existing ones.

Temple-Eastex, Retail yard division manager Bert Lindsey says "the housing market in Houston defies description." He reports not only new homes, but huge apartment complexes are under way, and with the area's population expanding at more than 2,000 new families every month, demand continues strong.

Statistics indicate that American families are putting more of their spendable income into housing than ever before.

Would look like a sound investment from our side of the fence.

Where else will your original investment appreciate so greatly?

Existing home values have been appreciating at ten per cent per year ever since 1970, outpacing inflation by a good margin, and certainly outpacing a dismal stock market.

Those who aren't opting for a new home are spending more than ever before in total dollars adding rooms and "modernizing" existing homes.

Monied pent in this area have sent new records this year, and the drive to conserve energy should keep the market strong in the months ahead, as homeowners opt for additional insulation, roofing and other energy savers.

Heartening too, is the huge increase in non-residential construction, as commercial and industrial construction, outlays increase. This is an added cushion that should buttress activity in the building materials industry in the months ahead.

As is always evident in a strong housing economy, the ripple benefits have a positive effect in other areas of the business community.

More furniture and appliances are purchased, plumbing, glass and flooring industries are looking at better times.

But most importantly, is the positive attitude many Americans are taking toward their future. An investment in a home is usually the largest single purchase any of us undertake in our lifetime, and despite the "light" prices we face, we still recognize it as a wise investment as well.

Stop this truck!

It contains Wayne 32% Lique-Balancer and will provide your cows, heifers or steers with everything they need that roughage or pasture alone can't provide.

WAYNE LIQUE-BALANCER

Not all liquid supplements are alike—for instance, Lique-Balancer contains chelated trace minerals—a special process which bonds important trace minerals closely with the Protein so they can be transported through the rumen to the lower digestive tract where they are absorbed in a form that cattle can use.

Wayne Lique-Balancer can be fed to cattle on pasture or range; being wintered on hay or corn silage or when they are grazing stalk fields.

So why not stop the Wayne lank truck soon and let us show you how Wayne Lique-Balancer can give your animals quality nutrition. And our service save you time and labor.

Woodville Feed & Supply
E. Bluff 283-5224

Callis Attends Seminar

Margaret Callis of Woodville recently attended a seminar on the campus of Oral Roberts University in Tulsa, Okla. Nearly 5,000 persons from across the United States and Canada were guests of the University for the 4-day event.

Featured speaker for the seminar was ORU founder and president Oral Roberts. Roberts, the World Action Singers, and Reflection, reggae acts on the Oral Roberts half-hour weekly programs and 1-hour prime-time quarterly television specials, performed for seminar guests.

The seminar was one of several held on the campus this year. In addition to seminar guests, some 175,000 persons tour the campus each year. ORU is Oklahoma's number one tourist attraction, according to the Tulsa Chamber of Commerce.



Accepts Prize

Woodville Business and Professional Womens Club President Mabel Uley presents David Letkovits of Woodville with the Windberg print he won as a door prize at the Big Thicket Arts and Crafts Fair last Saturday. The print was custom framed by Henry Shettles of Hillister, who also donated two other prizes to the fair. (Staff Photo)

Holiday Decorating Can Be Fun

COLLEGE STATION—Holidays provide an excellent opportunity for creative people to decorate their homes for the holiday season.

HOLIDAY THEME—Selecting a holiday theme might be religious, country, modern, or an "old-fashioned" Christmas.

MISS MOORE, of the Texas Agricultural Extension Service, The "Texas A&M University System."

Spending a lot of money on "new" decorations is not necessary to create this year's holiday look, either, the specialist says.

New ideas and color combinations can start with adapting decorations already on hand.

"On-hand" items can become fabric or ribbon bows, or lined made from popcorn or colored paper rings to carry out an effective country look, plus fabric scraps onto plain styrofoam balls, include a velvet ribbon at the top, and hang it on the tree with a bobbin or "mount" them with white thread and thumbtacks.

COLOR SCHEME—In holiday color scheme, first consider the existing background colors of walls, carpets and upholstery. Also, take the style furnishings into consideration. Then select one or two harmonizing or contrasting colors for "holiday colors," which do not have to be traditional red and green.

Color choices are limited only by the imagination, Miss Moore says.

Consider using red, white and gold or green, blue and silver.

Perhaps purple, lime and green might be this year's selector. Or pink, white and gold—or green, orange and brown—or even burgundy, red and gold may look best.

In considering on-hand items with color in mind, remember that green usually fits into most color schemes. Using either red or green as the base color also allows for the use of more lights and ornaments from "last year's supply."

In fact, lighting and accents give a color scheme added excitement or serenity.

The colored paper used in lighted valances, or try lighted wall brackets or "corners" for example.

A final thought: If regular home accessories do not fit into the 1977 holiday color scheme, store them till the season is over.

POPCORN VILLAGE

1 package (6 oz.) Jiffy Pop® Popcorn
1 cup sugar
1/2 cup corn syrup
1/2 cup water
1/4 cup butter or margarine

Prepare popcorn according to package directions. Pour into large pan or kettle. Heat sugar, corn syrup and water in saucepan to 250°-260° or until a dense syrup in cold water forms a hard ball. Remove from heat and stir in butter. Pour over popcorn and mix thoroughly. With a large spoon, saw 2 or 3 tablespoons of syrup for use in attaching parts.

Coated popcorn is now ready to be formed into peaked roof houses. You will need an empty 1/2 gal. or quart milk carton. Prepare milk cartons according to directions shown on right. Grease your hands and all cartons well. Pack cartons with popcorn, remove cartons, trim with looser, stiffer, cinnamon dots and Life Savers® candy. Use extra popcorn to form balls for sticking fills.

TO MAKE YOUR PEAKED ROOF POPCORN HOUSES

Use upper half of empty quart or half gallon milk container.
1-2-3 OPEN TOP—PUT A CORNER.
4-5-6 RECLOSE FLAPS—FOLD OVER OTHER 2 TIGHTLY WITH COATED POPCORN.

NOTICE TO THE PUBLIC:
The Tyler County Commissioners Court at its meeting on December 19, 1977, will review and set salaries for elected officials for 1978 as follows:

Position	From	To	Amount Increase
Elected Co-Wide Officials	\$13,500.00	\$14,445.00	\$ 945.00
Commissioners Car Allowance	2,400.00	4,200.00	1,800.00
Co. Judges Car Allow.	2,400.00	3,600.00	1,200.00
Co. Justices' Judge	1,155.00	1,200.00	45.00
Dist. Cr. #1 Juv. Judge	2,311.00	2,400.00	89.00
Justice-of-Peace Pct. I	9,630.00	10,304.00	674.00
Justice-of-Peace Pct. II	770.00	4,800.00	4,030.00
Justice-of-Peace Pct. III	770.00	824.00	54.00
Justice-of-Peace Pct. IV	1,800.00	1,926.00	126.00
Constables	1,200.00	1,284.00	84.00

I certify that this is in accordance with the 1978 Budget adopted September 23, 1977.

Ann Fombrun
Ann Fombrun
County Auditor

Ramblin' Round Rockland

EVADALE—The Rockland Community Center celebrated its 10th anniversary on Sunday afternoon, Dec. 4. The occasion was marked by a home one day last week after a visit with Mr. and Mrs. Calvin Youngblood and family in Silsbee.

Week-end visitors with Mrs. Bob Bowden were Mr. and Mrs. Billy Matthews and Jack Matthews of Houston.

On congratulations and best wishes go to Mr. and Mrs. Allan Kitchins who were married in Huntsville on November 25. Among those from Tyler County who attended this wedding were Mr. and Mrs. Ricky Craven, Gina Pickett, Nowlene Rawls, Paul May and Woody Woodcock.

The Rockland Revival Center reports good services on Sunday and wish to thank special guests Mr. and Mrs. Belton Colmesneil and Brother D. Moore and their children for being with them on Thursday evening at their midweek services. They also send a speedy get well wish to Mrs. Mary Holloway and Bobbie Allison.

Visiting with Mr. and Mrs. Bud Bassett this week-end were Mrs. J.D. Glickens and Mr. and Mrs. J.C. Micham.

The Baptist Church announces that this Thursday night is the monthly Baptist Men's meeting at 7:00 with the guest speaker being Rev. M.O. Lawson. All men of the Rockland area are invited to attend.

The Baptist Church also announces that they will be hosting again this year, the Fairview Baptist Church Choir, which will present their Christmas Cantata on Wednesday night, December 14. The public is invited to attend. Light refreshments will be served after the program. The Fairview Choir is under the direction of Sergio Haman.

Happy birthday to Eddie Rawls on the 11th, and Pam McDaniel on the 12th. All fans of this area to enjoy the Dallas Cowboys and Philadel-

BIRDWELLS of Wauville

Plain or Safety Steel Toe-Hardworking Feet Deserve THE HEEL FIT OF PECOS BOOTS

Large selection of sizes and widths

RED WING

Real Estate

Eleanor M. Holderman REALTOR

Falling For Frills

Many people go house hunting in a remarkably casual way and sometimes end up making costly mistakes. One of the mistakes a househunter can make is to buy the full instead of the wrong house. This mistake happens frequently and in all price ranges.

Families skip over careful consideration of the major factors because something minor has really grabbed them. The lure may be a charming fireplace, a glamorous lighting fixture, a garage door opener, or even a dogwood in bloom.

Yielding to superficial attractions like these can result in your family winding up with a thoroughly unsuitable house. Bear in mind that these same lighting fixtures can usually be added to another house at a relatively small cost, considering the amount of the overall purchase.

If there is anything we can do to help you in the field of real estate, please phone or stop in at HOLDERMANS REAL ESTATE, 802 W. Bluff, Woodville, Phone: 283-3727. We're here to help.

Jerusalem artichokes are really sunflowers that can grow six feet tall. They grow from tubers that are delicious and starch-free, raw or cooked.

Only Jack Lane Ford still offers you the Traditional Full-Size Family Car

LTD

Choose Today From a Large Inventory of LTD's in All Body Styles and Prices

FORD

Jack Lane Ford, Inc.
104 Pine 283-2526

the Giftables

microwave oven

Whirlpool specially prepared...
Free factory trained warranty service...
Priced from \$298⁰⁰ and up

Outstanding Products For The Christmas Season

HOME STEREO UNITS

CRAIG Model S201

UNDERDASH 8-TRACK WITH AM/FM/MPX RADIO

- Separate tone and left-right volume controls
- Automatic or manual program change
- Compact size fits almost anywhere
- Numbered program indicators

CRAIG Model H 388

AM/FM EIGHT TRACK STEREO RECORDER

- Enables you to record and play your favorite music on 8-track
- High quality reception AM/FM Mono and FM Stereo Broadcasts
- Fullsize automatic record changer
- Automatic and manual program changer
- Stereo indicator lamp
- Automatic Stereo switching

CRAIG Model T804

★ VALUE PACKED WITH FEATURES!

- T804 in-dash cassette w/AM/FM/MPX radio
- Locking fast forward for rapid cassette scanning
- Separate local/distance and stereo/mono pushbuttons
- Automatic eject at completion of cassette

Recliners including the Wall-Hugger

Herndon vinyl
Plymouth vinyl
Rich vinyl

Strato-Lounger
Laz-Y-Boy
Berkline

and up
priced from \$99⁹⁵

imported cane & velvet

\$77⁰⁰ ea.

Your Choice - Save '56

or buy two at '69" each

We have lovely gift items for the home including small appliances by **HOOVER**

Evans-Black Carpets

Special by Armstrong Sale Price

MANN FURNITURE

"Since 1905... J.P. Mann Gen. Merc. & Furn."

206 W. Bluff
283-3740

Whirlpool

BOTTOM MOUNTED REFRIGERATOR-FREEZER

We have it!

save up to '200 compared to other makes

We have it!

DIRECT FURNITURE SHOWCASE

"Buy Direct and Save"

302 N. Magnolia
283-5211

Livestock Show Set

HOUSTON—The Houston Livestock Show and Rodeo today announced plans for their 1978 show and announced a significant increase in their scholarship program...

Freeman explained that the increase is retroactive and includes all scholarship winners who are still enrolled in college. The cost of this new increase is \$194,000 and brings the show's total 1977 scholarship fund to \$448,000. The show now has 159 students on scholarship and over the past four years they have committed \$720,039 to keep these students in school for these scholarships.

Freeman said that the scholarship program is much more than just a gesture of goodwill. "It is a direct result of the show's concern for youth and its goal of preparing for the future through education. The presentation of each scholarship is an assurance that an outstanding youngster will get the chance to earn a college degree and work in the field of agriculture," said Freeman.

The students, carefully selected from hundreds of applicants, are among the best in the state from the standpoint of academic and leadership. The only requirement made of the student is that he or she major in some form of agriculture and attend a college or university within the confines of the state.

While the Houston Livestock Show and Rodeo makes available the funds for these scholarships, it does not select the recipients. The evaluation of the four-year scholarship applicants (each year 50 four-year awards are evenly divided between A.H. and FFA) is carried on by the appropriate personnel in the Texas Agricultural Extension Service and the Texas Education Agency. Each year, a separate scholarship is awarded to a top student from each of the 31 different counties that make up the greater Houston area. Each county appoints a scholarship selector committee that evaluates the applicants and selects a winner.

The show also provides four one-year scholarships to Prairie View A&M University students and six assistantships to graduate students at various state universities. While the amount of money funded for assistantships varies from year to year, the graduate students usually divided around \$15,000.

The 159 Houston Livestock Show and Rodeo scholarship winners this year are attending 16 different colleges and universities. While their majors are all agriculturally related, they cover a broad spectrum: plant science, veterinary medicine, crop production, agricultural journalism, agricultural education, animal science, range science, agricultural economics, agriculture, general agriculture, fisheries, agricultural engineering, biochemistry, agronomy, poultry science, animal production, farm and ranch management, agricultural marketing, wildlife management, soil science and dairy science.

Freeman also announced that the show is funding some 19 agricultural research projects at nine colleges and universities throughout the state. Besides benefiting consumers and producer alike, these research programs provide additional and invaluable learning experiences for students involved in the projects.

Give A Safe Christmas

Children should be seen and NOT HURT by Christmas toys, says the Texas Department of Health. A few months or a year or two in a child's development can make quite a difference in his ability to cope with toys.

"That's the reason manufacturers are required to place precautionary labeling on toys," says Harold Ray, director of the Department's Product Safety Division. "Consumers should look for the warning label on a toy which states that the toy isn't recommended for a child under a certain age."

Other things to watch out for include poorly constructed toys with sharp spikes or pins that are exposed when pulled apart by curious hands, and toys with triggers, gears, or other parts activated by a spring or motor that may give fingers or catch hair.

Miss Tyler County Chairmen Named

The Woodville chapter of the American Business Women's Association, sponsors of the Miss Tyler County Pageant, have announced the chairpersons for 13th annual pageant, which will be held February 4, 1978.

MHMR Uses Mobile Unit

The Mobile Evaluation Unit is a new method being used by the Mobile Evaluation Unit to provide evaluation services to people in rural East Texas through the Deane East Texas Regional MHMR Services.

The mobility of the facility is in keeping with the concept of persons in the 13 county region receiving mental, emotional and health services in their home communities rather than traveling to a central location or institution.

Shipwrecked On Padre Island Early Texas Tale Told

When the United States was in war with Mexico in 1857, a call was issued for blue-blooded and adventurous men to enlist as soldiers.

When the United States was in war with Mexico in 1857, a call was issued for blue-blooded and adventurous men to enlist as soldiers. Dr. Compton Smith, who was traveling in East Texas at the time, set out for Galveston Island to see the remains of Joseph Bennett's partially organized company of riflemen.

Near the end of the month Smith and about one hundred other volunteers embarked under protest upon the unseaworthy, overcrowded, and ill-provisioned schooner Rowella. The ship was to be towed to the mouth of the Rio Grande. Here they would join other volunteer troops preparing to invade Mexico.

This first portion of a three-part series, taken from Dr. Smith's memoir, "Chill Com Carner," published in New York in 1857, recounts the circumstances which led to the shipwreck of the company on Padre Island.

The schooner Rowella was a three-masted vessel, 100 feet long and 25 feet wide. It was built in 1855 and was in poor condition. The ship was to be towed to the mouth of the Rio Grande. Here they would join other volunteer troops preparing to invade Mexico.

Young Hunter

Frank Curtis, 13, holds the eight-point buck he shot with a 12-gauge shotgun on the Seven-C Ranch three miles west of Warren. (Staff Photo)

For Two

Kirby High School's Kristie Broussard, right, sets for a shot against Huntington during the Warren Tournament last Thursday. For more details on the tournament see the sports section in the Booster. (Staff Photo)

When the United States was in war with Mexico in 1857, a call was issued for blue-blooded and adventurous men to enlist as soldiers. Dr. Compton Smith, who was traveling in East Texas at the time, set out for Galveston Island to see the remains of Joseph Bennett's partially organized company of riflemen.

Near the end of the month Smith and about one hundred other volunteers embarked under protest upon the unseaworthy, overcrowded, and ill-provisioned schooner Rowella. The ship was to be towed to the mouth of the Rio Grande. Here they would join other volunteer troops preparing to invade Mexico.

This first portion of a three-part series, taken from Dr. Smith's memoir, "Chill Com Carner," published in New York in 1857, recounts the circumstances which led to the shipwreck of the company on Padre Island.

The schooner Rowella was a three-masted vessel, 100 feet long and 25 feet wide. It was built in 1855 and was in poor condition. The ship was to be towed to the mouth of the Rio Grande. Here they would join other volunteer troops preparing to invade Mexico.

Shipwrecked On Padre Island

When the United States was in war with Mexico in 1857, a call was issued for blue-blooded and adventurous men to enlist as soldiers. Dr. Compton Smith, who was traveling in East Texas at the time, set out for Galveston Island to see the remains of Joseph Bennett's partially organized company of riflemen.

Near the end of the month Smith and about one hundred other volunteers embarked under protest upon the unseaworthy, overcrowded, and ill-provisioned schooner Rowella. The ship was to be towed to the mouth of the Rio Grande. Here they would join other volunteer troops preparing to invade Mexico.

Fresh Fruit, Vegetables Best Buys

COLLEGE STATION—Citrus, vegetables and some meat cuts offer good values to Texas grocery markets—and the pecan crop is large, reports Mrs. Gwendolyn Cyatt, consumer marketing information specialist with the Texas Agricultural Extension Service, The Texas A&M University System.

FRESH PECANS—To figure the most economical buy, remember that two pounds of nuts in the shell will yield one pound (about four cups) of unshelled nuts, she says. Also, look for shells free from cracks, holes or scars. Shells well-filled so kernels do not rattle or a good-quality sign. Shelled nuts should be plump and meaty with a crisp, fresh taste, and fresh ones will stay best longer.

FRESH FRUIT—Items with the most economical prices are grapefruit, oranges, tangerines, apples, cranberries, grapes and bananas.

FRESH VEGETABLES—Best values include sweet potatoes, cooking greens, turnips, hard-shell squash, carrots, rutabagas, dry yellow onions, celery, cauliflower, broccoli and potatoes.

POULTRY—Turkey parts from large size birds are good values, but egg prices likely will ease upward nearer the holidays.

For egg economy, if there is less than a seven-cent price spread between one size and the next larger size in the same grade, the larger size offers more for the money.

BEEF—Good values include chuck roasts and steaks, round and rib steaks, ground beef and liver.

PORK—The pork picture looks good, with selections from Boston butts, chops, roasts and liver. Smoked features include hams, picnics, bacon and sausage.

HOLIDAY WATCH—WORDS: To retain pecan freshness, keep them in a cool dry place in an air-tight container. They keep longer in the shell. If shelled, they keep longer whole and unshelled in vacuum cans.

Check On Charities

COLLEGE STATION—Before you "give to charity," learn where your donation will go, says Mrs. Linda McCorkle, family resource management specialist with the Texas Agricultural Extension Service, The Texas A&M University System.

The holiday season promotes the spirit of giving, and consumers who want to make sure where their contributions go will have a source of help, she says.

To get ready, write to the National Information Bureau, 419 Park Avenue South, New York, New York 10016. Consumers may receive free reports on up to three charitable organizations.

The National Information Bureau (NIB) also provides a free monthly pamphlet, "The Wise-Giving Guide," which reports the NIB's rating of a wide range of charitable organizations.

Consumers can help to promote a more charitable operation of such organizations by checking up before writing a check, the specialist suggests.

Forest Fire Is Costly

LUFKIN—Setting forest fires can be a costly experience as was recently learned by a young motorcycle rider on the Davy Crockett National Forest.

The Houston County Sheriff and a Forest Service officer apprehended and arrested a 16-year old resident of Houston County, after the youth had set a series of nine fires while riding his motorcycle on the federal forest lands.

On pleading guilty in U.S. District Court, the youth fined \$300 on the criminal offense of willfully setting the fires and was then fined by federal officers to recover the \$600 fire-suppression costs involved in extinguishing the blazes.

Federal officers have indicated that the juvenile been an adult, he would have been charged with felony arson which carries a fine of \$5,000 or five years imprisonment, or both.

OVEN PRIDE ROLLS
3 / 89¢ PKGS.

DOUBLE STAMPS TUESDAY
WITH 2ND PURCHASE OR MORE (EXCLUDING CIGARETTES)

STRETCH YOUR DOLLAR
ALL QUANTITY RIGHTS RSVD.

HI-DRI PAPER TOWELS
2 / 89¢ BIG ROLLS

Kitchen Gifts Are Practical
COLLEGE STATION—Gifts from the kitchen that keep on giving are those prepared by loving hands and packaged in handy kitchen utensils, suggests Marilyn Haggard, foods and nutrition specialist, the Texas Agricultural Extension Service, The Texas A&M University System.

FLOUR
5 LB. BAG 59¢

KETCHUP
14 OZ. BOTTLE 39¢

CAKE MIX
ASST. FLAVORS EACH 59¢

COLD POWER
GIANT SIZE 156 OFF LABEL \$1.19

COFFEE
HY-TOP 1 LB. CAN 2.69

DINNERS
HY-TOP MACARONI & CHEESE 7 1/2 OZ. PKG. \$4.11

PRODUCE SPECIALS
CALIFORNIA LETTUCE 3 HEADS \$1.00

Summer Sun Collection STONWARE
This Week's Feature All Items 79¢

HEALTH & BEAUTY AIDS
SHAMPOO \$1.39
CREME RINSE \$1.19
TAMPAX \$1.79
ALCOHOL 35¢
LIFEBUOY 73¢

FROZEN FOODS
KITCHEN TREAT MEAT PIES EACH 19¢
FISH STICKS 90Z PKG 99¢
PIE SHELLS 49¢
DINNERS 65¢
JUICE 12 OZ CAN 69¢

FROSTINGS 16 OZ. SIZE 99¢
PANCAKE MIX 2 LB. BOX 79¢
PANCAKE SYRUP 24 OZ. BOTTLE \$1.19
BUNDT CAKE ASST. FLAVORS \$1.19

Shortening
HY-TOP ALL VEGETABLE 5 LB. CAN 99¢

BROCCOLI 69¢
CARROTS 25¢
RADISHES 2/29¢

ONIONS 2/39¢
GRAPES 59¢
POTATOES 59¢

Mayonnaise 99¢
PARKAY 69¢
BUTTERMILK 79¢
COTTAGE CHEESE 53¢
LOWFAT MILK 69¢
DIPS 35¢

County Shares Travel \$
AUSTIN—Tyler County received \$3,502,700 of the State's \$6,075,000 travel receipts in 1976, a national study commissioned by the Texas Tourist Development Agency has disclosed.

ROUND STEAK
LB. family pack \$1.18

meat specials
CHUCK ROAST 59¢
SHORT RIBS 69¢
SIRLOIN STEAK \$1.18
RIB STEAKS \$1.19
T-BONE STEAKS \$1.59
SHOULDER ROAST 69¢

CORN 3 \$1.00
ZINGERS 89¢
PEANUT BUTTER \$2.49

CHUCK ROAST 59¢
SHORT RIBS 69¢
SIRLOIN STEAK \$1.18
RIB STEAKS \$1.19
T-BONE STEAKS \$1.59
SHOULDER ROAST 69¢

CHEESE \$1.09
MUENCHNER \$1.09
GROUND BEEF 89¢
SAUSAGE \$1.49

CHEEZWHIZ 89¢
MARSHMALLOWS 33¢
HOT COCOA MIX \$1.29
INSTANT COFFEE \$4.89
BABY FOOD \$1.00

RAIN BARRELL \$1.09
CLEANER LYSOL 95¢
VANILLA WAFERS 59¢
CHUNK TUNA 69¢
BROWN & BAGS 89¢

WALNUTS \$1.39
NUTS \$1.09
WALNUTS 79¢

CHUCK \$1.19
MEATS \$1.09
SMOKEES 99¢
BACON \$1.39
BACON \$1.29

COOKED HAM \$1.59
CHOPPED HAM \$1.29
PICKLES \$1.19
SMOKIES \$1.29
BOLOGNA 69¢

ARMOUR REGULAR HOT DOGS 79¢
JUICE \$1.71
OIL \$1.59

ARMOUR REGULAR HOT DOGS 12 OZ. PKG. 79¢
JUICE 6 OZ. CANS (LOOSE PACK) \$1.71
OIL 1/2 GALLON BOTTLE \$1.59

ARMOUR REGULAR HOT DOGS 12 OZ. PKG. 79¢
JUICE 6 OZ. CANS (LOOSE PACK) \$1.71
OIL 1/2 GALLON BOTTLE \$1.59

ARMOUR REGULAR HOT DOGS 12 OZ. PKG. 79¢
JUICE 6 OZ. CANS (LOOSE PACK) \$1.71
OIL 1/2 GALLON BOTTLE \$1.59

ARMOUR REGULAR HOT DOGS 12 OZ. PKG. 79¢
JUICE 6 OZ. CANS (LOOSE PACK) \$1.71
OIL 1/2 GALLON BOTTLE \$1.59

ARMOUR REGULAR HOT DOGS 12 OZ. PKG. 79¢
JUICE 6 OZ. CANS (LOOSE PACK) \$1.71
OIL 1/2 GALLON BOTTLE \$1.59

HORMEL CURE B1 HAMS \$2.99

BROOKSHIRE SLAB SLICED BACON \$1.29

ARMOUR REGULAR HOT DOGS 12 OZ. PKG. 79¢

JUICE 6 OZ. CANS (LOOSE PACK) \$1.71

OIL 1/2 GALLON BOTTLE \$1.59

ARMOUR REGULAR HOT DOGS 12 OZ. PKG. 79¢

ARMOUR REGULAR HOT DOGS 12 OZ. PKG. 79¢

ARMOUR REGULAR HOT DOGS 12 OZ. PKG. 79¢

HAM STEAK \$2.79
WEINERS OR FRANKS \$1.19

RATH MINUTE LINKS 8 OZ. PKG. 69¢
SUMMER SAUSAGE 89¢
SMOKED SAUSAGE \$1.59

ARMOUR REGULAR HOT DOGS 12 OZ. PKG. 79¢

JUICE 6 OZ. CANS (LOOSE PACK) \$1.71

OIL 1/2 GALLON BOTTLE \$1.59

ARMOUR REGULAR HOT DOGS 12 OZ. PKG. 79¢

ARMOUR REGULAR HOT DOGS 12 OZ. PKG. 79¢

ARMOUR REGULAR HOT DOGS 12 OZ. PKG. 79¢

Brookshire Bros. THE BEST FOR LESS.
NORTH CHARLOTTE WOODVILLE

FOOD STAMPS Welcome!

COUPON 50 FREE
COUPON 50 EXTRA

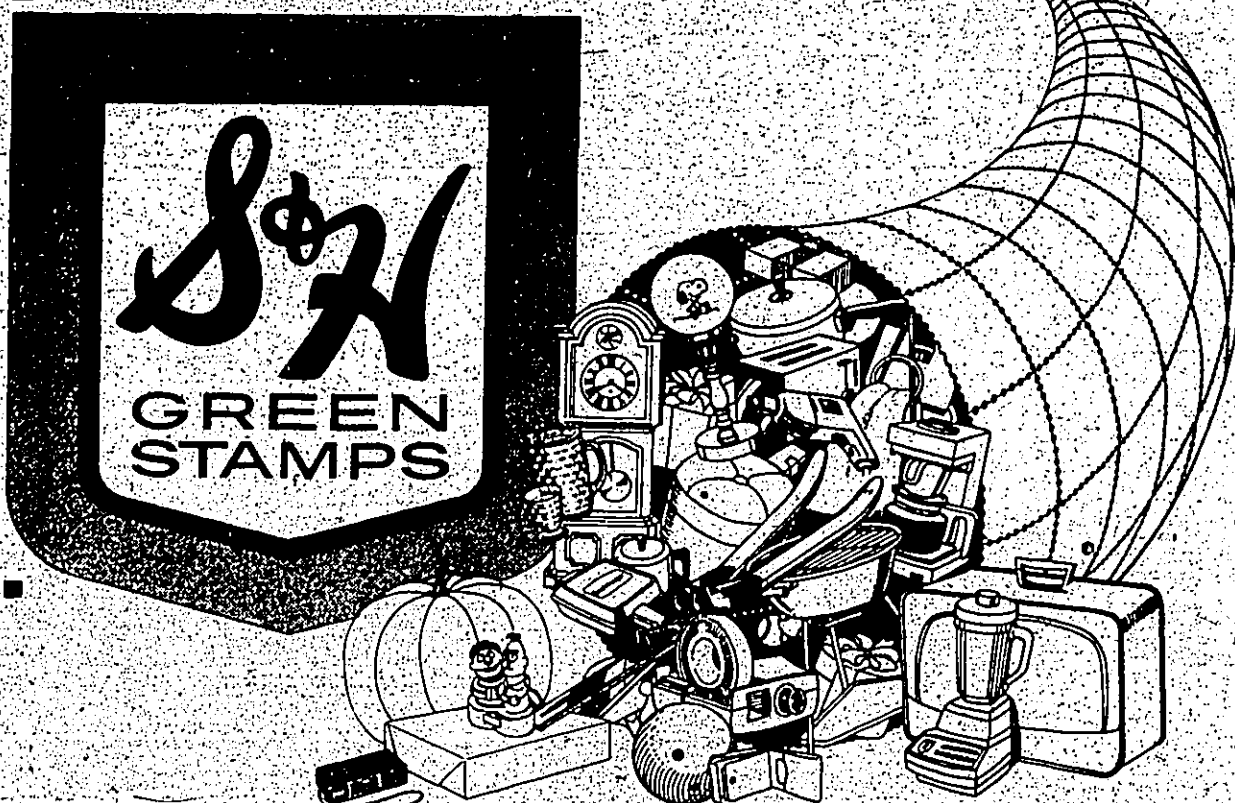
Come to BROOKSHIRE BROS. Holiday Harvest!

REDEEM COUPONS BELOW FOR

2300

Extra S&H Green Stamps.

The gift-giving season is on the way... so this is the season to save S&H Green Stamps. Our Holiday Harvest is the way to do it. Save these coupons. Save on our prices. And save bunches of extra S&H Green Stamps.



EXTRA STAMPS WITH THIS COUPON AND PURCHASE OF 18" x 25" Roll Reynolds HEAVY DUTY FOIL Good: December 7-13, 1977	EXTRA STAMPS WITH THIS COUPON AND PURCHASE OF 2 Pepsodent Adult TOOTHBRUSHES Good: December 7-13, 1977	EXTRA STAMPS WITH THIS COUPON AND PURCHASE OF 7 Oz. Tube Colgate TOOTHPASTE Good: December 7-13, 1977	EXTRA STAMPS WITH THIS COUPON AND PURCHASE OF Pkg. 40 Glad TRASH BAGS Good: December 7-13, 1977
EXTRA STAMPS WITH THIS COUPON AND PURCHASE OF Hy-Top 2 Lb. Jar GRAPE JELLY Good: December 7-13, 1977	EXTRA STAMPS WITH THIS COUPON AND PURCHASE OF 24 Oz. Bottle Hy-Top GRAPE JUICE Good: December 7-13, 1977	EXTRA STAMPS WITH THIS COUPON AND PURCHASE OF 5-8 Oz. Cans Contadina TOMATO SAUCI Good: December 7-13, 1977	EXTRA STAMPS WITH THIS COUPON AND PURCHASE OF 2 Lb. Bag Blanco YELLOW POPCORN Good: December 7-13, 1977
EXTRA STAMPS WITH THIS COUPON AND PURCHASE OF 24 Oz. Jar Heinz POLISH DILL SPEARS Good: December 7-13, 1977	EXTRA STAMPS WITH THIS COUPON AND PURCHASE OF Pkg. 12 (1 oz. each) Carnation HOT COCOA MIX Good: December 7-13, 1977	EXTRA STAMPS WITH THIS COUPON AND PURCHASE OF Pkg. 8 Texas ORANGES Good: December 7-13, 1977	EXTRA STAMPS WITH THIS COUPON AND PURCHASE OF 2 Lb. Bag Blanco JUMBO LETTUCE Good: December 7-13, 1977
EXTRA STAMPS WITH THIS COUPON AND PURCHASE OF 5 Cans CUCUMBERS Good: December 7-13, 1977	EXTRA STAMPS WITH THIS COUPON AND PURCHASE OF 1 Lb. Bag CARROTS Good: December 7-13, 1977	EXTRA STAMPS WITH THIS COUPON AND PURCHASE OF 8 Large BELL PEPPERS Good: December 7-13, 1977	EXTRA STAMPS WITH THIS COUPON AND PURCHASE OF 10-14 Lb. Swift Butterball TURKEY Good: December 7-13, 1977
EXTRA STAMPS WITH THIS COUPON AND PURCHASE OF Brookshire Bros. 1lb. Pkg. LUNCH MEATS Good: December 7-13, 1977	EXTRA STAMPS WITH THIS COUPON AND PURCHASE OF 3 Lb. Or More USDA HEAVY BEEF ROAST Good: December 7-13, 1977	EXTRA STAMPS WITH THIS COUPON AND PURCHASE OF One Cure 81 QUARTER SLICED PORK LOIN Good: December 7-13, 1977	EXTRA STAMPS WITH THIS COUPON AND PURCHASE OF One Cure 81 BONELINE HAM Good: December 7-13, 1977

COUPONS ABOVE GOOD DECEMBER 7th - 13th, 1977



S&H GREEN STAMPS the gift getters



New AARP Officers
New officers for Woodville Chapter 792, American Association of Retired Persons (AARP), were sworn in Monday at the Woodville Inn. They are, from left to right, FRONT-Recording Secretary Mrs. Everett Pfeiffer, Corresponding Secretary Mrs. A.T. Laux, Treasurer Mrs. C.M. Lovell, BACK-President Rev. Clyde Bennett, Assistant State Director NRTA/AARP Gordon Gay, who spoke at the new officers, Nominating Committee Chairman H.O. Shepherd and Vice President Tom Kent. (Staff Photo)

Tyler County CB Club Meets

By VIRGINIA WORLEY
The Tyler County CB Club held its regular meeting Thursday, Dec. 1st. President Slim Jim welcomed 20 members who were present. A special welcome was given to our new member, George of the Jungle. We have one member in the hospital. Hawkeye we hope you will be well soon and back on the old saw. The number one thing on our agenda at this writing is the Tyler County CB Club's participation in the Santa's on the courthouse square, the holiday season. Be sure to have our concession trailer. We will serve our famous

grilled hickory-smoked hamburgers, barbecue sandwiches and hot links. We invite everyone to come by and eat with us, or take your food home. We will be serving both on Dec. 15th, and 16th from 10 a.m. till the people leave. Tyler County CB Club members are glad to be able to take part in this worthy cause. Our profits will be given to aid the County Human Resources Department in purchasing portable food for the needy participation in the Santa's at Christmas Time. We will appreciate your support. Let us remember others during the holiday season. Be sure to have our concession trailer. We will serve our famous

Our club will have a Christmas Party for our youngsters on Dec. 20th. The adult Christmas party will be on Dec. 22nd. We urge all of our members and their families to attend. Please contact one of our club members for the details and time.

Our plans for our January 29, 1978 are going great. We ask all of our members to be present at our meeting in January when we make other preparations. We have to have something of interest for all C.Bers at our jamboree.

Tyler County CB Club members wish all of our friends and neighbors a joyous Christmas and a New Year filled with Peace and Happiness. Virginia Worley, Lady Double Eagle, K.A.O.H. 4057

SSI Recipients Should Report Any Changes

Announcing Winter Enrollment at the Academy of Dance Woodville Classes For All Ages Beginners, Intermediate & Advanced Tap, Ballet, Jazz Taught by Tawnya Grimes Evening exercise classes For information call 837-5340 837-5253 837-5226 283-5224

Persons receiving benefits under the Social Security Supplemental Security Income Program have the responsibility to report any changes that could affect their eligibility for payment. Failure to make immediate reports of changes can result in overpayments for which Social Security will request a refund to repay the overpaid amount. Persons receiving Supplemental Security Income benefits should report any of the following changes:

1. A change in their mailing address.
2. Any changes in their living arrangement such as moving into or out of another person's household.
3. Leaving the United States for 30 days or more.
4. Getting married or a marriage ending by divorce or annulment or the death of either the husband or wife.
5. In the case of a couple, either member must report a separation for more than six months or a decision to begin living together after a separation for more than six months.

Someone else should report if a person dies, refuses treatment required for drug addiction or alcoholism, or if a person becomes unable to manage his or her own benefits. All reports may be made by contacting your social security office in Lufkin.

St. Regis Merges With Southland

HOUSTON—Stockholders of Southland Paper Mills, Inc. have given their approval to a proposal that will merge the company with St. Regis Paper Company. The action came here during a special meeting of Southland stockholders. St. Regis stockholders approved the merger during a special meeting in New York the day before. The effective date of the merger was December 1. Under provisions of the transaction, Southland stockholders will receive 1.1 share of St. Regis common stock for each share of Southland common stock. St. Regis owned 39.3 per cent, or about four million shares, of Southland's 10.7 million outstanding shares before merger discussion began. St. Regis has agreed to nominate to its Board of Directors Melvin E. Kurthy Jr. of Houston, Southland's Board Chairman, President and Chief Executive Officer, and Daniel B. Burke of New York, President and Director of Capital Cities Communications Inc., a major Southland stockholder and owner-operator of several newspapers, magazines, broadcast stations and other communication facilities in the U.S. Addressing Southland's stockholders, Kurthy said St. Regis plans to operate Southland as its newspaper division and will retain the Southland identity although the company will cease to exist as a separate corporation. St. Regis will begin as a newspaper producer around the turn of the century in the future, a new newspaper in more than 40 years. Addressing a division of a leading paper company with resources worldwide, Southland will be in an improved position to meet the challenges of additional manufacturing capacity. This will be needed by our customers in the future, said Kurthy. "A key to this expansion is a broadened forest resource base which will be provided by the merger." Kurthy also had praise for Southland stockholders and their faith in the company. The Southland newspapers, for example, have been in existence since 1940; the company's employees and the people of East Texas for their support. "We are deeply grateful for the support we've gotten from all of these groups," he said, "and I can assure them that Southland will continue to serve as a division of a separate company." Southland, which pioneered the manufacture of commercial pulp and paper in southern pine at Lufkin in 1940, is the nation's second largest supplier of domestic newsprint. In addition to the Lufkin Mill, the company operates a second pulp and paper mill in Houston and owns in fee 572,000 acres of timberland in East Texas. Southland earned \$18.2 million on revenues of \$186 million in 1976. St. Regis headquarters in New York is a fully integrated forest-based products company with international operations. The company produces pulp, paper and other converted materials and construction products. The company operates nearly 148 facilities in 10 countries, and has investments in affiliates that operate 76 plants in 23 countries. It also owns or holds under various long-term timber purchase agreements and leases a total of 3,530,000 acres of timberland in 15 states.

Minyard In Pageant

PASADENA—Melba Beth Minyard, a senior at Pasadena High School, is one of 75 girls who will be competing in the school's Most Beautiful Pageant, Dec. 10. "Miss Minyard" is the daughter of Mr. and Mrs. Jess E. Minyard and the granddaughter of the Rev. and Mrs. Jack Minyard of Colmesville. Sponsored by her senior hometown class, Miss Minyard is one of 565 members of the Class of 1978 at PHS. She has been in the school choir for three years and is currently pianist for both the school choir and the Chorales. She is a member of the National Honor Society, Mu Alpha Theta and the Keyettes.



Melba Minyard

WE HAVE MOVED TO 1105 S. Magnolia

Champion Western Shirts
Long Sleeves Reg. '10"
Sale \$7.99

Maverick Jackets \$6.00

Come by for free Tony Lama Key Chain Register For Prizes

M & M WESTERN STORE
1105 S. Magnolia 283-8896

Flowers Christmas Arrangements

Door Decorations Centerpieces

Silk & Dried Flowers
For hair, dresses, centerpieces, weddings

Potted Green Plants

Red-Pink-White Variegated **POINSETTIA PLANTS**

Complete line of landscape shrubs, azaleas, camellias, sasanquas, etc.

Thoma Nursery & Florist
Highway 69 S. 283-2421

Christmas Values

SAVINGS UP TO 50%

LADIES MAD RAGS
dresses & pant suits values to \$16.99 \$6.99

Ladies Fall COATS
20% off

Ladies Long Vinyl COATS reg. \$30 \$22.88

Men's Western SHIRTS
\$20.99 value \$10.99

ONE RACK CENTER STAGE
30% off

Men's JACKETS
reg. \$30 \$19.99

Ladies Billy the Kid SLACKS \$7.99

Boys BILLY THE KID SLACKS \$7.99

All Boys & Girls JACKETS
20% off

All Materials, Thread, Zippers & Patterns 20% off

Automatic Blankets \$19.99

BIRDWELL'S of Woodville

SAVE WHERE YOUR MONEY REALLY ADDS UP!

5.25% Regular Passbook Account Equals 5.39% Annually Compounded Daily
Interest Paid From Date Of Deposit To Date Of Withdrawal

We're Home Owned and Home Operated. LOCATED DOWNTOWN WOODVILLE.

OPEN MONDAY THRU THURSDAY 9 a.m. to 3:30 p.m. FRIDAY 9 a.m. to 3:30 p.m. Closed on Saturday

Annual Yield	Rate	
8.06%	7.75%	\$1,000 on 6 year certificate
7.79%	7.50%	\$1,000 on 4 year certificate
6.98%	6.75%	\$1,000 on 2 1/2 year certificate
6.72%	6.50%	\$1,000 on 1 year certificate
5.39%	5.25%	Passbook Account \$5.00 minimum deposit, \$5.00 withdrawal

A Substantial Interest Penalty Is Required For Early Withdrawal From Certificate Accounts

Member of Federal Savings & Loan Insurance Corporation
Federal Home Loan Bank System
United States Savings & Loan League
Texas Savings & Loan League
Supervised by Texas State Savings & Loan Department
Federal Home Loan Bank Board

SOUTHEAST TEXAS SAVINGS and Loan Association

P.O. Box 936 Woodville, Texas 75970



In the summer, it keeps the cool air in your home and the hot air out. And in the winter, it does just the opposite. Whether you use the blown type or the batt type, just make sure you have an R Value of at least 19.

For more information, visit the GSD Energy Information Center nearest you.

GULF STATES UTILITIES
We can help. And we want to.

"Proper attic insulation can save you energy and money."



pre-Holiday SALE

Weekly Special 1978 Jimmy fully loaded

4 Wheel Drive SALE PRICED \$8902.00

1978 Buick LeSabre Custom 4 door Sedan
Fully loaded nice family car-power split bench seat, floor mats, door edge guards, A/C, P/S, P/B, cruise cont., tilt wheel, AM-FM stereo, mild group, custom belts, tint glass, body side mldgs, vinyl roof, remote mirror, V/8, W/W radials, bumper guards, acc. group. LIST PRICE \$10,343.95
SALE PRICED \$7172.00

1978 Pontiac Catalina 4 door Sedan
Loaded, body side mldgs, V/8 engine, W/W radials, air cond., P/S, P/B, seat belts, clock, tint glass, additional insulator, lamp group, floor mats, remote mirror, window mldg, group, AM radio, rear seat speaker, tilt, strug, wheel, tilt wheel custom fitted wheel covers. LIST PRICE \$7,280.95
SALE PRICED \$6343.00

1978 Cutlass Salon Coupe 2 door
260 V/8, auto, air cond, P/S, P/B, tint glass, floor mats, door edge guards, AM-FM stereo, pln stripes, body side mldgs, W/W radials, conv. group. LIST PRICE \$6,461.54
SALE PRICED \$5811.00

A & M MOTOR CO., INC.
283-2534 605 S. Magnolia

Holiday Shopping Outlook Is Good

AUSTIN—State Comptroller Bob Bullock said Tuesday that Texas may be headed for their biggest Christmas holiday shopping spree if retail sales continue at their current brisk pace.

Bullock said that city sales tax collections—a prime indicator of the buying public's mood—are up an impressive 22 percent to date over last year, the biggest increase in recent years.

"This increase in retail sales reflects a growing confidence in the Texas economy we feel will carry over into the holiday shopping period," Bullock said.

"If everything continues to go as expected, Texas merchants should have one of their best holiday sales seasons yet."

Bullock said that 80 Texas cities were mailed checks Tuesday totaling \$19.2 million as their November share of the one percent city sales tax.

"This brings the total to date for the year to \$907.7 million, up from \$720 million for the same period last year."

City sales tax collections registered a 13 percent increase in 1975, went up 14.5 percent last year.

In Tyler County, Woodville was mailed the largest check and will receive \$7,020.80 back from Bullock's office. Collicott will receive \$666.05, according to the comptroller's office.

Warren Winners

Cash prizes were recently awarded to the Warren students who sold the most candles during a Fall fundraising drive. Pictured above are Debbie Gentry, representing the high school band, and Chad Selley, right, a member of the beginning band. Not pictured is Melody Scroggins, the winner from the junior high band. (Marc McConnell won a \$5 prize in a drawing for members who had delivered all their orders, and Bobby Martin won a \$20 prize in another drawing for those who had sold 20 or more orders.)

Tips For Winter Car Care

Cold weather is just around the corner in our area of Texas and winter colds are not only out to get your children. Common cold strikes more cars than any other winter malady.

Prevention, according to the Better Business Bureau of Southeast Texas, is the best way to keep a healthy car this winter.

The best advice, as the Boy Scout motto states, is "Be Prepared."

To make sure your car can stand up to cold weather's extra power requirements, clean and "lighten" battery terminals. A few minutes at your local service station and you can make sure the battery is fully charged and its fluid level checked.

And don't forget the starter and alternator—both can be a source of battery drain.

For do-it-yourselfers, the following steps are advised for putting in antifreeze:

Drain the present coolant, flush the system with a quality chemical cleaner and neutralizer, examine the hoses for signs of weakness (a squeeze or tug is sufficient) and replace them if necessary.

As the temperature drops oil thickens, so use a light weight motor oil that is offered for the cold weather months.

Some helpful items to include in your car for winter include a flashlight, ice scraper, rag to clean headlights and inner windshields, in spare containers of washer fluid and a small shovel, in case you get stuck.

The safest rule for driving on icy streets and roads is to "Stay off the roads, the BBB advises, until they are cleared."

But, if you must drive, prepare your car and drive slowly and carefully when Old Man Winter arrives.

Nothing to sneeze at... LENNOX Electronic Air Cleaners

Electronically traps 96% of airborne dust; 99% of this pollen as measured by the National Bureau of Standards' Dust-Spot method. Ask your doctor about what it can do for allergies and think what it can do for house cleaning.

May we introduce you to clean air? 283-3496

WATSCO AIR CONDITIONING & HEATING
100 S. Bluff Woodville

We Can Make Your Money Grow Faster

Which Plan is Right for You?

TYPE OF ACCOUNT	ANNUAL RATE	ANNUAL YIELD	MINIMUM TIME	MINIMUM AMOUNT
PASSBOOK	5.25%	5.39%	NONE*	\$ 5
PASSBOOK	5.75%	5.92%	90 DAYS*	\$ 500
CERTIFICATE	6.50%	6.72%	1 YEAR	\$ 1,000
CERTIFICATE	6.75%	6.98%	2 1/2 YEARS	\$ 1,000
CERTIFICATE	7.50%	7.79%	4 YEARS	\$ 1,000
CERTIFICATE	7.75%	8.06%	6 YEARS	\$ 1,000
JUMBO CERTIFICATE	NEGOTIABLE	NEGOTIABLE	NEGOTIABLE	\$100,000

*Interest paid from date of deposit to date of withdrawal.
*A substantial interest penalty is required on withdrawals except at call; no quarters following maturity.
A substantial interest penalty is required for early withdrawal from certificate accounts.
EACH ACCOUNT INSURED TO \$40,000.00 LIMIT.

SERVICES AVAILABLE AT THE WOODVILLE BRANCH

Savings Accounts-Conventional Home Loans-Commercial Loans-Home Improvement Loans-Loans on Savings Accounts-Save by Mail-Bank Draft Savings & Loan Payment Plan-Money Orders-Retirement Programs

WE OFFER COMPLETE SERVICING TO ANY JASPER FEDERAL ACCOUNT
Come in and let us start your savings plan today.

"WHERE YOU SAVE DOES MAKE A DIFFERENCE"

JASPER FEDERAL Woodville Branch
1008 W. Bluff 283-3716

Fur Wanted

HIGHEST PRICES PAID FOR RAW AND DRY FUR
ALL FUR WILL BE CAREFULLY (ON REQUEST) EXCEPT BEAVER SKIN (SWI DEER SEPARATE)

BEAVER ROBBAY DIVET CAT BRUNK
COYOTE DEER GRAY FOX RED FOX
WILD CAT MINK MUSKUNTA NUTRIA
OPUSSUM RACCOON SUNTAL

DECEMBER & JANUARY (Some Prices, Times And Day Each Week (ONCE WEEKLY))

LOCATION: WOODVILLE FEED & SUPPLY
TIME: STARTING 6:00 P.M. FROM 12-3-77 TO 1-31-78
TOWN: WOODVILLE, TEXAS
EACH AND EVERY THURSDAY
PHONE: 837-4483 CLEONARD CONNER

Get On The Right Track...at Gulf

Maintenance Free Cruisemaster-MF-42

Gulf's 42-month battery Ready power for normal passenger car service. Designed to last the period of warranty without the need to add water.

SIZE	RESERVE
MF42-74	65.50
MF42-74	40.47
MF42-74	45.24
MF42-24	37.78
MF42-24	37.78
MF42-24	31.52
MF42-24	31.52

Ask dealer for details.

Oil Change and Lube

Complete chassis lubrication and a change to Gulf's finest 10/40 motor oil. All labor included.

4 qt. capacity \$6.50
5 qt. capacity \$7.50

Carry-Out Special Cruisemaster Oil Filter

For most American cars \$3.75

GRIMES GULF Service Center

112 South Magnolia, Woodville, Full Care Car Center—Wash & Wax Grease, tires (Passenger truck wheels, Batteries & Accessories)



Apache Bell

Janny Tolbert of Woodville will be one of the more than 255 featured entertainers at Super Bowl XII in New Orleans. Miss Tolbert, daughter of Mr. and Mrs. Tony Tolbert is a Freshman Apache Belle at Tyler Junior College. Other entertaining groups from TJC are the Apache Band, Harmony and Understanding, Pete Fountain of New Orleans will also be featured at halftime.

Credit Is A Lifetime Gift

COLLEGE STATION—Give your wife an annual lifetime Christmas present. Help her establish an independent credit rating, suggests Mrs. Linda McCormick, family resource management specialist with the Texas Agricultural Extension Service.

The Texas A&M University System. Changing current credit rating, suggests Mrs. Linda McCormick, family resource management specialist with the Texas Agricultural Extension Service.

Death of a husband no longer means that joint accounts or accounts which the wife used will be automatically withdrawn from the widow. Creditors cannot terminate accounts because of change in a woman's marital status, unless they have evidence that her financial situation has changed for the worse.

However, if the account was based on the husband's income, the widow may be asked to reapply to prove that she is able and willing to pay for debts in the account.

"Help your wife avoid problems," suggests the specialist. "Offer protection; help her establish a credit rating in her own name."

Texas wives have less trouble establishing an independent credit rating than do women who do not live in a community property state. Wives in Texas are by law recognized as joint-owners of assets in a joint checking or savings account.

Women who are employed, even part-time, have fewer problems establishing a credit rating than do women who are not employed.

Beginning June 1, 1977, any new joint accounts between husband and wife must be maintained in both names (Mary Jane Smith and John Edward Smith, not Mr. and Mrs. John Edward Smith).

If your joint account is already in the names of both husband and wife, re-establish separate credit references by changing the signature cards for your accounts to comply with the new law.

If your wife owned credit cards prior to your marriage, make sure that those accounts now reflect her married name. For example, Mary Jane Smith not Mrs. John Edward Smith.

In a sense you are giving her another form of insurance—the specialist says.

Huntington Forester Honored

LUFKIN—Waiting for a new log to grow from germination to maturity is about like waiting for a look at Haley's Comet—don't miss it the first time or you might not live long enough for a repeat performance.

M.M. Flournoy of Burtis 2, Huntington, already has had enough birthdays to see that loggers could begin to process a certain area.

Now, he's working on another.

Flournoy, at the age of 74, currently manages about 600 acres of timberland.

And while he waits the necessary 35 to 40 years for trees to reach saw log size, he sells his culls—the rough, crooked and diseased pieces for pulpwood.

His efforts have earned him the 1977 Texas Forestry Association Tree Farmer of the Year Award.

The selection was made by the TFA Tree Farm Committee headed by Ed Welch, chairman.

The award is the first citation for Flournoy's timber efforts. He has been lauded several times—including

recognizing an article in the widely distributed "Farmer Stockman Magazine" a few years back.

As a conscientious tree farmer, Flournoy's woodland efforts always point to the future.

Just this year, he had a road built into the forest so that loggers could begin to process a certain area.

Flournoy was nominated for the Tree Farmer of the Year Award by W. Alan Tankley, a Southern Paper forester.

He succeeds the 1976 winner, the late W.P. Lane of Marshall.

along with the gridding of undesirable hardwood species to enable his saw timber to prosper.

And when he cuts, he plants back in 1976, he and his wife planted 100 acres themselves with a tree planter hitched to a farm tractor. In 1976, they planted 27 acres.

Join... OUR CHRISTMAS CLUB

Take Santa's advice and join our Christmas Club now. By next year's holiday time you'll have a tidy sum saved up for all your Christmas Shopping. It's easy! Start your Christmas Club account today.

CITIZENS STATE BANK P.O. Box 109 Woodville, Texas 75799

FDIC 283-2561

GIVE US A CHANCE TO SAY YES

BUSINESS & TRADE DIRECTORY

Bob's Fish Market - THE BEST IN QUALITY AND SERVICE. OATFISH - LIVE OR DRESSED. DISCOUNT ON ORDERS OVER \$0.00. CALL IN ADVANCE FOR LARGE ORDERS. 283-2338 Dam-B, Texas

La Linda Dance Studio Old Livingston Hwy. Jazz, Ballet, Tap, Acrobat, Gymnastics. Director: Linda Paula Aylen. Ages: Pre-school-Adults. Member: Dance Educators of America. 283-2164

SEGREST GUN SHOP BUY, SELL, TRADE, REPAIR 283-5301 GUNS. 2 Miles S. Woodville, Hwy 69

Gordon's Electric Gordon W. Toler, Owner. 969-2560 Day Or Night. In Woodville call 283-3722

Guaranteed Roofing New Roofing & Re-roofs 20 years experience. Painting & Repair Work Free Estimates. "No job too small no job too large" call 969-2313 J. Goins

Sears The Quick & Easy Way. Service Calls & Telephone Shopping. 283-3756. Owned and Operated by Dorothy Norton

Order your Season's Greater Bouquet Today! Margaret's Flower Shop. ARTS & CRAFTS, KNITS & STITCHERY. 283-2714. 708 MAGNOLIA WOODVILLE, TEXAS 75797

Powell Exterminating Company Now Call Your Local Woodville Exterminator 283-3836. License No. 2765-97. Free Estimates. Foundation Repairs and House Leveling. Certificates. 283-5264. 400 North Magnolia, Woodville, Texas

Pratt's Carpet Installation 20 Years Experience. All Installation Guaranteed. "Don't Take A Chance" Call Pratt 499-5240

Academy of Dance New Nighttime Ballet, Jazz, Tap, EXERCISE CLASS. Tues. & Thurs. 7:30-8:30. Yvonne Byran. Register Now by Calling 207 W. Bluff 283-5226 or 283-5224

Radio Shack WORLD'S LARGEST ELECTRONIC STORE. Tyler County's Finest For C.B.A. Stereo, radios, Parts, C.R. and T.V. Antennas and Accessories and All Electronic Equipment. Electronic Repairs. 283-5264. 400 North Magnolia, Woodville, Texas

WOODVILLE AUTO CLINIC PAINT AND BODY SHOP. A. Hill House 201 HYDE WOODVILLE, TEX. 75797 283-3266

HWY 69 SO.
WOODVILLE, TEXAS

JACKPOT NOW \$450



We Have A
Good Selection
of
Christmas
Trees

PORK SALE...
PRICES FOR DEC.
6-13, 1977

**NEUHOFF LONESTAR
FRANKS**
12 OZ. **49¢**

QTR. LOIN SLICED
CHOPS
LB. **89¢**

CENTER CUT
LOIN CHOPS
LB. **\$1.39**

LEAN COUNTRY STYLE
SPARE RIBS
LB. **99¢**



FRESH PORK
LINKS
LB. **\$1.59**

CENTER CUT
RIB CHOPS LB. **\$1.29**

LIBBY NAT. SWD OR
JUICE 8 OZ. **39¢**

BACON ENDS 3 lbs. **\$1.29**

FRYERS USDA WHOLE OR BASKETS LB. **37¢**

FRYER PARTS

BREASTS lb. **79¢**
LEGS & THIGHS lb. **79¢**
LIVERS & GIZZARDS lb. **79¢**

BANQUET
POT PIES
8 OZ. **4/99¢**
DINNERS 11 OZ. **59¢**

7-SEAS GREEN GODDESS, CREAMY ITALIAN

DRESSING 8 OZ. **59¢**

VLASIG POLISH

DILLS 32 OZ. **69¢**

PETER PAN PEANUT

BUTTER 12 OZ. **69¢**

WAGNER

DRINKS 32 OZ. **39¢**

HUNTS TOMATO

JUICE 46 OZ. **59¢**

LUCKY LEAF APPLE

SAUCE 25 OZ. **59¢**

Cut Up Double Breasted

FRYERS lb. **49¢**

WESSON
OIL
48 5/8 OZ. **\$1.89**

HUNTS
KETCHUP
32 OZ. **79¢**

DEL MONTE
SWEET PEAS 17 OZ. **3/89¢**

HUNTS HALVES AND SLICED

PEACHES 29 OZ. **59¢**

DEL MONTE C/S OR W/K

CORN 17 OZ. **3/89¢**

DEL MONTE CUT GREEN, FRENCH GREEN, AND KITCHEN SLICED

BEANS 16 OZ. **3/89¢**

GEISHA (STEMS AND PIECES)

MUSHROOMS 4 OZ. **49¢**

HUNTS WHOLE OR STEWED

TOMATOES 300 **2/89¢**

HUNTS TOMATO

SAUCE 8 OZ. **5/89¢**

PILLSBURY PLUS
CAKE MIXES 18 OZ. **59¢**

VAN CAMP
PORK & BEANS
16 OZ. **4/99¢**

12 OZ. **59¢**

16 OZ. **59¢**

GRITS

OATS

LIBBY ROAST BEEF OR CORNED
BEEF 12 OZ. **99¢**

SHORTENING
SNOW-DRIFT 48 OZ. **\$1.49**

CLEANSER
COMET
4/14 OZ. **99¢**

LIQUID
JOY
22 OZ. **89¢**

HORMEL
VIENNAS
5 OZ. **3/99¢**

BETTY CROCKER
R.T.S. FROSTING 16 OZ. **89¢**

RONCO ELBOW
MACARONI 12 OZ. **39¢**

LAWRY
CHILI MIX 1 OZ. **2/59¢**

COLD CAPS
CONTACT 10 CT. **\$1.39**

MARYLAND CLUB
COFFEE LB. **\$2.79**

FRISKIE
DOG FOOD 25 lb. **\$3.89**

BRIGHT EYES
CAT FOOD 4 cans **99¢**

SUNKIST
NAVEL
ORANGES 8 CT. **99¢**

WASHINGTON FANCY
RED DELICIOUS
APPLES 3 LBS. **99¢**

US No. 1 TO
COUNT RUSSET
POTATOES 4 LBS. **99¢**

LARGE HEAD
LETTUCE 3 HEADS **99¢**

HYDE PARK
TOWELS 2 rolls **89¢**

CANDY FILLED STOCKINGS
Buy 1 - Get 1 FREE

CHEERIOS
CHEERIOS 15 OZ. **79¢**
*AT BIG STAR STORES
*LIMIT 1 PER FAM.
*OFFER EXP. 12-13-77

PILLSBURYS No. G-1737-9-20
FLOUR 5 LB. **59¢**
*AT BIG STAR STORES
*LIMIT 1 PER FAM.
*OFFER EXP. 12-13-77

SAVE VALUABLE COUPON
GIANT SIZE
89¢
(WITH \$7.99 PURCHASE)
*LIMIT 1 COUPON PER PURCHASE