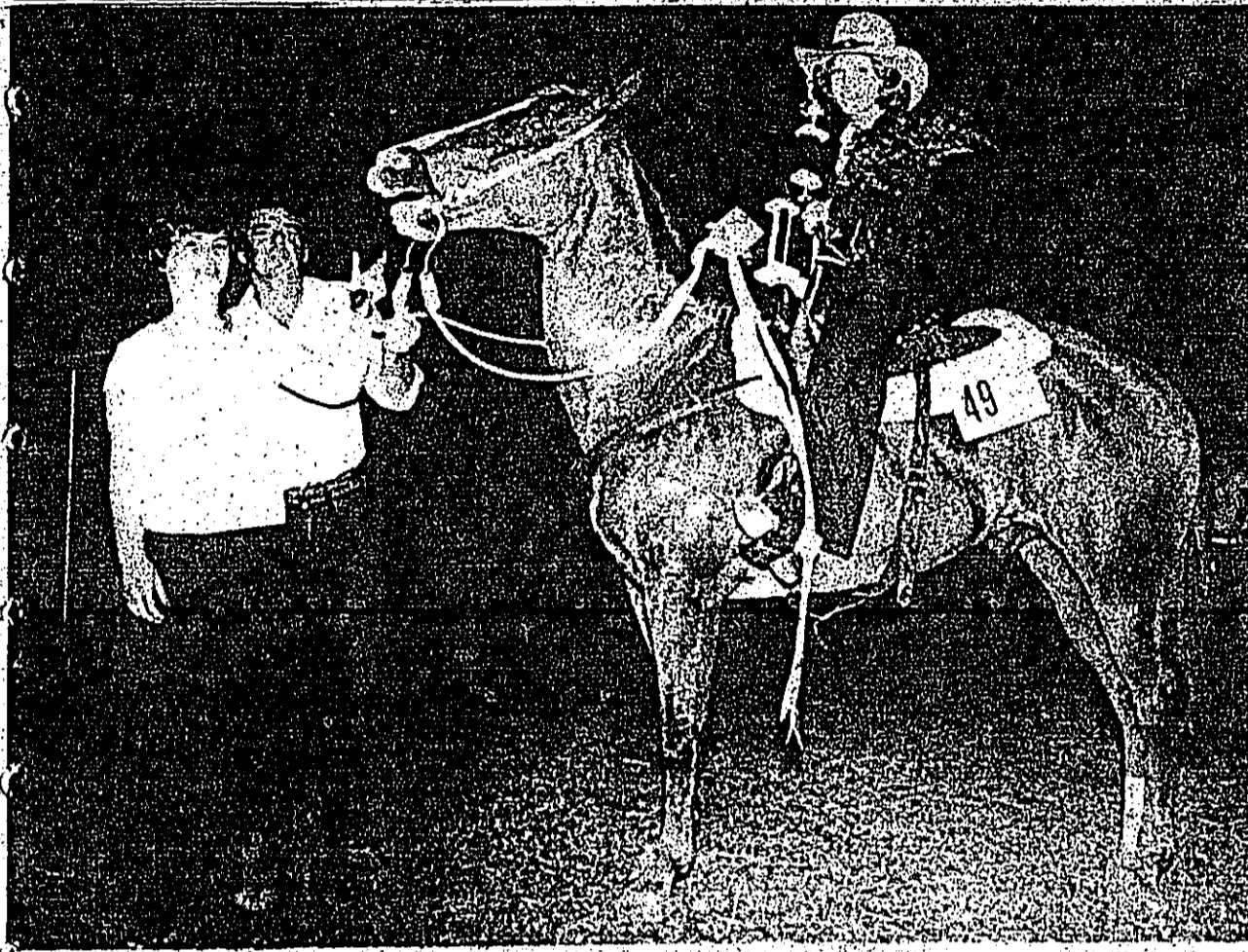


Subscribe To The Booster

The Tyler County BOOSTER

Vol. 51 No. 33 3 Parts 30 Pages Thursday, August 17, 1978 15¢
Woodville, Texas 75979

"Serving Tyler County Since 1930"



RODEO QUEEN—With trophy and roses and sitting atop her horse, pretty Kelly Conner, of Woodville is shown Saturday night after being named Woodville Lions Club Rodeo Queen. The contestant is shown with her proud parents Mr. and Mrs. Lamar Conner.

Tax Ratio Raised

The ratio of tax assessment for Tyler County will be raised, after approval by the Tyler County Commissioners Court Monday. The raise will be for the benefit of the road and bridge department, and will not be finalized until the 1979 budget is approved.

The decision to raise the ratio of assessment was in conjunction with an agreement to lower taxes paid to other departments, so that overall county tax rates stay about the same. The request was for an increase from 28 percent to 35 percent.

Value of the decision will not be known until later this month, when the 1979 budget is completed. The decision to ask for the raise came because the road and bridge department cannot "break even," according to Ann Fondren, county auditor.

The commissioners also approved Sheriff Lewis Craven's request to seek government funding to provide for 24 hour jailer service. State law requires a jailer on duty continuously.

Craven is seeking help from a Comprehensive Em-

ployment and Training Act program to hire two more jailers. It is doubtful that the CETA grant would be a permanent fund, though.

Approval was given for right-of-way on pipeline for four oil wells in Precinct 4 to the Mosbacher Production Co. of Houston. Approval was given only after an addendum was agreed to that guaranteed all future work done on the pipelines would be paid for by the company and not by the county.

The commissioners gave approval to the air control board to put on an air show during October. They also adopted a resolution to formally request \$28,193 in lateral road funds. The money would be used for construction and road improvement.

The Airport Committee was granted permission to build a terminal at the airport. Joe Riley represented the committee at the meeting and voiced the need for restrooms and other services a terminal would provide.

In a special meeting on Friday, Aug. 11, the commissioners approved widening

Highway 92 at the Spurger school. The state highway department asked for 200 feet to lay a 24 inch drainage pipe. It will cost approximately \$5000 to lay.

Bids on the road paving project for the Beaumont Hill

Road will be accepted and opened on August 31. Judge Allen Sturrock was appointed, for two years, to the Board of Directors of the Mental Health and Mental Retardation Services.

Commissioners Table \$58,672 Bid

Tyler County Commissioners Tuesday voted to table for further study a \$58,672.55 bid from Thomas C. Forrierty for plans and construction of an enlarged tax office and voted also to retain the Tax Appraising firm of Truitt F. Pritchard and Associates of Houston as the official tax appraisal firm for Tyler County for the next two years.

The move to hire the tax firm was accomplished with a \$1,200 increase in cost-of-services to the company which had been working on a retainer of \$2,500 per year.

The court also heard a report from Carl Nichols on work nearly completed on a highway study for Tyler County and voted to table the study for the County Highway Committee till the next regular meeting in September.

The meeting Tuesday was designed by commissioners to encompass a Tax Equalization Board hearing also which was attended by representatives of the utilities, gas, oil, railroad and electric companies. Representatives included: H.E. Striedel, Sam Houston Electric; Francis Kirkland, Sun Pipeline Co.; George W. Houk, Texaco, Inc.; Len Capdevielle, Southern Pacific Railroad; Karen Pace

(continued on Page 3)

Briscoe Signs Tax Relief Package

By MIKE & JUNE SIDORIC
Booster Capitol Bureau

After weeks of wrangling, debates, and bitter floor fights, tax relief is going to the voters November 7.

In an historic move, Governor Dolph Briscoe late Monday gave his approval and support to HJR 1, the package of constitutional amendments that could provide over \$500 million in tax relief next year.

Calling the package "meaningful relief" for homeowners, Briscoe signed the bill allowing it to be placed on the November 7 ballot.

Tyler County Representative Jim Browder hailed the tax relief proposal as a "victory for working people."

Browder said that he was especially glad to see agricultural values play an important role on the legislation. "Farm-

ing and timber values are vital to our area's economy, with this tax package, the people of District 16 really stand to benefit."

"Homeowners, elderly, disabled and farmers and ranchers all stand to get substantial tax relief if we get voter approval," Browder cautioned, "not everyone is voting to take this issue.

State Senator Roy Blake of Nacogdoches, who is glad the session is over, is not really sure that the relief is meaningful. "While we have made a few gains here and there, there is still no great bonanza," Blake would not comment whether he would support the legislation. If the voters approve the comprehensive tax package in November, relief would first be felt next fall when property taxes are assessed.

Briscoe had already signed HB 1 that will repeal the sales tax on home utility bills and raise inheritance tax exemptions to \$200,000.00 per estate, saving the tax payers over \$491 million in the next two years. These measures become law September 1, with savings being felt almost immediately.

Another aspect of the constitutional amendment package is a controversial section "limiting state spending." The proposal will limit the rate of appropriations from state revenues not dedicated by the constitution not to exceed the growth rate of the state economy. The legislature would reserve the right to implement the restriction by

law and could nullify it by resolution declaring an emergency.

The compromise tax reform section ruled out state wide standards for property tax assessment and procedure, and prohibits state wide appraisal of real property. The administration and enforce-

ment of uniform standards would have to originate in the county where the tax is levied.

The amendment would also direct local assessors to remove from their tax base such intangible property as bank deposits and stocks and authorize the legislature to exempt household goods and personal autos from taxation.

Another section would place in the constitution a requirement that local prop-

erty taxes be raised only after formal notice and hearings.

To offset the tax base loss to local school districts, the house and senate passed and sent to Briscoe a bill (HB 57) setting up a \$450 million "School Taxing Ability Protection Fund" to reimburse school districts for any

Any questions on this proposed amendment to the Texas State Constitution, which the voters will be called to decide on November 7 should be directed to your State Representative or Senator. You can contact them by writing Representative Jim Browder, Room 110C, State Capitol Bldg., Austin, Tex. 78711 (512-475-3932) or State Senator Roy Blake, State Capitol, Austin, Texas 78711 (512-475-2671).

School Bells Ring

Chester ISD

Chester Independent School District Schools will start class on Monday, August 28 at 8:20 a.m., according to David Malone, superintendent. Teachers in the school district will start work on August 24.

The schools will offer breakfasts to the students who want them. Price for breakfasts is 25 cents. Extra milk is eight cents. Lunch for students in grades K-6 will be 55 cents. Grades 7-12 will pay 60 cents for lunch. There will be free lunch and reduced lunch forms sent to all students on the first day of school, Malone said.

New students can register before the 28th at the superintendent's office, or on the first school day at their principal's office.

Warren ISD

Students attending school in Warren will start Monday, August 21 at 8:30 a.m., according to Adolf Hryhorchuk, superintendent. Teachers will start working on August 17, he said.

Students attending Warren schools will be able to eat breakfast at the school if they so desire. Breakfasts will cost 30 cents for all students. The lunch program will have three different prices. Children in grades K-5 will pay 50 cents, grades 6-8 will pay 55 cents and grades 9-12 will be charged 60 cents for lunch.

New students can pre-register or wait until the first day of school. Registration is at the appropriate campuses. A shot record is required of all students attending school.

Spurger ISD

The first day of school for Spurger School students will be Monday, August 28. Teachers will return for inservice and preparation on August 24th and 25th. Any new students to the community, kindergarten registration or high school students wishing to change their last year's registration, may come by the school on August 24th or 25th. Principals will be available both days to register or help any students or parents wishing information.

Breakfast will be offered this year for the first time in the Spurger Elementary School. Elementary students will be offered breakfast for 25¢ during the first 30 minutes of each school day. Students that have been part of the free lunch program will receive a free breakfast.

Students living closer than one mile of the school will no longer be offered bus service. School policy will be to avoid extra stops and starts within one mile of the school due to overcrowded bus loads and increased traffic on highway 92.

The school times for this year will be the same as past years: 8:00 a.m. to 3:15 p.m. The first day of school will be a full day with the cafeteria serving both breakfast and lunch.

Colmesneil ISD

All students, (K thru 12), of the Colmesneil School District will report for school Tuesday Aug. 22 at 8:00 a.m. for a full day of school. Buses will run regular routes and lunchroom will be open for breakfast and lunch. Breakfast will be served for high school students from 7:40 a.m. until 8:00 a.m. and elementary

will eat breakfast after 8:00 a.m. Prices for lunches will be 50¢ for high school students, (grades 7 thru 12), and 40¢ for elementary students (K thru 6). Breakfast will be 20¢ for all students.

Any students enrolling in the Colmesneil School for the first time will register Monday Aug. 21 from 10:00 a.m. until 12:00 noon and from 1:00 p.m. until 3:00 p.m. Kindergarten students who have already registered need not report until Tuesday August 22.

Woodville ISD

The schools of the Woodville Independent School District will open for all students on Monday, August 28; teachers begin their work year on Thursday, August 24, according to Tom P. Linam, school superintendent. Pre-school registration for all senior high school students new to Woodville Public Schools, or who attended Woodville schools last year but failed to register before the end of school in May, should register now at the principal's office in the Kirby High School Annex Building. Junior high school students new to Woodville should register the week of August 21-25 at the principal's office in the Wheat Junior High School Building. Students who attended the fourth grade in the Woodville Public Schools last year do not need to register for the fifth grade even though they move from one campus to another. Students in grades 2-4 who are new to the Woodville schools may enroll August 21-25 at the principal's office on the elementary school campus.

All new first grade students and all kindergarten students that haven't previously registered should report to the elementary school for enrollment on Friday, August 25, from 9-11:30 a.m. at the elementary lunchroom. Monday, August 28, will be the first day of classroom instruction, and will be the first day that school buses will operate.

The lunchrooms of the district will begin operation Monday, August 28. Lunch tickets will be available for pupils K-4 for \$2.25 per week or 45¢ per day. Lunch tickets for pupils in grades 5-12 will be \$2.50 per week or 50¢ per day. This year, for the first time Woodville Public Schools will offer breakfast at the lunchrooms. The serving time will be from 8:10 to 8:30 a.m. No pupils or adults will be served breakfast after 8:30 a.m. Prices will be 30¢ per student at 45¢ per adult. All bus students will unload and go directly to the lunchroom if they plan to eat breakfast.

Pupils who register in kindergarten or first grade will be required to have birth certificates in order to establish eligibility for registration. Pupils new to the Woodville schools should have grade, book and credit records, as well as vaccination and health information from previously attended schools, ready at registration time.

State law requires that all pupils entering and attending the public schools of Texas must have been immunized against diphtheria, tetanus, poliomylitis, measles, rubella, and pertussis subject to provisional admittance if the required immunizations have been started, as certified by a physician.

Attendance in the public schools of this state is compulsory for all pupils ages 7 through 17, for a minimum of 165 days of the regular school term. Attendance in kindergarten is optional. Pupils who are 5 years old on or before September 1 are eligible to attend kindergarten, while students who are 6 years old are eligible to enroll in the first grade. The kindergarten program of the district will operate on a single semester basis, with the oldest 5 year old students attending the first semester.



'HOT SPOT'—A mobile home fire on Railroad Street in Southeast Woodville summoned the Woodville Volunteer Fire Department at about 10:30 p.m. Monday. According to Fire Marshall Alva Cook, approximately 1,500 gallons of water were used on the blaze which was considered a "total" loss to Edward (Tex) Lewis, owner of the home. Cause of the fire according to Cook was listed as "unknown." Firemen surmise that the blaze originated in the bedroom which was considered the "Hot Spot" when the firemen arrived.

Backed Down Again

Often over recent years U.S. diplomats have, in effect, been squelched by the Russians; it recently happened again.

The U.S. arrested two Russian spies in New York employed at the United Nations. The Russians warned that if the men were not sent back home, they would take similar action against one or more Americans in Russia. The Russians said such affairs had been handled quietly by the two governments in recent years, that Washington was departing from this policy in publishing the arrest of the two Russians.

Washington quickly denied that claim. Then, soon after the Russians arrested an American business man in Moscow, Washington backed down and agreed to release the two Russians in return for the release of the American held in Moscow. The Russians had warned the State Department exactly what it would do, and did it.

Media & Warrants

A considerable flap resulted from recent Supreme Court rulings in effect, set limits on the special rights of the press, and which allow law enforcement officers to obtain search warrants to search newspaper offices in similar circumstances.

The unanimous Supreme Court ruling which held that it is not a basic constitutional right to inspect jails and visit inmate prisoners is less controversial than the decision on search warrants.

Searching a media office is abhorrent to many in the industry. But search warrants are not to be other business or private establishments. The special media argument is that if confidential records can be examined, so search warrants, the confidentiality of such records should be compromised and that sources are exposed.

What then is more important that newsmen have the right to protect their sources or the right to reveal sources to solve a case? If search warrants are granted, and if newsmen do not cooperate, the sources by data placed on file in offices, some form of confidentiality is likely to be retained, since newsmen are seldom forced to reveal their sources in court and sometimes are forced to make their point.

This right is more important than newsmen have defined and, unfortunately, in this television age the courts must surely further define such rights. The three television networks, if they can sell the idea to the "average" viewer, and if necessary do not cooperate, their records and tapes are available, will have included film an insular status. There have always been hundreds of thousands of newspapers. Today the biggest media means are from three commercial television networks, all headquartered in New York City. Does the country want these three networks' news offices to be off limits to law enforcement officers?

They are already in the documentary business, treating crime and other news as if it were a commodity. They are already in the documentary business, treating crime and other news as if it were a commodity. They are already in the documentary business, treating crime and other news as if it were a commodity.

STATE CAPITAL HIGHLIGHTS

By Lyndell Williams
TEXAS PRESS ASSOCIATION

House - The House passed a bill to create a new state agency to coordinate the state's economic development efforts. The bill also provides for the creation of a state economic development council.

Senate - The Senate passed a bill to create a new state agency to coordinate the state's economic development efforts. The bill also provides for the creation of a state economic development council.

Legislation - The Legislature passed a bill to create a new state agency to coordinate the state's economic development efforts. The bill also provides for the creation of a state economic development council.



BEN SARGENT

THIS MESSAGE BROUGHT TO YOU BY YOUR FRIENDLY FAMILY TIMBER INTERESTS, FAMILY AGRIBUSINESS CORPORATIONS AND FAMILY LAND SPECULATORS...

U.S. Families: Holding On

Family life in America is strong and well withstanding many of the modern day society's changing values, according to a new survey of 202,000 people. The attitude if apparent in answers to a survey conducted by Better Homes and Gardens magazine titled "What's Happening to the American Family."

Family life in America is strong and well withstanding many of the modern day society's changing values, according to a new survey of 202,000 people. The attitude if apparent in answers to a survey conducted by Better Homes and Gardens magazine titled "What's Happening to the American Family."

Morality & America

In the final analysis, the fate of this country depends on the honesty and fairness of the average citizen. Fleeced leaders, the government, big business, etc., don't keep the American dream alive or healthy.

The Tyler County BOOSTER

JOHN P. MORRISON, Publisher/Editor
GAIL MORRISON, Business Manager/Advertising
JANICE WILKINS, Office Manager/Advertising
PAT MCKEE, Typesetter/Subscriptions
TIM KRAUSE, Reporter
BOBBY EASON, News/Photo/Sports
DON WOOD, News/Photo/Sports

TEXAS PRESS ASSOCIATION MEMBER 1978

Alan Miller's T-WHEELER

By ALAN MILLER, Director, Public Information Temple, Texas, Incorporated

Saw a little news item in one of the area papers the other day that the last street sweeper in Portland, Oregon would be retiring soon.

Some of you from larger cities may remember them from years past. A two-wheeled push cart supporting a metal drum, pushed by a man carrying a big broom.

Then, I got to thinking. That fell out in Portland may have officially retired from his duties on the city payroll, but his counterparts live on all over the country.

Meantime our waste is someone else's profit. Those who take the time to search the road sides may be turning a little profit, and the countryside look the better for it.

Health care for the elderly was controversial and so was the cost of health care in general. Respondents express concern over the spiraling costs and focus rapidly on money.

The Consumer Alert

AUSTIN—If you haven't at least thought about taking up your real estate, you're missing out on a big opportunity.

After you buy a home, you can take each home as you see it and instantly recall the location, price, construction, number of rooms, heat, fuel, taxes, and financial requirements.

After you buy a home, you can take each home as you see it and instantly recall the location, price, construction, number of rooms, heat, fuel, taxes, and financial requirements.

After you buy a home, you can take each home as you see it and instantly recall the location, price, construction, number of rooms, heat, fuel, taxes, and financial requirements.

National Agriculture Teachers Association

TEXAS

Classcock Receives Award

JOE M. CLASSCOCK, Vocational Agriculture Teacher, Woodville, is presented an engraved gold watch for 34 years of service to the Vocational Agriculture program in Texas.

Commissioners

continued from Page 1

35 percent County Judge Allen Sturrock said, "Our Assurance to you is that we won't be excessive, we'll operate in an efficient manner. The problem is in the road and bridge tax rate assessment from 28 to 30."

Dr. Gary E. Tatum Optometrist

ROOM 107 - Wednesday 9 a.m. - 5 p.m. WOODVILLE INN

GLASSES FITTED 283-3011
REPAIR WORK ON FRAMES
COMPLETE EYE EXAMINATION
Call any weekday for appointment

Real Estate

By Eleanor M. Holderman REALTOR

Looking? Keep A Record

Buying a home is a big investment and involves major decisions. So it's understandable why so much time and care is taken when looking for a home that's right for you.

PINES THEATRE

On the Square - Woodville

FRIDAY - SATURDAY & SUNDAY August 18-19-20

7:30 & 9:30

American Graffiti

Woodville Travel

OUR SERVICES ARE 'FREE' TO YOU

* RESERVATIONS FOR DOMESTIC - INTERNATIONAL TOURS
* AIRLINE TICKETS
* CRUISES - AMTRAK
* HOTELS RENT-A-CAR RES

Dale Fox (owner) - Esther Carroll (mgr.) - Lynn Hays (agent)

283-2586

312 WEST BLUFF - WOODVILLE

LET US PLAN YOUR NEXT BUSINESS TRAVEL OR VACATIONS

Nutrition Director Sought For Elderly Meal Program

The Governing Board of Pineywoods Nutrition, Inc. is searching for a Nutrition Project Director. A three-county program to provide hot, nutritious meals for the elderly is expected to be initiated in early fall of 1978, serving more than 3,200 meals per year.

Fellowship Breakfast Hosted By FGBFI

The newly organized Full Gospel Businessmen's Fellowship International will have a fellowship breakfast Saturday, Aug. 19 at 8 a.m. at the Woodville Inn.

'The Revelation' To Give Final Performance

A special music service by "The Revelation" will be held at the Baptist Church of Woodville Sunday, August 20, at 7 p.m.

Sewer Plant Construction Begins Monday

In a busy session Monday night, the Woodville City Council ordered a lengthy 14-item agenda which featured as an important item a decision to begin Monday with construction on a new sewer plant.

Bank Organizers Issue Statement

Following formal application procedures, with the Texas State Banking Board on Monday, July 3, the organizers of a proposed Community State Bank in Woodville have issued a statement.

Engagement Announced

Mr. and Mrs. Doyle Luther of Beaumont announce the engagement and approaching marriage of the daughter, Stacy Lynn Luther, to Robert E. Spurger, son of Mr. and Mrs. Robert E. Spurger, Sr. of Beaumont, formerly of Spurger.

Morman Church Starts New Branch

Because of the growth of the church membership in Fred, the Church of Jesus Christ of Latter-Day Saints (Mormon) has started a new branch there. The meetings are held at the Franks Branch Community Chapel in Fred.

Colmesneil Family Visits In/Hodges Gardens

A wide variety of annuals are adding summertime color to Hodges Gardens, famous Tuesday through Sunday (Mormon) has started a new branch there. The meetings are held at the Franks Branch Community Chapel in Fred.

New Arrivals

Ray Ferrell Dobbins
Jennifer Ann Triplett

Mr. and Mrs. Wesley Ray Dobbins are proud to announce the birth of a son, Ray Ferrell, on August 15, 1978 at 8:53 a.m. at the Medical Center Hospital in Columbus, Georgia. He weighed 8 pounds and 8 ounces and was 21 1/2 inches long. Paternal great-grandmother is Mrs. Mrs. Jewell Philmon of Woodville.



JENNIFER ANN TRIPLETT

Mr. and Mrs. Kyle Triplett of Woodville are the parents of a daughter, Jennifer Ann Triplett, born Sunday, August 13, in Tyler County Hospital. Grandparents are William and Carolyn Triplett of Houston and Mr. and Mrs. George Wishkoff, also of Houston. Great-grandparents are Mr. and Mrs. Chuck Stamps of Woodville, Mr. and Mrs. Stash Wishkoff and Mr. and Mrs. Wallace Zeinick, Mrs. Ezra Eaves of Woodville is the great-grandmother. The new arrival weighed 7 pounds, 11 1/2 ounces and was 19 inches long.

MANN FURNITURE

Whirlpool 17' Refrigerator (no frost) \$378.88 w/t
14' Refrigerator \$298.00 Washer \$268.00
5,000 BTU Air Conditioner \$219.00

Direct Furniture Showcase
322 N. Magnolia, 283-9211

Office Supply Center

AB Dick Supplies
"All your office supply needs"
Telephone Answering Service
501 W. Bluff 283-5164

THE HARTFORD

YOUR Woodville AGENT FOR YOU

Globe-Mann Ins. Agency
Woodville, Texas - Call 283-2528
Tom McQuire, Mgr.

Woodville Travel

OUR SERVICES ARE 'FREE' TO YOU

* RESERVATIONS FOR DOMESTIC - INTERNATIONAL TOURS
* AIRLINE TICKETS
* CRUISES - AMTRAK
* HOTELS RENT-A-CAR RES

Dale Fox (owner) - Esther Carroll (mgr.) - Lynn Hays (agent)

283-2586

312 WEST BLUFF - WOODVILLE

LET US PLAN YOUR NEXT BUSINESS TRAVEL OR VACATIONS

Woodville Travel

OUR SERVICES ARE 'FREE' TO YOU

* RESERVATIONS FOR DOMESTIC - INTERNATIONAL TOURS
* AIRLINE TICKETS
* CRUISES - AMTRAK
* HOTELS RENT-A-CAR RES

Dale Fox (owner) - Esther Carroll (mgr.) - Lynn Hays (agent)

283-2586

312 WEST BLUFF - WOODVILLE

LET US PLAN YOUR NEXT BUSINESS TRAVEL OR VACATIONS

Woodville Travel

OUR SERVICES ARE 'FREE' TO YOU

* RESERVATIONS FOR DOMESTIC - INTERNATIONAL TOURS
* AIRLINE TICKETS
* CRUISES - AMTRAK
* HOTELS RENT-A-CAR RES

Dale Fox (owner) - Esther Carroll (mgr.) - Lynn Hays (agent)

283-2586

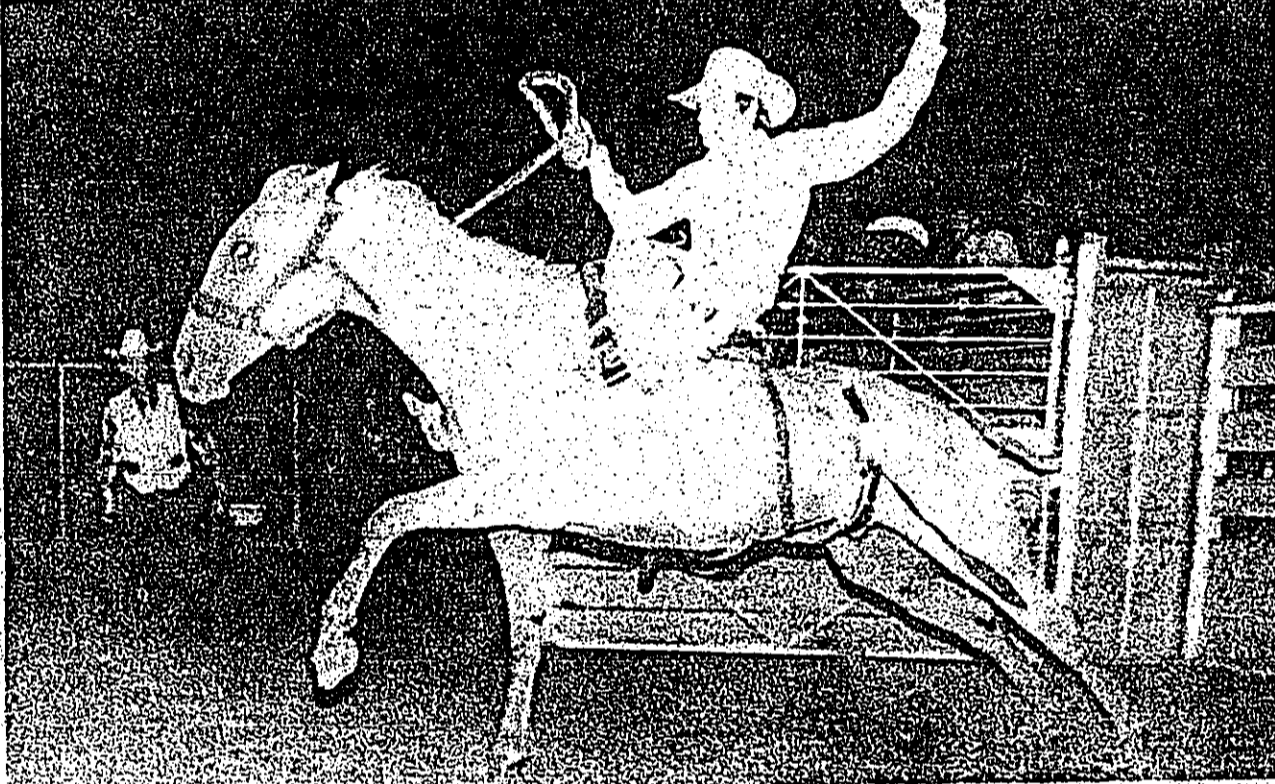
312 WEST BLUFF - WOODVILLE

LET US PLAN YOUR NEXT BUSINESS TRAVEL OR VACATIONS

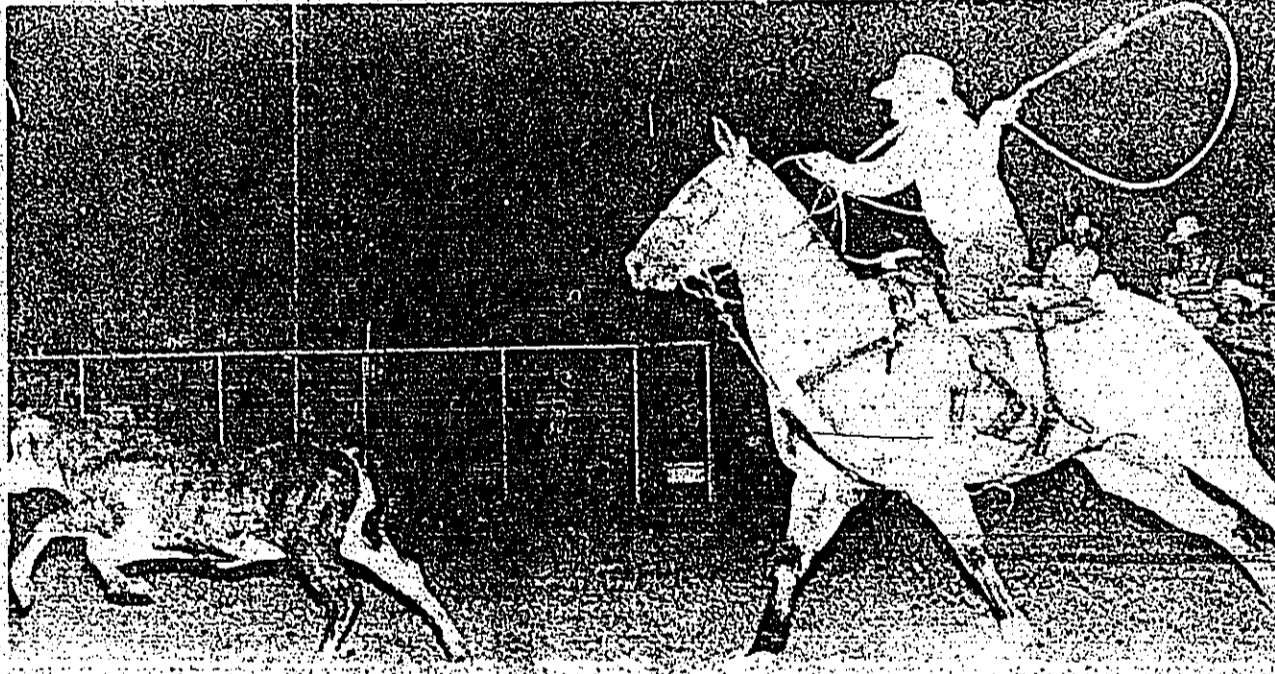


THE GOAT SCRAMBLE is the kid's favorite, as they chase down the animals and earn a trophy if they succeed.

Rodeo Scenes 78



THIS COWBOY seems to be posing, but he is actually trying to stay on his horse during the Bareback Bronc competition.



CARL GULLORY of Pineville, La. was the winner in the calf roping competition with a time of 10.2 seconds. Gullory won \$588, first prize.

ame Baylor Univerisity :1845

matters had far that Tryon ere appointed to go before Congress and ter for the school. Under these two men, ed the charter 1845. President and signed it.

on of a name did not seem to be at any charter was by the Texas sen - a name osen. The submitted to on. They had to consult with brethren. The name had to be chosen at once or the securing of the charter postponed.

"Baylor suggested the name 'Tryon,' giving his reasons that the thought of establishing a Baptist University in this country originated with Tryon," and that thus far he had been the strongest instrumentality in giving the enterprise its success. But Tryon demurred, saying that he had had so much to do with bringing the enterprise forward that he feared it might be thought that he was working for his own honor, and so it might injure the prospects of the school." So he took the charter and wrote in the blank space 'Baylor'.

"Baylor most vigorously and earnestly protested, on two grounds. 'First,' as he said, 'I do not think I am worthy of such distinction; second, my humble donation (he had given \$1,000, the largest amount given by anyone) might be misunderstood and the motives prompting it misconstrued.' But Brother Tryon and Kenneth L. Anderson, vice-president of the Texas Republic, were inflexible. They were determined upon it. This accounts for the name 'Baylor'.

"Let no one conclude that the name was unworthily bestowed. If the name 'Tryon' was first, the name 'Baylor' was certainly a close second. The Education Society came from a suggestion of Baylor. The definite school came as a suggestion from Tryon. Tryon seconded Baylor's efforts in building up the society. Tryon was first corresponding secretary and then vice-president. Baylor seconded Tryon's efforts in building up the school. Baylor was the largest of all contributors of money. Tryon was the largest of all contributors of influence. Baylor dedicated the charter, while Tryon wrote it. They were both eminently worthy of the name."

There are at least two stories about the naming of Baylor University. The major story was related in this account. Another version relates that valous members of the Texas Congress suggested in 1845 "Milam" and "San Jacinto" as names, until one legislator moved to name the institution for Judge Baylor, and his motion was accepted. The two versions may each tell a part of the actual story. In any case there appears, in retrospect, to have been a strong chance that generations of the graduates of Texas' oldest University might easily have found themselves marching in "That Good Old" San Jacinto, Milam, or Tryon Line.

Warren News

AUCTION
Every Friday Night at 7:30 p.m.
105 Elm St. Woodville, Texas
Bring the merchandise you wish to sell in on Thursday or Friday.
283-8872 - 283-2197 - 283-3923
Prizes given to the buyers holding the lucky tickets.
Commission charge on merchandise sold.

Visitors in the home of A.Y. Collier over the weekend were John and Pat Collier Swanson and son Robert, Al Cauten, Glenda Devlin, Ola Hatton, Mary Jean Johnston, Peggie McCollum, Bevie Lee Riley, Faye Simpson, Shirley Samford, and Rita Waco Tuesday. They are Betty Cauten, Glenda Devlin, Ola Hatton, Mary Jean Johnston, Peggie McCollum, Bevie Lee Riley, Faye Simpson, Shirley Samford, and Rita Waco Tuesday.

Trees, Trees, Trees
That's our only business. Let us remove those dead or unwanted trees. We also top, trim, & feed.
For free estimate call 837-2684
Tyler County Tree Service
Where we go out on a limb for you

While the Pastor of the Methodist Church is on vacation Rev. Jim Chatham from Lamar University at Beaumont fills the pulpit for him.
Mildred Collier, a former student of Warren High School will go to Houston from St. Elizabeth Hospital for treatment. Mildred is seriously ill.
The ones that are home from different hospitals are: Thelma Royer from Tyler County Hospital, Mrs. Yates Griffin from Tyler County Hospital, Ruth Lazenby from Women and Children Hospital and Patti Swanson of A.M. College Station. The John Swanson's are moving to Tyler, Texas from Nashville, Tenn.

Sallee Graduates SHSU
Rosemary Johnson Sallee graduated from Sam Houston State University on August 12 with a Bachelor of Arts in Teaching degree. She is the daughter of Rev. and Mrs. Ernest Johnson of Livingston and the granddaughter of Mrs. Mary Reese of Warren.
She has also been on the Honor's List of Academic Achievement at Sam Houston State University in the fall of 1976.
She and her two children, Angela and Jason, will reside near Livingston where she will be teaching second grade this fall.

Chit-Chat
From The WCC
Michael and David sang for us residents. Ruby Langley and Johnnie Harrison served w. hotcakes for the party. We would like to thank all of you for being with us. Residents celebrating birthdays were Anita Ball, Phoebe Johnson, Gussie Knight, Jimmie Kirkland, Polly Penn, Ed Segrest, Lola Wallace and Etia Williams.
Our dance really turned out great last week, as our home was jammed full with visitors. We would like to

after you see your doctor...
bring your prescription to
Bobb's Prescription Shop
100 W. BLUFF WOODVILLE, PH. 283-2072

Don's Meat Market
Sunday-Open 9 a.m.-1 p.m. 202 N. Magnolia 283-3729
Fresh Headless Shrimp medium size
Bacon.....lb.....79¢ or 25 lb. case for \$17.50
Ground Meat lb. \$1.29
Ground Chuck lb. \$1.49
Sirloin Tip Roast lb. \$1.79
Pike's Peak Roast lb. \$1.49
Half beef cut & wrapped for freezer lb. \$1.29
Crown Roast lb. \$1.39
Chuck Roast lb. \$1.39
Hind Quarter lb. \$1.39
Cut & Wrapped for Freezer
Guaranteed Fresh Grainfed Heavy Beef
Now Making Po-Boy Sandwiches Each 99¢
Bread-Cookies - Buns
Bargains on LUNCH MEAT and CHEESE
Register for FREE meat. Register each week. Clip coupon and drop in box at our store for free drawing each week.
Coupon
Name _____ Address _____
Phone _____

Now Open Sarah's Kitten's Corner
Pottery Macrame Supplies
Hobby Supplies Gifts
Art Supplies - all kinds
Homemade Fake Fur Dolls
429-3919
FM 1746 (Old Town Bluff Rd.) 10 mi. E. of Woodville

Seperates Popular In School Clothes
COLLEGE STATION—Separates and layering are in vogue for back-to-school clothes...
Service, The Texas A&M University System. Layering of separates provides the warm or cool comfort necessary for those fall-changing school day temperatures. Lightweight absorbent fabrics—challis, gauze, chitz, gabardine and gingham checks—are favorites in cotton and cotton blends, she continues. Corduroy or look-like corduroy give denim a run for popularity in boys pants, she adds.

EAGLE CONTRACTING CO. INC
283-2579
312 W. BLUFF WOODVILLE, TEX.

EAGLE CONTRACTING CO. INC. is planning to construct an office building with office space to lease and also a mini-storage warehouse facility with space to lease.
If you are interested in leasing space in either, or both, please reply on the form directly below indicating the amount of space you would be interested in.
NAME _____
NAME OF COMPANY _____
TELEPHONE NUMBER _____
ADDRESS OF COMPANY _____
I AM INTERESTED IN _____ SQ. FT. OF LEASE SPACE.
OFFICE BUILDING () MINI-STORAGE WAREHOUSE ()

We Want To Build your New Home! On Your Land Or Ours
We have lots and acreage available
Let us repair or remodel your present home!

TYLER COUNTY HOUSING SURVEY
A rental housing project is being planned for this community. This project would provide comfortable living at reasonable rates. If you are interested in living in such a project please fill out the following. This information does not obligate you in any way, but it will place you on the list of persons to be notified when units are available.
1. What age group are you in? 62 or over () 50-61 () Under 50 ()
2. Marital status: Married () Single Man () Single Woman ()
3. Number of persons in your household ()
4. Annual Income:
\$3,000-\$5,000 () \$5,000-\$7,000 ()
\$7,000-\$9,000 () \$9,000-\$11,000 ()
\$11,000-\$13,000 () \$13,000 and over ()
Does your income include: Old Age Assistance-SSI () Social Security () Veterans Pension () Other ()
If Other, specify _____
5. Do you own () or rent () present residence? If you own present residence, answer these questions: Is the house too large for retirement living ()? Are the grounds too large for retirement living ()? How far from town do you live () miles. If you become a tenant of this project will you sell or rent your present residence ()?
6. Do you live in a house (), Apartment (), Room (), Farm () Town ()?
7. Is your present housing modern (), Not modern, but adequate (), Inadequate (). If inadequate, in what respect _____
8. What type of apartment do you prefer?
Efficiency apartment ()
One bedroom, kitchen, bath, living room ()
Two bedroom, kitchen, bath, living room ()
Specially equipped for physical handicap ()
9. What amount of rent can you pay if utilities are included?
\$90-\$100 () \$110-\$130 () \$130-\$150 () \$150-\$175 () Over \$175 ()
10. Would you want to maintain your own yard () Flower garden ()
11. Would you be willing to move into an apartment if it were available about July, 1979? Yes () No ()
12. If you live outside of this County, do you plan to retire here Yes () No (). Will you move here if an apartment becomes available? Yes () No (). If the answer is No, at what date do you plan to move to this County?
Name _____ Address _____
MAIL TO: Eagle Contracting Co., Inc.
P.O. Box 409, Woodville, Texas 75979
Survey forms are available at 312 W. Bluff, Woodville.

TELL 'EM YOU SAW IT IN THE TYLER COUNTY BOOSTER, Thursday, August 17, 1978 Page 3-B

Clean Sweep

48's FINE FARE EXTRA ABSORBENT DISP. DIAPERS \$3.99

All TIMEX WATCHES \$3.00 OFF

EARTH BORN SHAMPOO 8 OZ. \$1.99 VALUE FOR \$1.09

DESENEK OINT. 1.8 OZ. \$2.99 VALUE FOR \$1.59

RIGHT GUARD SPRAY DEO. 5 OZ. \$2.06 VALUE FOR 99¢

AIM TOOTHPASTE 4.6 OZ. \$1.72 VALUE 87¢

BAYER Aspirin 100's 77¢

METAMUCIL 14 Oz. \$5.04 VALUE FOR \$2.69

AQUA VELVA AFTER SHAVE 6 OZ. \$2.10 VALUE FOR \$1.19

CRICKET and BIC Disp. Lighters \$1.49 Value 2 FOR 99¢

SAVON DRUGS
106 S. Charlton 283-2163 Woodville, Texas
"OUR NAME IS OUR MOTTO"

S
T
S

WHERE YOUR MONEY REALLY ADDS UP
5.25% Regular Passbook Account Equals
5.39% Annually Compounded Daily
Interest Paid From Date Of Deposit To Date Of Withdrawal
8%
8 Year Certificate
\$1,000 Minimum
YIELDS 8.33% With Daily Compounding

Annual Yield	Rate	Amount
8.06%	7.75%	\$1,000 on 6 year certificates
7.79%	7.50%	\$1,000 on 4 year certificates
6.98%	6.75%	\$1,000 on 2 1/2 year certificates
6.72%	6.50%	\$1,000 on 1 year certificate
5.39%	5.25%	Passbook Account Dividends Paid from date of deposit to date of withdrawal

A Substantial Interest Penalty Is Required For Early Withdrawal From Certificate Accounts

Member of:
Federal Savings & Loan Insurance Corporation
Federal Home Loan Bank System
United States Savings & Loan League
Texas Savings & Loan League
Supervised by:
Texas State Savings & Loan Department
Federal Home Loan Bank Board

SOUTHEAST TEXAS SAVINGS and Loan Association
P.O. Box 936 Woodville, Texas
Two New Locations To Open Soon In Livingston And Kountze.

WOODVILLE *
\$40,000
MAXIMUM INTEREST FOR ACCUMULATED SAVINGS
BY FEDERAL SAVINGS AND LOAN INSURANCE CORP.
Serving All Of Southeast Texas
283-3747

Subscribe to the BOOSTER

I Bank At First State Bank of Colmesneil Because



owner Jimmy Wayne Davis Jimmy's Auto Parts Colmesneil

First State Bank of Colmesneil

FDIC Highway 69 9 Miles North of Woodville

Children Need Sufficient Iron

Not enough calories or selected nutrients in the most common cause of iron deficiency in United States preschoolers...

JARROTT'S PHARMACY

Back to School HEADQUARTERS

We have the complete supply list Bagged and Ready To Go

Whisperings From Holiday Pines

This week at the Holiday Pines activities were sort of slow, but the residents were not bored...

ART AWAY FOOD SAVINGS from Grammer's Grocery

- 283-2520 1403 W. Bluff Woodville AUGUST 17-18-19 12 oz. Orange Plus...99¢, Trappys Cut Okra & Tomatoes...2/99¢

WHERE YOU SAVE DOES MAKE A DIFFERENCE

8% 8 Year Certificate \$1,000 Minimum YIELDS 8.33% With Daily Compounding

Money Market Certificates: 1/4 of 1% above 6 Month Treasury Bill rate. \$10,000 minimum.

- 7 3/4% 8 Year Certificate \$1,000 Minimum YIELDS 8.66% With Daily Compounding

JASPER FEDERAL SAVINGS AND LOAN ASSOCIATION

Home Office 271 East Lamar 384-2596 Woodville Branch 1008 W. Bluff (713) 283-3716

Colmesneil News

By LOU ELLA MOSELEY On Friday evening at 7:00 in the Community Center, Colmesneil...

ART CLASSES

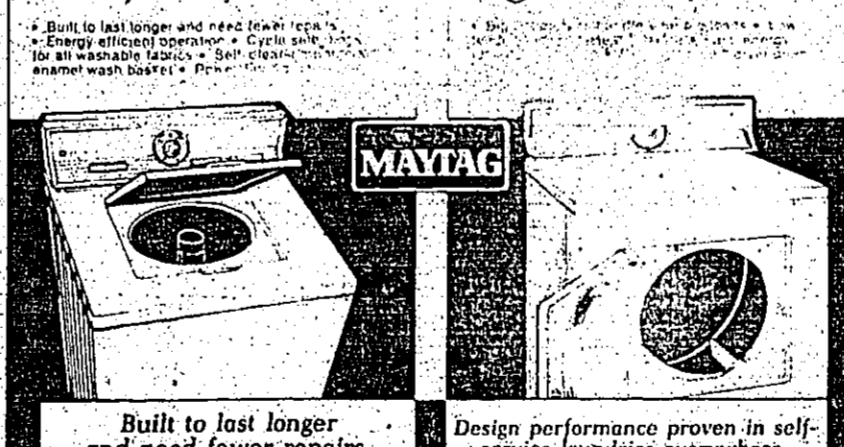
Birdie Gray Beginning August 15 Wednesday Morning 9 a.m. - 12 noon

Carolyn Ruthstrom staff artist

Beginning August 16 Tuesday Evening 6:30 - 9:30 P.M. Woodville Gallery

LABOR DAY Back-to-school SALE on MAYTAG

SAVE-SAVE on a MAYTAG heavy duty washer SAVE-SAVE on a MAYTAG big load dryer



FINAL CLEARANCE on discontinued models of Maytag Dishwashers!

We must make room for new goods, so hurry and save. SAVE on MAYTAG Dishwashers

McClure Furniture 305 N. Magnolia 283-2519

Hillister News

By Mrs. W.G. HAYNES Mr. and Mrs. Clinton Collier enjoyed a visit Sunday in Huntsville with their daughter...

MF forklifts speed the goods over rough terrain.

Choice of MF 4500 and MF 6500 models, built for 4500 lbs. and 6500 lbs. lift capacity, respectively.



See us to see one in action! MF Massey Ferguson

JO-BE EQUIPMENT 283-2541 1114 S. Magnolia

Johnny Harris, Jr. 405 S. Magnolia Woodville, Texas 75979

Texas S Bar W Ranch 2nd Annual Simmental Production Sale

August 26th, 1978 - 1:00 P.M. At the Ranch, Near Chester, Texas

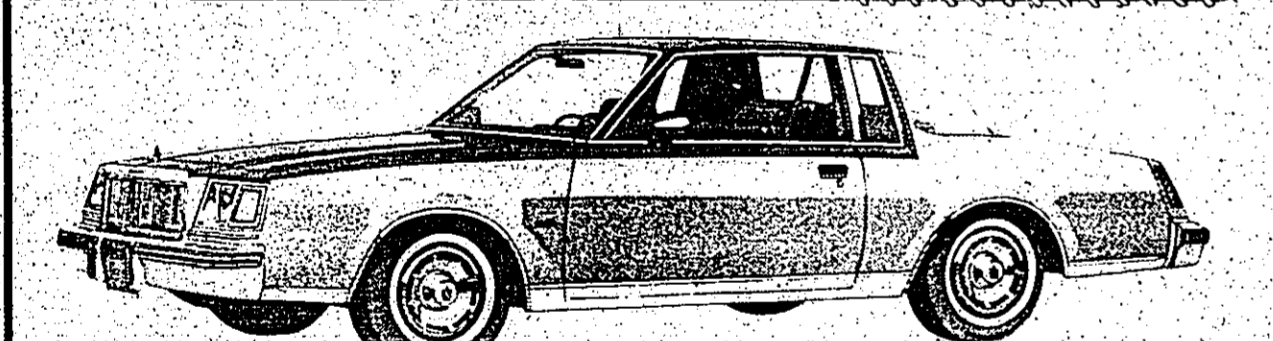
Lunch served at 12:00 Noon Sale at 1:00 P.M. The 100 Lot Sale Includes the following: A Full Sister to EXTRESSA

Your Choice of Two SIGNAL 100% HEIFERS Paid up in the 1978 Rio Vista Futurity

3-100% COWS 17-PUREBREDS BRED To Cojac, Proto and Counselor 20-OPEN PUREBRED HEIFERS

SW Ranch S BAR W-RANCH BOX 12 WOODVILLE, TEXAS 75979

BIG SAVINGS FOR BACK TO SCHOOL



1978 Buick Regal 2 door Coupe V-6, automatic transmission, tinted glass, air conditioned, power disc brakes...

reasonably priced at List \$6536** DISCOUNTED \$5898**

GOOD CLEAN BACK-TO-SCHOOL USED CARS!

- 1974 Pontiac Bonneville 4 door, clean, automatic, air, power \$1995

WHY PAY MORE? A AND M MOTORS 605 S. Magnolia 283-2534

**Jasper CC
Mini-Olympics
Next Week**

The Jasper Chamber of Commerce is sponsoring the 1978 Miscular Dystrophy Mini-Olympics, to be held Saturday, August 26th on the vacant lot next to the Pine-wood Plaza Shopping Center.

Money raised from the mini-olympics will go to the Miscular Dystrophy Association of Jasper for the continued research and treatment for those stricken with this disease. Anyone wishing to enter may register prior to each event beginning at 8 a.m. Saturday, August 26. The entry fee is \$1 per event.

Trophies will be awarded for first and second place in each of the seven events. The Olympics will include: Skateboard, frisbee, washers and horseshoe competition as well as a three-legged race, egg toss and balloon toss.

The trophies will be presented to the winners of each event. Monday, September 4 on American Cablevision, Channel 2, live from Klear Motors, site of this year's telethon and pledge center.

Energy

**Line In
Operation**

Area residents can now get answers to questions concerning energy with a phone call, thanks to the "Energy Hot Line" available at Gulf States Utilities Company district offices.

By coming into the office here in Woodville, and using the telephone to dial the "Hot Line," anyone can get a fast answer to his questions on energy," said Jack Ogden, G.S.U. Consumer Service Representative.

Ogden explained that a person can come into the district Extension 3333, and get the main Energy Information Center located in the company's Beaumont office. Information on all types of subjects ranging from insulating the home to conserving energy and many other areas is available from the system.

"We feel people want information about energy, and this is a way to get them that information quickly," Ogden added.

Gulf States has also set up this service in its district offices in Anahuac, Hall, Dayton, Silsbee, Vidler and Orange.

Good Food

Attitude

Aids Health

COLLEGE STATION—Positive, wholesome and healthy attitudes about food can prevent weight and health problems from childhood to adulthood.

Young children have sporadic eating habits just like adults, says Bobby Johnson, family life education specialist with the Texas Agricultural Extension Service, The Texas A&M University System.

Appetites tend to coincide with the child's age and stage of development. For example:

(1) The infant is growing fast and probably has a big appetite.

(2) During the second year, growth as well as appetite slow down. A built-in mechanism tells the toddler when and what to eat, and this varies in time each day.

If a nutritious selection of foods is available, children will generally choose to eat what they need. This does not mean, however, that they will select a balanced diet out of an assortment of non-nutritious foods.

(3) Toddlers may get off on a "binge" and eat a lot of one particular food, such as peanut butter, for a while. This will not damage a child's health during a short period.

(4) Preschoolers ages 3 to 5 tend to have narrow food preferences. They may not want their food sprinkled with mushrooms or onions.

The trick to foods they are familiar with, so introduce new foods gradually and without pressure.

Never force a child to eat certain foods or demand a clean plate after each meal, the specialist advises.

Eating habits are formed in early childhood and carried into adulthood, she adds.

MONEY WINNERS

PLAY... \$100,000 BINGO

ADULTS ONLY!

No obligations... Nothing to buy! Just visit your Brookshire Bros. store often—The more free game numbers you collect, the better your chance of winning!

WIN UP TO \$1,000

LOOK AT THESE NEW WINNERS

PRIZE	NUMBER OF PRIZES	ODDS CHART	ODDS 13 VISITS	ODDS 26 VISITS
\$1,000	12	138,339	10,641	5,321
100	36	37,282	1,331	665
20	109	15,230	1,172	586
10	354	1,922	148	74
5	2,292	725	56	28
1	26,585	63	4,8	2,4
TOTALS	29,928	56	4,3	2,2
TOTAL CASH VALUE OF PRIZES			\$70,465.00	

AT... **Brookshire Bros.** THE BEST FOR LESS

Katherine Sangster \$100.00 Winner
Larry King \$1000.00 Winner
Leona Oliver \$1000.00 Winner

Area Farmers Aid Survey

Farmers in Tyler County have been doubling as statisticians in completing questionnaires which become essential links in the sophisticated economic structure of Texas agriculture, Commissioner Reagan V. Brown said today.

The county's producers were part of some 30,000 farmers across the state who recently responded to the mid-year surveys on summer acreage and production conducted by the Texas Crop and Livestock Reporting Service. The results of the survey will be issued in an August 10 report which is available free of charge.

"Without the availability of unbiased, accurate figures through cooperation between Texas farmers and the Reporting Service, business and government agents from one end of the state to the other would suffer in their ability to predict coming trends and act accordingly," Commissioner Brown said.

He explained that farmers themselves use the estimates as working tools in determining upcoming production decisions. At the same time, the information is used by farm organizations and legislators in planning and administering programs by extension economists and private farm management consultants in advising farmers, and by almost the link in the agriculture service industry in allocating resources.

Banks and investment corporations also round out their economic profiles of counties through the use of the crop and livestock statistics.

"From the individual who sells fertilizers or designates railroad car placements to the government agent who makes decisions on crop payment programs, everyone in the agricultural production chain needs and uses the information made available through this continuing cooperative effort," Brown said.

And at the bottom line, of course, is the agricultural producer himself, who reaps the benefits of informed agricultural industry better able to minimize the drastic ups and downs which can translate into unpredictable supplies and prices, Brown concluded.

Wexford BEVERAGEWARE

ANCHOR HOOKING

This Week's Special

49c

Footed Sherbet

SPECIAL SAVINGS EACH WEEK ON FEATURED ITEMS

CRISCO ALL VEGETABLE SHORTENING

3 LB. CAN

\$1.69

LIMIT ONE W/750 PURCHASE OR MORE

TOWELS HI-DRI PAPER

BIG ROLLS

39c

FOLGER'S COFFEE

LB. CAN \$

LIMIT ONE W/750 PUR. OR MORE

2.29

BROOKSHIRE BROS. GRADE A DOZ EGGS

53c

EXTRA STAMPS

WITH THIS COUPON AND \$5.00 Or More Purchase (Excluding Cigarettes)

COUPON EXPIRES August 22, 1978

One Per Family

BACON CHIPS 3/4 OZ. SIZE **89c**

TISSUE 49c

3 ROLL PKG. (18" X 10")

GATORADE REFRESHING DRINK

ORANGE OR LEMON LIME

QUART **55c**

PRINGLES COUNTRY STYLE POTATO CHIPS

CAN **99c**

TUNA STARBUCK CHUNK

WATER OR OIL PACK 8 1/2 OZ. CAN **69c**

BRIQUETS SQUIRREL CHARCOAL

10 LB. BAG **\$1.19**

DETERGENT HY-TOP

ALL PURPOSE WHITE OR HEAVY DUTY

GIANT SIZE **99c**

EXTRA STAMPS WITH THIS COUPON AND PURCHASE OF Pkg. 10 Glad Trash Bags

COUPON EXPIRES August 22, 1978

Neuhoff Harvest Brand HOT LINKS

Lb. **79c**

Unbeatable meats!

ROUND STEAK USDA CHOICE HEAVY BEEF

Lb. **1.49**

Brookshire Bros. Slab SLICED BACON

Lb. **1.29**

Unbeatable produce!

Thompson Seedless **GRAPES** Lb. **57c**

Large Romain **LETTUCE** Head **39c**

Vine Pink **TOMATOES** Lb. **39c**

Unbeatable frozen foods!

Lynden Farm **FRENCH FRIES** 2 Lb. Bag **39c**

Kitchen Treat **MEAT PIES** (CHICKEN BEEF TURKEY) 6 Oz. Size **19c**

Dessert Topping **COOL WHIP** 9 Oz. Size **73c**

Mrs. Pauls **FISH STICKS** 9 Oz. pkg. **99c**

Totinos **PIZZAS** PEPPERONI CHEESE SAUSAGE HAMBURGER 15 Oz. Size **89c**

GROUND BEEF Premium Quality Lb. **\$1.39**

WILSON WESTERN STYLE **BEEF FRANKS** Lb. **\$1.69**

ROEGELEIN VAC. SMOOKED **BACON SQUARES** Lb. **\$1.09**

CLAUSSEN SWEET-CHIP-MORRIS-HALVES **PICKLES** JAR **\$1.19**

OSCAR MAYER COTTO-PICK-PIK-PIK-SALAMI OR **LUNCH LOAF** 8 OZ. **99c**

OSCAR MAYER BREAK-FAST **BACON** Lb. **\$1.79**

BAR CHEESE Kraft Wax Lb. **\$2.29**

LUNCH MEATS Brookshire Bros. Pound Lb. **\$1.39**

FRANKS Roegelein Quality 12 Oz. Pkg. **89c**

USDA CHOICE HEAVY BEEF

TOP **ROUND STEAK** Lb. **\$1.69**

SIRLOIN **TIP STEAK** Lb. **\$1.99**

TENDER **BONELESS STEW** Lb. **\$2.99**

DELICIOUS **EYE-OF-ROUND** Lb. **\$2.89**

BEEF **CUBE STEAKS** Lb. **\$2.29**

BONELESS **RUMP ROAST** Lb. **\$1.89**

TENDER **STEAK FINGERS** Lb. **\$2.29**

(FROM TIP) **BUTTON STEAKS** Lb. **\$2.29**

PICNICS Roegelein Meaty 3 Lbs. **\$4.98**

OSCAR MAYER BEEF-REG-CHEESE **SMOKEYS** 12 OZ. **\$1.69**

OSCAR MAYER REG-BEEF-CHEESE **WIENERS** Lb. **\$1.49**

SMOKEY MAPLE **RATCH BACON** Lb. **\$1.89**

HORMEL CURE #1 **BNLS. HAMS** Lb. **\$2.69**

CARLTON'S PIMIENTO **SPREAD** 14 OZ. **\$1.49**

PEACHES Large California Lb. **49c**

Large California **NECTARINES** Lb. **49c**

Fresh Green **CUCUMBERS** 3 for **49c**

POTATOES 5 Lb. Bag **59c**

Hy-Top Garden Sweet **PEAS** Cream or Whole 303 Cans **\$3.19**

Delta **TISSUE** 4 Roll Pkg. **69c**

Mixed **VEGETABLES** 303 Cans **\$3.19**

Colgate **TOOTH BRUSH** Save 30¢ Each **39c**

Hard Soft Medium

Colgate **DR. PEPPER** 6 quart bottles **\$1.49** limit 6 please plus tax & dep.

Colgate **TOOTH BRUSH** Save 30¢ Each **39c**

Hard Soft Medium

Colgate **DR. PEPPER** 6 quart bottles **\$1.49** limit 6 please plus tax & dep.

DOUBLE TUESDAY

With \$2.50 Or More Purchase (Excluding Cigarettes)

THESE PRICES GOOD AUGUST 16-22, 1978

FOOD STAMPS Welcome!

Brookshire Bros. THE BEST FOR LESS

North Charleston Woodville

Disposable Douche **GENTLE SPRING** 12 Oz. **55c**

Raid Yard Guard **INSECT SPRAY** 16 1/2 Oz. Can **\$2.69**

Automatic Dishwasher **CASCADE** 35 Oz. Size 10" off label **\$1.09**

PUBLIC NOTICE

1. Irma H. Hickman, Tax Assessor-Collector for the Woodville ISD, in accordance with the provisions of Section 20.03 (c) of the Texas Education Code have calculated the maximum tax rate which may be adopted by the Board of Trustees of the Woodville ISD without holding a public hearing as required by Section 20.03 (d) of the Texas Education Code. That rate is as follows:

*2.04 per \$100 of assessed value

Irma H. Hickman
Tax Assessor-Collector
August 15, 1978
33-2c

Notice is hereby given that the Tyler County Commissioner's Court will hold its annual Proposed Budget Hearing, August 30, 1978 at 2:00 p.m. in the Commissioner's Courtroom of the Tyler County Courthouse.

Under discussion will be the Federal Revenue Sharing Budget for 1979. Anticipated appropriation is \$144,630.00. Suggestions for the use of these funds may be submitted orally or in writing.

Allen Struxock
Tyler County Judge
33-1c

NOTICE TO BIDDERS

Sealed bids addressed to the County of Tyler, for the following:

ADVERTISED FOR BIDS
Project No. CDRG 88-77-01-45-0000
Tyler County, Texas

Separate sealed bids for Asphalt Cement (AC-5), Cut-Back Asphalt (MC-80 and MC-20) and Aggregate Surface Treatment (200 Class A, Type A, Grade 4 & 5) for paving Beaumont Hill Road located off FM 1013, Tyler County, will be received by the Honorable Allen Struxock, County Judge at the office of the County Judge located in the Tyler County Courthouse until 10:00 o'clock A.M. on August 31, 1978 and then at said office publicly opened and read.

The information for Bidders, Form of Bid, Form of Contract, Specifications, and other contract documents may be examined at the following Office of the Honorable Allen Struxock, County Judge, Tyler County Courthouse, 100 Courthouse, Woodville, Texas 75797.

Copies may be obtained at the office of County Judge located at Tyler County Courthouse, 100 Courthouse, Woodville, Texas 75797.

The owner reserves the right to waive informality or to reject any or all bids.

No bidder may withdraw his bid within 30 days after the actual date of the opening thereof.

Allen Struxock, County Judge
will be received in the office of the County Clerk, County of Tyler, Texas, Courthouse, Woodville, Texas, until 10:00 a.m. on Thursday, 31 day of August, 1978 at which time and place all bids received shall be opened and read.

Further information and details are available in the office of the County Clerk, County of Tyler, Texas. The County of Tyler reserves the right to reject any or all bids and to waive informality.

GRACE BOSTICK
County Clerk
Tyler County, Texas
33-2c

THE STATE OF TEXAS
COUNTY OF TYLER

CITATION BY PUBLICATION TO THE UNKNOWN HEIRS OF ETHELYN COLLIER, DECEASED, AND TO THE HEIRS OF ETHELYN COLLIER, DECEASED, SURVIVING UNDER LEGAL LIABILITY

You and each of you are hereby commanded to appear before the County Court for Tyler County, Texas at the Courthouse in Woodville, Texas by filing a written contest or answer in the cause styled THE ESTATE OF ETHELYN COLLIER, DECEASED, CAUSE NO. 4322, pending before the County Court of Tyler County, Texas in Woodville, Texas, before the first Monday following the expiration of 60 (60) days after the date hereof, to determine who are the legal heirs of Ethelyn Collier, deceased.

DATED the 11th day of August 1978.

JOHN E. KINNEY
Attorney for the Estate
409 South Magnolia
Woodville, Texas 75797
283-3704
33-11c

In obedience to the order of the Board of Equalization regularly convened and sitting, notice is hereby given that said Board of Equalization will be in session at its regular meeting place in the Courthouse in the Town of Woodville, Tyler County, Texas at 10:00 o'clock A.M. on the 15th day of August, 1978, for the purpose of determining, hearing and equalizing the value of any and all parcels of land, improved or unimproved, owned, leased, or having business with said Board and hereby notified to be present.

The Board has set aside the following date for:

Aug. 15, 1978 10:00 A.M. RR. Pipelines, Oil
Aug. 28, 29, 1978 Individuals
Aug. 30, 1978 Timber Companies
Time for individuals 9:00 to 12:00 a.m.
Time for others 10:00 to 12:00 a.m.

Tyler County, Woodville, Texas
25 day of July, 1978. Grace Bostick,
County Clerk, Tyler County, Texas.
33-2c

BIG STAR MEAT
5/99¢

BIG STAR SKIPPY PEANUT BUTTER
99¢

BIG STAR GENERAL FOODS INTERNATIONAL COFFEES
\$1.69

BIG STAR MAXWELL HOUSE COFFEE
1 LB. 2/79¢

BIG STAR CONTADINA TOM. SAUCE
5/89¢

BIG STAR KETCHUP
69¢

BIG STAR LIBBY'S PEAS & CARROTS
3/99¢

BIG STAR VAN CAMP PORK & BEANS
3/89¢

BIG STAR HYDE PARK CORN
3/99¢

BIG STAR HYDE PARK CORN FLAKES
75¢

MILLER'S

COOL WHIP

4 1/2 Oz. 49¢

Ever Fresh Jelly or Glazed

DOUGHNUTS 69¢

ORANGE JUICE 32 Oz. 69¢

LOWFAT MILK 1/2 Gal. 79¢

COTTAGE CHEESE 12 Oz. 59¢

AMERICAN CHEESE 12 Oz. 99¢

SALAD DRESSING 32 Oz. 69¢

SANDWICH SPREAD 32 Oz. 89¢

LIMA BEANS w/BACON 3/99¢

CORN BEEF HASH 15 Oz. 79¢

TOMATO JUICE 32 oz. 59¢

SPAGHETTI 16 Oz. 2/89¢

LONG GRAIN RICE 28 Oz. 59¢

DRINKS 12 Oz. 6/99¢

PEACH, APRICOT, PEAR NECTAR 32 Oz. 69¢

CELERY Bunch 39¢

WHITE ONIONS 2 lb. 39¢

CALIFORNIA SANA ROSA PLUMS lb. 39¢

SWEET JUICY PEACHES lb. 39¢

MEDIUM YELLOW ONIONS 2 lb. 39¢

LETTUCE LARGE HEAD 39¢

ENTER EACH WEEK.

WIN FREE CASH

JACKPOT NOW \$1600

Alma Smith did not have her card punched.

MOTOR OIL

BIG STAR

Heavy Beef Boneless CHUCK ROAST
LB. \$1.39

Heavy Beef Boneless CHUCK STEAKS
LB. \$1.49

Heavy Beef Boneless STEW MEAT
LB. \$1.49

Heavy Beef Boneless CUTLETS
LB. \$1.99

LIQUID PALMOLIVE 32 oz. \$1.19

ALKA SELTZER 25 ct. 89¢

DIAL Soap 7 Oz. 39¢

GAIN Detergent 49 Oz. \$1.39

CALGONITE 50 Oz. \$1.29

TISSUE 4 Roll 75¢

TOWELS Roll 2/89¢

GARBAGE BAGS 30 ct. 69¢

TOOTH PASTE 4.7 Oz. 69¢

HYDE PARK CORN FLAKES 18 oz. 75¢

DECKER SMOKED PICNIC
Lb. 75¢

BACON ENDS 3 Lb. \$1.48

HOT LINKS Lb. 89¢

FRANKS 12 Oz. 89¢

BOLOGNA Lb. 99¢

TURKEY NECKS Lb. 39¢

IVORY 4 1/2 oz. BARS 69¢

A & W ROOT BEER 12 oz. 6/99¢

VIENNAS 5 oz. 3/99¢

200 FREE STAMPS
WITH \$7.50 OR MORE GROCERY PURCHASE

AT BIG STAR STORES

County Gets Oil-Gas Boost

The multi-billion dollar boost that oil and gas industry operations gave to the Texas economy in 1977 was shared by the counties that Tyler County is one of.

The marketed value of petroleum production in the county has been calculated at \$15.7-million in an economic activity profile of the state's top producing counties prepared by the Dallas-based Texas Mid-Continent Oil & Gas Association.

"Texas' oil and gas industry remains the cornerstone of the economy of the state and of many of its counties," said the Association's president, H.B. (Hank) Hamilton, Allen, independent producer and drilling company executive. "It is imperative that the state maintain taxing and regulatory policies which will encourage the growth of this industry."

Tyler was one of 201 counties last year which produced petroleum with a marketed value of \$100,000 or more. The county ranked 135th in the estimated total value of petroleum produced. The Association has computed that some \$6 million came from the production of 666,900 barrels of crude oil, with approximately \$9.7 million attributed to a net output of 10.7 million MCF of natural gas. Payments last year to owners of royalty in the county were calculated at \$2 million.

While paying local, county, and state property taxes, producers in the county also helped support state government through production tax payments estimated at \$1 million. This included \$277,300 from crude oil output \$725,300 from natural gas.

The search for additional petroleum continued in Tyler County last year. Oil and gas drillers spent an estimated \$5.5-million in the drilling of 20 wells, including four classified as wildcats. Some \$3.1 million of that amount was lost in 13 dry holes. The seven strikes included three oil wells and four gas wells.

'On The Road To Clean Air'

Summer means fun at the beach or camping in the woods. But traffic jams coming and going spoil some of the fun. And plenty of pollution.

According to the American Lung Association, there are more cars than ever on the roads. More than 100 million of them. Despite the ongoing energy crunch, the high cost of gasoline, and increasing congestion.

Cars are one of the chief causes of air pollution. But a few years ago, it seemed as if cleaner air could be around the corner. The Clean Air Act set specific standards to reduce by 90 percent all hydrocarbons, carbon monoxide, and nitrogen oxides. It was supposed to happen by 1975; but it didn't turn out that way. The auto makers received extensions four times on meeting those standards. Now the deadline has been delayed until 1981. Six long years.

In 1975, though, the dual catalytic converter was installed on every car on the assembly lines in this country. But the converter reduced only hydrocarbons and carbon monoxide. Not nitrogen oxides and photochemical oxidants. And a study by the Chicago Department of Environmental Control uncovered some startling results about the converters. The Department tested a number of cars during the first year of operation and found: fully 44 percent of the 1977 Chryslers tested failed to meet the city's clean air standards; and about a third of the Ford and General Motors cars tested didn't meet them, either.

Cars and catalytic converters need ongoing inspection and maintenance. A new film produced by the American Lung Association, "On the Road to Clean Air," assisted by a grant from the Environmental Protection Agency, shows how inspection/maintenance programs conserve fuel, increase motor efficiency, and cut air pollution.

To find out more about curbing pollution, contact your local American Lung Association—the "Christmas Seal" people. They care about every breath you take. Especially in hot summer traffic.

City Upholstery

**Now Under
New Management**

Dorman L. Taylor

New Owner

Open:

Monday - Friday 8 a.m. - 5 p.m.

Saturday 8 a.m. - 12 noon

1305 W. Bluff

Woodville

283-3788

Agriculture Briefs

PREPARE FOR WINTER PASTURES—Late August and early September are the best times for early planting of winter pastures, notes a forage specialist with the Texas Agricultural Extension Service. The cereal grains, including oats, wheat, rye, and barley, can be planted early while shallow overseedings of Gulf pennum and clovers should be postponed until late September. Nitrogen is the key element for winter pastures and should be applied at a rate of 50 to 100 pounds of actual nitrogen per acre at planting and again in late February.

BEEF COWS NEED PHOSPHOROUS THE YEAR ROUND—Beef cows need phosphorus in their diets for efficient reproduction as well as overall performance, point out specialists with the Texas Agricultural Extension Service. This means that a mineral supplement should be provided at all. The supplement should contain 8 to 15 percent phosphorus and no more than this amount of calcium. Cheap, high-calcium minerals are not beneficial.

RAILROAD CROSSING DEATHS—The number of deaths at the nation's railroad crossings is climbing after a steady decline during the last 10 years. This increase in baffling many experts in accident prevention since most railroad crossing accidents occur during daylight hours, in clear weather, and when both the train and motor vehicle are traveling at less than 30 miles per hour. A safety engineer with the Texas Agricultural Extension Service surmises that many of the accidents occur because motorists simply ignore flashing lights or automatic gates at railroad crossings.

GILMARTIN JOINS EXTENSION STAFF—John A. Gilmartin has been named a county official's program specialist with the Texas Agricultural Extension Service. He will be working with Charles E. Lawrence in formulating and carrying out educational programs for elected county officials of Texas. He has been an assistant county attorney for Hood County for the past two years. Before that he served as an adult probation officer with the Dallas County probation department.

ACCIDENT CONTROL—Although most people view their home as a haven from hazards of the outer world, they suffer more accidental injuries there than anywhere else, notes the Texas Agricultural Extension Service. People can make their home safer by operating equipment according to instructions in service manuals, inspecting electrical and heating systems periodically, and keeping walkways and stairs free of tripping hazards.

Back-to-School

Ladies DRESSES **1/2 price** **New Shipment of FALL COATS Lay-A-Way NOW!**

One Group CENTER STAGE

Ladies PANTSUITS sizes 8-18 Reg. \$20⁰⁰ **\$8⁸⁸**

Junior PANTS **\$10⁸⁸**

Girl's White SHOES SANDALS **1/2 price**

Junior SPORTSWEAR WRANGLER BOBBIE BROOKS **30% off**

Junior SHORTS **1/2 price**

Men's Short Sleeve SHIRTS **20% off**

Junior DRESSES ACT I JONATHAN LOGAN sizes 3-15 **1/2 price**

Boy's and Men's Nylon JOGGERS **\$4⁸⁸-\$10**

Men's Nylon JOGGERS **\$10⁸⁸**

BIRDWELL'S of Woodville

Senior Citizens Begin Angelina Workshops

Senior Texans in the Deep East Texas Area are taking part in a series of workshops on the Angelina College campus this summer.

The purpose of these workshops is to provide the participant with the skills necessary to assist the dependent aged person in their home setting.

Workshop content includes understanding psychological problems and needs of the elderly, personal care, nutrition and food management, home management techniques, consumer education topics, and other related areas.

The Community Services Division in conjunction with Deep East Texas Council of Governments is sponsoring the training, made possible through a grant from the Governors' Committee on Aging.

The first series was completed July 28, 1978, and a second series is scheduled to begin August 18, continuing on August 25 and concluding on August 30. All three sessions meet between the hours of 8 a.m. and 4 p.m.

The sessions are free and are open to persons 60 and over who are interested in working with dependent aging Americans in the home setting. Agency staff persons who work with the elderly are also invited to attend.

For more information contact Angelina College, Community Services Division 634-7744 or DETCOG, 384-5704 in Jasper.

Academy of Dance

Registration begins August 21, 1978

Classes begin September 5th

Ballet

Tap

Jazz

Disco

Ages 3 and up

283-5224

207 W. Bluff

Acrobat

Ladies Exercise

(morning & evening)

Register Now!

Gina Riley will teach

Acrobat

837-5226

Woodville

Grand Opening Now In Progress

**HAMBURGERS
ONION RINGS**

**Come By
And Enjoy
Happy Eating**

At The Sonic

**Sunday - Thursday
10 a.m. - 11 p.m.**

**Friday - Saturday
10 a.m. - midnight**

SONIC Happy Eating

SONIC BURGERS

NO. 1 NATIONAL LETTUCE AND CHEESE .95
NO. 2 MUSTARD DILL PICKLES .95
NO. 3 KETCHUP SAUCE AND LETTUCE .95

CHEESEBURGERS .1.05
SUPER BURGER .1.60
JALAPENO BURGER .1.65
STEAK SANDWICH .1.20
GRILLED CHEESE .70
FISH SANDWICH .1.20

ONION RINGS .70
FRENCH FRIES .50
TATER TOTS .50
Fritos IN CHILI PIE .70

ALL CONEYS MADE WITH DELICIOUS FRESH CHILI ONIONS AND MUSTARD

EXTRA-LONG CONEY .95
Extra-Long Cheese Coney .1.05
REGULAR CONEY .85
REGULAR CHEESE CONEY .70
CORN-DOG-ON-A-STICK .60

WOODVILLE BEAN FOUNTAIN FAVORITES

HOT FRESH COFFEE .30
HOT CHOCOLATE .30
MILK .30
SLUSH .25 .35 .60

DR PEPPER PEPSI-COLA COCA-COLA ROOT BEER SODA .25 .35 .60

Pink Lemonade ICED TEA .25 .35 .60

FLOATS & FROSTIES .70

MALTS & SHAKES .70

Dish of Vanilla .30
Dish of Choc. .30
TWIST .30
CHOCOLATE VANILLA

SONIC

SERVICE WITH THE SPEED OF SOUND!!
104 N. MAGNOLIA NO WAITING-CALL IN ADVANCE 283-3601

TV Spotlight

Week of Aug. 20 to Aug. 26



Tex Beneke (top), Helen O'Connell and Bob Eberly take a nostalgic trip to the '40s with the sounds of the big bands on the live public television special "Tex Beneke Live From Wolf Trap," Monday, Aug. 21 on PBS.

2	WHL	Houston	Cable 2
3	WHL	Woodville	Cable 3
4	WHL	Beaumont	Cable 4
5	WHL	Woodville	Cable 5
6	WHL	Beaumont	Cable 6
7	WHL	Houston	Cable 7
8	WHL	Lufkin	Cable 8
9	WHL	Houston	Cable 9
10	WHL	Houston	Cable 10
11	WHL	Beaumont	Cable 11
12	WHL	Houston	Cable 12
13	WHL	Houston	Cable 13
14	WHL	Houston	Cable 14
15	WHL	Houston	Cable 15

'Tell 'em you saw it in..... The Tyler County BOOSTER'

- 7:00 A.M.
2 - House of Frigh-tena'n
3 - Local Messages
4 - No Program
5 - Weather
6 - Farm, Home and Garden
7 - Villa Alegre
8 - No Programs
9 - This Week in Galveston
10 - Great Grape Ape Show
11 - Consultation
12 - Woody Woodpecker
13 - Gospel Melody
7:15 A.M.
5 - News
6 - Davey/Goliath
7:30 A.M.
2 - Castaway/Polynonesia
3 - Jimmy Swaggart
4 - Day of Discovery
5 - Studio See
6 - Leroy Jenkins
7 - Morning Show
8 - Hot Fudge
9 - Directions
10 - Tom & Jerry
11 - Just Passing Thru
8:00 A.M.
2 - Sunday Morning
3 - Message of Truth
4 - Rex Humbard
5 - Mlster Rogers Neighborhood
6 - Amazing Grace
7 - Echoes Ringing
8 - Directions
9 - Inspiration for Sunday
10 - Wonderama
11 - Rev. Paul Stephens
8:30 A.M.
2 - Amazing Grace
3 - Voice of Victory
4 - Zoom
5 - Oral Roberts
6 - Church Service
7 - Sunday Devotion
8 - Assembly of God
9:00 A.M.
2 - Day of Discovery
3 - Baptist Church
5 - Weather
6 - Oral Roberts
7 - Sesame Street
8 - Rex Humbard
9 - Behind Wondrous Things
10 - News
11 - Old Time Gospel Hour
12 - First Methodist Church
13 - Don Mahoney & Jeanne
9:15 A.M.
5 - News
9:30 A.M.
2 - Faith for Today
3 - Jesus, Living and Lord
4 - Encounter
5 - Etron's Sunday School Today
6 - Wrestling
10:00 A.M.
2 - Local Messages
3 - Challenge
4 - Impact
5 - Infinity Factory
6 - Holy Amigos
7 - Hour of Power
8 - Turn on
9 - Bowery Boys
10:30 A.M.
2 - Baptist Church
3 - Insight
4 - Methodist Church
5 - Studio See
6 - Day of Discovery
7 - Face the Nation
8 - MOVIE: 'Storm Warning'
9 - Bass Fishing America
10 - Major League Baseball
11:00 A.M.
2 - Baptist Church
3 - Woodville
4 - This Is the Life
5 - Weather
6 - Rebob

SUNDAY

08/20/78

- 1:30 P.M.
4 - SportsWorld The Hall
5 - Fame International Diving Meet
6 - The Celebrity Challenge
7 - Road Race from Las Vegas
8 - Major League Baseball: Texas at Kansas City
9 - News
11:15 A.M.
5 - News
11:30 A.M.
2 - Meet the Press
3 - As We See It
4 - Once Upon a Classic
5 - Contempo
12:00 P.M.
2 - News Conference
3 - Gunsmoke
4 - Pre-Season Football: Houston at Dallas
5 - Major League Baseball: Texas at Kansas City
6 - News
7:00 P.M.
2 - CBS News
3 - Lowell Thomas Remembers
4 - Soul of the Triangle
5 - News
6 - Lawrence Welk
8:00 P.M.
2 - Wonderful World of Disney: The Three Lives of Thomasina
3 - Major League Soccer Playoffs
4 - NASL Soccer Playoffs
5 - News
6 - Oral Roberts Nashville Special
7 - News
8 - Jimmy Swaggart
9 - News
10:00 P.M.
2 - News
3 - Sign of the Times
4 - Pulse
7:30 P.M.
2 - Project U.F.O.
3 - Rhoda Branda
4 - Local Messages
5 - Soccer Made in Germany
4:00 P.M.
2 - Local Messages
3 - News

SPORTS

- SUNDAY 08/20/78
12:00 P.M. - Major League Football: Houston at Dallas
12:30 P.M. - Major League Baseball: Houston at Philadelphia
1:00 P.M. - CBS Sports Special: USAC Milwaukee 200
1:30 P.M. - SportsWorld
2:00 P.M. - Major League Baseball: Texas at Kansas City
3:00 P.M. - F.A. Cup Soccer
3:30 P.M. - Pre-Season Football: Oakland at San Francisco
4:00 P.M. - Westchester Classic
4:30 P.M. - Major League Baseball: Oakland at San Francisco
5:00 P.M. - NASL Soccer Playoffs: Teams TBA
6:00 P.M. - Major League Soccer Playoffs: Teams TBA
7:00 P.M. - ABC Monday Night Baseball
8:00 P.M. - Pre-Season Football: San Francisco at Denver
1:15 P.M. - Major League Baseball: Teams TBA
2:30 P.M. - CBS Sports Spectacular
4:00 P.M. - Wide World of Sports
6:00 P.M. - Pre-Season Football: Los Angeles at Oakland
6:30 P.M. - Pre-Season Football: Oakland at San Francisco

MOVIES

- SUNDAY 08/20/78
10:30 A.M. - Storm Warning
12:00 P.M. - Carson City
3:00 P.M. - Goodbye My Fancy
4:30 P.M. - The Borrowers
8:00 P.M. - Police Story: Day of Terror, Night of Fear
10:30 P.M. - The Sweet Ride
10:45 P.M. - Whistle Down the Wind
MONDAY 08/21/78
9:00 A.M. - Flaisy Martin
12:00 P.M. - Rajma Party
1:30 P.M. - Whistle Down the Wind
3:00 P.M. - Banyon
7:00 P.M. - Battle of Commandos
9:00 P.M. - Sergeant Melvitch vs. the U.S. Air Force
10:30 P.M. - Andy Hardy Gets Spring Fever
TUESDAY 08/22/78
9:00 A.M. - Conquest Of Cochise
11:00 A.M. - Chartreuse Caboose
1:30 P.M. - Eternal Return
3:00 P.M. - A Fever in the Blood
7:00 P.M. - Morocco
8:00 P.M. - Capone
10:30 P.M. - A Man Called Gannon
11:30 P.M. - The Invaders
12:30 A.M. - Let's Scare Jessica to Death
WEDNESDAY 08/23/78
9:00 A.M. - The Big Heat
11:00 A.M. - Born to Be Loved
1:30 P.M. - The Invaders
3:00 P.M. - Term of Trial
7:00 P.M. - Willy Wonka and the Chocolate Factory
8:00 P.M. - I Sailed To Tahiti With An All Crew
10:30 P.M. - The Parallax View
11:30 P.M. - Marriage Italian Style
12:30 A.M. - Blithe Spirit
1:30 P.M. - The Boy Friend
12:30 A.M. - Legend of the Black Hand Part 2
2:00 A.M. - Legend of the Black Hand Part 2
3:45 A.M. - Theatre Of Death
THURSDAY 08/24/78
9:00 A.M. - Blondie's Big Moment
11:00 A.M. - Seven In Darkness
3:00 P.M. - Madison Avenue
7:00 P.M. - Escape to the Sun
8:00 P.M. - Evening In Byzantium Part 1
8:30 P.M. - Vegas
11:00 P.M. - Going Home
11:30 P.M. - Legend of the Black Hand Part 3
12:30 A.M. - Legend of the Black Hand Part 3
2:00 A.M. - The Thief
3:45 A.M. - The Case Against Mrs. Ames
FRIDAY 08/25/78
9:00 A.M. - Gentleman Jim
11:00 A.M. - Motorcycle Gang
3:00 P.M. - The Champagne Murders
7:00 P.M. - The Girl Who Knew Too Much
8:00 P.M. - Evening In Byzantium Part 2
10:30 P.M. - Brink's: The Great Robbery
11:15 P.M. - Any Wednesday
12:15 P.M. - Made in Italy
1:15 P.M. - A Covenant With Death
12:30 A.M. - Heritage of a Young Stockbroker
2:00 A.M. - Louisiana Purchase
4:00 A.M. - Cave of Outlaws
6:30 A.M. - Postmark For Danger

TWO APPLIANCES IN ONE. DOUBLE CONVENIENCE!
13.6 CU. FT. REFRIGERATOR-FREEZER
3.79 cu. ft. freezer.
Two Ice 'n' Easy trays under* Twin vegetable bins.
Automatic defrosting in re - Only 30 1/2" wide, 64" high refrigerator section.

Jarrott's Pharmacy
Walgreen
Phone 283-2550
205 S. Magnolia
WOODVILLE, TEXAS 75799
Back to School Sale
starting Monday August 21
Look For The Tags For Store Wide Savings

heads west
natural motion - precision haircutting
for men and women
SPECIALIZING IN THE LATEST CUTS AND ORGANIC PERMS & ORGANIC HENNA'S
837-5327
SUMMER SALE
RECORDS, T-SHIRTS, POSTERS
Singles \$1.00 ea.
Music City
1008 W. Bluff
283-5043

Bodacious Bar B-Q
Open Tuesday-Saturday
11a.m.-2p.m. 4p.m.-7p.m.
283-5494 Chester Hwy. 325 Pine St.
Thomas Nursery & Florist
For Beauty Inside and Out
283-2421
Back-To-School Specials
at Bob's Prescription Shop
283-3073 1010 W. Bluff

THE CHESTER STATE BANK
COMPLETE BANKING - DRIVE IN WINDOW FACILITIES - NIGHT DEPOSITORY - SAFETY DEPOSIT BOXES
969-2231
LOBBY HOURS
Mon. - Fri. 9:00 AM - 5:30 PM
Sat. 9:00 AM - 3:30 PM
FDIC P.O. BOX 38

DRUGS
"Our Name is Our Motto"

Prescriptions Filled Accurately

"We'll Pay Your Parking Meter"

106 S. Charlton
283-2163

CLEAN-UP! PAINT-UP! FIX-UP!
Take Advantage of this week's Special at

BOYKIN LUMBER & SUPPLY

WOODWORK

BOYKIN LUMBER & SUPPLY
Located Bmt. Hwy. 5
283-3731

Special This Week!

Buy A 25" Color Console And I'll Give \$100

For Any B & W or Color Working Model You'll Trade!

Hurry! This Week Only!

The Furniture Center
107 E. Bluff 283-2895

WEDNESDAY

8:00 A.M. — **Super Bowl XII**
 8:30 A.M. — **Adem-12**
 9:00 A.M. — **Beverly Hills**
 9:30 A.M. — **National Geographic: The Great Whales** This program offers a vivid picture of these fascinating creatures. (60 min.)
 10:00 A.M. — **Conq Show**
 10:30 A.M. — **Family Feud**
 11:00 A.M. — **Andy Griffith**
 11:30 A.M. — **Name That Tune**
 12:00 P.M. — **Carol Burnett and Friends**
 1:00 P.M. — **Mike Douglas** Coast-Rip Taylor is joined by guests James Darren, Lassie, Bonta Granville, Radd Weatherwax, and Richard Paul. Where the show is aired for 90 minutes the show "Hummingbirds and Country Bill White will be included."
 1:30 P.M. — **MOVIE: The Invaders** What happens to six BOAT trapped and sunk by ROCAF bombers in Gulf of St. Lawrence. Eric Portman, Raymond Lovell, Laurence Olivier, Anton Watrook, Leslie Howard, Raymond Massey. 1942.
 3:00 P.M. — **MOVIE: Term of Trial** A schoolmaster is accused of assault by a young student he has tried to help. Laurence Olivier, Simone Signoret, Hugh Griffith, Sara Miles. 1963.
 6:00 P.M. — **News**
 6:30 P.M. — **Local Messages**
 7:00 P.M. — **Weather**
 7:30 P.M. — **Over Easy**
 8:00 P.M. — **Newlywed Game**
 8:15 P.M. — **News**
 9:00 P.M. — **MOVIE: The Parallax View** An investigative reporter tries to uncover a national conspiracy of political assassins. Warren Beatty, Faye Dunaway, William Daniels. 1974.
 9:30 P.M. — **The Jeffrey Ballet** Live from Antpark. The Jeffrey Ballet is accompanied by the Buffalo Philharmonic Orchestra in a varied program of dance. (2 hrs., 30 min.)
 10:00 P.M. — **Charlie's Angels** The Angels join a woman's football team to find out who is trying to destroy the

WEDNESDAY

10:15 P.M. — **News**
 10:30 P.M. — **Tonight Show** Bill Cosby plays host to Pete Fountain. (60 min.)
 11:00 P.M. — **Hawaii Five-O** The daughter of a Latin American dictator is kidnapped. (R) (60 min.)
 11:30 P.M. — **MOVIE: 'Blithe Spirit'** A man's second marriage is upset by the return of his first wife's ghost. Rex Harrison, Constance Cummings, Margaret Rutherford. 1945.
 12:00 A.M. — **Police Story** A vice squad cop tries to do his work and further his daughter's ambition to be a figure skater. Starring Robert Forster, Joy Lynn Leduc and Elaine Donahue. (R) (60 min.)
 12:30 A.M. — **Sign Off**
 1:00 P.M. — **MOVIE: 'Legend of the Black Hand'** Part 2
 1:30 P.M. — **News**
 2:00 A.M. — **MOVIE: 'Love Thy Neighbor'** An entertaining musical-comedy, of the light between two radio comedians. Jack Benny, Fred Allen, Mary Wickes. 1940.

WEDNESDAY

TRUTH PROBE

Warren Beatty (left), and Hume Cronyn appear in "The Parallax View," a contemporary thriller about a newspaper reporter determined to uncover the truth about a politician's assassination. To be broadcast on "The CBS Wednesday Night Movies," Aug. 23. Reporter Joe Brady (Beatty) is one of 10 witnesses to the assassination of a senator. Although a congressional investigating committee returns a finding of no conspiracy, some of the witnesses have their doubts. Stations reserve the right to make last-minute changes.

Farm Bureau Insurance
Life • Auto • Home • Blue Cross/Blue Shield
Larry Treat-Manager 283-2424 W. Bluff Woodville

Woodville Florist & Gift Shop
Sandra & Lewis Hudson Owners
283-2571 215 Kelly Blvd.

Woodland Galleries
ROUTE 1-BOX 3-A — AREA CODE 713 283-5024 WOODVILLE, TEXAS 75979
WOODLAND GALLERIES congratulates Robert J. Saxon of Diloli, Texas, winner of a print by the well-known Texas artist Dalhart Wildberg in our First Saturday of the Month drawing. When you come by for a visit, be sure to register for our August drawing!

THURSDAY

5:00 A.M. — **MOVIE: 'Blonde's Big Moment'** Dagwood smears jelly on an irate stranger who, as luck would have it, turns out to be his new boss. Penny Singleton, Arthur Lake, Anita Louise. 1947.
 11:00 A.M. — **MOVIE: 'Seven in Darkness'** A group of blind survivors of a chartered plane crash in a remote mountainous region struggle against the elements and their own fears as they grope their way back to civilization. Milton Berle, Diana Merrill, Sean Garrison, Arthur O'Connell, Altagrande Ray, Lesley Ann Warren. 1969.
 1:00 P.M. — **Mike Douglas** Coast-Rip Taylor is joined by guests Nick Nolte, Anthony Newley, and Alan Bursky. Where the show is aired for 90 minutes the Stalband Vocal Band and Ross Allen will be included.
 3:00 P.M. — **MOVIE: 'Madison Avenue'** An unscrupulous advertising woman and a high-principled newspaper woman contribute to an eleventh hour about-face when a public relations expert realizes the man he "built up" could endanger the safety of the nation. Dana Andrews, Eleanor Parker, Fred Astaire. 1950.
 6:00 P.M. — **News**
 6:30 P.M. — **Local Messages**
 7:00 P.M. — **Weather**
 7:30 P.M. — **Over Easy**
 8:00 P.M. — **Newlywed Game**
 8:15 P.M. — **News**
 9:00 P.M. — **MOVIE: 'Evening in Byzantium'** Part 1 The decadence, dazzle and power play of the Cannes Film Festival are captured in this movie based on Irwin Shaw's best seller. Glenn Ford, Shirley Jones, Eddie Albert.
 9:30 P.M. — **Operation: Runaway** A teenage girl and her little brother run away to San Diego. (R) (60 min.)
 10:00 P.M. — **Local Messages**
 10:30 P.M. — **Barnaby Jones** Barnaby and J.R. become involved in a kidnap case. (R) (60 min.)
 11:00 P.M. — **Merv Griffin**
 11:30 P.M. — **News**
 12:00 A.M. — **Weather**
 12:30 A.M. — **Joker's Wild**

CB's By Pee Wee
2681 Magnolia
283-8880

SALE!
Model 252A \$189.95
Poulan w/ CASE
W/ Services What We Sell

JACK'S SAW and Sharp Shop
283-3133
6070 Valley Drive

"Poor Boys"
283-3801

All Season Mobile Home Comfort
Call now for free estimate on your Mobile Home Air Conditioning Needs and take advantage of our Pre-Season Special on All Mobile Home Units

"We Service All Makes"

WATSCO
AIR CONDITIONING & HEATING
100 E. BLUFF
283-3696

JUST OPENED!
HENSARLING & SPECIALTY CO. CUSTOM WINDOW AND DOOR SCREENS BATH TUB ENCLOSURES

HENSARLING & SPECIALTY CO.
283-5666
LOCATED 700 N. MAGNOLIA WOODVILLE, TX.

THURSDAY

7:30 P.M. — **Live From Wolf Trap** Chuck Mangione Innovative composer-musician Chuck Mangione and his quartet combine jazz, ballad and pop in the style of his recent album, "Frets So Good."
 8:00 P.M. — **What's Happening** Dee's first date gets complicated. (R)
 8:30 P.M. — **Americans**
 9:00 P.M. — **Ricbie Brockelman, Private Eye** Ricbie gets himself and his brother Sydney implicated in a slaying. (R) (60 min.)
 9:30 P.M. — **Weather**
 10:00 P.M. — **Hawaii Five-O** McCarratt investigates a facility where terminally ill guests bequeath their estates in return for being frozen. Guest starring Peter Lawford. (R) (60 min.)
 10:30 P.M. — **Barney Miller** The precinct is locked in their own jail by a wild-eyed gunman. (R)
 11:00 P.M. — **MOVIE: 'Going Home'** A six-year-old child's testimony is instrumental in securing the conviction of his father for the beating death of his mother. Years later, the boy seeks out his father. Robert Michum, Brenda Vaccaro, John-Michael Vincent. 1973.
 11:30 P.M. — **Starzky & Hutch** The duo pose as dance instructors to uncover a blackmail plot. Guest starring Audrey Christie. (R) (60 min.)
 12:00 A.M. — **Bonanza**
 12:30 A.M. — **Llars Club**
 1:00 A.M. — **700 Club**

THURSDAY

GAME PLAN

Melinda Daniels (Robin Mattson), resentful of her mother's remarriage, is torped by her brother, Barry, who has also run away for the same reason, in "Melinda and the Pinball Wizard" on NBC-TV's "Operation Runaway," Thursday, Aug. 24. The two children run away to San Diego, where Melinda hopes to find work through a waitress acquaintance. The youngsters are given a ride by Johnny Compton, a veteran with a knack for repairing pinball machines who hopes to start an arcade in the port city. Stations reserve the right to make last-minute changes.

10:30 P.M. — **Tonight Show** Robert Klein plays host to the Hudson Brothers. (90 min.)
 11:00 P.M. — **M*A*S*H** Maj. Burns recommends a soldier for dishonorable discharge. (R)
 11:30 P.M. — **Masterpiece Theatre: Poldark II** Dorothea has to face crisis after crisis along with Ross in London. (60 min.)
 12:00 A.M. — **Starzky & Hutch** The duo pose as dance instructors to uncover a blackmail plot. Guest starring Audrey Christie. (R) (60 min.)
 12:30 A.M. — **MOVIE: 'The Thief'** A Communist spy steals atomic secrets, then suffers the torments of conscience. Ray Milland, Rita Gam, Martin Gabel. 1952.
 1:00 A.M. — **Local Messages**
 1:30 A.M. — **Weather**
 2:00 A.M. — **Sign Off**
 2:30 A.M. — **News**
 3:00 A.M. — **Praise the Lord Club**
 3:30 A.M. — **News**
 4:00 A.M. — **12:15 A.M.**
 4:30 A.M. — **News**
 5:00 A.M. — **12:30 A.M.**
 5:30 A.M. — **Sign Off**
 6:00 A.M. — **News**
 6:30 A.M. — **MOVIE: 'Legend of the Black Hand'** Part 3
 7:00 A.M. — **Night Gallery**
 7:30 A.M. — **2:00 A.M.**
 8:00 A.M. — **MOVIE: 'The Thief'** A Communist spy steals atomic secrets, then suffers the torments of conscience. Ray Milland, Rita Gam, Martin Gabel. 1952.
 8:30 A.M. — **Tomorrow Show**

OAK Elegance with a flair

Big Triple Dresser, Twin Mirrors, Chest and Bed

Here's furniture with a durable, casual appearance that you can live with and proudly enjoy for many years! The high-pressure Westinghouse Micarta tops resist stains and scratches, while you easily glide the huge drawers on 3-point center guides. These are just a few of the features that make this the "boy" of your lifetime!

\$349.95

EASY TERMS

McClure Furniture
305 N. Magnolia 283-2519

FRIDAY

08/25/78

- 9:00 A.M. - MOVIE: 'Gentleman Jim' Story of James J. Corbett...

- 11:00 A.M. - MOVIE: 'Motorcycle Gang' A motorcycle racer aids police officer...

GONE TO EARTH



Craig Stevens, left, questions the father of a kidnapped teen-ager...

WOODVILLE TV Curtis Mathes Dealer FACTORY WARRANTY SERVICE ON ZENITH & RCA...

Cub Cadet: the people's choice. Now's the time to buy an International Cub Cadet...

DISCOUNT LUMBER THE LUMBER BARN Happy Valley Enterprises...

CITIZENS STATE BANK FEDERAL DEPOSIT INSURANCE CORPORATION...

FRIDAY

- 7:00 A.M. - Hong Kong Phooey

- 11:00 A.M. - Land of the Lost

- 8:00 A.M. - Burt's Bunny Road Runner Show

- 12:00 P.M. - What's New, Mr. Magoo?

- 9:00 A.M. - Weather

- 1:00 P.M. - Pre-Game Show

SATURDAY

08/26/78

- 7:00 A.M. - Undersea World of Jacques Cousteau

- 10:00 P.M. - News

- 8:00 P.M. - Undersea World of Jacques Cousteau

- 11:00 P.M. - News

- 9:00 P.M. - NBC News

- 12:00 A.M. - News

MOVIE: 'Assignment To Kill' A private eye is hired to investigate possible big time corporate fraud in Switzerland...

DOGWOOD CLUB & RECREATIONAL RESORT... WIMMING POOL... GOLF COURSE...

TV Dialogue

POET'S CORNER — Could you please print the poem that Natalie Wood read in the movie "Splendor in the Grass," in which she starred with Warren Beatty. I really liked the poem, but I don't think the movie is scheduled to air again soon. — B.A.D., Buffalo, N.Y.

You needn't get your poetry from the tube. Go to the original source — William Wordsworth. I can't reprint the whole thing here — because it's quite long, but the lines in question are: "Though nothing can bring back the hour / Of splendour in the grass, of glory in the flower." You can find the full poem in any Wordsworth collection; it's entitled "Ode to Immortality from Recollections of Early Childhood," generally known as "Ode on Immortality."

FAMILY LOSS — I love watching the reruns of "Family Affair." I've heard that two of its members are not with us anymore. Is this true? — Sara Wilken, Santa Monica, Calif.

I'm afraid that's true. Both Anissa Jones and Sebastian Cabot have died. **SPACE STARS** — "Space 1999" is my favorite show. There is something I just have to know: Were Martin Landau and Barbara Bain ever married? If so, do they have any children? Also, how long did the series last? — M.D., Long Beach, Miss.

Landau and Bain have not only been co-stars for some time ("Mission Impossible, as well), but husband and wife, too. They are still married and have two teen-age children. "Space 1999" never hit as big as the producers would have liked — it stayed in orbit two full seasons.

HULK HUNK — I think Lou Ferrigno is not only a great Hulk, but a real hunk. Can you tell me if it's true that he is really deaf, and has the show been renewed for September? — Dana Morrison, Indianapolis, Ind.

Ferrigno is hard of hearing, but he is not deaf. And the show has been renewed so you can watch his muscles ripple for another season.

TOUCHDOWN — I have been writing to the Oakland Raiders Stadium and also to Ken Stabler a few times, but never got an answer. Could you please give me a "fan club" address for Ken Stabler? — Michael V. Woffler, North Canton, Ohio

I couldn't locate a fan club, but if it's Stabler you want to contact, the best place might be his office. Write him at this address: 7811 Oakport St., Oakport, CA. 94621. Hope you make contact.

Irving Berlin Revue



Eydie Gorme (left) and Carol Burnett sing a duet of an Irving Berlin favorite during "Steve & Eydie Celebrate Irving Berlin," the special to be presented on NBC, Tuesday, Aug. 22.


Irving Berlin composed more than 3,000 songs, of which 1,000 were published. He was responsible for 30 Broadway shows and 17 Hollywood musicals. Yet he never learned to play the piano properly. Berlin turned 90 years old this year (May 11, 1978).

Many of his songs have become classics — among them, "Alexander's Ragtime Band" and "White Christmas," which will be

heard again when "Steve & Eydie Celebrate Irving Berlin" is telecast on NBC Tuesday, August 22. The Special stars Steve Lawrence and Eydie Gorme, with Leslie Browne, Carol Burnett, Sammy Davis Jr. and Oscar Peterson.

Fred Astaire: "He was the first honest-to-goodness melody writer I can remember. He started the whole thing."

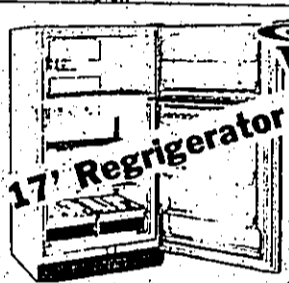
Harold Robbins, author of that endless stream of best-selling novels, said recently that his wife Grace doesn't mind when he travels around solo because her philanthropies keep her on the move also. And do they ever. Last month she staged a gala in Cannes, France, to benefit the 150 orphans whose housing — and lives — she has improved. Now she's off to California to do good work there raising scholarship funds for U.S. kids who need special help. That takes the form of a benefit performance (again, match, gala) at the L.A. premiere of "Annie." Cyd Charisse, and Tony Martin are co-chairing this one. Incidentally, they flew over to Cannes to guest at Grace's July bash. Nice to have chums who are talented and famous ... as well as good-hearted.

Come to
Grimes Service Center
or
Jackson's T.B.A. Store
for all your
tires, batteries
and custom
wheels.

112 S. Magnolia
Woodville

MANN FURNITURE

206 W. Bluff

283-3740



Whirlpool

Model EDT171SK
No-Frost Factory Special Refrigerator-Freezer
• 17.0 cu. ft. total refrigerated volume-4.75 cu. ft. freezer
• No-Frost refrigerator and freezer — no manual defrosting chores, ever
• Durable — Porcelain-enameled. Interior resists rust, stains, scratches

Reg. \$529⁹⁵

\$378⁸⁸

w/working trade

Direct Furniture Showcase

302 N. Magnolia

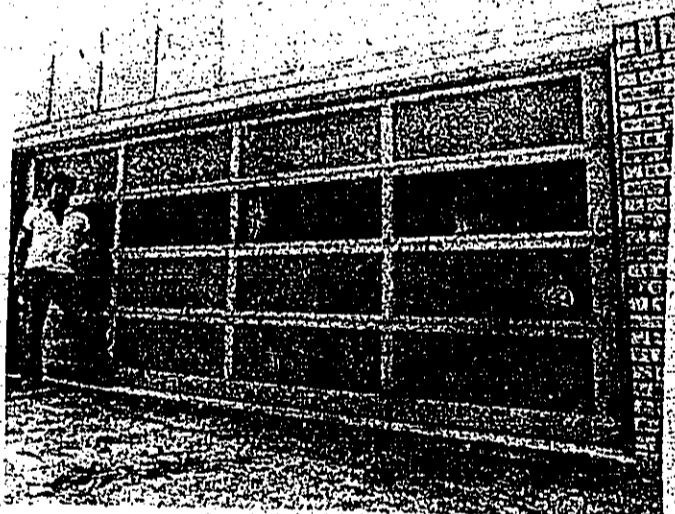
283-5211

HOMEOWNERS! WE REPLACE OLD GARAGE DOORS

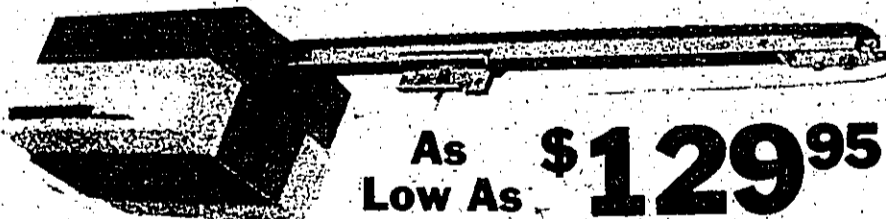
BUILDERS!

CONTRACTORS!

"Let Me Install Your Garage Doors!!" Mike Thomason
-Owner-



SAVE YOUR BACK WITH AN ELECTRIC DOOR OPERATOR



As **\$129⁹⁵**
Low As



**SALES
SERVICE
REPAIRS**

EAST TEXAS DOOR

WOODVILLE

283-2554

**Serving 100
Mile Radius
of Woodville**