

Happy New Year

Hoag & Sons Book Bindery, Inc.
Springport, Michigan 49284

The Tyler County BOOSTER

Serving Tyler County Since 1930
Vol. 51 3 Parts Thursday, Dec. 28, 1978
No. 52 26 Pages Woodville, Texas 75979 15



CONTEST WINNERS: Pictured above are the winners of the Christmas Coloring Contest sponsored by the Citizens State Bank. There were six winners in three age groups. Pictured with Toby Spurlock, Senior Vice-President of the Bank are from left to right: Jackie Riley, Cindy Hanks, Melissa Stewart, Carol Anne Greer and Sonia Rawls. Thelma Joseph was not present for the picture. All the girls were glad to get their winnings before Christmas to help out with Christmas shopping.

'Don't Spoil Your Holiday'

Be Careful With Fireworks

AUSTIN—Don't let the careless use of fireworks spoil an otherwise joyous holiday period, warns State Fire Marshal Ernest Emerson.

"We are entering our second selling season," said Emerson, referring to the times when fireworks can legally be sold in Texas, "and we are again

expecting record numbers of fireworks-related incidents. "There are no such things as 'safe' fireworks," Emerson emphasizes. "Only when everyone knows this fact and takes it seriously will there be an end to injuries and fires from these products."

The State Fire Marshal's Office, a division of the State Board of Insurance, is responsible for the licensing of the more than 4,000 locations of fireworks activities carried on in Texas. "The lack of manpower and the

short selling season really works a hardship on us from an enforcement standpoint," claims Emerson, "but that certainly doesn't mean we won't be out doing our best to see that all of the licensing requirements are being met.

Inspectors from this office travel the state in answer to complaints and just generally checking the retail licenses of those selling fireworks." The sale of fireworks in Texas is legal at the retail level from December 15th through January 1st, and from June 24th through the 4th of July.

Tax Representative In Woodville Jan. 2

AUSTIN—State Comptroller Bob Bullock announced he is sending a representative from his Beaumont Office to Woodville on Tuesday, January 2, 1979 to assist local taxpayers and answer questions about state taxes.

Bullock said Enforcement Officer Charles Mosley will meet with local taxpayers at the Tyler County Courthouse, 100 Courthouse from 1:00 p.m. to 3:00 p.m. "If Tyler County area merchants or anyone else for that matter, have any questions about state taxes or need help in preparing tax forms, Mr. Mosley will be there to assist them."

"We're trying to cut the red tape in this office and we believe these face-to-face sessions with taxpayers help do just that," Bullock added.

Miss Tyler County Pageant Draws Near

Organizers of the Miss Tyler County Pageant which is set in 1979, for Saturday night, Feb. 3, have selected committees for the pageant's work.

and Lynn Hayes, entries for the Pageant must be submitted by Saturday, Dec. 30. All other entrants must give indication by January 15, 1979.

The producers ask that entrants adhere to the Dec. 30 and Jan. 15 dates as pageant books must be sent to the printers no later than January 20. Organizers say that early application will prevent name omission from the Pageant handbook.

Committees set up for the coming pageant are: Entries Chairman, Dorothy Britnell, Ruby Whitacre; 14-year-old through Junior Class, Eunice Bohannon and Carla Stewart; 9-year-old through 13-year-olds, Claytie Lee Clow, Margaret Kottong, Kay Henderson; 5-year olds through 8-year-olds, Izzene Sheffield and Tina Bandy.

Hwy. 190 Wreck Fatal

A fatal accident five miles east of Woodville on Hwy. 190 at 5:33 p.m. Saturday, Dec. 23, claimed the life of a 36-year-old Woodville woman, the only victim in a three-car accident involving a total of seven persons.

Pronounced dead at the scene by Precinct 3 Peace Officer Frank Grimes, was Marcia Risinger, who was traveling west on Hwy. 190 with her mother, Mrs. Wemyss Horton.

Charges are pending against a Woodville juvenile for allegedly crossing the center stripe while headed east toward Jasper. Officers reports indicate that the juvenile crossed the line and struck the Risinger vehicle first, then catenped off the left shoulder after contacting a westward bound truck and camper driven by a Cleveland couple, Mr. and Mrs. John Beasley with their two children asleep in the back of the truck.

Mrs. Horton was treated and released from the Tyler County hospital. "There were no other injuries.

Funeral services were held at the First United Methodist Church of Woodville (details on page 4A) under the direction of Edwards Funeral Home.

This fatal accident will reflect as an underestimation the number of 44 deaths on Texas highways which was the holiday prediction by Texas Department of Public Safety Commander Col. William R. Spier. That figure has already jumped to 60 as of Booster presstime on Tuesday.

Brookshire Bros. Store Hit With Bomb Threats

Two anonymous telephone bomb threats, one each on Friday and one on Saturday, were directed at Brookshire Bros. Store in Woodville, keeping employees and customers and city police off balance during peak holiday shopping just prior to Christmas.

According to Store Manager Jeff Ratcliff, a call was received at three different locations about 1:30 p.m. on Friday, calls made everywhere except the store. "The caller allegedly called the Tyler County Clerk's office to report the threat and then apparently called the Tyler County Sheriff's office. In a muffled voice to announce that the incident was about to take place."

KVLT Radio Station, according to law officers, received information regarding the threat. Station employee Mille Gardner was at the station controls when she received a call from what she determined was a mature man's voice, who said, "I have a big news story for the radio station. There will be a bomb go off between 2 and 4 p.m. at Brookshire Bros. and you had better inform the sheriff's department."

Jockey, she said the man hung up the phone so fast that it took a couple of seconds to determine if he was serious or not.

"I didn't want to take any chances so I called the Sheriff's department immediately," she said.

Sheriff's officers turned the incident over to the Woodville Police who immediately had five men in the store.

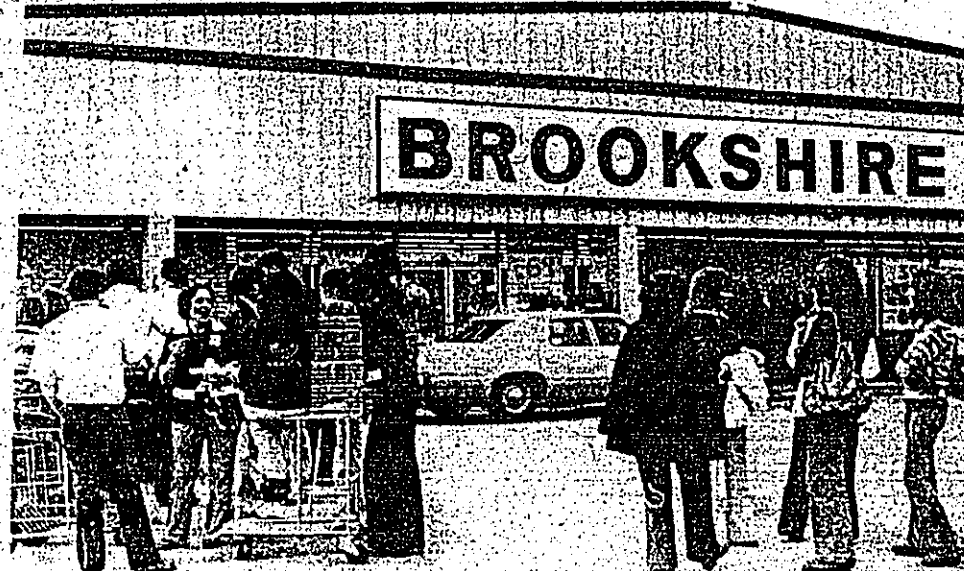
Store manager Jeff Ratcliff said he had a "full store" during the first hoax on Friday and a store that was "nearly full" on Saturday at 5 p.m.

Ratcliff said he announced over the store loudspeaker that all persons were to evacuate the store immediately.

According to Woodville Patrolman J.C. Coon, the first procedure is to see that everyone is out of the store, then begin a search aisle-by-aisle. According to Coon, there were already several officers in the store at the time the threats were made. Assistant Store Manager Ronnie Jackson received the call at the store on Saturday at 5 p.m. According to Ratcliff, "I hope we don't have any more of those."



Officer J.C. Coon enters Store.



Brookshire Bros. Store employees shown following evacuation on Friday after a telephone caller reported a bomb threat to the store between the hours of 2-4 p.m. Police say they have no clues as of yet in the case.

Hospital's Life Flights Add Another Copter

HOUSTON—It looks as if Hermann Hospital may be starting a holiday tradition. William F. Smith, executive director of the hospital, announced the addition of Life Flight III to the hospital's patient air transport program.

Last year at this time, the hospital announced the addition of its second helicopter to the Life Flight program. Billed as "Hermann's Christmas Gift to Houston," Life Flight II made its inaugural flight on Christmas Day.

"This year, Life Flight III will be arriving on the morning of December 23," Smith said. "However, we will not be operational until after January 1."

With the arrival of the holiday season and the dawning of the new year, it seems very appropriate that we announce the addition of another helicopter to the Life Flight program. Hermann's Life Flight patient air transport program was begun in August of 1976. Presently consisting of two helicopters, Life Flight averages more than 160 flights each month.

The flight crew can administer emergency medical care to the critically ill or injured and then the patient can be flown to the Hermann Hospital or to the hospital of the patient's choice.

"As a health care institution which serves the public, Hermann Hospital must look to Houston's future," Smith explained. "Some statistics indicate that over 350 cars are being added to our city's freeways every day, and more than 1,500 people are moving into the Houston area every month."

"We must be prepared to keep one step ahead of our growing population. The need for the Life Flight service will increase rapidly over the next months. Hermann Hospital must be prepared to meet this vital need," he said. "Life Flight III will allow us to move in this direction with more confidence."

Life Flight has dramatically extended the delivery of emergency care to the Houston community and its surrounding areas. "The whole concept of the Life Flight program is to provide a much needed service to the citizens of this area," Smith said. "Hermann is one of

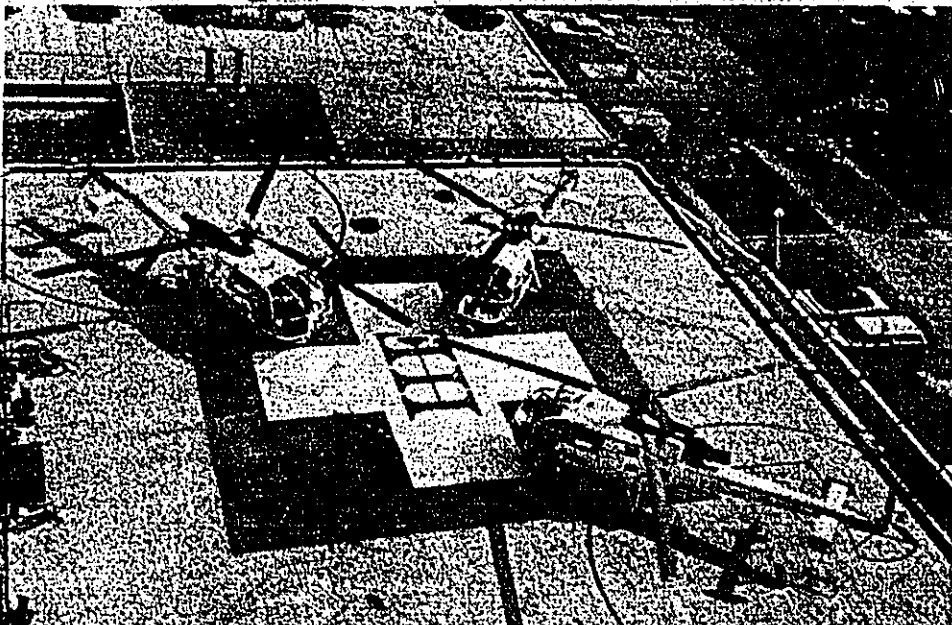
only two hospitals within the Houston metropolis with a Category I emergency center. This means we have a team of physicians, including surgeons and specialists, and the support staffs standing by to provide comprehensive 24-hour emergency medical care."

Smith said the growth and acceptance of the Life Flight program would not have been possible without the cooperation of the Houston Fire Department's Medical Rescue Division and outlying ambulance services. "It has been through the efforts of these outstanding groups that we are able to bring this type of trauma care to accident and disaster victims," said Smith. "We must rely on these swift medical assistance which is required by the patient."

Houston's Fire Department and other outlying ambulance services provide the ground contact for the flight crew which is vital to the landing of the helicopter. Paramedics also assess each patient at the scene and it is usually these trained individuals who make the decision to dispatch the Life Flight helicopter and medical crew. Only a law enforcement agency, the fire department

the emergency ambulance services, a hospital, a physician or an industrial safety representative may request the services of Life Flight. This insures the proper use of the emergency facility by having trained reliable personnel request the helicopter for an accident victim or at the

scene of a disaster. The Life Flight helicopters are French made aircrafts called Alouettes. Leased by the hospital from Aviation Medical Services, a subsidiary of Western Helicopters, the helicopters cruise at 120 miles per hour and can reach most Harris County locations in less than 15 minutes.



Hermann Hospital Life Flights now have three copters.

Flight is more than just a shuttle service. Life Flight is a program designed for the trauma patient and the total community. "Many people from Houston and the surrounding areas are served by Life Flight. Many people have inquired about participation in our helicopter program. We do invite gifts from the public to purchase life-saving equipment and supplies or to provide funds to help offset expenditures for this community emergency air service."

Serving a 130-mile radius, the charges for the Life Flight helicopter have not changed since its beginning in August, 1976. Lift-off charge is \$70; there is a \$2 per mile (round trip) charge; there is a \$100 per hour charge for any flight which is over two hours in length and there is a charge for any medications administered during flight.

"It is our belief that Life Flight III will allow us to augment our existing emergency care facilities, and help us attain the hospital industry's ultimate goal of saving human lives," Smith said. Hermann Hospital, a nonprofit institution founded in 1925, is the primary teaching hospital for The University of Texas Medical School at Houston, located in the Texas Medical Center.

MHMR Audit Good

Representatives from a local accounting firm told the Board of Trustees, Deep East Texas MHMR Services, they had made significant progress in improving their accounting system and related control procedures.

The announcement came at the recent meeting of the local MHMR Board when Axley and Rode, Certified Public Accountants of Lufkin, made a report of their audit of MHMR accounts for fiscal year 1978 which ended August 31, 1978. The meeting of the Board took place Tuesday, December 12, in the conference room of the Day Treatment/Administration Facility in Lufkin. The audit was generally favorable, containing five recommendations.

The China Card Folly

If certain short-sighted Americans have their way, Communist China will be transformed into a military and economic superpower at the expense of U.S. taxpayers.

The Carter administration apparently has decided the time has come to play the "China card." It imagines that it can restrain the Soviet Union by strengthening Red China's armed forces and industrial base. The influential National Council on U.S. China Trade is pushing for the "China card" as a means to restrain the Soviet Union by strengthening Red China's armed forces and industrial base. The influential National Council on U.S. China Trade is pushing for the "China card" as a means to restrain the Soviet Union by strengthening Red China's armed forces and industrial base.

With American help, Red China could become an economic colossus. Krukat points out that "she has the cheap manpower in abundance all under total control. Consequently, all China requires is industrialization to create a challenge to the developed world in the production of manufactured and processed goods."

Krukat underscores the point that if we provide Peking with the "stew" of modern industry, and most particularly if we do it all on credit without great and certain return for ourselves, we will create an economic gargantuan whose shadow will fall everywhere, with no palpable benefit to ourselves in return.

The initial Chinese Communist trade effort is likely to come in the area of textile exports, with Peking attempting to push its goods into American markets. Hundreds of thousands of Chinese, working without any limitation on hours or conditions of employment, could produce textiles for a fraction of the production costs in the United States. The same pattern would apply to many other industries in the U.S. if we were to provide Peking with the "stew" of modern industry, and most particularly if we do it all on credit without great and certain return for ourselves, we will create an economic gargantuan whose shadow will fall everywhere, with no palpable benefit to ourselves in return.



Bullock Forecast Is Good

AUSTIN—Comptroller Bullock forecast Monday in a revenue report to the Legislature that Texas economic prosperity will continue for the next two years but cautioned that national recession in mid-1979, though state government will have available for its budgeted revenue from existing taxes.

and other sources will top \$21.2 billion in the 1980-81 budget period, or \$2.8 billion more than the state is spending in its current budget. The estimate includes a \$743.1 million balance expected to be left in the treasury August 31, but that figure includes \$300 million which has already been appropriated to the agencies by the Legislature and may be further reduced by special emergency appropriations by the incoming Legislature.

Patman Proposes Bill

SENATOR Patman has introduced a bill to provide for a constitutional amendment to the Texas Constitution to provide for a limited term of office for the Governor and the Lieutenant Governor. The bill also provides for a limited term of office for the Governor and the Lieutenant Governor.

National Health Agency Files Suit

The National Health Agency has filed a suit in federal court in Washington, D.C., against the chairman of the Civil Service Commission. The suit was filed after one year of frustration and extensive discussion with both the Civil Service Commission and the United States Department of Health, Education and Welfare.

Colmesneil News

Christmas parties and programs, which have provided ample enjoyment for everyone during the past two or three weeks, have now passed into happy memories and made a way for family dinners and visitation.

Coming to the home of Mrs. James Best on Saturday were her son and daughter, Tim De Carter, and Daveda of Birmingham. Joining these on Tuesday for a week's visit were an older daughter, Theresa Dike and her little daughter, Christy, of Wadsworth.

With Mrs. Ella Boyett for the holidays are her niece, Ruth Ellen Swensen and daughter, Amber of Houston.

Mr. and Mrs. Louis Ogden spent Friday at Memorial with their daughter, Frances Howard and family. Jimmy D. and Ruby Hughes returned Friday from Houston where she was confined for three weeks to Memorial City General Hospital receiving treatments. Caring for them in their home is Mrs. Danny Bowman.

Hillister News

Mrs. Hazel Ghent, of Beaumont, was here for the holidays with her sister, Mrs. Beth Howard and other relatives.

Mrs. and Mrs. Elmo Gibbs spent Christmas day in Houston with their families. Mrs. and Mrs. Sidney Holt were in Houston with their families for the holidays.



Lamar's Celebrate 40 Years
The children of Jessie and George Lamar, invite friends and relatives to a reception to celebrate their 40th anniversary, Sunday, December 31st. Calling hours are from 2 to 4 p.m. at the First Baptist Church, Warren, Texas. They were married December 24, 1939 in the Antioch Community near Woodville. They request no gifts.

Woodville Bass Club To Sponsor Seminar On Depth Finder

The bass club will hold its first meeting of 1979, January 2nd at the Woodville Lions Den. All who are interested in bass fishing are invited to attend and bring a guest.

Warren Band Boosters To Meet

There will be a meeting of the Warren Band Boosters, Saturday, January 6, 7 p.m. in the High School of Colmesneil. All interested persons are urged to attend.

Office Supply Center

AB Dick Supplies
"All your office supply needs"
Telephone Answering Service
501 W. Bluff 283-5164

HOT BARGAINS FOR WINTER

Wood Burning Circulators
Automatic Blower
Silo Load Or Front Load With Glass Doors
Standard Tub Kits \$2995
FREEMAN Concrete and Hardware 837-5278 day 837-5284 night

Ramblin' Round Rockland

BY ALOHA FREELAND
Greetings and Happy New Year from the Rockland Community. We hope your Christmas was merry and that you have a happy and prosperous new year.

Our Christmas festivities were saddened when our friend, Mrs. Lillian Quinn, who was taken to Tyler County Hospital in Woodville on Saturday, and get well wishes and prayers continue for Bubba Gully of Colmesneil who had surgery on his arm in St. Elizabeth's Hospital in Beaumont on December 18.

We welcome a new family to our community. Mr. and Mrs. Larry Huffman and children, who moved here recently from Silbee.

The three churches of our area all have reported good Christmas programs and attendance. Rocky Springs Baptist Church had their program on December 22nd. The Rockland Revival Center had theirs on Jan. 1st. Wesley Lyons and Deatrice Reppard on the 3rd.



Mrs. John Robert McCaw
Carmen L. Cordero and John Robert McCaw, of Dallas, were joined in holy matrimony Saturday, November 25, 1978 at 11:00 a.m. in the Holy Trinity Catholic Church in Dallas. The bride is the daughter of Mr. and Mrs. Jose J. Cordero, Sr. of 804 Pear St., Woodville. Parents of the groom are Mr. and Mrs. Thomas McCaw of Lafayette, Indiana.

New Year's Eve Dance Saturday

A New Year's Eve Dance will be held at the Woodville Inn Saturday, Dec. 30 from 9 p.m. till 1 a.m. with doors opening at 8:30 p.m. Proceeds from the dance will go towards the Dogwood Festival Scholarship Fund. Charge per couple \$15.

Entertaining for the evening will be the "Nippon" Band of Kirbyville.

The Yellow Ribbon Antiques
New Gifts
Open Saturdays 10-5
Or By Appointment
283-2514 or 283-3262
117 N. Nellius St. Woodville, Texas

Thomas Nursery & Florist
Hwy. 69 South
283-2121

INVENTORY SALE NOW THROUGH JAN. 1
Christmas Items 30% off
Containers, baskets, ceramic, novelty, brass, copper-20% off
silk & dried flowers 20% off
Silk & Dried, & artificial arrangements already made up 20% off

Golden Anniversary

Mr. and Mrs. E.O. Wilson will celebrate their Golden Wedding Anniversary Sunday, Dec. 31 from 2 till 5 p.m. at their home in Rock County. The Wilsons were married at Auburn, Lincoln County, Mississippi on Dec. 22, 1928.

Jackson To Speak At True Vine

Eugenia Jackson will be speaking at the True Vine Baptist Church in Doucette, True Vine will hold a special Mission Day service on Sunday, Dec. 31. The service will begin promptly at 11:00 a.m. and will feature Sister

BIRDWELL'S
FIT FOR FARM
RED WING
The first steam engine was patented in 1698 by Thomas Savery. It was improved by James Watt in 1769.

World's Finest Water Pump
Pargas
311 S. Magnolia
Woodville
283-2578

Ramsey's Mini Warehouse
SELF STORAGE
1 mile Jasper Hwy. 190 East
Woodville, Texas
283-3481
Now Leasing

Vet Loans Get Increase

An increase from \$17,500 to \$25,000 as the maximum guaranty for Veterans Administration home loans is one of several important features of the "Veterans Housing Benefits Act of 1978" according to Ted W. Myatt, Director at the VA Regional Office in Houston.

Agriculture Briefs

NEW CATTLE DIPPING SYSTEM—Cattle footrot man-agers can save money and reduce the amount of disposable insecticide.

CHECK FOR TENT CATERPILLARS—Commercial homeowners should check peach, plum and other fruit trees for tent caterpillars.

The Tyler County BOOSTER
PUBLISHED EVERY THURSDAY BY TYLER COUNTY PUBLISHING COMPANY, P.O. Box 248, Woodville, Texas 75797. Phone: 283-2569.
Entered as second class matter at the Post Office at Woodville, Texas, December 11, 1930 under the act of Congress, March 2, 1879. Second class postage paid at Woodville, Texas.
Any erroneous reflection upon the character, standing or reputation of any person, firm or corporation which may appear in this newspaper will be promptly corrected upon being brought to the attention of the publisher.
Postmaster: Please send form 3579 to P.O. Box 248, Woodville, Texas 75797.

TEXAS PRESS ASSOCIATION
MEMBER 1978

Grammer's Grocery
1403 W. Bluff Woodville
283-2520

Del Monte CATSUP 14 Oz.	46¢
Clabber Girl BAKING POWDER 1# 8 Oz.	79¢
POTATOES 3# Bag	89¢
CORN KITS	4/\$1.00
Bar-B-Que Hormel VIENNA SAUSAGE	3/\$1.00
Salt JOWLS	79¢
SIRLOIN STEAK	\$2.29
Round STEAK	\$1.69
Rib STEW MEAT	99¢
Full Horn CHEESE	\$1.79
FREEZER ORDERS	
FORE QUARTER CUT & WRAPPED	\$1.19 lb.
HIND QUARTER CUT & WRAPPED	\$1.19 lb.

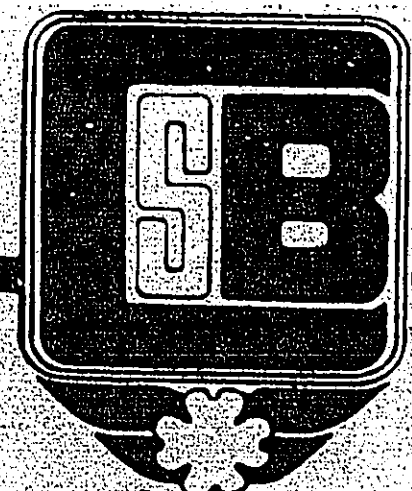
World's Finest Water Pump
Pargas
311 S. Magnolia
Woodville
283-2578

HAPPY NEW YEAR GREETINGS TO ALL

CITIZENS STATE BANK



- OFFICERS:** Robert A. Mann, Carol J. Galt, J. B. Tabor, Spalding, W. J. Galt, H. H. Wynn, Jr., Bobby Ray Kinnaird
- Directors:** Robert A. Mann, W. S. Nichols, Jr., Raymond A. Parker, Allan Shivers, George E. Tubb, Joseph Wenzel
- EMPLOYEES:** Thelma Sue Bendy, Sylvia L. Best, Vera Bradley, Janita Brown, Sandra Earle, Kathy Evans, Wanda Ferrell, Glengay Foreman, Juanita Gray, Lantia Kay Henderson, Zora L. Holtbrook, Karen Ivy, Evelyn James, Eleanor Jordan, Jo Ann Jordan, Margaret Kottong, John B. Linsinger, Kathy Moore, Tommie Sue Moore, Alma Pentecost, Lucy Pankas, Linda Richter, Vera Wahl, Vicki Roberts, Wilma Ray Smith, Susan Stanghill, Carol Stewart, Norma Jean Turner, Lisa D. Walker, Vera Wahl, Susan Wajay



CITIZENS STATE BANK
P. O. BOX 109 WOODVILLE, TEXAS 75979

"Give Us A Chance To Say Yes"

EACH DEPOSITOR INSURED TO \$40,000.00
FDIC
FEDERAL DEPOSIT INSURANCE CORPORATION

Helpful Creatures

Thank Goodness For Snakes

Thank goodness for snakes. Those who suffer from hemophilia—the fear of snakes will be dulled, but the truth is that snakes are very helpful creatures, according to the current issue of Ranger Rick's Nature Magazine.

Because they eat rodents, insects and other pests, both poisonous and harmless snakes are a special friend of the farmer, says the children's monthly published by the National Wildlife Federation.

All snake venoms are comprised of enzymes that attack a bitten victim's nerves, blood, or muscles. Scientists are now able to isolate some of these enzymes to fight disease.

Cobras, an enzyme from cobra venom, is a powerful painkiller for patients suffering from arthritis, cancer, or leprosy.

While some poisonous snakes help fight disease, about 2,600 species are poisonous and other help fight crime. Like Russell's viper is used to treat hemophilia, a blood plasma defect that prevents normal clotting. On the other hand, says Ranger Rick, an enzyme from another viper's venom helps dissolve blood clots that can cause heart attacks and strokes.

And at a jewel exhibit in Stockholm, Sweden, three snakes were put inside the display case which held the "Star of Lanka," a gem then valued at \$429,000. No burglar alarms were needed.

TMIP Program To Limit Taxes

The recent tax revolts calling for holding a line on government spending are prompting future tax increases. To illustrate why we need the Texas Management Internship Program (TMIP), comments Gregory Moore, State Coordinator with the Texas Merit System Council.

Moore's eyes light up as he continues, "TMIP is designed to attract graduates who have received special training in managing public programs and policies. With the public's dissatisfaction with the services they are receiving for the tax dollars they are spending, there is a great demand for effective managers who can control costs and improve services."

The goal of the program is to place 25 outstanding public management graduates in one-year internships with Merit System agencies.

To become an intern, an applicant must be a recent graduate or graduate student in public management and be nominated by his school dean. The nominee is then interviewed by a panel.

Those applicants scoring highest will be available for employment in one-year management internships in state agencies served by the Texas Merit System Council. In addition, who successfully complete their internships will be eligible for regular Merit System appointments.

According to Leo Brockmann, Director of the Texas Merit System Council, "The state effort is based, was formulated by a recent graduate of graduate student in public management and is nominated by his school dean. The nominee is then interviewed by a panel."

The Merit System Council is the chief agency Texas has to a civil service system. Operating under federal guidelines, Merit System Council provides personnel for ten state agencies that receive certain federal grant-in-aid funds.

"Names of individuals making the top ten scores for a particular classification are placed on the register according to rank. When a member agency has an opening, it requests the list for interviewing."

Participating are the Employment Commission, Air Control Board, Commission on Alcoholism, Governor's Committee on Aging, Surplus Property Agency, Drug Abuse Division, Disaster Emergency Services, and the Department of Health, Human Resources, and Mental Health and Mental Retardation.

LU Studies Freon Dangers

BEAUMONT—Low levels of fluorocarbon 11, commonly called Freon, have been found to kill or cause lung and liver damage to laboratory rats, according to a study now being conducted at Lamar University.

The two-year study by Dr. J. Leon McGraw Jr. in the Biology department has found lung and liver damage in lab rats in controlled experiments where freon was inhaled at 2.5 percent of the air.

"The cellular damage consisted of mitochondrial rupture in the lung and liver tissue," McGraw said, "and these two organs are the only two we've tested thus far."

It makes us wonder what other parts of the body are affected."

According to McGraw, mitochondria are the "power house" of each cell in the body in all multicellular animals, man included. The damage was detected with an electron microscope that can scan tissue samples with as much as 80,000 magnification.

"The mitochondria make each cell 18 times more efficient in utilization of carbohydrates. Without that efficiency, no living organism can exist," McGraw said.

"Commercial industries use some freon, but air conditioning repairmen seem to be more exposed to the gas than anyone else. Air conditioning systems utilize the gas, until now always considered an inert gas with little or no effect on humans. But air-conditioning repairmen seem to suffer a number of bad effects, especially eye trouble, following prolonged exposure. The rats in our tests suffered the same symptoms," McGraw said.

Spray cans for many years have been using freon as a propellant, although recently it's use has been cut back because of possible damage to the ozone layer in our atmosphere. McGraw cited an example of research by chemists that showed a marked increase in freon levels in humans following a simple spray of freon-propelled deodorant under each arm.

"Breathing the deodorant mist absorbed from into the lungs, but the major part of the absorption came from skin contact with the spray under each arm," McGraw said.

The Lamar biologist said cell efficiency is impaired with the loss of from 10 to 20 percent of the mitochondria in each cell.

"There are some 1200 mitochondria in each liver cell, a loss of mitochondria would cut back energy produced from each cell, ultimately slowing the working potential of the cells," McGraw said.

"The liver has some 117 functions in the body. If any one function is impaired, if the liver fails to metabolize something or detoxify one of the body poisons, there can be trouble."

In the lab tests, rats were kept in partial-vacuum chambers with oxygen over necessary gases and a 2.5 percent mixture of freon pumped in.

Within three or four days the lung and liver damage occurred. The rats were subjected to as much as 20 days of freon at 2.5 percent without dying, although a 5 percent mixture caused respiratory failure in two to three days.

"At the present time McGraw plans still more testing, at lower levels of freon, to determine the lowest level of absorption required to damage lung and liver tissue. We'll get down as far as one quarter of one percent, and test the rats for any further cell damage," McGraw said.

Fires - A Growing Problem

Residential fires resulting in the loss of life and property are a growing problem throughout the United States. In 1977, 5,200 persons died and property losses exceeded five billion dollars as a result of residential fires.

Noting that approximately 83 percent of residential multiple-death fires occur between 8:00 a.m. and 8:00 p.m. when people are asleep and unaware of the development of a fire, Texas Safety Association President, Glyn Covington, recommends the installation of early-warning fire-detection devices. The manufacturer's recommendations for mounting and servicing detectors should be followed. A number of inexpensive smoke detectors have been installed as recommended by fire protection authorities.

The most common type of fire detector used for residential protection is the single-station smoke detector. The smoke detector typically consists of a sensing chamber and an alarm sounder device which is electrically powered. When the sensing chamber detects smoke a loud alarm is sounded.

Use of the fire detector technology in addition to a practiced drill in the home will help to assure a safe exit from fire, preventing loss of life and greatly limiting property damages.



ALL-REGION MUSICIANS
Marion Garner, Ganita Christian, Donald Morgan, and Scott Deppe were recently selected to the Region X School on Saturday, December 9.

Suit Earns \$7.5 Million For Cranes

Five conservation groups and the state of Nebraska have reached a precedent-setting agreement with an electric power cooperative under which a \$7.5 million trust fund will be established to protect the habitat of the endangered whooping crane along the Platte River in Nebraska.

The trust fund will be provided by the Basin Electric Power Cooperative, of Bismarck, N.D. As part of the agreement, Basin Electric will be allowed to proceed with construction of the \$12 million Graylocks Dam and Reservoir near Wheatlands, Mo.

The trust money, he noted, could be used for the maintenance of sandbars and wetlands, the acquisition of land and water rights or water storage, and the scientific study of whooping cranes and other critical crane habitat on the Platte.

"We are extremely pleased with this compromise," said Dr. Fred R. Servey, of Dry Ridge, Ky., president of the National Wildlife Federation. "This settlement is proof that major energy and water development projects can be built in ways that will not interfere with wildlife habitat. It also demonstrates that the Endangered Species Act is not the inflexible barrier to progress that some have claimed."

Before taking effect, the agreement must be approved by the U.S. Court of Appeals for the Eighth Judicial Circuit, in St. Louis, Mo., and by the Cabinet-level "three-soluble conflicts" committee (created by Congress last fall to settle disputes under Section 5 of the Endangered Species Act).

Plaintiffs with Nebraska and the NWF were the Nebraska Wildlife Federation, an NWF affiliate; the National Audubon Society; the Laramie River Conservation Council; and the Powder River Basin Resource Council.

Dazzle With Dessert

Something traditional, something new. Is that what you want for a holiday dessert as easy and foolproof as a dessert as you can possibly make?

Something easy to make, "yes" is the answer to these queries, then try this Chocolate Egg Nog Pie is the answer to a holiday dessert worthy of the special feasting that accompanies year-end, year-beginning days.

This thrifty pie has something to please everyone: chocolate in the crust and traditional egg nog for the filling. It's a simple, easy-to-make pie that like their chocolate mixed topping with fluffs of festive whipped cream crowned with marshmallows.

There's no need to fret about the crust; it's an easy-to-prepare chocolate crust and butter baked just long enough to set it. The filling is a light custard mixture made with a dairy egg nog. Altogether, it's about as easy and foolproof as a dessert as you can possibly make.

CHOCOLATE EGGNOG PIE
Crust
1 1/2 cups chocolate wafer crumbs
2 tablespoons sugar
1/4 cup (1/2 stick) butter, melted
Mix together crumbs and sugar, stir in butter. Press mixture firmly and evenly against bottom and sides of 9-inch pie plate. Bake in preheated oven at 350 degrees for 5 minutes. Cool.
Filling
1 envelope unflavored gelatin
1/2 cup cold water
1/2 cup sugar
2 tablespoons cornstarch
1/4 teaspoon salt
2 cups dairy egg nog
1 teaspoon vanilla
1/2 teaspoon rum extract
1 cup whipping cream, whip
Sprinkle gelatin over water to soften. Mix together sugar, cornstarch and salt in heavy saucepan; gradually stir in egg nog. Cook over medium heat, stirring constantly, until thickened. Remove from heat and stir in softened gelatin until dissolved. Add vanilla and rum extract. Chill until slightly thickened. Fill in whipped cream. Pour into cooled crust. Chill until set.
Topping
1 cup whipping cream
1/2 cup confectioners' sugar
Chocolate curls
Stemmed marshmallow cherries
Best shipping in an unchilled bowl until foamy. Gradually add sugar, beating until soft peaks form. Spread over pie; garnish with chocolate curls and cherries. 8 servings.

Employers Make Annual Report

Employers will make an annual report on a quarterly basis rather than a quarterly basis, according to the Social Security and Income Tax purposes, effective with the wages paid in 1978.

Annual reporting of wages for agricultural and self-employed, has not changed. State and local governments and employers of domestic employees will still make their reports quarterly.

The reports will be on a Form W-2 and will be used for both social security and income tax purposes. This annual report eliminates the quarterly listing of employees and wages paid. Employers still have to file quarterly reports on Form 941 with Internal Revenue containing wages and tax information.

Employers with computerized payroll systems will report their annual W-2 wages by this method. Social Security can process most types of magnetic tapes and computer diskettes. For large employers who do not have computer facilities, services of a tax and accounting specialist may be beneficial.

Use of computer reporting eliminates need to submit paper Form W-2, saving time and reducing loss from damage and human errors, with resulting savings to both the employer and the Government.

Warren News

BY HEVY RILEY:
Christmas came early to some. Mrs. Irene Conner had 45 of her children, grandchildren and great grandchildren last Saturday night. They had a great time and lots of food.

Mrs. Jennie Lee Harris had her children Sunday. All four of her children with their families were present. Everyone seemed to have the Christmas feeling and enjoyed being together.

Ernest and Edith Findley and children went to a birth day party at a cousin's home in La Porte Sunday, given in honor of Edith's mother, Mrs. Fowler and two aunts, Aunt Belle and Aunt Ida. They were 31 present. Edith's mother is 81 years old.

Rev. Kenneth Cauthen carried Allen Stiggs to E.T.B. U. last Thursday to make application for enrollment in the college.

Mr. Hill Fortenberry is home now after several days in the Tyler County Hospital. Also, Peggie Willford is home, but Mrs. Willford will go to Beaumont for surgery Jan. 3rd.

We are proud to report that Mr. Oliver Bodine is going fine after his second neck surgery.

The youth of the First Baptist Church enjoyed a Christmas party at Dick and Mary Jean Johnson's home Sunday night after the church service.

The Cecil-Riley family went to Huntsville Christian Church for the wedding of their daughter, Janice Riley and Mark Granger. They will live in Conover, La. Mrs. Riley is a teacher in Cline school and Mark is in S.H.S.U. as a senior.

Bill Tolar visited many friends at Nederland last week, while visiting her daughter and family. Mr. and Mrs. Roy Valdes.

Jenetta Griffin has gone to her son, Edward Griffin at Hamshire, Texas. Pat Nowlin's grand-


daughter and her fiancé, Roy Hall, who will be at East Texas Baptist University in January, spent the weekend with Pat.

Shirley and Bill Ponder and family spent the Christmas holidays with their daughter, Carolyn and Wyatt Walsh of McAllen, and her sister, Marilyn Rogers of San Antonio, Mr. and Mrs. R.L. Smith of Red Oak.

Christ Child Birth Re-enactment

The students of Mrs. Phyllis Hull's sixth grade class performed the re-enactment of Jesus' birth before a audience of students in the auditorium on the campus of KHS.

Holiday Season Specials
 (Thru January 1979)
SABINE
Monument Company
 Charles Britnell, Local Representative



\$425.00*
 All Work Custom Engraved.
 283-2468 Hwy. 69 - 3 miles south of Woodville
 * Includes tax, lettering, delivery and setting.

Special Session For Bankers
School To Deal With Ag Loans

COLLEGE STATION—A special session on making agricultural loans will be one of the highlights of the 27th Farm and Ranch Credit School for Commercial Bankers Feb. 12-13 at Texas A&M University's Rudder Center.

Since different agricultural enterprises require specific analysis and consideration, four major loan areas will be examined at the school, points out Dr. Dick Trimble, the school's general chairman. These are crops and machinery, cow-calf operation, feedlot, and dairy loans. Texas bankers who are experienced in making these types of loans will conduct each of the sessions.

In light of the recent National Farm Summit held at Texas A&M University, a special feature of the school will be a presentation of current policy issues in agriculture, says Trimble, an economist with the Texas Agricultural Extension Service. Dr. Ron Knutson, Extension economist in agricultural relief, will act as

moderator to this important aspect of agriculture. Joining Knutson will be a panel of highly qualified policy analysts providing additional insight into how policy decisions may affect commercial bankers.

The school will be kicked off with a session on examining sources of funds for small agricultural banks. Discussions will include how city banks can assist country banks in providing loan funds, and how country banks can acquire additional loan funds in their own area, notes Trimble.

Rounding out the school for commercial bankers will be sessions dealing with crop, livestock and money market outlook information as well as new concepts in marketing agricultural products.

The school is planned for bankers by the Agricultural and Rural Affairs Section of the Texas Bankers' Association. It is sponsored by the TBA, Texas Agricultural Extension Service and Texas Agricultural Experiment Station.

In conjunction with the school, an Agricultural Credit Analysis Workshop will begin the afternoon of Feb. 14 and will continue through the morning of Feb. 16. The workshop will deal with preparing financial statements, analyzing and reconciling farm records, and preparing cash flow projections. Case problems will also be studied and solved, points out Trimble.

Running concurrently with this workshop will be a special three-day Commodity Hedging Session. This session will investigate the mechanics of hedging, hedging decision guides, and what bankers should know about living with a hedged loan.

Trimble invites Texas agricultural financiers to attend the credit school and either of the two workshops. For registration information, write to him at Room 100 Agriculture Building, Texas A&M University, College Station, Texas 77843 or call 713/845-8011.

Trees Are Added To Registry

COLLEGE STATION—Seven trees have been added to the official Registry of Champion Big Trees in Texas. The registry now includes 149 state champion trees of which 50 are certified as national champions—the largest of their species on record.

The Texas Forest Service conducts the Champion Big Tree program to locate outstanding examples of the 200 tree species growing in Texas, to encourage owners to protect and preserve these trees for future generations, to enjoy, and to stipulate a greater appreciation of trees.

The nine new trees include: Black oak (*Quercus velutina*), located in Red River County, owned by Selby Pace; Blackjack oak (*Quercus marilandica*), located in Smith County, owned by Bell Meadows Ranch; and Parley haw (*Crataegus marshallii*), located in Angelina County in Angelina Na-

Robert's Service Center
 Tires • Tire Repair • Minor Auto Repairs
 Lubrication and Auto Parts
 located at L & J General Store
 "The Everything Store" — Spurger
 429-3935 (home) 429-7477

S
T
S

WHERE YOUR MONEY REALLY ADDS UP
 5.25% Regular Passbook Account Equals
 5.39% Annually Compounded Daily

Interest Paid From Date Of Deposit To Date Of Withdrawal

8%
 8-Year Certificate
 \$1,000 Minimum
 YIELDS 8.33% With Daily Compounding

WAYS TO SAVE!

7³/₄	6 Year Certificate \$1,000 Minimum YIELDS 8.06% With Daily Compounding
7¹/₂	4 Year Certificate \$1,000 Minimum YIELDS 7.79% With Daily Compounding
6³/₄	2 1/2 Year Certificate \$1,000 Minimum YIELDS 6.98% With Daily Compounding
6¹/₂	1 Year Certificate \$1,000 Minimum YIELDS 6.72% With Daily Compounding
5¹/₄	Passbook Day-In Day-Out Interest YIELDS 5.39% With Daily Compounding With \$5 minimum

AFTER Christmas SALE!

20% to 30% OFF


Jewelry and Gift items

Many other close-out specials
 Unique, one-of-a-kind items

Christmas Cards
 1/2 price

Bob's Prescription Shop
 1010 W. Bluff 283-3073

Want To Save Money?
 Just because you have insulation laying in your attic doesn't mean your house is properly insulated. **WHY?**
 Layed in or blown in mineral insulation (Fiber-glass or Rock-wool) settles in 5 to 7 years. When mineral insulation settles it loses its insulating value and should be up-graded.



Wattscos has Insul-K insulation designed to be used over other insulation. Insul-K insulation will cut your heating and cooling bills up to 60 percent or better. It is rodent proof, smother's out fire, stops wall sweating, is guaranteed for life of building. To see an amazing demonstration and how this material works — you own it to yourself — No Obligation.

WE ARE INSULATION SPECIALISTS. WE HAVE THE MOST MODERN EQUIPMENT FOR SPRAY-ON APPLICATIONS, LOOSE-FILL, AND SPECIAL CAVITY FILL EQUIPMENT.

Let the savings on your utility bill pay for your insulation. Check with Wattscos for information on tax rebates for insulation.

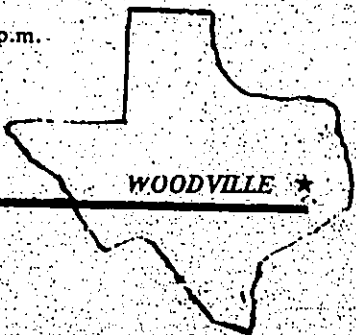
9 chances out of 10 you are wasting 30 to 50 cents on the \$1.00.

Free analysis and estimate on your home. Our contribution to conserving the nation's energy.

WATTSOCO
 AIR CONDITIONING & HEATING
 ENERGY MANAGEMENT SPECIALISTS
 109 E. Bluff 283-3696

SOUTHEAST TEXAS SAVINGS and Loan Association
 P.O. Box 936 Woodville, Texas
 Two New Locations Open In Livingston And Kountze.

OPEN: MONDAY THRU THURSDAY 9 a.m. to 3:30 p.m. FRIDAY 9 a.m. to 5:30 p.m. Closed on Saturday



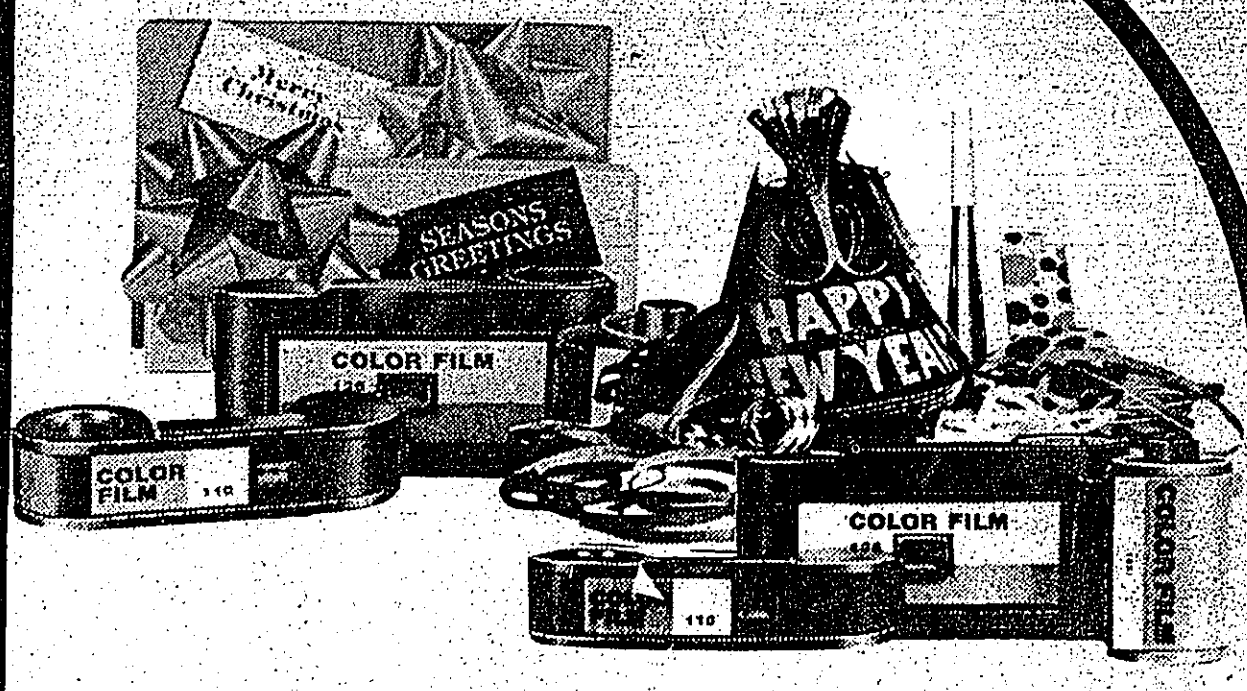
\$40,000 MAXIMUM INSURANCE FOR EACH DEPOSITOR
 BY FEDERAL SAVINGS AND LOAN INSURANCE CORP.
 Serving All Of Southeast Texas
 283-3747

50% OFF

ON ALL CHRISTMAS DECORATIONS AND ACCESSORIES

1/3 OFF

ON ALL GIFT ITEMS!!



Holiday Film Developing Specials

12 Exposure
Developing* & Printing
COLOR PRINT FILM
\$ **1.89**

20 Exposure
Developing* & Printing
COLOR PRINT FILM
\$ **2.69**

Developing* 20 Exposure
COLOR SLIDES
OR
Movie Film Developing*
SUPER 8 & REG 8
\$ **1.09**

*From Kodak, Focal, Fuji, GAF and Fotomat films

\$ A V O N DRUGS
106 S. Charlton 283-2163 Woodville, Texas
"OUR NAME IS OUR MOTTO"

**Graduate,
Job Study,
Completed**

BEAUMONT-The College of Technical Arts at Lamar University recently completed a study of its graduates to determine their job status.

Over 67 percent of the College's 275 graduates responded to the questionnaire that asked about their employment status and opinions of their college training.

The students who graduated during the 1976-77 academic year were mailed the questionnaires last November. The results are computed for the graduates' first year of employment.

All the Associate of Applied Science degree holders reported an average salary of \$975 per month with 18.8 percent earning \$1,000 or more per month and 30.1 percent earning more than \$1,200 per month during their first year of employment.

As a group, 86.4 percent of the graduates were working at full-time jobs.

Some of the graduates were continuing their education, while others were unavailable for employment due to marriage, sickness and other reasons.

The graduates (68.8 percent) reported the local job market as being "good" or "very good." Over 80 percent of the graduates reported that their training in Technical Arts was "very useful."

The males in the 1976-77 graduating class made an average monthly salary of \$1,004 with 33.9 percent making more than \$1,200 per month; whereas, the females reported an average monthly salary of \$903 with 20 percent making more than \$1,200 per month. Females reported a lighter job market than did the males, but more women (88.2 percent) were working full-time than men (87.5 percent). Black graduates reported a \$964 per month average salary, but 35.7 percent reported making more than \$1,200 per month.

Average monthly salaries reported by program are: Real Estate (\$1,200); Mid-Management (\$1,050); Drafting (\$930); Electronics (\$1,010); Machine Tools (\$1,010); Welding (\$950); Diesel Mechanics (\$904); and Air Conditioning (\$950).

Some of the averages might be misleading because of small numbers of graduates in a program. These averages represent base salaries and do not include overtime payments. Salaries of students who select jobs close to home are usually less than those of graduates who are willing to relocate.

In summary, a Technical Arts graduate can expect to find a favorable job market for the skills they have learned in college. Dean K.E. Shipper, College of Technical Arts, said. While salaries ranged widely, a good student can expect to receive about \$12,000 during his or her first year of employment, he said.

**Group Needs
Help In**

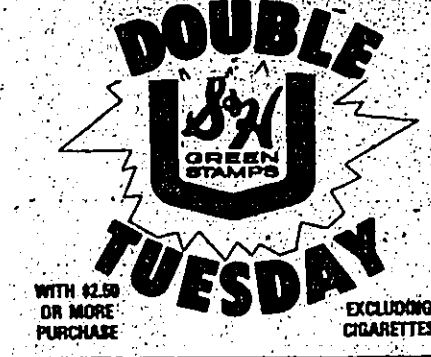
Eagle Census

The National Wildlife Federation is calling on federal and state agencies as well as bird clubs and other outdoor groups to assist in its first nationwide bald eagle count.

The survey, which is planned as an annual census, will be conducted during the last three weeks of January under the auspices of NWF's Raptor Information Center. That period was chosen because eagle movements are at a minimum at that time of the year, according to William S. Clark, director of the Raptor Information Center, Elton, Pa.

Moilte, Ill., an NWF consultant who has conducted eagle surveys in the Mississippi Valley for many years, will be cooperating in this nationwide survey. He said that eagles are plentiful and not threatened in Alaska, and not found in Hawaii. The survey will be confined to the "lower 48" states.

The rate estimate of the number and distribution of wintering bald eagles in the 48 contiguous states," said Thomas L. Kimball, NWF Executive Vice President. "The mid-winter census will provide valuable information on local numbers and age ratios and will identify important wintering locations." In the past, this data has been partly conjectured due to incomplete coverage of all potential



**WE WILL BE OPEN
JAN. 1, 1978
NEW YEAR'S DAY
FOR YOUR SHOPPING
CONVENIENCE!**

Happy New Year TO ALL

PURINA REGULAR **DOG CHOW** 2 Lb. Bag \$5.99
HY-TOP PINK GRAPEFRUIT JUICE 48 OZ. CANS 59¢

Ranch Style With Bacon **BLACK EYE PEAS** 15 oz. cans **25¢**
Texas Guard Salaries Profitable

Hy-Top Dry **BLACK EYE PEAS** 12 Oz. pkg. limit 2 bags **19¢**

Hy-Top (all grinds) **COFFEE** lb. can limit 1 w/7th Pur. or more **\$1.89**

TexasSweet **GRAPEFRUIT** 12 for \$1

Hy-Top **ICE CREAM** 1/2 gallon round carton asstd. flavors **\$1.19**

Soft & Pretty Bathroom **TISSUE** 4 roll pkg. white or decor. **89¢**

Pillsbury **FLOUR** 5 lb. bag plain or unbleached **79¢**

FRESH PRODUCE...WITH THAT JUST-PICKED FLAVOR!

TexasSweet **Grapefruit** 12 for \$1
SWEET YELLOW ONIONS lb. 15¢
EXTRA FANCY WASHINGTON RED DELICIOUS APPLES lb. 39¢
US NO. 1 FAST LEAF YAMS lb. 39¢
WRAPPED BUTTERNUT TURNIPS lb. 15¢
CALIFORNIA SUNKIST LEMONS FOR 39¢

California **CELERY** Stalk 39¢
Fresh **COLD SLAW** 3 8 oz. pkgs. \$1
CALIFORNIA AVOCADOS FOR 4 \$1.00
Fresh Green **CABBAGE** lb. 12¢

FROZEN FOOD SPECIALS!

Hy-Top **PIZZAS** 13 oz. size **79¢**
CHEESE SAUSAGE HAMBURGER PEPPERONI
TROPHY SLICED **STRAWBERRIES** 1007 PKG. 43¢
BANQUET FRIED **CHICKEN** 2 LB. SIZE \$2.39
KITCHEN TRAY CHICKEN TURKEY BEEF MEAT PIES 6.5V SIZE 21¢
LYNDEN FARM FRENCH FRIES 2 LB. BAG 49¢

SHOP OUR FINE MEAT DEPARTMENT FOR QUALITY MEATS.....

Wilson Corn King **PORK LOIN** lb. Quarter Sliced **\$1.19**

Dry Salt **JOWLS** lb. **53¢**

Neuhoff All Meat **FRANKS** 12 oz. pkgs. **83¢**

Heinz Strained **BABY FOOD** 4 1/2 oz. Jars Fruits-Vegs-Desserts **\$1.69**

Hordens Delicious **BUTTER MILK** 1/2 gallon carton **89¢**

Hy-Top White or Yellow **CORN BREAD MIX** 6 oz. pouch **\$1.59**

LOIN PORK CHOPS \$1.83
PORK CHOPS \$1.73
BACKBONE \$1.53
LOIN ROAST \$1.53
SPARE RIBS \$1.13
FRANKS \$1.73
BONELESS HAMS \$2.89
SLAB SLICED BACON \$1.59

CHARKETTE STEAKS \$1.89
DUTCH OVEN STEAKS \$1.99
BONELESS STEW \$1.69
GRAVY STEAKS \$2.49
HORMEL LITTLE SIZZLERS 12 OZ. \$1.19
HORMEL SLICED HAM 4 OZ. (4 ITEMS) \$1.19
HORMEL SMOKED JOWLS \$1.93
OSCAR MAYER WEINERS-FRANKS OR CHEESE WEINERS \$1.49

OSCAR MAYER **CHILLI with BEANS** lb. \$1.59
OSCAR MAYER SOUTHERN BRAND SAUSAGE (2 LB. 13.94) lb. \$1.69
KRAFT ASSORTED **READY DIPS** 8 OZ. 73¢
KRAFT **VELVEETA** 2 LB. \$2.89
KRAFT SHARP OR EXTRA SHARP **CRACKER BARREL CHEESE** 12 OZ. \$1.57
CARLYONS **PIMENTO CHEESE** 14 OZ. \$1.53
BROOKSHIRE **LUNCH MEATS** lb. \$1.19
RATH ROLL **SAUSAGE** 2 LB. \$1.99

Neuhoff Harvest Brand **HOT LINKS** lb. **89¢**

100 FREE STAMPS With Purchase Of Any Jumbo Pack **BABY BEEF**

Rath Blackhawk Sliced **BACON** lb. **\$1.69**

Facial Tissues **PUFFS** Box 200 **73¢**

Dip Style **POTATO CHIPS** lb. can **\$1.79**

Folger's Instant **COFFEE** 10 oz. Jar **\$3.99**

KRAFT JETS **MARSHMALLOWS** 16 OZ. BAG 65¢
LIFTON WITH SUGAR **ICE TEA MIX** 36 OZ. SIZE \$2.59
BAMA SMOOTH OR CRUNCHY **PEANUT BUTTER** 18 OZ. JAR \$1.15
BORDEN'S **EGG NOG** QUART 99¢
HY-TOP REGULAR TORTADO FLAVOR **TORTILLA CHIPS** 6 OZ. 59¢
SKINNERS LONG **SPAGHETTI** 12 OZ. PKG. 45¢

BENCO **YELLOW POPCORN** 2 LB. BAG 69¢
HY-TOP BRIOUETS **CHARCOAL** 10 LB. BAG \$1.57
HY-TOP YELLOWING **PEACHES** NO 2 1/2 CANS 67¢
MAXWELL HOUSE **INSTANT COFFEE** 10 OZ. JAR \$3.99
KRAFT MACARONI & CHEESE **DINNERS** 14 1/2 OZ. PKGS. 69¢
KRAFT **CHEEZ WHIZ** 16 OZ. JAR \$1.79

PURINA ORIGINAL **CAT CHOW** 10 LB. BAG \$4.29
IMPERIAL WHIPPED **MARGARINE** LB TUB 79¢
MILNOT CANNED **MILK** 13 OZ. CAN 39¢
PUREX HEAVY DUTY LIQUID LAUNDRY **DETERGENT** 20 OZ. 64 OZ. SIZE \$2.19
HY-TOP SNACKER **CRACKERS** 11 OZ. SIZE 69¢
HORMEL REGULAR OR HOT **CHILI** 15 OZ. CAN 99¢

Fruit Drinks Hawaiian **PUNCH** 46 oz. cans asstd. flavors **75¢**

Liquid Bleach **PUREX** gallon plastic **69¢**

Del Dixie **PICKLES** Quart Jar Sour or Dill **99¢**

fourgone \$2.79 each **BUG KILLER** kills 17 kinds of bugs... works automatically

Automatic Dishwashing **CASCADE** King Size **\$1.79**

Brookshire Bros. THE BEST FOR LESS

Kraft **MIRACLE WHIP** 48 oz. jar **\$1.99**

Hy-Top Low Fat **MILK** 1/2 gallon carton **79¢**

SPECIAL NEW YEAR'S DAY HOURS: 8 a.m.-6 p.m.

Rooney Paper **TOWELS** Big Rolls Assorted Colors **75¢**

Hy-Top **DIPS** 8 oz. carton **43¢**

FIRE LOGS EACH \$1.19
FOLGER'S FLARED **COFFEE** 11 OZ. CAN \$1.99
16 OZ. CAN \$3.99

PILLSBURY HUNGRY JACK **BISCUITS** 10 OZ. CANS 45¢
100 **EXTRA STAMPS** With the Purchase of Pkg. 10 Glad Trash Bags COUPONS EXPIRE JANUARY 2, 1979
100 **EXTRA STAMPS** With the Purchase of Pkg. 10 Glad Trash Bags COUPONS EXPIRE JANUARY 2, 1979

50 **EXTRA STAMPS** With the Purchase of \$5.00 Or More Purchase (Excluding Cigarettes) COUPONS EXPIRE JANUARY 2, 1979
50 **EXTRA STAMPS** With the Purchase of \$5.00 Or More Purchase (Excluding Cigarettes) COUPONS EXPIRE JANUARY 2, 1979

Becoming a member of the Texas Army National Guard is more profitable than ever before. New members may be eligible for a \$1,500 enlistment bonus or a \$2,000 educational assistance bonus for joining one of three major units in the Texas Army National Guard.

The special enlistment bonuses are two of three new monetary bonuses given new and current members of selected National Guard units around the country. The bonuses were recently announced by the Secretary of the Army Clifford L. Alexander, Jr. They became effective Dec. 1.

The third bonus, up to \$1,000 goes to certain existing members of two of the three units participating in the new program.

New recruits joining one of the units in the state-wide 49th Armored Division, the 142nd Support Center in Abilene, or the 111th Support Group in Austin, will be eligible for \$1,500 in addition to their regular pay.

The enlistment bonus will go to non-prior service recruits enlisting for a term of six years in one of the three Texas Guard units. In order to receive the bonus, new recruits must be high school graduates meeting certain intelligence levels. They must also enlist for a specific vacancy in one of the participating units and meet all other normal enlistment criteria.

One-half of the bonus will go to the recruit following completion of basic and advanced training. The balance is paid in annual increments over the first four years of the six year enlistment.

All three units participating in the special bonus program are offering an alternative education assistance program to new members with similar qualifications.

The educational assistance incentive will provide fifty percent of education expenses of a member for instruction at an accredited institution. The educational assistance will cover up to \$500 a year and a total of \$2,000 for the term of enlistment.

The third newly authorized bonus is available to some members of the 142nd Support Center in Abilene and the 111th Support Group in Austin.

Members of these two units can re-enlist for a vacancy for which they are qualified and receive \$1,800 or \$900 as a bonus. The amount will be determined by the length of time for which they re-enlist.

The new bonus is designed for relatively new members of the Texas Army National Guard. Guardsmen with more than eight years service are not eligible for the bonus.

The re-enlistment bonus will not be paid in one lump sum. One-half will be paid the first day of the new term of service. The remainder will be paid in increments of \$150 annually.

These three new monetary incentives all have limiting conditions of award. Individuals interested in learning if they are qualified for one of the incentives should contact their nearest Texas Army National Guard Recruiting and Retention Office, P.O. Box 5218, Austin, Texas 78763.

U.S., MEXICO ANIMAL HEALTH PROGRAMS GET SUPPORT
The U.S. and Mexico will continue to work together closely in animal health programs, according to officials of the Southwest Animal Health Research Foundation (SWAHRF). Joint efforts between the two countries are paying off in the success of scorpion eradication efforts. Mexican ranchers are becoming more cultured about animal health programs, according to L.A. Kincaid, SWAHRF president.

ACCIDENT CONTROL - Poor work procedures often lead to accidents, points out the Texas Agricultural Extension Service. These include: using defective tools, using ladders or feet instead of proper tools, operating at an unsafe speed, removing or making safety devices inoperative, and talking or eating by not following recommended job procedures.



BIG STAR
USDA
HEAVY BEEF
CHUCK ROASTS
(BONELESS)
LB.

FIRST CUT PORK CHOPS 99¢ lb.
GROUND BEEF lb. **1¹⁹**
BRYAN FRANKS lb. **99¢**
MAPLE RIVER LB BREAKFAST ROLL lb. **59¢**
OUR SPECIAL HYDE PARK BACON lb. **1¹⁹**

BIG STAR
USDA
FRYERS
lb. **43¢**

PUFF 200 ct. CLEANING TISSUE 59¢

SALT JOWLS LB. 69¢

FRYER PARTS
CUT UP lb. **49¢**
BREAST lb. **99¢**
LEGS lb. **99¢**
THIGHS lb. **89¢**
LIVERS & Gizzards lb. **89¢**

BIG STAR
JENO'S PIZZA
JENO ASSTD. PIZZAS
10 IN. **89¢**

BIG STAR
LIBBY ORANGE JUICE **2/89¢**
HYDE PARK BLACK EYE PEAS **59¢**

BIG STAR
SNOWDRIFT SHORTENING **\$1⁴⁹**
CONTADINA TOMATO SAUCE **5/89¢**
8 oz.

TWIN PAK CHIPS 9 OZ. 79¢

BIG STAR
HYDE PARK DRY **BLACK EYED PEAS FREE!!**
with 7th purchase or more Limit one please.

LIGHT CRUST FLOUR 5 lb. 79¢	DUNCAN HINES 18 oz. CAKE MIXES 69¢
CARNATION COFFEEMATE 16 oz. \$1¹⁹	AJAX CLEANSER 14 oz. 4/99¢
TIDE 84 oz. 2²⁹	KRAFT VELVEETA CHEESE 2 lb. \$2³⁹
PHILADELPHIA 8 oz. CREAM CHEESE 59¢	HUNTS CATSUP 32 oz. 79¢
DEL DIXIE POLISH 48 oz. DILL PICKLES 79¢	PACE PICANTE SAUCE 8 oz. 49¢
LIBBYS TOMATO JUICE 46 oz. 49¢	LIBBYS FRUIT COCKTAIL 16 oz. 49¢
ROSEDALE CORN 16 oz. 3/89¢	DEL MONTE PEAS 16 oz. 3/99¢
PILLAR ROCK RED SOCKEYE SALMON 7 oz. 1²⁹	WOLF PLAIN CHILI 19 oz. 99¢
SWIFT 24 oz. BEEF STEW 89¢	ARMOUR POTTED MEAT 3 oz. 4/89

BIG STAR
TRAPPEY BLK. EYES (JAL. or W/BAGON) 15 OZ. **3/99¢**

WHITE CLOUD B/R TISSUE 4 CT. **89¢**

BIG STAR
MIRACLE WHIP SALAD DRESSING **99¢**

FRESH PRODUCE
BANANAS
TEXAS ORANGES 99¢
GRAPEFRUIT 99¢
APPLES 99¢

BIG STAR
U.S. NO. 1 RUSSET POTATOES 5 LB. BAG **59¢**

WINTER FREE CASH
ENTER EACH WEEK
DeLois Griffith FAILED TO HAVE CARD PUNCHED!
JACKPOT NOW **\$450**

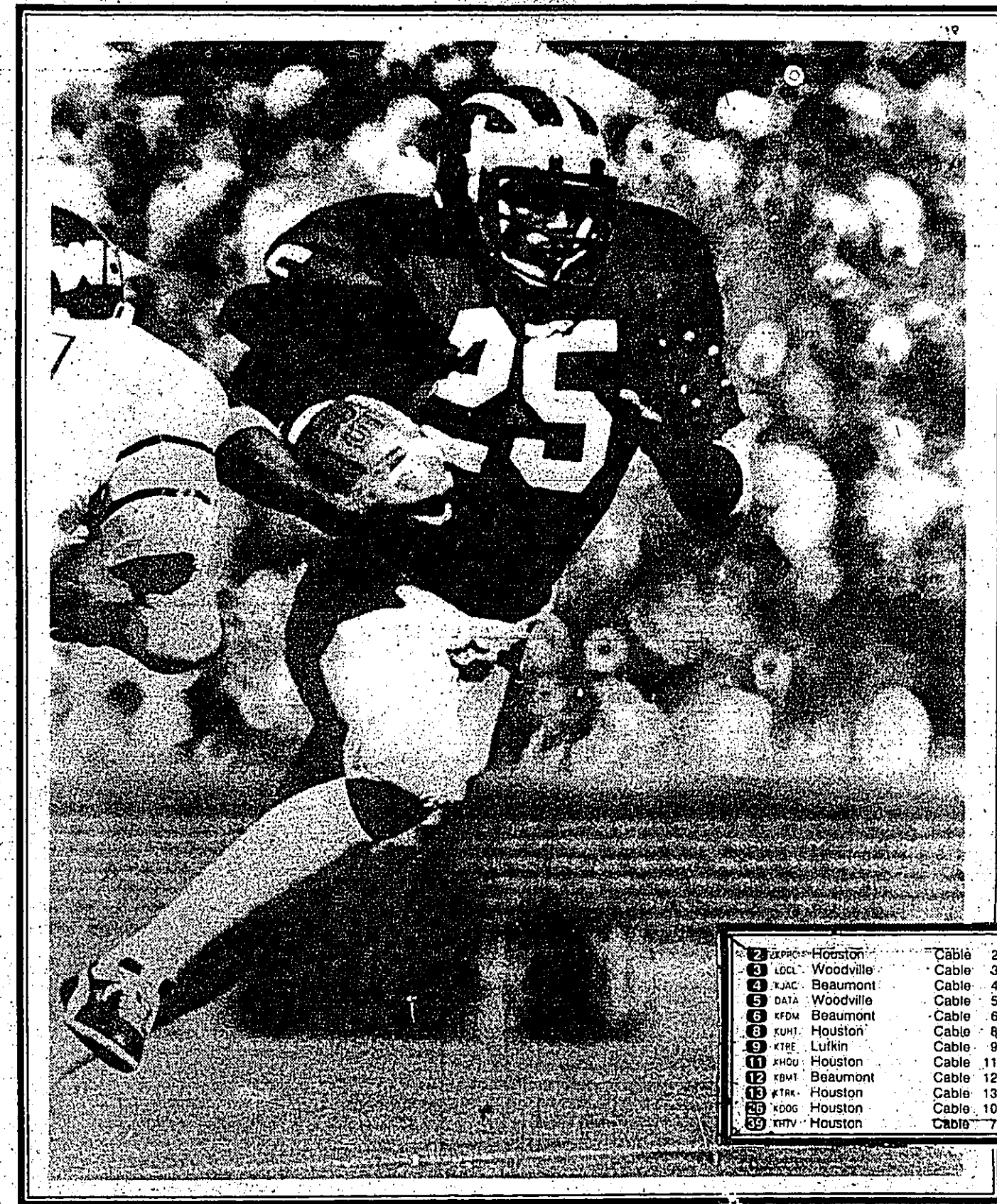
BIG STAR
SWIFT VIENNA SAUCE 5 OZ. **3/89**

BIG STAR
96 OZ. DOWNY FABRIC SOFTENER **2⁴⁹**
1 GAL. PUREX BLEACH **69¢**



TV Spotlight

Dec. 31, 1978 - Jan. 6, 1979



2	abc - Houston	Cable 2
3	abc - Woodville	Cable 3
4	abc - Beaumont	Cable 4
5	abc - Woodville	Cable 5
6	abc - Beaumont	Cable 6
7	abc - Houston	Cable 7
8	abc - Lufkin	Cable 8
9	abc - Houston	Cable 9
10	abc - Beaumont	Cable 10
11	abc - Houston	Cable 11
12	abc - Beaumont	Cable 12
13	abc - Houston	Cable 13
14	abc - Houston	Cable 14
15	abc - Houston	Cable 15

Harlan Huckleby of the University of Michigan will be up against the University of Southern California in the 65th Rose Bowl, New Year's Day, on NBC.

'Tell 'em you saw it in ... The Tyler County BOOSTER

DAYTIME

- 7:00 A.M. - Today
7:00 A.M. - Local Messages
7:00 A.M. - Weather
7:00 A.M. - CBS Morning News
7:00 A.M. - Lillas, Yoga And You
7:00 A.M. - Good Morning America
7:00 A.M. - News
7:00 A.M. - Tom & Jerry
7:00 A.M. - Speed Racer
7:15 A.M. - News
7:30 A.M. - Sesame Street
7:30 A.M. - Morning Show
7:30 A.M. - Good Morning America
7:30 A.M. - Popeye
8:00 A.M. - Captain Kangaroo
8:00 A.M. - Woody Woodpecker
8:00 A.M. - Banana Split
8:30 A.M. - Greta
8:30 A.M. - A. M. Houston
8:30 A.M. - Leave It to Beaver
9:00 A.M. - Phil Donahue
9:00 A.M. - Card Sharks
9:00 A.M. - All in the Family
9:00 A.M. - Praise the Lord Club

- 9:15 A.M. - Father Knows Best
9:15 A.M. - News
9:30 A.M. - Jeopardy
9:30 A.M. - Price Is Right
9:30 A.M. - Courtship of Eds.
9:30 A.M. - Greta
9:30 A.M. - High Rollers
9:30 A.M. - Local Messages
9:30 A.M. - Greta
9:30 A.M. - Happy Day
9:30 A.M. - Partridge Family
9:30 A.M. - Weather
9:30 A.M. - Wheel of Fortune
9:30 A.M. - Love of Life
9:30 A.M. - Family Feud
9:30 A.M. - Jokers Wild
9:30 A.M. - Movie
11:00 A.M. - America Alive
11:00 A.M. - Weather
11:00 A.M. - Young and the Restless
11:00 A.M. - \$20,000 Pyramid
11:00 A.M. - Calendar
11:15 A.M. - News

- 11:30 A.M. - Search for Tomorrow
11:30 A.M. - Ryan's Hope
11:30 A.M. - News
11:30 A.M. - All My Children
11:30 A.M. - Warren Roberts
11:30 A.M. - Perry Mason
11:30 A.M. - Courtship of Eds.
11:30 A.M. - Days of Our Lives
11:30 A.M. - As the World Turns
11:30 A.M. - Access
11:30 A.M. - Local Messages
11:30 A.M. - One Life to Live
11:30 A.M. - Green Acres
11:30 A.M. - FBI
11:30 A.M. - News
11:30 A.M. - The Doctors
11:30 A.M. - Guiding Light
11:30 A.M. - Get Smog
11:30 A.M. - Another World
11:30 A.M. - General Hospital
11:30 A.M. - Porky & Friends
11:30 A.M. - Flintstones

- 2:30 P.M. - M*A*S*H
2:30 P.M. - All in the Family
2:30 P.M. - New Mickey Mouse Club
2:30 P.M. - Mighty Mouse
2:30 P.M. - Greta
2:30 P.M. - All My Children
2:30 P.M. - Warren Roberts
2:30 P.M. - Perry Mason
2:30 P.M. - Days of Our Lives
2:30 P.M. - As the World Turns
2:30 P.M. - Access
2:30 P.M. - Local Messages
2:30 P.M. - One Life to Live
2:30 P.M. - Green Acres
2:30 P.M. - FBI
2:30 P.M. - News
2:30 P.M. - The Doctors
2:30 P.M. - Guiding Light
2:30 P.M. - Get Smog
2:30 P.M. - Another World
2:30 P.M. - General Hospital
2:30 P.M. - Porky & Friends
2:30 P.M. - Flintstones

- 3:00 P.M. - Sesame Street
3:00 P.M. - Brady Bunch
3:00 P.M. - Three Stooges
3:00 P.M. - Woody Woodpecker
3:00 P.M. - Super Heroes
3:00 P.M. - Odd Couple
3:00 P.M. - New Mickey Mouse Club
3:00 P.M. - Weather
3:00 P.M. - Match-Game
3:00 P.M. - Edge of Night
3:00 P.M. - Dinah!
3:00 P.M. - Movie
3:00 P.M. - Battle of the Planets
3:00 P.M. - Bugs Bunny
3:00 P.M. - 3:15 P.M. - News
3:30 P.M. - My Three Sons
3:30 P.M. - Leave It to Beaver
3:30 P.M. - Dick Van Dyke
3:30 P.M. - Mister Rogers Neighborhood
3:30 P.M. - New Mickey Mouse Club
3:30 P.M. - Superman
3:30 P.M. - Varied Programs
3:30 P.M. - Flintstones
3:30 P.M. - Zoom
3:30 P.M. - Bob Newhart
3:30 P.M. - Local Messages
3:30 P.M. - Sanford and Son
3:30 P.M. - Dream of Jeannie

- 3:30 P.M. - Six Million Dollar Man
3:30 P.M. - Sesame Street
3:30 P.M. - Brady Bunch
3:30 P.M. - Three Stooges
3:30 P.M. - Woody Woodpecker
3:30 P.M. - Super Heroes
3:30 P.M. - Odd Couple
3:30 P.M. - New Mickey Mouse Club
3:30 P.M. - Weather
3:30 P.M. - Match-Game
3:30 P.M. - Edge of Night
3:30 P.M. - Dinah!
3:30 P.M. - Movie
3:30 P.M. - Battle of the Planets
3:30 P.M. - Bugs Bunny
3:30 P.M. - 3:15 P.M. - News
3:30 P.M. - My Three Sons
3:30 P.M. - Leave It to Beaver
3:30 P.M. - Dick Van Dyke
3:30 P.M. - Mister Rogers Neighborhood
3:30 P.M. - New Mickey Mouse Club
3:30 P.M. - Superman
3:30 P.M. - Varied Programs
3:30 P.M. - Flintstones
3:30 P.M. - Zoom
3:30 P.M. - Bob Newhart
3:30 P.M. - Local Messages
3:30 P.M. - Sanford and Son
3:30 P.M. - Dream of Jeannie

- 4:00 P.M. - Electric Company
4:00 P.M. - ABC News
4:00 P.M. - Live at Five
4:00 P.M. - Andy Griffith
4:00 P.M. - Bewitched
4:00 P.M. - News
4:00 P.M. - The Doctors
4:00 P.M. - Guiding Light
4:00 P.M. - Get Smog
4:00 P.M. - Another World
4:00 P.M. - General Hospital
4:00 P.M. - Porky & Friends
4:00 P.M. - Flintstones

- 7:00 P.M. - Orange Bowl
7:00 P.M. - News
7:00 P.M. - CBS News
7:00 P.M. - News
7:00 P.M. - News
7:00 P.M. - News
7:00 P.M. - News
7:00 P.M. - News
7:00 P.M. - News
7:00 P.M. - News
7:00 P.M. - News

- 7:00 P.M. - Orange Bowl
7:00 P.M. - News
7:00 P.M. - CBS News
7:00 P.M. - News
7:00 P.M. - News
7:00 P.M. - News
7:00 P.M. - News
7:00 P.M. - News
7:00 P.M. - News
7:00 P.M. - News

- 7:00 P.M. - Orange Bowl
7:00 P.M. - News
7:00 P.M. - CBS News
7:00 P.M. - News
7:00 P.M. - News
7:00 P.M. - News
7:00 P.M. - News
7:00 P.M. - News
7:00 P.M. - News
7:00 P.M. - News

- 7:00 P.M. - Orange Bowl
7:00 P.M. - News
7:00 P.M. - CBS News
7:00 P.M. - News
7:00 P.M. - News
7:00 P.M. - News
7:00 P.M. - News
7:00 P.M. - News
7:00 P.M. - News
7:00 P.M. - News

- 7:00 P.M. - Orange Bowl
7:00 P.M. - News
7:00 P.M. - CBS News
7:00 P.M. - News
7:00 P.M. - News
7:00 P.M. - News
7:00 P.M. - News
7:00 P.M. - News
7:00 P.M. - News
7:00 P.M. - News

- 7:00 P.M. - Orange Bowl
7:00 P.M. - News
7:00 P.M. - CBS News
7:00 P.M. - News
7:00 P.M. - News
7:00 P.M. - News
7:00 P.M. - News
7:00 P.M. - News
7:00 P.M. - News
7:00 P.M. - News

- 7:00 P.M. - Orange Bowl
7:00 P.M. - News
7:00 P.M. - CBS News
7:00 P.M. - News
7:00 P.M. - News
7:00 P.M. - News
7:00 P.M. - News
7:00 P.M. - News
7:00 P.M. - News
7:00 P.M. - News

QUALITY BUILT FILTER-FLO WASHER
Standard Capacity, Single Speed Washer
3 Water Levels let you match the water level to load size
2 Cycles-Regular and Permanent Press
5 Temperature Combinations (in timer)
Filter-Flo System
Porcelain Enamel Finished Top, Lid, Tub & Basket
\$288.88
PERFORMANCE TESTED COMMERCIAL MODEL DRYER
Standard Capacity
2 Cycles-Regular and Special with Permanent Press Cool-down Period
3 Drying Selections - Normal, Low, No heat fluff
Removable Up-Front Lint Filter
On Indicator Light
Green Dot Quality Tested
Sullivan's Hardware
211 W. Bluff 283-2231

MONDAY 01/01/79
ALL ALONE
Lee Remick finds her sheltered and secure life shattered when her husband leaves her in "Breaking Up," an encore presentation on "The ABC Monday Night Movie," Jan. 1.
Lee Remick stars as a woman fighting to rediscover the personal identity she has lost when her marriage comes to an unexpected end. Granville Van Dusen stars as her husband who seeks freedom in order to discover greater joy in his life.
\$1.99
Sullivan's Hardware
211 W. Bluff 283-2231

- 7:00 A.M. - Today
7:00 A.M. - Local Messages
7:00 A.M. - Weather
7:00 A.M. - CBS Morning News
7:00 A.M. - Lillas, Yoga And You
7:00 A.M. - Good Morning America
7:00 A.M. - News
7:00 A.M. - Tom & Jerry
7:00 A.M. - Speed Racer
7:15 A.M. - News
7:30 A.M. - Sesame Street
7:30 A.M. - Morning Show
7:30 A.M. - Good Morning America
7:30 A.M. - Popeye
8:00 A.M. - Captain Kangaroo
8:00 A.M. - Woody Woodpecker
8:00 A.M. - Banana Split
8:30 A.M. - Greta
8:30 A.M. - A. M. Houston
8:30 A.M. - Leave It to Beaver
9:00 A.M. - Phil Donahue
9:00 A.M. - Card Sharks
9:00 A.M. - All in the Family
9:00 A.M. - Praise the Lord Club

- 9:00 A.M. - Phil Donahue
9:00 A.M. - Card Sharks
9:00 A.M. - All in the Family
9:00 A.M. - Praise the Lord Club
9:00 A.M. - News
9:00 A.M. - Tom & Jerry
9:00 A.M. - Speed Racer
9:15 A.M. - News
9:30 A.M. - Jeopardy
9:30 A.M. - Vegetable Soup
9:30 A.M. - Tournament of Roses Parade
9:30 A.M. - News
9:30 A.M. - Lillas, Yoga And You
9:30 A.M. - Good Morning America
9:30 A.M. - News
9:30 A.M. - Tom & Jerry
9:30 A.M. - Speed Racer
9:45 A.M. - News
10:00 A.M. - High Rollers
10:00 A.M. - Local Messages
10:00 A.M. - Big Blue Marble
10:00 A.M. - Happy Days
10:30 A.M. - News
10:30 A.M. - The Doctors
10:30 A.M. - Guiding Light
10:30 A.M. - Get Smog
10:30 A.M. - Another World
10:30 A.M. - General Hospital
10:30 A.M. - Porky & Friends
10:30 A.M. - Flintstones

- 10:30 A.M. - News
10:30 A.M. - The Doctors
10:30 A.M. - Guiding Light
10:30 A.M. - Get Smog
10:30 A.M. - Another World
10:30 A.M. - General Hospital
10:30 A.M. - Porky & Friends
10:30 A.M. - Flintstones
11:00 A.M. - News
11:00 A.M. - Tom & Jerry
11:00 A.M. - Speed Racer
11:15 A.M. - News
11:30 A.M. - Sesame Street
11:30 A.M. - Morning Show
11:30 A.M. - Good Morning America
11:30 A.M. - Popeye
12:00 P.M. - Captain Kangaroo
12:00 P.M. - Woody Woodpecker
12:00 P.M. - Banana Split
12:30 P.M. - Greta
12:30 P.M. - A. M. Houston
12:30 P.M. - Leave It to Beaver
1:00 P.M. - Phil Donahue
1:00 P.M. - Card Sharks
1:00 P.M. - All in the Family
1:00 P.M. - Praise the Lord Club

- 1:00 P.M. - Phil Donahue
1:00 P.M. - Card Sharks
1:00 P.M. - All in the Family
1:00 P.M. - Praise the Lord Club
1:00 P.M. - News
1:00 P.M. - Tom & Jerry
1:00 P.M. - Speed Racer
1:15 P.M. - News
1:30 P.M. - Jeopardy
1:30 P.M. - Vegetable Soup
1:30 P.M. - Tournament of Roses Parade
1:30 P.M. - News
1:30 P.M. - Lillas, Yoga And You
1:30 P.M. - Good Morning America
1:30 P.M. - News
1:30 P.M. - Tom & Jerry
1:30 P.M. - Speed Racer
1:45 P.M. - News
2:00 A.M. - High Rollers
2:00 A.M. - Local Messages
2:00 A.M. - Big Blue Marble
2:00 A.M. - Happy Days
2:30 A.M. - News
2:30 A.M. - The Doctors
2:30 A.M. - Guiding Light
2:30 A.M. - Get Smog
2:30 A.M. - Another World
2:30 A.M. - General Hospital
2:30 A.M. - Porky & Friends
2:30 A.M. - Flintstones

TUESDAY

- 9:00 A.M. - Today
9:00 A.M. - Local Messages
9:00 A.M. - Weather
9:00 A.M. - CBS Morning News
9:00 A.M. - Lillas, Yoga And You
9:00 A.M. - Good Morning America
9:00 A.M. - News
9:00 A.M. - Tom & Jerry
9:00 A.M. - Speed Racer
9:15 A.M. - News
9:30 A.M. - Sesame Street
9:30 A.M. - Morning Show
9:30 A.M. - Good Morning America
9:30 A.M. - Popeye
10:00 A.M. - Captain Kangaroo
10:00 A.M. - Woody Woodpecker
10:00 A.M. - Banana Split
10:30 A.M. - Greta
10:30 A.M. - A. M. Houston
10:30 A.M. - Leave It to Beaver
11:00 A.M. - Phil Donahue
11:00 A.M. - Card Sharks
11:00 A.M. - All in the Family
11:00 A.M. - Praise the Lord Club

- 11:00 A.M. - Phil Donahue
11:00 A.M. - Card Sharks
11:00 A.M. - All in the Family
11:00 A.M. - Praise the Lord Club
11:00 A.M. - News
11:00 A.M. - Tom & Jerry
11:00 A.M. - Speed Racer
11:15 A.M. - News
11:30 A.M. - Sesame Street
11:30 A.M. - Morning Show
11:30 A.M. - Good Morning America
11:30 A.M. - Popeye
12:00 P.M. - Captain Kangaroo
12:00 P.M. - Woody Woodpecker
12:00 P.M. - Banana Split
12:30 P.M. - Greta
12:30 P.M. - A. M. Houston
12:30 P.M. - Leave It to Beaver
1:00 P.M. - Phil Donahue
1:00 P.M. - Card Sharks
1:00 P.M. - All in the Family
1:00 P.M. - Praise the Lord Club

- 1:00 P.M. - Phil Donahue
1:00 P.M. - Card Sharks
1:00 P.M. - All in the Family
1:00 P.M. - Praise the Lord Club
1:00 P.M. - News
1:00 P.M. - Tom & Jerry
1:00 P.M. - Speed Racer
1:15 A.M. - News
1:30 A.M. - Sesame Street
1:30 A.M. - Morning Show
1:30 A.M. - Good Morning America
1:30 A.M. - Popeye
12:00 P.M. - Captain Kangaroo
12:00 P.M. - Woody Woodpecker
12:00 P.M. - Banana Split
12:30 P.M. - Greta
12:30 P.M. - A. M. Houston
12:30 P.M. - Leave It to Beaver
1:00 P.M. - Phil Donahue
1:00 P.M. - Card Sharks
1:00 P.M. - All in the Family
1:00 P.M. - Praise the Lord Club

- 1:00 P.M. - Phil Donahue
1:00 P.M. - Card Sharks
1:00 P.M. - All in the Family
1:00 P.M. - Praise the Lord Club
1:00 P.M. - News
1:00 P.M. - Tom & Jerry
1:00 P.M. - Speed Racer
1:15 A.M. - News
1:30 A.M. - Sesame Street
1:30 A.M. - Morning Show
1:30 A.M. - Good Morning America
1:30 A.M. - Popeye
12:00 P.M. - Captain Kangaroo
12:00 P.M. - Woody Woodpecker
12:00 P.M. - Banana Split
12:30 P.M. - Greta
12:30 P.M. - A. M. Houston
12:30 P.M. - Leave It to Beaver
1:00 P.M. - Phil Donahue
1:00 P.M. - Card Sharks
1:00 P.M. - All in the Family
1:00 P.M. - Praise the Lord Club

TUESDAY
DR. MEG
Lindsay Wagner stars as a dedicated physician battling alone to bring modern medicine to Appalachia in the 1920s in "The Incredible Journey of Doctor Meg Laurel," to be presented on "The CBS Tuesday Night Movies," Jan. 2.
Jane Wyman also stars in the original drama. Miss Wagner portrays a happily married Boston physician who is compelled by her conscience to return to her roots, a poor orphanage in Virginia, to repay the debt and inspiration given her by the institution's director.
\$1.99
Sullivan's Hardware
211 W. Bluff 283-2231

- 7:00 P.M. - Orange Bowl
7:00 P.M. - News
7:00 P.M. - CBS News
7:00 P.M. - News
7:00 P.M. - News
7:00 P.M. - News
7:00 P.M. - News
7:00 P.M. - News
7:00 P.M. - News
7:00 P.M. - News

- 7:00 A.M. - Today
7:00 A.M. - Local Messages
7:00 A.M. - Weather
7:00 A.M. - CBS Morning News
7:00 A.M. - Lillas, Yoga And You
7:00 A.M. - Good Morning America
7:00 A.M. - News
7:00 A.M. - Tom & Jerry
7:00 A.M. - Speed Racer
7:15 A.M. - News
7:30 A.M. - Sesame Street
7:30 A.M. - Morning Show
7:30 A.M. - Good Morning America
7:30 A.M. - Popeye
8:00 A.M. - Captain Kangaroo
8:00 A.M. - Woody Woodpecker
8:00 A.M. - Banana Split
8:30 A.M. - Greta
8:30 A.M. - A. M. Houston
8:30 A.M. - Leave It to Beaver
9:00 A.M. - Phil Donahue
9:00 A.M. - Card Sharks
9:00 A.M. - All in the Family
9:00 A.M. - Praise the Lord Club

- 9:00 A.M. - Phil Donahue
9:00 A.M. - Card Sharks
9:00 A.M. - All in the Family
9:00 A.M. - Praise the Lord Club
9:00 A.M. - News
9:00 A.M. - Tom & Jerry
9:00 A.M. - Speed Racer
9:15 A.M. - News
9:30 A.M. - Jeopardy
9:30 A.M. - Vegetable Soup
9:30 A.M. - Tournament of Roses Parade
9:30 A.M. - News
9:30 A.M. - Lillas, Yoga And You
9:30 A.M. - Good Morning America
9:30 A.M. - News
9:30 A.M. - Tom & Jerry
9:30 A.M. - Speed Racer
9:45 A.M. - News
10:00 A.M. - High Rollers
10:00 A.M. - Local Messages
10:00 A.M. - Big Blue Marble
10:00 A.M. - Happy Days
10:30 A.M. - News
10:30 A.M. - The Doctors
10:30 A.M. - Guiding Light
10:30 A.M. - Get Smog
10:30 A.M. - Another World
10:30 A.M. - General Hospital
10:30 A.M. - Porky & Friends
10:30 A.M. - Flintstones

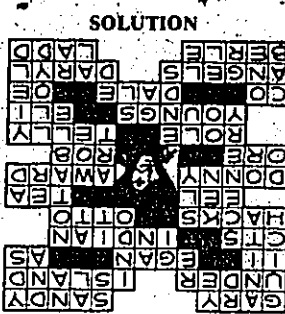
Woodland Galleries
ROUTE 1 BOX 3-A WOODVILLE, TEXAS 75799
On exhibit and For Sale... Original Oil Paintings by Virginia Blackmon of Zavalla. Wildlife and Area Landscapes.
PERFECTO CLEANERS
Laundry Dry-Cleaning Alterations
Open 8 1/2 Mon.-Fri. 8-12 Saturday
Owners: George & Linda Watford
305 W. Bluff 283-2518

Tele-Puzzle

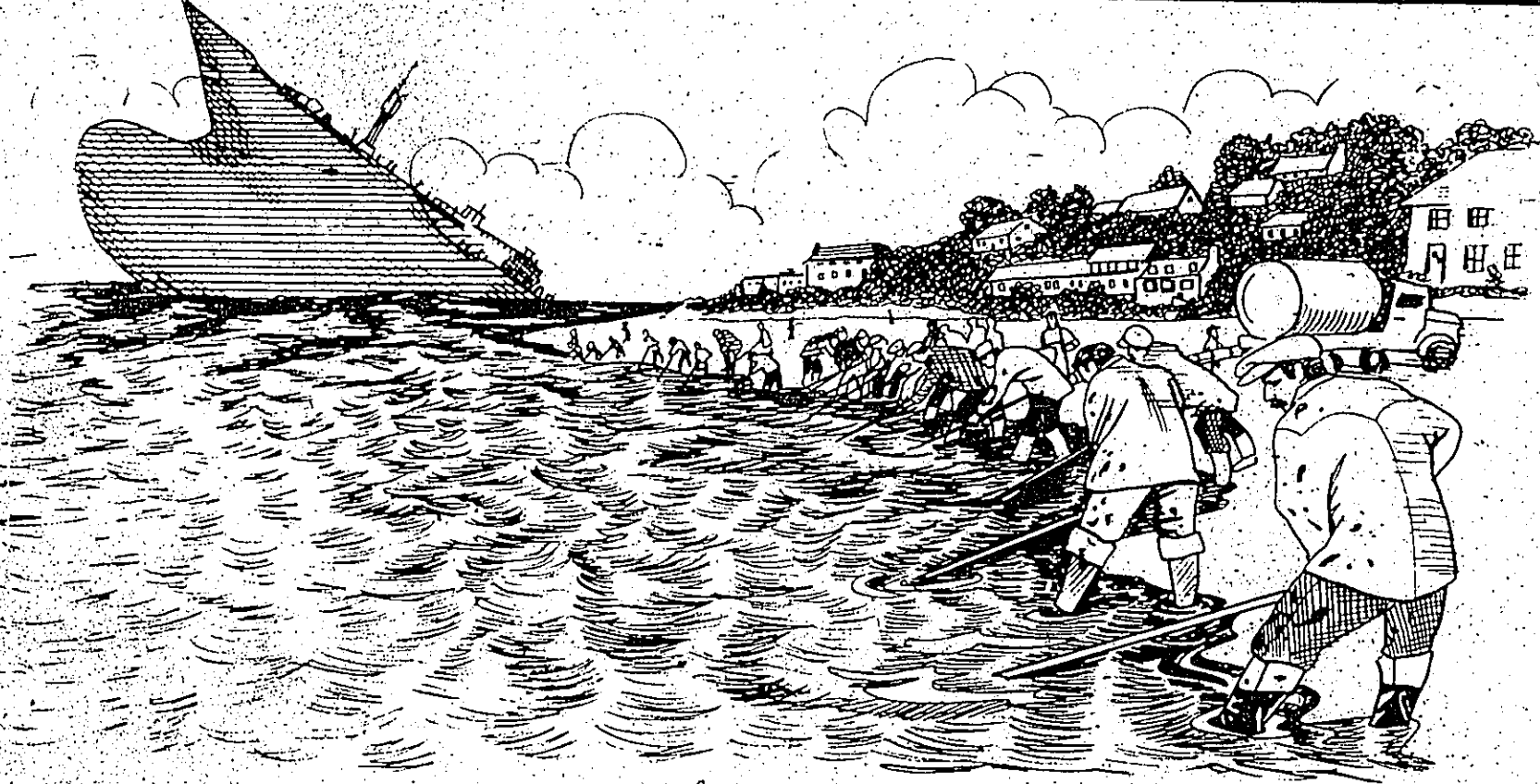


- ACROSS**
- 1. S. Pictured, plays WKRP's program director
 - 10. Below
 - 12. Fantasy
 - 13. Roman numeral
 - 14. A Richard's last name
 - 17. — the World Turns
 - 18. U.S. coins tab.
 - 20. An Ocean
 - 24. Chops
 - 27. Preminger
 - 28. Flongated fish
 - 29. Brew for Frost
 - 32. Marie's brother

- DOWN**
- 1. Carter County's
 - 2. Keweenaw
 - 3. Dawson's initials
 - 4. Biblical pronoun
 - 5. Miss Struthers' monogram
 - 6. Trumpeter Hurt
 - 7. Comment
 - 8. Kind of molecule
 - 9. Length messages tab.
 - 11. Mixed nuts
 - 12. Pertaining to Hindu tomb form



- SOLUTION**
- 34. TV Emmy — Unlaminated metal
 - 36. The younger Reiner
 - 38. TV actor's part
 - 42. — Savalas
 - 45. Loretta and Robert
 - 48. Wallace's first name
 - 49. Together (pref.)
 - 51. — Evans
 - 53. Old English tab.
 - 54. Charles's charges
 - 58. Alias Animal, — Anderson
 - 61. Uncle Milton
 - 62. Cheryl or Diane



When the Amoco Cadiz ran aground off Brittany, the French army and civilians worked together to clean oil off the beach. "Nova" investigates oil spills in "Black Tide," Thursday, Jan. 4, on PBS.

Business and Trade Directory

Gulf States Underwriters of Louisiana, Incorporated
A.P. McDaniel
 Specialist in Wood Business
 We Specialize In On the Job Accident Insurance
 Featuring:
 Excess Insurance Through LLOYDS OF LONDON
 24 hour a day coverage for the owners.
 We also offer LIFE, HEALTH and CANCER INSURANCE
 P.O. BOX 385 WOODVILLE, TEXAS 75079 PHONE (713) 283-3143

SERVICE NEEDS?
 We service any make or model
Refrigerator, Freezer, A/C, Stove, Washer, Dryer and Dishwasher!
ROSE TRADING POST
 Hwy. 190 Dam B 283-5635

A & H Plumbing & Elec. Supplies
 New Construction & Remodeling
 Contract Work
 Back Hoe Work-Septic Tanks
 Drain Fields-Plumbing Repair
 106 W. Holly Herbert Ave. 283-5105 283-7645

A Fairy Tale Come True

Lynda Carter's Career Does Wonders

By DAN LEWIS

HOLLYWOOD — "I don't know a person in the world who could want more than I have," Lynda Carter says seriously. "It's like a fairy tale."

Miss Carter is the statuesque beauty who is television's "Wonder Woman," on CBS each Friday night. She went from beauty queen (Miss World-U.S.A. 1973) to a beauty of the airwaves in a half-dozen years. Her talents go beyond the physical prowess she demonstrates in her series.

Her success includes a singing career, a music-writing career, a flock of movie offers, a television special.

She is semi-bewildered that she turned down a \$250,000 offer to play two weeks at the MGM Grand Hotel in Las Vegas in January, "because it would have messed up my Christmas holidays. I would have had to prepare to act during the holidays."

She has a husband (her manager, Ron Samuels), and, for the first time in her life, her own home.

"Before, I lived in apartments — not shabby, tiny apartments, but roomy, furnished places. I owned a stereo set, four toothbrushes, a TV set and a guitar. Then I married Ron, and we bought a home. Before, material things didn't mean anything to me. Now they mean so much."

Although she insists she has no resentment over these commitments that preclude her from doing normal things, it is, she confides, frustrating.

"I would like to play wife and go shopping with the girls. I never was a wife before last May (when she and Samuels were married) or had a home to care about," she observes ruefully. "But I can't go anywhere without a bodyguard. It's scary. I can't go into a grocery store without being surrounded."

Fame wasn't always the problem. For the first two years after arriving in Hollywood with the title of Miss U.S.A., she couldn't get a job.



Lynda Carter is more than "Wonder Woman," she's also a talented singer/dancer.

case, the popularity and the work schedule that created it, have restricted her life.

"A television series ties you down," is her first lament. "I would love to raise a family," she says plaintively, "and I would love to travel, but you can't do either when you have a weekly series."

Although she insists she has no resentment over these commitments that preclude her from doing normal things, it is, she confides, frustrating.

"I would like to play wife and go shopping with the girls. I never was a wife before last May (when she and Samuels were married) or had a home to care about," she observes ruefully. "But I can't go anywhere without a bodyguard. It's scary. I can't go into a grocery store without being surrounded."

Fame wasn't always the problem. For the first two years after arriving in Hollywood with the title of Miss U.S.A., she couldn't get a job.

"It was always told I was either too pretty, or too tall, or didn't look old enough (she has a beautiful baby face)."

Oddly, her original show-business pursuit was in music, which remains her first love. She sings very well, dances and writes music. In an extraordinarily bold venture, she made her nightclub debut as the headliner at Caesars Palace in Las Vegas for two weeks last summer.

Startled reviewers went to their typewriters and produced such praise as: "Carter's Vegas debut was outstanding, particularly considering she is not a veteran headliner (Los Angeles Times)."

From Variety, the Bible of the entertainment industry: "Lynda Carter can just about write her own ticket with this expertly produced and paced review..."

Say what you will about her portrayal of "Wonder Woman," she's most deeply touched when one talks and writes about her music.

life, ever since I was a kid growing up in Phoenix," she recalls.

So, she is especially thrilled at the prospect of a television special, which would feature her singing, dancing and comedy.

"Hollywood didn't believe I had musical talents, nor did they expect me to do so well in Las Vegas. They expected a bomb," she says with a lovely sneer. "They didn't know I spent 10 years singing and recording."

Doing the television series means she has had to reject a number of tempting movie offers. "I'm not concerned. They'll still be there when I'm ready and available," she says contentedly.

There was the opportunity to abandon the series last year. Lynda claims there had been a strong breach of the contract by the producer, which gave her a strong bargaining position.

"If you know my husband (Samuels also manages Lindsay Wagner and Jaclyn Smith), you know we got a new, good deal," she reveals.

Lynda isn't worried about creating a single image that might prevent her from diversifying the roles she is offered in the future. For one thing, her success in music helps break the typecasting. Nor does she regard herself as a sex symbol, despite record poster sales.

"I never walk in front of a camera trying to be sexy," she declares. "And I don't take myself too seriously, either, in this business. I like good fun, a young mind and a sense of humor."

The lunch break was about over, and a production assistant poked his head into the trailer to notify Lynda she was expected momentarily in front of the hangar.

As we exited the trailer, I pointed to a number of car stickers glued to the walls, both inside and outside, which read: "Christ Is The Answer." Lynda nodded, and reflected: "I'm not religious. I love the Lord."

TV Dial -ogue

ROGER ON ROGERS — You recently answered a question about Roy Rogers that was not all true. Roy married Arlene Wilkins June 14, 1936. In 1941 they adopted Cheryl Darlene. Roy and Arlene's first natural child, Linda Low, was born in 1943. Arlene gave birth to Roy Jr. in 1946 and died eight days later of an embolism. So you were in error when you said they had five children. When Roy and Dale were married in 1947, she already had a son, Tom, by her first marriage. Robin was born to Dale in 1950, but died two years later. They adopted both Sandy and Doodle in 1952. Marion, at age 11, became their ward, but they never adopted her. They adopted Debbie in 1955, and she later died in a church bus accident. My information comes from books written by Dale Evans Rogers—Gwen Pitts, Rogers, Ark. Thank you for setting the record straight.

SWEET SOUNDS — In the TV movie "Cotton Candy," did the actors play their own instruments or did they just act it out? — George Taylor, Hookerton, N.C.

All the actors who played members of the band Cotton Candy (Charlie Martin Smith, Leslie King, Dino Scofield, Manuel Padilla and Kevin Ley Miller) played their own instruments. Smith also played his own bass in the movie, "The Buddy Holly Story."

WHEELER DEALER — Who played the lead singer of Rapid Fire in the Ron Howard movie "Cotton Candy"? Where can I write to him? — Jane Morita, Long Beach, Ms.

Mark Wheeler was the dastardly Torbin Bequette who sang "I Shot the Sheriff" ad infinitum. Wheeler is married and lives in San Francisco, but I'm afraid printing home addresses is forbidden. If the pilot of "Cotton Candy" sells and the amount of mail I've received in it is encouraging, Wheeler will be included in the cast and might be reached at NBC. You'll just have to sit tight until then. P.S. He also did his own singing and guitar playing.

BLACK AND BROWN — Are Karen Black and Gall Brown of "Another World" related? — Mrs. Eunice Bodine, Coudersport, Pa.

Both colors and acting run in their family. The two are sisters and were born Ziegler.

(Send your letters to TV Dial-ogue, Pepper O'Brien, NEA, 200 Park Ave., New York, N.Y. 10017. Sorry but we cannot answer by mail or telephone.)

TV Star Scene

By RUTH THOMPSON

least his face was visible. Dave, in case you haven't already made the connection, is the perpetually-masked Darth Vader of "Star Wars."

His big worry is timing. He means that even if the writers bring back the frogman, the producers might hire another 6-foot-7-inch athlete and hide HIS

face behind the goggles, etc., if Dave has already started location work on "Star Wars II."

Remember the Louds whose all-American family unit fell apart as PBS cameras documented their lifestyle? Well, at last, one happy note. Son Grant Loud debuted as a singer a couple of weeks ago at Reno Sweeney's supper club and made a hit with the critics as well as the patrons.

9:00 A.M.
 Phil Donahue Special guests, sameday twin sisters, the world's largest twins, a seven-foot tall woman, and a dwarf discuss why they do not think of themselves as freaks, their work, and how they relate to others.
 Phil Donahue A lesbian couple from Seattle discuss their victory in the Washington State Supreme Court which has allowed them to regain custody of their six children who live with them.
 MOVIE: 'Destiny' A young deputy becomes laughing stock when he refuses to carry gun. Audie Murphy, Mar. 1944. 1955.

10:30 A.M.
 MOVIE: 'Bolero' The drama of a young man and his ambition to become a great dancer. George Raft, Carol Lombard, William Frawley, Ray Milland. 1935.

11:00 A.M.
 Phil Donahue Special guests, sameday twin sisters, the world's largest twins, a seven-foot tall woman, and a dwarf discuss why they do not think of themselves as freaks, their work, and how they relate to others.
 Phil Donahue A lesbian couple from Seattle discuss their victory in the Washington State Supreme Court which has allowed them to regain custody of their six children who live with them.
 MOVIE: 'Destiny' A young deputy becomes laughing stock when he refuses to carry gun. Audie Murphy, Mar. 1944. 1955.

NOTICE!!
 WE DO CERAMIC TILE WORK!! NOW Is The Time To Remodel Point!
 Add A Room. Remodel Your Kitchen, Bath Etc. We Do Custom Cabinets. HENSARLINGS REMODELING & SPECIALTY
 CO 283-5666
 LOCATED 700N. MAGNOLIA WOODVILLE, TX

Come to Grimes Service Center or Jackson's T.B.A. Store for all your tires, batteries and custom wheels.
 Gulf
 112 S. Magnolia Woodville

We Have Somethin' Special For You
 NO service charges, when your checking balance stays above \$200.00.
 LOW service charges, when your checking balance drops below \$200.00. \$1.00 plus 5¢ per check/per month.
 COMPARE these charges with your present Bank. If we can save you some money, come by and open your account. We are only 5 miles north of Woodville or 15¢ by mail.
First State Bank of Colmesneil
 837-2212, P.O. Box 188 Colmesneil
 FDIC
 P.S. We will be expecting you.

3:00 P.M.
 Dineah! Jack Klugman, Susan Sullivan, Jim Stafford, Carl Sagan and Jay Yarnal visit Dineah, where the show is aired for 90 minutes. Pamela Sue Martin will be included. (R)
 MOVIE: 'Attack on Terror' Part 1

5:00 P.M.
 Local Messages
 Weather
 Over Easy
 CBS News
 Newlywed Game
 Brady Bunch
 6:15 P.M.
 News

7:00 P.M.
 Tony Orlando's First Special taped on location at a Lake Tahoe, Nev. nightclub where he was appearing. (60 min.)
 Jeffersons Louise has a surprise visit from her long-lost sister.
 The Cousteau Search for Atlantis Cousteau blend myth with documentary in an attempt to solve the mystery of the Titanic. (60 min.)
 MOVIE: 'Eve' An American pilot, downed in the Amazon, is saved from Amazonian savages by their white jungle goddess. Celeste Yarnall, Robert Walker Jr., Fred Clark. 1958
 Eight is Enough Nicholas falls in love with his fourth grade teacher. Guest starring Sherry Fabares, Don Porter, Ed Nelson and Tiff.

8:30 P.M.
 That's Hollywood
 Children of 3rd World
 Bewitched
 MacNeil-Lehrer Rept.
 Family Feud
 F.M. Magazine
 Andy Griffith
 Name That Tune
 Carol Burnett and Friends
 Love Lucy

8:00 P.M.
 MOVIE: 'Pleasure Cove' A charming rogue visits a posh island resort which is the scene of wacky romantic entanglements. Tom Jones, Constance Forslund, Joan Hackett. 1977
 Weather
 MOVIE: 'Some Kind of Miracle' Two young people about to be married undergo a test of their love when he is paralyzed in a surfing accident. David Dukes, Andrea Marcovicci. 1978
 Mourning Becomes Electra Conclusion. Suicide and murder have taken their toll on the once proud Mannion family. (60 min.)
 Charlie's Angels The angels penetrate an exclusive health spa to investigate the murder of a famous Broadway actress. Guest starring Mercedes McCambridge. (R) (60 min.)
 MOVIE: 'Jessica' The drama of a small Italian village. Relics of beautiful widowed mid-wife, plot to ruin her. Ange Dickinson, Maurice Chevalier. 1929

8:15 P.M.
 Tomorrow
 News
 Local Messages

9:00 A.M.
 Phil Donahue Special guests, sameday twin sisters, the world's largest twins, a seven-foot tall woman, and a dwarf discuss why they do not think of themselves as freaks, their work, and how they relate to others.
 Phil Donahue A lesbian couple from Seattle discuss their victory in the Washington State Supreme Court which has allowed them to regain custody of their six children who live with them.
 MOVIE: 'Destiny' A young deputy becomes laughing stock when he refuses to carry gun. Audie Murphy, Mar. 1944. 1955.

10:30 A.M.
 MOVIE: 'Bolero' The drama of a young man and his ambition to become a great dancer. George Raft, Carol Lombard, William Frawley, Ray Milland. 1935.

11:00 A.M.
 Phil Donahue Special guests, sameday twin sisters, the world's largest twins, a seven-foot tall woman, and a dwarf discuss why they do not think of themselves as freaks, their work, and how they relate to others.
 Phil Donahue A lesbian couple from Seattle discuss their victory in the Washington State Supreme Court which has allowed them to regain custody of their six children who live with them.
 MOVIE: 'Destiny' A young deputy becomes laughing stock when he refuses to carry gun. Audie Murphy, Mar. 1944. 1955.

11:30 P.M.
 Kojak Kojak discovers a connection between a bank and a car theft ring. Guest starring David Ogden Stiers. (R) (60 min.)
 Captioned ABC News
 S.W.A.T. First of 2 parts. The S.W.A.T. team goes undercover to catch a gang of scuba diving jewel thieves. Guest starring Sal Mineo, Phil Silvers, and Susan Day. (R) (60 min.)
 Police Woman
 Dick Cavett: Today's guest is actress and writer Lili Palmer.
 Gong Show
 Dick Van Dyke
 10:15 P.M.
 News
 10:30 P.M.
 Tonight Show
 Tonight Show guests include Jim Fowler. (90 min.)
 Local Messages

WEDNESDAY

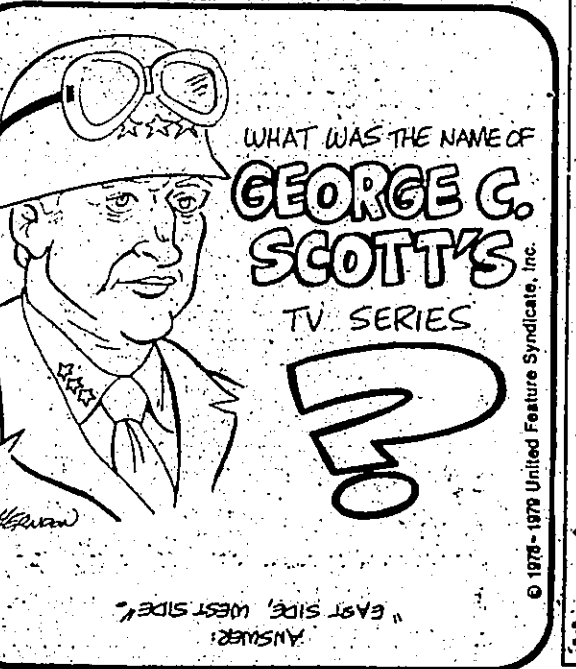
PUPPY LOVE

Falling head over heels in puppy love with his fourth-grade teacher, Nicholas is caught up in a disagreement with his family over the value of affection. Andrea Howard guest-stars in "Milk and Sympathy," the Wednesday, Jan. 3 episode of "Eight is Enough," on ABC. Adam Rich stars as Nicholas Bradford. As the Nicholas member of the Bradford clan, Nicholas gets more than his share of attention from his two brothers and five sisters. (Stations reserve the right to make last-minute changes)



Special This Week!
 Buy A 25" Color Console This Week And I'll Give You a FREE ANTENNA
 The Furniture Center
 107 E. Bluff 283-2895

IDIVIA TEASERS
 WHAT WAS THE NAME OF GEORGE C. SCOTT'S TV SERIES?
 ANSWER: EAST SIDE WEST SIDE



9:00 A.M.
 Phil Donahue Special guests, sameday twin sisters, the world's largest twins, a seven-foot tall woman, and a dwarf discuss why they do not think of themselves as freaks, their work, and how they relate to others.
 Phil Donahue A lesbian couple from Seattle discuss their victory in the Washington State Supreme Court which has allowed them to regain custody of their six children who live with them.
 MOVIE: 'Destiny' A young deputy becomes laughing stock when he refuses to carry gun. Audie Murphy, Mar. 1944. 1955.

10:30 A.M.
 MOVIE: 'Bolero' The drama of a young man and his ambition to become a great dancer. George Raft, Carol Lombard, William Frawley, Ray Milland. 1935.

11:00 A.M.
 Phil Donahue Special guests, sameday twin sisters, the world's largest twins, a seven-foot tall woman, and a dwarf discuss why they do not think of themselves as freaks, their work, and how they relate to others.
 Phil Donahue A lesbian couple from Seattle discuss their victory in the Washington State Supreme Court which has allowed them to regain custody of their six children who live with them.
 MOVIE: 'Destiny' A young deputy becomes laughing stock when he refuses to carry gun. Audie Murphy, Mar. 1944. 1955.

11:30 P.M.
 Kojak Kojak discovers a connection between a bank and a car theft ring. Guest starring David Ogden Stiers. (R) (60 min.)
 Captioned ABC News
 S.W.A.T. First of 2 parts. The S.W.A.T. team goes undercover to catch a gang of scuba diving jewel thieves. Guest starring Sal Mineo, Phil Silvers, and Susan Day. (R) (60 min.)
 Police Woman
 Dick Cavett: Today's guest is actress and writer Lili Palmer.
 Gong Show
 Dick Van Dyke
 10:15 P.M.
 News
 10:30 P.M.
 Tonight Show
 Tonight Show guests include Jim Fowler. (90 min.)
 Local Messages

9:00 A.M.
 Phil Donahue Special guests, sameday twin sisters, the world's largest twins, a seven-foot tall woman, and a dwarf discuss why they do not think of themselves as freaks, their work, and how they relate to others.
 Phil Donahue A lesbian couple from Seattle discuss their victory in the Washington State Supreme Court which has allowed them to regain custody of their six children who live with them.
 MOVIE: 'Destiny' A young deputy becomes laughing stock when he refuses to carry gun. Audie Murphy, Mar. 1944. 1955.

10:30 A.M.
 MOVIE: 'Bolero' The drama of a young man and his ambition to become a great dancer. George Raft, Carol Lombard, William Frawley, Ray Milland. 1935.

11:00 A.M.
 Phil Donahue Special guests, sameday twin sisters, the world's largest twins, a seven-foot tall woman, and a dwarf discuss why they do not think of themselves as freaks, their work, and how they relate to others.
 Phil Donahue A lesbian couple from Seattle discuss their victory in the Washington State Supreme Court which has allowed them to regain custody of their six children who live with them.
 MOVIE: 'Destiny' A young deputy becomes laughing stock when he refuses to carry gun. Audie Murphy, Mar. 1944. 1955.

11:30 P.M.
 Kojak Kojak discovers a connection between a bank and a car theft ring. Guest starring David Ogden Stiers. (R) (60 min.)
 Captioned ABC News
 S.W.A.T. First of 2 parts. The S.W.A.T. team goes undercover to catch a gang of scuba diving jewel thieves. Guest starring Sal Mineo, Phil Silvers, and Susan Day. (R) (60 min.)
 Police Woman
 Dick Cavett: Today's guest is actress and writer Lili Palmer.
 Gong Show
 Dick Van Dyke
 10:15 P.M.
 News
 10:30 P.M.
 Tonight Show
 Tonight Show guests include Jim Fowler. (90 min.)
 Local Messages

CLEAN-UP! PAINT-UP! FIX-UP!
 Take Advantage of this week's Special BOYKIN LUMBER SUPPLY
 BOYKIN LUMBER & SUPPLY
 Located, Smt. Hwy. 283-3731

FREE ESTIMATE!
 BLOWN ATTIC INSULATION
 Save on This Winter's Heating Bill. Call Us For An INSULATION INSTALLATION ESTIMATE
 Cellulose Means Complete ZERO Combustible!
 AIR CONDITIONING & HEATING
 100 E. BLUFF 83-3666

12:15 A.M.
 News

12:30 A.M.
 Sign Off
 News

1:00 A.M.
 MOVIE: 'It's in the Bag' The owner of a flea circus tries to outsmart a couple of schemers who are trying to do him out of a big legacy. Fred Allen, William Bendix, Jack.

4:15 A.M.
 MOVIE: 'Hell's Harbor' A rich south seas businessman buys the hand of a fiery native girl. Jean Hersholt, Lupo Veloz. 1934

11:30 P.M.
 Captioned ABC News
 S.W.A.T. Conclusion. The S.W.A.T. team goes undercover to catch a gang of scuba diving jewel thieves. Guest starring Sal Mineo, Phil Silvers, and Susan Day. (R) (60 min.)
 Starsky and Hutch Starsky and Hutch close in on a gang leader and his narcotics, prostitution and bookmaking rackets. Guest starring Art Metrano and Lisa Mordente. (R) (60 min.)
 Bonanza
 Love Experts
 7:00 Club
 11:00 P.M.
 MOVIE: 'McCloud' The Gang That Stole Manhattan A multi-million-dollar jewelry heist takes place during a filming of a motion picture. Dennis Weaver, Fernando Lamas, Leslie Parrish. 1974
 El Hijo de Angela Maria
 11:30 P.M.
 Captioned ABC News
 S.W.A.T. Conclusion. The S.W.A.T. team goes undercover to catch a gang of scuba diving jewel thieves. Guest starring Sal Mineo, Phil Silvers, and Susan Day. (R) (60 min.)
 Starsky and Hutch Starsky and Hutch close in on a gang leader and his narcotics, prostitution and bookmaking rackets. Guest starring Art Metrano and Lisa Mordente. (R) (60 min.)
 Here to Make Music: Pinchas Zukerman Filmed over a period of years, this program follows Zukerman's career from the age of nine to his New York debut at Hunter College in 1971. (60 min.)
 MOVIE: 'Gunfighters' A cowboy who hangs up his guns runs into a ruthless gang of cattle rustlers. Randolph Scott, Barbara Britton, Dorothy Hart. 1947
 8:15 P.M.
 News
 8:30 P.M.
 Soap
 9:00 P.M.
 David Cassidy Man Undercover Shay becomes a tough talking weapons buyer to nab a deadly arms dealer. Guest starring James Whitmore Jr. (60 min.)
 Local Messages
 Barney Miller
 Sneak Preview
 Family Doug covers for a married friend in the throes of a love affair with a young woman. Guest starring Whitney Blake and Donald Moffat. (R) (60 min.)
 Mary Griffin Today's guests are Susan Amter, Jack Carter and Vincent Van Patton. Where the show is aired for 90 minutes. Soupy Sales and Anne Dittenber will be included.
 9:30 P.M.
 Alton Ochsner at 80 One of the first doctors in the country to connect smoking and cancer is profiled.
 10:00 P.M.
 News
 Weather
 Dick Cavett Today's guests include Lili Palmer and her husband Carlos Thompson, actor and writer.


1970 welcome

Inventory Clearance
 Shop and Save on
 La Z Boy Rocker Recliners
 All Living Room Suites
 and Bedroom Suites
McClure Furniture
 305 N. Magnolia 283-2519

THURSDAY

GRIM WITNESS

Quincy (Jack Klugman) expresses the grimness of his situation - his testimony and forensic evidence during a coroner's inquest must prove without a doubt that he was not responsible for the wrongful death of a motorcycle accident victim - in "A Question of Death," a hard-hitting "Quincy" drama dealing with organ transplants, on NBC-TV, Thursday, Jan. 4.
 Hearing officer (Don Keeler) listens to the testimony. The wizard of the Los Angeles Coroner's office defends his profession in this courtroom drama.
 Stations reserve the right to make last-minute changes



- 9:00 A.M.
- 1 - Phil Donahue Donahue continues its discussion of college admission policies with representatives of Harvard and Northwestern Universities, and the College Entrance Examination Board Part Two
 - 2 - Phil Donahue Today's show features several people who have given up their secure and well paid jobs for off beat and simpler life styles
 - 3 - MOVIE: "Captain Lightfoot" Rebel leader and second in command secretly use every means they can to battle against English during Irish Rebellion of last century. Rock Hudson, Barbara Rush, Jeff Morrow, Kathleen Ryan 1955
- 10:30 A.M.
- 1 - MOVIE: "China" A truck driver, turned proliet, comes to the aid of the Chinese. Loretta Young, Alan Ladd, William Bendix 1943
 - 2 - "Dinah" Peter Graves, Freddy Fender, Nick Gilder, Dr. Wayne Dyer and Phil Villavest Dinah Where the show is aired for 80 minutes, Jay Johnson will be included
 - 3 - MOVIE: "Alvin Karpis, Public Enemy No. 1"
- 3:00 P.M.
- 1 - "Dinah" Peter Graves, Freddy Fender, Nick Gilder, Dr. Wayne Dyer and Phil Villavest Dinah Where the show is aired for 80 minutes, Jay Johnson will be included
 - 2 - MOVIE: "Alvin Karpis, Public Enemy No. 1"
- 6:00 P.M.
- 1 - Local Messages
 - 2 - Weather
 - 3 - Over Easy
 - 4 - CBS News
 - 5 - Newlywed Game
 - 6 - Brady Bunch
- 6:15 P.M.
- 1 - News
 - 2 - Muppets
 - 3 - Newlywed Game
 - 4 - Bewitched
 - 5 - MacNeil-Lehrer Rep.
 - 6 - Gong Show
 - 7 - P.M. Magazine
 - 8 - Andy Griffith
 - 9 - Carol Burnett
 - 10 - Love Lucy
- 7:00 P.M.
- 1 - "Diffrent Strokes" Arnold has to make a tough choice as to whom to marry, as shown in episode
 - 2 - "Happy Birthday, Charlie Brown" Charles M. Schulz and Phyllis George host the celebration, in two action and animation, of the start of the 30th year of the adventure of the Peanuts clan. (60 min)
 - 3 - "Wash. Week in Review" Marie Gustis tonight are Cheryl Tiegs, Harvey Korman and Buddy Hackett. (60 min)
 - 4 - "MOVIE: 'The War Lord'" A knight establishes a fiefdom on the shores of the North Sea in the 11th Century. Charlton Heston, Richard Boone, Rosemary Forsyth 1965
 - 5 - News
 - 6 - Edie Capra Presents "The mysterious disappearance of an important trial witness takes Capra through a series of dead-end clues. (60 min.)"
 - 7 - "Firing Line" Mary Griffin Today's guests are Orson Bean, Barbara Carrera and Leo Kottke. Where the show is aired for 90 minutes. Thomas Hoving and Gloria Loring will be included.
 - 8 - "Gunslinger" Joe and Valerie Nov and Valerie break the joy to their parents that they intend to live together.
 - 9 - "Wall Street Week"
 - 10 - "Rockford Files" Rockford suspects foul play after a model's death is written.

Shop at Lollypop
for your New Year's Fashions
10 a.m. - 6 p.m. Mon. - Fri.
9 a.m. - 5 p.m. Saturday
Lollypop Boutique
283-2741 1304 W. Bluff

Cub Cadet: the people's choice

Now's the time to buy an international Cub Cadet... the preferred lawn and garden tractor. With features like a "Maintenance Minder" to tell when periodic service is needed. With automotive-type frame and transmission for extra long life. 5 models, 10 to 16 hp, and dozens of work attachments for year around use. Compare and see that today's quality buy is Cub Cadet.



Cub Cadet Lawn and Garden Tractors start as low as \$2150⁰⁰ FOR PROFESSIONAL RESULTS. TRUST A GRASSHOPPER BRAND.

A & M MOTOR CO., INC.
605 S. Magnolia 283-2534

FRIDAY 01/05/79

- 9:00 A.M.
- 1 - News
 - 2 - Muppets
 - 3 - Newlywed Game
 - 4 - Bewitched
 - 5 - MacNeil-Lehrer Rep.
 - 6 - Gong Show
 - 7 - P.M. Magazine
 - 8 - Andy Griffith
 - 9 - Carol Burnett
 - 10 - Love Lucy
- 7:00 P.M.
- 1 - "Diffrent Strokes" Arnold has to make a tough choice as to whom to marry, as shown in episode
 - 2 - "Happy Birthday, Charlie Brown" Charles M. Schulz and Phyllis George host the celebration, in two action and animation, of the start of the 30th year of the adventure of the Peanuts clan. (60 min)
 - 3 - "Wash. Week in Review" Marie Gustis tonight are Cheryl Tiegs, Harvey Korman and Buddy Hackett. (60 min)
 - 4 - "MOVIE: 'The War Lord'" A knight establishes a fiefdom on the shores of the North Sea in the 11th Century. Charlton Heston, Richard Boone, Rosemary Forsyth 1965
 - 5 - News
 - 6 - Edie Capra Presents "The mysterious disappearance of an important trial witness takes Capra through a series of dead-end clues. (60 min.)"
 - 7 - "Firing Line" Mary Griffin Today's guests are Orson Bean, Barbara Carrera and Leo Kottke. Where the show is aired for 90 minutes. Thomas Hoving and Gloria Loring will be included.
 - 8 - "Gunslinger" Joe and Valerie Nov and Valerie break the joy to their parents that they intend to live together.
 - 9 - "Wall Street Week"
 - 10 - "Rockford Files" Rockford suspects foul play after a model's death is written.

Shop at Lollypop
for your New Year's Fashions
10 a.m. - 6 p.m. Mon. - Fri.
9 a.m. - 5 p.m. Saturday
Lollypop Boutique
283-2741 1304 W. Bluff

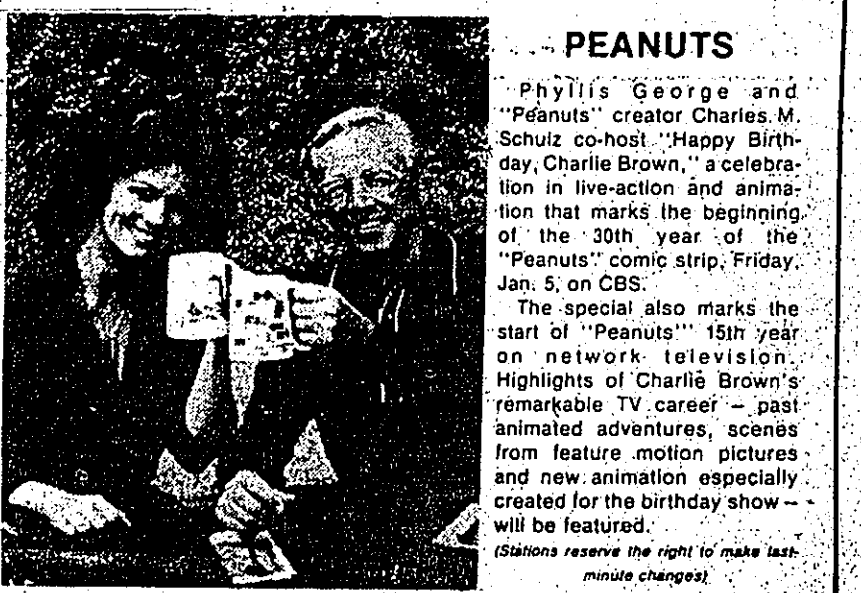
THE Chester STATE BANK

COMPLETE BANKING
DRIVE IN WINDOW FACILITIES
NIGHT DEPOSITORY
SAFETY DEPOSIT BOXES

Call 969-2231

FDIC

DAUGHTER-MOTHER
Charlene Tilton (left), as Lucy, confronts her mother, Val (Joan Van Ark), upon learning that her long-lost father, Gary, is returning in the second of a two-part episode of "Dallas" to be rebroadcast Sunday, Dec. 31 on CBS.



PEANUTS
Phyllis George and "Peanuts" creator Charles M. Schulz co-host "Happy Birthday, Charlie Brown," a celebration in live-action and animation that marks the beginning of the 30th year of the "Peanuts" comic strip, Friday, Jan. 5, on CBS. The special also marks the start of "Peanuts" 15th year on network television. Highlights of Charlie Brown's remarkable TV career - past animated adventures, scenes from feature motion pictures and new animation especially created for the birthday show - will be featured. (Stations reserve the right to make last-minute changes.)

FRIDAY 01/05/79

- 7:00 A.M.
- 1 - Galaxy Good-Byes
 - 2 - Local Messages
 - 3 - Weather
 - 4 - All-New Popeye Hour
 - 5 - Wash. Week in Review
 - 6 - Scooby's All-Stars
 - 7 - For You Black Woman
 - 8 - No Program
 - 9 - News
 - 10 - Fantasic Four
 - 11 - Well Street Week
 - 12 - Woody Woodpecker
 - 1 - A Better Way
- 8:00 A.M.
- 1 - Godzillia Super 80
 - 2 - Bugs, Bunny/ Road Runner Show
 - 3 - Sesame Street
 - 4 - Bowery Boys
 - 5 - The Real People
 - 6 - 8:30 A.M.
 - 7 - Challenge of the Superfriends
 - 8 - Fact
 - 9 - 9:00 A.M.
 - 10 - Weather
 - 11 - Electric Company
 - 12 - MOVIE: "Night Riders" Highlights of a gambler who is posing as the disconsolate of a well-known Spanish Don. John Wayne, Doreen McKay, Ray Corrigan 1939
 - 1 - Mario's Magic Movie Machine
 - 2 - News
 - 3 - 9:30 A.M.
 - 4 - Daffy Duck
 - 5 - Tarzan and the Super Seven
 - 6 - Studio 54
 - 7 - MOVIE: "Charge of the Light Brigade" Fictionalized tale of most amazing real war adventures ever told. Olivia de Havilland, David Niven, Nigel Bruce 1936
 - 8 - 10:00 A.M.
 - 9 - Yog's Space Race
 - 10 - Local Messages
 - 11 - Consumer Survival Kit
 - 12 - Fangface
 - 1 - MOVIE: "Alles John Law" A man posing as a gunman finds himself at the mercy of a lynch mob. Johnny Mack Brown 1936
 - 2 - 10:30 A.M.
 - 3 - Economically Speaking
 - 4 - New Pink Panther Show
 - 5 - 11:00 A.M.
 - 6 - Fabulous Funnies
 - 7 - Weather
 - 8 - Space Academy
 - 9 - Mairaid Corrigan
 - 10 - Weekend Bandstand
 - 11 - Special First of 3 parts. An unlikely assortment of people and a puppy make life complicated for two amateur bank robbers. (R)
 - 12 - MOVIE: "Everyman's Law" A man posing as a gunman finds himself at the mercy of a lynch mob. Johnny Mack Brown 1936
 - 1 - News
 - 2 - 11:30 A.M.
 - 3 - Bay City Rollers
 - 4 - Fat Albert & Cosby Kids
 - 5 - Victory Garden
 - 6 - American Bandstand
 - 7 - Viva Houston
 - 8 - 12:00 P.M.
 - 9 - Reflejos del Barrio
 - 10 - Community Awareness
 - 11 - "Ark II"
 - 12 - Book Beat
 - 1 - The Show
 - 2 - MOVIE: "Five Branded Women" Five Yugoslavian girls, who have their hair shorn

Shop at Lollypop
for your New Year's Fashions
10 a.m. - 6 p.m. Mon. - Fri.
9 a.m. - 5 p.m. Saturday
Lollypop Boutique
283-2741 1304 W. Bluff

THE Chester STATE BANK

COMPLETE BANKING
DRIVE IN WINDOW FACILITIES
NIGHT DEPOSITORY
SAFETY DEPOSIT BOXES

Call 969-2231

FDIC

Charlene Tilton (left), as Lucy, confronts her mother, Val (Joan Van Ark), upon learning that her long-lost father, Gary, is returning in the second of a two-part episode of "Dallas" to be rebroadcast Sunday, Dec. 31 on CBS.

SATURDAY 01/06/79

- 5:15 P.M.
- 1 - News
 - 2 - CBS News
 - 3 - Vistas
 - 4 - Sorting It Out
 - 5 - News
 - 6 - Local Messages
 - 7 - Hee Haw
 - 8 - Interchange
 - 9 - Wild Kingdom
 - 10 - Lawrence Welk
 - 11 - Movie Cont'd
 - 12 - Star Trek
 - 1 - 6:15 P.M.
 - 2 - News
 - 3 - Eyes of Texas
 - 4 - Tom Landry
 - 5 - Black Perspective
 - 6 - Home Weatherization
 - 7 - Who, What, How Do You Know
 - 8 - Pop! Goes the Country
 - 9 - The Ranger
 - 10 - Wanted: Dead or Alive
 - 11 - 1:15 P.M.
 - 12 - News
 - 1 - 1:30 P.M.
 - 2 - Sports Special
 - 3 - Movie
 - 4 - Lowell Thomas Remembers
 - 5 - Pro Bowler's Tour
 - 6 - The Miller High Life Classic in Anaheim, California, is featured. (90 min.)
 - 7 - Thriller
 - 8 - 2:00 P.M.
 - 9 - East-West Shrine Game
 - 10 - Top college seniors play in this all-star football game from Stanford Stadium in Palo Alto, Calif.
 - 11 - Nova
 - 12 - Mod Squad
 - 1 - NCAA Basketball: Rutgers at UCLA. The Scarlet Knights of Rutgers University play the Bruins of UCLA.
 - 2 - Gunsmoke
 - 3 - MOVIE: "Drecula" A vampire terrorizes the countryside in his search for human blood. Bela Lugosi, David Manners 1931
 - 4 - 3:00 P.M.
 - 5 - Weather
 - 6 - Cousteau Odyssey
 - 7 - East-West Shrine Game: Top college seniors play in this all-star football game from Stanford Stadium in Palo Alto, Calif.
 - 8 - 3:15 P.M.
 - 9 - News
 - 10 - 3:30 P.M.
 - 11 - Ironside
 - 12 - Woody Woodpecker
 - 1 - 4:00 P.M.
 - 2 - Local Messages
 - 3 - In Pursuit of Liberty
 - 4 - Bionic Woman
 - 5 - Tarzan
 - 6 - 4:30 P.M.
 - 7 - Hee Haw Honeys
 - 8 - Wild Kingdom
 - 9 - 5:00 P.M.
 - 10 - Positively Black
 - 11 - News
 - 12 - Weather
 - 1 - Feedback
 - 2 - Ope Pass, USA?
 - 3 - MOVIE: "Treasure Of San Gennaro" Four men and a woman steal the treasure of Naples' patron saint, Harry Guardino, Santa Borga, Nino Manfredi 1968
 - 4 - Voyage to the Bottom of the Sea
 - 5 - 5:15 P.M.
 - 6 - News
 - 7 - CBS News
 - 8 - Vistas
 - 9 - Sorting It Out
 - 10 - News
 - 11 - Local Messages
 - 12 - Hee Haw
 - 1 - Interchange
 - 2 - Wild Kingdom
 - 3 - Lawrence Welk
 - 4 - Movie Cont'd
 - 5 - Star Trek
 - 6 - 6:15 P.M.
 - 7 - News
 - 8 - Eyes of Texas
 - 9 - Tom Landry
 - 10 - Black Perspective
 - 11 - Home Weatherization
 - 12 - Who, What, How Do You Know
 - 1 - Pop! Goes the Country
 - 2 - The Ranger
 - 3 - Wanted: Dead or Alive
 - 4 - 1:15 P.M.
 - 5 - News
 - 6 - 1:30 P.M.
 - 7 - Sports Special
 - 8 - Movie
 - 9 - Lowell Thomas Remembers
 - 10 - Pro Bowler's Tour
 - 11 - The Miller High Life Classic in Anaheim, California, is featured. (90 min.)
 - 12 - Thriller
 - 1 - 2:00 P.M.
 - 2 - East-West Shrine Game
 - 3 - Top college seniors play in this all-star football game from Stanford Stadium in Palo Alto, Calif.
 - 4 - Nova
 - 5 - Mod Squad
 - 6 - NCAA Basketball: Rutgers at UCLA. The Scarlet Knights of Rutgers University play the Bruins of UCLA.
 - 7 - Gunsmoke
 - 8 - MOVIE: "Drecula" A vampire terrorizes the countryside in his search for human blood. Bela Lugosi, David Manners 1931
 - 9 - 3:00 P.M.
 - 10 - Weather
 - 11 - Cousteau Odyssey
 - 12 - East-West Shrine Game: Top college seniors play in this all-star football game from Stanford Stadium in Palo Alto, Calif.
 - 1 - 3:15 P.M.
 - 2 - News
 - 3 - 3:30 P.M.
 - 4 - Ironside
 - 5 - Woody Woodpecker
 - 6 - 4:00 P.M.
 - 7 - Local Messages
 - 8 - In Pursuit of Liberty
 - 9 - Bionic Woman
 - 10 - Tarzan
 - 11 - 4:30 P.M.
 - 12 - Hee Haw Honeys
 - 13 - Wild Kingdom
 - 14 - 5:00 P.M.
 - 15 - Positively Black
 - 16 - News
 - 17 - Weather
 - 18 - Feedback
 - 19 - Ope Pass, USA?
 - 20 - MOVIE: "Treasure Of San Gennaro" Four men and a woman steal the treasure of Naples' patron saint, Harry Guardino, Santa Borga, Nino Manfredi 1968
 - 21 - Voyage to the Bottom of the Sea
 - 22 - 5:15 P.M.
 - 23 - News
 - 24 - CBS News
 - 25 - Vistas
 - 26 - Sorting It Out
 - 27 - News
 - 28 - Local Messages
 - 29 - Hee Haw
 - 30 - Interchange
 - 31 - Wild Kingdom
 - 32 - Lawrence Welk
 - 33 - Movie Cont'd
 - 34 - Star Trek
 - 35 - 6:15 P.M.
 - 36 - News
 - 37 - Eyes of Texas
 - 38 - Tom Landry
 - 39 - Black Perspective
 - 40 - Home Weatherization
 - 41 - Who, What, How Do You Know
 - 42 - Pop! Goes the Country
 - 43 - The Ranger
 - 44 - Wanted: Dead or Alive
 - 45 - 1:15 P.M.
 - 46 - News
 - 47 - 1:30 P.M.
 - 48 - Sports Special
 - 49 - Movie
 - 50 - Lowell Thomas Remembers
 - 51 - Pro Bowler's Tour
 - 52 - The Miller High Life Classic in Anaheim, California, is featured. (90 min.)
 - 53 - Thriller
 - 54 - 2:00 P.M.
 - 55 - East-West Shrine Game
 - 56 - Top college seniors play in this all-star football game from Stanford Stadium in Palo Alto, Calif.
 - 57 - Nova
 - 58 - Mod Squad
 - 59 - NCAA Basketball: Rutgers at UCLA. The Scarlet Knights of Rutgers University play the Bruins of UCLA.
 - 60 - Gunsmoke
 - 61 - MOVIE: "Drecula" A vampire terrorizes the countryside in his search for human blood. Bela Lugosi, David Manners 1931
 - 62 - 3:00 P.M.
 - 63 - Weather
 - 64 - Cousteau Odyssey
 - 65 - East-West Shrine Game: Top college seniors play in this all-star football game from Stanford Stadium in Palo Alto, Calif.
 - 66 - 3:15 P.M.
 - 67 - News
 - 68 - 3:30 P.M.
 - 69 - Ironside
 - 70 - Woody Woodpecker
 - 71 - 4:00 P.M.
 - 72 - Local Messages
 - 73 - In Pursuit of Liberty
 - 74 - Bionic Woman
 - 75 - Tarzan
 - 76 - 4:30 P.M.
 - 77 - Hee Haw Honeys
 - 78 - Wild Kingdom
 - 79 - 5:00 P.M.
 - 80 - Positively Black
 - 81 - News
 - 82 - Weather
 - 83 - Feedback
 - 84 - Ope Pass, USA?
 - 85 - MOVIE: "Treasure Of San Gennaro" Four men and a woman steal the treasure of Naples' patron saint, Harry Guardino, Santa Borga, Nino Manfredi 1968
 - 86 - Voyage to the Bottom of the Sea
 - 87 - 5:15 P.M.
 - 88 - News
 - 89 - CBS News
 - 90 - Vistas
 - 91 - Sorting It Out
 - 92 - News
 - 93 - Local Messages
 - 94 - Hee Haw
 - 95 - Interchange
 - 96 - Wild Kingdom
 - 97 - Lawrence Welk
 - 98 - Movie Cont'd
 - 99 - Star Trek
 - 100 - 6:15 P.M.
 - 101 - News
 - 102 - Eyes of Texas
 - 103 - Tom Landry
 - 104 - Black Perspective
 - 105 - Home Weatherization
 - 106 - Who, What, How Do You Know
 - 107 - Pop! Goes the Country
 - 108 - The Ranger
 - 109 - Wanted: Dead or Alive
 - 110 - 1:15 P.M.
 - 111 - News
 - 112 - 1:30 P.M.
 - 113 - Sports Special
 - 114 - Movie
 - 115 - Lowell Thomas Remembers
 - 116 - Pro Bowler's Tour
 - 117 - The Miller High Life Classic in Anaheim, California, is featured. (90 min.)
 - 118 - Thriller
 - 119 - 2:00 P.M.
 - 120 - East-West Shrine Game
 - 121 - Top college seniors play in this all-star football game from Stanford Stadium in Palo Alto, Calif.
 - 122 - Nova
 - 123 - Mod Squad
 - 124 - NCAA Basketball: Rutgers at UCLA. The Scarlet Knights of Rutgers University play the Bruins of UCLA.
 - 125 - Gunsmoke
 - 126 - MOVIE: "Drecula" A vampire terrorizes the countryside in his search for human blood. Bela Lugosi, David Manners 1931
 - 127 - 3:00 P.M.
 - 128 - Weather
 - 129 - Cousteau Odyssey
 - 130 - East-West Shrine Game: Top college seniors play in this all-star football game from Stanford Stadium in Palo Alto, Calif.
 - 131 - 3:15 P.M.
 - 132 - News
 - 133 - 3:30 P.M.
 - 134 - Ironside
 - 135 - Woody Woodpecker
 - 136 - 4:00 P.M.
 - 137 - Local Messages
 - 138 - In Pursuit of Liberty
 - 139 - Bionic Woman
 - 140 - Tarzan
 - 141 - 4:30 P.M.
 - 142 - Hee Haw Honeys
 - 143 - Wild Kingdom
 - 144 - 5:00 P.M.
 - 145 - Positively Black
 - 146 - News
 - 147 - Weather
 - 148 - Feedback
 - 149 - Ope Pass, USA?
 - 150 - MOVIE: "Treasure Of San Gennaro" Four men and a woman steal the treasure of Naples' patron saint, Harry Guardino, Santa Borga, Nino Manfredi 1968
 - 151 - Voyage to the Bottom of the Sea
 - 152 - 5:15 P.M.
 - 153 - News
 - 154 - CBS News
 - 155 - Vistas
 - 156 - Sorting It Out
 - 157 - News
 - 158 - Local Messages
 - 159 - Hee Haw
 - 160 - Interchange
 - 161 - Wild Kingdom
 - 162 - Lawrence Welk
 - 163 - Movie Cont'd
 - 164 - Star Trek
 - 165 - 6:15 P.M.
 - 166 - News
 - 167 - Eyes of Texas
 - 168 - Tom Landry
 - 169 - Black Perspective
 - 170 - Home Weatherization
 - 171 - Who, What, How Do You Know
 - 172 - Pop! Goes the Country
 - 173 - The Ranger
 - 174 - Wanted: Dead or Alive
 - 175 - 1:15 P.M.
 - 176 - News
 - 177 - 1:30 P.M.
 - 178 - Sports Special
 - 179 - Movie
 - 180 - Lowell Thomas Remembers
 - 181 - Pro Bowler's Tour
 - 182 - The Miller High Life Classic in Anaheim, California, is featured. (90 min.)
 - 183 - Thriller
 - 184 - 2:00 P.M.
 - 185 - East-West Shrine Game
 - 186 - Top college seniors play in this all-star football game from Stanford Stadium in Palo Alto, Calif.
 - 187 - Nova
 - 188 - Mod Squad
 - 189 - NCAA Basketball: Rutgers at UCLA. The Scarlet Knights of Rutgers University play the Bruins of UCLA.
 - 190 - Gunsmoke
 - 191 - MOVIE: "Drecula" A vampire terrorizes the countryside in his search for human blood. Bela Lugosi, David Manners 1931
 - 192 - 3:00 P.M.
 - 193 - Weather
 - 194 - Cousteau Odyssey
 - 195 - East-West Shrine Game: Top college seniors play in this all-star football game from Stanford Stadium in Palo Alto, Calif.
 - 196 - 3:15 P.M.
 - 197 - News
 - 198 - 3:30 P.M.
 - 199 - Ironside
 - 200 - Woody Woodpecker
 - 201 - 4:00 P.M.
 - 202 - Local Messages
 - 203 - In Pursuit of Liberty
 - 204 - Bionic Woman
 - 205 - Tarzan
 - 206 - 4:30 P.M.
 - 207 - Hee Haw Honeys
 - 208 - Wild Kingdom
 - 209 - 5:00 P.M.
 - 210 - Positively Black
 - 211 - News
 - 212 - Weather
 - 213 - Feedback
 - 214 - Ope Pass, USA?
 - 215 - MOVIE: "Treasure Of San Gennaro" Four men and a woman steal the treasure of Naples' patron saint, Harry Guardino, Santa Borga, Nino Manfredi 1968
 - 216 - Voyage to the Bottom of the Sea
 - 217 - 5:15 P.M.
 - 218 - News
 - 219 - CBS News
 - 220 - Vistas
 - 221 - Sorting It Out
 - 222 - News
 - 223 - Local Messages
 - 224 - Hee Haw
 - 225 - Interchange
 - 226 - Wild Kingdom
 - 227 - Lawrence Welk
 - 228 - Movie Cont'd
 - 229 - Star Trek
 - 230 - 6:15 P.M.
 - 231 - News
 - 232 - Eyes of Texas
 - 233 - Tom Landry
 - 234 - Black Perspective
 - 235 - Home Weatherization
 - 236 - Who, What, How Do You Know
 - 237 - Pop! Goes the Country
 - 238 - The Ranger
 - 239 - Wanted: Dead or Alive
 - 240 - 1:15 P.M.
 - 241 - News
 - 242 - 1:30 P.M.
 - 243 - Sports Special
 - 244 - Movie
 - 245 - Lowell Thomas Remembers
 - 246 - Pro Bowler's Tour
 - 247 - The Miller High Life Classic in Anaheim, California, is featured. (90 min.)
 - 248 - Thriller
 - 249 - 2:00 P.M.
 - 250 - East-West Shrine Game
 - 251 - Top college seniors play in this all-star football game from Stanford Stadium in Palo Alto, Calif.
 - 252 - Nova
 - 253 - Mod Squad
 - 254 - NCAA Basketball: Rutgers at UCLA. The Scarlet Knights of Rutgers University play the Bruins of UCLA.
 - 255 - Gunsmoke
 - 256 - MOVIE: "Drecula" A vampire terrorizes the countryside in his search for human blood. Bela Lugosi, David Manners 1931
 - 257 - 3:00 P.M.
 - 258 - Weather
 - 259 - Cousteau Odyssey
 - 260 - East-West Shrine Game: Top college seniors play in this all-star football game from Stanford Stadium in Palo Alto, Calif.
 - 261 - 3:15 P.M.
 - 262 - News
 - 263 - 3:30 P.M.
 - 264 - Ironside
 - 265 - Woody Woodpecker
 - 266 - 4:00 P.M.
 - 267 - Local Messages
 - 268 - In Pursuit of Liberty
 - 269 - Bionic Woman
 - 270 - Tarzan
 - 271 - 4:30 P.M.
 - 272 - Hee Haw Honeys
 - 273 - Wild Kingdom
 - 274 - 5:00 P.M.
 - 275 - Positively Black
 - 276 - News
 - 277 - Weather
 - 278 - Feedback
 - 279 - Ope Pass, USA?
 - 280 - MOVIE: "Treasure Of San Gennaro" Four men and a woman steal the treasure of Naples' patron saint, Harry Guardino, Santa Borga, Nino Manfredi 1968
 - 281 - Voyage to the Bottom of the Sea
 - 282 - 5:15 P.M.
 - 283 - News
 - 284 - CBS News
 - 285 - Vistas
 - 286 - Sorting It Out
 - 287 - News
 - 288 - Local Messages
 - 289 - Hee Haw
 - 290 - Interchange
 - 291 - Wild Kingdom
 - 292 - Lawrence Welk
 - 293 - Movie Cont'd
 - 294 - Star Trek
 - 295 - 6:15 P.M.
 - 296 - News
 - 297 - Eyes of Texas
 - 298 - Tom Landry
 - 299 - Black Perspective
 - 300 - Home Weatherization
 - 301 - Who, What, How Do You Know
 - 302 - Pop! Goes the Country
 - 303 - The Ranger
 - 304 - Wanted: Dead or Alive
 - 305 - 1:15 P.M.
 - 306 - News
 - 307 - 1:30 P.M.
 - 308 - Sports Special
 - 309 - Movie
 - 310 - Lowell Thomas Remembers
 - 311 - Pro Bowler's Tour
 - 312 - The Miller High Life Classic in Anaheim, California, is featured. (90 min.)
 - 313 - Thriller
 - 314 - 2:00 P.M.
 - 315 - East-West Shrine Game
 - 316 - Top college seniors play in this all-star football game from Stanford Stadium in Palo Alto, Calif.
 - 317 - Nova
 - 318 - Mod Squad
 - 319 - NCAA Basketball: Rutgers at UCLA. The Scarlet Knights of Rutgers University play the Bruins of UCLA.
 - 320 - Gunsmoke
 - 321 - MOVIE: "Drecula" A vampire terrorizes the countryside in his search for human blood. Bela Lugosi, David Manners 1931
 - 322 - 3:00 P.M.
 - 323 - Weather
 - 324 - Cousteau Odyssey
 - 325 - East-West Shrine Game: Top college seniors play in this all-star football game from Stanford Stadium in Palo Alto, Calif.
 - 326 - 3:15 P.M.
 - 327 - News
 - 328 - 3:30 P.M.
 - 329 - Ironside
 - 330 - Woody Woodpecker
 - 331 - 4:00 P.M.
 - 332 - Local Messages
 - 333 - In Pursuit of Liberty
 - 334 - Bionic Woman
 - 335 - Tarzan
 - 336 - 4:30 P.M.
 - 337 - Hee Haw Honeys
 - 338 - Wild Kingdom
 - 339 - 5:00 P.M.
 - 340 - Positively Black
 - 341 - News
 - 342 - Weather
 - 343 - Feedback
 - 344 - Ope Pass, USA?
 - 345 - MOVIE: "Treasure Of San Gennaro" Four men and a woman steal the treasure of Naples' patron saint, Harry Guardino, Santa Borga, Nino Manfredi 1968
 - 346 - Voyage to the Bottom of the Sea
 - 347 - 5:15 P.M.
 - 348 - News
 - 349 - CBS News
 - 350 - Vistas
 - 351 - Sorting It Out
 - 352 - News
 - 353 - Local Messages
 - 354 - Hee Haw
 - 355 - Interchange
 - 356 - Wild Kingdom
 - 357 - Lawrence Welk
 - 358 - Movie Cont'd
 - 359 - Star Trek
 - 360 - 6:15 P.M.
 - 361 - News
 - 362 - Eyes of Texas
 - 363 - Tom Landry
 - 364 - Black Perspective
 - 365 - Home Weatherization
 - 366 - Who, What, How Do You Know
 - 367 - Pop! Goes the Country
 - 368 - The Ranger
 - 369 - Wanted: Dead or Alive
 - 370 - 1:15 P.M.
 - 371 - News
 - 372 - 1:30 P.M.
 - 373 - Sports Special
 - 374 - Movie
 - 375 - Lowell Thomas Remembers
 - 376 - Pro Bowler's Tour
 - 377 - The Miller High Life Classic in Anaheim, California, is featured. (90 min.)
 - 378 - Thriller
 - 379 - 2:00 P.M.
 - 380 - East-West Shrine Game
 - 381 - Top college seniors play in this all-star football game from Stanford Stadium in Palo Alto, Calif.
 - 382 - Nova
 - 383 - Mod Squad
 - 384 - NCAA Basketball: Rutgers at UCLA. The Scarlet Knights of Rutgers University play the Bruins of UCLA.
 - 385 - Gunsmoke
 - 386 - MOVIE: "Drecula" A vampire terrorizes the countryside in his search for human blood. Bela Lugosi, David Manners 1931
 - 387 - 3:00 P.M.
 - 388 - Weather
 - 389 - Cousteau Odyssey
 - 390 - East-West Shrine Game: Top college seniors play in this all-star football game from Stanford Stadium in Palo Alto, Calif.
 - 391 - 3:15 P.M.
 - 392 - News
 - 393 - 3:30 P.M.
 - 394 - Ironside
 - 395 - Woody Woodpecker
 - 396 - 4:00 P.M.
 - 397 - Local Messages
 - 398 - In Pursuit of Liberty
 - 399 - Bionic Woman
 - 400 - Tarzan
 - 401 - 4:30 P.M.
 - 402 - Hee Haw Honeys
 - 403 - Wild Kingdom
 - 404 - 5:00 P.M.
 - 405 - Positively Black
 - 406 - News
 - 407 - Weather
 - 408 - Feedback
 - 409 - Ope Pass, USA?
 - 410 - MOVIE: "Treasure Of San Gennaro" Four men and a woman steal the treasure of Naples' patron saint, Harry Guardino, Santa Borga, Nino Manfredi 1968
 - 411 - Voyage to the Bottom of the Sea
 - 412 - 5:15 P.M.
 - 413 - News
 - 414 - CBS News
 - 415 - Vistas
 - 416 - Sorting It Out
 - 417 - News
 - 418 - Local Messages
 - 419 - Hee Haw
 - 420 - Interchange
 - 421 - Wild Kingdom
 - 422 - Lawrence Welk
 - 423 - Movie Cont'd
 - 424 - Star Trek
 - 425 - 6:15 P.M.
 - 426 - News
 - 427 - Eyes of Texas
 - 428 - Tom Landry
 - 429 - Black Perspective
 - 430 - Home Weatherization
 - 431 - Who, What, How Do You Know
 - 432 - Pop! Goes the Country
 - 433 - The Ranger
 - 434 - Wanted: Dead or Alive
 - 435 - 1:15 P.M.
 - 436 - News
 - 437 - 1:30 P.M.
 - 438 - Sports Special
 - 439 - Movie
 - 440 - Lowell Thomas Remembers
 - 441 - Pro Bowler's Tour
 - 442 - The Miller High Life Classic in Anaheim, California, is featured. (90 min.)
 - 443 - Thriller
 - 444 - 2:00 P.M.
 - 445 - East-West Shrine Game
 - 446 - Top college seniors play in this all-star football game from Stanford Stadium in Palo Alto, Calif.
 - 447 - Nova
 - 448 - Mod Squad
 - 449 - NCAA Basketball: Rutgers at UCLA. The Scarlet Knights of Rutgers University play the Bruins of UCLA.
 - 450 - Gunsmoke
 - 451 - MOVIE: "Drecula" A vampire terrorizes the countryside in his search for human blood. Bela Lugosi, David Manners 1931
 - 452 - 3:0

Young Blood Invigorates Royal Canadians

By JOAN GEOGHEGAN

As the Royal Canadians play "Auld Lang Syne" and usher in 1979, more than the date will be new. The band playing from the Waldorf Astoria ballroom will be conducted by young Bill Lombardo, nephew of the band's founder, Guy Lombardo.

This is Bill's first year conducting the band. Although the 31-year-old rock-'n'-roll drummer had played a New Year's gig with the band in 1972, he returned to his own rock group.

The good-looking, dark-haired musician is soft-spoken as he comments on his new responsibility.

"It's not easy to present a band. I've been back there (drumming) and been in almost every phase of music, back and forth from rock."

He's confident he can bring new zest and a new audience to a band that's been swinging since 1920.

The Royal Canadians' Waldorf party traditionally features middle-aged couples fox-trotting before the cameras. Younger people are apt to turn to a rock celebration of New Year's Eve.

According to Bill, "The Royal Canadians are a family band," and he's inheriting the conductor's baton because "my father (Lebert Lombardo) loves to play trumpet. He's been doing it for so many years that he realizes the only hope for the band is to get someone young in to continue it. We have a lot of young players, my father is the only original."

Bill's father was with the band in 1929 when the Royal Canadians did their first radio broadcast at the Roosevelt Grill (in Manhattan). Bill's debut marks the 50th anniversary of the band's association with New Year's Eve.



Ex-rock drummer Bill Lombardo picks up his uncle Guy's baton and conducts "New Year's Eve with Guy Lombardo's Royal Canadians," Sunday, Dec. 31, on CBS.

"They just happened to be there," Bill says. "Robert Burns Panatella Company had sponsored them, and since Robert Burns wrote 'Auld Lang Syne,' it became the band's theme song. They used that theme song for opening and closing even before they were doing the New Year's Eve broadcast."

The Roosevelt Hotel was home base for The Royal Canadians for 32 years. They had a syndicated TV show, too.

Of his childhood, Bill says, "I can remember Dad going to work when I was a kid and asking him to do 'The Chicken Song' and going to the Rainbow Grill in person... the imposing twin pianos and everyone having a great time."

Although Bill is the son and nephew of big band musicians, once he reached adolescence, all

he wanted to play was rock 'n' roll.

Bill grins and admits, "I was into pre-Beatles, Beach Boys surf music. We did James Brown and 'Louie, Louie' in the California clubs. Then in '71, I moved East and joined the family band."

"Bill and the other young band members will try to appeal to a younger audience by incorporating contemporary music into the Waldorf stint. 'Country music, Lombardo style, of course, written up and arranged around our band," Bill says. "Country Roads" and "Release Me" are two potentials.

Bill cautions audiences not to expect rock from the Royal Canadians; though, he insists, "We're still playing the sweetest music this side of heaven."

He explains that the Royal Canadians' "sweet sound" is "sweet saxo-

phone and muted trumpets." But, he may change the tempo to do one or two disco arrangements — still in the Lombardo style.

Some of the contemporary sounds Bill will incorporate into the set list are Barry Manilow's "Can't Smile Without You" and "Winchester Cathedral." He also thinks songs by Billy Joel and Jimmy Webb would be good.

Of course, there are numbers like "Boo Hoo" and "Little Coquette," "Songs that Uncle Carmen made famous." Bill couldn't drop these favorites.

Bill earnestly claims, "I'm earning my stripes right now. I draw up the set list. It's not as easy as you might imagine. Dad helps me with pacing. No two songs with the same pacing in a row."

He hopes the 1979 New Year's Eve show won't be

nostalgia, but will evolve into something new. "There's a very subtle difference in the band, new blood."

Although many big bands have kept going, Bill says that The Royal Canadians is the most enduring. "Swing could come back. The only difference between disco and swing is rhythm. Swing is bounce; disco is straight ahead. You can play almost anything over the disco beat."

Bill, who lives in Wilton, Conn., with his wife and two children (ages 2 and 6), may be the second generation in a progression of Lombardo bands.

Will there be a third generation of Lombardos ushering in the New Year?

A smile flashes across Bill's face, and he says, "I can't say I haven't entertained the thought, but I want them to choose. I never thought of being in this band — I'm just in music because I liked it."

Soap suds

Michael Ingram (Vinnie Wolek on "One Life to Live") has landed the lead role in "Savara," a Broadway musical scheduled to open in January. He has also completed a demo tape for an album he wants to cut of songs he co-wrote.

If you're watching "One Life to Live" and you notice Bill Mooney (Paul Martin on "All My Children") on the screen, do not consider having your eyes examined. Paul is visiting Llanview on some important legal business as part of a hot new story on "One Life."

Host named

"Razzmatazz," the CBS News magazine focusing on interesting activities and achievements of young people, returns to the CBS schedule, Feb. 1. It will air the first Thursday of every month. Brian Tochi, a 19-year-old actor who has appeared in TV series and movies, commercials and the theater, has been named host.

Track 'n' field

The 1979 World Cup Track and Field Championships from Olympic Stadium in Montreal will broadcast over ABC-TV on Friday, Aug. 24.

THE SHEIK

A school teacher (Arte Johnson), who is tired of putting up with spoiled debutantes, journeys to "Fantasy Island" where he gets his own harem, Saturday, Jan. 6, on ABC.



Chickadees and nuthatches are two kinds of birds that are very fond of peanut butter.

20 Years Experience! 30 Day Warranty!

DIAL FRED'S T.V. FOR SERVICE 283-7409

Call Us Today

Free Estimates on work brought in

heads west

natural motion - precision haircutting for men and women.

SPECIALIZING IN THE LATEST CUTS AND ORGANIC PERMS & ORGANIC HENNA'S

837-5327

Wed. & Sat. till 6 p.m. located on highway 69, 3 miles south of Colmesneil and 6 miles north of Woodville

Thurs. & Fri. till 9 p.m.

best in the west

MANN FURNITURE

206 W. Bluff 283-3740

RCA

- Low power consumption; only 28 watts on average.
- One-set VHF tuning "remembers" your initial setting, seldom needs readjusting.

Dual-function VHF/UHF antenna.

16" Diagonal AB1615 Model R.C.A. **\$148⁸⁸**

Direct Furniture Showcase

302 N. Magnolia 283-5211