

# Tyler County Mental & Physical Handicap Association Meets Thursday Feb. 1

"Serving Tyler County Since 1930"

# The Tyler County BOOSTER

Vol. 52 2 Parts Thursday, February 1, 1979  
No. 5 18 Pages Woodville, Texas 75799 15

## Major Alford Selected 'Citizen-Of-The-Year'

Over 125 persons were treated to the Tyler County Chamber of Commerce Annual Banquet held last Friday at Woodville High School cafeteria.

Chosen as "Citizen of the Year" was M.F. (Major) Alford, who for many years has been dedicated to Chamber of Commerce work here in Tyler County.

Alford, who said he was totally surprised at receiving the award, said that he would have to start to get busy to work again, to show the award that he deserved it.

Receiving the coveted "Life-Membership" award from the Chamber of Commerce was a Colmesneil resident, Lou Ella Mosley, for her efforts toward bringing better understanding about the people of Tyler County.

Featured speaker for the evening was O. Ray Hurst, M.E. who is president of the Texas Hospital Association and who told the group about how his organization works.

Browder and Chamber of Commerce Presidents: Bob Bell from the Livingston Chamber of Commerce and Morris Windham from the Silsbee Chamber of Commerce.

Bud Byram, new Chamber President, installed at the banquet, took office saying that, "Our accomplishments will be directly proportionate to what we want."

"To make it work will require coordination, understanding and an effort from every concerned individual. It cannot be done alone," he said.

Byram announced at the banquet that he had initiated an all new Tyler County Retail Merchants Council.

These appointed individuals will be a point of source and communication for all municipalities and townships in our county. It is my hope that this council will generate a purpose of oneness throughout the entire area and perpetuate itself for many years to come.

Persons holding Committee responsibilities are: Budget: Bertis Best, Austin Fuller and Webb Ashworth; Civic Improvement responsibilities will be held by Tom Knapp, Boy Boykin and Bruce Latolais; Industrial Development Committee members include M.F. Alford, Harry Stafford, F.M. Archer and Carl Nichols.

Membership and dues committee work will be conducted by Fred Sullivan, Louise Faircloth, Joe Riley, Clyde Bennett, Tom Knapp, Scott Gilchrist, Phil McClure and Larry Tresi.

Publicity and Public Relations will be handled by Jim Clark, Don Stevenson and John Morrison.

The all important Tourism Committee will be administered by members Bud Byram, Clyde Gray, Carl Nichols, M.F. Alford and Fred Sullivan.



1979 MISS TYLER COUNTY CONTESTANTS—Barbara Brown and Lynn Hays, co-producers of The Miss Tyler County Pageant, hosted a coke party recently for the contestants. The girls shown from left to right are: (Front Row) Shirley Dumesnel, Spurger, L&J General Store; Faye Dell Marshall, Chester, Thomas Florist; Charlene Faircloth, Colmesneil, Western Auto; Connie Hicks, Spurger, Tyler County Booster; Janet Paul, Spurger, Citizens State Bank. (Second Row) Amy Cawart, Colmesneil, First State Bank Colmesneil; Beverly Mitchem, Colmesneil, KYLL Radio; Janey Burlew, Chester, Brookshire; Briss, Tom Brown, Woodville, Lollipop Boutique; and Kim Thompson, Woodville, Big Star.



M.F. (Major) Alford

to keep state and federal regulations at a minimum which he says are what drives up the cost of hospital and medical care. Hurst reported that Texas is somewhat better than other states in keeping the burden of regulation down. Hurst said he spends a lot of time in Washington, D.C. trying to keep the regulation out of the state.

Special guests attending festivities included State representative and Mrs. Jim

County Retail Merchants Council are the following persons: Woodville, Eunice Bohannon; Colmesneil, Max Lade; Chester, Tullis Thornton; Warren, Harold Davis; Spurger, Judy Griffin; Fred, W.A. McInnis; Dam-B, Stanley Head.

Chamber of Commerce Directors for the coming year will be: Bob Boykin, Byram; Lawrence Upchurch; Robert Woods; Clyde Bennett; Bertis Best; Tom Knapp.

## Florence Williams Joins 'Booster' Newspaper Team

Mrs. Florence M. Williams of Woodville has joined the Tyler County Booster this week as a full charge bookkeeper and receptionist.

Mrs. Williams will hold responsibilities in billing and accounting areas involving retail advertising, classified advertising, mailing payroll, and the bookwork generally required in a good local newspaper.

She has worked for the Tyler County auditors office previously as well as for a Tyler County Precinct Justice.

Mrs. Williams will also be responsible for accounting work associated with The Newton County News, which has recently been acquired.

The mother of three girls: Becky, 16; Barbara, 14; and Beth, 23, Mrs. Williams has been a resident of Woodville for 24 years. She is married to the Rev. Buren P. Williams.

as an employee of this newspaper.

According to BOOSTER Publisher/Editor John Morrison, "Mrs. Williams brings a pleasant personality to this responsibility which is a hard duty to fill. We all look forward to her smiling face and good work habits which we know she has. She will make a very definite contribution to both The Tyler County Booster and The Newton County News."



Florence Williams

"According to Mrs. Williams, 'I feel I would have some contributions to make to the Tyler County Booster in this position. Being trained in the field of bookkeeping and the field of accounting will help me fulfill this. I do enjoy public relations and meeting with people. I am anticipating a long, lasting and interesting relationship

## Pageant Hopefuls

Persons who are interested in joining the Chamber may contact Faye Ward, Executive Secretary, by calling 283-2632.

# Dogwood Festival Activities Starting Up

Beard Growing Contest —New Event— Dogwood Marathon Make Dogwood Flowers

The 1979 Western Week activities get underway this week with registration for the annual beard growing contest.

Jim Clark, Western Week End Chairman, announced that Richard "Rip" Collins has been named Chairman of the contest and Collins has scheduled the registration for Saturday, February 3rd between 9:30 a.m. and 12 noon at Woodville Feed & Supply, 209 East Bluff Street.

All entrants must be clean shaven and will have until 31 (3 weeks) to do their best to win a trophy for either the longest, neatest or sexiest beard. Judging will take place at 4 p.m. on that date just before the Rodeo.

Collins stated that there would be shaving cream and a razor available for those not clean-shaven.

The Tyler County Dogwood Festival will be adding a new feature this year with the First Annual Tyler County Dogwood Marathon according to Dr. Gayle Burton, coordinator of the event.

"Perhaps this should be called a fun-athon as it will be for anyone who wants to enter," he said.

According to Burton, a 10,000 meter race will be part of the Marathon (6.2 miles). Finishing the goal can be accomplished by running, walking, or even crawling, Burton said.

Burton said that registration information will be coming soon and he urges persons who are interested to start getting in shape now.

One sure way to bring some color and cheer into your life is to think "Flowers".

Flowers, the kind that local Dogwood Festival volunteers make about 200,000 of each year for the Tyler County Dogwood Festival held annually in Woodville the first weekend in April, says Judy Watts, publicity coordinator.

Some local residents are already surrounded by paper

petals and are busy at the task of Dogwood flower making.

You can join this winter fun bunch by calling Dixie Jarrott at 283-2003.

Your reward for work well done will be evidenced on April when the amphitheater unfolds a Fantasy Land of natural and handmade beauty for the thousands of folks who celebrate the coming of spring with the Tyler County Dogwood Festival, Mrs. Watts said.

## Charges Filed

A criminal complaint has been filed, charging County Commissioner, Leon Fowler, with assault, resulting from an apparent slugging incident which occurred on Jan. 15 inside the Tyler County Courthouse.

Melvin Tarver, a sheriff's deputy, brought the complaint to Precinct Justice John Spanhans office where it was then referred to the County Court at law with County Judge Allen Sturrock presiding.

The actual complaint was filed officially on Feb. 25, after Tarver had spent some time in a Jasper hospital.

Fowler was arraigned before Peace Justice Spanhans on the same day that the assault charge was filed.

The case which is a Class A Misdemeanor can result in a fine from \$1 to \$2,000 or a jail term not to exceed one year, of both.

According to the speedy trial act, the case must come before the county court at law within 60 days from the date it was filed. Fowler is represented by Attorney Jim Allison.

The Tyler County Chamber of Commerce will meet Monday, Feb. 15, at 7 p.m. in the Citizens State Bank Community Room.

## Chamber To Meet

The Tyler County Chamber of Commerce will meet Monday, Feb. 15, at 7 p.m. in the Citizens State Bank Community Room.



TREE DEDICATION—Members of the Woodville Garden Club are shown gathered around a just planted crepe myrtle tree at the entrance to the new Woodville High School. The tree, a crepe myrtle, was planted to honor Eitel Osborn Hill, the only life charter member of the club. Invocation which opened the ceremony was delivered by Reverend Buford Finley. A song was sung by Mrs. Ruth Huston and a special dedication remarks were delivered by longtime friend of Mrs. Hill, Morris Clemmons. The benediction for the ceremony was delivered by the Chaplain of the Woodville Garden Club, Mrs. T.E. Phillips.

## At School Entrance







# Kirby Corner

BY NOVELLA McCULLOUGH  
FAVORITES CHOSEN  
Last week's ballers were distributed by the Echo Staff to allow the students to vote on "class favorites." Those chosen are as follows: Freshmen - Trey Allison and Martha Hanna; Sophomores - Don Freeman and Janet Spelock; Junior - John Odum and Karen Harrison; Senior - Charles Branch and Susan Brodnax.

# SALE

ONE WEEK ONLY - PROCEEDS FOR FEBRUARY 7, 1979

## YOUR CHOICE 49c

MIRRO ALUMINUM FOLIOWARE

Make such tables, chairs, etc. You can't get this quality at this price!

4000 LAYERS  
Four in Package

4000 LAYERS  
Four in Package

4000 LAYERS  
Four in Package

4000 LAYERS  
Four in Package

## DOOR-BOTTOM WEATHERSTRIP

Selected from seven sizes 3/8" to 1 1/2" wide. 3/8" - \$1.99, 1/2" - \$2.49, 5/8" - \$2.99, 3/4" - \$3.49, 1" - \$3.99, 1 1/4" - \$4.49, 1 1/2" - \$4.99.

100% POLYURETHANE

DOOR-BOTTOM WEATHERSTRIP

44c each

## 2 BATTERIES 69c

2 BATTERIES 69c VALUE

Eveready Batteries

19c each

211 W. Bluff

### Lunch Menus

MONDAY: Pizza, tossed salad w/ French dressing, baked beans, peanut butter cookie and milk. 19c.

TUESDAY: Hamburger, steak w/ catsup, potatoes w/ gravy, green beans, waffle applesauce, cornbread and milk. 19c.

WEDNESDAY: Veg. beef stew, rice, turnips, green peas, peach cobbler, cornbread and milk. 19c.

THURSDAY: Steak in fingers w/ catsup, French fried cabbage slaw, jello, hot roll and milk. 19c.

FRIDAY: Hot dog w/ chili, green salad w/ dressing, potato beans, chocolate brownie and milk. 19c.

CONSOLIDATED REPORT OF CONDITION

ASSETS	LIABILITIES
Cash	Accounts Payable
Accounts Receivable	Notes Payable
Inventory	Other Liabilities
Fixed Assets	Total Liabilities
Total Assets	Total Liabilities & Equity

# Bulldog Grows

BY SHARON LAWSON  
Mentoring at Colmesneil school has created an atmosphere of "happy busy-ness" and the students here at Colmesneil have their exciting Bulldog spirit.

HONOR ROLL  
Colmesneil students received their report cards Thursday, January 18, and many of the students are the honor roll. They are: Seavey Grade All A's: Wanda Piekens and Russell Hunter; All A's and one B: Andrew Spears and Gary Eagle; Eighth Grade All A's: Matthew England, Nath Grade All A's: Sandra, Kitchens, Robert, Richardson; All A's and one B: Kathy Jackson, Leah Gilder, Elizabeth, Grade All A's: Glynis Gilder, All A's and one B: Vicki, Suzanne Martin and Gina Temple; Twelfth Grade All A's and one B: Darlene Carter, Beverly Mitchem and Vanessa Ward.

# Colmesneil Smashes Brookeland

Brookeland-In search of the District 50-B crown for the second time in as many years, the Colmesneil girls' team smashed Brookeland by the score of 53 to 24. The game was on January 23.

# Leggett Downs Pirates 63-41

Leggett-The Leggett Pirates led in the first period, jumping out to a 9 to 6 score, and kept their lead at halftime, 18 to 14.

# Leggett Downs Pirates 63-41

Leggett-The Leggett Pirates led in the first period, jumping out to a 9 to 6 score, and kept their lead at halftime, 18 to 14.

# Leggett Downs Pirates 63-41

Leggett-The Leggett Pirates led in the first period, jumping out to a 9 to 6 score, and kept their lead at halftime, 18 to 14.

# Leggett Downs Pirates 63-41

Leggett-The Leggett Pirates led in the first period, jumping out to a 9 to 6 score, and kept their lead at halftime, 18 to 14.

# Leggett Downs Pirates 63-41

Leggett-The Leggett Pirates led in the first period, jumping out to a 9 to 6 score, and kept their lead at halftime, 18 to 14.

# Leggett Downs Pirates 63-41

Leggett-The Leggett Pirates led in the first period, jumping out to a 9 to 6 score, and kept their lead at halftime, 18 to 14.

# Leggett Downs Pirates 63-41

Leggett-The Leggett Pirates led in the first period, jumping out to a 9 to 6 score, and kept their lead at halftime, 18 to 14.

# Leggett Downs Pirates 63-41

Leggett-The Leggett Pirates led in the first period, jumping out to a 9 to 6 score, and kept their lead at halftime, 18 to 14.



REBOUND! A Chester Yellowjacket-ette goes up for a rebound against the Colmesneil Bulldogs. Colmesneil triumphed over Chester by a 56 to 41 score.

# Colmesneil Wins 48-46

The Colmesneil Bulldogs nearly pulled off a upset against District 50-B, but Chester, after finishing the third quarter with a 24 to 28 lead.

# Colmesneil Wins 48-46

The Colmesneil Bulldogs nearly pulled off a upset against District 50-B, but Chester, after finishing the third quarter with a 24 to 28 lead.

# Colmesneil Wins 48-46

The Colmesneil Bulldogs nearly pulled off a upset against District 50-B, but Chester, after finishing the third quarter with a 24 to 28 lead.

# Colmesneil Wins 48-46

The Colmesneil Bulldogs nearly pulled off a upset against District 50-B, but Chester, after finishing the third quarter with a 24 to 28 lead.

# Colmesneil Wins 48-46

The Colmesneil Bulldogs nearly pulled off a upset against District 50-B, but Chester, after finishing the third quarter with a 24 to 28 lead.

# TYLER COUNTY BOOSTER / SPORTS

## Warren Loses To Newton

WARREN-The Warren Warriors got the second leg of the District 17-A-8 off to a bad start against the Newton Eagles last Tuesday night, January 23. Newton won on a last-minute controversial call, winning the game by the score of 52 to 49.

## Woodville Wins 66-60

WOODVILLE-The Woodville Eagles faced their cross-county rivals for the second time in the District 17-A-8 season, and beat them once again, by the score of 66 to 60. The game was played last Friday night, January 26.

## Spurger Loses Fourth Straight

SPURGER-The Spurger Pirates dropped their fourth straight District 49-B contest to the High Island Cardinals last Friday night, January 26. Spurger was downed by the score of 31 to 45.

## Piraettes Bombed 43-23

SPURGER-The Spurger Pirates were bombed by the High Island girls' team, last Friday, on January 30, by the score of 43 to 23.

## Girls Win 56-41

Colmesneil-The Colmesneil Bulldogs girls' team took another step toward the District 50-B crown against the Chester Yellowjacket-ettes, by the score of 56 to 41, last Friday night.

## Warren Loses

WARREN-The Warren Warriors, virtually out of the District 17-A-8 race, dropped another game to the Newton-Eagle-ettes, losing by the score of 52 to 49.

## Warren Loses

WARREN-The Warren Warriors, virtually out of the District 17-A-8 race, dropped another game to the Newton-Eagle-ettes, losing by the score of 52 to 49.

## Warren Loses

WARREN-The Warren Warriors, virtually out of the District 17-A-8 race, dropped another game to the Newton-Eagle-ettes, losing by the score of 52 to 49.

## Warren Loses

WARREN-The Warren Warriors, virtually out of the District 17-A-8 race, dropped another game to the Newton-Eagle-ettes, losing by the score of 52 to 49.

# Newcomer News

BY SUSAN RAMOS  
So many of the newcomers that we have greeted are extremely happy to be a part of our great county, and we are certain they will love it here.

BY SUSAN RAMOS  
So many of the newcomers that we have greeted are extremely happy to be a part of our great county, and we are certain they will love it here.

BY SUSAN RAMOS  
So many of the newcomers that we have greeted are extremely happy to be a part of our great county, and we are certain they will love it here.

BY SUSAN RAMOS  
So many of the newcomers that we have greeted are extremely happy to be a part of our great county, and we are certain they will love it here.

BY SUSAN RAMOS  
So many of the newcomers that we have greeted are extremely happy to be a part of our great county, and we are certain they will love it here.

BY SUSAN RAMOS  
So many of the newcomers that we have greeted are extremely happy to be a part of our great county, and we are certain they will love it here.

BY SUSAN RAMOS  
So many of the newcomers that we have greeted are extremely happy to be a part of our great county, and we are certain they will love it here.

BY SUSAN RAMOS  
So many of the newcomers that we have greeted are extremely happy to be a part of our great county, and we are certain they will love it here.

# Redbud Festival Soon

The 7th annual Redbud Festival, held in Buna, Texas, each spring, will include a Flea Market this year, according to Mike Burroughs, Redbud Festival Chairman.

# C & H GARBAGE PICKUP

County wide weekly routes residential pick-up weekly commercial pick-up twice weekly (Garbage must be plastic bagged.) 283-2940, after 5 p.m. 429-3232

# "If we make an error, we pay the penalty. And the interest."

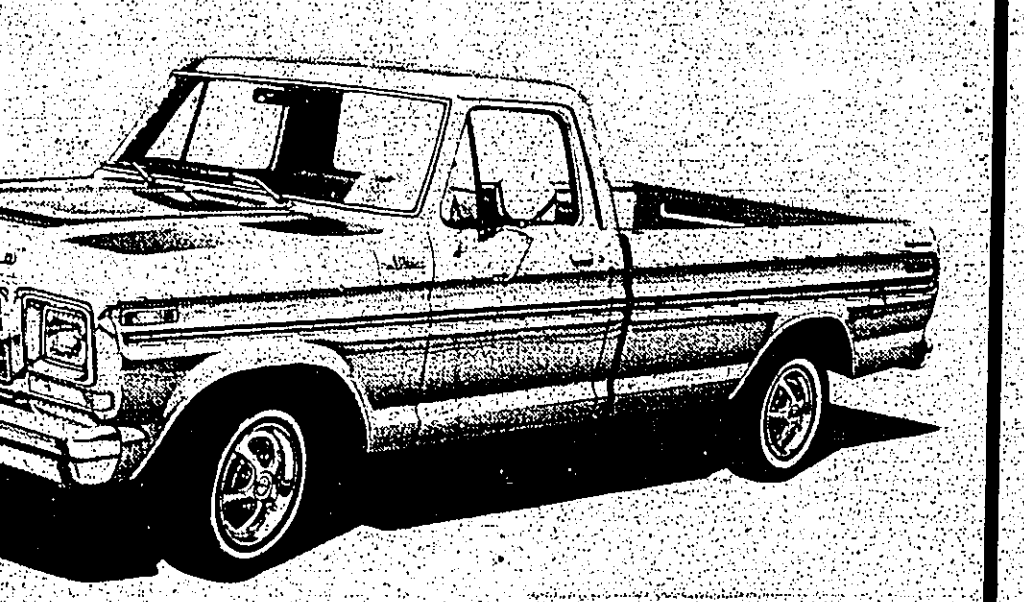
H&R Block preparers are carefully trained. But if we should ever make an error that costs you additional tax, you pay only the tax. Block pays any penalty and interest. We stand behind our work. That's another reason why we should do your taxes, which ever form you use, short or long.

# H&R BLOCK

THE INCOME TAX PEOPLE  
430 S. Magnolia  
Open 8-6 Weekdays 8-12 Saturday 283-3472  
No Appointment Necessary

# UP TO \$350.00 FACTORY DISCOUNT

# ON 1979 SPECIAL EDITION FORD EXPLORER PICKUPS



The 1979 Explorer package includes unique seat trim, tape stripes, mag-style wheel covers, extra chrome moldings, chrome grill, Explorer hood ornament, color-keyed seat belts, color-keyed floor covering and headliner, bright western mirrors and cigarette lighter.

# See the '79 Explorers and Other Fine Ford Trucks at

# Jack Lane Ford, Inc.

104 Pine 283-2526



# Sea Arama Readies For Scouts

Sea-Arama Marineworld on Galveston Island is ready for the "entertainment park" for thousands of Boy Scouts, Cub Scouts, and Webelos who will participate in the celebration of the 69th Anniversary of Boy Scouts of America. Special salute activities will be held each weekend the entire month of February with free campsites, firewood, and

water provided for overnight camping. According to Ralph McPheeters, Office of Educational Services for the park, "We have spent a great deal of time working with scouting professionals who have laid out more rigid and enlarged Obstacle Courses and Adventure Trails for the Cub Scouts and exciting and challenging Camporee Events for the Boy Scouts." The Bay Area Boy Scout Council has joined the park in sponsoring the four February weekends.

McPheeters said: "Camporee activities will be held each Saturday afternoon from 1 to 4 p.m. with a special awards campfire at 7 p.m. on Saturday evenings." Cub Scouts' Adventure Trail takes place all day, and the Obstacle Course will take place from 1 to 4 p.m. on Saturdays. Saturday night masses and Sunday morning religious services will be provided at the park for Scouts and Leaders who wish to attend.

Educational exhibits and films go to make up the package for the salute which includes the park's live shows: Disco Dolphin Revue, Sea Lion Water Olympics, Venomous Snake Handling, Exotic Bird Pirate Frolics, Oceanarium Deep Sea Diver Show, and the newest addition to the Jungle Fantasy. Scouts will view this fast-moving show which features a 400 lb. Bengal Tiger, 185 Asian Leopard, 140 lb. black on black panther, and a 73 lb. German Shepherd. Owner and trainer, John Campolongo will give special lectures on training and caring of the wild animals.

The Bay Area Council has arranged with Sea-Arama Marineworld this year in include the Sea-Arama Marine world 1979 patch in the special \$3 scout admission price. McPheeters urged any Boy Scout, Cub Scout, Webelos, or Explorer who has not made reservations at this time, to contact the Sea-Arama Marine world Reservations Office as soon as possible.

# Basketball Camps For Girls Grow

PORTALES-The Fourth Annual Sunshine Girls' Basketball Camps of Eastern New Mexico University have been enlarged to four locations and six sessions this summer in New Mexico, Texas, and Arizona.

Sunshine Basketball Camps have been held in Portales and Tucson, Ariz., and have been expanded to Aztec, N.M., Casa Grande-Coolidge, Ariz., and Clarendon, Texas.

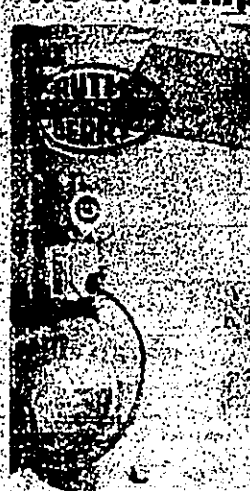
One of the premier girls' basketball camps in the nation, Sunshine Camp has a staff of outstanding high school, college, and professional coaches and players, including several All-Americans from the nation's top teams.

Sunshine Camps are designed for students who will be in grades seven through 12 during 1979-80. Girls are taught fundamentals of basketball with special attention given to the post play, jump shot, guard play and the pressing defense.

Enrollment will be limited for each session to assure that each participant will receive plenty of individual work and attention. Simulated and actual game conditions will allow maximum use of drill and instruction.

Camp sessions at ENMU in Portales will be June 10-15 and July 15-20, while the

**World's Finest Water Pump**



**Pargas**  
311  
S. Magnolia  
Woodville  
283-2578

**SHUGART COUPON**  
J.B. Best & Co.  
Monday, Feb. 12



9  
WALLET SIZE  
COLOR PORTRAITS  
99¢  
ASK  
ABOUT OUR  
FREE  
8 x 10  
OFFER  
Extra charge for GROUPS.

Monday, Feb. 12

9 99¢

KING SIZE  
WALLET  
COLOR  
PORTRAITS  
FOR ONLY

Kodak paper. For a Good Look at the Times of Your Life.

GET 1 FREE WALLET WHEN YOU BUY 9 FOR 99¢



NO LIMIT  
Extra Charge for GROUPS

**SHUGART COLOR PHOTOS**  
ASK ABOUT OUR FREE 8 x 10 OFFER

**J.B. Best & Co.**

## Metric System Use Is Topic

WASHINGTON-Representatives of the city of Dallas and Texas business, industry and education will discuss the use of and conversion to the metric system of measurement during a public meeting of the United States Metric Board in Dallas, Texas, February 15-16.

"The purpose of our public meetings is to receive input from all segments of society on its needs, costs, benefits and problems," said Board Chairman Louis Polk. "We feel that in a city as diverse as Dallas, the Board can gather a variety of views, representations."

## Incentive Payments Due

Wool and lamb producers have until January 31, to file for their 1978 incentive payments, according to Harry Stafford, chairperson of the Tyler County Agricultural Stabilization and Conservation (ASC) committee.

"Sales slips from 1978 marketings of shorn wool and unshorn lambs must be presented before they can receive the payments," Mr. Stafford said. Shorn wool prices averaged between 75 and 80 cents per pound in 1978 and the support price was \$1.08 a pound. The rate of payment will be announced about the first of April and payments will be made shortly thereafter.

Support prices for 1979 marketings of shorn wool will be \$1.12 per pound and \$1.943 per pound for mohair. "Pulled wool will continue to be supported at a level comparable to the support price for shorn wool, through payments of unshorn lambs."

As in past years, shorn wool payments for 1979 will be based on a percentage of each producer's returns from sales. The percentage will be that required to raise the national average price received by all producers for shorn wool sold in 1979 up to the support price of \$1.15 a pound.

## Bids To Be Opened

AUSTIN-Bids for the application of a seal coat to some 11 miles of highways throughout the eight county Beaumont District will be opened at the January letting of the State Department of Highways and Public Transportation.

The seal coating is designed to prevent further weather damage to the base material, extend the life of the pavement and provide a safer, more skid-resistant surface.

C.B. Bond of Orange is the department's engineer in charge of the work, under the supervision of Beaumont District Engineer Franklin C. Young.

**Watts Carpet Center**  
All types carpet and linoleum.  
FREE estimates.  
Terry Watts, Owner  
283-2035 Home and Office

**Office Supply Center**  
AB Dick Supplies  
"All your office supply needs"  
Telephone Answering Service \$20/month  
501 W. Bluff 283-5164

**BIRDWELL'S**  
HARDWORKING FEET DESERVE  
HEEL-HUGGING FIT



Full-grain, oil-tanned leather  
Goodyear Welt construction  
Insole adheres to your foot like a footprint  
Tempered steel shank  
Composition sole resists tears and abrasion, exceptional resistance to oil absorption  
Western walking heel

**RED WING**

Russett 8# Bag POTATOES 99¢	Graham Cracker PIE SHELLS 69¢
Del Haven SHORTENING \$1.69 3# Can	Giant CHEER \$1.99
Fresh Green CABBAGE 25¢	Chunky Sirlon BURGER SOUP 89¢
16 Oz. Hy-Top SANDWICH SPREAD 69¢	Our Own Pure Pork SAUSAGE # \$1.69
Our Own Homemade SAUSAGE # \$1.89	Wilson Loose WEINERS # \$1.19
Fresh Ground HAMBURGER # \$1.39	Hormel Pressed HAM # \$1.59
Rib STEW MEAT # \$1.09	Chuck Roast # \$1.19
T-BONE STEAK # \$2.79	
SIRLOIN STEAK # \$2.59	

**Grammer's Grocery**  
1403 W. Bluff Woodville  
283-2520

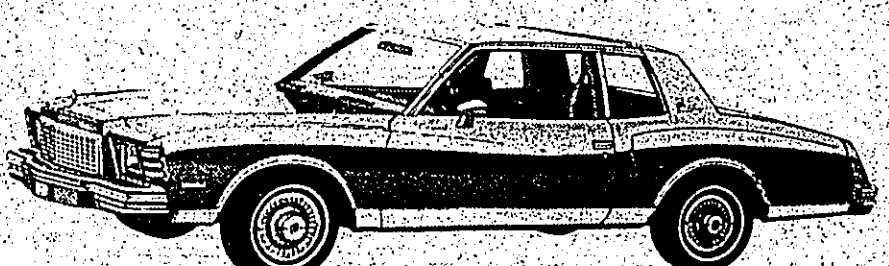
Johnny Harris, Jr.  
403 S. Magnolia  
Woodville, Texas 75070  
Call 283-3004  
(or Warren) 547-2553

"Call me for life insurance."  
Like a good neighbor State Farm is there.  
State Farm Life Insurance Company  
Home Office: Bloomington, Illinois

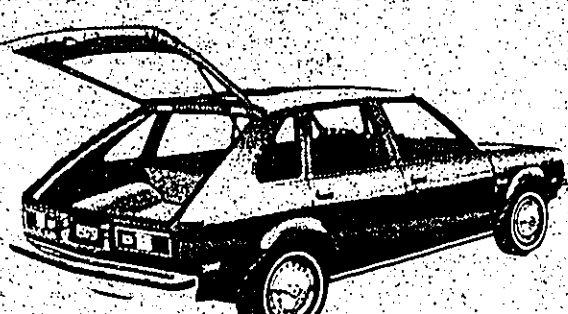
**GM QUALITY SERVICE/PARTS**

Stop in and see the great Chevy values.


It's your time to buy!



Monte Carlo Landau Coupe  
Equipped with V6 engine and a host of other standards. All Chevrolets are equipped with GM-built engines.



Chevette 4-Door Hatchback Sedan  
America's best selling hatchback.  
More standard features than last year and good fuel economy.



Malibu Classic Sport Coupe  
Equipped with V6 engine.  
A lot of car for the money.

Also available - Impala, Caprice and Z28 Camaro.

**Ogden Chevrolet, Inc.**  
P. O. Box 8 Colmesneil, Texas 837-2244  
"KEEP THAT GREAT GM FEELING WITH GENUINE GM PARTS"

As a final touch, all pieces are second coat of wax to a table.

**Talent**  
The Fine Art

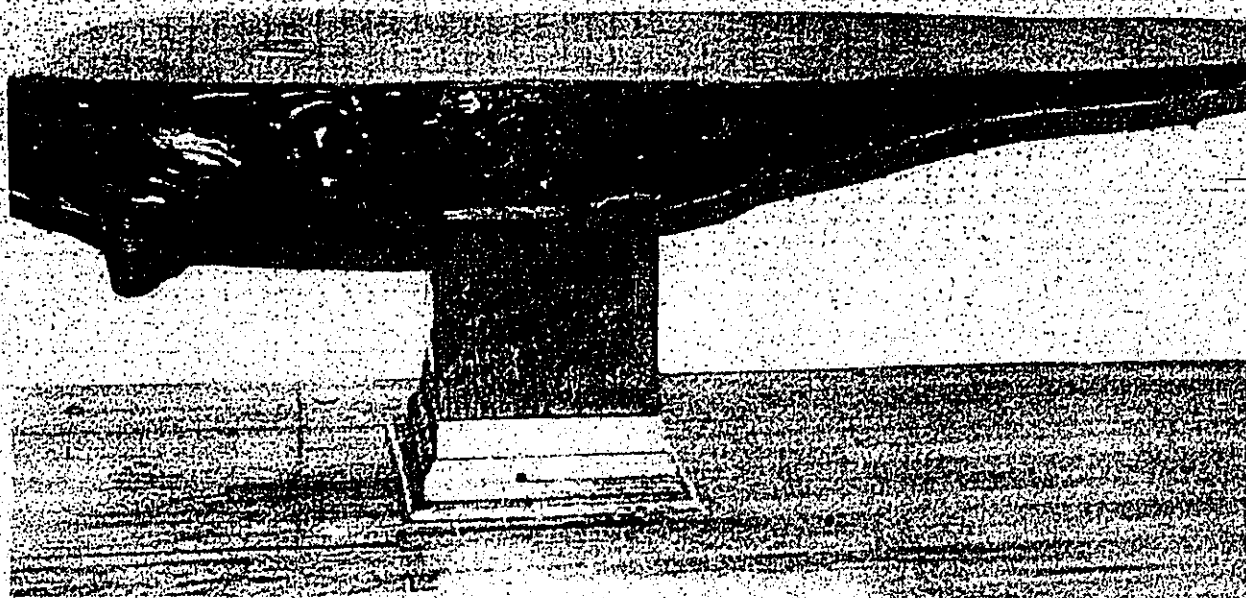
This hutch, characteristic style, reflects his study of art. This piece, as in all of his large, assembles into two sections of fact.

Galloway's work chests





All pieces are sanded, stained, sealed, then waxed. Here Galloway adds a table.



This coffee table, sculpture-like in appearance, is made from an irregular piece of hardwood.

## ent And Technique The Art Of Woodworking

Necessity is the mother of invention it is said. For some, like Mike Galloway, this necessity leads to a house full of beautiful handcrafted furniture, and the discovery of a natural talent.

Galloway has lived in Tyler County with his wife, Sher, for the past five years. He began making furniture just one year ago. With the birth of their first child approaching, says Galloway, they were faced with the dilemma of not only needing a larger home with a nursery, but also of furnishing that home.

High prices and poor quality made buying prohibitive, says Galloway, who began his first project, a dining room table, equipped with no more than a hand saw, plane, power drill and hammer.

Galloway's furniture, all solid wood, is handcrafted from start to finish. His designs, although based on his study of antique furniture, are original. "I prefer not to work off patterns," he says, "because any deviation is considered a mistake. I work out details as I go."

Galloway's work which includes tables, dressers, desks, buffets and chests is done mostly in pine. He uses pine, he says, because it is so readily available in this area.

Although each piece of furniture differs, according to Galloway, his

construction techniques remain the same. All pieces are morticed, or pegged, he says, then glued together. No nails or screws are used. This technique is somewhat like fitting together a jigsaw puzzle, he says, all pieces interlock and there's little room for error.

Galloway finishes each piece with a surface pattern he calls "texturing." This attractive angular design is done by running a plane diagonally across the grain. For a consistent design, "texturing" must be done before each part of the project is fitted together.

This particular technique, a form of distressing, is a distinct characteristic of Galloway's style, which, he explains, is still developing. There is a fine line between distressing and destroying, he says, and notes that it's taken a great deal of experimentation to refine the process.

A textured surface, he says, offers certain advantages, noting that in addition to an attractive appearance, the piece will tolerate normal wear and tear without noticeable marks.

Interior durability is another area which requires special attention, says Galloway, who applies sealer to all inside

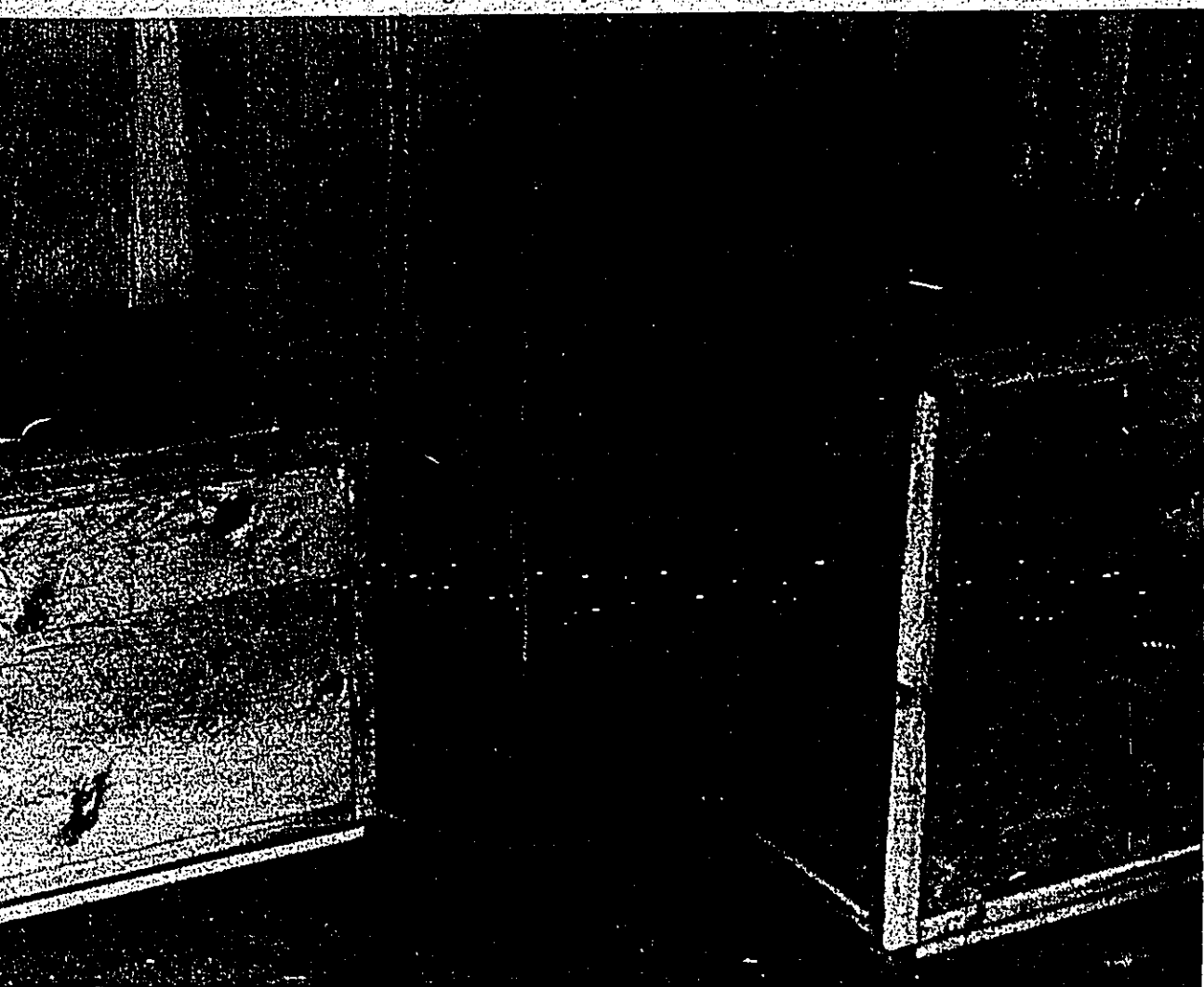
Texturing is done by planing diagonally across the grain. Here Galloway demonstrates the technique.

surfaces. Woods which are not protected in this manner, he explains, are prone to swelling and cracking, especially in a humid region such as Tyler County.

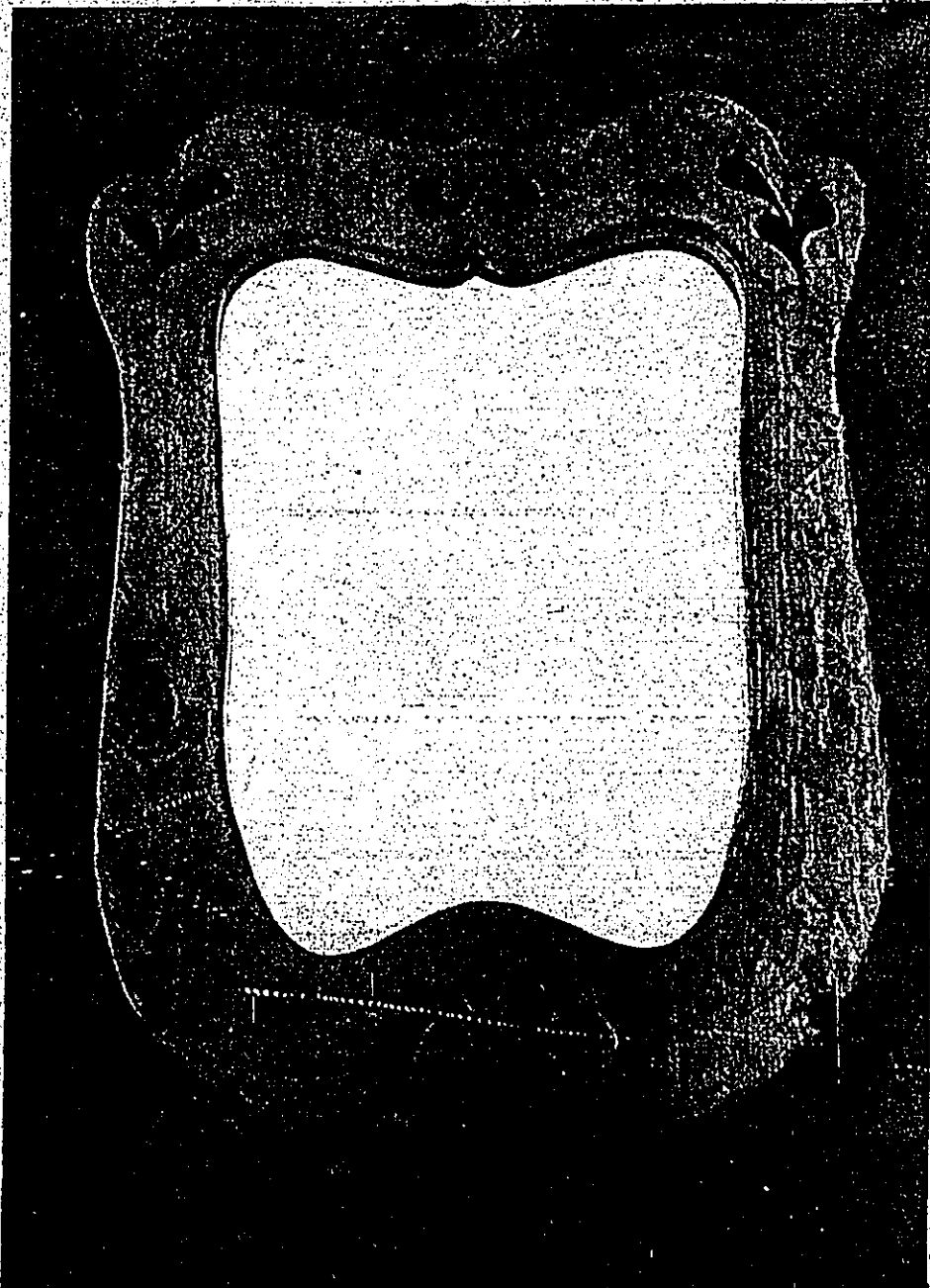
Galloway, who is also skilled as a printer and typographer, says his mastery of the craft is a matter of self-education. "I learn something new from each piece I make," he says. The benefit of having no previous training in woodworking, he says, is that it removes the stigma of, "you can't do it that way" and allows him to use the techniques that work best for him.

Working at an occupation he enjoys doing and can take pride in is important to Galloway. For many people, he says, this type of fulfillment is something that has been lost. An additional gratification of his work, which is done exclusively at home, is spending time with his young son, Christian.

Text And Photos By D. Morey Sitton



Galloway's work includes tables, dressers, chests and hutches. These attractive storage chests are called "blanket



Galloway, who admits having an aversion for square corners, softens his pieces with curved or beveled edges. This mirror with its delicate detail, is characteristic of that style.



# Just What Is A Cold?

**QUESTION:** Just what is a cold?  
**ANSWER:** The common cold is a name given to any of a number of short-lived viral infections of the nose and throat. Sometimes these infections are called other names, which simply tell you what part of the upper respiratory tract is particularly affected. For example, rhinitis affects the nose, pharyngitis the throat, and laryngitis the voice box.

**QUESTION:** How do you catch a cold?  
**ANSWER:** Even though we don't know exactly how or why a number of conditions seem to increase your susceptibility. People seem to catch colds more often in the winter months. Fatigue, chilling, and poor physical conditioning seem to give the virus a better foothold.

**QUESTION:** What causes a cold?  
**ANSWER:** There are many different viruses which cause a cold. A virus is a disease-producing agent so small it fits right through the very fine filters that stop bacteria. Cold-causing viruses are present in great numbers in your nose when you have a cold. They are carried on the droplets you expel when talking, coughing, or sneezing.

**QUESTION:** What's the best way to ward off a cold?  
**ANSWER:** It's really up to the body to resist colds, so the better condition you are in, the better resistance you will have against colds. You should stay in good health, get plenty of rest, practice good nutrition, exercise, and wear the proper clothing for the weather.

**QUESTION:** What are the symptoms?  
**ANSWER:** From two to seven days after the virus takes hold in your body, the symptoms appear. Other people, however, can catch your cold even before the symptoms appear, and this is one reason why colds are so hard to prevent. Within a few hours, your nose gets stuffy and you have a general feeling of discomfort and illness.

**QUESTION:** How long does a cold last?  
**ANSWER:** Within 48 hours, your cold is in full bloom—eyes, nose, throat, and voice hoarse, breathing obstructed, and your sense of taste and smell dulled. You may feel lethargic and aches. It is common to have a moderate headache and you may have some fever, although that's unusual in adults.

**QUESTION:** How do you get your colds?  
**ANSWER:** There are many different viruses which cause a cold. A virus is a disease-producing agent so small it fits right through the very fine filters that stop bacteria. Cold-causing viruses are present in great numbers in your nose when you have a cold. They are carried on the droplets you expel when talking, coughing, or sneezing.

**QUESTION:** What's the best way to ward off a cold?  
**ANSWER:** It's really up to the body to resist colds, so the better condition you are in, the better resistance you will have against colds. You should stay in good health, get plenty of rest, practice good nutrition, exercise, and wear the proper clothing for the weather.

**QUESTION:** What are the symptoms?  
**ANSWER:** From two to seven days after the virus takes hold in your body, the symptoms appear. Other people, however, can catch your cold even before the symptoms appear, and this is one reason why colds are so hard to prevent. Within a few hours, your nose gets stuffy and you have a general feeling of discomfort and illness.

## Early Tax Filers Get Refunds Faster

AUSTIN—Taxpayers who file their federal income tax returns early in the tax filing season will get their refunds sooner than those who file closer to April 15th deadline, according to IRS District Director Robert M. McKeever.

McKeever said that taxpayers who file in January and February, taxpayers who file during those months can expect to receive their refunds in about five weeks, the tax official said. Those who do not file until April

## Teen Driving Safety Competition Finals Soon

Wallace Sheppard of Fort Worth has been named 1979 state champion for Operation Driver Excellence, a youth safe driving competition sponsored by the American Veterans of World War II, Korea and Vietnam (AMVETS) and the nation's Dodge dealers.

Chairman Sheppard states that the State Finals will be held at 1:00 p.m., Saturday, April 28, 1979 at the Lawrence D. Bell High School, 1601 Brown Trail, Hurst, Texas. It would be advisable for Post-winners to appear a little earlier, so as to familiarize themselves with the course, and the Dodge automobile that will be used for the competition.

There will be trophies awarded for the First, Second, and Third place. The First Place winners will also qualify as Texas representative to the 11th annual "Operation D.E." national finals to be held at O'Priddy, near Nashville, Tennessee, in May.

A total of \$10,000 in scholarships and prizes, including a new Dodge automobile, will be awarded there.

Sheppard was named chairman by AMVETS State Commander, Ray Thompson of Houston, who said the youth safe driving program is of the utmost importance, the importance of properly preparing teenagers for the responsibilities that go with driving a car.

To be eligible for the driving program, applicants must be high school students, and must have completed the driver's education course between the period of March 1, 1978 and February 28, 1979 inclusive. Age restrictions are 16 years of age or older, and driver's license at the time of respective State Finals (Post, District, State and National).

State champions win an all-expense paid trip to the national finals for themselves, and their chaperones. During the trip, the winners will undergo rigorous tests of their safe driving knowledge and skills before a national champion is determined.

Students wishing to enter should contact your local AMVETS Post or Wallace Sheppard, State Finals Director, Fort Worth, Texas 76117 or Area code 817/834-3925.

## Chit Chat At WCC

BY DONNA IRVINE  
 The activities have been about as usual. But during the winter months, things slow down. So anyone who would like to come and donate their time, would be appreciated very much.

Monday we played dominoes and forty-two. Playing dominoes were Mattie Sue Williams and Jenny Rawls. The forty-two players were Aurelia Riley, Clara Vinson, Paul Scarborough and Manor Forgybarney.

Tuesday the men had their regular "gab" session with Jessilyn from MHRM. Bertha Austin, Gladys Black, Eula McDaniel, Mattie Sue Williams, and Jenny Rawls. The forty-two players were Aurelia Riley and Shebe Johnson belong to the "Joy" club.

Our sympathy goes to the family of Clenson Syles. Our community was saddened last Friday due to the death of another one of our beloved citizens, Mrs. Lillie

## Ramblin' Round Rockland

BY ALONIA FREELAND  
 Hello, once again, from Rockland, and here is the news from the Rockland community. Burial following the funeral services were held at the Rockland cemetery. Among those from out of town attending the services were Mrs. Lola Shannahan and Mrs. Cecil O'Garden, Mrs. Madeline Collins and Evelyn Lewis of Woodville attended the funeral services. Mrs. Madeline Collins and Evelyn Lewis of Woodville attended the funeral services. Mrs. Madeline Collins and Evelyn Lewis of Woodville attended the funeral services.

## What IRS Form To Use Is First Question

AUSTIN—When you figure out your federal income tax, the first question you should ask even before asking what you owe is, "What form should I use?"

Many people will be able to use Form 1040A this year, which is the shorter form. It should be used by people with simple tax situations. It's printed on one side of a sheet of paper and takes you step-by-step through the tax calculations right down to the signature.

Form 1040 is for people whose circumstances are a little more complex. It starts at the top and takes you through the form in logical progression. The instructions are on the front of the page and all deductions on the back.

The Internal Revenue Service automatically mails you a tax package based on the form you filed last year. But that doesn't mean you must use it. If your circumstances have changed, you may use another form, or if you do not receive a tax package from your stocks, neither may you use any IRS office, Postal Service station and at many banks.

Deal with emotions as they occur by starting up in "sack" is non-productive for the individual and the couple. Frustration, disappointment or sadness will come out into the open, and it is harder for a couple to work through large amounts than small amounts of emotion.

Make time and a commitment for sharing large, small, happy and sad experiences. "Become aware of what one mate does that can influence the behavior of the other, as well as one's interests."

One mate's behavior can and does influence that of the other. For instance, does one

## Keeping Marriage Strong

COLLEGE STATION—Though a happy marriage includes a great deal of rewarding of all human experiences, it requires tolerance, understanding, faithfulness and careful handling.

"Although more than a million Americans sign divorce decrees each year, marriages are worth saving, a family life education specialist, Jerry Reinhardt, said.

While some separations are amicable and some divorces are a greater number of marriages could be re-validated, she continues.

Miss Reinhardt works with the Texas Agricultural Extension Service, The Texas A&M University System.

Just as an adequate knowledge of physical "first aid" is necessary for the treatment of physical ailments, the specialist adds, some suggestions for keeping a marriage strong include:

Decide to make the marriage last. Those who enter marriage thinking they can get a divorce if things don't work out will probably get a divorce.

Devote energies to repairing the marriage instead of "replacing" the marriage partner.

Re-establish a dialogue. A couple must discuss ideas, concerns, problems, hopes, pleasures and plans to maintain a relationship. When the lines of communication between husband and wife become disconnected, they no longer send or receive important messages.

Couples must find intellectual time for them and set aside their own interests.

Some ideas are:

- leisurely walks to discuss events of the day
- regular chats to make

## Hillister News

BY MARY W. G. HAYNES  
 Mrs. Eldon Brisson of Benton, Ark., were here last week visiting Mrs. Eldon Spurlock, to an eye specialist for treatment of a severe injury. We trust that the injury has not impaired his sight.

Mrs. Lou Read and Mrs. Ethel Read were in Woodville Saturday, to be with Mrs. Port Niches; spent a few days at their place here last week. He is slowly recovering from very painful back surgery.

Mrs. Lou Read and Mrs. Ethel Read were in Woodville Saturday, to be with Mrs. Port Niches; spent a few days at their place here last week. He is slowly recovering from very painful back surgery.

## What IRS Form To Use Is First Question

AUSTIN—When you figure out your federal income tax, the first question you should ask even before asking what you owe is, "What form should I use?"

Many people will be able to use Form 1040A this year, which is the shorter form. It should be used by people with simple tax situations. It's printed on one side of a sheet of paper and takes you step-by-step through the tax calculations right down to the signature.

Form 1040 is for people whose circumstances are a little more complex. It starts at the top and takes you through the form in logical progression. The instructions are on the front of the page and all deductions on the back.

The Internal Revenue Service automatically mails you a tax package based on the form you filed last year. But that doesn't mean you must use it. If your circumstances have changed, you may use another form, or if you do not receive a tax package from your stocks, neither may you use any IRS office, Postal Service station and at many banks.

Deal with emotions as they occur by starting up in "sack" is non-productive for the individual and the couple. Frustration, disappointment or sadness will come out into the open, and it is harder for a couple to work through large amounts than small amounts of emotion.

Make time and a commitment for sharing large, small, happy and sad experiences. "Become aware of what one mate does that can influence the behavior of the other, as well as one's interests."

One mate's behavior can and does influence that of the other. For instance, does one

## Health Function Is Fourth

The function of Texas State Government by 1978 and expenditure by 70%.

The Department of Health provides many more services such as immunization, dental health care for indigent children, tuberculosis treatment, and many others.

MHMR was created in 1965 and is the successor agency to the Board for Texas State Hospitals and Special Schools. The department has two primary responsibilities: (1) conserving the mental health of all the state's citizens; and (2) helping mentally retarded Texas achieve their maximum potential.

MHMR supervises the 13 state schools and the Rio Grande State Center for Mental Health and Mental Retardation as well as the state mental hospitals. During 1978, the Texas mental hospitals admitted a total of 20,809 patients and separated 22,408. Improved programs of care and treatment as well as follow-up services for discharged patients made this possible.

The budget of MHMR increased by 39.3% from 1968-69 biennium to the 1978-79 biennium. Appropriations for this 1978-79 biennium were \$79,410,210.

## Warren News

BY BEVIE RILEY  
 The Warren Warriors basketball team, boys and girls will play Kirbyville at Kirbyville, Feb. 6th, and will play Shelbyville the 9th of Feb., with both games beginning at 6:00 p.m.

The Faith Sunday School Class of the First Baptist Church had their regular monthly class meeting at the home of Mr. and Mrs. Luther Moye Tuesday night. Fourteen members were present.

Many residents are ill, some are in different hospitals. Rev. Clarence Read, Mr. Fred Swearingen and Mrs. Mae Best are in the hospital.

The Warren Homeopathic Club met Wednesday in the home of Opal Hall, for their regular monthly meeting.

## Converting Wood Residue Is Seminar Topic

COLLEGE STATION—Converting wood residue to gas to produce energy, generate electrical power, and other related uses will be discussed during a technical meeting sponsored by the Texas Forest Service, Texas Forestry Experiment Station, and the Texas Agricultural Experiment Station.

The seminar, "Technology and Economics of Wood Residue Gasification," will be held at the Texas Forest Service, Texas Forestry Experiment Station, and the Texas Agricultural Experiment Station.

# WHERE YOUR MONEY REALLY ADDS UP

5.25% Regular Passbook Account Equals  
5.39% Annually Compounded Daily

Interest Paid From Date Of Deposit To Date Of Withdrawal

# 8%

8 Year Certificate  
\$1,000 Minimum  
YIELDS 8.33% With Daily Compounding

WAYS TO SAVE!

7 3/4%	6 Year Certificate \$1,000 Minimum YIELDS 8.06% With Daily Compounding
7 1/2%	4 Year Certificate \$1,000 Minimum YIELDS 7.79% With Daily Compounding
6 3/4%	2 1/2 Year Certificate \$1,000 Minimum YIELDS 6.98% With Daily Compounding
6 1/2%	1 Year Certificate \$1,000 Minimum YIELDS 6.72% With Daily Compounding
5 1/4%	Passbook Day In-Day Out Interest YIELDS 5.39% With Daily Compounding With \$5 minimum

A Substantial Interest Penalty Is Required For Early Withdrawal From Certificate Accounts

Member of:  
Federal Savings & Loan Insurance Corporation  
Federal Home Loan Bank System  
United States Savings & Loan League  
Texas Savings & Loan League

Served by:  
Texas State Savings & Loan Department  
Federal Home Loan Bank Board

OPEN MONDAY THRU THURSDAY 9 a.m. to 3:30 p.m. FRIDAY 9 a.m. to 5:30 p.m. Closed on Saturday

**SOUTHEAST TEXAS SAVINGS and Loan Association**  
P.O. Box 936 Woodville, Texas  
Branches Now Open At Livingston 501 W. Church Kountze Hwy. 69 S.

**\$40,000 MAXIMUM INSURANCE FOR EACH DEPOSITOR BY FEDERAL SAVINGS AND LOAN INSURANCE CORP.**  
Serving All Of Southeast Texas  
283-3747

# The Unexpectedness Of El Paso: 1916

"Fanchita Villa" first raids into United States territory in the spring of 1916 brought not only the National Guard but also the attention of representatives of the American press to report the exciting news that a band of battles waged on both sides of the Rio Grande between the Mexicans and the United States Army.

Tracy Hammond Lewis, reporter of the New York Morning Telegraph, reached Texas in July 1916. Arriving during a lull in the fighting, his warlike war correspondent nonetheless returned dispatches to his newspaper. In his own words he turned his attention to the less bloody "inhabitants and the country they lived, and felt it has been worth the journey." After the original publication of his observations in the Telegraph, Lewis published them in his book, "The Unexpectedness of El Paso."

El Paso is a city of surprising proportions, one would wish to find, one should expect after riding through hundreds of miles of sun-scorched cañons, mesquite and rocks, with small quantities of alkali scattered sparingly between to come upon a city in which there lived only a few who were blind, halt or without interest in life and what it affected.

It doesn't take many miles of this sort of country to cause one to be startled when the factories, smelters, and other buildings burst out from the plains just outside of El Paso. The shock is made somewhat greater when one actually finds himself in the middle of a city after leaving the train. Seven-story buildings are common enough; so an El Pasoan can almost look indifferent when he points them out. Its population is 70,000.

By judicious inquiry I ascertained that the people who have settled in this place are for the most part, in spite of my previous fears, in full possession of their senses and could go to other places if they cared to do so. El Paso is the commercial, mining and agricultural center of this part of the country. Along about 1840, an expedition of Indians came to me; white men began to outnumber the Indians; and I suggest that they move else

There are many American refugees in town, most of them in their wildest dream business, but aside from this there is very little of what the hotel man calls a transient trade, and business is not as good as it usually is at this time of year, as all possible attempts are being made by the citizenry to make the honest soldier recompense them for the misfortune which war has brought upon them. The Mexican atrocities, militia in particular will doubtless soon be hearing loud cries of "The Wigwaggers!"

El Paso rejoices, for a soldier's money—when he has "his hand" for its inability to stay in his pocket. "The town for many years has been prosperous, but it has now reached the ultra-wealthy stage. It is catching the shakels as they fall. There is every evidence that it will be many months before the troops are recalled, since the chances for any conflict with Mexico seem extremely remote, though the danger constantly threatens."

The only thing that up to the time I visited there in July had shadowed the town, was the fact that many of the militia had been killed. El Paso is a city of extremely high prices—one that would make the heart blush for its amateurishness.

The seven-motion picture shows are "turning them away," both in the daytime and at night, for, in spite of the heat, the picture promoters manage to keep their theatres cool.

The saloons foreshow such days as these, although it is seldom that one finds a drunk soldier in the streets. El Paso is not dry—far from it—except after 9:30 at night and on Sunday. If an overpowered desire for demon rum still attacks at one of these times, it does not require an unusual degree of ingenuity to obtain it. It is possible for a nominal sum, to join any one of several drinking clubs such as "The Cactus" or "The Wigwaggers" and quench your thirst thoroughly as your bankroll will permit.

At some stands more than 2,000 postal cards depicting all the grossnesses of the Mexican atrocities (few others are popular) are sold in a day, and in the local dealers' was recently seen pricing automobiles in a store room.

El Paso is a city of extremely high prices—one that would make the heart blush for its amateurishness.

The seven-motion picture shows are "turning them away," both in the daytime and at night, for, in spite of the heat, the picture promoters manage to keep their theatres cool.

## Bureau Urges Congress To protect Ag Department

WACO—The Texas Farm Bureau is urging Congress to create a new Department of Agriculture, and to transfer to it the functions of the U.S. Department of Agriculture.

In a letter to the 24 Texas Representatives and two Senators, TFB President Chalmers H. Adams and the Bureau urged that the Texas Farm Bureau be transferred to the new Department of Agriculture.

Chalmers referred to proposals by President Carter to create a new Department of Natural Resources and a new Department of the Environment, and urged that the Texas Farm Bureau be transferred to the new Department of Agriculture.

Chalmers asked the Texas representatives to urge Congress to create a new Department of Agriculture, and to transfer to it the functions of the U.S. Department of Agriculture.

## Warren News

BY BEVIE RILEY  
 The Warren Warriors basketball team, boys and girls will play Kirbyville at Kirbyville, Feb. 6th, and will play Shelbyville the 9th of Feb., with both games beginning at 6:00 p.m.

The Faith Sunday School Class of the First Baptist Church had their regular monthly class meeting at the home of Mr. and Mrs. Luther Moye Tuesday night. Fourteen members were present.

Many residents are ill, some are in different hospitals. Rev. Clarence Read, Mr. Fred Swearingen and Mrs. Mae Best are in the hospital.

The Warren Homeopathic Club met Wednesday in the home of Opal Hall, for their regular monthly meeting.

## Converting Wood Residue Is Seminar Topic

COLLEGE STATION—Converting wood residue to gas to produce energy, generate electrical power, and other related uses will be discussed during a technical meeting sponsored by the Texas Forest Service, Texas Forestry Experiment Station, and the Texas Agricultural Experiment Station.

The seminar, "Technology and Economics of Wood Residue Gasification," will be held at the Texas Forest Service, Texas Forestry Experiment Station, and the Texas Agricultural Experiment Station.

## Health Function Is Fourth

The function of Texas State Government by 1978 and expenditure by 70%.

The Department of Health provides many more services such as immunization, dental health care for indigent children, tuberculosis treatment, and many others.

MHMR was created in 1965 and is the successor agency to the Board for Texas State Hospitals and Special Schools. The department has two primary responsibilities: (1) conserving the mental health of all the state's citizens; and (2) helping mentally retarded Texas achieve their maximum potential.

MHMR supervises the 13 state schools and the Rio Grande State Center for Mental Health and Mental Retardation as well as the state mental hospitals. During 1978, the Texas mental hospitals admitted a total of 20,809 patients and separated 22,408. Improved programs of care and treatment as well as follow-up services for discharged patients made this possible.

The budget of MHMR increased by 39.3% from 1968-69 biennium to the 1978-79 biennium. Appropriations for this 1978-79 biennium were \$79,410,210.

## Warren News

BY BEVIE RILEY  
 The Warren Warriors basketball team, boys and girls will play Kirbyville at Kirbyville, Feb. 6th, and will play Shelbyville the 9th of Feb., with both games beginning at 6:00 p.m.

The Faith Sunday School Class of the First Baptist Church had their regular monthly class meeting at the home of Mr. and Mrs. Luther Moye Tuesday night. Fourteen members were present.

Many residents are ill, some are in different hospitals. Rev. Clarence Read, Mr. Fred Swearingen and Mrs. Mae Best are in the hospital.

The Warren Homeopathic Club met Wednesday in the home of Opal Hall, for their regular monthly meeting.

## Converting Wood Residue Is Seminar Topic

COLLEGE STATION—Converting wood residue to gas to produce energy, generate electrical power, and other related uses will be discussed during a technical meeting sponsored by the Texas Forest Service, Texas Forestry Experiment Station, and the Texas Agricultural Experiment Station.

The seminar, "Technology and Economics of Wood Residue Gasification," will be held at the Texas Forest Service, Texas Forestry Experiment Station, and the Texas Agricultural Experiment Station.

January

# Clearance

Super savings on  
**TIRES**  
G78-15  
4 Ply Whitewall **\$29.95** & tax

**BFGoodrich** Other sizes at low, low prices

Screwdriver Set 7 piece **\$2.25**

A/C and Champion Spark Plugs

Resistor **\$1.02**

Standard **86¢**

Our most popular selling  
**Battery**  
12 volt 36 mo.  
**\$29.95**

Front End Alignment  
**\$14.50**

Backed by:  
Harold Ogden, Ser. Mgr.  
• Top notch mechanics  
• Courteous service  
• Reasonable cost  
• Fast, accurate, by the book work  
• Large shop

# Complete Auto Service Center

"We do it all!"

# JO-BE EQUIPMENT

1110 S. Magnolia 283-2541







# IT'S NOT JUST BINGO...

# IT'S SURE THINGO

AT...

**Brookshire Bros.**  
THE BEST FOR LESS

## EVERYBODY CAN WIN!

WIN UP TO **\$1,000** ON ANY GAME

BEGINS JAN. 29, 1979

OVER **\$87,000** IN CASH PRIZES AVAILABLE

OVER **250,000** BONUS PRIZES AVAILABLE

PLAY **Brookshire Bros.** EVERYBODY CAN WIN!

### SURE THINGO WIN UP TO \$1000 ON ANY GAME

WIN \$1000	WIN \$100	WIN \$20
9351 986 977 921	824 811 878 831	790 788 745 FREE
904 913 FREE 937	865 834 812 FREE	FREE 701 727 739
FREE 986 910 952	803 FREE 849 850	766 771 708 732
961 923 979 944	846 897 809 883	719 FREE 781 774
WIN \$10	WIN \$5	WIN \$1
629 605 691 FREE	556 507 FREE 518	402 FREE 487 472
FREE 682 655 676	548 FREE 526 533	FREE 414 489 436
650 673 617 638	FREE 564 565 560	451 406 FREE 467
622 FREE 684 653	592 FREE 541 515	FREE 442 475 493

**BONUS PRIZES** See all signs in store

EVERYBODY CAN WIN AT...  
You win "Bonus Prize" 227301  
WITH 14 BONUS PRIZE PIECES IN PLACE

ODDS CHART EFFECTIVE JANUARY 29, 1979

ODDS	NUMBER OF TICKETS	NUMBER OF WINNERS	AMOUNT
\$1000	100	1	\$1000
\$100	1000	10	\$100
\$20	10000	100	\$20
\$10	100000	1000	\$10
\$5	1000000	10000	\$5
\$1	10000000	100000	\$1
TOTALS	11111111	111111	\$111111

TOTAL VALUE OF CASH PRIZES — \$87,500

OFFICIAL RULES (Series BB-3)

1. TO PARTICIPATE... 2. SPECIAL... 3. BONUS PRIZES... 4. OTHER RULES...

PLAY **Brookshire Bros.** EVERYBODY CAN WIN ONE OF 8 BONUS PRIZES!!!

## sure THINGO

WIN \$1000

OR \$100 • \$20 • \$10 • \$5 • \$1

By completing a

- Horizontal Row
- Vertical Row
- Diagonal Row

15 WAYS TO WIN \$1000

ODDS CHART EFFECTIVE JANUARY 29, 1979

TOTAL VALUE OF CASH PRIZES — \$87,500

WIN \$1000 BY COMPLETING A **GOLDEN DIAGONAL** ON ANY OF 6 GAMES

ADULTS ONLY. MUST BE 18 YEARS OR OLDER TO PLAY.

We Give You More Good Eatin' Meat for Less!

**ROEGELEIN FRESH PORK ROAST** (PICNIC CUT) **79¢**

**ROEGELEIN FRESH PORK PICNIC** **89¢**

**BROOKSHIRE VAC PAC BACON** SLAB SLICED LB. **\$1.59**

**ROEGELEIN FRESH PORK HOCKS** LB. **89¢**

**BATH ASSORTED LUNCH MEATS** 7 VARIETIES 6 OZ. **69¢**

**BROOKSHIRE BNL'S HAMS** 3-5 LBS. **\$2.49**

**100 FREE STAMPS** WITH PURCHASE OF ANY 3 LBS. OR MORE **BEEF CHUCK ROAST**

**KRAFT VELVEETA** LB. **\$1.59**

**OSCAR MAYER REG. OR BEEF BOLOGNA** 12 OZ. **\$1.39**

**OSCAR MAYER FRESH PORK LINK SAUSAGE** LB. **\$2.09**

Shop Brookshire Brothers and Enjoy the Savings.

**MIRACLE WHIP** QUART JAR **88¢**

**TIDE** POWDERED DETERGENT 10' OFF LABEL **119**

**GOLD MEDAL FLOUR** 5 LB. BAG **69¢**

**HUNTS TOMATO KETCHUP** QUART BOTTLE **79¢**

**HY-TOP DIPS OR SOUR CREAM** 4 OZ. CTNS. **43¢**

**HY-TOP BUTTER** 1/2 LB. **59¢**

**HY-TOP GLAZE SOLID** 6 OZ. **49¢**

**HY-TOP BLUE LAKE CUT GREEN BEANS** 3 CANS **\$1.00**

**HY-TOP GARDEN SWEET PEAS** 3 CANS **\$1.00**

**HY-TOP GOLDEN CORN** 3 CANS **\$1.00**

**HY-TOP DRY DOG FOOD** 25 LB. BAG **4.99**

**Brookshire Bros. Frozen Food Specials**

**HY-TOP FRENCH FRIES** 2 LB. BAG **69¢**

**HY-TOP WHIPPED DESSERT TOPPING** 13 OZ. SIZE **69¢**

**KITCHEN TREAT MEAT PIES** CHICKEN TURKEY BEEF 6 OZ. **21¢**

**BANQUET MAN PLEASER DINNERS** 3 KINDS EA. **\$1.29**

**GRAMHAM CRACKER PIE SHELLS** PKG. **89¢**

Quality Produce... Fresh from the Farm!

**WASHINGTON RED DELICIOUS APPLES** LB. **39¢**

**TexasSweet Oranges** OR **TexasSweet Grapfruit** 10 FOR **\$1.00**

**FRESH GREEN CABBAGE** LB. **19¢**

**FRESH CAULIFLOWER** EA. **69¢**

**YAMS** LB. **39¢**

**NEW CROP WHITE ONIONS** LB. **29¢**

**GOLDEN RISE BANANAS** 4 **\$1.00**

**FRESH PINEAPPLES** 49¢

**POTATOES** 4 **\$1.00**

PRICES GOOD Jan. 31-Feb. 6, 1979

QUANTITY RIGHTS RESERVED

**Brookshire Bros.** THE BEST FOR LESS

50 EXTRA STAMPS WITH THIS COUPON AND PURCHASE OF \$5.00 OR MORE (EXCLUDING CIGARETTES)

100 EXTRA STAMPS WITH THIS COUPON AND PURCHASE OF \$10.00 OR MORE (EXCLUDING CIGARETTES)

DOUBLE TUESDAY

STORE 7:30 a.m. till 8 p.m. For Your Shopping Convenience







### AC Short Courses

Angelina College, Community Services Division is offering several new short courses this spring semester as a part of the non-credit program. These new courses will be Effective Gobetting, Conversational Spanish for Real Estate Salesmen, Management by Objectives, Home Buying Seminar, Personal Effectiveness Training, and Wild Flowers of East Texas.

Effective Gobetting begins February 26 and meets from 8:30 to 9:30 p.m. for 5 consecutive Monday nights. Mr. Ross Thomas, a travel consultant with Angelina Travel Service in Lufkin will teach the course.

According to Thomas the purpose of the course is to help travelers from the Lufkin area make the best use of their travel time and resources. The course will acquaint the prospective traveler with the myriad alternatives available to him as he uses his favorite travel courses.

Conversational Spanish for Real Estate Salesmen, an 8-week course, begins February 26 meeting Tuesday nights from 8:30 to 9:30 p.m. The purpose of the course is to develop an increasing need expressed by businessmen in the local real estate industry. The course will give students the ability to communicate with and transact real estate business with Spanish-speaking clients.

The course will consist of a combination of a lecture and a demonstration of a great deal of administrative practice and information so as to make the student a real estate salesperson with skills and knowledge to a self-starting business.

Management by Objectives begins February 14 meeting Wednesday night for 4 weeks. The objective of the course is to present an overview of MBO as a system of managerial leadership and its effectiveness in a business organization. Content will include MBO principles, implementing the system in a business organization and comparing the system during the transition stages. Cost for the course is \$20.00.

Personal Effectiveness Training begins Tuesday, February 27 and will meet from 6:30 to 8:30 p.m. for 10 weeks. Instructor for the course is Dr. Joe Kartve, Director of Special Programs, at the Lufkin State School.

According to Dr. Kartve many people go through life with problems that prevent them from fully satisfying their potentials. Examples of these problems are refusing invitations from friends, giving compliments, confronting others with something they are doing which negatively influences us, caring on social conversations, dealing with one's children and many others.

Dr. Kartve believes that personal effectiveness training is one technique which has been found to be highly effective in teaching individuals to more effectively cope with these types of interpersonal situations.

The goals of the course will be to teach participants assertive behavior skills which will facilitate the formation and maintenance of close interpersonal relationships. Cost for the 10 week course is \$30.00.

Wild Flowers of East Texas begins March 17 meeting from 9 a.m. to 12 noon for four Saturday mornings. The course will not only cover wild flowers but also poisonous, insectivorous, edible and rare or unique plants of the East Texas area.

M.F. "Buddy" Wichman, a retired soil conservation agent with 30 plus years of experience will be the group leader.

## BIG STAR

**HYDE PARK FACIAL TISSUE**  
200 ct **2/89¢**

## BIG STAR

**HYDE PARK TOWELS**  
roll **2/89¢**

## HYDE PARK DETERGENT

49 oz **99¢**

## NORTHERN BATHROOM TISSUE

4 roll **89¢**

## SAV-SUM DISH DETERGENT

32 oz **59¢**

## HYDE PARK BLEACH

gal. **69¢**

## PRODUCE

LARGE HEAD LETTUCE **59¢**  
VINE RIPE TOMATOES **69¢**  
BELL PEPPERS 2 PEPPERS **39¢**  
CUCUMBERS 2 FOR **39¢**  
YELLOW SWEET CORN **3/39¢**  
HYDE PARK PEANUT BUTTER **79¢**

## FROZEN

HYDE PARK PIE **99¢**  
HYDE PARK WHIPPED TOPPING **59¢**  
HYDE PARK PIZZA **89¢**  
CARNATION SHOESTRING POTATOES **3/89¢**

**We're Home Owned And Home Operated**

**GLADIOLA FLOUR 69¢**  
5 lb.

# MILLERS

## USDA FRYERS

**49¢**  
lb.

## FRYER PARTS

**\$1.09**  
lb.

**CUT UP 55¢**  
**BREAST 99¢**

**LEGS \$1.09**  
**THIGHS 99¢**

## LIVERS 89¢

lb.

## GIZZARDS 89¢

lb.

## OUR SPECIAL BACON \$1.19

12 oz.

## HYDE PARK BLACK PEPPER 69¢

4 oz.

## SWIFT BEEF STEW 99¢

24 oz.

## HYDE PARK FRUIT COCKTAIL 49¢

15 oz.

## SWIFT W/BEANS CHILI 55¢

15 oz.

## CONTADINA TOMATO SAUCE 5/99¢

8 oz.

## SWIFT NO BEANS CHILI 69¢

15 oz.

## CONTADINA ROUND TOMATOES 3/99¢

3 oz.

## SWIFT POTTED MEATS 5/99¢

3 oz.

## DAIRY

## HYDE PARK MARGARINE 39¢

9 in.

## KRAFT SQUEEZE PARKAY 79¢

1 lb.

Ballard BISCUITS **4/69¢**  
7 oz.

## KRAFT MIRACLE WHIP 69¢

16 oz.

## KRAFT CRACKER BARREL CHEESE \$1.19

10 oz sticks (mild-mellow)

# BIG STAR

## SMOKED PICNIC

lb **79¢**

## RATH HONEY LOAF 69¢

6 oz.

## FRESH GROUND BEEF \$1.49

lb.

## BACON ENDS & PIECES \$1.89

3 lb.

## MAPLE RIVER BREAKFAST ROLL 69¢

12 oz.

## ECONOMY BACON 79¢

lb.

## BEEF CUTLETS \$1.99

lb.

## TURKEY NECKS 39¢

lb.

## BONELESS STEW MEAT \$1.79

lb.

## BACK BONES 49¢

lb.

## SLICED SMOKED PICNIC 89¢

lb.

## HYDE PARK TOASTER POP UPS 49¢

11 oz.

## CONTADINA TOMATO PASTE 4/99¢

6 oz.

## HYDE PARK RIDE PARK CUT 3/89¢

15 oz.

## GREEN BEANS 3/89¢

15 oz.

## SWIFT VIENNA SAUSAGE 2/79¢

5 oz.

## FRISKIES 25 lb DOG FOOD \$3.99

25 lb.

## FRISKIES CAN DOG FOOD 3/89¢

25 oz.

## FRISKIES CAN DOG FOOD 4/89¢

15 oz.

## FRISKIES CANNED DOG FOOD DINNERS 4/89¢

14 oz.

## FOLGERS INSTANT COFFEE \$2.99

10 oz.

With One Saver Book

## HYDE PARK SUGAR 69¢

5 lb. bag

WITH ONE SAVER BOOK

# BIG STAR

## BILLY BUMSTEAD DIDN'T HAVE CARD PUNCHED

## JACKPOT NOW \$700.00

## KRAFT DELUXE MACARONI & CHEESE 79¢

14 oz.

## CARNATION CHOCOLATE COCOA MIX 99¢

12 oz.

## HYDE PARK WHOLE OR HAMBURGER DILL PICKLES 69¢

qt.

## HYDE PARK YAMS PEAS 59¢

29 oz.

3/89¢ 15 oz.

## SAVERBOOKS

## CARNATION COFFEE MATE 59¢

16 oz.

With One Saver Book

## FOLGERS COFFEE \$1.69

lb.

With One Saver Book

**\$730,000**  
IN CASH PRIZES AVAILABLE

**WIN UP TO \$1000**  
ON ANY GAME

**EASY TO PLAY**  
**EASY TO WIN**

**BINGO WINNERS**

W.C. Mayfield  
W.E. Wiltzton  
R.L. Bates  
Stereos Barlow  
Johns Wilson  
J. A. Best  
Margaret Cahn

Mrs. Derryberry  
Mable Cummings  
Ruby Stewart  
Verna Sunfall  
Walter Landry  
Lucy Duffie  
Dorothy Kiel  
Shirley Strasser  
Gloria Carr

## Records Fall

Records continue to fall as the 83rd annual Southwestern Exposition and Fair Stock Show nears its opening day. Wednesday, Jan. 24, the show will end on Sunday, Feb. 4, with all activities scheduled on Carter Square in Fort Worth.

A record of 14,900 head of livestock is expected to be exhibited at the exposition and the 22 performances of the World's Original Indoor Rodeo will feature contests for a record \$40,000 cowboy prize money. Livestock premium money totals almost \$200,000.

"We are pleased to see the projected increases in livestock show and rodeo entries," said W.R. Watt, Jr., Stock Show president. "This continues a trend of recent years where we have been fortunate in establishing a gain from year to year."

Special guest entertainment at each rodeo performance will be Rex Allen Jr., recording star for Warner Brothers, and his band, the Country Travellers. Tickets are on sale daily, including Sunday, from 9 a.m. until 9 p.m. in the Will Rogers Coliseum lobby ticket office. Admission is \$5, which includes \$1 grounds admission.

"What said good tickets remain for many of the rodeo entries," Watt said. "Performances are set at 8 p.m. Jan. 24 through Feb. 4, 10 a.m. Saturday, Jan. 27, and 2 p.m. Jan. 27 through Feb. 4. The two Friday nights, two Saturday matinees and nights and the final Sunday night are sold out."

All the reigning world champion cowboys are among the rodeo entries," Watt said. Leading the cowboy list is Tom Ferguson, all-around champion whose biggest win last year was over \$12,000 at the Fort Worth Rodeo. He competes in calf roping and steer wrestling and finished the 1978 rodeo year with over \$84,000 in prize money.

Saddle horse champion Joe Marvel, bareback champion Bruce Ford, bull riding king Don Gray, calf-roping champion Roy Cooper and steer-roping champion Byron Walker, as well as Der Packer, PKA Rodeo of the Year are also on the entry list.

Neal Gay of Mesquite will serve as rodeo production manager with eight rodeo stock contractors providing rodeo stock this year. Mrs. Ellen Backstrom of Wickenburg, Ariz., will report as rodeo secretary.

Schedule to do the chore of protecting the bull riding contestants are four top rodeo clowns. Returning will be Tommy Lucia of Weatherford, barrel man while Miles Hare of Gordon, Neb., and Skipper Voss of Crosby will be arena clowns. New in the group will be Bob Romer of Canyon.

The livestock show entry count posted more than 9,300 cattle, sheep and swine; 3,800 rabbits, pigeons and poultry entry.

A sizeable gain was also posted in the pen division where commercial Hereford and Angus females will show in pens of 20 and 15 head, respectively, prior to auction. Watt said the buying opportunities in the commercial sales are outstanding, with buyers having a chance to choose from top replacement heifers from some of the best known herds in the Southwest.

New departments this year brought 75 entries of Devon breeding cattle and 93 entries for the National Pinagater cattle show. Also, some 85 entries are listed in the Texas Longhorn Cattle sale group.

Watt expressed confidence for a well-attended junior division program, saying that the separation of the junior heifer and steer shows and the rearrangement of show times for junior sheep, lambs and hares should be more convenient for young exhibitors and present a better show to the public.

"Since our show was founded in 1896, show officials have encouraged our young exhibitors through education programs, higher premiums and more competition with a broader schedule," said president-manager Watt.

The annual Stock Show Parade is scheduled Friday, Jan. 26 at 2 p.m. through downtown Fort Worth. Entries are welcome to participate. The Parade does not allow motorized vehicles, in keeping with the western heritage of the Stock Show.







## "Looking Back"



Outgoing Chamber President

Bertis Best

In serving as president of the Tyler County Chamber of Commerce for 1978, I have been made more aware of the fact that a very large number of people are being drawn to Tyler County. These are the tourists looking for something new or old or for a good recreation location or a place to retire in a few years.

The Chamber of Commerce has been actively engaged the past year to make the tourist market aware of Tyler County. We have served as host to a group of 23 travel writers sponsored by the Texas Tourist Development Agency and another group of 10 foreign travel writers sponsored by the United States Travel Service. These journalists have returned to their respective homes and jobs and produced numerous articles about East Texas and Tyler County. I feel this will increase our tourist traffic in the years to come.

I hope that all the people of Tyler County will recognize that the tourist market is wide open to us. If we will work together to promote this market, we can see our county grow to new heights. This will require the work of many people, not just a few.

If we work together through the Chamber, whose purpose is to promote the well-being and development of commerce, industry, tourism, agriculture, civic interest and good citizenship, we will improve our county. As I stop to think, there is no better place for people to live, work, and rear their children than Tyler County. If you feel this way too, you should be proud to sell others on the greatness of Tyler County.

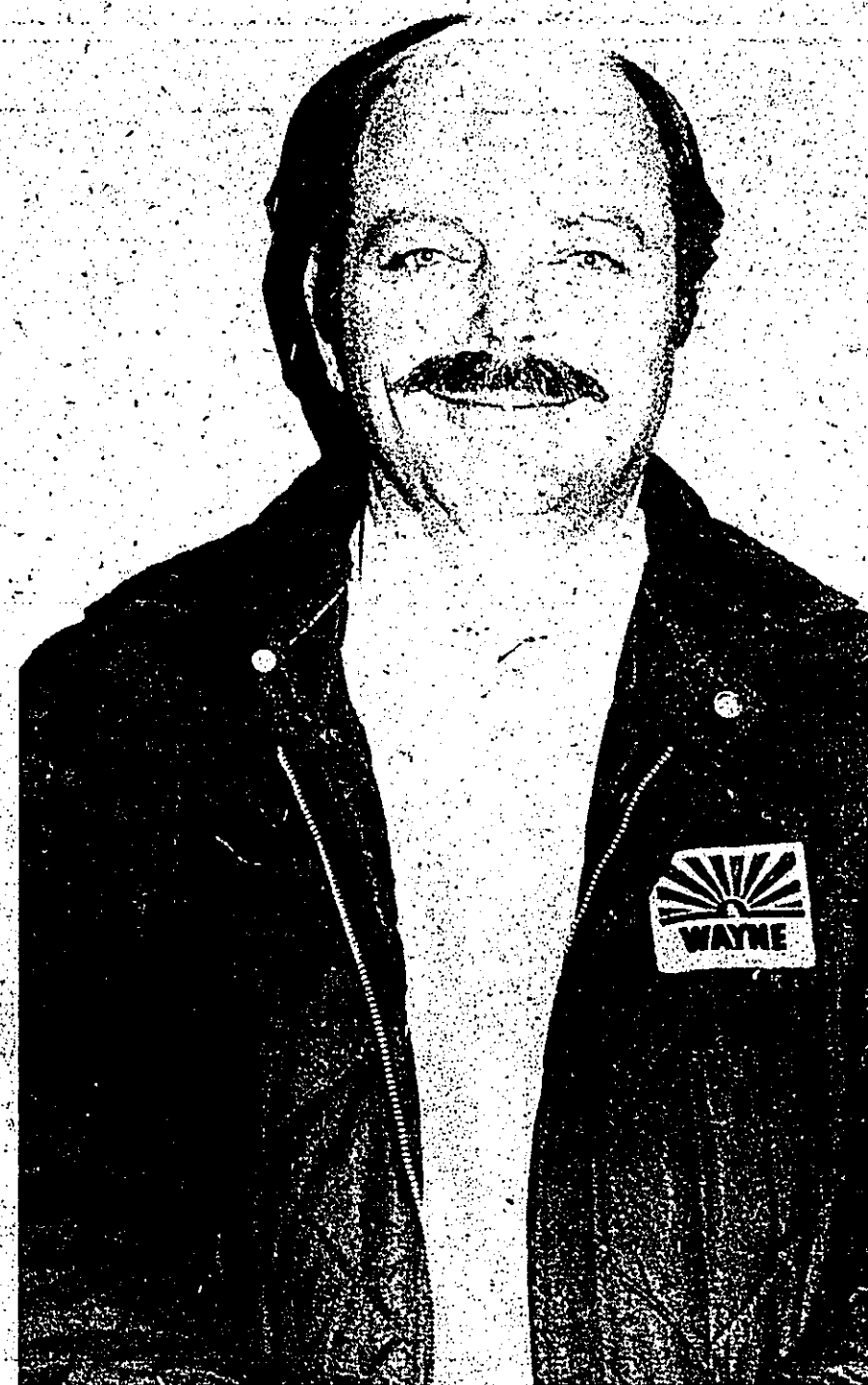
The Chamber of Commerce is constantly receiving inquiries about our area. Many of these are forwarded to the applicable entity that governs the direct area of the inquiry, such as the Tyler County Industrial Corporation, Tyler County Hospital Administrator, etc. Some of these are pursued with great vigor, as was Livingston Industrial Products which opened their new facility on March 18, 1978. This is evidence of the results that can be obtained when several people representing numerous different bodies all unite together for a common goal.

In my initial address a year ago, I defined PEOPLE as Priorities, Examination, Optimism, Pledging, Labor and Energy. The Chamber of Commerce is still in need to much more response from Tyler Countians who are willing to become CHAMBER PEOPLE, PLEDGED TO CAUSE THINGS TO HAPPEN.

Serving as your president of our Tyler County Chamber of Commerce for the past year has been a privilege and an honor. I want to say "thank you" to each of you who lent your support to the Chamber in 1978. We are often caught "Looking Back" at what might have been done but I hope each of you will join our new president and me in "Looking Ahead" to what can be done.

Sincerely,  
Bertis W. Best

## "The Future For Us Is Now"



Incoming Chamber President

Bud Byram

I would like to thank the voting body of the Chamber of Commerce for their vote of confidence in asking myself to head this outstanding organization for this year. I only hope that I can meet their expectations and follow in the manner of leadership that has been demonstrated so well in the past. With such a resource of individuals in our community, I feel honored just to be considered.

We live in such an interesting area. The potential for growth in our county has no bounds, and I feel this growth has just started. We have all the essential requirements, workforce, natural resources and energies, to satisfy most any size industry or business. All we need to do is provide the effort to make this opportunity happen.

This year, along with our continued efforts in increasing our tourism enterprises, I would like to see us make a concerted effort in the acquisition of manufacturing and fabricating type industries. Outstanding results have already been made and a committee of endless depth and talent has been selected to further these efforts. I feel that a countywide membership campaign should be made. An outstanding group of personalities have been called into service to coordinate this drive which I know will be totally successful. Also, with the intent of making our chamber a truly "county" organization, I have initiated the Tyler County Retail Merchants Council. These appointed individuals will be a point-of-source and communication for all municipalities and townships in our county. It is my hope that this council will generate a purpose of oneness throughout the entire area and perpetuate itself for many years to come.

To make it work will require coordination, understanding and an effort from every concerned individual. It cannot be done alone. So much has been written about the need for unity to accomplish a purpose and in our situation a no greater truth can be emphasized. Our accomplishments will be directly proportional to what we want. So let this year be a year that we can look back upon and say I was glad to be there.

Thanks  
Bud Byram



# Hurst Is Banquet Speaker

Featured speaker for the Chamber of Commerce Annual Banquet is O. Ray Hurst, CAE, President of the Texas Hospital Association from Austin.

Hurst has held the position of chief executive officer since 1956. A graduate of Tenaha High School, he received his BBA with Honors from Stephen F. Austin University in Nacogdoches, Texas, in 1949.

He is extremely active in the American Hospital Association. In December 1976 he completed serving a three-year term as Chairman of the Council on Legislation and is currently serving a three-year term on the Council on Allied Associations (1978-80). A member of the American Society of Association Executives, he has been designated a Certified Association Executive (CAE) and has served as Vice President and also a Director of that

organization. He has also served as Secretary-Treasurer of the Texas Society of Association Executives, and in June of 1978 was elected to serve as Vice President. In addition to numerous other professional and civic activities, he has been a member of the United States Chamber of Commerce's Association Committee of 100 since 1972, and in December 1977 completed seven years of service as a member of the Board of Directors of the

Citizens National Bank of Austin.

He served several state appointments by governors Price Daniel, John Connally, Preston Smith and Delph Briscoe and has participated in national invitational conferences under Presidents Eisenhower and Johnson, as well as invitational association executives briefings by President Ford and Carter.

As an indication of the high esteem in which he is held by his peers in the



O. Ray Hurst

health care and association management fields, he was named Health Association Executive of the Year 1970 by HOSPITAL MANAGEMENT magazine and in 1974 was presented the Key Award for Outstanding State Association Executive by the American Society of Association Executives. In October 1977, he was presented a Management Achievement Grand Award by ASAE in recognition of the Texas Hospital Association's Statewide Hospital Productivity Center, a project to contain costs and increase productivity in hospitals.

Hurst and his wife Eleanor are members of the Highland Park Baptist Church in Austin and have a daughter and son, Raelynn and Miles.

## "Here's what the well-read executive is reading today."

It's the new "Bell Business Catalog," and it belongs at the top of your reading list. It's got all the latest in business equipment, the very latest in business communications for the modern business.

This 44-page Bell Business Catalog shows you the most up-to-date equipment and services available. And how we can design a system that makes it really pay for the profitability of your company.

Once you've looked through our catalog, you'll want to keep it as a future reference for the planned growth and expansion of your company.

It's easy to get your FREE copy (no copies).

Just fill out and send us the coupon in this ad.

Or call us today at (713)835-7414 to collect.

Father time, we'll rush you "The Bell Business Catalog."

If you want to stay on top in business, it pays to stay on top of what's new in business communications.



YES, I want to keep on top of the latest in business communications.

SEND ME \_\_\_\_\_ copies of "The Bell Business Catalog."

NAME \_\_\_\_\_

COMPANY \_\_\_\_\_

ADDRESS \_\_\_\_\_ CITY \_\_\_\_\_

STATE \_\_\_\_\_ ZIP \_\_\_\_\_ PHONE \_\_\_\_\_

Mail today to: Bell Business Catalog  
Southwestern Bell  
P.O. Box 2911 Room 228  
Beaumont, Texas 77704

Or call (collect): (713)835-7414



New  
Post Office  
Soon In  
Woodville

(From The Booster)

Woodville Postmaster Bruce Latiolais informed the Woodville City Council Monday night that the U.S. Postal Service has plans to build a new, larger, more modern facility here.

Latiolais predicted that construction would start as soon as Feb. 1, 1979.

"This will be your post office," the postmaster said. "And it will be one you can be proud of."

Latiolais said he came to the council as part of a "community contact" phase of the Federal Real Estate Board requirement prior to construction of such a facility.

Latiolais said he wanted to get input and comment from the Woodville city fathers as to where the location for the new facility should be. Latiolais said the U.S. Postal recommendation was for the new facility to be located somewhere on a north-south line either side of Hwy. 69 remaining inside the city limits.

Latiolais heard requests from the council asking that the post office consider areas on either side of Hwy. 190 also as they plan the facility. He said ideas to that effect will be put into the plan.

# 1978 FACTS ABOUT THE TYLER COUNTY MARKET PLACE IN 1977

TOTAL RETAIL SALES	\$32,095,000 (up from \$29,042,000)
FOOD SALES	\$10,804,000 (up from \$9,943,000)
GENERAL MERCHANDISE SALES	\$708,000 (up from \$673,000)
FURNITURE AND HOUSEHOLD APPLIANCES	\$1,323,000 (down from \$1,358,000)
AUTOMOTIVE SALES	\$8,818,000 (up from \$7,562,000)
DRUG SALES	\$814,000 (up from \$769,000)
GASOLINE SERVICE STATIONS	\$4,296,000 (up from \$3,685,000)
HARDWARE & BUILDING MATERIALS	\$668,000 (up from \$562,000)
APPAREL AND ACCESSORIES	\$1,368,000 (down from \$1,452,000)
EATING PLACES	\$1,621,000 (up from \$1,384,000)

POPULATION	14,670 (up 376)
MEDIAN AGE	M - 39.9 F - 37.1
HOUSEHOLDS	5,100 (up 200)
AVERAGE PERSONAL INCOME	\$3,762 per capita (up \$218)

## PROJECTIONS FOR 1982

HOUSEHOLDS	\$6,200
RETAIL SALES	\$54,164,000

SOURCE: THE 1978 SALES MANAGEMENT SURVEY OF BUYING POWER FOR THE YEAR 1977



DAVIS FOOD MARKET STARTED OUT TO BE A

# GENERAL STORE

AND THATS WHAT IT STILL IS TODAY  
SERVING ALL YOUR NEEDS !!

- ✓ Groceries
- ✓ Fresh Meats
- ✓ Hardware
- ✓ Fertilizer
- ✓ Feed
- ✓ Gulf Products
- ✓ School Supplies

*It's the  
Total Savings  
that Count!*



**"DAVIS  
FOOD  
MARKET JOINS  
HANDS WITH THE OTHER  
RETAILERS IN TYLER COUNTY  
IN SUPPORT OF THE TYLER COUNTY  
CHAMBER OF COMMERCE**

## DAVIS FOOD MARKET IN WARREN

LOCATED HWY 69

CALL 547-3339

*"We Support  
the Tyler County Chamber of Commerce."*

our sixth year of serving  
the community of Fred...

### FRED GROCERY

on Highway 92  
Next to the Fred Fire Department

- Groceries
- Lone Star Feed and Fertilizer
- Arco Gas
- Hardware
- Fresh Meat

*"We make Fred our home...  
thanks for your Patronage."*

Tryon & Jane McInnis

P.O. Box 73

429-3901

# Don't Forget Fred

**FRED  
WASHATERIA & CARWASH**

HWY. 92

Open 24 Hours

*Tyron & Jane McInnis, Owners*

*"Support your Chamber of Commerce"*

### McInnis Hardware

*& Supply  
Fred, Texas*

- Lone Star Feeds
- Garden Seed
- Groceries
- Hardware

*"We would like to thank all our customers for their  
continuing support during our 4th year and we  
are expanding to serve you better in the years to come."*

Mr. and Mrs. W. A. McInnis  
-owners-

Hwy. 92

429-5062

Best wishes to  
the Tyler County Chamber of Commerce.

### PATES AUTO PARTS

*"Support your Chamber"*

- ★ Auto Parts
- ★ Machine Shop & Garage with full time mechanic available to
- grind valves
- rework heads
- turn brake drums

**Soon to open  
Tire Shop**

Hercules and Michelin  
radials

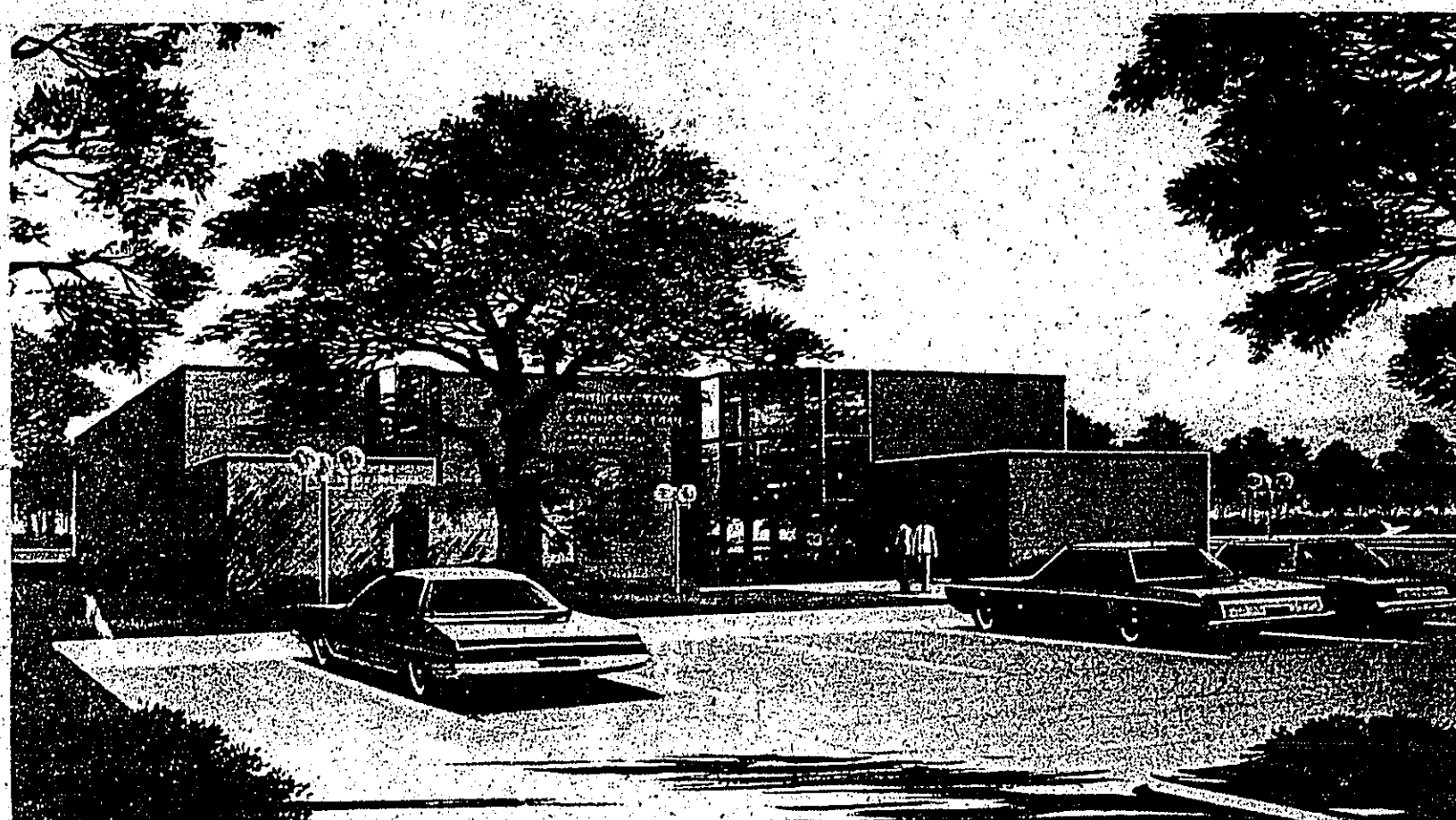
Your  
**GREEN  
LIGHT.**  
AUTO PARTS STORE

Dennis Wayne Moore

-owner-  
429-3973



## Opening Soon In Woodville



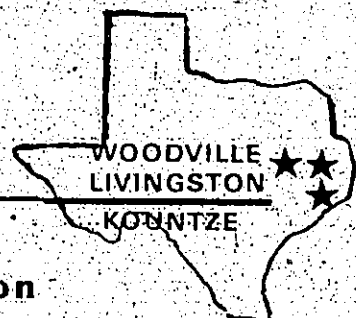
**SAVE WHERE YOUR MONEY REALLY**

<b>7<sup>3</sup>/<sub>4</sub></b>	6 Year Certificate \$1,000 Minimum YIELDS 8.06% With Daily Compounding	<b>8% ADDS UP</b>	5.25% Regular Passbook Account Equals
	4 Year Certificate \$1,000 Minimum YIELDS 7.79% With Daily Compounding		5.39% Annually Compounded Daily <small>Interest Paid From Date Of Deposit To Date Of Withdrawal</small>
<b>7<sup>1</sup>/<sub>2</sub></b>	2 1/2 Year Certificate \$1,000 Minimum YIELDS 6.98% With Daily Compounding	<b>We Support Our Tyler County Chamber</b>	<b>8 Year Certificate \$1,000 Minimum YIELDS 8.33% With Daily Compounding</b>
<b>6<sup>3</sup>/<sub>4</sub></b>	1 Year Certificate \$1,000 Minimum YIELDS 6.72% With Daily Compounding		
<b>6<sup>1</sup>/<sub>2</sub></b>	Passbook Day-In Day-Out Interest YIELDS 5.39% With Daily Compounding With \$5 minimum	<b>A Substantial Interest Penalty Is Required For Early Withdrawal From Certificate Accounts</b>	
<b>5<sup>1</sup>/<sub>4</sub></b>			

**SOUTHEAST  
TEXAS  
SAVINGS and Loan Association**

P.O. Box 936 Woodville, Texas

Branches Now Open In Livingston, 501 W. Church and Kountze Hwy. 69 S.



**\$10,000  
MAXIMUM LOAN  
FOR EACH INDIVIDUAL  
BY FEDERAL SAVINGS  
LOAN INSURANCE CORP.**

Serving All Of Southeast Texas

**283-3747**

## 'We Heard About Woodville'

for  
**35**  
years  
Tyler County's  
Source  
"For all your  
hardware needs"  
**Sullivan's**  
211 W. Bluff 283-2231

Feb. 23, 1978  
Chamber of Commerce  
Woodville, Texas 75979  
Gentlemen:  
We have heard about  
Woodville, and would like  
to learn some more. Our  
garden editor, Mrs. Mary-  
beth Weston, met Land-  
scape Architect Jan Mc-  
Harp recently, which re-  
sparked her interest in your  
project.

All information will  
be appreciated, and es-  
pecially anything that you  
think would be of par-  
ticular interest to House &  
Garden readers. Thank you  
in advance, for your help.  
Gratefully,  
Susan S. Hardy  
Garden Department

702 E. Washington  
Tipton, In. 46072

Dear Sir or Madam:

Please send latest  
daily newspaper, maps,  
etc. of your city.

We are interested in  
motels, trailer courts and  
camp grounds.

We will be (plans now)  
wintering in your area.

My husband is re-  
tired plumber and pipe  
fitter from Chrysler Corp.

Thank you  
Sincerely  
Mrs. Charles C. Sharp

716 Watson  
Marlin, Tx. 76661  
March 4, 1978  
Woodville  
Chamber of Commerce  
Woodville, Tx.

Dear Sirs:

Would you please give  
me information on the  
time of the Dogwood Festival  
and the best time to view  
the dogwood blooming sea-  
son.

Friends from Idaho  
are coming to visit and wish

to see them at their height  
in glory.

Thank you  
Julia M. Peyton  
(Mrs. Andrew H. Peyton)  
March 7, 1978

We are very interest-  
ed in participating in the  
Dogwood Trail Ride. Would  
you please send infor-  
mation about this ride and  
the Festival too!

Mrs. Linda Sommer  
810 Alyse  
Deer Park, Tx. 77536

To whom it may concern,  
I saw your article in  
the East Texas Vacation  
Guide. Would you please  
send me more information  
in your area, particularly  
info concerning camping  
grounds, facilities, fees,  
maps, and the Alabama  
Coushatta Indian Reserva-  
tion. Thank you for your  
help.

Sincerely yours,  
Joy Lynn Durrant  
3902 East 29th MS  
Bryan, Tx. 77801



**We Support**

**The**

**Tyler County  
Chamber**

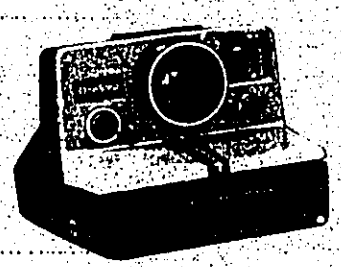
**100%**

**Do You?**



**Your  
Photo  
Center**

- ★ Polaroid & Kodak Cameras
- ★ Film
- ★ Film processing
- ★ Special orders on 35mm  
cameras and  
accessories, slide  
& movie projectors



**Everything for  
your photo needs**

**Bob's Prescription Shop**

1010 W. Bluff

283-3073



# CONGRATULATIONS

## TO THE TYLER COUNTY CHAMBER OF COMMERCE

"Your Growth Is Our Growth"

"Our entire staff is Proud to be a part of the growth and expansion of Tyler County.

We commend the Officers and Directors of the 1978 Chamber for a job Well Done!

We encourage the new directors and lend our support in the coming year!"

CLOTHING and SHOES FOR YOUR FAMILY

GIFTS FOR ALL OCCASIONS FROM **JB Best & Co.**

We are proud to be a part of the retail community sector in Tyler County as we have been for over 59 years!

**JB**  
Best & Co.

## Chamber Gets Letters Every Day

### Congratulations Tyler County Chamber Of Commerce Childress Monument 30 Years Of Serving Tyler County

Merle Childress Drake, Owner  
Hwy. 69 S. 283-2485

### Limited Edition Prints Collector Prints

By These Popular Artists

Landscape	Wildlife
Larry Dye Carol Gibson - Sayle Robert Summers Dalhart Windbery	Guy Cobelesch Don R. Eskelberry Charles Frada Ray Ham Arthur Singer Richard Evans Younger
Bird	Floral
Conny Forman Ronald Louque John O'Neill Roger Troy Peterson Larry Tschik William Zimmerman	Anne Ophelia Dawden Manshu Salto
Bird & Floral	Western
Helen Sewell	Wayne Balza Frank McCarty G. Harvey

We have other prints available in limited and unlimited editions.

Unique furniture in solid pine by **Mike Galloway**

Also custom charcoal portraits by **Karen Haring**

Custom Framing

Woodland Galleries

190 W 283-5024

March 5th, 1978  
561 NW Newton  
Burleson, Tx. 76028  
Chamber of Commerce  
Dept. ETG  
118 Pavilion  
Woodville, Tx. 75979

Dear Sir:  
I have a group of Home Demonstration Club members who are interested in attending the Dogwood Festival and making a tour of your area.

1. A place that will serve 40.  
2. How to contact the Indian Village.  
3. How to reach the Wild Azalea Park - out of Newton.

Thank you so much for any help you can give us.  
Mrs. E.W. Davis  
March 14, 1978

Dear Sirs:  
Please send me your information on the Tyler County Dogwood Festival. We are new to the area arriving here from Chicago area - so any help you can give us in how to enjoy this time of year would be a great help. I've heard the Dogwood Festival is a thing to see and have read the article in Texas Homes. Thank you very much.  
Sincerely yours,  
Mrs. Bill Crabtree  
3159 Captain Dr.  
Port Neches, Tx. 77651  
Sept. 24, 1978  
P.O. Box 40045  
Houston, Tx. 77040  
Chamber of Commerce  
Woodville, Tx.

Gentlemen:  
Please send me pertinent details regarding trails, temporary agencies for office work, library facilities. We own our trailer. Also, is Woodville a dry county? Any literature of women's clubs and entertainment for me and my husband would be appreciated. How about high schools?  
I shall await your reply.

Sincerely,  
Mary Ann Gudea  
Nov. 6, 1978  
Early American Life is publishing an article on dogwoods in the April 1979 issue, and I'd like to include a listing of Dogwood Festivals with it. Please send me information on the festival you are planning for 1979. Since EAL is a bimonthly publication, I will need "the facts" by December 1 - if you have this year's brochure and next year's dates, that's fine.  
Thanks very much for your help!

Sincerely,  
Patricia L. Faust  
Assistant Editor

Dear Sir:  
Please send me names and addresses of motels in your area. I'm bringing a bus group of senior citizens into your area in August, 1979.

Thanks  
Elsie Bortoskewitz  
605 Gloria  
Sequin, Tx. 78155

3rd Floor, Courthouse  
Georgetown, Tx. 78626  
Dec. 29, 1977  
Manager  
Chamber of Commerce  
Woodville, Tx. 75979

Dear Sir:  
I have a group of Home Demonstration Club members who are interested in attending the Dogwood Festival and making a tour of your area.

1. A place that will serve 40.  
2. How to contact the Indian Village.  
3. How to reach the Wild Azalea Park - out of Newton.

Thank you so much for any help you can give us.  
Mrs. E.W. Davis  
March 14, 1978

Dear Sirs:  
Please send me your information on the Tyler County Dogwood Festival. We are new to the area arriving here from Chicago area - so any help you can give us in how to enjoy this time of year would be a great help. I've heard the Dogwood Festival is a thing to see and have read the article in Texas Homes. Thank you very much.  
Sincerely yours,  
Mrs. Bill Crabtree  
3159 Captain Dr.  
Port Neches, Tx. 77651  
Sept. 24, 1978  
P.O. Box 40045  
Houston, Tx. 77040  
Chamber of Commerce  
Woodville, Tx.

Gentlemen:  
Please send me pertinent details regarding trails, temporary agencies for office work, library facilities. We own our trailer. Also, is Woodville a dry county? Any literature of women's clubs and entertainment for me and my husband would be appreciated. How about high schools?  
I shall await your reply.

Sincerely,  
Mary Ann Gudea  
Nov. 6, 1978  
Early American Life is publishing an article on dogwoods in the April 1979 issue, and I'd like to include a listing of Dogwood Festivals with it. Please send me information on the festival you are planning for 1979. Since EAL is a bimonthly publication, I will need "the facts" by December 1 - if you have this year's brochure and next year's dates, that's fine.  
Thanks very much for your help!

Sincerely,  
Patricia L. Faust  
Assistant Editor

Dear Sir:  
Please send me names and addresses of motels in your area. I'm bringing a bus group of senior citizens into your area in August, 1979.

Thanks  
Elsie Bortoskewitz  
605 Gloria  
Sequin, Tx. 78155

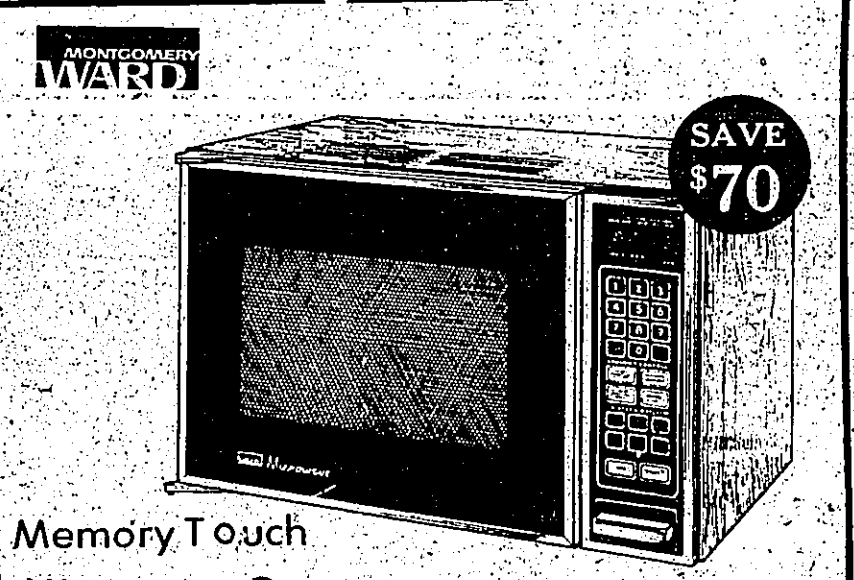
in your area, motel facilities, restaurants that can handle groups of about 40 and any other information you think we would be interested in.

Thanking you, I am  
Yours very truly,  
Judy Dedek  
County Extension Agent  
Williamson County  
Chamber of Commerce  
Woodville, Tx. 75979

Between what dates would be the best time to visit East Texas to see the dogwood in bloom.

Thank you very much.  
Willfred Nordt  
Rt. 3 Box 67  
Brenham, Tx. 77833  
Sept. 25, 1978

Would you please send me information on industry and/or job opportunities in your area. I need this information for consideration of a job and area change.  
Your prompt action will be deeply appreciated.  
Thank you,  
Jerry W. Campbell



Memory Touch  
Microwave Oven  
with 3 stage cooking  
Sale \$399.88  
Reg. \$469.95

- Solid state touch control panel
- Digital clock with 99 minute display timer
- 3-stage memory cooking programs cycles...over automatically shifts
- Temperature probe
- Memory recall
- Gourmet cooking control



Best Seller  
Rugged 5-HP filler  
with cast iron gear  
case and safety  
power reverse.  
Chain or belt driven.  
SALE \$279.88  
Burns  
Sales Agency  
MONTGOMERY WARD  
Alan Burns, Owner  
100 S. Charlton 283-3791





**Congratulations  
To  
The  
1979  
Tyler  
County  
Chamber  
Of  
Commerce!**



Kirby Forest Industries, Inc.

## Growth Earmarks Bell 1978 Activities

Growth and construction to meet growth, marked Southwestern Bell's activities in Woodville during 1978, according to Gary Pircher, local manager for the company. "During the year, we experienced a 4.6 percent increase in our residence market, and a 6.8 percent

increase in business customers," Pircher said. "By the end of 1978, we were serving 2,400 residence and 457 business customers in Woodville."

Construction costs for service improvement activities increased dramatically during 1978, Pircher added. He cited two major buried cable projects as prime examples. The first project replaced old cable from Woodville to Colmeston, while the second established a new buried cable route from Woodville to Warren.

"Both projects not only improved service conditions, but they also added lines for present and future use," he explained. Pircher said the cost of the two activities was upwards of \$550,000.

An additional \$117,000 was spent by Southwestern Bell last year on what Pircher termed "smaller on-going projects." These include extensions to new customers, replacing old plant, and adding new lines for future growth," he said.

During 1979, Bell's manager said the company plans to spend \$400,000 on another cable project east along FM 1725. This will add lines in Ivanhoe as well as additional facilities.

*Things might be like they used to be...*

*But Thanks to our Chamber of Commerce*



The Livin' Is Better

**McClure  
Furniture**  
*"Complete Home Furnishings"*

305 N. Magnolia 283-2519

## FREEMAN Concrete & Hardware

- Electrical Supplies
- Plumber Supplies
- Garden Tractors & Implements
- PVC Pipe
- Fixall Paints
- Septic Tanks
- Dayton Electric Motors
- Water Well Pumps
- Concrete Culvert Pipes

Kenneth & Deborah Freeman

"Congratulations to the Tyler County Chamber of Commerce"

HWY 69

837-5278

THE HARTFORD 


We're proud  
to be members  
of the  
**TYLER COUNTY  
Chamber of Commerce**



**Globe Mann Ins. Agency**  
Woodville, Texas Call 283-2528  
**Tom McQuire, Manager**

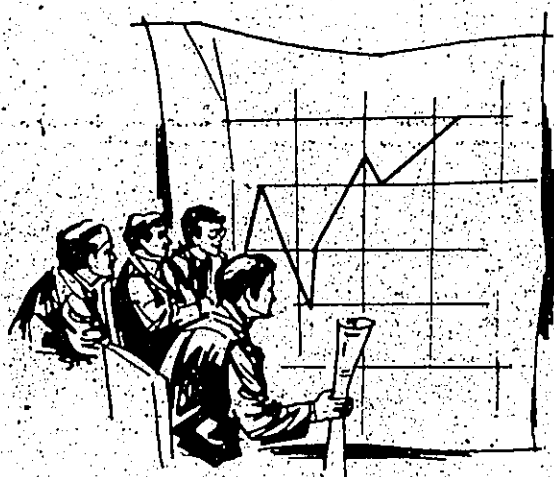


H  
Our  
Business  
is  
Families

**C. Grady Holderman**  
Realtor • Builder  
Thanks to the families  
of Tyler County 



# We've Come A Long Way Together. But The Best Is Yet To Come.



We At Citizens State Bank Recognize The Value Of A  
Top Notch Chamber of Commerce IN TYLER COUNTY.  
Lend Your Support And Your Ideas To The TYLER COUNTY

## CHAMBER OF COMMERCE

PLEDGED TO PROGRESS

# “Give Us A Chance To Say Yes”

AND REMEMBER...

## “We're In The Banking Business

## To Sell Good Service.”

**Officers:**

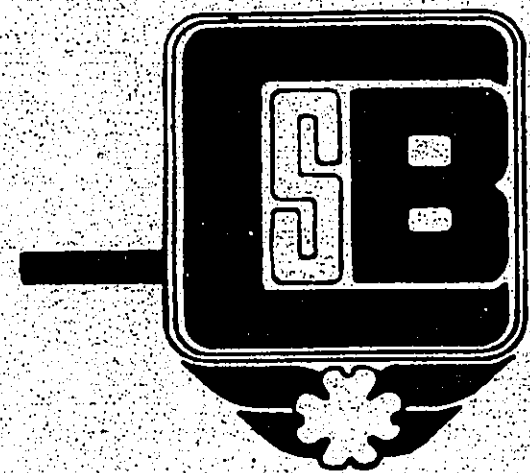
Robert A. Mann  
Carey L. Cruse  
J.B. "Toby" Spurlock  
W.J. Ross  
D.P. Mann, Jr.  
Bobby Ray Kinnon  
David O. Farrell  
Webb W. Schworth  
Roy Solding  
Mrs. Hazel Swearingen  
Mrs. Betty Grimes

**Directors:**

F.M. Archer  
R.B. Barclay  
Carey L. Cruse  
Leroy Davis  
W.S. Jarrott  
J.S. Annette  
D.P. Mann, Jr.  
Robert A. Mann  
W.S. Nichols, Jr.  
Raymond A. Parker  
Allan Shivers  
George E. Tubbs  
Joseph Vnhar

**Employees:**

Tina Sue Bendy  
Sylvia L. Best  
Vera Bradley  
Juanita Brown  
Sandra Eargle  
Kelly Evans  
Wanda Ferrell  
Glennora Foreman  
Lisa Fortberry  
Juanita Gray  
Lanita Kay Henderson  
Zora L. Holbrook  
Karan Ivy  
Evelyn James  
Eleanor Jordan  
Jo Ann Jordan  
Margaret Kottong  
Diana Langley  
John B. Linnage  
Kathy Minter  
Alma Pentecost  
Lucy Pruffles  
Linda Richter  
Vicki Roberts  
Wyllma Ray Smith  
Susan Sharpbill  
Carla Stewart  
Norma Jean Turner  
Essa D. Walker  
Vera Wall  
Susan Wigley

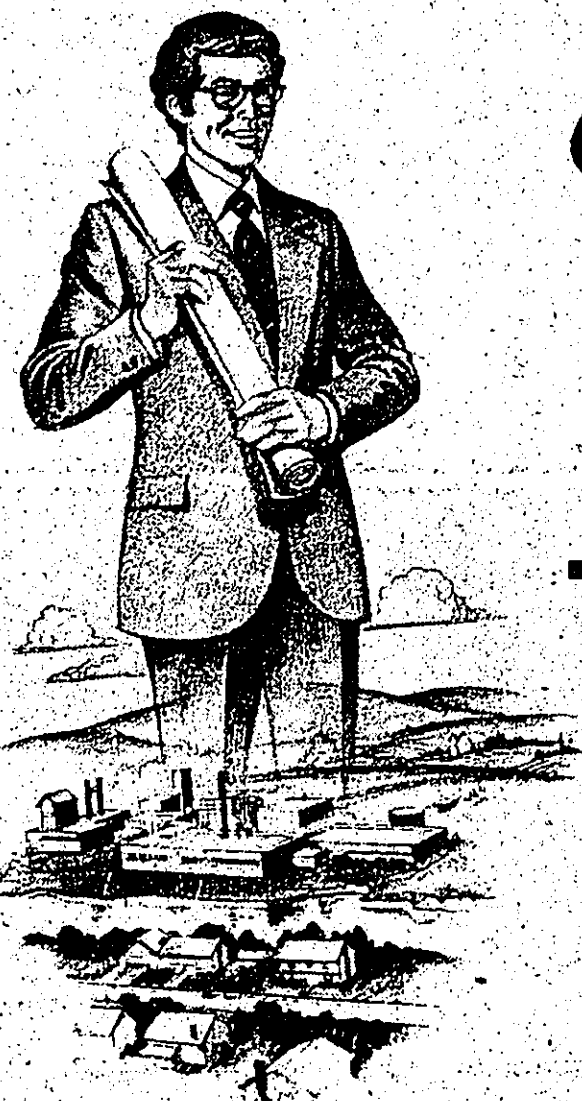


# CITIZENS STATE BANK

P. O. BOX 109 WOODVILLE, TEXAS 75979







*Committed  
to Community  
Betterment*

**Thats Right!**

**The Tyler County  
INDUSTRIAL  
CORPORATION**

*is interested in the continued  
solid growth of Tyler County.*

*...organized in the late 1950's the Corporation  
is dedicated to county-wide community betterment  
and is directly responsible thus far for locating*

**Three Fine New Industries Here!**

**Keller Aluminum  
Levingston Industrial Products  
Trotti & Thompson Concrete Plant**

**For More Information About**

**THE TYLER COUNTY  
Industrial Corporation**

*Write: Tyler County Industrial Corporation, P.O. Box 509,  
Woodville, Tex*

**Visitors Seek Info  
About Dogwood Blooms**

Feb. 27, 1978 Are they at the Indian Reservation, too. We would like some information about when the dogwoods are in bloom, of the country. Is the Indian Reservation open in the spring months or later. We would appreciate hearing from you soon as we are planning our vacation and have to take it soon.

**Smyly's Jewelry**

**JEWELRY GIFTS**  
*they'll cherish!*

*"We Salute the Chamber"*

**Valentine's Day  
Wednesday  
February 14th**

112 W. Bluff 283-2115

Thanks  
Mr. & Mrs.  
Ralph Wieschbusch  
2203 Brookhill Dr.  
Austin, Texas 78745  
March 24, 1978  
Allan Shivers Museum  
Woodville, Texas 75979  
Re: The Abundant  
Life History  
Trailer Dogwood Tour  
March 29th-30th, 1978

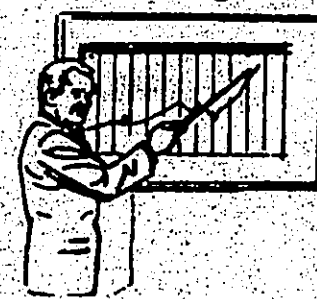
Dear Sir or Madam,  
Please find enclosed  
out check no. 153 for the  
amount of \$16.00 to cover  
the cost of 33 tickets at  
50¢ per person. We hope  
to arrive on March 30th  
approximately at noon. Our  
object is to see the Dog-  
wood in bloom while in  
your vicinity and would be  
happy if you would advise  
us how and where to enjoy  
this. Is it possible for you  
to supply a guide so that  
we do not miss the best?  
We also wish the Big  
Thicket National Preserve  
if you recommend it. Any  
other suggestions you may  
have will be greatly ap-  
preciated. We will be  
bringing a picnic lunch  
with us for the whole party.

**Thanks  
to all our  
Tyler County  
rural electric  
customers.**

**SAM HOUSTON  
ELECTRIC  
COOPERATIVE, INC.  
Livingston, Texas 77351  
Phone 327-5711**

**PARTNERS IN  
PROGRESS**

**Together  
we can get it done**



**"We're Proud To Be  
Members  
Of The Tyler County  
Chamber Of Commerce"**

**Levingston Industrial  
Products Of  
Woodville**





About Nature...  
The forest and its wildlife,  
The air we breathe and the water we drink,  
About this whole thing we call ecology...  
The people of Temple-EasTex Incorporated  
Know, understand and care.  
It's our nature.

 **Temple-EasTex**  
**Forests** DIVISION  
OF TEMPLE-EASTEX  
INCORPORATED

### Church Group Plans Visit To Tyler County

6806 Japonica Park Memorial, Baptist  
Houston, Tx. Church have planned our  
March 8, 1978 annual dogwood trip to  
Chamber of Commerce Woodville, the 30th of  
Dear Sirs: March or the 7th of April.  
A group of forty from me information concerning  
the prices of the Tribal

*"Our Best Wishes  
to the  
Tyler County  
Chamber of Commerce"*  
**Collier  
Insurance Agency**  
formerly Feagin Insurance  
*Agents: Malcolm Collier  
Carolyn Collier*

212 W. Bluff 283-2242

Dances, Big Thicket Tour,  
Indian Country Tour, Train  
Ride, Big Thicket Reptile  
Tour and the Living In-  
dian Village Tour and times  
of the start of these tours.

Thank you  
Mrs. Ray Hogan  
July 27, 1978  
Woodville Chamber  
of Commerce  
Woodville, Tx.

Gentlemen:  
I am considering your  
area, which I understand to  
be quite lovely and fairly  
private, for my honey-  
moon spot in early Decem-  
ber. I am looking for a  
small cottage, secluded,  
cozy, romantic... am I  
asking for the impossible?  
Do you have any suggest-  
ions where I might find  
such a place? It will be  
for December 7th plus.  
Any help you may have  
to offer will be greatly  
appreciated. I am currently  
stationed at Fort Bragg,  
North Carolina, but will  
be visiting in Houston the  
weekend of August 5, and  
you may reply to:  
2/Lt. James P. Boyle  
5701 Schumacur 14  
Houston, Tx. 77057  
Thank you for your  
assistance.

## Jarrott's Pharmacy

*Walgreen*  
AGENCY

*for prescription and  
all your drug store needs*

Health - Beauty - Gifts

Cosmetics - Fountain

*Dependable prescription service*

205 S. Magnolia

283-2550

## Best Wishes To The Tyler County Chamber Of Commerce From The Staff At A & M Motor Co.

605 S. Magnolia

283-2534



### "We Salute The Chamber"

S & S Welding Service

Rusty Spears, Owner

At North City Limits

P.O. Box 177

Colmesneil, Texas

837-5360



## Chamber Membership List Growing

1979 Membership - Tyler County Chamber of Commerce	Globe-Mann Insurance	Tyler County Booster	Dr. John Gilchrist	Turner Plumbing	Dr. Curtis Garner
Alabama-Coushatta Ind. Res.	Gulf States Utilities	Milton Walters	Grammer's Drive Inn	Tyler County Hospital	Scott Gilchrist
Allison Building Materials	Mrs. Ethel Osborn Hill	West Magnolia Drive In	S. J. Head	Wardfield Goodyear	Grimes Gulf Service Sta.
Barlow Lake Estates	Grady Holderman	White's Department	Hill's Hollow	Western Auto	Heritage Garden
J. B. Beau & Co.	Jarrot's Pharmacy	Woodville Inn	The Inn Shop	Woodville Feed	Hilltop Grocery
Bob's Prescription	Jo-Be Equipment	M.F. Alford	Jasper Federal S&L	Woodville Ready Mix	Jack Lane Ford
Dr. L. Gayle Burton	KVLE	A&M Motor	Keller Building Products	James Allison	Dr. Jim Jimette
Camden Timber	Levingston Shipbuilders	Webb Ashworth	Bruce Lattolais	American Cablevision	Bobby Kinnon
Chester State Bank	Magnolia Restaurant	Beaumont National Linen	Lollypop Boutique	Dr. R.B. Barclay	David Lefkowitz
James Clark	Dr. R.E. Swearingen	Birdwell Department	Mahan Plumbing	Rev. Clyde Bennett	Magnolia Drive In #1
J. B. Coffman	Mrs. Ella Moseley	Brookshire Brothers	B.M. Minter	B&K Variety	O.L. Marsh
Jack's Food Market	Carl Nichols	CA's Sporting Goods	Music City	Jack Benn Real Estate	M&M Western Wear
Henry M. Durham	Parags	W.F. Carter & Brother	James Nichols	C&D Company	Robert McCombs
East Texas Realty	Aubrey Railroad	Childress Monument	Pickett House	Champion-International	Ogden Chevrolet
David Farrell	Savon Drugs	J.C. Clark	Ray's Fried Chicken	Citizens State Bank	Dr. J.M. Radford
Justin Fuller	Southeast Texas S&L	Collier Ins. Agency	Charles Smith	Rev. E.A. Coleman	Sam Houston Electric
W. Gassiot	Spell Cleaners	Dairy Queen #1	Southland Paper	Otis G. Smith Real Estate	Harry Stafford
	Dolly Sturrock Real Estate	Dayspring Christian Center	Toby Spurlock	Southwestern Bell Tele.	Fred Sullivan
	Sutton & Company	Doug's Auto	Sullivan's Hardware	Dr. Gary Tatum	Thomas Nursey
	Tomple-Eastex Forests	Edwards Funeral Home	Sonic Drive Inn	Tommy Creek	Troy Feed
	Tharnton's Hardware	Tyler Co. Builders Disc.	This Old House	United Portable	Glen Watson Realty
	Tyler County Farm Bureau	The Furniture Center	Timberlakes Development	Joe Wheat	Woodville Florist
				Woodville 1SD	

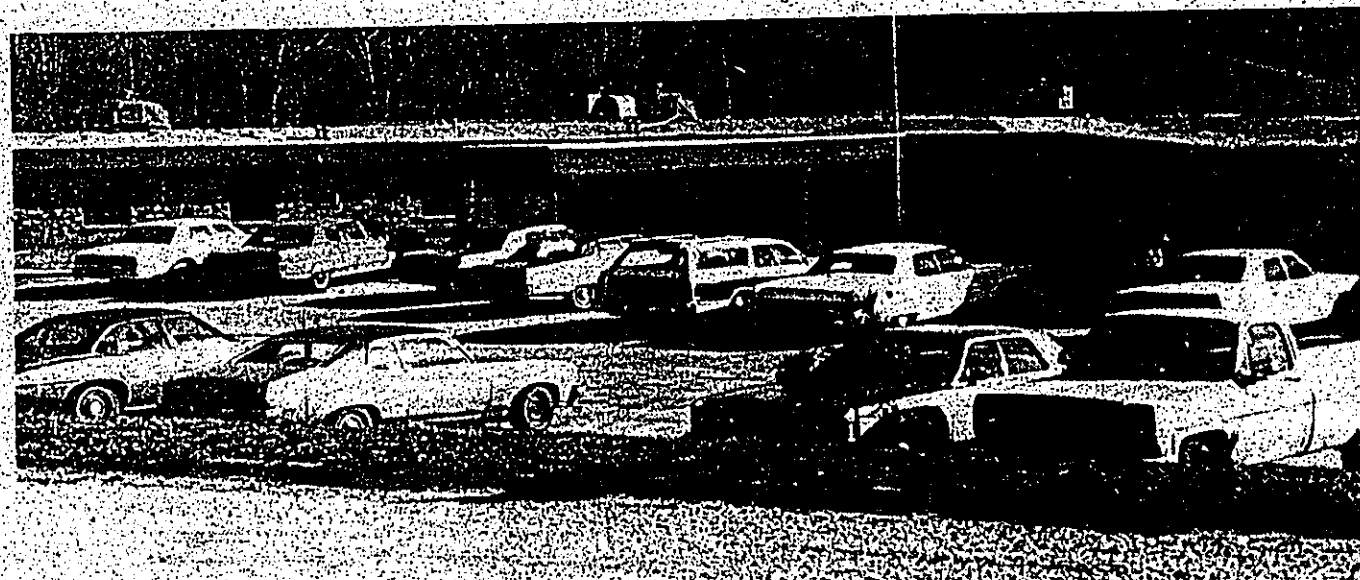
## Holiday Pines

*'The Tender Loving Care Place'*

Holiday Pines Lodge, Inc. is a modern 112 bed, long term health care facility located on Cardinal Drive in Woodville and has been a quiet and peaceful home for many since July, 1975.

Holiday Pines offers Tyler County a completely staffed facility, home cooked meals and a homelike atmosphere for private, semi-private or Medicaid patients.

Our Staff are professionals who are dedicated to giving quality nursing care with that little touch of "tender loving care".



Visit us and observe a part of your community in action!

Ruby Marrero, Administrator

Letters  
Indicate  
Interest  
in Arts

Woodville Chamber of Commerce  
Please advise me as to cost, location, time etc. of your Arts & Crafts Show. I paint in oils and have several I would like to bring.

A&S Arts & Supply  
Nelda Smith  
Box 358  
Franklin, Tx. 77856

Brownwood, Tx.  
June 21, 1978  
Woodville Chamber of Commerce  
Woodville, Tx. 75979

Dear Sirs:  
Please furnish me with the information reference to the ad in the July issue of Texas Monthly.

W.G. Streckert  
2801 First St.  
Brownwood, Tx. 76801

Feb. 27, 1978  
Chamber of Commerce  
Woodville, Texas 75979

Gentlemen:  
We wish to visit Woodville, where the dogwood is in bloom.

We would appreciate it very much if you will let us know when the dogwood begins to bloom this year and, if feasible, about how long it usually stays in bloom.

Thank you for any help you can give us in this regard.

Very truly yours,  
W. Ray Brown

## Travel Editors Eye Tyler County Area

March 3, 1978  
Tyler County Chamber of Commerce  
118 West Pavillion  
Woodville, Texas 75979

Dear Sirs:

Enclosed please find a section of an article entitled "Indian Country Vacations" which is scheduled for publication in an upcoming issue of "Better Homes and Gardens" magazine. We would appreciate your help and cooperation in reviewing this material for factual accuracy (dates, prices, spellings, locations, etc.) are particularly important).

After you've had an opportunity to look the story over, please call me collect at 515/284-9604. I would appreciate hearing from you by March 10, 1978. Thank you for your help.

Sincerely,  
Barbara Humeston  
Associate Travel Editor

Box 210  
Graham, Tx. 76046  
April 10, 1978  
Chamber of Commerce  
Tyler County  
118 West Pavillion  
Woodville, Tx. 75979

Dear Sirs:  
I am doing a project for Texas history about interesting towns and country seats. Please send me some pamphlets, short books, and information about historical markers. Thank you for your time.

Sincerely,  
Tini Boucher

**M & M Western Store**

Roy and Bea Mitcham  
Tiny Mitcham

*"We support our Chamber"*

283-8896  
1105 S. Magnolia

**MILLER'S BIG STAR**

SALUTES THE  
TYLER COUNTY  
CHAMBER OF COMMERCE

We are home owned  
and home operated.

Ed Miller, owner

WOODVILLE, TEXAS

## Clothing And Shoes

for the entire family

Best Wishes  
To The  
Tyler County  
Chamber of Commerce

From The Staff Of

**J.B. White Co.**

205 W. Bluff 283-2863

**WOODVILLE FEED AND SUPPLY**

WAYNE FEEDS

CUSTOM SPREADING LIME  
SOIL SAMPLE SERVICE LIQUID FEED  
BAG AND BULK FERTILIZER

YOUR GARDEN CENTER  
FOR TYLER COUNTY

209 E. Bluff 283-5224



## In 1979 Take Your Guests Here...



The Big Thicket Tour, Ride, especially by Lester Battise is as interesting as any tour you will ever take in the area.

In addition, there is the Indian Country Tour, Train Ride, Rappelle Garden Tour, Living Indian Village Tour and Tribal Dances.

SCHEDULE: Open (Jun.-Aug.) 10 a.m. - 6 p.m. daily, 12-30 p.m. - 6 p.m. Sunday. All Activities, September

November and March - May 10:30 a.m. - 5 p.m. daily and 12:30 p.m. - 5 p.m. Sunday. Closed Monday & Tuesday, November and March. Closed Monday, October and April. (Tribal Dances on weekends). Closed December - February. Write or call for schedule.

## As Well as Here



Beyond The Sundown, the outdoor drama on the history of the Alabama-Coushatta Indian Tribes is a combination of excitement, color, music, dance and much more.

Nightly, except Sundays, June 22 through August 25 at 8:30 p.m.

Why just see it? Be part of it. Auditions will be held on February 4 at the Indian Village. Call for specific information.

**Your Neighbors to the West**  
**Alabama Coushatta Indian Reservation**  
**Rt. 3 Box 640**  
**Livingston 77351 (713) 563-4391**

## From Colorado To Kansas

645 W. Midway Blvd.  
Broomfield, Colo. 80020  
Sept. 12, 1978  
Tyler County  
Chamber of Commerce.

Dear Sirs:  
Please send me some information on the Big Thicket Area and the Big Thicket National Preserve. Sincerely  
Mrs. John Younger

Dec. 27, 1978  
We are considering re-locating to Texas in the near future and would appreciate it if you could provide us with maps and information regarding your town and the surrounding areas. Thank you.

D.L. Ward  
P.O. Box 376  
Jewell, KS. 66949  
League City, Tx.  
Oct. 5, 1978

Dear Folks,

My social studies teacher has planned a pretend trip for me through Woodville. I would appreciate any information you could send me on your city.

My science teacher has requested me to ask for a dogwood leaf. Mercy! This is just October! What will they require by May? Hal  
Thank you so much,  
Elizabeth Hockelsmith  
1801 Chalborne  
League City, Tx. 77573

March 30, 1978  
Chamber of Commerce  
Woodville, Tx. 75979

Attention: C  
Please send me what

ever free information you may have regarding "mini-vacations" in the Woodville area, read in Wallstreet Journal.

Very truly yours,  
Eugene C. Hammons  
1500 South Tower  
Pennzoil Place  
Houston, Tx. 77002

Aug. 28, 1978  
Chamber of Commerce  
Woodville, Tx.

Sirs:  
Please send me information relative to the play, Beyond The Sundown a map and motel accommodations in your city. A group from here is planning to come down soon. I shall appreciate this information soon.

Thank you,  
Nolabelle Montgomery  
527 Big Rock St.  
Canton, Tx. 75103

## Colmesneil Department Store

Full line groceries  
general merchandise  
Lone Star Feeds

Mr. & Mrs. J.C. Carter  
Owners

"Support Your Chamber"  
Hwy 69 837-5173

## Grow Tyler County

Everyday 11 a.m. - 8 p.m.

Fried Chicken  
Chicken & Dumplings  
Country Vegetables  
Served Family Style  
All You Can Eat!

## Pickett House

Located In Heritage Village  
(1 mi. W. Of Woodville-Hwy. 190)  
Reservations & Information (713) 283-3946

## Writer Asks About Heritage Village

Sept. 5, 1978  
Dear Sirs:  
I am writing to inquire about a place called "Heritage Village" located somewhere around Woodville.

If there is such a place, could you please send me what information you have? I would need to know the time and date the place could be toured, places to eat, directions

of how it may be reached, and prices for admittance, food, etc.

I am the director of a Senior Citizen club in Frankston, Texas. Our group would consist of approximately 40 people. We would like to make arrangements to come during the week of the 13-17 of November.

Could you please answer this letter as soon as possible. Thank you.

Cordially,  
Mrs. Travis H. Brown  
Frankston, Tx.

Dec. 28, 1978  
Chamber of Commerce

Gentlemen

Please send me information regarding deer leases in your area. Maps, price and contact information, if available, will be appreciated.

Thank you for your cooperation, the requested information will be most helpful.

Sincerely  
Kenneth A. Duhon  
Houston Northwest  
Medical Center  
710 FM. 1960 West  
Houston, Tx. 77090



THE  
CHAMBER  
OF  
COMMERCE  
AND

E & L LUMBER CO.

BOTH WORKING TO  
BUILD TYLER COUNTY

E & L LUMBER CO.

283-2542

Beaumont Hwy

We Support the  
Tyler County  
Chamber of Commerce



James C. Davis

-Owner-

DAVIS GENERAL MERCHANDISE

Hwy. 69 Colmesneil 837-2958



# KVLL

Congratulations Tyler County Chamber of Commerce

• News Every Hour

• Swap Shop, 9:30 a.m. & 4:00 p.m.





## Asking About Tyler County

Sept. 27, 1978 Dear Sirs:  
 East Texas Gulf Highway Association  
 Mt. Pleasant, Tx.  
 Dear Sir:  
 Will you please send me information on the "Green Carpet route" as I want to drive this route to Houston this November. I would like additional information on the cities of Nacogdoches and Woodville.  
 Sincerely yours,  
 J. Carpenter  
 2819 N. 73rd Place  
 Kansas City, Mo. 66109  
 Jan. 21, 1978  
 Tyler County Chamber of Commerce  
 118 Pavilion  
 Woodville, Tx. 75079  
 Gentlemen:  
 My husband and I are craftsmen who have worked in various shows and Flea Markets all over the State. We are interested in renting a booth in the Dogwood Festival. Please send us an application. Thank you.  
 David & Penny Rose  
 609 Sprink St.  
 Brenham, Tx. 77833  
 March 21, 1978  
 Tyler County Chamber of Commerce  
 118 Pavilion  
 Woodville, Tx. 75079

Help Support Our Chamber  
 "For Beauty Inside & Out"

Now In Stock!

- Fruit and Nut Trees
- Rose Bushes
- Azaleas



Order Now For Valentines

Thomas Nursery  
 And Florist



Beaumont Hwy. Your Full Service Florist 283-2421

THE TWO WOODVILLE DAIRY QUEENS ARE  
 PROUD TO BE A PART OF THE PROGRESS  
 OF WOODVILLE.



We wish to thank our many friends  
 and to extend a warm welcome  
 at either of our 2 locations.

Our new location on So. Magnolia  
 now features pizza from 10 to  
 closing in addition to the buffet  
 from 11am - 2pm.

1308 W. Bluff  
 283-2584

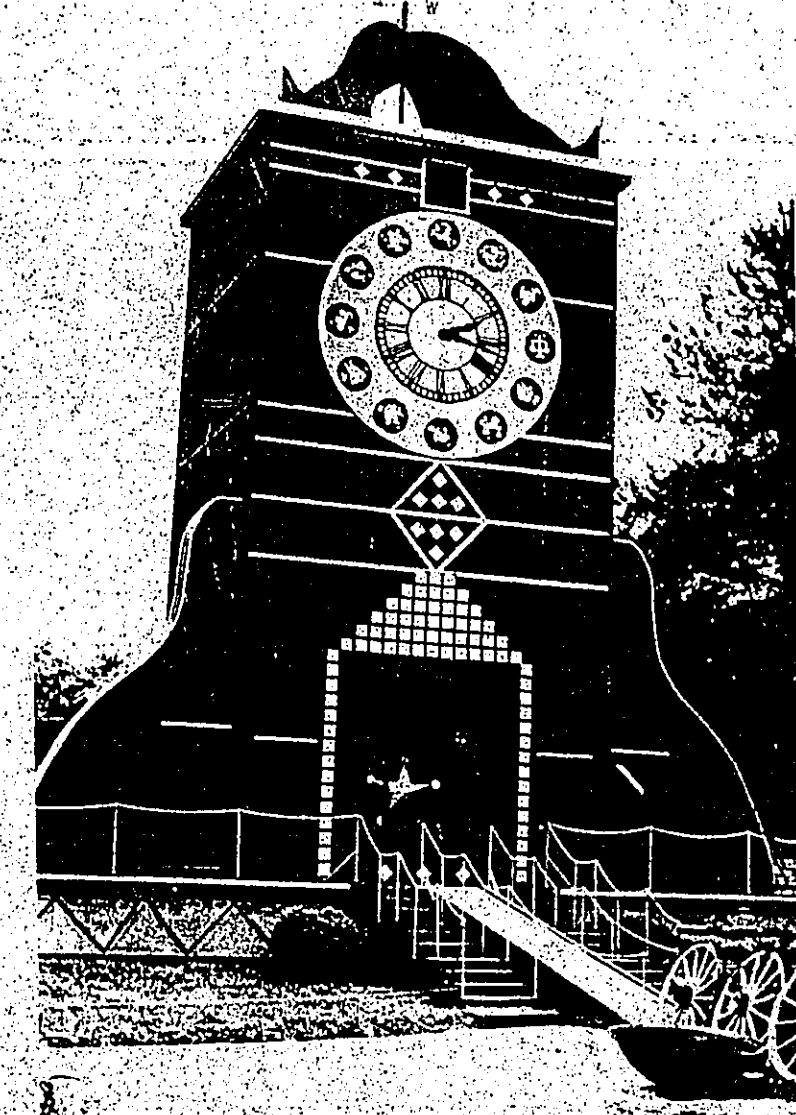
So. Magnolia  
 283-2500



Dairy Queens  
 of Woodville



## HICKORY DICKORY DOCK WOODVILLE KEEPS THE CLOCK



### PUBLICITY PROMOTION CAN MEAN MONEY TO EVERYONE

By using an old clock found in a junkyard Clyde E. Gray, Owner of Heritage Village has been able to attract the attention of millions of people over the country and focused their attention on Woodville and his tourist attraction. In the past ten months thousands of articles have been written and printed in newspapers and magazines all over this country, including Canada, and Mexico about the giant clock in Woodville. All the television networks have been very generous in the time devoted to the story resulting in millions of dollars worth of free publicity and advertising for our City, Tyler County, East Texas and naturally Heritage Village.

VISIT OUR NEW ATTRACTION  
 AT  
 WOODVILLE, TEXAS  
 1 MILE WEST ON HWY 190

## SEARS

where America Shops

- Guaranteed service after the sale
- Shop conveniently by phone

Best Wishes  
 to the Tyler County  
 Chamber of Commerce

Authorized CATALOG SALES MERCHANT  
 Sears  
 301 N. Magnolia St.  
 Woodville, TX.

Shop feature  
 by phone  
 283-3756

Owned and operated by Dorothy Nettles

Allstate  
 You're in good hands



Congratulations! Tyler County  
 Chamber of Commerce

25% DISCOUNT

on your Allstate Homeowner.  
 Come by and visit with the friendly  
 people at Clemmons Insurance  
 to see if you qualify.

Morris Clemmons, Jr. Agent  
 Clemmons Insurance Agency  
 Insurance • Real Estate • Appraisals  
 102 S. Charlton Woodville 283-2514



## Tyler County Merchant Council To Be Formed

1. Madeup of outstanding individuals from townships and municipalities in the county directly or indirectly involved as merchants business persons and/or community personalities.

2. Councilpersons will be a direct line between their community, chamber president and the board of directors.

3. Council persons will be point of focus and leadership for individual community efforts, what ever they be.

4. Councilpersons will be the source of two way communication between community and chamber as to needs, problems, promotions and support.

5. When council meets, meeting will be chaired by chamber president for that year.



### "They pay tops."

"At Jasper Federal you can bet I'm getting the top return on my savings. I work hard for my money and deserve the difference."

We pay the maximum interest allowed by law on savings.

**J. JASPER FEDERAL**  
SAVINGS AND LOAN ASSOCIATION  
SINCE 1934

You deserve the difference.

271 East Lamar, Jasper, Texas 75951 (713) 384-2594  
Branch offices: Woodville, Newton, Lumberton, Kirbyville

**Money Market Certificates**

the higher interest than average weekly discount rate for 6 month U.S. Treasury Bills, \$10,000 or more, 6 month maturity

**\*8%**

annual interest 8% year C.D. \$1,000 or more compounded daily, paid quarterly annual yield 8.03%

**\*7<sup>3</sup>/<sub>4</sub>%**

annual interest 7<sup>3</sup>/<sub>4</sub>% year C.D. \$1,000 or more compounded daily, paid quarterly annual yield 7.86%

**\*7<sup>1</sup>/<sub>2</sub>%**

annual interest 7<sup>1</sup>/<sub>2</sub>% year C.D. \$1,000 or more compounded daily, paid quarterly annual yield 7.75%

**\*6<sup>3</sup>/<sub>4</sub>%**

annual interest 6<sup>3</sup>/<sub>4</sub>% year C.D. \$1,000 or more compounded daily, paid quarterly annual yield 6.98%

**\*6<sup>1</sup>/<sub>2</sub>%**

annual interest 6<sup>1</sup>/<sub>2</sub>% year C.D. \$1,000 or more compounded daily, paid quarterly annual yield 6.75%

**\*5<sup>3</sup>/<sub>4</sub>%**

annual interest 5<sup>3</sup>/<sub>4</sub>% 90-Day Passbook account \$500 or more compounded daily, paid at term end annual yield 5.92%

**5<sup>1</sup>/<sub>4</sub>%**

annual interest 5<sup>1</sup>/<sub>4</sub>% Passbook account, interest earned from day of deposit to day of withdrawal actual yield 5.38%

\*Federal regulations require a substantial penalty for early withdrawal of certificates of deposit

Member ESLIC

## Best Wishes to the Tyler County Chamber of Commerce

Magnolia Drive In Groceries  
North, South, West

## Roads Improvement On

The State Department of Highways and Public Transportation is planning the upgrading of U.S. Highway 66 between F.M. 418 in Kountze and State Highway 63 in Zavalle. The proposed improvements, primarily consist of widening the sections of road that are now only 20 feet wide to provide a modern 2 lane facility with surfaced shoulders over the entire length. The plan also provides for replacement of the railroad underpass at Warren and the Neches River bridge at Rockland. An informal Public Meeting was held in Woodville on January 26, 1978 to discuss the proposed work. In February and March, opportunity was afforded interested citizens to request that a public hearing be held. There were no requests. The State Department of Highways and Public Transportation has certified that the public hearing requirements of the State's Action Plan have been fulfilled. Work was received this week that the Federal Highway Administration has accepted this certification. Highway Engineers are proceeding with development of detailed plans for these improvements with the intent of having all of the work completed or under construction within the next five years. It is anticipated that a contract for reconstruction of the Neches River Bridge and Approaches will be let early in 1979. Work has already begun on widening Cypress Creek Bridge near Hillister.

Best Wishes To The Tyler County Chamber Of Commerce

"Jr. Fashions For The Young At Heart"

Lollypop Boutique

1304 W. Bluff 283-2741

SOME FOLKS HAVE ALL THE FUN!

# DOGWOOD COUNTRY

WOODVILLE, IN SCENIC SOUTHEAST TEXAS HILLS

- CHAMPIONSHIP GOLF COURSE** \*
    - RENTAL CARTS & EQUIPMENT, PRO SHOP
    - TOURNAMENT III
  - TENNIS COURTS** \*
    - LIGHTED LAYKOLD SURFACE, PRO SHOP
    - OLYMPIC
  - SWIMMING POOL** \*
    - HI/LO DIVES, AQUA SLIDE, WADE POOL
    - COMPETITION III
  - SHOOTING RANGE** \*
    - TARGETS, SKEET & TRAP, PISTOL & RIFLE
    - REGULATION III
  - ARCHERY FIELD** \*
    - LESSONS, TARGETS, RENTAL EQUIPMENT
- MEMBERS, GUESTS & TOURISTS WELCOME

\* COME JOIN US AT.....

**DOGWOOD COUNTRY CLUB & RECREATIONAL RESORT**

U.S. HIGHWAY 190, 3 MILES WEST OF WOODVILLE, TEXAS  
BETWEEN HERITAGE VILLAGE & THE INDIAN RESERVATION  
TELEPHONE 1-713-283-3022 / P.O. BOX 774, 75979

**SONIC**  
Happy Eating

HAMBURGERS  
ONION RINGS

No Waiting!  
Call in Advance  
283-3601



## Here Are Your New 1979 Chamber Directors

*Bud Byram, President*  
*Tom Knapp, Vice President*  
*Bob Boykin*

*Lawrence Upchurch*  
*Robert Woods*  
*Clyde Bennett*

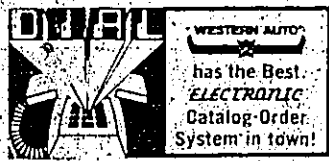
*Bertis Best*  
*Ray Krause (Deceased)*  
*Joe Riley*

*Don Stevenson*  
*Eunice Bohannon*  
*Harold Davis*

*Jim Grimes*  
*Bruce Latiolais*  
*Fred Sullivan*



We'll be good to you!



We Salute Our Chamber

H.E. & Ruby Whitacre  
Western Auto

216 W. Bluff

283-2131

## Doug's Auto Sales

We Support Our Chamber

Doug And Jerry Tolbert,  
Owners

410 N. Magnolia 283-3650

In 1979  
We Pledge  
Our Support  
to the  
Tyler County  
Chamber  
of  
Commerce

**Woodville  
Lumber Co.**

# Growing With Tyler County



**Pledged To  
Serve You Even  
Better In 1979**

## JACK LANE FORD, INC.

104 Pine

283-2526