

Welcome DETDA Guests!

# The Tyler County BOOSTER

Vol. 52 2 Parts Thursday, July 26, 1979  
No. 30 16 Pages Woodville, Texas 75779



GSU's Dr. Linn Draper

## Browder Here Thursday To Assess Gas Shortage Woes

AUSTIN—Representative Jim Browder has announced plans to hold public hearings in each of the five counties in District 16 to discuss the problems relating to fuel shortages and allocations in these areas.

Browder said, "My office receives calls everyday from farmers, business people, service station operators, gas distributors, private citizens and government officials who are concerned about their inability to get gasoline." He added that his attempts to obtain information and assistance from the Governor's Fuel Allocation Office have been most unsatisfactory.

As a result of this situation, Browder is planning to go to Austin to speak to the Governor and his fuel allocation people directly.

In preparation for these meetings, Browder is holding hearings so that he will know first-hand the problems which exist in the five counties he represents.

Browder added, "I want to invite all of the citizens in these counties to meet with me to discuss this critical fuel situation. I want to be able to give the Governor specific information about what is happening in my counties."

## Property Owners To File TPUC Protest Petitions

Attorneys for the Ivanhoe Property Owners' Improvement Association, Inc. will file protest petitions with the Texas Public Utilities (TPUC) Commission this week and request that the TPUC review water rates charged by the Associate Utilities Company, according to Robert Haime, President.

The petitions carried the names of more than 100 Ivanhoe property owners who are protesting present rates they consider excessive, he said.

The Association attorneys recommend payment of the monthly charge but also recommend Ivanhoe residents not pay the metered rate until the situation is clarified with the TPUC, he added.



HERE THURSDAY—State Representative Jim Browder is scheduled to appear as the featured speaker at the Thursday, July 26, noon luncheon meeting of the Woodville Lions Club. Following that engagement the Representative will hear comments from Tyler Countyans at the Tyler County Courthouse beginning at 1:30 p.m. Gasoline dealers, farmers and other consumers are expected to visit with the Representative at that time.

## Nuclear Specialist Is Speaker

Rex Spencer, President of the Deep East Texas Development Association, announced today that the regular monthly meeting of the Association will be held in Tyler County. The meeting will be held on Friday, July 27, 1979 at 10:00 A.M. at the Dogwood Country Club. The Club is located two miles west of Woodville U.S. Hwy. 190. Spencer stated there will be an Executive Board meeting at 9:30 A.M. just prior to the monthly meeting.

Spencer said, he was pleased to announce that Dr. E. Linn Draper, Jr., Technical Assistant to the Chairman of the Board of Gulf States Utilities Company would be the principal speaker at this monthly meeting. Prior to February 1979, Draper was an associate professor in the College of Engineering at the University of Texas in Austin. While at the University of Texas he was the Director

of the Nuclear Engineering Program from 1971-1979. Dr. Draper has served as a consultant to over thirty electric utility companies, E.R. Johnson Associates, Radiation Management Corporation and Energy Engineering Associates. He has presented testimony on nuclear power in the states of California, Texas, Pennsylvania, Wisconsin, Florida and New York, as well as before committees of the U.S. Congress.

He received his BA in 1964 and BS in Chemical Engineering in 1965 from Rice University and PhD in Nuclear Engineering from Cornell University in 1970. His fields of specialization are nuclear waste management and public understanding of nuclear energy.

## Woodville I.S.D. Considers Gas-Oil, Milk - Bread, Bank Deposit Bids

The Woodville Independent School District Board of Trustees, during their regular meeting Tuesday, July 17, opened bids for gas and oil, milk and bread, and a new tractor for the 1979-80 school year.

Two bids were presented to the board for the supply of fuel and oil to the school district. Bill Dover of Jasper, in submitting his bid, stated that all prices quoted were of July 9, and subject to change. He bid: 63.44 per gallon for regular gasoline. Motor oil prices were placed at \$12.96 per gallon by the case and \$105.60 per gallon by the drum.

Gulf Oil also stipulated with their bid that prices were not firm and would possibly change. Gulf did not specify a price on their bid for gasoline. The asking price for motor oil was \$11.96 per gallon, by the 55 gallon drum or

\$2.31 per gallon by the case. Board Secretary Fred Sullivan moved to accept the bid from Bill Dover and the Board unanimously concurred.

Bids for milk and bread for the school lunchroom during the 1979-80 school year were also opened during the meeting. Rainbo bakeries was the only bidder for bread, and their bid of 46¢ per 1/2 lb. for sandwich bread, was accepted by the board.

Land-O-Pines and Nelson-Barbo placed bids on milk with bids on 1/2 pint cartons as follows: Land-O-Pines, 15.5¢; Nelson-Barbo, 13.3¢. On a motion from Beth Allison, the Board accepted the bid from Nelson-Barbo.

Citizens State Bank representative Carey Cruse submitted the banks' new bid for the school depository contract. The new bid was necessitated by the recent change in the School Deposit

Act. The old act, according to Woodville Independent School District Superintendent Tom Linnam, has been done away with entirely. The new Act states that any School Board can take bids from any bank in Texas, he said.

Bud Allison moved, and the board voted to accept the new bid from Citizens State Bank.

Bids were also opened on a new tractor to be used to mow the school grounds. The board rejected all bids and voted to offer the job to the Vocational Agriculture students. This motion passed.

After acting on routine agenda items, the board went into executive session to accept resignation of professional personnel approved by the board.

Professional personnel to fill existing vacancies, discuss the Ernie Newberry litigation, and discuss some contract for professional personnel.

## Lions Rodeo Is Aug. 10-11

In preparation for the 1979 Tyler County Lions Rodeo on August 10 and 11, Clinton Currie, President of the association and local County Agricultural Agent, has been able to proceed with some improvements at the local 4-H - FFA Arena. A new restroom is under construction at the Southeast corner of the covered arena stands and will be completed for use by rodeo time.

Additionally, facilities in the arena have been changed so that the team roping, calf roping and steer wrestling events will be run from specially constructed chutes on the South end of the arena while the bucking events will be run from the North end of the arena, thereby making all of the events equally attractive from a spectator standpoint.

The 1979 event will again be produced by Ivy Rodeo Company of Fairfield, Texas, who owns some of the finest stock in the country and specifically has stock chosen to participate in the National Final Rodeos in December at Oklahoma City. Bradford Ivy, President of the company, was the co-producer of the 1979 Fort Worth Rodeo and headed the recent YMBL event in Beaumont.

Joe Jordan, Chairman of the Queen Contest, has announced that he expects a bevy of beautiful young horsewomen from the East Texas area to enter.

All of the Tyler County Lions Clubs, Chester, Dan E. Fred, Spurger and Woodville, have advanced tickets, both reserved and general admission, on hand for sale. Contact any Lion in Tyler County to get your choice seat for either of both Friday and Saturday night performances.

The Active Corps of Executives and the Small Business Administration will sponsor a workshop on the BASICS OF RUNNING A SMALL BUSINESS at the University of Houston Community Education Center, 4800 Calhoun, Entrance No. 1, on July 25 & 26, 1979, from 6:00 PM till 9:30 PM, each evening. For further information, call 226-4945.

An Equal Opportunity Program.

County Tax office closed for Construction, Friday, July 27, and Monday thru Wednesday, July 30-August 1. It will be open for vehicle registration only in the County Treasurer's office for these days.

## BOOSTER BRIEFS

### Called Meeting

A special called meeting Saturday, July 28 at 7 p.m. of the Magnolia Lodge AM and EM will be held on

### Pryor At Pageant

Maggie Pryor attended the Miss Mississippi State Pageant last weekend in Vicksburg as a guest of the pageant board. Mrs. Pryor is on the official judges list for local pageants in Mississippi. Dorothy Benham, Miss America 1977, was the Emcee and special guest.

### Alter Society To Meet

The Altar Society of Woodville United Methodist Church will meet Thursday, July 19, at 7:30 p.m. in the educational building. All members are asked to be there, and if any have clothes for the Mae Belle clothes closet, please bring them.

### It's A Boy!

Dr. and Mrs. Harold Herrington of Woodville announce the birth of a son, David, born Friday, July 20, 1979 at 12:25 p.m. The child weighed 7 lbs. 13 1/2 ounces.

### Odom Reunion Aug. 4

The Odom Reunion will be on Saturday, August 4, at the Old Odom Church at Pleasant Hill. Everyone is invited and bring basket lunch.

### Seaman Holeman Graduated

JULY 17—Navy Fire Control Technician Seaman Herbert H. Holeman, Jr., son of Mildred Powell of Star Route, Woodville, Texas, was graduated from Fire Control Technician school.

During the 23-week course at the Naval Training Center, Great Lakes, Ill., he received instruction on the electronic weapons systems installed aboard current U.S. warships. He studied the operating principles and procedures of radar, digital computers and related shipboard equipment used to control the firing of guns, missiles and torpedoes.

## 'Seeking Texas Treasures' Is Library Program

A special "Seeking Texas Treasures" program has been arranged for 4:00 p.m. Thursday (July 26th) for the older children of the Altar Shivers Chapter of the Texas Summer Reading Club.

Students who will be in grades four and up next year are invited to attend this program at the library. Refreshments will be served. Membership in the Texas Reading Club is not necessary.

T.E. Phillips, who formerly served with the border patrol in the Rio Grande Valley, will tell some true stories of Pancho Villa days.

David Lelkowitz will present a slide sequence showing bugs, flowers, birds, and other nature phenomena of Tyler County and the Gulf Coast.



GREEN RECOGNIZED FOR 30 YEARS OF SERVICE. Art Green (right), staff forester with the Texas Forest Service, a part of the Texas A&M University System, in Woodville, was recognized and presented the Texas Forest Service's Service Award for 30 years of continuous service. Green was presented the award recently at an awards ceremony in Woodville, by Bruce Miles (right), associate director with the Texas Forest Service. (22-071779-1P) OFFICIAL TEXAS FOREST SERVICE PHOTOGRAPH



### The Consumer Alert

by Mark White  
Attorney General

Does your landlord have a repair that is so long as the dots-to-repair damages or tenant lives-on-the-leasees defects in your apartment or the full rental rate must be paid-house? Can you stop paid?

The law also provides that if the landlord fails to repair or defects in questions-and-repairs, the landlord has answered the question, no-duty-to-be-repaired-until 11:30, 1979 in the morning, the insurance has been canceled, of the 20th Legislature, and the landlord is liable for the damage or defect in the house. If the landlord fails to repair or defects in the house, the tenant may sue the landlord for damages or defects in the house. The law also provides that if the landlord fails to repair or defects in the house, the tenant may sue the landlord for damages or defects in the house.



## T-Wheeler

By Alan Miller

There are some communities in this country who are moving toward energy conservation without waiting for a band-aid fix from Washington.

We spent several years in the state of Oregon and were often amazed at their energy conservation program before it was recognized nationally.

As a result, water pollution was attacked years before the EPA came into existence.

## The Speaker Reports

by Bill Clayton

ASTIN—Several important bills in the field of Natural Resources were passed by the House during the sixtieth legislative session. The House passed many bills to set up or expand the powers of a number of water and other entities.

### Tax Appeal Booklet In Reprint

AUSTIN, TEXAS—State Comptroller Bob Bullock Monday said widespread acceptance of a new system for handling tax appeals in the Comptroller's office has caused a need to reprint a booklet detailing the procedure for taxpayer use.



## Colmesneil News

The weekend of Colmesneil was filled with affairs of a number of organizations. Coming from various parts of the state, a number of members of the Sturrock family and their friends gathered at the Community Center on Saturday for a joyous day of feasting and visitation.

### Announce Marriage

The first Baptist Church of Woodville was the setting for the double ring ceremony uniting Genia Louise Daniel and Terry Wayne Macon in holy matrimony on July 21, 1979 at 7:00 p.m.

### Engagement Announced

Mr. and Mrs. Herman E. Yawn of Fred, Texas announce the engagement and approaching marriage of their daughter, Janet Danice to Mr. Timothy Ward Bush, son of Mr. and Mrs. Ward H. Bush of Silsbee, Texas.

### Completes Test

FORT KNOX, KY. (AP) — National Guardsmen here today completed Phase I of the 1979-80 test of the Army's new M16 assault rifle.

## TOPICS AND TECHNIQUES

### Stay Cool In Summer

Drink plenty of liquids to stay cool during hot summer months.

Experiment with variety of fruit juices.

Buttermilk in equal parts with fruit juice makes a pleasant cooler or shake.

### Recipe Of The Week

Remember this refreshing orange drink with breakfast on the run.

1/2 cup orange juice  
1/2 cup milk  
1/2 cup water  
1 cup sugar

### 'Nutrition Today - Weight Control Tomorrow

Families can change eating habits as a result of overeating, as explained in the latest in the series, "Nutrition Today - Weight Control Tomorrow," the series is available from Liz Rackley, Tyler County Extension Agent.

### Your Opinion

Is Important!

Write A Letter To The Editor

Write To The Editor

## COOPERATIVE EXTENSION WORK IN AGRICULTURE AND HOME ECONOMICS

The Texas A&M University System and United States Department of Agriculture Cooperating

Please enroll me in the Nutrition Today-Weight Control Tomorrow letter series.

Name \_\_\_\_\_  
Address \_\_\_\_\_  
Phone \_\_\_\_\_

Clip and mail to: Liz Rackley, P.O. Box 297, Woodville, Texas 75799

### STATE CAPITAL HIGHLIGHTS

By Lyndell Williams  
TEXAS PRESS ASSOCIATION

"Smoke 'Em If You Got 'Em"  
The Texas legislature has passed a bill to allow the sale of menthol cigarettes in the state.

"Education Shake Up"  
The Texas Education Agency has announced a shake-up in the state public education system.

## The Tyler County BOOSTER

JOHN P. MORRISON, Publisher/Editor  
FLORENCE WILLIAMS, Reporter  
DIANE SITTON, Advertising Sales  
MARY JANE STOCK, Composition/Classified  
NANCY LANGLEY, Typesetter/Subscriptions  
MIKE & JUNE SIDORIC, Austin Bureau

Published every Thursday by Tyler County Publishing Company, P.O. Box 248, Woodville, Texas 75799. Phone: 283-2519.

Entered as second class matter at the Post Office in Woodville, Texas, December 11, 1930 under the act of Congress, March 2, 1879. Second class postage paid at Woodville, Texas.

Subscription Rates:  
Tyler County 4.00  
Polk, Angelina, Jasper & Hardin Counties 4.50  
Other Texas Cities & Louisiana 5.00  
Other States 6.00  
Overseas 8.00

Any erroneous reflection upon the character, standing or reputation of any person, firm or corporation appearing in this newspaper will be gladly corrected upon being brought to the attention of the publisher.

Postmaster: Please send form 3579 to P.O. Box 248, Woodville, Texas 75799.

MEMBER 1979 TEXAS PRESS ASSOCIATION

## Clements Designates Farm Safety Week

AUSTIN—Governor Bill Clements has designated the week of July 25-31 as Texas Farm and Ranch Safety Week. The purpose of the observance is to encourage renewed emphasis to make Texas farms and ranches a safer place to live and work.



### Wedding Set

Mr. and Mrs. Saint Ward of Colmesneil, Texas, announce the engagement and approaching marriage of their daughter, Janet Danice to Mr. Timothy Ward Bush, son of Mr. and Mrs. Ward H. Bush of Silsbee, Texas.

### Tommy L. Weaver & L. Wayne Smith

Announce the formation of a partnership for the practice of public accounting.

WEAVER & SMITH  
Certified Public Accountants  
404 South Magnolia, Woodville, TX  
283-2524

## Jo Ann Jordan and Citizens State Bank Together Helping Build Tyler County



Jo Ann Jordan - Teller - Note Department

Jo Ann, as a teller in the Note Department at Citizens State Bank stays busy helping bank customers, in addition to preparing a listing each day of all loans made.

## CITIZENS STATE BANK

COME MEET Your Neighbor

Altha Holt came home Saturday morning from several days in Fort Neches and Beaumont with relatives. She and Mrs. Mary Shettles are at home on a vacation in Arkansas and Mississippi.

Mr. and Mrs. Harold Murphy and Pat of Baytown were in town Saturday morning. Brother Elton Spurlock and family.

Altha Holt came home Saturday morning from several days in Fort Neches and Beaumont with relatives. She and Mrs. Mary Shettles are at home on a vacation in Arkansas and Mississippi.

Mr. and Mrs. Harold Murphy and Pat of Baytown were in town Saturday morning. Brother Elton Spurlock and family.

Each depositor insured to \$40,000

FDIC FEDERAL DEPOSIT INSURANCE CORPORATION

## Price - Stark United In Marriage

DALLAS—The marriage of Miss Mary Elizabeth Price of Irving, daughter of Rev. and Mrs. Byron Price of Livingston, and Ronald Marvin Stark of Dallas, son of Mr. and Mrs. Walter Stark of Rupert, Idaho, took place at 8 p.m. June 28 in West Shore Presbyterian Church in Dallas.

## Hillister News

We regret to repeat that J.B. Blidsoe, who is in Hillister, is in critical condition.

Mrs. Helen H. McNeil is at home after a visit with relatives in Huntsville, Mr. and Mrs. R.V. Gibbs of Huntsville brought her home and she will be here this week.

## Office Supply Center

USED PAPERBACK BOOKS

Cash sale - Half price  
Trade in - Bring two get one  
Books in excess of trade-in, half price.  
We can't accept torn or soiled books.

501 W. Bluff, 283-5164

## MHMR Offers Help For Parents Of Handicapped

Parents of handicapped or delayed infants, birth to three years, can get help in coping with the child, can now on their own terms, at the local office of Deep East Texas MHMR, at 311 S. Magnolia, Woodville, Texas. The unique new service offered by Deep East Texas MHMR is called "Parents of Handicapped Infants." The new service empowers parents and provides the "important" information as to what the infant's required as soon as a delay is detected. The parent can be trained in the advanced techniques for working with the child at home, and the special attention given to the MHMR trainer and the parent's role in the child's development.

## Contract Awarded To Provide Family Care Services

A contract has been awarded to provide family care services in the Tyler County area. The contract is for the provision of services to the handicapped and the elderly in the county. The services to be provided include: home care, respite care, meal services, and transportation. The contract is for a period of one year, with an option for renewal. The services will be provided by a private contractor, who will be responsible for the selection and supervision of the service providers. The contract is valued at approximately \$100,000 per year. The services are being provided to the handicapped and the elderly in the Tyler County area. The services are being provided by a private contractor, who will be responsible for the selection and supervision of the service providers. The contract is valued at approximately \$100,000 per year. The services are being provided to the handicapped and the elderly in the Tyler County area.

## Hidden Sugars And Fats Add Calories

COLLEGE STUDENTS are being warned about the hidden sugars and fats in many of the foods they eat. The warning comes from the National Heart, Lung, and Blood Institute, which is part of the U.S. Department of Health and Human Services. The institute says that many of the foods that students eat, such as soft drinks, fast food, and processed meats, contain a lot of hidden sugars and fats. These hidden sugars and fats can add a lot of calories to the diet, which can lead to weight gain and other health problems. The institute recommends that students eat a diet that is low in fat and sugar, and high in fiber and complex carbohydrates. This means eating more fruits, vegetables, and whole grains, and less meat, dairy products, and refined grains.

**THE RUTH-BERRY JET PUMP**  
IT'S A PUMP IN A TANK

Constantly Submerged Portable Unit  
Can't freeze  
Eliminates contaminants

Maintenance-free  
No moving parts  
No oil  
No electrical wiring  
No hot surfaces  
No pumps available

**PARGAS**  
311 S. MAGNOLIA  
WOODVILLE, TEXAS  
281-2378



Lyle Tidwell

## Doucette Student Named Baptist Student Missionary

ATLANTA, Georgia (AP) — Miss Doucette, a student at the University of Georgia, has been named a Baptist Student Missionary. She will be working in the field of international missions. She is a member of the Baptist Church and has been active in her church's mission program. She is currently a student at the University of Georgia and is majoring in education. She is expected to graduate in the fall of 1979. She will be working in the field of international missions for a period of two years. She is currently working in the field of international missions for a period of two years.

## Lyle Tidwell Joins Kirby Staff

C.B. Stevens, Vice President-Manufacturing of Kirby Forest Industries, Inc., is pleased to announce the addition of Lyle Tidwell to his management staff as Resident Manager-Cleveland Division.

Tidwell, a graduate of the University of Oregon, comes to Kirby from previous management assignments with Holly Hill Lumber Company, Holly Hill, South Carolina and Georgia-Pacific Corporation, Taylorsville, Mississippi.

Tidwell is the recipient of several safety awards from the American Plywood Association and has served on the Board of Directors of Orangeburg Technical College, Orangeburg, South Carolina.

**Happy Birthday**  
**Lollipop**

**The Lollipop Boutique**  
is having a  
**Birthday Celebration**  
July 27 - August 4

Basketful of Bargains Throughout The Shop

- Shirts •Dresses •Shorts •Sleepwear •Sportswear •Coordinates
- Children's Dresses •Jeans •Shorts •Tops •Infant Wear

Shop Daily For Red Hot SPECIALS

Register For:  
**DOOR PRIZES**

1st	\$75.00 Gift Certificate
2nd	\$35.00 Gift Certificate
3rd	\$20.00 Gift Certificate

Drawing Held August 4 - 3:00 p.m.

1304 W. Bluff 283-2741



**"I trust them."**

Jasper Federal has taken care of my family's savings for years. I feel like they're protecting our money and at the same time paying us the best interest. They've always treated us like close friends, and we appreciate it.

We pay maximum interest allowed by law on savings. And we always will. You can depend on it.

## J. JASPER FEDERAL

SAVINGS AND LOAN ASSOCIATION SINCE 1924

**You deserve the difference.**

271 East Lamar, Jasper, Texas 75651 (713) 384-2561  
Branch offices: Woodville - Newton - Lumberton - Kirbyville

Money Market Certificates		4 Year Money Certificates	
interest based on the average weekly discount rate for 90-day U.S. Treasury Bills \$10,000 or more, 6 month maturity	8%	interest 1% below the average monthly U.S. Treasury securities, \$200 minimum. Current rate 7.25% annual interest requires a 95% effective annual yield.	5 1/2%
8% annual interest 8 year C.D. \$500 or more compounded quarterly annual yield 8.33%	7 3/4%	annual interest 2 1/4 year C.D. \$500 or more compounded quarterly annual yield 7.75%	6 1/4%
7 1/2% annual interest 4 year C.D. \$500 or more compounded quarterly annual yield 7.66%	7 1/2%	annual interest 1 year C.D. \$500 or more compounded quarterly annual yield 7.5%	6 1/2%
6 3/4% annual interest 2 1/2 year C.D. \$500 or more compounded quarterly annual yield 7.38%	6 3/4%	annual interest 90-day Passbook account \$500 or more compounded daily paid quarterly annual yield 6.92%	5 3/4%
6 1/2% annual interest 1 year C.D. \$500 or more compounded quarterly annual yield 7.12%	6 1/2%	annual interest Passbook account: Interest earned from day of deposit to day of withdrawal annual yield 5.5%	5 1/2%

\*Federal regulations require a substantial penalty for early withdrawal of certificates of deposit.

Member FSLIC



The renown Melody Maker Choir of the First Baptist Church of Woodville is shown here just after a tour to one of the Chautauquas at Ridgecrest, North Carolina in October 1978. They sang in churches in Mississippi and Missouri on the way to the Chautauquas, according to Choir director and coordinator Phil Sherrard.

The latest venture of the Melody Makers involves a nine day trip to Seattle, Washington and Victoria, British Columbia, August 6-14, 1979. The choir will provide music for a senior adult retreat at Mt. Baker Baptist Assembly near Bellingham, Washington. Also, according to Sherrard, the choir will spend two days in Victoria.

Most of the choir have never flown before and they are making the trip at their own expense, he said.

## UT Offers Yiddish

AUSTIN, TEXAS (SPL) — University of Texas, There's more than a Texas hint of Yiddish, too, to be heard at The UT Austin, the only European Jewish university in the are offering credit for studies in Yiddish, the Germanic-language of East European Jews.

Dr. Stephen Garin leads the fledgling Yiddish program which has been around off and on since 1970. He hopes to expand it further into a serious area of study.

In addition to several courses in the language itself, Dr. Garin eventually hopes to introduce courses in the Jewish contribution to English and Yiddish, courses in folklore and literature, and even offer a film festival.

## Senator Lloyd Bentsen Watching Washington

Good timing often means the difference between a successful venture and a fiasco.

Farmers and businessmen know the importance of timing. Take wheat farmers, for example. They have learned that it makes no sense for them to sell their wheat to a middleman as soon as it is harvested only to have him store it, then sit back and wait for the price to go up before he sells.

Modern day farmers have greatly increased their storage capacity so they can hold onto their own wheat and wait for the right time to sell.

Over the past several months, though, a growing rail car shortage in this country has thrown off the timing of farmers and businessmen and anyone else trying to transport goods to the marketplace.

How bad is the rail car shortage? It's very bad and expected to get worse, at least for the next couple of years.

The Senate Agriculture Committee heard testimony last year about a survey of 30 warehouses in West Texas and Oklahoma. The survey showed that while 4,900 boxcars were ordered over a four week period, less than 1,700 were provided.

On a single day during the spring of 1978 fifteen companies and warehouses in the Amarillo area ordered 241 rail cars but only 39 were furnished.

The American Railcar Institute reported a domestic rail car manufacturing backlog of over 96,000 units as of this past January 1st—an increase of 20,000 units since last year. Domestic producers are scheduled to deliver approximately 84,000 units during 1979, which would result in a carryover backlog of 12,000 units at the end of the year.

When you consider that the number of new rail cars ordered from domestic manufacturers has more than tripled since 1976, it doesn't take a genius to figure that new carriers this year added to the carryover backlog equal a continuing shortage at least through next year.

Again this year I have proposed legislation that would ease this shortage of railroad cars by suspending for two years an 18 percent tariff on cars imported from Mexico. The Bentsen bill is being cosponsored by four of my colleagues.

A similar bill that I proposed last year was approved by the Senate but failed to gain approval in the House of Representatives. The prospects for passage look brighter this year, though, since the economic impact of the shortage is being felt more widely and since we have gained some important new allies, including the Association of American Railroads.

The problem is this: under U.S. tariff laws, Mexico is allowed to export rail cars to this country, without paying any duty, so long as their shipments do not exceed 50 percent of all rail cars imported by the U.S.

Early last year Canada stopped exporting rail cars to us where a shortage developed in that country. So, as of March 1, 1978 Mexico exceeded the 50 percent limitation and the prohibitive 18 percent tariff was imposed.

In addition to easing a troublesome transportation bottleneck in this country, there is a second significant aspect to my legislation which pertains to our relations to Mexico.

Mexico is not only our closest neighbor to the south, but our fifth largest trading partner in the world.

To the extent that we are able to encourage increased freight car imports from Mexico—at a time when we really need more freight cars—we create additional employment opportunities in that country. And we demonstrate to our friends there that the United States of America is willing to pursue new areas of cooperative endeavor with its neighbors.

I want to stress that my bill does not seek to abolish the import quota entirely, rather to suspend it for two years.

I am convinced that, ultimately, American manufacturers will be able to rise to the occasion and produce enough rail cars to meet the transportation needs of our farmers and businessmen.

But for now, given the existing backlog of orders, the continuing demand for new cars and the fact that the domestic industry is producing at capacity, the only way to ease the immediate shortage is to import more freight cars from Mexico.



ROCKY SPRINGS BAPTIST CHURCH IN ROCKLAND, pastored by Kenn Freehand, dedicated their new steeple Sunday, July 22. The steeple tops off much hard work and dedication by the people of the church and represents the progress they have made in building the church into an important part of the community.

Produced by IRVIN FELD and KENNETH FELD

**TUE. SUN.**  
**JULY 17-JULY 29**  
**THE SUMMIT**

**PERFORMANCES**

★ OPENING NITE ★  
KPRC-TV FAMILY NITE

**Save \$2.00 on all Tickets**

Wed. JULY 18	8:00 PM
Thu. JULY 19	8:00 PM
Fri. JULY 20	8:00 PM
Sat. JULY 21 11:00 AM	8:30 PM
Sun. JULY 22	2:00 PM
Mon. JULY 23	NO PERFORMANCES
Tue. JULY 24	8:00 PM
Wed. JULY 25	8:00 PM
Thu. JULY 26	8:00 PM
Fri. JULY 27	8:00 PM
Sat. JULY 28 11:00 AM	8:30 PM
Sun. JULY 29	2:30 PM

★ Save \$1.00 on Kids Under 12! ★  
All Seats Reserved: \$4.50-\$6.00-\$7.00  
For Information Ph (713) 961-9003  
For Groups Ph (713) 627-9470

**TICKETS ON SALE AT:**

THE SUMMIT BOX OFFICE  
(Edloe Street) ALL 3 SAGE STORES • JOSKES POST OAK  
TOP TICKET: Montgomery Wards, Warehouse Records & Tapes, Houston Ticket Center — Jones Hall, Greenway Plaza Underground, Celebrity Circle Theatre

**CHARGE TICKETS BY PHONE!**  
CALL (713) 627-9452

**OUT OF TOWN**  
CALL (800) 392-9621

Or your VISA or American Express

**ORDER TICKETS BY MAIL!**  
Make check or M.O. payable to: The Summit Box Office, 10 Greenway Plaza, Houston, TX 77046.  
Please indicate day, date, and performance time desired. Enclose stamped, self-addressed envelope for prompt return of tickets.

## Vets Will Lose Benefits Soon

Many Vietnam Era veterans will lose their GI Bill education benefits this year. The Veterans Administration is trying to notify all eligible veterans before it is too late.

Regional Office Director in Houston, Texas, says, "Most veterans are unaware of their GI Bill education benefits. It is my job to tell them."

The Veterans Administration is trying to notify all eligible veterans before it is too late. The Veterans Administration is trying to notify all eligible veterans before it is too late.

Old Fashion <b>ICE CREAM</b> 1/2 Gal. \$1.39	Grade A Large <b>EGGS</b> 79¢ Doz.
Tall Carnation Can <b>CREAM</b> 49¢	Crisco <b>SHORTENING</b> 3# \$2.89
Del Monte <b>PINEAPPLE CHUNKS</b> 15 Oz. Packed in own juice 59¢	Del Monte Cream Style <b>CORN</b> 39¢
Del Monte <b>ASPARAGUS</b> Size 303 Can \$1.59	Grammer's <b>Grocery</b> 1403 W. Bluff Woodville 283-2520
Hunt's <b>TOMATO SAUCE</b> 49¢ 15 Oz.	Gt. Size <b>TIDE</b> \$1.99 Fresh <b>LETTUCE</b> 39¢ Head
Fresh Ground <b>HAMBURGER</b> \$1.79	Wilson Foods <b>WIENERS</b> \$1.39
Fresh Pork <b>SPARE RIBS</b> \$1.59	Boneless <b>CHUCK STEAK</b> \$2.19
Sliced Slab <b>BACON</b> \$1.69	<b>FILET MIGNON</b> \$2.99 10 Oz. Each
Fresh Pork Pan <b>SAUSAGE</b> \$1.59	Fresh <b>PORK BACKBONE</b> \$1.99
	Decker <b>PICNIC HAM</b> 79¢



### First Baptist Colmesneil To Hold Revival July 29 - Aug. 1

### Enzymes Aid Heart

ATLANTA, Texas (SPL) - Lects the hearts of cancer-increased the heart's ability patients against the cancer of fatty blood and there stability of a cancer drug by vitamin energy... as one (adriamycin) without lessening the finding university of the drug's ability to fight cancer researchers have made turns.

### OBITUARIES

#### MARYLY BUCHANAN

MARYLY BUCHANAN, 58, died at 10:15 a.m. Thursday, July 19, 1979, at 2:00 p.m. in the Texas State Hospital, San Antonio, Texas. She was born in Texas and had been in the Tyler County Jail for 18 years and 10 months.

#### CHARLIE PHILLIPS

CHARLIE PHILLIPS died Thursday, July 19, 1979, at 2:00 p.m. in the Texas State Hospital, San Antonio, Texas. He was born in Texas and had been in the Tyler County Jail for 18 years and 10 months.

#### MRS. DAGMA LEWIS FAIRCHILD

MRS. DAGMA LEWIS FAIRCHILD died Thursday, July 19, 1979, at 2:00 p.m. in the Texas State Hospital, San Antonio, Texas. She was born in Texas and had been in the Tyler County Jail for 18 years and 10 months.

## Message to Washington

HARD TIME GETTING A HARSHIP  
MISSAGI - I am writing you in reference to my application for a hardship discharge from the Army, which was turned down because of not enough justification. I feel this application was just reviewed and judged arbitrarily.

I know that if I remain in the Army, it will ruin my marriage and possibly my wife's health. I feel that I have been in the Army for 11 years and I am confident I can work out these problems. All I care about right now is my wife and my baby boy's health. I am asking for your help. R.M., Augsburg, Germany.

RADIO LICENSE FOR AN ALIEN  
MISSAGI - There is a three-year waiting period for a resident alien before he can become an American citizen. I have worked for the past 13 years in the British merchant marine as a radio and radar operator, but need a license from the Federal Communications Commission to maintain and operate electronic radio equipment in this country. However, I am required to be an American citizen to get an FCC license. In my case, that will not be before January of 1981. Is there anything you can do to help me, as a resident alien, obtain the proper license? C.B., Nederland.

SENATOR BUSTIN'S RESPONSE: The FCC advises me they may issue licenses to aliens in only two cases: when the alien is an aircraft pilot and needs the license to operate aircraft radios and when the alien owns a small business and needs a license to operate the radio on the boat. You do not, of course, need a license to operate a short-wave radio receiver, only transmitting equipment.

Do you have a problem with the government? MESSAGE TO WASHINGTON cuts through the red tape to get answers to your questions about Social Security, veterans benefits, immigration matters and other problems you may have run into in your dealings with the Federal Government in Washington. Write MESSAGE TO WASHINGTON, c/o Scripps, 2100 N. Lloyd Beales, U.S. Senate, Washington, D.C. 20510. Inquiries to MESSAGE TO WASHINGTON are sometimes edited before publication, but the intent and substance of the inquiries are maintained.

### FOR EVERY PROBLEM, THERE IS A SOLUTION

Such a predicament! Stuck in mud a foot deep! What to do? Just sit in it and wait? Writing your hands? Of course not! There is a solution. Obviously, this is a simple problem. But what about the enormous number of other "problems" that there is an answer to? There is! Just call for help in time of trouble. The Christian say, "Try. Help" - try Jesus. Feel His presence and let Him speak to you in church.



WOODVILLE MISSIONARY BAPTIST CHURCH: Pastor, Sunday School 9:45 a.m., Morning Worship 11 a.m., Bible Study 7 p.m., Wednesday Prayer Meeting 7 p.m.

WOODVILLE MISSIONARY BAPTIST CHURCH: Pastor, Sunday School 9:45 a.m., Morning Worship 11 a.m., Bible Study 7 p.m., Wednesday Prayer Meeting 7 p.m.

WOODVILLE MISSIONARY BAPTIST CHURCH: Pastor, Sunday School 9:45 a.m., Morning Worship 11 a.m., Bible Study 7 p.m., Wednesday Prayer Meeting 7 p.m.

WOODVILLE MISSIONARY BAPTIST CHURCH: Pastor, Sunday School 9:45 a.m., Morning Worship 11 a.m., Bible Study 7 p.m., Wednesday Prayer Meeting 7 p.m.

WOODVILLE MISSIONARY BAPTIST CHURCH: Pastor, Sunday School 9:45 a.m., Morning Worship 11 a.m., Bible Study 7 p.m., Wednesday Prayer Meeting 7 p.m.

WOODVILLE MISSIONARY BAPTIST CHURCH: Pastor, Sunday School 9:45 a.m., Morning Worship 11 a.m., Bible Study 7 p.m., Wednesday Prayer Meeting 7 p.m.

WOODVILLE MISSIONARY BAPTIST CHURCH: Pastor, Sunday School 9:45 a.m., Morning Worship 11 a.m., Bible Study 7 p.m., Wednesday Prayer Meeting 7 p.m.

WOODVILLE MISSIONARY BAPTIST CHURCH: Pastor, Sunday School 9:45 a.m., Morning Worship 11 a.m., Bible Study 7 p.m., Wednesday Prayer Meeting 7 p.m.

WOODVILLE MISSIONARY BAPTIST CHURCH: Pastor, Sunday School 9:45 a.m., Morning Worship 11 a.m., Bible Study 7 p.m., Wednesday Prayer Meeting 7 p.m.

WOODVILLE MISSIONARY BAPTIST CHURCH: Pastor, Sunday School 9:45 a.m., Morning Worship 11 a.m., Bible Study 7 p.m., Wednesday Prayer Meeting 7 p.m.



### Winky Foote

Winky Foote is a professional pianist and composer. She has performed in various venues and has composed several pieces of music. She is currently working on a new album.

### St. Paul's Episcopal Church

MORNING PRAYER 8:30 a.m. (Sundays) Holy Communion 8:30 a.m. First Sunday of Month SUNDAY SCHOOL 8:30 a.m.

WOODVILLE MISSIONARY BAPTIST CHURCH: Pastor, Sunday School 9:45 a.m., Morning Worship 11 a.m., Bible Study 7 p.m., Wednesday Prayer Meeting 7 p.m.

WOODVILLE MISSIONARY BAPTIST CHURCH: Pastor, Sunday School 9:45 a.m., Morning Worship 11 a.m., Bible Study 7 p.m., Wednesday Prayer Meeting 7 p.m.

WOODVILLE MISSIONARY BAPTIST CHURCH: Pastor, Sunday School 9:45 a.m., Morning Worship 11 a.m., Bible Study 7 p.m., Wednesday Prayer Meeting 7 p.m.

WOODVILLE MISSIONARY BAPTIST CHURCH: Pastor, Sunday School 9:45 a.m., Morning Worship 11 a.m., Bible Study 7 p.m., Wednesday Prayer Meeting 7 p.m.

WOODVILLE MISSIONARY BAPTIST CHURCH: Pastor, Sunday School 9:45 a.m., Morning Worship 11 a.m., Bible Study 7 p.m., Wednesday Prayer Meeting 7 p.m.

WOODVILLE MISSIONARY BAPTIST CHURCH: Pastor, Sunday School 9:45 a.m., Morning Worship 11 a.m., Bible Study 7 p.m., Wednesday Prayer Meeting 7 p.m.

WOODVILLE MISSIONARY BAPTIST CHURCH: Pastor, Sunday School 9:45 a.m., Morning Worship 11 a.m., Bible Study 7 p.m., Wednesday Prayer Meeting 7 p.m.

WOODVILLE MISSIONARY BAPTIST CHURCH: Pastor, Sunday School 9:45 a.m., Morning Worship 11 a.m., Bible Study 7 p.m., Wednesday Prayer Meeting 7 p.m.

WOODVILLE MISSIONARY BAPTIST CHURCH: Pastor, Sunday School 9:45 a.m., Morning Worship 11 a.m., Bible Study 7 p.m., Wednesday Prayer Meeting 7 p.m.

WOODVILLE MISSIONARY BAPTIST CHURCH: Pastor, Sunday School 9:45 a.m., Morning Worship 11 a.m., Bible Study 7 p.m., Wednesday Prayer Meeting 7 p.m.



### Come join with us in worship...

WOODVILLE MISSIONARY BAPTIST CHURCH: Pastor, Sunday School 9:45 a.m., Morning Worship 11 a.m., Bible Study 7 p.m., Wednesday Prayer Meeting 7 p.m.

WOODVILLE MISSIONARY BAPTIST CHURCH: Pastor, Sunday School 9:45 a.m., Morning Worship 11 a.m., Bible Study 7 p.m., Wednesday Prayer Meeting 7 p.m.

WOODVILLE MISSIONARY BAPTIST CHURCH: Pastor, Sunday School 9:45 a.m., Morning Worship 11 a.m., Bible Study 7 p.m., Wednesday Prayer Meeting 7 p.m.

WOODVILLE MISSIONARY BAPTIST CHURCH: Pastor, Sunday School 9:45 a.m., Morning Worship 11 a.m., Bible Study 7 p.m., Wednesday Prayer Meeting 7 p.m.

WOODVILLE MISSIONARY BAPTIST CHURCH: Pastor, Sunday School 9:45 a.m., Morning Worship 11 a.m., Bible Study 7 p.m., Wednesday Prayer Meeting 7 p.m.

WOODVILLE MISSIONARY BAPTIST CHURCH: Pastor, Sunday School 9:45 a.m., Morning Worship 11 a.m., Bible Study 7 p.m., Wednesday Prayer Meeting 7 p.m.

WOODVILLE MISSIONARY BAPTIST CHURCH: Pastor, Sunday School 9:45 a.m., Morning Worship 11 a.m., Bible Study 7 p.m., Wednesday Prayer Meeting 7 p.m.

WOODVILLE MISSIONARY BAPTIST CHURCH: Pastor, Sunday School 9:45 a.m., Morning Worship 11 a.m., Bible Study 7 p.m., Wednesday Prayer Meeting 7 p.m.

WOODVILLE MISSIONARY BAPTIST CHURCH: Pastor, Sunday School 9:45 a.m., Morning Worship 11 a.m., Bible Study 7 p.m., Wednesday Prayer Meeting 7 p.m.

WOODVILLE MISSIONARY BAPTIST CHURCH: Pastor, Sunday School 9:45 a.m., Morning Worship 11 a.m., Bible Study 7 p.m., Wednesday Prayer Meeting 7 p.m.

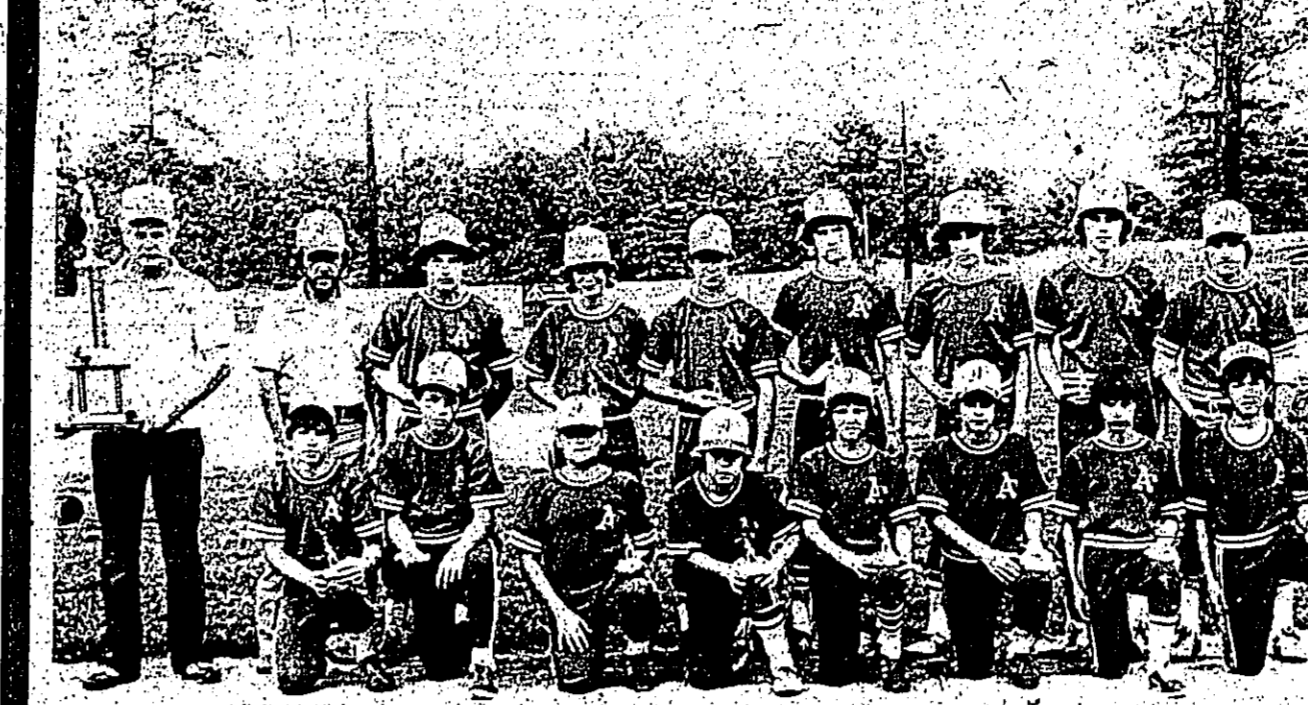
WOODVILLE MISSIONARY BAPTIST CHURCH: Pastor, Sunday School 9:45 a.m., Morning Worship 11 a.m., Bible Study 7 p.m., Wednesday Prayer Meeting 7 p.m.

WOODVILLE MISSIONARY BAPTIST CHURCH: Pastor, Sunday School 9:45 a.m., Morning Worship 11 a.m., Bible Study 7 p.m., Wednesday Prayer Meeting 7 p.m.

WOODVILLE MISSIONARY BAPTIST CHURCH: Pastor, Sunday School 9:45 a.m., Morning Worship 11 a.m., Bible Study 7 p.m., Wednesday Prayer Meeting 7 p.m.

WOODVILLE MISSIONARY BAPTIST CHURCH: Pastor, Sunday School 9:45 a.m., Morning Worship 11 a.m., Bible Study 7 p.m., Wednesday Prayer Meeting 7 p.m.

WOODVILLE MISSIONARY BAPTIST CHURCH: Pastor, Sunday School 9:45 a.m., Morning Worship 11 a.m., Bible Study 7 p.m., Wednesday Prayer Meeting 7 p.m.



WARREN BAND MEMBERS. The Warren Band is a group of musicians who perform at various events in the community. They are currently preparing for a new season of performances.

## Farm Income Tax Management Is Year Round Task

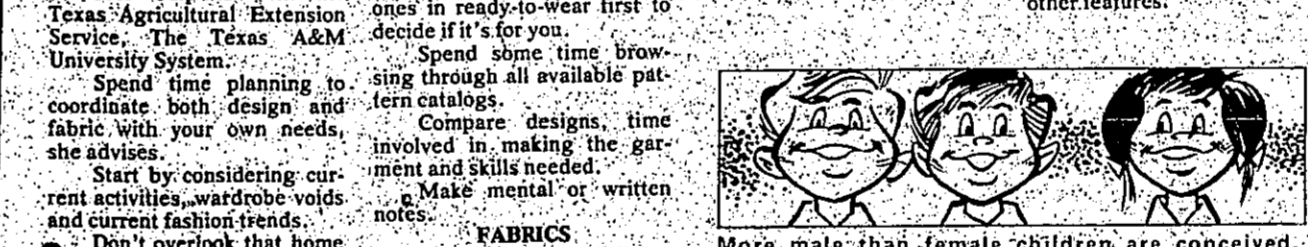
COLLEGE STATION - Income tax consequences of farm operations should be weighed year-round, contends Dr. Ashley Lovell, an economist with the Texas Agricultural Extension Service, Texas A&M University, System. However, unless tax-saving moves can be complete before the year's end, many tax management strategies will be lost.

## Weekly Agricultural Update

The watermelon harvest in East Texas is getting into full swing. Although the crop is a little late this year, quality seems to be good. Dr. George Miller, area plant pathologist for the Texas Agricultural Extension Service, says that Fusarium wilt is causing problems in some fields. The disease, which eventually kills the plants, can cause considerable decrease in yields.

## Garments Should Work Together

COLLEGE STATION - Make garments design and fabric work together. When you're home sewing, it's a clothing specialist. Ms. Culp is with the Texas Agricultural Extension Service, The Texas A&M University, System.



## WOODVILLE CONVALESCENT CENTER

## OGDEN CHEVROLET

## SOUTHEAST TEXAS SAVINGS & LOAN

## DAVIS FOOD MARKET

## McCLURE FURNITURE

## A & M MOTOR CO. INC.

## TYLER COUNTY BOOSTER SPORTS

## Warren Band To Begin Summer Band Clinic August 6

Edward T. Lee, the Warren Band Director, has announced that the summer band clinic will begin on August 6. The clinic will be held at the Warren High School campus and is sponsored by the Band Booster Club of Warren. Hours for practice will be 9:00-12:00 p.m. daily. Students should bring a sack lunch each day and fifty cents for refreshments.

## MANN FURNITURE

Since 1905... J.P. Mann Gen. Mer. 206 W. Bluff & Furn. 283-3740. ROLL CARPET SPREC. SAVE 15% TO 45%. Evans Black CARPET \$9.88 by Armstrong SPECIAL sq. yd. Short Saxony Shag Installed Over Pad. DIRECT FURNITURE SHOWCASE. Buy Direct and Save! 283-5211 302N. Magnolia

## SUMMER SERVICE

## Specials at KNAPP FORD SALES INC.

### FRONT END ALIGNMENT \$14.95

### AIR CONDITIONER CHECK-UP \$12.95\*

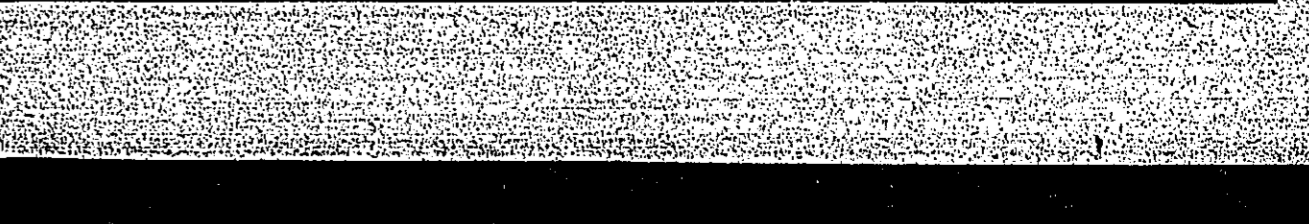
### SPIN BALANCE AND ROTATE ALL 4 TIRES \$15.95

### TRANS MISSION SPECIAL \$29.95

### FRONT DISC BRAKE SERVICE \$69.95 CHOICE

All prices good through Friday, Aug. 3, 1979. Call our service manager, Loyd Srader, for an appointment or we will service while you wait if possible.

## KNAPP FORD Sales Inc. 104 Pine St. 283-2526



THIS GROUP OF WOODVILLE GIRLS ages 7-12 are spending summer afternoons learning the fundamentals of twirling, dance steps and tricks. Later in the year they will be participating in area invitational contests.

# Woodville Ag Teacher To Be Honored



AUSTIN—Joe M. Glasscock, Vocational Agriculture Teacher, Woodville High School, will be honored by the Vocational Agriculture Teachers Association of Texas in Houston, July 31, according to Ray Carson, Garland, President of the organization.

Glasscock is being recognized for his 35 years of service to the Vocational Agriculture program in Texas. He attended East Texas State University, where he received his B.S. degree from Texas A&M University, College Station, and his M.E. degree from S.F. Austin State University, Nacogdoches. He also holds the Honorary State Farmer Degree in the Texas FFA Association.

The award will be presented at the Annual Awards Program of the Association. The program is held during the State In-Service Education Workshop for Vocational Agriculture Teachers and the 1979 Workshop will emphasize staying up with the changes in today's modern Agriculture. Leaders in Agriculture and Education from throughout the state and nation will participate in the four-day, in-service meeting. Education features of the meeting will be under the direction of Mr. J.A. Marshall, Director of Agriculture Education, Texas Education Agency. Austin, Marshall will be assisted by G.G. Scroggins, Assistant Director, Agriculture Education, TEA.

Glasscock has led and directed FFA students and agriculture students in exhibiting and receiving many awards and honors at teacher-ship contests, judging contests, livestock shows and other FFA events were held. These awards, trophies, banners, trophies, ribbons and certificates are on display in the respective agriculture departments where he has taught.

Mr. Glasscock served 32 months of military duty. He and his family are members of the Methodist Church. He is a member of the Lions Club and Masonic Lodge.

# Marion Tidwell To Receive Award

Mrs. Marion Tidwell of Woodville will be presented a service award by the Vocational Homemaking Association of Texas at the organization's awards banquet in the Grand Ballroom of the Dallas Hilton Hotel, Wednesday, August 1. The award is in recognition of her service to the teaching profession as well as to the VHAT.

Mrs. Tidwell, a teacher in the Kirby High School, will participate in a four-day State In-Service Conference for the professional development of vocational homemaking teachers. The Conference, arranged and planned by the Vocational Education division of the Texas Education Agency, will be highlighted by twenty-three special interest sessions.

The sessions will include a variety of subjects for home economists, National business authorities and educators will present sessions on creative teaching, curriculum development, classroom motivation, sex stereotyping, consumer education, the food service industry, education for parenthood, and adult Special emphasis is given by professionals in the field on the training and motivation of the disadvantaged and handicapped. All sessions will provide an opportunity for homemaking educators to integrate new knowledge and instructional techniques in classroom discussion.

VHAT President Betty Peasey, Robinson, anticipates more than 2000 teachers to attend the conference.

# Lawns Provide Pleasant Environment

COLLEGE STATION: That a 50 feet by 50 feet lawn provides a pleasant environment for a family of four is the message of a study conducted by the Texas Agricultural Experiment Station. The study shows that lawns provide a pleasant environment for a family of four, and that lawns are a better environment than other types of landscaping.

Grass and trees are also effective dust traps. Dirt particles are attracted to leaf surfaces through static electricity or are trapped by dense foliage. Rainfall washes these particles back into the soil, containing the recycling process.

Hanne says grass also acts as a cooling system. Grass releases water through a process called evapotranspiration, which cools the surrounding air. Grass, also, helps to reduce the heat island effect in urban areas.

So, for a pleasant as well as a healthy environment, lawns make a valuable contribution, believes the horticulturist.

# Plant Now For Fall Blooms And Color

July is not too soon to begin planning and planting your fall garden. As spring and summer annuals fade, varieties of fall flowers are available in a wide variety of colors. Sun, well-prepared garden soil is a must for fall plants. Colorful foliage for fall may include the colorful foliage of the fall foliage plants. Good soil preparation is essential for fall plants. Annuals may be planted in late summer and early fall, as they do in the spring and summer. Late summer and fall can be another springtime of color in your landscape if you labor in July.

Some fall flowering annuals may be available at your favorite nursery or garden center. Agereas, Marigold, Petunia and others will perform in the last days of summer and early fall, as they do in the spring and summer. Late summer and fall can be another springtime of color in your landscape if you labor in July.

**'Play It Again'**  
 by **Sam Woodly Allen**  
 Presented by members of **Beyond The Sundown Cast**  
**Sam Houston State University**  
 Studio Theater at SHSU 8:30 p.m.  
**July 29, 1979**  
**Admission FREE**  
 Directed by James Roy  
 77 Graduate of Kirby Sr.

**WHERE YOUR MONEY REALLY ADDS UP Effective July 1 All Passbook Accounts Will Increase To 1 1/2%**

Member of:  
 Federal Savings & Loan Insurance Corporation  
 Federal Home Loan Bank System  
 United States Savings & Loan League  
 Texas Savings & Loan League  
 Supervised by:  
 Texas State Savings & Loan Department  
 Federal Home Loan Bank Board

OPEN MONDAY THRU THURSDAY 9 a.m. to 3:30 p.m.  
 FRIDAY 9 a.m. to 5:30 p.m.  
 Closed on Saturday

**SOUTHEAST TEXAS SAVINGS and Loan Association**

P.O. Box 936 Woodville, Texas 283-3747  
 Branches Now Open At Livingston: 501 W. Church Kountze Hwy. 69 S.

# Variety 79'

An entertaining evening is in store for those attending Woodville Little Theatre's "Variety '79" Saturday night, July 28. The show is scheduled for Kirby High School auditorium at 8:15 p.m.

Co-producers Mabel Utley and Nancy Upchurch have lined up an outstanding cast of Tyler County's talent for the program. Bryce LaToles, Woodville, will be master of ceremonies.

Leading off the program will be two songs by a duet of vocalists Keith McCaffery and Ruth Houston. Mrs. Houston needs no introduction to Tyler County audiences. She teaches music in the Woodville schools and is known for her religious records and especially for her rendition of "Trees" to start the Dogwood Festival Pageant every year. McCaffery, a graduate from Sam Houston State University, where he majored in music. He was choral director at San Jacinto High School in Houston for eight years, where he also was lead baritone for the Gilbert and Sullivan Opera Company.

Linda Allen will perform a dance with Robert Hensarling. Lanny Wood and Kevin Lachausse. She is a former "Miss Tyler County" and was a contestant in the Miss Texas Pageant, where she was the featured dancer the following year. Linda is owner and director of La Linda Dance Studio and has been approved for membership in the Dance Educators of America. She has served as choreographer for the Miss Tyler County Pageant, Polk County Pageant and Big Thicket Pageant and was honored by the Woodville chapter of American Business Women's Association by being selected as their 1978 Woman of the Year.

Bob Woods and Carolyn Homan will sing two numbers, and Sherrie Harvey will join them for another song. They are well-known singers of religious music and have sung many times in this area.

Another feature of the program will be twirling exhibition by Debbie Gore of Warren. She has been twirling for six years and has studied in

Beaumont, Lake Charles, Louisiana, and Houston. Debbie has won 368 trophies. In addition, 211 medals and 6 plaques in twirling competition. Among her achievements have been a fourth place in the International Baton Twirling contest in Maifelle, France as a member of the U.S. Twirling Team in 1978. She also won the gold medal for a first rating at the Texas U.I.L. solo and ensemble contest in Austin this year.

Following intermission the second half of the program will open with a guitar and vocal performance by Nova Rae, operator of Nova's Music in Woodville. She is a Kirby High School graduate. Before returning to Woodville recently she was owner of a guitar school and store in Illinois and taught group guitar lessons in adult education classes for five years. In several Illinois colleges, she is a recording artist, having released three single records and one album, and is an active member of the Country Music Association of Nashville, Tennessee.

A pantomime dance group, The Village People, taught by Linda Allen, will perform a number called "EMCA". Dancers in this group will include Robert Hensarling, Kevin Lachausse, Leroy Wood and Tammy Tolbert.

Kim Thompson, a 1979 Kirby High graduate who was third runner-up in the Miss Tyler County Pageant, will give a demonstration of sign writing. She appeared in a session at Christ for the Nations Institute to study in

Yvonne Byram, a 1978 Kirby High graduate, will sing two numbers, and Deborah Gore will sing two numbers. Yvonne is a senior education in Vocational Home Economics at Sam Houston State University.



The Village People

Tim was 1976-77 Gulf Coast Area Ideal Miss, was chosen as Silbee district 1978-79 Imperial Miss Queen beauty pageant winner and went on to be selected as Imperial, Miss Texas, Queen talent winner. Advance tickets are on sale at Jarrett's Pharmacy and Scott's Beauty Cottage.

**SPECIALS GOOD FRIDAY NITE "ONLY"**

**BIG STAR**

**CAN COKES**  
 LIMIT 4 6 PACKS PLEASE  
**6 FOR 99¢**

**PRESTONE ANTI-FREEZE**  
 LIMIT 2 GALLONS PLEASE  
**\$2.99 GALLON**

**BORDEN'S HI-PRO MILK**  
 1/2 GALLONS **79¢** LIMIT 2 PLEASE

**KRAFT BAR-B-Q SAUCE**  
 LIMIT 3 PLEASE **49¢**

**HAVOLINE MOTOR OIL**  
 LIMIT 5 PLEASE **49¢** QT.

**HYDE PARK SUGAR**  
 LIMIT 1 WITH \$1.00 PURCHASE **48¢**

**GLADIOLA CORN BREAD MIX**  
**FREE TO EVERY CUSTOMER**

**GERBER STRAINED BABY FOOD**  
 LIMIT 5 PLEASE **9¢** JAR

**THESE SPECIALS GOOD FRIDAY JULY 27-FROM 6-7p.m. ONLY**

**THESE SPECIALS GOOD FRIDAY JULY 27-FROM 7-8p.m. ONLY**



Sweet Adelines

**Levi's BACK TO SCHOOL SALE**

**LEVI'S Bell (Flare) \$11.88**  
Boot Jean  
501 Button Jean

**WRANGLERS \$10.88**  
Cowboy Cut  
Boot Flare

**LEVI'S \$8.88**  
Boys Sizes 8-12  
Slim & Regular  
Double Knee

*Best Co.*

### Guard Against Summer

#### Danger: Heat Stroke

Guard against heat exhaustion, heatstroke or sunstroke during hot Texas months, cautions Carol Shearer, a health education specialist.

Ms. Shearer is with the Texas Agricultural Extension Service, The Texas A&M University System.

The combined effects of sun, exercise, heat and excessive perspiration which result in loss of fluids and salts can produce these serious conditions.

**HEAT EXHAUSTION**  
The body's normal reaction to high temperatures is to cool blood near the surface of the skin so that sweat is formed and then evaporated into the air releasing heat.

This process works very well in most instances, the specialist says.

However, when a person is exposed to high temperatures—especially combined with high humidity—for a long period of time, the vessels deep in the body may lack sufficient blood resulting in heat exhaustion.

Some symptoms of heat exhaustion include muscle cramps and weakness, and although the victim's temperature may be near normal, the pulse is often very weak. The skin is usually cool but very pale and moist.

Treatment consists of getting the person out of the sun immediately. Slowly sipping cool—not cold—water will help cool down the body.

A breakdown of the cooling system of the body which causes the body temperature to rise uncontrollably causes heatstroke, the specialist explains.

Because the sweating mechanism is not working, there is very little perspiration.

As the case of heat exhaustion, the victim's pulse is weak and a fast, strong pulse is not present. The victim may be nauseated and have a headache. There is also a possibility of the person collapsing.

As in the case of heat exhaustion, the important thing is to get the victim out of the sun to lower the temperature.

Sprinkle the person with water, especially around the head. Avoid giving the victim stimulants such as tea or coffee because of the probability of complications such as increased blood pressure.

If the person is unresponsive, give no fluids at all. Ms. Shearer cautions.

**PRESERVE SUNSTROKE!**

**HEATSTROKE!**  
To prevent sunstroke or heatstroke, avoid being in the sun and heat for long periods of time; drink a sufficient amount of fluids; wear, loose-fitting, clothing such as cotton T-shirts which do not restrict perspiration and keep the body cool.

**We Now Have PO-BOYS & Roast Beef Sandwiches**

Cotton Candy • Plants  
Popcorn • Cold Drinks  
Homemade Candy  
Blue Bell Ice Cream  
Homemade Sandwiches

**The Yum Yum Factory**  
207 W. Bluff 283-7410

**TREES, TREES, TREES**

*That's Our Only Business*

Let us remove those dead or unwanted trees.

We also top, trim and feed

FOR FREE ESTIMATES  
CALL 837-2684 After 5:00 p.m.

**Tyler County Tree Service**  
Where We Go Out On A Limb For You.

**MANN FURNITURE**

25" CONSOLE COLOR XL-100 \$568

RCA BIG COLOR W/REMOTE \$498

Direct Furniture Showcase  
302 N. Magnolia 283-5211

### Employers: Watch Withholding Tax

AUSTIN, TEXAS—Employees' wages can expect close attention from the Internal Revenue Service, the income and Social Security taxes withheld from their cause, employers act as trustees for part of their employees' wages. Withholding taxes along to the employees who earned the money rather than to the employer, who must pay over the withholding to the IRS. In effect, employers who are delinquent with Social Security and income taxes are misusing other people's money.

Specific instructions on withholding from wages, filing employment tax returns and paying over withheld taxes are in IRS Publication 559, "Withholding Taxes and Reporting Requirements," and in Circular E, Employer's Tax Guide," both of which are available free from local IRS offices.

Employers can also attend IRS-sponsored Small Business Tax Workshops to learn about their Federal employment tax responsibilities. Information about these free Workshops, as well as about IRS publications, can be gotten by calling the toll-free number 1-800-972-4830.

Repeatedly failing to promptly file or pay taxes due on Form 941, "Employer's Quarterly Federal Tax Return," may subject an employer's business practices to scrutiny leading to inclusion in the IRS Trust Fund Compliance Program. Service reports that most employers fulfill their withholding tax responsibilities usually receives an IRS letter warning that future trust fund violations during the "Warning" period will result in a placement in the program. After receiving other successful, obtain this warning the employer's withholding tax reliability is observed by IRS Collection personnel. Should the monitored employer continue to incur one or more of these circumstances, a notice of noncompliance or payment of tax requirements, local IRS share-no more, no less.

**Vinyl Siding is FINAL**

End your painting problems now with 40-year warranty vinyl siding. We cover all exposed wood on brick homes, too.

Free estimates: Ed Sanderson 283-5430

**Friedrich room air conditioners put the squeeze on electrical costs**

Use less energy and save money...but stay comfortably cool. Friedrich Room Air Conditioners with exclusive Money Saver Button lets you enjoy wonderful comfort without wasting electricity. That's what it's put together better!

**Friedrich ROOM AIR CONDITIONERS**

### Downright Good Pickin's

**DAVOL ICE BAG \$3.69**  
\$5 VALUE FOR \$3.69

**FOSFREE VITAMINS 100's \$5.29**  
\$9.22 VALUE FOR \$5.29

**"PEANUTS" PUZZLE \$1.49**  
\$2.49 VALUE FOR \$1.49

**RIOPAN ANTACID \$1.39**  
\$2.15 VALUE FOR \$1.39

**EARTH BORN SHAMPOO \$1.96 VALUE FOR 99c**

**RAVE NON AEROSOL SOFT HAIR SPRAY \$1.79 VALUE FOR 99c**

**BATTERY OPERATED LIGHTED PIN BALL MACHINE GAME \$20 VALUE FOR \$9.99**

**PIC MOSQUITO REPELLANT COILS SET OF 4 FOR 99c**

**NORELCO DOUBLE BURGER COOKER \$19.95 VALUE FOR \$14.95**

**8-TRACK TAPES POPULAR ARTISTS ORIGINAL LABELS \$7.98 VALUE FOR \$4.99**

**AVON DRUGS**

106 S. Charlton 283-2163 Woodville, Texas

"OUR NAME IS OUR MOTTO"

### Business & Service Directory

**Perfecto Cleaners**  
Cleaning and Laundry Service  
1111 W. Woodville

Place Your Ad Here Call 283-2560

**TRACTOR WORK • TREES CUT • LOTS CLEARED**  
Jim Lawson 283-2768

**Phillips Heating & A/C**  
Heating & A/C Sheet Metal Electrical Carrier  
283-5247 Service All Brands

**Ceramics & Gifts**  
greenware • paints • supplies  
Flora McGulley 283-7903

**TURNER'S RADIATOR & CUSTOM EXHAUST**  
GENERAL AUTO REPAIR  
24 HOUR WRECKER SERVICE  
102 Pine

**CAR INSURANCE CANCELLED?**  
Call  
A.I. TEXAS INSURANCE AGENCY  
1400 W. Woodville

**Ramsey's Mini Warehouse**  
NOW LEASING  
283-3481  
SABINE MONUMENTS  
Woodville, Texas

**MONUMENTS**  
CUSTOM DESIGNS & ENGRAVING  
(Death dates engraved on site)  
SABINE MONUMENTS  
3 Mi. S. Woodville Hwy. 69 283-2468

**J. R. Henson**  
**ALUMINUM PRODUCTS**  
Exclusive Hogmet Products  
• Store Fronts • Awnings  
• Marquis • Screen Rooms  
• Carports • Skirting  
• Patios • Walkways

Commercial & Residential  
Free Estimates 384-5598

**Henry's Cabinet Shop**  
25 Years Experience Cabinets and Built-ins  
Cabinet repair, Paneling, ceiling, remodeling  
655 W. Woodville 283-5221

**CLEAN-UP! PAINT-UP! FIX-UP!**  
Interior Painting  
BOYKIN LUMBER & SUPPLY  
283-3731

**Allstate**  
You're in good hands  
25% DISCOUNT  
on your Allstate Homeowner's  
Coverage and when you insure  
people at Clemmons Insurance  
to see if you qualify.

Morris Clemmons, Jr., Agent  
CLEMMONS INSURANCE AGENCY  
Insurance • Real Estate • Appraisals  
102 S. Charlton 283-2514

**MAJESTIC MARBLE**  
Specializing in Custom Built Vanity  
Tops, Tub Enclosures and Showers.  
Call C. M. Kelly 384-4438  
Hwy. 190 West Jasper, Texas

**Waich & Jewelry Repairs**  
Work Done on Premises  
283-3245

**WOODVILLE**  
TV, Stereo, Audio  
Sonic  
283-3601

**Dam B Septic Tank Cleaning**  
New Tanks Installed and Field Line Work  
429-3537 or 429-3095  
Check our Yellow Page ad

**heads west**  
Professional precision haircutting  
for men and women  
1400 W. Woodville

**WOODVILLE**  
BOYKIN LUMBER & SUPPLY  
283-3731

**A.P. McDaniel**  
Specialist in Wood Business  
Vio Specialist in On the Job  
Accident Insurance  
Fidelity  
Excess Insurance Through  
LOYDS OF LONDON  
24 hour a day coverage for the owners  
We also offer LIFE, HEALTH AND CANCER INSURANCE  
P.O. Box 306  
WOODVILLE, TEXAS 75779 PHONE (713) 283-3143

**Dam B Septic Tank Cleaning**  
New Tanks Installed and Field Line Work  
429-3537 or 429-3095  
Check our Yellow Page ad

**H.T.O. & W. ELECTRICAL & REPAIR SERVICES**  
House Wiring & Repair  
Air Condition Repair & Installation  
Large & Small Appliances Fixed  
Water Pump & Hot Water Heaters  
Circuit Breaker & Tune Up  
Welding Service  
FREE Estimates  
429-5087

**HEALTH TIPS**

Most of us don't drink enough water. Everyone needs at least two quarts of water a day, more on warm days, to function normally, says Dr. Glas Glen King, Associate Director, Columbia University Institute of Nutritional Sciences. Less water than that may cause dehydration, resulting in fatigue, headaches, dizziness, and in extreme cases, collapse.

**Bob's Prescription Shop**  
1010 W. Bluff Woodville 283-3073

**A-Z DISCOUNT AUTO PARTS**  
Special AM/FM Stereo  
**RADIO/8 TRACK SALE**  
TAPE PLAYER Reg. \$99.95 \$69.95  
1015 S. Magnolia 283-2501

**SERVICE NEEDS?**  
We service any make or model  
Refrigerator, Freezer, A/C, Stove,  
Washer, Dryer and Dishwasher!

**ROSE TRADING POST**  
Hwy. 190 Dam B 283-5635

**Champion Fence & Awning**  
Patio Covers • All Aluminum • Screen Rooms • Concrete Slabs • Carports • Gutters • Awnings • Mosquito Netting • Fence Oil All Types  
FREE ESTIMATES  
430 South Magnolia 283-5914  
283-7353 After 5:00 283-2604

For the best in furniture and appliances SEE...  
**McClure Furniture**  
Zenith, Maytag, La-Z-Boy Chairs,  
Tell City, Simmons, Sealy, Amara  
Basset, Armstrong carpeting.  
305 N. Magnolia 283-2519

**20 years experience**  
Warranty  
**DIAL FRED'S TV FOR SERVICE**  
283-7409 8:30 til 5:00  
Call Us Today  
Free estimates on work brought in.

**Permanent Gasoline Rationing Near?**  
A University of Texas expert on energy resources has a dire prediction for America's future. Among his suggestions for coping with the crisis are developing alternative energy sources, such as solar energy, which is inexhaustible, conserving existing energy resources and controlling world population.

you put in your car last week. The UT geologist says.

Among his suggestions for coping with the crisis are developing alternative energy sources, such as solar energy, which is inexhaustible, conserving existing energy resources and controlling world population.

**Friedrich ROOM AIR CONDITIONERS**

Use less energy and save money...but stay comfortably cool. Friedrich Room Air Conditioners with exclusive Money Saver Button lets you enjoy wonderful comfort without wasting electricity. That's what it's put together better!

**Friedrich ROOM AIR CONDITIONERS**

**The Furniture Center**  
107 E. Bluff 283-2805

**MUSTANG has the one-yard CAT 931 track loader that's loaded with big machine features!**

Now you can own a smaller CAT track loader with traditional CAT quality - backed by Mustang's service. The 931 gives you these features:

- 62 Flywheel Horsepower
- Full Power Shifting
- Pedal Steering and Braking
- 10,700 Lb. Breakout Force
- 15,300 Lb. Operating Weight

Ask your Mustang Salesman about a financing plan tailored to your needs! Or about renting or leasing.

**Mustang TRACTOR & EQUIPMENT CO.**  
Lufkin, Texas 75901  
Highway 69 (S.E.) (713) 632-5565  
Corral, Charlie Bluff

**Vinyl Siding is FINAL**

Watch it come alive again. 40 Year Warranty Vinyl Siding can make an incredible difference in less time and for less money than you would believe possible. Call us. We'll give you the details at no cost, no obligation.

**Sanderson Home Improvement**  
283-5430

**Mustang TRACTOR & EQUIPMENT CO.**  
Lufkin, Texas 75901  
Highway 69 (S.E.) (713) 632-5565  
Corral, Charlie Bluff

**Consider Freezer Purchase Carefully**

COLLEGE STATION — Consumers should carefully consider costs and benefits before determining which freezer option best suits their needs, advises Nancy Granovsky, a family resource management specialist with the Texas Agriculture Extension Service, The Texas A&M University System.

Many consumers probably buy larger freezers than they need, she says.

One rule of thumb suggests that about two and one-half cubic feet of freezer space is adequate per family member. That would mean that a family of four would need only about 10 cubic feet.

The typical 17 cubic-foot refrigerator-freezer has approximately four cubic feet of freezer space, leaving the remaining household freezer space would be for about seven cubic feet.

Therefore, some of the compact freezers on the market could serve the needs of many four-member households at a lower initial cost than the larger freezers, the specialist suggests.

Larger freezers use more than 100 kilowatt-hours per year, more than a radio, TV, dishwasher and washing machine combined, in a large freezer, and is not filled to capacity, extra money is wasted to keep the area cold.

Chest freezers are less energy than upright models because less air escapes when the chest lid is lifted than when the upright door is opened.

When the freezer is located will influence energy consumption also. A 15-cubic-foot chest-freezer will consume about 24 percent more energy when the room temperature is 90 degrees F. than when it is 70 degrees F.

When the room temperature is over 90 degrees F., the energy use of the freezer will double, Mrs. Granovsky explains.

Because of space limitations, many larger freezers are located in garages or non-air-conditioned utility areas, whereas compact freezers may fit more conveniently into the air-conditioned areas of the home.

One alternative is home freezers, which are commercially available freezer space which can be rented on a monthly or annual basis.

The cost would be lower than the investment and operating costs of a home freezer, but the inconvenience and lack of flexibility may not suit every family's needs.

Careful planning is necessary to organize freezer contents, to maintain an up-to-date inventory, and to minimize the extra locker locations.

Bullock Says Gross Sales 'Up'

AUSTIN, TEXAS — State Comptroller Bob Bullock Thursday said gross sales in Texas for the first quarter of 1979 totaled \$45.3 billion, a 5.1 billion increase over the same three-month period last year.

Bullock said a sales tax analysis for Texas during 1978 showed that gross sales in the state exceeded \$156 billion.

Bullock also released a computer analysis showing reported sales for each of the state's 254 counties and sales tax analysis broken down by the state's Standard Metropolitan Statistical Areas.

In the first quarter of 1979, Harris County recorded sales totaling \$12.4 billion through 4,177 reporting outlets.

Sales reported in the state's other major urban areas include:

- Dallas County, \$7.5 billion
- Bexar County, \$2.1 billion
- Tarrant County, \$3.2 billion

Reported gross sales in all major urban areas were up over reported sales in the first quarter of 1978.

**Bullock Says Gross Sales 'Up'**

Grant Awarded

AUSTIN, TEXAS (Sp.) — A University of Texas pharmacy teacher has received a \$23,000 Federal grant to examine the behavioral effects of alcohol and barbiturates and determine what each does to the central nervous system.

Dr. Steven W. Leake, will correlate two simultaneous occurrences: the behavioral characteristics involved with sedation and physical dependence brought on by alcohol and barbiturates, and the biochemical effects those substances induce.

"If we can find out what is going on in the brain and what causes a craving for drug, we may be able to remove the desire for the drug," he says.

**Hedge Against Hedge**

AUSTIN, TEXAS (Sp.) — Some of the protective actions people take as a hedge against inflation can cause even more inflation, says the director of The University of Texas Bureau of Business Research.

Dr. Charles Holt says such actions usually are prompted when the price of an essential commodity in-creases and is expected to continue to increase.

They buy diamonds, jewelry, gold, silver, and land and real estate to the extent that people distort their holding of economic assets," he says.

"They're buying things they don't really want. They're really distorting the economic activity."

**'Heat' Program May Help Texans**

Austin, Texas (Sp.) — A University of Texas program known as HEAT may help Texans keep their cool about energy.

The Home Energy Analysis Training program, developed by the Center for Energy Studies, teaches a variety of persons through and the state the skills necessary to advise homeowners of the "how" and "why" of residential energy conservation. Such persons may be utility personnel, building contractors, architects, engineers, and real estate appraisers, among others.

The idea is that conservation can be encouraged by providing homeowners with enough data to judge the usefulness (and saving in dollars) of energy conservation options.

Dr. Williams advises women to fight goallessness by engaging in activities that create a balance between their physical, emotional and intellectual needs. But she cautions: Don't strive to be perfect, for perfection can lead to depression.

**'Goallessness' A Trait**

**Miller's BIG STAR**

WOODVILLE, TEXAS

**ADOLPHUS ADOLPHUS RICE 3 LB. 89¢**

**GLADIOLA FLOUR 5 LB. 79¢**

**FRISKIES DOG FOOD 25 LB. \$4.19**

**SUPER SUDS DETERGENT GNT. 89¢**

**Miller's BIG STAR**

PRICES GOOD JULY 25-31, 1979

**DR. GARY E. TATUM**

Optometrist

Announces New Office Hours

Wednesday 9 a.m. - 5 p.m.

Friday 9 a.m. - 12 noon

Room 107-Woodville Inn 283-3011

(across from bank parking lot)

Call our answering service at the above number during the week for appointment.

**Public Notices**

**STATE OF TEXAS**

**NOTICE TO BIDDERS**

Sealed bids for the purchase of a certain amount of... will be received at the City Hall located at 113 Chautauque Street, Woodville, Texas, until 5:00 p.m. on July 27, 1979.

The bidder shall be required to furnish all necessary material, machines, equipment, supervision, and labor for the construction of the project.

Approximately 5,500 L.F. of WATER LINE AND SEWER LINES. APPROXIMATELY 3,000 L.F. of WATER LINE AND SEWER LINES. A certified check or cashier's check for a properly executed bid bond in the amount of 5% of the total amount bid must be submitted with the bid.

The Owner reserves the right to reject any or all bids and to waive any formalities.

Sealed bids will be received at the City Hall, 113 Chautauque Street, Woodville, Texas, until 5:00 p.m. on July 27, 1979.

The City Hall is located at 113 Chautauque Street, Woodville, Texas 77380.

By: **Deputy Mayor**

**NOTICE TO BIDDERS**

Sealed bids directed to the Mayor and City Council of Woodville, Texas will be received at the City Hall located at 113 Chautauque Street, Woodville, Texas until 5:00 p.m. on July 27, 1979.

The bidder shall be required to furnish all necessary material, machines, equipment, supervision, and labor for the construction of the project.

Approximately 5,500 L.F. of WATER LINE AND SEWER LINES. APPROXIMATELY 3,000 L.F. of WATER LINE AND SEWER LINES. A certified check or cashier's check for a properly executed bid bond in the amount of 5% of the total amount bid must be submitted with the bid.

The Owner reserves the right to reject any or all bids and to waive any formalities.

Sealed bids will be received at the City Hall, 113 Chautauque Street, Woodville, Texas, until 5:00 p.m. on July 27, 1979.

The City Hall is located at 113 Chautauque Street, Woodville, Texas 77380.

By: **Deputy Mayor**

**OUR SPECIAL BACON**

**12 oz. 99¢**

**HYDE PARK PIZZA**

**12 oz. 79¢**

**STORE HOURS**

MONDAY - SATURDAY

7 a.m. - 6 p.m.

**BUMBLE BEE TUNA 6 oz. 59¢**

**B' GRADE MEDIUM EGGS**

**14 oz. 53¢**

**BUSH GOLDEN HOMINY**

**14 oz. 48¢**

**FRYERS**

**12 oz. 43¢**

**HEAVY BEEF BONELESS CHUCK STEAK LB. \$1.79**

**HEAVY BEEF BONELESS STEW MEAT LB. \$1.79**

**HEAVY BEEF CUTLETS LB. \$1.99**

**ECONOMY BACON LB. 65¢**

**BACON BENDS&PIECES 3 LB. \$1.39**

**MAPLE RIVER ROLL SAUSAGE 12 oz. 69¢**

**SLICED PICNICS LB. 79¢**

**CUT UP FRYERS LB. 53¢**

**FRYER BREAST LB. 99¢**

**FRYER LEGS LB. 99¢**

**FRYER THIGHS LB. 89¢**

**FRYER QUARTERS LB. 53¢**

**THIS WEEKS JACKPOT \$950.00**

**AUDREY ANDERSON WARREN DID NOT HAVE CARD PUNCHED**

**BORDENS HIPRO MILK 1/2 GAL. 99¢**

**KRAFT BBQ SAUCE 18 oz. 59¢**

**HYDE PARK WHOLE OR HAMBURGER DILLS 32 oz. 89¢**

**BORDENS CHOCOLATE MILK QT. 59¢**

**GREEN GIANT WK/CS CORN 16 oz. 3/\$1.00**

**CRISCO OIL 48 oz. \$2.19**

**CREMORA COFFEE CREAMER 22 oz. \$1.69**

**ZEE BATH SOAP 5 oz. 39¢**

**NABISCO VANILLA WAFFERS 12 oz. 79¢**

**MRS. GOODCOOKIE 16 oz. 99¢**

**HYDE PARK BISCUITS 8 oz. 6/99¢**

**KRAFT CREAMY ITALIAN DRESSING 8 oz. 59¢**

**AIM TOOTHPASTE 6.4 oz. 99¢**

**WAGNER ORANGE DRINK 32 oz. 49¢**

**HYDE PARK CUT GREEN BEANS 3/\$1.00**

**HYDE PARK BLACK PEPPER 4 oz. 79¢**

**FRISKIES BUFFET CAT FOOD 6 oz. 4/99¢**

**NABISCO OREOS 19 oz. \$1.29**

**HYDE PARK PAPER TOWELS ROLL 2/99¢**

**HYDE PARK TISSUE 4 ROLL 79¢**

**PINE O PINE 15 oz. 89¢**

**CASCADE 50 oz. \$1.69**

**SHOWBOAT PORK & BEANS**

**14 oz. 4/\$1.00**

**ECONOMY SMOKED SAUSAGE**

**12 oz. 79¢**

**SMOKED PICNICS**

**12 oz. 69¢**

**SMOKED PICNICS**

**12 oz. 69¢**

**EL CHICO MEXICAN DINNERS**

**12 oz. 79¢**

**BANANAS LB. 3/89¢**

**CELERY LB. 49¢**

**CALIFORNIA RED ONIONS LB. 39¢**

**GREEN CABBAGE LB. 19¢**

**THIRTY SAVER SPECIAL FOLGERS**

**1 LB. \$2.29**

WITH THIRTY SAVER BOOKS

**THIRTY SAVER SPECIAL BLUEBONNET MARGARINE**

**1 LB. 9¢**

WITH THIRTY SAVER BOOKS

**THIRTY SAVER SPECIAL HYDE PARK SUGAR**

**5 LB. 69¢**

WITH THIRTY SAVER BOOKS

**PLUMS**

**1 LB. 49¢**

**Public Notice**

Gulf States Utilities Company, in accordance with the rules of the Public Utility Commission of Texas, hereby gives notice of its intent to implement new rates schedules for electric service in areas served by the Company within the State of Texas, effective August 6, 1979, or as soon thereafter as permitted by law.

The new schedules will result in a 19.92 percent increase in the gross revenue of the company.

A complete copy of the new rate schedules is on file with the Public Utility Commission at Austin, Texas, and with each affected municipality. Copies are also available for inspection at each of the company's public business offices.







**COMPARE PRICES AND SEE FOR YOURSELF HOW YOU SAVE MONEY WITH PLAIN LABEL PRODUCTS**

MEDIUM GRAIN RICE	2 LB. SIZE	48¢	TRASH BAGS	PKG. 20	\$1.59	BLENDED SHORTENING	42 OZ. CAN	\$1.48
BROWN BAG DOG FOOD	25 LB. BAG	\$3.99	PAPER TOWELS	BIG ROLLS	48¢	SANDWICH BAGS	150 CT. PKG.	68¢
WHOLE TOMATOES	NO. 2 1/2 CANS	54¢	ELBOW MACARONI	2 LB.	78¢	TEA BAGS	PKG. 100	\$1.29
GLER PAPER PLATES	PKG. 100-8 INCH	\$1.19	CREAM STYLE CORN	303 CANS	32¢	TOMATO CATSUP	32 OZ. BTL.	78¢
FACIAL TISSUE	BOX 200	43¢	WHITE LIQUID DETERGENT	32 OZ. BTL.	66¢	SALAD DRESSING	32 OZ. JAR	68¢

**PLAIN LABEL - ADD UP THE SAVINGS!**

**HY-TOP SUGAR**  
5 LB. BAG. LIMIT 1 W/7.50 PUR.  
**68¢**

**JOLLY POP**  
FLAVOR DRINKS  
ASSTD. FLAVORS  
12 OZ. CANS  
**97¢**

**BOLD-3**  
POWDERED DETERGENT  
84 OZ. SIZE  
25¢ OFF LABEL  
**\$2.49**

**TOILET TISSUE**  
SOFT'N PRETTY  
4 ROLL PKG.  
**79¢**

**MACARONI & CHEESE**  
HY-TOP  
7 1/4 OZ.  
FOR  
**\$1.41**

**BETTY GROCKER LAYER CAKE MIX**  
ASSTD. FLAVORS PKG.  
**75¢**

**BETTY GROCKER READY TO SPREAD FROSTING**  
CAN  
**\$1.09**

**PILLSBURY BISCUITS**  
BUTTERMILK OR COUNTRY STYLE  
5 CANS 6  
**\$1.00**

**HY-TOP LOW-FAT MILK**  
1/2 GALLON  
**89¢**

**ROEGELEIN SLICED BACON**  
12 OZ. PKG.  
**89¢**

GOOCH BUTT PORTION SMOKED HAM LB. 98¢  
GOOCH CENTER-CUT HAM ROAST LB. \$1.79  
GOOCH BLUE RIBBON HOT LINKS LB. \$1.39  
GOOCH GOLDEN-AWARD BNL'S HAMS LB. \$2.98

**SMOKED HAM**  
GOOCH SHANK PORTION  
LB. **89¢**

ROEGELEIN COY DRY SALT PORK LB. 99¢  
OSCAR MAYER SMOKIE BEEF LINKS 12 OZ. \$1.79  
OSCAR MAYER PURE BEEF FRANKS LB. \$1.79  
OSCAR MAYER ALL MEAT WEINERS LB. \$1.59  
CLAUSSEN ASSTD. PICKLES 4 VARIETIES JAR \$1.29

PRICES PIMENTO SPREAD 14 OZ. CTN. \$1.69  
CORN DOGS 12 OZ. CTN. \$2.09  
ROWDY KITCHEN BEEF BEAN BURRITOS 1.38 PKG. \$1.29

BROOKSHIRE VAC PACK SLAB SLICED BACON LB. \$1.19

WILSON'S WESTERN STYLE SMOKED SAUSAGE LB. \$2.19  
T.E. WILSON BNL'S HAMS LB. \$2.79  
WILSON SMOKED PORK CHOPS LB. \$2.19  
KRAFT VELVET (REG. JALAPENO CHEESE LB. \$1.69  
KRAFT AMERICAN SINGLES CHEESE LB. \$1.79

**ROEGELEIN ALL MEAT WEINERS**  
12 OZ. PKG.  
**89¢**

GOOCH BLUE RIBBON SUGAR CURED BACON LB. \$1.39  
HORNEL SMOKED WRANGLERS LB. \$1.99  
HORNEL LITTLE SIZZLERS 12 OZ. \$1.19  
BROOKSHIRE SLICED BACON LB. \$1.39

**HOLLY FARMS MIXED FRYER PARTS**  
LB.  
**49¢**

**HOLLY FARMS USDA GRADE A FRYER BREAST**  
LB. **\$1.29**

**HOLLY FARMS USDA GRADE A FRYER DRUMSTICKS OR THIGHS**  
LB. **\$1.19**

**PURINA DOG CHOW**  
50 LB. BAG  
**\$12.39**

**HY-TOP BLUE LAKE CUT GREEN BEANS**  
3 303 CANS  
**\$1.00**

**DEODORANT SOAP ZEST**  
2 BATH SIZE  
**89¢**

**DISHWASHING LIQUID DAWN**  
32 OZ. BTL.  
20¢ OFF LABEL  
**\$1.29**

**KRAFT MAXI-CUP SOFT PARKAY GOLD MEDAL FLOUR**  
5 LB. BAG **99¢**

**WESSON OIL**  
48 OZ. BTL. **\$2.39**

**WAGNER THIRST QUENCHER MIX**  
32 OZ. BTL. **57¢**

**GLAB LARGE GARBAGE BAGS**  
PKG. 15 **\$1.39**

**HY-TOP FRESH CORN CHIPS**  
10 OZ. BAG **65¢**

**FRUIT DRINK**  
GALLON **89¢**

**BORDEN LITE LINE YOGURT**  
ASSTD. FLAVORS  
3 8 OZ. \$1.00

**HY-TOP COTTAGE CHEESE**  
12 OZ. **59¢**

**BETTY GROCKER HAMBURGER HELPER**  
ALL VARIETIES PKG. **79¢**

**POST CEREAL POST TOASTIES**  
18 OZ. BOX **89¢**

**POST CEREAL RAISIN BRAN**  
20 OZ. BOX **\$1.39**

**NABISCO SESAME WHEAT COOKIES**  
8 1/2 OZ. **83¢**

**NABISCO OREO COOKIES**  
19 OZ. PKG. **\$1.29**

**CREME RINSE & CONDITIONER**  
8 OZ. BTL. **\$1.39**

**AGREE REGULAR OILY PROTEIN SHAMPOO**  
8 OZ. BTL. **\$1.59**

**HY-TOP FLO-THRU TEA BAGS**  
PKG. 24 **\$1.59**

**HY-TOP ANIMAL CRACKERS**  
13 OZ. **69¢**

**HY-TOP VANILLA WAFERS**  
8 OZ. **49¢**

**HY-TOP WHITE OR YELLOW CORN MEAL**  
5 LB. BAG **89¢**

**Budget Priced Freezer Fillers.**

**JENO'S SAUSAGE-PEPPERONI-HAMBURGER PIZZAS**  
13 OZ. SIZE **99¢**

**BANQUET FRIED CHICKEN**  
SAVE 50° 2 LB. BOX. **\$2.39**

**KITCHEN TREAT MEAT PIES**  
CHICKEN BEEF TURKEY  
4 8 OZ. SIZE **\$1.00**

**ORANGE JUICE**  
HY-TOP FROZEN GLAZED DONUTS  
12 OZ. CAN **89¢**  
14 OZ. PKG. **89¢**

**Save on Fine Quality Produce.**

**GOLDEN RIPE BANANAS**  
3 LBS. **\$1.00**

**CALIFORNIA LETTUCE**  
HEAD **49¢**

**CALIFORNIA AVOCADOS**  
3 FOR **\$1.00**

**CALIFORNIA PLUMS**  
LB. **49¢**

**HOME GROWN PEACHES**  
LB. **49¢**

**NEW CROP CABBAGE**  
LARGE CALIF. **19¢**

**BELL PEPPER**  
5 FOR **\$1.00**

**50 EXTRA STAMPS**  
WITH THIS COUPON AND \$5.00 Or More Purchase (Excluding Cigarettes)  
GOOD: JULY 25-31, 1979

**PRICES GOOD JULY 25-31, 1979**

**WE GLADLY ACCEPT USDA FOOD STAMPS**

**Brookshire Bros.**  
THE BEST FOR LESS.  
WOODVILLE, TEXAS

**100 EXTRA STAMPS**  
WITH THIS COUPON AND PURCHASE OF PKG. 20 HY-TOP TOP TRASH BAGS  
GOOD: JULY 25-31, 1979