

THE TYLER COUNTY BOOSTER

Serving Tyler County
Since 1930

Thursday, Jan. 10, 1980
Woodville, Texas, 75979
Vol. 53 No. 2 20

Ain't It Great!

By MIKE BURROW

There seems to be a lot going on this week, but first I would like to remind everyone in Tyler County to please participate in this year's Blood Drive which is scheduled for Thursday and Friday at the Fellowship Hall of the First Baptist Church in Woodville.

Donating blood during the drive is almost like buying insurance. If one member of a family donates during the drive, his immediate family is covered for all their blood needs during the coming year. The drive is conducted by technicians from the Blood Center of Southeast Texas at Beaumont.

Persons age 18 to 65 are encouraged to join in and give the "gift of life" this year.

An account has been established at Citizens State Bank by friends of the Jessie Graham family to help defray hospital expenses of Randy Graham. Young Graham was injured recently when a gun he was cleaning accidentally discharged.

Anyone wishing to participate may do so by depositing their contribution to the Randy Graham Fund at the bank.

Help is needed in the making of the many dogwood flowers which will be used in the upcoming Dogwood Festival. According to Mrs. Margaret Pope, anyone who has a little time and wishes to help will be welcome. There are no age barriers and senior citizens, young adults, teenagers, everyone is welcome. Instructions and materials will be furnished. Interested persons can contact Mrs. Pope at 283-5907 or Ceta Birdwell at 283-2658.

I wrote a column recently about interesting sayings on old tombstones. Well, Gina Fowler, an eighth grader, has a saying that is quite interesting.

(Continued on page 2A)



HERMAN NOLEN

Nolen Seeks Sheriff Position

Herman Nolen has announced his candidacy for the position of sheriff of Tyler County.

Nolen is a lifelong resident of Tyler County. He and his wife reside at Lake Hyatt. Nolen, 52, has one daughter and two grandchildren.

Nolen served as chief deputy sheriff of Tyler County for two and one-half years. He served as constable of Tyler County for three years. He is now deputy constable of Precinct 4 and is also employed as a security patrolman in Wildwood.

"When elected sheriff of our county I will serve all the people all the time," Nolen said. "Your calls will be answered 24 hours a day. Calls will be answered by experienced and courteous personnel. I sincerely ask your vote and support in the May primary election."

A 39-year-old white male believed to be the robber of the Chester State Bank on February 20, 1979, is in the Tyler County Sheriff's Department custody in Spokane, Washington, according to Chief Deputy Butch Kraus, the suspect is believed to be involved in at least four bank robberies in that area of the country, along with the one at Chester and the three immediately following the Chester holdup along the Louisiana border at Starks, Elizabeth and Kingsville, La. All the banks reported almost identical holdups as the one in Chester last year.



ROBBERY BREAKTHROUGH—Chief Deputy Butch Kraus, left, and Sheriff Lewis Craven examine evidence in their files of the Chester State Bank robbery on February 20, 1979. The Tyler County Sheriff's Department revealed this week that a suspect in the Chester robbery is in custody in Spokane, Washington. The suspect is currently on trial in that state for another bank robbery there. Kraus and officers from Louisiana are scheduled to extradite the suspect to Louisiana following that trial.

In Chester Bank Robbery Robbery Suspect In Custody

The suspect lists his occupation as a logger and his place of birth as Juneau, Alaska. He is also reportedly on parole for a previous bank robbery. Kraus said the suspect has been linked to the Louisiana bank robberies through fingerprints. Sheriff Lewis Craven, in cooperation with the Louisiana law enforcement agencies, plans to extradite the suspect to Louisiana. Although the charges are filed in Louisiana, Sheriff Craven plans a lineup there so the employees of the Chester bank can possibly identify the robber.

(Continued on page 2A)

Gospel Singing Scheduled

The Neches Valley Singing Convention will meet in the old High School Auditorium in Woodville, January 18, 19 and 20th.

A concert of all special groups will begin Friday evening, January 18, at 7 p.m. The Saturday afternoon session begins at 1:30 p.m., January 19. The Saturday evening session begins at 6:30 p.m. The Sunday morning session begins at 9:30 a.m. with a business session at 9 a.m.

This is one of the largest conventions in the United States and has been meeting since 1936, when organized by the late Burl Carter.

Groups from Dallas, Houston, Carthage and Ruston, La., along with groups from the immediate area will attend the concert and the convention. Concessions will be handled by the Woodville Band Boosters Club. Local arrangements are being made by Robbie Conner, a Texas vice-president. Officers are Jess Harper, President; Videt Polk and Gary Davis, Louisiana vice-presidents; Robbie Conner and G.E. Perkins, Texas vice-presidents; Jackie Harper and Eva Perkins, secretaries.



ED NORWOOD

Ed Norwood Files For Representative

E.R. Ed Norwood of Liberty has announced his candidacy for State Representative, District 16, comprised of Liberty, Polk, San Jacinto, Trinity and Tyler Counties.

Norwood is married to Michele B. Norwood and has one child, Tonja Norwood, age 13.

Norwood attended grammar and junior high school in the Hull-Daisetta Independent School District and was graduated from Liberty High School. He was graduated from Louisiana State University in 1969 with a Bachelor of Science degree in petroleum engineering and then took his law degree from the University of Houston, graduating in 1972, cum laude.

At law school he was a member of (Continued on page 2A)



J.L. 'SONNY' FOWLER

Fowler Runs For Constable

J.L. "Sonny" Fowler, 53, of Fred has announced that he is a candidate for the position of Constable, Precinct 4, in the Democratic primary election.

Fowler is presently the manager of Brinks Armored Car Co. at Beaumont. He is also a licensed investigator and has been with the firm for 27 years.

Born and raised in Tyler County, he served in the U.S. Army from 1945 to 1952. He was a military policeman while in the service. He is married and the father of five children.

"I am running to help the community I am living in," he said. "I am planning on retiring in the near future and devoting all my time to the constable job."

Council Hears Of Ambulance Service Here

The regular monthly meeting of the Woodville City Council on Monday heard a 55-minute presentation from ambulance entrepreneur Nels Greenup in a request to the City fathers to join with county and hospital officials in creating a general public awareness of the needs of that ambulance service.

The council responded with a general verbal endorsement of the services rendered thus far by the Greenups, saying that they felt there was a great need for more community awareness of the service.

Mayor Terry Watts indicated that through a proposed membership subscription campaign for the ambulance service he would buy a membership myself for my family, but I've never been approached. No formal meeting date was arrived at or suggested at the meeting which would bring the three municipal governments together on the question.

In other business the council declined a request from artist Clyde Gray to compensate fully for an upcoming trip to England as representative of East Texas and Woodville specifically.

Council voted to only appropriate \$1,000 toward the trip. Gray said he (Continued on page 2A)

On Discrepancy Of Funds

No Action Taken Here

The Tyler County Commissioner's Court discovered at a meeting Monday that there was no legal action that body could take concerning the alleged discrepancy of funds in Precinct 3 Justice of the Peace Frank Grimes' office.

Several weeks ago, after the grand jury "no billed" Grimes on the discrepancy of funds matter, the Commissioners hired Woodville attorney John Kinney to study the matter and determine what action the Commissioner's Court should take. Kinney was to assist County Attorney Rols Brockman in preparing the report for the commissioners.

Kinney appeared before the commissioners Monday and informed the court that there was no action that the court could take. The only action that can be brought against Grimes at this time must be brought by a private citizen, Kinney reported. Kinney said that he and Brockman had visited with the county auditor and reviewed their statements and receipts and there are a number of discrepancies. District Attorney George Kirkpatrick was in attendance at the commissioners' meeting Monday and informed the court that the Grimes case had been thoroughly investigated by the grand jury. He explained that there was a difference in the burden of proof in civil and criminal cases. "Even though there were some irregularities, there was not sufficient evidence for criminal indictment," Kirkpatrick said. He did indicate, however, that there was possibly enough evidence for civil action in the matter.

Political Filings Reported

Persons who have filed as of Tuesday, January 15, for political office with Democratic County Chairman Morris Clemons are as follows:

- Tyler County Tax Assessor: Collector—Barbara Tolbert
- Tyler County Sheriff—Billy (Slim) Cowart, Herman Nolen, and Lewis E. Craven
- Commissioner, Precinct 1—Maxie Riley
- Commissioner, Precinct 3—Joe O. Godde and Leslie DuBoise
- Constable, Precinct 1—Jack Burns
- Constable, Precinct 4—J.L. (Sonny) Fowler

Kinney was in the process of responding to Kirkpatrick's remarks when Tyler County Judge Allen Sturrock called the court into executive session to discuss the matter. The commissioners remained behind closed doors for approximately 17 minutes before returning to the courtroom.

Commissioner Maxie Riley made a motion to accept Kinney's report and to discharge him from his duties. The motion passed.

County Attorney Brockman then asked for and was granted permission to hire an assistant county attorney for his office due to an increased caseload. (Continued on page 2A)

BOOSTER

Thursday, Jan. 10, 1980
Page TWO

OPINIONS Yours, Theirs, Ours

"I disapprove of what you say but I will defend to the death your right to say it." --Voltaire

Tyler County Viewpoint

What do you think about the high cost of gold?

CHRISTINE TOLAR
Most Everything



CHRISTINE TOLAR
Most Everything



CLYDE E. GRAY
Artist
"It will hit \$1,000 before it's over!"

WENDY THOMASON
Sales Clerk



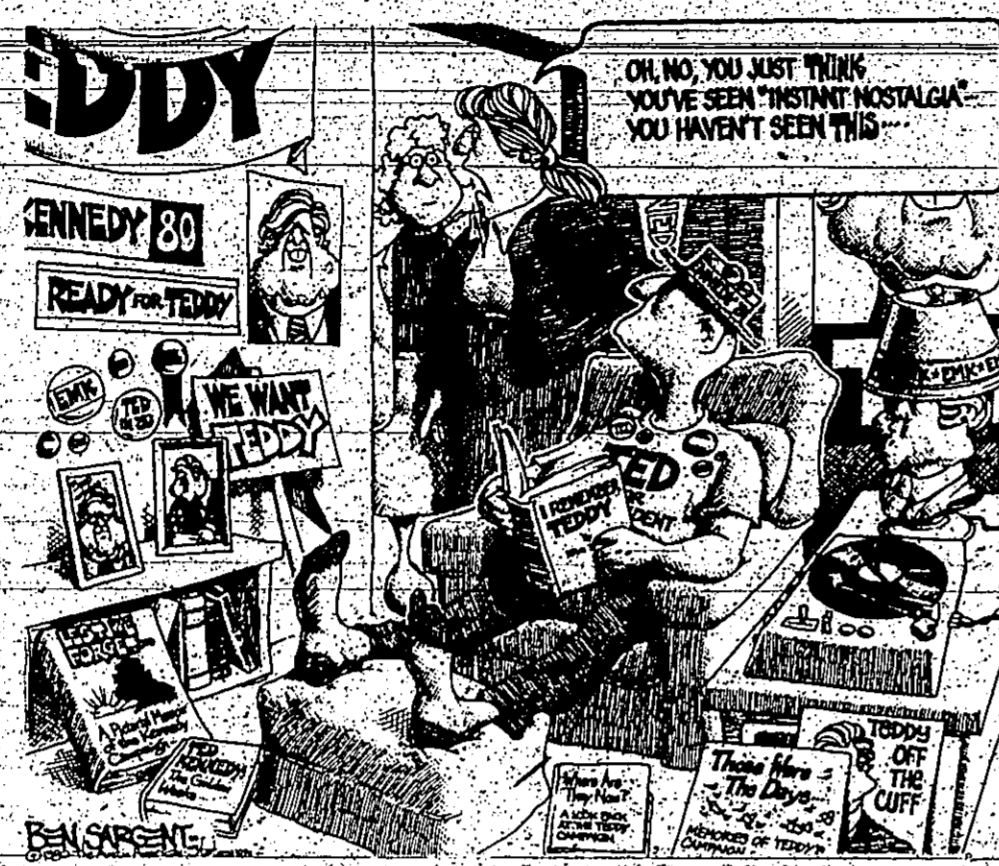
DOLLY STURROCK
Real Estate Broker

"The price of gold will go as high as \$700 per oz. We are coming into the one world monetary system, as the devaluation of the American dollar clearly shows. Silver also is going to increase as well as copper. Paper money will be worthless soon."

MRS. O.E. BAKER
Retired Seamstress



"I think it's terrible. It's going so high people can't afford to buy it. Sometime I'm afraid that it will fall down and people will lose all they have."



No Action Taken

In other action Monday, the commissioners approved the county treasurer's monthly report and the county extension report. Bids were scheduled to open on a 1966 truck but none were entered. The commissioners agreed to go out for negotiations for the disposal of the vehicle. The commissioners agreed to let bids on typewriters for the sheriff's office and the office of Justice of the Peace John Spanhans. The commissioners set holiday dates for county employees, selected members for the grievance committee and set terms for county court for the coming year. Sheriff Lewis Craven received permission to repair the band radio antenna which is used by the sheriff's department and county fire departments. The commissioners also approved a contract with the City of Chester to assist with street repairs. Maize Riley was named Airport Supervisor; Kenneth Lewis was named Dingy Supervisor; Judge Allen Sturrock was named Courthouse Supervisor with Justice of the Peace John Spanhans as his assistant. District Attorney Kirkpatrick requested that the county continue with financial assistance for a secretary in his office. The commissioners agreed to provide the assistance if confusion over grant funds with Hardin County is straightened out by March 10. The commissioners tabled a request for the formation of an Industrial Financial Corporation of Tyler County. The matter will be taken up at the Commissioner's Court meeting Friday.

Theater Group To Meet

The Woodville Little Theater's annual general membership business meeting will be held Tuesday, January 22, at 7:30 p.m. at the Dogwood Country Club. The play selection committee is reading scripts now to choose a play to be given during the summer. Refreshments will be served. All members are urged to attend the meeting, which also will be open to any non-members who are interested in joining. The Little Theater production will be "Variety '80," a variety show in the manner of the very popular "Variety '79," which will be presented March 1. The play selection committee is reading scripts now to choose a play to be given during the summer.

Ain't It Great

Clyde Gray of Heritage Village in Woodville is just about ready to leave on his trip to England. The trip is sponsored by the Texas Tourist Development Agency and British Caledonian Airways. Gray's group will be promoting the Houston Law Review, Phi Beta Kappa and the Order of the Barons Association, American Trial Lawyers Association, Texas Trial Lawyers Association, American Trial Lawyers Association, American Trial Lawyers Association and serves on the Administration of Justice Committee of the State Bar of Texas. Since April, 1976, he has practiced law in partnership with Deane and Gray in the firm of Taylor & Norwood at Liberty. He is a member of the State Bar of Texas, American Bar Association, American Trial Lawyers Association, Texas Trial Lawyers Association, American Trial Lawyers Association and serves on the Administration of Justice Committee of the State Bar of Texas.

Chamber Meets

The Chamber of Commerce held its first meeting of 1980 under the direction of new President Tom Knapp on January 7. Committee chairmen appointed for 1980 are Harold Hinton, Civic Improvement; Bert Best, Industrial Development; Don Stevenson, Membership; Mike Burrow, Publicity and Public Relations; Tom Knapp, Tourists and Eunice Bohannon, Woodville Retail Merchants. Don Cole was appointed to fill a one year unexpired term left from the resignation of Joe Riley. Plans for the 1980 banquet are now finalized. Tickets are \$8 each and are available from any director or at the Chamber office, 507 N. Pine Street. The banquet will be Friday, February 1, at 7:30 p.m., at the Woodville Inn. Guest speaker will be Ray A. Barnhart, a member of the State Highway and Public Transportation Commission of Texas. The public is invited.

Council Hears

The council discussed the front view of the road. We ride across the road in our cars. But how do you think it feels in a school bus? I realize I am only one family, but I feel more people are concerned. I'm also writing a letter to the Board of Supervisors concerning this issue. I am asking what is being done, false eyebrows, false noses, shoes, a green vest, all types of camping equipment and many yards of camouflage netting. The public is invited to attend.

Nolen Seeks

Phil and Debbie Hicks are the parents of a baby girl, Roxanne Reche, born January 12, weighing 8 lbs. 4 oz. Proud grandparents are Mr. and Mrs. Johnny Hicks, Spurger and Betty Smith, Lambert. Great-grandmother is Mrs. Pearl Callaway of Fred.

Robbery Suspects

The suspect is presently awaiting trial was set to begin January 15 and a extradition to Texas is planned shortly after the conclusion of the trial. Deputy Kraus is scheduled to go to the Chester, Starke, Elkhart, and Kingsville bank robberies. All bank personnel involved gave the same physical description, and the vehicles used were all stolen, camouflaged and abandoned within a short distance from the bank. Kraus said that when the suspect was arrested, law enforcement officers in Washington found two green money bags identical to the ones used in the Chester robbery night groups. Mike Allison, Certified Public Accountant at Liberty, has been designated "campaign treasurer" for the coming year. Officers will serve a two-year term. Parents, teachers and all those interested in the Woodville schools are encouraged to attend for the election of officers.

JOHN P. MORRISON, Publisher
MIKE BURROW, Editor/General Manager
FLORENCE WILLIAMS, Bookkeeper
JACKIE FLANAGAN, Receptionist
DIANE SUTTON, Advertising Director
MARY JANE STICK, Composition/Classified
NANCY LANGLEY, Typewriter/Subscriptions
MIKE & JUNE SIDORIC, Austin Bureau

The Tyler County Booster

Published every Thursday by Tyler County Publishers, P.O. Box 248, Woodville, Texas 75797. Entered as second class matter at the Post Office at Woodville, Texas, December 11, 1930 under act of Congress March 2, 1879. Second class postage paid at Woodville, Texas.

(USPS 645-550)
Published every Thursday by Tyler County Publishers, P.O. Box 248, Woodville, Texas 75797.
Entered as second class matter at the Post Office at Woodville, Texas, December 11, 1930 under act of Congress March 2, 1879. Second class postage paid at Woodville, Texas.

Member of TEXAS PRESS ASSOCIATION

Beaumont Art Exhibit Set

The Sarah Campbell Blaffer Foundation's new exhibition "A Golden Age of Painting" will begin a 30-city tour Jan. 22 when it opens to the public at the Beaumont Art Museum, 1111 Ninth St. The exhibition features such noted artists as Jacob van Ruisdael, Sir Anthony Van Dyck and Sir Peter Paul Rubens, will remain on view at the Beaumont Art Museum through Feb. 24. Museum hours are 10 a.m. to 5 p.m. Tuesday through Friday; 2 to 5 p.m. Saturday and Sunday. "A Golden Age of Painting" spans three centuries of Dutch and Flemish artistic activity. Religious subjects inspired 19th century painters. As the process of the middle class emerged in the 17th century, it became the primary patron of the arts. From paintings depicting scenes of daily life, we can see the luxuries of furnishings and banquets, and from portraits, their wealth in jewels and fine apparel.

TCM&PHA Meeting Thursday

The Tyler County Mental & Physical Handicap Association, Inc. will hold the first meeting of the new year Thursday evening, January 17, at 7 p.m. in the Commissioners' Courtroom. All members and interested parties are urged to attend this meeting.

Hello World

Mc and Mrs. Jim had 7 lbs. 10 oz. and T. Collier Jr. of Evadale made her 2-year old daughter, Kristi, very happy. Proud grandparents are Mr. & Mrs. Jim Collier, Mike Prince and Barbara Nelson. Annabeth. Amy weig.



Corrigan Beauty Pagents Set

The 1980 Imperial Auditorium, located on Highway 59 South at Miss Central East Texas and Imperial. Miss Corrigan Pageant will be held Saturday, Feb. 9, at the Corrigan-Camden High School. For additional information or entry forms, contact Mrs. Lennie Rutledge, telephone 398-4629, or mail to P.O. Box R, Corrigan, Texas 75939; or call Barbara Knox, 398-2005.

Services League To Meet

The Woodville School Service League will meet Monday, January 21, at 7:30 p.m. in Room 1 on the Wheat School Campus. The room is located just to the right of the front door. Committee reports will be given on projects completed since the September meeting. A Nominating Committee will be appointed for the election of officers for the coming year. Parents, teachers and all those interested in the Woodville schools are encouraged to attend.



MID-SOUTH BOYS QUARTET

Will appear
Ebenezer Baptist Church
Hwy. 255 - Jasper County
January 18 - 7:00 p.m.
NO ADMISSION

PUBLISHER'S COPY
CONSOLIDATED REPORT OF CONDITION
(Including Domestic Subsidiaries)

LEGAL TITLE OF BANK	CITY	STATE	ZIP CODE
CITIZENS STATE BANK	Woodville	Texas	75797
CITY	STATE	COUNTY	FEDERAL RESERVE DIST. NO.
1197	11	11	11
CLOSE OF BUSINESS DATE	December 31, 1979		

ASSETS

	MIN.	THROU.
1. Cash and due from banks	11.1	2
2. Due from other depositories and branches in process of collection	11.1	2
3. U.S. Treasury securities	11.1	2
4. Obligations of U.S. Government and agencies thereof	11.1	2
5. Obligations of States and political subdivisions in the United States	11.1	2
6. All other securities	11.1	2
7. Federal funds sold and securities purchased under agreements to resell	11.1	2
8. Total loans (including overdrafts) (Item 9) (From Schedule A, Item 8)	11.1	2
9. Loans (including overdrafts) (From Schedule A, Item 8)	11.1	2
10. Bank premises, furniture and fixtures, and other assets representing bank premises	11.1	2
11. Real estate owned other than bank premises	11.1	2
12. Letters of credit and customer liability on acceptances outstanding	11.1	2
13. All other assets	11.1	2
TOTAL ASSETS (Sum of Items 1-13)	11.1	2
LIABILITIES		
14. Demand deposits of individuals, partnerships, and corporations	11.1	2
15. Time and savings deposits of individuals, partnerships, and corporations	11.1	2
16. Deposits of United States Government	11.1	2
17. Deposits of States and political subdivisions in the United States	11.1	2
18. Deposits of our district, branches and other offices	11.1	2
19. All other deposits	11.1	2
20. Certified and official checks	11.1	2
21. Total deposits (Sum of Items 14-20)	11.1	2
22. Unearned discounts	11.1	2
23. Federal funds purchased and securities sold under agreements to repurchase	11.1	2
24. Intangible assets and other liabilities	11.1	2
25. All other liabilities	11.1	2
26. Mortgage indebtedness for which the bank is directly liable	11.1	2
27. Unsettled claims	11.1	2
28. All other liabilities	11.1	2
29. TOTAL LIABILITIES AND EQUITY CAPITAL (Sum of Items 21-28)	11.1	2
30. Subordinated notes and debentures	11.1	2
31. Advances to depository banks and investment houses	11.1	2
TOTAL LIABILITIES AND EQUITY CAPITAL (Sum of Items 29-31)	11.1	2

NOTE: This report must be signed by an authorized officer and attested by not less than three directors other than the officer signing the report.

I, the undersigned officer, do hereby declare that the Report of Condition including the supporting schedules has been prepared in accordance with the provisions of the Act and the regulations thereunder and that the same is a true and correct statement of the condition of the bank as of the date specified in the report.

SIGNATURE OF OFFICER AUTHORIZED TO SIGN REPORT: _____ AREA CODE TELEPHONE NO. _____ DATE SIGNED _____

NAME AND TITLE OF OFFICER AUTHORIZED TO SIGN REPORT: _____ We, the undersigned directors, attest the correctness of the Report of Condition including the supporting schedules and certify that we have read the report in conference with the report and the same is correct.

SIGNATURE OF DIRECTOR: _____ SIGNATURE OF DIRECTOR: _____ SIGNATURE OF DIRECTOR: _____

NAME AND TITLE OF DIRECTOR: _____ NAME AND TITLE OF DIRECTOR: _____ NAME AND TITLE OF DIRECTOR: _____

NAME AND TITLE OF DIRECTOR: _____ NAME AND TITLE OF DIRECTOR: _____ NAME AND TITLE OF DIRECTOR: _____

Join...
Our
Christmas Club

Take Santa's advice and join our Christmas Club now.
By next year's holiday time you'll have a tidy sum saved up for all your Christmas Shopping. It's easy!
Start your Christmas Club account today.

"Give Us A Chance To Say Yes"

**CITIZENS
STATE BANK**

P.O. BOX 109
WOODVILLE, TEXAS 75797
Phone 283-2561

EACH DEPOSITOR INSURED TO \$40,000
FDIC
FEDERAL DEPOSIT INSURANCE CORPORATION

Altar Society Meeting Slated

The United Methodist Altar Society will meet Thursday, Jan. 17, at 7 p.m. in the church. Members and other interested persons are urged to attend.

Winter Exercise Tips Revealed

Cold weather presents special challenges to joggers and others who want to exercise outdoors. But instead of giving up, joggers and others should follow these tips to help them cope with the cold.

Indian Youth Visit Library

Youth from the New Dawn in the Big Thicket, a talk with colored slides and records held by the American Studies Association of Texas and the American Folklore Society in Los Angeles in October.

Tyler County Scholastic News

Up To Date Reports On Area School Happenings. Compiled By Editor Karl Weeks

SEAMLESS GUTTERS

ALUMINUM COLORS Call Collect: C. Grady Holderman 283-3727 or 283-5446 Woodville, Texas

Chili Dinner Planned

An all day chili dinner will be held at the Spurger fire station on January 19. Tickets will be \$1.50. The proceeds will benefit the Spurger Volunteer Fire Department.

Church Plans Crusade Here

Rev. D.R. Clark, pastor of the Apostolic Tabernacle of Woodville, announces that a crusade will be conducted in the area of the United Pentecostals each night.

Bulldog Growls By Gina Temple

Second Annual Leggett Tournament Begins Year At Colmesneil High

The Colmesneil Girls and Boys participated in the 2nd Annual Leggett Tournament several weeks ago. In the first round of play, the girls played the Woodville Eagles, beating them 52-45.

The Eagle's Nest

By BOB CRESSLER. The game, which was held on Tuesday night, January 8, at the new Woodville gym, was where the Eagles beat the Woodville Dragons in the last seconds of the game.

Chester School Menu

- TUESDAY: Breakfast: Waffles, Syrup, Sausage, Juice. Lunch: Turkey and Dressing, Cranberry Sauce, Lemon Pudding, Bread, Milk.

Jacket Jive New Organization At Chester High

This is the first year that Chester High School has the National Honor Society. There are five seniors: Cheri Morris, Jeanne Vinson, Julius Johnson, Charles Walter, and Juniors: Rachel Hanson, Jimmy Wilson, Five sophomores: Patrick Cherry, Dale Flowers, Gale Flowers, Cheryl Vinson, and Laura Pace.

Woodville Lunch Menu

- Monday: Lunch: Corn bread, Milk, Wednesday: Lettuce & tomatoes w/ chicken, French fries w/catsup, Peanut cups, Milk.



A Child and His Pet. This boy loves his pet turtle. He feeds it, takes care of it, and loves it. He wants to be with it all the time. We're glad to see him growing up caring for and loving all kinds of pets.

Obituaries

Eloise Poncho. Funeral services were held for Eloise Poncho, 55, of Indian Village 2 p.m. January 10 in the Indian Village Assembly of God Church with the Rev. D.G. Searles officiating.

Obituaries

Ollie D. Trimble. Funeral services were held for Ollie D. Trimble, 69, 2 p.m. Friday, Jan. 11 in the Edwards Funeral Home with the Rev. James Best officiating.

Obituaries

Happy Birthday to the CANDIDATE JACK BURNS. A DEPENDABLE AND WILLING CANDIDATE FOR PRECINCT 10 CONSTABLE.

Obituaries

Happy Birthday to the CANDIDATE JACK BURNS. A DEPENDABLE AND WILLING CANDIDATE FOR PRECINCT 10 CONSTABLE.

WOODVILLE CONVALESCENT CENTER 283-2555. OGDEN CHEVROLET 837-2244. SOUTHEAST TEXAS SAVING & LOAN. DAVIS FOOD MARKET 547-3399. McCLURE FURNITURE 283-2519. A & M MOTOR CO. INC. 283-2534. The Tyler County BOOSTER. J.B. BEST & CO. Clothing and Shoes for the Family.

WOODVILLE CONVALESCENT CENTER 283-2555. OGDEN CHEVROLET 837-2244. SOUTHEAST TEXAS SAVING & LOAN. DAVIS FOOD MARKET 547-3399. McCLURE FURNITURE 283-2519. A & M MOTOR CO. INC. 283-2534. The Tyler County BOOSTER. J.B. BEST & CO. Clothing and Shoes for the Family.

Obituaries. Ollie D. Trimble. Funeral services were held for Ollie D. Trimble, 69, 2 p.m. Friday, Jan. 11 in the Edwards Funeral Home with the Rev. James Best officiating.

Obituaries. Ollie D. Trimble. Funeral services were held for Ollie D. Trimble, 69, 2 p.m. Friday, Jan. 11 in the Edwards Funeral Home with the Rev. James Best officiating.

JARROTT'S PHARMACY 283-2550. JARROTT'S PHARMACY 205 S. Magnolia. North South West MAGNOLIA DRIVE-IN GROCERY. KNAPP FORD SALES, INC. Tom Knapp, Pres. 283-2526. HARRINGTON ELECTRIC & PLUMBING SERVICE Colmesneil. WOODVILLE INN 'Woodville's Finest' Noon Buffet Daily Everyone. BROOKSHIRE BRO Woodville. CITIZENS STATE BANK 401 S. 10th St. WOODVILLE, TEXAS 75797.

JARROTT'S PHARMACY 283-2550. JARROTT'S PHARMACY 205 S. Magnolia. North South West MAGNOLIA DRIVE-IN GROCERY. KNAPP FORD SALES, INC. Tom Knapp, Pres. 283-2526. HARRINGTON ELECTRIC & PLUMBING SERVICE Colmesneil. WOODVILLE INN 'Woodville's Finest' Noon Buffet Daily Everyone. BROOKSHIRE BRO Woodville. CITIZENS STATE BANK 401 S. 10th St. WOODVILLE, TEXAS 75797.

Democrat And Used Car Sale. DEMOS. 79 Buick Lesabre, 4 dr. Sedan. Loaded. Factory warranty. List \$9554.65 Sale Priced \$7695. 79 Pontiac Bonneville Wagon Loaded. Factory Warranty List \$10,320.15 Sale Priced \$8295. 79 GMC 1/2 Ton Pickup - Sierra Classic. Loaded. Factory Warranty List \$8087.75 Sale Priced \$6595. USED CARS. 76 Buick Regal, 2 dr. cpe \$2495. 71 Chevrolet Impala, 4 dr. Sdn \$495. 72 Olds Delta 88, good work car \$495. 74 Pontiac Bonneville, 4 dr. Sdn \$1295. 73 Ford Ranchero \$1695. 70 Pontiac Grand Prix \$495. 72 Datsun Wagon \$695.

THE RUTH-BERRY JET PUMP. IT'S A PUMP IN A TANK. Minimum investment from \$1000. Financing available. Call for more information.

Office Supply Center 5% DISCOUNT. ON-OFFICE SUPPLIES FOR SCHOOLS AND TEACHERS. Clearing out older paperbacks - 10¢ each. 501 W. Bluff 283-5164.

CONSOLIDATED REPORT OF CONDITION (Including Domestic Subsidiaries). LEGAL TITLE OF BANK: Chester State Bank. COUNTY: Tyler. STATE: Texas. ZIP CODE: 75796. ASSETS: Cash and due from banks, 1,234,567; Loans, 1,234,567; Total Assets, 2,469,134. LIABILITIES: Demand deposits, 1,234,567; Total Liabilities, 1,234,567.

Emergency Heating Plans

COLLEGE STA- fort, and it could cause
TION — Make home- water lines in the
plans to set up a freeze- place, and cut a sheet
of wood-burning stove- plans Sue Young, ex-
or fireplace in case of a- board to "close" the
crisis. Set the stove on a close, the fireplace
Extension Service, The Texas Agricultural
Texas A&M University. Mrs. Young is in
Your effort and ex- pen- the Texas Agricultural
- disaster that may cut- Extension Service, The
off your normal heat- Texas A&M University.
source could have great- Supplies you'll
returns, says a housing- need for setting up a
and home furnishings- stove include stove pipe,
specialists. If you decide to set- a chimney, color, ad-
In severe weather, a- and stove-board damper-
heat source cut up- and-stove-board damper-
off could threaten your- Connect pipes to
personal safety and com- the stove, and the
steps: Adjust them in
their final position — to



Sgt. Will Hogan To Receive Recognition

Technical Ser- Sergeant Hogan with the 25th Air
geant Will T. Hogan, was named outstanding Division, a part of the
son of Carol D. Noncommissioned, of Tactical Air Command.
Marshall of Woodville, ficer of the quarter in his
recognition at Luke conduct, duty perfor- 1965 graduate of Terry
Al Force Base at mance and leadership. The sergeant is a
Sergeant Hogan serves Jacksonville, Jacksonville, Fla.

Sawyers To Hold Anniversary Project

John and Mac Sawyer of Woodville will observe their 40th wedding anniversary Sunday, January 20. Their three children, Mrs. Joe Nettles of Diboll, Mrs. Bill Terry of Bryan and Robert of Woodville, will host an open house for them at the Sawyer's home Sunday from 2 to 4 p.m. Mr. and Mrs. Sawyer were married January 20, 1940, in Woodville. Mr. Sawyer is retired from the Texas Highway Department. Friends and relatives are invited to attend the reception.

How much should you have to pay for fine quality eyewear?

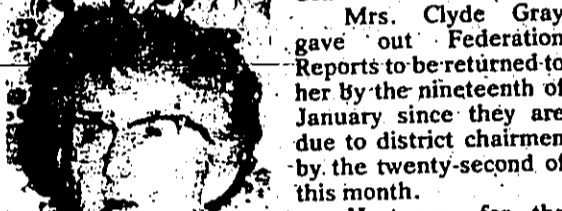
TSO believes people should be able to get fine-quality prescription eyewear at reasonable prices. We started with that idea in 1935 and we still offer the best values. You'll find TSO prices among the lowest. But TSO lenses are of the finest quality, made exactly to the doctor's prescription in one of the most modern lens laboratories in the country. Designer frames by Givenchy, Von Furstenberg and others—hundreds to choose from. Come to TSO. You shouldn't pay more, or accept less. Convenient credit available.



128 N. AUSTIN & JASPER
125-NORTH FIFTH STREET, SILSBBE

Women's Study Club Meets

Mrs. Carmen Cordero gave a slide demonstration of self-examination for breast cancer to the members of the Women's Study Club at their meeting Tuesday, January 15, in the home of Mrs. George Tubb. She emphasized the importance of monthly self-checks and twice-yearly examinations by a physician. Mrs. Cordero was introduced by Mrs. Ivison Grimes.



Mrs. Clyde Gray gave out Federation Reports to be returned to her by the nineteenth of January since they are due to district chairmen by the twenty-second of this month. Hostesses for the meeting, in addition to Mrs. Tubb, were Mrs. Clyde Bennett and Melanie Tubb.

Ruby Bellamy Honored For Service

Ruby Bellamy was chosen as the January Civic City's Woman of the Year 1979 and she has fulfilled this position to the fullest. She is Sympathy, Sunshine and Telephone chairperson; sending birthday, sympathy and get well cards not only to members of the Civic Club but to all residents of Ivanhoe and other people she meets. She is really interested in people and always has love and kindness to all. Mrs. Bellamy is a charter member of the club and has been the epitome of a civi-minded person. As 1980 rolls around the club wishes her well and hopes she will continue her good work.

Bond Sales Reported

September Sales of Series E-H United States Savings Bonds in Tyler County were reported today by County Bond Chairman David Feagin to be \$2,716. Sales for the nine month period totaled \$46,453 for 38% of the 1979 sales goal of \$80,000. Texas sales during the month amounted to \$23,376,954 while sales for the first nine months of the 1979 totaled \$210,961,266 with 67% of the yearly sales goal of 297.2 million achieved.

Grammer's Grocery
1403 W. Bluff
Woodville
283-2520
Jan. 16-17-18-19, 1980

Yellow ONIONS 10¢ lb.	Green CABBAGE 10¢ lb.	Del Monte Cream Style 16 1/2 Oz. CORN 2/89	Del Monte PEAR 29 Oz. HALVES 89¢
Kraft's BAR-B-QUE SAUCE 28 Oz. \$1.49	RAGU SAUCE 15 1/2 Oz. 89¢	WOLF 24 Oz. CHILI \$1.89	1/2 Gal. Borden's Old Fashioned ICE CREAM \$1.49
1 Gal. Milk \$1.99	MAC & CHEESE DINNER 49¢		

USDA Choice Beef
ROUND STEAK \$2.39 lb.
SIRLOIN STEAK \$2.99 lb.
T-BONE STEAK \$3.19 lb.
BONELESS CHUCK STEAK \$1.99 lb.
BONELESS CHUCK ROAST \$1.89 lb.

Ground (3# or more) CHUCK \$1.59 lb.
Loin TIP ROAST \$2.29 lb.
RUMP ROAST \$2.19 lb.
Center CUT PORK CHOPS \$1.99 lb.
Maple River HAMS \$1.49 lb.

Concerned About Gasoline Prices? Then Consider Ford's New 1980 Pickup For Outstanding Gas Mileage!

EPA Mileage Ratings for the Ford 6 Cyl Standard Pickup:
Highway 25 MPG
City 18 MPG
Combined 20 MPG

Choose today from an excellent selection of 1980 Ford Pickups at

KNAPP FORD SALES INC.

Intersection of Highways 69 & 287 - Woodville 283-2526

The Tyler County BOOSTER CLASSIFIED ADS GET RESULTS

TYLER COUNTY BOOSTER CLASSIFIED AD PRE-PAYMENT POLICY
ALL CLASSIFIED WORD ADS MUST BE "PAID IN ADVANCE" THANK YOU

HELP WANTED
Wanted: Leading building material company operating for Sales Representative. We offer base plus commission, protected territory, stock purchase plan, retirement plan, unlimited earning, good resume of job related background. Adams & Co. Box 208 Beaumont, TX 77704 3-3c

HELP WANTED
Wanted: Temporary Laborers Needed for indefinite period of time. Agricultural experience preferred. Contact the GETA Employment Office 283-2975 or International Paper Co. 283-7426 before Jan. 23, 1980. 3-10p

HELP WANTED
Wanted: Temporary Laborers Needed for indefinite period of time. Agricultural experience preferred. Contact the GETA Employment Office 283-2975 or International Paper Co. 283-7426 before Jan. 23, 1980. 3-10p

Classified Ads Call 283-2569

FOR SALE: 615 truck had good 4 wheel drive large vehicle for sale or trade. 3-10p

FOR SALE: Registered Brantman 2-cv. dirtbikes. 3-10p

FOR SALE: 1978 Chevy Van standard shift - 6 cylinder - A/C - power windows - radio - 3-4p

FOR SALE: 1973 Mazda station wagon, 895. Refrigerator/Freezer. PS - Very clean - 810 - 283-5416 or 283-5474. 3-10p

FOR SALE: Chevy Malibu 55,000 miles, one owner, good 283-5416 or 283-5474. 3-10p

FOR SALE: 1978 Chevrolet pickup, \$1500. Call 283-3416 after 6 p.m. 3-10p

FOR SALE: 70 Buick Regal Limited full power seats, doors, wire wheels. Ver. clean - 2807 miles. \$2200. Call 827-2913. 3-10p

FOR SALE: 1972 Chevrolet Impala, Air conditioned, PB, 4 wheels. Ver. clean - 2807 miles. \$785. 283-2654. 3-10p

FOR SALE: Ford F-500 Log truck with 1979 Interim Ford Trailer. All in good condition. New tires. Call 283-2300. 3-10p

PETS FOR SALE
FOR SALE: German Wirehaired Pointers - AKC - Registered, 6 weeks old. Ver. clean - 2807 miles. \$2850. 547-2888. 3-10p

FOR SALE: 1972 Dodge Club Cab. 14 ton full power & automatic. New factory motor. Low mileage. 827-5284. 3-10p

FOR SALE: 1977 Dodge Club Cab. 14 ton full power & automatic. New factory motor. Low mileage. 827-5284. 3-10p

FOR SALE: 1977 Dodge Club Cab. 14 ton full power & automatic. New factory motor. Low mileage. 827-5284. 3-10p

FOR SALE: 1977 Dodge Club Cab. 14 ton full power & automatic. New factory motor. Low mileage. 827-5284. 3-10p

Lifetime Vinyl Siding

REPLACE OLD WOOD WRAP ALL WOOD & NEVER PAINT AGAIN
CALL 385-2479
Silsbee
FOR FREE ESTIMATES

JANUARY USED CAR CLEARANCE

74 Chev. Caprice-Loaded \$1895	79 Granada 2-dr. Power and air \$4895	78 Chev. 1/2 Ton, standard shift \$2895	71 Chev. 4-dr., Air and power \$695
78 Ford Mustang, 12,000 miles, one owner \$4095	78 Ford Ranger F150, Loaded and nice \$4495	73 Ford Torino, Extra clean \$1395	75 Chev. Monte Carlo, Super Nice \$2495
76 Mercury Comet, Power and Air, NICE \$2695	Nice selection of older model work cars - \$250-\$400		75 Chev. 1/2 Ton, Loaded & super good \$2995
74 Lincoln Town car, Luxury deluxe \$1695	73 Pinto Station Wagon Low Miles & Super Clean Economy \$1295	77 Pinto Station Wagon, Power and air, low miles \$3195	75 Mercury Comet, 4 door, extra clean, 6 cyl. \$1795
78 Ford Courier, Runs & Looks Super \$3995	78 Chev. LUV truck, 15,000 miles, one owner \$4295	75 Ford Chateau Van, Loaded \$3695	70 Ford 1/2 Ton, Ru go! new \$1095

KNAPP FORD SALES, INC.

283-2526
Intersection of Highways 69 & 287 - Woodville

MOBILE HOME NOW SALES OPEN

N-TEX OF WOODVILLE
Highway 69 North

HOMEWORKERS WANTED
Stuff Envelopes! We Pay 30¢ each!
Information send Stamped, Self-addressed Envelope to - Syntex Enterprise, P. O. Box 1501, Bloomfield, N. J. 07003

MADAM BLACK READER & ADVISOR

SICK, BLUE AND DISCONTENTED? IF SO, HERE IS A MESSAGE OF HOPE! READ IT AND THEN ACT AT ONCE! RICH AND POOR, WHITE AND COLORED, MEN AND WOMEN OF ALL RACES AND WALKS OF LIFE.

Advices on all affairs of life. There is no problem that she can't solve. Tells you how to hold your job, when you have failed and how to succeed. Will tell you your troubles and what to do about them. Reunite the separated. She will tell you what you wish to know regarding health, marriage, love, divorce, courtship, speculations and business transactions of all kinds. Upon reaching womanhood, realizing that she had the God-given power to help humanity, MADAM BLACK has devoted a lifetime to this work. From the four corners of the world they come to her. White and colored, men and women of all races and all walks of life.

Guaranteed to remove evil influence and bad luck. There is no pity for those knowing they are in hard luck and need help and do not come for it. One visit will convince you. MADAM BLACK is superior to any other reader you have seen. Gives lucky days and lucky hands. Lifts you out of sorrow and darkness and starts you on the way to success and happiness. You owe it to yourself to consult this gifted lady. MADAM BLACK invites you to her home. From 8 a.m. - 11:00 p.m. including Sunday.

Look for Reader & Advisor sign in front of home
4 Mi. North of Woodville on Highway 69
283-2495

CLASSIFIED AD MAIL-O-GRAM

20 WORDS \$3.20 Add 16¢ for each additional word over 20 words

WRITE YOUR AD BELOW & MAIL TO:
Tyler County Booster
P.O. Box 248 - Woodville, Texas 75799

Name _____ Address _____ Phone _____
Run my ad _____ Weeks _____
Payment Enclosed _____

Jury List

Patricia Brown, district clerk in Tyler County, has released the following names to serve for Petit Jurors for January 21, at 9 a.m., Hoober Monte D. Saville is the presiding judge.

List No. 2 of the Petit Jurors drawn on the 14th day of December, 1979, is the 1-A District Court of Tyler County:

Jack Allan Best, Woodville; Tamara E. Bester, Spurger; R.A. Grimes, Colmesneer; Paul E. Walker, Woodville; Robbie Crawford, Crawford; Woodville; T.P. Crews, Woodville; Mrs. Catherine Stange, Crawford; Woodville; Frank-John Crooks, Warren; Della Conter, Woodville; Virginia May Daniel, Woodville; Virginia May Jackie Telford Barfield, Woodville; Paul Lewis Sanders, Woodville; George C. Hess, Rockland; Laura Phillips Russell, Woodville; John E. Hines, Rockland; Charles Riley, (Mrs.), Doucette; Robert Richardson, Colmesneer; Woodrow Bell, Colmesneer; L. H. Hines (Mrs.), Spurger; Thelma Fowler, Colmesneer; Foster, Hillister; Martha McAlpin Swiney Warren, Warren; Charles Walden, Warren; Alton Terrell, Doucette; Gail Stephenson Blankenship, Fred; Teresa Hart Dorsey, Woodville; Williams Howard Doyle, Colmesneer; Mrs. Dawn Vidrine, Lina; Linda Rhodes Dickens, (Mrs.), Woodville; Henry J. Deaton, Colmesneer; Varnay L. Durham, Woodville; John Douglas, Woodville; Sheri L. Dooze, Colmesneer; Eronda-Mary-Eaves, Woodville; Alma Dove Elliott, Hillister; Magaline Peas Coats, Warren; James Eavins, Woodville; Debra Ann Farmer, Woodville; Lillian Lumpkin Fairgaird, (Mrs.), Woodville; Ellen Barter Brown, Spurger; Herman Buel, Woodville; Jackson Apolonio Buevsky, Woodville; C. L. Browne, (Mrs.), Woodville; Thomas Austin, Hillister; Woodville; William Thom, Colmesneer; Constance Comasneer, Madeline Collins; Vivigone Helms, Colmesneer; Warren, Rockland; Clark, Hillister; Francis Small Conner, Warren; Lisa Mae Baby, Hillister;

Bid Bean, Doucette; Mrs. E.L. Boykin, Woodville; Billy J. Jordan, Boykin; Tom Edmore, Doucette; Jack M.L. Fluke, Hillister; Victor L. Reese, Colmesneer; James D. Dugree, Spurger; Mrs. Winnie Brown, Spurger; Mrs. Winnie Brown, Rockland; Mae V. Conter, Doucette; Betty Ann Lumbert, Doucette;

Walter, Kathryn; Hartson, Woodville; Jay A. Berlin, Colmesneer; Jeanie Austin-Garford, Woodville; Robert Homer Barnes, Colmesneer; John A. Smart, Fred; Allen Ray Baugh, Warren; Henry Dean, Colmesneer; Theodor Bell, Colmesneer; Mrs. Audrey Nancy Berg, Woodville; Pauline E. Bridge, Warren; M.M. Birdwell, Woodville; Emily Vason Best, Woodville; Soney Paul Blanchard, Woodville; Gerald Revel Fordon, Woodville; J.J. Bolding, Warren; Lloyd David Brooks, Rockland; Sybil Frances Seamans, Chester; Gary Wayne Johnson, Woodville; Shirley Crosby Taylor, Spurger; Billy G. Traylor, Woodville; Lisa Mae Turner, Woodville; Claud Pitts, Woodville; Richard H. Lyle, Jr., Spurger; Michael Ray Robertson, Colmesneer; Hazel Welch Colmesneer; Rebecca Beth Woodville; Lavette Covart Brown, Rockland; Peggy J. Brassard, Woodville; Linda Westbrooke Burns, Woodville; John Willie Bussard, Warren; Owen Bruce, Woodville; Donald A. Anderson, Woodville; Linesta Callaway, Woodville; Fred David Laurens, Eaves; Woodville; Delphis Ellington, Rockland; Lindsey Coats, Warren; Carlton Farmer, Woodville; Earl Ewing, Woodville; Robert Frazee, Woodville; CF Forworth, Woodville; Tarran Ann Foster, Hillister; Joseph Forstberry, Woodville; Martha Ann Fitts, Woodville; Harold Frazier, Woodville; Andrew H. Carney, Hillister; Laura Parson Carney, Colmesneer; Austin Fuller, Woodville; Lillie Carney, Doucette; Sealwood Stradley, Woodville; Hazel Jones Jackson, Woodville; Jane Mann Woodville; Bobby O. Jackson, Spurger; Robert Vernon Mahaffey, Sr., Chester; Samp Brookshire, Warren; Betty Brown, Woodville; Elsie McDonald McElroy, Chester; Earline McKee, Silas;

Miller's BIG STAR

BIG & FAT HENS 59¢

JIMMY DEAN PORK SUASAGE 129¢

FRESH GROUND BEEF 159¢

CHUCK ROAST 149¢

THIS WEEK'S JACKPOT \$2,200

GLADIOLA FLOUR 5 LB. **79¢**

COCA COLA 3/4 1

DEL MONTE VEGETABLES 3/4 1

FRISKIES DOG FOOD 25 LB. **5.99**

HEAVY BEEF BONELESS STEAKS	LB.	\$1.89	TURKEY DRUMSTICKS	LB.	39¢
HEAVY BEEF BONELESS STEW	LB.	\$2.19	CENTER CUT PORK CHOPS	LB.	\$1.69
HEAVY BEEF CUTLETS	LB.	\$2.19	BREAKFAST CUT PORK CHOPS	LB.	\$1.79
DUIN SPECIAL BACON	12 oz.	99¢	MARKET SLICED BREAKFAST HAM	LB.	\$1.99
BABY BEEF LIVER DEVEINED	LB.	99¢	FRESH PORK BONE	LB.	29¢
SMOKED TURKEYS	LB.	\$1.29	KRECK PARTY PUPS	12 oz.	79¢
BUTTERBALL TURKEYS	LB.	89¢	KRECK BACON ENDS	3 LB.	\$1.19
BURKE BEEF PATTIES	3 LB.	\$3.29	MAPLE RIVER BREAKFAST ROLL	12 oz.	69¢
DRY SALT PORK	LB.	79¢	FRYER LIVERS	LB.	69¢

MAXWELL HOUSE COFFEE 289¢

EL CHICO DINNERS 79¢

GLADIOLA CORN MEAL 79¢

DELTA TOWELS 99¢

BORDERNS BUTTER-MILK 89¢

WHOLE FRYERS 49¢

LARGE LETTUCE 39¢

BOLD III GNT. \$1.79

IVORY LIQUID 48 oz. \$1.89

PRICES GOOD WED. JAN. 16 THRU TUES. JAN. 22	
PINTO BEANS	4/100
BLACK EYE PEAS	4/100
DRESSING	59¢
BATH TISSUE	\$1.69
PEANUT BUTTER	99¢
BABY LIMA BEANS	39¢
VANILLA	39¢
PORK & BEANS	4/100
CRACKERS	69¢
COTTAGE CHEESE	69¢
NOODLE SOUP	3/89
APPLE JUICE	79¢
JUICE	79¢
DLEO	59¢
HOMINY	5/100
SPAGHETTI	4/100
DRESSING	59¢
FACIAL TISSUE	2/99
POUND CAKE MIX	69¢
BLACK PEPPER	79¢
PINEAPPLE	49¢
SHORTENING	\$1.59
OREOS	\$1.29
SOUR CREAM	49¢
DETERGENT	89¢
CORN FLAKES	79¢
DOG FOOD	5/100
IVORY	79¢

ERA \$2.89

WOLF CHILI 69¢

CARNATION RICH HOT COCOA 69¢

Budgets Aid Economy Crunch

COLLEGE STATION - "Terrorist habits" for "terrible budgets" are one answer to the economy "crunch" starting with this month.

"Use it up, wear it out, make it do, do without."

Start with some workable ideas from Bonnie Pierson, a family resource management specialist with the Texas Agricultural Extension Service, the Texas A&M University System - then add your own ideas.

Agri Bankers To Meet

COLLEGE STATION - A discussion of "Governmental Effects on Texas Agriculture" by Congressman E. "Kika" de la Garza, chairman of the House Agriculture Committee, will be one of the highlights of the "EAT" and Ranch, Credit, Conference for Commercial Bankers.

The conference will be Feb. 11 and 12 at the Rudder Center on the Texas A&M University campus, announced Dr. Richard Trimble, economist with Texas Agricultural Extension Service, the Texas A&M University System.

Remove grease on double knits by applying club soda to the spots.

To eliminate white hem lines on old blue jeans, mix permanent blue ink with water and apply it to the jeans with a small brush.

Avoid the temptation to buy more appliances - take inventory of those you already own. Many probably will do lots of the same household tasks as new products.

Spends a few minutes reviewing instruction booklets that came with your own appliances. Re-reading the booklets will refresh basic information and give you new ideas.

Don't Buy Products on Impulse

First, ask yourself, "Can I do without it?"

Many impulse purchases turn out much less suitable than they seemed at first.

Make your soap money.

Melt leftover bar soap by heating it in a microwave oven - place it on wax paper and heat until soft, remove it and carefully shape it into one large piece of soap - it will harden quickly.

Or make liquid hand cleaner by placing leftover pieces of bar soap in a jar with a small amount of water.

If spots and stains have "settled" some of your clothing, try these salvage steps:

Remove ballpoint ink by applying generous amount of hair spray, then rub gently with a clean dry cloth.

Remove grease on double knits by applying club soda to the spots.

To eliminate white hem lines on old blue jeans, mix permanent blue ink with water and apply it to the jeans with a small brush.

Avoid the temptation to buy more appliances - take inventory of those you already own. Many probably will do lots of the same household tasks as new products.

Spends a few minutes reviewing instruction booklets that came with your own appliances. Re-reading the booklets will refresh basic information and give you new ideas.

THRIFTY SAVER SPECIALS

CRISCO \$1.59

SPAM 69¢

CHARMIN BATH TISSUE 49¢

THRIFTY SAVER SPECIALS

WOLF CHILI 69¢

CARNATION RICH HOT COCOA 69¢

THRIFTY SAVER SPECIALS

WOLF CHILI 69¢

CARNATION RICH HOT COCOA 69¢

Grain Embargo Adds Uncertainty

COLLEGE STATION - The U.S. embargo of grain shipments to the Soviet Union injects a major new element of uncertainty into the grain market, say two economists with the Texas Agricultural Extension Service, Texas A&M University System.

"The added uncertainty injected into the grain market is of both a short and long run nature," point out Dr. Ron Knutson, an economist in marketing and policy, and Dr. Roman Smith, a grain marketing specialist.

Although immediate price impacts may be large, a grain marketing specialist, Knutson and Smith expect the price of wheat and feed grains over the next year to be 10 to 15 percent lower than it would have been if the embargo had not been imposed.

Russian purchases in the 1979 market year were expected to total 18 million metric tons of feedgrains and 7 million tons of wheat, note the economists.

"This represents 12 percent of the U.S. wheat production and 8 percent of the feed-grain production. Russia's purchases are expected to be about 18 percent of U.S. wheat exports and 25 percent of feedgrain exports."

As a result of the embargo, U.S. grain exports to the Soviet Union will be limited to 9 million metric tons, and the mix expected to be 3 million tons of wheat and 5 million tons of feedgrains. "This represents about a 6 percent reduction in both the total demand for wheat and in the total projected U.S. feedgrain production," point out Knutson and Smith.

"The projected price impact will be greater than the percentage decline in demand due to the inelastic nature of the demand for grains," note Knutson and Smith.

The embargo also will keep the opening price of wheat and feed grains sensitive to any change in the supply of grain, they say.

"The longer-term impact of the embargo is based on the expanded livestock and poultry production and the ability to import feedgrains and feedstuffs," note Knutson and Smith.

The embargo also will keep the opening price of wheat and feed grains sensitive to any change in the supply of grain, they say.

"The longer-term impact of the embargo is based on the expanded livestock and poultry production and the ability to import feedgrains and feedstuffs," note Knutson and Smith.

Estate Planning Seminar

COLLEGE STATION - Professional estate planners will sharpen their skills to better serve their clients by participating in an Estate Planning Seminar at Texas A&M University, Jan. 28-29.

As a result of the embargo, U.S. grain exports to the Soviet Union will be limited to 9 million metric tons, and the mix expected to be 3 million tons of wheat and 5 million tons of feedgrains. "This represents about a 6 percent reduction in both the total demand for wheat and in the total projected U.S. feedgrain production," point out Knutson and Smith.

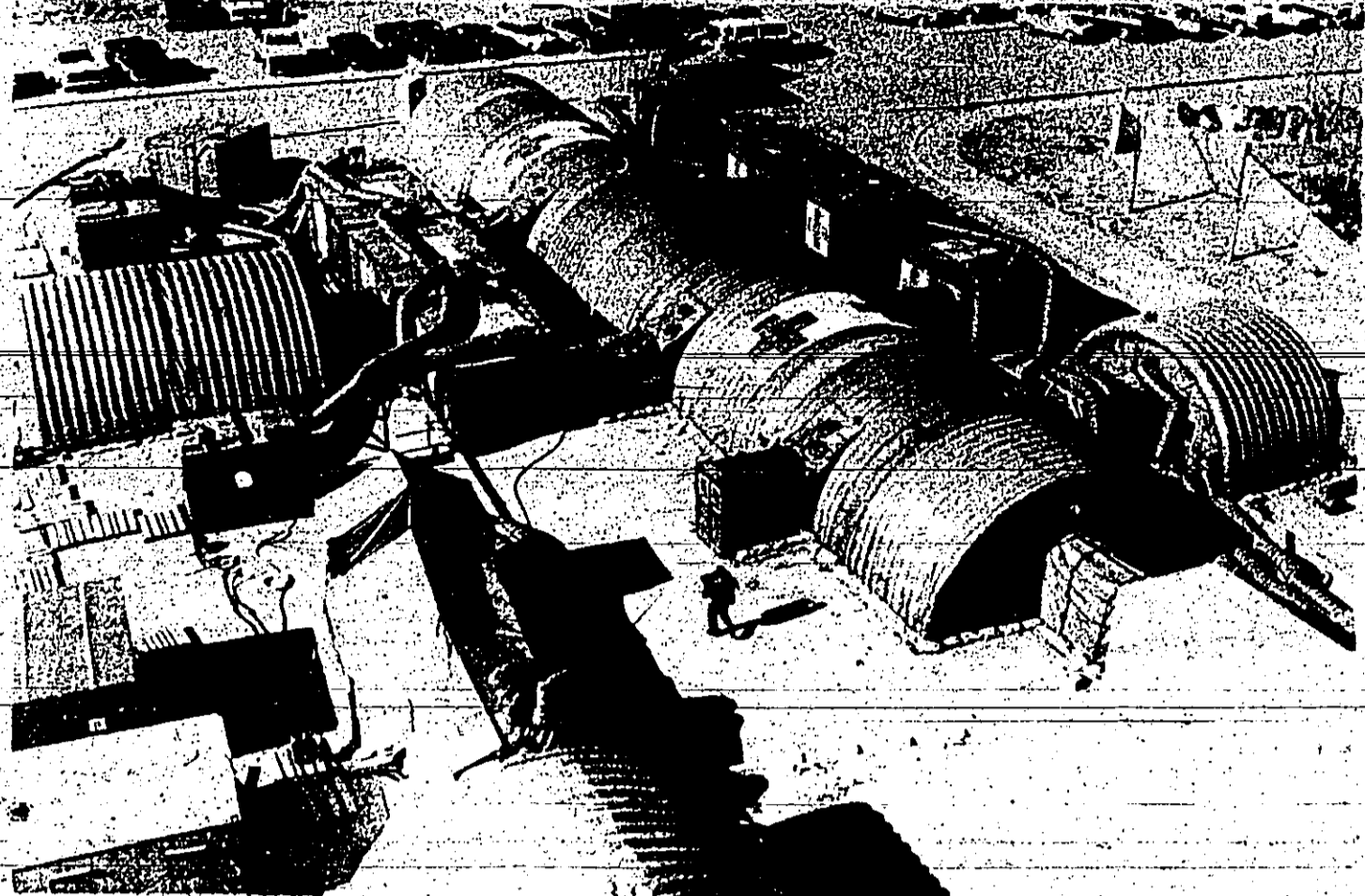
"The projected price impact will be greater than the percentage decline in demand due to the inelastic nature of the demand for grains," note Knutson and Smith.

The embargo also will keep the opening price of wheat and feed grains sensitive to any change in the supply of grain, they say.

"The longer-term impact of the embargo is based on the expanded livestock and poultry production and the ability to import feedgrains and feedstuffs," note Knutson and Smith.

The embargo also will keep the opening price of wheat and feed grains sensitive to any change in the supply of grain, they say.

"The longer-term impact of the embargo is based on the expanded livestock and poultry production and the ability to import feedgrains and feedstuffs," note Knutson and Smith.



MASH NOW MUST-Looking like a giant octopus, the Medical Unit Self-contained Transportable (MUST) is an instant extension of the Gallup Indian Medical Center, Gallup, New Mexico. It is kept inflated by turbine

power generators. The MUST was requested by the Indian Health Service to alleviate the anticipated overcrowding of patients due to remodeling of the main hospital. (U.S. Army Photo by Ruben Rodriguez).

Warren Man Assigned To Modern 'MASH' Hospital

GALLUP, N.M.—hospital provides a much-needed medical service to the Navajo and Zuni Indian communities. Crews from Ft. Riley are scheduled to rotate every 60 days until renovation of the modern "day" version known as a MUST. Army 1st Lt. William A. Motley Jr., son of William A. Motley Sr. of Warren, is a medical services officer with the 10th Medical Support Hospital stationed at Ft. Riley, Kan. in October. Motley and 40 members of his unit came to Gallup to help the Indian Health Service set up a portable hospital that operates while patients of the Gallup hospital are being transferred.

caused severe overcrowding at the hospital. This left little space to move patients around. Someone on his staff suggested they call the military for a "MASH" unit like the one on television to help alleviate the space problem. "I contacted the military and they came up with the unit from Riley. Without this unit, we couldn't have provided patient care," he said. The portable hospital Motley works in is called a Medical Unit Self-contained Transportable, or "MUST" for short. The MUST is an inflatable structure that closely resembles a giant air mattress. It is made up of a combination of rubber and nylon expandable shells on each side that looks like "cracker boxes." These shells contain the operating rooms. The MUST is kept alive with several turbine-powered portable generators that provide the hospital with the necessities of heat, air, and electricity. Large air ducts which look like octopus tentacles are seen on the outside of the MUST. They carry heat and ventilation into the MUST. The generators which must respond to temperatures as low as five degrees at night to warm 50 degree mercury readings in the daytime. Only a portion of the actual field hospital was needed at Gallup. Ten sections were put together to form a nucleus which had to fit in the parking lot behind the main hospital. The MUST has two operating rooms, two rooms designed for obstetrics care, a food preparation unit, and a medical sterilization unit. Motley said he found the work in Gallup both rewarding and challenging. "This assignment gave me the opportunity to coordinate the initial establishment and operation of this mission. The amount of planning involved in the field of logistics as well as medical support is enormous and I consider it a privilege to have been chosen to engineer this coordination program."

Beef Seminar Slated

By CLINTON CURRIE County Extension Agent

One of the State's best beef cattle programs is coming to this area. This Beef Cattle Seminar will cover future markets, brood cow care, external parasites, internal parasites, disease control, equipment, nutrition, and the new brucellosis control program. The program is planned by the B.E.F. Committees of Jasper, Newton, and Tyler Counties. Registration will begin at 8:30 a.m. in the First National Bank in Jasper, Saturday, January 19. There will be a \$5.00 per person registration fee which will include Barbecue Lunch. Please pre-register if at all possible by calling the County Extension Office 283-2482. The program for the Seminar for January 19 is as follows: 9:00 a.m.—Bill Stewart—Beef Cattle Equipment and Plans for Cattle. 9:35 a.m.—Frank Ors—What are breeding for? The types of brood cattle—dams and sires—to give what the market needs and wants. 10:25-10:35—Coffee. 10:35-11:30—Randall Grooms—Reproduction. Nutrition, Implanting, and other management techniques. 11:30-11:45—Wayne Taylor—Economics of Cattle Enterprise. 11:45-12:45—Barbarye Luch—\$5.00. 12:45-1:15—James Robinson—External parasites—materials, and precautions. 1:15-1:30—Wayne Taylor. 1:35-2:10—Ernie Davis—Furres, cow numbers, etc. 2:10-2:20—Coffee. 2:20-3:00—Dr. Armstrong—Internal parasite control—heart health programs, vaccination, and care, ending with the current Brucellosis changes that are expected. Educational programs conducted by the Texas Agricultural Extension Service serve people of all ages regardless of socioeconomic level, race, color, sex, religion, or national origin.



WARREN MAN—First Lt. William A. Motley Jr. of Warren keeps things running smooth inside the MUST hospital at the GMC, Gallup, N.M.

Wilson Supports Help For Elderly

WASHINGTON—Last July, senior citizens received a 9.9 percent increase in their Social Security checks. But they won't see another one of those increases until July 1980, and I'm sure that fact doesn't give them much comfort as they watch the monthly rate of inflation on elderly watch the monthly rate of inflation, Wilson said. The consumer price index has risen at an annual average of over 1 percent a month, and that translates into a 10 percent loss in purchasing power for senior citizens on fixed incomes, Wilson said. "We can cut that loss in half by providing cost-of-living increases twice a year instead of only once," Wilson said. The Advisory Council on Social Security endorsed this legislation, and it is expected to receive strong bipartisan support in both the House and the Senate.

Mrs. Davis Receives Promotion

DIBOLL—Mrs. Vivian Davis, formerly of Woodville, has been promoted to Industrial Hygiene Technician in the Environmental Affairs Department of Temple-EasTex, Inc. Don Cox, Director of Industrial Hygiene for Temple-EasTex, announced the promotion. Mrs. Davis joined Temple-EasTex in 1969 as a time-keeper. In 1975, she moved up to the position of personnel records clerk, and in 1977 became safety and training technician, her most recent post. In her new job, Mrs. Davis will be working in the East Texas section of the Environmental Laboratory. Mrs. Davis, a Woodville native, graduated from Kirby High School in Woodville. She attended Sam Houston State University, and is currently attending Lamar University, where she is working toward a Bachelor's degree in Industrial Technology. In her spare time, Mrs. Davis enjoys water skiing, fishing and hunting. She and her husband, James, have one daughter, Dayle. The family resides in Silsbee.

TRAPPERS: Buying fur 7 days a week in Spurger, Texas (Old Post Office). Spurger Fur Co. 713-429-3553



FREE WASHER AND DRYER ON ALL '79 MODELS. FEATURING FESTIVAL AND BROADMOOR BY FLEETWOOD KITE BROS. MOBILE HOMES CO., INC. HWY. 96 JASPER, TX. 384-5427

Colmesneil News

Late Announcements: Pauline Prouse, niece of the late Mrs. C. J. Ogden, died Jan. 9. She was 92 years old. She was born in Colmesneil, Texas. She was a member of the Methodist Church. She was preceded in death by her husband, C. J. Ogden, who died in 1945. She is survived by her son, C. J. Ogden, Jr., and his wife, Lulu. She is also survived by her daughter, Mrs. A. B. Boyette, and her son, Charles. She was buried in the Colmesneil Cemetery on Jan. 11. The funeral was held at the Methodist Church on Jan. 10. The Rev. Hub Stewart officiated. Burial was in the Colmesneil Cemetery.

Evangelism Conference in Fort Worth. Mr. and Mrs. C. J. Ogden and grand-children, Carrie and Jeff Rushing, spent the weekend with her sister, Mrs. A. B. Boyette, and her husband, Charles, in Colmesneil, Texas. The family is in the loss of her brother, Mr. Leo Atkinson, who died in the loss of his wife, Lulu. To Helen Richardson in the loss of her brother, Mr. Charles the Leo Atkinson, and family in the loss of his wife, Lulu. To Helen Richardson in the loss of her brother, Mr. Charles the Leo Atkinson, and family in the loss of his wife, Lulu. To Helen Richardson in the loss of her brother, Mr. Charles the Leo Atkinson, and family in the loss of his wife, Lulu.

Ideas To Help Cut Calories

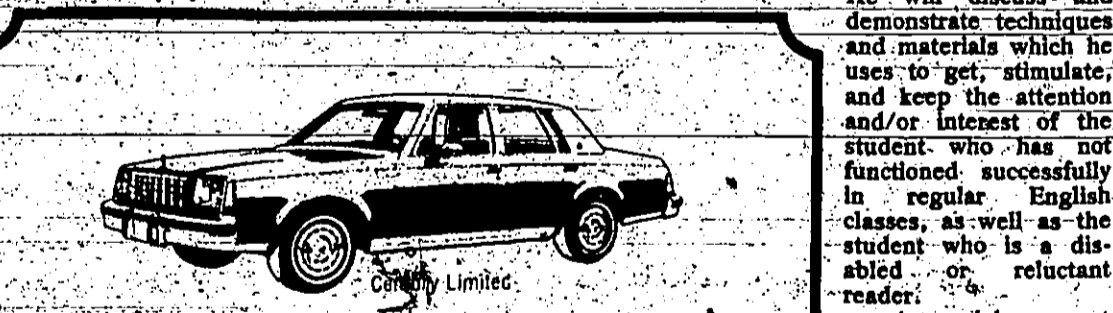
COLLEGE STATION — Wastewatchers remember—food by any name is still food, and it adds up to too many calories even if no one sees you eat them, points out Mrs. K. Sweeten. Mrs. Sweeten is with the Texas Agricultural Extension Service. The Texas A&M University System. Wastewatchers have two alternatives: Avoid snacks altogether, or plan snacks as part of the total allotted calories for that day. This way you will not feel cheated if you see others nibbling. It doesn't matter how many or how few calories are in a serving of food, a smaller serving will have fewer calories, the specialist says.

WE FINANCE AGRICULTURE

Timber Equipment (Logging & Sawmill) Land Purchases (minimum \$10,000) Cattle Operations • Poultry Operations Pickups & Autos EAST TEXAS PRODUCTION CREDIT ASSOCIATION 900 N. Wheeler St. Jasper, Texas Telephone: 384-5721

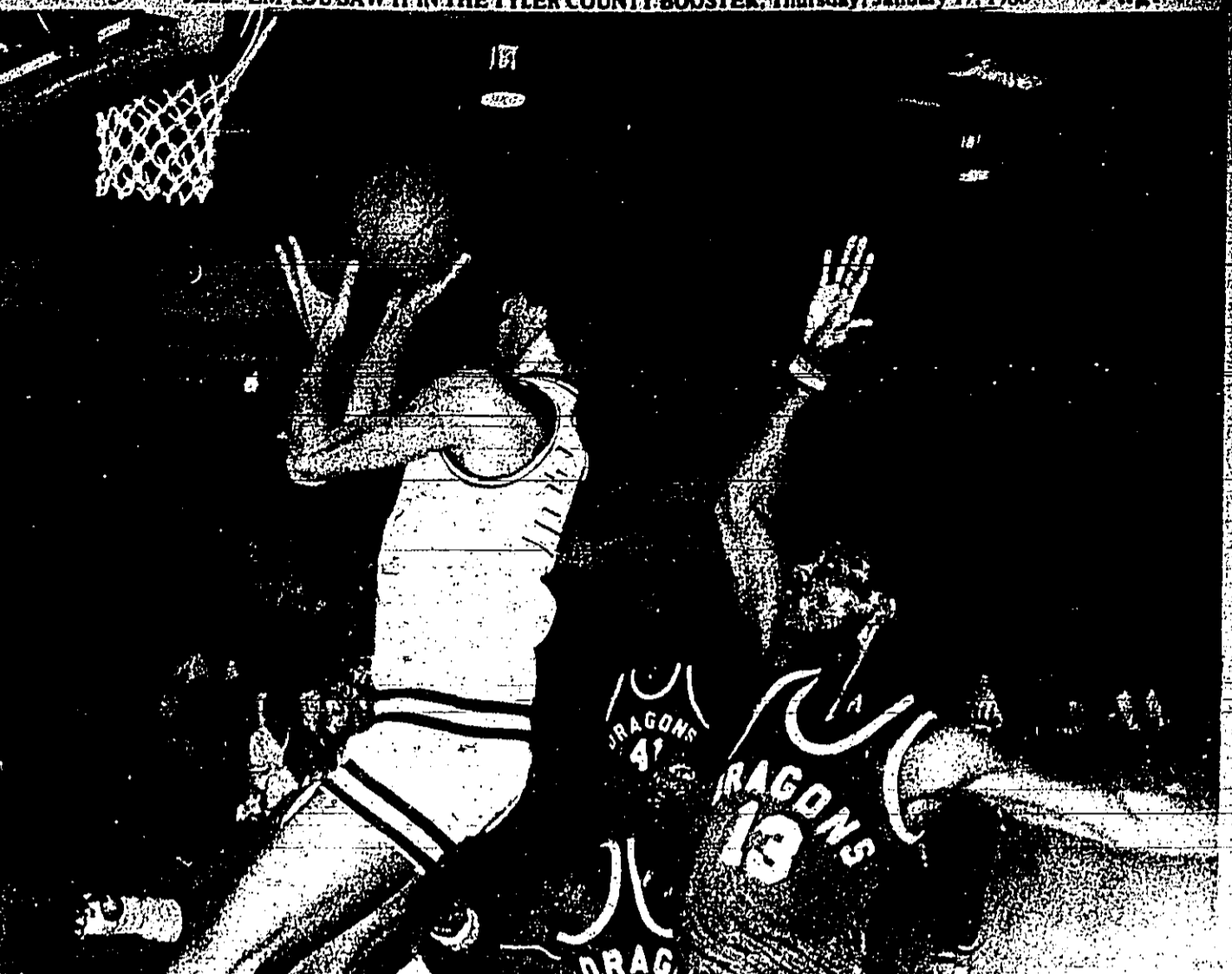
WOODY WOODROME To Give Workshops

Woody Woodrome, Nederland High School teacher of basic/elementary English and reading had been invited by the Texas Joint Council of Teachers of English to give two workshop presentations during the state convention at the Hyatt Regency Hotel in Houston on February 2. "It Ain't Fun, But It's Necessary" is the title of his presentation. He will discuss and demonstrate techniques and materials which he uses to get, stimulate, and keep the attention and/or interest of the student who has not functioned successfully in regular English classes, as well as the student who is a disabled or reluctant reader. A special segment of the presentation will deal with the teaching of English and reading to foreign students who are attending school here in the United States. Woody is the son of Mr. and Mrs. Dave Woodrome of the Hopewell community, east of Woodville. His mother, the former Daisy Rawls, is deceased. Woody attended his first seven years of school in what is now the Hopewell Congregational Methodist Church building. At the eighth grade level, he began traveling to Kirby High School in Woodville, where he completed all his high school education. He received his B.A. and M. Ed. Degrees from Stephen F. Austin University in Nacogdoches.



1980 CENTURY LIMITED A TOUCH OF CLASS STARTING AT \$6132.33 EPA MPG Estimate: 27 m p g 488 est: hiway range

DAN RAWLS CHEVROLET-BUICK, INC. HWY 96 S. 423-2273 KIRBYVILLE



WOODVILLE SCORER—Jimmy Jackson hits the Kirbysville Wildcats. Jackson hit 15 hoop for 2 points during Tuesday night's game points to help the Eagles to a 53-51 victory.

MHMR Network Now Complete

The 13-county network of Deep the 13 counties has established to promote health care in East Texas. The network is a part of local dollars. We are pleased to have the opportunity to extend our services into this region. The network is a part of local dollars. We are pleased to have the opportunity to extend our services into this region. The network is a part of local dollars. We are pleased to have the opportunity to extend our services into this region.

SAVE Where Your Money REALLY ADDS UP

As Of July 1 All Passbook Accounts Increased To 5 1/2%

SOUTHEAST TEXAS SAVINGS and Loan Association P.O. Box 936 Woodville, Texas

Branches Now Open At Livingston 501 W. Church Kountze Hwy. 69 S. 283-3747

Pryor Contest Judge

Mrs. Harold Pryor has returned from Biloxi, Mississippi where she was one of the judges for the Mississippi U.S.A. Pageant... U.S.A. Miss Universe pageant which will be held in Biloxi on May 15 of this year.

Hillister Happenings

by Mrs. W.G. Haynes

Sidney and Linda Holt with Shell of Mr. and Mrs. Glyn Ester of Nedy... Mrs. Myrtle Ester this week.

Pecan Meeting Monday

The Agricultural Committee and Young Farmers Organization will sponsor a Pecan Production Meeting... Monday, January 21, at 7 p.m.

Ramblin' Round Rockland

by Aloha Freeland

Beaumont. Our prayers are with her for her recovery... We are glad to hear that Jess Widner, hospitalized recently, is better at the time of this writing.

Rockland Revival Center reports good services and fellowship on Thursday evening, January 10, when Rev. T. Riley of Colmesneil was the guest speaker.

Congratulations and best wishes are also in order for Miss Maria Brown who became Mrs. Jimmy Nighburger on January 1st.

FIX-IT-UP Home Improvement SPECIALS

BUY NOW AND SAVE! EFFICIENT AND ECONOMICAL CAST IRON WOOD BOX HEATER Reg. \$99.95 NOW \$99.95

WOOD GRATES NOW AT \$21.95

WATER FILTER SYSTEMS Highly-efficient, spirally wound cartridge filters water at every tap, not just one outlet. \$39.95

WALLBOARD B GRADE MASONITE ENAMEL 4x8 SHEET \$6.95

BLP MOBILE PAINTS THE FINEST PVA LATEX WALL FINISH COST LESS COVERS BETTER MOBILE'S INTERIOR LATEX-WALL FINISH \$7.15

TRUCKLOAD SALE-PVC PIPE 20 FT. JOINTS ONLY 1/2"10¢ 1 1/4"20¢ 3/4"12¢ 1 1/2"27¢ 1"15¢ 2"38¢

WESLO In Our Stop Home Building Supermarket 1001 N. W. 35th Ave. Ft. Lauderdale, Fla. 33309

Haynes enjoyed Sunday evening in Woodville visiting the G.T. Standley... Mr. and Mrs. Clinton Collier were in Dibol Sunday visiting their grandson Billy Dean and family.

Attention, anyone with news! My correspondent in Rockland has expressed the fear that he is missing some of the important Rockland news because he possibly doesn't have your name on his list of contacts for the week.

Althea Holt, Velma Sumrall and Aurelia Haynes were in Kountze Wednesday evening to see Will and Beadie Holt.

Mr. and Mrs. Will Holt in Kountze Friday. Sunday visitors in the Gene and Lois Going home were Larry and Brenda Martin with Scott and Kevin of Vidor.

Althea Holt, Velma Sumrall and Aurelia Haynes were in Kountze Wednesday evening to see Will and Beadie Holt.

Mr. and Mrs. Bessie Huggins, Mrs. Dona Norton and Mrs. Aurelia Humble spent last week with Martha's parents Mr. and Mrs. Clinton Collier.

Mr. and Mrs. J.W. DeRamus visited their daughter, Mariann Gardner and family in Livingston Saturday evening.

Mr. and Mrs. J.W. DeRamus visited their daughter, Mariann Gardner and family in Livingston Saturday evening.

Mr. and Mrs. J.W. DeRamus visited their daughter, Mariann Gardner and family in Livingston Saturday evening.

Mr. and Mrs. J.W. DeRamus visited their daughter, Mariann Gardner and family in Livingston Saturday evening.

Mr. and Mrs. J.W. DeRamus visited their daughter, Mariann Gardner and family in Livingston Saturday evening.

Mr. and Mrs. J.W. DeRamus visited their daughter, Mariann Gardner and family in Livingston Saturday evening.

Mr. and Mrs. J.W. DeRamus visited their daughter, Mariann Gardner and family in Livingston Saturday evening.

We'd like you to meet Jeff Ratcliff He's our newest representative with offices at Woodville Inn 283-3724

Farmers Insurance Group AUTO LIFE FIRE HOME TRUCK COMMERCIAL

Dr. Gary Tatum Optometrist Hours: MON.-FRI. 9:00-12:00 1:00-5:00 p.m. 283-3011

Dr. H. Herrington Chiropractor Hours: MON.-FRI. 9:00-12:00 1:00-5:00 p.m. 283-7312

BY APPOINTMENT PLEASE 409 S. MAGNOLIA

WANTED SILVER AND GOLD COINS We Will Pay You Instant Cash For Scrap Gold or Silver. TOP PRICES PAID TWO DAYS ONLY Friday, Jan. 18 10:00 a.m. til 8:00 p.m. Saturday, Jan. 19 10:00 a.m. til 8:00 p.m. Willis Motel 423 So. Magnolia Room 18 Woodville

WAL-MART Now in our Garden Center! Home Decor Sale Save 3.00 Wood Table Lamps \$12.88 Save 3.00 Glass Table Lamps \$16.97 Hurry! Sale Ends Saturday Save 10.00 Storage Cabinets \$39.96 Save 2.02 Corduroy Rocker Set \$9.94 Save 1.02 "Personality Yours" Bed Pillows \$2.94 Save 3.00 Wicker Hamper \$12.96 Save 23% Corduroy Chair Pads \$2.96 Super Value Assorted Blankets \$2.97 Save Up To 1/2 When You Install Your Own Carpet Rolled Carpet \$99.96 Save 20.00 on 9'x12' 59.88 Save 8.00 on 6'x9' 29.88 Save 2.22 Sculptured Framed Pictures \$6.66 Save 6.00 Solid Wood "Wicker Cane" Mirror \$19.88 Full Length Door Mirrors \$5.44 Save 4.94 Decorative Fashion Wood Frame Mirrors \$15.94 Save 17% 3'x6' All-Purpose Vinyl Mats \$2.44 Save 3.00 Wicker Hamper \$12.96 Save 2.02 Corduroy Rocker Set \$9.94 Save 1.02 "Personality Yours" Bed Pillows \$2.94 Save 3.00 Wicker Hamper \$12.96 Save 23% Corduroy Chair Pads \$2.96 Super Value Assorted Blankets \$2.97 Save Up To 1.03 Assorted Pictures \$1.94 Save 1.00 Assorted Pictures \$1.94

'Sundown' Gives Season Dates

The tranquil setting of the Alabama-Coushatta Indian Village in East Texas will once again be threatened throughout the summer by the marauding Mexican Army of Captain Montecinos. This scene springs from Beyond the Sundown outdoor drama at the Alabama-Coushatta Indian Reservation near Livingston which was assured of another season with the announcement of a \$75,000 grant from the Moody Foundation of Galveston to produce the historical outdoor drama of the Tribes.

The 1980 season will begin a 56-performance schedule on June 20 in the 1,600 seat Sundown Theatre presented on nights except Sundays. The natural setting of the Big Thicket of East Texas is the dramatic backdrop for America's foremost outdoor drama which was commissioned by the Alabama-Coushatta Indians to write the play. A haunting underworld scene depicting the Big Thicket creates the Hunter's intrigue of the forest. The drama portrays a period in the history of the Alabama-Coushatta Indians considered an important era which led to the final settlement of the Tribes in East Texas in the mid 1800. A cast of 60 actors, dancers and technicians present the two-hour drama complete with combat scenes, dancing, creative lighting and pyrotechnics.

The philanthropic support of the Moody Foundation enables the story of the Alabama-Coushatta Indians to be presented in this highly entertaining and skillful production suitable for entire families. Auditions for parts in the drama begins in early February for more information call 713/563-4394.

Tyler County Day Feb. 23

Jim Clark, Tyler County ambassador to the Houston Livestock Show and Rodeo, has announced that Tyler County Day at the show will be Saturday, February 23, at the 2 p.m. performance. At that time Tyler County will have a Pony Express relay team riding in competition with a team from either Austin, Jasper, Jefferson or San Augustine County. It is both a timed and penalty event and the two teams with the best winning times during the entire run of the show through March 2, will complete for the title on Sunday night.

Applications have been received for the \$1,500 scholarship awarded to each participating county each year and the winner and alternate will be announced shortly after February 1.

Clark further stated that the main purpose of participation by the county in the Houston Livestock Show and Rodeo is to be eligible for one of the eight school seniors to receive a \$1,500 scholarship to pursue an agricultural college career. The alternate is chosen so that in the event the scholarship winner time-recording and receives one of the

PLAY INSTANT BINGO #2 AT... Brookshire Bros. THE BEST FOR LESS

Check The Low Prices on These "People Pleasing" Specials at Brookshire Bros.

BANANAS
GOLDEN RIPE **4 LBS. \$1.00**

YELLOW ONIONS LB. 15¢ **GREEN CABBAGE LB. 15¢**

RUSSET POTATOES 8 LB. BAG \$1.09 **YAMS 3 LBS. \$1.00** **CAULIFLOWER 89¢** **GREEN ONIONS 2 BUNCHES 29¢**

CARROTS 49¢ **GRAPE-FRUIT 8 \$1.00** **APPLES 3 LBS. \$1.00** **ORANGES 39¢**

BROOKSHIRE GRADE-A LARGE EGGS 69¢ **HY-TOP ICE CREAM 1/2 GAL. ROUND CARTON ASSTD. FLAVORS 49¢** **DEL MONTE SWEET PEAS 303 CANS 31¢**

PORK ROAST 69¢ **DUTCH OVEN STEAKS 1.99**

USDA CHOICE HEAVY BEEF BONELESS LB. \$1.99

HEAVY BEEF BULK PACK SALE:
USDA CHOICE HEAVY BEEF SIRLOIN STRIPS **\$3.69** **CHUCK ROLLS LB. \$1.99**
USDA CHOICE HEAVY BEEF TOP SIRLOIN BUTTS **\$2.69** **RIB EYE ROLLS LB. \$3.99**

BACON \$1.38 **SPARE RIBS \$1.19** **SAUSAGE \$1.19** **HAMBURGER PATTIES \$3.89**

DEL MONTE GOLDEN CREAM OF W.K. CORN 303 CANS 31¢ **DEL MONTE GREEN BEANS 303 CANS 31¢** **DEL MONTE CATSUP QUART BOTTLE 89¢**

Sinutab SINUTABS PKG. 30 \$2.59 **KRAFT SANDWICH SPREAD \$1.15** **WINE-LIVES GOURMET VALLI CAT FOOD 2.8 LBS. 65¢** **PHILIPPIAN HEAVY TO SPREAD ALL FLAVORS 18oz. CAN \$1.19**

MAXWELL HOUSE INSTANT COFFEE 10oz. JAR \$4.99 **DEL MONTE SAUERKRAUT 3oz. \$1.69** **DEL MONTE SLICED OR HALVES PEACHES NO. 2 24 CAN 69¢**

Deseret Elegant Flatware ONLY 99¢ **LIQUID DETERGENT IVORY 77oz. RTU 89¢** **BISCUITS 8 \$1.00** **POWDERED DETERGENT BOLD 49oz. BOX \$1.59**

HY-TOP FRESH BUTTER-MILK 89¢ **TISSUE 99¢** **HY-TOP FRESH BUTTER-MILK 89¢**

DOUBLE TUESDAY **Brookshire Bros. THE BEST FOR LESS**

EXTRA STAMPS **Brookshire Bros. THE BEST FOR LESS**

Natural LIVING COLOR 8"x10" Portrait ONLY 99¢
No Age Limit Plus 50¢ Handling Limit 1 Per Family Scenic Backgrounds Groups Also Taken
Brookshire Bros.
Thurs., Fri., Sat. Jan. 17, 18, 19
10:00 a.m. - 6:00 p.m.

This Week's Feature: **WASH SLIPPER DINNER FORK PER UNIT 35¢**
This week's featured completer item: **2-PIECE SALAD SET ONLY \$1.89**

START PLAYING TODAY **2 Games to Play** **2 Ways to Win**

Game	Ways to Win
Game 1	2 Ways to Win
Game 2	2 Ways to Win

TOPICS TIPS TECHNIQUES

Soil Tests Are Valuable

By CLINTON CURRIE, County Extension Agent

doing his work uses procedures suitable for his soils. In addition to reliable testing procedures, the soil sample sent to the laboratory must be carefully collected and tests can be a valuable source of information and a profitable investment.

First, divide fields into uniform sampling units. Each unit should be uniform with respect to color and texture of available nutrients in a soil as well as past cropping, fertilization and liming practices. If samples represent large acreages, jagged, will soil test report also show only general information. As fertilization becomes a regular practice, more attention must be given to obtaining specific information for each field or sub-division and developing fertilization practices.

The second point of emphasis regarding sampling is the number of spots at which soil is obtained. Collect soil from at least 10 to 15 spots in each field. Soil requirements for getting nutrient content vary considerably in though they look uniform. Take a slice or core from the plowlayer at each location, put in a clean bucket, mix thoroughly and send about a pint to the laboratory.

There are many procedures for testing soils and obtaining numerical values, such as pounds per acre or parts per million. However, unless crop removal and response data are collected to establish whether or not the soil is medium or high in nutrients, Extension Service service people of all ages results are essentially meaningless. Therefore, a producer should make sure that the laboratory origin.

Soil Tests Are Valuable

Soil tests are valuable for determining nutrient levels and soil pH. They help farmers make better decisions about fertilization and liming. Regular soil testing can prevent nutrient deficiencies and improve crop yields. It's a simple, cost-effective way to optimize soil health and productivity.

Paul Urges 'Gold' Dollar

Congressman Ron Paul of Texas has called for a dollar redeemable in gold as the only cure for the financial panic now afflicting the West.

"The chaos in the gold and silver markets is no surprise," said Congressman Paul. "It is the result, predicted by free market economists, of decades of deliberate inflation by the U.S. Congress.

"The politicians thought they could go on forever, printing up mountains of paper money to pay for Federal deficits and 'stimulation' of the economy. But now, because of this deliberate destruction of the dollar for political advantage, the monetary chickens have come home to roost.

"The zooming price of gold (which indicates the rapidly sinking value of our dollar) is not caused by the Soviet invasion of Afghanistan. Only the naive were shocked by this brutal display of Soviet imperialism. Gold and other precious metals are skyrocketing because of the unlimited printing of paper dollars. The poli-

icians have been able to get away with this practice—called counterfeiting in the private sector—because all ties between the dollar and gold were severed. A gold-backed currency makes the politicians exercise restraint, so naturally they resent it.

"We can stop inflation, and its gold-panic offspring, by putting the dollar on a sound basis. Last year I introduced H.R. 5658, the Sound Money Act, which would make the dollar redeemable in gold, and take its value out of the hands of the politicians.

"Under our Constitution, the Founding Fathers intended to have only gold and silver as money. They knew, after a bad experience with inflation during the War for Independence, that a dollar backed by paper is worth only that.

"But, over the past 67 years, the politicians have used inflation to benefit themselves and favored special interests. To keep the inflation going, they made the dollar non-redeemable in gold for Ameri-

cans, and then internationally. Then they removed silver from our coins, substituting base metals. Finally, there was no limit to the expansion of money and credit, which is inflation, and we are seeing the inevitable results in the gold and silver markets of the world.

"Sometimes, in the past, drastic depreciation of the dollar through paper money has been associated with the coming of war. During wars, there is always massive inflation as well.

"Now we are hearing rumors of possible U.S. involvement in a Near Eastern war.

"We should definitely take action as the result of Soviet aggression. We should withdraw the SALT treaty, and build the defensive weapons we need to protect America. We should halt the incredibly shortsighted subsidies to U.S. companies that sell the technological means to make war. And we should reduce our embassy in Moscow to the minimum, and make

the Russians do the same here.

"But under no circumstances should we go to war in the Near East. War would mean more inflation, government control, poverty, and—worst of all—great loss of American life. It is horribly wrong to ask our young people to die in another no-win land war in Afghanistan, Pakistan, or any other country in the area. Morally, we can only ask the ultimate sacrifice for the defense of the United States.

"Some people justify military intervention in the region because of our oil supply. With a free market in energy in the United States—an end to Federal regulations and price and allocation controls—we

would produce so much oil and natural gas domestically that we could thumb our nose at OPEC. Whatever imports we needed could come from Mexico and Canada.

"A gold standard and a free market would bring domestic prosperity and a permanent end to inflation," added Congressman Paul. "And they would even help keep us out of no-win foreign wars."

The U.S. Department of Labor's Office of Federal Contract Compliance Programs (OFCCP) was created to assure equal employment opportunity in federal contract and subcontract work.

COUNTRY CLUB CORNER

BY DON COLE

DIFFERENT STROKES—Golf course and country clubs differ widely in their operations, physical layouts and facilities. Such is the case in southeast Texas, which gives our golfers and other country club participants a wide choice to enjoy the good life.

Private clubs usually offer the best facilities and are financially sustained by paying memberships. Initiation fees (to join) range from several hundred dollars to several thousand dollars. Monthly or annual dues ranging from about twenty five dollars to over a hundred dollars a month are charged each membership depending on facilities and type of membership.

Municipal courses are open to anyone and are usually found in the larger cities and towns.

They are built and operated with city tax money and their own income. Municipal courses tend to be low cost and heavily played which causes heavy wear on the course.

Pick the course and the club that suits you and your family and enjoy life with your own membership...and the club will appreciate your support.

WINTER'S OVER—Well, another year, another decade, another holiday season is over. Spring is in the air (or at least the last of a mild winter), the pro golf tour is underway and optimistic plans are everywhere for a good year and a good decade. In the face of world crisis and national Economic worries, the average American is tired of crisis and nagging economic worries. He is ready to improve the quality and enjoyment of his own life and that of his family.

On the lighter side, our vacations are over and we all need to take a little time everyday and every week to enjoy our favorite sport or pastime.

From "Rules is Rules"

Rule #5-In or near a bunker or sand trap, a ball rolling back toward the player may be hit again on the roll toward counting an extra stroke or strokes. In any case, no more than two strokes are to be counted in playing from a bunker, since it is reasonable to assume that if the player had time to concentrate on his shot, instead of hurrying it so as not to delay his playing partners, he would be out in two.

MEETINGS & EVENTS—Several business meetings are scheduled for January and a surprise birthday party for next Saturday. If you are ready for a golf tournament or a disco dance party or some other country club event, then let us know and we will try to schedule it.

SPORTS TIP OF THE WEEK—(health) when one gives up sports or exercise, the muscles and the body begin to deteriorate. If you are no longer involved in any sports or exercise, then check with your doctor on which sports or exercises are best for you and get going...get healthy.

Weekly Agri Report

Many East Texas Agricultural Extension cattlemen are currently selecting bulls for their next calf crop. According to Dr. Randall Grooms, area livestock specialist for the Texas

Service, the selection of these bulls may be the most important decision made during the year. Grooms says that the number one factor in selecting bulls is fertility. All bulls should be fertility tested before being placed with the cow herd to help assure a high percent calf crop. Fertility and growth rate are the two most important items to consider. Calves will be no better than their sire. Bull selection will genetically design the next calf crop and will greatly determine the income from those calves.

Cows must be bred to a bull from which they can calve without problems. Proper bull selection can eliminate high birth weights and thus much of the calving problem experienced by many cattlemen. Grooms suggests selecting a big, strong, fast growing bull which produces calves in his own image. Bulls that grow faster than their contemporaries sire calves that grow faster.

Regardless of whether producers follow a fall calving program or a spring calving program, they must produce quality calves that grow and develop rapidly. The bull selected can mean the difference between profit or loss.

Jan Mills
THE NATION'S STUDIO

8x10 Natural Color Portrait - \$1.50

Your choice of Family Group or Individual. One special offer per family, one per person.

Woodville Inn
Thursday, Jan 24
1:00 p.m. - 9:00 p.m.

SONIC
PRESENTS
BATTLE OF THE BURGER

1/2 price SALE
All hamburgers
Prices Good Sunday, Jan. 20th through Thurs. Jan. 24.

SONIC
Good Times RESTAURANTS

All Kinds of Food
Fresh Made to Please You!

The beautiful way to save energy.

Hunter's Olde Tyme Ceiling Fans
(Installation available)

SHY-BEE ELECTRIC
Lighting Fixtures
363 W. Houston Jasper, TX (713) 384-8718

COME IN AND REGISTER FOR \$100 WORTH OF FREE GROCERIES, DRAWING HELD EVERY MONTH NO OBLIGATION!

CONGRATULATIONS TO MRS. McMILLAN, DECEMBER WINNER OF SAVON'S GROCERY GIVEAWAY. IT PAYS TO SHOP AT SAVON.

CLAIROL NICE 'N EASY HAIR COLOR
\$2.19
3.83 VALUE FOR

ANIMAL KITES
99¢ VALUE FOR
69¢

ALL JEWELRY 1/2 PRICE

PRO STYLE 1350 WATT HAIR DRYER
19.95 VALUE
FOR **\$8.88**

MYLANTA ANTACID
1.49

DUNCAN FOOT LONG RACING CARS
2.99 VALUE FOR
\$1.49

LARGE SELECTION OF REGENCY SHELL COMBS
ALL 1/2 PRICE

VIDAL SASSON SHAMPOO
3.22 VALUE FOR
\$1.99

SUNTRON CURLING IRON
19.95 VALUE FOR
\$4.99

HUKA KAI CANDY BARS
20¢ VALUE FOR
12 FOR 1.00

BRILLIANT LUSTRE FINISH Color Reprints
FROM COLOR NEGATIVES ONLY
From Kodak, Focal, Fuji, GAF and Fotomat films

16¢ PER PICTURE

SAVON DRUGS
106 S. Charlton 283-2163 Woodville, Texas
"OUR NAME IS OUR MOTTO"