



THE TYLER COUNTY BOOSTER

Hoag & Sons Book Bindery Inc.
Springport, Michigan 49284

Serving Tyler County
Since 1930
2 Sections 20 Pages

Thursday, Nov. 27, 1980
Woodville, Texas, 75975
VOL. 54 No. 48 '20'

City Gets \$187,000 For Housing

Woodville has recently received \$187,500 additional funding for Housing Rehabilitation which is being funded by the Department of Housing and Urban Development, providing money for general home improvements, according to Walt Davis, Woodville City Manager.

The Housing Rehabilitation Program is an effort on the part of the City to promote safe, decent and sanitary housing by rehabilitating existing homes. The program is designed for low to moderate income families who own a repairable house.

The City will contract directly with local and area independent wholesale builders to carry out the improvements. Most of the work will encompass repairing or replacing damaged

portions of the existing house. Examples of work to be done will be repairing leaking roofs, insulating attics, repairing and/or replacing siding, flooring, and windows, and inspecting and repairing existing plumbing and electrical systems.

The firm of Semetko & Waxman, Inc. has been hired by the City to implement the Housing Rehabilitation Program. A representative of the firm, Peggy Muckelroy, will take applications from interested homeowners December 9th and 10th at City Hall from 9:30 a.m. to 12 noon and 1 p.m. to 3:30 p.m.

It is necessary that interested homeowners wishing to place an application bring Social Security numbers, Veterans Administration numbers, Welfare numbers, in order to verify

family income to determine eligibility, and a copy of your deed or other proof of ownership (tax receipt).

The applicant must agree to live in the house at least five (5) years after improvements have been made. If the house is sold, the homeowner will be required to repay the City a portion of

the grant (20% per year remaining).

Additional information regarding Woodville's Housing Rehabilitation Program may be obtained by calling Mrs. Muckelroy at Semetko & Waxman, Inc., Jasper, Texas at 713 / 384-2503.

Chamber Sets Holiday Plans, Elects Officers

The Tyler County Chamber of Commerce met in regular session Monday night, electing a new president for the coming year and making final arrangements for the upcoming

Chamber Banquet which will be held January 23.

Featured speaker for the Banquet will be Leonel J. Castillo, the Commissioner of the Immigration and Naturalization Service of the United States.

Castillo has held positions as the Controller for the City of Houston, which was an elected position, in which he supervised the fiscal affairs for the City which during his administration obtained a AAA credit rating, and managed an annual budget of



DECORATIONS GO UP—Gulf States Utilities workmen assist the City of Woodville each year by installing the Christmas Decorations along our thoroughfares. Shoppers should be alerted to the Chamber of Commerce Christmas Shopping Spree currently underway in which persons may register at many Woodville merchants for two prizes of \$150 and \$100 each.

Homes Tour Set Saturday

Residents of Tyler County will have the opportunity to visit two of the area's most interesting residences this Saturday, December 6, from 11 a.m. until 3 p.m. The Heritage Civic Club and Women's Reading Club will sponsor the annual Christmas Tour of Homes to benefit scholarships to local high school students.

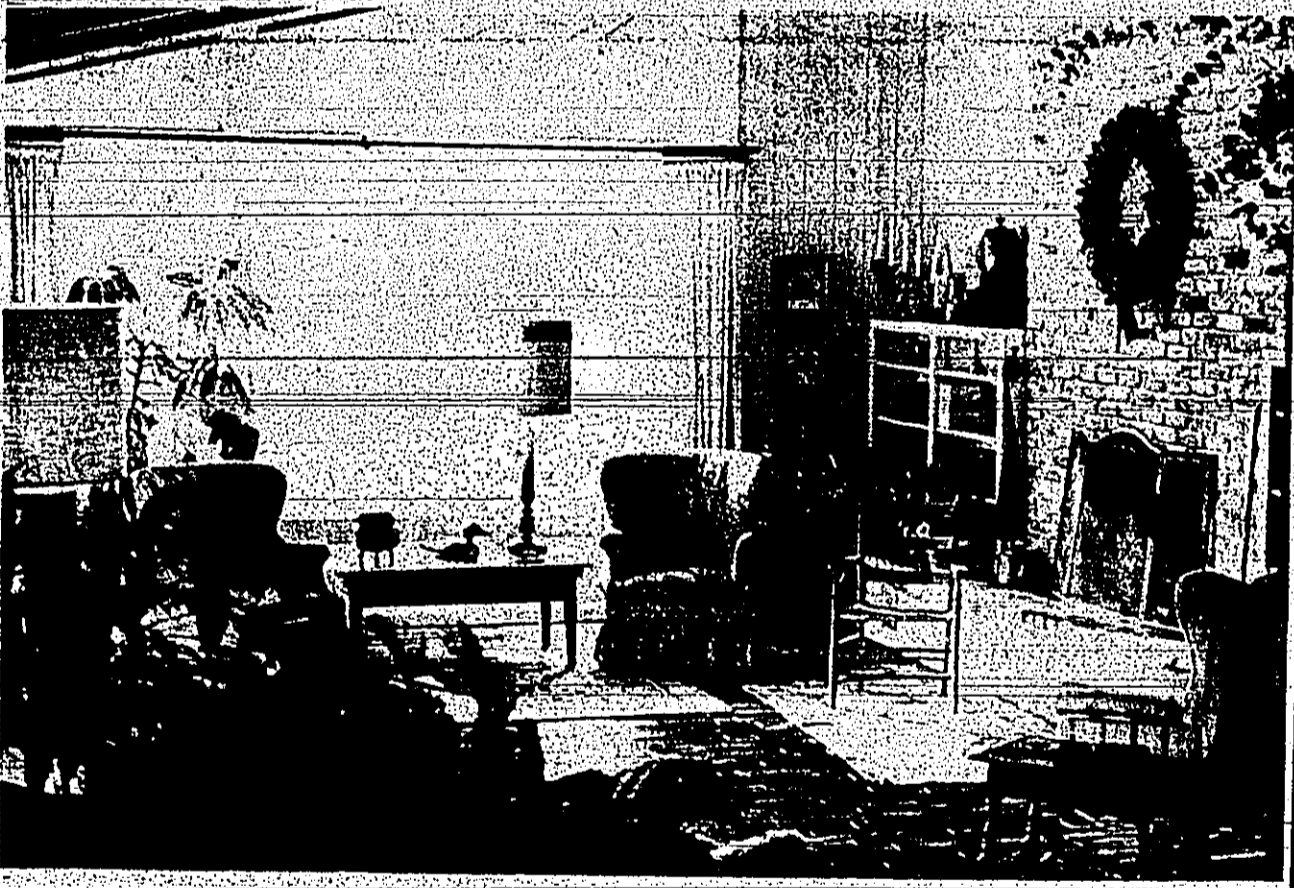
Featured on the tour will be the homes of Mr. and Mrs. George Tubb at 610 West Bluff and Mr. and Mrs. Morris Clemmons, Jr. on the Old Harmony Road. Although both homes

are of contemporary design, each is unique. The Tubb home reflects a cosmopolitan lifestyle while the Clemmons home features primitive antiques. Both homes will have an array of delicious refreshments with appetizers and dips served at the Tubb residence and Christmas sweets served at the Clemmons residence.

Baked goods and handcrafted items will be sold at both homes. Featured will be tree ornaments, macrame Christmas designs, ceramic

snowmen, kitchen items, patchwork gifts, baby accessories, hand puppets, and a variety of other holiday decorations.

Tickets are \$2 per person for touring both homes and are available at the homes on Saturday or in advance from members of the Heritage Civic Club and Women's Reading Club. Signs will guide visitors to both locations. More information concerning the tour may be obtained from Barbara Cole at 283-3022 or from Kaaren Sullivan at 283-5068.



MORRIS CLEMMONS HOME—Located at the end of a beautiful winding country road you'll find this enchanting residence privately nestled amongst the changing leaves of the season.



GEORGE TUBB RESIDENCE—Prominently situated on Woodville's main street this landmark home adds to the charm of small town living.



Leonel J. Castillo

more than \$300 million.

Elected to serve as President for the coming year is Mike Burrow, of The Woodsman. Robert Allison, owner of Allison Chevrolet in Colmesneil, will serve as Vice President and Chamber Secretary Treasurer will be Joan Loidice.

In other business at the meeting the Chamber voted to change the regular meeting night from Monday to the first Thursday beginning with the February 1981 meeting.

Woodville Retail Merchants Committee Chairman Eunice Bohannon reported that the Christmas Shopping Spree had many representatives from throughout the Woodville Community and that two gift certificates will be available for prizes, one totaling \$100 and one totaling \$150.

"We still have more merchants to enlist in the drawing but it seems to be going along fine."

According to the Chamber office, the drawing activity begins this week.

Action on a new dues schedule which was presented was deferred until a later meeting and until the dues schedule could be properly publicized.

The monthly Beautification Award was voted on to be presented to Frank's Conoco, located on South Magnolia in Woodville.

Candidates for the Outstanding Citizen Award were reviewed and a selection of candidate was accomplished by secret ballot. The name of that candidate will not be revealed until the Chamber Banquet Jan. 23.

The Banquet tickets will go on sale Jan. 1 and will cost \$9.50 apiece. It will be held at the Woodville Inn and will begin at 7:30 p.m.

International Dinner Set

A Woodville High School International Dinner will be held in the Woodville High School lunchroom on Friday, December 12 as part of a function of Mildred White's World History Class.

The dinner, which will be prepared by students in the class, will feature their own choice of foreign recipes.

Each person will be challenged with the opportunity of using chopsticks during the course of the dinner, said Mrs. White.

Woodville Independent School Board Trustees have been invited to the event along with School Principal Bennett Haanna and his wife.

The after-dinner speaker for the meal will be Bob Davidson of Texas A&M University at College Station.

Harrison Named Manager

A new store manager has been assigned to the Wal-Mart Store here. Greg Harrison, who has previously served with the Wal-Mart organization at its Waxahachie Store.

Harrison will reside in Woodville with his wife Marsha and their three children: Jessica, Amber and Alicia.



Greg Harrison

Child Abuse Board Sponsors Dinner

There will be an Italian Spaghetti Dinner to be held on Thursday, December 4 at the Woodville United Methodist Church Youth Center and sponsored by the Region 10 Child Welfare and Child Abuse Board, Tyler County Branch. The Center is located at the corner of Pavilion and Nellis Streets in Woodville.

The meal will be served from 4:30 p.m. till 7:30 p.m. Tickets may be obtained from the County Treasurer's office, the Department of Human Resources office, C.A. Williams' Cafe and at The Tyler County Booster.

14 Injured In Accidents

Sergeant Russell Davis of the Texas Highway Patrol announced today that during the month of October 1980, in Tyler County there were no Rural Fatal Accidents.

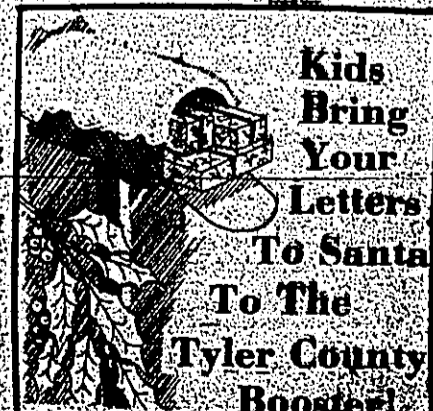
In addition, the Texas Highway Patrol investigated 20 Rural Motor Vehicle Accidents in which 14 persons were injured.

Through October of this year, there have been 150 rural accidents in Tyler County, killing 3 persons and injuring 98 people.

During the same 10 month period in 1979, there were 154 Rural

Traffic Accidents killing 6 and injuring 65 persons.

During the month of October in the 16 counties comprising District 2B, the Texas Highway Patrol investigated 464 Rural Accidents, killing 15 persons and injuring 179 people.



Kids Bring Your Letters To Santa To The Tyler County Booster!

"I disapprove of what you say but I will defend to the death your right to say it." --Voltaire

Yours, Theirs, Ours

State Capital Highlights

AUSTIN—Every ten years the Texas Legislature divides the state into legislative and congressional districts, and redraws the political map. The process is called redistricting, and though it only occurs once a decade, it is one of the most important duties of the Legislature.

What is the function of redistricting? The law requires that legislative and congressional districts must be as equal in population as practicable. At the end of each decade, population shifts in Texas counties have thrown the districts out of balance. Population-wise, simply stated, some districts grow to have more people than other districts. Redistricting is a tune-up, an attempt to start over by making every district equal again for another ten years.

TWO NEW SEATS
The Texas Constitution requires that the state redistrict after each decennial U.S. census. Because of the state's rapid population growth, Texas is likely to receive two new seats in the U.S. House of Representatives in 1981, bringing the Texas delegation's voting strength to 26.

The number of seats in the Texas Legislature will by law remain unchanged: 150 in the House of Representatives and 31 in the Senate.

While the courts keep a close watch on the redistricting process to keep minority parties and ethnic groups from being deprived of fair representation, the Legislature is a political free-for-all in many respects. In general, the most powerful group in the Legislature (whichever its characteristics may be) will try to influence redistricting in order to dilute its opposition.

For example, if the majority group wants to get rid of an urban legislator who has given them stout resistance, they may draw him into a district in which he will face mostly rural voters. Hoping he cannot adjust and will be defeated, there are many variations on that theme.

HOW IT WORKS
The redistricting plan is drawn up and passed like any other bill. The bulk of the work is done in committee and then sent to the floor for a vote. Traditionally, the House and Senate draw plans for themselves. Once one chamber has approved a redistricting plan for itself, the other chamber usually approves it without amendment.

The congressional redistricting bill, however, is quite likely to be debated by both houses. The final plan approved by the Legislature is sent to the Governor for his signature or veto.

REDISTRICTING BOARD
If the Legislature fails to adopt a plan, or if a plan is vetoed by the Governor, then the responsibility for drawing a plan passes to the Legislative Redistricting Board. The board is composed of the Lt. Governor, the Speaker of the House, the Attorney General, the Land Commissioner and the Comptroller. The board must meet within 90 days after the session and finish its work within 60 days. It has no authority over congressional redistricting.

The 1980 census is expected to show that Texas has a population of 13.5 million, which would result in an ideal House district of 90,000 and an ideal Senate district of 455,000.

THE COURTS
Many factors may work to keep districts from being exactly equal, and some deviation is allowed. The U.S. Supreme Court has strict standards for population equality in congressional redistricting, but greater leeway is

allowed for state legislative districts. However, the Voting Rights Act of 1965 gives the U.S. Justice Department the power to review all changes in election laws or procedures in certain states, including Texas.

MINORITY VOTE
The Voting Rights Act prohibits any redistricting plan that deprives the minority citizen of an equal vote, and racial fairness is one of the most important criteria in developing redistricting plans. It prohibits a plan that leads to a "retrogression" of the position of minorities.

Texas has a history of courtroom battles involved in the redistricting, and the coming struggle does not promise to be any less complicated. Two new factors will add a different twist to the process. With a Republican governor, the Legislature can expect its redistricting plans to face careful scrutiny of its effects on Republicans. Second, the U.S. census data will not distinguish between aliens and citizens. Therefore, aliens will be included in the totals used to determine representation.

The Texas Supreme Court in 1971 ruled that the sitting Legislature must redistrict if the census is published at any time during the session. The results of the census are expected to be published no earlier than March, 1981.

The scramble to redistrict the state within the remaining two months of the legislative session should provide grist for the political story mills for years to come.

HOW IT WORKS
The redistricting plan is drawn up and passed like any other bill. The bulk of the work is done in committee and then sent to the floor for a vote. Traditionally, the House and Senate draw plans for themselves. Once one chamber has approved a redistricting plan for itself, the other chamber usually approves it without amendment.

The congressional redistricting bill, however, is quite likely to be debated by both houses. The final plan approved by the Legislature is sent to the Governor for his signature or veto.

REDISTRICTING BOARD
If the Legislature fails to adopt a plan, or if a plan is vetoed by the Governor, then the responsibility for drawing a plan passes to the Legislative Redistricting Board. The board is composed of the Lt. Governor, the Speaker of the House, the Attorney General, the Land Commissioner and the Comptroller. The board must meet within 90 days after the session and finish its work within 60 days. It has no authority over congressional redistricting.

The 1980 census is expected to show that Texas has a population of 13.5 million, which would result in an ideal House district of 90,000 and an ideal Senate district of 455,000.

THE COURTS
Many factors may work to keep districts from being exactly equal, and some deviation is allowed. The U.S. Supreme Court has strict standards for population equality in congressional redistricting, but greater leeway is

DAM! TEACHERS DEMANDING A DECENT WAGE? WHY DON'T THEY THINK ABOUT TEACHING INSTEAD?



CAN'T LAWYERS THINK ABOUT JUSTICE INSTEAD OF FEES? CAN'T OILMEN THINK ABOUT AFFORDABLE ENERGY INSTEAD OF PROFITS?



WHAT AM I SAYING?



DOESN'T ANYBODY DO ANYTHING FOR THE LOVE OF IT ANYMORE? CAN'T DOCTORS THINK ABOUT HEALING INSTEAD OF MONEY?



WASHING YOUR MOUTH OUT WITH SOAP? BILL, SOMETIMES I THINK YOU'VE BEEN WORKING TOO HARD...



Speaker Reports

By Bill Clayton

AUSTIN—The recently released interim report of the House Committee on Transportation cites a number of formal recommendations which will be

addressed by the 67th Legislature, which is scheduled to convene on January 13, 1981. The Committee studied a variety of transportation issues encompassing air travel, highways, railways, and mass transit along with other aspects critical to the movement of passengers and goods; both interstate and intrastate.

Department of Public Safety proposals are recommended which pay increases in order that the quality of personnel on the force be maintained in the interest of public safety. It also recommends that interstate appropriations be provided to cover the spiraling cost of fuel so that the Department of Public Safety can effectively continue to enforce the laws of our state. A rider to the appropriations bill encouraging the DPS to drive fuel-efficient vehicles whenever possible is suggested.

The Subcommittee on Trucking Deregulation elected not to make any specific recommendations to the legislature at this time, but ordered that deregulation efforts already underway in Arizona and Florida be closely monitored to assist Texas in formulating an acceptable policy on interstate trucking deregulation.

The Subcommittee on Railroad Crossing Safety was charged with the responsibility of determining which state agencies have jurisdiction in matters regarding railroad crossing safety. The subcommittee determined that no single agency has jurisdiction over railroad crossing safety and a serious lack of coordination exists in this area. The subcommittee recommends that all responsibilities for rail safety be transferred explicitly to the Department of Highways and Public Transportation so that these activities are properly regulated and coordinated.

The Subcommittee on Highway Contract Construction Funds, has handed down a recommendation designed to save the state large amounts of revenue in highway contracting. The proposal encourages the implementation of a point system for bidding procedures favoring contractors who finish projects on time and 2) a contract system that truly encourages completion of projects by deadlines.

These recommendations, if enacted into law, will affect all Texas. I urge you as a concerned citizen to write your state representative and appreciate. Mrs. Coward said, "Please send them to the Citizens Office Supply Center, P.O. Box 109, Woodville, Texas 75979."

Don't suppress your ideas and feelings. Express them in the BOOSTER. All letters to the editor must be signed. Typed or printed letters preferred. Address them to "Open Mind"

The Tyler County Booster

JOHN P. MORRISON Editor/Publisher
CHARLIE WITTER Advertising Sales
MARY JANE STOCK Production Foreman
KATHY FEWOK Typesetter/Subscriptions
JULIE CLAY Bookkeeper
MIKE & JUNE SODORIC Austin Bureau

Subscription Rates:
Tyler County \$5.50
Other Texas Counties \$6.50
Other Texas Cities & Louisiana \$7.50
Other States \$8.50
Overseas \$10.50

Published every Thursday by Tyler County Publishing Company, P.O. Box 248, Woodville, Texas 75979. Phone 283-2569.
Entered as second class matter at the Post Office in Woodville, Texas, December 11, 1930 under the act of Congress March 2, 1879. Second class postage paid at Woodville, Texas.

Tyler County Chamber Christmas Shopping Spree!

Register Now And You May Win 1st Prize \$1500.00 2nd Prize \$100.00

Drawing To Be Held December 20th

Fund Established

A special contributory fund has been set up for heart attack victim Robert E. Matkin, 33, of Woodville, who recently had a massive coronary and contractors who finish projects on time and 2) a contract system that truly encourages completion of projects by deadlines.



GOLDEN ANNIVERSARY—Mr. and Mrs. L.M. Buffalo will celebrate their fiftieth wedding anniversary Dec. 7 at the Fairview Church at Dam B from two until four p.m. Their friends are cordially invited to attend.

21 Days Till Christmas



BEAUTIFICATION AWARD—Chamber of Commerce President Tom Knapp (R.) presents the monthly Beautification Award to Mrs. Pete Harvey of Pargas for the recent construction of a new facility located on South Hwy 69. The Pargas people just awarded Bonnie McFarland, of Warren, a new Bar-B-Q Grill for participating in their recent grand opening of their new facility.



To Be Honored

MINISTER OF THE YEAR—Rev. Clyde Bennett of the First Christian Church of Woodville will be honored at the Sunday Dec. 14 service by a visit from the Area Minister of the Coastal Plains Area Christian Church (Disciples of Christ in the Southwest), Dr. Richard Crews. Rev. Bennett will be presented with a plaque which designates him as "Small Church Minister of the Year" chosen from among some 500 small churches in Texas and Mexico.

Scott Reunion Set

Ex-students, Graduates, and Faculty Members of Henry T. Scott High School will have a meeting to discuss plans for the second Scott School reunion on Thursday Dec. 11 at 7:30 p.m. in the Community Room of the Citizen State Bank. All interested ex-students and graduates are urged to attend. For more information, call 283-5404.

Scout Rally Set

The Chester School cafeteria will be the place for a Scouting Rally to be held Monday, December 8, 1980 at 7:00 p.m. Any boy from the ages of 8-10 can be a Cub Scout and any boy from 11-18 can be a Boy Scout. Scouting can be full of fun and adventure. Your parents must be there if you want to sign up. Boys and girls aged 15-21 are also encouraged to attend the meeting to discover the world of Explorer Scouting.

Ellis Completes Course

ARMY/AIR FORCE HOMETOWN NEWS—Gerry L. Ellison of Mr. and Mrs. Carl S. Allen of Colmesneil, Texas, recently completed a Chaparral crewman course at the U.S. Army Air Defense School, Fort Bliss, Texas. During the training, students learned all phases of the firing and tracking systems of this air defense weapon.



To Be Wed

ENGAGED—Mr. and Mrs. Jack Rye of 915 Bowie, Vidor, Texas, announce the engagement of their daughter, Brenda Jane to Edwin F. Findley, son of Captain and Mrs. Ernest F. Findley of Warren. The wedding will be at 2 o'clock Saturday, December 20, in the First Baptist Church of Warren. Rev. Kenneth M. Cauthen will officiate. Miss Rye is a 1979 graduate of Vidor High School and a member of the Rye Family Singing Group. She is employed as a medical records transcriptionist at Schlesingers Geriatric Center in Beaumont. Edwin is a 1979 graduate of Warren High School. He is a licensed minister presently attending East Texas Baptist College in Marshall, Texas. He has also served as a reporter and photographer for The Tyler county Booster. After a Tour of the Holy Land with Wilson World Tours, Inc., they will make their home in Beaumont.

It's A Boy!

Nathan Earl Jordan was born on November 16, 1980 at the Lake Charles Memorial Hospital. He weighed 6 lbs. 10 oz. and was 19 1/2 long. Parents are Mr. and Mrs. John Jordan of Lake Charles, Louisiana. The proud grandparents are Mr. and Mrs. J.E. Jordan of Dallasville and Mr. and Mrs. George Downing of Colmesneil. Great-grandmothers are Mrs. Addie Jordan of Spurger and Mrs. G.R. Downing of Colmesneil. His great-grandmother and Mrs. Viola West of Colmesneil. Great-grand-

Essay Contest On Conservation

The Long Leaf Soil and Water Conservation District is sponsoring an essay contest for all Tyler County High School students. Val Blanchette, Chairman of the District. The subject is "Conservation—Our Best Insurance." Information concerning the contest has been distributed to all high schools in Tyler County.

New Tool AUCTION Monday, Dec. 8 7:00 P.M. Prizes are: \$25 for First Place, \$15 for Second and \$10 for Third. Essays will be judged by the Woodville Women's Study Club and the First Essay sent to Temple, Texas for selecting the Regional Champions. Regional winners will receive trophies. This contest is open to Tyler County High School boys and girls and does not jeopardize Texas Interscholastic League eligibility.

BASKET BONANZA JUST ARRIVED! A huge selection of baskets, trays, pens, straw boxes, saguaro boxes & market baskets for all around the home. Visit Woodville's most complete gift department at Sullivan's.



At Citizens State Bank, customer service is our cup of tea.
One trip is all it takes. Take Santa's advice and join our Christmas Club now. By next year's holiday time, you'll have a tidy sum saved up for all your Christmas shopping. It's easy! Start your Christmas Club account today.

CITIZENS STATE BANK
P.O. BOX 109 WOODVILLE, TEXAS 75979 Phone 283-2561
Each depositor insured to \$100,000
FDIC
FEDERAL DEPOSIT INSURANCE CORPORATION

Office Supply Center
Perfect Copies 10¢ Letter or Legal Used Paperback Books Priced 10¢/10¢ to Half Price Complete line of Home & Office Supplies
501 W. Blinn P.O. Box 283-5164

HOMETOWN USA

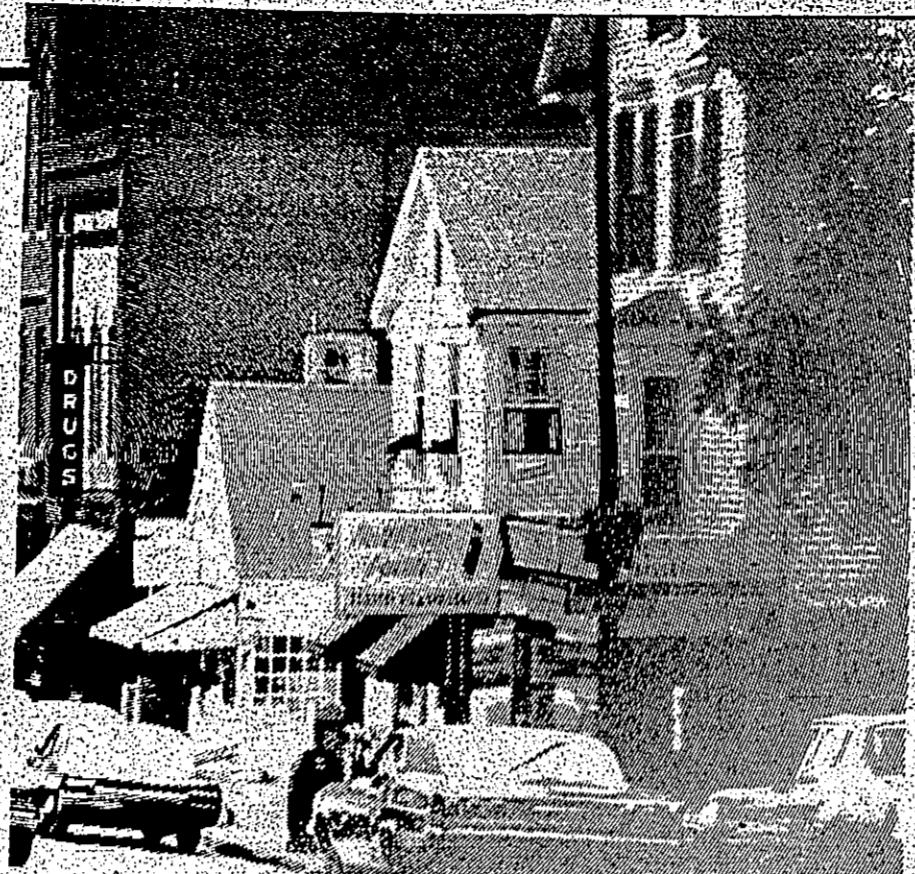


Give a good long look at **C-O-S-T-S**

Your town and the one place where your patronage is truly appreciated. Your local merchant is a friend and neighbor - he wants your business and will go to all lengths to keep it... think about it!

"...it just makes a lot of sense!"

Shop at home



where the "buys" are

Your local merchants who offer a wide variety of goods and services also offer a bonanza of "bargains" - and you'll find him always willing and able to help you get the "most for your money."

The Following Area Merchants Welcome You

Brookshire Bros. N. Charlton 283-3333	Montgomery Ward (Weeks Sales Agency) 100 S. Charlton 283-3791	Woodville Ready Mix Concrete & Supplies E. Bluff 283-2622	Woodville Florist Inc. 215 Kelley Blvd 283-2571	PARGAS 311 S. Magnolia 283-2578
A & M Motor Co. 605 S. Magnolia 283-2534	Davis General Merch. Colmesnell 837-2958	Yum Yum Factory 207 W. Bluff 283-7410	Mann-Direct Furniture 206 W. Bluff 283-3470 302 N. Magnolia 283-5211	Allison Chevrolet Hwy 69 Colmesnell 283-7605 837-2244
DAVES Hwy 69 283-5502	Pic & Save Drive In Grocery 518 S. Magnolia 283-2221	McClure Furniture 305 N. Magnolia 283-2519	Allstate Clemmons Ins. & Real Estate 102 S. Charlton 283-2514	Gray-Way P.O. Box 666 Woodville 713-283-2272
Phillips Heating & A/C Beaumont Hwy 283-5247	The Furniture Center 107 E. Bluff 283-2805	Scott's Trendsotter 306 S. Charlton 283-3068	Birdwells Machine & Welding Shop 283-3405	Doug's Auto Sales 410 N. Magnolia 283-3650
Wal-Mart Discount City Hwy 69 & 287 South Woodville 283-2278	Woodville Inn 201 N. Magnolia 283-3741	Woodville Convalescent Center 102 N. Beach 283-2555	Knapp Ford Sales Inc. 104 Pine St. 283-2526	Childress Monument Beaumont Hwy 283-2487
SULLIVAN'S FOR ALL YOUR HARDWARE NEEDS 211 W. Bluff 283-2231	Turner's Radiator & Custom Exhaust Service 1100 S. Magnolia 3777	Jarrott's Pharmacy 205 S. Magnolia 283-2550	Southeast Texas Savings & Loan Assn. 400 W. Bluff 283-3747	Magnolia Drive-In's 600 N. Magnolia 283-5235 402 S. Magnolia 283-2492 W. Bluff 283-5179
Edwards Funeral Home 113 W. Holly 283-2511	Woodromes Auto & Home Glass 312 S. Magnolia 283-7594	Koller Aluminum Products of Texas, Inc Hwy 69 North 283-2545	Lollypop Boutique 1304 W. Bluff 283-2741	J.B. Best & Co. 114 S. Charlton 283-2124
Bailey Fireplace & Specialty Shop 801 West Bluff 283-7129	Temple-Eastex Forest 403 S. Magnolia 283-3663	Woodville Auto Parts 523 S. Magnolia 283-3782	Davis Food Market Hwy 69 & 287 Warron 547-3339	East Texas Energy Saving Products 502 N. Magnolia 283-7985
Jackson Gulf 110 S. Magnolia 283-2724	Dumont Electric Motor Repair 512 S. Magnolia 283-2674	Discover Chiropractic Dr. Harold Herrington 409 S. Magnolia 283-7312	Globe Mann Ins. Agency 104 W. Bluff 283-2528	Wheat Abstract-Tyler County Title Combined Companies 300 W. Bluff 283-2711

Thanks For Shopping Tyler County!

CLASSIFIED

DEADLINE: MONDAY 5 P.M. CALL 283-2569

FOR SALE

CARD OF THANKS The family of Mr. Richard...
FOR SALE: Fresh daily, butter, milk and eggs...
FOR SALE: Bobman pup...
FOR SALE: 50 Shubert...
FOR SALE: Case tractor...
FOR SALE: Seven...
FOR SALE: Two...
FOR SALE: 15' foot...

FOR SALE

FOR SALE: 1978...
FOR SALE: 1976...
FOR SALE: 1979...
FOR SALE: 1977...
FOR SALE: 1975...

FOR RENT

FOR RENT: 1978...
FOR RENT: 1977...
FOR RENT: 1976...
FOR RENT: 1975...

EMPLOYMENT AVAILABLE

Spurger
We are now accepting applications for full-time clerk...
FREE LIVING when you purchase...
FREE

FOR SALE

Registered Black Angus Bull
7 Years Old
Phone 283-2410

J&L Bar-B-Q

Keep your eyes open for the new J&L Bar-B-Q opening soon.
Intersection of Hwy 69 & 287

Christmas Special 1976 Monte Carlo \$2,495 J&J Auto Sales 213 S. Magnolia

MADAM BLACK READER & ADVISOR

Advises and helps solve all problems of life...
Christmas Special 1976 Monte Carlo \$2,495 J&J Auto Sales 213 S. Magnolia

A Good Stock 1981 Cars & Trucks 1980 Demos Used Cars

1980 CAPRICE Pic - Loaded, 9,000 miles
1980 BLAZER-Loaded
1978 MONTE CARLO
1979 BLAZER - Loaded
1974 CHEV. Pickup-Clean
1977 MALIBU-4 Dr.
1978 IMPALA-4 Dr.

Allison Chevrolet Inc.

(Formerly Ogden Chevrolet)
Colmesnell 837-2244
Woodville 283-7605
GM QUALITY SERVICE/PARTS
GENERAL MOTORS PARTS DIVISION

The Tyler County BOOSTER CLASSIFIED ADS GET RESULTS

Gray's Septic Tank Service Pumping & Repair Woodville 283-3243

NEW TOOL AUCTION
Monday, Dec. 8 7:00 P.M.
Lions Club Hall Woodville, Texas
SEE PAGE 8 FOR COMPLETE LISTING!

NEW BOOK AVAILABLE THE HOW-WHAT-WHY OF HOME BUYING PROCEDURES

This Easy-to-Read book will better prepare you to:
• NEGOTIATE THE LOWEST PRICE POSSIBLE
• ANSWER YOUR QUESTIONS AS TO WHETHER TO WAIT FOR LOWER INTEREST RATES
• SOLVE YOUR DOWN PAYMENT PROBLEMS
• OBTAIN THE MORTGAGE YOU NEED
• BE LEGALLY AND FINANCIALLY PROTECTED AT ALL STAGES OF THE NEGOTIATION
• PROTECT YOURSELF AGAINST UNEXPECTED EXPENSES AFTER THE PURCHASE

No payments until April 1. No fooling. Money off, too.

The Kubota M Series tractors are designed to help you reap a profit. If you buy a 2-wheel drive M Series tractor now, you'll save \$1,000. And if you use the Kubota finance plan, you won't even have to make a payment until April 1, 1981. Won't get a finance charge until March 1. The Kubota M Series tractors, from 55 to 81 horsepower, are so economical they won't allow you under. Offer good through (date).
KUBOTA Universal Tractor & Equip. Hwy 69 Frank Collier 755-0055 1/4 Mile South Y 429-3028

LOOK Package Offer!

1st time ever offered on mobile homes and land. Combine in one low monthly investment 100% financing on land, well, septic tank, driveway, carpet, to qualified purchasers. Your land or ours.
See: Jack Lanell or Chris AAA-Mobile Homes, Inc. 2430 Hwy. 96 S. Lumberton, Tx. 755-4985

Griffin's Truck Stop & Cafe

UNDER NEW MANAGEMENT
BUFFET Monday-Friday 11 a.m. - 2 p.m.
Open 24 hrs. daily except Sunday
DIESEL-GASOLINE Hwy 69 South 283-7404

CLASSIFIED AD MAIL-O-GRAM

20 WORDS \$3.20 Add 10¢ for each additional word over 20 words.
Name _____
Address _____
Phone _____
Run my ad: Payment Enclosed _____
Weeks _____
Up to 20 Weeks Only \$3.20
Add 10¢ for each Word

MOBILE HOMES FOR SALE

LOOK! LOOK! LOOK! BIG BUDGET... PRICES SLASHED... Also we buy 14 wide mobile homes...

LOST

LOST: 1980 REWARD for return of... WOODLAND GALLERIES... PAINTING & SERVICES...

PUBLIC NOTICE

Public notice regarding land acquisition and surveying in the Tyler County area.

PUBLIC NOTICE

Public notice regarding land acquisition and surveying in the Tyler County area.

PUBLIC NOTICE

Public notice regarding land acquisition and surveying in the Tyler County area.

JACK BUNN REAL ESTATE

283-3832 Dam-B, Texas 283-3595 REALTOR. Need Bad! Small or Large Tracts of Land to Sell. Home completely refinished inside & out...

NEED LAND LISTINGS TO SELL

NEED LAND LISTINGS TO SELL. (1) 3.16 acre, 2 1/2 bdrms. 1 1/2 bath... (2) 1.5 acre, 2 bdrms. 1 bath... (3) 1.5 acre, 2 bdrms. 1 bath...

PUBLIC NOTICE

PUBLIC NOTICE. 11, 1974 and filed for record... 1974 and filed for record...

PUBLIC NOTICE

PUBLIC NOTICE. 14.97 acre, 2 bdrms. 1 bath... 14.97 acre, 2 bdrms. 1 bath...

FOR SALE

FOR SALE. Offered by Woodville Church of Christ. Approx. 50 Acres located just outside city limits East of Woodville, known as Carlo Hill Estate.

DOLLY STURROCK REAL ESTATE

426 S. Magnolia, Woodville 283-3168. REALTOR: James Nichols - 283-5136 Jackie Brown - 837-2973. HOME: 3 Br., 1 B., C. heat, 2 1/2 baths...

HOLDERMAN REAL ESTATE

"The Problem Solvers". Size BENEFITS PRICE. 27-1-Fr. Fenced. Vinyl siding, Shade...

27-1-Fr. Fenced. Vinyl siding, Shade \$21,000. 27-1-Mobile. Extra nice. Bldgs. Fenced \$25,000. 27-1-Fr. New Carpet. Nice Drapes, Shade \$32,500. 3/2-Fr. Alum. siding. Fireplace. Large \$45,500. 2/2-Br/Fr. Beautiful setting. Cent. H/A \$44,500. 3/2-Fr. Extra nice home. 0.7 ac. Garden shop. Shop. \$59,500. 3/2-Fr. Custom decor. Fireplace, storage \$74,500. 5/3-Br. Built for a family. You'll love the den & kitchen. \$85,000. 3/3-Br. Huge rooms & Closets. \$98,000. 3/2-Br. Ceiling fans. Make offer in the 90's. Contemporary LR & Den. Shop \$98,000. Several Lake Homes \$12,800 & up. ASK ABOUT TERMS. Grady & Eleanor Holderman 283-5446. Colleen Blackwell 283-5189. Ken George 283-2430. J. Robert McCombs 283-2135. CALL 283-3727 or visit us at 802 W. Bluff & Woodville.



BIG HUNTER—Michael Dickerson, of Rockland, dropped this 8-point buck last Friday. Most of the deer turned in for the 'Best Buck' contest have been unusually big despite the recent summertime drought.

AUCTION

TRUCKLOAD SALE OF NEW TOOLS. Monday, December 8th 7:00 PM East Lions Club Hall Hwy 190 East Woodville, Texas

NOTICE: We will offer for sale at public auction, thousands of dollars worth of new brand name heavy duty industrial tools. There will be many job-lots sold. So all dealers, wholesalers and salvage buyers, be sure to attend. ROAD-OP-CF. Chicago ROCKWELL - WEN - MILLER FALLS - SPOONMAN - SAK - HERBAND - TRU-CRAFT - JET - BLUELINE - EMERSON - BUFFALO - VISE GRIP - CHANNEL LOCK CUMMINGS. SHOP TOOLS, POWER TOOLS, AIR TOOLS, FARM SUPPLIES. 3 - 1/4 H.P. Air Compressor, 1 - 3 H.P. Air Compressor, 30 - Heavy Duty 4" 5" and 6" Vices, 30 - Channellock Pliers, 2 - Porta-Power, 16 - Hand Saws, 15 - Drill Press Vices, 40 - 12 pc. Punch & Chisel Sets, 13 - Hydraulic Jacks, 2-20 Ton, 2 - Floor Model Drill Presses, 48 - 4 pc. Crescent Wrench Sets, 16 - 2 Ton, 20 - 40 pc. Socket Sets, 10 - Air Chisels, 20 - Steel 100 Meas-Corr-A-Long, 12 - 9/2" Socket Sets, 10 - Air Chisels, 20 - Steel 100 Meas-Corr-A-Long, 19 - 4 Grooved Pliers, 50 - Garden Hoses, 3 - Orbital Sanders, 9 - Air Drills, 11 - Air Hammer, 9 - W Deep Well Impact Socket, 25 - W Impact Drivers, 12 - Heavy Duty Grinders (4 to 2 1/2"), 28 - 100 Power Cable, H.D., 27 - Booster Cables, 30 - Trouble Lights, 43 - 7 pc. Screwdriver Sets, 3 - Circular Saws (7 1/2"), 2 - Gas Air Compressor, 12 - 1/2" Socket Sets, 26 pc. 14 - Pipe Wrench Sets, 17 - Angle Air Ratchets, 11 - Air Grinders, 2 - Battery Chargers, 2 - Floor Jacks Heavy Duty, 8 - W Impact Socket Sets, 10 - Heavy Truck Traps, 33 - Air Hoses, 2 - 1/4" Impact, 10 - Gear Pulleys, 2 - Power Hack Saws, 2 - 1/2" & 3/4" Air Impact Wrenches, 38 - 8 pc. Deepwell Socket Sets, Many Bundles of Electrical Tapes, 60 - Allen Wrenches, 13 - Sets Welding Hoses, 17 - W & W Electric Drills, 8 - W Flex Ratchets, 41 - 14 pc. Tap & Die Sets, 18 - 4 pc. Pipe Wrench Sets, 10 - 28 pc. H Speed Drill Bits, 50 - 11 pc. Wrench Sets, 8 - 2 Drawer Tool Boxes, 19 - 1/2" & 3/4" Impact Socket Sets, 42 - Hack Saws and Blades, 20 - 40 pc. Socket Sets, MANY OTHER MISCELLANEOUS ITEMS!

PARC Entrance Eliminated. The Fort Worth District, U.S. Army Corps of Engineers has announced plans to eliminate one of the entrances into Sandy Creek Park at Town Bluff Dam and B.A. Steinhagen Lake. Sandy Creek Park is a year-round 'use' camping area. Due to multiple entrances to the park, regulation of traffic and collection of user fees has been difficult. By closing the south entrance, we will enable better control of the park and will reduce operation and maintenance cost. The road is scheduled to be closed on December 1980. Anyone having questions concerning this action may contact either the Sam Rayburn office at A/C 713 / 384-5716 or the Fort Worth District, Operations Division at A/C 817 / 334-2705.

Brookshire Bros. THE BEST FOR LESS

DISCOUNT DRUGS

WOODVILLE, TEXAS PHONE 283-3758

How do I transfer my prescription to Brookshire Bros. Pharmacy? It's Simple. JUST BRING YOUR OLD LABEL OR BOTTLE TO BROOKSHIRE BROS. AND THE PHARMACIST WILL DO IT FOR YOU. YOU MAY ALSO PHONE YOUR REFILL PRESCRIPTION TO BROOKSHIRE BROS. AND THE PHARMACIST WILL HANDLE ALL DETAILS FOR YOU.

ATTENTION SENIOR CITIZENS. IN ADDITION TO OUR REGULAR 10% DISCOUNT TO ALL SENIOR CITIZENS, WE ALSO OFFER THIS SPECIAL COUPON ON PRESCRIPTIONS. \$300 OFF WITH THIS COUPON. WHEN YOU BRING US YOUR REFILLABLE PRESCRIPTION FROM ANY PHARMACY OTHER THAN BROOKSHIRE BROS. WE WILL OFFER YOU \$300 OFF. IF LESS THAN \$300, WE WILL OFFER YOU \$300 OFF. OFFER VALID ONLY ON RX PURCHASE. OFFER EXPIRES DECEMBER 31, 1980.



NO PRESCRIPTION PRICES LOWER!!!

Garage Sale Notice

THE CHURCH MOUSE: Open every Tuesday and Friday mornings 10:00 a.m. to 2:00 p.m. Resale items and gifts located at Saint Paul's Episcopal Church, Hwy. 190 West, Woodville, Texas. 79010. If this station is not served within ninety days after the date of this issue, it shall be returned unopened to the donor.

YANQ SALE: Furniture, clothing, household items, 1000 items from Woodville on Hwy. 190.

GARAGE SALE: 2 family, 49-1/2 ft. x 8-1/2 ft. 1/2 mile open Bluff Rd. (FM 1748) watch for signs. 40-1/2

INITIATION FOR BIDS: Tyler County Commissioners Court, Woodville, Texas will receive general construction bids for Courthouse remodeling work to accommodate an elevator and wheelchair lift until 10:00 A.M. CST on the 8th day of December, 1980. All bids must be returned to the Architect's Office on U.S. Highway 190 West 2 miles west of Woodville, Texas, by 10:00 a.m. on the 8th day of December, 1980. Proposals and Contract Documents (including plans and Specifications) are on file at the Tyler County Courthouse and the Architect's Office on U.S. Highway 190 West 2 miles west of Woodville, Texas. Bids will be opened on the 8th day of December, 1980, at 10:00 a.m. CST in the Tyler County Courthouse. The lowest responsible bidder will be awarded the contract. The Contractor will be required to perform substantial portions of the work and his own contract documents, including plans and specifications, shall be submitted to the Tyler County Commissioners Court for review and approval. The Contractor will be required to furnish and pay for a performance and payment bond in the amount of 10% of the bid. The bond shall be submitted to the Tyler County Commissioners Court by the Contractor on the 8th day of December, 1980. The bond shall be in the name of the Tyler County Commissioners Court. The Contractor will be required to furnish and pay for a performance and payment bond in the amount of 10% of the bid. The bond shall be submitted to the Tyler County Commissioners Court by the Contractor on the 8th day of December, 1980. The bond shall be in the name of the Tyler County Commissioners Court.

NOTICE: YOU ARE HEREBY COMMANDED to appear and answer to the Accrual Order which will be required to furnish and pay for a performance and payment bond in the amount of 10% of the bid. The bond shall be submitted to the Tyler County Commissioners Court by the Contractor on the 8th day of December, 1980. The bond shall be in the name of the Tyler County Commissioners Court.

BEAT THE HIGH COST OF... JERRY TOLBERT Real Estate 410 N. Magnolia St. 283-2221

WOODVILLE, TEXAS. 283-3758. 1980 REWARD for return of... WOODLAND GALLERIES... PAINTING & SERVICES...

WOODVILLE, TEXAS. 283-3758. 1980 REWARD for return of... WOODLAND GALLERIES... PAINTING & SERVICES...

WOODVILLE, TEXAS. 283-3758. 1980 REWARD for return of... WOODLAND GALLERIES... PAINTING & SERVICES...

WOODVILLE, TEXAS. 283-3758. 1980 REWARD for return of... WOODLAND GALLERIES... PAINTING & SERVICES...

WOODVILLE, TEXAS. 283-3758. 1980 REWARD for return of... WOODLAND GALLERIES... PAINTING & SERVICES...

WOODVILLE, TEXAS. 283-3758. 1980 REWARD for return of... WOODLAND GALLERIES... PAINTING & SERVICES...

WOODVILLE, TEXAS. 283-3758. 1980 REWARD for return of... WOODLAND GALLERIES... PAINTING & SERVICES...

WOODVILLE, TEXAS. 283-3758. 1980 REWARD for return of... WOODLAND GALLERIES... PAINTING & SERVICES...

WOODVILLE, TEXAS. 283-3758. 1980 REWARD for return of... WOODLAND GALLERIES... PAINTING & SERVICES...

WOODVILLE, TEXAS. 283-3758. 1980 REWARD for return of... WOODLAND GALLERIES... PAINTING & SERVICES...

Holiday Sale

Men's Suits 20% to 50% off. Ladies Sweaters 1/3 off. Men's Jackets were \$299 now \$168. Men's Cotton Flannel Shirts \$4.88 and \$6.88. Joggers & Sportsweat 1/3 off. Jump Suits & Sportswear 1/3 off.

Entire Stock!

Small Electric Appliances: Mix Masters Toasters, Coffee Makers & More 1/3 off. American Tourister Luggage 1/4 to 1/3 off. Girls Coats Sizes 4-14 25% off. Ladies Dresses Sizes 6-24 1/3 off. Ladies Coats 25% off. Bras & Girdles 20% off.

Free Gift Wrapping. Free Parking West Entrance.

Best Co. logo and address information.

Advertise In The Booster

Shop Tyler County. This Holiday Season!

Shop Tyler County. This Holiday Season!

Shop Tyler County. This Holiday Season!

Shop Tyler County. This Holiday Season!

Shop Tyler County. This Holiday Season!

Shop Tyler County. This Holiday Season!

Shop Tyler County. This Holiday Season!

Shop Tyler County. This Holiday Season!

Shop Tyler County. This Holiday Season!

Shop Tyler County. This Holiday Season!

Shop Tyler County. This Holiday Season!

Shop Tyler County. This Holiday Season!

Shop Tyler County. This Holiday Season!

Shop Tyler County. This Holiday Season!

Shop Tyler County. This Holiday Season!

Waterfowl Dress, Store, Cook

For best flavor, eye appeal and high quality, waterfowl needs special care in field dressing and storage.

Hunters need to know how to field dress, cool, transport, age, pluck and prepare waterfowl for eating.

PROPER FIELD CARE

Dress duck and goose immediately since proper field care will prevent spoilage and off flavors.

Dress birds completely as soon as possible.

Remove the entrails by cutting a slit just below the breastbone, down to and across the vent. Remove all the contents.

Avoid breaking the gall bladder sac on the liver. Bleed from it will alter the meat flavor.

Save the gizzard, heart and liver for eating. Place gizzards in a plastic bag. Cut near the neck base and remove the crop.

Wipe the body cavity clean with a moist cloth. Moisture spreads bacteria which cause spoilage.

Most hunters remove the two oil glands found on the upper surface of the tail—or they remove the entire tail structure.

Cool the bird by allowing air to circulate in the body cavity. Insert a small stick in the cavity to help hold it open and speed cooling.

Also, place birds in a cooler—if the outdoor temperature is not cold.

AGING DUCK AND GOOSE

Age waterfowl will remove much of the gamey flavor and help develop tenderness.

To age a field dressed duck, hang it at a temperature of 40-45 degrees F. for three to four days.

New Tool Auction
Monday, Dec. 8
7:00 P.M.
Lions Club Hall
Woodville, Texas
SEE PAGE 4 FOR COMPLETE LISTING!

We're Celebrating Our Anniversary

ALL VEGETABLE SHORTENING SAVE 61

CRISCO

3 LB. CAN \$1.78

LIMIT 1 W/10.00 PUR.

HY-TOP CANNED BUTTERMILK or REG. BISCUITS

3 CANS 10 1.

DOUBLE LUCK CUT GREEN BEANS

4 303 CANS 1.

BORDEN'S DELICIOUS ICE CREAM

1/2 GAL. ROUND CARTON

1.79

DEL MONTE CREAM OR WHOLE KERNEL CORN

REG. CUT OR FRENCH CUT GREEN

16 OZ. CAN

BEANS

SWEET OR PEAS

17 OZ. CAN

2.79

COCA COLA

32 OZ. BTL.

\$1.69

LIMIT 2 W/10.00 PURCHASE PLUS DEPOSIT

DUNCAN HINES REG. LAYER or PUDDING CAKE MIX

ASSTD. FLAVORS SAVE 20'

PKG. **75c**

HY-TOP WHITE or YELLOW CORN BREAD MIX

5 6 oz. POUCH **\$1.00**

MARYLAND CLUB COFFEE

LB. CAN **\$2.49**

DEL MONTE FRUIT COCKTAIL OR PEAR HALVES

16 OZ. CANS **39c**

DEL MONTE CHOPPED OR LEAF SPINACH

3 16 OZ. CANS **\$1.00**

Our Produce Has It All...Fresh, Quality and Variety!

BANANAS

3 LBS. **\$1.00**

GOLDEN RIPE CABBAGE

4 LBS. **\$1.00**

AVOCADOS

4 FOR **\$1.00**

LEMONS

7 FOR **\$1.00**

POTATOES

5 LB. BAG **99c**

BLACK RUBBER PLANT

6" POT **\$3.99**

DIAMOND BULK LARGE WALNUTS

1 LB. **\$1.09**

FILBERTS

1 LB. BAG **\$1.79**

ALMONDS

1 LB. BAG **\$1.73**

DIAMOND MEDIUM WALNUTS

1 LB. BAG **\$1.09**

BRAZIL NUTS

1 LB. BAG **\$1.19**

MIXED NUTS

1 LB. BAG **\$1.49**

WE HAVE A COMPLETE SELECTION OF FRUITS AND NUTS FOR ALL YOUR HOLIDAY NEEDS.

Budget Priced Freezer Fillers

HY-TOP CHEESE-HAM BURGER SAUSAGE-PEPPERONI PIZZAS

12 OZ. PKG. **99c**

GORTON NEW BATTER FISH STICKS

14 OZ. PKG. **\$1.99**

POTATOES

20 OZ. BAG **79c**

COOL WHIP

8 OZ. TUB **85c**

BREAD DOUGH

3 LB. **\$1.25**

MEAT PIES

12 OZ. PKG. **\$1.00**

MANUFACTURERS COUPONS REDEEMED FOR DOUBLE FACE VALUE

50c + 50c = \$1.00

REDEEM ANY MANUFACTURERS COUPON WITH THIS COUPON. PURCHASE THE PRODUCT. BROOKSHIRE BROS. WILL LOVE YOU! THESE TWO COUPONS INDICATED ON THE COUPON.

IMPORTANT: DOUBLE COUPON SAVINGS OFFER DOES NOT APPLY TO "FREE" OTHER "1/2" OFF COUPONS OR COUPONS OVER \$50 VALUE. COUPON REFUND NOT TO EXCEED VALUE OF EACH ITEM.

DEL MONTE WHOLE GREEN BEANS

2 16 OZ. CANS **89c**

DEL MONTE CRUSHED SLICED CHUNK PINEAPPLE

15 OZ. CANS **59c**

TOMATO SAUCE

5 16 OZ. CANS **\$1.00**

HIGH POINT VANILLA WAFERS

12 OZ. PKG. **89c**

BORDEN'S HI-PRO MILK

1/2 GAL. CTN. **1.09**

BORDEN'S SWISS STYLE YOGURT

ASSTD. FLAVORS

8 OZ. CTN. **3.19**

HY-TOP SOUR CREAM

8 OZ. CTN. **49c**

MIRACLE WHIP

32 OZ. JAR **1.39**

HY-TOP FLAVOR

DRINKS

2 LITRE PLASTIC BTLs. **89c**

QUANTITY RIGHTS RESERVED

MINUTE MAID ORANGE JUICE

12 OZ. CAN **89c**

PATIO DINNERS

12 OZ. SIZE **39c**

Shop Our Fine Meats for the Best in Quality Plus 5¢ Green Stamps

FRESH QUARTER SLICED PORK LOIN

LB. **1.19**

FRESH CENTER CUT RIB PORK CHOPS

12 OZ. PKG. **\$1.79**

FRESH CENTER CUT LOIN ROAST

12 OZ. PKG. **\$1.29**

FRESH EXTRA THIN BREAKFAST PORK CHOPS

ROBELEIN JR. **1.89**

FRESH COUNTRY STYLE SPARE RIBS

OSCAR MAYER **1.59**

PORK CHOPS

12 OZ. PKG. **\$1.29**

KEYLIME WHIPPED PARKAY or STICK-LB. PKG. KRAFT SOFT DIET PARKAY

INSTANT DECAFFEINATED COFFEE

HIGH POINT 8 OZ. JAR

89c

CHICKEN HENS

6 OZ. PKG. **69c**

CHICKEN HENS

10 OZ. PKG. **1.29**

CLUB HAMS

ROBELEIN COOKED **2.49**

COOKED HAMS

8 OZ. **1.79**

PATTIES

ROBON ROLL **1.89**

BOLOGNA

8 OZ. **1.29**

SAUSAGE

1 LB. ROLL **1.19**

CHOPPED HAM

3 OZ. **1.69**

BACON

1 1/2 LB. **2.49**

HICKORY LEAN

12 OZ. PKG. **1.19**

ROAST

12 OZ. PKG. **1.29**

ROAST

12 OZ. PKG. **1.29**

HICKORY LEAN

12 OZ. PKG. **1.19**

KRECKS (TURKEY)

1 LB. **89c**

PINKY PIGS

12 OZ. PKG. **99c**

SPARE RIBS

(3/5) LB. **1.29**

PINATA ASSORTED BURRITOS

EACH **49c**

CHEESE SPREADS

16 OZ. **2.59**

GROUND BEEF

1 LB. **1.59**

BEAUTIFUL IMPORTED STONEWARE... AVAILABLE THRU OUR ECONOMICAL FEATURE-OF-THE-WEEK OFFER!

ON SALE THIS WEEK! DESSERT DISH

EACH WITH COUPON **59c**

MATCHING ACCESSORIES ALSO AVAILABLE THROUGHOUT THE PROGRAM. NO PURCHASE NECESSARY!

EXTRA STAMPS

WITH THIS COUPON AND \$5.00 Or More Purchase (Excluding Cigarettes)

GOOD: DECEMBER 24, 1980

Brookshire Bros. THE BEST FOR LESS

MORTON HOUSE SLOPPY JOE

15 OZ. CAN **\$1.19**

Brookshire Bros. THE BEST FOR LESS

1100 NORTH CHARLTON WOODVILLE, TEXAS

CRACKERS

1 LB. BOX **59c**

EXTRA STAMPS

WITH THIS COUPON AND PURCHASE OF \$2.00 OR MORE FRODOGAGE INGREDIENTS

GOOD: DECEMBER 24, 1980

Brookshire Bros. THE BEST FOR LESS

FUNK & WAGNALLS NEW ENCYCLOPEDIA

THIS WEEK'S FEATURES VOLUMES 18 & 19

EACH **\$2.99**

SULLIVAN'S
211 W. Bluff
283-2231
Open All Day
Saturday!

BUSINESS & SERVICE DIRECTORY

To Get The Job Done Right, Hire A Professional!

Place Your Ad Here!

ADVERTISE HERE!
CALL 283-2560

Wanted
Buyer
Large & Small
Trucks of Pulpwood &
Logs
Jimmy Mahan
Call 837-2253
(Pine and Hardwood)

WOODROME'S AUTO & HOME
312 S. Magnolia St.
Woodville, Texas
283-7394

Barnes Plumbing
Preston Barnes-Master Plumber
Office hours 8:00 till 4:30 Weekdays
104 Beaver Street
Phone 283-7619 Call 969-2339

DOUBLE "C" ELECTRIC
Industrial-Commercial-Residential
20 YEARS EXPERIENCE
Call 283-5985
Serving All Of Tyler County

A & A Construction Company
No Job Too Big or Too Small
Framing & Remodeling
Call 547-3688

MAJESTIC MARBLE
Specializing in Custom Built Vanity
Tops, Tub Enclosures and Showers.
Call C.M. Kelly
384-4438
Hwy. 190 West Jasper, Texas

KIRSHNER PLUMBING
Licensed Plumber # 8527
24-Hour Service
429-5313
Barlow Lake Estates
Woodville

For the best in furniture and appliances-SEE...
McClure Furniture
Zenith, Maytag, La-Z-Boy Chairs,
Toll City, Simmons, Sealy, Amara
Bassett, Armstrong carpeting
305 N. Magnolia 283-2519

VINYL SIDING
40 year warranty vinyl siding
will not chip, flake, fade, bend or
shrink. Electricity. Insulation install-
ed with siding can cut your heating
bill in half. Free estimate. Financing
available.
Sanderson Siding Co.
283-5430
Carpentry-Awnings-Roots-Outlets
Screen Rooms-Remodeling

NEW TOOL AUCTION
Monday, Dec. 8
7:00 P.M.
Lions Club Hall
Woodville, Texas
SEE PAGE 7 FOR
COMPLETE LISTING

NOVA'S GUITAR SCHOOL
Country & Western
Pup & Folk
Private Lessons
Guitars & Strings
For Sale
283-2603 Woodville

Sanders Bake Shop
Special Order Cakes, Pies & Cookies
Catering Service & Professional Decorating
Free Delivery with Donuts
717 W. Bluff 283-2540

TURNER'S RADIATOR & CUSTOM EXHAUST
GENERAL AUTO REPAIR
24 HOUR WRECKER SERVICE
Days 283-3777
Nights 283-5863

JM MAHAN PLUMBING
General Repair & Installation
Complete Line of Plumbing Fixtures
& Supplies
105 E. Wheat St. Woodville, Tx.
283-2119 or 283-5982

Reliable Refrigeration & Appliance Repair
Hwy 69, Woodville
CALL 283-7433
20 years experience

Appliance Service
Washer & Dryer A/C Stove
Dishwasher & Refrigerator & Freezer
Spurger Service Center
Hwy. 92 429-3212

Ramsey's Mini Warehouse SELF STORAGE
283-3481
283-5069
NOW LEASING
1 Mile West of Hwy. 190 East Woodville, Texas

Just opened!
HALLS BODY & AUTO REPAIR
SPURGER
1 1/2 miles S. Spurger Hwy 92
429-7409

Aluminum Awning & Patio Company
Commercial & Residential
Awning • Screen Rooms
Room Additions • Patio Covers
Mobile Home Supplies • Carports
429-3164 Warren, Tx.

EAST-TEX Energy Saving Products
Bill Carroll
Office: 283-7355 Home: 547-3273
502 N. Magnolia
Install Custom Made Storm Windows And Doors
An Authorized Dealer For
KELLER ALUMINUM PRODUCTS OF TEXAS

Allstate
rates now 35%
lower than
Texas state
rates for
Homeowners
insurance.



Texas Homeowners
Allstate Homeowners
Dwelling insurance helps
you fight the cost of
living—as we protect
your home against loss
from fire and many other
hazards.
Bring in your present
Homeowners policy and
compare.
*Applies to policies with a minimum
deductible of \$1000.

Allstate
You're in good hands
Clemmons Ins.
102 S. Charlton
283-2514



9 POINTER—Bobby Evans of Woodville bagged this good lookin' 9 pointer on Thanksgiving Day with a .308 automatic Remington. He had been hunting since about 6 a.m. that morning and shot the deer at 8 a.m. at the Circle 5 McBride Ranch.

Ants Are Problem For Pine Seedlings
With planting season just around the corner, forest landowners need to be aware of the problems of planting pine seedlings in areas infested with the Texas leaf-cutting ant, commonly called "the town ant."

"The most important thing for landowners to remember," states Joe Pace, entomologist with the Texas Forest Service, "is that if you plant town ants on their property, they should contact one of our foresters to check the extent of their infestation before planting."

"Most town ants like well-drained, sandy or sandy-loam soils in which to situate their towns. A town is a large number of crater-shaped mounds, usually 5 to 14 inches high and about one foot in diameter. Each mound usually surrounds an entrance hole, and a typical town may cover an area from several square feet to sometimes more than an acre."

"The activity of the ants usually depends on temperature; however on warm winter days, ants can be seen feeding on vegetation in the vicinity of the town. Here is where the pine seedlings come in. The ants can devastate an acre of pine plantation in just a few days, by stripping the leaves, needles and buds from every single pine seedling."

"Unknown landowners," continued Pace, "may spend several hundred dollars planting pines, only to find their pine plantation destroyed in a short time, and all the landowner's time and money wasted."

"If landowners suspect town ant colonies on their property, they should contact a Texas Forest Service forester for an inspection of the site prior to making plans for planting pine seedlings."

"Mirex," a chemical previously used to control town ants, has been banned, so there is no control measure available at the present time. Experiments are being conducted by the Texas Forest Service's Pest Control Section in Lufkin on a registered, granular insecticide for tree ants, called "Aztec." However, to date there is no conclusive evidence that the chemical will be effective against town ants.

Subscribe To The Booster

Jarrott's PHARMACY
FOR PRESCRIPTION AND ALL YOUR DRUG STORE NEEDS

Hallmark Christmas CARDS
JEWELRY

Prince Gardner CROSS
JEWELRY
JEWELRY SINCE 1898

CHAPS **Russell Stover CANDIES**
by Ralph Lauren Jovan

Perfumes Gift Sets
Charlie-Jontue-Sophia
Chanel No. 5-Emeraude
Chantilly-Scoundrel
205 S. Magnolia
Woodville, Texas 75979
PHONE 283-2550

PRESENTS McClure's SPECIAL MICROWAVE COOKING SEMINAR "HOLIDAY COOKING"

Thursday Dec. 4th Home Economic Dept. at Woodville High School 7 till 9 p.m.
Mary Beth will be at McClure Furniture Sat. Dec. 6th 11 to 3, to answer questions about the new Amana MR 1000 Range plus Microwave Oven

FEATURING AMANA HOME ECONOMIST MARY BETH CYVAS

THIS NOTED MICROWAVE COOKING EXPERT RETURNS TO WOODVILLE TO SHOW YOU HOW TO COOK THOSE FESTIVE HOLIDAY DISHES FASTER AND EASIER IN YOUR MICROWAVE OVEN. FIND OUT HOW YOUR FAVORITE HOLIDAY FOOD CAN BE COOKED DELICIOUSLY AND MICROWAVE FAST!

DON'T MISS THIS VERY SPECIAL COOKING SEMINAR!



SEE THE AMAZING AMANA MICROWAVE CONVECTION OVEN IN ACTION DURING THIS SPECIAL SEMINAR! FOUR GREAT WAYS TO COOK

- MICROWAVE SPEED AND EFFICIENCY
- CONVECTION COOKING FOR CRISPY GOLDEN BROWN FOODS THAT ARE MOIST AND JUICY
- COMBINATION COOKING USING MICROWAVE SPEED AND CONVECTION BROWNING
- DEHYDRATING-A GREAT WAY TO COOK AND PRESERVE FOODS FOR LATER USE AND EATING

SEE THE FULL AMANA RADARANGE LINE AT McClure's
DON'T MISS THIS SPECIAL MICROWAVE COOKING SEMINAR...BE THERE.
N. Magnolia 283-2519 McClure's

Fall Is Tree Planting Time

Fall is the season for trees to lose leaves, but it's also the time to set out new trees. Fall is the best time to plant trees because their root systems have time to develop and become well established before top growth begins in the spring. Plant only container-grown or balled and burlapped trees during the fall as bare-root trees do not transplant readily until January or February. Handle the tree by the trunk, not the branches. Choose trees that will adapt to the area and that will provide the desired landscape.

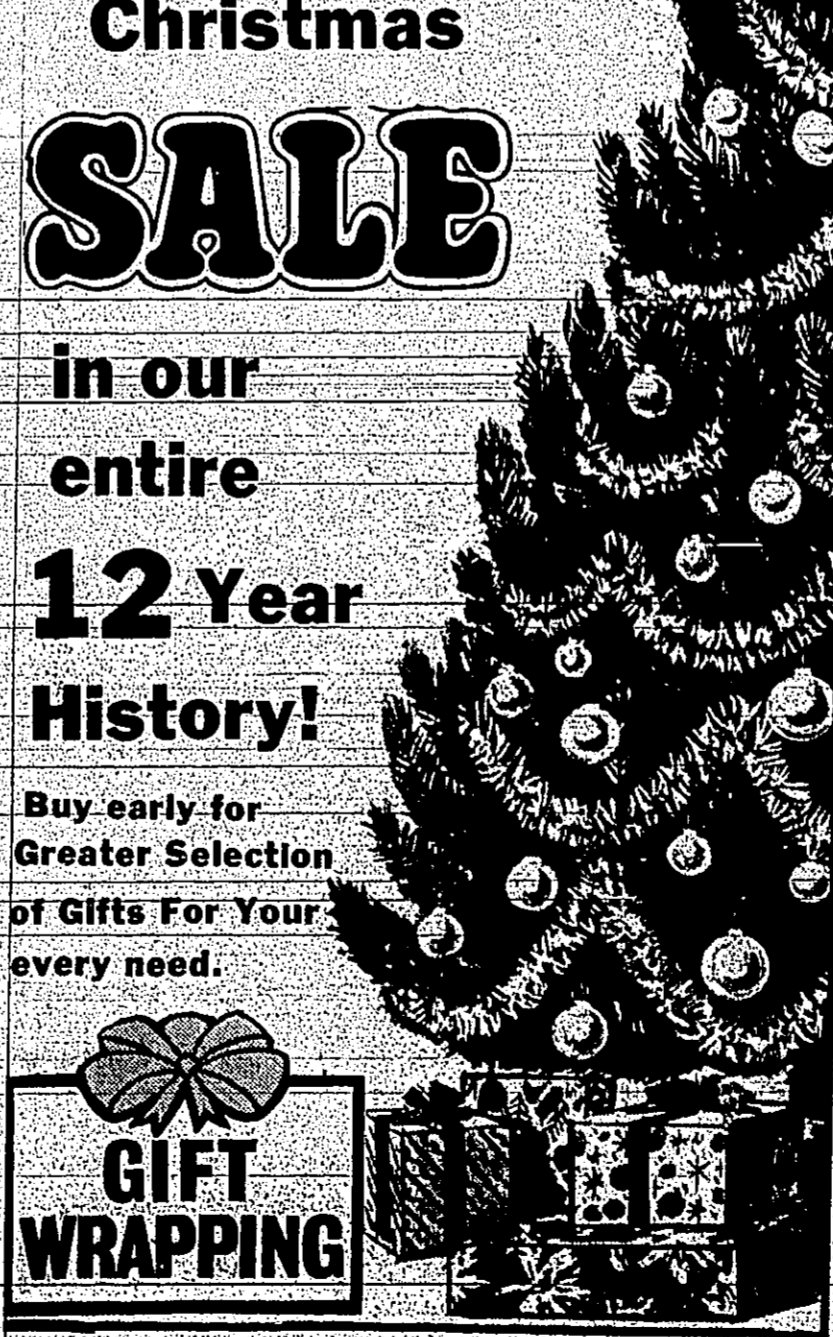
BEST DEAL IN TYLER COUNTY
LOWSTAR FERTILIZER
16-8-8
16-9-8
16-10-8

DAVIS FOOD MARKET
Warren, Tx 547-3339

BOB'S 1010 West Bluff 283-3073
PRESCRIPTION SHOP IS HAVING
"The Largest Christmas SALE" in our entire 12 Year History!

Buy early for Greater Selection of Gifts For Your every need.

GIFT WRAPPING



10 POINT BUCK—Charlie McGinty, a former Woodville High Coach, revisited Tyler County last week and on Thanksgiving Day dropped this beautiful 10 point buck. McGinty currently lives in Tyler, Texas.

Give Old Brass That New Look

COLLEGE STATION—Make brass look new by following a few cleaning suggestions, advises Mary Lou Rowland, a housing and home furnishings specialist. Scrub with very fine steel wool and full-strength household ammonia, rinse and then polish with brass polish, she says. Mrs. Rowland is with the Texas Agricultural Extension Service, The Texas A&M University.

Used Car Savvy Can Add Up

COLLEGE STATION—Used-car savvy can add up to dollars in your pocket, says Bonnie Pierron, a family resource management specialist. A used car will require a smaller investment of capital, a smaller down payment and will have a lower depreciation rate than a new car if you are choosy, she explains.

Mrs. Pierron is with the Texas Agricultural Extension Service, The Texas A&M University System. **USED-CAR SHOPPING**—Do your homework first. Read the classified ads and a current book of wholesale prices, she recommends. A critical eye will give clues to the car's history and approximate worth. Check the general appearance of the car, then check the paint and chrome for signs of repainting and accidents. Also, check ripples and dents, door, hood and trunk alignment, rusted and "silly" corrosion and tire wear.

Inspect the engine for signs of oil leaks and for the oil pan for oil relating overall appearance and mileage. After going over the car, take it out for a road test. Never buy an automobile without one, the specialist advises.

Check the acceleration, the clutch on a manual transmission, the automatic transmission, steering and brakes. Beware of any noises for which you cannot locate the source. **LEGAL ADVICE**—Used-car buyers in the United States also benefit from legislation which helps them determine if a car has an uncorrected defect affecting its reliability or safety, she continues. To find out, write the manufacturer or call the National Highway Traffic Safety Administration's Auto-Safety Hotline and give the following information: the car's make, model, year, body type and vehicle identification number.

Continental U.S. residents can call the hotline toll-free at 800-474-9393. Residents of Alaska, Hawaii and Washington, D.C. call 200-426-0123. **ODOMETER LAW**—Another advantage for the used-car buyer is the odometer law, Mrs. Pierron says.

Applying a clear-spray-on lacquer will prevent future tarnishing, but you'll get a prettier, softer look if you finish the tray with brass polish. If brass is rusted or rusting, it indicates that it is plated brass and probably needs refinishing at a plating shop; the points on the tray will prevent future tarnishing.

Near the seashore, if brass tarnishes only a few days after it is polished, wipe with a very thin film of gasoline or gun oil after polishing. This will prevent tarnishing for several weeks, Mrs. Rowland adds.

Jeff Ratcliff Agent
P.O. Box 399
Woodville, Texas 75979
Bus: (713)283-3724
Res: (713)283-2610

FARMERS INSURANCE GROUP

Advertise In The Booster

REVIVAL Worship Center Outreach
Hwy 287
Chester, Texas
Gospel Singers Fellowship
God's Word
Speaker!!
Dan Scheill
Dick Scheill
December 10, 11, 12, 13, 14 Time 7:00
EVERY ONE WELCOME!!



WE CAN SAVE YOU MONEY WITH OUR INSULATION
Our experienced installers will give you a thorough cover in all the hard to get places. We can also top over your present insulation to save you more heat.

CALL FOR A FREE ESTIMATE
Lawrence Rainey-Owner
WATTSCO SERVICES, INC.
109 E. Bluff Woodville
283-3696

QUALITY SAVINGS!
OUR WAY IS YOUR WAY...
Fairway FOODS

You Could Win FREE Groceries!
How Are You At Prices?
Come by and inspect the New Ford Escort Wagon filled with bags of Groceries at Fairway Foods.



Fill out an entry card with your Name, Address and Phone No. Also put the amount of your guess of the purchase price of the groceries.
One guess per visit. Please. Must be at least 17 years of age. Employees and immediate family members of Fairway Foods and Knapp Ford are not eligible to play.
Duplicated guesses will be drawn. Escort Wagon furnished by Knapp Ford. Be sure to Check out the fine line of Ford products at KNAPP Ford of Woodville.


HERE is where to find all of your **HUNTING NEEDS**

- Ammo
- Guns
- Hunting Gear

HUNTING SAFETY TIP #1
Treat every gun with the respect due a loaded gun. This is the cardinal rule of gun safety.

WESTERN AUTO

283-2134



RED WING

HUNTING SAFETY TIP #10
Do not use gunpowder and alcohol.

Best & Co.

210 S. Magnolia 283-5252



East Texas

Land Co.

HUNTING SAFETY TIP #11
Never shoot at a fal, hawk, peregrine or the surface of water.

210 S. Magnolia 283-5252

GMC

TRUCKS ARE WHAT WE'RE ALL ABOUT

GMC WIDESIDE POWER



• New aerodynamic styling
• 6 1/2 or 8 foot cargo box
• Double-wall construction
• Steel-belted radial tires, standard
• New "elastic" warranty


DEMO SALE \$8719.

LIST: \$9703 GS.

HUNTING SAFETY TIP #9
Never climb a tree or a fence with a loaded gun.

A & M Motor Co.

605 S. Magnolia 283-2534



Observe The **10 Commandments** Of Hunting Safety

HUNTING SAFETY TIP #2
Going carried into camp or home must always be unloaded. Taken down or have actions open, guns always should be unloaded until reaching the shooting area.

We don't just work here... we live here.

ST REGIS

Hunters... Make This Year's Buck Pay Off!!

ENTER

THE TYLER COUNTY BOOSTER

Best Rack Contest

How to measure your Contest Winner:

- Number of points times two
- Length of both horns from base to tip around outside corners
- Spread at widest point

Each inch equals 1 point! Person with highest total points wins first place. (Antler point must be 1/2" to qualify)


PRIZES

- 1st 30-30 Rifle
- 2nd Pair of Red Wing Hunting Boots
- 3rd Dinner for two at the Pickett House

GET ALL 3...

- TRI-FOCUS PICTURE TUBE
- TRIPLE PLUS CHASSIS
- ELECTRONIC POWER SENTRY VOLTAGE REGULATING SYSTEM

IN NEW **ZENITH** 19" COMPACT COLOR TV



HUNTING SAFETY TIP #7
Unattended guns should be unloaded, gun and ammunition should be stored safely beyond reach of children and careless adults.

McClure Furniture
283-2519 305 N. Magnolia


CHOOSE ZENITH, America's Most Colorful TV!

WHITE TAIL RIDGE LAKE ESTATES INC.



HUNTING SAFETY TIP #3
Always be sure that the barrel and action are clear of obstacles.

Business office 327-3194



PRIZES

- 1st 30-30 Rifle
- 2nd Pair of Red Wing Hunting Boots
- 3rd Dinner for two at the Pickett House


Remember To Practice Forest Conservation While Hunting

HUNTING SAFETY TIP #8
Never point a gun at anything you do not want to shoot.

Temple-Eastex

The **PICKETT HOUSE**

In Heritage Garden Village
East Texas Cooking Served Family Style
Chicken & Dumplings Served Every Day




HUNTING SAFETY TIP #4
Be sure of your target before you pull the trigger.

283-3946

CITIZENS STATE BANK

"Give Us A Chance To Say Yes"



HUNTING SAFETY TIP #4
Always carry your gun so that you can control the direction of the muzzle, even if you stumble. Keep the safety on until you are ready to shoot.

EACH DEPOSITOR INSURED TO \$100,000

FDIC 283-2561

FEDERAL DEPOSIT INSURANCE CORPORATION



Bring your deer by the Booster office Monday through Saturday for measurement. On Sunday Call 283-2082

Contest Closes Last Day Of Deer Season

Advertise In The Booster

Quench Hour!

From 3:00 to 4:00 or 8:00 to 9:00

Any Soft Drink

1/2 Price

SONIC RESTAURANT

Ramblin' Round Rockland

By ALONA FREELAND

Christmas just over, from the town of Rockland and here's the story for this year.

Visitors with the Devis for Thanksgiving were son Tom Devis wife Pauly, daughter Karan, and Gladys, of Huntville, Mrs. Hazel Sanders, and Fern Dean and J.P. Dean, all of Colmesville.

Thanksgiving holiday visitors with Mr. and Mrs. Ben Reppond and family were Mr. and Mrs. W.J. Ankrom and son Russell of Jacinto City, Jassette Brown and Bill Barnes of Lufkin, Linnie Watkins of Rockland, Glenda Lov and son David Lynn of Houston, Randy Durham of Woodville, Mr. and Mrs. Wayne Reppond and family of Dallas, and David Ellodge of Houston.

Visitors with Mrs. Gladys Jeanes on Thanksgiving Day were Mr. and Mrs. Grady Jeanes, Jr. of Palestine.

Mr. and Mrs. Robert Jeanes, Renea and her friend Wayne of Spring Hill, and Mrs. M. Elliott and Danielle and Keith Jeanes of Spring, all of Rockland, were in the Force of Kirbyville.

Mr. and Mrs. L.D. Brooks and Wanda have been in the area for four years and, in fact, with Mrs. Janice McAllister, in Woodville for Thanksgiving dinner.

We have had so many wonderful comments on our column throughout these years and many letters, as well—some as far away as Little Rock, Arkansas, where an avid reader of ours is in a Veteran's Hospital.

It is with regret that Mrs. Kenn—and yours truly leave the community of Rockland but the Lord has seen fit to call us to another area of service. We will begin our ministry at the First Baptist Church at Double Creek this week. We do leave behind our friends at Rockland with much regret but we are looking forward to another rewarding service in the place where we have been called to serve.

This past week the Baptist Church here at Rockland has been the scene of some wonderful service. On Wednesday, the church gave a

CHIROPRACTOR

Dr. H. Herrington 283-7312

Monday-Friday 9:12-5

OPTOMETRIST

Dr. Gary Tatum 283-3011

Wednesday 9:12-5 Friday 9-12

419 So. Magnolia-Woodville

SOUTHEAST TEXAS SAVINGS AND LOAN ASSOCIATION

Serving all of Southeast Texas

All accounts insured to \$100,000

Southeast Texas Savings & Loan Association

400 W. Bluff, Woodville, Texas

Branches in Kountze & Livingston 283-3747

Member of: Federal Savings and Loan Insurance Corporation, Federal Home Loan Bank System, United States Savings and Loan League, Texas Savings and Loan League

Supervised by: Texas State Savings and Loan Department, Federal Home Loan Bank Board



Parker's Holiday Sale Continues...

- Ladies Coats, Sportswear, & Dresses... 15%-25% OFF
- Ladies Jeans... 50% OFF
- Men's Suits & Sportcoats 20%-50% OFF
- Junior Sportswear... 15%-20% OFF
- Shoes: Men's 15%-50% OFF Women's - Childrens
- Boyswear & Girlswear... 15%-25% OFF
- Gift Items... 50% OFF

Parker's

Lufkin Mall 10-9 Downtown 9:30-5:30

Perfecto Cleaners

305 W. Bluff 283-2518

Watch For Our Weekly Specials December 4-11 Ladies 2 Pc. Suits \$250

Try Our New Service

Public Notice

All interested persons are hereby notified that the budget for the fiscal year 1981 of Tyler County will be adopted December 12, 1980. The budget and documentation necessary to support the primary items below are available at the office of the County Auditor at the courthouse from 8:00 a.m. to 4:30 p.m. Monday through Friday.

Source	Amount
Property Taxes	\$ 974,781.00
Fees of Office	393,029.00
Fines	40,640.00
Income From Other Governments	76,000.00
Federal Revenue Sharing	193,415.00
Miscellaneous	41,133.00
Total	1,708,978.00

Activity	Expenditures		Total
	Rev. Sharing Funds	Other Funds	
Law Enforcement	\$ 30,000.00	\$ 238,581.00	\$ 268,581.00
General Administration	153,911.00	153,911.00	307,822.00
Judicial Administration	4,270.00	169,796.00	174,066.00
Legal Administration	...	31,101.00	31,101.00
Financial Administration	16,500.00	179,665.00	196,165.00
Health & Welfare	12,000.00	72,069.00	84,069.00
Conservation	750.00	18,991.00	19,741.00
Public Facilities	16,700.00	50,153.00	66,853.00
Road Transportation	77,294.00	650,171.00	727,465.00
Sanitation	30,385.00	17,687.00	48,072.00
Capital Outlay	4,000.00	...	4,000.00
Contingency	1,513.00	...	1,513.00
Total Expenditures	\$ 1,193,412.00	\$1,582,165.00	\$1,715,577.00

Chemical Weed Control Pays Along County Roads

COLLEGE STATION - Controlling weeds and brush along country road rights-of-way is an expensive but necessary practice. However, use of herbicides can reduce costs drastically. Assistance by weed specialists of the Texas

Agricultural Extension Service to county commissioners in Wharton and Washington counties bears this out. When comparing mechanical methods of weed and brush control with the use of chemicals, savings ranged from more than \$1,000 in

a Washington County precinct to more than \$62,000 in a precinct in Wharton County. Another Wharton County precinct saved almost \$29,000. These savings resulted mainly from reduced labor and fuel use when only herbicides were used.

Treated areas in Wharton County included 1,212 acres in one precinct and 1,100 acres in another. A total of 199 acres of rights-of-way were treated in Washington County. Dr. Art Gerlow, Extension area economist located in Bryan, dis-

cussed economic analysis of weed and brush control at the First Annual Gulf Coast County Road Rights-of-Way Weed and Brush Control Conference held recently in Wharton. He stated

that variable costs, as well as labor, must be figured in the total cost of weed and brush control programs. Mechanical methods included shredding, mowing, grading and using a back-

hoe. Herbicides used were MSMA, Nalco-Trol and 2,4-D. Major goals of the weed and brush control program in Wharton and Washington counties were to reduce, shred-

ding and other mechanical operations to effectively control Johnson grass and weeds; to improve water runoff and to improve visibility at bridges, intersections and curves along roads.

NEW TOOL
AUCTION
Monday, Dec. 8
7:00 P.M.
Lions Club Hall
Woodville, Texas
SEE PAGE 10 FOR
COMPLETE LISTING!

TOM'S MEAT MARKET

1/2 MILE South Hwy 92 SPURGER, TX 429-3690

ANNIVERSARY SALE

4 BIG YEARS OF SERVICE

THANKS TO OUR MANY FINE CUSTOMERS!!
WE SPECIALIZE IN

- CHOICE CUTS TO ORDER**
- FRESH GROUND BEEF** LB ONLY \$1.19
- ALL MEAT USDA GOOD AND BETTER**
- CROWN OR CHUCK ROAST** LB ONLY \$1.49
- MEXICAN HOT LINKS** 89¢ LB
- BEEF BRISKET STEW MEAT** 89¢ LB
- JAY-DON PURE PORK SMOKED SAUSAGE** \$1.89 LB
- MARKET STYLE SLAB BACON** 99¢ LB BY THE PRICE
- COUNTRY STYLE PORK BACK BONE** \$1.49 LB
- FRESH PORK ROAST** 89¢ LB
- FIRST CUT PORK CHOPS** \$1.29 LB
- WHOLE FRYERS** 59¢ LB ONLY
- MIDDLE CUT PORK CHOPS** \$1.49 LB
- FRESH LEAN PORK RIBS** 89¢ LB
- OUR OWN MARKET MADE PAN SAUSAGE** \$1.49 LB HOT 200+ AVERAGE
- 1/2 CALF CUT WRAPPED FROZEN** \$1.30 LB BY APPOINTMENT 100+ AVG
- HIND QUARTERS CUT WRAPPED FROZEN** \$1.69 LB BY APPOINTMENT 100+ AVG
- FORE QUARTERS CUT WRAPPED FROZEN** \$1.29 LB BY APPOINTMENT
- WE GLADLY ACCEPT USDA FOOD STAMPS!!**

- LARGE LOAF BIG VALUE BREAD** 49¢
- STORE HOURS**
MON-FRI 5AM-7PM
SAT 7AM-7PM
SUN 7AM-2PM
- GALLON JUG PRESTON MILK** 4% \$1.99 = GAL
- SPECIALS GOOD WEDNESDAY DEC 3RD THRU TUESDAY DEC 9TH**
- 1/2 GALLON BORDENS ICE CREAM** \$1.69
- WE NOW SELL GASOLINE**
- SIX-PACK QUART COKES** \$1.89
- ASSORTED FLAVORS LARG-EGGS** 79¢
- Reg PRICE \$1.09 BUY ONE GET ONE FREE**

WE RESERVE THE RIGHT TO LIMIT QUANTITIES

Announcing

SAVON DRUGS

New Location
At
304 South Magnolia
(Old White's Auto Building)



Thanks to your enthusiastic support, we now have twice as much space with the widest aisles in Tyler County. Check our Xmas circular for super buys on all your Christmas needs.

