

Serving Tyler County
Since 1930
3 Sections 20 Pages

THE TYLER COUNTY BOOSTER

Thursday, May 14, 1981
Woodville, Texas, 75979
Vol. 51 No. 20 20¢

Blake Car/Road Bill Passes

AUSTIN -- Senate Bill 150, co-sponsored by Senators Roy Blake of Nacogdoches and John Traeger of Seguin, was passed by the Texas Senate today. The bill doubles the amount of motor vehicle registration receipts which counties may retain to be deposited in the County Road and Bridge Fund.

Blake explained that under existing law the counties may retain the first \$50,000 of license receipts collected and 50 percent of the receipts in excess of \$50,000 until a total of \$175,000 has been collected and deposited in the fund. Under the Blake-Traeger bill, the first \$175,000 would be retained and half the receipts in excess of \$175,000 until the total retained and collected had reached a total of \$350,000.

"All the counties in my district have been strapped for road and bridge funds, and I have worked to secure this increase in funding," Blake said, "and along with the restoration of Lateral Road Funding which I also worked to pass earlier, most counties in Texas should receive some appreciable relief," he added.

Senate Bill 150, which enjoys the support of the Texas Association of Counties, would be financed by a five dollar increase in the motor vehicle registration fee of vehicles weighing less than 3,500 pounds.



MOUSED OUT -- This familiar Walt Disney figure entered the **Booster Friday** after first placing a nickel in the parking meter out front which was broken at the time and reading "violation." Nonetheless, Mickey Mouse will be glad to know that the Woodville downtown parking meters will now be "hooded" for the next 60 days while city police enforce a 2-hour parking limit; cost \$10 to the violator! Mickey suggested the City simply donate the meters to Disney World where they could be more profitably used to guard Sleeping Beauty's Enchanted Castle.

For 120 Days

Council To Study GSU Rate Request

By AMY WHITE

Gulf States Representative Charles Bordenman proposed a 33.2 percent utilities rate increase to City Council Monday night at the regular monthly meeting.

The reason for the increase, according to Bordenman, is threefold: "inflation; high interest rates, and the rising cost of generating electricity." Council agreed to suspend a pending ordinance for the increase while setting a 120-day study period.

Don Force of Jasper appeared before the council Monday night to ask the council for help in running a water line to his proposed new residence located one mile south of the Hwy 69 city limits sign. City manager Walt Davis said the city might be able to participate in the line installation if Force agreed to pay for the pipe itself. Davis told Force that he would investigate the costs and report back to him soon.

Council agreed to transfer \$79,200

out of the city sidewalk fund and put \$60,000 into the park site development fund and \$19,200 into the housing rehabilitation fund. The funds were not being used efficiently and, according to City Planner Dave Waxman, it was thought to be in the city's best interest to transfer the funds so that "better use could be made of them."

Mayor Doug Tolbert was granted the authorization to sign the grant application for a new water well and other associated equipment. The grant is under the Urban Development Action Community Grant Program.

The subject of parking meters and permits was approached once again, having been discussed previously with Chief of Police Grady Ray and other interested merchants and individuals of the community. It was recommended by Chief Ray to cover the parking meters for a period of 60 days in which there would be a strictly enforced parking limit of two hours with a \$10 fine for any violation of this provision. Council agreed to this for a trial basis.

Due to the rising cost of energy the city is being forced to raise the water and sewer rates effective in June. The rate for residential water will go from \$5 to \$6; residential sewer from \$4 to \$5 and commercial sewer from \$5 to \$6.

An amendment to the city's current ordinance regarding the use of intoxicating beverages within the city

limits added that "It is illegal to have alcoholic beverages on property owned or leased by the city of Woodville."

The City is going to have to flush the water lines soon, according to City Manager Walt Davis, who said, "This job has to be done and can't be put off much longer." Davis added, "There is really no good time of day to do this but it must be done."

Davis mentioned that it would probably be done on a weekend. Council agreed that Davis should appoint someone to attend the Natural Gas School offered in Nacogdoches on May 27-28. It was also recommended that the City should join the Texas Gas Association.

An analysis of the City's proposed park site was given by Wayne Stevenson of Jasper. The total land area is 6.5 acres, which is made up of two parcels, one which is 2.2 acres and the other which is 4.174 acres. This land was previously occupied by the Woodville School District. The location is where the Middle School burned down.

Stevenson reported that "You can seldom find land with so much frontage," and that he is unable to find any land comparable to it in the Woodville area. He estimated a total appraisal value of \$86,000.

The City has applied for six summer youths to work for the City in the coming months. If obtained, they will be working with the Street Department doing odd jobs.

Look For

Graduates

1981

in next weeks
BOOSTER



Latta Submits Petition

Backed up by several supporters from the Ivanhoe Community, Tommy Latta was again unsuccessful Monday in his attempt to get a "qualified" appointment to a vacant Constable position created when Jack Burns resigned several months ago, to accept a deputy position in the Tyler County Sheriff's office.

Latta reinforced his position Monday when he presented the court with a petition bearing 150 names of Precinct 1 individuals who reportedly, he said, "want to see him in that position."

Latta, who has said earlier that he has written Commissioner Precinct 1 Maxie Riley for his endorsement but has gotten no response. Riley had no comment during Latta's request for a court position on the matter Monday.

Latta came to the court asking for a legal interpretation from County Attorney Joe Smith, who said he'd have to study the court's requirement but wasn't asked until Monday to study that question.

Several friends of Latta have said that they feel the court is prejudiced against Latta receiving the office.



Tommy Latta

"But the court won't say why. Our candidate lost the race to Burns in a runoff by only 62 votes. Why won't they give him the go-ahead for the job?"

County Judge Allen Sturrock asked the court if there were any further questions before the court moved onto the next agenda topic. Sturrock has said earlier that a similar predicament exists in San Augustine County. "And they haven't appointed one yet."

Doucette Homecoming Is Sunday May 17

The Old Union Church at Doucette will be the site of the 17th annual homecoming celebration on Sunday, May 17, 1981. A Texas-style barbecue with all the trimmings will be held, according to Mr. and Mrs. Durwood Ling, activities chairman.

The Building Committee announced last week that it has contracted for the repair and replacement of the three large triple windows in the building. Also, it was announced that the steps would be replaced with original type wooden steps. The material for the steps was donated by Mr. and Mrs. George Brodnax of Conroe.

Sunday the old church bell will ring for registration at 11 a.m. and lunch will be served at noon.

All present and former residents of Doucette are invited to the homecoming.

Doucette was a thriving lumber town in the twenties and early thirties with quality lumber products being shipped around the globe. The Long Rail Lumber Co. Mill closed operation



JUDICIAL TEMPERMENT??? -- Could this be Todd Stafford, senior at Woodville High, as the decision-making, sentence-giving temperamental judge? From the look on his face he would seem to be having a good time of it. Todd along with 79 other senior government students participated in a mock murder trial Wednesday, May 6 in the high school library under the direction of Mrs. Becky Jinnette, government teacher. The jury found the defendant not guilty on the basis of insufficient evidence so Judge Stafford was unable to use his abundant wisdom in giving out a sentence. Prior to the trial the students were able to sit in on a civil case at the County Courthouse. It should be noted that the judge's father is local attorney Harry Stafford.



BURNS POT -- Tyler County Sheriff Leon Fowler is shown Friday, destroying some alleged marijuana recovered from an all-day tour of Tyler County which resulted in a large take from growers around the county. Fowler is shown dumping the weed into flames at the County dump. According to Chief Investigator B. J. Vardeman, "It was more practical to just go and harvest the stuff rather than try to stake out every patch. We just haven't got the time for that."

Barlow Delivers Perfect Game

Woodville senior Ricky Barlow of the Woodville Eagles continued to amaze fans and put to shame opposing teams' big bats. In last Thursday's game Barlow struck out 19 Kirbyville Wildcats and led Woodville to a 2-1 victory.

In Tuesday's game, this week Barlow stole the show by pitching a 1-0 shutout against the Hemphill Indians with a 7-0 win. Barlow has been stalked in the past few days by cops from several of Texas' major universities.



Ricky Barlow

PTO Changes Meeting

Colmesneil PTO has Tuesday of each month changed meeting times. The next meeting will be at 3:30 p.m. in the high school. Elections will be held and awards handed out.

Additions To The Texas Memorial Wall Of Memories

The names listed here are now being processed for the Wall of Memories. If you wish to add a memorial to any of the above names, you can do so by calling 283-7328. The cost is a \$10.00 donation to the Tyler County Heritage Society. You will be billed later. Miss Anna Belle Causey

Students Present Recital

Students from Nova's Guitar School will be presenting a recital for parents and friends on Saturday, May 16 at 2 p.m. in the Fellowship Hall of the First Baptist Church in Woodville.

Visits With Family

Mrs. Nellie Gentry, Mrs. James Woodville, Mrs. Robert Woodville, Mrs. Helen Woodville, Mrs. Mary Tucker, Mrs. Helen Woodville, and Mrs. Dick Gregory were in the city for a visit.

Sturrock Elected To Society

Darryl K. Sturrock, 3rd, has been elected to the National Honor Society, battling over 400 Darryl graduates from the son of Marie Sturrock High School, Rust, Sturrock and the grand Texas this year. He is son of Mr. and Mrs. E.A. Sturrock.

Social Postponed

The Woodville Little Theatre's Spring Social, May 16, will be postponed until further notice.

Green Graduates

ARMY AND AIR course learned how to FORGE A HOPEFUL FUTURE. The graduates of the Green course, which is a two-day course, were held at the Woodville High School.

Convention Attended

Two Woodville realtors, Fortenberry and Fortenberry, received a letter of appreciation for their service to the community. They attended the 1981 company's Top club agency convention of Agents with Southwestern Life Insurance Company.

Obituaries

VERA WILKINSON DAVIS. Funeral services for Vera Wilkinson Davis, age 82, of Colmesneil, will be held at 2:00 p.m. at the Chapel of Edwards Funeral Home, Lubbock, Texas.

Prize Performance

The Woodville Sixth Grade Junior High and High School Bands performed at Woodville's Annual Spring Band Concert on Monday, May 11, at the Woodville High Auditorium.

Revival Begins

Revival Services begin Wednesday, May 13 and continue through Sunday, May 17, at the 17th at First Baptist Church, Warren.

Lions Hold Barbeque

Fred Lions Club will have their annual barbeque on Saturday, May 16, on Hwy. 92 in Fred in the sandhills. Fred Lions have the reputation of being the best barbeque in the area.

Building beyond city sewers?

SELECT THE HOME SEWAGE SYSTEM WITH THE LONGEST WARRANTY IN THE INDUSTRY! Field-Tested • Odorless • 30 Month Limited Warranty • Economical • Available in 12" and 18" diameters • Dependable Service • Handles All Modern Appliances • NSF Seal of Acceptance • Completely Obsolete the Septic Tank • Jet Waste Water Control • C. Grady Holtermann • 283-3727

Fairview Baptist Church

Bro. Walter Sherry, pastor. Sunday School 9:45 a.m.; Morning Worship 11:00 a.m.; Church Training 6:00 p.m.; Thursday G.A. and Adonai 4 p.m.

Reech Creek Baptist Church

E.D. Holland, pastor. Sunday School 10 a.m.; Morning Worship 11:30 a.m.; Evening Worship 7:00 p.m.

True Vine Baptist Church

1 mile East of Dora, Sunday School 9:45 a.m.; Morning Worship 11 a.m.; Sunday School 5:30 p.m.; Monday School 4 p.m.; Tuesday W.M.C. 6:30 p.m.; Wednesday Prayer Meeting 7 p.m.

Bethany Baptist Church

Colmesneil, Texas. Bethany Baptist Church, Colmesneil, Texas. Bethany Baptist Church, Colmesneil, Texas. Bethany Baptist Church, Colmesneil, Texas.

Rocky Springs Baptist Church

Jack Myrland, pastor. Sunday School 9:45 a.m.; Morning Worship 11 a.m.; Training Union 5 p.m.; Evening Worship 7 p.m.; Wednesday Prayer Meeting 7:30 p.m.

First Baptist Church

Warren, Kenneth Cauley, pastor. Sunday School 9:45 a.m.; Morning Worship 11 a.m.; Training Union 5 p.m.; Evening Worship 7 p.m.; Wednesday Prayer Meeting 7:30 p.m.

New Philon Baptist Church

West of Woodville, Dr. John S. Scales, pastor. Sunday School 9:45 a.m.; Morning Worship 11 a.m.; Evening Worship 7 p.m.

Rockland Baptist Church

J.B. Dean, Music Director. Sunday School 10:00 a.m.; Morning Worship 11:00 a.m.; Evening Worship 7:00 p.m.; Wednesday Prayer Meeting 7:30 p.m.

Pleasant Valley Baptist Church

C.S. Reed, pastor. Sunday School 10:30 a.m.; Morning Worship 11:30 a.m.; Evening Worship 7:30 p.m.; Wednesday Prayer Meeting 7:30 p.m.

First Shiloh Baptist Church

Services 1st and 3rd Sundays of each month. Sunday School 10 a.m.; Prayer Meeting each Wednesday at 7 p.m.; Rev. Ernest Martin, pastor.

Herndon Baptist Church

FM Road 2827.5 miles south of Warren at 9:45 a.m.; Morning Worship 11 a.m.; Sunday School 9:30 a.m.; Evening Worship 7 p.m.; Rev. Ernest Martin, pastor.

Calvary Baptist Church

Rev. W. L. Lovin, pastor. Sunday School 9:45 a.m.; Morning Worship 11 a.m.; Training Union 6:00 p.m.; Evening Worship 7 p.m.; Wednesday Prayer Meeting 7 p.m.

First Baptist Church of Hillcrest

Henry Sherrill, pastor. Sunday School 9:45 a.m.; Morning Worship 11 a.m.; Training Union 6:00 p.m.; Evening Worship 7:00 p.m.; Wednesday Prayer Meeting 7:00 p.m.

Ebenezer Baptist Church

Sunday School 10 a.m.; Morning Worship 11:00 a.m.; Evening Worship 7:00 p.m.; Pastor Lloyd Mabry.

Pleasant Hill Baptist Church

Flint, Texas. Services Sunday School 10 a.m.; Morning Worship 11 a.m.; Evening Worship 7 p.m.; Pastor Raymond L. Baker.

Caney Creek Baptist Church

Chas. G. Standley, pastor. Sunday School 10 a.m.; Morning Worship 11 a.m.; Church Training 6 p.m.; Evening Worship 7 p.m.; Wednesday Prayer Meeting 7 p.m.

Ark Grove Baptist Church

Colmesneil, Rev. George Frank, pastor. Sunday School 10 a.m.; Morning Worship 11 a.m.; Evening Worship 7 p.m.

Mount Nebo Baptist Church

FM Road 1943-13 miles past of Warren, Rev. W.C. Harper, pastor. Sunday School 10:30 a.m.; Morning Worship 11:00 a.m.; Evening Worship 7:00 p.m.; Wednesday Prayer Services 7:00 p.m.

Victory Baptist Church

Hwy 1746 Near FM 2892, Woodville, Rev. Tommy Walker, pastor. Sunday School 9:45 a.m.; Morning Worship 11:00 a.m.; Training Union 6:00 p.m.; Evening Worship 7:00 p.m.; Wednesday Prayer 7:00 p.m.

Jarrott's Pharmacy

283-2550 205 S. Magnolia North South West

Knapp Ford Sales, Inc.

Tom Knapp, Pres. 283-2526 104 Pine St. Res. Ph. 283-5310

Harrington Electric & Plumbing Service

Colmesneil

Woodville Inn

"Woodville's Finest" Noon Buffet Daily Everyone

Brookshire Bros.

Woodville

Woodville Convalescent Center

283-2555 102 N. Beach

Allison Chevrolet, Inc.

837-2244 Colmesneil

Southeast Texas Saving & Loan

Warren

Davis Food Market

547-9399 Warren

McClure Furniture

283-2519 Woodville

A & M Motor Co. Inc.

283-2534 Woodville

The Tyler County Booster

I.B. Best & Co. Clothing and Shoes for the Family

Grammer's Grocery

W. Bluff, Woodville 283-2520

Grammer's Grocery

W. Bluff, Woodville 283-2520

Grammer's Grocery

W. Bluff, Woodville 283-2520

Grammer's Grocery

W. Bluff, Woodville 283-2520

Grammer's Grocery

W. Bluff, Woodville 283-2520

Grammer's Grocery

W. Bluff, Woodville 283-2520

Grammer's Grocery

W. Bluff, Woodville 283-2520

Grammer's Grocery

W. Bluff, Woodville 283-2520

Grammer's Grocery

W. Bluff, Woodville 283-2520

Grammer's Grocery

W. Bluff, Woodville 283-2520

Grammer's Grocery

W. Bluff, Woodville 283-2520

Grammer's Grocery

W. Bluff, Woodville 283-2520

Grammer's Grocery

W. Bluff, Woodville 283-2520

Grammer's Grocery

W. Bluff, Woodville 283-2520

Grammer's Grocery

W. Bluff, Woodville 283-2520

Grammer's Grocery

W. Bluff, Woodville 283-2520

Grammer's Grocery

W. Bluff, Woodville 283-2520

Grammer's Grocery

W. Bluff, Woodville 283-2520

Grammer's Grocery

W. Bluff, Woodville 283-2520

Grammer's Grocery

W. Bluff, Woodville 283-2520

Grammer's Grocery

W. Bluff, Woodville 283-2520

Grammer's Grocery

W. Bluff, Woodville 283-2520

Grammer's Grocery

W. Bluff, Woodville 283-2520

Grammer's Grocery

W. Bluff, Woodville 283-2520

Grammer's Grocery

W. Bluff, Woodville 283-2520

Grammer's Grocery

W. Bluff, Woodville 283-2520

Grammer's Grocery

W. Bluff, Woodville 283-2520

Grammer's Grocery

W. Bluff, Woodville 283-2520

Grammer's Grocery

W. Bluff, Woodville 283-2520

Grammer's Grocery

W. Bluff, Woodville 283-2520

Grammer's Grocery

W. Bluff, Woodville 283-2520

Grammer's Grocery

W. Bluff, Woodville 283-2520

Grammer's Grocery

W. Bluff, Woodville 283-2520

Grammer's Grocery

W. Bluff, Woodville 283-2520

Grammer's Grocery

W. Bluff, Woodville 283-2520

Grammer's Grocery

W. Bluff, Woodville 283-2520

Grammer's Grocery

W. Bluff, Woodville 283-2520

Grammer's Grocery

W. Bluff, Woodville 283-2520

Grammer's Grocery

W. Bluff, Woodville 283-2520

Grammer's Grocery

W. Bluff, Woodville 283-2520

Grammer's Grocery

W. Bluff, Woodville 283-2520

Grammer's Grocery

W. Bluff, Woodville 283-2520

Grammer's Grocery

W. Bluff, Woodville 283-2520

Grammer's Grocery

W. Bluff, Woodville 283-2520

Grammer's Grocery

W. Bluff, Woodville 283-2520

Grammer's Grocery

W. Bluff, Woodville 283-2520

Grammer's Grocery

W. Bluff, Woodville 283-2520

Grammer's Grocery

W. Bluff, Woodville 283-2520

Grammer's Grocery

W. Bluff, Woodville 283-2520

Grammer's Grocery

W. Bluff, Woodville 283-2520

Grammer's Grocery

W. Bluff, Woodville 283-2520

Grammer's Grocery

W. Bluff, Woodville 283-2520

Grammer's Grocery

W. Bluff, Woodville 283-2520

Grammer's Grocery

W. Bluff, Woodville 283-2520

Grammer's Grocery

W. Bluff, Woodville 283-2520

Grammer's Grocery

W. Bluff, Woodville 283-2520

Grammer's Grocery

W. Bluff, Woodville 283-2520

Grammer's Grocery

W. Bluff, Woodville 283-2520

Grammer's Grocery

W. Bluff, Woodville 283-2520

Grammer's Grocery

W. Bluff, Woodville 283-2520

Grammer's Grocery

W. Bluff, Woodville 283-2520

Grammer's Grocery

W. Bluff, Woodville 283-2520

Grammer's Grocery

W. Bluff, Woodville 283-2520

Grammer's Grocery

W. Bluff, Woodville 283-2520

Grammer's Grocery

W. Bluff, Woodville 283-2520

Grammer's Grocery

W. Bluff, Woodville 283-2520

Grammer's Grocery

W. Bluff, Woodville 283-2520

Grammer's Grocery

W. Bluff, Woodville 283-2520

Grammer's Grocery

W. Bluff, Woodville 283-2520

Grammer's Grocery

W. Bluff, Woodville 283-2520

Grammer's Grocery

W. Bluff, Woodville 283-2520

Grammer's Grocery

W. Bluff, Woodville 283-2520

Grammer's Grocery

W. Bluff, Woodville 283-2520

Grammer's Grocery

W. Bluff, Woodville 283-2520

Grammer's Grocery

W. Bluff, Woodville 283-2520

Grammer's Grocery

W. Bluff, Woodville 283-2520

Grammer's Grocery

W. Bluff, Woodville 283-2520

Grammer's Grocery

W. Bluff, Woodville 283-2520

Grammer's Grocery

W. Bluff, Woodville 283-2520

Grammer's Grocery

W. Bluff, Woodville 283-2520

Grammer's Grocery

W. Bluff, Woodville 283-2520

Grammer's Grocery

W. Bluff, Woodville 283-2520

Grammer's Grocery

W. Bluff, Woodville 283-2520

Grammer's Grocery

W. Bluff, Woodville 283-2520

Grammer's Grocery

W. Bluff, Woodville 283-2520

Grammer's Grocery

W. Bluff, Woodville 283-2520

Grammer's Grocery

W. Bluff, Woodville 283-2520

Grammer's Grocery

W. Bluff, Woodville 283-2520

Grammer's Grocery

W. Bluff, Woodville 283-2520

Grammer's Grocery

W. Bluff, Woodville 283-2520

Grammer's Grocery

W. Bluff, Woodville 283-2520

Grammer's Grocery

W. Bluff, Woodville 283-2520

Grammer's Grocery

W. Bluff, Woodville 283-2520

Grammer's Grocery

W. Bluff, Woodville 283-2520

Grammer's Grocery

W. Bluff, Woodville 283-2520

Grammer's Grocery

W. Bluff, Woodville 283-2520

Grammer's Grocery

W. Bluff, Woodville 283-2520

Grammer's Grocery

W. Bluff, Woodville 283-2520

Grammer's Grocery

W. Bluff, Woodville 283-2520

Grammer's Grocery

W. Bluff, Woodville 283-2520

Grammer's Grocery

W. Bluff, Woodville 283-2520

Grammer's Grocery

W. Bluff, Woodville 283-2520

Grammer's Grocery

W. Bluff, Woodville 283-2520

Grammer's Grocery

W. Bluff, Woodville 283-2520

Grammer's Grocery

W. Bluff, Woodville 283-2520

Grammer's Grocery

W. Bluff, Woodville 283-2520

Grammer's Grocery

W. Bluff, Woodville 283-2520

Grammer's Grocery

W. Bluff, Woodville 283-2520

Grammer's Grocery

W. Bluff, Woodville 283-2520

Grammer's Grocery

W. Bluff, Woodville 283-2520

Grammer's Grocery

W. Bluff, Woodville 283-2520

Grammer's Grocery

W. Bluff, Woodville 283-2520

Grammer's Grocery

W. Bluff, Woodville 283-2520

Grammer's Grocery

W. Bluff, Woodville 283-2520

Grammer's Grocery

W. Bluff, Woodville 283-2520

Grammer's Grocery

W. Bluff, Woodville 283-2520

Grammer's Grocery

W. Bluff, Woodville 283-2520

Grammer's Grocery

W. Bluff, Woodville 283-2520

Grammer's Grocery

W. Bluff, Woodville 283-2520

Grammer's Grocery

W. Bluff, Woodville 283-2520

Grammer's Grocery

W. Bluff, Woodville 283-2520

Grammer's Grocery

W. Bluff, Woodville 283-2520

Grammer's Grocery

W. Bluff, Woodville 283-2520

Grammer's Grocery

W. Bluff, Woodville 283-2520

Grammer's Grocery

W. Bluff, Woodville 283-2520

Grammer's Grocery

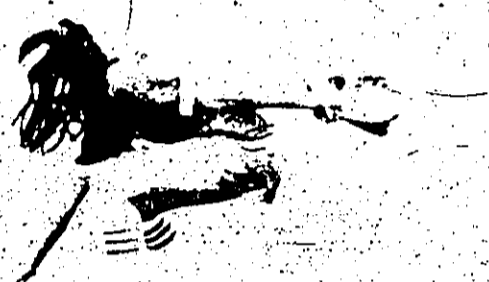
W. Bluff, Woodville 283-2520

Grammer's Grocery

W. Bluff, Woodville

League Growing Each Year

Area Girls Serious About Softball Play As Over 150 Turn Out For Two Month Activity



A quick grab and throw to first for a crucial out.

Over 150 girls in Tyler County suit up each year and hit the diamonds in four locations four nights a week throughout the months of May and June.

The Tyler County Girls' Softball League has initiated the use of fields in Spurger, Warren and Chester, as well as Woodville, in order to have more games each night, finishing as early as possible. Seven teams in the 8-10 age group, six in the 11-13 division, and two senior squads 14-up play for titles and trophies to be awarded at the end of the season.

Through the generosity of the Tyler County CB Club the girls' league now has the use of a concession stand at the Woodville diamonds, which are actually the old Kirby High athletic field. Progress is slowed on the construction of the new field across from the airport, due to the lack of a water hookup. Bids are being sought for construction of a well at that site, after which work can begin on grassing and a field house.

The girls' league will hold a Rain-out Day at the Woodville field Saturday, May 16. Games will begin at 9:30 a.m. and run until 4:45 involving almost every team. Team photos will be taken and the concession stand will be in operation, offering barbeque sandwiches and everything needed for feeding the family. Friends, relatives, and curious onlookers are welcome and guaranteed to be entertained with some unique ball playing.

*Photos
And
Text
By
Kerri
McCaffety*



Cindy Allison of the undefeated Eagle-ettes scores a run.



Lisa McCaffety swings at a "good one"



"Ah" The end of a hard game.



Glenda Tolar a valuable player for the Eagle-ettes smacks one for a base hit.



The game is over and the winning team is treated to refreshments at the concession stand.



The end of a hard game.



layer for the Eagle-ettes
r a bus hit.



winning team is treated
concession stand.



EIGHTH GRADE TRIP BREAK -- Sonia Gazzaway and Susan McCoy are shown having fun on a slide after a picnic lunch as part of their recent field trip to Beaumont.

Bulldog Grows

By VANICE HUNTER
and LENA SPURLOCK

"funnest" trip of the year!

PROM SUCCESSFUL

The 1981 Junior-Senior Prom turned out to be a success. The decorations consisted of blue and silver streamers with stars and other things on them. The tables were dressed nicely. The theme of the prom was "Always and Forever". The music consisted of rock, disco, country, some from the '50's and more. Tracy Collins was named King and Janice McNeal was named Queen. Good job Juniors and Mrs. Kitchens!!!

LAKE DAY PLANNED

The annual Lake Day has been planned for May 21. This is for the 5th grade through the 12th. Everyone is excited about the

STUDENTS AT STATE UIL

Mrs. Haralson and the State Speech Contestants left Thursday at noon for Austin and State Competition. Those who went were Tracy Collins and Jim Johnson and Marlene Hodges, who was in Calculation competition. Mr. and Mrs. Moffett took the girls Friday to Austin for State Track Events. Those who went were Janice and Janette McNeal, Sherri Collins, and Kathy Deason.

PTO FINAL MEETING OF YEAR

PTO met Tuesday night for the last meeting of the year. The program for the meeting was presented by grade four with Mary Freeman and Becky Rushing as

TWENTY DAYS AND COUNTING

YEAR IS ALMOST FINISHED. Another year full of memories to add to the collection.

Football, Basketball, Baseball, Track, Literary competition; all of these have provided accomplishments that contribute to a young person's life. Also regional and state trips, annual club trips, the annual Lake Day, the Jr. Prom, the FFA-FHA cookout, and more draw the students together and provide relationships that may have never come about. Everyone has had a few bad times but yet there are so many happenings that make it really worth getting out of bed morning after morning.

European Tour Band Chooses Warren Student

Dan Willis has been notified that he has been selected for membership in the American Musical Ambassadors Band. This highly select concert band, composed of outstanding high school and university students from all over the United States and Canada, will tour several European countries for three weeks in July and August.

Dan, son of Mr. and Mrs. Jim Willis, is a member of the Warren High School Band, directed by Mr. Ed Lee.

Professor Maxine LeFever, an assistant director with the Purdue University Bands and director of the AMA tour, has announced that

Lt. Col. Dale Harpham and Willard Musser will serve as conductors for the 1981 tour.

The tour group will visit Paris, Lucerne, Lugano, Milan, Venice, Innsbruck, Salzburg, Wiesbaden, Amsterdam, Windsor and London. Highlights of the tour will include concerts in the concert halls and parks of Europe. Students will visit many sites of musical and historical importance as well as the popular tourist attractions.

The purpose of the tour is to foster cultural and personal relationships between students of the United States and the people of Europe.



The entire Woodville Eighth Grade went on a field trip Wednesday to the Beaumont Police Station where they were shown a film about drug abuse. The group then took a tour of the jail where they participated in a mock criminal lineup. Shown above are: "criminal" no. 1 Susan McCoy, 2. Tina Shown, 3. Jill Spurlock, 4. Sharice Martindale, 5. Paula Sterling, and 6. DeAnna Kinnon.

Just My Type....

In the past week I have received hundreds of letters, comments, and all sorts of other communications regarding my first column appearing in last week's paper. Nevertheless, I have decided to go ahead and write one for this week's edition anyway.

Thank you,
Keith McCaffety, Jr.

THREE STOOGES

Spawned by a Chuck Norris double feature, three masters of the martial arts have arisen in Woodville High to take their places in the world of super heroes! Instructed in their ways by the "Master", who is forever shrouded in darkness and mystery, they have taken the denizens of crime by storm, striking terrific terror into the hearts of criminals everywhere!

Who are these three harbingers of justice...?! Yes, who makes up this trio of protectors of the innocent...friends to those who have no friends... enemies to those who would threaten the everyday lives of the human race...upholders of truth, justice, and the American way...?! Who? Who? WHO?!!

Despair not, my ignorant friends, for I am here to shed the revealing light upon this team of martial arts heroes. Randy Harrison, Ty Phillips, and Mario Luppi. Known throughout their own fanciful world for their incredible martial arts ability as the "Ninja Brothers", "Kinjle", "Tynjle", and "Minjle", these three have created a cult-like team of ninja heroes who answer only to the iron hand of the mysterious, darkness-enshrouded, and totally fictional "Master".

This was all started several weeks ago when Randy, Ty, and Mario went to Beaumont to see a Chuck Norris double feature at a drive-in theater. After seeing "The Octagon" and "A Force of One", Randy suggested that they create a ninja cult and, as you have no doubt guessed, the idea stuck. They thought up a secret handshake and all sorts of other cult stuff but I don't know what any of it is because they wouldn't show me. Ingrates.

I know what you're thinking, you're saying, "Hey, that's great! I wonder if I can become a member of the world renowned Ninja Brothers!!" Well, I'll tell you what...other people can join, but they must first pass a rigorous test of intelligence, strength, agility, endurance, and a whole mess of other martial arts schtick that are all requirements of membership. So far, everyone who has applied has failed miserably, so I strongly suggest that you not try. Leave stupid ideas like that to your friends and mine, the illiterates.

Warren Band Chooses Beau And Sweetheart

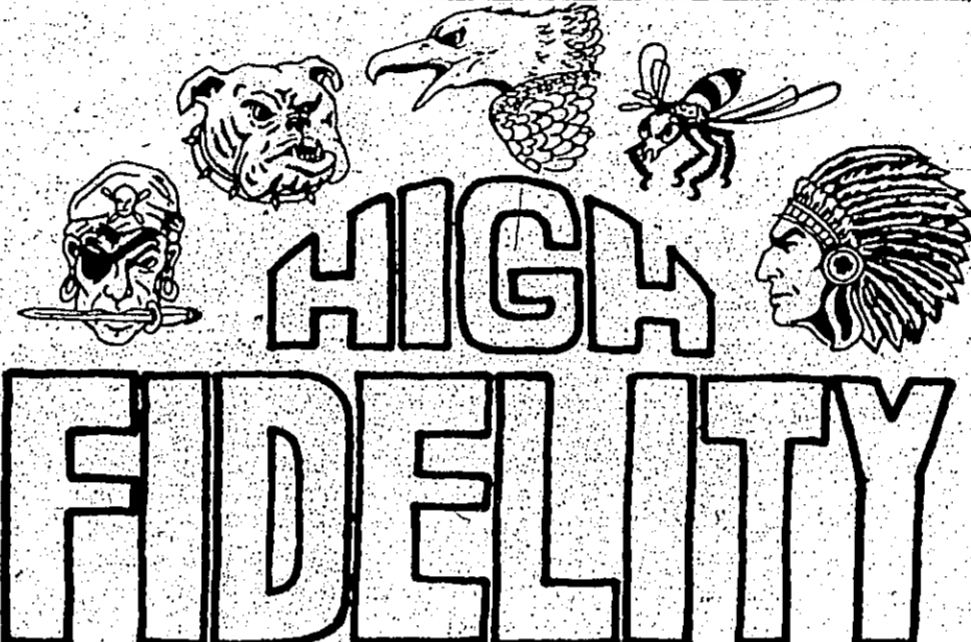
The Warren Warrior wall plaque. Band presented its Beau and Sweetheart at the annual Warren Bands Musical on May 8. The 1980-81 Beau is Johnny Sutton, son of Mr. and Mrs. Derrell Hatton. He is a Junior and Band Treasurer. The Band presented Johnny with a decorative

Woodville Wins Over Kirbyville

The Woodville Eagles beat the Kirbyville Wildcats 2-1 Thursday, May 7th. The game was won in the eighth inning when Scotty Ward hit a double bringing in one of the two runners on base to break the one to one stand off. Mark Alston had earlier hit a single followed by a walk by Kyle Brazil which set up the bases for Scotty's double.

Woodville's pitcher, Ricky Baslow, pitched a great game showing 19

Subscribe
To
The
Booster!



TELL 'EM YOU SAW IT IN THE TYLER COUNTY BOOSTER Thursday, May 14, 1981

Scholastic News About Tyler County Schools

Spurger High School Honors Top Seniors

The Valedictorian of Spurger High School for 1981 is Lisa Lynelle Jordan. Her scholastic average while in High School is 92.21. Lisa participated in basketball, volleyball, tennis, UIL One Act Play, and was a member of the National Beta Club. She was a cheerleader, Senior Class President, Homecoming Princess, Junior Class Reporter, and on the Student Council for four years.

Lisa was selected as an honorable mention One Act Play cast member in 1981. She was Lions Club Sweetheart three years and was the Student Council Vice-President in 1980-81. She has been on the Annual Staff for four years and was Editor two years.

The Salutatorian is Cheryl Lynn Sheffield with an average of 91.52.

She was active in volleyball, FFA, Student Council and the National Beta Club. Cheryl has been the FFA President for 1980-81 and was 5th Vice-President and 2nd Vice-President. Also, she has earned Level I, II and III Encounter Awards in FFA. During

high school she has been elected Miss Spirit, FFA Sweetheart, Homecoming Princess, and Vice-President of the National Beta Club.

The High Ranking Boy of this year's graduates is Harold F. "Casey" Saph, with an average of 86.77. Casey is a member of the FFA



Lisa Jordan



Cheryl Sheffield



"Casey" Saph

Colmesneil High School Announces Honor Students



Mark Matthews

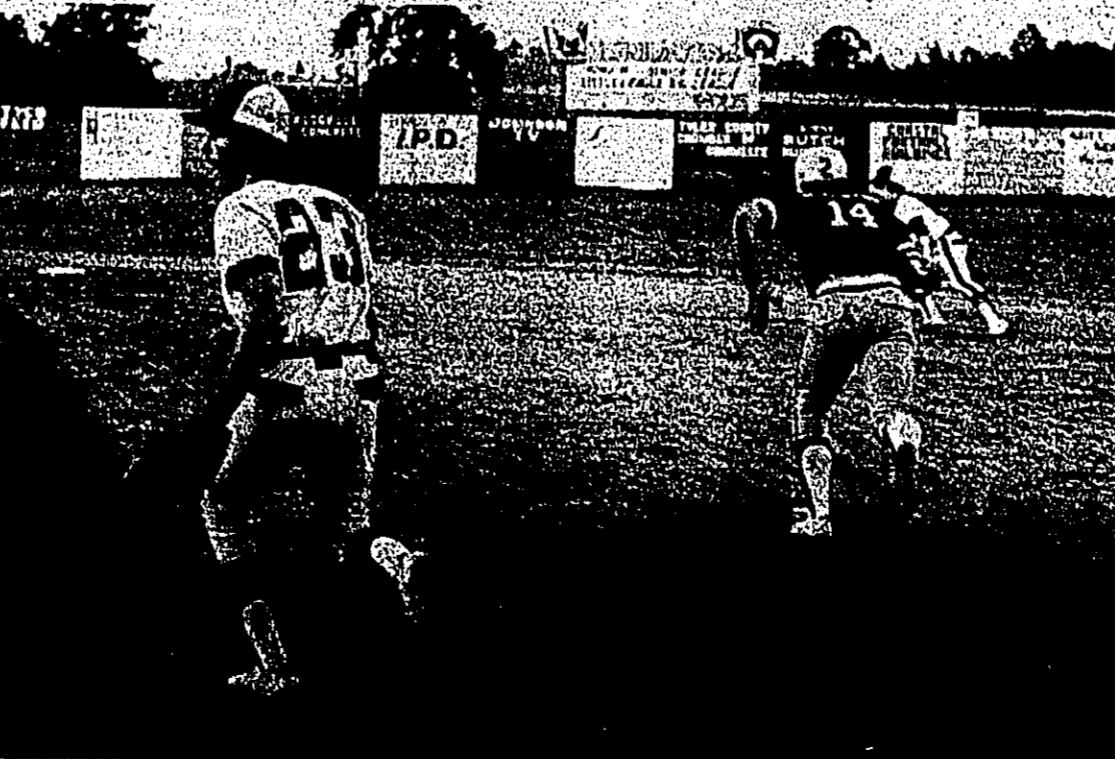
Mark Matthews was named Valedictorian of the Colmesneil High School graduating class. Mark's high school average was a 90.84. He is the son of Mr. and Mrs. Morris Matthews. Various activities of his high school years include: Football-4 years, Baseball-3 years, UIL Literary-2 years, Beta Club-2 years, Class officer-1 year, Basketball-2 years, FFA-4 years, and FFA officer-3 years.

Sally Conner was named Salutatorian of the class. Sally's high school average is 90.34. Sally is the daughter of Mr. and Mrs. Kenneth Ray Conner. Sally's high school activities include: Beta Club-4 years, Annual Staff-2 years, Annual Editor-1 year, UIL Spelling-1 year, Library Aide-3 years, Elementary Student Aide-1 year, and FFA-4 years.

Historian of the Junior Class is Lisa Lewis with a 89.13 average. Other students in the 1981 graduating

Band Night Scheduled

The Warren Band Booster Club will sponsor a Band Honor Night to be held Monday, May 18, at 7 p.m. in the Warren High School Cafeteria. All parents and friends are invited to attend as we give special recognition to the Warren Band students for a job well done. Refreshments will be served.



ADVANCES -- Mark Alston of the Woodville Eagles heads for second base after walking to first in the game against the Kirbyville Wildcats Thursday.



Think about it!

where your dollars
shop
at home
make the rounds...

Brookshire Bros. N. Charlton 283-3333	Montgomery Ward (Weeks Sales Agency) 100 S. Charlton 283-3791	Place Your Ad Here!	Bob's Prescription Shop 1010 W. Bluff  283-3073	PARGAS 311 S. Magnolia 283-2578
A & M Motor Co. 605 S. Magnolia 283-2534	Davis General Merch. Colmesnell 837-2958	Yum Yum Factory 207 W. Bluff 283-7410	Mann Direct Furniture 206 W. Bluff 283-3470 302 N. Magnolia 283-5211	Allison Chevrolet Hwy 69 Colmesnell 283-7605 837-2244
 283-5502	Pic & Save Drive In Grocery 518 S. Magnolia 283-2221	McClure Furniture 305 N. Magnolia 283-2519	Allstate <i>Serving good hands</i> Clemmons Ins. & Real Estate 102 S. Charlton 283-2514	<i>"Preserve your Photographs & Documents the</i> Gray-Way P.O. Box 666 Woodville 713-283-2272
Phillips Heating & A/C Beaumont Hwy 283-5247	Holiday Pines Lodge Inc. <i>"The Tender Loving Cardinal Drive, 'Cure Place'"</i> Woodville 283-3397	Scott's Trendsetter 306 S. Charlton 283-3068	Birdwells Machine & Welding Shop 283-3405	Doug's Auto Sales 410 N. Magnolia 283-3650
Wal-Mart Discount City Hwy 69 & 287 South Woodville 283-2278	Woodville Inn 201 N. Magnolia 283-3741	Woodville Convalescent Center 102 N. Beach 283-2555	Knapp Ford Sales Inc. 104 Pine St. 283-2526	QC Fabrics <i>"For Your Fabric & Sewing Needs"</i> 219 W. Bluff 283-7595
SULLIVAN'S FOR ALL YOUR HARDWARE NEEDS 211 W. Bluff 283-2231	Turner's Radiator & Custom Exhaust Service 283-3777 1100 S. Magnolia 3777	Jarrott's Pharmacy 205 S. Magnolia 283-2550	Southeast Texas Savings & Loan Assn. 400 W. Bluff 283-3747	Magnolia Drive-In's 600 N. Magnolia 283-5235 402 S. Magnolia 283-2492 W. Bluff 283-3172
Edwards Funeral Home 113 W. Holly 283-2511	 Woodromes Auto & Home Glass 312 S. Magnolia 283-7394	Keller Aluminum Products of Texas, Inc Hwy 69 North 283-2545	Champion Fence & Aluminum Co. 430 S. Magnolia 283-7353	J.B. Best & Co. 114 S. Charlton 283-2124
 Bailey Fireplace & Specialty Shop 801 West Bluff 283-7129	Temple-Eastox Forest 403 S. Magnolia 283-3663	Woodville Auto Parts 523 S. Magnolia 283-3782	Davis Feed Market Hwy 69 & 287 Warren 547-3330	East Texas Energy Saving Products 502 N. Magnolia 283-7354
PLACE YOUR AD HERE! AD HERE!	 Dumont Electric Motor Repair 312 S. Magnolia 283-2674	Discover Chiropractic Dr. Harold Harrington 409 S. Magnolia 283-7312	 Globe Mann Ins. Agency 104 W. Bluff 283-2528	Wheat Abstract County Title Combined Companies

Thanks For Shopping Tyler County!

A SHOPPER'S PARADISE
DEADLINE: MONDAY 5 P.M. CALL 283-2569

FOR SALE FOR SALE FOR SALE AUTOMOTIVE

[illegible]

The Tyler County
BOOSTER
CLASSIFIED
ADS
GET RESULTS

<p>Classifieds Get Results!</p>	<p>FOR SALE AUTOMOTIVE</p>		<p>McGinnis Service Center</p>
	<p>FOR SALE: Thunderbird four engines, boat - red & white, Little Dude Trail Trailer. See to appreciate. *300.00, 857-2508.</p>	<p>8 & 1/2 AUTO SALES: We finance. No carrying charge. E15 S. Maple lane. 283-7256.</p>	
	<p>STUDEBAKER HAWK SPORTS CAR, Looks & drives like new. Triple for \$900.00 on brand new, or take more. Jeep, Jack Bunn, Dart-8, Chevy</p>		
	<p>FOR SALE: 77 Blazer, Chevy Chevrolet pkg., new motor, 4 wheel drive. (located) 283-5811. Call clean!</p>		<p>Located at 1404 W. Bluff next to Dairy Queen.</p>
	<p>FOR SALE: 1974 Cadillac Coupe De Ville 2 door, 1966 old. Call after 6 p.m. 429-5500.</p>		

BIG RED SALE

	Reduced Price	SAVE
284 Diesel 30 H.P.	\$7,050.00	\$868.00
384 Diesel 36 H.P.	\$9,887.00	\$1,221.00
484 Diesel 42 H.P.	\$12,088.00	\$1,493.00
584 Diesel 52 H.P.	\$14,534.00	\$3,101.00

NEW EQUIPMENT

CUTTERS	
407 Mohawk W/O Slip Clutch	*753.00
507 W/Slip Clutch	*864.00
510 LW/Slip Clutch	*1,268.00
720 W/Slip Clutch	*1,338.00
960 W/Slip Clutch	*2,376.00
1360 W/Slip Clutch	*5,448.00

DISKS

IH 122 16 Blade 20"	\$1,009.00
IH 122 20 Blade 20"	\$1,299.00
Hester 2 BL Disk Plow	\$516.00
Hester 1 BL Disk Plow	\$417.00

TRACTORS TOTALLY RECONDITIONED

IH 140 (Gas)	\$4,595.00
IH B275 (Diesel)	\$3,895.00
IH 354 (Diesel)	\$4,895.00
IH 574 (Diesel)	\$6,795.00
Belarius 4x4 (Diesel)	\$4,695.00
IH 454 (Diesel)	\$6,095.00
IH 464 (Diesel)	\$6,295.00
Long 445	\$4,995.00

USED EQUIPMENT

TOTALLY RECONDITIONED

430 Twine Baler	\$2,595.00
#14 Rake	\$1,250.00
100 Mower	\$1,200.00
PZ Drum Mower	\$3,200.00
6" Bush Hog	\$695.00
4" Disk	\$395.00
Offset Disk	\$350.00
Cub or 140 Disk	\$350.00
Massey Rake	\$450.00
Cub Grader Blade	\$275.00
5" SNC Cutter	\$450.00
5" Bush Hog	\$450.00
Continental Belt Mower (3 pt. Hitch)	\$600.00

NEW HAY EQUIPMENT

	Sale	SAVE
425 Baler	\$5,675.00	*701.00
435 Baler	*6,861.00	*848.00
445 Baler	*7,528.00	*930.00
1190 Mower & Cond.	*7,812.00	*965.00
1300 Balanced Head	*1,873.00	*231.00
Mower w/7' Bar		
35 Rake w/Tires & Bar	*2,345.00	*290.00
Vicon Acrobot Rake	*1,125.00	*138.00
2400 Round Baler	*9,813.00	*1,213.00
Farm Star Bale Fork	*250.00	*31.00

**—ASK ANY FARMER
OR RANCHER—**

**DON'T SETTLE
FOR LESS
QUALITY**
Invest your hard earned
money on lasting quality
from
International Harvester
**Built to OUTLAST ALL
the others**

A&M Motor Co., Inc.
605 S. Magnolia 283-2534




**Griffin's Texaco
Truck Stop**

Tire Service-Diesel-Gas,
(Truckers Facilities & Cafe)

Open 6 A.M.- 12 Midnight
Closed on Sunday

Hwy 69 South 283-7404

All Cutters On Sale!



Freeman's Tractor & Implement Sales

Hwy 69 Colmesneil 837-5278

Knapp Ford Sales
104 Pine Woodville
Hwy 69 & 287 283-2526

Ford Executive Cars	
1980 Mercury Monarch 4-dr., 6 cyl., automatic, cruise control, air and power	\$6390.00
1980 Lincoln Town Car - Completely loaded, Landau Roof, 12,000 mi. warranty	\$12,900.00
1980 Ford Thunderbird - Completely loaded inc. moon roof, Turbine wheels - 9 more	\$4752.00
1980 Ford Granada 4-dr., Dove Grey, 6 cyl., automatic, air and power	\$5990.00
1980 Ford LTD Country Squire S4, Wagon - All available equipment, 12,000 mi. warranty	\$8675.00
1980 Ford Granada 4-dr., Dark Chamois, 6 cyl., automatic, air and power - 7 more	\$6250.00
1980 Ford Thunderbird - Custom 2-Tone, 6 cyl., air, automatic and full power	\$7150.00

Used Cars		1990-1991
1979	Lincoln Mark V - Loaded, Loaded, plus just 30,000 miles	\$10,600.00
1980	Ford Fairmont 4-dr. 6 cyl., air and full power	\$5295.00
1979	Ford Granada 4-dr. - Super nice 6 cyl. with full power and air	\$4995.00
1979	Toyota Corolla 2-dr. - Automatic and air - Super clean car	\$995.00
1978	Mercury Monarch 4-dr. - Loaded and X-Tra clean	\$4150.00
1978	Chrysler Caravel 4-dr. - Loaded including Tilt wheel, cruise, elec. seats and windows	\$995.00
1977	Ford Thunderbird - 25,000 1-owner miles and super nice	\$9995.00
1977	Ford LTD 4-dr. - Super clean and loaded including leather interior	\$3995.00
1978	Ford LTD 4-dr. - Father's condition, runs, probed inspection	\$2995.00
1978	Ford Mustang Mach 1 Hatchback - Runs Great and Loaded - Must See	\$2850.00
1974	Honda Civic - Runs Good	\$1395.00
1978	Ford F250 6-Ton - Full power, air, 4-speed, new tires and brakes	\$2995.00
1978	Chrysler 76-Ton - Runs Good	\$995.00



The Consumer Alert

by Mark White
Attorney General

AUSTIN—12 million people have switched from wearing glasses to contact lenses. This is a little over 10% of all those who need corrective lenses.

If you decide to purchase contact lenses, select your practitioner carefully. You may find it helpful to ask a trusted friend or relative to refer you. Also, be sure you know exactly what is included in the quoted price, which may include any or all of the following: the eye exam to check your vision and measure your eyes; the contact lenses; a fitting to show you how to put the lenses in, take them out, and clean them; and follow-up visits to adjust the lenses to your eyes.

The next step toward freedom from eyeglasses is deciding which of the four types of contact lenses are best for you. Hard lenses, soft lenses, intracorneal lenses, and extended-wear soft lenses. It's best to check with your eye specialist since some vision problems can be corrected only with certain lens types.

Hard lenses were the first kind of lenses made. They are also the least expensive of the four types. They can vary from about \$25 upward including the eye examination and follow-up visits. There are also special hard lenses that are more comfortable because they allow oxygen to permeate the lenses, and let the eye breathe. They are also more expensive.

Soft contact lenses are made of water-absorbing plastic developed in Czechoslovakia and introduced here in 1964. Consumer Protection and Anti-Unfair Trade Practices Division

Soil Conservationist Warns Of Common Poisonous Plants

At least 75 plants that grow in Texas are poisonous and can cause death, illness, or extreme discomfort, to people, a local conservation leader warned this week.

Tom Mackey, district conservationist for the Soil Conservation Service, U.S. Department of Agriculture, at a meeting of the county Extension Agents, said parents should be concerned in the species of plants that are common in flower and vegetable gardens; in ornamental landscaping; and in the fields, pastures, or forests.

"Choking, swallowing, or otherwise contact with the toxic parts of these plants, trees, and shrubs takes a heavy toll," Mackey said.

"Each year health service reports that about 12,000 children are poisoned or injured by these sources.

"In fact, we have already heard of two children in Texas, ages 2 1/2 and 3, who ate deadly nightshade berries earlier this year," Mackey continued. "Thanks to a concerned parent, who took the plant to an SCS office for identification, a doctor was alerted and he treated the children successfully."

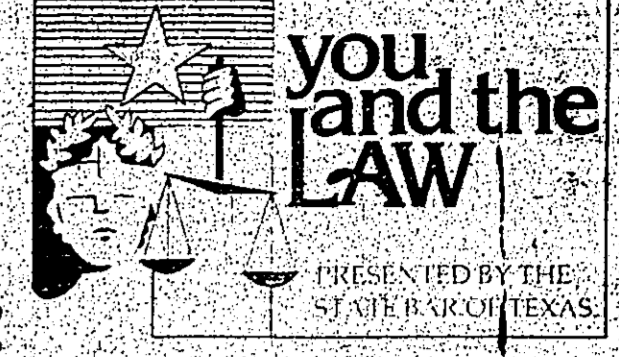
Mackey said the beautiful oleander bush is one of the most poisonous plants in Texas and is grown all over the state. It contains a deadly heart stimulant similar to the drug digitalis that is so strong that a single leaf can kill a child. People have died merely from eating oleander leaves and twigs and leaves.

"Especially deadly are the leaves of the oleander," Mackey said. "The berries, which are almost everywhere, are also deadly. Growing from two to five feet tall, it has a funnel-shaped, five-lobed flower that is white or pink. The leaves are dark green and shiny. All parts are poisonous."

"The berries are especially deadly," Mackey said. "The berries are almost everywhere, and the leaves are also deadly. Growing from two to five feet tall, it has a funnel-shaped, five-lobed flower that is white or pink. The leaves are dark green and shiny. All parts are poisonous."

"The berries are especially deadly," Mackey said. "The berries are almost everywhere, and the leaves are also deadly. Growing from two to five feet tall, it has a funnel-shaped, five-lobed flower that is white or pink. The leaves are dark green and shiny. All parts are poisonous."

Shop At Home!



Q: My husband and I ordered an abstract to sell our property, but it was not a judgment against a person who was part of our husband's estate. The abstract company says they place every judgment in the abstract if the names are similar and they won't remove it without another fee. This put a lien on the property, and we cannot sell without paying someone else's debt. Doesn't the state of Texas have a law against wrongful recording of a lien?

A: No, unfortunately, the state does not have a law that prohibits the recording of a lien that is not a judgment against a person who is part of the estate. The abstract company is correct in that they place every judgment in the abstract if the names are similar and they won't remove it without another fee. This put a lien on the property, and we cannot sell without paying someone else's debt. Doesn't the state of Texas have a law against wrongful recording of a lien?

A: No, unfortunately, the state does not have a law that prohibits the recording of a lien that is not a judgment against a person who is part of the estate. The abstract company is correct in that they place every judgment in the abstract if the names are similar and they won't remove it without another fee. This put a lien on the property, and we cannot sell without paying someone else's debt. Doesn't the state of Texas have a law against wrongful recording of a lien?

Brookshire Bros. THE BEST FOR LESS

PRICES GOOD 6 DAYS WED., MAY 13-TUES., MAY 19. CLOSED ON SUNDAY

BARBEQUE SAUCE 18 OZ. BTL. LIMIT 2 W/ \$10. PUR. 68¢	SHORTENING LIMIT 1 WITH \$10.00 OR MORE PUR. 99¢	BROOKSHIRE BROS. GRADE A SMALL EGGS 2 DOZ. CAN 49¢	PEPSI 2 LITERS 99¢	ICE CREAM WHITE SILVER & GOLD RIM ASSORTED FLAVORS 229¢	STEAK USDA CHOICE HEAVY BEEF 188¢	HENS SWIFT PREMIUM GRADE A CHICKEN 69¢	BACON 10 LB. BOX 599¢
PAPER TOWELS BIG ROLL 89¢	BLUE BELL 3-D MONSTER FUN SHAPES ASSORTED FLAVORS 1/2 PACK \$1.29	SUPER SUDS POWDERED DETERGENT SAVE 20¢ TO 30¢ BOX 229¢	TRASH BAGS GLAD 3 PLY PKG. TO SAVE 20¢ \$1.47	COOKIES MCCORMICK SUGAR CO. BAKED ULTIMATE CHOCOLATE CHIP \$1.09	STEAK USDA CHOICE HEAVY BEEF TENDERLOIN TIP \$2.19	STEAK USDA CHOICE HEAVY BEEF RIBLS. \$2.89	ROAST USDA CHOICE HEAVY BEEF \$2.39
CREAMY MAYONNAISE 16 OZ. JAR SAVE 26¢ 79¢	DOG FOOD 40 LB. BAG SAVE 60¢ 799¢	DIAMOND STANDARD FOIL 12" x 25" ROLL 2 ROLLS \$1	GLADIOLA ALL PURPOSE FLOUR 5 LB. BAG SAVE 26¢ 89¢	CORNBREAD MIX GLADIOLA 6 OZ. POUCH 41¢	HAM NORMAN SLICED ASSORTED 4 OZ. 109¢	STEAK EXTRA LEAN GROUND 219¢	FRESH CUTS OF MEAT AT OUR EVERYDAY LOW PRICES. PLUS S&H GREEN STAMPS

MANUFACTURERS COUPONS REDEEMED FOR DOUBLE FACE VALUE SATURDAY, MAY 16
NO LIMIT ON NUMBER OF COUPONS YOU CAN REDEEM

50¢ COUPON = \$1.00
50¢ COUPON = \$1.00

HY-TOP POWDERED BLUE DETERGENT 42 OZ. BOX **\$1.29**
HY-TOP BATHROOM TISSUE 4 ROLL PKG. **89¢**
HY-TOP TUBS MARGARINE 1 LB. **69¢**
BROOKSHIRE BROS. SMOKED SAUSAGE 1 LB. **189¢**

Fertilize Sport Fish Ponds

COLLEGE STATION—Commercial inorganic fertilizers can double fish production in sport fish ponds, a local conservationist said.

"Fertilization boosts pond productivity by increasing the phytoplankton (minute floating plants) population, the main link in the aquatic food chain. Increasing phytoplankton boosts food throughout the food chain, producing more fish," explains Billy Higginbotham, fisheries specialist with the Texas Agricultural Extension Service, Texas A&M University System.

Before fertilizing a pond, chemically remove all aquatic plants as they will use most of the fertilizer.

"Using the wrong amount of fertilizer and fertilizing at the wrong time of the year can cause ineffective fertilization of fish ponds," says the specialist.

Higginbotham recommends a 20-20-5 fertilizer for fish ponds, more pounds may be produced but the average also usually remains small.

"Results will be achieved with a balanced fish population."

Decide a pond fertilization program is started, continue it on an annual basis or the pond will suffer a severe food shortage.

Save on Fine Quality Produce at Your Favorite Brookshire Bros. Store

PLAIN LABEL RUSSET POTATOES 15 LB. BAG \$2.99	FRESH NEW POTATOES LB. 39¢	LARGE SALAD TOMATOES CELLO WRAPPED 3 LBS. \$1.	BELL PEPPER 4 FOR \$1.	SUNKIST CABBAGE 5 LBS. \$1.	ORANGES LBS. 39¢
---	--	--	---	---	--------------------------------------

EXTRA STAMPS
WITH THIS COUPON AND PURCHASE OF Pkg. OF HY-TOP LIGHT BULBS
GOOD: MAY 13-19, 1981
100

EXTRA STAMPS
WITH THIS COUPON AND: \$5.00 Or More Purchase (Excluding Cigarettes)
GOOD: MAY 13-19, 1981
50

ASSORTED PLANTS
1 INCH
\$3.99

FLORIST SHOP

HEALTH & BEAUTY
GLADIOLA SHAMPOO 18 OZ. SIZE **\$1.99**
FINAL NET
HAIR SPRAY 4 OZ. SIZE **\$1.59**
LIQUID SOAP
SOFT SOAP 14 OZ. SIZE **\$1.49**

Brookshire Bros. WHERE YOU ALWAYS GET THE BEST PRICES

HY-TOP BATHROOM TISSUE 4 ROLL PKG. 89¢	HY-TOP TUBS MARGARINE 1 LB. 69¢	BROOKSHIRE BROS. SMOKED SAUSAGE 1 LB. 189¢
--	---	--

Brookshire Bros. FROZEN FOOD SPECIALS

TOTINO'S PIZZAS HAMBURGER-SAUUSAGE-PEPPERONI-CHEESE 12 1/4 OZ. SIZE \$1.39	FRENCH FRIES 6 LBS. BAG \$2.79	COFFEE RICH WAFFLES 10 OZ. QTY. 55¢
ORANGE JUICE 12 OZ. CAN 89¢	BANQUET CHOCOLATE COCONUT AND LEMON CREAM PIES 14 OZ. SIZE 69¢	

Brookshire Bros. THE BEST FOR LESS

QUANTITY RIGHTS RESERVED

FOOD STAMPS

STORE HOURS
7:30 A.M. - 8:00 P.M.
MONDAY - SATURDAY
NORTH CANTON, TEXAS
WOODVILLE, TEXAS

'Ulreich' Comes Home-Texas Befriends Chicagoan



SHADOW COMES HOME... Mary Lee Morris gives one last hug to Shadow Ulreich before the dog begins her trip home to Oak Forest (IL). How the cocker spaniel/Lhasa Apso made the 1,100-mile trek from Illinois to Texas is unknown. But she flew home first class, thanks to her Texas friends and two airlines. Photo Credit: Roy Bray, Beaumont Enterprise

DALLAS, TX—After 15 months on the road, Shadow Ulreich is back home in Chicago, thanks to two Texas women and a couple of friendly airlines.

Shadow isn't saying how she made the 1,100-mile trek from the Ulreich place in suburban Oak Forest to Warren, Texas, but she flew home first class courtesy of her new Texas friends, Texas International and American Airlines.

Mary Lee Morris spied Shadow aimlessly wandering the streets of Warren. Strangers are noticed quickly in the little East Texas town. Shadow was tired, hungry and needed a bath, so Mrs. Morris invited her home. Mrs. Morris appreciated the company. Husband John included a trip to the Gulf of Mexico as a reward on a Sun Gas Company production platform.

While Shadow was eating, Mrs. Morris looked for identification. She found the Ulreich's address and phone.

They were shocked, and delighted, to hear of Shadow's whereabouts. The Ulreichs had given up hope of recovering the cocker spaniel/Lhasa Apso.

Mrs. Ulreich quickly sent a check to pay Shadow's bills, which included a trip to the veterinarian for shots and a complete physical. The first came from Chicago posed a problem. Mrs. Rita Brown in Iowa Airlines will not accept animals as baggage unless the temperamental Shadow home on the exceeds 45 degrees and family's pass. But Shadow had to get the 300 miles from Warren to Dallas. Texas International came to the rescue with a free trip from Beaumont to Big D.

Shadow was going home at last. But what to wear? Shadow sported a big yellow ribbon around her neck when she boarded the plane for Dallas. The departure brought tears to Mary Lee Morris' eyes, but she was happy for Shadow. Someone once returned a lost dog to her and refused the reward money, so Mrs. Morris was returning the good deed.

Shadow was the center of attention on the flight to Chicago. Captain Brown was the pilot. And Shadow flew first class.

Shop
Tyler
County
First!

OUR WAY IS YOUR WAY...
Fairway
FOODS

QUALITY SAVINGS

Ask For The
**Mystery
Dollar
Man!**

Let your table sparkle with the heady beauty of this magnificent dinnerware.

Floral Expressions

Hearthside Stoneware

Start this week... Collect a Complete Set
Save More Than 50%

Fairway Foods

brings you superb dinnerware at a money-saving never-before price—at extraordinary savings that make it easy for you to bring into your own home.

As refreshing as a breath of country air, the new Floral Expressions dinnerware will bring the beauty of thousands of fresh flowers to your table. The exquisite hand-painted designs have been inspired by the joy of seeing blossoms blooming in a woodland garden. Light, honey-colored backgrounds and a vibrant sequence that bring out all the beauty of a flower's form, the heart of the flower, the delicate veins and a touch of color. The result is a collection of dinnerware that is both beautiful and functional. Every piece is reinforced with a high temperature glaze that ensures resistance to chipping, staining and fading. In this dinnerware series, the glazing process is repeated after each wash, making your complete set today.

Your Choice of Three Exquisite Patterns
Summer Time • Spring Time • Foliage Time

Each Piece Only
69¢

Follow This Weekly Schedule

1st week	DINNER PLATE	69¢
2nd week	CUP	69¢
3rd week	SAUCER	69¢
4th week	Decorated SALAD PLATE	69¢
5th week	CEREAL BOWL	69¢

*THIS SCHEDULE WILL BE REPEATED

In addition to its table-enriching beauty... there's a lot more to love about these new dinnerware sets.

"Floral Expressions Dinnerware"

Dishwasher Safe... and detergent proof. Retains its vibrant colors and fresh-as-pew beauty washing after washing.

Oven-Safe... goes from main table to freezer making it the money-saving economy of keeping leftovers for later.

Safe in Micro-Wave Ovens... for time saving, energy saving heating and cooking.

Every Piece Back Stamped... the hallmark of quality. Every piece is stamped with the Fairway Foods logo in the back and most expensive dinnerware.

Start this week to collect a complete set of lovely Floral Expressions Dinnerware. Don't Miss Out... This is a Limited Offer!

Look for this
DINNERWARE DISPLAY
AT
**Fairway
Foods**



Presenting
CLASSIC BLACK

Giftworthy, distinctive and traditionally Cross. Classic Black is indeed a gift of quality. A beautiful satin-black finish is accented by 21 karat gold electroplate and the Cross mechanical guarantee promises a lifetime of writing pleasure.

JARROTT'S PHARMACY
205 South Magnolia
Woodville, Texas 75979

SOUTHEAST TEXAS SAVINGS & Loan Association

Serving all of Southeast Texas

All accounts insured to \$100,000

Member of:
Federal Savings and Loan Insurance Corporation
Federal Home Loan Bank System
United States Federal Reserve Bank
Texas Banking and Loan League

Head Office:
300 W. Main, Woodville, TX
Branches at: Commerce, Livingston, 283-3747

Serve Home by:
Savings and Loan Department
Federal Home Loan Bank System

GC FABRICS

EVERYTHING FROM A TOPZ AT GC FABRIC... Just a few of the fabrics and accessories available at GC Fabric, located near Sullivan's Hardware on West Bluff in Woodville. You'll find: exotic prints, crinkle gauze in solids and prints, calico prints and solids, counted cross stitch fabric, books, Susan Bates Embroidery Thread, Steamline buttons, linen weave fabrics, Shantung weave fabric, Butterick patterns, Vogue and Simplicity patterns. AVAILABLE FOR SPECIAL ORDER ARE: crepe patterns; quilting patterns; stencils and thread; stretch-terry fabric; albat fabrics; knit fabrics; Metrosene thread; trims; ribbons; zippers; elastic; and Clingher sections. ANYTHING ELSE? Just call GC Fabric Store owner Georgia Collins at 283-7585.

Dale's Exhaust

TRADE MARKS!!... Custom made tail pipes and exhaust systems, custom duals, glass packs and turbo-and original equipment type mufflers are our specialty. Shown above are an example of Dale's Custom work. Three exhaust system parts let customers know about the quality work at Dale's Exhaust Service. Mufflers and tail pipes installed while you wait... Monroe Shocks also available. Go to Dale's Exhaust Service on Highway 69 South and ask for Dale, or call 283-5502.

Perfecto Cleaners

"WE KEEP YOU LOOKING GOOD" is the key slogan at Perfecto Cleaners, located at 305 West Bluff in Woodville. Specializing in professional dry cleaning, this shop also offers alterations and cedarized storage bags to its customers. "We offer a dry cleaning service for student band and all professional uniforms, too!"

Don's Heating & Air Conditioning

KEEPING THINGS COOL is Don Cryer, owner of Don's Heating and Air Conditioning, serving Tyler County Air Conditioners and Heaters for many years. Don will perform service on any make of central or window air conditioning units. Specializing in Payne, Brand, Central Air and Heating elements which are manufactured by Carrier Corporation. Don can be reached by calling Chester 969-2533 or Woodville 283-2805.

COMPLIMENTS FROM THE CHIEF!! Homestead Restaurant Chef Vernon Brown offers the following exciting menu for Thursday thru Sunday, May 15-18. THURSDAY (Friday and Saturday, too!) LUNCH: Mexican Food, \$3.95. Includes chips and pinto-sauce. DINNER: Tampiqueno (Mexican Steak) with enchilada, tacos, rice and beans, \$6.95. FRIDAY DINNER: Seafood Platter... breaded oysters, shrimp, and stuffed crab and fish fillet, \$8.95 or \$9.95. SATURDAY DINNER: Charbroiled Shish-ka-bob with rice pilaf. SUNDAY DINNER: Baked Chicken with cornbread dressing, Ham with jewel sauce. Gourmet peas and parmesan buttered potatoes. Exquisite dining at its best. Call 283-7324.

Tyler County Business Of The Week

FRIDAY, MAY 15TH
AT THE PHOENIX

ADULTS NIGHT

NOSTALGIA

BIG BAND REVIVAL 30's - 40's - 50's
ORIGINAL MUSIC OF THE MASTERS OF THE ERA
WHERE WERE YOU IN '42? '52?

TOMMY TUCKER PIZZA SUPPER
6:30 to 8:30 p.m. No charge if you Sing • Dance • Play an Instrument Act • Comedy • Monologue Come out and play with us!

DANCE TIL WHEN
In the Paragon Ballroom of the Phoenix in the heart of downtown Woodville. 9:30 p.m. per person \$7.00 per couple

FUN • FOOD • ENTERTAINMENT "FOR THE YOUNG AND THE YOUNG AT HEART"

THE PHOENIX

• GAME ROOM
Electronic Games • Pin Balls
Hours: Tuesday thru Thursday 3:30 p.m. - 11 p.m.
Friday - 3:30 p.m. - Midnight
Saturday - 10 a.m. - Midnight

• DJ's
Jockey • Live Bands • 30" x 32" Dance Floor

• PIZZA
Eat here or take home

• MOVIES COMING SOON

• LIVE THEATER

• AVAILABLE FOR PRIVATE PARTIES AND GROUP ACTIVITIES

103 WEST WHEAT • "IN THE PINES" • WOODVILLE • 283-2853

NOW OPEN... "The Phoenix", located just behind the Tyler County Court House, is now open and ready for its "Adult Night Nostalgia" this Friday, May 15th. Scheduled to be a big band revival of the 30's-40's and 50's with the original music of the masters of the era. DANCE TIL WHEN! In the Paragon Ballroom in the Phoenix in the heart of downtown Woodville. \$3.50 per person, \$7 per couple. "Fun, food, entertainment for the young at heart." Come as you were, or would like to have been, or as you are. Oh yes! If you have any memorabilia you'd like to bring to the climate of the event, bring it and share. Don't miss it at 103 West Wheat, "In the Pines", Woodville 283-2805.

Lollypop Boutique

LOLLYPOP BOUTIQUE OWNER Eunice Bohannon and her sales staff have the dress shop "Sales Tip Of The Week" at their fashionable store, located at 1304 West Bluff in Woodville. Just ask to see the spring and summer fashions on sale just in time for graduation-minded young ladies ready for summer. On sale now you'll find formal long dresses at 30 percent off and all lingerie at 25 percent off. Check Lollypop Boutique also for a large selection of cute sport sets and swimwear. Don't forget gift certificates for your favorite graduate plus free gift wrapping. Call 283-2741.

Holderman Building Center

GRADY HOLDERMAN, owner of Holderman Building Center (formerly Altman's Building Materials), 105 South Willis next to the railroad tracks, is offering a special value this week on Olympic Stein. "For every four (4) gallons you buy we'll give you one (1) FREE!" This hardware and lumber supply facility is open from 7 a.m. to 5 p.m. daily and on Saturday from 7 a.m. till noon. The store also has a good selection of Pittsburg Paints available now for that necessary touchup around the house. Stop by today or call 283-2754.

SOUTHEAST TEXAS SAVINGS & LOAN ASSOCIATION

SOUTHEAST TEXAS SAVINGS & LOAN ASSOCIATION

OVER THE TOP... Fastly approaching 25 million dollars in assets, the Southeast Texas Savings and Loan offices in Woodville in their new modern building are now offering 5 1/2 percent interest-bearing NOW CHECKING ACCOUNTS. According to SESTA's officer Richard Davis, "Customers are reminded about our convenient drive-up window and our two other convenient locations in Kountze and Livingston." The SESTA's building is insured for \$100,000. Stop by today at their West Bluff Street location or call 283-3747.

Tyler County Sheltered Workshop

WORKERS OF THE WEEK... The Tyler County Sheltered Workshop is a program of the Deep East Texas MHMR Services whose purpose is to provide work or training to the mentally and physically handicapped of Tyler County. Currently, the Workshop provides various services, including commercial cleanup for businesses, yardwork and car washes, and shortly will be helping with the Memorial Wall at Heritage Village. Anyone interested in learning more about the Sheltered Workshop and its services can call 283-7471 for more information.

FAIRWAY FOODS

OUR WAY IS YOUR WAY... **QUALITY SAVINGS**

OPEN Mon-Thru Sat 8 a.m. till 8 p.m. Sunday 10 a.m. till 6 p.m.

HYDE PARK COOKING OIL 48 oz. **179** SAVE 40¢

DURKEE POTATO STICKS 4.5 oz. 99¢

BLUE BELL FUN SHAPES MONSTER BARS 12 oz. \$1.39

NABISCO NUTTER BUTTER COOKIES 13 oz. \$1.19

NILLA WAFERS 12 oz. 99¢

FRESH BAKE BURGER & HOT DOG BUNS 2 1/2 doz. \$1.29

GENERIC WHOLE KERNEL & CREAM STYLE CORN 3/109

JEWEL SHORTENING 42 oz. **139** SAVE 30¢

WOLF HOT DOG 10 oz. HOT DOG SAUCE 2/79

SHASTA CAN DRINKS 6 CANS **125** SAVE 60¢

KRAFT ITALIAN CHUNKY BLUE COLE SLAW CATALINA 8 oz. 79¢ 89¢ 89¢ 79¢

LUZIANNE TEA BAGS 48 ct. \$1.29 SAVE 50¢

LONE STAR DOG FOOD 20 LB. **399** SAVE 80¢

BORDEN BUTTER MILK 1/2 GAL. **119** SAVE 30¢

CARNATION COFFEEMATE SWIFT CHICKEN VIENNAS 16 oz. 5 oz. \$1.69 3/88¢

OPEN PIT BAR-B-QUE SAUCE 18 oz. 89¢

BANQUET WESTERN DINNER MARTHA WHITE FRUIT MUFFIN MIX 7 oz. 3/99¢

MARTHA WHITE YELLOW CORN MUFFIN MIX 7.5 oz. 4/100

BORDEN CHEESE COTTAGE 12 oz. 79¢

EAGLES 7 RAT BAIT 16 oz. \$1.98

RAID ANT & ROACH KILLER 11 oz. \$1.79

RODEO SLOGEN CAPS ASSORTED \$2.99

KRAFT CREAMY CUCUMBER OR THOUSAND ISLAND 8 oz. **72¢** SAVE 15¢

HUGGIES DIAPERS 4 KINDS **279** SAVE 20¢

CAULIFLOWER & BROCCOLI 99¢

CHILLIAN RED GRAPES 12 oz. \$1.29

YOUNG & TENDER SQUASH 1 lb. 59¢

BRIGHT & RED RADISH 4 59¢

GREEN ONIONS \$1.00

NEW SEASON CANTALOUPE 89¢

Garden Show

Storewide Values

FRESH CALIFORNIA STRAWBERRIES 99¢ LB. DISPLAYED LOOSE 79¢ LB.

Strawberry Shortcake

KINGSFORD CHARCOAL 10 LB. \$1.99

COLORTEX TISSUE 4 ROLL PK. 3/197

ARTESIAN MINERAL WATER 32 oz. 69¢

BONDWARE FANTASIA HOT CUP 7 oz. 99¢

JOY DISH LIQUID 25 ct. \$1.79

GORTONS FISH PORTIONS 2 LB. BOX \$3.55

DUNCAN HINES CAKE MIXES 18.5 oz. 3/\$2.39

MAIL IN COUPON GET BACK \$2.40

GLADIOLA CORN MEAL 5 LB. **129** SAVE 20¢

BLUE BELL ICE CREAM 1/2 GAL. \$2.39

FRESH PORK BONES 13 49¢

FEET 13 59¢

TAILS 13 59¢

SWIFT BUTTERBALL TURKEY BREAST 13 149¢

MRS. PAUL'S FISH STIX 24 ct. \$3.30

ALL FLAVORS DORITOS 139¢

HEAVY BEEF BLADE CUT CHUCK STEAK 1 LB. **149** SAVE 70¢

KRAFT AMERICAN SINGLES 12 oz. \$1.39

GLADIOLA POUCH MIXES 5 VARIETIES 6 oz. **5/\$1.00** SAVE 30¢

BONDWARE FANTASIA COLD CUPS 50 ct. 14 oz. **139** SAVE 30¢

DECKER BOLOGNA 12 oz. 139¢

SALAMI 12 oz. PKG.

LUNCHEON 12 oz. \$1.39

DECKER WEINERS 12 oz. PKG. \$1.39

DECKER BACON 16 oz. \$1.89

FRESH GROUND CHUCK 1 LB. **189**

5 LB. BOX BEEF PATTIES \$6.79

3 LB. BOX BEEF PATTIES \$4.09

BONELESS BEEF CHUCK ROAST 1 LB. \$1.89

BONELESS BEEF RUMP ROAST 1 LB. \$2.09

BONELESS BEEF CHUCK STEAK 1 LB. \$2.19

KERR REG. PINT JARS 12 ct. \$2.99

GOOCH SLICED SLAB BACON 1 LB. **79¢**

HEAVY BEEF FAMILY PACK ROUND STEAK 1 LB. **219**

TENDERIZED ROUND STEAK 1 LB. \$2.59

CENTER CUT ROUND STEAK 1 LB. \$2.39

HEAVY BEEF BLADE CUT CHUCK ROAST 1 LB. **139**

Angelina College Offers Nurse Aide Course

Angelina College, Community Services Division, is offering a Texas Education Agency approved course in Nurse Aide training. The course begins May 18 and will meet each Monday, Tuesday and Thursday from 6 p.m. to 9 p.m. for 7 weeks. According to an Angelina College spokesman, the demand for nurse aides in the East Texas area is great and job openings are available in many of the health care facilities in the region. Upon successful completion of the course, students will have the skills necessary to gain employment as an aide.

R.N. will teach the course. According to Ms. Moorer, course content will include personal qualities of the nurse aide, working environment of the medical facility, personal care of

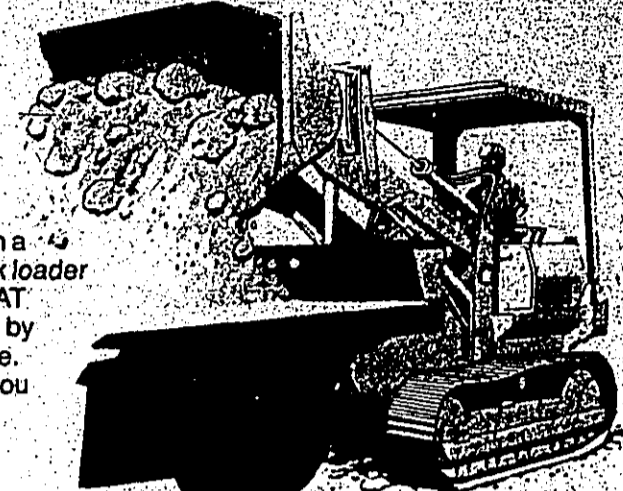
the patient, nutrition, observing and taking vital signs and other aspects dealing with the nurse aide job functions. The course will last a total of ten weeks.

Texas Education Agency guidelines state that each student must receive 60 classroom hours of training in order to be certified as an aide. Cost for the course is \$60. Registration is

currently being conducted in Room 111 of the Administration Building at Angelina College. For more information concerning the course call 639-1301.

Shop Where It Pays Pays!
Here In Tyler County!

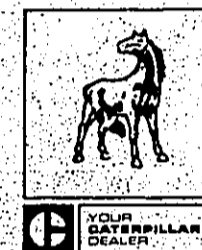
MUSTANG has the one-yard CAT 931B track loader that's loaded with big machine features!



Now you can own a smaller CAT track loader with traditional CAT quality—backed by Mustang's service. The 931B gives you these features:

- 65 Flywheel Horsepower
- Full Power Shifting, 3 Forward, 3 Reverse
- Pedal Steering and Braking
- 11,560 Lb. Breakout Force
- 15,330 Lb. Operating Weight

First 3 months rental applies to purchase on selected models.

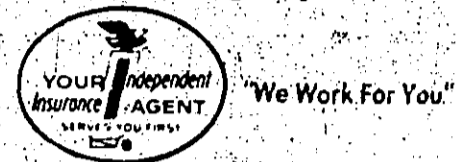


Mustang
TRACTOR & EQUIPMENT CO.

Contact Charlie Brittain
639-5551
(mobile phone-Lufkin) 634-0191
Royce Hill (mobile phone-Lufkin) 634-0169

Caterpillar, Cat and are Trademarks of Caterpillar Tractor Co.

AUTO, HOMEOWNERS and BUSINESS INSURANCE at the right price.



Collier Agency
212 W. Bluff
283-2242 Malcolm Collier

BEAUMONT - Two National Cheerleaders Association certified cheerleader camps are scheduled this summer at Lamar University.

Dr. Charles Wiley, director of bands for Lamar and summer camp director, said the two camps will be June 14-18 and June 28-July 2.

The cost of the camps is \$42 for tuition and \$86 for tuition, room and board. Insurance (accident-health) will be included at no extra charge for all campers. Activities included

in the camp are gymnastics on everything from cartwheels to aerials and partner stunts. Training about game rules and signals will also be taught. Individual squad workshops will provide training at beginner, intermediate

and advanced levels. Registration should include a \$10 deposit. Further information may be obtained from the music department at Lamar. Final registration will be in Brooks-Shivers Dormitory from 2-4 p.m. Sunday, June 14 for the

first camp and 2-4 p.m. Sunday, June 28 for the second. Sponsors may also attend and they will be housed separately from their students. Wiley said. Room, board and tuition is \$45 for sponsors.

Area Schools Band Camp Offered

BEAUMONT - July camp. 5-10 500 high school and junior high school students will be on the Lamar University campus for the annual includes room, board Summer Band Camp and tuition. Commuters sponsored by the music who live at home and department of the university.

Five full days of band music and marching and other activities are planned. Dr. Charles Wiley, director of bands at Lamar, announced.

Four hours of band class per day, plus an hour of class with chosen sections will enable all of the students to get some real valuable training, Wiley said.

Limited to 500 students, deadline for registering for the camp is May 15.

There are 10 staff members and 14 instructors with national recognition conducting the

SEAMLESS GUTTERS

★ ALUMINUM ★

★ COLORS ★

Call Collect:

C. Grady Holderman

283-3727 or 283-5446

Woodville, Texas

Trade

At

Home!

This Sunday Enjoy "A Special Part Of Texas!" FAMILY SUNDAY BUFFET INN OF THE TWELVE CLANS

12:30-2:30 p.m.

Includes: Carved Roast plus chef's selection of family, and exotic dishes from around the world with tasteful salads & deserts.

ADULTS \$4.75
CHILDREN \$2.75

ALABAMA-COUSHATTA INDIAN RESERVATION

LOCATED ON PARK ROAD 56 OFF U.S. 190,
16 Miles West of Woodville



BIRDWELL'S
Of Woodville

Final Markdowns Have Been Taken!

Last Chance At Great Bargains!

Sale Ends Wednesday, May 20th

Hours for 18-19-20 ONLY
10:00 a.m. till 7:00 p.m.

Remember Last Shopping Day Wed., May 20th

Don't Miss Your Buy Of A Lifetime!

To Our Friends & Customers—

We want you to know we have appreciated your patronage through the years. We invite you to come visit & Shop with us in Silsbee.

Congratulations to Janice Kirchhoff, April winner of Savon Drugs Big \$100⁰⁰ Grocery Giveaway. Come In and Register Now With No Obligation. IT PAYS TO SHOP AT SAVON DRUGS.....

SUN RAISIN CANVAS OVERSIZED TOTE BAG 99¢

CARPET MATS 4" VAL. \$1.99

TRASH BAGS 1" VAL. 30" GAL. 10" COUNT 69¢

TRAVEL ALARM CLOCK 14" VAL. \$6.99

PINE OIL CLEANER 28 oz. 79¢

FINAL NET AEROSOL HAIR SPRAY 9 oz. \$1.19

FILM PROCESSING SPECIAL MAY 13-19

FREE FILM FOR EACH ROLL DEVELOPED EXCLUDING SLIDES & MOVIES

COFFEE FILTERS

FITS MR. COFFEE & OTHERS

2 FOR \$1.00

MARVEL LIGHT BULBS 4 FOR \$1.00

CANVAS TOTE BAG UMBRELLA SET 10" VAL.

FOR \$8.88

JERGEN'S BAR SOAP 29¢ VAL.

6 FOR \$1.00

ITALIAN DESERT SET \$7.77

LADIES ASSORTED BILLFOLDS 15" VAL. \$7.88

COLOR REPRINTS FROM NEGATIVES 19¢

COME IN AND REGISTER FOR \$100 WORTH OF FREE GROCERIES DRAWING HELD EVERY MONTH NO OBLIGATION

SAVON DRUGS