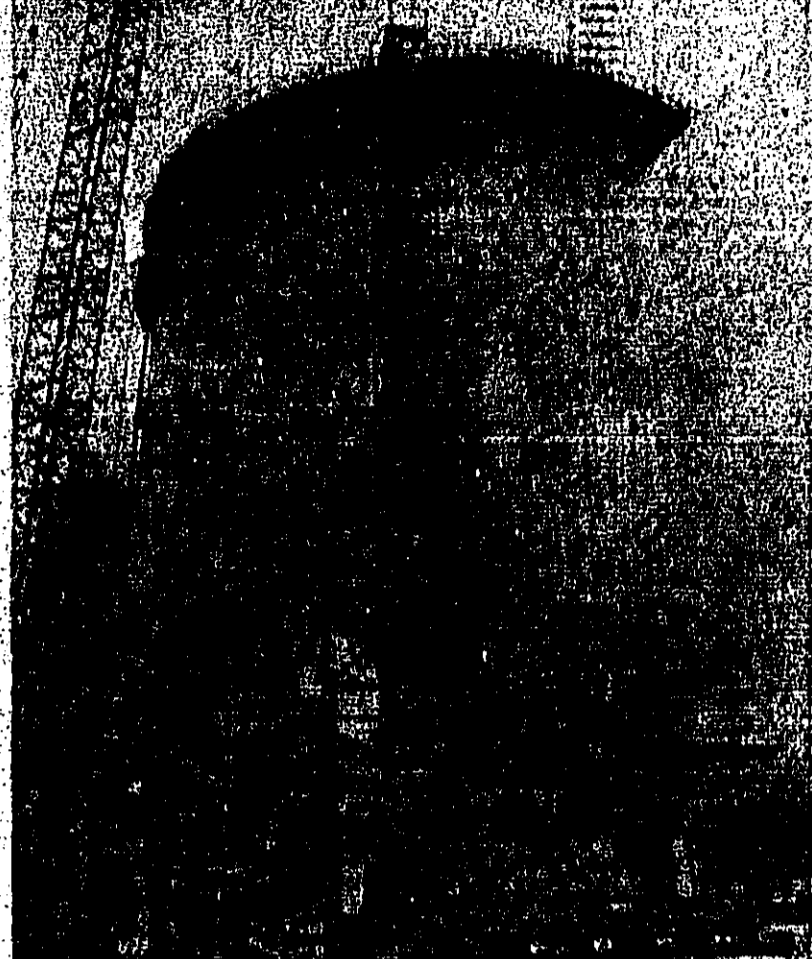


# Nuclear Electricity Here By '86



**NUCLEAR REACTOR NEARS COMPLETION.**  
This huge structure due for completion in January 1986 will serve the Southeast Texas area through the Gulf States Utilities System. The 940-Megawatt facility is located in a subtle turn of the Mississippi River at Saint Francisville about 30 miles north of Baton Rouge.

**EDITORS NOTE:** The following is a Woodville view of the River Bend Nuclear Power Plant located about a mile from the quiet Louisiana city of Saint Francisville. The tour, Thursday, March 3, included Woodville Gulf States District Manager Wyatt Bell and Bossier Editor John Morrison.

By John P. Morrison  
Thomas C. Crouse, Superintendent of Site Construction of the River Bend Nuclear Power Plant located about 267 miles from the Tyler County Courthouse didn't bat an eye Thursday when asked again when the nuclear facility would begin pushing electric wattage across the mighty Mississippi northward to East Texas and Woodville.

"January 1986," Crouse, who is 36 years old, is like most of the peak engineering and construction person-

nel on the now, youth-ful looking and smiling to enjoy their work. The work at this nuclear site construction site seemed to beam whenever a photographer walked by, giving the thumbs up sign.

The total generating capacity of the plant will be 940 megawatts or 940,000 kilowatts. It will produce electricity by allowing uranium pellet nuclear fuel to boil water in a surrounding container.

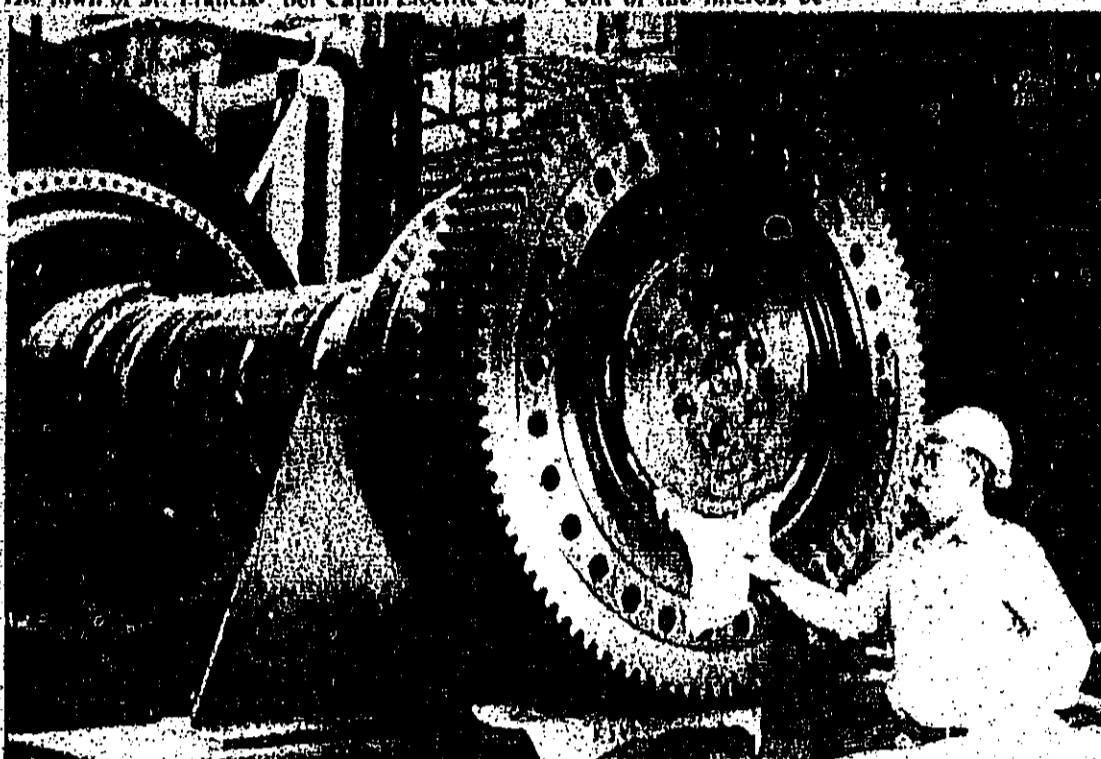
Contractor for the project is Stone and Webster of Cherry Hill, New Jersey.

The plant will entail 94 miles of piping, 5.2 million feet of wiring and use 127.6 million lbs. of steel.

Total manhours for the project will be 52.7 million with a total payroll cost of \$712 million. Total construction cost for the project is \$2.5 billion.

The nuclear power plant sits on a 300-acre

tract in the midst of a villa and West Feliciana Parish about one mile from the Mississippi River.



**WOODVILLE GSF DISTRICT MANAGER** Wyatt Bell inspects the internal generator into which, when steam driven, will help generate electric energy northward to Tyler County. Bell toured the River Bend Nuclear Power Plant Thursday.

See Full Photo Story On  
River Bend Nuclear Reactor  
Pages 6-7A

Serving Tyler County  
Since 1930  
3 Sections, 20 Pages

# THE TYLER COUNTY BOOSTER

Thurs., March 10, 1983  
Woodville, Texas 75979  
Vol. 53, No. 10 '20'

## TYLER COUNTY DATEBOOK:

- Wednesday, March 9
  - 9a.m.-12p.m.: Unemployment-Tyler County Courthouse
  - 12:30p.m.: St. Paul's Episcopal School Registration
  - 3:30-5:30p.m.: Food Preservation Workshop-Wdv. H.S., Rm. 29
  - Woodville Rotary - Wdv. Inn
- Thurs. March 10
  - 9a.m.: Spurger TOPS
  - 9:30a.m.: Bible Study Home of Belle McCamba 806 N. Beech
  - 10a.m.: Woodville Lions - Lion's Den
  - 1:30p.m.: Colmesnell Home Hist. Club-Colum. Comm. Center
  - 7p.m.: Chester School Board Mtg.
  - 7p.m.: Gospel Singing - Holiday Pines
  - 7p.m.: Tyler Co. Rep. Women's Club - Woodville
- Friday March 11
  - 10a.m.-2p.m.: Church Mouse - St. Paul's
  - 4p.m.: Chorister Chur. - First Baptist, Wdv. Latham Springs
  - Camp thru Sat. afternoon
- Saturday March 12
  - 9a.m.-2p.m.: Tyler Co. Baseball Sign-up
  - 9a.m.-3:30p.m.: Free Forestry Tour Res. Rd. 283-3745
  - 10a.m.-6p.m.: Alabama-Coushatta Tourist Season starts
  - 10a.m.: Car Wash - Fairway Park Inn

- 6:30 p.m.: Dogwood Trail Ride Horse Sale/Wdv. Livestock Comm. Co., Lelington Hwy.
- 12:30-4:30p.m.: "Roasted Marsh mellow & Bunch Toast" - Big Thicket Nat. Mon.
- 6:30p.m.: Big Thicket Nightlife Info. St. Regis. Req. 409/246-2237
- Sunday March 13
  - 10a.m.: Single Adult Fellowship & Study - Cobb Mill Bapt. Church
- Monday March 14
  - 9a.m.-5p.m.: Fred Vol. Fire Dept. Garage Sale
  - 10a.m.: Tyler Co. Commissioner's Court
  - 10a.m.: Tyler Co. Retired Teachers Mtg. - Silvers Library
  - 2-6p.m.: Annual Blood Drive - Chester Lions Den
  - 6:30p.m.: Weight Watchers - Wdv. Church of Christ
  - 6:30p.m.: Woodville TOPS - Dr. Swearingen
  - 7p.m.: Chester & Wdv. City Council Mtg.
  - 7:30p.m.: Heritage Club - Club - Children St. Bank
- Tuesday March 15
  - 10a.m.: Church Mouse - St. Paul's
  - 7p.m.: Colmesnell School Board Mtg.
  - 7p.m.: B&PW Citizens St. Bank Community Room
  - 7:30p.m.: Woodville Reading Club



George Jones

## Bond Set In Shooting, Victim Said 'Stable'

A 25 year old Woodville man, Milton Wilson is being held in connection with the early Tuesday morning apparent shotgun shooting of Aubrey Caraway, 36, also of Woodville at a residence located behind the Bell's 7-11 Store at the south-city limits of Woodville.

According to police reports, the incident occurred at around midnight Monday with the police called into the case from the Tyler County Hospital where Caraway had been taken for treatment.

According to investigating officer,

## Singer George Jones Concerned Marries, Settles Here Citizens

Country and Western Singer George Jones tied the knot for the fourth time this past week, marrying Nancy E. Sepulveda, an apparent childhood sweetheart.

The two are settling on a 70 acre tract of land about five miles east of Hwy. 69 on Recreation Road 785 Jones, who was besieged by anti-graph seekers at the Tyler County Courthouse on Friday, said that he was planning to establish a sort of music center where people can come

and sing on Sunday afternoons, according to County Clerk Grace Bossett.

Jones, who is 52, has a sister, Mrs. W. I. McLoggins who resides in Dallas.

## Fred Firemen Garage Sale Set

The Fred Volunteer Fire Department will hold its Spring Community Garage Sale for four weeks beginning March 14. They will begin moving items into the Fire Station on Hwy 92 in Fred on March 7 and are still accepting donations for the sale. During the four weeks, the Community Garage Sale will be open Monday - Saturday from 9 a.m. until 5 p.m., with a drawing to be held each Saturday at noon. The drawing will consist of a nice prize.

They have the largest supply of children's clothes and various items that they have ever had. They have been able to purchase one fire truck and hope to be able to buy another one before the close of the Spring Sale.

This Community Garage Sale is in memory of a very dear friend, Jay Spurlock. He helped with each garage sale. Everyone involved will miss him greatly. Everyone is invited to come to the Garage Sale.

## Caucus Thursday

A non-political, grassroots attempt at forming a Concerned Citizens action chain of communication to our national political leaders will be the thrust of an organizational meeting to be held at the Woodville Inn on Thursday, March 10 at 7 p.m.

Featured speaker for the meeting will be Dean O. Gray, mathematics professor, University of Houston, who will lead (allowing public comment) a discussion on "the evils of excessive monetary interest", how to create a national employment and work agency to eliminate our national unemployment, and how to eliminate the Federal Reserve System which Gray refers to as "A financial Disney World with a lot of glitter and no gold".

Gray will advocate the formation of a citizens group which will allow anybody in the nation to express his voice through any of a group of chapters of concerned citizens made up of open committees formed without chairman. Gray's innovative presentation will examine several ideas. (In his areas of expertise) and then open the group discussion to include anything else the group wants to discuss.

By Tracy Mason, Reporter



# Sidewalk Soundoff

This Week's Question: Do you think Woodville needs a dog pound? Why?

 Yes, I do not like dogs hanging around my yard. I have no dog. Mrs. Bill Barclay City, Woodville	 Sure they do. They bite the kids and dogs. Why have rabies? Sybil Rutto Keller, Donetta	 Yes, I do. There are too many dogs on the streets. John J. Best Bishop, Woodville	 Yes, I think that Woodville needs a dog pound even though I will cost the taxpayers money. I think it would be worth the money to get the strays off the streets. Terrell Wallis Secretary, Woodville	 Yes, stray dogs can be a danger to children and a nuisance to property owners. Pam Willis Probation Officer, Woodville	 Yes, because all of the stray dogs are not only a traffic hazard but a health hazard. Mary Granger Bishop, Woodville
--	---	---	---	--	--

# PERSONAL & FAMILY accent on

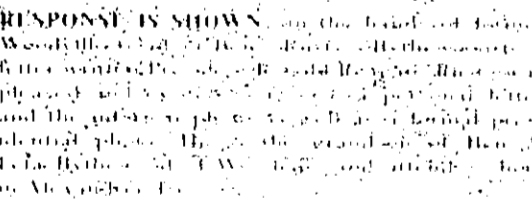


CHILDREN OF THE COURTHOUSE... (Caption text describing the children in the photo above)



## Ivanhoe

... (Text describing Ivanhoe, likely a local news item or announcement)



## Reunion

... (Text describing a reunion event)

## Gun Safety Seminar Set

... (Text describing a gun safety seminar)

**March 1983**  
9:30 - 11:30 am  
Monday & Tuesday  
Only  
**Employment Service**  
283-2589  
1st Baptist Church  
Woodville

## French '53-'54

... (Text describing a French class or event)

**Remember family or friends with Special Occasion. Get Well or Memorial cards.**  
**American Heart Association**  
WE'RE FIGHTING FOR YOUR LIFE  
Special envelopes available at Citizens State Bank and Family Medical Clinic or write Peggy Burton, Box 279, Woodville, 75979.



## Food Preservation Workshop

Mary Sweeten, Foods Nutrition Specialist from Texas A&M University will present a Food Preservation Workshop on March 9th from 10:30-3:30 at the Woodville High School... (Text describing the workshop details)

## Chester Blood Drive

The Chester Blood Drive is held on Monday, March 14, from 2:00-5:00 p.m. at the Chester Senior Center... (Text describing the blood drive)

## Income Tax Time

Annual income tax time means complex start counting up the economic benefits of two salaries... (Text describing income tax preparation)

## Retirees Meet

Tyler County Retirees Club meets at the Lions Den on Tuesday, March 15 at 10 a.m. Bring your favorite canned dish... (Text describing a retiree meeting)

**Preserve Tyler County History With Your Membership In Tyler County Heritage Society**  
(a non-profit public corporation)  
1983 Membership Dues of \$10.00 per person may be mailed to: TCHS, P.O. Box 888, Woodville, TX 75979

## Class Of 1943

A reunion of the 1943 graduating class of Kirby High School is being planned for this summer in Woodville... (Text describing a class reunion)

## Relocation Of Health Office

The Texas Department of Health would like to announce the relocation of their office... (Text describing office relocation)

## Weekly Livestock Report

**CATTLE SALES**

Report on the Woodville Livestock Commission on Hwy. 287 of Texas, March 1 (a.m. 11:30)	
STEEPS:	
300 and under	90.00 to 115.00 cwt.
300 to 400	80.00 to 90.00 cwt.
400 to 500	60.00 to 70.00 cwt.
500 and up	60.00 to 70.00 cwt.
HEDGERS:	
Under 300	75.00 to 85.00 cwt.
300 to 400	65.00 to 75.00 cwt.
400 to 500	55.00 to 65.00 cwt.
500 and up	55.00 to 65.00 cwt.
Cows:	
Light	35.00 to 42.50 cwt.
Light heifers	42.50 to 52.50 cwt.
Light cows	50.00 to 65.00 cwt.
Dark cows	45.00 to 60.00 cwt.
Dark heifers	50.00 to 65.00 cwt.
Dark cows	40.00 to 50.00 cwt.
Dark heifers	50.00 to 75.00 head.
ROGS:	
Top Hogs	45.00 to 55.00
Light Hogs	45.00 to 50.00
Dark Hogs	40.00 to 45.00
Boys	40.00 to 45.00
Boys	27.50 to 35.00

**Bag Sale**  
Feb. 25 - Mar. 15  
Tues. & Fri. 10:00 am - 2:00 pm  
**The Church Mouse**  
Resale Shop  
**St. Paul's Church**  
Hwy. 190 - West

# tyler county

Dee Gibson  
Society Editor



## Busy Hands

Dogwood time in Tyler County means busy hands to make the thousands of paper, plastic, dogwood, water, magnolia and jasmine blossoms used to decorate the Woodville Amphitheater... (Text describing the busy hands)



## Flower Makers

at Holiday Pines Manor for the 1983 Dogwood Pageant are (L-R) Molly Croft, Bonnie Gullatt, Emma Honnert, Floy Moore (Academy Director), Violet Lee, Jewel Lowery, Pearl Swindell, and Roberta Rushing... (Text describing flower makers)



## Woodville Hi Lites!

Music fills the air and around Woodville as rehearsals are in progress for special Easter music... (Text describing Woodville Hi Lites)

## Winners Announced

The Pink Princess of Warren took the Chester-Willing Contest... (Text describing winners)

## Hillister Happenings

Friends of Mrs. Carrie Oates are glad to report that she is at home and on the road to recovery... (Text describing Hillister happenings)

**Azalea Nursery**  
28 Varieties  
Best Selection in Tyler County  
Lots More To See!  
Wholesale & Retail  
JUST OFF 2011  
LOOK FOR SIGN

## Relocation Of Health Office

The Texas Department of Health would like to announce the relocation of their office... (Text describing office relocation)

## Stryker To Speak

Guest speaker for the March 10 meeting of the Tyler County Women's Club will be Melinda Stryker... (Text describing Stryker to speak)

## Birthday Of The Week

Brandon Stephen Crim celebrated his first birthday on March 3, 1983... (Text describing birthday of the week)

**Special In Season FRESH OYSTERS**  
Friday Lunch Only  
CHICKEN 'N' DUMPLINGS  
Share Your News Deadline: Friday 3 pm

# BOOSTER 50 OPINIONS

Get your facts first, then you can distort them as much as you please. Mark Twain

Yours, Theirs, Ours

Thursday, March 10, 1983



### Alan Miller's T-WHEELER

Maybe it's the fact that the bank... Maybe it's the fact that the red... We've got enough trouble worrying... Whatever, a combination of the... Case in point, the Queen of England's visit to the United States...



## A Workable Program

By Dean O. Gray  
In all learning, we assume that certain concepts and ideas are basic... What should a monetary system do? Any high school student that has taken a first year course in economics will tell you that money is a medium of exchange...

### Write A Letter To The Editor

Well, it isn't very often that we... Maybe it's the fact that the red... We've got enough trouble worrying... Whatever, a combination of the... Case in point, the Queen of England's visit to the United States...

Well, OK. Bring the yacht... But let's stick it to Santa Barbara... We don't want to make a lot of hoop... We're having a tough time here... We're having a tough time here...

### Doucette Gas System Help Asked

The Board of Directors of the Doucette Gas Association request as many members as possible to show up for... Men bring your own shovels and tools to work with... Doucette Gas Association

What should a monetary system do? Any high school student that has taken a first year course in economics will tell you that money is a medium of exchange... The purpose of the monetary system is to facilitate the exchange of goods and services...

When we speak of the greatest good for the greatest number, we are talking about the distribution of wealth... The distribution of wealth is a matter of justice and equity... We must find ways to ensure that everyone has access to the resources they need to live and work...

When we speak of the greatest good for the greatest number, we are talking about the distribution of wealth... The distribution of wealth is a matter of justice and equity... We must find ways to ensure that everyone has access to the resources they need to live and work...

When we speak of the greatest good for the greatest number, we are talking about the distribution of wealth... The distribution of wealth is a matter of justice and equity... We must find ways to ensure that everyone has access to the resources they need to live and work...

When we speak of the greatest good for the greatest number, we are talking about the distribution of wealth... The distribution of wealth is a matter of justice and equity... We must find ways to ensure that everyone has access to the resources they need to live and work...

When we speak of the greatest good for the greatest number, we are talking about the distribution of wealth... The distribution of wealth is a matter of justice and equity... We must find ways to ensure that everyone has access to the resources they need to live and work...

# THE TYLER COUNTY BOOSTER

## EDITORIAL PAGE

Editor/Publisher: JOHN L. TOMPKINS  
Business Manager: JOHN L. TOMPKINS  
Advertising Manager: JOHN L. TOMPKINS  
Circulation Director: JOHN L. TOMPKINS

Subscription Rates:  
Tyler County: \$1.00 per copy  
Other Areas: \$1.50 per copy

## "It's Not The Land...It's The Heritage"



W.C. 'Duh' Crew's Jr., wife Iris, son Al and granddaughters Cindy S. and Cheryl A. Crews. W.C. is expecting her third child in about six weeks.

### 25th of A 52 Week Series



By John L. Tompkins  
The money... the land... the heritage... W.C. 'Duh' Crew's Jr. and his wife Iris live on Orange, along with 15-year-old grandson, Cindy Crews Sullivan, in Orange, a mother of six-month-old great-granddaughter, Cheryl Sullivan, the first of the seventh generation of the Crews family in Texas.

W.C. Crews and the Crews family built "Little Golden Gate" suspension bridge crossing William's Creek on family property.



### Hearing Tests Set

Woodville Electronic hearing tests will be given at the Holston area... DR. JOE WESLEY DICKERSON... Wishes to Announce that his office at 1001 Dickerson Drive, Jasper, Tx. is now open on a full time basis.

### SHUGART COUPON

Picture Date: Mon, Mar 14  
Montgomery Ward  
Catalog Agency 100 S. Charlton  
19¢ WALLET SIZE COLOR PORTRAITS  
99¢ Extra charge for GROUPS

### OUR LIMITED WARRANTY ON DIESELS JUST GOT LONGER

For 1983, Chevrolet introduces a new extended "Power-Protection-Plus" limited warranty on diesel engines.

# 30/50,000

USA-1 IS TAKING CHARGE

## Allison Chevrolet

837-2244 283-7605

### Colmesneil

### Have You Heard?

Dr. Mark Haugarth  
Of Greenwood, Louisiana

### The Good News

This Week

# REVIVAL

Evening Services Wed., Thurs., Fri., Sat. At 7 pm

Sunday Morning Service With Dinner On The Grounds

### SPECIAL SINGING EVERY SERVICE

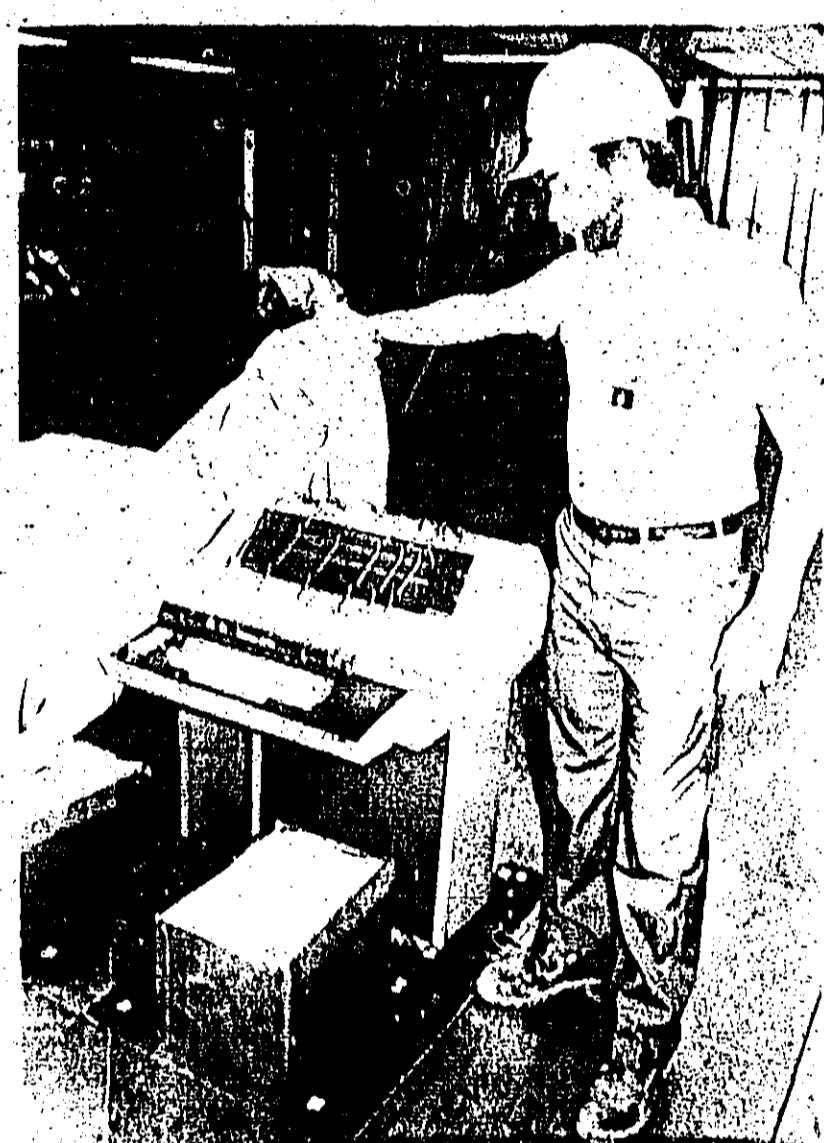
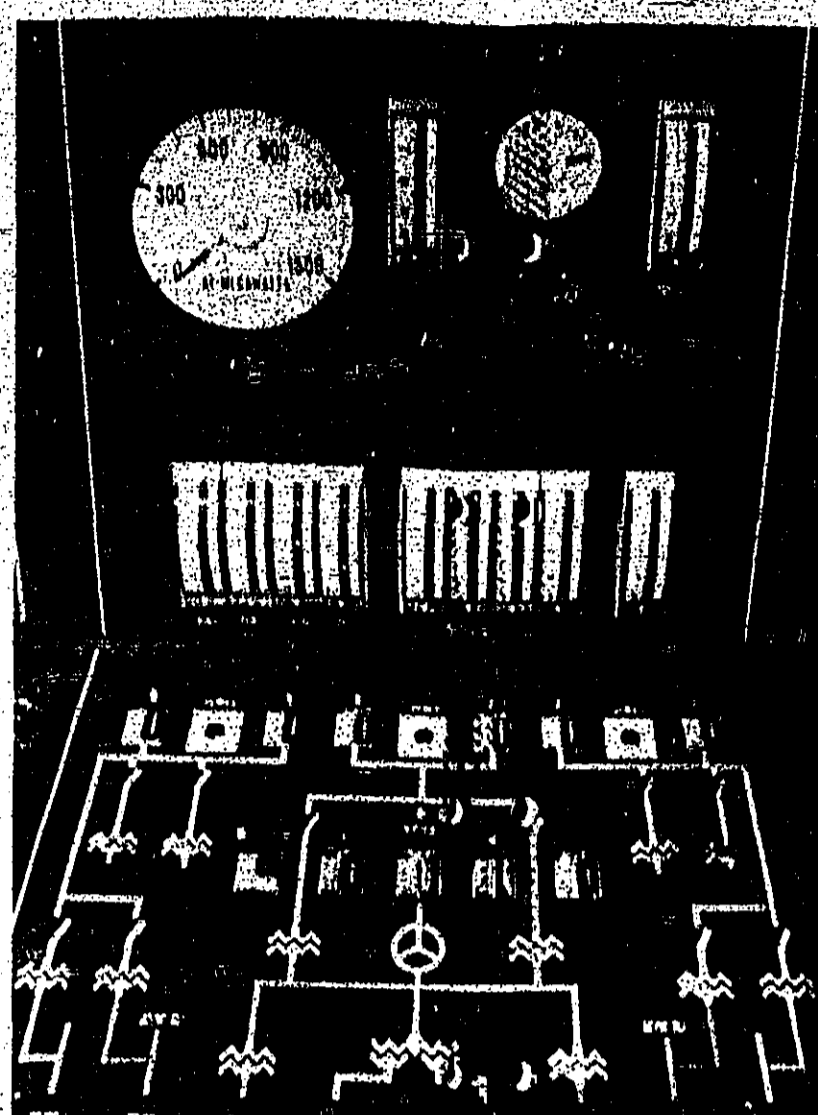
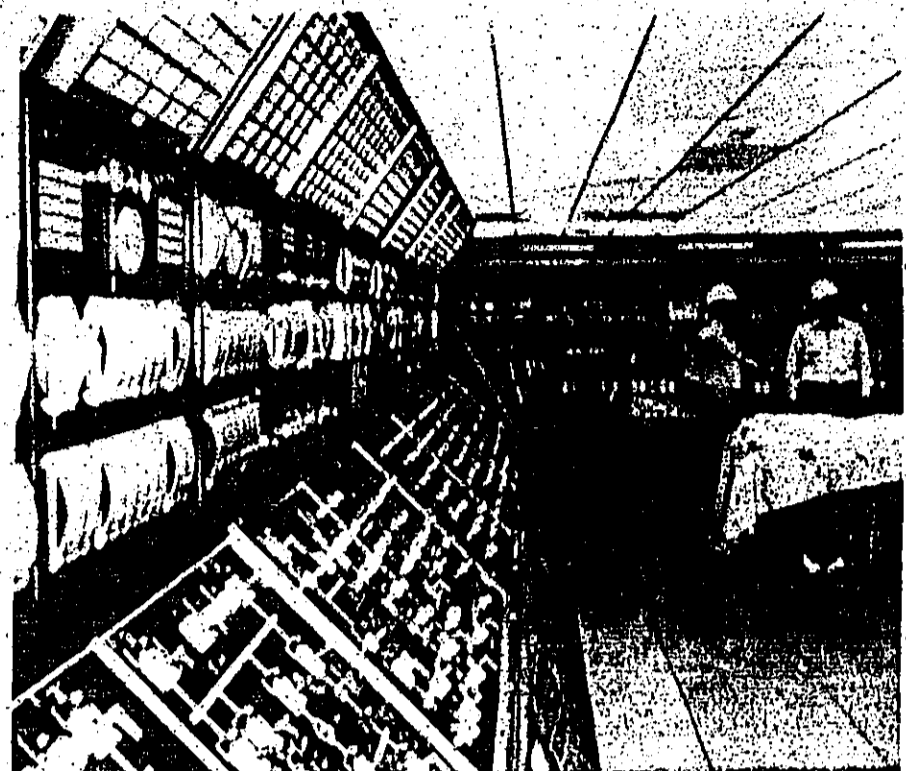
### COME GET YOUR FAITH LIFTED

## Calvary Baptist Church

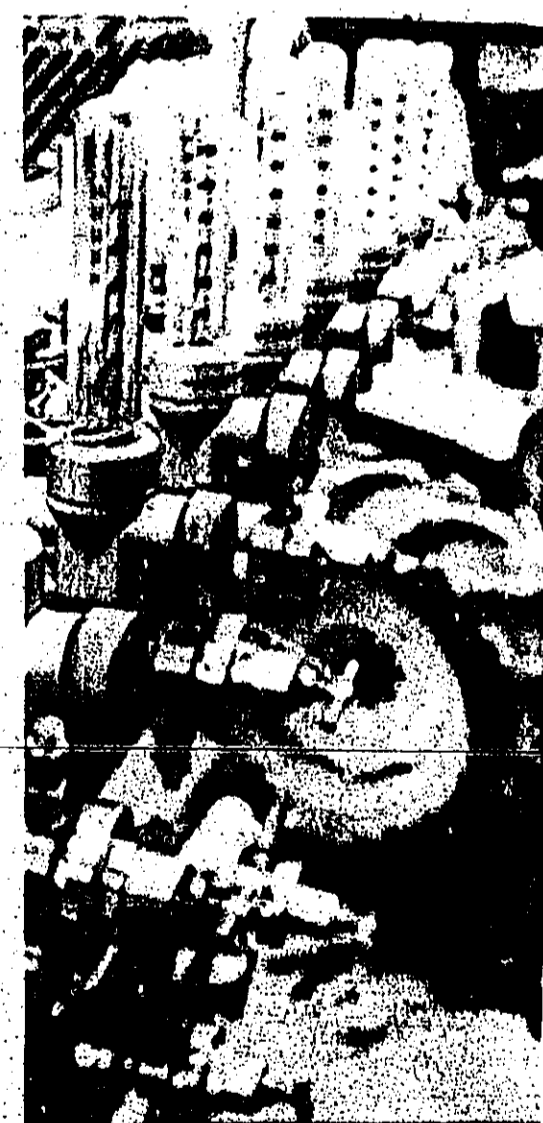
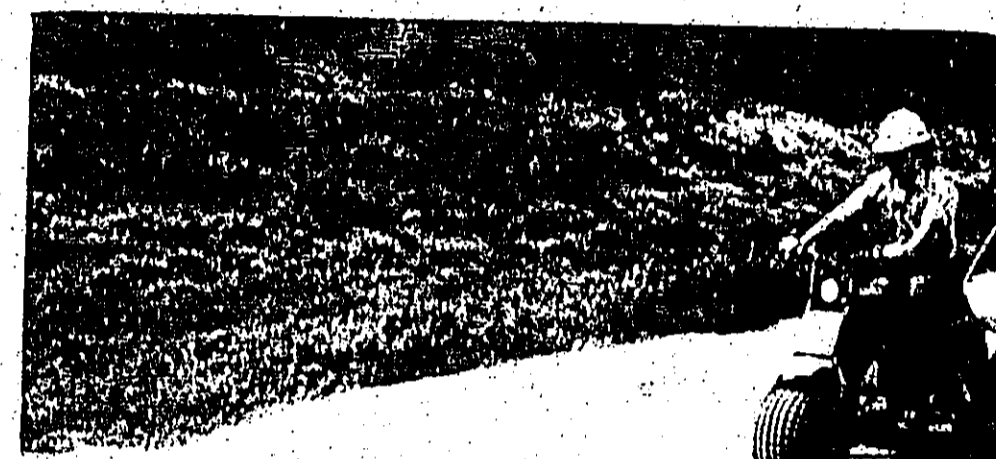
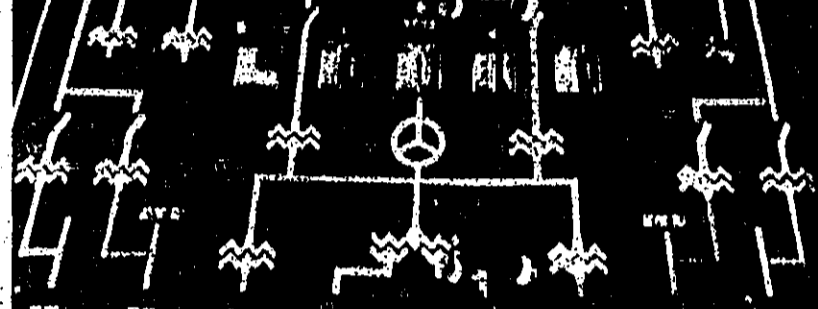
Bro. John Spanhanks, Pastor

Sunday School 9:45 am Sunday Worship Service 11 am

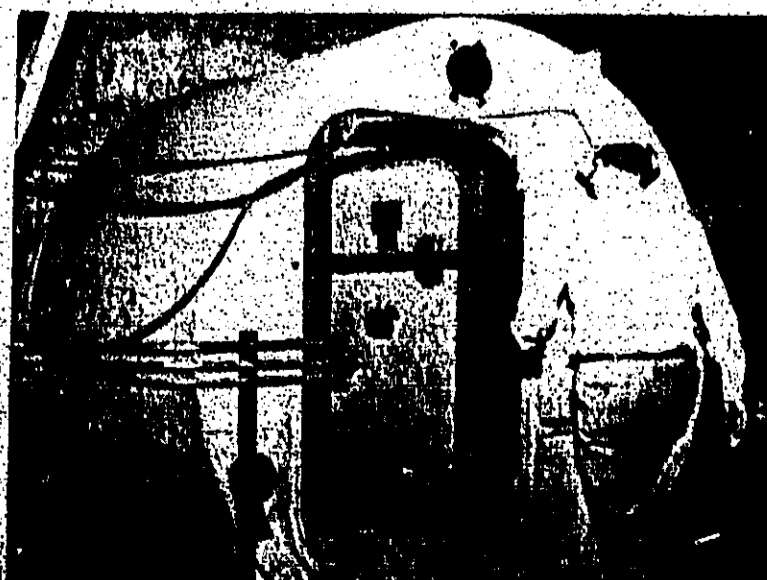
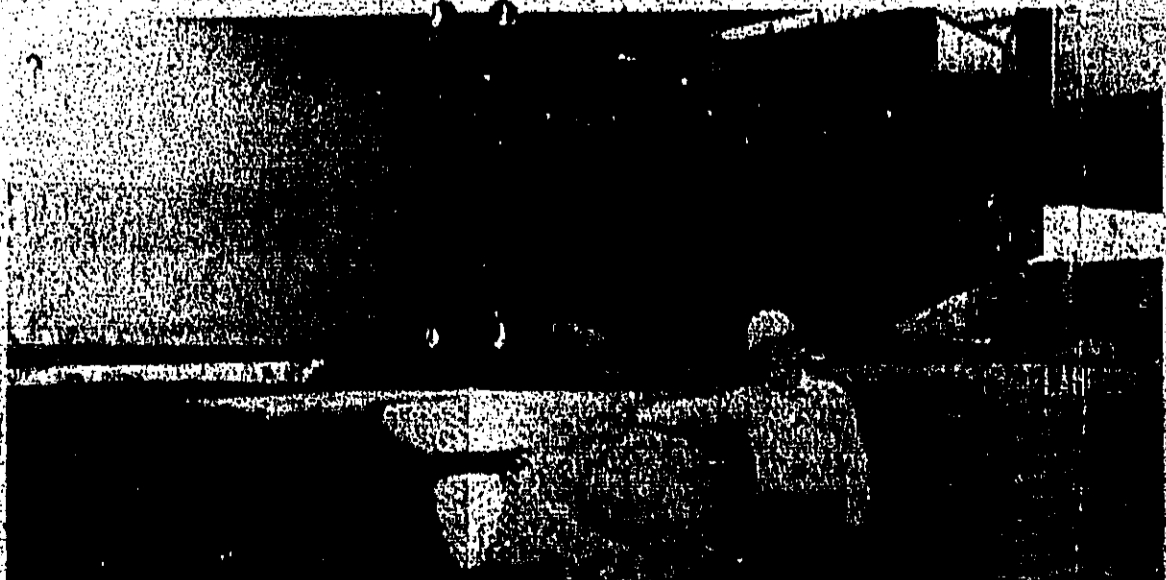
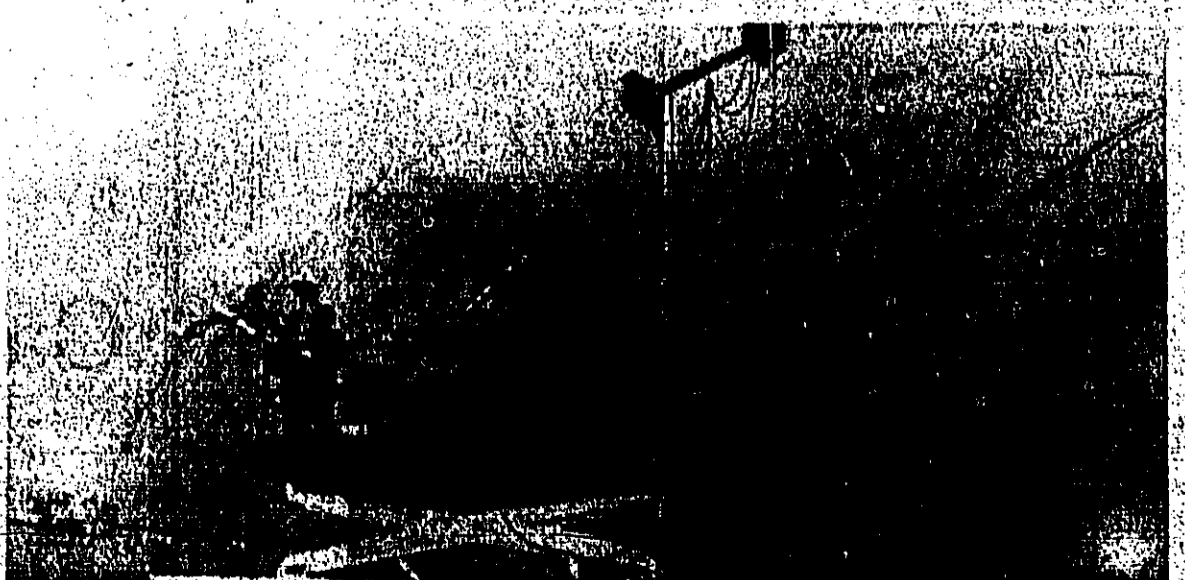
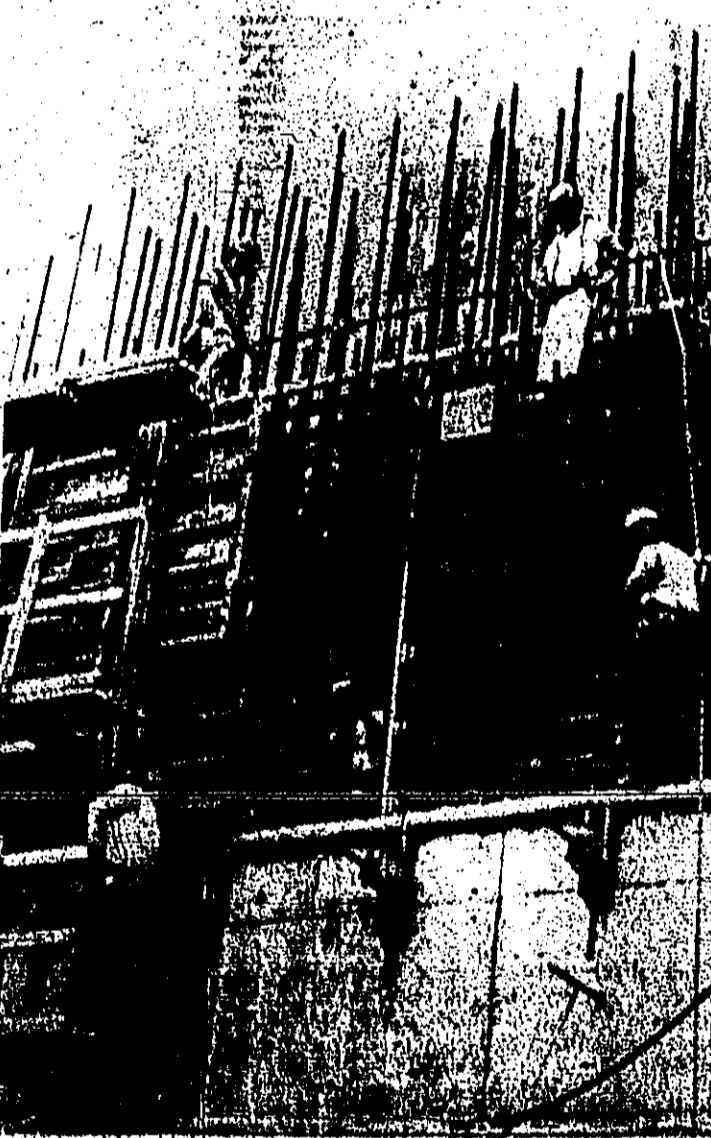
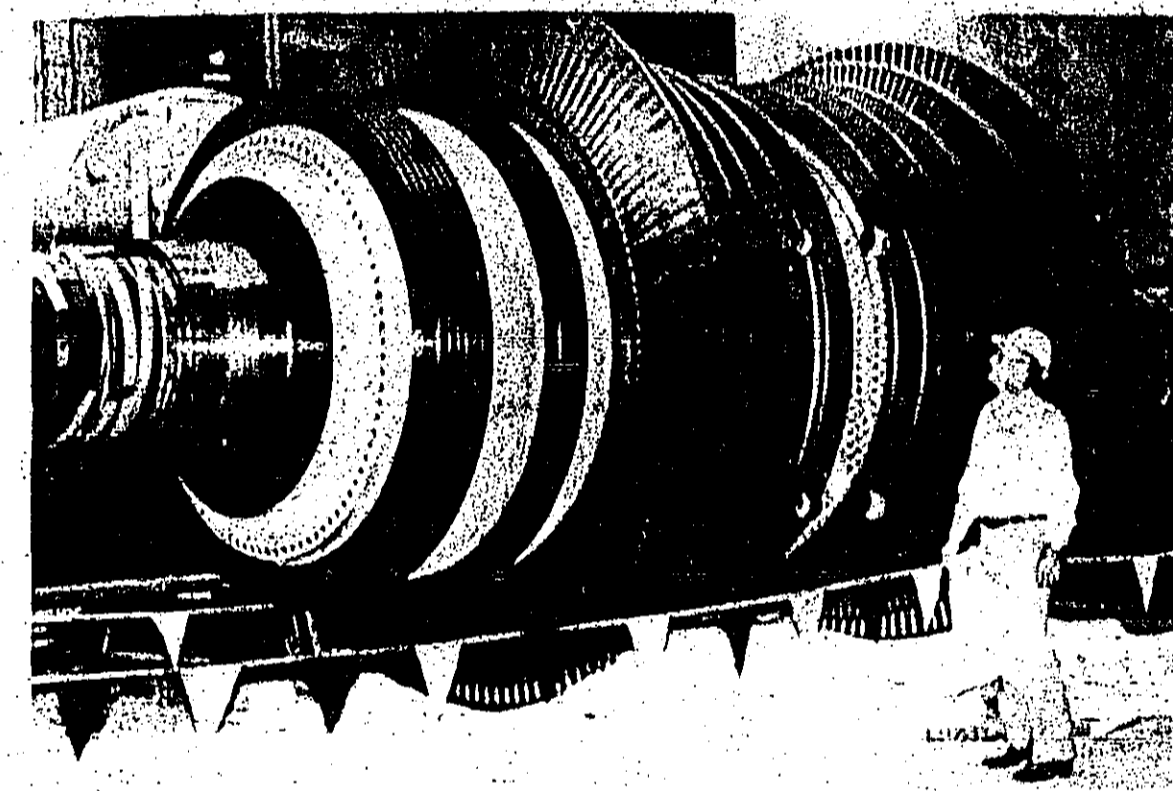
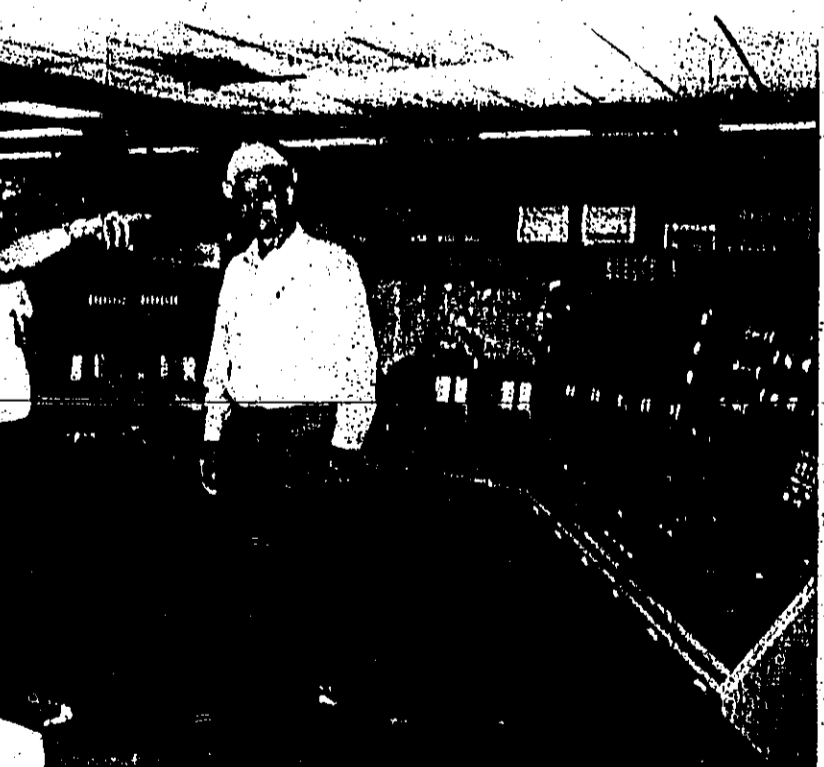
# GSU's River Bend Nuclear Power Plant Should Be "On Line" By January 1986



'Over, Under, Around & Through'



Photos By John Morrison



# Church

**BAPTIST**

**BETHANY BAPTIST CHURCH**  
Colmaneech, Jack A. Butler, pastor. Sunday School 10 a.m., Morning Worship 11 a.m., Evening Worship 6 p.m., Wednesday Prayer Service 6:30 p.m.

**BRICK CREEK BAPTIST**  
R. C. Holland, pastor. Sunday School 10 a.m., Morning Worship 11 a.m., Evening Worship 7 p.m.

**BYBEE BAPTIST CHURCH**  
Warren. Sunday School 9:45 a.m., Worship 11 a.m., Church Training 6 p.m., Evening Worship 7 p.m., Wednesday 2:30 p.m. (GA Arena), R.A. and Mission Prayers 6:30 p.m., W.M.S. 7:30 p.m., Prayer Meeting.

**CAIVARY BAPTIST CHURCH**  
Rev. John Spanbanks, pastor. Sunday School 9:45 a.m., Morning Worship 11 a.m., Training Prayer Meeting 7 p.m., Wednesday Prayer Meeting 7 p.m.

**CAMP ZION BAPTIST CHURCH**  
Emanuel. Rev. L. N. Hunt (Pastor). Sunday School 9:45 a.m., Morning Worship 11 a.m., Prayer Training 7 a.m., Bible Study 7:15 a.m., Church Learning 6 p.m., Mission Brotherhood Meeting 8 p.m., Pastor Meeting Wed. 7 p.m., Senior Citizens 10:30 a.m. Bible Study, 10:30 a.m. (Closed) 2nd & 4th Saturdays, 2nd & 4th Sun. (Closed) 2nd & 4th Saturdays.

**CANE CREEK BAPTIST CHURCH**  
Cherry. G. M. Studdies, pastor. Sunday School 10 a.m., Morning Worship 11 a.m., Church Learning 6 p.m., Evening Worship 7 p.m., Wednesday Prayers 7 p.m.

**CHURCH OF GOD**  
704 & 10th, Sundays of each month. Sunday School 10 a.m., Worship 11 a.m., Pastor, Rev. Ernest Mason. FM 256, fourth west of Colmaneech.

**CHURCH OF GOD**  
Pastor, Rev. Ernest Mason. 704 & 10th, Sunday School 10 a.m., Morning Worship 11 a.m., Church Learning 6 p.m., Evening Prayer Services 7 p.m., Wednesday Prayers 7 p.m.

**CHURCH OF GOD**  
Pastor, Rev. Ernest Mason. 704 & 10th, Sunday School 10 a.m., Morning Worship 11 a.m., Church Learning 6 p.m., Evening Prayer Services 7 p.m., Wednesday Prayers 7 p.m.

**CHURCH OF GOD**  
Pastor, Rev. Ernest Mason. 704 & 10th, Sunday School 10 a.m., Morning Worship 11 a.m., Church Learning 6 p.m., Evening Prayer Services 7 p.m., Wednesday Prayers 7 p.m.

**CHURCH OF GOD**  
Pastor, Rev. Ernest Mason. 704 & 10th, Sunday School 10 a.m., Morning Worship 11 a.m., Church Learning 6 p.m., Evening Prayer Services 7 p.m., Wednesday Prayers 7 p.m.

**CHURCH OF GOD**  
Pastor, Rev. Ernest Mason. 704 & 10th, Sunday School 10 a.m., Morning Worship 11 a.m., Church Learning 6 p.m., Evening Prayer Services 7 p.m., Wednesday Prayers 7 p.m.

**CHURCH OF GOD**  
Pastor, Rev. Ernest Mason. 704 & 10th, Sunday School 10 a.m., Morning Worship 11 a.m., Church Learning 6 p.m., Evening Prayer Services 7 p.m., Wednesday Prayers 7 p.m.

**CHURCH OF GOD**  
Pastor, Rev. Ernest Mason. 704 & 10th, Sunday School 10 a.m., Morning Worship 11 a.m., Church Learning 6 p.m., Evening Prayer Services 7 p.m., Wednesday Prayers 7 p.m.

**CHURCH OF GOD**  
Pastor, Rev. Ernest Mason. 704 & 10th, Sunday School 10 a.m., Morning Worship 11 a.m., Church Learning 6 p.m., Evening Prayer Services 7 p.m., Wednesday Prayers 7 p.m.

**CHURCH OF GOD**  
Pastor, Rev. Ernest Mason. 704 & 10th, Sunday School 10 a.m., Morning Worship 11 a.m., Church Learning 6 p.m., Evening Prayer Services 7 p.m., Wednesday Prayers 7 p.m.



Organist Beverly Reese

## First Baptist New Organ

A new three manual Rodgers 900 model electric organ was recently installed in the sanctuary of First Baptist Church of Woodville. The organ, replacing a smaller out-dated organ, has the option of being pipe-organized at a later date with nine ranks of pipes. An organ dedication concert will be held in the near future, date to be announced.

## Annual Meeting

Camp Zion Baptist church of Donnetts will hold their 41st Annual Meeting beginning Saturday, March 19, at 7:30 p.m. and concluding on Sunday, March 20 with a 2:30 p.m. session. Rev. Will Elmbrick, pastor of Miss Hill Baptist Church, will preach (the church), Rev. J. Hunt is the pastor, Rev. J. Hunt is the pastor, Rev. J. Hunt is the pastor.

## Share Your Church News In By Friday, 5 p.m.

Wildlife: God's Wonders. If you would like to learn about the miracle of God's creation, you need look no farther than the animal kingdom for some incredible examples of it. From the titanic insect to the largest behemoth that ever trod the earth, from the fish gliding through the waters to the birds soaring overhead in defiance of gravity, all of God's creatures have been endowed with the ability to survive and adapt themselves to their environments. Including us, God made and loved all earthly creatures, and we must respect and preserve them in the best of our ability. We can learn much about the world He gave us just by studying the wildlife around us. Submit your news to our House of Worship in order to understand the real meaning of it in terms of love for one another, and of life itself.

## Gospel Meeting In Progress

Attendance has been good at the gospel meeting being held at the Woodville Church of Christ on Friday, March 11, 1983. Steve McIntosh is the evangelist and services are at 7 p.m. tonight, Thursday and Friday nights. Following the concluding service on Friday is a dinner fellowship which will be held at 7:30 p.m. on Saturday.

## Sugar Eggs

Sugared and artistically decorated Easter symbol, sugar eggs, a project of parishioners of Our Lady of the Pines parishes, Woodville, are now being taken for special personalized eggs and sent to family and friends.

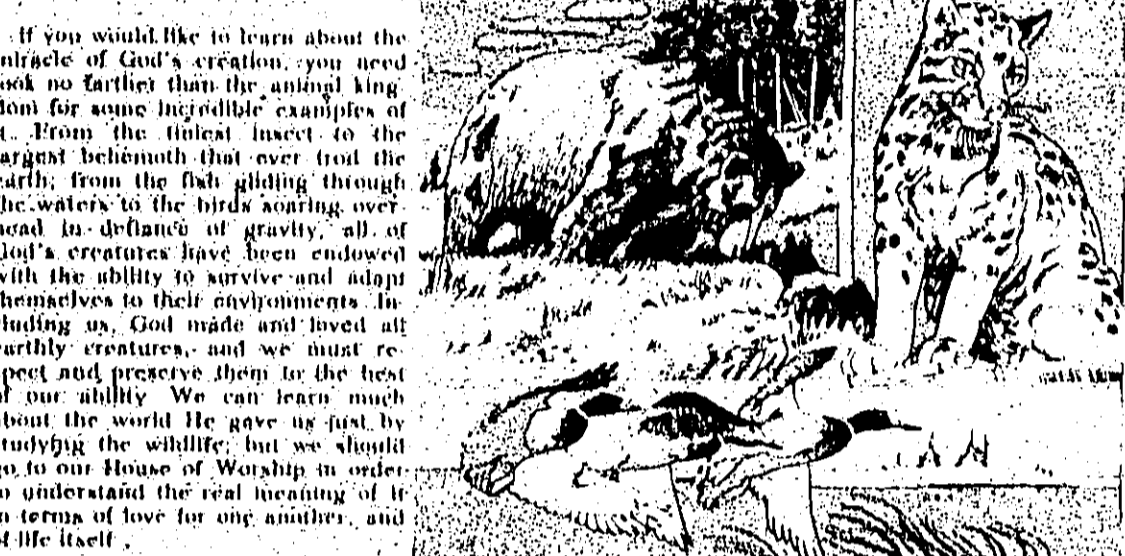
## Car Wash

A car wash will be held on the last car sponsored by the Gospel Lightship on Thursday, March 17, from 10 a.m. to 5 p.m. Car wash only. Lightship on Thursday, March 17, from 10 a.m. to 5 p.m.

## Autograph Party For Best Book

The Tyler County Historical Commission is sponsoring an autograph party for the "Best Book" award. The award is given to the author of the best book published in the United States in the year 1982. The award is given to the author of the best book published in the United States in the year 1982. The award is given to the author of the best book published in the United States in the year 1982.

## Wildlife: God's Wonders



## Marriage License

Claude Jackson and Allene Lamar Matton, both of Woodville, Texas, were granted a marriage license on March 8, 1983, by Rev. James H. Best, pastor of First Baptist Church, Woodville.

## New Granddaughter

Antonia Jo Davis was born to Mr. & Mrs. L. D. Davis on February 27, 1983, at 7:15 a.m. at the Woodville Baptist Hospital, Woodville, Texas. She weighs 7 lbs. 8 oz. and is 19 inches long.

## Son Arrives

Robin Scot Mason, son of Virginia Dahlgren and Mr. & Mrs. Robin Scot Mason, was born on February 27, 1983, at 7:15 a.m. at the Woodville Baptist Hospital, Woodville, Texas. He weighs 7 lbs. 8 oz. and is 19 inches long.

## OBITUARIES

**FANNIE JENKINS**. Funeral services for Fannie Jenkins, 91, were held Friday, March 4, 1983, at 2 p.m. at the First Baptist Church of Sprunger with Rev. Linn Kirkland officiating and burial at Turner Branch Cemetery.

Woodville Inn Motel 12 Route 104 Woodville, Texas 77992 783-3777	Kenneth Gerogo Real Estate "Selling Tyler County" Woodville, TX 783-3777
Brookshire Bros. Woodville 783-2555	Woodville Convalescent Center 102 N. Beach 783-2555
Magnolia Drive-In Grocery Woodville 547-3330	Davis Food Market 783-3330
Knapp Ford Sales, Inc. Tom Knapp, Pres. 104 Pine Street Res. 283-5310 283-2526	Allison Chevrolet, Inc. Colmaneech 283-7605 837-2244

## Church Directory and News Sponsored by the Above Merchants

Pray For Patience

Merle Childress 283-2481

Expansion SALE  
Clearing out duplicate books  
5 for \$1.00  
OFFICE SUPPLY CENTER

# Services

**BAPTIST**

**SOUTH SPURGER BAPTIST CHURCH**  
Brother Larry Hale, pastor. Sunday School 10 a.m., Morning Worship 11 a.m., Evening Service 6 p.m., and Evening Worship 6:45 p.m., Church actively groups meet every Monday after school.

**SUNSHINE MISSIONARY BAPTIST CHURCH**  
Located FM 1943 Warren, Pastor, M. O. Frederick. Services every Sunday 10 a.m., Evening Service 6 p.m.

**PUR VINE BAPTIST CHURCH**  
1 mile east of Donnetts. Sunday School 9:45 a.m., Morning Worship 11 a.m., Lord's Supper Sunday 6:30 p.m., Monday Mission 4 p.m., Tuesday WYCA 6:30 p.m., Wednesday Prayer Meeting, teachers 7 p.m.

**VICTORY BAPTIST CHURCH**  
1104 East of Donnetts. Sunday School 9:45 a.m., Morning Worship 11 a.m., Lord's Supper Sunday 6:30 p.m., Monday Mission 4 p.m., Tuesday WYCA 6:30 p.m., Wednesday Prayer Meeting, teachers 7 p.m.

**WOODVILLE MISSIONARY BAPTIST CHURCH**  
Rev. Smith, pastor. Sunday School 10 A.M., Morning Worship 11 a.m., Bible Study 6 p.m., Evening Worship 7 p.m., Wednesday Prayer Meeting 7 p.m.

**NON-DEMONINATIONAL**

**GOSPEL LIGHTSHIP CHURCH**  
Located one mile east of Woodville on Town Blvd. Rev. J. Hunt, pastor. Sunday School 9:45 a.m., Morning Worship 11 a.m., Church Learning 6 p.m., Evening Prayer Services 7 p.m., Wednesday Prayers 7 p.m., Pastor, Dr. Gary Cox.

**HAMPTON FUEL GOSPEL CHURCH**  
Rev. James T. Lovins, pastor. Services Sunday School 10 a.m., Morning Worship 11 a.m., Sunday night 7 p.m., Wednesday night 7 p.m., 7 miles west of Cherter on Hwy 287.

**WARRIUM UNITED METHODIST CHURCH**  
Cherry on Hwy 287. Services Sunday School 10 a.m., Morning Worship 11 a.m., Sunday night 7 p.m., Thursday 7 p.m. Outreach pastor, V. Schiel.

**METHODIST**

**CADI MEMORIAL METHODIST CHURCH**  
Rev. David Hanks, pastor. Worship Services 11 a.m. and Evening 6 p.m., Church School 10 a.m., Bible Study 7 p.m. (each Wednesday) Hope Service 11 a.m. (1st through 3rd).

**WARRIUM UNITED METHODIST CHURCH**  
Services Sunday 10 a.m. and 6 p.m., Wed. 7 p.m., 7 miles east of Woodville on Hwy 190. Rev. John M. Keen, pastor. 283-7849.

**WARRIUM UNITED METHODIST CHURCH**  
Rev. Hal Finlayson, pastor. Services 10:15 a.m., Morning Worship 9 a.m., Sunday School 9:45 a.m., Morning Worship 11 a.m.

**WOODVILLE UNITED METHODIST CHURCH**  
Jack Worham, pastor. Sunday School 9:45 a.m., Morning Worship 10:30 a.m., U.M.W.F. Meeting 5:30 p.m.

**LATTER DAY SAINTS**

**CHURCH OF JESUS CHRIST OF LATTER DAY SAINTS**  
Fred. Sunday Morning Services 8:30-9:45 a.m., Women's Relief Society 10:11 a.m., Sunday School and Priesthood 11:12 noon. Sacrament Meeting held in Frank's Branch. Cemetery Chapel, Branch President V. H. Segrest.

**CHURCH OF JESUS CHRIST OF LATTER DAY SAINTS**  
Woodville. Priesthood 11 a.m., Sunday School 10 a.m., Sacrament Meeting 9:15 a.m. Presently, Bishop Noah Leo Crosby.

**PENTECOSTAL**

**FIRST PENTECOSTAL CHURCH**  
Fred. Services Saturday 2 p.m., Sunday 10 a.m. and 7 p.m.; Wednesday 7 p.m. Pastor S. E. Knighton.

**SPURGER UNITED PENTECOSTAL CHURCH**  
Sunday School 10 a.m., Sunday night 7 p.m., Bible Study 7:30 p.m., Wednesday Bible Study 7 p.m. Pastor J. H. Wallace.

**WARRIUM UNITED PENTECOSTAL CHURCH**  
Sunday School 10 a.m., Sunday night 7 p.m., Bible Study 7:30 p.m., Wednesday night 7 p.m., Pastor C. B. Davis.

**CHURCH OF THE NAZARENE**  
Rev. J. G. Wells, pastor. Worship Services 10-11:30 a.m., Sundays at Woodville Inn. 283-5420.

**amen.**

A & M Motor Co., Inc. 783-2514

Southeast Texas Savings & Loan 283-3747

Woodville 783-3397

Lodge 283-3397

Jarrold's Pharmacy 205 S. Magnolia 283-2550

Childress Monument Works  
Monuments, Markers, Granite & Cement Copies. Also Death Dates.  
Merle Childress 283-2481

Expansion SALE  
Clearing out duplicate books.  
5 for \$1.00  
OFFICE SUPPLY CENTER

### Woodville Wins UIL Meet

The 18-1A Junior High Schools held their University Interscholastic League meet at Woodville Middle School on Tuesday and Thursday, March 8 and 9.

Woodville 6th grade won second place. 7th grade won first place and 8th grade won first place. Woodville Middle School won overall all championship with 210 points, Newcom with 200 points and 130 points and Creston with 110 points.

Results of each event are as follows:

**6th Grade**  
 1st: Alyson  
 2nd: Amber  
 3rd: Amber  
 4th: Amber  
 5th: Amber  
 6th: Amber  
 7th: Amber  
 8th: Amber  
 9th: Amber  
 10th: Amber  
 11th: Amber  
 12th: Amber

**7th Grade**  
 1st: Amber  
 2nd: Amber  
 3rd: Amber  
 4th: Amber  
 5th: Amber  
 6th: Amber  
 7th: Amber  
 8th: Amber  
 9th: Amber  
 10th: Amber  
 11th: Amber  
 12th: Amber

**8th Grade**  
 1st: Amber  
 2nd: Amber  
 3rd: Amber  
 4th: Amber  
 5th: Amber  
 6th: Amber  
 7th: Amber  
 8th: Amber  
 9th: Amber  
 10th: Amber  
 11th: Amber  
 12th: Amber

### Jacket Jive

The Chester, HIA and LFA attached the Houston Elementary School in a long-term economic plan.

The Houston Elementary School is a long-term economic plan. The Houston Elementary School is a long-term economic plan. The Houston Elementary School is a long-term economic plan.

### Woodville High Band Wins Record Number Of Awards

Woodville High Band won a record number of awards at the 1983 UIL State Solo and Ensemble Contest at West Orange, Middle School Friday, Feb. 18. Thirty-five schools attended.

First division medals for solos were awarded as follows:  
 Flute: Oleta Kline  
 Clarinet: Leo Anne Accattolone, Lisa Falco, Melissa Holgren, Pam Johnson, Lisa Jones, Tracy Odum, Chantel Odum  
 Saxophone: Debra Ann Adams, Tammy Adams, Lisa Boat, Laren Deane, Becky Hollman

First division medals for ensembles were awarded to:  
 Flute Trio: Becky Hollman, Shanna McCallister, Laren Deane  
 Clarinet Trio: Leo Anne Accattolone, Lisa Falco, Melissa Holgren, Pam Johnson, Lisa Jones, Tracy Odum, Chantel Odum

### Warrior Whoop

Congratulations to Cindy Reese, our Warren Dogwood Princess. The ladies-in-waiting have yet to be decided, but we wish Sharon Wells, Angela West, and Jennifer Knight. Cindy Moore luck in being chosen.

The junior class held a volleyball game on Wednesday, March 2. The game was won by the high school faculty and the juniors and seniors. The high school faculty was victorious, but they were in turn defeated by the junior high faculty. The game was held in order to make money for the upcoming junior-senior prom, and Coach Padgett, a junior class sponsor, estimated that the class made approximately \$500.

### Bulldog Growls

Last week the elementary sponsored a "Jump Rope for Heart" event. The event was a success and the money raised will go to the American Heart Association. The event was held on Wednesday, March 2, and was held in the gymnasium.

### Colmesneil School Honor Roll

- Honor Roll**
- 11th: Vision Mitchell
  - 10th: All A's: Jada Kitchener, Wanda Jackson, Gary A. & J. B. Andy Spears, All A's: J. B. Andy Spears, All A's: J. B. Andy Spears, All A's: J. B. Andy Spears
  - 9th: All A's: Al Davis, All A's: J. B. Andy Spears, All A's: J. B. Andy Spears, All A's: J. B. Andy Spears
  - 8th: All A's: J. B. Andy Spears, All A's: J. B. Andy Spears, All A's: J. B. Andy Spears, All A's: J. B. Andy Spears
  - 7th: All A's: J. B. Andy Spears, All A's: J. B. Andy Spears, All A's: J. B. Andy Spears, All A's: J. B. Andy Spears
  - 6th: All A's: J. B. Andy Spears, All A's: J. B. Andy Spears, All A's: J. B. Andy Spears, All A's: J. B. Andy Spears
  - 5th: All A's: J. B. Andy Spears, All A's: J. B. Andy Spears, All A's: J. B. Andy Spears, All A's: J. B. Andy Spears
  - 4th: All A's: J. B. Andy Spears, All A's: J. B. Andy Spears, All A's: J. B. Andy Spears, All A's: J. B. Andy Spears
  - 3rd: All A's: J. B. Andy Spears, All A's: J. B. Andy Spears, All A's: J. B. Andy Spears, All A's: J. B. Andy Spears
  - 2nd: All A's: J. B. Andy Spears, All A's: J. B. Andy Spears, All A's: J. B. Andy Spears, All A's: J. B. Andy Spears
  - 1st: All A's: J. B. Andy Spears, All A's: J. B. Andy Spears, All A's: J. B. Andy Spears, All A's: J. B. Andy Spears

### Big Bass Open Tournament

The Pleasant, Texas, in less than two years, the Texas Bass Association has become the premier bass fishing organization in the State of Texas, and the Texas Bass Association has recently announced the largest bass tournament in the history of Texas bass fishing, the Texas Bass Association's 1983 Open Bass Tournament. The tournament will be held in the State of Texas, and the Texas Bass Association has announced that the tournament will be held in the State of Texas, and the Texas Bass Association has announced that the tournament will be held in the State of Texas.

### Eagles Nest

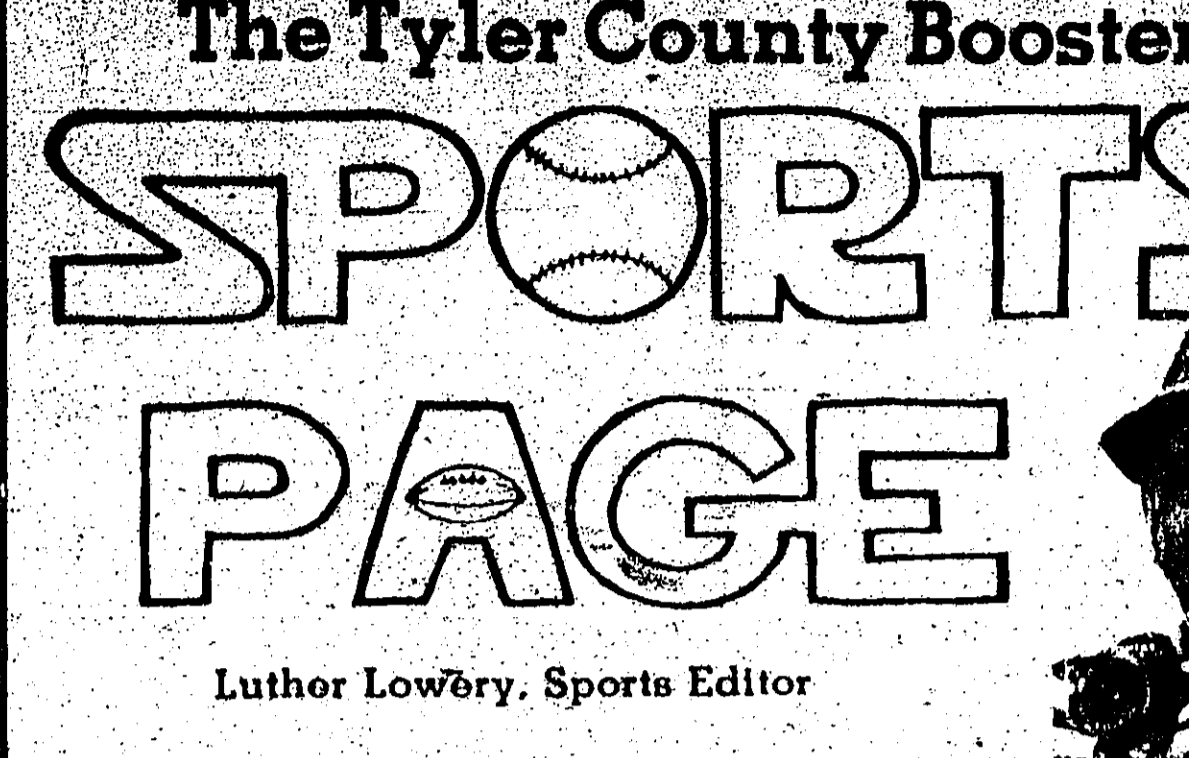
The yearbook staff and 1983 Grand look good to Julie Jones, Angie Rogers, Donna Kinross, and Beth Stafford as they will be judged on Thursday, March 10, to determine the Ladies in Waiting.

The yearbook staff and 1983 Grand look good to Julie Jones, Angie Rogers, Donna Kinross, and Beth Stafford as they will be judged on Thursday, March 10, to determine the Ladies in Waiting.

### Woodville Bass Club

The Woodville Bass Club is holding a tournament on Saturday, March 12, at the Woodville Middle School. The tournament will be held in the State of Texas, and the Woodville Bass Club has announced that the tournament will be held in the State of Texas, and the Woodville Bass Club has announced that the tournament will be held in the State of Texas.

### The Tyler County Booster Sports Page



Luther Lowery, Sports Editor

### Silsbee Wins Woodville Baseball Tournament

The Woodville Invitational Baseball Tournament was held at Herring Park on Thursday and Saturday with Silsbee winning first place by defeating Woodville by a score of 4-2 in the final. Woodville won third place by whipping Livingston 7-0 in extra innings.

Results of all the games are:  
 1st game: Livingston 11, Hamshire 11  
 2nd game: Livingston 11, Hamshire 11  
 3rd game: Livingston 11, Hamshire 11  
 4th game: Livingston 11, Hamshire 11  
 5th game: Livingston 11, Hamshire 11  
 6th game: Livingston 11, Hamshire 11  
 7th game: Livingston 11, Hamshire 11  
 8th game: Livingston 11, Hamshire 11  
 9th game: Livingston 11, Hamshire 11  
 10th game: Livingston 11, Hamshire 11

### Lake Area Outdoor Report

The weather is still enough to handle the boat and sure enough that to cheer the fish that has either been too cold, too windy or raining for most fishermen to get out on the lake. It has been pretty good, but we didn't have any big ones but did have several two pound fish. We fished so far back in the creek and woods that the water couldn't believe what was going on. You could see the bottom of the lake lots of the time. We even saw bass swimming around in front of the boat. We caught most of them on grape worms. We caught one on a splitter bait and one on a spinner bait. We caught one on a spinner bait and one on a spinner bait. We caught one on a spinner bait and one on a spinner bait.

### Fishing Report

The weather is still enough to handle the boat and sure enough that to cheer the fish that has either been too cold, too windy or raining for most fishermen to get out on the lake. It has been pretty good, but we didn't have any big ones but did have several two pound fish. We fished so far back in the creek and woods that the water couldn't believe what was going on. You could see the bottom of the lake lots of the time. We even saw bass swimming around in front of the boat. We caught most of them on grape worms. We caught one on a splitter bait and one on a spinner bait. We caught one on a spinner bait and one on a spinner bait. We caught one on a spinner bait and one on a spinner bait.

### Hunting and Lying

The weather is still enough to handle the boat and sure enough that to cheer the fish that has either been too cold, too windy or raining for most fishermen to get out on the lake. It has been pretty good, but we didn't have any big ones but did have several two pound fish. We fished so far back in the creek and woods that the water couldn't believe what was going on. You could see the bottom of the lake lots of the time. We even saw bass swimming around in front of the boat. We caught most of them on grape worms. We caught one on a splitter bait and one on a spinner bait. We caught one on a spinner bait and one on a spinner bait. We caught one on a spinner bait and one on a spinner bait.

### Woodville Bass Club

The Woodville Bass Club is holding a tournament on Saturday, March 12, at the Woodville Middle School. The tournament will be held in the State of Texas, and the Woodville Bass Club has announced that the tournament will be held in the State of Texas, and the Woodville Bass Club has announced that the tournament will be held in the State of Texas.



Woodville High Band Solo - First Place Winners



Woodville Jr. High Band Wins 68 Medals



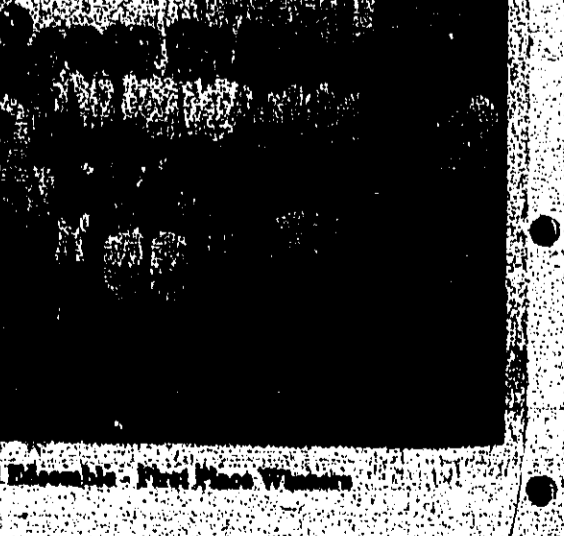
Woodville High Band Brass Ensemble - First Place Winners



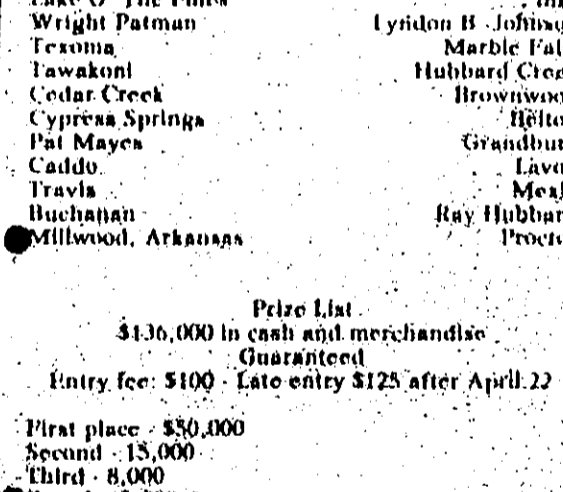
Woodville High Band Solo - First Place Winners



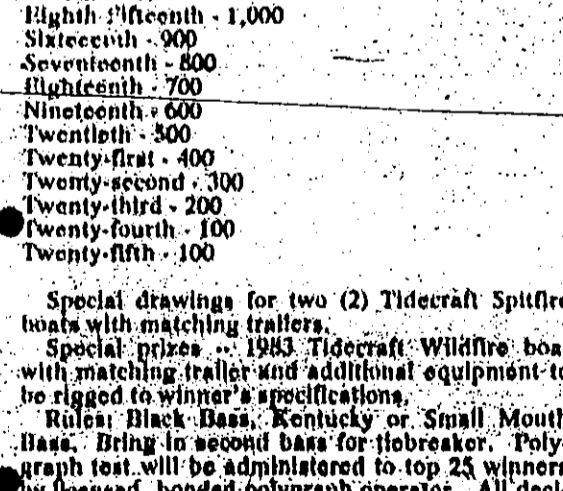
Woodville High Band Brass Ensemble - First Place Winners



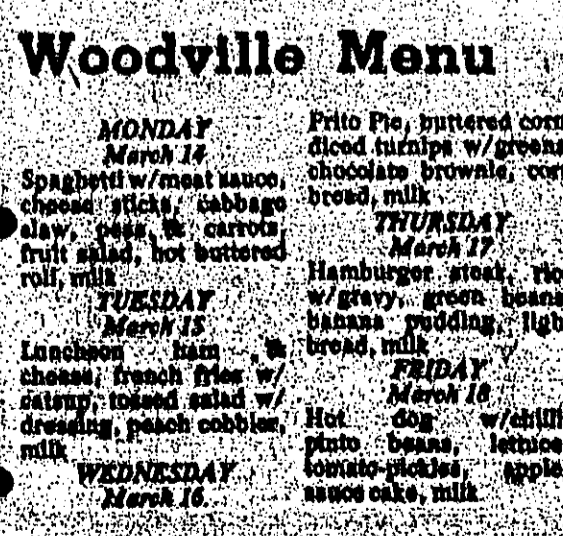
Woodville High Band Brass Ensemble - First Place Winners



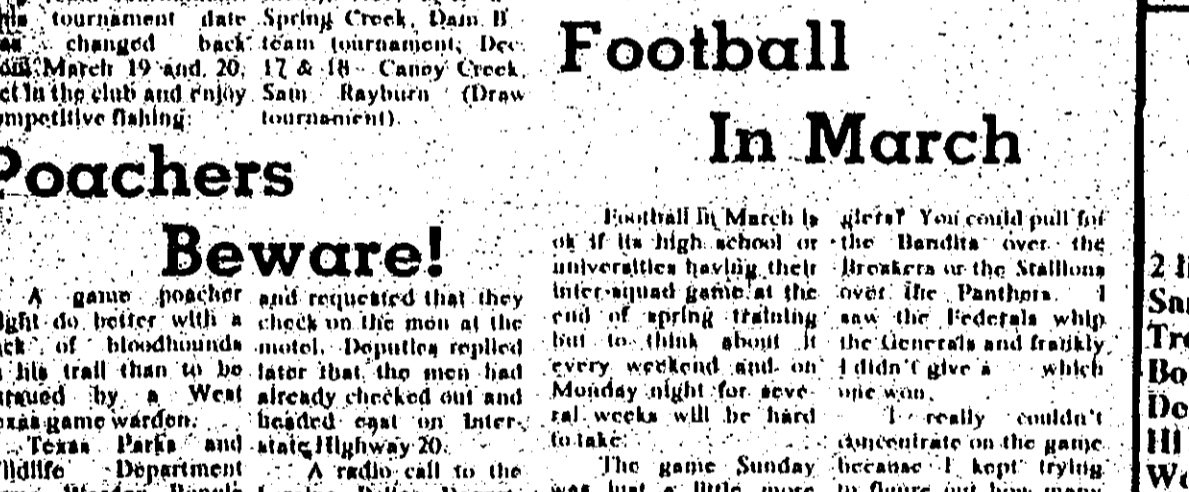
Woodville Bass Club Members



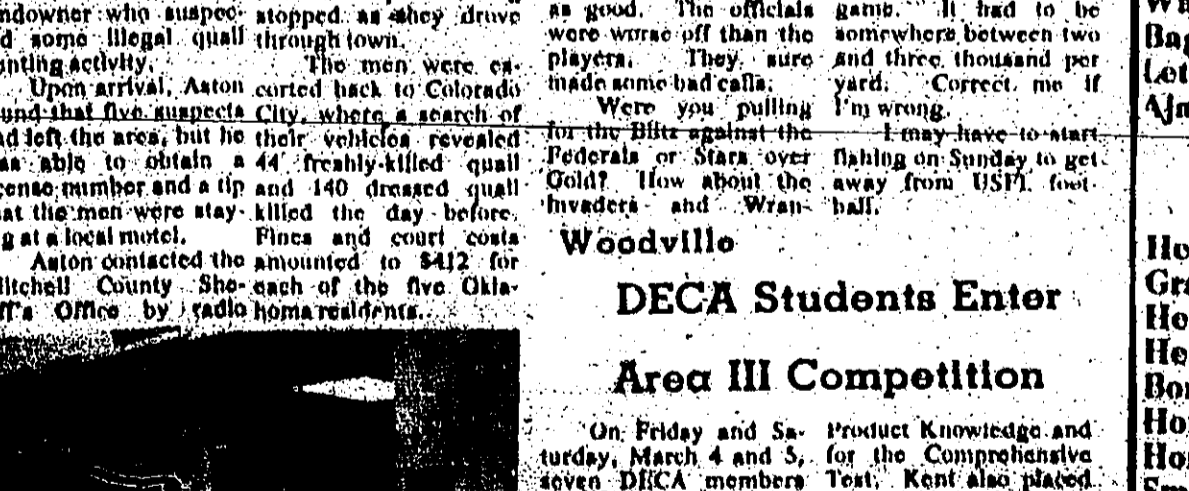
Woodville Bass Club Members



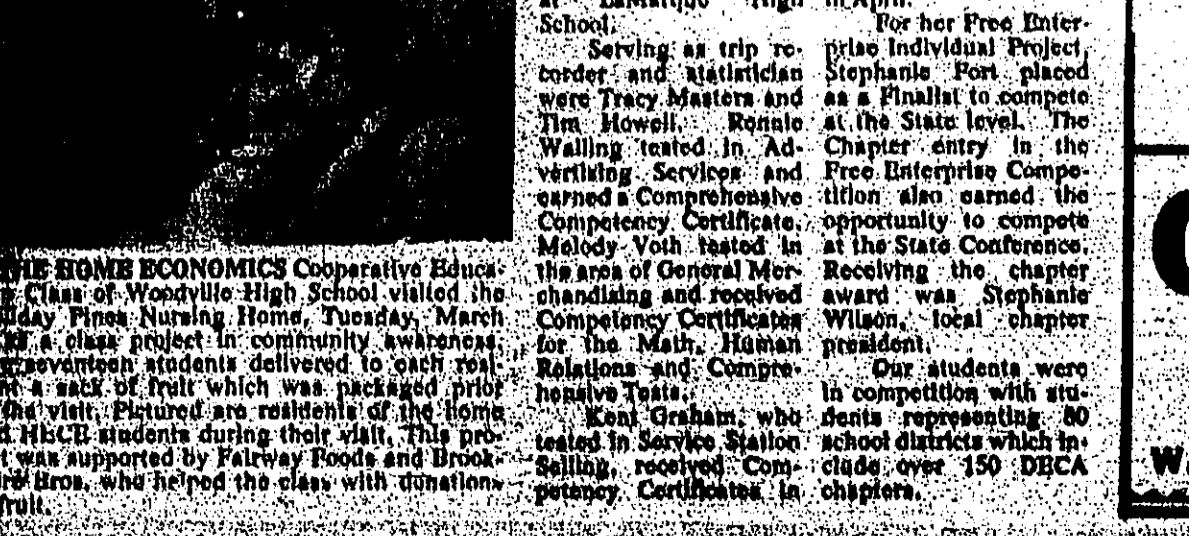
Woodville Bass Club Members



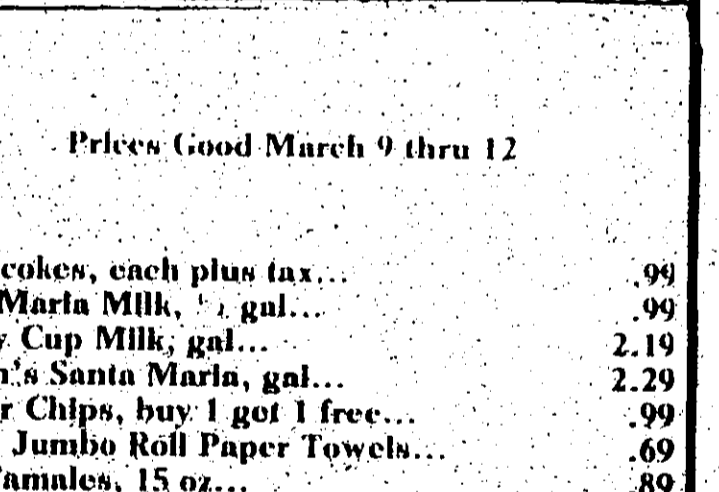
Woodville Bass Club Members



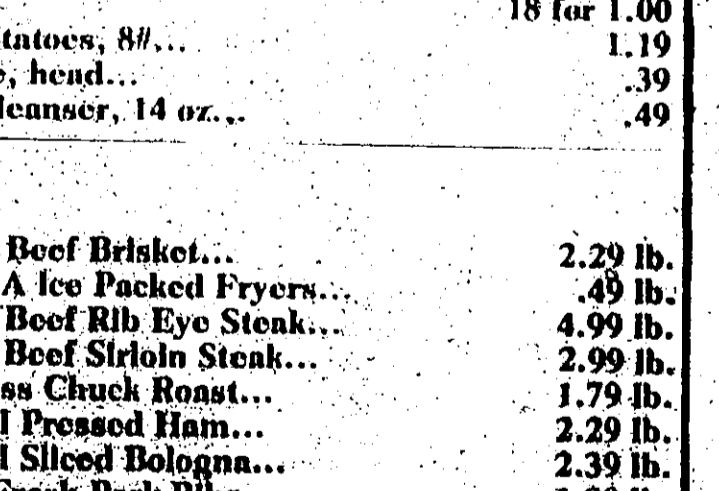
Woodville Bass Club Members



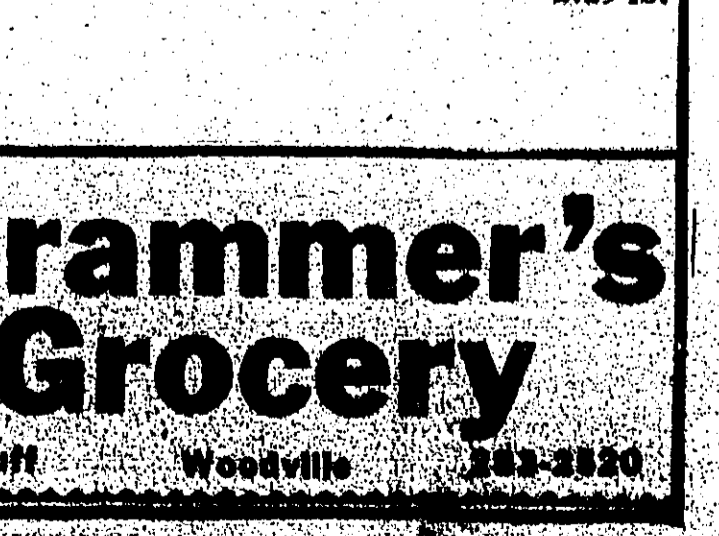
Woodville Bass Club Members



Woodville Bass Club Members



Woodville Bass Club Members



Woodville Bass Club Members

## FOOD BUYS

2 liter colas, each plus tax...	.99
Santa Maria Milk, 1 gal...	.99
Trophy Cup Milk, gal...	2.19
Borden's Santa Maria, gal...	2.29
Dentler Chips, buy 1 get 1 free...	.99
11oz Dry Jumbo Roll Paper Towels...	.69
Wolf Tampons, 15 oz...	.49
Kraft Macaroni & Cheese...	.89
Snack Bars: 3 Musketeers, Snickers, & Milky Way...	18 for 1.00
Bag potatoes, 8#...	1.19
Latigo, head...	.39
Ajax Cleanser, 14 oz...	.39
Heavy Beef Brisket...	2.29 lb.
Grade A Ice Packed Fryers...	.49 lb.
Heavy Beef Rib Eye Steak...	4.99 lb.
Heavy Beef Sirloin Steak...	2.99 lb.
Boneless Chuck Roast...	1.79 lb.
Hormel Pressed Ham...	2.29 lb.
Hormel Sliced Bologna...	2.39 lb.
Small Fresh Pork Slices...	1.99 lb.
Hormel Slab Sliced Bacon, 3 lbs. or more...	2.29 lb.

## Grammer's Grocery

W. Bluff Woodville 283-3820



TEEN AGENTS DONATION. Nancy (left), right) of the Tyler County Youth Development Center is shown accepting a donated street portable building from the Morgan Building Company of Columbus, represented by Ed and Frankie Morgan. The two said they were glad to help the program which assists delinquent and neglected children.

# Here By '86

From Page 1-A

Managing partners both during construction and after. The project is being managed by the firm of K&L Construction Co., Inc., 1001 W. W. Rd., Woodville.

It is planned to begin construction in the fall and will be completed in the spring of 1986. The school will have a capacity of 120 students.

The school will be a private school and will be operated by the Roman Catholic Diocese of Tyler. The school will be located on the corner of W. W. Rd. and S. 1st St.

The school will be a private school and will be operated by the Roman Catholic Diocese of Tyler. The school will be located on the corner of W. W. Rd. and S. 1st St.

The school will be a private school and will be operated by the Roman Catholic Diocese of Tyler. The school will be located on the corner of W. W. Rd. and S. 1st St.

The school will be a private school and will be operated by the Roman Catholic Diocese of Tyler. The school will be located on the corner of W. W. Rd. and S. 1st St.

The school will be a private school and will be operated by the Roman Catholic Diocese of Tyler. The school will be located on the corner of W. W. Rd. and S. 1st St.

The school will be a private school and will be operated by the Roman Catholic Diocese of Tyler. The school will be located on the corner of W. W. Rd. and S. 1st St.

The school will be a private school and will be operated by the Roman Catholic Diocese of Tyler. The school will be located on the corner of W. W. Rd. and S. 1st St.

The school will be a private school and will be operated by the Roman Catholic Diocese of Tyler. The school will be located on the corner of W. W. Rd. and S. 1st St.

The school will be a private school and will be operated by the Roman Catholic Diocese of Tyler. The school will be located on the corner of W. W. Rd. and S. 1st St.

The school will be a private school and will be operated by the Roman Catholic Diocese of Tyler. The school will be located on the corner of W. W. Rd. and S. 1st St.

**Saint Paul's Episcopal School**  
Registration March 9  
12:00 - 3:00 p.m.  
at the school on  
Thurs. 4:30 p.m. at Woodville  
• Small Classes • Individual Instruction  
• Suzuki Concept Music Study  
Age 3 Through 4th Grade  
283-7555  
Limited Scholarships Available

**Cloth World Sponsors 4-H Scholarships**  
The Texas 4-H Fashion Show is a statewide event for 4-H members who have been selected in the 4-H clothing project. Currently, more than 100,000 4-H members participate each year in the project.

A primary objective of each participating state is to gain the opportunity to compete in the Texas 4-H Fashion Show. The Texas 4-H Fashion Show is a statewide event for 4-H members who have been selected in the 4-H clothing project.

A primary objective of each participating state is to gain the opportunity to compete in the Texas 4-H Fashion Show. The Texas 4-H Fashion Show is a statewide event for 4-H members who have been selected in the 4-H clothing project.

A primary objective of each participating state is to gain the opportunity to compete in the Texas 4-H Fashion Show. The Texas 4-H Fashion Show is a statewide event for 4-H members who have been selected in the 4-H clothing project.

A primary objective of each participating state is to gain the opportunity to compete in the Texas 4-H Fashion Show. The Texas 4-H Fashion Show is a statewide event for 4-H members who have been selected in the 4-H clothing project.

A primary objective of each participating state is to gain the opportunity to compete in the Texas 4-H Fashion Show. The Texas 4-H Fashion Show is a statewide event for 4-H members who have been selected in the 4-H clothing project.

A primary objective of each participating state is to gain the opportunity to compete in the Texas 4-H Fashion Show. The Texas 4-H Fashion Show is a statewide event for 4-H members who have been selected in the 4-H clothing project.

A primary objective of each participating state is to gain the opportunity to compete in the Texas 4-H Fashion Show. The Texas 4-H Fashion Show is a statewide event for 4-H members who have been selected in the 4-H clothing project.

# Spray To Control Blight

Azalea petal blight is a fungal disease that attacks the blossoms of azaleas when they begin to open. According to Dr. George Philley, plant pathologist for the Texas Agricultural Experiment Station, the disease will turn the petals a brownish color or brown spots may appear on the petals. Essential by the blossoms will be destroyed.

For homeowners, however, it is essential that the blossoms be sprayed with a fungicide before they begin to open. The first application of the fungicide should be made when the blossoms first appear. Check labels for rates and spray intervals.

According to Philley, many great products are on the market for blight control. The most commonly used are Captan and Zineb. Captan is a fungicide that is effective against a wide variety of fungal diseases.

Zineb is another fungicide that is effective against a wide variety of fungal diseases. It is a contact fungicide, meaning it must be present on the plant surface at the time of infection to be effective.

When using any fungicide, it is important to follow the label directions carefully. Do not use more than the recommended amount, and do not use it more often than specified.

Philley says that the best way to control blight is to spray the blossoms regularly. He recommends spraying every 7 to 10 days during the blooming period.

For more information on controlling blight, contact the Texas Agricultural Experiment Station, P.O. Box 244802, Texas A.M. University, Texas A.M. System, Austin, Texas 78724.

# McClure Furniture presents A Special Microwave Cooking Seminar "Cooking At Its Best"

Thursday, March 10, 7:00 pm  
WOODVILLE HIGH SCHOOL HOME ECONOMICS DEPT

The Amana Radarange Plus Microwave Convection oven will be used. It's a Browning and baking combination oven—the heart of Amana Microwave and Combination Cooking.

FEATURING AMANA HOME ECONOMIST MARY BETH CYVAS

Mary Cyvas is a trained, experienced specialist in Microwave cooking and can answer your questions on the subject. She will show you how and why microwave cooking is growing in great popularity. She will also demonstrate the Amana Radarange with "Hotwave" cooking.

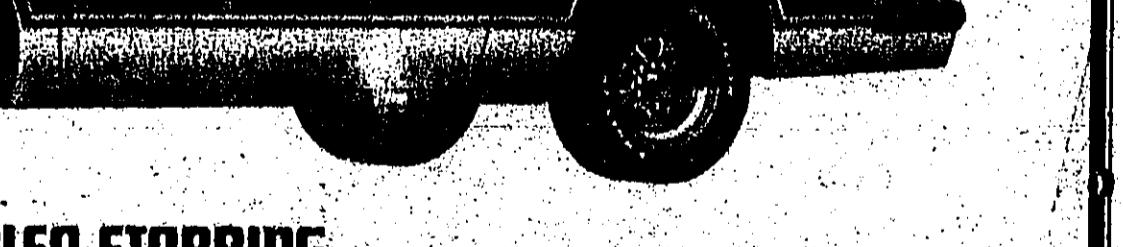


A ROTATING BLOWER OF POWER THAT COOKS MORE EVENLY AND COOKS MOST FOODS FASTER THAN EVER! SEE THE AMAZING AMANA'S IN ACTION! SEE AND TASTE FOODS COOKED TO PERFECTION THE AMANA WAY!

McCLURE FURNITURE  
305 N. Magnolia  
283-2519

IT'S HERE NOW FOR YOU TO SEE AND JOIN THE GREAT OLDS ROAD SHOW SALES RALLY!

STARRING THE 15th ANNIVERSARY LIMITED-EDITION HURST/OLDS CUTLASS.



INTRODUCING THUNDER AND LIGHTNING! IT'S PURE DRIVING PLEASURE! ALSO STARRING: CUTLASS CIERA ES. With new road-loving feel and electronic fuel-injected sprit. FIREENZA GT. The spark to rekindle your love of driving. CUTLASS CIERA HOLIDAY COUPE. A stylish new look of its own.

11.9 Annual percentage rate financing now on all new '83 Oldsmobiles.

Oldsmobile

# CLASSIFIED Deadline: Monday 5 pm Call 283-2569

CARD OF THANKS, GARAGE SALE, HOUSE TO BE MOVED, SERVICES, FOR RENT, HOUSE FOR SALE, DOUBLE 'C' ELECTRIC, SUBSCRIBE, DEALER WANTED.

WOODS FISH MARKET Farm Raised Catfish Live Or Dressed Hwy 1748 - Town Bluff Road Woodville Fresh Yard Eggs Joe & Betty Woods Owners

OUR COOL Patio Covers, Residential - Commercial, Alum-Tex Overhead Doors.

SEVENTEENTH TEXAS Savings And Loan Association Open A 'Super NOW' Account

NOW Earn interest on your savings and enjoy the convenience of checking... in one account.

# The Tyler County BOOSTER CLASSIFIED ADS GET RESULTS

Gray's Septic Tank Service, Double 'C' Electric, Dealer Wanted, Telephone Sales - Service Installation, TRI-STEEL STRUCTURES, INC., COMMERCIAL, FRED A. SEAMAN, BUILDER.

Knapp Ford Sales 104 Pine St. Hwy 69 & 287 Woodville 283-2526

TRUCKS, HOLDERMANN'S BUILDING CENTER, CAULKING, PLYWOOD INSULATION PADS, LUMBER, SHEETROCK.

HOLDERMANN'S BUILDING CENTER, CAULKING, PLYWOOD INSULATION PADS, LUMBER, SHEETROCK.



**BEEF**  
 99

**PORK LOINS**  
 139

**PORK CHOPS**  
 149

**PORK LOINS**  
 159

**ROAST**  
 249

**OYSTERS**

QUALITY SAVINGS!  
 OUR WAY IS YOUR WAY...  
**Fairway**  
 FOODS  
 PRICES GOOD MARCH 9-15, 1983  
 OPEN Mon. thru Sat. 8 a.m. til 8 p.m.  
 Sunday 10 a.m. til 6 p.m.



BONELESS BEEF RUMP ROAST	LB \$2.09	UNIVERSAL HAMBURGER PATTIES	LB \$1.39
OWENS SMOKED SAUSAGE	LB \$1.99	BEEF BOTTOM ROUND STEAK	LB \$1.99
RIB CUT PORK CHOPS	LB \$1.89	BEEF CUTLETS	LB \$2.69
CENTER CUT LOIN PORK CHOPS	LB \$2.29	BEEF BONELESS STEW MEAT	LB \$2.29
BREAKFAST CUT PORK CHOPS	LB \$2.59	BEEF BONELESS ENGLISH CUT ROAST	LB \$1.89
COUNTRY STYLE PORK SPARE RIBS	LB \$1.59	BEEF BONELESS ENGLISH CUT STEAKS	LB \$1.99



FRESH CUT CHICKEN PARTS  
 BREAST 99¢  
 THIGH 69¢  
 WING 89¢  
 LEGS \$1.09  
 BACK & NECKS 39¢  
 FRESH FRYER  
 SPLIT BROILERS 69¢

**WHEEL OF FORTUNE**  
 CASH & GROCERIES GIVE-A-WAY  
 Must be at least 18 years of age to participate  
**3 BIG WINNERS EACH WEEK**  
 No purchase is required.  
 Never Less Than \$500.00  
**WEEK NUMBER 10**

**\$1200.00**

PREVIOUS NAMES DRAWN  
 MARY LINDSEY, LULA RILEY, DOUGLAS BROOM, CATHY BEST, ROBERT BLACKMAN, MELWYN ELLIOTT, MARGARETTE ISTRY, JOHN GIBBERT, MARY E. DURHAM, GINNY REID, M.J. WILLIAMS, OWEN SANDSMA, LEROY JACKSON, BOB OPNER, MILDRED FOWLER, JERRY REID, EMMA HADNOT, JOYE HENNEGAN, HERMAN GAUTHER, LUCILLE ROBERTS, MARVIN GORDON, MELETRA BELL, SHERALD LEWIS

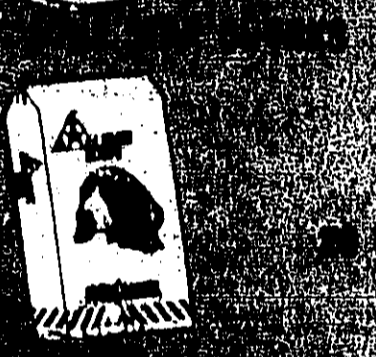
**CRACKER BARREL STIKS**  
 SHARP AND EXTRA SHARP  
 10 OZ \$1.99

**DAIRY FOODS**  
 BORDEN BUTTERMILK 1/2 GALLON \$1.19

**COTTAGE CHEESE**  
 12 OZ 79¢

MOUTHWASH	8 OZ	\$2.99
SHAMPOO	NORMAL OR DRY 8 OZ	\$1.99
CREST GEL	8 OZ	\$1.99
CAN MILK	18 OZ	2/89
NESTLES QUICK	16 OZ	\$1.79
NABISCO OREOS	19 OZ	\$1.89
DOUQUET RICE	6 LB	\$1.55
PORK-N-BEANS	14.5 OZ	3/100
POTATO STICKS	4 OZ	4/100
BUSH HOMINY	16 OZ	4/100
CHOPPED GREENS	16 OZ	4/100
BERRY CRUNCH CEREAL	11 OZ	\$1.59
SCOT TOWELS	18 ROLL	79¢
JEWEL SHORTENING	32 OZ	\$1.49

**FROZEN FOOD**  
 GRAPE JUICE 12 OZ 88¢  
 FRIED CHICKEN 22 OZ \$2.99  
 DONUTS 18 CT \$1.39  
 CORN 6 CT \$1.29  
 ORANGE JUICE 16 OZ \$1.49



**DRINKS**  
 79

**MAYONNAISE**  
 149

**DOG FOOD**  
 299

**CRACKERS**  
 69

**BBQ MARCH 10-11-12 AT FAIRWAY**

Old Time Hickory Smoked  
**Barbecue**  
 On Our Parking Lot  
**Thursday, Friday & Saturday**  
 10:00 AM To 7:30 PM

Barbecue Ribs - Whole Slab	\$8.95
Barbecue Ribs - 1/2 Slab	\$4.79
Barbecue Rib Plate	\$3.25
Barbecue Chicken - Whole	\$3.99
1/2 Barbecue Chicken	\$1.99
1/4 Chicken Plate	\$2.50
Barbecue Pork Loin 1 lb.	\$5.49
Barbecue Pork Loin Sandwich	\$1.99
Barbecue Beef 1 lb.	\$5.49
Barbecue Beef Sandwich	\$1.99
Barbecue Links 1 lb.	\$4.99
Barbecue Links Sandwich	\$1.99



**Subscribe**

**EAST TEXAS LAND CO.**  
210 S. Magnolia - Woodville - 713-283-5252  
East Texas Land Co. welcomes George and Nancy Jones to Tyler County.

2 plus Acres - Cultivated Area, Financing Only \$2,750 per acre  
3.50 Acres - Mostly cleared, some timber, back top road nice area. Only \$5,995  
4 plus Acres - Co. Road, city water, timber, Cultivated area.  
5 Acres in city, all utilities, large creek, creek access.  
5 Acres - mostly all **SOLD**  
7 plus Acres - Timber, Hwy frontage One acre cleared, 500' x 100' lot.  
8 Acres - Farming timber, Possible, owner financing Colmesneer.  
15 plus Acres - Area, Sprague, Wooded  
20 Acres - Timber, Dam, 1/2 hour, financing, 1/2 hour, financing, 1/2 hour, financing.  
25 Acres - 1/2 hour, financing, 1/2 hour, financing, 1/2 hour, financing.  
30 Acres - 1/2 hour, financing, 1/2 hour, financing, 1/2 hour, financing.  
35 Acres - 1/2 hour, financing, 1/2 hour, financing, 1/2 hour, financing.  
40 Acres - 1/2 hour, financing, 1/2 hour, financing, 1/2 hour, financing.  
45 Acres - 1/2 hour, financing, 1/2 hour, financing, 1/2 hour, financing.  
50 Acres - 1/2 hour, financing, 1/2 hour, financing, 1/2 hour, financing.  
55 Acres - 1/2 hour, financing, 1/2 hour, financing, 1/2 hour, financing.  
60 Acres - 1/2 hour, financing, 1/2 hour, financing, 1/2 hour, financing.  
65 Acres - 1/2 hour, financing, 1/2 hour, financing, 1/2 hour, financing.  
70 Acres - 1/2 hour, financing, 1/2 hour, financing, 1/2 hour, financing.  
75 Acres - 1/2 hour, financing, 1/2 hour, financing, 1/2 hour, financing.  
80 Acres - 1/2 hour, financing, 1/2 hour, financing, 1/2 hour, financing.  
85 Acres - 1/2 hour, financing, 1/2 hour, financing, 1/2 hour, financing.  
90 Acres - 1/2 hour, financing, 1/2 hour, financing, 1/2 hour, financing.  
95 Acres - 1/2 hour, financing, 1/2 hour, financing, 1/2 hour, financing.  
100 Acres - 1/2 hour, financing, 1/2 hour, financing, 1/2 hour, financing.  
105 Acres - 1/2 hour, financing, 1/2 hour, financing, 1/2 hour, financing.  
110 Acres - 1/2 hour, financing, 1/2 hour, financing, 1/2 hour, financing.  
115 Acres - 1/2 hour, financing, 1/2 hour, financing, 1/2 hour, financing.  
120 Acres - 1/2 hour, financing, 1/2 hour, financing, 1/2 hour, financing.  
125 Acres - 1/2 hour, financing, 1/2 hour, financing, 1/2 hour, financing.  
130 Acres - 1/2 hour, financing, 1/2 hour, financing, 1/2 hour, financing.  
135 Acres - 1/2 hour, financing, 1/2 hour, financing, 1/2 hour, financing.  
140 Acres - 1/2 hour, financing, 1/2 hour, financing, 1/2 hour, financing.  
145 Acres - 1/2 hour, financing, 1/2 hour, financing, 1/2 hour, financing.  
150 Acres - 1/2 hour, financing, 1/2 hour, financing, 1/2 hour, financing.  
155 Acres - 1/2 hour, financing, 1/2 hour, financing, 1/2 hour, financing.  
160 Acres - 1/2 hour, financing, 1/2 hour, financing, 1/2 hour, financing.  
165 Acres - 1/2 hour, financing, 1/2 hour, financing, 1/2 hour, financing.  
170 Acres - 1/2 hour, financing, 1/2 hour, financing, 1/2 hour, financing.  
175 Acres - 1/2 hour, financing, 1/2 hour, financing, 1/2 hour, financing.  
180 Acres - 1/2 hour, financing, 1/2 hour, financing, 1/2 hour, financing.  
185 Acres - 1/2 hour, financing, 1/2 hour, financing, 1/2 hour, financing.  
190 Acres - 1/2 hour, financing, 1/2 hour, financing, 1/2 hour, financing.  
195 Acres - 1/2 hour, financing, 1/2 hour, financing, 1/2 hour, financing.  
200 Acres - 1/2 hour, financing, 1/2 hour, financing, 1/2 hour, financing.  
205 Acres - 1/2 hour, financing, 1/2 hour, financing, 1/2 hour, financing.  
210 Acres - 1/2 hour, financing, 1/2 hour, financing, 1/2 hour, financing.  
215 Acres - 1/2 hour, financing, 1/2 hour, financing, 1/2 hour, financing.  
220 Acres - 1/2 hour, financing, 1/2 hour, financing, 1/2 hour, financing.  
225 Acres - 1/2 hour, financing, 1/2 hour, financing, 1/2 hour, financing.  
230 Acres - 1/2 hour, financing, 1/2 hour, financing, 1/2 hour, financing.  
235 Acres - 1/2 hour, financing, 1/2 hour, financing, 1/2 hour, financing.  
240 Acres - 1/2 hour, financing, 1/2 hour, financing, 1/2 hour, financing.  
245 Acres - 1/2 hour, financing, 1/2 hour, financing, 1/2 hour, financing.  
250 Acres - 1/2 hour, financing, 1/2 hour, financing, 1/2 hour, financing.  
255 Acres - 1/2 hour, financing, 1/2 hour, financing, 1/2 hour, financing.  
260 Acres - 1/2 hour, financing, 1/2 hour, financing, 1/2 hour, financing.  
265 Acres - 1/2 hour, financing, 1/2 hour, financing, 1/2 hour, financing.  
270 Acres - 1/2 hour, financing, 1/2 hour, financing, 1/2 hour, financing.  
275 Acres - 1/2 hour, financing, 1/2 hour, financing, 1/2 hour, financing.  
280 Acres - 1/2 hour, financing, 1/2 hour, financing, 1/2 hour, financing.  
285 Acres - 1/2 hour, financing, 1/2 hour, financing, 1/2 hour, financing.  
290 Acres - 1/2 hour, financing, 1/2 hour, financing, 1/2 hour, financing.  
295 Acres - 1/2 hour, financing, 1/2 hour, financing, 1/2 hour, financing.  
300 Acres - 1/2 hour, financing, 1/2 hour, financing, 1/2 hour, financing.  
305 Acres - 1/2 hour, financing, 1/2 hour, financing, 1/2 hour, financing.  
310 Acres - 1/2 hour, financing, 1/2 hour, financing, 1/2 hour, financing.  
315 Acres - 1/2 hour, financing, 1/2 hour, financing, 1/2 hour, financing.  
320 Acres - 1/2 hour, financing, 1/2 hour, financing, 1/2 hour, financing.  
325 Acres - 1/2 hour, financing, 1/2 hour, financing, 1/2 hour, financing.  
330 Acres - 1/2 hour, financing, 1/2 hour, financing, 1/2 hour, financing.  
335 Acres - 1/2 hour, financing, 1/2 hour, financing, 1/2 hour, financing.  
340 Acres - 1/2 hour, financing, 1/2 hour, financing, 1/2 hour, financing.  
345 Acres - 1/2 hour, financing, 1/2 hour, financing, 1/2 hour, financing.  
350 Acres - 1/2 hour, financing, 1/2 hour, financing, 1/2 hour, financing.  
355 Acres - 1/2 hour, financing, 1/2 hour, financing, 1/2 hour, financing.  
360 Acres - 1/2 hour, financing, 1/2 hour, financing, 1/2 hour, financing.  
365 Acres - 1/2 hour, financing, 1/2 hour, financing, 1/2 hour, financing.  
370 Acres - 1/2 hour, financing, 1/2 hour, financing, 1/2 hour, financing.  
375 Acres - 1/2 hour, financing, 1/2 hour, financing, 1/2 hour, financing.  
380 Acres - 1/2 hour, financing, 1/2 hour, financing, 1/2 hour, financing.  
385 Acres - 1/2 hour, financing, 1/2 hour, financing, 1/2 hour, financing.  
390 Acres - 1/2 hour, financing, 1/2 hour, financing, 1/2 hour, financing.  
395 Acres - 1/2 hour, financing, 1/2 hour, financing, 1/2 hour, financing.  
400 Acres - 1/2 hour, financing, 1/2 hour, financing, 1/2 hour, financing.  
405 Acres - 1/2 hour, financing, 1/2 hour, financing, 1/2 hour, financing.  
410 Acres - 1/2 hour, financing, 1/2 hour, financing, 1/2 hour, financing.  
415 Acres - 1/2 hour, financing, 1/2 hour, financing, 1/2 hour, financing.  
420 Acres - 1/2 hour, financing, 1/2 hour, financing, 1/2 hour, financing.  
425 Acres - 1/2 hour, financing, 1/2 hour, financing, 1/2 hour, financing.  
430 Acres - 1/2 hour, financing, 1/2 hour, financing, 1/2 hour, financing.  
435 Acres - 1/2 hour, financing, 1/2 hour, financing, 1/2 hour, financing.  
440 Acres - 1/2 hour, financing, 1/2 hour, financing, 1/2 hour, financing.  
445 Acres - 1/2 hour, financing, 1/2 hour, financing, 1/2 hour, financing.  
450 Acres - 1/2 hour, financing, 1/2 hour, financing, 1/2 hour, financing.  
455 Acres - 1/2 hour, financing, 1/2 hour, financing, 1/2 hour, financing.  
460 Acres - 1/2 hour, financing, 1/2 hour, financing, 1/2 hour, financing.  
465 Acres - 1/2 hour, financing, 1/2 hour, financing, 1/2 hour, financing.  
470 Acres - 1/2 hour, financing, 1/2 hour, financing, 1/2 hour, financing.  
475 Acres - 1/2 hour, financing, 1/2 hour, financing, 1/2 hour, financing.  
480 Acres - 1/2 hour, financing, 1/2 hour, financing, 1/2 hour, financing.  
485 Acres - 1/2 hour, financing, 1/2 hour, financing, 1/2 hour, financing.  
490 Acres - 1/2 hour, financing, 1/2 hour, financing, 1/2 hour, financing.  
495 Acres - 1/2 hour, financing, 1/2 hour, financing, 1/2 hour, financing.  
500 Acres - 1/2 hour, financing, 1/2 hour, financing, 1/2 hour, financing.  
505 Acres - 1/2 hour, financing, 1/2 hour, financing, 1/2 hour, financing.  
510 Acres - 1/2 hour, financing, 1/2 hour, financing, 1/2 hour, financing.  
515 Acres - 1/2 hour, financing, 1/2 hour, financing, 1/2 hour, financing.  
520 Acres - 1/2 hour, financing, 1/2 hour, financing, 1/2 hour, financing.  
525 Acres - 1/2 hour, financing, 1/2 hour, financing, 1/2 hour, financing.  
530 Acres - 1/2 hour, financing, 1/2 hour, financing, 1/2 hour, financing.  
535 Acres - 1/2 hour, financing, 1/2 hour, financing, 1/2 hour, financing.  
540 Acres - 1/2 hour, financing, 1/2 hour, financing, 1/2 hour, financing.  
545 Acres - 1/2 hour, financing, 1/2 hour, financing, 1/2 hour, financing.  
550 Acres - 1/2 hour, financing, 1/2 hour, financing, 1/2 hour, financing.  
555 Acres - 1/2 hour, financing, 1/2 hour, financing, 1/2 hour, financing.  
560 Acres - 1/2 hour, financing, 1/2 hour, financing, 1/2 hour, financing.  
565 Acres - 1/2 hour, financing, 1/2 hour, financing, 1/2 hour, financing.  
570 Acres - 1/2 hour, financing, 1/2 hour, financing, 1/2 hour, financing.  
575 Acres - 1/2 hour, financing, 1/2 hour, financing, 1/2 hour, financing.  
580 Acres - 1/2 hour, financing, 1/2 hour, financing, 1/2 hour, financing.  
585 Acres - 1/2 hour, financing, 1/2 hour, financing, 1/2 hour, financing.  
590 Acres - 1/2 hour, financing, 1/2 hour, financing, 1/2 hour, financing.  
595 Acres - 1/2 hour, financing, 1/2 hour, financing, 1/2 hour, financing.  
600 Acres - 1/2 hour, financing, 1/2 hour, financing, 1/2 hour, financing.  
605 Acres - 1/2 hour, financing, 1/2 hour, financing, 1/2 hour, financing.  
610 Acres - 1/2 hour, financing, 1/2 hour, financing, 1/2 hour, financing.  
615 Acres - 1/2 hour, financing, 1/2 hour, financing, 1/2 hour, financing.  
620 Acres - 1/2 hour, financing, 1/2 hour, financing, 1/2 hour, financing.  
625 Acres - 1/2 hour, financing, 1/2 hour, financing, 1/2 hour, financing.  
630 Acres - 1/2 hour, financing, 1/2 hour, financing, 1/2 hour, financing.  
635 Acres - 1/2 hour, financing, 1/2 hour, financing, 1/2 hour, financing.  
640 Acres - 1/2 hour, financing, 1/2 hour, financing, 1/2 hour, financing.  
645 Acres - 1/2 hour, financing, 1/2 hour, financing, 1/2 hour, financing.  
650 Acres - 1/2 hour, financing, 1/2 hour, financing, 1/2 hour, financing.  
655 Acres - 1/2 hour, financing, 1/2 hour, financing, 1/2 hour, financing.  
660 Acres - 1/2 hour, financing, 1/2 hour, financing, 1/2 hour, financing.  
665 Acres - 1/2 hour, financing, 1/2 hour, financing, 1/2 hour, financing.  
670 Acres - 1/2 hour, financing, 1/2 hour, financing, 1/2 hour, financing.  
675 Acres - 1/2 hour, financing, 1/2 hour, financing, 1/2 hour, financing.  
680 Acres - 1/2 hour, financing, 1/2 hour, financing, 1/2 hour, financing.  
685 Acres - 1/2 hour, financing, 1/2 hour, financing, 1/2 hour, financing.  
690 Acres - 1/2 hour, financing, 1/2 hour, financing, 1/2 hour, financing.  
695 Acres - 1/2 hour, financing, 1/2 hour, financing, 1/2 hour, financing.  
700 Acres - 1/2 hour, financing, 1/2 hour, financing, 1/2 hour, financing.  
705 Acres - 1/2 hour, financing, 1/2 hour, financing, 1/2 hour, financing.  
710 Acres - 1/2 hour, financing, 1/2 hour, financing, 1/2 hour, financing.  
715 Acres - 1/2 hour, financing, 1/2 hour, financing, 1/2 hour, financing.  
720 Acres - 1/2 hour, financing, 1/2 hour, financing, 1/2 hour, financing.  
725 Acres - 1/2 hour, financing, 1/2 hour, financing, 1/2 hour, financing.  
730 Acres - 1/2 hour, financing, 1/2 hour, financing, 1/2 hour, financing.  
735 Acres - 1/2 hour, financing, 1/2 hour, financing, 1/2 hour, financing.  
740 Acres - 1/2 hour, financing, 1/2 hour, financing, 1/2 hour, financing.  
745 Acres - 1/2 hour, financing, 1/2 hour, financing, 1/2 hour, financing.  
750 Acres - 1/2 hour, financing, 1/2 hour, financing, 1/2 hour, financing.  
755 Acres - 1/2 hour, financing, 1/2 hour, financing, 1/2 hour, financing.  
760 Acres - 1/2 hour, financing, 1/2 hour, financing, 1/2 hour, financing.  
765 Acres - 1/2 hour, financing, 1/2 hour, financing, 1/2 hour, financing.  
770 Acres - 1/2 hour, financing, 1/2 hour, financing, 1/2 hour, financing.  
775 Acres - 1/2 hour, financing, 1/2 hour, financing, 1/2 hour, financing.  
780 Acres - 1/2 hour, financing, 1/2 hour, financing, 1/2 hour, financing.  
785 Acres - 1/2 hour, financing, 1/2 hour, financing, 1/2 hour, financing.  
790 Acres - 1/2 hour, financing, 1/2 hour, financing, 1/2 hour, financing.  
795 Acres - 1/2 hour, financing, 1/2 hour, financing, 1/2 hour, financing.  
800 Acres - 1/2 hour, financing, 1/2 hour, financing, 1/2 hour, financing.  
805 Acres - 1/2 hour, financing, 1/2 hour, financing, 1/2 hour, financing.  
810 Acres - 1/2 hour, financing, 1/2 hour, financing, 1/2 hour, financing.  
815 Acres - 1/2 hour, financing, 1/2 hour, financing, 1/2 hour, financing.  
820 Acres - 1/2 hour, financing, 1/2 hour, financing, 1/2 hour, financing.  
825 Acres - 1/2 hour, financing, 1/2 hour, financing, 1/2 hour, financing.  
830 Acres - 1/2 hour, financing, 1/2 hour, financing, 1/2 hour, financing.  
835 Acres - 1/2 hour, financing, 1/2 hour, financing, 1/2 hour, financing.  
840 Acres - 1/2 hour, financing, 1/2 hour, financing, 1/2 hour, financing.  
845 Acres - 1/2 hour, financing, 1/2 hour, financing, 1/2 hour, financing.  
850 Acres - 1/2 hour, financing, 1/2 hour, financing, 1/2 hour, financing.  
855 Acres - 1/2 hour, financing, 1/2 hour, financing, 1/2 hour, financing.  
860 Acres - 1/2 hour, financing, 1/2 hour, financing, 1/2 hour, financing.  
865 Acres - 1/2 hour, financing, 1/2 hour, financing, 1/2 hour, financing.  
870 Acres - 1/2 hour, financing, 1/2 hour, financing, 1/2 hour, financing.  
875 Acres - 1/2 hour, financing, 1/2 hour, financing, 1/2 hour, financing.  
880 Acres - 1/2 hour, financing, 1/2 hour, financing, 1/2 hour, financing.  
885 Acres - 1/2 hour, financing, 1/2 hour, financing, 1/2 hour, financing.  
890 Acres - 1/2 hour, financing, 1/2 hour, financing, 1/2 hour, financing.  
895 Acres - 1/2 hour, financing, 1/2 hour, financing, 1/2 hour, financing.  
900 Acres - 1/2 hour, financing, 1/2 hour, financing, 1/2 hour, financing.  
905 Acres - 1/2 hour, financing, 1/2 hour, financing, 1/2 hour, financing.  
910 Acres - 1/2 hour, financing, 1/2 hour, financing, 1/2 hour, financing.  
915 Acres - 1/2 hour, financing, 1/2 hour, financing, 1/2 hour, financing.  
920 Acres - 1/2 hour, financing, 1/2 hour, financing, 1/2 hour, financing.  
925 Acres - 1/2 hour, financing, 1/2 hour, financing, 1/2 hour, financing.  
930 Acres - 1/2 hour, financing, 1/2 hour, financing, 1/2 hour, financing.  
935 Acres - 1/2 hour, financing, 1/2 hour, financing, 1/2 hour, financing.  
940 Acres - 1/2 hour, financing, 1/2 hour, financing, 1/2 hour, financing.  
945 Acres - 1/2 hour, financing, 1/2 hour, financing, 1/2 hour, financing.  
950 Acres - 1/2 hour, financing, 1/2 hour, financing, 1/2 hour, financing.  
955 Acres - 1/2 hour, financing, 1/2 hour, financing, 1/2 hour, financing.  
960 Acres - 1/2 hour, financing, 1/2 hour, financing, 1/2 hour, financing.  
965 Acres - 1/2 hour, financing, 1/2 hour, financing, 1/2 hour, financing.  
970 Acres - 1/2 hour, financing, 1/2 hour, financing, 1/2 hour, financing.  
975 Acres - 1/2 hour, financing, 1/2 hour, financing, 1/2 hour, financing.  
980 Acres - 1/2 hour, financing, 1/2 hour, financing, 1/2 hour, financing.  
985 Acres - 1/2 hour, financing, 1/2 hour, financing, 1/2 hour, financing.  
990 Acres - 1/2 hour, financing, 1/2 hour, financing, 1/2 hour, financing.  
995 Acres - 1/2 hour, financing, 1/2 hour, financing, 1/2 hour, financing.  
1000 Acres - 1/2 hour, financing, 1/2 hour, financing, 1/2 hour, financing.

**LOOK! LOOK! LOOK! MOBILE HOME BUYERS**

Most of these Mobile Homes are the new, some are older, but in very good shape. All homes are fully furnished, some have Central Air, Washer and Dryer. We have up to 37 to choose from. All you have to do is just 5% down. We will deliver, set up and hook-up at no charge. These units are located at Lunan Mobile Homes Sales, Inc. 410 N. Magnolia, Circle, Alexandria, La. (118) 473-4409, Hwy. 171 N. Bedford, La. (504) 462-2412 and Hwy. 131 South Leesville, La. (504) 296-8275. **HUNT! HUNT! HUNT! SALE!**

**CONSUMER COACH**

Choosing a Used Car...  
Does your building of...  
It doesn't take a lot of cash to make BIG BUCKS Use Classified. 283-2569

**THE NEW TAX LAWS WORK FOR YOU AT H & R BLOCK**

H & R Block's 27 years of experience in tax return preparation helps make the income tax laws work for you.  
This year over 100 new changes to the tax laws...  
See your telephone directory for the office nearest you or call 283-3472.

**Jackie Brown Real Estate**

US 69 - COMMISSION 837-2973  
NICE LOTS 2 1/2 large oaks \$3,000. 10 fenced \$3,000. 1/2 acre \$2,000. 1 acre \$2,000. 2 acres \$2,000.

**DOLLY STURROCK REAL ESTATE**

126 S. Magnolia, Woodville  
Ivanhoe lot 60 ft front on Lake Charmaine \$14,500  
2 1/2 A. fenced, creek thru, 7 room frame 2 1/2 A. Central H.A., carpeted. Large living & dining room, 2 metal storage, 1 bath, mobile with porch. City limits. Recover all will finance. 10% WOODVILLE. HR. 2H. double garage and utility. 1 1/2 acres fenced. 1 mi. W. 190. \$10,000 and up.

**JACK BUNN REAL ESTATE**

Dam-B 283-3832  
New 10 Unit Motel, 5 catfish ponds, nice home, all on 10 acres of land, U.S. Hwy. 190, Dam-B. 7 1/2 long Hwy. frontage. Only \$89,900, owner financed.  
"Home" fenced, has everything. \$15,000. Dam-B. Only \$19,995. Owner financed.  
11 1/2 Acres, 3 room house, deep well, stone bling, all fenced, just off IM 92. Turntable, has everything. \$25,000. \$9,995 - Owner financed.  
12 1/2 Acres, Home, nice lot, Head Acres, 2 blocks off Hwy. 92. Shade trees. Owner financed. \$12,000.  
13 1/2 Acres, 2 Bath home, Barlow Lake, Neches River, has everything, owner financed. \$18,000.  
14 1/2 Acres, 1 Bath nice mobile home, very nice, fenced lot, head acres, 1 block off Hwy. 92. \$11,500.

**Jackie Brown Real Estate**

IDEAL VACATION SPOT. 7 nice cabins on 100 ft. front, 1 Lake Amanda. Call for details.  
GOOD LOCATION in quiet neighborhood. Nice 2 BR, 1 1/2 Bath, Air Cond. Well. 1/2 acre. \$12,500. Call Jackie Brown at 283-3694 Woodville.  
NEAT AS A PIN and priced to sell! 1 1/2 BR, 1 1/2 Bath, sets, beautiful even dishwasher. Large lot, Colmesneer. MAKE AN OFFER! 2 BR, 1 1/2 Bath. EXCELLENT CONDITION. 4 BR, 1 1/2 Bath w/ large playroom. 1 1/2 ac. Will lease.  
LIVING IN THE COUNTRY! 1 BR, 1 1/2 on Hwy. Terms. NICE STARTER HOME! 2 BR, 1 1/2 on Hwy. Terms.  
SLEEPING IS HIGHLY IMPORTANT! Beautiful 1 1/2 w. lots of extras on 1 1/2 ac. HR 101. NOTHING TO DO BUT MOVE IN! 1 1/2 on Hwy. 1 BR, 1 1/2 Bath. 20 ac. 1 1/2 cyclone fence, 20 ac. A PLACE TO LIVE while you develop the land. 1 1/2 ac. on Hwy. 1 1/2 BR, 1 1/2 Bath, central water, pond, timber, fenced, minerals.  
12 Acres - US 69. SOLD  
12 Acres - Neches, good timber, creek, 40 Acres - US 69, large timber, creek, no title home, doing financing.  
14 Acres - N.E. Tyler County, long creek frontage, good investment property. 207 - N.E. Texas. 200 Acs. in coastal, new bath, 5 A. lake, some minerals. Terms \$2,500.

**DOLLY STURROCK REAL ESTATE**

2 1/2 A. fenced, creek thru, 7 room frame 2 1/2 A. Central H.A., carpeted. Large living & dining room, 2 metal storage, 1 bath, mobile with porch. City limits. Recover all will finance. 10% WOODVILLE. HR. 2H. double garage and utility. 1 1/2 acres fenced. 1 mi. W. 190. \$10,000 and up.  
CHARMAIN DR. 3 BR, 1 Bath, cedar, lake view. Lot with stone, stove & ref. Lacks those sweeties, closed doors. Own site being built. Equestrian. Place on Franklin Fireplace 70' x 120' lot. Must see.  
LAKE CHARMAINE 1 1/2 lots on 14 1/2 lake front, 15 1/2 bath home, all cedar, central H.A., ceiling fans, carpeted. 2 docks, too many extras to mention on Colmans. Must see.  
WINDYHOLE CR. 60' front on Hwy. 190. 1 1/2 BR, 1 1/2 Bath. 20 ac. 1 1/2 cyclone fence, 20 ac. A PLACE TO LIVE while you develop the land. 1 1/2 ac. on Hwy. 1 1/2 BR, 1 1/2 Bath, central water, pond, timber, fenced, minerals.  
12 Acres - US 69. SOLD  
12 Acres - Neches, good timber, creek, 40 Acres - US 69, large timber, creek, no title home, doing financing.  
14 Acres - N.E. Tyler County, long creek frontage, good investment property. 207 - N.E. Texas. 200 Acs. in coastal, new bath, 5 A. lake, some minerals. Terms \$2,500.

**KEN GEORGE REAL ESTATE Office**

10 S. Magnolia (Hwy. 69 South) Woodville - 283-3727  
NIGHT NUMBERS: Colman Oates 837-2647  
Colman Blackwell 283-5189  
DAM B. Nice remodeled frame w/ vinyl siding on large fenced lot on Hwy. 190. Central H.A. water, carpet. \$32,500.00  
UNDER CONSTRUCTION - good area - 2 BR, 2 1/2 bath, nice floor coverings and appliances. \$52,000.00  
NEAT - 2 1/2 BR, 2 1/2 bath, nice remodeling, chain link fenced yard. Recent remodeling. Nice neighborhood. \$24,500.00  
PICTURE PERFECT 2 BR, 1 1/2 bath, frame home on 2 1/2 landscaped, stone bling and just as nice on inside. \$32,500.00  
LAKE FRONT - Weekend or year round, fully furnished, 1 BR, 1 1/2 bath, on 2 1/2 acres of lake. \$89,000.00  
LAKE AMANDA - Waterfront cabin, 2 BR, 1 1/2 bath, boat dock w/ hot tub, furnished. \$34,750.00  
CHESSWOOD - Beautiful 1 BR, 2 1/2 B. bath, on well landscaped lot, storage bldg, central H.A. Hedged. \$29,500.00  
GOOD FAMILY HOME - in good neighborhood 4 BR, 2 1/2 B. fireplace, 2 car garage. \$89,500.00  
SPECIAL - 1 1/2 BR, 1 1/2 bath, w/ approx. 1400 sq. ft. living area, 3 BR, 2 1/2 Baths, choice neighborhood. Call for features.  
DON'T MISS THIS OPPORTUNITY - 8 Acres with stone lake, home close to city limits, city water and gas. \$30,000.00  
NIFTY & THIRTY - 1 1/2 wide mobile home, 1 BR, 1 1/2 B, 2 1/2 lots, lot room for the price, near town. \$29,000.00  
QUEER ELIZABETH - 1 BR, 1 1/2 B, fully furnished, owner will help with financing. \$36,000.00  
YOU'LL WANT TO STAY ON 12.90 Acres - Pond stocked w/ catfish, large 3/2 BR, 2 1/2 bath, extra nice, fireplace & much more. Call for features.  
RANCHETTE - Town Bluff Rd., 4 acres, 4 BR, 2 1/2 B, frame home, screened recreation room for the lake, garden, barn, country living at its finest. \$48,500.00  
A PLEASANT PLACE - and the right distance from town, 2 BR, 2 1/2 B, built-ins, 2 car garage, all on 1/2 shady acre. \$49,500.00  
FRESH AREA - What you have been asking for, 5.66 Acres land with older home. \$19,500.00  
WONDERFUL LOCATION - Seneca Rd., with assumable 1st mort. 3 BR, 2 1/2 B, fireplace, nice kitchen, built up acre, nice view. \$19,500.00  
QUALITY CONSTRUCTION - 3 BR, 2 1/2 B, 1 1/2 bath, living room, almost 2,000 sq. ft., beautiful living room, beautiful trees, fenced, great location. \$83,500.00

**A GOLD MINE OF BARGAINS**

Classified Ads In The Tyler County Booster  
Booster 493-8588  
1. 1 1/2 BR, 1 1/2 Bath, sets, beautiful even dishwasher. Large lot, Colmesneer. MAKE AN OFFER! 2 BR, 1 1/2 Bath. EXCELLENT CONDITION. 4 BR, 1 1/2 Bath w/ large playroom. 1 1/2 ac. Will lease.  
2. 1 1/2 BR, 1 1/2 Bath, sets, beautiful even dishwasher. Large lot, Colmesneer. MAKE AN OFFER! 2 BR, 1 1/2 Bath. EXCELLENT CONDITION. 4 BR, 1 1/2 Bath w/ large playroom. 1 1/2 ac. Will lease.  
3. 1 1/2 BR, 1 1/2 Bath, sets, beautiful even dishwasher. Large lot, Colmesneer. MAKE AN OFFER! 2 BR, 1 1/2 Bath. EXCELLENT CONDITION. 4 BR, 1 1/2 Bath w/ large playroom. 1 1/2 ac. Will lease.

**Reservation Opens Season March 12**

Dignitaries from throughout the state including members of the 60th Legislature have been invited to the Alabama-Coushatta Indian Reservation in East Texas Saturday, March 12 for grand opening ceremonies, launching the spring season at the Tribal Gateway Tourist Complex.  
The occasion will mark the beginning of the 20th year the tourist complex has been in operation.  
Area press representatives will be shown first of special guests for the Saturday festivities, which will be shown first of American Indian Palm Festival.  
"Windwalker" and "A Man Called Horse" will be shown first of charge both Saturday and Sunday at the Inn of the 12 Clans, the Reservation restaurant. On Saturday, the first movie will start at 12 noon, followed immediately by the second both will be repeated beginning at 6 pm.  
The Sunday matinee-only presentation is scheduled to begin at 1 p.m.  
Hosted deep in scenic Big Thicket Country, the Reservation is on Highway 190 between the State's towns of Livingston and Woodville and about 90 miles north of Houston, 770 Alabama and Coushatta, separate but related tribes, have lived in the area since the early 1800's.  
The Indians' tourist complex is recognized as one of the fastest growing enterprises of its kind in Texas. Each year it attracts more than 200,000 visitors who enjoy the opportunity to step briefly out of the workaday world and into the rich history and culture of Texas' outlier inhabitants.  
In operation from 10 a.m. to 8 p.m. during the spring, the tourist section of the Reservation offers a variety of popular activities, including a brief walking tour through the year-round lake surrounded by tall pines, the camping facilities, complete with 177 sites, with 77 covered recreational vehicles. Primitive sites are available for backpackers, and rooming with hot showers are conveniently located. Campers, as well as tribal members, have access to groceries, camping supplies, laundry and a modern laundry complete with 12 washers and dryers. A total of 187 sites, with 77 covered recreational vehicles, primitive sites are available for backpackers, and rooming with hot showers are conveniently located. Campers, as well as tribal members, have access to groceries, camping supplies, laundry and a modern laundry complete with 12 washers and dryers. A total of 187 sites, with 77 covered recreational vehicles, primitive sites are available for backpackers, and rooming with hot showers are conveniently located. Campers, as well as tribal members, have access to groceries, camping supplies, laundry and a modern laundry complete with 12 washers and dryers. A total of 187 sites, with 77 covered recreational vehicles, primitive sites are available for backpackers, and rooming with hot showers are conveniently located. Campers, as well as tribal members, have access to groceries, camping supplies, laundry and a modern laundry complete with 12 washers and dryers. A total of 187 sites, with 77 covered recreational vehicles, primitive sites are available for backpackers, and rooming with hot showers are conveniently located. Campers, as well as tribal members, have access to groceries, camping supplies, laundry and a modern laundry complete with 12 washers and dryers. A total of 187 sites, with 77 covered recreational vehicles, primitive sites are available for backpackers, and rooming with hot showers are conveniently located. Campers, as well as tribal members, have access to groceries, camping supplies, laundry and a modern laundry complete with 12 washers and dryers. A total of 187 sites, with 77 covered recreational vehicles, primitive sites are available for backpackers, and rooming with hot showers are conveniently located. Campers, as well as tribal members, have access to groceries, camping supplies, laundry and a modern laundry complete with 12 washers and dryers. A total of 187 sites, with 77 covered recreational vehicles, primitive sites are available for backpackers, and rooming with hot showers are conveniently located. Campers, as well as tribal members, have access to groceries, camping supplies, laundry and a modern laundry complete with 12 washers and dryers. A total of 187 sites, with 77 covered recreational vehicles, primitive sites are available for backpackers, and rooming with hot showers are conveniently located. Campers, as well as tribal members, have access to groceries, camping supplies, laundry and a modern laundry complete with 12 washers and dryers. A total of 187 sites, with 77 covered recreational vehicles, primitive sites are available for backpackers, and rooming with hot showers are conveniently located. Campers, as well as tribal members, have access to groceries, camping supplies, laundry and a modern laundry complete with 12 washers and dryers. A total of 187 sites, with 77 covered recreational vehicles, primitive sites are available for backpackers, and rooming with hot showers are conveniently located. Campers, as well as tribal members, have access to groceries, camping supplies, laundry and a modern laundry complete with 12 washers and dryers. A total of 187 sites, with 77 covered recreational vehicles, primitive sites are available for backpackers, and rooming with hot showers are conveniently located. Campers, as well as tribal members, have access to groceries, camping supplies, laundry and a modern laundry complete with 12 washers and dryers. A total of 187 sites, with 77 covered recreational vehicles, primitive sites are available for backpackers, and rooming with hot showers are conveniently located. Campers, as well as tribal members, have access to groceries, camping supplies, laundry and a modern laundry complete with 12 washers and dryers. A total of 187 sites, with 77 covered recreational vehicles, primitive sites are available for backpackers, and rooming with hot showers are conveniently located. Campers, as well as tribal members, have access to groceries, camping supplies, laundry and a modern laundry complete with 12 washers and dryers. A total of 187 sites, with 77 covered recreational vehicles, primitive sites are available for backpackers, and rooming with hot showers are conveniently located. Campers, as well as tribal members, have access to groceries, camping supplies, laundry and a modern laundry complete with 12 washers and dryers. A total of 187 sites, with 77 covered recreational vehicles, primitive sites are available for backpackers, and rooming with hot showers are conveniently located. Campers, as well as tribal members, have access to groceries, camping supplies, laundry and a modern laundry complete with 12 washers and dryers. A total of 187 sites, with 77 covered recreational vehicles, primitive sites are available for backpackers, and rooming with hot showers are conveniently located. Campers, as well as tribal members, have access to groceries, camping supplies, laundry and a modern laundry complete with 12 washers and dryers. A total of 187 sites, with 77 covered recreational vehicles, primitive sites are available for backpackers, and rooming with hot showers are conveniently located. Campers, as well as tribal members, have access to groceries, camping supplies, laundry and a modern laundry complete with 12 washers and dryers. A total of 187 sites, with 77 covered recreational vehicles, primitive sites are available for backpackers, and rooming with hot showers are conveniently located. Campers, as well as tribal members, have access to groceries, camping supplies, laundry and a modern laundry complete with 12 washers and dryers. A total of 187 sites, with 77 covered recreational vehicles, primitive sites are available for backpackers, and rooming with hot showers are conveniently located. Campers, as well as tribal members, have access to groceries, camping supplies, laundry and a modern laundry complete with 12 washers and dryers. A total of 187 sites, with 77 covered recreational vehicles, primitive sites are available for backpackers, and rooming with hot showers are conveniently located. Campers, as well as tribal members, have access to groceries, camping supplies, laundry and a modern laundry complete with 12 washers and dryers. A total of 187 sites, with 77 covered recreational vehicles, primitive sites are available for backpackers, and rooming with hot showers are conveniently located. Campers, as well as tribal members, have access to groceries, camping supplies, laundry and a modern laundry complete with 12 washers and dryers. A total of 187 sites, with 77 covered recreational vehicles, primitive sites are available for backpackers, and rooming with hot showers are conveniently located. Campers, as well as tribal members, have access to groceries, camping supplies, laundry and a modern laundry complete with 12 washers and dryers. A total of 187 sites, with 77 covered recreational vehicles, primitive sites are available for backpackers, and rooming with hot showers are conveniently located. Campers, as well as tribal members, have access to groceries, camping supplies, laundry and a modern laundry complete with 12 washers and dryers. A total of 187 sites, with 77 covered recreational vehicles, primitive sites are available for backpackers, and rooming with hot showers are conveniently located. Campers, as well as tribal members



# BUSINESS & SERVICE DIRECTORY

To Get The Job Done Right, Hire A Professional!

283-2560

**DOZER WORK**  
 No Job To Big Or To Small  
 - Ponds - Land Clearing  
 - Road (Dug) Works 283-2373

**For Proven Results Place Your Ad Here.**  
 Call 283-2569

**DOZER WORK**  
 Ponds Dug, Road and Ditch Work, Fence Rows Cleared, Bush Hogging, Under Brushing, No Moving Charge, Competitive Prices, 18 Years Experience, Warren, 547-2259

**DRY UPHOLSTERY**  
 THE BEST TAYLOR IN TOWN  
 1305 W. Bluff Road, Woodville, TX 75797  
 Taylor Owners

**SHEETROCK WORK**  
 New or Remodeling  
 Some Repair Job - Some Remodeling  
 CALL 281-2148 After 5 p.m.

Start a new year with a new roof. Show your home with an old leaky roof.  
**Jr. Collins Roofing**  
 CALL: 967-4448  
 Livingston, Tx. Over 20 years experience

Quality Carpet Cleaning Service  
 For estimates phone 283-2624  
**STEAMMASTER**  
 CARPET SOIL EXTRACTION

WE SPECIALIZE IN BAKES FOR SPECIAL OCCASIONS  
**SANDERS BAKE SHOP**  
 Weddings, Parties, Birthdays, etc.  
 520.50 MAGNOLIA

**Vinyl Siding**  
 Carports-Awnings-Gutters  
 40 year warranty vinyl siding will not warp, fade, bend or conduct electricity. Insulation installed with siding cut your heating bill in half. Free estimate. Financing available.  
**Sanderson Vinyl & Aluminum Products**  
 283-5430

**BUR-MONT NURSING CENTER**  
 Has Opening For Full Or Part Time LVN'S Excellent Salary  
 Paid Insurance  
 Star Benefits  
 Good Working Conditions  
 See Or Contact: Mrs. Wood D.O.N.  
 154 Banks Dr. Livingston 327-5415  
 Call For Directions Only

For The Best In Furniture and Appliances SEE...  
**Furniture**  
 Zenith, Maytag, La-Z-Boy Chairs, Bell City, Sunnions, Sealy, Amara, Baislett, Armstrong carpeting  
 303 N. Magnolia 283-2549

**SMALL SPACE BIG RESULTS**  
 with classified ads in... The Booster  
 283-2569

**Ramsey's Mini Warehouse SELF STORAGE**  
 283-3481  
 283-5089

**Back Hoe & Dozer Work**  
 Ponds, roads, clearing & under brushing  
 Free Estimates  
**Charles Rawls 283-3484**

24-Hour Wrecker Service  
**Furner's Radiator & Custom Exhaust**

**EAST-TEX Energy Savings Products**  
 Kero-Sun Heaters Woodburning Heaters Solar Heat Units  
**Western Auto Sales Center**  
 283-7555 502 N. Magnolia

**Harper Butane Inc.**  
 6 Miles South of Woodville Hwy. 69  
 Next to Ivanhoe Entrance  
**Special!!! New 25 Gallon Bottles & Gas Only \$84.95.**  
 Camper Bottles Filled, No waiting  
 20 Minute Maximum  
 Sell or Lease 250 Gallon Tanks  
 All size bottles and accessories in stock.  
 283-7675 Evans Cappel, Mgr.  
 Open Mon-Fri 8 am - 5 pm Saturday 8 am - 12 noon

**BEST DEAL IN TYLER COUNTY**  
  
**DAVIS FOOD MARKET**  
 Warren, Tx 547-3339

For Proven Results Advertise In The **Business & Service Directory**  
 Call 283-2569

## Birth List Released

I, Patricia Brown, District Clerk in and for the County of Tyler, State of Texas, hereby release for publication the following Birth List to appear Monday, March 14, 1983, at 9 a.m. in the District Courtroom in Woodville, Texas, with the Honorable, Monte D. Lawlis, Judge of the 1-A Judicial District Presiding.

Erma Bean, Colmanville; Larry Gene Wolf, Woodville; Jewel Joe Beck, Woodville; Thomas Eratton Barnes, Chester; Robert L. Williams, Woodville; Blanche Wilson Reese, Warren; Lalo Wayne Satterwhite, Woodville; Claude Lennie Brown, Woodville; Blanche Irinegar, Spurger; Jack Thomas Brown, Woodville; Robert A. Brandin, Warren; Mrs. J. J. Bloodworth, Warren; Audrey A. Taylor, Woodville; E. L. Boykin, Woodville; Linnie Bladen, Warren; James H. Best, Woodville; Hney Lee Williams, Doucette; Maggie Walters, Spurger; Richard Scott Johnson, Warren; Thomas Robert McDaniel, Woodville; Jo Ann Callaway, Fred; Darrell Venton Waldrop, Colmanville; G. W. Lowmire, Woodville; Joe Sandoval Jr., Warren; Ruby Blanton Kelsey, Colmanville; Rita Dean Jackson, Warren; Johnny B. Horton, Sr., Woodville; Bonnie Anderson Walbeck, Woodville; Doyle Ricky Howell, Colmanville; Lenson White, Woodville; Doyle Rox Currie, Hillister; Ruth Edith Stecher, Hillister; Cosula Harris, Doucette; Lynn Hayes Pryor, Woodville; Robert Allen Hayes, Warren; Mable Marie Hudgins, Colmanville; Madelon D. Graham, Woodville; Joseph Green, Jr., Woodville; Joe Oliver Goode, Colmanville; J. C. Powell, Chester; Mrs. Jim H. Post, Woodville; Joe Mack Olancock, Chester; Tommy L. Placco, Woodville; Monte L. Moore, Fred; Billie Richey Mullins, Warren; Evelyn P. Pate, Woodville; Mrs. Jean Parham, Doucette; Bonita Smith Carida, Woodville; Hazel J. Dickey, Fred; Henrietta H. Shepherd, Woodville; William H. Gasto, Spurger; Peggy Whitaker Stealy, Woodville; Melinda Sue Kinbrough, Slaboo; Wallace Jay Johnson, Warren; Dorris Ann Prince, Spurger; Thomas E. Bell, Jr., Woodville; Marie Morris Kepnan, Spurger; Pearl Mitchell, Woodville; Susan Betty Walker, Woodville; Ruby Rochelle Eastham, Woodville; Pauline Lindsay, Spurger; Carolyn Sue Williams, Woodville; Kenneth Ray Powell, Colmanville; Leon Smith, Woodville; Gail H. Stevenson, Woodville; Clint Owens, Woodville; Wayne A. Ogden, Woodville; Barbara J. Ogden, Colmanville; Mrs. Effie Myrthel Odon, Woodville; Marilyn Ramsey Clemmons, Woodville; Jimmy Chance, Jr., Fred; Lela Reid Graham, Woodville; James Claiborn Read, Woodville; Trucilla June Crowell, Hillister; Richard Sterling, Woodville; Hatlie Stogner Young, Woodville; Donald A. Anderson, Woodville; Sarah Lee Castlaw, Warren; Nina Crawford Dible, Warren; Leroy Dugan, Woodville; Linda Sheffield way, Redman; Spurger; John Carrell, Warren; Boon A. Smart, Fred; Clyde Davis Hlicka, Woodville; Judith Stillwell Gil-Taylor, Woodville; Mrs. Irene McGallon, Fred; Ida Mae Shepherd, Warren; Dorothy Lewis Segrest, Woodville; Joe Hughes, Colmanville; Barbara J. Smith, Fred; Benjamin P. Simpson, Jr., Warren; Ray Young, Woodville; Alene Fair Yawn, Warren; Harlette Richmond Wright, Woodville; Vickie Nugent, Hillister; Virgil Ray Shown, Woodville; Alvin Preston Swinney, Warren; Cindy Davis Sims, Warren; Robert Lee Thompson, Doucette; Lucy Webster

**Facts & Figures**  
 Although heart disease remains one of the most common killers, statistics show a significant decline. Americans have spent more than \$5.4 billion in the last 20 years in cardiac research. The results have been some remarkable breakthroughs.



Such terms as "open heart" surgery, "triple bypass" and "stress tests" - instead of three decades ago - are accepted parts of even layman's vocabularies these days. They're typical of the progress in cardiac diagnosis, treatment and care evident today.

Fresh peas should squeak when the pods are rubbed together. Store them unshelled in your refrigerator.

**Firewood For Sale**  
 Pickup Or Deliver  
 429-3184

**HOW TO BANK AFTER BANKING HOURS.**

Use IMPACT (the automatic teller machine) that lets you bank anytime you want without waiting in line, 24 hours a day. Seven days a week. Even on holidays.

Just step up to our IMPACT machine and insert your IMPACT card. Then follow the simple instructions to take money out, put money in, transfer funds or check your balance. It's that easy. And that fast.

You can use IMPACT machines to get cash in banks, supermarkets, airports, shopping malls, college campuses and hospitals all over Texas.

So your money is always close at hand. Whenever you need it. Whenever you need it.

If you want to get out of line at your bank, maybe you should come to our bank. We have IMPACT.

**IMPACT**  
 The shortest distance between you and your money.

**FDIC**

**CITIZENS STATE BANK**  
 P.O. BOX 109 WOODVILLE, TEXAS 75797