

THE TYLER COUNTY BOOSTER

SERVING TYLER COUNTY SINCE 1930

"Tell 'Em You Saw It
In The
Tyler County Booster!"

News Highlights:

- First National Opens Nov. 7
- "Citizen Of Year" Sought
- Woodville Eagles On Roll

4 Sections, 26 Pages
Vol. 53, No. 43 - 20 cents

Thurs., Nov. 3, 1983
Woodville, Texas 75979

Corps Says With 'It's'

Reservoir Eyed In 1990's

by John K. Thompson

If funding from Congress for the Lake Rockland project is included in the Corps of Engineers' budget for fiscal 1985 and annually thereafter, the 3 mile wide, 22 mile long Rockland Reservoir could begin full following dam construction as early as the year 2000, continuing two years for "delays and lawsuits."

Colonel Ted Stroup, Port Worth District Engineer, U.S. Army Corps of Engineers, told area citizens and officials in Woodville last Thursday that, "Looking west (upstream) from the Highway 69 Neches River Bridge you would see in the distance a five mile long 106-110 foot tall earthen embankment very much like at Sam Rayburn with construction of Rockland dam which could begin as early as 1992 or 1994," he said.

"But," he cautioned, "that is with a lot of 'ifs'."

District Engineer Stroup was accompanied by staff members Denver Mills, Chief of the Planning Section, Sally West, Public Affairs Officer, LeJand Wilson, Neches River Basin project Engineer, and Jim Chandler, Corps of Engineers Environmental Planner as he spoke to four Woodville meetings on the status of the Rockland Dam and Reservoir Project. Stroup with Chamber of Commerce officials at 9 a.m. at the Citizens State Bank Community Room, area governmental, school and timber industry officials at 10 a.m. spoke at a luncheon meeting of the Woodville Lions at the Lions Den and spoke to the general public at 2 p.m. at the Ballroom of the Woodville Inn. Stroup summed up his Woodville visit, saying "we were able to begin our 'public involvement' process early on Lake Rockland through these meetings because of the local interest shown."

Among the officials attending Thursday meetings were several

parties expressing serious interest in utilization of Rockland project's considerable benefits to the area. Dibold Mayor C. I. Shepherd said "we definitely support the Lake Rockland Project, as it would certainly help to solve our water supply problems." Dibold Public Works Director M. D. Scarborough indicated the City of Dibold was definitely interested in acquiring rights to purchase water from the Rockland Reservoir. "It would be a valuable

asset for our city," he said. Scarborough stated that the water wells recently drilled for the City of Dibold "are not going to meet our long term needs."

Sam Houston Electric Cooperative, Official Rockland Project

Colonel Stroup "Sam Houston Electric Cooperative would like to be able to purchase the hydro power from the Lake Rockland Project."

(cont. on Page 3-A)



MAKING A POINT...Colonel Ted Stroup, (left), District Engineer for the Port Worth District Office of the U.S. Army Corps of Engineers, spoke to several groups in Woodville last Thursday about the Corps of Engineers re-activated Rockland Lake and Dam Project. Col. Stroup speaking at a meeting Thursday morning for area public officials seems to be talking directly to City of Houston Water Division Official, L. H. Seward, (second from left in front row), while seated to his left, Dibold Free Press Editor, Mike Crim takes notes.

Craig Is FNB Cashier

Roy Craig was hired on September 1, 1983 as Vice-President and Cashier of the First National Bank of Woodville. Roy came here from the historic Atascadero Community of Castrolville where he had been in business. He is single and resides in Ivanhoe. His personal interests include restora-

tion of antique furniture. His prior banking experience includes four years at Lytle State Bank in Lytle, Texas where he served as Vice-President and Loan Officer and as a director of this bank. Roy was also Personnel Director at Republic National Bank in San Antonio for four years with additional

duties in the Operations Department. Prior to this, he had served as a Systems Analyst at Bexar County National Bank, San Antonio and also worked in the "Loan" and Operations Department at Valley National Bank in San Antonio.

Prior to his banking career, he had served in the U.S. Naval Reserve for 20 years, 12 years of which he had worked in the legal field of the Navy Department and his last 8 years as an administrative aide to the NAU Headquarters in the Mediterranean and the U.S. Naval Post-graduate School in Monterey, California.



"A FRIEND IN NEED...is a friend in deed" said friends surrounding local Court House "first citizen" Brad Smith (seated) on Wednesday as he was presented a cute little poodle as a show of friendship. Courthouse authorities quickly participated in naming the pooch "Lil Woodstock" now abbreviated to "Woody" by it's owner, who indicated that he was "speechless at the thought of the gift, which he reported "was already paper trained and follows him around everywhere"



NEED WATER...City of Dibold Officials, M.D. Scarborough (left) and Earl Cain (center) discuss possible shortlines in Dibold area of Lake Rockland with Corps of Engineers District Engineer Colonel Ted Stroup (right) who was in Woodville last Thursday to discuss the Rockland Project with area citizens. City of Dibold officials have expressed a strong interest in acquiring rights to Lake Rockland water to replace local well water which has been rapidly depleted in the Dibold/Tulka area in recent years.

Warren Sets Tax Rate

by Annabeth Willis
The Warren Independent School District Board of Trustees voted Oct. 25 to set a tax rate of \$1.41 for the District. The 1983-84 rate represents an increase of \$.16 over the 1982-83 rate. Loss in the value of oil and gas reserves was cited as the biggest reason for the increase. This loss in value amounted to \$12,212,188. Board member Marvin Fannin requested that we obtain an explanation for the large drop in valuation of this land. The Board considered bids on a mainte-

nance contract for school at conditions from Air Tech Service of Lumberton and AAA Service Company of Beaumont. Mr. Floyd Landon of Air Tech Service was present at the meeting to answer any questions the Board might have regarding service of the units. The Board awarded the contract to Air Tech Service. Board Member Kenneth Gregory reported on the last meeting of the Central Appraisal District. He stated that his motion to try to equalize representation on the Board according to the financial burden carried by each entity failed

by a vote of 4 to 2 with one abstention. Warren ISD and Tyler County voted for the motion, Woodville ISD abstained and the other four members voted against the motion. School Attorney Fanner Hunt said he would check into the

feasibility of Warren ISD changing from Tyler County to Hardin County next year. Following Executive Session, the Substitute Teachers List was approved. The next Board Meeting will be Nov. 22.

**Only 52 Days
Til Christmas**

By Tracy Mason, Reporter



Sidewalk Soundoff

THIS WEEK'S QUESTION:
Do you believe in ghosts and goblins and witches? Why?



"Yes, because I have seen ghosts from my ancestors past and there are some people who believe there are witches."
The Gorrilla, Woodville



"Sure I do. I'm here aren't I. There's always something that can't be explained. Haven't you ever heard of things that go bump in the night?"
Extraterrestrial, Woodville



"Yes, I'm from the mountains and we are very superstitious."
Mouth in Gal, Salazar, P.O.



"Yes, I believe in ghosts because I'm Genie and I live in a bottle."
Genie, Woodville



"Yes, No, Maybe so. Don't like going to cemeteries at mid-night and hearing all those weird sounds."
Belle Star, Woodville



"Yes, because they are very spooky on Halloween night and the witches come out and fly on their brooms and ghosts come out and scare you half to death and those goblins fly round you."
Marlan Hillister

Have A Question? Have a question for "Soundoff"? Send it to The Tyler County Booster, Box 248, Woodville, Texas 75979, or call 789-2469.

PERSONAL & FAMILY accent on tyler county



Mrs. Ralph Cordero

Turco - Cordero United in Marriage

Then Turco and Ralph Cordero of Woodville were married on August 12, 1983 in ceremonies in Dearborn, Michigan.

Kiwanis Turkey Trot Set November 5

Robert Jackson, Incoming President of the Kiwanis Club of Tyler, announced that November 5, 1983 is the date for the Seventy Annual Kiwanis Turkey Trot. The turkey trot is a series of walking and running events that are specifically designed for the young and old male and female and the beginning of the long time serious runner.

A.B.W.A. Meet Scheduled Nov 8

The Kiwanis Turkey Trot will again be held on Holiday Avenue in front of Jasper High School beginning at 9:30 a.m. The four events are: One Mile Walk, One Mile Run, 5.08K Meter Run (3.1 miles) and a 10.00K Meter Run (6.2 miles).



Kimborly Jordan and Ricky Grlasson

To Be Wed

Mr. & Mrs. Willie Jordan and Ricky Grlasson will be November 18, 1983 at First Baptist Church of Spurger. The bride is Kimborly Jordan, daughter of Mr. & Mrs. A. M. Williams, Spurger. The groom is Ricky Grlasson, son of Mr. & Mrs. J. L. Grlasson, Spurger. The ceremony will be officiated by the Rev. J. D. Brown. Friends and relatives are invited through the bride's invitation.

Retired Persons To Meet

The Woodville Chapter #297 of the American Association of Retired Persons will hold its regular meeting Monday, November 7, 1983 at 10 a.m. in the Heritage Room of the Woodville Inn.

Meeting Date Changed

The date for the regular meeting of the Colmanell Home Extension Club has been changed to November 15, 10 a.m. at the Community Center in Colmanell.

Ramblin Round Rockland

Recent visitors with Mrs. Alma Dean were a group of children. We pray that she will soon be up and about again. Sunday visitors in the 131 Brown home were Rhonda Cook, Donna Hoff, Janetta & Adolphus Wylie. It is a pleasure to have Mrs. & Mrs. Carl May were recent visitors with his mother, Mrs. Callie May of Jasper. We are happy and thankful to report that Mrs. Pat Lawson is at home after under going surgery at St. Elizabeth Hospital in Beaumont. She is being cared for under the watchful eye of her daughter, Candy. Our prayers continue for Norma Robinson who has been confined at Baptist Church, Shane home, having to spend most of the time in bed. The people of the Rocky Springs Community sprang a surprise on Dr. Joe W. Dickerson. After the morning services, they had prepared a birthday dinner for him. We understand that he is doing fine. It is good to have Paul Williams back home and doing fine after eye surgery in a Tulsa Hospital recently. The Rev. J.D. Brown preached at the Sunday morning service at the Hopewell Church near Woodville. We are glad to have Mrs. John Dickerson and son David of Colmanell back home for a while.

Commodities To Be Distributed Nov. 4

Ti. County Community Action, Inc. U.S.D.A. Commodities on Friday, Nov. 4 from 10 a.m. until 2 p.m. at the Woodville Fire Station.

4-H's To Meet November 8

There will be a meeting on November 8, 1983 at 6:30 in the classroom across from the Superintendant's office. All members are urged to come and bring a friend.



Jame Martin and Billy Davis

Wedding Date Announced

Arnette Richardson and Mr. Billy E. Davis, P.T.O. will be married on Saturday, November 5, 1983 at 2 p.m. at the church with a reception following. Friends and relatives are invited through the bride's invitation.

'Outstanding Citizen' Nominations Sought

The search is underway for a recipient of the Tyler County Chamber of Commerce's 1983 Outstanding Citizen Award. Nominations for this award are being requested by Chamber Secretary John L. Lohde. Letters should be mailed to the Chamber of Commerce, 502 N. Pine Street, Woodville, Texas. Your nominee must have resided in Tyler County, Texas, for at least one year. The award will be presented at the annual banquet on January 19, 1984. Previous recipients of this award are Tom Dick, Mann, J. B. Coffman, H. G. Sutton, Gary Hennigan, Major Alfred D. L. Marsh, Cecil Ogden, Olsen Mason and Aubrey Bradley. Nominations should be submitted before noon on Nov. 28. If you have any questions about the nomination procedure, call John Lohde at 283-2632 or stop by the Chamber office.

Lunch And Learn Focuses On Color

Lunch & Learn Series on color will be held on October 31, November 1, and November 3 at the Colmanell Home Extension Club Courtroom, during the noon hour. Each session will be about twenty minutes. Participants are invited to bring a sandwich and learn about color. Service is provided for all ages regardless of social-economic level. Personal or national origin is not a factor.

Holiday Calender

If your group, organization or club has a special holiday event let us know.

Deadline For Holiday Calender November 18, 1983

Superintendent's office. All members are urged to come and bring a friend.

Hillister Happenings

Mrs. Ethel Read enjoyed having Dr. and Mrs. Will Hickman of Tyler with her last week. On Wednesday all were in Kountze to visit with James and Jimmy Read and their wives. On Thursday, David Read of Houston came over for the day. Mrs. Ava D. Montgomery of Wilke was here last week for a visit with friends. Mrs. Will Hill of Kountze with Aurella Hayes spent a pleasant evening Friday visiting Glen Clark near Woodville. Mrs. Alma Wiggins is at home after a three week tour of the east. Among places visited were Fall River and Cape Cod Mass. Mr. and Mrs. J.H. Swan are at home after enjoying a visit in Oklahoma City, Okla. with their daughter and family.

Spurger P.T.O. To Meet

There will be a meeting of the Spurger P.T.O. at 3 p.m. on November 3 in the school cafeteria.

Advertising In the Booster

'People That Love' Center 'Have A Heart Help Someone' Opening Nov. 1st

Food & Clothing For All Of Tyler County

- For Those Out of Work
- For Senior Citizens
- For the Needy & Homeless

We Also Need Christian Volunteers If Interested, Please Call

1 to 5 p.m. Everyday Except Sunday

314 South Charlton Mrs. Florence Humphus Woodville 283-7034

It's Time To Start Your New Christmas Club Account For Next Year!

HO! HO! HO! AND NOW LET'S GO!

Today's exactly the right time to get going on your Christmas Club plans... and be ready for a Christmas treat when your club's completed.

Show away a few dollars... you'll do home many in your Christmas Club each week. And in less than a year, right on schedule, your Christmas Club check will be there in your mail.

Start today... start building up your Christmas fund for fun... for sheer Happy Holiday enjoyment! It's time... now!

CITIZENS STATE BANK

P. O. BOX 109 WOODVILLE, TEXAS 75979

Phone: 409-283-2561

BOOSTER

50 OPINIONS

Yours, Theirs, Ours

Get your facts first, then you can distort them as much as you please. Mark Twain



Open Mind

Here we go again. Seems like every time something new happens in the world we have to grab the World Almanac to find out who we're mad at this time.

It's a little bity island in the Caribbean, south and east of Cuba. Just off the Venezuelan coast of South America.

About twice as big as Washington, D.C. about 100,000 people (the world has a grand total of about 5 billion). About 100,000 American students are enrolled.

Germany also has under construction a 10,000 bed airport runway on the southern tip of the island being built by Cubans with some Russian advisors to help.

We understand that several other small countries in the Caribbean area are concerned that the United States is supporting a coup d'état in Grenada. We have a grand total of about 1,000 soldiers, and a bloody couple little bits of air assassinated the Premier and several cabinet members.

This poor dilemma for the United States. We have a treaty with the Eastern Caribbean countries that we will come help if they are in trouble. They asked for our assistance, and Marina Army Rangers and paratroopers, with some help from Jamaica and others went ashore to secure the place and also a grand total of about 1,000 soldiers, and a bloody couple little bits of air assassinated the Premier and several cabinet members.

On the other hand, if we really continued about Russia and Cuban intrusions on our doorstep, maybe we should draw a line somewhere in the Caribbean and tell them in no uncertain terms that they should quit meddling in an area that expresses our vital interests, including our clear and unshakable access to the sea lanes that straddle the Panama Canal.

Personally we don't really care if the coup in Grenada had anything to do with the price of oiling bananas.

and cause their principal exports).

Our guess would be that the Marxist faction that ran the country was considered a little too hand for the Soviet backed military that overthrew it.

The fact that the Cuban Coast, etc., on the atoll just happened to be an armed engineer, battalions of the Cuban army could hardly be considered usual. And a four star Russian general in charge of his country's soldiers would support a little anti-baby under the accepted protocol of military relations.

The government sees an event in the request of other nations in the area and will only stay until the present chaos is settled and those are the primary aims.

There is a lot of fear from around the world, including us, of a start in Afghanistan, a global epidemic, and all the other things you could expect when a superpower exerts its influence in its own interests.

The scariest thing is that the Afghans, Ethiopians, and Angolans are the most part to get involved. It's only when Uncle Sam gets involved that the United Nations and the Soviet bloc turn their public relations guns loose and give us what for.

They probably could be something and for the way as Americans prefer our own. We know that the Afghans, Ethiopians, and Angolans are the most part to get involved. It's only when Uncle Sam gets involved that the United Nations and the Soviet bloc turn their public relations guns loose and give us what for.

...a burden we all share.

From The County Court

Debbie L. Hester, 21, Woodville, guilty plea, \$400 fine, 1 year unadvised probation.

John Hester, 21, Jasper, guilty plea, \$400 fine, 1 year unadvised probation.

Jessie Lee Freeman, 20, Dorette, guilty plea, \$400 fine, 1 year unadvised probation.

William Carl Lewis, 32, Natchez, guilty plea, \$400 fine, 1 year unadvised probation.

James Eric Hampton, 30, Tyler, guilty plea, \$400 fine, 1 year unadvised probation.

Paul Albert Luhn, 17, Bona, guilty plea, \$400 fine, 1 year unadvised probation.

William Carl Lewis, 32, Natchez, guilty plea, \$400 fine, 1 year unadvised probation.

Charles Lewis, 30, Natchez, guilty plea, \$400 fine, 1 year unadvised probation.

Wesley Wayne Stone, 21, Natchez, guilty plea, \$400 fine, 1 year unadvised probation.

Harvey Redman, 19, Sprague, guilty plea, \$400 fine, 1 year unadvised probation.

Paul Albert Luhn, 17, Bona, guilty plea, \$400 fine, 1 year unadvised probation.

John Ray Smith Jr., 25, Bona, guilty plea, \$400 fine, 1 year unadvised probation.

Bruce Edward Young, 46, Chester, guilty plea, \$400 fine, 1 year unadvised probation.

Dear Editor:

Since our last letter to you some surprising events have taken place. We have arrived at two of the primary goals we had set for ourselves at the beginning of Woodville Alcoholics Anonymous.

The first goal was to develop enough interest and attraction to people who are suffering from alcoholism to increase the size of our group to a level that would require meeting more often. Through our efforts and guidance, and through the response to the articles in your paper, this far we have achieved that goal. We have formalized a second weekly meeting for Thursday night of each week, meetings to be held at the same location, and the same time period.

The Alcoholics Anonymous Group Calendar now appears as follows: each Monday night 8 p.m. meeting "closed" to A.A. members only and new members or newcomers with a drinking or alcoholic problem. Fourth Monday night of each month 8 p.m. "open meeting" open to the public or anyone interested in our program of Alcoholics Anonymous. Each Thursday night 8 p.m. study group meeting "closed" to A.A. members only, newcomers are welcome. Second Thursday night of each month 8 p.m. "speakers meeting" open to the public or anyone who would like to attend.

To further explain: The term "closed meeting" does not mean the meeting is cancelled that night. It means simply that only A.A. members are allowed in, along with anyone with a desire to find help to stop drinking. The term "open meeting" means the doors are open that night to the public at large, and all members who are delighted to have alcoholics, doctors, nurses, law enforcement members, and any other civic group or club members attend. On this meeting night we usually have guest speakers on a variety of subjects that will help alcoholics, professional people, and others who may have an interest in the workings of Alcoholics Anonymous and how we who are members have been able to arrest the progression of the disease called Alcoholism.

Let me point out that in every civic group, regardless of its size or its geographical location, there is always a certain percentage or proportion of persons who suffer from acute alcoholism or a personality problem that is alcohol related. Then there are the families, the employers, the bus drivers, the friends, the courts and jails, who are all affected by the disease these persons suffer from.

Nothing can be more baffling a problem to local officials, than a chronic alky, and no local facility deal with his particular situation. Nothing can puzzle a doctor or nurse more than a sick convulsive alky going into delirium tremens. If they have not had any dealings or information trying to handle such a situation. It may save your life.

Sincerely,
Secretary
Woodville A.A. Group

'Groundswell Support' Needed For Rockland

Group indicated that the Rockland project would be a request by the local area for the project. The project would be a request by the local area for the project. The project would be a request by the local area for the project.

Regional Water Interests Flood Woodville - Lake Rockland Talks

Local water interests gathered in Woodville for a series of talks regarding the proposed Lake Rockland project. The project would be a request by the local area for the project. The project would be a request by the local area for the project.



Local water interests gathered in Woodville for a series of talks regarding the proposed Lake Rockland project.

Woodville Junior High Report

The eighth graders at Woodville Junior High School have played a very successful role in their class this week. The eighth graders at Woodville Junior High School have played a very successful role in their class this week.

Letter To The Editor

I wonder what God thinks about all the money wasted on pleasure, politics, and other things everyday when there are so many who would be thankful for what we throw in the garbage.

Who's Responsible For Street

I would like to know who is responsible for the street to Magnolia Cemetery next to the Meador home off Nellus Street.

Express Your Opinions! Write A Letter To The Editor

EDITORIAL PAGE

THE TYLER COUNTY BOOSTER

SERVING TYLER COUNTY SINCE 1930

Editor/Publisher: JOHN L. TOMPKINS

General Manager: JOHN L. TOMPKINS

Advertising Manager: JOHN L. TOMPKINS

Business Manager: JOHN L. TOMPKINS

Printer: JOHN L. TOMPKINS

Address: 100 N. Main St., Woodville, Texas 75797

Phone: 251-3333

Subscription Rates: \$5.00 per year in advance

Single Copies: 25 cents

Postmaster: Please send me 25¢ or P.O. Box 246, Woodville, Texas 75797

TEXAS PRESS ASSOCIATION



Several people sitting around a table, possibly at a meeting or press conference.

SEEDS FROM THE SOWER
By Michael A. Guido, Mgr., Georgia
A teacher asked, "If I happened to see a man beating a donkey and made him stop, what would I do?"

answered him: "If there is one thing that I love more than anything else, it is to see a man beating a donkey and make him stop, what would I do?"



Gwendolyn Lane Witts
It's A Girl!
It's a girl, seven weeks weighing 7 lbs 12 oz. Her parents are Mr. and Mrs. John P. Witts, 21st St., Houston, Texas.

Church

- BEHAVIOR BAPTIST CHURCH
BETHANY BAPTIST CHURCH
BETHLEHEM BAPTIST CHURCH
BETHLEHEM BAPTIST CHURCH
BETHLEHEM BAPTIST CHURCH
BETHLEHEM BAPTIST CHURCH
BETHLEHEM BAPTIST CHURCH
BETHLEHEM BAPTIST CHURCH
BETHLEHEM BAPTIST CHURCH
BETHLEHEM BAPTIST CHURCH

Woodville Inn Motel
72 Rooms/Cable TV
Noon Buffet Daily
"Woodville's Finest"
Brookshire Bros.
Magnolia Drive-In Grocery
Knapp Ford Sales, Inc.
Church Directory And News Sponsored By The Above Merchants

Warfield's Gift Store
210 W. Bluff
Woodville, Texas
Will be held Thursday
Nov. 3 rd from 11 to 7 P.M.
Please come to our party
Door Prize & Refreshments
Vicki Warfield Jane Spencer
Subscribe Today

The Church Mouse
Rosale Shop
St. Paul's Church
Hwy. 190 - West
Open Tuesdays & Fridays
10 am to 2 pm
Subscribe Today

Smyly's Jewelry
14Kt. Ladies Diamond Watch Reg. Price \$3500** Sale Price \$1750**
14Kt. Gold Ladies Watch Reg. Price \$1350** Sale Price \$675**
30% Off Balova, Acetron, and Caravelle Watches
30% Off Diamond Rings and Wedding Sets

CHURCH BRIEFS

Clean-Ups Scheduled
The Main and Hickory Grove Comertics will have a clean-up on Friday, November 11 at 8 a.m.

Services Scheduled At New Facility
The members of Faith Lutheran Church announced that on Sunday, November 3, 1963, the formal dedication service will be held on the new facility.

Mayor Proclaims Nov. 11-12 Disabled American Veterans Forget-Me-Not
WHEREAS, our community has a continuing sense of gratitude to those disabled veterans who did so much to preserve the American way of life; and WHEREAS, the Disabled American Veterans Chapter #48 of the DAV has been established to care for the work in our community; and WHEREAS, the DAV offers free service to disabled veterans and their families in filing claims for government benefits and assists disabled veterans with medical, employment and other problems; and WHEREAS, the DAV meets emergency situations which may arise in the family of a disabled veteran; and WHEREAS, the DAV has chosen November 11 & 12 for its annual Forget-Me-Not campaign in our community; and has announced that all funds collected will be used for disabled veterans in the community; NOW, THEREFORE, I, Dr. Brian P. Babin, Mayor of the City of Woodville, do hereby proclaim November 11 and November 12 as DISABLED AMERICAN VETERANS FORGET-ME-NOT and urge the support of all citizens and organizations for these days.

OBITUARIES
CROSBY HEALER CRAWFORD
Funeral services for Crosby Healer Crawford, 66, of Wadley, were held on November 1, 1963, at 2 p.m. at Edwards Funeral Home Chapel with Roger Thompson officiating and burial at Fellowship cemetery, west of Warren.

Change In Bus Schedule
The Tyler County Aging Services' Mini-Bus Office is announcing a change in the bus schedule starting Nov. 1, 1963.

BIRTHS
It's A Boy!
William Brandon messel, Born 10:24 A.M.
It's A Girl!
Brittanie Sherree Colmwell, Born 10:28

Son Born To Middlebrooks
Mr. and Mrs. Bill Warren and Mrs. Bill Middlebrooks (nee Amber West) of Dallas, Texas, are the proud parents of a 10 lb. son, Carson Hank, born October 18 at Lee Regional Hospital in Houston. Grandparents are Mr. and Mrs. Bob West of Houston.

Attend The Services Of Your Choice Soon
Reynolds Office Supplies & Book Store
Together We Sell Come and See

Share Your Church News In By 5 p.m. Friday
Need Nursing Home Care?
You owe it to your loved one to visit Holiday Place Manor before making your decision. We're in a class of our own.

ATTEND THE SERVICES OF YOUR CHOICE SOON

Services

- ANTHONY BAPTIST CHURCH
BETHANY BAPTIST CHURCH
BETHLEHEM BAPTIST CHURCH
BETHLEHEM BAPTIST CHURCH
BETHLEHEM BAPTIST CHURCH
BETHLEHEM BAPTIST CHURCH
BETHLEHEM BAPTIST CHURCH
BETHLEHEM BAPTIST CHURCH
BETHLEHEM BAPTIST CHURCH
BETHLEHEM BAPTIST CHURCH

TYLER COUNTY HOSPITAL
HOSPITAL ADM
October 24, 1963
Glenn Anderson
Baby Roy Smith
Lauchie Phillips
Gusie Walters
Marilyn Miller
Eddie Barclay
Myrtle Harland
Mary Burnett
Inez Williams
Karen Sullivan
Sandra Percecut
Opal Mervant
Ronald Langham
Alice Graham
Annie Mason
Eddie Andrews
Verdi Wolf

Change In Bus Schedule
The Tyler County Aging Services' Mini-Bus Office is announcing a change in the bus schedule starting Nov. 1, 1963.

BIRTHS
It's A Boy!
William Brandon messel, Born 10:24 A.M.
It's A Girl!
Brittanie Sherree Colmwell, Born 10:28

Son Born To Middlebrooks
Mr. and Mrs. Bill Warren and Mrs. Bill Middlebrooks (nee Amber West) of Dallas, Texas, are the proud parents of a 10 lb. son, Carson Hank, born October 18 at Lee Regional Hospital in Houston. Grandparents are Mr. and Mrs. Bob West of Houston.

Attend The Services Of Your Choice Soon
Reynolds Office Supplies & Book Store
Together We Sell Come and See

Share Your Church News In By 5 p.m. Friday
Need Nursing Home Care?
You owe it to your loved one to visit Holiday Place Manor before making your decision. We're in a class of our own.

Jacket Jive

The 1983-84 Band Sweetheart and Beau are Tina Daniels and Gregory Bennett. The Yellowjackets Band will be competing in a marching contest on Nov. 5 at Little Cypress-Mauriceville Good Luck Band!

The Future Farmers of America are selling smoked turkeys at \$16.50 each. You will be contacted by a member of the FFA, who will be glad to take your order. The seniors are selling candy bars for \$1. each. They might be able to finance their senior trip with this sale.

A Gifted and Talented program has been launched in our elementary schools. It involves students identified by exams and talented program in their school.

Bulldog Growls

Last week the Bulldogs were crowned as the champions of the district. The Bulldogs are a team that is always on top. They are a team that is always on top. They are a team that is always on top.



WARRIORS These young ladies are always out front leading the team and building the fan base.

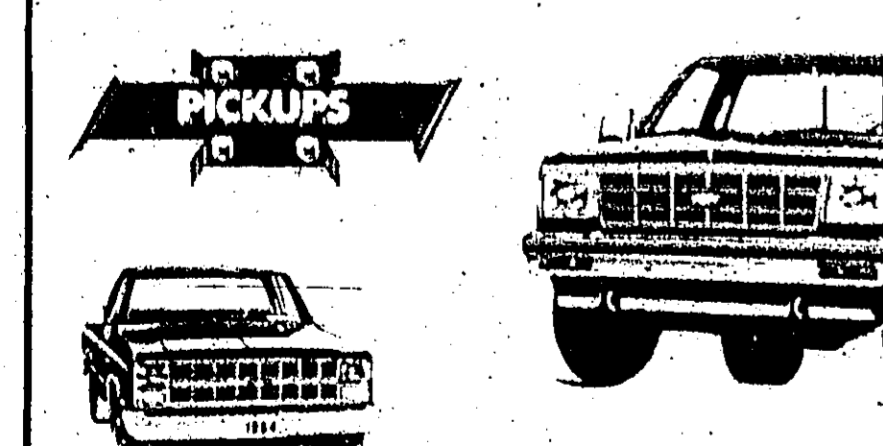
Woodville School Menu

Breakfast	French Toast	French Toast	French Toast
Breakfast	French Toast	French Toast	French Toast
Breakfast	French Toast	French Toast	French Toast
Breakfast	French Toast	French Toast	French Toast

U.I.L. Marching Contest

The Woodville U.I.L. Marching Band is competing in the district contest. They are a team that is always on top. They are a team that is always on top.

Come See The New 1984 Chevrolets



CHEVROLET taking charge.
Allison Chevrolet
837-2244 283-7605
Colmesneil

HIGH FIDELITY

Luther Lowery Scholastic Editor

The Woodville school football team has a record of 8-1. They are a team that is always on top. They are a team that is always on top.

The Woodville school football team has a record of 8-1. They are a team that is always on top. They are a team that is always on top.

New U.I.L. Alignment

The University Interscholastic League has published its new alignment for the 1983-84 season. Woodville is in District 19A.

Outdoor Partner

Each year as the fall season approaches, we eagerly await the arrival of many things. For one person it might be the change in color of the foliage. For another it might be the cool mornings, or the first bite in the fireplace on the eve of the wild goose, or the end of the harvest season, all pleasant thoughts at this time. For us, it is the combination of all these things plus the anticipation of hunting season.

I would like to take this opportunity to thank you partner, for the many, many hours of good times we have shared. Some may have been unpleasant at the time, but all have made fond memories. Like the time we got stuck on the first morning of deer season in a heavy rain. How we sat all morning with our feet in the car seat because water was covering the floor of the car and we finally walked out at noon. Or maybe the time the trailer lifted and we lost the load in the highway. Or the time I fell out of the boat in fifty degree weather and we had to quit fishing all pleasant memories.

Also, partner, I know I don't show very well or still my share of the bucks but I really appreciate your giving me good shots. You have to admit, I am a fair outdoorsman though.

And partner, a special thanks for those several long years when for personal reasons I was not capable of handling my share of the load financially, and you understood and included me in your hunting and fishing plans anyway. I really appreciate that.

Also, partner, there is a lot of feeling safe on a trip, and I know that I never have to worry with you. You practice hunting and water safety to the utmost, or nearly so anyway. We do argue a little about lightning thought. Oh, well, what if you do miss a big buck once in a while because I wouldn't stay on the woods, or a big bass because I wouldn't stay on the lake. Any thinking that I can see close enough to make me leave.

But partner, you have taught me well the lesson that it is not important to catch a big buck or catch a big bass in order to have a good time and a successful trip. Our success is measured in appreciation of the pleasant experiences in the field and good times we have shared. We had to learn this in order to endure because there were a lot of times we didn't kill anything or catch much either.

Partner, I look forward to each hunting and fishing season, for many reasons, but probably the most important is the pleasant memories of times shared with you.

Thanks, partner, for being a real sportsman and a true friend for these past twenty years. This year we'll get the big one. Your friend,

Eagles Nest

Another successful week has passed at the Great W.I.L.S. The second week is quickly coming to an end, and the teachers type up test papers. The students appear to be studying diligently to be able to pass.

The J.V. and Varsity volleyball teams have had a successful year. The J.V. team finished off their season with a record of 5-3. On Thursday the young Eagles defeated Hutton 6-15, and 15-11. The Varsity team is now in the District playoffs. They also defeated Hutton 15-5, and 15-11. Our team is now in the District playoffs and will play on Friday at San Day.

The Woodville school football team has a record of 8-1. They are a team that is always on top. They are a team that is always on top.



CHEERLEADERS These girls are always lively and cheerful at the Woodville U.I.L. games. They are a team that is always on top.

BEST FOOD BUYS

- Prices Good Nov. 2 thru Nov. 5
 - Heavy Beef Brisket \$1.19 lb.
 - Smoked Pork Ribs 1.39 lb.
 - Heavy Beef Sirloin 2.99 lb.
 - Heavy Beef Round Steak 2.79 lb.
 - Boneless Chuck Steak 1.89 lb.
 - Boneless Chuck Roast 1.69 lb.
 - Extra Lean Ground Chuck 1 lb. or more 1.09 lb.
 - Hormel Eckrich Wessera, 1 lb. pk. 1.79 lb.
 - Korn-King Boneless Ham whole 1.50 lb.
 - Half 1.79 lb.
 - Fresh Water Cauliflower 1.49 lb.
 - Hormel Silver Side Bacon, 3 lbs. or more 1.99 lb.
 - Our Own Country Smoked Sausage 2.80 lb.
 - End Pot Pork Chops 1.99 lb.
 - Center Cut Pork Chops 2.49 lb.
 - Smoked Pork Chops 2.49 lb.
 - All 2 liter coke products plus tax 1.09
 - Trophy Cap Milk, gal. 2.35
 - III Dry Paper Towels .69
 - Sweet Potatoes .49
 - Apples .69
- We gladly accept food stamps. Visa, Texaco, MasterCard & American Express.

Grammer's Grocery
W. Bluff Woodville 283-2520

Sabine Pass Whips Chester

Sabine Pass played a good football game Friday night by whipping Chester by a score of 50-0. The Yellowjackets were just not ready to play and they scored their 7th and 8th touchdowns in the first quarter and one point in the second quarter.

The Woodville school football team has a record of 8-1. They are a team that is always on top. They are a team that is always on top.

Woodville Girls Win District

The Lady Eagles won the district championship in volleyball. They are a team that is always on top. They are a team that is always on top.

Warrior Whoop

The Woodville school football team has a record of 8-1. They are a team that is always on top. They are a team that is always on top.

Outdoor Partner

Each year as the fall season approaches, we eagerly await the arrival of many things. For one person it might be the change in color of the foliage. For another it might be the cool mornings, or the first bite in the fireplace on the eve of the wild goose, or the end of the harvest season, all pleasant thoughts at this time. For us, it is the combination of all these things plus the anticipation of hunting season.

Best Food Buys

- Prices Good Nov. 2 thru Nov. 5
- Heavy Beef Brisket \$1.19 lb.
- Smoked Pork Ribs 1.39 lb.
- Heavy Beef Sirloin 2.99 lb.
- Heavy Beef Round Steak 2.79 lb.
- Boneless Chuck Steak 1.89 lb.
- Boneless Chuck Roast 1.69 lb.
- Extra Lean Ground Chuck 1 lb. or more 1.09 lb.
- Hormel Eckrich Wessera, 1 lb. pk. 1.79 lb.
- Korn-King Boneless Ham whole 1.50 lb.
- Half 1.79 lb.
- Fresh Water Cauliflower 1.49 lb.
- Hormel Silver Side Bacon, 3 lbs. or more 1.99 lb.
- Our Own Country Smoked Sausage 2.80 lb.
- End Pot Pork Chops 1.99 lb.
- Center Cut Pork Chops 2.49 lb.
- Smoked Pork Chops 2.49 lb.
- All 2 liter coke products plus tax 1.09
- Trophy Cap Milk, gal. 2.35
- III Dry Paper Towels .69
- Sweet Potatoes .49
- Apples .69

Grammer's Grocery
W. Bluff Woodville 283-2520

The Tyler County Booster

SPORTS



Woodville Girls Win District

The Lady Eagles won the district championship in volleyball. They are a team that is always on top. They are a team that is always on top.

Warriors Smothered By SFA

The Woodville school football team has a record of 8-1. They are a team that is always on top. They are a team that is always on top.

High Island 14 Colmesneil 0

The Colmesneil against the Huntington. The Bulldogs got several drives started in the second quarter but they were not able to score.

Dupree & Spells Place Second in Lone Star Tournament

John Dupree and Jerry Spells of Woodville won second place in the Lone Star team fish tournament held out of Galloway, Marine, and Lake Livingston last to the two fishermen.

Best Food Buys

- Prices Good Nov. 2 thru Nov. 5
- Heavy Beef Brisket \$1.19 lb.
- Smoked Pork Ribs 1.39 lb.
- Heavy Beef Sirloin 2.99 lb.
- Heavy Beef Round Steak 2.79 lb.
- Boneless Chuck Steak 1.89 lb.
- Boneless Chuck Roast 1.69 lb.
- Extra Lean Ground Chuck 1 lb. or more 1.09 lb.
- Hormel Eckrich Wessera, 1 lb. pk. 1.79 lb.
- Korn-King Boneless Ham whole 1.50 lb.
- Half 1.79 lb.
- Fresh Water Cauliflower 1.49 lb.
- Hormel Silver Side Bacon, 3 lbs. or more 1.99 lb.
- Our Own Country Smoked Sausage 2.80 lb.
- End Pot Pork Chops 1.99 lb.
- Center Cut Pork Chops 2.49 lb.
- Smoked Pork Chops 2.49 lb.
- All 2 liter coke products plus tax 1.09
- Trophy Cap Milk, gal. 2.35
- III Dry Paper Towels .69
- Sweet Potatoes .49
- Apples .69

Grammer's Grocery
W. Bluff Woodville 283-2520

Eagles 28

S Augustine 21

The Woodville football team defeated San Augustine 28-21. The Eagles scored 14 points in the first quarter and 14 points in the second quarter. San Augustine scored 7 points in the first quarter and 14 points in the second quarter.

Warriors Smothered By SFA

The Woodville school football team has a record of 8-1. They are a team that is always on top. They are a team that is always on top.

High Island 14 Colmesneil 0

The Colmesneil against the Huntington. The Bulldogs got several drives started in the second quarter but they were not able to score.

Dupree & Spells Place Second in Lone Star Tournament

John Dupree and Jerry Spells of Woodville won second place in the Lone Star team fish tournament held out of Galloway, Marine, and Lake Livingston last to the two fishermen.

Best Food Buys

- Prices Good Nov. 2 thru Nov. 5
- Heavy Beef Brisket \$1.19 lb.
- Smoked Pork Ribs 1.39 lb.
- Heavy Beef Sirloin 2.99 lb.
- Heavy Beef Round Steak 2.79 lb.
- Boneless Chuck Steak 1.89 lb.
- Boneless Chuck Roast 1.69 lb.
- Extra Lean Ground Chuck 1 lb. or more 1.09 lb.
- Hormel Eckrich Wessera, 1 lb. pk. 1.79 lb.
- Korn-King Boneless Ham whole 1.50 lb.
- Half 1.79 lb.
- Fresh Water Cauliflower 1.49 lb.
- Hormel Silver Side Bacon, 3 lbs. or more 1.99 lb.
- Our Own Country Smoked Sausage 2.80 lb.
- End Pot Pork Chops 1.99 lb.
- Center Cut Pork Chops 2.49 lb.
- Smoked Pork Chops 2.49 lb.
- All 2 liter coke products plus tax 1.09
- Trophy Cap Milk, gal. 2.35
- III Dry Paper Towels .69
- Sweet Potatoes .49
- Apples .69

Grammer's Grocery
W. Bluff Woodville 283-2520

Opening

Monday
November 7th



first national bank of woodville

P.O. Box 149, Woodville, Texas 75979

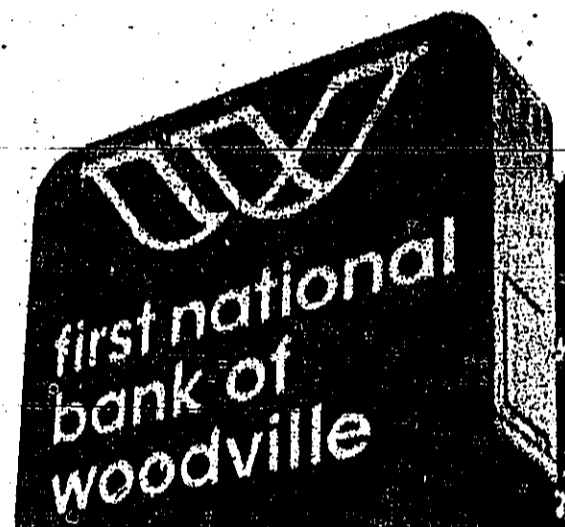


Lobby Hours:

Monday - Thursday 9:00 to 3:00
Friday: 9:00 to 6:00

Drive-In Hours:

Monday - Friday:
8:00 to 6:00



Come In And Get Acquainted With Our Officers And Staff

Watch For GRAND OPENING CELEBRATION Soon

P.O. Box 149 Woodville, Texas 75979



283-8103/1-800-392-5454

CLASSIFIEDS

Deadline: Monday 5 pm Call 283-2869

Special Buy ON 1983 USED FORD VEHICLES
1983 Mercury Marquis 4 Dr. Tilt Cruise AM/FM Stereo Automatic Power Windows Steering Brakes Cloth seats Vinyl top V6 \$2750.00
1983 Ford LTD 4 DR. Tilt Cruise AM/FM Stereo V6 Automatic Power Windows Steering Brakes Vinyl Top Cloth Int. \$2450.00
1983 Ford Fairmont Futura 4 DR 6 cyl AM/FM Stereo Power Windows Steering Brakes Cloth seats Vinyl top V6 \$2995.00
1983 Ford Fairmont Futura 4 DR 6 cyl Power Brakes & Steering AM/FM Stereo \$2995.00

These are Low Mileage And Like New 48 Months Financing Available

Knapp Ford Sales
104 Pino Street Woodville
Hwy. 69 & 287 283-2826

USED CAR VALUES
1978 Dodge Mark V Loaded, Air, Power, Automatic, Tilt, Cruise, AM/FM Tape, 60/40 Power Seat, Leathers 1001 Pontiac Firebird - Air, Power, Automatic, AM/FM Tape, like New \$6850.00
1982 Ford Escort - 6 cyl Automatic, Air, Power Brakes & Steering \$5995.00
1979 Ford LTD Lariat - Automatic, Air, Tilt, Cruise, Power Windows, Power Brakes & Steering, 4 DR 6 cyl, AM/FM Stereo \$5495.00
1978 Buick 88 Olds Royale - 4 Dr, AM/FM Radio, Cruise, Tilt, Air, Automatic \$4805.00
1980 Chev. Malibu - 4 Dr, Air, Power, Automatic, Radio AM/FM Cassette, Cyl. Locks, 4 Sp Trans, 4 cyl. \$4595.00
1981 Chevrolet - 1 DR, Hatchback, Air, Automatic, Radio, was \$3995.00 Now \$3595.00
1980 Plymouth Horizon - Air, Automatic, Radio, Nice Car, Real good gas mileage, was \$3795.00 Now \$3295.00
1979 Mercury Zephyr - 4 DR, 6 cyl, Air, Automatic, Radio \$3650.00
1977 Pontiac Ventura - 2 DR, 43,000 miles, One owner, Air, Automatic, Power, V6 \$3295.00
1976 Buick Estate Wagon - Luggage Rack, Cruise, Tilt, Full Power, AM/FM Tape, Air, Automatic, Like New 42,000 miles \$2995.00
1985 Dodge - 4 DR, Automatic, Air, Radio, Real nice car. Good transportation \$1495.00

USED TRUCK VALUES
1982 Ford F100 - Air, Dual Tanks, 6 cyl, 4 sp overdrive, AM/FM, Power, 12,000 miles \$7495.00
1981 Ford F100 Explorer - Cruise, AM/FM, Air, Automatic \$6495.00
1983 Ranger - Power Brakes, Air, AM/FM Stereo, 4 speed 1982 Ford F100 - Std. trans., 6 cyl, Real nice truck to have the wood home in \$6095.00
1980 Ford F150 XLT Explorer - 351 V8, Air, Power, Automatic, Tilt, Cruise, Dual tanks, AM/FM Tape, Camper top \$8995.00
1981 Corolla Pick-up - Air, 5 speed, Radio \$4495.00
1978 F150 - Automatic, Air, Power, Radio - Real good work truck \$3450.00
We have 12 mo/12000 and 24 mo/24000 mile warranties available for used vehicles and Ford Motor financing available on all new and used vehicles. Come in now and deal with us. We will trade.

Sanderson Home Improvements
SIDING
VINYL - ALUMINUM - STEEL

INSULATION INSTALLED
with siding - can cut your energy bill by half...
Siding will not chip, flake or fade - 40 Yrs Mrs. Warranty

Carports - Awnings
Roofs - Gutters
Screen Rooms
Remodeling - Painting

FREE ESTIMATES - FINANCING
283-5430
601 Anderson Home Owned

CARD OF THANKS
Thank you for the food and flowers given as an expression of love during the loss of our loved one. Special thanks to Rev. K.H. Watson and Rev. Charles Boyce.
The family of H.H. (Shirley) Kinball
44-116

GARAGE SALE
6 family - Depressed - All things South of Woodville - Furniture, crochets, toys, housewares, children's clothes, odds & ends. Nov. 5 from 8-12. No early sales. 44-116

MOVING SALE
Sat. November 5/10 a.m. to 11:30 a.m. in 1111 Holly St. Clothes, books, linens, antiques and misc. items. 44-116

FOR SALE
4 miles North of Woodville on Hwy 69 Nov 5, 8-4 Phone 837-5169 Lots of nice clothes & home wares. 44-116

GARAGE SALE
4 1/2 miles South of Canton Lights at Dun B. E. King. 1974 Dodge - 4 door, odd furniture, nice clothes. Large carpet with pool towel cloth. 44-116

GARAGE SALE
Lots of toys and games. Just in time for Christmas. Also, bedspread, curtains and other furniture. Sat. Nov. 5 from 8 to 12 Timberland Addition. 44-116

GARAGE SALE
Friday, November 4, 205 E. West Bartley Terrace off North Branch St. Lots of hair care. 44-116

YARD SALE
November 2, 3 & 4 from 9 to 5. West Bartley Terrace off North Branch St. Clothes, furniture and misc. Follow signs. 44-116

GARAGE SALE
Live oak, Behind the Conoco Station, Fri. & Sat. Nov. 4 & 5. Starts at 6:30. 44-116

GARAGE SALE
37 Lake Drive Cheatewood Addition. Lots of clothes, linens, bed spreads. All kinds of odds & ends. Nov. 4th from 8-5; Nov. 5 from 8-12. No early sales. 44-116

GARAGE SALE
3 family: Fri. & Sat., 4th & 5th, 4 miles 190 W. Old Livingston Rd. Follow signs. 44-116

GARAGE SALE
3 family: 516 Timberland, Nov. 5th, 8-5. Toys, Christmas decorations, crochets, items, housewares, children's clothes, women's, mens clothes, odds & ends. 44-116

FOR SALE
Ladies size 12 coat. Clean. Worn only 3 times. Paid \$85. Will sell for \$45. Old warm. 283-5447 or 547-2794. 44-116

The Tyler County BOOSTER CLASSIFIED ADS GET RESULTS



WOODVILLE SHOWPLACE FOR SALE!!
Four bedroom 3 bath, Central Air and Heat home located in serene central Woodville residential location with minimal traffic. This over 2000 sq. foot home is accented with beautiful double faced fireplace - carpeted throughout except for parquet flooring and tile bathroom. Spacious rooms and large storage space finds this home located amongst tall pine trees near the Tyler County Hospital. It accentuates the front and side entrance ways leading into this custom draped residence. All built in's in kitchen. Patio area in rear plus 80 foot driveway leads up to spacious garage with automatic door opener and additional parking in this home is for someone who enjoys living in a quiet residential atmosphere. Price starts at mid 70's. Call 283-5699.

DUMP TRUCK SERVICE
•Iron Ore Gravel
•Fill Dirt •Top Soil •Sand
Greg Kirkpatrick
547-2207

Don McLaron's Cafe & Groc.
Now Serving
L.P. Gas Bottles
RV's, Trucks Etc.
Hwy 190 near 92 Dam II 4091 283-3181

DOOMER & DAUGHTERS REPAIR
Hwy 69 Warren, Texas 77664
Phone 409-547-2822
Complete Diesel Engine Service
Factory Trained Caterpillar Mechanics
We repair cars, trucks, heavy equipment, logging equipment and hydraulic systems. We give credit!
Special this week Oil, Lube & Filter \$10.00

Wanted To Buy
Pine Saw Logs
HIGHEST PRICES PAID!
Bon Wier Lumber Company, Ltd.
P.O. Box 240, Bon Wier, Tex. 75928
CALL: 409-397-4216 or 409-397-4227
NIGHT: 409-379-8285 or 409-379-3906

Change Of Ownership Announcement
Sears is glad to announce...
Mr. Ron Cornley as the new Sears Catalog Sales Merchant in Woodville, Texas. The business will continue to operate from the same location of 719 S. Magnolia. You can shop by telephone by calling 283-3756.
Mr. Ron Cornley is anxious to offer personal service and invites you to come by to get acquainted.
719 S. Magnolia Woodville, Texas 283-3756

Firewood For Sale
Pickup Or Deliver
429-3184

ALUMI-TEX COMPANY
FREE ESTIMATES
For All Your Home Improvement Needs
Home Improvement center!
• Siding - Vinyl Aluminum
• Patio Covers
• Car Ports
• Window Awnings
• Siding
• Storm Doors & Windows
• Sunrooms
• Woodwork - Mantelpieces
• Shutters
• Vent-A-System Attic Ventilation
• Siding Glass Doors
• Add-A-Room
• Garage Doors
• Wood, Steel, Aluminum
• Scaffolding, Aluminum, Nestle
• Gutters
• Gentle Garage Door Openers

National Tour Group Will Visit Tyler County

East Texas will be hosting National Tour Association members...

Eight tour operators will Dallas Fort Worth Airport on November...

Steenhagen, Lake area will be investigated, A...

East Texas is being sponsored by NTA and the Texas Tourist Development Agency...

"We're fortunate Texas offers such contrast," explains John Sprague...

ing things about their area, colorful local life...

ITCC has worked with tour operators to bring more motorists to the region...

Not since the U.S.S. R. launched such an inquiry about the quality of public education...

Several practices that have become widespread in schools...

Disciplined Learning Needed In Schools

By now, we should all be familiar with the alarming statistics...

Public's growing awareness of the substantial drop in educational achievement...

and expected of our students. Study after study has shown that we need to relieve the wheel of public education...

Following trends toward social promotion and grade skipping...

allowing students to avoid tough courses by taking electives that will make no difference in their education...

Several studies have been designed to improve the quality of education...

Eliminating certain distinctions between requirements in education...

What we need to believe is that our recent studies have told us a different message...

NOTICE OF CALCULATION OF EFFECTIVE TAX RATE AND PUBLICATION OF ESTIMATED UNINCUMBERED FUND BALANCES

Notice of calculation of effective tax rate and publication of estimated unincumbered fund balances for Tyler County, Texas.

Table with columns for Tax Type and Tax Rate, listing various taxes and their rates.

CALCULATIONS USED TO DETERMINE EFFECTIVE TAX RATE

Table showing calculations for effective tax rate, including total tax levied and total taxable value.

COMPLIANCE BY

Table detailing compliance for maintenance and operation (M&O) tax rate for 1983.

INTEREST AND DIVIDEND (I&D) TAX RATE

Table detailing compliance for interest and dividend (I&D) tax rate for 1983.

APPROXIMATE COLLATERAL RATE

Table detailing compliance for approximate collateral rate for 1983.

1983 EFFECTIVE TAX RATE FOR EACH TAX

Summary table of 1983 effective tax rates for each tax category.

NOTICE OF CALCULATION OF EFFECTIVE TAX RATE AND PUBLICATION OF ESTIMATED UNINCUMBERED FUND BALANCES

Notice of calculation of effective tax rate and publication of estimated unincumbered fund balances for Tyler County, Texas.

Table with columns for Tax Type and Tax Rate, listing various taxes and their rates.

CALCULATIONS USED TO DETERMINE EFFECTIVE TAX RATE

Table showing calculations for effective tax rate, including total tax levied and total taxable value.

COMPLIANCE BY

Table detailing compliance for maintenance and operation (M&O) tax rate for 1983.

INTEREST AND DIVIDEND (I&D) TAX RATE

Table detailing compliance for interest and dividend (I&D) tax rate for 1983.

APPROXIMATE COLLATERAL RATE

Table detailing compliance for approximate collateral rate for 1983.

1983 EFFECTIVE TAX RATE FOR EACH TAX

Summary table of 1983 effective tax rates for each tax category.

NOTICE OF CALCULATION OF EFFECTIVE TAX RATE AND PUBLICATION OF ESTIMATED UNINCUMBERED FUND BALANCES

Notice of calculation of effective tax rate and publication of estimated unincumbered fund balances for Tyler County, Texas.

Table with columns for Tax Type and Tax Rate, listing various taxes and their rates.

CALCULATIONS USED TO DETERMINE EFFECTIVE TAX RATE

Table showing calculations for effective tax rate, including total tax levied and total taxable value.

COMPLIANCE BY

Table detailing compliance for maintenance and operation (M&O) tax rate for 1983.

INTEREST AND DIVIDEND (I&D) TAX RATE

Table detailing compliance for interest and dividend (I&D) tax rate for 1983.

APPROXIMATE COLLATERAL RATE

Table detailing compliance for approximate collateral rate for 1983.

1983 EFFECTIVE TAX RATE FOR EACH TAX

Summary table of 1983 effective tax rates for each tax category.

NOTICE OF CALCULATION OF EFFECTIVE TAX RATE AND PUBLICATION OF ESTIMATED UNINCUMBERED FUND BALANCES

Notice of calculation of effective tax rate and publication of estimated unincumbered fund balances for Tyler County, Texas.

Table with columns for Tax Type and Tax Rate, listing various taxes and their rates.

CALCULATIONS USED TO DETERMINE EFFECTIVE TAX RATE

Table showing calculations for effective tax rate, including total tax levied and total taxable value.

COMPLIANCE BY

Table detailing compliance for maintenance and operation (M&O) tax rate for 1983.

INTEREST AND DIVIDEND (I&D) TAX RATE

Table detailing compliance for interest and dividend (I&D) tax rate for 1983.

APPROXIMATE COLLATERAL RATE

Table detailing compliance for approximate collateral rate for 1983.

1983 EFFECTIVE TAX RATE FOR EACH TAX

Summary table of 1983 effective tax rates for each tax category.

Preservation Workshop Set For Nov. 18-19

Everyone who is interested in the history, culture, and architecture of East Texas is invited to attend the Piny Woods Regional Preservation Workshop...

Family Violence Centers Eyed

The opportunity to seek counseling on a basis from abuse could make the difference in saving lives and money. Most important, at a time when families in trouble need all the help they can get...

Low Reports Surplus Of Hay In County

Although prolonged drought conditions have created hay shortages in some areas, other areas have a surplus of hay. The list of available hay is being compiled by the county...

Election Day Office Closings

Major, Mildred, and Regional Commanders of the Texas Department of Public Safety will be closed on Election Day, November 8, 1983.

Bob's Prescription Shop

30% OFF

Hurry!

14kt Gold Chains

Prices Good Nov 4, 5, and 6 Only!

1010 W. Bluff 283-3073

Subscribe

AUCTION BLOCK
Sale Every Thursday Night
283-5333 7:00 p.m. 283-7834
Everyone Welcome
You may find all types

Merchandise: Furniture Dishes Tools
Small and large appliances
Pots and Pans Antiques
Building Materials
and much much more
New & Used Merchandise
Consignment Welcome
Auctioneer: Col. Larry Grammer
TXS 094-1106
717 West Bluff Woodville

Fall Foliage Adds Color To East Texas

Nature is beginning to pull back the curtain on Autumn in the hardwood pine forests of East Texas, and with milder, cooler weather and smaller crowds that fall in East Texas brings travelers aren't by the beauty of fall foliage colors and attractions at an unhurried pace. Watch the weather map three or four days after a cold snap or good frost the forests will really put on a colorful leaf show. The forests extend from just above the Beaumont Houston area north some 400 miles to

the Red River, and from the Louisiana line to as far as 120 miles west from mid October through Thanksgiving. Travelers see the foliage change to bright hues of gold, crimson and russets. Normally, peak color is about the second week of November in the southernmost parts of the region, and with favorable color often lasts through the Thanksgiving holidays. To aid travelers in obtaining information on travel routes, times, tolls, etc. around the East Texas Chamber of Commerce provides travelers with the following information:

Map of attractions and special events along the East Texas Highway (Highway 70) is available at the Chamber office. The Chamber also provides information on the following attractions and events:

All areas of the East Texas region report a colorful fall foliage season. The following are some of the areas reported to be in peak color:

San Augustine: Mild weather, fishing good. Fishing season: Turkey Creek. Beginning to look like fall, ducks, geese, and other migratory birds. No geese, but fall foliage is good. The area is a great place to visit. The area is a great place to visit. The area is a great place to visit.

Advertise In The Booster

C. E. DuMont, D.P.M. Podiatrist - Foot Specialist
Wishes to announce the opening of his new office for Medical and Surgical Management of all foot disorders.
Thursday mornings 8:10 N. Houston - Livingston
Call for appointment 327-5600

311 S. Magnolia Woodville
283-7928
Open 10 a.m. Closed Wednesday
NEW BOOKS USED BOOKS TRADE or SELL
JANIE'S BOOK NOOK

South Texas Savings And Loan Association

Check Out Our New Modern Design Safety Deposit Boxes

400 W. Bluff Woodville 283-3747

Branches in Kountze & Livingston P.O. Box 936

Enter the Tyler County Booster Pigskin Pick Football Contest

You may win \$20.00.

That's right team tear out the coupon on the following page and you may intercept the \$20.00 cash prize from the Tyler County Booster.

WAL-MART FREE SNOWFLAKE ORNAMENT

With 95¢ deposit on our Holiday Portrait Collection

ONLY \$12.95

Those Days Only:
Nov. 1, 2, 3, 4, 5
Tues. thru Sat.
Daily: 10am - 8pm

US Highway 69 & 287 South Woodville

SUBSCRIBE

Neal Elected To Board Of Trustees

At the annual meeting of the Professional Bondsmen of Texas, Kyle Neal was elected to the membership for a two year term on the Board of Trustees. Neal was elected October 23 while attending the State Convention held at the Hilton Hotel in Austin, Texas.

Neal has been a member of the Professional Bondsmen of Texas since 1978. He has been a member of the Board of Trustees since 1981. Neal is currently a member of the Board of Trustees of the Tyler County Board of Trustees.

HARRIS COUNTRY MARKET
Hwy. 92 at DAM B
Mon.-Sun. 429-3712 7A.M.-7P.M.
We have Hunting & Fishing License Ammunition
We Accept Food Stamps

Beginning Wed. Nov. 2 - Tues. Nov. 8

12 Oz. Can Coke	.39¢ each
Borden 1/2 gal. Milk	\$1.09
10 1/2 oz. Rich N Chew Cookies	\$1.39
1/2 lb. Tostitos	\$1.19
Preston Gal Milk	\$2.09
Borden's Ice Cream 1/2 Gal.	\$1.99

Echrich Boneless Ham	\$2.29 lb.
Echrich 1/2 lb. Z Franks	\$1.39 Pkg.
Echrich Smoked Sausage	\$1.89 lb.
Beasley Smoked Sausage	\$1.89 lb.
Decker Korn Kiel Smoked Bacon	\$.79 lb.
Pork Steaks	\$1.09 lb.
Center Cut Pork Chops	\$1.99 lb.
Fresh Pork Pan Sausage	\$1.19 lb.
Fresh Pork Ribs	\$.99 lb.
Slab Bacon	\$1.39 lb.
Fresh Pork Roast	\$1.09 lb.

NOV. SPECIAL

5 Lbs. Sirloin Steaks	5 Lbs. Ground Chuck
5 Lbs. Round Steak	5 Lbs. Beef Roast (Chuck or Crown)
5 Lbs. Center Cut Pork Chops	5 Lbs. Shoulder Steak
5 LB. Pork Steaks	

35 Lb. LB. for \$60.00

Mann Furniture
Since 1905... J.P. Mann - Gen. Mch. & Furn.
106 W. Bluff 283-3740
AWARD-WINNING SERVICE!
QUALITY BRANDS!
RCA 13" DIAG. **COLOR TV \$249.95**
ELECTRONIC TUNING
100% SOLID STATE CIRCUITRY

Mann Direct Furniture Showcase
302 N. Magnolia 283-5211

Roy's Super-Sav

283-2163
304 S. Magnolia

WOODVILLE WINNER - Leslie Hicks earned another \$20 this week in the Booster Pigskin Pick Football Contest. With the end of the season closing in, it's time to try your skill in this week's state of games!

Check Out Our SAFE, SECURE (Many Sizes Available) Safety Deposit Boxes

Now Available

SOUTH TEXAS SAVINGS AND LOAN ASSOCIATION
302 N. Magnolia Woodville

DOZER WORK

- PONDS
- EXCAVATION
- LAND CLEARING
- ROADS BUILDING • SWAMP DOZER

MOST REASONABLE IN EAST TEXAS!
NO MOVING CHARGE ON MOST JOBS

WELDING SERVICE
FABRICATION • PORTABLE • SHOP
GATES • CATTLE GUARDS • CATTLE RAILS

409-283-7915
DEWAYNE COLLIER - WOODVILLE

We're The Best In Our FIELD

And That's Our **GOAL**

ALLISON POLE MILL

547-3321

Warren High's Player of the Week

We Support The Warren Warriors

DAVIS Food Store
Warren, Texas

Hair and Face Place Proudly Presents Dottie Atwell

Formerly with L. S. Cosmetology in Beaumont, Texas

Specializing In:
Haircutting
Haircoloring
Restructuring Techniques
Styling & Perming

Beginning on Nov. 8, 1983

Operators: 283-3216
Loretta Bartz
Rose Franks
Dottie Atwell
Thelma Cain - Owner & Operator

105 South Village

Advertise In The Booster

Good Luck To All in Tyler County in Football Teams!

WAL-MART
Hwy 69 & 287 South Woodville, Texas
Store Hours: 9 a.m. to 8 p.m.
Monday - Saturday

PONTIAC

MID-ENGINE DESIGN GIVES IT AN AMAZING COMMAND OF THE ROAD!

PONTIAC WE SELL EXCITEMENT

A & M Motor Co.
605 So. Magnolia 283-2824

Citizens State Bank

Also Don't Forget Our New Drive-In Banking Hours: Monday Thru Friday 8 a.m. to 4 p.m. and Friday 8 a.m. to 5:30 p.m.

Ask About **MPACT**
"Give Us A Chance To Say Yes"

FDN
283-2861

CHEER Your Farm Bureau Agent

- Tires
- Batteries

Tyler County Tractor Inc.
810 S. Magnolia 283-5322

Warren High's Player of the Week

We Support The Warren Warriors

DAVIS Food Store
Warren, Texas

ROAST BONE STEAK
2 69

BACON
1 29

SMOKED SAUSAGE
1 99

ROLL SAUSAGE
99

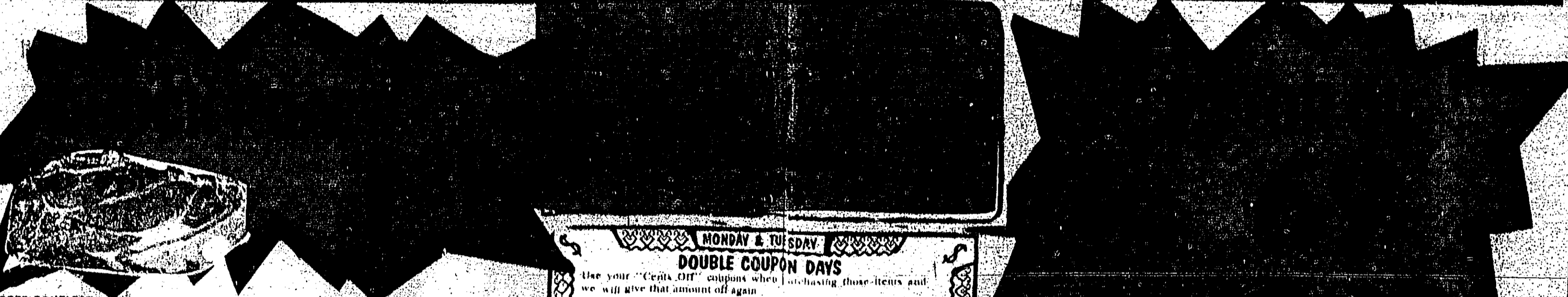
GROUND BEEF

WINNER
MRS. BERTHA HALL
\$ 2000⁰⁰

MRS. BERTHA HALL
PICKED UP \$2000
FOR OUR
LADY OF THE PINES
CATHOLIC CHURCH
DERIVED FROM THE
1% DONATION OFF
OF REGISTER TAPES

2nd BIG GAME PERIOD
CASH & GROCERIES GIVE-A-WAY
3 BIG WINNERS EACH WEEK

Must be at least 18 years of age to participate
Never Less Than \$500.00
ONLY IF NONE OF THE 3 NEW CONTESTANTS
WIN THE MONEY FOR THE PREVIOUS WEEK
WEEK NO 18 \$600.00
No purchase is required.



BEEF BONELESS RUMP ROAST	LB.	\$1.79
BEEF BONELESS CHUCK STEAK	LB.	\$1.49
BEEF BONELESS STEW MEAT	LB.	\$1.79
BEEF TENDERIZED GRAVY STEAK	LB.	\$1.89
BEEF TENDERIZED ROUND STEAK	LB.	\$1.99
BEEF CENTER CUT ROUND STEAK	LB.	\$1.89
BEEF TOP ROUND STEAK	LB.	\$1.99
BEEF EYE OF ROUND ROAST	LB.	\$2.29
BEEF CUTLETS	LB.	\$2.29
BEEF THIN SLICE BREAKFAST STEAK	LB.	\$2.49

MONDAY & TUESDAY
DOUBLE COUPON DAYS

Use your "Cents Off" coupons when purchasing these items and we will give that amount off again.
50¢ off coupon + Fairway gives 50¢ off = \$1.00 off
Double coupon offer does not apply to other retailer coupons. Coupons not to exceed 50¢ in value of "DIME" coupons. Refund on coupon not to exceed more than price of item. Double coupon applies to regular priced merchandise ONLY.

FRESH SLICED BEEF LIVER	LB.	89¢
FRESH PORK SPARE RIBS	LB.	\$1.39
WHOLE 17-20 LB. CUT-FREE PORK LOINS	LB.	\$1.49
BEEF BONELESS ENGLISH CUT ROAST	LB.	\$1.49
ODDISH STEAK FINGERS	12 OZ.	\$1.89
FRESH MARKET MADE SAUSAGE	LB.	\$1.19
FRESH CUT PORK STEAK	LB.	\$1.39
FRESH MADE PORK CUTLETS	LB.	\$1.49
ODDISH BLUE RIBBON ALL MEAT FRANKS	12 OZ.	99¢

OCEAN-SPRAY CRANBERRY SAUCE	6 oz.	69¢
TOMATOES-N-GREEN CHILLIS		53¢
KRAFT HICKORY SMOKE BBQ SAUCE	16 oz.	99¢
RUNY TOMATO SAUCE	8 oz.	3/100
LUCKY LEAF APPLE JUICE	48 oz.	\$1.73
DOMSTOCK CHERRY PIE FILLING	21 oz.	\$1.89
BAKERS JOY CREAM OF WHEAT SCHOOL BOX	10 oz.	\$1.29
GENERIC TEA BAGS	100 CT.	\$1.09
SPAN LUNCHEON MEAT	12 oz.	\$1.59
SWISS MISS HOT COCOA MIX	12 oz.	\$1.29
20 BELOW 140-80 FT. FREEZER WRAP		\$2.99
PRINCELLA CUT YAMS	25 oz.	99¢
MOUNTAIN DEW	4 PACK 12 OZ. CANS	\$1.99
2 ALARM CHILI MIX	8 OZ.	\$1.19

DAIRY FAVORITES

PHILADELPHIA CREAM CHEESE	8 oz.	99¢
KRAFT 10-WL MIRACLE MARGARINE	16 oz.	99¢
MINUTE MAID ORANGE JUICE	64 oz.	\$1.73
FISHER SANDWICH MATES	12 OZ. SINGLES	99¢
WILLSBURY BUTTERFLAKE or CRESENT DINNER ROLLS	CAN	99¢

HARVEST OF FRESH DELICIOUS PRODUCE

YOUR CHOICE SALAD AND OR VEGETABLE

ICE CREAM
1 79

STAR-KIST

WALDORF

HITOWN GRAVY

White Cloud

Edy's



Football Contest

• All entries must be placed in entry box at the BOOSTER office by 12 noon on Friday or in the mail (Tyler County Booster P.O. Box 248, Woodville, Texas, 75779) postmarked before Friday.

• Entry can be made on entry blank or facsimile of such drawn on a 3" x 5" card. All entries become the property of Tyler County Booster.

ONLY ONE ENTRY PER PERSON PER WEEK WILL BE ACCEPTED.

• If a game is cancelled or rescheduled, that game will not be judged.

• Every effort will be made to notify each week's winners by noon the following Monday. If a winner cannot be contacted by that time he/she has one week to claim prize money after his/her name appears in paper.

You may win \$2000.

ENTRY BLANK

Name _____

Address _____

Phone Where You Can Be Reached _____

Saturday _____ Monday (8-12 noon) _____

<input type="checkbox"/> HUNTINGTON AT WEST SABINE	<input type="checkbox"/> KOUNTZE AT QUANGREVE
<input type="checkbox"/> NEWTON AT DIBOLL	<input type="checkbox"/> PORT NECHES AT THOMAS JEFFERSON
<input type="checkbox"/> KIRBYVILLE AT WARREN	<input type="checkbox"/> SAN AUGUSTINE AT CENTER
<input type="checkbox"/> HEMPHILL AT WOODVILLE	<input type="checkbox"/> SABINE PASS AT APPLE SPRINGS
<input type="checkbox"/> CHESTER AT COLMESNEIL	<input type="checkbox"/> SPA AT BUENA

Give Score _____ Tiebreaker _____ Give Score _____

CINCINNATI AT HOUSTON



TOM'S JR.

Next To Tom's Supermarket
429-3438

Open 5 am til 10 P.M.
7 Days A Week

GAS - ICE - GRO. - OIL - MILK - DRINKS - CIG.

WORKING MAN'S STORE



BIG WINNER! Todd Head won a shopping \$20 in this week's Booster Pigskin Pick Football Contest. This youngster was pretty good at selecting last week's games and says he'll enter again this week. How 'bout you?

Clemmons

Insurance & Real Estate
Complete Real Estate Service

- HOMES
- BUSINESS PROPERTIES
- FARMS & RANCHES

Appraisals

106 S. Charlton
283-2514

Give Me A VIDEO
Give Me A...
Give Me A...
Give Me A...
Give Me A...
What Have You Got...
Fairway Video.

OUR WAY IS YOUR WAY

Fairway FOODS

PRINT SHOP

- LETTERHEADS
- ENVELOPES
- BUSINESS CARDS
- PHOTOCOPIES

106 S. Charlton
Woodville
CALL 283-2569

20% OFF BUCK KNIVES

SALE GOOD THRU 11-8-83

ENTIRE LINE INCLUDED

- POCKET KNIVES
- HUNTING KNIVES
- LOCK BLADES
- PEN KNIVES

SULLIVAN'S
211 W. Bluff 283-2231

Pick A Winner From

DOUG'S AUTO SALES
410 Magnolia St. Phone 283-9650
Woodville, Texas 75779

CARS

- 1978 Ford T-Bird - Loaded, Clean \$3695.
- 1981 Pontiac Bonneville 1 Dr. Loaded \$8295.
- 1974 Chev. Monte Carlo, Loaded \$1595.
- 1980 Ford Fairmont 4 Dr. Auto, Air, Power - SOLD new - 16,000 miles.
- 1981 Pontiac Bonneville 2 Dr. Loaded \$7995.00
- 1977 Chev. Monte Carlo Landau - Extra, also loaded. \$395.00

TRUCKS

- 1980 Chev. Bonanza - V-8, Loaded \$5995.
- 1979 El Camino - SOLD Nice Loaded \$4995.

QUALITY USED CARS & TRUCKS - SINCE 1968
BUY - SELL - TRADE

"WE APPRECIATE YOUR BUSINESS"

Rent A New Ford Escort

For Only \$14 per day & 14¢ per Mile

KNAPP FORD

Intersection Of Hwy 89 & 287 Woodville 283-2626

Meet The Thicket

We have a fascinating friend we'd like you to know. Our friend's name is the Big Thicket, a primitive and beautiful land that's our neighbor in East Texas.

Unique to North America, the Big Thicket is a place where plants from tropical rain forests and arctic tundra grow side by side. There are more than 30 species of orchids here. Come and meet the Big Thicket. It's a friend you'll want to keep. How about writing some other friends of the Thicket for specific information about your visit to a wonderful place.

Big Thicket Association
P.O. Box 198
Saraland, Texas 77585

Temple EastTex

We Support All Tyler County Football Teams!!!

JASPER FEDERAL
1008 WEST BLUFF WOODVILLE, TEXAS 283-3716

SONIC Happy Eating

Watch Our Everyday Specials!

- HAMBURGERS
- ONION RINGS

1008 WEST BLUFF WOODVILLE, TEXAS 283-3716

OPEN MONDAY-SATURDAY 8 a.m. to 7 p.m. SUNDAY 8 a.m. to 3 p.m.

TOM'S SUPERMARKET

"Our cow is dead... but the BULL goes on forever!"

Ad Date Nov. 2 thru Nov. 8
LIMIT RIGHTS RESERVED

SPURGER, TEXAS

(409) 429-3456

RATH MEAT OR BEEF WEINERS

12 oz pkg **89¢**

BOSTON BUTT PORK ROAST

1 LB. **99¢**

OUR OWN PORK PAN SAUSAGE

HOT OR MILD **\$1.19**

FLOUR - 5 LB. BAG 89¢

TISSUE - 4 ROLL PKG 99¢

PORK & BEANS 30 OZ CAN 3/\$1.00

FRUIT DRINKS 46 OZ CAN 69¢

BOUTTES CAJUN BOUDIN

\$1.49 lb.

SAUCE 16 OZ JAR \$1.69

ALPHA BITS 15 OZ PKG \$1.79

DIAPERS DAYTIME DISPOSABLE 18 CT PKG \$3.50

DOG FOOD 23 OZ CAN 69¢

IMPERIAL MARGARINE 1 LB 39¢

IN QUARTERS

9-10.8 OZ PKG ASSORTED VARIETIES TOTTENUS PIZZA \$1.09

SLICED SLAB BACON

1 LB. \$1.69

COCA-COLA 2 LITRE BOTTLE \$1.19

JAMA ORANGE OR APPLE JELLY 2 LB JAR \$1.29

JAMA PEANUT 18 OZ JAR \$1.49

PEANUT BUTTER GOLD, CORAL OR WHITE 1 LB JAR 3/\$1.00

SOAP 14 OZ BAR 3/\$1.00

FILTERS 100 CT. PACKAGE 79¢

CARNATION COFFEEMATE 16 OZ JAR \$1.95

BIALARMON JUICE 32 OZ BTL \$1.49

5 LB. Bag POTATOES 69¢

CRANFORD DELICIOUS APPLES 1 LB GELLO 59¢

CARROTS 29¢

GRAPEFRUIT 4/\$1.00

SNOWDRIFT SHORTENING 5 LB CAN \$1.99

HUNGRY JACK COMPLETE PANCAKE MIX 21 LB PKG \$1.35

MRS BUTTERWORTH'S SYRUP 36 OZ BOTTLE \$2.49

AMERICAN BEAUTY NOODLES 12 OZ PKG 59¢

12 OZ BTL WINDEX SPRAY \$1.09

BRYAN SMOKED WHOLE PICNICS

1 LB. 79¢

BEASLEY SMOKED SAUSAGE

HOT OR MILD **\$1.89 lb.**

TEXSUN GRAPEFRUIT JUICE 46 OZ CAN 69¢

SMOKEY CANYON TURKEY 3 LB AVE. HAMS \$1.69

LEAN MEATY PORK RIBS \$1.29

SMALL FOR B-B-Q

DOG CHOW 10 LB BAG \$4.59

KRAFT ORANGE JUICE 95¢

SWEETHEART PINK LIQUID DETERGENT 33 OZ BTL 89¢

FRESH PORK STEAKS \$1.09

Brookshire Bros.

• THE BEST FOR LESS •



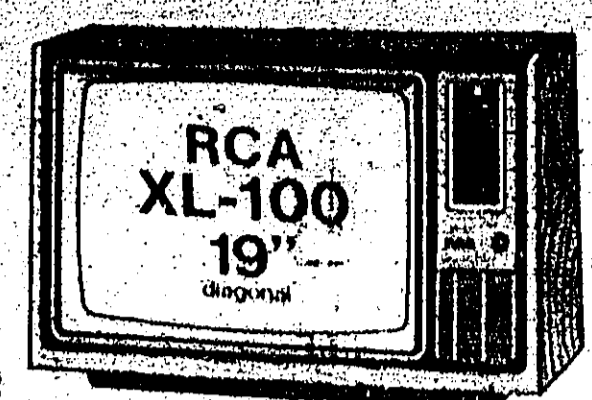
WILD BILL BINGO

WIN \$10,000 IN GOLD OR CASH!

\$142,857 in Cash Prizes Available!

No Purchase Necessary.

Row	Col 1	Col 2	Col 3	Col 4	Col 5
1	15	20	25	30	35
2	40	45	50	55	60
3	65	70	75	80	85
4	90	95	00	05	10



REGISTER TO WIN R. C. A. XL-100 19 INCH COLOR T.V.

REGISTRATION BEGINS ON NOV. 3 AND ENDS ON NOV. 26 WITH DRAWING HELD ON NOV. 26.

NO PURCHASE NECESSARY. NEED NOT BE PRESENT TO WIN. MUST BE 18 OR OLDER TO ENTER.

CHEER
POWDERED DETERGENT
49 OZ. BOX LIMIT ONE
\$1.99
SAVE 40%

LADY BORDEN ICE CREAM
ASST. FLAVORS
1/2 GAL.
\$2.59
SAVE 70%

HY-TOP PURE CANE SUGAR
5 LB. BAG
99¢
SAVE 70%
LIMIT 1 WITH \$10.00 OR MORE PUR.

HY-TOP HOMO MILK
GALLON
\$1.95
SAVE 10%

HOMESTYLE LITE FLUFF BISCUITS
6 CANS 10
\$1.
SAVE 38%

HI-DRI PAPER TOWELS
2 LARGE ROLLS
\$1.
SAVE 18%

BUSH'S WHITE OR GOLDEN HOMINY
SAVE 33%
4 15 1/2 oz. CANS
\$1.

SHOWBOAT RINGS OR REGULAR SPAGHETTI
SAVE 33%
4 14 OZ. CANS
\$1.

BUSH'S PINTO BEANS
SAVE 45%
4 16 oz. CANS
\$1.

HY-TOP FLOUR
5 LB. BAG
49¢

KRAFT MIRACLE WHIP 32 oz.
\$1.09
WITH ONE FILLED BOOKLET

BUSH'S FIELD PEAS
BLACK EYES - PURPLE HULLS
3 15 oz. CANS
\$1.

SHOWBOAT PORK & BEANS
3 15 oz. CANS
\$1.

BUSH'S BABY BUTTER BEANS
SAVE 30%
3 16 oz. CANS
\$1.

SHOP OUR SELECTION OF QUALITY MEATS

HAM 78¢ LB.
THIGHS 78¢ LB.

BROOKSHIRE BROS. ORIGINAL SMOKED TURKEYS LB. \$1.29

BROOKSHIRE BROS. HAMBURGER PATTIES 3 LBS. \$2.89

HOLLY FARMS U.S.D.A. GRADE A CUT-UP FRYER LB. 59¢

BROOKSHIRE BROS. CHICKEN HENS USDA GRADE A 1 LB. 69¢

BROOKSHIRE BROS. BACON 10 LB. \$2.19

BROOKSHIRE BROS. CANNED HAMS 4 LBS. \$9.99

BROOKSHIRE BROS. TURKEY BREAST 1 LB. \$1.89

HOLLY FARMS USDA GRADE A BREAST 1 LB. \$1.39

HOLLY FARMS USDA GRADE A WINGS 1 LB. 79¢

HOLLY FARMS CHICKEN BOLOGNA 1 LB. \$1.09

HOLLY FARMS CHICKEN WEINERS 12 OZ. 89¢

HOLLY FARMS BACON 12 OZ. \$1.39

HOLLY FARMS PORK LINKS 12 OZ. \$1.19

HOLLY FARMS CHORPED HAM 12 OZ. \$1.49

HOLLY FARMS BOLOGNA 12 OZ. \$1.49

HOLLY FARMS WILSON CHERRY SICHED BACON 12 OZ. \$1.69

HOLLY FARMS CENTER CUT SMOKED HAM ROAST 12 OZ. \$1.48

BORDEN'S DELICIOUS BUTTERMILK 1/2 GAL. \$1.29

NESTLE'S QUIK CHOCOLATE MILK 1/2 GAL. \$1.69

HUGGIES DIAPERS
NEWBORN 24 OVERNIGHT 144 DAYTIME 18 FODDLER 124 TOYLINE 32 DAYTIME 46
\$3.08 \$8.18

FROZEN FOOD SPECIALS

JENO'S PIZZA 10 oz. \$1.09

HY-TOP WHIP TOPPING 8 oz. 69¢

GORTON CRUNCHY FISH STICKS 8 oz. \$1.39

BRIDGEPORT PORK HOUSE ROLLS PKG 24 \$1.09

HY-TOP CRINKLE CUT FRENCH FRIES 2 LB. BAG 89¢

POWDERED DETERGENT FAB 49oz. \$1.99

BATHROOM TISSUE CHARMIN \$1.08

HY-TOP CRISP POTATO CHIPS 8oz. BAG \$1.09

ANTISEPTIC MOUTHWASH SAVE 50%
LISTERINE 18oz. \$1.99

DISHWASHING LIQUID RJAX 20% OFF LABEL
22oz. \$1.39

DIET PEPPER FREE DR. PEPPER 2 LITER \$1.29

MRS. BAIRD'S CHOC. BUTTER-SPICE COUPON AVAILABLE ONLY IN STORE SERVICED BY MRS. BAIRD'S
4 FOR \$1.

FRESH PRODUCE WITH THAT JUST PICKED FLAVOR

EXTRA FANCY RED DELICIOUS APPLES LB. 39¢

TEXAS RUBY RED GRAPEFRUIT 5 FOR \$1.

LARGE BELL PEPPER 5 FOR \$1.

SWEET POTATOES LB. 49¢

FRESH CARROTS 2 LB. BAG 69¢

FRESH SWEET CORN 4 EARS \$1.

SIX INCH DIFFENBACHA EACH \$3.99

FRESH PLANET FINE CLAREMONT CHINA 5 PC. PLACE SETTINGS ONLY \$4.99

COLOR ENLARGEMENTS Bigger Is Better

5x7 .88
8x10 \$1.88

from your favorite color negative or slide. FAST QUALITY SERVICE.

EXTRA STAMPS WITH THIS COUPON AND PURCHASE OF GLADE AIR FRESHENER 7 oz. Nov. 2-8, 1983

EXTRA STAMPS WITH THIS COUPON AND \$5.00 OR MORE PURCHASE (EXCLUDING CIGARETTES) Nov. 2-8, 1983

KRAFT PLAIN, JALAPENO, PIMENTO CHEESE WHIZ 8 OZ. \$1.29

KRAFT CHILE PEPPER JUICE ORANGE GRAPEFRUIT ORANGE-PINEAPPLE 3.2 OZ. 99¢

NEW FREEDOM MARIACOS PKG 12 \$1.39

KLEENEX FACIAL TISSUES BOX 175 78¢

KLEENEX FACIAL TISSUES BOX 250 \$1.29

SHOCK RAZOR BLADES SOLIDS BOX 100 88¢

INSPECTOR PLATINUM PLUS RAZOR BLADES PKG 12 \$3.68

STICK DOUBLE EDGE PLATINUM PLUS RAZOR BLADES PKG 12 66¢

DOUBLE TUESDAY

on all purchases

THESE PRICES GOOD 7 DAYS WED. NOV. 2 - TUES. NOV. 8 OPEN EVERY SUNDAY FOR YOUR SHOPPING CONVENIENCE.

Brookshire Bros.

• THE BEST FOR LESS •

Open Sunday
7:30 am - 8:00 pm Mon.-Sat.
9 am - 7 pm Sunday

FALL SALE

Entire Stock Samsonite & American Tourister
LUGGAGE
 30-40% OFF
 Layaway Now For Christmas

Jr & Missy Sizes
JEANS
 Assorted Styles
 Famous Brands
1/2 OFF

Sale Table Of Ladies
FALL SHOES
 Up To
1/2 OFF

Selected Group
GIRL'S JEANS
 Sizes 7-14
1/2 OFF

Selected Group Health-Tex & Other Famous Brands
INFANT WEAR
30% OFF

Special Purchase Ship 'N Shore and Donnkonny
BLOUSES
 Sizes 6-18
\$12⁸⁸ & 14⁸⁸
 Good For Gifting!

Jordache Calvin Klein
JEANS
 *35% Now **\$29⁹⁹**

Men's & Boy's
SWEAT SUITS
25% OFF
 (For Jogging, Walking & Leisure Wear)

Boys
JACKETS
20% OFF
 Choose from Quilted or Denim Jackets
 Assorted Colors Size 6-20

Men's Heavy
JACKETS
 Assorted Styles & Colors
 Big Selection
25% OFF

Entire Stock Haggard
SLACKS
 Belt & Beltless Models
25% OFF

Great Selection Nurse Matos
SHOES
 on Sale from
\$8⁵⁰ \$26⁸⁸

Men's Corduroy
SPORTCOATS
 \$72 to \$125
25% OFF
 Reg. Price

20% OFF
BOY'S VESTS

Jr & Missy Sizes
SPORTS WEAR
 Slacks, Skirts, Sweaters, Blouses Etc. Etc.
1/2 OFF COME SEE!

J.B. BEST & CO.
 Plenty of Free Parking Behind Store
 Free Gift Wrap on Purchases

Site Of Caddoan Village Discovered

An archeological site of potential significance was discovered recently during the survey of a proposed oil and gas well location on the Sabine National Forest in Shelby County. The well location was proposed by Haged Oil Company of Oklahoma City who has acquired a lease for drilling rights in the area.

According to National Forests in Texas Supervisor Mike Langan, from the evidence found in the area, the site appears to be a large Caddoan village and mound site. The discovery was made during an archeological survey, done by archeologists from a consulting firm based in Austin. A subsequent investigation by the archeologist for the National Forests in Texas confirmed the discovery.

Archeological surveys, part of the stand and environmental review process, followed by the U.S. Forest Service, are required by historic preservation laws and are conducted for all projects which in-

volve the surface disturbance of national forest lands. When such sites are discovered, the Forest Service protects them from damage until their significance is established. A site evaluation is necessary to determine the importance of the site.

In this case, the Forest Service and Haged Oil Company agreed that the most desirable location in terms of resource management, was to find an alternate location for the oil and gas well which would prevent the disturbance of the archeological resources.

An alternate location has been elected and drilling will begin soon. A Haged Oil Company spokesman indicated that the new site was less likely to yield a successful well than the site originally selected.

To date, only limited investigations have been performed on the site, but an intensive testing and evaluation program will be done and should determine the exact size and age of the site.

VETERANS
 We would like to honor all Veterans on Veterans Day, November 11, 1983, from 4 P.M. to 7 P.M. in the ballroom of the Woodville Inn. It would be nice for all Veterans in Tyler County to get acquainted and this would be our opportunity also to honor those who have passed on.
 Drinks (non-alcoholic) and snacks will be served. ALL FREE.
 Please come and bring your spouse.
 Sponsored by James H. Dillon and Patie Post of Veterans of Foreign Wars

Chester Super Stop
 Special Good Nov. 4-9

THIS WEEKEND ONLY!!
 We will pump your gas and clean your windshield at **SELF-SERVICE PRICES!**

Gulf Gasoline

LOGGERS - Check our prices on hydraulic fluid, oil, filters, diesel, etc.

3 Liter COKE 99c
HOT LINK CAN COKE 99c
PIZZAS \$1.39
CHILI \$1.09
HOT COCOA \$1.00
CATSUP \$1.49

BOLOGNA 79c
SALAMI 79c
PAPER TOWELS 89c
TOSTITOS 99c

CHOCOLATE CHIP COOKIES \$1.59
PIZZA \$1.59

Quantity Rights Reserved

Brookshire Bros.
 THE BEST FOR LESS

YOUR FULL SERVICE DISCOUNT PHARMACY
 201 CHARITON - WOODVILLE PHARMACY
 Mon.-Fri. 8:30 am-6 pm Sat. 9am-5pm
 Sunday Available For Emergency Services

LOWEST PRESCRIPTION PRICES PLUS S&H GREEN STAMPS

NOW AVAILABLE! WORLD'S FINEST ALOE VERA SKIN-HAIR BEAUTY CARE PRODUCTS!

ASCRIPIN A/D FOR ARTHRITIS 100S **\$2.79**

ENSURE PLUS 8 OZ. CAN **88c**

SALINE SOLUTION BAUSCH & LOMB 8 OZ. **\$2.29**

COTTON TIP SWABS HY-TOP 180S **99c**

FORMULA 44D VICKS 3 OZ. **\$2.29**

ALCOHOL HY-TOP ISOPROPYL 2 PT. BTL. **\$1.**

DOXIDAN 10 CAPS **\$1.29**

FOSFREE VITAMINS 100S **\$6.95**

10% DISCOUNT TO ALL SENIOR CITIZENS!

EXTRA STAMPS
 WITH THIS COUPON AND PURCHASE OF ANY NEW PRESCRIPTION
 Good Thru Nov. 8, 1983

EXTRA STAMPS
 ANY PRESCRIPTION REFILL OF PRESCRIPTION TRANSFER

VISA