

## Wards Of Texas Will Locate Near Wal-Mart

A new hamburger restaurant will be located just south of the Wal-Mart Shopping Center, according to Robert Jackson, representing Ward's Western, Inc. of Mississippi who announced that the Woodville location will be the first for the state of Texas.



Ward's of Texas Hamburger Restaurant Will Open Soon Adjacent to Wal-Mart

## Thieves Net \$900 At Dairy Queen

Woodville Police are continuing to investigate the late night burglary of the Dairy Queen on West Bluff Street in Woodville. The thieves "a little over \$900" from the office safe according to investigating officer Tracy Ferguson. No arrests have been made but police are still actively investigating the case.



2 Sections 16 Pages  
Vol. 55, No. 1 - 20c

# THE TYLER COUNTY BOOSTER

SERVING TYLER COUNTY SINCE 1930

INSIDE TODAY:  
Start The New Year Off Right By Shopping Tyler County With Diane  
Page 3A

January 3, 1985  
Woodville, Texas 75979



CHRISTMAS WINNER—of a Cabbage Patch Doll from J. B. Best & Co. as part of the Christmas promotion sponsored by Woodville businesses and Woodville High School DECA is Louise Faircloth (left) shown with J. B. Best employees Helen Sloan and DECA employee (right) Missy Owens.

## D. C. Band Trip Develops

Plans for the Woodville High School Band participation in the Cherry Blossom Parade in Washington, D. C. were presented to Woodville School trustees at the school board meeting December 18th, by Band Director Robert Renfro.

Total costs for the 3 day trip, which will occur during the school districts spring break in April, were estimated at \$35,360 of which approximately \$8,000 remains to be raised. Renfro told trustees that parents had been asked to contribute \$77.50 per band student. Sales of

ads in the program of a special spring concert of the band is expected to supply the remaining funds, according to Renfro.

In other business, Woodville School trustees commended nineteen Woodville I.S.D. instructors for which Board President, Alva Cook described as "a lot of extra work, beyond the call of duty in working for the school district". Instructors Jan Borel, Martha Sue Gregory, Phillis Hull, Ann Mackey, Mary Ann Risinger, Karen Sullivan, Dickey Watts and Gall Woods for work with the

### At Board Decision

## Warren TSTA President "Shocked"

By Annabeth Willis

"I am shocked!" was TSTA President Pat Long's reaction to the refusal by the Warren Board to establish a Consultation Committee for the District. The proposed committee would have consisted of three board members and a TSTA faculty representative from each campus and would have met monthly to discuss matters of educational policy and conditions of employment. According to Long, "The education of the children of Warren School District will be enhanced when open communications and harmonious working relations exist between the Board and the teaching staff." Board member, Walter McPherson's motion to give the committee a six-month trial died for lack of a second. Following the five-hour meeting, Long said, "Teachers are the only people who really know what is going on in the schools, and they aren't interested in talking with us." TSTA Uniserv Representative Pat Morahan stated, "We had been led to believe that the Board would be receptive to the idea...we haven't given up."

Superintendent Adolph Hryhorchuk with breach of contract and racial discrimination in the matter of non-renewed Warren teacher James Wolf. According to Morahan, the Board has twenty days to answer the charges made. If a satisfactory settlement is not made, the case will at that time be placed on the court docket.

Warren teach Bonnie Burrow, who had a grievance pending in the District, was paid \$646.54. This was the amount she maintained

had been promised by the Superintendent for reimbursement of certification expenses.

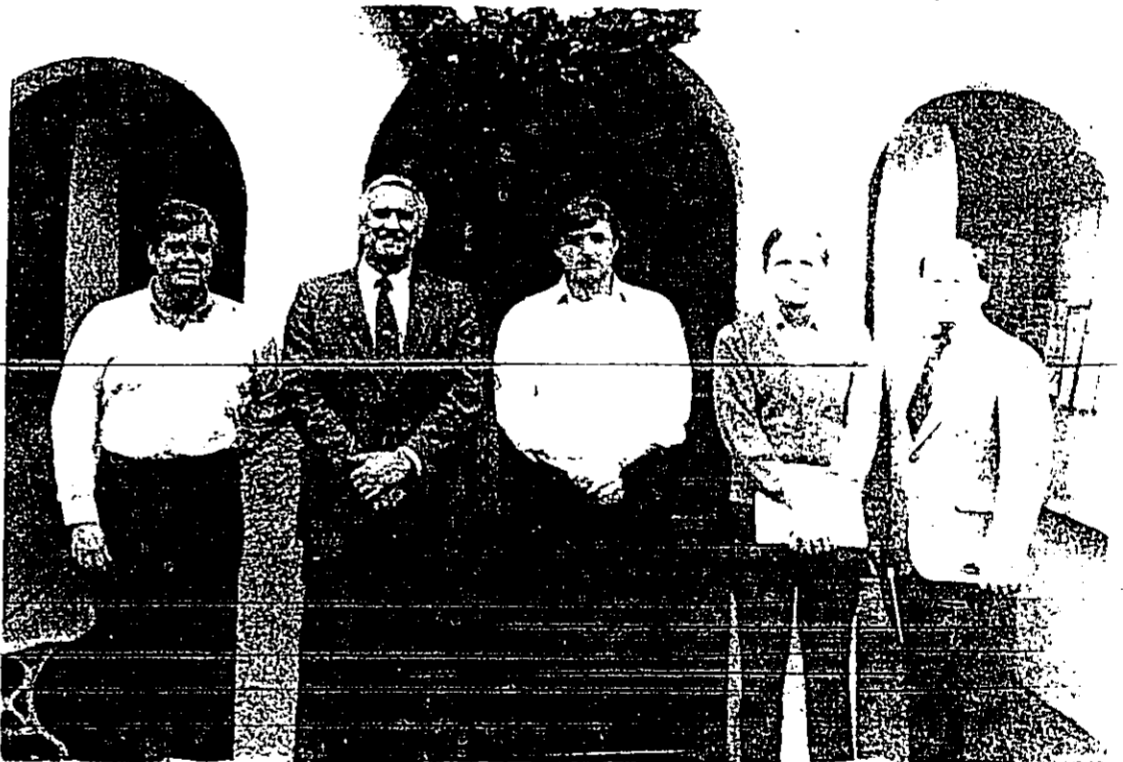
A report was presented by the Superintendent regarding the possibility of transporting Fred Elementary students home at an earlier time. According to Transportation Supervisor Herman Nolen there is "no money" to pay the cost of double routes and purchase of new buses that would be necessary to make the runs. Nolen also said that "Fred parents don't want their younger children arriving home ahead of their older children."

Fred Elementary Principal Alan Mitchell reported that students on his campus are doing very well in their coursework. He could not see how the longer day was hurting them. No action was taken by the Board regarding different bus schedules.

The Board voted to repair the Junior High Auditorium stage at a cost of \$2,330.00. Bids will be let for refinishing the Warren Elementary Boor. John O'Dell presented a report on the football stadium lights. The Board will study the information O'Dell gave them and come up with a proposal for replacing the lights.

The 1985-86 school calendar was approved. It is as follows: September 3, first day of classes, October 4, November 28, 29, December 23, January 3, March 24, 28, holidays, August 23, 26, 27, 28, teacher in

See Page 2A



INDUSTRIAL FINANCE—The Board of Directors of the Tyler County Industrial Finance Corporation met last Thursday and Friday to approve issuance of \$4 million in revenue bonds to finance a Hardwood Chipper Plant for E & L Lumber Company. Directors of the TICFC are (shown left to right) Robert Allison, John Coker, John Yearwood, Tom Knapp, Glenn Revere and (not shown) Wyatt Bell.

By Tracy Mason



## Sidewalk Soundoff

This week's Question

"What is the best thing that could happen to you in 1985?"



The best thing that could happen would be a healthy, happy family and prosperity throughout the year.

—Odean Berry  
Walmart Supercenter  
Woodville



Curry back home...  
—Dane B...  
Contractor  
Charleston, South Carolina

# BOOSTER 50th ANNIVERSARY OPINIONS Yours, Theirs, Ours

## House Plants

**By: Ted Brice,**  
The Garden Editor

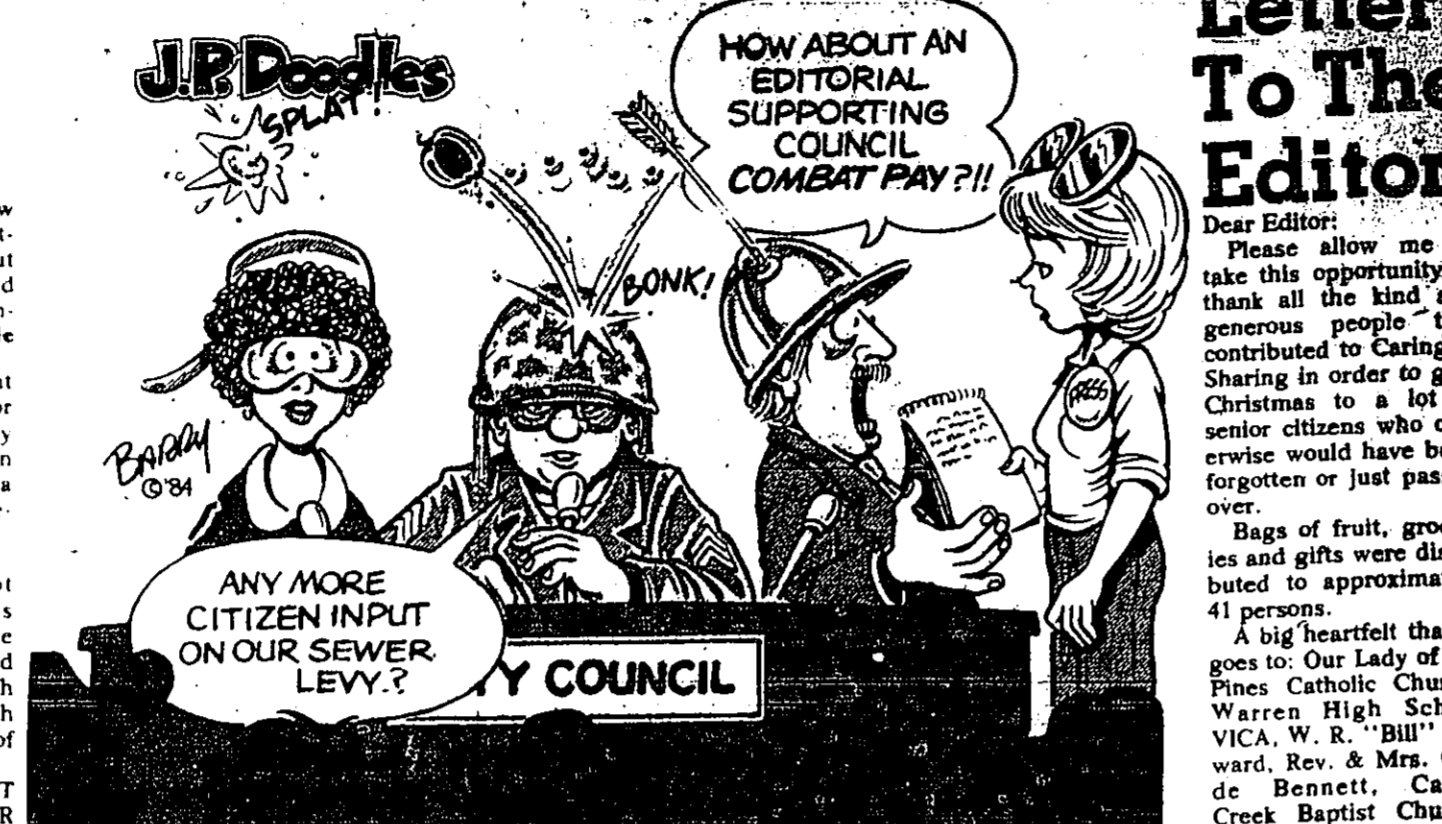
Since we have moved our plants inside to protect them from the winter cold temperature. During the winter it is am devoting this column to house plants, including information on the three most popular ones. Generally speaking, most house plants are killed by too much water.

Another of the more popular house plants is the Sansevieria or Snake Plant as it is better known. Its correct name is Sansevieria trifasciata and it is a member of the Liliaceae family. The Sansevieria is a native of Africa and is a warm-loving plant and should be kept in a sunny or light shaded location.

In no instance should it be kept too wet. Dry summer type air suits it very well. When kept in a cool place, it should be watered even less often than usual. As a pot plant, the Sansevieria may grow to a height of three to four feet.

Remember, do not over water your plants while they are in the house this winter and feed them not only with fertilizer but also with the proper amount of light.

**SO LONG UNTIL NEXT WEEK FROM YOUR GARDEN EDITOR**



## D. C. Band Trip Develops

From Page 1A

The Audit Report for year 1983-84 was presented by Tommy Weaver of Woodville accounting firm of Weaver and Smith. Weaver described the school district as financially solid with suggestions that improvements be made "in control" over varied activity funds in the district and lower collections of property tax.

Discipline management in the school and appointed a text book committee for first through eighth grade Math, Science and Biology and Computer and Data Processing texts.

**Warren**

From Page 1A

Service: August 29, 30, January 20, May 31, teacher workdays; May 25, Baccalaureate; May 27, Graduation Day; May 30, last day of classes.

## Beware Bottle Mouth Teeth

**By Brian Babin, D.D.S.**

When you put your baby to bed with a bottle and baby is much over a year old you're allowing all those new teeth to be bathed in sugars all night long and I know you're not going to get the baby up and brush his or her teeth after he's already asleep. But if you give them a bottle every night and he's over one year old that's what you should do. The moral of this is, "Don't put a one year old to sleep with a bottle."

As soon as your child has teeth in the mouth, start brushing them twice each day, morning and at night before going to bed. This way their teeth are clean all night long.

While a baby is still only 100% pure fruit juice, formula, milk or whatever your family doctor advises. Shame on you if you put your child to sleep at night with a bottle of Koolaid, chocolate milk, coke, or other soft drinks. These are loaded with sugar and will quickly destroy your child's teeth. And yes, even formula, fruit juices and milk can eventually cause tooth decay if continued to be given a child by bottle.

Begin to wean your child away from the bottle with a "sippy cup" by the time they are 9 months old. Have them totally off the bottle and erupced by then and they should be having their teeth brushed.

Remember, if your child is 12 months old or older, start working immediately to wean him or her away from the bottle. It's not an easy job, but one that must be done to preserve your baby's health.

## PERSONAL FAMILY

### Shopping With Diane

What's your New Year's resolution? To lose weight? To quit smoking? To be more punctual? Perhaps the most common resolution being made this way is the resolution not to make a resolution.

Whatever you're striving for, the new year offers a fresh start and Tyler County merchants have many items to help you reach your new goals.

Let's get on.

**IF THE SHOE FITS, WEAR IT**-Feet and cars are alot alike; they come in all sizes, they get us where we want to go, and they don't get much attention until there's a problem.

Both are familiar, but somehow keep their workings mysteriously unfamiliar. Generally, the most profound diagnosis we can pronounce on either is that one is too hot or frigidly too cold.

I don't know much about cars, but the human foot is made up of 26 delicate bones plus an intricate network of muscle tissue, ligaments and tendons.

If your New Year's resolutions included a jogging or fitness program, start off right by dropping by the shoe department at J. B. Best & Co. They carry several lines of athletic shoes and have sizes for men, women and children.

The KAEPA Athletic Shoe designed for action sports. The KAEPA features a patented two-layer split vamp design that will let you independently adjust the lower and upper sections of the shoe. The shoe comes with a brochure explaining optional lacing methods, how to lock the laces and how to tie the proper bow.

In addition to the innovative KAEPA line, J. B. Best carries "Joy", an aerobics shoe by Autry.

If your fitness program includes walking, you might also be interested in the "Soft Spas". They feature all leather uppers and come in both slip-on and lace-up styles. Selected Soft Spas are currently on sale.

**MUSCLE BOUND**-Over the past several years there's been an increasing emphasis on physical fitness. Body building is more popular than ever and these days is attracting more and more participants. In fact, a surprising number of the weaker sex have become body building enthusiasts and are showing in some pretty snappy competition that they aren't the weaker sex at all.

Whether your goal is to tone and tighten what you have or to develop a build like Arnold Schwarzenegger, you'll be interested in the home-gym equipment available through Western Auto.

The DE Supreme Exercise Bench is a versatile piece of equipment which exercises all major muscle groups. The back adjusts to four lifting positions and has a self-locking crossbar. The bench also features adjustable three-position squat racks and a unique leg-lift/leg-curl/rowing attachment. Four vinyl covered foam pads come with the bench.

The DP Supreme is made from 1/4 inch electrostatically-painted tubular steel. Its flat weight capacity is 500 lbs., inclined, 300 lbs.

According to Western Auto's Maxine Carroll, several other pieces of exercise equipment are also available. These include an incline bench, an adjustable bench, a slant bar, barbells and dumbbell sets.

**WORKING OUT**-Fame, wealth, and sexy good looks aside, most of us do have something in common with Jane Fonda. It's the desire to get in shape and stay that way.

If you're been intending to start a fitness program, now's the perfect time. With the new home videos you can work out in the privacy of your own home and set your own pace and schedule.

Sound good? Then stop by Fairway Foods and look through their large selection of fitness tapes in the Home Video Department.

The popular Jane Fonda Workout is there, and so is her advanced program, "The Challenge Jane Kennedy's video is also available, as is a five day workout starring the Solid Gold Dancers from the hit television series.

If you enjoy aerobic dancing, the Aerobic Aerobics tape may be for you. It's touted as the "head to toe workout that's fun!"

You also might like to try Aerobic Self-Defense, a complete workout program for everyone.

According to Fairway's Theresa Tolbert, tapes can be rented for five days for \$3.00, each plus tax.

**Health-tex**  
Infants' & Childrens Wear  
30% - 50% Off

**Girls' Dresses 30% Off**

**Children's Sleepwear 30% Off**

## Belt Receives Certification

After five years experience as a Tax Assessor-Collector, Mr. Belt has been appointed to the position of Tax Assessor-Collector for the Tyler County School District. Mr. Belt has completed the approved three-year course in Advanced Tax Assessor-Collector training at the University of Texas at Dallas. He also completed the approved three-year course in the Board of Tax Professional Property Appraiser training at the University of Texas at Dallas. Mr. Belt is a member of the American Association of Assessing Officers and the Texas Society of Assessors.



SENATOR ROY BLAKE Reports To You

**SENATOR ROY BLAKE Reports To You**

By: [Name]

On Tuesday, January 15, 1985, Senator Roy Blake, R-Tyler, was in town for his first day of his new term in the Texas Senate. He will be serving in the Senate until the end of his term in 1990.

Senator Blake is a member of the Senate's Education and Public Safety Committee. He has been a member of the Senate's Education and Public Safety Committee since 1982.

Senator Blake is a member of the Senate's Education and Public Safety Committee. He has been a member of the Senate's Education and Public Safety Committee since 1982.

**EDITORIAL PAGE**  
THE TYLER COUNTY BOOSTER  
SERVING TYLER COUNTY SINCE 1930

**ADVERTISING DEPARTMENT:**  
Sylvia Cowart, Sales  
HUBERT DEPAULIS, Editor  
Luther Lowery, Sports  
Scholastic Editor  
Jol. Tompkins, Political Reporter  
Mike Sidote, Austin Bureau  
Tracy Mason, Photo Editor

**PRODUCTION DEPARTMENT:**  
Diane Stilton, Composing  
Jackie Brown, Design  
CIRCULATION DEPARTMENT:  
Billie Martin, Director

**County Community Columnists:**  
L.D. Brooks  
Alma Proctor  
Mrs. W.T. Haynes  
Mrs. J. W. Brown  
Mrs. J. W. Brown  
Mrs. J. W. Brown

## JANUARY CLEARANCE

### Save up to 50% on Winter Clothing and Shoes for the entire family!

**Large Selection**  
Men's Long Sleeve Sport Shirts  
**30% & 50% Off**

**Men's Large Selection**  
Sportcoats **25% Off**

**Large Selection**  
Men's & Boys' Jackets **25% Off**

**Famous Name Clearance Sale**  
Junior Misses Full Figure  
**Sportswear 30% & 50% Off**

- Blouses • Pants • Vests
- Skirts • Jackets • Sweaters

**Save Ladies' Fall Dress & Casual Shoes Up To 1/2 Off**

**Clearance Sale Large Group**  
DANSKIN & PLAYTEX  
Bras **1/2 Off**

**Clearance Sale Fall & Winter Dresses 30%-50% Off**

**Ladies' Suede Cuff Boots**  
Reg 28" Sale 1999

**Little Girls' Suede Cuff Boots**  
Reg 21" Sale 1588

**Ladies' Winter Sleep & Lounge Wear**  
Robes, Gowns, PJ's  
**30% Off**

**HANES ANNIVERSARY SALE**

Style No.	Style Description	1 Pair Price	1 Pair Sale
100	Women's long sleeve sweater	4.99	3.49
101	Women's long sleeve sweater	4.99	3.49
102	Women's long sleeve sweater	4.99	3.49
103	Women's long sleeve sweater	4.99	3.49
104	Women's long sleeve sweater	4.99	3.49
105	Women's long sleeve sweater	4.99	3.49
106	Women's long sleeve sweater	4.99	3.49
107	Women's long sleeve sweater	4.99	3.49
108	Women's long sleeve sweater	4.99	3.49
109	Women's long sleeve sweater	4.99	3.49
110	Women's long sleeve sweater	4.99	3.49

**Girls' Dresses 30% Off**

**Toddler To Size 14 Children's Sleepwear 30% Off**

**Happy New Year Tyler County**  
Shop Our Store For Other Unadvertised Specials

**J.B. BEST & CO.**  
Your Complete Family Store On The Square In Woodville Since 1919

Additional Free Parking



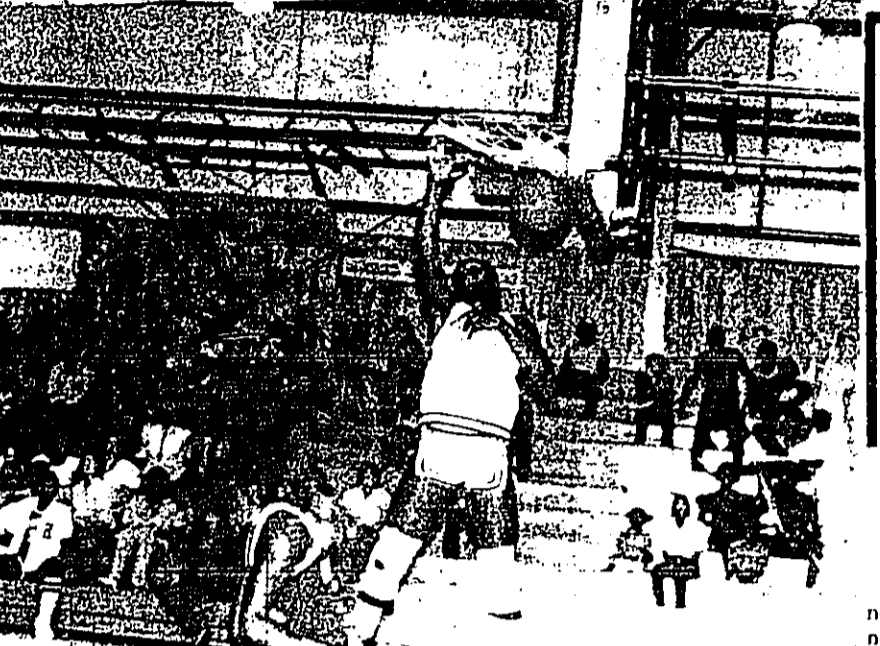
### Woodville Girls Win District Opener

The Woodville girls opened district play at home on Tuesday, December 18th, with a victory over Hemphill. The Lady Eagles probably played their best game of the season as they defeated Hemphill 38 with a very strong fourth quarter. Woodville was behind 11 to 18 at the end of the first quarter. The score at the half was Hemphill 24 and Woodville 21. Woodville outscored them 12 to 10 in the third quarter and was still trailing 16 to 33 at the end of the half. They rebounded and outscored Hemphill 26 points, rebounded very well on both ends of the court and played a very good floor game. Their next game is at Diboll on Friday, January 4th.

### Eagles Lose To Hemphill

The Woodville boys opened district play against Hemphill on Tuesday, December 18th, and were soundly defeated. Woodville dropped behind in the first quarter and were never in the game after that. They did nothing right until the third quarter and then rebounded and outscored Hemphill 26 points, rebounded very well on both ends of the court and played a very good floor game. Their next game is at Diboll on Friday, January 4th.

# SPORTS PAGE



Above: SLAM DUNK—Mark Deamon, #34 of Woodville, makes two points the easy way as he slam dunks one in their loss to Hemphill.

Below: NICE—Mr. H. B. Waddell of Woodville killed this 8 point buck recently near Woodville.

### Lake Area Outdoor Report

#### Hunting, Fishing and Lying

By "Double L" Luther

#### Fishing Report

Fishing is very slow now but it is because not many people are fishing. The weather has been good but a little windy a few days. Joe Glasscock went one day last week and caught 6 bass and a 19 lb. drum. He caught them on worms, jigs and Rattle Traps.

#### Hunting

Don't have much to report but do know that deer and duck hunting is very slow. I guess we need some bad weather to put them to moving again. Phil McClure and Dad killed a few ducks and geese on their lease near Liberty, last week.

### Colmesneil Boys Improving

The Colmesneil Bulldogs are coming along and defeating them 68 to 51. The Bulldogs started fast and led the game all the way. Dewayne Broussard led scoring with 18 points. Henry Boykin made 14 and Kyle Russell had 10.

### Lady Bulldogs Win

The Lady Bulldogs of Colmesneil won two games just before getting out for Christmas. Colmesneil 56, Kirbyville 52. They played Kirbyville at home on Monday the 17th, and defeated them 56 to 52. Colmesneil was leading 13 to 6 at the end of the quarter. Colmesneil scored 21 points and Kirbyville 20 in the second quarter for a 34 to 26 score at the half. Kirbyville scored 14 points to Colmesneil 12 in the 3rd quarter and Kirbyville 20 in the final quarter but Colmesneil held them off for the victory. Colmesneil hit themselves at the free throw line by hitting only 4 of 16. Colmesneil played



Above: SLAM DUNK—Mark Deamon, #34 of Woodville, makes two points the easy way as he slam dunks one in their loss to Hemphill.

Below: NICE—Mr. H. B. Waddell of Woodville killed this 8 point buck recently near Woodville.

### Lady Bulldogs Win

The Lady Bulldogs of Colmesneil won two games just before getting out for Christmas. Colmesneil 56, Kirbyville 52. They played Kirbyville at home on Monday the 17th, and defeated them 56 to 52. Colmesneil was leading 13 to 6 at the end of the quarter. Colmesneil scored 21 points and Kirbyville 20 in the second quarter for a 34 to 26 score at the half. Kirbyville scored 14 points to Colmesneil 12 in the 3rd quarter and Kirbyville 20 in the final quarter but Colmesneil held them off for the victory. Colmesneil hit themselves at the free throw line by hitting only 4 of 16. Colmesneil played

### COLMESNEIL GIRLS TOURNAMENT

Colmesneil High School Jan 3, 4, & 5, 1985

Time	Day	Game	Time	Day	Game
9:30 A.M. <td>Fri. <td>10</td> <td>1:30 P.M. <td>Sat. <td>19</td> </td></td></td>	Fri. <td>10</td> <td>1:30 P.M. <td>Sat. <td>19</td> </td></td>	10	1:30 P.M. <td>Sat. <td>19</td> </td>	Sat. <td>19</td>	19
11:30 A.M. <td>Fri. <td>11</td> <td>3:30 P.M. <td>Sat. <td>20</td> </td></td></td>	Fri. <td>11</td> <td>3:30 P.M. <td>Sat. <td>20</td> </td></td>	11	3:30 P.M. <td>Sat. <td>20</td> </td>	Sat. <td>20</td>	20
1:30 P.M. <td>Fri. <td>12</td> <td>5:30 P.M. <td>Sat. <td>21</td> </td></td></td>	Fri. <td>12</td> <td>5:30 P.M. <td>Sat. <td>21</td> </td></td>	12	5:30 P.M. <td>Sat. <td>21</td> </td>	Sat. <td>21</td>	21
3:30 P.M. <td>Fri. <td>13</td> <td>7:30 P.M. <td>Sat. <td>22</td> </td></td></td>	Fri. <td>13</td> <td>7:30 P.M. <td>Sat. <td>22</td> </td></td>	13	7:30 P.M. <td>Sat. <td>22</td> </td>	Sat. <td>22</td>	22
5:30 P.M. <td>Fri. <td>14</td> <td>9:30 P.M. <td>Sat. <td>23</td> </td></td></td>	Fri. <td>14</td> <td>9:30 P.M. <td>Sat. <td>23</td> </td></td>	14	9:30 P.M. <td>Sat. <td>23</td> </td>	Sat. <td>23</td>	23
7:30 P.M. <td>Fri. <td>15</td> <td>11:30 P.M. <td>Sat. <td>24</td> </td></td></td>	Fri. <td>15</td> <td>11:30 P.M. <td>Sat. <td>24</td> </td></td>	15	11:30 P.M. <td>Sat. <td>24</td> </td>	Sat. <td>24</td>	24
9:30 P.M. <td>Fri. <td>16</td> <td>1:30 A.M. <td>Sun. <td>25</td> </td></td></td>	Fri. <td>16</td> <td>1:30 A.M. <td>Sun. <td>25</td> </td></td>	16	1:30 A.M. <td>Sun. <td>25</td> </td>	Sun. <td>25</td>	25
11:30 P.M. <td>Fri. <td>17</td> <td>3:30 A.M. <td>Sun. <td>26</td> </td></td></td>	Fri. <td>17</td> <td>3:30 A.M. <td>Sun. <td>26</td> </td></td>	17	3:30 A.M. <td>Sun. <td>26</td> </td>	Sun. <td>26</td>	26
1:30 A.M. <td>Sat. <td>18</td> <td>5:30 A.M. <td>Sun. <td>27</td> </td></td></td>	Sat. <td>18</td> <td>5:30 A.M. <td>Sun. <td>27</td> </td></td>	18	5:30 A.M. <td>Sun. <td>27</td> </td>	Sun. <td>27</td>	27
3:30 A.M. <td>Sat. <td>19</td> <td>7:30 A.M. <td>Sun. <td>28</td> </td></td></td>	Sat. <td>19</td> <td>7:30 A.M. <td>Sun. <td>28</td> </td></td>	19	7:30 A.M. <td>Sun. <td>28</td> </td>	Sun. <td>28</td>	28
5:30 A.M. <td>Sat. <td>20</td> <td>9:30 A.M. <td>Sun. <td>29</td> </td></td></td>	Sat. <td>20</td> <td>9:30 A.M. <td>Sun. <td>29</td> </td></td>	20	9:30 A.M. <td>Sun. <td>29</td> </td>	Sun. <td>29</td>	29
7:30 A.M. <td>Sat. <td>21</td> <td>11:30 A.M. <td>Sun. <td>30</td> </td></td></td>	Sat. <td>21</td> <td>11:30 A.M. <td>Sun. <td>30</td> </td></td>	21	11:30 A.M. <td>Sun. <td>30</td> </td>	Sun. <td>30</td>	30
9:30 A.M. <td>Sat. <td>22</td> <td>1:30 P.M. <td>Mon. <td>31</td> </td></td></td>	Sat. <td>22</td> <td>1:30 P.M. <td>Mon. <td>31</td> </td></td>	22	1:30 P.M. <td>Mon. <td>31</td> </td>	Mon. <td>31</td>	31
11:30 A.M. <td>Sat. <td>23</td> <td>3:30 P.M. <td>Mon. <td>32</td> </td></td></td>	Sat. <td>23</td> <td>3:30 P.M. <td>Mon. <td>32</td> </td></td>	23	3:30 P.M. <td>Mon. <td>32</td> </td>	Mon. <td>32</td>	32
1:30 P.M. <td>Sun. <td>24</td> <td>5:30 P.M. <td>Mon. <td>33</td> </td></td></td>	Sun. <td>24</td> <td>5:30 P.M. <td>Mon. <td>33</td> </td></td>	24	5:30 P.M. <td>Mon. <td>33</td> </td>	Mon. <td>33</td>	33
3:30 P.M. <td>Sun. <td>25</td> <td>7:30 P.M. <td>Mon. <td>34</td> </td></td></td>	Sun. <td>25</td> <td>7:30 P.M. <td>Mon. <td>34</td> </td></td>	25	7:30 P.M. <td>Mon. <td>34</td> </td>	Mon. <td>34</td>	34
5:30 P.M. <td>Sun. <td>26</td> <td>9:30 P.M. <td>Mon. <td>35</td> </td></td></td>	Sun. <td>26</td> <td>9:30 P.M. <td>Mon. <td>35</td> </td></td>	26	9:30 P.M. <td>Mon. <td>35</td> </td>	Mon. <td>35</td>	35
7:30 P.M. <td>Sun. <td>27</td> <td>11:30 P.M. <td>Mon. <td>36</td> </td></td></td>	Sun. <td>27</td> <td>11:30 P.M. <td>Mon. <td>36</td> </td></td>	27	11:30 P.M. <td>Mon. <td>36</td> </td>	Mon. <td>36</td>	36
9:30 P.M. <td>Sun. <td>28</td> <td>1:30 A.M. <td>Tue. <td>37</td> </td></td></td>	Sun. <td>28</td> <td>1:30 A.M. <td>Tue. <td>37</td> </td></td>	28	1:30 A.M. <td>Tue. <td>37</td> </td>	Tue. <td>37</td>	37
11:30 P.M. <td>Sun. <td>29</td> <td>3:30 A.M. <td>Tue. <td>38</td> </td></td></td>	Sun. <td>29</td> <td>3:30 A.M. <td>Tue. <td>38</td> </td></td>	29	3:30 A.M. <td>Tue. <td>38</td> </td>	Tue. <td>38</td>	38
1:30 A.M. <td>Mon. <td>30</td> <td>5:30 A.M. <td>Tue. <td>39</td> </td></td></td>	Mon. <td>30</td> <td>5:30 A.M. <td>Tue. <td>39</td> </td></td>	30	5:30 A.M. <td>Tue. <td>39</td> </td>	Tue. <td>39</td>	39
3:30 A.M. <td>Mon. <td>31</td> <td>7:30 A.M. <td>Tue. <td>40</td> </td></td></td>	Mon. <td>31</td> <td>7:30 A.M. <td>Tue. <td>40</td> </td></td>	31	7:30 A.M. <td>Tue. <td>40</td> </td>	Tue. <td>40</td>	40
5:30 A.M. <td>Mon. <td>32</td> <td>9:30 A.M. <td>Tue. <td>41</td> </td></td></td>	Mon. <td>32</td> <td>9:30 A.M. <td>Tue. <td>41</td> </td></td>	32	9:30 A.M. <td>Tue. <td>41</td> </td>	Tue. <td>41</td>	41
7:30 A.M. <td>Mon. <td>33</td> <td>11:30 A.M. <td>Tue. <td>42</td> </td></td></td>	Mon. <td>33</td> <td>11:30 A.M. <td>Tue. <td>42</td> </td></td>	33	11:30 A.M. <td>Tue. <td>42</td> </td>	Tue. <td>42</td>	42
9:30 A.M. <td>Mon. <td>34</td> <td>1:30 P.M. <td>Wed. <td>43</td> </td></td></td>	Mon. <td>34</td> <td>1:30 P.M. <td>Wed. <td>43</td> </td></td>	34	1:30 P.M. <td>Wed. <td>43</td> </td>	Wed. <td>43</td>	43
11:30 A.M. <td>Mon. <td>35</td> <td>3:30 P.M. <td>Wed. <td>44</td> </td></td></td>	Mon. <td>35</td> <td>3:30 P.M. <td>Wed. <td>44</td> </td></td>	35	3:30 P.M. <td>Wed. <td>44</td> </td>	Wed. <td>44</td>	44
1:30 P.M. <td>Tue. <td>36</td> <td>5:30 P.M. <td>Wed. <td>45</td> </td></td></td>	Tue. <td>36</td> <td>5:30 P.M. <td>Wed. <td>45</td> </td></td>	36	5:30 P.M. <td>Wed. <td>45</td> </td>	Wed. <td>45</td>	45
3:30 P.M. <td>Tue. <td>37</td> <td>7:30 P.M. <td>Wed. <td>46</td> </td></td></td>	Tue. <td>37</td> <td>7:30 P.M. <td>Wed. <td>46</td> </td></td>	37	7:30 P.M. <td>Wed. <td>46</td> </td>	Wed. <td>46</td>	46
5:30 P.M. <td>Tue. <td>38</td> <td>9:30 P.M. <td>Wed. <td>47</td> </td></td></td>	Tue. <td>38</td> <td>9:30 P.M. <td>Wed. <td>47</td> </td></td>	38	9:30 P.M. <td>Wed. <td>47</td> </td>	Wed. <td>47</td>	47
7:30 P.M. <td>Tue. <td>39</td> <td>11:30 P.M. <td>Wed. <td>48</td> </td></td></td>	Tue. <td>39</td> <td>11:30 P.M. <td>Wed. <td>48</td> </td></td>	39	11:30 P.M. <td>Wed. <td>48</td> </td>	Wed. <td>48</td>	48
9:30 P.M. <td>Tue. <td>40</td> <td>1:30 A.M. <td>Thu. <td>49</td> </td></td></td>	Tue. <td>40</td> <td>1:30 A.M. <td>Thu. <td>49</td> </td></td>	40	1:30 A.M. <td>Thu. <td>49</td> </td>	Thu. <td>49</td>	49
11:30 P.M. <td>Tue. <td>41</td> <td>3:30 A.M. <td>Thu. <td>50</td> </td></td></td>	Tue. <td>41</td> <td>3:30 A.M. <td>Thu. <td>50</td> </td></td>	41	3:30 A.M. <td>Thu. <td>50</td> </td>	Thu. <td>50</td>	50
1:30 A.M. <td>Wed. <td>42</td> <td>5:30 A.M. <td>Thu. <td>51</td> </td></td></td>	Wed. <td>42</td> <td>5:30 A.M. <td>Thu. <td>51</td> </td></td>	42	5:30 A.M. <td>Thu. <td>51</td> </td>	Thu. <td>51</td>	51
3:30 A.M. <td>Wed. <td>43</td> <td>7:30 A.M. <td>Thu. <td>52</td> </td></td></td>	Wed. <td>43</td> <td>7:30 A.M. <td>Thu. <td>52</td> </td></td>	43	7:30 A.M. <td>Thu. <td>52</td> </td>	Thu. <td>52</td>	52
5:30 A.M. <td>Wed. <td>44</td> <td>9:30 A.M. <td>Thu. <td>53</td> </td></td></td>	Wed. <td>44</td> <td>9:30 A.M. <td>Thu. <td>53</td> </td></td>	44	9:30 A.M. <td>Thu. <td>53</td> </td>	Thu. <td>53</td>	53
7:30 A.M. <td>Wed. <td>45</td> <td>11:30 A.M. <td>Thu. <td>54</td> </td></td></td>	Wed. <td>45</td> <td>11:30 A.M. <td>Thu. <td>54</td> </td></td>	45	11:30 A.M. <td>Thu. <td>54</td> </td>	Thu. <td>54</td>	54
9:30 A.M. <td>Wed. <td>46</td> <td>1:30 P.M. <td>Fri. <td>55</td> </td></td></td>	Wed. <td>46</td> <td>1:30 P.M. <td>Fri. <td>55</td> </td></td>	46	1:30 P.M. <td>Fri. <td>55</td> </td>	Fri. <td>55</td>	55
11:30 A.M. <td>Wed. <td>47</td> <td>3:30 P.M. <td>Fri. <td>56</td> </td></td></td>	Wed. <td>47</td> <td>3:30 P.M. <td>Fri. <td>56</td> </td></td>	47	3:30 P.M. <td>Fri. <td>56</td> </td>	Fri. <td>56</td>	56
1:30 P.M. <td>Thu. <td>48</td> <td>5:30 P.M. <td>Fri. <td>57</td> </td></td></td>	Thu. <td>48</td> <td>5:30 P.M. <td>Fri. <td>57</td> </td></td>	48	5:30 P.M. <td>Fri. <td>57</td> </td>	Fri. <td>57</td>	57
3:30 P.M. <td>Thu. <td>49</td> <td>7:30 P.M. <td>Fri. <td>58</td> </td></td></td>	Thu. <td>49</td> <td>7:30 P.M. <td>Fri. <td>58</td> </td></td>	49	7:30 P.M. <td>Fri. <td>58</td> </td>	Fri. <td>58</td>	58
5:30 P.M. <td>Thu. <td>50</td> <td>9:30 P.M. <td>Fri. <td>59</td> </td></td></td>	Thu. <td>50</td> <td>9:30 P.M. <td>Fri. <td>59</td> </td></td>	50	9:30 P.M. <td>Fri. <td>59</td> </td>	Fri. <td>59</td>	59
7:30 P.M. <td>Thu. <td>51</td> <td>11:30 P.M. <td>Fri. <td>60</td> </td></td></td>	Thu. <td>51</td> <td>11:30 P.M. <td>Fri. <td>60</td> </td></td>	51	11:30 P.M. <td>Fri. <td>60</td> </td>	Fri. <td>60</td>	60
9:30 P.M. <td>Thu. <td>52</td> <td>1:30 A.M. <td>Sat. <td>61</td> </td></td></td>	Thu. <td>52</td> <td>1:30 A.M. <td>Sat. <td>61</td> </td></td>	52	1:30 A.M. <td>Sat. <td>61</td> </td>	Sat. <td>61</td>	61
11:30 P.M. <td>Thu. <td>53</td> <td>3:30 A.M. <td>Sat. <td>62</td> </td></td></td>	Thu. <td>53</td> <td>3:30 A.M. <td>Sat. <td>62</td> </td></td>	53	3:30 A.M. <td>Sat. <td>62</td> </td>	Sat. <td>62</td>	62
1:30 A.M. <td>Fri. <td>54</td> <td>5:30 A.M. <td>Sat. <td>63</td> </td></td></td>	Fri. <td>54</td> <td>5:30 A.M. <td>Sat. <td>63</td> </td></td>	54	5:30 A.M. <td>Sat. <td>63</td> </td>	Sat. <td>63</td>	63
3:30 A.M. <td>Fri. <td>55</td> <td>7:30 A.M. <td>Sat. <td>64</td> </td></td></td>	Fri. <td>55</td> <td>7:30 A.M. <td>Sat. <td>64</td> </td></td>	55	7:30 A.M. <td>Sat. <td>64</td> </td>	Sat. <td>64</td>	64
5:30 A.M. <td>Fri. <td>56</td> <td>9:30 A.M. <td>Sat. <td>65</td> </td></td></td>	Fri. <td>56</td> <td>9:30 A.M. <td>Sat. <td>65</td> </td></td>	56	9:30 A.M. <td>Sat. <td>65</td> </td>	Sat. <td>65</td>	65
7:30 A.M. <td>Fri. <td>57</td> <td>11:30 A.M. <td>Sat. <td>66</td> </td></td></td>	Fri. <td>57</td> <td>11:30 A.M. <td>Sat. <td>66</td> </td></td>	57	11:30 A.M. <td>Sat. <td>66</td> </td>	Sat. <td>66</td>	66
9:30 A.M. <td>Fri. <td>58</td> <td>1:30 P.M. <td>Sun. <td>67</td> </td></td></td>	Fri. <td>58</td> <td>1:30 P.M. <td>Sun. <td>67</td> </td></td>	58	1:30 P.M. <td>Sun. <td>67</td> </td>	Sun. <td>67</td>	67
11:30 A.M. <td>Fri. <td>59</td> <td>3:30 P.M. <td>Sun. <td>68</td> </td></td></td>	Fri. <td>59</td> <td>3:30 P.M. <td>Sun. <td>68</td> </td></td>	59	3:30 P.M. <td>Sun. <td>68</td> </td>	Sun. <td>68</td>	68
1:30 P.M. <td>Sat. <td>60</td> <td>5:30 P.M. <td>Sun. <td>69</td> </td></td></td>	Sat. <td>60</td> <td>5:30 P.M. <td>Sun. <td>69</td> </td></td>	60	5:30 P.M. <td>Sun. <td>69</td> </td>	Sun. <td>69</td>	69
3:30 P.M. <td>Sat. <td>61</td> <td>7:30 P.M. <td>Sun. <td>70</td> </td></td></td>	Sat. <td>61</td> <td>7:30 P.M. <td>Sun. <td>70</td> </td></td>	61	7:30 P.M. <td>Sun. <td>70</td> </td>	Sun. <td>70</td>	70
5:30 P.M. <td>Sat. <td>62</td> <td>9:30 P.M. <td>Sun. <td>71</td> </td></td></td>	Sat. <td>62</td> <td>9:30 P.M. <td>Sun. <td>71</td> </td></td>	62	9:30 P.M. <td>Sun. <td>71</td> </td>	Sun. <td>71</td>	71
7:30 P.M. <td>Sat. <td>63</td> <td>11:30 P.M. <td>Sun. <td>72</td> </td></td></td>	Sat. <td>63</td> <td>11:30 P.M. <td>Sun. <td>72</td> </td></td>	63	11:30 P.M. <td>Sun. <td>72</td> </td>	Sun. <td>72</td>	72
9:30 P.M. <td>Sat. <td>64</td> <td>1:30 A.M. <td>Mon. <td>73</td> </td></td></td>	Sat. <td>64</td> <td>1:30 A.M. <td>Mon. <td>73</td> </td></td>	64	1:30 A.M. <td>Mon. <td>73</td> </td>	Mon. <td>73</td>	73
11:30 P.M. <td>Sat. <td>65</td> <td>3:30 A.M. <td>Mon. <td>74</td> </td></td></td>	Sat. <td>65</td> <td>3:30 A.M. <td>Mon. <td>74</td> </td></td>	65	3:30 A.M. <td>Mon. <td>74</td> </td>	Mon. <td>74</td>	74
1:30 A.M. <td>Sun. <td>66</td> <td>5:30 A.M. <td>Mon. <td>75</td> </td></td></td>	Sun. <td>66</td> <td>5:30 A.M. <td>Mon. <td>75</td> </td></td>	66	5:30 A.M. <td>Mon. <td>75</td> </td>	Mon. <td>75</td>	75
3:30 A.M. <td>Sun. <td>67</td> <td>7:30 A.M. <td>Mon. <td>76</td> </td></td></td>	Sun. <td>67</td> <td>7:30 A.M. <td>Mon. <td>76</td> </td></td>	67	7:30 A.M. <td>Mon. <td>76</td> </td>	Mon. <td>76</td>	76
5:30 A.M. <td>Sun. <td>68</td> <td>9:30 A.M. <td>Mon. <td>77</td> </td></td></td>	Sun. <td>68</td> <td>9:30 A.M. <td>Mon. <td>77</td> </td></td>	68	9:30 A.M. <td>Mon. <td>77</td> </td>	Mon. <td>77</td>	77
7:30 A.M. <td>Sun. <td>69</td> <td>11:30 A.M. <td>Mon. <td>78</td> </td></td></td>	Sun. <td>69</td> <td>11:30 A.M. <td>Mon. <td>78</td> </td></td>	69	11:30 A.M. <td>Mon. <td>78</td> </td>	Mon. <td>78</td>	78
9:30 A.M. <td>Sun. <td>70</td> <td>1:30 P.M. <td>Tue. <td>79</td> </td></td></td>	Sun. <td>70</td> <td>1:30 P.M. <td>Tue. <td>79</td> </td></td>	70	1:30 P.M. <td>Tue. <td>79</td> </td>	Tue. <td>79</td>	79
11:30 A.M. <td>Sun. <td>71</td> <td>3:30 P.M. <td>Tue. <td>80</td> </td></td></td>	Sun. <td>71</td> <td>3:30 P.M. <td>Tue. <td>80</td> </td></td>	71	3:30 P.M. <td>Tue. <td>80</td> </td>	Tue. <td>80</td>	80
1:30 P.M. <td>Mon. <td>72</td> <td>5:30 P.M. <td>Tue. <td>81</td> </td></td></td>	Mon. <td>72</td> <td>5:30 P.M. <td>Tue. <td>81</td> </td></td>	72	5:30 P.M. <td>Tue. <td>81</td> </td>	Tue. <td>81</td>	81
3:30 P.M. <td>Mon. <td>73</td> <td>7:30 P.M. <td>Tue. <td>82</td> </td></td></td>	Mon. <td>73</td> <td>7:30 P.M. <td>Tue. <td>82</td> </td></td>	73	7:30 P.M. <td>Tue. <td>82</td> </td>	Tue. <td>82</td>	82
5:30 P.M. <td>Mon. <td>74</td> <td>9:30 P.M. <td>Tue. <td>83</td> </td></td></td>	Mon. <td>74</td> <td>9:30 P.M. <td>Tue. <td>83</td> </td></td>	74	9:30 P.M. <td>Tue. <td>83</td> </td>	Tue. <td>83</td>	83
7:30 P.M. <td>Mon. <td>75</td> <td>11:30 P.M. <td>Tue. <td>84</td> </td></td></td>	Mon. <td>75</td> <td>11:30 P.M. <td>Tue. <td>84</td> </td></td>	75	11:30 P.M. <td>Tue. <td>84</td> </td>	Tue. <td>84</td>	84
9:30 P.M. <td>Mon. <td>76</td> <td>1:30 A.M. <td>Wed. <td>85</td> </td></td></td>	Mon. <td>76</td> <td>1:30 A.M. <td>Wed. <td>85</td> </td></td>	76	1:30 A.M. <td>Wed. <td>85</td> </td>	Wed. <td>85</td>	85
11:30 P.M. <td>Mon. <td>77</td> <td>3:30 A.M. <td>Wed. <td>86</td> </td></td></td>	Mon. <td>77</td> <td>3:30 A.M. <td>Wed. <td>86</td> </td></td>	77	3:30 A.M. <td>Wed. <td>86</td> </td>	Wed. <td>86</td>	86
1:30 A.M. <td>Tue. <td>78</td> <td>5:30 A.M. <td>Wed. <td>87</td> </td></td></td>	Tue. <td>78</td> <td>5:30 A.M. <td>Wed. <td>87</td> </td></td>	78	5:30 A.M. <td>Wed. <td>87</td> </td>	Wed. <td>87</td>	87
3:30 A.M. <td>Tue. <td>79</td> <td>7:30 A.M. <td>Wed. <td>88</td> </td></td></td>	Tue. <td>79</td> <td>7:30 A.M. <td>Wed. <td>88</td> </td></td>	79	7:30 A.M. <td>Wed. <td>88</td> </td>	Wed. <td>88</td>	88
5:30 A.M. <td>Tue. <td>80</td> <td>9:30 A.M. <td>Wed. <td>89</td> </td></td></td>	Tue. <td>80</td> <td>9:30 A.M. <td>Wed. <td>89</td> </td></td>	80	9:30 A.M. <td>Wed. <td>89</td> </td>	Wed. <td>89</td>	89
7:30 A.M. <td>Tue. <td>81</td> <td>11:30 A.M. <td>Wed. <td>90</td> </td></td></td>	Tue. <td>81</td> <td>11:30 A.M. <td>Wed. <td>90</td> </td></td>	81	11:30 A.M. <td>Wed. <td>90</td> </td>	Wed. <td>90</td>	90
9:30 A.M. <td>Tue. <td>82</td> <td>1:30 P.M. <td>Thu. <td>91</td> </td></td></td>	Tue. <td>82</td> <td>1:30 P.M. <td>Thu. <td>91</td> </td></td>	82	1:30 P.M. <td>Thu. <td>91</td> </td>	Thu. <td>91</td>	91
11:30 A.M. <td>Tue. <td>83</td> <td>3:30 P.M. <td>Thu. <td>92</td> </td></td></td>	Tue. <td>83</td> <td>3:30 P.M. <td>Thu. <td>92</td> </td></td>	83	3:30 P.M. <td>Thu. <td>92</td> </td>	Thu. <td>92</td>	92
1:30 P.M. <td>Wed. <td>84</td> <td>5:30 P.M. <td>Thu. <td>93</td> </td></td></td>	Wed. <td>84</td> <td>5:30 P.M. <td>Thu. <td>93</td> </td></td>	84	5:30 P.M. <td>Thu. <td>93</td> </td>	Thu. <td>93</td>	93
3:30 P.M. <td>Wed. <td>85</td> <td>7:30 P.M. <td>Thu. <td>94</td> </td></td></td>	Wed. <td>85</td> <td>7:30 P.M. <td>Thu. <td>94</td> </td></td>	85	7:30 P.M. <td>Thu. <td>94</td> </td>	Thu. <td>94</td>	94
5:30 P.M. <td>Wed. <td>86</td> <td>9:30 P.M. <td>Thu. <td>95</td> </td></td></td>	Wed. <td>86</td> <td>9:30 P.M. <td>Thu. <td>95</td> </td></td>	86	9:30 P.M. <td>Thu. <td>95</td> </td>	Thu. <td>95</td>	95
7:30 P.M. <td>Wed. <td>87</td> <td>11:30 P.M. <td>Thu. <td>96</td> </td></td></td>	Wed. <td>87</td> <td>11:30 P.M. <td>Thu. <td>96</td> </td></td>	87	11:30 P.M. <td>Thu. <td>96</td> </td>	Thu. <td>96</td>	96
9:30 P.M. <td>Wed. <td>88</td> <td>1:30 A.M. <td>Fri. <td>97</td> </td></td></td>	Wed. <td>88</td> <td>1:30 A.M. <td>Fri. <td>97</td> </td></td>	88	1:30 A.M. <td>Fri. <td>97</td> </td>	Fri. <td>97</td>	97
11:30 P.M. <td>Wed. <td>89</td> <td>3:30 A.M. <td>Fri. <td>98</td> </td></td></td>	Wed. <td>89</td> <td>3:30 A.M. <td>Fri. <td>98</td> </td></td>	89	3:30 A.M. <td>Fri. <td>98</td> </td>	Fri. <td>98</td>	98
1:30 A.M. <td>Thu. <td>90</td> <td>5:30 A.M. <td>Fri. <td>99</td> </td></td></td>	Thu. <td>90</td> <td>5:30 A.M. <td>Fri. <td>99</td> </td></td>	90	5:30 A.M. <td>Fri. <td>99</td> </td>	Fri. <td>99</td>	99
3:30 A.M. <td>Thu. <td>91</td> <td>7:30 A.M. <td>Fri. <td>100</td> </td></td></td>	Thu. <td>91</td> <td>7:30 A.M. <td>Fri. <td>100</td> </td></td>	91	7:30 A.M. <td>Fri. <td>100</td> </td>	Fri. <td>100</td>	100

TP & WD Year-End Review

The weather hit the big and possession, state's wildlife and fish limits on redfish and trery resources a vicious one by half and increases one-two punch during ing minimum length limits 1984, but Texas Parks and Wildlife Department officials believe from 12 to 14 inches. The year was a banner. These emergency re- one for the agency's various programs. Record low temperatures at the turn of the year followed by a ze damage was just as worsening of drought conditions by summer. This combined to reduce pop- ulations of both fish and as well as quail as indicated in many areas. Along the coast, the freeze was fatal to thou- sands of game fish trapped in the shallow bays and waters, including an estimated 90,000 redfish and 507,000 spotted sea- trout. This prompted the Parks and Wildlife Commission to issue regulations to reduce the

MAIL CALL—Members of Mrs. Martha Gregory and Pam Marietas Enrichment Class wrote, collected props and uniforms for an eight act Christmas Program. Shown above are 5 overseas soldiers receiving their mail at Christmas time.

### School Menu

Januarys 2, 4, 1985

MONDAY	Orange Applesauce Hot Buttered Roll Milk FRIDAY	Corn Bread Milk FRIDAY
TUESDAY	Milk Hamburger Lettuce-Tomato-Pickles Macaroni w/ Cheese Pinto Beans Banana Pudding Milk	
WEDNESDAY	Buttered Corn Turnips w/ Greens Peanut Butter Cookie Corn Bread Milk FRIDAY	
THURSDAY	Fish w/ Catsup Macaroni w/ Cheese Pinto Beans Banana Pudding Milk	

### School Menu

Januarys 11, 1985

MONDAY	Jello w/ Fruit Ham & Cheese Sandwich Milk	THURSDAY	Beef-Brisket Rice Spinach Salad w/ Dressing Cherry Cobbler Corn Bread Milk FRIDAY
TUESDAY	French Fries w/ Catsup Lettuce-Tomato-Pickles Chocolate Brownie Milk FRIDAY	FRIDAY	Pizza Burger Green Salad w/ Dressing Pinto Beans Banana Pudding Milk
WEDNESDAY	Buttered Corn Turnips w/ Greens Peanut Butter Cookie Corn Bread Milk FRIDAY		

## BEST FOOD BUYS IN TOWN

SPECIALS ARE GOOD FOR SEVEN DAYS

Januarys 2nd thru 9th, 1985

Small Pork Knobs	.69 lb
Korin King Boneless Ham	\$1.99 lb
Decker Sliced Bologna	1.79 lb
Hillshire Farm Smoked Sausage	2.49 lb
Wilson Loose Wieners	.99 lb
Pan Sausage	2.19 lb
Heavy Beef Brisket	1.29 lb
Small Pork Chops	1.89 lb
Fnd Cut Pork Ribs	1.59 lb
Hornell Sliced Sausage	1.99 lb
Extra Lean Ground Chuck	1.69 lb
Boneless Chuck Steak	2.39 lb
Boneless Chuck Roast	1.99 lb
Wilson Baked Ham	2.49 lb
Lady Borden Ice Cream	2.59
All 2 Liter Coke products plus tax	1.09
Coke 6 pkg. can Diet & Caffeine Free	1.79
All 2 Liter Dr. Pepper products plus tax	1.09
Santa Maria Milk, gal	2.39
Trophy Cup Milk, gal	2.39
Grade A Eggs, doz. large	.79
Potatoes, 89 bag	1.69
Lettuce, head	.59
Celery	.89

Try our Baked Potatoes & Shisk Kabobs

We gladly accept Texaco, Visa, MasterCard, American Express & Food Stamps.

## Grammer's Grocery

W. Blvd  
Woodville  
283-2520

## UPCLASSIFIED

Deadline: Monday 5 pm Call 283-2569

**Jim Mahan**  
Plumbing, Lighting & Bath Shop  
3 Rooms of Plumbing, Lighting & Bath Fixtures  
Pamela Sticks Available Here!! 283-2119  
105 E. Wheat (Across from Jarrots)

**For Sale**  
Studio "Blaho" used. 12' and 6' x 10' Utility Buildings. All types of odd lumber sizes. 283-7034 after 5 p.m. Located at Hwy 69 and US 287.

**FOR SALE: USED LUMBER:** 2 x's, 1 x's, Doors, Windows, 8' x 12' and 6' x 10' Utility Buildings. All types of odd lumber sizes. 283-7034 after 5 p.m. Located at Hwy 69 and US 287.

**FOR SALE: IS IT TRUE**  
You can buy jeans for \$44 through the U.S. Government? Get the facts today! Call 1-312-742-142 Ext. 8375.

**FOR SALE: Motor-cycle**  
1979 Honda CB 750 F Supersport with 750 F Fairing, Vetter super sound w/CD AM/FM Stereo cassette. 2 Custom smoked wind shields for Fairing, Lugg, Rack, Sissy bar, Case guards, Driving lights & fog lights, Diary Queen #2, Hwy 69 So. Woodville, Texas or Call 283-2509, ask for Don. \$1800.00

**FOR SALE: USED LUMBER:** 2 x's, 1 x's, Doors, Windows, 8' x 12' and 6' x 10' Utility Buildings. All types of odd lumber sizes. 283-7034 after 5 p.m. Located at Hwy 69 and US 287.

**FOR SALE: Motor-cycle**  
1979 Honda CB 750 F Supersport with 750 F Fairing, Vetter super sound w/CD AM/FM Stereo cassette. 2 Custom smoked wind shields for Fairing, Lugg, Rack, Sissy bar, Case guards, Driving lights & fog lights, Diary Queen #2, Hwy 69 So. Woodville, Texas or Call 283-2509, ask for Don. \$1800.00

## Advertise

### JUST THINKING

We are thinking about the "nots" that cannot be untied in the world of God. Last week we learned that one is not saved by faith only and salvation is not of man's plan but God's.

"Not everyone that saith unto me, Lord, Lord, shall enter into the kingdom of heaven; but he that doeth the will of my Father which is in heaven" (Matthew 7:21).

This "not" refutes the contention that everyone who says "Lord, Lord," will be saved. Man must do more than acknowledge Christ's Lordship; must do more than believe; must be more than just religious; he must do the Father's will (Hebrews 5:9).

"For we walk by faith, not by sight" (II Corinthians 5:7). Many claim they have seen miraculous evidences to prove their relationship to the Lord, but this "not" teaches otherwise. The religion of Christ is a religion of faith and faith comes from the word of God (John 20:30-31; Romans 10:17) "Buy the truth and sell it not" (Proverbs 23:23).

Truth is a precious soul-saving commodity (John 8:12; Peter 1:22). Under no circumstances are we permitted to sell it—not for business, diplomacy, popularity, or peace in the family. Put a "not" for sale!

"Aid be not conformed to this world" (Romans 12:2). This "not" rebukes worldliness in the lives of Christians. The popularity of it—"Everybody else is doing it"—has no power to untie this "not" in the scriptures. Also I John 2:15-17.

"But he answered and said, Verily I say unto you, I know you not" (Matthew 25:12). This "not" makes the passage forever read that Christ will not know the ones at the judgement who fails to obey him. Have you?

You are invited to the church of Christ. 15 miles east of Woodville on 190. You may call 283-7275 if you need a way.

**NEED STANLEY or WATKINS PRODUCTS?**  
Call JACKIE COWART  
At 283-5699 after 5:00 p.m.

**WILL PICK UP YOUR CANS—On shares.**  
Call 283-5099

**PLEASE LET ME WORK!** Call, write or visit me. Let me work at your yard, James C. Henry, 1413 Bluetonnet Woodville, Texas, 283-7841.

**WANT TO BUY:** Pine, hardwood, saw timber and pulpwood. Call collect 498-2189.

**TEXAS REFINERY CORP.** needs mature person now in Woodville area. Regardless of experience, write A. D. Sears, "Box 711," Fort Worth, Texas, 76101.

**PRECISION HOMES, INC.**  
NACOGDOCHES Come By & Register For a Free Mobile Home

**FOR SALE:** 4 acres wooded hilltop—electric city and telephone on Seneca Road—\$8,000.00 cash or trade 713-941-4272 or 713-946-6303 Houston.

## KNAPP FORD SALES

104 Pina Street Woodville 283-2526

1984 Lincoln Town Car 4 door, 302-V8; Automatic overdrive, Tilt, Cruise, Air cond., Power seats and windows, Power door locks, AMFM stereo, and Wire wheel covers. \$15,495.00

1984 Mercury Cougar V-8, Air cond., Automatic, Power steering & brakes, Tilt, Cruise, Power Seats, Windows & door locks, AMFM cassette. Still under Factory Warranty #773. \$10,995.99

1984 Ford LTD 4 dr., Automatic, Power steering, Power brakes, AMFM stereo and more. This car was purchased from Ford Motor Co. only 5600 miles with Full Factory Warranty Margus 4 dr., Air cond., Automatic, Power steering and brakes, Tilt, Cruise, and AMFM stereo #79. \$8,950.00

1979 Lincoln Town Car 4 dr., Air, Auto., Power, Leather interior, Tilt, Cruise; Power windows, seats & door locks, AMFM stereo & more. \$6,450.00

1981 Oldsmobile Omega 4 dr., Air conditioning, Power steering, Automatic, Power brakes & tilt steering. \$4,500.00

1979 Buick LeSabre V-8, Air, Autofaster; Power steering & brakes, Tilt, Cruise, AM FM stereo & more #78. \$4,500.00

1981 Mercury Cougar V-8, Air cond., Automatic, Power steering and brakes, Tilt, Cruise, and AMFM stereo #79. \$8,950.00

1984 Chevy 2.1L V6, Air cond., Automatic, Power steering & brakes, Tilt, Cruise, and AMFM stereo #79. \$8,950.00

1984 Chevy 2.1L V6, Air cond., Automatic, Power steering & brakes, Tilt, Cruise, and AMFM stereo #79. \$8,950.00

1984 Chevy 2.1L V6, Air cond., Automatic, Power steering & brakes, Tilt, Cruise, and AMFM stereo #79. \$8,950.00

**RENTALS**

**FOR RENT:** Woodville Mini-Storage. Four sizes available in new office building at \$20 per month. Hwy 69 South (Beaumont Hwy), 283-5552. Or 283-3554.

**FOR RENT:** 2 bedroom, 1 bath, Air conditioned. Apartments located in Chester. \$200/month plus initial deposit. Contact Don or Terry 969-2231 or 283-2023.

**FOR LEASE:** Office space (768 sq. ft.) available in new office building 920 North Magnolia Street, Woodville, Tex. Call 283-2242 or 283-3555.

**HOUSE FOR RENT:** 10 miles East of Warren (\$450), plus deposit, 4 br, 2 1/2 bath, central heat and air conditioning, call 283-2920.

**FOR RENT:** 14 room, 2 bedroom mobile home in South No. Park. Available for \$250.00 month. Call 283-2920.

## The Tyler County BOOSTER CLASSIFIED ADS GET RESULTS

**PUBLIC NOTICE**  
Sealed proposals for constructing 128.336 miles of Seal Coat on various limits in District 10. Bids to be received at the office of Frank B. James, Resident Engineer, Texas State Highway Department, Austin, Texas, until 9:00 a.m. January 9, 1985, and then publicly opened and read.

Plans and specifications including minimum wage rates as provided by law are available for inspection at the office of Frank B. James, Resident Engineer, Texas State Highway Department, Austin, Texas, until 9:00 a.m. January 18, 1985 from 10:00 a.m. to 5:00 p.m. at Chester Lion's Club in Chester, Texas.

The revised forms have not arrived from the Texas Department of Human Resources, therefore the 1985 certification will not be conducted at this time. The books will be issued exclusively to residents of Tyler County.

## NOW HIRING PART TIME REPORTER/ PHOTOGRAPHER

**Experience Preferred But Not Necessary**

**CALL 283-2569**

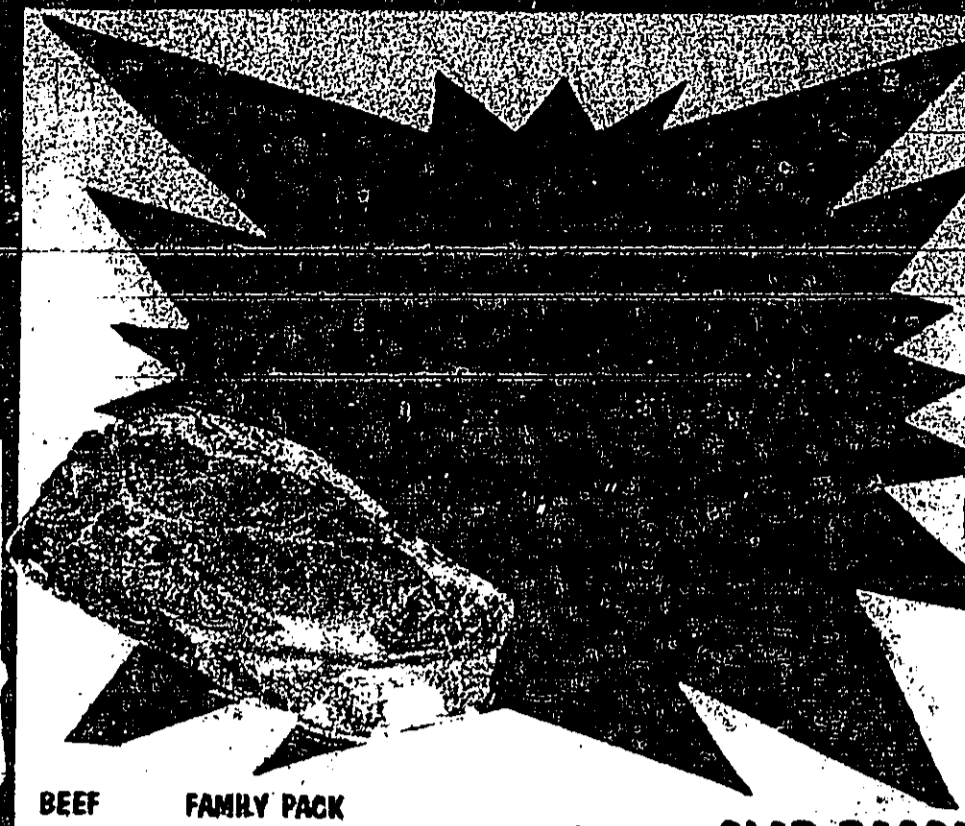


**BEEF SPARE RIBS**  
IDEAL FOR COOK OUT  
LB **79**

**PORK SPARE RIBS**  
MEDIUM SIZE  
LB **119**

**BEEF CUTLETS**  
LB **199**

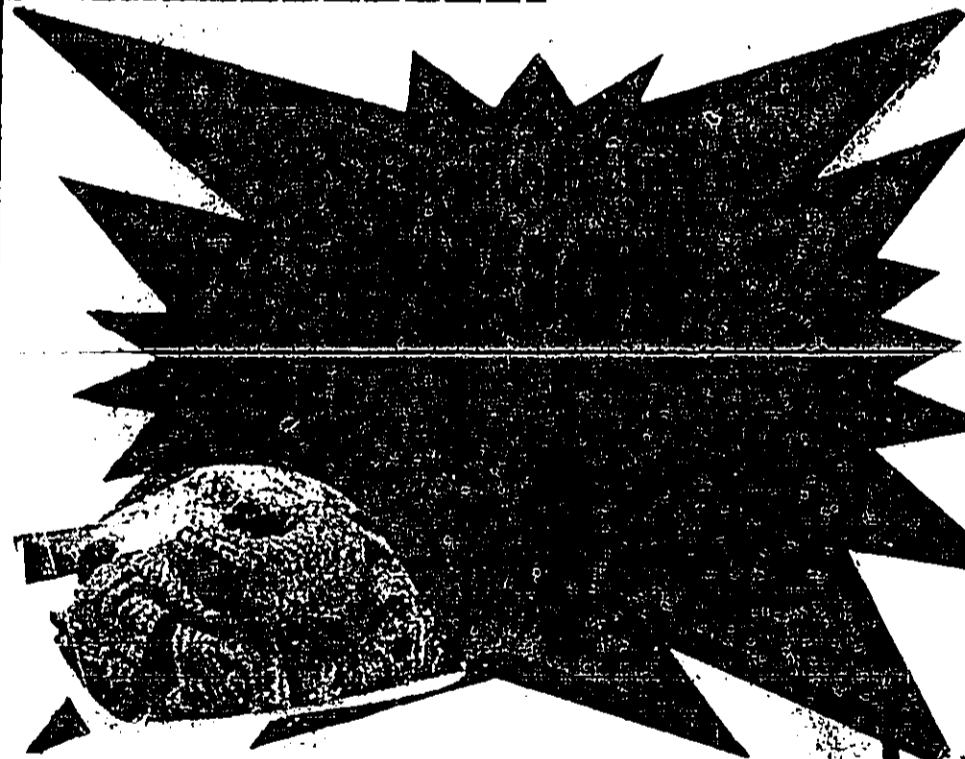
**KRECK PARTY PUB WEINERS**  
12 OZ  
**69**



- BEEF FAMILY PACK**
- ROUND STEAK LB \$189
  - BEEF BONELESS RUMP ROAST LB \$209
  - ENGLISH CUT ROAST LB \$149
  - BEEF BONELESS SAVOY STEAK LB \$169
  - BEEF BONELESS MOCK TENDERS ENDS & PIECES LB \$179
  - BACON 3 LB BOX \$229

**SENIOR CITIZEN DISCOUNT**  
Wednesday is Senior Citizen 5% Discount Shopping Day... If you are 62 years of age or older, you are eligible for a 5% discount on your grocery purchase every Wednesday on your grocery purchase every Wednesday. WE RESERVE THE RIGHT TO LIMIT QUANTITIES.

**CASH REGISTER RECEIPTS**  
WE WILL PAY 1% OF THE TOTAL TO ANY CHURCH, SCOUT, LITTLE LEAGUE OR CHARITABLE ORGANIZATION. START SAVING TODAY. JUST ANOTHER WAY OF BEING A PART OF A FINE COMMUNITY.

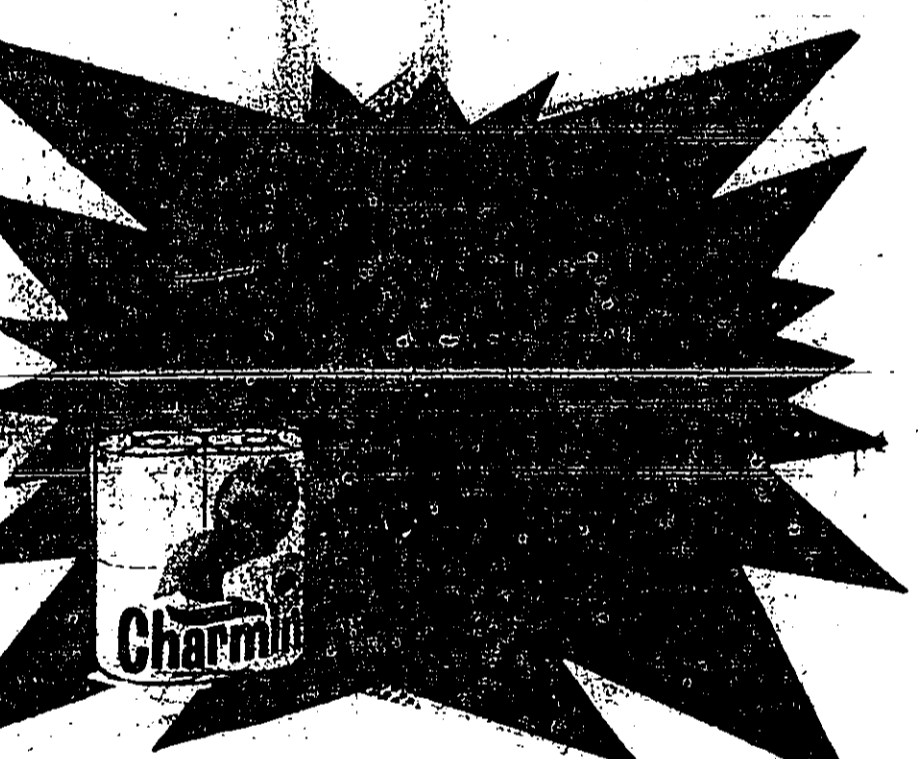
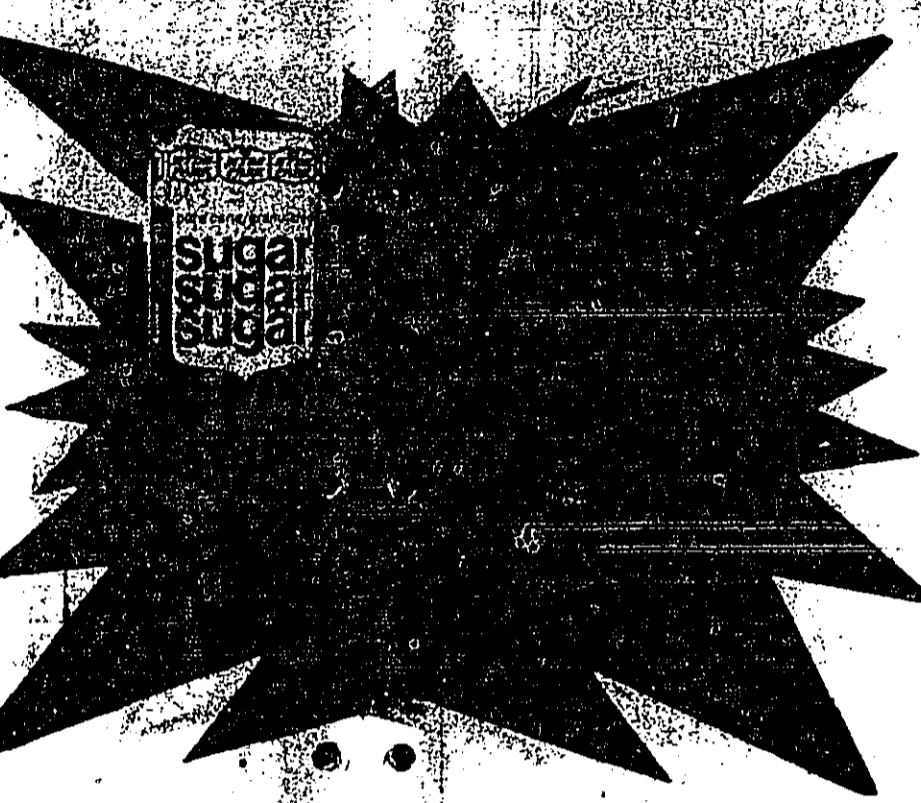


**BEEF BONELESS CHUCK STEAK**  
LB **169**

**ATTENTION SHOPPERS**  
PLEASE REDEEM YOUR STAMP COUPONS FOR THE POTS OR THE CORNING WARE ENDING REDEMPTION DATE JANUARY 8, 1985

**QUALITY SAVINGS**  
PRICES GOOD JAN 2-5, 1985  
OPEN Mon-Thurs 5am-8pm  
Sat 5am-8pm  
Sun 7am-7pm  
New Sunday Hours

**OUR WAY IS YOUR WAY**  
*Fairway*  
OF FOODS



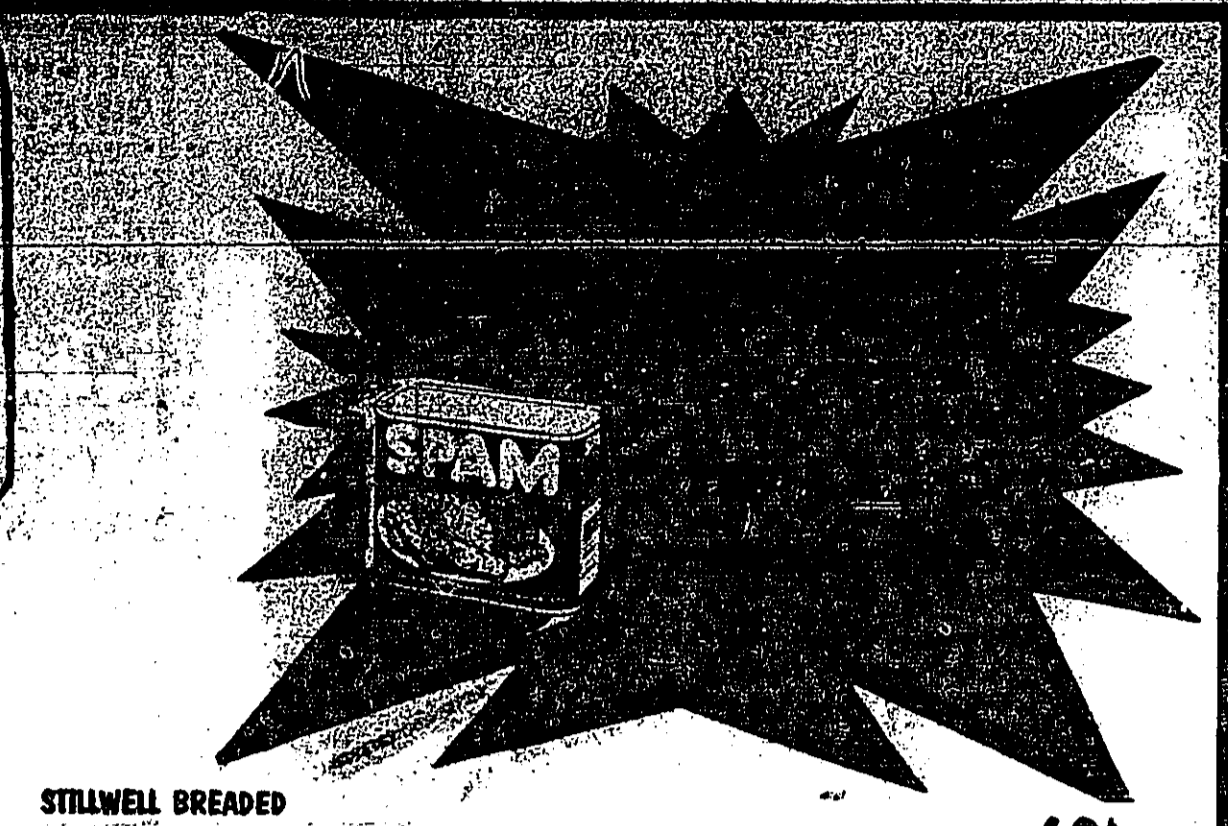
- FROZEN P & D SHRIMP**  
1 LB BAG \$299
- STEAK HOUSE MESQUITE CHARCOAL**  
10 LB \$199

- MRS TUCKERS PLACTIS TUB SHORTENING** 8 LB \$599
- LUZIANNE TEA BAGS** 48 CT \$169
- BOLD 3 DETERGENT** 49 OZ \$249

**FRUITS AND VEGETABLES**  
FRESH CALIFORNIA BROCCOLI 99¢ BUNCH

**BELL PEPPER & CUCUMBERS** 5/\$100

- WAVED RUTABAGAS** 39¢ LB
- BAKING ROSETT POTATOES** 39¢



- STILLWELL BREADED OKRA** 12 OZ 69¢
- AUNT JEMIMA YELLOW CORN MEAL** 5 LB 99¢
- ROSEDALE CAN CORN** 16 OZ 2/99¢
- NABISCO PREMIUM CRACKERS** BOX \$119
- WOLF BRAND PLAIN CHILI** 19 OZ \$119
- SHEDDS COUNTRY CROCK** 24 OZ \$129
- ORE IDA FRIES** 32 OZ \$139
- BORDEN YOGURTS** 8 OZ \$119
- MORRISON CORN KITS** 6 OZ 4/\$100
- KRAFT LIGHT MAYONNAISE** QUART \$199
- RAINBOW HONEY BREAD** LOAF 89¢

**MONDAY & TUESDAY**

**DOUBLE COUPON DAYS**  
Use your "Cents Off" coupons when purchasing those items and we will give that amount off again.  
50¢ off coupon + Fairway gives 50¢ off = \$1.00 off  
Double coupon offer does not apply to other retailer coupons. Coupons not to exceed 50¢ in value or "FREE" coupons. Refund on coupon not to be more than price of item. Double coupons applies to regular priced merchandise ONLY.

**SCHREIBER CHEESE SINGLES**  
SLICED SINGLES SCHREIBER 12 OZ **99**

**DOG FOOD**  
**399**

**DUNCAN HINES CAKE MIXES**  
18.5 OZ BUY 2 GET 1 **Free!**

**ALL PURPOSE FLOUR**  
**89**

**TEXACO ANTIFREEZE/COOLANT**  
GALLON \$ **349**

**HUNTS TOMATO SAUCE**  
12 OZ 5/100

**CONVENIENCE PACKS PAMPERS**  
**859**

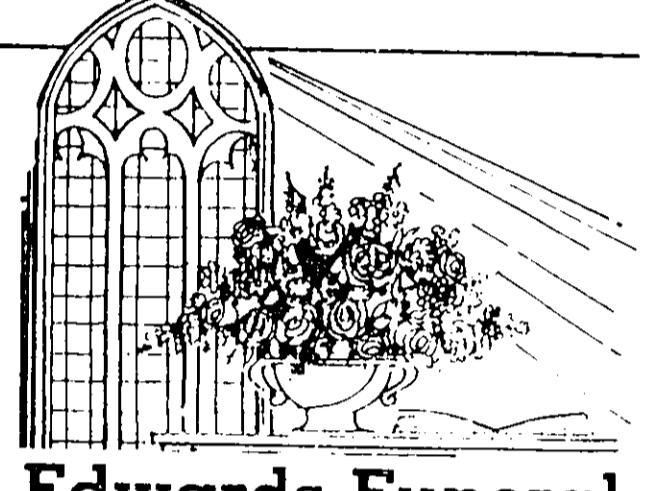
SEASON'S IN...  
**Hunters,**  
**WELCOME!**

To  
**Tyler County**

From The  
**Tyler County**  
**Booster**



DEDICATED SERVICE IN  
TIMES OF NEED ...



**Edwards Funeral Home**  
Funeral Directors:  
James Daniels George Stanley  
Mrs. Joe Edwards

**DON'T LITTER**  
Be A Good Sport  
Help Keep Our  
Forest Clean!  
Colmesneil Telephone  
Company  
837-4446 Colmesneil

2nd Prize:  
**Bushnell Binoculars**  
from Wal-Mart

1st Prize:  
**30-30 Lever Action Rifle!**

3rd Prize:  
**Dinner for 2 At DQ!!**

Courtesy  
East Texas Land Company  
& The Tyler Co. Booster

**RECEPTION TECHNOLOGY**  
We are the Area's  
Satellite Professionals  
**RECEPTION TECHNOLOGY**  
Grand Opening Soon!

Please Call Johnny Hensarling  
717 S. Magnolia Woodville, Texas  
(409) 283-3212

We Carry:  
All Purina Feed Products  
Lone Star Feed  
Plenty Of  
Corn  
For Your  
Deer Feeders

•Purina • Lone Star • Bow Wow  
Dog Feeds

**Tyco Feed Company**  
202 E. Pavillion 283-2106

**1981 Chevy Camaro Z-28**  
\$194.48 per month  
Low Miles Excellent Shape Good Buy

\$6150 Cash Price  
With \$800 Down or Trade & TT&L  
36 Months 17% APR  
At Stock No. 48

**A & M Motor Co.**  
605 S. Magnolia 283-2534  
Serving Tyler County Since 1941

**Going Hunting?**  
**Hensarling Auto Service**  
Self-Service Full-Service

T. Hensarling  
Tommy Hensarling  
283-2566  
102 N. Magnolia Woodville, Tx.

**Red Wings**  
FOR GENERATIONS...  
J.B. BEST & CO.  
SERVING TYLER COUNTY FAMILIES FOR  
MORE THAN THREE GENERATIONS

A Great  
Hunting &  
Work  
Boot

This 8" full-grain, oil-tanned leather boot sets the pace in wear, comfort and fit. From the soft, rolled top band to the oil-resistant polyurethane cushion crepe sole and heel, you'll see why this one continues to be a favorite! Stop in.

Perfect  
For Your  
Camp  
House

**SAVE \$30**  
Everglow's radiant  
ceramics heaters  
with automatic ignition  
**89.99**

• Removable fuel tank for safe, easy filling away from heater  
• Automatic shut-off safety device

**Montgomery Ward**  
100 S. Chatham 283-3791

**Hunters...  
Make This Year's  
Buck Pay Off!!!**

Enter The  
**Tyler County Booster  
10th Annual  
Best Rack  
Contest!!**

Here are the rules.

How to measure your Contest Winner:  
A.-Number of points times two  
B.-Length of both horns from base to tip around outside corners  
C.-Spread at widest point

Each inch equals 1 point! Person with highest total points wins first place. (Antler point must be 1/2" to qualify)

**PRIZES**  
1st 30-30 Rifle  
2nd Bushnell Binoculars  
3rd Dinner for two at the Dairy Queen

30-30 Winchester Rifle Courtesy East Texas Land Co. & The Tyler County Booster.

Insta-Focus Non corrosive parts FROM WAL-MART

We Hope  
Your  
Hunting  
Trip  
Is  
Successful  
And  
Enjoyable!

**TOM'S JR.**  
Next To  
Tom's Supermarket

Gas-Ice-Groceries-Oil-  
Milk-Drinks-Cigarettes  
Ammunition  
The Lowest Prices  
In Spurger  
On Shotgun Shells

Open 5am til 9pm 7 Days A Week

**The Working Man's Store** 429-3438

**Good Luck Hunters!**

**Big "B"**  
Economy Sweet Feed  
9% Natural Protein  
50 lb Sack \$4.90  
(While Supply Lasts)

**Circle 9  
Farm & Ranch Supply**  
105 W. Holly Behind Roy's Super-Sav

**Davis Food Market**  
Headquarters  
CHUNK STYLE  
DOG FOOD  
50 LB. \$7.25

Warren, Texas 547-3339

**\$529.79  
Down-Payment Sale  
85 Crown Victoria "S"**

\$254.79 Per Month On A 48 Mo. Lease For This Fully Equipped 4Dr Sedan With V8 Auto. Overdrive, Air Conditioner, AM-FM Stereo, Power Steering & Brakes, WSW Steel Radial Tires, Bodyside Molding, Tinted Glass, Speed Control, Clock, Vinyl Trim, Right Side Remote Mirror

**KNAPP FORD**  
283-2526 Woodville 69 & 287

FOLLOW THESE  
HUNTING  
SAFETY RULES:

- Guns should always be unloaded when not in use.
- Always be sure that action and barrel are clear of obstructions, and that ammunition of the proper size is being used.
- Always keep chamber empty or on safety until you are ready to shoot.
- Be sure of your target before you fire; acquaint yourself with your integrated game's features.
- Don't climb a fence or tree or jump a ditch with a loaded gun; keep muzzle pointed away from yourself and others, and pointed up in the air.

**Temple-Eastex**  
Specialty Gun Shop

**Rifle & Shotgun Shells**  
**SPORTSMAN'S HEADQUARTERS**  
•Hunting & Fishing License  
Barbecue:  
Chicken, Ribs & Sausage  
Self-Service Arco Gas  
Any Size Block Ice

**South Magnolia Drive-In**  
Open 5-11  
Woodville

**smile!**

Personalized Christmas cards

Nothing can express the spirit of the holiday season like a family portrait on a beautiful personalized photo greeting card from Stylart and Studio on the Square. This Saturday, Nov. 17th, we are offering \$20.00 off our Family Indoor Portraits. This is for one day only, so don't miss this savings!

**Studio On The Square**  
100 S. Chatham  
Woodville, Texas

Top  
Quality  
Game  
Feeders  
Game  
or  
Fish!

**STEEBUCK STORE**  
AUTOMATICALLY WITH A  
**LEHMAN'S AUTOMATIC FEEDER**

110 S. Magnolia 283-2527  
East Texas Land Co.

**First National Bank of Woodville**  
From The Board of Directors, Officers and Employees

President: Clyde P. Rayson  
Vice President: Charles E. Hester, Jr.  
Chairman of The Board: Director  
Kenneth S. Miller, Vice Chairman: Director  
Lester G. Cook, Cashier  
Larry W. Taylor, Banking Officer  
Virginia Haralson, Director

Director: H. Dean Babin, Steve Evans, Humley Kennison, Jim Martin, Stephen L. Yearwood, Joe Cobb, Jeff Foltz, Jerry G. Hester, Hank Quinn

Branch: M. T. 62 Drive in M. T. 730 (F.D.) 283-3257

**FDIC**

**Toby's One Stop**  
Open 5am 7 Days  
Close at 10pm Nightly 11:00pm Fri. & Sat.

**Our Fall Deli Includes:**  
Fried Chicken, Potato Wedges, Hot Fried Pie, Corn Dogs, Egg Rolls

**Barbecues:**  
Sliced Brisket, Chipped Beef, Chicken-Half or Whole, Hot Links, Polish Sausage

**We Also Have:**  
Breakfast, Hot & Cold Sandwiches, Fountain Beer, Clear Customers, Tacos, Soups, Fried Dishes, Super Sandwiches

**No Stock. Everything For The Hunter!**

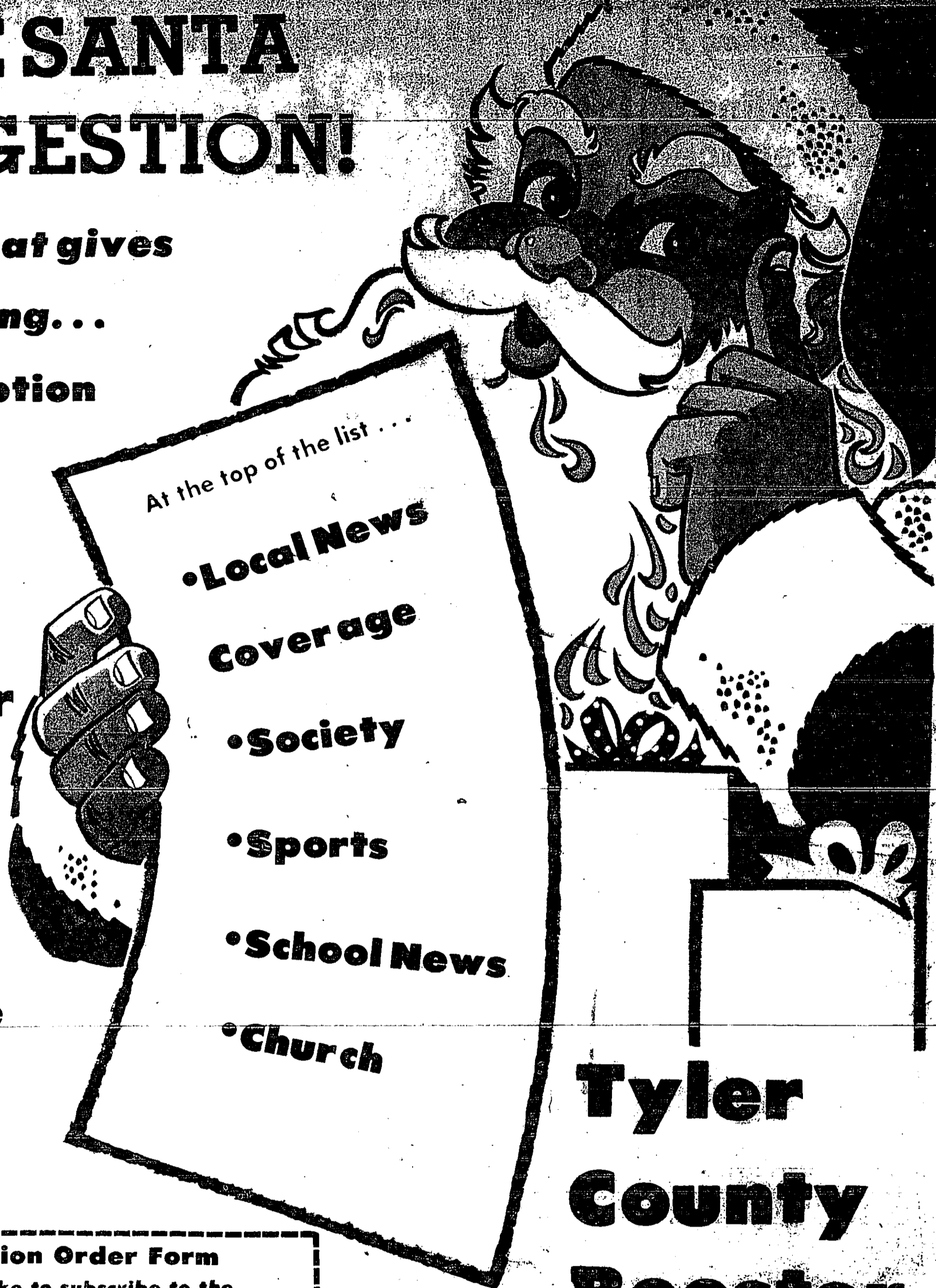
100 S. of Center Light & Highway 69 & 287

# LATE SANTA SUGGESTION!

The gift that gives  
all year long...

A Subscription  
To The  
**Tyler  
County  
Booster**

Subscribe  
Today!



## Tyler County Booster

### Subscription Order Form

Yes, I would like to subscribe to the  
Tyler County Booster .

Name \_\_\_\_\_

Address \_\_\_\_\_

City \_\_\_\_\_ State \_\_\_\_\_ Zip \_\_\_\_\_

Amount enclosed \_\_\_\_\_

Make checks payable to Tyler County Booster

Tyler County	\$6.50
Polk, Angelina, Jasper & Hardin Counties	\$7.50
Other Texas Cities	\$8.50
Other States	\$9.50
Overseas	\$11.50

**Mail Orders To: Tyler County Booster ,**  
**Box 248, Woodville, TX 75070**