



Vol. 55 No. 42
22 Pages 2 Sections

THE TYLER COUNTY

BOOSTER

SERVING TYLER COUNTY SINCE 1930

"TELL 'EM YOU SAW IT
IN THE
TYLER COUNTY BOOSTER"

October 17, 1985
Woodville, Tx. 75799

Wildwood Group Nearing Acquisition

The final phase of re-organization and are hopeful details can be worked out quickly and implemented prior to Dec. 1, 1985, Spears said. Wildwood until all details are completed, he added.

Wildwood Resort City was first organized in 1962 as a sub-division by Beaumont businessmen, George Norman, Guy Dalrymple, Charles Kelley, Vernon Hicks and Gus Becker. In 1974 Larry Parker (not the Mr. Larry Parker of Village Mills) purchased the tract of land which consisted of 2,353 acres, half of which is situated

The resident and non-resident committees are presently working with Recreation officials on



NICE NEW ROADS... Approximately \$229,000 worth of asphalt is currently being poured in Woodville on Hwy 69 and 190 by the Highway Department according to Thomas Morgan, Engineering Technician. The work should be completed in a week to ten days depending on weather conditions.

\$390,000 Grant O.K.

By Mary McGowan

A \$390,000 grant for county road improvements has been officially approved by Governor Mark White and will go into effect in four to six weeks, according to a letter received from the Governor last week. The letter of approval was read by Judge Allen Sturrock during the regular Commission's Court meeting held Monday. Money from the grant will be used to pave the Old Doucette Road and replace an unsafe bridge over Turkey Creek.

Also on the agenda, bids were received on the Dodge Mini Van and 1983 Sheriff's car. Those making bids were as follows:

1. Car - \$1,011.11 by John M. Lade, Woodville;
2. Car - \$450 by H.D. Wagley, Spurger;
3. Van - \$750 by Emanuel Baptist Church, Woodville;
4. Van - \$201.01 by John M. Lade, Woodville;
5. Van - \$100 by James Auto Sales, Doucette.

12 due to the cancellation of the coverage by Republic Ins. of Houston. Bids have been solicited for coverage, but as yet, none have been received. The Commissioner's agreed to extend the bidding until Friday, Oct. 18, to see if any bids will come in.

Barbara Tolbert, Tax Appraiser, has been appointed Director of the Appraisal District in a unanimous vote by commissioners W.E. "Bill" Brown was appointed to replace Archie Wallings as Judge for Box 14. Spurger and Jack Lewellen will replace Harris for Box 10, Colmesneil.

In other action, the court agreed to the expense allowance report from the County Auditor's Office and decided to table the Budget Workshop until Friday, Oct. 18.

'Will Get Job Done', Candidate Says

The people of Texas deserve an Attorney General - they can believe in one who gets the job done for them," said State Senator Buster Brown, a candidate for the Republican nomination for Attorney General. Brown stopped off in Woodville on Monday, Oct. 14 during a campaign run through East Texas. He was welcomed to Woodville by a gathering of supporters at Don Forse's house where his position on Anti-crime legislation was applauded.

Among the bills he has worked to get passed is one coming up in November which is designed to alleviate appeals of convicted criminals on technical defects due to errors in the original indictment. Under present Texas law, a convicted person may appeal on grounds that a word was misspelled or left out of the original indictment, even if this does not change the course of the conviction. Proposition XI will, if passed, mean the accused must fully agree with every word of the original indictment before the trial begins or state objections and have it corrected, therefore saving the time and expense of a retrial due to technical error.

In January, Brown was responsible for passing a bill which requires judges to explain the parole system's eligibility requirements to the jury

City Nix's GSU Hike

By Mary McGowan

City's sewer lines, according to Wooten. Keller has spoken to other factories in the vicinity and has garnered support for such a project. The companies involved would be willing to enter into a contract with the City and come to a financial agreement towards providing sewer lines to the area. The council has agreed to discuss the matter with Keller further after a formal proposal has been set and presented to the council at the next monthly meeting. A letter of resignation was reluctantly accepted from Nova Ray Watts as City Health Inspector and council agreed to

Budget Down 3%

A \$1,687,559 Budget for fiscal year 1985/86 was approved by the Woodville City Council at the regular meeting Monday, Oct. 14.

The action represents about a three percent decrease over last year's budget of \$1,690,483.

The general fund was dropped from \$674,517.46 to a proposed \$655,576 and the Gas Department was also expecting a decrease, but may have to be increased if the 50 percent decrease in the natural gas rate does not come through, said City Manager Walt Davis.

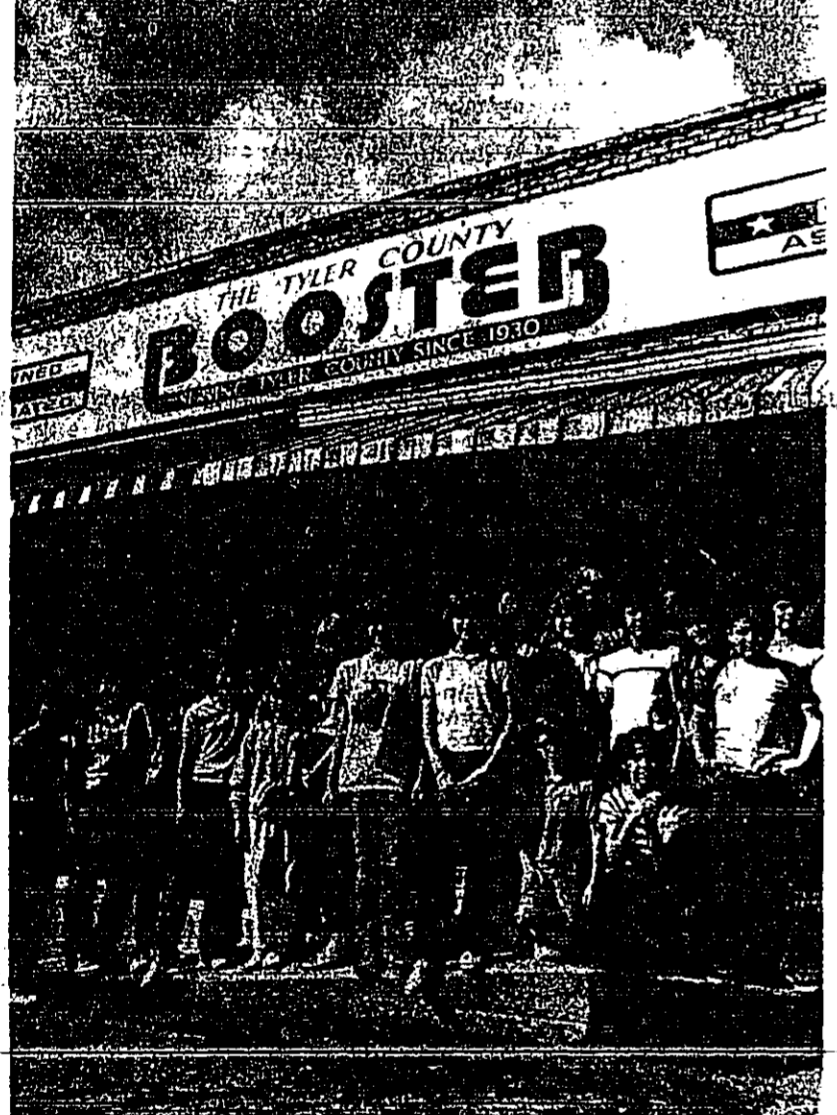
The Water Department allowance was raised to \$371,249 over last year's \$332,634.23.

District Appoints Pachall To Post

By John L. Tompkins

The Spurger School Board meeting in regularly scheduled session Thursday, Oct. 10 chose Debbie Pachall as its new nominee on the Tyler County Tax Appraisal Board with

four board members voting for Pachall and two board members voting for renomination of current Appraisal Board representative Aden Jordan. Pachall was nominated by Orval



REPORTERS ALL--Members of Mrs. Billie Matthews Colmesneil Sixth Grade Class visited THE BOOSTER Monday as part of a class project in producing their newspaper entitled "The Sixth Sense." The group was the most interested in the photographic lab in THE BOOSTER.

Blake To Speak

Richard Cardwell, President of the Deep East Texas Development Association announced today that State Senator Roy Blake will be the principal speaker for the October monthly meeting, which will be held at the Woodville Inn in Woodville, beginning at 10 a.m. on Friday the 25th.

Reports from the committee chairman Representatives of state and federal agencies will be given at 10 a.m. "Anyone in the East Texas area, who has a particular problem pertaining to roads, water, schools, timber or city governments is particularly invited to attend the October meeting and discuss them", President Cardwell said.

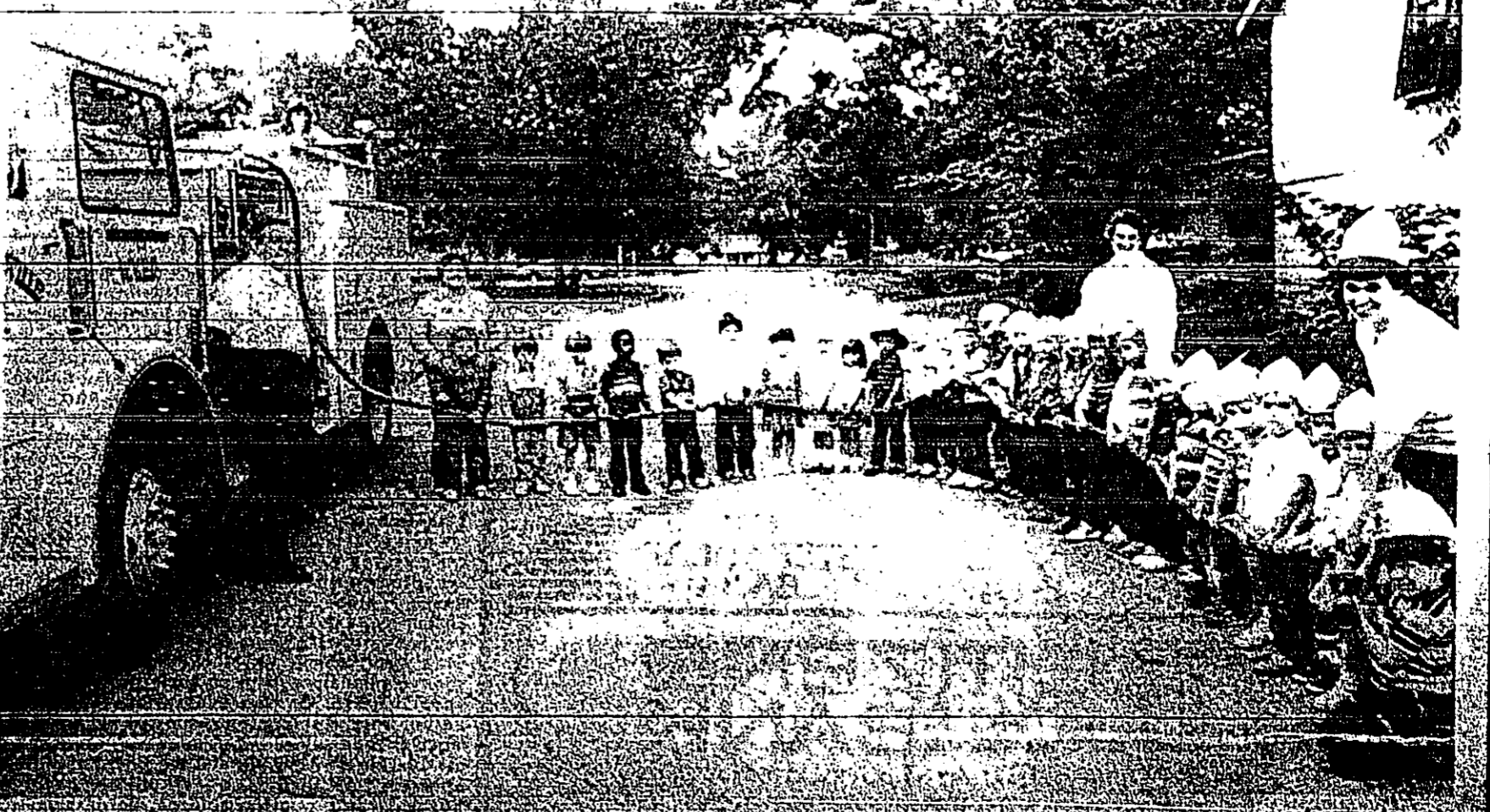
Membership in the Deep East Texas Development Association is open to individuals, associations, public and private groups, businesses, industries and government agencies.

If you are not a member of the Association and would like to attend this meeting to hear about how important the "Water Plan and Proposed Amendments" are in the Deep East Texas area, please feel free to do so", President Cardwell said.

PIC, Baker To Meet

A joint meeting of the Department of Community Affairs, Legal Council (PIC) and the Chief Elected Official (CEO) of the Deep East Texas Area will be held at the Rodeway Inn in Lufkin on Oct. 17, at 6 P.M. according to reports from the joint meeting.

The meeting will be a new program in favor of the Nacogdoches-based East Texas Business Institute. Another source of controversy has been over whether the PIC has power to advise the state or both the PIC and the CEO.



HELPING HANDS - FUTURE FIREMAN AND WOMEN - Walt Davis of the Woodville Volunteer Fire Department (at left) shows the Woodville Fire Department's new fire truck to a group of young boys. The group also got a ride on the fire truck and ask questions of Davis about what it's like to be a fireman.



ONLY 15 DAYS TO HALLOWEEN

PERSONAL & FAMILY

accent on

tyler county



Dr. B. Carter Elmore

Bethel Baptist Sets Revival

Dr. B. Carter Elmore will be in revival at Bethel Baptist Church in Warren Sunday through Thursday, October 20-24, with services beginning each night at 7:00. The special guest singer will be Rev. Don Richey of Warren.

Dr. Elmore has an outstanding record as pastor and bible scholar. He attended high school in Nashville, Tennessee, received an A. A. degree from Mars Hill College in Mars Hill, North Carolina and a B. A. degree from Carson-Newman College in Jefferson City, Tennessee. He holds a Master of Divinity from Southern Baptist Sem-

inary in Louisville, Kentucky and a Doctor of Theology from Luther Rice Seminary in Jacksonville, Florida.

He began his ministry as a Mission Pastor in 1957 when he was only 25 years old. He pastored Tennessee churches in Ashland, Hickory, Columbia, Dickson and Chattanooga from 1958 to 1978 when he moved to the Highlands Baptist Church in Huntsville, Alabama. In 1980 he accepted the pastorate of the First Baptist Church in Silsbee where he still serves.

Over the years, Dr. Elmore has traveled extensively, visiting several countries in Europe and England, to come for the food, Iceland, Egypt, Turkey, fun, fellowship and special devotional time. During one of his trips, he held a revival at one of the Southern Baptist day night Youth Activities will be following the Bethel Baptist in evening service and will feature a Pizza-roll food-fest. Dr. Elmore will also be a special guest speaker.

Rev. W. L. (Bro. Bill) Fabriguze, Pastor at Bethel Baptist, is urging all members and inviting all area residents to attend said.

"Dr. Elmore is a dynamic preacher. You will be richly blessed by his evening at 6:00. All children up through the sixth grade are invited to these revival services."

Shopping With Diane

By Diane Sitton

This week we've previewed a special once-a-year shopping opportunity at the home of Bob and Virgie Frazier. We've also visited a new Tyler County business. Let's go see.

SOMETHING WORTH REPEATING - After months of preparation, on Friday, October 18, the doors will swing open at Bob and Virgie Frazier's home and the 5th Annual Harvest Sale will begin. Indications are that this will be the biggest and best ever.

Over the past four years, the sale has earned a following. "We now have regular customers from Beaumont, Houston and Lufkin," says Virgie.

Country decorating has never been bigger and this is one of the reasons the sale is a "must" with regular folk along with antique lovers and collectors.

This year the Frazier's will offer a Shaker wood display box of walnut and maple, dated near the turn of the century. They will also offer a Shaker quilt rack.

Other items include wooden grocery boxes, antique china, black tin, old silver and pewter, nostalgic linens and quilts. Assorted baskets, wooden decoys, a maple sugar bucket, an English ship lantern and a coffee mill are also offered.

The Frazier's will again offer a selection of artistically crafted herbal and dried flower wreaths and arrangements. Many include herbs raised in the Frazier's own garden. All are delicately scented and ideal for holiday decorating or gift giving. Many include sea lavender, autumn mist, statice, broom, and one of the many varieties of East Texas goldenrod.

The Harvest Sale begins Friday, October 18, and continues through Friday, October 25. Drive south on Highway 59/287 to Seneca Road. Turn left and follow the signs.

NEW BUSINESS - The L'il Eagles Play School at 708 Kelley Blvd. has recently opened in Woodville and is now accepting youngsters ages new borns and up.

According to Kathy Kinnon, Owner/Director, the school stresses, "Learning made fun through play" and schedules free play in the morning and a school environment in the afternoon.

Arts and crafts, educational tapes and programs and access to a computer will be offered.

Both Kathy and Assistant Director Rejessa Spivey are experienced in early childhood development with a combined total of seven years experience. Gina Bowens, Home Economic Cooperative Education student, will assist in the afternoon. The school is licensed by the state.

L'il Eagles Play School is open from 7:30 a.m. until 5:30 p.m. Special arrangements can be made for before and after hours care. The school offers hot meals and serves two nutritious snacks each day. They also accept drop-ins and part time students.

Call Kathy today at 283-7500.

OFFICIALLY NAMED - The Furniture Center, 1123 South Magnolia, Woodville, has been appointed an authorized Armstrong Carpet Studio.

Carpet Studios, a new concept in merchandising, offer the latest in consumer information, complete product selection, and modern displays that closely simulate home lighting.

Large samples of carpet are displayed in a way that shoppers can view them all at a glance. The samples are easy to remove and replace from the displays for comparison shopping.

Sales personnel are trained by Armstrong to give reliable advice to customers on decorative performance and maintenance features of Armstrong Carpet. Drop by today.

Fund Raising Fish Fry

The Woodville Lion's Club will have a fish fry at the Woodville-Diboll football game, Friday, October 19, 1985. The tickets are on sale 190 East on Hwy. and may be obtained on November 1, 1985, from any member of the club.

McKee Honored

Jerry McKee of five plaque honoring Jerry's Exxon & Chain their Hillister has been honored as a member of the Husquarna Crown Club. The Crown Club was instituted by Husquarna, the International Franchise Association, and the International Franchise Association. McKee was named as a member of the Husquarna Crown Club. The Crown Club was instituted by Husquarna, the International Franchise Association, and the International Franchise Association.



Birthday Quiz

HAPPY BIRTHDAY!! Guess Who? Any wonder that this cute little doll won the "Most Beautiful Baby" contest. Of course that was 58 years ago. Can you recognize him? He drives around town in a green Ford pickup with two brown and white bird dogs looking over his shoulder.

Sowbar Named Executive

Linda Sowbar has been named executive of Caring is Sharing in Tyler County. It was announced at a board meeting on Oct. 2. She is a member of St. Paul's Episcopal Church and has been very active in Caring is Sharing.

Hillister Happenings

We regret to learn that Carl Anderson is very ill and is in Baptist Hospital in Beaumont. We trust he soon will be well enough to come home.

Leroy and Nita Holt of Port Arthur were here last week with their daughter, Mrs. Ethel Read, and her husband, Fred. Mrs. Ethel Read visited her daughter, Peggy Phillips and family in Beaumont last week and enjoyed the old fashioned quilt show.

James DeRamus of Carthage was here Monday visiting home folks.

Velma Sumrall, Alberta Haynes with Althea Holt, enjoyed Thursday in Center visiting Mr. Fortenberry, Wheat & Safford, 3400.

After The Sale

Tyler County Fair items still for sale are as follows:

- Joe Duke-Warren 4-H barrow, AAA Series & Movant Air Conditioning, \$250.
- Kimberly Duke-Warren 4-H, steel, Brookshire Bros. \$1,000.
- Leah Foxworth-Warren FFA, steel, Tyco Feed Co. and Fifth Wheel Ranch, \$1,200.
- Billy Read-Warren FFA, broilers, Billy Pate, \$100.
- Jay Pate-Warren FFA, barrow, Jarrots County Farm Bureau, \$50.
- Krystall Redden-Woodville 4-H, barrow (To Page 12)

Fortenberry, Wheat & Safford, 3400. Tonya Monk-Warren FFA, barrow, Ben Read Logging, \$300.

Drug Abuse Program Oct. 22

The Fred Lions Club is sponsoring a Drug Abuse Awareness Program. It will be Oct. 22, 1985 at 7 P.M. at the Fred Fire Hall on Hwy. 92. Guest speaker will be Jim Noon from Beaumont. It will be very educational for the whole family, adults and children will benefit from this program. All the community are invited. Hope all of you will come and bring a friend. There will be no charges.

L'il Eagles Play School

708 Kelley Blvd • Woodville
283-7500

State Licensed Day Care

- Open 7:30 to 5:30
- Before and After Hours Care by Special Arrangements
- Before and After School Care
- Hot Meals and 2 Nutritious Snacks Served Daily

Kathy Kinnon, Owner
3 Years Experience in Early Childhood Development

United In Marriage

Katie Devern McQueen Johns of Houston, daughter of Mrs. Ezzie McQueen of Woodville and Mr. Louis Calvin Johns of Malvern, Arkansas became the bride of Andrew Nichols, Jr. of Houston, son of Mrs. Pannie Bumphis of Jennings, Louisiana, and Mr. Andrew Nichols, Sr. of Denver, Colorado in a candlelight ceremony at Pleasant Hill Baptist Church on September 21, at 7:30 in the evening. Reverend L. A. Kennedy pastor of the New Community Baptist Church of Houston, Texas, performed the double ring ceremony.

Junior bridesmaids included Ruth Houston of Woodville on piano, and Neauman Allen of Houston on Saxophone. Added a touch of everlasting love when the member for Permanent director and coordinators.

Caring is Sharing is located at 600 Elm Street, and is open from 9:11 A.M. Monday, Wednesday and Friday.

Enter The Booster's Football Contest

Gamma Phi Chapter of Alpha Delta Kappa Sorority hosted a luncheon meeting for District XI at the Woodville Hotel, Saturday October 12. The luncheon is an annual affair celebrating the founding of this international sorority. Ninety members and guests were present.

Doris Cantrell, South Central Region Grand Vice-President, was the speaker. Ruth Houston, music teacher for Woodville I.S.D., accompanied the group with several musical selections.

Gamma Phi Hosts Luncheon

Alpha Delta Kappa is an international sorority of teachers from Tyler County.

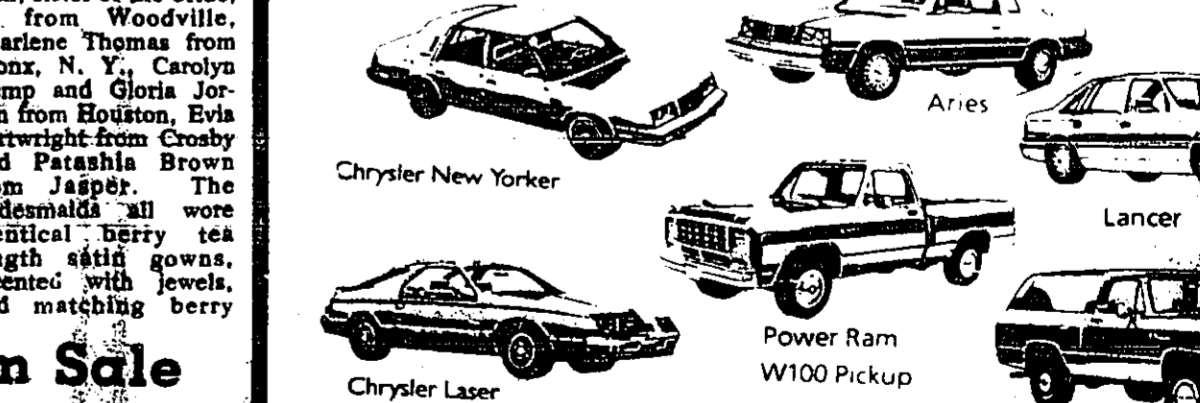
The business meeting was conducted by Shirley Gann, Warren I.S.D. Chairman of District XI. The Alpha Delta Kappa is an international sorority of teachers from Tyler County.

Mop/Broom Sale

The Woodville Lion's Club will conduct a mop and broom sale at Woodville, and surrounding communities. The sale will include mop, brooms and other cleaning aids to households and local businesses. All of the items available are returned by the club and visually impaired workers in the various communities. The sale will be held on Friday, October 19, from 9:00 a.m. until 5:00 p.m. at the Woodville Fire Hall.

Closeout Sale

All 1985 Model Cars & Trucks



Ends Oct. 26, 1985

Plymouth Dodge Trucks CHRYSLER

LARRY TREST CHRYSLER CENTER, INC. HWY 69 S. WOODVILLE 283-8151 283-8152

Home Improvement Loans...



CITIZENS STATE BANK
P. O. BOX 109 WOODVILLE, TEXAS 75797
Ph: 409-283-2561

Fred Carnival

Carnival is from 5 p.m. to 8 p.m. and the dance is from 8 p.m. - 11 p.m. Dance October 26. The Fred Parents-Teachers Club is sponsoring a Halloween Carnival and Dance October 26. The

Plants In The Home Is Program Theme

GIWOC Woman's Study Club met Tuesday afternoon, October 8, at the home of Mrs. Jewel Crain, no. 1123 Magnolia. The President Mrs. E. B. Sullivan presided over the business meeting. Mrs. Eugene Sa-

District Appoints..

Hanson, Jordan by Lee Bingham. Board member Virgil Segrest was not present at the meeting.

District Tax Assessor Hanson, Jordan by Lee Bingham. Board member Virgil Segrest was not present at the meeting.

District Tax Assessor Hanson, Jordan by Lee Bingham. Board member Virgil Segrest was not present at the meeting.

District Tax Assessor Hanson, Jordan by Lee Bingham. Board member Virgil Segrest was not present at the meeting.

District Tax Assessor Hanson, Jordan by Lee Bingham. Board member Virgil Segrest was not present at the meeting.

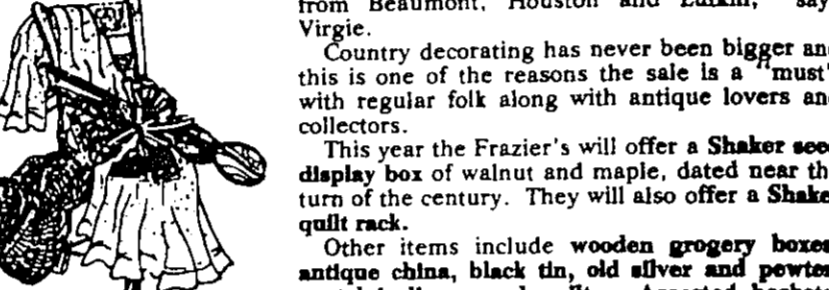
District Tax Assessor Hanson, Jordan by Lee Bingham. Board member Virgil Segrest was not present at the meeting.

District Tax Assessor Hanson, Jordan by Lee Bingham. Board member Virgil Segrest was not present at the meeting.

District Tax Assessor Hanson, Jordan by Lee Bingham. Board member Virgil Segrest was not present at the meeting.

District Tax Assessor Hanson, Jordan by Lee Bingham. Board member Virgil Segrest was not present at the meeting.

District Tax Assessor Hanson, Jordan by Lee Bingham. Board member Virgil Segrest was not present at the meeting.



Other items include wooden grocery boxes, antique china, black tin, old silver and pewter, nostalgic linens and quilts. Assorted baskets, wooden decoys, a maple sugar bucket, an English ship lantern and a coffee mill are also offered.

Arts and crafts, educational tapes and programs and access to a computer will be offered.

Both Kathy and Assistant Director Rejessa Spivey are experienced in early childhood development with a combined total of seven years experience.

Gina Bowens, Home Economic Cooperative Education student, will assist in the afternoon. The school is licensed by the state.

L'il Eagles Play School is open from 7:30 a.m. until 5:30 p.m. Special arrangements can be made for before and after hours care. The school offers hot meals and serves two nutritious snacks each day. They also accept drop-ins and part time students.

Call Kathy today at 283-7500.

Large samples of carpet are displayed in a way that shoppers can view them all at a glance. The samples are easy to remove and replace from the displays for comparison shopping.

Sales personnel are trained by Armstrong to give reliable advice to customers on decorative performance and maintenance features of Armstrong Carpet. Drop by today.

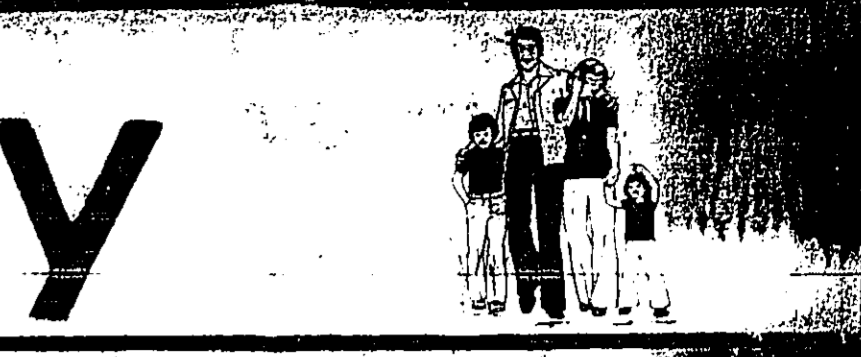
The Woodville Lion's Club will have a fish fry at the Woodville-Diboll football game, Friday, October 19, 1985. The tickets are on sale 190 East on Hwy. and may be obtained on November 1, 1985, from any member of the club.

Jerry McKee of five plaque honoring Jerry's Exxon & Chain their Hillister has been honored as a member of the Husquarna Crown Club. The Crown Club was instituted by Husquarna, the International Franchise Association, and the International Franchise Association.

Doris Cantrell, South Central Region Grand Vice-President, was the speaker. Ruth Houston, music teacher for Woodville I.S.D., accompanied the group with several musical selections.

The business meeting was conducted by Shirley Gann, Warren I.S.D. Chairman of District XI. The Alpha Delta Kappa is an international sorority of teachers from Tyler County.

The Woodville Lion's Club will conduct a mop and broom sale at Woodville, and surrounding communities. The sale will include mop, brooms and other cleaning aids to households and local businesses. All of the items available are returned by the club and visually impaired workers in the various communities. The sale will be held on Friday, October 19, from 9:00 a.m. until 5:00 p.m. at the Woodville Fire Hall.



Mrs. Andrew Nichols, Jr.

Colmesneil Crafts Fall Set For November

Do your Christmas shopping with the Colmesneil Extension Homemakers Club at their Annual Christmas Boutique (Craft Fair) November 1 from 9-5 in the Colmesneil Community Center located off Hwy. 69 behind the City Hall.

Dance Oct. 19

A dance will be held on October 19 from 8 P.M. to 1 A.M. at the Woodville Inn, sponsored by the Tyler County Dogwood Festival Music.

Deep East Texas will be

Sandwiches, soups, and drinks will be sold. Tickets are \$15 couple and \$10 single. BYOB.

Artisans from across

wood Festival Music.

Artisans from across

wood Festival Music.

wood Festival Music.

Winner's SALE

888

1" x 25' Powerlock RULE

SULLIVAN'S
FOR ALL YOUR HARDWARE NEEDS
211 W. Bluff 283-2231



That's right team tear out the coupon on the following page and you may intercept the \$20 cash prize from the Tyler County Booster.

You may win \$20⁰⁰

Woodville Dairy Queen No.'s 1 & 2

Dairy Queen

COUPON

Chicken Fried Steak Dinner **2.99**

ENCORE PERFORMANCE: Gail Robbing of Colmesneil who has won twice before, is one of this week's 520 winners in the BOOSTER'S Football Contest. Try your luck and you too can become \$20 richer.

Just In Time For Football!

PHILCO COLOR

25" TRIM SET with Remote Control

McClure Furniture
305 N. Magnolia 283-2519

Football Contest

RULES

All entries must be placed in entry box at the BOOSTER office by 12 noon on Friday or in the mail (Tyler County Booster P.O. Box 248, Woodville, Texas (75779)) postmarked before Friday.

Entry can be made on entry blank or facsimile of such drawn out at 5:00 PM. All entries become the property of Tyler County Booster.

ONLY ONE ENTRY PER PERSON PER WEEK WILL BE ACCEPTED

If a game is cancelled or rescheduled, that game will not be judged.

Every effort will be made to notify each week's winners by noon the following Monday. If a winner cannot be contacted by that time he/she has one week to claim prize money after his/her name appears in paper.

ENTRY BLANK Check The **Winners**

Name _____

Address _____

Phone Where You Can Be Reached _____

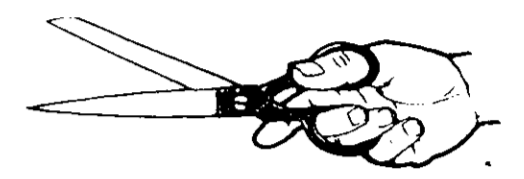
Saturday _____ Monday (8-12 noon) _____

<input type="checkbox"/> HEMPHILL AT WOODVILLE	<input type="checkbox"/> BRIDGE CITY AT SILS BEE
<input type="checkbox"/> WARREN AT ORANGEFIELD	<input type="checkbox"/> SAN AUGUSTINE AT CENTER
<input type="checkbox"/> SABINE PASS AT CHESTER	<input type="checkbox"/> NEWTON AT KOUNTIZE
<input type="checkbox"/> COLMESNEIL AT APPLE SPRINGS	<input type="checkbox"/> TEXAS A & M AT BAYLOR
<input type="checkbox"/> SOUTH PARK AT JASPER	<input type="checkbox"/> TEXAS AT ARKANSAS

Give Score _____ Tiebreaker _____

COWBOYS AT PHILADELPHIA

You may win \$20⁰⁰



We're The Best in Our **FIELD GOAL**

And That's Our **GOAL**

ALLISON POLE MILL

547-3321 Warren

Ask About **BanClub!**

CITIZENS STATE BANK
WOODVILLE 283-2561

THE STEPAHEAD BANK
MEMBER FDIC

Also Don't Forget Our New Drive-In Banking Hours:
7:30-5 Mon.-Thurs.
7:30-5:30 Friday

We Support All Tyler County Football Teams!!!

J. FEDERAL
1001 West Bluff Woodville 283-3716

Warren High's Player Of The Week

WARRIORS
Bubba Moore

We Support The Warren Warriors!

Davis Food Market
547-3339 Warren

We Support All Tyler County Football Teams!!

Edwards Funeral Service Life Insurance Co.
113 W. Holly 283-2511

Jonsered ProLine

Power Saws
Brushcutters
Woodsplitters

969-2276

Hickman Sales & Service

Backs The **Chester Yellowjackets**

FULL SERVICE STATION
OIL - LUBRICATION
TIRE REPAIR - DIESEL
NEW TIRES - MINOR REPAIRS
ROAD SERVICE - LOGGIN SUPPLIES
Hydraulic Hoses
Safemark Distributor
HWY 287 AT FM 1745 CHESTER

Go! Warren Warriors!!

Welcome, Coach Butech Silway!

Little Ace Drive-In

Open 6-10 7 Days

Shawnee Feed Ammunition
Hunting & Fishing License
Duck Stamps Grocery Needs

547-2237 Warren

Air Filters
\$1.00
25% Off

Spark Plugs 99¢

Motorcraft QUALITY PARTS EXCEED THE NEED

KNAPP SALES
WOODVILLE

Tyler County Athletes! Have A Great Season!!

A-Z DISCOUNT AUTO PARTS

Truck & Trailer Parts
283-2635
283-2501
1015 South Mag Woodville

Check Out Our **SAFE, SECURE** (Many Sizes Available)

Safety Deposit Boxes Now Available

TEXAS SAVINGS and Loan Association
P.O. Box 1000 Woodville
Member FDIC

Good Luck To All Tyler County Athletes!

Ken George Real Estate
"Selling Tyler County"

Office: 283-3727 Hwy. 69 South
403 S. Magnolia Woodville

JONES COUNTRY MUSIC PARK

We Support All The Area Teams & Urge You To Attend The Games & Support Yours.

5 Miles East Of Colmesneil On 256 287-4443

Front Brake Special!!

Includes: Replace pads, Turn rotors if needed, Clean inspect & repack front wheel bearing.

Special!! FRONT END ALIGNMENT \$15⁰⁰

\$49⁹⁵

S.J.'s Texaco
Formerly N/A Corner Texaco
Now Owner: Joe Hyniec
103 S. Magnolia 283-3492 Woodville

Colmesneil Telephone Co.

Back The **Colmesneil Bulldogs!!!!**

837-4446 Colmesneil

Good Luck To All Tyler County Football Teams!!

Kirby

first national bank of woodville

From The Board Of Directors Officers and Employees

OFFICERS	DIRECTORS
KEN SNIDER Chairman of the Board	BRIAN BABIN JOE CASH
TOBY SPURLOCK President and Chief Executive Officer	STEPHEN EVANS VIRGINIA BARALSON
JEFF FORTENBERRY Vice President	JOHN E. KINNEY HUNTLEY KENNESON
SHERRI ZOCH Cashier	TOM KNAPP JAMES D. MARTIN III
JANAY RAINET Banking Officer	ROBERT QUINN GLYNN P. REVERE
	KEN SNIDER STEPHENIE YEARWOOD

Banking Hours
Lobby: Mon.-Fri. 9-5 Drive-In: Mon.-Fri. 7:30-5
Fri. 9-6 Fri. 7:30-5
Thank You For Banking With Us

SUBSCRIBE TO THE BOOSTER

NOTICE OF CALCULATION OF EFFECTIVE TAX RATE, ESTIMATED UNENCUMBERED FUND BALANCES, AND DEBT SCHEDULE

I, **WALTON DAVIS**, Tax Assessor/Collector for City of Woodville, in accordance with Sec. 26.04, Property Tax Code, have calculated \$ **0.2036** per \$100 of value as the tax rate which may not be exceeded by more than three percent by the governing body of the City of Woodville without holding a public hearing as required by the code.

The estimated unencumbered fund balance for Maintenance & Operation fund: \$ **75,500.22**
The estimated unencumbered fund balance for Interest & Sinking fund: \$ **-0-**

The following schedule lists debt obligations that 1985 property taxes will pay:

	Principal	Interest and Paying agent fees	Total
1962 General Obligation	\$ 10,000	\$ 3,825	\$ 13,825
1968 General Obligation	5,000	500	5,500
			\$ 19,325

WALTON DAVIS, Tax Assessor/Collector
October 14, 1985

CALCULATIONS USED TO DETERMINE EFFECTIVE TAX RATE

I. DATA

1. 1984 Total tax levy from the 1984 tax roll	\$ 113,869.41
2. 1984 Tax rate (\$.2036 M&O and \$.0456 I&S)	\$ 25 /\$100
3. 1984 Debt service (I&S) levy	\$ 20,759.41
4. 1984 Maintenance and operation (M&O)	\$ 93,140.00
5. 1984 M&O taxes on property in territory that has ceased to be a part of unit in 1985	\$ -
6. 1984 M&O taxes on property becoming exempt in 1985	\$ -
7. 1984 M&O taxes on taxable value lost because property is appraised at less than market value in 1985	\$ -
8. 1985 Total taxable value of all property	\$ 27,906,442.00
9. 1985 Taxable value of new improvements added since Jan. 1, 1984	\$ 3,142,838
10. 1985 Taxable value of property annexed since Jan. 1, 1984	\$ -
11. 1985 Tax levy needed to satisfy debt service (I&S)	\$ 19,325.00
12. Rate to raise 1984 tax due to appraisal roll errors (lost dollars divided by difference of 1985 taxable values minus 1985 over-65 homesteads taxable value)	\$ - /\$100
13. Rate to raise 1984 tax due to appraisal roll errors (lost dollars divided by difference of 1985 taxable values minus 1985 over-65 homesteads taxable value)	\$ - /\$100
14. 1984 M&O taxes used to regain lost 1983 levy	\$ -

II. CALCULATION

MAINTENANCE AND OPERATION (M&O) TAX RATE

(A) 1984 Total tax levy (Data 1)	\$ 113,869.41
(B) Subtract 1984 debt service levy (Data 3)	\$ 20,759.41
(C) Subtract 1984 taxes on property no longer in unit (Data 5)	\$ -
(D) Subtract 1984 taxes on exemptions (Data 6)	\$ -
(E) Subtract 1984 taxes on productivity valuation (Data 7)	\$ -
(F) Subtract 1984 taxes used to regain lost 1983 levy (Data 14)	\$ 3,142.84
(G) Adjusted 1984 M&O levy	\$ 93,140.00
(H) 1985 Total taxable value of all property (Data 8)	\$ 27,906,442.00
(I) Subtract 1985 value of new improvements (Data 9)	\$ 3,142,838.00
(J) Subtract 1985 value of annexed property (Data 10)	\$ -
(K) Subtract 1985 taxable value for M&O	\$ 24,763,604.00
(L) Divide the adjusted 1984 M&O levy (I-G above) by the adjusted 1985 taxable value for M&O (J-K above)	\$ 3.76 /\$100
(M) Multiply by \$100 valuation	\$ 376.00 /\$100
(N) Effective M&O rate for 1985	\$ 3.76 /\$100

INTEREST AND SINKING (I&S) TAX RATE

(A) 1985 I&S levy needed to satisfy debt (Data 11)	\$ 19,325.00
(B) Subtract 1985 I&S levy for all property (Data 8)	\$ 27,906,442.00
(C) Divide the adjusted 1985 I&S levy (A-B above) by the 1985 total taxable value (I-H above)	\$ 0.000334 /\$100
(D) Multiply by \$100 valuation	\$ 0.0334 /\$100
(E) Effective I&S rate for 1985	\$ 0.0334 /\$100

APPRAISAL ROLL ERROR RATE

(A) Rate to raise 1984 levy due to appraisal errors (Data 12)	\$ - /\$100
(B) Add rate to regain taxes lost due to errors (Data 13)	\$ - /\$100
(C) Total rate to adjust for appraisal roll errors	\$ - /\$100

TOTAL EFFECTIVE TAX RATE FOR 1985

(A) Effective M&O rate (N-C above)	\$ 3.76 /\$100
(B) Add effective I&S rate (E-C above)	\$ 0.0334 /\$100
(C) Add rate to adjust for appraisal roll errors (C-C above)	\$ - /\$100
(D) 1985 Effective Tax Rate	\$ 3.7934 /\$100

1985 Effective Tax Rate is the tax rate published as required by Sec. 26.04, Property Tax Code.

COMPLIANCE/85

**Your Opinion Is Valuable
Write The Booster
Letters To The Editor**

NOTICE OF CALCULATION OF EFFECTIVE TAX RATE, ESTIMATED UNENCUMBERED FUND BALANCES, AND DEBT SCHEDULE

I, **Karen Spurlock**, Tax Assessor/Collector for Chester ISD, in accordance with Sec. 26.04, Property Tax Code, have calculated \$ **1.25** per \$100 of value as the tax rate which may not be exceeded by more than three percent by the governing body of the Chester ISD without holding a public hearing as required by the code.

The estimated unencumbered fund balance for Maintenance & Operation fund: \$ **34,039.65**
The estimated unencumbered fund balance for Interest & Sinking fund: \$ **27,539.24**

The following schedule lists debt obligations that 1985 property taxes will pay:

	Principal	Interest and Paying Agent Fees	Total
1979 General Obligation	\$73,615	\$6,025	\$79,640

Karen Spurlock, assessor/collector
October 14, 1985

CALCULATIONS USED TO DETERMINE EFFECTIVE TAX RATE

I. DATA

1. 1984 Total tax levy from the 1984 tax roll	\$ 450,562
2. 1984 Tax rate (\$.99 M&O and \$.25 I&S)	\$ 1.24 /\$100
3. 1984 Debt service (I&S) levy	\$ 85,607
4. 1984 Maintenance and operation (M&O) levy	\$ 364,955
5. 1984 M&O taxes on property in territory that has ceased to be a part of unit in 1985	\$ -
6. 1984 M&O taxes on property becoming exempt in 1985	\$ -
7. 1984 M&O taxes on taxable value lost because property is appraised at less than market value in 1985	\$ -
8. 1985 Total taxable value of all property	\$38,868,106
9. 1985 Taxable value of new improvements added since Jan. 1, 1984	\$ 653,998
10. 1985 Taxable value of property annexed since Jan. 1, 1984	\$ 4,640
11. 1985 Tax levy needed to satisfy debt service (I&S)	\$ 79,640.00
12. Rate to raise 1984 tax due to appraisal roll errors (lost dollars divided by difference of 1985 taxable values minus 1985 over-65 homesteads taxable value)	\$ - /\$100
13. Rate to raise 1984 tax due to appraisal roll errors (lost dollars divided by difference of 1985 taxable values minus 1985 over-65 homesteads taxable value)	\$ - /\$100
14. 1984 M&O taxes used to regain lost 1983 levy	\$ 10,158
15. 1984 M&O taxes used to regain lost 1983 levy	\$ 1,097,839
16. Frozen M&O levy of over-65 homesteads with frozen taxes	\$ 2,469
17. Frozen I&S levy of over-65 homesteads with frozen taxes	\$ -
18. Rate to generate reduced state aid or receive maximum equalization allotment (amount of lost aid or additional levy for equalization, divided by 1985 taxable values minus 1985 over-65 homesteads taxable value x 100)	\$ - /\$100
19. Rate to generate reduced state aid or receive maximum equalization allotment (amount of lost aid or additional levy for equalization, divided by 1985 taxable values minus 1985 over-65 homesteads taxable value x 100)	\$ - /\$100

II. CALCULATION

MAINTENANCE AND OPERATION (M&O) TAX RATE

(A) 1984 Total tax levy (Data 1)	\$ 450,562
(B) Subtract 1984 debt service levy (Data 3)	\$ 85,607
(C) Subtract 1984 taxes on property no longer in unit (Data 5)	\$ -
(D) Subtract 1984 taxes on exemptions (Data 6)	\$ -
(E) Subtract 1984 taxes on productivity valuation (Data 7)	\$ -
(F) Subtract 1984 M&O taxes used to regain lost 1983 levy (Data 14)	\$ 10,158
(G) Adjusted 1984 M&O levy	\$ 334,857
(H) 1985 Total taxable value of all property (Data 8)	\$ 38,868,106
(I) Subtract 1985 value of new improvements (Data 9)	\$ 653,998
(J) Subtract 1985 value of annexed property (Data 10)	\$ 4,640
(K) Subtract 1985 value of over-65 homesteads (Data 15)	\$ 1,097,839
(L) Adjusted 1985 taxable value for M&O	\$ 37,111,629
(M) Divide the adjusted 1984 M&O levy (I-H above) by the adjusted 1985 taxable value for M&O (J-K above)	\$ 3.34 /\$100
(N) Multiply by \$100 valuation	\$ 334.00 /\$100
(O) Effective M&O rate for 1985	\$ 3.34 /\$100

INTEREST AND SINKING (I&S) TAX RATE

(A) 1985 I&S levy needed to satisfy debt (Data 11)	\$ 79,640.00
(B) Subtract frozen I&S levy of over-65 homesteads (Data 17)	\$ -
(C) Adjusted 1985 I&S levy	\$ 79,640.00
(D) 1985 Total taxable value of all property (Data 8)	\$ 38,868,106
(E) Subtract 1985 value of over-65 homesteads (Data 15)	\$ 1,097,839
(F) Adjusted 1985 taxable value for I&S	\$ 37,770,267
(G) Divide the adjusted 1985 I&S levy (C-E above) by the adjusted 1985 taxable value for I&S (F-F above)	\$ 2.11 /\$100
(H) Multiply by \$100 valuation	\$ 211.00 /\$100
(I) Effective I&S rate for 1985	\$ 2.11 /\$100

APPRAISAL ROLL ERROR RATE

(A) Rate to raise 1984 levy due to appraisal errors (Data 12)	\$ - /\$100
(B) Add rate to regain taxes lost due to errors (Data 13)	\$ - /\$100
(C) Total rate to adjust for appraisal roll errors	\$ - /\$100

TOTAL EFFECTIVE TAX RATE FOR 1985

(A) Effective M&O rate (O-C above)	\$ 3.34 /\$100
(B) Add effective I&S rate (I-C above)	\$ 2.11 /\$100
(C) Add rate to adjust for appraisal roll errors (C-C above)	\$ - /\$100
(D) 1985 Effective Tax Rate	\$ 5.45 /\$100

1985 Effective Tax Rate is the tax rate published as required by Sec. 26.04, Property Tax Code.

COMPLIANCE/85

STATE AID/EQUALIZATION ENRICHMENT AID RATE
7. Rate to replace reduced state aid or qualify for maximum equalization (Data 18) \$ - /\$100

NOTICE OF CALCULATION OF EFFECTIVE TAX RATE, ESTIMATED UNENCUMBERED FUND BALANCES, AND DEBT SCHEDULE

I, **Marjorie Jordan**, Tax Assessor/Collector for Spurger ISD, in accordance with Sec. 26.04, Property Tax Code, have calculated \$ **1.20728** per \$100 of value as the tax rate which may not be exceeded by more than three percent by the governing body of the Spurger ISD without holding a public hearing as required by the code.

The estimated unencumbered fund balance for Maintenance & Operation fund: \$ **119,552**
The estimated unencumbered fund balance for Interest & Sinking fund: \$ **7,126**

The following schedule lists debt obligations that 1985 property taxes will pay:

	Principal	Interest	Total
Cafeteria	6,000	624	6,624
Air Conditioning	5,000	895	5,895
New Buildings	40,000	111,071	151,071
			163,600

Marjorie Jordan, Tax Assessor/Collector
October 14, 1985

CALCULATIONS USED TO DETERMINE EFFECTIVE TAX RATE

I. DATA

1. 1984 Total tax levy from the 1984 tax roll	\$ 383,413
2. 1984 Tax rate (\$.25 M&O and \$.55 I&S)	\$ 1.30 /\$100
3. 1984 Debt service (I&S) levy	\$ 161,033
4. 1984 Maintenance and operation (M&O) levy	\$ 222,380
5. 1984 M&O taxes on property in territory that has ceased to be a part of unit in 1985	\$ -
6. 1984 M&O taxes on property becoming exempt in 1985	\$ -
7. 1984 M&O taxes on taxable value lost because property is appraised at less than market value in 1985	\$ -
8. 1985 Total taxable value of all property	\$ 31,927,047
9. 1985 Taxable value of new improvements added since Jan. 1, 1984	\$ 843,400
10. 1985 Taxable value of property annexed since Jan. 1, 1984	\$ -
11. 1985 Tax levy needed to satisfy debt service (I&S)	\$ 163,600.00
12. Rate to raise 1984 tax due to appraisal roll errors (lost dollars divided by difference of 1985 taxable values minus over-65 homesteads taxable value)	\$ - /\$100
13. Rate to raise 1984 tax due to appraisal roll errors (lost dollars divided by difference of 1985 taxable values minus over-65 homesteads taxable value)	\$ - /\$100
14. 1984 M&O taxes used to regain lost 1983 levy	\$ 21,901
15. 1984 M&O taxes used to regain lost 1983 levy	\$ 916,230
16. Frozen M&O levy of over-65 homesteads with frozen taxes	\$ 6,872
17. Frozen I&S levy of over-65 homesteads with frozen taxes	\$ 5,039
18. Rate to generate reduced state aid or receive maximum equalization allotment (amount of lost aid or additional levy for equalization, divided by 1985 taxable values minus 1985 over-65 homesteads taxable value x 100)	\$ - /\$100
19. Rate to generate reduced state aid or receive maximum equalization allotment (amount of lost aid or additional levy for equalization, divided by 1985 taxable values minus 1985 over-65 homesteads taxable value x 100)	\$ - /\$100

II. CALCULATION

MAINTENANCE AND OPERATION (M&O) TAX RATE

(A) 1984 Total tax levy (Data 1)	\$ 383,413
(B) Subtract 1984 debt service levy (Data 3)	\$ 161,033
(C) Subtract 1984 taxes on property no longer in unit (Data 5)	\$ -
(D) Subtract 1984 taxes on exemptions (Data 6)	\$ -
(E) Subtract 1984 taxes on productivity valuation (Data 7)	\$ -
(F) Subtract 1984 M&O taxes used to regain lost 1983 levy (Data 14)	\$ 21,901
(G) Adjusted 1984 M&O levy	\$ 188,572
(H) 1985 Total taxable value of all property (Data 8)	\$ 31,927,047
(I) Subtract 1985 value of new improvements (Data 9)	\$ 843,400
(J) Subtract 1985 value of annexed property (Data 10)	\$ -
(K) Subtract 1985 value of over-65 homesteads (Data 15)	\$ 916,230
(L) Adjusted 1985 taxable value for M&O	\$ 30,167,417
(M) Divide the adjusted 1984 M&O levy (I-H above) by the adjusted 1985 taxable value for M&O (J-K above)	\$ 6.25 /\$100
(N) Multiply by \$100 valuation	\$ 625.00 /\$100
(O) Effective M&O rate for 1985	\$ 6.25 /\$100

INTEREST AND SINKING (I&S) TAX RATE

(A) 1985 I&S levy needed to satisfy debt (Data 11)	\$ 163,600
(B) Subtract frozen I&S levy of over-65 homesteads (Data 17)	\$ 5,039
(C) Adjusted 1985 I&S levy	\$ 158,561
(D) 1985 Total taxable value of all property (Data 8)	\$ 31,927,047
(E) Subtract 1985 value of over-65 homesteads (Data 15)	\$ 916,230
(F) Adjusted 1985 taxable value for I&S	\$ 31,010,817
(G) Divide the adjusted 1985 I&S levy (C-E above) by the adjusted 1985 taxable value for I&S (F-F above)	\$.51 /\$100
(H) Multiply by \$100 valuation	\$ 51.00 /\$100
(I) Effective I&S rate for 1985	\$.51 /\$100

APPRAISAL ROLL ERROR RATE

(A) Rate to raise 1984 levy due to appraisal errors (Data 12)	\$ - /\$100
(B) Add rate to regain taxes lost due to errors (Data 13)	\$ - /\$100
(C) Total rate to adjust for appraisal roll errors	\$ - /\$100

TOTAL EFFECTIVE TAX RATE FOR 1985

(A) Effective M&O rate (O-C above)	\$ 6.25 /\$100
(B) Add effective I&S rate (I-C above)	\$.51 /\$100
(C) Add rate to adjust for appraisal roll errors (C-C above)	\$ - /\$100
(D) 1985 Effective Tax Rate	\$ 6.76 /\$100

1985 Effective Tax Rate is the tax rate published as required by Sec. 26.04, Property Tax Code.

COMPLIANCE/85

STATE AID/EQUALIZATION ENRICHMENT AID RATE
7. Rate to replace reduced state aid or qualify for maximum equalization (Data 18) \$ - /\$100

NOTICE OF CALCULATION OF EFFECTIVE TAX RATE, ESTIMATED UNENCUMBERED FUND BALANCES, AND DEBT SCHEDULE

I, **Sandra Harrison**, Tax Collector for Warren ISD, in accordance with Sec. 26.04, Property Tax Code, have calculated \$ **1.25** per \$100 of value as the tax rate which may not be exceeded by more than three percent by the governing body of the Warren ISD without holding a public hearing as required by the code.

The estimated unencumbered fund balance for Maintenance & Operation fund: \$ **32,605**
The estimated unencumbered fund balance for Interest & Sinking fund: \$ **-0-**

The following schedule lists debt obligations that 1985 property taxes will pay:

	Principal	Interest	Total
1971 Schoolhouse Bonds	\$ 120,000	\$ 6,000	\$ 126,000

Sandra Harrison, Tax Assessor Collector
October 14, 1985

CALCULATIONS USED TO DETERMINE EFFECTIVE TAX RATE

I. DATA

1. 1984 Total tax levy from the 1984 tax roll	\$ 1,685,951
2. 1984 Tax rate (\$ 1.214 M&O and \$.106 I&S)	\$ 1.32 /\$100
3. 1984 Debt service (I&S) levy	\$ 135,387
4. 1984 Maintenance and operation (M&O) levy	\$ 1,550,564
5. 1984 M&O taxes on property in territory that has ceased to be a part of unit in 1985	\$ -
6. 1984 M&O taxes on property becoming exempt in 1985	\$ -
7. 1984 M&O taxes on taxable value lost because property is appraised at less than market value in 1985	\$ -
8. 1985 Total taxable value of all property	\$ 139,031,986
9. 1985 Taxable value of new improvements added since Jan. 1, 1984	\$ 3,275,080
10. 1985 Taxable value of property annexed since Jan. 1, 1984	\$ -
11. 1985 Tax levy needed to satisfy debt service (I&S)	\$ 126,000.00
12. Rate to raise 1984 tax due to appraisal roll errors (lost dollars divided by difference of 1985 taxable values minus over-65 homesteads taxable value)	\$ - /\$100
13. Rate to raise 1984 tax due to appraisal roll errors (lost dollars divided by difference of 1985 taxable values minus over-65 homesteads taxable value)	\$ - /\$100
14. 1984 M&O taxes used to regain lost 1983 levy	\$ -
15. 1984 M&O taxes used to regain lost 1983 levy	\$ 5,295,625
16. Frozen M&O levy of over-65 homesteads with frozen taxes	\$ 35,253
17. Frozen I&S levy of over-65 homesteads with frozen taxes	\$ 3,078
18. Rate to generate reduced state aid or receive maximum equalization allotment (amount of lost aid or additional levy for equalization, divided by 1985 taxable values minus 1985 over-65 homesteads taxable value x 100)	\$ - /\$100
19. Rate to generate reduced state aid or receive maximum equalization allotment (amount of lost aid or additional levy for equalization, divided by 1985 taxable values minus 1985 over-65 homesteads taxable value x 100)	\$ - /\$100

II. CALCULATION

MAINTENANCE AND OPERATION (M&O) TAX RATE

(A) 1984 Total tax levy (Data 1)	\$ 1,685,951
(B) Subtract 1984 debt service levy (Data 3)	\$ 135,387
(C) Subtract 1984 taxes on property no longer in unit (Data 5)	\$ -
(D) Subtract 1984 taxes on exemptions (Data 6)	\$ -
(E) Subtract 1984 taxes on productivity valuation (Data 7)	\$ -
(F) Subtract 1984 M&O taxes used to regain lost 1983 levy (Data 14)	\$ 5,295,625
(G) Adjusted 1984 M&O levy	\$ 1,466,623
(H) 1985 Total taxable value of all property (Data 8)	\$ 139,031,986
(I) Subtract 1985 value of new improvements (Data 9)	\$ 3,275,080
(J) Subtract 1985 value of annexed property (Data 10)	\$ -
(K) Subtract 1985 value of over-65 homesteads (Data 15)	\$ 5,295,625
(L) Adjusted 1985 taxable value for M&O	\$ 130,461,281
(M) Divide the adjusted 1984 M&O levy (I-H above) by the adjusted 1985 taxable value for M&O (J-K above)	\$ 1.124 /\$100
(N) Multiply by \$100 valuation	\$ 112.40 /\$100
(O) Effective M&O rate for 1985	\$ 1.124 /\$100

INTEREST AND SINKING (I&S) TAX RATE

(A) 1985 I&S levy needed to satisfy debt (Data 11)	\$ 126,000
(B) Subtract frozen I&S levy of over-65 homesteads (Data 17)	\$ 3,078
(C) Adjusted 1985 I&S levy	\$ 122,922
(D) 1985 Total taxable value of all property (Data 8)	\$ 139,031,986
(E) Subtract 1985 value of over-65 homesteads (Data 15)	\$ 5,295,625
(F) Adjusted 1985 taxable value for I&S	\$ 133,736,361
(G) Divide the adjusted 1985 I&S levy (C-E above) by the adjusted 1985 taxable value for I&S (F-F above)	\$.000919 /\$100
(H) Multiply by \$100 valuation	\$.0919 /\$100
(I) Effective I&S rate for 1985	\$.0919 /\$100

APPRAISAL

TYLER COUNTY HOSPITAL

Visiting Hours: 10-11 a.m., 2-4 p.m., 6-8:30 p.m.

It's A Boy!

Robert and Cynthia son Stephen Robert Crawford of Doucette...

It's A Girl

Erica Leigh born Warren grandparents Thursday Oct 10 at St. Mary's...

'Citizen of Year'

Margaret McBrade attends at Woodville former Woodville resident...

Dedication

Foundation of Life Church in Woodville, Texas, dedicated...

Minister's Union Anniversary

The Tyler County and Hill Baptist Church Minister's Union...

Devotional Thoughts For Each Day

WEDNESDAY: And it shall come to pass that whatsoever shall call on the name of the Lord...

OBITUARIES

REBECCA SUB JONES: Funeral services for Rebecca Sue Jones, 30, of Woodville...

VERNON MORRIS MILLS: Funeral services for Mr. Vernon Morris Mills, 72, were held at the Huntsville Funeral Home...

V. B. WOODS: Mr. V. B. Woods, 70, of Woodville passed away suddenly...

'Citizen of Year': Margaret McBrade attends at Woodville former Woodville resident...

Dedication: Foundation of Life Church in Woodville, Texas, dedicated...

Minister's Union Anniversary: The Tyler County and Hill Baptist Church Minister's Union...

Church

ABUNDANT LIFE FELLOWSHIP ASSEMBLY OF GOD: Hwy 190 at 92, Dan 9, Texas: Sunday Morning worship at 10:30 a.m....

ASSEMBLY OF GOD: R. C. Tillery, pastor, Sunday School 9:45 a.m., Worship Service 11 a.m....

COLMESNEIL ASSEMBLY OF GOD CHURCH: J. C. Carter, pastor, Sunday School 9:45 a.m., Worship 11 a.m....

HILLISTER ASSEMBLY OF GOD CHURCH: M. E. Hillister, pastor, Sunday School 9:45 a.m., Morning Worship 11 a.m....

OAK GROVE ASSEMBLY OF GOD CHURCH: Hwy 92 between Fred and Spurger, Sunday School 9:45 a.m., Morning Worship 11 a.m....

ROCKLAND ASSEMBLY OF GOD: Edward Wood, pastor, Services Wednesday 7 p.m., Sunday Morning 9:45 a.m....

SEADY GROVE ASSEMBLY OF GOD CHURCH: Sister Leita Brown, pastor, West of Woodville, Sunday School 10 a.m....

SPURGER ASSEMBLY OF GOD CHURCH: Rev. D. W. Hoke, Sr., pastor, Hwy 92, 1 1/2 miles south Spurger, Sunday School 9:45 a.m....

TRINITY CHRISTIAN CENTER: Hwy 190 West, Sunday School 9:30 a.m., Worship 10:30 a.m....

ADVENTIST SEVENTH DAY ADVENTIST CHURCH: Head Elder Alvin Flower, One mile south of Warren, Services Saturday 7 p.m....

CHURCH OF CHRIST W. M. Timmerman, minister, Located 15 miles east of Woodville on Hwy 190...

CHURCH OF CHRIST Theo Haas, preacher, Pine Street, corner of Hwy 287 and Nellius...

HILLISTER CHURCH OF CHRIST Off FM 1013 Beaumont Hill, Evangelist Larry Selvey, Sunday Services Bible Study 10 a.m....

WOODVILLE CHURCH OF CHRIST Gary Latch, minister, Hwy 190 West, Sunday Bible School 9:30 a.m....

Services

FIRST BAPTIST CHURCH: Warren, Kenneth Gauthier, pastor, Sunday School 9:45 a.m., Morning Worship 11 a.m....

FIRST BAPTIST CHURCH OF WOODVILLE: Dr. Raymond Paster, pastor, Hwy 92, 1 1/2 miles south Spurger, Sunday School 9:40 a.m....

FIRST BAPTIST CHURCH OF COLMESNEIL: Pastor, Forest Owens, Doyle Cowart, Minister of Music, Youth & Education...

FIRST BAPTIST CHURCH OF DOUCETTE: J. L. Hollaway, pastor, Spjday School 9:45 a.m., Morning Worship 11 a.m....

FIRST BAPTIST CHURCH OF HILLISTER: Henry Shettles, pastor, Sunday School 9:45 a.m., Morning Worship 11 a.m....

BETHEL BAPTIST CHURCH: Warren, Rev. Bill Fabrigue, pastor, Sunday School 9:45 a.m., Morning Worship 11 a.m....

BETHANY BAPTIST CHURCH: Colmesneil, Rev. T. J. Seamans, pastor, Sunday School 10 a.m., Morning Worship 11 a.m....

BEECH CREEK BAPTIST CHURCH: Rev. Joe Hopkins, pastor, Sunday School 9:45 a.m., Morning Worship 11 a.m....

CAMPION BAPTIST CHURCH: Doucette, Rev. I. S. Hunt, pastor, Sunday School 9:45 a.m., Morning Worship 11 a.m....

CANYON CREEK BAPTIST CHURCH: Chester, G. M. Standley, pastor, Sunday School 10 a.m., Morning Worship 11 a.m....

WOODVILLE CHURCH OF THE NAZARENE: David Brockmeier, pastor, 3 miles south of Woodville on Hwy 69...

FOUNTAIN OF LIFE COMMUNITY CHURCH: Warren, Texas, Sunday services at 10:30 a.m. and Wednesday evening services at 7:00 p.m....

EMMANUEL BAPTIST CHURCH: 2 Mi. north of Doucette on Hwy 69, Sunday School 10 a.m., Morning worship 11 a.m....

ENON BAPTIST CHURCH: Rev. Darrell Young, pastor, Four miles east of Chester on Hwy 1745...

Jorgenson To Bring Message

The evening session of the New Bethel Association (Baptist Southwestern Baptist General Convention of Texas, Southern Baptist Convention) annual meeting will begin at 7 p.m. October 21...



Gene Jorgenson

Revival Set October 27

FAIRVIEW BAPTIST CHURCH REVIVAL: Oct. 27-Nov. 1, 1985. Revival services are set for October 27 through November 1...

Alter Society Quilt Raffle

Our Lady of the Pines Catholic Church Altar Society will raffie an embroidered "Tree of Life" Quilt with Bolster Full Size 68 x 90. Tick- ets will be \$1.00 or a for \$5.00...

Revival

The Woodville United Methodist Church will be holding a Revival Men's breakfast on October 27, 28 and 29. Monday morning and Tuesday morning...

Garage Sale

Our Lady of the Pines member, one man's Catholic Church Men's Club Garage Sale will take place October 25, 26 & 27...

New Bethel Annual Session

On Monday, Oct. 21, the New Bethel Association will hold their annual meeting and workday...

Singing

All lovers of Gospel Music are urged to come to Warren Baptist Church, Saturday, October 19th, at 7 p.m. There will be ample time for singing and a special offering...

Advertisement for Brookshire Bros., Kenneth George Real Estate, Davis Food Market, Magnolia Drive-In Grocery, Knapp Ford Sales Inc., Woodville Inn Motel, Sonic Drive-In.

ATTEND THE SERVICES OF YOUR CHOICE SOON

Advertisement for A & M Motor Co., Inc., Southeast Texas Savings & Loan, Tom's Supermarket, Share Your Church News, Need Nursing Home Care?

Collier Insurance 283-2242

PINEWOODS TERRACE ADULT APARTMENTS 1 & 2 Bedroom Units

Need Nursing Home Care? You owe it to your loved one to visit Holliday Plaza Manor.

Need Nursing Home Care? You owe it to your loved one to visit Holliday Plaza Manor.

Need Nursing Home Care? You owe it to your loved one to visit Holliday Plaza Manor.

Chester Defeats Lutheran North

Chester scored two touchdowns in less than a minute late in the first quarter against Lutheran North of Houston Friday night.

Neither team could move the ball early in the game. Late in the first quarter Lutheran punted the ball into the yellowjackets end zone for a touchback. This put the ball on the Chester 20 and on the first quarter Lutheran punter Chuck Garaway hit Clint Surruck for a 2 point conversion for a 8-0 Chester lead with 1:12 left in the first quarter.

The offense was led by Buck Hood and Zandra Barlow at the running back position and Linemen Rodney Whitworth, Clint Surruck, Ram Whitworth and both the extra point was made by Coach Gazaway.



TOUCH-DOWN! Henry Boykin #36 of Colmesneil goes for a first down in the first quarter against High Island Friday night. Jerry Dabose #24 is ready to help if Henry can break the tackle.

SPORTS PAGE

Warriors Lose To Buna

The Warren Warriors fell behind Buna early in the first quarter and were never able to catch in the first half. Warren ran the kickoff back to their 35 and from there they scored their first touchdown on a 40 yard pass from Gerard Blair and Gerat Blair.

The offense was led by QB Chuck McIntosh, FB Ricky Moore, HB Gerard Blair and Gerat Blair. McIntosh hit 3 passes for 78 yards and was very good Saturday and Sunday.

Warren Volleyball

The Warren girls opened district play in volleyball on October 8th and lost two out of three to Kirbyville. Kirbyville took the first game 15 to 11. Warren then met the Buna 15-40 and Kirbyville took the final game 15 to 13.

Woodville Volleyball

The Eagles suffered Ladyjacks last week before Dibill claimed their first district loss at the hands of the Dibill team shift many times Woodville's varsity.

8.8% Financing Available on



Allison Chevrolet 837-2244 283-7605 Colmesneil

Lake Area Outdoor Report

Hunting, Fishing and Lying

Fishing Report

Fishing was pretty good last Wednesday and was very good Saturday. I fished with my brother-in-law Wednesday and the water was too rough to fish where we wanted to but we still caught some fish.

Hunting Report

Hunters in Tyler County can get after doves, squirrels and deer with bow and arrows now. I have heard of much activities in any except Bow hunting and not a lot of success there.

Bass Club Tournament

The Woodville Bass Club held its October Tournament on David Judalut was named team number Rayburn last week-end and it was a very good tournament.

Eagle J.V. Defeated

The Woodville J.V. gave up two first quarter touchdowns on big plays to San Augustine which led to a 12-0 loss. If we threw out the first quarter we played a very fine ball game.

Women Tennis Tournament

The 2nd Annual Woodville Women's League Fall Doubles Tennis Tournament was a huge success. A special thanks to McCreary/Reider over Tolbert/Trest.

SOCCER SCOREBOARD

Table with soccer scores: DIVISION I CARDINALS-1 VS ROCKETTS-0, BLUE COMETS-0 VS HURRICANES-2, DIVISION II PANTHERS-0 VS KNIGHTHAWKS-4, WOLVES-3 VS COBRAS-1, DIVISION III TUES. HAWKS-3 VS MUSTANGS-0, TERMINATORS-2 VS HAWKS-0

High Island Upsets Bulldogs

The Colmesneil Bulldogs yards for a touchdown in the first quarter and led 14-0 at the end of the first quarter. The Bulldogs drove 50 yards for a touchdown in the first quarter.

Eagles Nest

The Woodville Eagles are currently making progress in the following procedure for the purpose of re-organizing the band.

Woodville Inn-Vitational Tournery Set

The first annual Tee times are 8 a.m. Woodville Inn-ventional and p.m. both days. set for Saturday and the seven stroke Sunday Oct. 26-27, at Deer Trail Country Club.

Fishing Report To San Augustine

The Woodville Eagles consistently, defense lost their first district victory, except for the 1st game at San Augustine quarter we played an off day.

Warrior Whoop

The Warriors these girls played their first District game Friday against the Buna Cougars. It was a close game, but the Warriors came up and received a 11 rating.

Bulldog Growls

The first six weeks has come to an end at Colmesneil, leaving many students wondering if they will get to participate in extra-curricular activities the second six weeks.

Warren FFA Sales

The Warren FFA has had a very successful year. The first six weeks has come to an end at Colmesneil, leaving many students wondering if they will get to participate in extra-curricular activities the second six weeks.

Computers In Our Society

Computers in Warren High School have improved their computer skills in a big way. The only computer previously accessed to Warren High was an Apple IIe.

A Smokey The Bear Visit

An especially large Furby guest was seen on the school grounds. The children also learned not to stay in the house if it catches on fire and grade class enjoyed their time spent learning all about fire prevention.

SCHOOL MENUS

Spurger MONDAY - Spaghetti w/meat sauce, Baked Chicken, Potato Salad, Fruit Cocktail, Milk.

Silent Flame

WOODBURNING STOVES: Three speed, easy access blower with five warm air vents. Steel plate, double wall construction.

A Beautiful Way To Save On Your Heating Costs

Mobile Home Owners We Have Your Size!! Tyler County 283-5222 Tractor, Inc. WOODVILLE

Spurger Woodville Colmesneil

MONDAY - Spaghetti w/meat sauce, Baked Chicken, Potato Salad, Fruit Cocktail, Milk.

SCHOOL MENUS

Spurger MONDAY - Spaghetti w/meat sauce, Baked Chicken, Potato Salad, Fruit Cocktail, Milk.

SCHOOL MENUS

Spurger MONDAY - Spaghetti w/meat sauce, Baked Chicken, Potato Salad, Fruit Cocktail, Milk.

SCHOOL MENUS

Spurger MONDAY - Spaghetti w/meat sauce, Baked Chicken, Potato Salad, Fruit Cocktail, Milk.

SCHOOL MENUS

Spurger MONDAY - Spaghetti w/meat sauce, Baked Chicken, Potato Salad, Fruit Cocktail, Milk.

SCHOOL MENUS

Spurger MONDAY - Spaghetti w/meat sauce, Baked Chicken, Potato Salad, Fruit Cocktail, Milk.

Warrior Whoop

The Warriors these girls played their first District game Friday against the Buna Cougars. It was a close game, but the Warriors came up and received a 11 rating.

Bulldog Growls

The first six weeks has come to an end at Colmesneil, leaving many students wondering if they will get to participate in extra-curricular activities the second six weeks.

Warren FFA Sales

The Warren FFA has had a very successful year. The first six weeks has come to an end at Colmesneil, leaving many students wondering if they will get to participate in extra-curricular activities the second six weeks.

Computers In Our Society

Computers in Warren High School have improved their computer skills in a big way. The only computer previously accessed to Warren High was an Apple IIe.

A Smokey The Bear Visit

An especially large Furby guest was seen on the school grounds. The children also learned not to stay in the house if it catches on fire and grade class enjoyed their time spent learning all about fire prevention.

SCHOOL MENUS

Spurger MONDAY - Spaghetti w/meat sauce, Baked Chicken, Potato Salad, Fruit Cocktail, Milk.

SCHOOL MENUS

Spurger MONDAY - Spaghetti w/meat sauce, Baked Chicken, Potato Salad, Fruit Cocktail, Milk.

SCHOOL MENUS

Spurger MONDAY - Spaghetti w/meat sauce, Baked Chicken, Potato Salad, Fruit Cocktail, Milk.

SCHOOL MENUS

Spurger MONDAY - Spaghetti w/meat sauce, Baked Chicken, Potato Salad, Fruit Cocktail, Milk.

Warrior Whoop

The Warriors these girls played their first District game Friday against the Buna Cougars. It was a close game, but the Warriors came up and received a 11 rating.

Bulldog Growls

The first six weeks has come to an end at Colmesneil, leaving many students wondering if they will get to participate in extra-curricular activities the second six weeks.

Warren FFA Sales

The Warren FFA has had a very successful year. The first six weeks has come to an end at Colmesneil, leaving many students wondering if they will get to participate in extra-curricular activities the second six weeks.

Computers In Our Society

Computers in Warren High School have improved their computer skills in a big way. The only computer previously accessed to Warren High was an Apple IIe.

A Smokey The Bear Visit

An especially large Furby guest was seen on the school grounds. The children also learned not to stay in the house if it catches on fire and grade class enjoyed their time spent learning all about fire prevention.

SCHOOL MENUS

Spurger MONDAY - Spaghetti w/meat sauce, Baked Chicken, Potato Salad, Fruit Cocktail, Milk.

SCHOOL MENUS

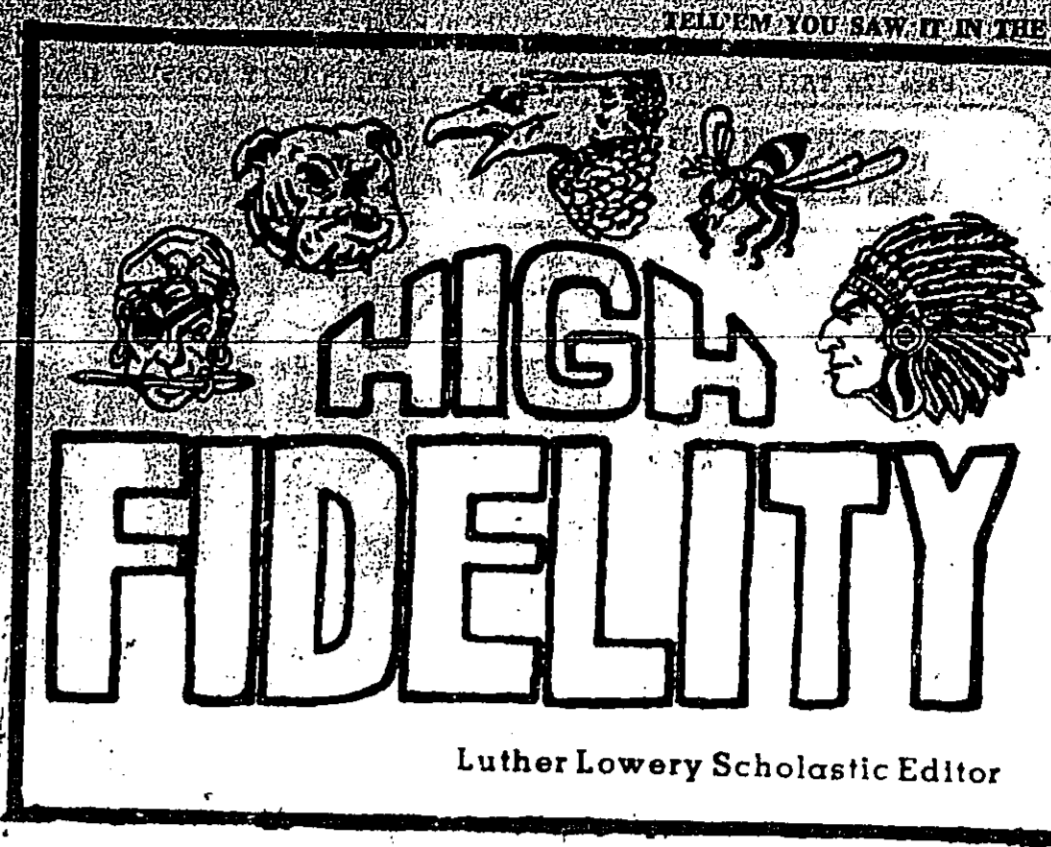
Spurger MONDAY - Spaghetti w/meat sauce, Baked Chicken, Potato Salad, Fruit Cocktail, Milk.

SCHOOL MENUS

Spurger MONDAY - Spaghetti w/meat sauce, Baked Chicken, Potato Salad, Fruit Cocktail, Milk.

SCHOOL MENUS

Spurger MONDAY - Spaghetti w/meat sauce, Baked Chicken, Potato Salad, Fruit Cocktail, Milk.



Warriors cheerleaders in their uniforms.

Warrior Whoop

The Warriors these girls played their first District game Friday against the Buna Cougars. It was a close game, but the Warriors came up and received a 11 rating.

Bulldog Growls

The first six weeks has come to an end at Colmesneil, leaving many students wondering if they will get to participate in extra-curricular activities the second six weeks.

Warren FFA Sales

The Warren FFA has had a very successful year. The first six weeks has come to an end at Colmesneil, leaving many students wondering if they will get to participate in extra-curricular activities the second six weeks.

Computers In Our Society

Computers in Warren High School have improved their computer skills in a big way. The only computer previously accessed to Warren High was an Apple IIe.

A Smokey The Bear Visit

An especially large Furby guest was seen on the school grounds. The children also learned not to stay in the house if it catches on fire and grade class enjoyed their time spent learning all about fire prevention.

SCHOOL MENUS

Spurger MONDAY - Spaghetti w/meat sauce, Baked Chicken, Potato Salad, Fruit Cocktail, Milk.

Warrior Whoop

The Warriors these girls played their first District game Friday against the Buna Cougars. It was a close game, but the Warriors came up and received a 11 rating.

Bulldog Growls

The first six weeks has come to an end at Colmesneil, leaving many students wondering if they will get to participate in extra-curricular activities the second six weeks.

Warren FFA Sales

The Warren FFA has had a very successful year. The first six weeks has come to an end at Colmesneil, leaving many students wondering if they will get to participate in extra-curricular activities the second six weeks.

Computers In Our Society

Computers in Warren High School have improved their computer skills in a big way. The only computer previously accessed to Warren High was an Apple IIe.

A Smokey The Bear Visit

An especially large Furby guest was seen on the school grounds. The children also learned not to stay in the house if it catches on fire and grade class enjoyed their time spent learning all about fire prevention.

SCHOOL MENUS

Spurger MONDAY - Spaghetti w/meat sauce, Baked Chicken, Potato Salad, Fruit Cocktail, Milk.

SCHOOL MENUS

Spurger MONDAY - Spaghetti w/meat sauce, Baked Chicken, Potato Salad, Fruit Cocktail, Milk.

SCHOOL MENUS

Spurger MONDAY - Spaghetti w/meat sauce, Baked Chicken, Potato Salad, Fruit Cocktail, Milk.

SCHOOL MENUS

Spurger MONDAY - Spaghetti w/meat sauce, Baked Chicken, Potato Salad, Fruit Cocktail, Milk.

BEST FOOD BUYS IN TOWN

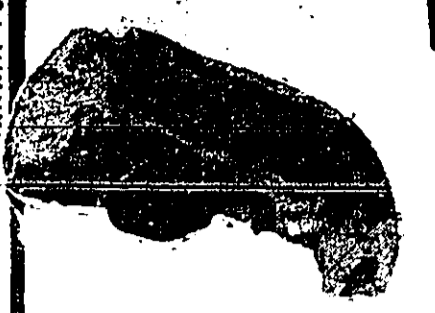
SPECIALS ARE GOOD FOR SEVEN DAYS. Oct. 16 thru Oct. 22. All Specials for Cash Only.

Table listing food items and prices: Heavy Beef Round Steak 2.19 lb, Heavy Beef Rib for BQ 79 lb, Heavy Beef T-Bones 3.59 lb, Heavy Beef Brakes 99 lb, Boneless Chuck Steak 1.99 lb, Boneless Chuck Roast 1.89 lb, Ground Chuck 3# or more 1.00 or more, 1.89 lb, Decker Pressed Ham 2.19 lb, Small Pork Ribs 1.89 lb, End Cut Pork Chops 1.39 lb, Korn King Boneless Hams Whole 1.59 lb, Wilson Baked Ham 3.59 lb, Hormel Pressed Ham 2.29 lb, Eckrich Smoked Sausage 1.99 lb, Wilson Loose Weiners 99 lb, Hormel Sliced Slab Bacon 3# or more 2.59 lb, All 2 Liter Dr. Pepper Products 1.29 plus tax, All 16 oz. Bottle Dr. Pepper Product 45 plus tax, Dr. Pepper & 7 Up can drinks 1.99 plus tax, Pepsi 2 Liter 2.09 plus tax, Pepsi 6 pkg. can drinks 2.19 plus tax, Pepsi 6 pkg. 16 oz. 2.19 + tax or .45 ea cold + tax, Santa Maria Milk 1.59 gal., Borden's Milk, h. gal. 1.59, Trophy Cup Milk, gal. 2.19, Borden's Orange Drink Old Fashion Borden 1/2 gal. .89 gal. + tax, Grade A Large Eggs out. 1.99, Potatoes 8# bag 1.49.

Package Deal Ready for Freezer: 3# Lean Ground chuck All 16 1/2# of meat for \$29.95, 3# Boneless Chuck Steak, 3# Center Cut Pork Chops, 4 1/2# of Fryer Grade A.

Grammer's Grocery

W. Bluff Woodville 283-2328

BEEF T-BONE STEAK

 LB **\$2.49**

SLICE SLAB BACON

 LB **\$1.49**

BEEF SPARE RIBS
 IDEAL FOR COOK OUT

 LB **\$0.79**

GOOCH ALL MEAT FRANKS

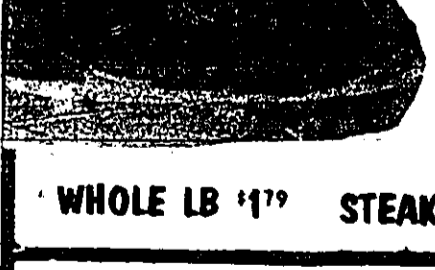
 12 OZ **\$0.99**

BEEF BONELESS ENGLISH CUT ROAST

 LB **\$1.49**

BEEF BONELESS SAVOY STEAK
 FAMILY PKG

 LB **\$1.69**


BEEF BONELESS TOP SIRLOIN

 WHOLE LB '17" STEAK LB **\$2.29**

BEEF BONELESS RIB EYE STEAK
 FAMILY PKG

 LB **\$2.99**

BEEF BONELESS BRISKET

 LB **\$0.99**

CHIFFON MARGARINE
 1 LB BOWLS

\$0.89

HUBBELL SMOKED SAUSAGE
 5 LB BOX

\$5.49

MOCK TURKEY
 WHOLE LB '17" STEAK LB **\$2.29**

SENIOR CITIZEN DISCOUNT
 Wednesday to Senior Citizen 5% Discount Shopping Day...
CASH REGISTER RECEIPT
 WE WILL PAY 1% OF THE TOTAL TO ANY CHURCH, SCOUT, LITTLE LEAGUE OR CHARITABLE ORGANIZATION. START SAVING TODAY. JUST ANOTHER WAY OF BEING A PART OF A FINE COMMUNITY.

shop at home
 Make the rounds
 WOODSLEY - TEEPE COUNTY, TEXAS
 Prices Good Oct. 16-22, 1989

BORDEN ICE CREAM
 1/2 GALLON ROUND CARTON
 BUY 2 GET 1 FREE!
 LIMIT FOUR 1/2 GALLON CARTONS

PARWAY HOME VIDEO FREE MEMBERSHIPS
 PANASONIC PV-1330 FRONT LOAD VCR
 '16" PLUS TAX WEEKLY FOR 52 WEEKS INCLUDES 3 MOVIES PER PAYMENT
 PANASONIC PV-1340 FRONT LOAD VCR
 '18" PLUS TAX WEEKLY FOR 52 WEEKS INCLUDES 3 MOVIES PER PAYMENT
RENT ANY MOVIE FOR 1 DAY FOR ONLY 99¢ PLUS TAX
 FREE POPCORN
MONDAYS AND TUESDAYS RENT TWO MOVIES, GET A THIRD ONE FREE

HARVEST OF FRESH DELICIOUS PRODUCE
 BAKING SIZE RUSSET POTATOES 4 LBS **\$1.00**
 BANANAS 3 LBS **\$1.00**
 CRUNCHY CARROTS 2 LB BAG **69¢**
 EASTERN RED ROME APPLES LB **59¢**
 CRISP GREEN CELERY STALK **49¢**
 FLORIDA AVOCADOS EACH **69¢**
 POMEGRANATES **3/99¢**

LIGHT CRUST FLOUR
 PLAIN 5 LB BAG **\$0.69**
 ALL PURPOSE ENRICHED FLOUR

SLICED CHEESE SANDWICH MATE
 12 OZ

\$0.99


WOLF CHILI
 NO BEANS

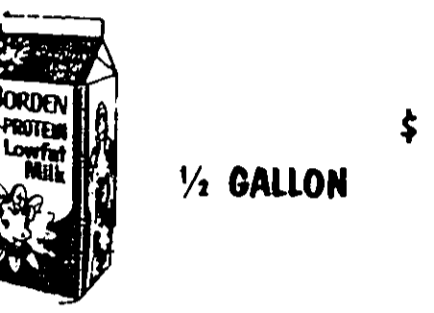
 19 OZ **\$1.19**

shop at home
 Make the rounds
 WOODSLEY - TEEPE COUNTY, TEXAS
 Prices Good Oct. 16-22, 1989

RONCO SPAGHETTI
 REGULAR OR THIN

 12 OZ **\$0.59**

LIGHT CRUST YELLOW CORN MEAL
 5 LB

\$0.79

BORDENS HI PRO MILK
 1/2 GALLON

\$1.29

BRIGHT EYES CAT FOOD
 6 OZ
3/100

TROPICANA ORANGE JUICE
 FROZEN CONCENTRATED
 6 OZ **\$0.69**

Campbell's HARVEST OF GOOD FOODS
 PEPPERIDGE FARM LAYER CAKE 17 OZ
 ALL VARIETIES **\$1.89**

SWANSON GREAT STARTS BREAKFAST

89¢

FRANCO AMERICAN SPAGHETTI
 15 OZ **2/89¢**
CAMPBELL'S TOMATO SOUP 3/100

MONDAY & TUESDAY DOUBLE COUPON DAYS
 Use your "Cents Off" coupons when purchasing these items and we will give that amount off again...
 \$10 off coupon, Fairway \$10 off = \$1.00 off
 Double coupon offer does not apply to other retailer coupons. Coupons that do exceed coupon value will be voided. Refund on coupon Act to be more than price of item. Double coupons applies to regular priced merchandise ONLY.

Come By And Compare FAIRWAY FOODS
 New Low, Low Prices



HEATING WITH WOOD? DON'T GO AROUND IN CIRCLES... HEAD STRAIGHT FOR SULLIVAN'S... FOR ALL YOUR WOOD HEATER AND PIPE NEEDS! 6" and 8" Single Wall and Triple Wall Pipe. Caps, elbows, raincocks, dampers, etc. Heaters, stove mats, chimney brushes.

SULLIVAN'S HARDWARE
211 West Bluff 283-2231

DEER TRAIL
Hwy 190 W Country Club Woodville

TROPHIES! PRIZES

WOODVILLE INN - vitational

2 Big Days! **Oct. 26 & 27**

18 HOLES 2-MAN TEAMS TEETIMES: 8 A.M. & 1 P.M.

Don't Miss!!!

- SCRAMBLE - SATURDAY
- BEST BALL - SUNDAY

525 ENTRY FEE/PERSON (NO COUPONS, PLEASE)

DEADLINE TO ENTER ALL GOLFERS INVITED OCT. 19

FOR DETAILS CALL LUNCH SAT. BBQ \$5. PLATE THE MIDDLE BUSTER

283-7985

TREAT YOURSELF ROYALLY

Peanut Buster Parfait
Banana Split
Double Delight

99 cents each only after 5 p.m.

Offer good now thru October 31st at participating stores

Dairy Queen
Just keeps on getting better

© Copyright 1985, D.O. Co. All Rights Reserved. ® The Trademarks of the D.O. Co. ® Trademark Am. D.O. Co.

Texas In 'New Era' For Water

AUSTIN—Texas... "A new era" for Texas water has been proclaimed by the chief executive of the state water agency.

Larry R. Soward, executive director of the Texas Water Commission, has told each owner of a wastewater discharge permit in Texas that he is prepared to uniformly enforce all provisions of state law which pertain to water quality matters.

In a letter which reached each of the permit holders this week, Soward said that he is "firmly committed to take whatever actions are necessary or appropriate to actively and aggressively enforce all rules, standards, orders, permits, licenses and

laws under the jurisdiction of the Texas Water Commission."

Similar letters will be sent to owners of permits to withdraw water from the state's lakes and streams and to dispose of hazardous wastes.

"It is a new era in Texas," Soward said in explaining his letter. "Enforcement is going to be at the forefront of our efforts. We want everyone to know that we mean business."

On Sept. 1, the Texas Water Commission assumed enforcement responsibilities relating to the protection of the state's waters. Those responsibilities had been under the jurisdiction of the Texas Department of Water Resources, which was abolished in 1985.

The Legislature also gave increased enforcement powers to the Water Commission. Hearings are now mandatory for permit holders who have been out of compliance with their

Announcing New Hours!

LISA'S Barbaress Shop

Now Open Mon-Fri. 10a.m.-6p.m.

547-3131

Located in **DOGWOOD TRAILS Hwy 69 Warren, Tx.**

Farabee In Study

AUSTIN—Senator Ray Farabee, Chairman of the Senate State Affairs Committee, announced an interim study to address the issue of weight limits on timber trucks traveling East Texas roads.

The controversial nature of this issue and the interest expressed by the timber industry, county governments, the Highway Department and several others prompted the initiation of this study," said Farabee.

During the 69th Legislature, several bills

PUBLIC NOTICE

All interested persons are hereby notified that the RS-98B 1985 survey of local government finances report for the City of Woodville is available for public inspection. The report and the supporting documentation from which the report was prepared are on file in the office of the City Secretary, 113 N. Charlton, Woodville, Texas. Walton Davis City Secretary

WAL-MART

FALL FABRIC SALE

Reg. 97¢ **82¢**

Tape Measure • 60 inches or 150cm • Shrink resistant

1.67 Yard
Eldorado Solids
100% Polyester • 45 inches wide • Machine wash • Tumble dry

3.37 Yard
Sportswear Fleece Solids
100% Creston acrylic • 60 inches wide • Ideal for active sportswear, dresses and tops • Fashion and basic colors • Machine wash • Tumble dry

2.94 Yard
Penature Bright Velour Solids
100% Polyester • 45 inches wide • Machine wash • Tumble dry

3.47 YARD
Doe Suede Solids
100% Colanase Fortrel polyester • 54 inches wide • For dresses, sportswear separates and active wear • Latest fashion colors • Machine wash • Tumble dry

3.78 Yard
Sandhurst Wooly Fancies & Solids
84% Acrilan acrylic, wool, silk, polyester • 45 inches wide • Machine wash • Tumble dry

3.26 Yard
Featherly Pinwale Corduroy Solids
84% Cotton • Colanase Fortrel polyester • 45 inches wide • For skirts, jackets, pants and sportswear separates • Beautiful colors • Machine wash • Tumble dry

74¢
Stitch Witchery
100% Polyamide • 18 inch wide • For fusing fabric • A moist stitching Reg. 88¢ yard

62¢
Reg. 74¢
Metal Sewing & Knitting Gauge

4.22
Olfa® Rotary Cutter
For cutting cloth, leather, paper or vinyl • No RTY-1 Reg. 4.97

1.04
JAMIE
A Sayell® yarn made of 35% DuPont Orlon® Acrylon 15% rayon • 1.75 ounce skein • 150 yards • 100% machine washable • Machine wash • Tumble dry

7 For \$1
Ward's Thread
White and assorted colors • Reg. 1.00

Prices Good Oct. 16-22, 1985
U.S. Hwy. 69 South Woodville
Hours: 9am-9pm (Mon-Sat)

Keep Up With News!

Tyler County Community News!

SUBSCRIBE TO THE Tyler County Booster



\$2.50 in Tyler County
 \$2.50 in Polk, Angelina, Jasper & Hardin Counties
 \$3.50 in Other Texas Cities

\$9.50 in Other States
 \$10.50 Overseas

Name _____
 Address _____
 Town _____ State _____ Zip _____

Enclosed is my check for _____
 Mail this coupon with payment to:
 Tyler County Booster, P.O. Box 146, Woodville, TX 75979

ENJOY THE LEISURE AND COMFORT OF THE WARD'S QUARDER

WARD'S QUARDER

2BR. 2BA. BUNGALOW • 2,500 sq. ft. • 33x12 garage with shop area. All on 3 lots. \$42,500.

BEAUTIFUL 2BR. 2BA. MOBILE HOME • On 1/2 ac., well, small guest house, travel trailer included on nice shady lot. \$22,000.

2BR. 2BA. HOME with carport & workshop. Nice location. \$45,000.

NICE 1 BR. house on 2 lots. Owner: D. Mansood, Near Lake. \$18,000.

2 BD, 1 ba., nice location, waterfront with pier..... LOTS..... \$49,900.

5.36 ACRES heavily wooded near lake. \$11,000.

283-3110 **283-2353**

Charles Rawson Co.



Introducing **The Ward's Quarder™**

1/4 lb., 100% beef patty dressed with your choice of crisp lettuce, garden-ripe tomatoes, Ward's sauce, diced onions and pickles on an oven-fresh bun. Served homestyle with a smile.

WARD'S

1125 S. Magnolia Street
Woodville, Texas

Where old-fashioned means more than just root beer!

Do Armadillos Hold Their Breath?

Do armadillos hold their breath and walk across river bottoms? Do catfish have whiskers? Are panthers black and do they cry?

like screaming women. These and other questions are answered this November at the Big Thicket Animal Workshop. This sponsored

course of animal exhibits and day evening from 6:30 to 9:30 p.m. will be open to the public of all ages and 27th from 6:30 to 8:30 p.m. at the Big Thicket headquarters building in studies fish followed by Beaumont, each Wed.

sessions on amphibians, reptiles, birds, and mammals. Exhibits will be where and introduced to the most common animals in the Big Thicket area and to blue-tailed

lizards, snakes, and their haunts. Exhibits will be where and introduced to the most common animals in the Big Thicket area and to blue-tailed

SUBSCRIBE TO THE TYLER COUNTY BOOSTER

**WITHOUT
OUTDOOR
AREA
LIGHTING,**

**YOU DON'T
KNOW
WHAT
YOU'RE
MISSING**

What goes on in the dark of your yard?

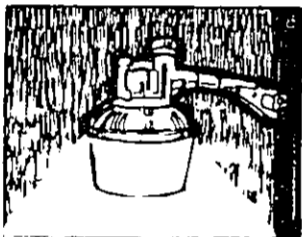
Things that might make you nervous more often than not will disappear under the flood of light.

And think how the security and comfort of light can extend the pleasure of daytime family outdoor recreation.

Security and Fun all wrapped up in a neat package of light, month in and month out, at a price that can fit even the smallest home and business budget.

GSU offers a variety of outdoor area lighting options, priced on your monthly electric bill to include operation and maintenance.

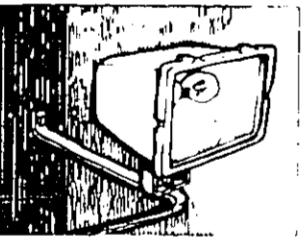
**Take Your Pick,
And Give Us A Call.**



100 WATT SECURITY

Clear, wide spread feature providing light in a 180° arc. Ideal for general lighting and security.

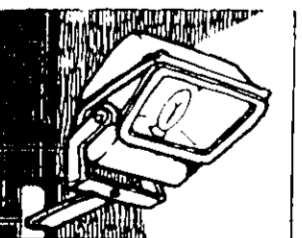
Installation ... \$25
Monthly Operation ... \$9.29



100 WATT FLOOD

Direct light to where you want it. Brightest light per area than any other size. 1/2" light fixture.

Installation ... \$25
Monthly Operation ... \$10.99



400 WATT FLOOD

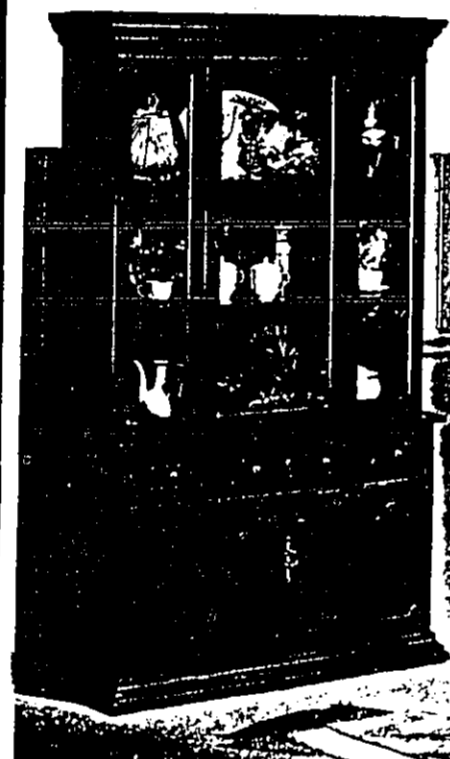
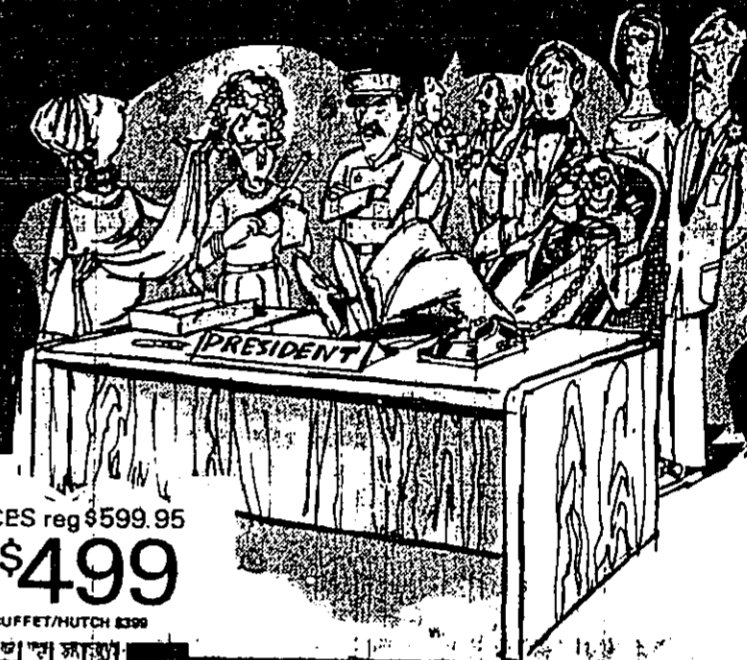
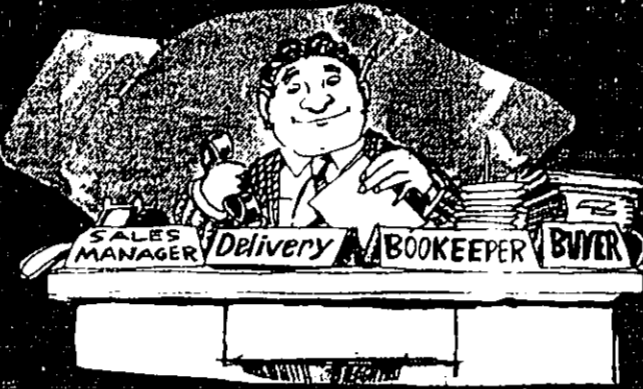
Ideal for lighting large areas like a business or parking lot. Several can be mounted on one pole.

Installation ... \$50
Monthly Operation ... \$23.08

Installed on existing GSU pole

Call Your Local GSU Office for Centsable area lights

**GULF STATES
UTILITIES CO.**



SAVE \$100.95
RICH OAK LOOK WITH
GENUINE CANE INSET
UPHOLSTERED CHAIRS

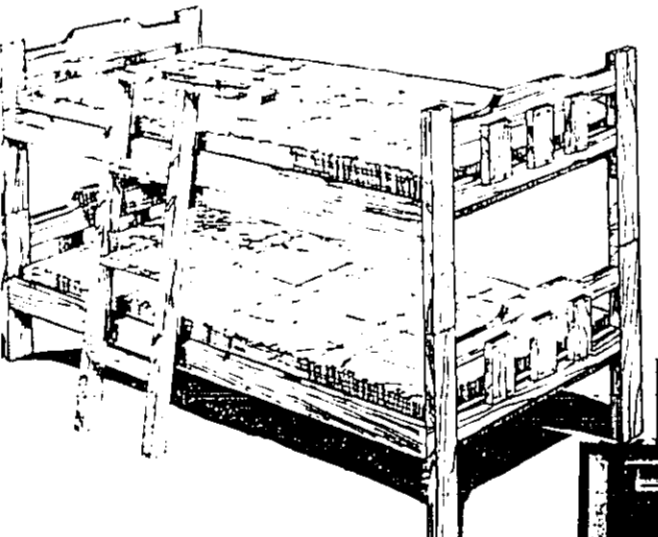
ALL WOOD - crafted from fine cabinet hard woods & Oak engraved wood products. High-pressure laminate table top retix stains. Super Bargain! Additional Side Chairs \$69 Each

ALL 5-PIECES reg \$599.95
\$499
OVAL TABLE
ARM CHAIR
MATCHING SIDE CHAIRS
MATCHING BUFFET/HUTCH \$399

Richly-grained, high-pressure laminate table top and old-fashioned bow-back chairs are finished in a warm Honey Pine color. Matching China echoes the same quality construction and features lots of storage/display space.

Super Sale Bargain!
SAVE \$100.95
TABLE & 4 CHAIRS
OR BUFFET HUTCH

your choice
\$299
Regular \$399.95 each



Bunk Beds
\$269



Desks
Your Choice
\$269

