



COMMISSIONERS LOOK OVER PLANS FOR NEW JAIL FOR TYLER COUNTY. OFFICIALS ESTIMATE THE NEW JAIL WILL COST APPROXIMATELY \$1,911,000.

# Jail Financing Eyed

The Tyler County Commissioners' Court held a special meeting on Tuesday, Oct. 29, to consider a report from the County Financial Advisor, George Cooper, concerning the new jail. According to Cooper, there are three things which must be done before financing can begin:

1. The county needs to have an idea of how much the project will cost by preparing a certified statement from the engineers and architects as to the amount needed to build the jail.
2. The plans must meet specifications of the Jail Standards Commission.
3. And the Court must give two weeks notice of intent to issue certain obligations bonds to produce audited financial reports for the money to finance the project.

After all this is done, the County Auditor's office will have to produce audited financial reports for the past three years. The Commissioners also were able to study the preliminary architect plans for the building, which will hold up to 40 prisoners when completed. The new site will be on Highway 69 north across from Knapp Ford. After a few adjustments in the layout of the building, the commissioners seemed pleased with the designs presented.

Also, the County Auditor's office will have to produce audited financial reports for the past three years. The Commissioners also were able to study the preliminary architect plans for the building, which will hold up to 40 prisoners when completed. The new site will be on Highway 69 north across from Knapp Ford. After a few adjustments in the layout of the building, the commissioners seemed pleased with the designs presented.

# Sturrock Chides Voters

"Four years ago only 5 percent of Tyler County voted on the amendments proposed. Two years ago, when there were elections held, 65 percent of the registered voters went to the polls. With this kind of response, Tyler County is allowing

Houston and the other large cities to restructure our constitution for us," says Tyler County Judge Allen Sturrock. Sturrock was speaking at the Deep East Texas Development Association meeting in Woodville Friday, Oct. 25. He also advised the mem-

bers of a letter the county received from Representative Charles Wilson vowing his support for a proposed bill, House Resolution 3530, which would revise the statute which states the county must pay overtime to county employees rather than give

## THE TYLER COUNTY BOOSTER

Trade at Home

3 Sections 40 Pages Vol. 35 No. 4

“TELL 'EM YOU SAW IT IN THE TYLER COUNTY BOOSTER”

October 31, 1985  
Woodville, Texas 75797

SERVING TYLER COUNTY SINCE 1930

# Blake Endorses All Amendments

By Mary McGowan

State Senator Roy Blake of Nacogdoches was guest speaker at the Deep East Texas Development Association's regular monthly meeting held Friday, October 25, at the Woodville Inn. Blake presented members with a brief explanation of the amendments which are to be voted on in the upcoming November election.

Blake indicated the first amendment might directly affect Tyler County by giving the Water Development Board enough money to help get the Rockland Lake and Dam Project underway. This amendment gives \$960 million in additional money to the state through Texas Water Development Bonds with which to create special funds for water conservation, development and quality enhancement.

Blake, and adds, "in 20 years, Texas will have over 21 million people. So we must do something now to provide for that time. Texas is one of two states which proposes a plan to solve its water problems," reports Blake. The Senator also states that passage of

and sewer lines by letting the city place a lien on their property. Passage of the fourth amendment would allow school districts to use money received from the sale of land dedicated to the permanent school fund to be used to purchase other land for that fund.

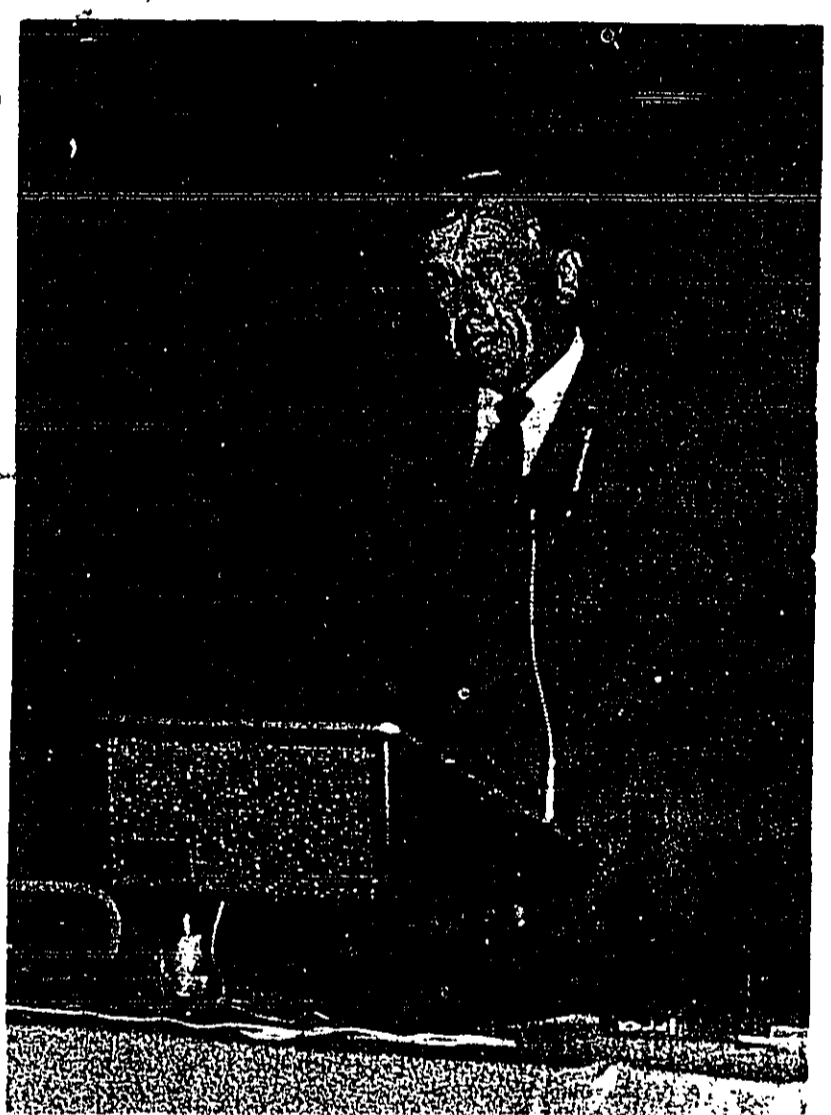
Amendment 7 deals only with Chambers County. The eighth proposed amendment provides \$500 million in additional bonding authority for the veterans housing assistance program and to authorize the legislature by law to define an eligible veteran for the purpose of those programs.

Amendment 10 authorizes the issuance of general obligation bonds to provide financing assistance for the purchase of farms and ranch lands.

Amendment 11 is the amendment relating to the manner in which a person is charged with a criminal offense and to certain requirements applicable to state writs and processes. This amendment would eliminate the criminal's appeal of a verdict due to an error in the indictment.

Amendment 13 provides the reappointment of judicial districts of the state and provides for the administration and jurisdiction of constitutional courts.

Amendment 14 does not apply to Tyler County. In other business, reports from the various offices of DETDA included the Forrest Service stating 1985 was the worst year on record for beetles with the hope that this is the last year of the infestation cycle.



SUPPORTS ALL AMENDMENTS... State Senator Roy Blake of Nacogdoches is shown at podium during Deep East Texas Development Association Meeting held at the Woodville Inn Friday. Blake placed special emphasis on the first two amendments which deal with water resources for the state.

# Lawyer Charges 'Kangaroo Court'

By Annabeth Willis

Calling a halt to the kangaroo court with Adolph Hryhorchuk in front of the Warren District School District Board of Trustees opted to reschedule the hearing until a later date.

The October 24, 1985 hearing had an unexpected ending when the board decided to take the suggestion made by Hryhorchuk's attorney, Larry Watts of Houston, to have the hearing before an "impartial" board.

Watts, refusing to let board members in the new Board will be made up of one person of the District, choosing and one person of Hryhorchuk's choosing. This is not a hearing as set for either November 13, 14, or 15, and whatever decision is made by the three-person board will stand as if made by the actual Warren Board members.

When questioned as to the reasoning behind the decision, Board President Harold Davis said, "We took the advice of our District's attorney, Larry Watts, who informed us that the Board's decision was in favor of the hearing. According to Smithers, the

board was finished once and for all. Hutton felt that having the hearing before an impartial board would help our case. If it goes to a court of law, Davis said he had no idea who the District's representative on the new board would be nor when the person would be chosen. The District, already paying two attorneys, will bear the expense of the new board.

Amendment 10 authorizes the issuance of general obligation bonds to provide financing assistance for the purchase of farms and ranch lands.

Amendment 11 is the amendment relating to the manner in which a person is charged with a criminal offense and to certain requirements applicable to state writs and processes. This amendment would eliminate the criminal's appeal of a verdict due to an error in the indictment.

Amendment 13 provides the reappointment of judicial districts of the state and provides for the administration and jurisdiction of constitutional courts.

Amendment 14 does not apply to Tyler County. In other business, reports from the various offices of DETDA included the Forrest Service stating 1985 was the worst year on record for beetles with the hope that this is the last year of the infestation cycle.



WOMEN VISITING FRIENDS IN TYLER COUNTY... A group of women are seen visiting friends in Tyler County. The photo shows a line of women standing outdoors, possibly at a public event or a hearing.

# Bond Set In Rape Arrest

By Mary McGowan

A \$15,000 bond was set by Precinct 2 Judge Orady James in an alleged sexual assault involving a 12-year-old girl.

Sheriff's office has arrested one person in connection with a burglary of a Warren resident, H.K. Pitts of Warren came home to find his house being burglarized last Thursday, Oct. 24. There was about \$500 in property damage done and one item reported stolen.

The suspect, charged with burglary of a habitation and a building lists his name as William Joseph Morgan, but refused to give an address, according to Chief Deputy Wade Skinner. The Sheriff's Office feels this name may be an alias. According to Sheriff Leon Fowda Brasher.

lter, Morgan has admitted he was convicted of a crime in Houston under the name of Thomas B. Wolfe.

Bond for both offenses has been set at \$30,000 by Justice Wanda Brasher.

# Form Seat Belt Habit Now!

MARY MCGOWAN

Have you formed the seat belt habit yet? Well, you have one more month of a 90-day grace period left in which to do so. Beginning Dec. 1, citations will be issued to those not buckling up.

Jim Miller, a D.P.S. officer from Woodville, says, "More people seem to be wearing their belts, judging from observations I'm making around here. Miller says that he has had a habit of not wearing his seat belt, but in a few

years I think everyone will just automatically reach for their safety belt when getting in their cars." He adds the D.P.S. officers verbally ask the people they stop to reflect on the law is in effect and they should be wearing the belt if they aren't already.

Locally, Miller reports he hasn't had any complaints from drivers who don't wear their safety belts. Fines for the offense will range from \$25 to \$50. Those people re-

quired by law to wear safety belts are all drivers and front seat passengers riding in cars or trucks (¾ ton or less) equipped with safety belts. In addition, children two to four years of age whether in the front or back seat must be strapped in and children under two years of age must be secured in a federally approved child safety seat. If the unbelted person is under 15 years of age, the driver will be cited. Those over 15 are responsible for their own belts. There are a few exceptions to this law. Anyone possessing a written statement from a licensed physician stating that for medical reasons, the person is unable to wear a safety belt, will be exempt. But the letter must be produced at the time the person is stopped. Also, U.S. Postal Service employees performing mail deliveries.

# PERSONAL & FAMILY accent on tyler county



## AARP To Meet Monday

The Woodville Area Chapter #792 of AARP will meet at 10 a.m. on Monday, November 4, at the Lions Den on Highway 190 E. AARP is the largest private, non-profit, non-partisan membership organization in the world with 19 million members. All persons over 50 years of age in Tyler County are invited to come to the meeting and participate in the activities of both the local and national organization. In addition to the partial scholarships awarded to nursing students, Melinda Smart and Melody Padilla last month, the chapter has been able to have the piano at the Lions Den repaired and tuned as another community service. President Harry Crow hopes that all who use the Lions Club will enjoy the return of the "gone but not forgotten" notes. Program Chairman Jean Klock has arranged for a program on Monday to give information about the 1986 Silver Haird Legi- slature. Representative Jerry Clark of Buna was one of the sponsors of the bill passed by the 69th Texas Legislature creating the first Silver Haird Legislature ever held in Texas. Rules for those wishing to become candidates and for elec- tions have been final- ized by the Area Agency on Aging. Steering Committee, Judge Allen Sturrock, Commissioner Made Riley, and Jane Reynolds, AARP State representative Tyler County, are on the committee. After the program, the business meeting will include the election of officers for 1986. An

optional covered dish luncheon will conclude the meeting.

Enter The Booster's Football Contest See Page 4 & 5 A

## Ortiz To Speak On "Beginning Novel Structure"

The Romance Writers of America will hold a meeting with author November 4th at 7:30 p.m. at the book store. Book novel structure. Rom Enora Ortiz will speak on the beginning meeting will be held on

## Shopping With Diane

By Diane Sinton

ATTENTION, SHUTTER BUGS! Fuji products are now in stock at Bob's Prescription, 1010 West Bluff. In addition to 35 mm print and slide film (including the new 1600 ASA), 110, and disk film, Bob is carrying Fuji cameras and accessories. The Fuji DL-200, touted as a "unique world's first" in 35 mm camera design, is one of the models in stock.

The all new Fuji DL-200 not only offers Fuji's exclusive drop in loading but adds another innovative feature: film prewind for exposing and counting frames in reversed order. The frame counter always shows what's left in a roll. The DL-200 also offers auto film speed setting, auto focus with memory, auto exposure, motorized film advance and a built-in flash that fires automatically when light levels get to low.

## Local Haven For Wildlife

Hungry birds and animals may soon be passing the word along the wildlife grapevine that the welcome mat is always out at 704 Myrtle Street in Woodville home of Kitty and Howard Peacock. The Peacock property has just been registered as a certified Backyard Wildlife Habitat by the National Wildlife Federation as a link in its nationwide network of mini-refuges for wildlife in residential neighborhoods.

Steps taken by the Peacocks to attract wildlife include planting 50 trees and shrubs to provide nesting sites and a nesting place for wildlife. They also supply several watering stations for birds and small mammals.

Other concerned residents who would like to encourage wildlife to nest and feed in their yards should send for a free Backyard Wildlife Habitat Informational package. Address your request to: National Wildlife Federation, Backyard Wildlife Habitat, 1412 16th Street, N.W., Washington, D.C. 20036.

## Cruse Army Recruiter

Sergeant Wayne Cruse, son of Mr. and Mrs. James Cruse of Hillister, Texas, has been assigned as an Army Recruiter to the U.S. Army Recruiting Station at 701 Northwest Avenue, El Dorado, Ark. Cruse has been in the Army 12 years and served at Fort Sill, Okla., Fort Cavazos, Colo., The Germany and in Panama, before coming to El Dorado. Cruse and wife Rhonda have a daughter, Darylle, age 10.

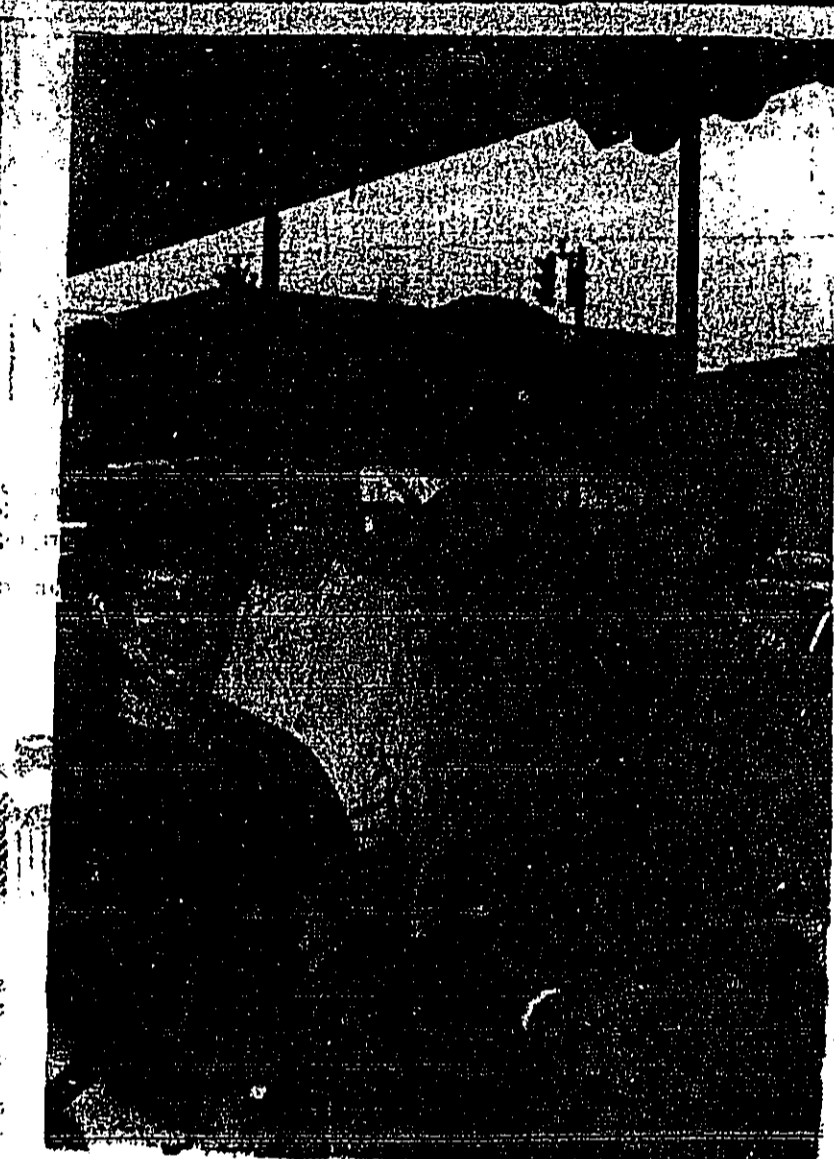
NOTE: The report must be signed by an authorized official and attested by not less than three directors other than the official signing the report. I/We, the undersigned official(s), do hereby declare that this Report of Condition has been prepared in conformance with official instructions and is true to the best of my knowledge and belief.

PUBLICATION COPY CONSOLIDATED REPORT OF CONDITION (Including Domestic and Foreign Subsidiaries) (Dollar Amounts in Thousands)

LEGAL TITLE OF BANK	CITY	COUNTY	STATE	ZIP CODE	CLOSE OF BUSINESS DATE
Citizens State Bank	Woodville, Texas	Tyler	Texas	75979	September 30, 1985

ASSETS	LIABILITIES
1. Cash and balances due from depository institutions	1. Deposits
2. Loans and advances	2. Federal funds purchased and securities sold under agreements to repurchase
3. Investments in U.S. government securities	3. Federal funds sold
4. Investments in U.S. government securities	4. Federal funds purchased and securities sold under agreements to repurchase
5. Investments in U.S. government securities	5. Federal funds sold
6. Investments in U.S. government securities	6. Federal funds purchased and securities sold under agreements to repurchase
7. Investments in U.S. government securities	7. Federal funds sold
8. Investments in U.S. government securities	8. Federal funds purchased and securities sold under agreements to repurchase
9. Investments in U.S. government securities	9. Federal funds sold
10. Investments in U.S. government securities	10. Federal funds purchased and securities sold under agreements to repurchase
11. Investments in U.S. government securities	11. Federal funds sold
12. Investments in U.S. government securities	12. Federal funds purchased and securities sold under agreements to repurchase
13. Investments in U.S. government securities	13. Federal funds sold
14. Investments in U.S. government securities	14. Federal funds purchased and securities sold under agreements to repurchase
15. Investments in U.S. government securities	15. Federal funds sold
16. Investments in U.S. government securities	16. Federal funds purchased and securities sold under agreements to repurchase
17. Investments in U.S. government securities	17. Federal funds sold
18. Investments in U.S. government securities	18. Federal funds purchased and securities sold under agreements to repurchase
19. Investments in U.S. government securities	19. Federal funds sold
20. Investments in U.S. government securities	20. Federal funds purchased and securities sold under agreements to repurchase
21. Investments in U.S. government securities	21. Federal funds sold
22. Investments in U.S. government securities	22. Federal funds purchased and securities sold under agreements to repurchase
23. Investments in U.S. government securities	23. Federal funds sold
24. Investments in U.S. government securities	24. Federal funds purchased and securities sold under agreements to repurchase
25. Investments in U.S. government securities	25. Federal funds sold
26. Investments in U.S. government securities	26. Federal funds purchased and securities sold under agreements to repurchase
27. Investments in U.S. government securities	27. Federal funds sold
28. Investments in U.S. government securities	28. Federal funds purchased and securities sold under agreements to repurchase
29. Investments in U.S. government securities	29. Federal funds sold
30. Investments in U.S. government securities	30. Federal funds purchased and securities sold under agreements to repurchase
31. Investments in U.S. government securities	31. Federal funds sold
32. Investments in U.S. government securities	32. Federal funds purchased and securities sold under agreements to repurchase
33. Investments in U.S. government securities	33. Federal funds sold
34. Investments in U.S. government securities	34. Federal funds purchased and securities sold under agreements to repurchase
35. Investments in U.S. government securities	35. Federal funds sold
36. Investments in U.S. government securities	36. Federal funds purchased and securities sold under agreements to repurchase
37. Investments in U.S. government securities	37. Federal funds sold
38. Investments in U.S. government securities	38. Federal funds purchased and securities sold under agreements to repurchase
39. Investments in U.S. government securities	39. Federal funds sold
40. Investments in U.S. government securities	40. Federal funds purchased and securities sold under agreements to repurchase
41. Investments in U.S. government securities	41. Federal funds sold
42. Investments in U.S. government securities	42. Federal funds purchased and securities sold under agreements to repurchase
43. Investments in U.S. government securities	43. Federal funds sold
44. Investments in U.S. government securities	44. Federal funds purchased and securities sold under agreements to repurchase
45. Investments in U.S. government securities	45. Federal funds sold
46. Investments in U.S. government securities	46. Federal funds purchased and securities sold under agreements to repurchase
47. Investments in U.S. government securities	47. Federal funds sold
48. Investments in U.S. government securities	48. Federal funds purchased and securities sold under agreements to repurchase
49. Investments in U.S. government securities	49. Federal funds sold
50. Investments in U.S. government securities	50. Federal funds purchased and securities sold under agreements to repurchase
51. Investments in U.S. government securities	51. Federal funds sold
52. Investments in U.S. government securities	52. Federal funds purchased and securities sold under agreements to repurchase
53. Investments in U.S. government securities	53. Federal funds sold
54. Investments in U.S. government securities	54. Federal funds purchased and securities sold under agreements to repurchase
55. Investments in U.S. government securities	55. Federal funds sold
56. Investments in U.S. government securities	56. Federal funds purchased and securities sold under agreements to repurchase
57. Investments in U.S. government securities	57. Federal funds sold
58. Investments in U.S. government securities	58. Federal funds purchased and securities sold under agreements to repurchase
59. Investments in U.S. government securities	59. Federal funds sold
60. Investments in U.S. government securities	60. Federal funds purchased and securities sold under agreements to repurchase
61. Investments in U.S. government securities	61. Federal funds sold
62. Investments in U.S. government securities	62. Federal funds purchased and securities sold under agreements to repurchase
63. Investments in U.S. government securities	63. Federal funds sold
64. Investments in U.S. government securities	64. Federal funds purchased and securities sold under agreements to repurchase
65. Investments in U.S. government securities	65. Federal funds sold
66. Investments in U.S. government securities	66. Federal funds purchased and securities sold under agreements to repurchase
67. Investments in U.S. government securities	67. Federal funds sold
68. Investments in U.S. government securities	68. Federal funds purchased and securities sold under agreements to repurchase
69. Investments in U.S. government securities	69. Federal funds sold
70. Investments in U.S. government securities	70. Federal funds purchased and securities sold under agreements to repurchase
71. Investments in U.S. government securities	71. Federal funds sold
72. Investments in U.S. government securities	72. Federal funds purchased and securities sold under agreements to repurchase
73. Investments in U.S. government securities	73. Federal funds sold
74. Investments in U.S. government securities	74. Federal funds purchased and securities sold under agreements to repurchase
75. Investments in U.S. government securities	75. Federal funds sold
76. Investments in U.S. government securities	76. Federal funds purchased and securities sold under agreements to repurchase
77. Investments in U.S. government securities	77. Federal funds sold
78. Investments in U.S. government securities	78. Federal funds purchased and securities sold under agreements to repurchase
79. Investments in U.S. government securities	79. Federal funds sold
80. Investments in U.S. government securities	80. Federal funds purchased and securities sold under agreements to repurchase
81. Investments in U.S. government securities	81. Federal funds sold
82. Investments in U.S. government securities	82. Federal funds purchased and securities sold under agreements to repurchase
83. Investments in U.S. government securities	83. Federal funds sold
84. Investments in U.S. government securities	84. Federal funds purchased and securities sold under agreements to repurchase
85. Investments in U.S. government securities	85. Federal funds sold
86. Investments in U.S. government securities	86. Federal funds purchased and securities sold under agreements to repurchase
87. Investments in U.S. government securities	87. Federal funds sold
88. Investments in U.S. government securities	88. Federal funds purchased and securities sold under agreements to repurchase
89. Investments in U.S. government securities	89. Federal funds sold
90. Investments in U.S. government securities	90. Federal funds purchased and securities sold under agreements to repurchase
91. Investments in U.S. government securities	91. Federal funds sold
92. Investments in U.S. government securities	92. Federal funds purchased and securities sold under agreements to repurchase
93. Investments in U.S. government securities	93. Federal funds sold
94. Investments in U.S. government securities	94. Federal funds purchased and securities sold under agreements to repurchase
95. Investments in U.S. government securities	95. Federal funds sold
96. Investments in U.S. government securities	96. Federal funds purchased and securities sold under agreements to repurchase
97. Investments in U.S. government securities	97. Federal funds sold
98. Investments in U.S. government securities	98. Federal funds purchased and securities sold under agreements to repurchase
99. Investments in U.S. government securities	99. Federal funds sold
100. Investments in U.S. government securities	100. Federal funds purchased and securities sold under agreements to repurchase



## Woodville Inn-Invitational Finishers "All-Wet"

Dedicated golfers braved an incoming front to finish the Woodville Inn-Invitational October 26-27 at Deer Trail Country Club. It was a cold, wet, dark finish, but they did to an excellent display of sportsmanship and shooting skills, which included a tree-hanger at one point, by Scott Tolbert of Woodville. The Scramble/Best Bats event was won by Rolf Eilbo and Jim Lorton at 152. John Coker and Lonnie Grissom took second place in the Championship Flight with 154. Ota Fortenberry and Thomas Fortenberry



John Coker And Lonnie Grissom

## Barlows Celebrate 61st Anniversary

A 61st Wedding Anniversary reception will be held on Sunday, November 3, 1985 for Mr. & Mrs. Rogie Barlow at their home. They were married on November 2, 1924. The Barlows have four children. They are Mrs. Daisy Bell Jordan of Woodville, Mr. Norman M. Barlow of Huntington, Mrs. Leona Taylor (deceased) of Beaumont and Mr. Sterling Barlow of Dorette, Mr. and Mrs. Barlow also have 11 grandchildren and 10 great grandchildren. All friends and relatives are invited through the press.

### Business & Service Directory

Call 283-2569

## Photography Club To Meet November 5

Meet other photographers in Woodville at the Tuesday, Nov. 5 program, which convenes at 7 p.m. at the Woodville Inn. Use of creative filters and the subject of this month's program, which convenes at 7 p.m. at the Woodville Inn.

### MOST ITEMS 1/2 PRICE Thursday-Saturday

Country Miss Boutique 283-5582 715 S. Magnolia

### EAT! EAT! EAT!

We Are Now Serving A Plate Lunch Choice Of: (1) Meat (2) Vegetables, Salad, Dessert ALL FOR \$3.50 Thursday, Friday, Saturday ORIGINAL GIFT ITEMS

### THE MIDDLE BUSTER

GRAND OPENING CHARGED STEAKS & PITTIQUES

## Miss Beaumont Competition Now Accepting Entries

The first step in becoming Miss Beaumont could be by competing in the 1986 Miss Beaumont Junior Miss Beaumont, Little Miss Beaumont, and Miss Beaumont Scholarship Pageant Association, Inc. have announced that applications for entrants, ages 4-26, are now being accepted. Entrants are not required to be residents of Beaumont.

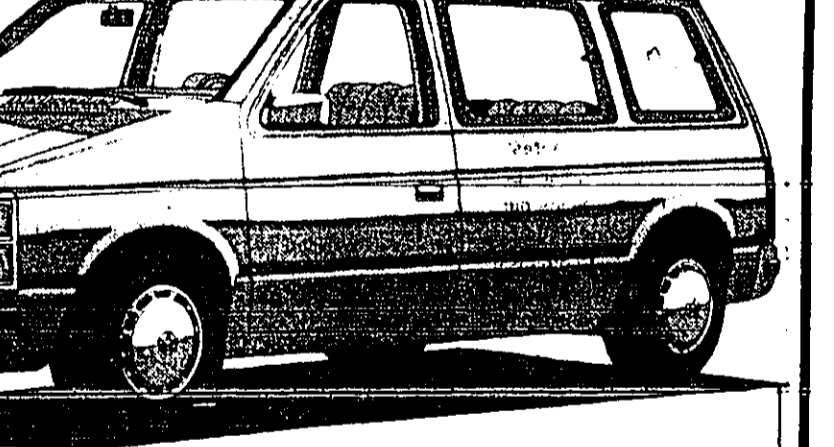
### Hints For Homeowners

Gas Saves Cash State utility and an abundant supply make natural gas the preferred energy source for many homeowners. A 20 percent surplus supply of natural gas in the U.S. and a glut in the Canadian supply have pushed natural gas prices down. Though the U.S. now imports less than five percent of the gas it uses, this move by Canada is expected to further lower U.S. prices and help assure a growing natural gas supply for Americans.

### Thomas-Loden Attend FTD Xmas. Show

Both Thomas and Loden are designers and decorators. They will be at the Christmas Show at the Woodville Inn on November 5th. They will be showing their latest designs and decorations.

## GET BIG SAVINGS IN '86 WITH DISCOUNT OPTION PACKAGES!



PLYMOUTH VOYAGER SE DISCOUNT CONVENIENCE PACKAGE: Light Package • Deluxe Intermittent Wipers • AM Stereo/FM Stereo • Electronic Speed Control • Power Liftgate Release • Luxury Steering Wheel • Floor Mats • Deluxe Sound Insulation • 500-Amp Battery • Dual Outside Remote Mirrors • And more!

YOU SAVE \$125

### CHRYSLER-PLYMOUTH HAS THE CAR FOR YOU!

COME IN TODAY! GET THE CAR FOR YOU AND SAVE!

283-8151 LARRY TREST CHRYSLER CENTER, INC. HWY 69 S. WOODVILLE 283-8152





# Colmesneil Defeats Chester

The Colmesneil Bulldogs won the Tyler County Class A Championship Friday night by manhandling the Chester Yellowjackets by a score of 35 to 8.

Colmesneil won the game and the statistics until early in the 4th quarter when they finally put the score out of reach for Chester.

The tough little Yellowjackets didn't fold up but came right back and drove 40 yards down-field before a pass interception by the Bulldogs stopped them.



END OF THE ROAD...Buck Hood #33 of Chester goes for short yardage against Colmesneil Friday night. Buck is tackled by an unidentified Bulldog. Jerry Dubose #24 and Curtis Daniel #90 of Colmesneil are in hot pursuit. Another unidentified Bulldog had him shut off at the pass.

## Game Warden Applications Accepted

AUSTIN...The Texas Parks and Wildlife Department is now accepting applications for the next Game Warden Training Academy which will convene in Austin during the summer of 1986.

## Eagles Whip Huntington

The Huntington Bulldogs were defeated by the Eagle football team in a game that was a defensive struggle.

## Bulldog Growls

The Huntington Bulldogs were defeated by the Eagle football team in a game that was a defensive struggle.



HOME...Ginger McPherson...The students of Warren High School elected Ginger McPherson Homecoming Queen of the 1985-86 school year.

## Warriors Rose To Kountze

The Warren Warriors intercepted a pass and drove 40 yards for a touchdown in a game against Kountze.

## Colmesneil Honor Roll

- Don Allen Young
SEVENTH GRADE
A's and B's
Sharon McWilliams
Bryan Spears

## Spurger Menu

- Monday
Hot Tamale
Baby Lima Beans
Green Salad
Bulldog Cobbler
Milk

## Eagles Nest

The Woodville cedure. The classes ap... Eagles won their second precatid him very district game with the much and would like to think him.

## Warren Honor Roll

- GRADE 6
A's and one B
Lex Cude
Debbie Lavergne
Gwendolyn Lewis

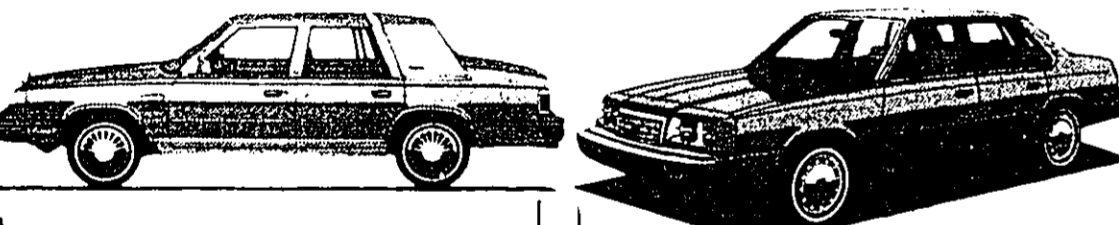
## Colmesneil Menu

- BREAKFAST
Monday
Sausage Biscuit
Applesauce
Milk

## Woodville Intermediate Honor Roll

- 4th GRADE
A HONOR ROLL
Leslie Boykin
Kelsha Brazil
Tessa Cards

# GET BIG SAVINGS IN '86 WITH DISCOUNT OPTION PACKAGES!



- CHRYSLER NEW YORKER DISCOUNT TURBO PACKAGE INCLUDES:
• Turbo Engine
• 2.7 liter engine
• Rear window defogger
• 160 mph top speed
• 100,000 mile warranty

PLUS, GET CHRYSLER'S 5 YEAR/50,000 MILE PROTECTION PLAN.

# CHRYSLER-PLYMOUTH HAS THE CAR FOR YOU!

8.6% FINANCING AVAILABLE NOW
COME IN TODAY! GET THE CAR FOR YOU AND SAVE!
283-8151 LARRY TREST 283-8152
CHRYSLER CENTER, INC.
May 69 S. Woodville

## Fishing Report

Fishing was good last week if you could fish like you wanted to. Boots Dean and I fished the preceding 12 months of Class B misdemeanor during the preceding six months.

## Hunting Report

The Warren girls are having a pretty good season this year. They have a good chance to be in the playoffs.

## Todd Hadnot

Todd Hadnot is currently playing football for the Kansas Wesleyan Coyotes.

## Fishing Report

Fishing was good last week if you could fish like you wanted to. Boots Dean and I fished the preceding 12 months of Class B misdemeanor during the preceding six months.

## Hunting Report

The Warren girls are having a pretty good season this year. They have a good chance to be in the playoffs.

## Todd Hadnot

Todd Hadnot is currently playing football for the Kansas Wesleyan Coyotes.

## Colmesneil FHA Election

October 22, the Colmesneil 1985-86 FHA officers were installed.

## Woodville Menu

- Monday
Mini Submarine Sandwich
Tossed Salad w/ Dressing
Tater Tots w/ Catapana
Peanut Butter Cobbler
Milk

# Grammer's Grocery

W. Bluff Woodville 283-2520
We gladly accept Texaco, Visa, Master Card, American Express & Food Stamps.

- SPECIALS ARE GOOD FOR SEVEN DAYS
Oct. 30 thru Nov. 5
All Specials for Cash Only
16 oz. Dr. Pepper 2.19 + tax
Fryers .59 lb.
Heavy Beef Short Ribs for BBQ .99 lb.
Heavy Beef Chunks 3.59 lb.
Heavy Beef Brisket .99 lb.
Boneless Chuck Steak 1.99 lb.
Boneless Chuck Roast 1.89 lb.
Heavy Beef Chops 3# or more 1.89 lb.
Decker Pressed Ham 1.89 lb.
End Cut Pork Chops 1.59 lb.
Korn King Boneless Ham Whole 3.59 lb.
Wilson Boiled Ham 2.49 lb.
Hormel Pressed Ham 1.99 lb.
Wilson Loose Weiners 1.09 lb.
Eckrich Smoked Sausage 2.59 lb.
Hormel Sliced Bacon 3# or more 1.99 lb.
All 16 oz. Bottle Dr. Pepper product 45¢ plus tax
Dr. Pepper & / Up can drinks 2.09 plus tax
Pepsi 2 Liter 1.29 plus tax
Pepsi 6 pkgs. can drinks 2.09 plus tax
Pepsi 6 pkgs. 16 oz. 2.19 + tax or 45¢ each + tax
Santa Maria Milk, gal. 2.19
Borden's Milk, half gal. 1.59
Tropic Cup Milk, gal. 2.19
Borden's Orange Drink .89 gal.
Old Fashion Borden 1/2 gal. 1.99
Grade A Large Eggs doz. .79
Potatoes 8# bag 1.49

SOUTHWEST CONFERENCE FOOTBALL SATURDAY
This Week On KVLL
1490 am
Texas Tech At Texas
Nov. 2
7:12-40 p.m.
SOUTHWEST CONFERENCE

The Tyler County BOOSTER
Something For EVERYONE!!

# EDITORIAL PAGE THE TYLER COUNTY BOOSTER

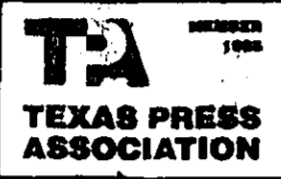
SERVING TYLER COUNTY SINCE 1930

(TSP) (45-5500)  
Published every Thursday by Tyler County  
Publishing Company, P. O. Box 248, Woodville,  
Texas 75797. Phone: 283-2569

Entered as second class matter of the Post  
Office in Woodville, Texas, December 11, 1930,  
under the act of Congress, March 2, 1879.  
Second class postage paid at Woodville, Texas.

Any erroneous reflection upon the character,  
standing or reputation of any person, firm or  
corporation which may appear in this newspaper  
will be gladly corrected upon being brought to  
the attention of the publisher.  
Postmaster: Please send form 3579 to P. O.  
Box 248, Woodville, Texas 75797.

Tyler County  
Polk, Angelina Jasper & Hardin Counties 6.50  
Other Texas Cities 7.50  
Other States 9.50  
Overseas 11.50



**JOHN F. MORRISON**  
PUBLISHER/EDITOR  
BOOKKEEPING DEPARTMENT  
GEO. WILLIAMS, Controller  
ADVERTISING DEPARTMENT  
Sylvia Horn, Director  
EDITORIAL DEPARTMENT  
John L. Tompkins, Editor-in-Chief  
Luther Lowery, Sports  
Scholarship Editor  
Annabeth Willis, Reporter  
Mary McGowan, Reporter/Photographer  
Diana Morrison,  
"Sidewalk Soundoff"  
PRODUCTION DEPARTMENT  
Diane Sitton, Composing  
Carol Edwards, Typesetter  
CIRCULATION DEPARTMENT  
Billie Martin, Director  
COUNTY COLUMNISTS  
Donette Hillster  
Sunny Dell  
Ivanhoe Warren  
Wildwood Rockland  
Mrs. W. T. Haynes  
A. T. Sturrock  
Wilma Owens  
Annabeth Willis  
Lou Verlander



There sure has been a lot of opinions expressed about the "no pass-no play" rule, now in effect in Texas schoolrooms.

Reward and punishment as we remember was a part of growing up, and failure at school probably excited the most stress on us, physically and mentally.

Teachers had a way of forecasting the way your class performance was trending, and parents were often alerted long before the report card reached their attention.

Would it surprise you to know that one of the awards we received for passing grades was coming to school early to patrol the street crossings? Every student street patrolman was given a uniform with white shirt, brown belt, a brass whistle, and an octagonal stop sign to escort kids across the intersection.

No pass, no play didn't have a chance by the time we got to high school. Parents just assumed if you didn't bring home a book home with you, you must be goofing off.

The Navy seemed to think that calculus would make us a better gunnery officer, something about fire control data for the ship's main batteries and some new fire control gear that was being installed.

Something For EVERYONE!!

The physiology course was supposed to be one of those "gut" courses. Easy to pass with no study. Except it was a trap laid on yours truly by a superclassman. Commonly known as "Sex 101," it was supposed to be a "riggle" because all the nursing students from New Haven General were taking the same course. Back in those days, Yale was an all-male student body, and the thought of having 100 young nurses-to-be in the same place was irresistible.

Of course, "Sex 101" turned out to be as mind boggling as Grey's Anatomy is to a first year medical student, and we found ourselves on the short end of grade points at mid-term. Being "out probation" at Yale was no picnic. We actually were restricted to dorm on other than class hours. Not only on a strict study regimen, but also detailed to grounds maintenance and the building repair department of the University. Spending a Saturday afternoon on a scaffold sixty feet off the ground made grinding the books a welcome relief.

And today, we know more about the anatomy of the human body than is really necessary, and find calculus solvable if not totally understood.

Further, your name was prominently displayed on the dorm bulletin boards as a "probie," right along side those who had made Dean's List, and if you don't think that was an additional incentive to get your grades up, you've missed the point up to now.

The Navy got in their ticks too with putting you on details such as polishing the firing range, and other chores better unmentioned.

No, we don't find a lot of sympathy with those who say passing grades shouldn't stand as the test as to whether you can play football, or bustle a trumpet.

So, we don't find a lot of sympathy with those who say passing grades shouldn't stand as the test as to whether you can play football, or bustle a trumpet.



J.P. Doodles

## Letters To The Editor

To the editor, Tyler County Booster

In your October 24 editorial you acknowledged that you are responsible for reporting local problems and commenting on local issues.

If one is willing to sign his name and address to a letter speaking out against them, then and only then may his opinion be voiced through this publication.

This group is infamous for its reprisals against known oppositors, while retaining the anonymity of its members.

In your refusal to print anonymous opinions, an interesting fact becomes apparent.

Although you are unwilling to take a stand against this gutless, iconoclastic group of masked hater-mongers, you are more than willing to identify those who will.

It is a sad state of affairs that our forefathers fought and died for the right to a free press only to have that freedom used as an invitation to be come oppressed.

Kenneth & Dale Garza  
213 S. Beech St.  
Woodville, Texas

## Editorial Water Plan O.K. Will Skies Clear?

THE TYLER COUNTY BOOSTER supports the passage of Constitutional Amendments one and two, "The Water Texas Plan" in next Tuesday's statewide election.

East Texans have looked askance at previous proposals for developing Texas water resources, regarding them as little more than give aways of East Texas water to our thirty Texas neighbors to the west.

This current plan however appears to have adequate safeguards to keep high quality water, our regions most precious undeveloped resource, destiny in East Texas's hands while at the same time possibly providing us the financial means to develop our water resources for our own needs and ends.

You see East Texans are now just beginning to face some of the water supply and water quality problems we have considered in the past as belonging to West Texas or Houston and Dallas. Whether it is area cities funding construction of new sewage treatment systems to solve water quality problems or the City of Woodville looking at construction costs of a water supply pipeline to Dam B, with federal funds literally drying up, the proposed \$980 million in additional Water Development Bonds and bond insurance programs provided in the new Texas Water Plan should be adequate incentive for us to treat this present plan much more seriously than we have the previous plans.

It is also in our interest, as the only region of the state to possess "water supply in excess of need" the foreseeable future" to see the bond moneys provided in this plan as a means to develop and use this "excess" as a valuable resource like East Texas lignite and timber which can be exported and used for our own purposes and to our own benefit.

So, East Texans, vote for Constitutional amendments one and two and not only keep East Texas water in East Texas but start using East Texas water for East Texas.

Blake [From Page 1A] The Texas Employment Commission reported Tyler County unemployment figures are down to 10.7 percent, the lowest since the beginning of the year. The county has the highest unemployment rate in the DDTDA region with 17.7 percent. Lake Jim Hays basin has had 37.14 inches of rain to date which is 7 inches below normal. The county was one drowning reported at Baylum this year.

### YOU and the LAW

PRESENTED BY THE STATE BAR OF TEXAS

Q. What happens when an older couple without a will? They had no children, but there are a number of nephews and sisters on both sides of the marriage.

A. At present, wills are not legally valid to pick up copyrighted material. Although we say that, our waves are free, the government does regulate radio and television transmissions. There will undoubtedly be attempts to license or tax their use by the producers of the programs you receive.

### SEARS HALLOWEEN & FLOOR SAMPLE SALE

STEREO	Reg. 204.99	Now 124.99	Save \$80
STEREO	Reg. 246.99	Now 149.99	Save \$97
19 IN. COLOR TV	Reg. 426.99	Now 276.99	Save \$150.00
VCR - BETA	Reg. 649.99	Now 249.99	Save \$400.00
VCR - VHS	Reg. 399.99	Now 299.99	Save \$100.00
MICROWAVE	Reg. 359.99	Now 259.99	Save \$100.00
MICROWAVE	Reg. 410.99	Now 299.99	Save \$110.00
SEWING MACHINE	Reg. 299.00	Now 183.00	Save \$116.00
WASHER	Reg. 317.99	Now 297.99	Save \$20.00
DRYER	Reg. 267.99	Now 247.99	Save \$20.00
WASHER	Reg. 447.99	Now 347.99	Save \$100.00
TRASH COMPACTOR	Reg. 320.99	Now 239.99	Save \$80.00
LOG SPLITTER - 10 ton	Reg. 519.99	Now 369.99	Save \$150.00
18CU-FT REFRIGERATOR	Reg. 669.00	Now 499.99	Save \$170.00
15 CU-FT UPRIGHT FREEZER	Now 344.99		
15 CU-FT FREEZER	Now 334.99		
SWIVEL ROCKER	Reg. 249.99	Now 179.99	Save \$70.00

Kids!! Come By For Halloween Treats & See The Halloween Pictures On Display Drawn By The 2nd Grade.

### Big Savings On All 85's

Left In Stock!

IROC Z-28

8.8% APR Available On Selected Models

5 Year Unlimited Miles Warranties Available On 85's

1985 C-10 PICKUP

Allison Chevrolet

837-2244 283-7605

### TYLER COUNTY NOTICE OF CALCULATION OF EFFECTIVE TAX RATE, ESTIMATED UNENCUMBERED FUND BALANCES, AND DEBT SCHEDULE

Barbara Tolbert, Tyler County

Estimated unencumbered fund balances as of 10/31/85:	
Farm to Market/Flood Control	\$ 126,344
Maintenance & Operation	\$ 17,212
Interest & Sinking	\$ -
General Fund	\$ 64,870
Maintenance & Operation	\$ -
Interest & Sinking	\$ -

### CALCULATIONS USED TO DETERMINE EFFECTIVE TAX RATE


Barbara Tolbert, Tyler County

DATA	Type of Tax	AMOUNT	Type of Tax	AMOUNT	Type of Tax	AMOUNT
1. 1984 Total tax levy from the 1984 tax roll		\$ 189,312.15		\$ 338,637.02		\$ 842,208.83
2. 1984 Tax rate (0.05 M&O and 0.05 M&O)		\$ -0.05 / \$100		\$ -0.05 / \$100		\$ -0.05 / \$100
3. 1984 Debt service (M&O) levy		\$ -0.00		\$ -0.00		\$ -0.00
4. 1984 Maintenance & Operation (M&O) levy		\$ 189,312.15		\$ 338,637.02		\$ 842,208.83
5. 1984 M&O taxes on property becoming exempt in 1985		\$ -0.00		\$ -0.00		\$ -0.00
6. 1984 M&O taxes used to regain lost 1983 levy		\$ 2,232.83		\$ 13,028.08		\$ 11,846.63
7. 1984 M&O taxes on taxable value lost because property is appraised at less than market value in 1985		\$ 14,239.31		\$ 14,239.31		\$ 14,239.31
8. 1985 Total taxable value of all property		\$ 424,831,162		\$ 424,831,162		\$ 424,831,162
9. 1985 Taxable value of new improvements added since Jan. 1, 1984		\$ 11,332,533		\$ 11,332,533		\$ 11,332,533
10. 1985 Taxable value of property annexed since Jan. 1, 1984		\$ -0.00		\$ -0.00		\$ -0.00
11. 1985 Tax levy needed to satisfy debt service (M&O)		\$ -0.00		\$ -0.00		\$ -0.00

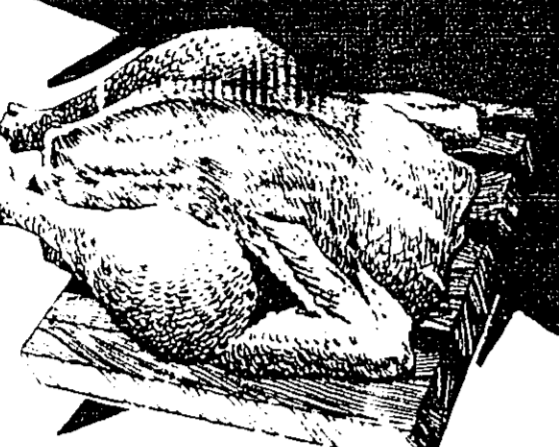
### II. CALCULATION

1. (A) 1984 Total tax levy (Data 1)	\$ 189,312.15	\$ 338,637.02	\$ 842,208.83
(B) Subtract 1984 debt service levy (Data 3)	\$ -0.00	\$ -0.00	\$ -0.00
(C) Subtract 1984 taxes on property no longer in unit (Data 5)	\$ -0.00	\$ -0.00	\$ -0.00
(D) Subtract 1984 taxes for exemptions (Data 6)	\$ -0.00	\$ -0.00	\$ -0.00
(E) Subtract 1984 taxes for productivity reduction (Data 7)	\$ 14,239.31	\$ 14,239.31	\$ 14,239.31
(F) Subtract 1984 taxes used to regain lost 1983 levy (Data 14)	\$ -0.00	\$ -0.00	\$ -0.00
(G) Adjusted 1984 M&O levy	\$ 167,835.01	\$ 311,369.62	\$ 756,132.08
2. (A) 1985 Total taxable value of all property (Data 8)	\$ 424,831,162	\$ 424,831,162	\$ 424,831,162
(B) Subtract 1985 value of new improvements (Data 9)	\$ 11,332,533	\$ 11,332,533	\$ 11,332,533
(C) Subtract 1985 value of property annexed since Jan. 1, 1984 (Data 10)	\$ -0.00	\$ -0.00	\$ -0.00
(D) Adjusted 1985 taxable value for M&O	\$ 413,518,561	\$ 413,518,561	\$ 413,518,561
3. (A) Divide the adjusted 1984 M&O levy (G) above by the adjusted 1985 taxable value for M&O (D) above	\$ 0.04 / \$100	\$ 0.07 / \$100	\$ 0.17 / \$100
(B) Multiply by \$100 valuation	\$ 4.00	\$ 7.00	\$ 17.00
(C) Effective M&O rate for 1985	\$ 0.04 / \$100	\$ 0.07 / \$100	\$ 0.17 / \$100





**BEEF BONELESS TOP SIRLOIN**  
WHOLE  
**BUTT** \$ **169**  
LB




**OSCAR MAYER MEAT OR BEEF**  
**BOLOGNA** 8 OZ \$1.09  
UNIVERSAL  
**HAMBURGER**  
**PATTIES** LB 99¢  
BEEF BONELESS  
**RUMP ROAST** LB \$1.69  
BEEF THIN CUT  
**BREAKFAST**  
**STEAK** FAMILY PKG LB \$1.69  
FRESH PORK SMALL SIZE  
**SPARE RIBS** LB \$1.59



**LIGHT CRUST**  
**FLOUR**  
ALL PURPOSE  
ENRICHED FLOUR



**WICK FOWLERS**  
2-ALARM  
**CHILI MIX** \$1.29  
REGULAR OR FAMILY STYLE  
STA FLO  
**LIQUID STARCH**  
64 OZ \$1.49

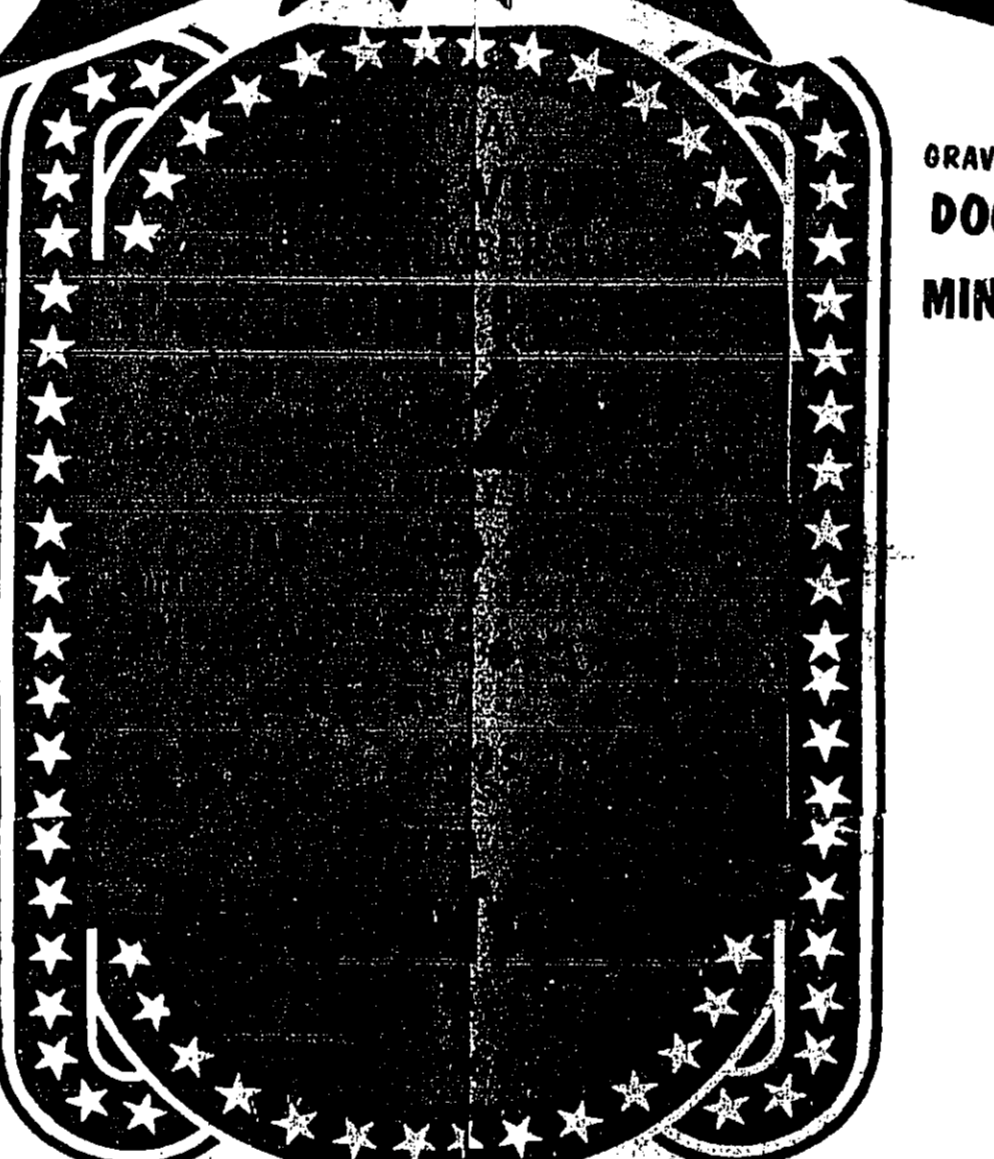


**GE SOFT WHITE LIGHT**  
**BULBS**  
4 PACK  
60-75 OR 100 WATT \$ **249**

**99**

**OLDE TYME**  
**CORNBREAD** **MIX**  
6 OZ  
**6/100**

**OSCAR MAYER MEAT OR BEEF**  
**BOLOGNA** 8 OZ \$1.09  
UNIVERSAL  
**HAMBURGER**  
**PATTIES** LB 99¢  
BEEF BONELESS  
**RUMP ROAST** LB \$1.69  
BEEF THIN CUT  
**BREAKFAST**  
**STEAK** FAMILY PKG LB \$1.69  
FRESH PORK SMALL SIZE  
**SPARE RIBS** LB \$1.59



**COFFEEMATE**  
NON DAIRY CREAMER 22 OZ \$2.99

**WICK FOWLERS**  
2-ALARM  
**CHILI MIX** \$1.29  
REGULAR OR FAMILY STYLE  
STA FLO  
**LIQUID STARCH**  
64 OZ \$1.49

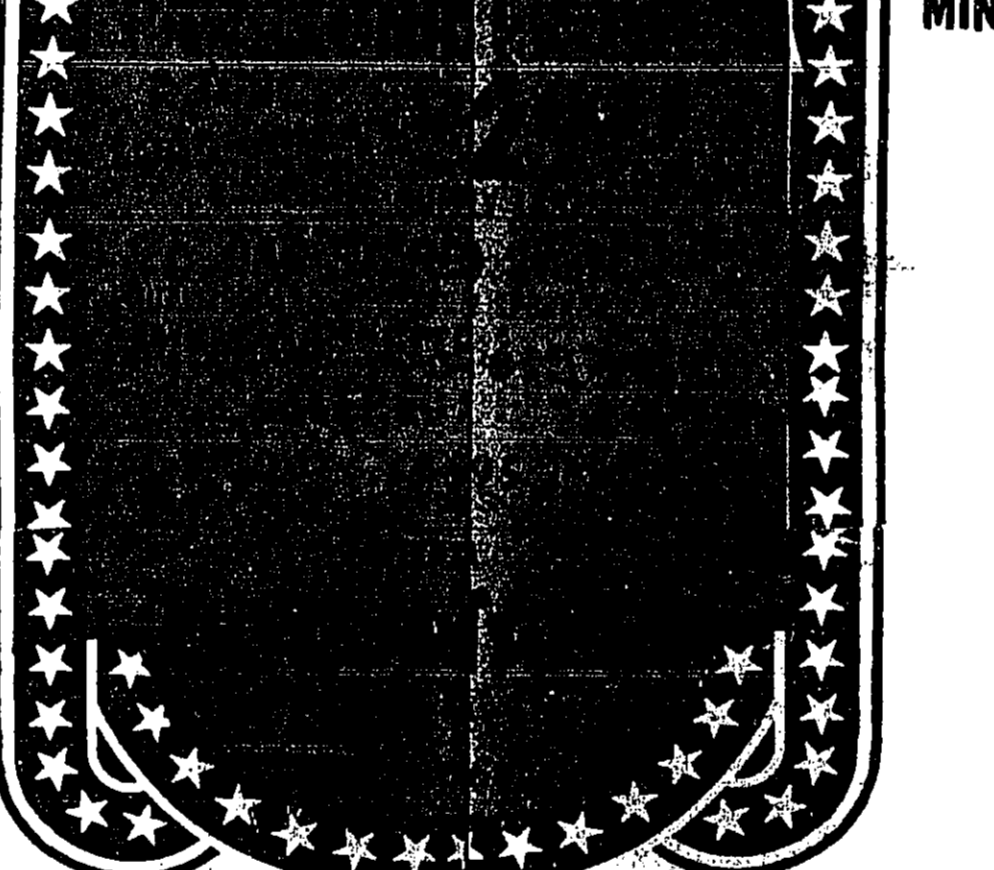
**GRAVY TRAIN**  
**DOG FOOD** 25 LB \$8.99  
**MINUTE RICE** 28 OZ \$1.89

**GEORGIAN**  
BATH **TISSUE**  
8 ROLL PKG  
\$ **199**

**GOOCH BLUE RIBBON**  
ALL MEAT **FRANKS**  
1 LB **89**¢



**OWENS**  
Country Style Sausage



**LIQUID STARCH**  
64 OZ \$1.49

**GRAVY TRAIN**  
**DOG FOOD** 25 LB \$8.99  
**MINUTE RICE** 28 OZ \$1.89

**LIGHT CRUST**  
**CORN MEAL** 5 LB 89¢

**ROTEL**  
TOMATOES &  
GREEN CHILIES  
10 OZ **2/89**¢

**STEAK**  
**249**

**OSCAR MAYER CATTO**  
**SALAMA** REG OR BEEF 8 OZ \$1.09

**LOUIS RICH**  
**CHOPPED HAM** 8 OZ \$1.29

**JUMBO FRYER**  
**BREAST** LB \$1.39

**JUMBO FRYER**  
**THIGH** LB \$1.17

**JUMBO FRYER**  
**DRUMSTIX** LB \$1.35

**JUMBO FRYER**  
**WINGS** LB 80¢

**FRESH**  
**GROUND BEEF** 3 LB OR MORE \$1.29

**FRESH CUT**  
**PORK STEAK**  
FAMILY PKG LB \$1.29

**BEEF BONELESS**  
**SIRLOIN**  
**TIP ROAST** LB \$1.69

**BEEF BONELESS**  
**SIRLOIN STEAK**  
LB \$1.99

**BEEF BONELESS**  
**SAVOY STEAK**  
FAMILY PKG LB \$1.79

**HARVEST OF FRESH DELICIOUS**  
**PRODUCE**

**GOLDEN RIPE**  
**BANANAS** 4 lbs \$1.00

**BAG RED DELICIOUS**  
**APPLES** 3 LB BAG 99¢

**SPICY RED**  
**RADISH** 3 PKG FOR 99¢

**WAX**  
**RUTABAGA** LB 39¢

**CALIFORNIA**  
**GREEN ONIONS** 3 BUNCH 99¢

**PLANTATION RIPE**  
**PINEAPPLE** EACH 99¢

**QUAKER INSTANT CRITS** 9.5 OZ 89¢

**RANCH STYLE**  
**BLACKEYE PEAS** 15 OZ 2/89

**OLD SMOKEHOUSE**  
**BAR-B-QUE SAUCE** 18 OZ \$1.39

**HI DRI**  
**TOWELS** BIG ROLL 2/100

**KRAFT**  
**CARAMELS** 14 OZ \$1.19

**DINTY MOORE**  
**CHICKEN OR BEEF**  
**STEW** 15 OZ 99¢

**MRS. TUCKERS**  
**SHORTENING** 42 OZ \$1.49

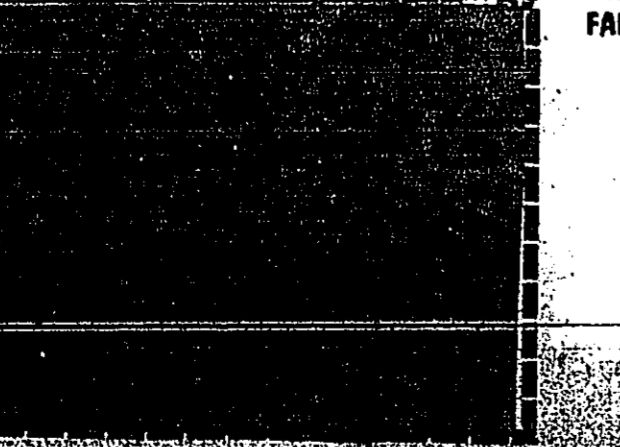
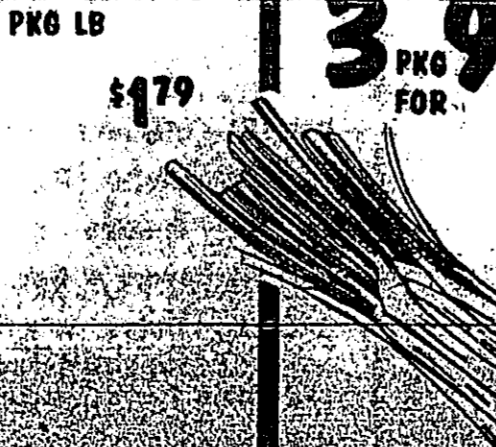
**KRAFT LIGHT OR REGULAR**  
**MAYONNAISE** 32 OZ \$1.89

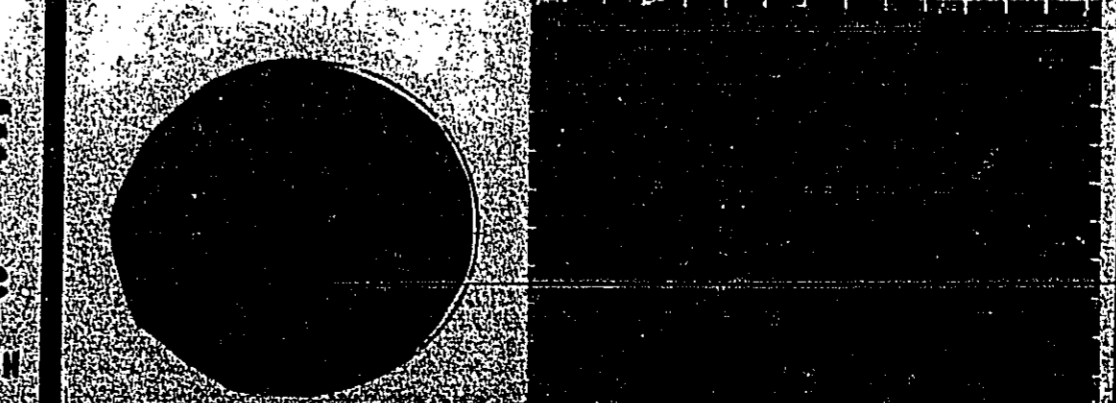
**7-8 VEGETABLE JUICE** 6 PACK \$1.29



**HORMEL**  
**VIENNA SAUSAGE**  
5 OZ **2/89**¢

**BEEF CUTLETS**  
FAMILY PKG \$ **179**  
LB



**KRAFT**  
**CARAMELS** 14 OZ \$1.19

**DINTY MOORE**  
**CHICKEN OR BEEF**  
**STEW** 15 OZ 99¢

**MRS. TUCKERS**  
**SHORTENING** 42 OZ \$1.49

**KRAFT LIGHT OR REGULAR**  
**MAYONNAISE** 32 OZ \$1.89

**7-8 VEGETABLE JUICE** 6 PACK \$1.29

**CUT**  
**GREEN BEANS**

**FRESH GROUND BEEF**  
**CHUCK**  
LB \$ **169**

**CARNATION HOT**  
**COCOA**  
RICH CHOCOLATE OR MILK CHOCOLATE 12'S \$ **139**





**you and the LAW**  
PRESENTED BY THE  
STATE BAR OF TEXAS

**Mums Have Long History**

Chrysanthemums can be traced as far back as the Ming dynasty. There are many historians claiming the Chrysanthemum originated in Japan as there are who claim China as the originating country for the Chrysanthemum. Many people think the flag of Japan displays the rising sun when in fact originally the yellow/red center of the flag of Japan was taken from a Spider Chrysanthemum.

Chrysanthemums moved from the far East to England where a lot of cross breeding took place by many hybridizers and the English Chrysanthemum was produced. The Chrysanthemum then migrated to the United States where today it is the largest year round pot plant grown.

There are many individual types of Chrysanthemums. Basically we have the Garden Hardy which grows outside in the landscape in mass plantings. Then we have the disbud which can be grown in flower beds or in pots. Basically the requirements of both types are the same. With in the two above mentioned types we have additional breakdowns such as: The Incurved (Football Type), The Spider, The Decorative, The Reflex, The Pompon, The Aemone, The Spoon, The Quill, and The Brush and Thistle. We have two methods of obtaining Chrysanthemums: plants-by cuttings and by seeds. When planting Chrysanthemums from seeds you will never obtain a true cultivar because of the cross pollination. The professional and show grower always plants anew from cuttings. This insures a true cultivar. On the Garden Hardy type they will repeat year after year from the same root system. When the Garden Hardy type has completed its blooming cycle and the leaves have turned brown cut them back to the ground level and much will return in the spring. Chrysanthemums like a slightly acid soil with a good organic base. Mums do not like wet feet but to do their best and reward you with good blooms in size and color you should never let them dry out. When planting Chrysanthemums never overcrowd them. Plant the mums on fifteen to eighteen inch centers. They will fill in the open area as they grow. Chrysanthemums need to be fed on a regular basis every two weeks to obtain the maximum in bloom and clarity in color. Remember mums as well as other plants have to have the fertilizer converted into a liquid. Some varieties of Chrysanthemums will bloom in the spring and again in the fall. The bloom for the Chrysanthemum is controlled by the amount of light. To make mums bloom in the fall you must give them a long day of light in the spring and one of short days in the fall. To make mums bloom in the spring you must give them a long day of light in the fall and one of short days in the spring.

**WALMART**



**Long Sleeve Dress Shirts**  
\*Polyester  
\*Collared  
\*Cuffed  
\*Long Sleeve  
\*Machine Washable  
\*Reg. 8.97  
**7.88**

**Mens Dress Slacks**  
\*Polyester  
\*Cuffed  
\*Machine Washable  
\*Reg. 13.84  
**11.88**

**Mens Fanny Collars**  
\*Polyester  
\*Machine Washable  
\*Reg. 9.94  
**8.44**

**Mens Thermal Underwear**  
\*Polyester  
\*Machine Washable  
\*Reg. 5.93  
**5.00**

**Junior & Misses Braxton® Stretch Jeans**  
\*Cotton/nylon/polyester  
\*Junior 8-13, Misses 8-18  
\*Reg. 15.94  
**13.54**

Walmart is local people working hard every day to save you money. **HERE'S PROOF!**

**Maternity Pants**  
\*Several Colors  
**7.54**  
Reg. 9.88

**Infant Sweat Sets**  
\*Polyester  
\*Machine Washable  
\*Reg. 6.93  
**5.88**

**General Electric AM/FM Cassette Stereo-To-Go**  
\*Cassette  
\*AM/FM  
\*Reg. 29.63  
**29.63**

**Rayovac Heavy Duty Batteries**  
\*AA  
\*Pack  
\*Reg. 2.67  
**2.27**

**FREE 78¢ Bic 2 Pack Lighters with FREE Pen**  
\*Limit 2  
**78¢**

**Poly-Fil® Traditional Battling**  
\*81X96 inches for making full size quilts. All polyester  
REG. 4.86  
**\$4.**

**Polyester Bed Pillow**  
\*Machine Washable  
\*Reg. 3.97  
**3.37**

**Mirror® 10 Inch Fry Pan**  
\*Aluminum  
\*Reg. 6.76  
**6.76**

**Black & Decker Jig Saw**  
\*No. 7543  
\*Reg. 15.47  
**14.43**

**Love My Carpet**  
\*20 Oz. \*Rug & room deodorizer \*Regular, soft scent, or floral fresh  
Reg. 1.87  
**1.58**

**Windmere® Gentle Curis® 24 Hairsetter**  
\*24 Cushioned surface rollers \*Fast light \*Ready to use \*Case with see-through cover \*No FS-24  
REG. 21.43  
**18.96**

**Miss Brock Hair Spray**  
\*9 Ounces \*Choice of formulas \*Limit 1  
**1.12**

**Storm Door Kit**  
\*Polyethylene \*Saves on fuel \*Convert screen in a storm door in minutes \*No 700 \*Reg. 88¢  
**74¢**

**Ruffies Lawn Bags**  
\*20 Count 8 Bushel capacity \*No. 18V107  
**2 FOR \$5**

**Save 25% 10 1/2 Inch Fluted Pot With Saucer**  
\*10 1/2 inches wide at the top \*Durable plastic \*Choice of colors \*Reg. 2.00  
**2 FOR \$3**

**Shop-Vac Wet or Dry Vacuum**  
\*Automatically shuts off when full \*No. 69001  
**48.44**

**V-Seal Weatherstrip**  
\*Blocks drafts around windows and doors \*Adhesive Backed \*Applies in minutes \*Choose from brown or white \*No. V-11W VS-13  
**1.97**

**Insulating Sponge Rubber**  
\*Self-adhesive \*Forms weather-tight seal around doors and windows \*No. SH-3  
\*Reg. 1.93  
**1.64**

**Clearol Hair Care**  
\*2 1/2 Ounces Conditioner \*2 1/2 Ounces Shampoo  
**1:18**

**Storm Door Kit**  
\*Polyethylene \*Saves on fuel \*Convert screen in a storm door in minutes \*No 700 \*Reg. 88¢  
**74¢**

**Ruffies Lawn Bags**  
\*20 Count 8 Bushel capacity \*No. 18V107  
**2 FOR \$5**

**Save 25% 10 1/2 Inch Fluted Pot With Saucer**  
\*10 1/2 inches wide at the top \*Durable plastic \*Choice of colors \*Reg. 2.00  
**2 FOR \$3**

**Shop-Vac Wet or Dry Vacuum**  
\*Automatically shuts off when full \*No. 69001  
**48.44**

**V-Seal Weatherstrip**  
\*Blocks drafts around windows and doors \*Adhesive Backed \*Applies in minutes \*Choose from brown or white \*No. V-11W VS-13  
**1.97**

**Insulating Sponge Rubber**  
\*Self-adhesive \*Forms weather-tight seal around doors and windows \*No. SH-3  
\*Reg. 1.93  
**1.64**

**Clearol Hair Care**  
\*2 1/2 Ounces Conditioner \*2 1/2 Ounces Shampoo  
**1:18**

**SPECIAL EVENTS**

**WEDNESDAY OCTOBER 30th (ALL DAY)**  
**WAL-MARTS 6th ANNIVERSARY**  
COME HAVE CAKE & COFFEE AND HELP MARK OUR 6th YEAR IN WOODVILLE

**THURSDAY OCTOBER 31st (ALL DAY)**  
**ASSOCIATES COSTUME HALLOWEEN DAY!!!**  
CHECK OUT OUR SPOOKY MUSIC AND CREATIVE HALLOWEEN ASSOCIATES IN THEIR COSTUMES

**SATURDAY NOVEMBER 2nd 6:30 P.M.**  
**WAL-MART FASHION REVUE**  
COME SEE JUDY COKER'S WOODVILLE HIGH HOME ECONOMIC STUDENTS TO MODEL WAL-MART FASHIONS

**Clear Vinyl Sheeting**  
\*12' x 12' \*Clear  
\*Standard size \*Reg. 3.64  
**3.00**

**Heavy Duty Vinyl Air Conditioner Cover**  
\*Strong and durable \*Light weight \*No. VAC-2 \*Reg. 4.00  
**2.00**

**Save 25% 4 Pack Storm Window Kit**  
\*Enough to do 4 windows \*Reg. 11.99  
\*Saves energy \*Light proof and air proof  
\*No. 704 \*Reg. 11.99  
**97¢**

**Save 20% Insulating Shrink Film Storm Window System**  
\*Stays cold \*Saves energy \*Easily applied to paint or varnished wood, aluminum or vinyl coated molding \*Easy to clean crystal clear film \*Double coated tape  
\*Reg. 1.84  
**1.64**

**PHOTO COUPON**  
Developing & Printing Color Print Film  
12 Exposures 24 Exposures  
15 Exposures 24 Exposures  
18 Exposures 24 Exposures  
24 Exposures 24 Exposures  
36 Exposures 24 Exposures  
48 Exposures 24 Exposures  
72 Exposures 24 Exposures  
108 Exposures 24 Exposures  
144 Exposures 24 Exposures  
180 Exposures 24 Exposures  
216 Exposures 24 Exposures  
252 Exposures 24 Exposures  
288 Exposures 24 Exposures  
324 Exposures 24 Exposures  
360 Exposures 24 Exposures  
400 Exposures 24 Exposures  
450 Exposures 24 Exposures  
500 Exposures 24 Exposures  
540 Exposures 24 Exposures  
576 Exposures 24 Exposures  
600 Exposures 24 Exposures  
648 Exposures 24 Exposures  
720 Exposures 24 Exposures  
756 Exposures 24 Exposures  
800 Exposures 24 Exposures  
864 Exposures 24 Exposures  
900 Exposures 24 Exposures  
936 Exposures 24 Exposures  
972 Exposures 24 Exposures  
1000 Exposures 24 Exposures  
1080 Exposures 24 Exposures  
1152 Exposures 24 Exposures  
1200 Exposures 24 Exposures  
1260 Exposures 24 Exposures  
1320 Exposures 24 Exposures  
1368 Exposures 24 Exposures  
1440 Exposures 24 Exposures  
1500 Exposures 24 Exposures  
1560 Exposures 24 Exposures  
1620 Exposures 24 Exposures  
1680 Exposures 24 Exposures  
1728 Exposures 24 Exposures  
1800 Exposures 24 Exposures  
1872 Exposures 24 Exposures  
1920 Exposures 24 Exposures  
1980 Exposures 24 Exposures  
2016 Exposures 24 Exposures  
2070 Exposures 24 Exposures  
2124 Exposures 24 Exposures  
2160 Exposures 24 Exposures  
2200 Exposures 24 Exposures  
2250 Exposures 24 Exposures  
2280 Exposures 24 Exposures  
2316 Exposures 24 Exposures  
2340 Exposures 24 Exposures  
2376 Exposures 24 Exposures  
2400 Exposures 24 Exposures  
2448 Exposures 24 Exposures  
2484 Exposures 24 Exposures  
2520 Exposures 24 Exposures  
2556 Exposures 24 Exposures  
2592 Exposures 24 Exposures  
2640 Exposures 24 Exposures  
2688 Exposures 24 Exposures  
2724 Exposures 24 Exposures  
2760 Exposures 24 Exposures  
2796 Exposures 24 Exposures  
2832 Exposures 24 Exposures  
2868 Exposures 24 Exposures  
2904 Exposures 24 Exposures  
2940 Exposures 24 Exposures  
2976 Exposures 24 Exposures  
3000 Exposures 24 Exposures  
3048 Exposures 24 Exposures  
3084 Exposures 24 Exposures  
3120 Exposures 24 Exposures  
3156 Exposures 24 Exposures  
3192 Exposures 24 Exposures  
3216 Exposures 24 Exposures  
3240 Exposures 24 Exposures  
3276 Exposures 24 Exposures  
3300 Exposures 24 Exposures  
3336 Exposures 24 Exposures  
3360 Exposures 24 Exposures  
3396 Exposures 24 Exposures  
3420 Exposures 24 Exposures  
3456 Exposures 24 Exposures  
3480 Exposures 24 Exposures  
3516 Exposures 24 Exposures  
3540 Exposures 24 Exposures  
3576 Exposures 24 Exposures  
3600 Exposures 24 Exposures  
3636 Exposures 24 Exposures  
3660 Exposures 24 Exposures  
3696 Exposures 24 Exposures  
3720 Exposures 24 Exposures  
3756 Exposures 24 Exposures  
3780 Exposures 24 Exposures  
3816 Exposures 24 Exposures  
3840 Exposures 24 Exposures  
3876 Exposures 24 Exposures  
3900 Exposures 24 Exposures  
3936 Exposures 24 Exposures  
3960 Exposures 24 Exposures  
3996 Exposures 24 Exposures  
4020 Exposures 24 Exposures  
4056 Exposures 24 Exposures  
4080 Exposures 24 Exposures  
4116 Exposures 24 Exposures  
4140 Exposures 24 Exposures  
4176 Exposures 24 Exposures  
4200 Exposures 24 Exposures  
4236 Exposures 24 Exposures  
4260 Exposures 24 Exposures  
4296 Exposures 24 Exposures  
4320 Exposures 24 Exposures  
4356 Exposures 24 Exposures  
4380 Exposures 24 Exposures  
4416 Exposures 24 Exposures  
4440 Exposures 24 Exposures  
4476 Exposures 24 Exposures  
4500 Exposures 24 Exposures  
4536 Exposures 24 Exposures  
4560 Exposures 24 Exposures  
4596 Exposures 24 Exposures  
4620 Exposures 24 Exposures  
4656 Exposures 24 Exposures  
4680 Exposures 24 Exposures  
4716 Exposures 24 Exposures  
4740 Exposures 24 Exposures  
4776 Exposures 24 Exposures  
4800 Exposures 24 Exposures  
4836 Exposures 24 Exposures  
4860 Exposures 24 Exposures  
4896 Exposures 24 Exposures  
4920 Exposures 24 Exposures  
4956 Exposures 24 Exposures  
4980 Exposures 24 Exposures  
5016 Exposures 24 Exposures  
5040 Exposures 24 Exposures  
5076 Exposures 24 Exposures  
5100 Exposures 24 Exposures  
5136 Exposures 24 Exposures  
5160 Exposures 24 Exposures  
5196 Exposures 24 Exposures  
5220 Exposures 24 Exposures  
5256 Exposures 24 Exposures  
5280 Exposures 24 Exposures  
5316 Exposures 24 Exposures  
5340 Exposures 24 Exposures  
5376 Exposures 24 Exposures  
5400 Exposures 24 Exposures  
5436 Exposures 24 Exposures  
5460 Exposures 24 Exposures  
5496 Exposures 24 Exposures  
5520 Exposures 24 Exposures  
5556 Exposures 24 Exposures  
5580 Exposures 24 Exposures  
5616 Exposures 24 Exposures  
5640 Exposures 24 Exposures  
5676 Exposures 24 Exposures  
5700 Exposures 24 Exposures  
5736 Exposures 24 Exposures  
5760 Exposures 24 Exposures  
5796 Exposures 24 Exposures  
5820 Exposures 24 Exposures  
5856 Exposures 24 Exposures  
5880 Exposures 24 Exposures  
5916 Exposures 24 Exposures  
5940 Exposures 24 Exposures  
5976 Exposures 24 Exposures  
6000 Exposures 24 Exposures  
6036 Exposures 24 Exposures  
6060 Exposures 24 Exposures  
6096 Exposures 24 Exposures  
6120 Exposures 24 Exposures  
6156 Exposures 24 Exposures  
6180 Exposures 24 Exposures  
6216 Exposures 24 Exposures  
6240 Exposures 24 Exposures  
6276 Exposures 24 Exposures  
6300 Exposures 24 Exposures  
6336 Exposures 24 Exposures  
6360 Exposures 24 Exposures  
6396 Exposures 24 Exposures  
6420 Exposures 24 Exposures  
6456 Exposures 24 Exposures  
6480 Exposures 24 Exposures  
6516 Exposures 24 Exposures  
6540 Exposures 24 Exposures  
6576 Exposures 24 Exposures  
6600 Exposures 24 Exposures  
6636 Exposures 24 Exposures  
6660 Exposures 24 Exposures  
6696 Exposures 24 Exposures  
6720 Exposures 24 Exposures  
6756 Exposures 24 Exposures  
6780 Exposures 24 Exposures  
6816 Exposures 24 Exposures  
6840 Exposures 24 Exposures  
6876 Exposures 24 Exposures  
6900 Exposures 24 Exposures  
6936 Exposures 24 Exposures  
6960 Exposures 24 Exposures  
6996 Exposures 24 Exposures  
7020 Exposures 24 Exposures  
7056 Exposures 24 Exposures  
7080 Exposures 24 Exposures  
7116 Exposures 24 Exposures  
7140 Exposures 24 Exposures  
7176 Exposures 24 Exposures  
7200 Exposures 24 Exposures  
7236 Exposures 24 Exposures  
7260 Exposures 24 Exposures  
7296 Exposures 24 Exposures  
7320 Exposures 24 Exposures  
7356 Exposures 24 Exposures  
7380 Exposures 24 Exposures  
7416 Exposures 24 Exposures  
7440 Exposures 24 Exposures  
7476 Exposures 24 Exposures  
7500 Exposures 24 Exposures  
7536 Exposures 24 Exposures  
7560 Exposures 24 Exposures  
7596 Exposures 24 Exposures  
7620 Exposures 24 Exposures  
7656 Exposures 24 Exposures  
7680 Exposures 24 Exposures  
7716 Exposures 24 Exposures  
7740 Exposures 24 Exposures  
7776 Exposures 24 Exposures  
7800 Exposures 24 Exposures  
7836 Exposures 24 Exposures  
7860 Exposures 24 Exposures  
7896 Exposures 24 Exposures  
7920 Exposures 24 Exposures  
7956 Exposures 24 Exposures  
7980 Exposures 24 Exposures  
8016 Exposures 24 Exposures  
8040 Exposures 24 Exposures  
8076 Exposures 24 Exposures  
8100 Exposures 24 Exposures  
8136 Exposures 24 Exposures  
8160 Exposures 24 Exposures  
8196 Exposures 24 Exposures  
8220 Exposures 24 Exposures  
8256 Exposures 24 Exposures  
8280 Exposures 24 Exposures  
8316 Exposures 24 Exposures  
8340 Exposures 24 Exposures  
8376 Exposures 24 Exposures  
8400 Exposures 24 Exposures  
8436 Exposures 24 Exposures  
8460 Exposures 24 Exposures  
8496 Exposures 24 Exposures  
8520 Exposures 24 Exposures  
8556 Exposures 24 Exposures  
8580 Exposures 24 Exposures  
8616 Exposures 24 Exposures  
8640 Exposures 24 Exposures  
8676 Exposures 24 Exposures  
8700 Exposures 24 Exposures  
8736 Exposures 24 Exposures  
8760 Exposures 24 Exposures  
8796 Exposures 24 Exposures  
8820 Exposures 24 Exposures  
8856 Exposures 24 Exposures  
8880 Exposures 24 Exposures  
8916 Exposures 24 Exposures  
8940 Exposures 24 Exposures  
8976 Exposures 24 Exposures  
9000 Exposures 24 Exposures  
9036 Exposures 24 Exposures  
9060 Exposures 24 Exposures  
9096 Exposures 24 Exposures  
9120 Exposures 24 Exposures  
9156 Exposures 24 Exposures  
9180 Exposures 24 Exposures  
9216 Exposures 24 Exposures  
9240 Exposures 24 Exposures  
9276 Exposures 24 Exposures  
9300 Exposures 24 Exposures  
9336 Exposures 24 Exposures  
9360 Exposures 24 Exposures  
9396 Exposures 24 Exposures  
9420 Exposures 24 Exposures  
9456 Exposures 24 Exposures  
9480 Exposures 24 Exposures  
9516 Exposures 24 Exposures  
9540 Exposures 24 Exposures  
9576 Exposures 24 Exposures  
9600 Exposures 24 Exposures  
9636 Exposures 24 Exposures  
9660 Exposures 24 Exposures  
9696 Exposures 24 Exposures  
9720 Exposures 24 Exposures  
9756 Exposures 24 Exposures  
9780 Exposures 24 Exposures  
9816 Exposures 24 Exposures  
9840 Exposures 24 Exposures  
9876 Exposures 24 Exposures  
9900 Exposures 24 Exposures  
9936 Exposures 24 Exposures  
9960 Exposures 24 Exposures  
9996 Exposures 24 Exposures  
10000 Exposures 24 Exposures

**dimatube**  
\*2.27  
\*3.34  
**3.00**

**Storm Windows**  
\*Save 25%  
\*4 Pack Storm Window Kit  
\*Enough to do 4 windows \*Reg. 11.99  
\*Saves energy \*Light proof and air proof  
\*No. 704 \*Reg. 11.99  
**97¢**

**Insulating Shrink Film Storm Window System**  
\*Stays cold \*Saves energy \*Easily applied to paint or varnished wood, aluminum or vinyl coated molding \*Easy to clean crystal clear film \*Double coated tape  
\*Reg. 1.84  
**1.64**

**PHOTO COUPON**  
Developing & Printing Color Print Film  
12 Exposures 24 Exposures  
15 Exposures 24 Exposures  
18 Exposures 24 Exposures  
24 Exposures 24 Exposures  
36 Exposures 24 Exposures  
48 Exposures 24 Exposures  
72 Exposures 24 Exposures  
108 Exposures 24 Exposures  
144 Exposures 24 Exposures  
180 Exposures 24 Exposures  
216 Exposures 24 Exposures  
252 Exposures 24 Exposures  
288 Exposures 24 Exposures  
324 Exposures 24 Exposures  
360 Exposures 24 Exposures  
400 Exposures 24 Exposures  
450 Exposures 24 Exposures  
500 Exposures 24 Exposures  
540 Exposures 24 Exposures  
576 Exposures 24 Exposures  
600 Exposures 24 Exposures  
648 Exposures 24 Exposures  
684 Exposures 24 Exposures  
720 Exposures 24 Exposures  
756 Exposures 24 Exposures  
792 Exposures 24 Exposures  
828 Exposures 24 Exposures  
864 Exposures 24 Exposures  
900 Exposures 24 Exposures  
936 Exposures 24 Exposures  
972 Exposures 24 Exposures  
1000 Exposures 24 Exposures  
1036 Exposures 24 Exposures  
1072 Exposures 24 Exposures  
1108 Exposures 24 Exposures  
1144 Exposures 24 Exposures  
1180 Exposures 24 Exposures  
1216 Exposures 24 Exposures  
1252 Exposures 24 Exposures  
1288 Exposures 24 Exposures  
1324 Exposures 24 Exposures  
1360 Exposures 24 Exposures  
1396 Exposures 24 Exposures  
1432 Exposures 24 Exposures  
1468 Exposures 24 Exposures  
1504 Exposures 24 Exposures  
1540 Exposures 24 Exposures  
1576 Exposures 24 Exposures  
1612 Exposures 24 Exposures  
1648 Exposures 24 Exposures  
1684 Exposures 24 Exposures  
1720 Exposures 24 Exposures  
1756 Exposures 24 Exposures  
1792 Exposures 24 Exposures  
1828 Exposures 24 Exposures  
1864 Exposures 24 Exposures  
1900 Exposures 24 Exposures  
1936 Exposures 24 Exposures  
1972 Exposures 24 Exposures  
2008 Exposures 24 Exposures  
2044 Exposures 24 Exposures  
2080 Exposures 24 Exposures  
2116 Exposures 24 Exposures  
2152 Exposures 24 Exposures  
2188 Exposures 24 Exposures  
2224 Exposures 24 Exposures  
2260 Exposures 24 Exposures  
2296 Exposures 24 Exposures  
2332 Exposures 24 Exposures  
2368 Exposures 24 Exposures  
2404 Exposures 24 Exposures  
2440 Exposures 24 Exposures  
2476 Exposures 24 Exposures  
2512 Exposures 24 Exposures  
2548 Exposures 24 Exposures  
2584 Exposures 24 Exposures  
2620 Exposures 24 Exposures  
2656 Exposures 24 Exposures  
2692 Exposures 24 Exposures  
2728 Exposures 24 Exposures  
2764 Exposures 24 Exposures  
2800 Exposures 24 Exposures  
2836 Exposures 24 Exposures  
2872 Exposures 24 Exposures  
2908 Exposures 24 Exposures  
2944 Exposures 24 Exposures  
2980 Exposures 24 Exposures  
3016 Exposures 24 Exposures  
3052 Exposures 24 Exposures  
3088 Exposures 24 Exposures  
3124 Exposures 24 Exposures  
3160 Exposures 24 Exposures  
3196 Exposures 24 Exposures  
3232 Exposures 24 Exposures  
3268 Exposures 24 Exposures  
3304 Exposures 24 Exposures  
3340 Exposures 24 Exposures  
3376 Exposures 24 Exposures  
3412 Exposures 24 Exposures  
3448 Exposures 24 Exposures  
3484 Exposures 24 Exposures  
3520 Exposures 24 Exposures  
3556 Exposures 24 Exposures  
3592 Exposures 24 Exposures  
3628 Exposures 24 Exposures  
3664 Exposures 24 Exposures  
3700 Exposures 24 Exposures  
3736 Exposures 24 Exposures  
3772 Exposures 24 Exposures  
3808 Exposures 24 Exposures  
3844 Exposures 24 Exposures  
3880 Exposures 24 Exposures  
3916 Exposures 24 Exposures  
3952 Exposures 24 Exposures  
3988 Exposures 24 Exposures  
4024 Exposures 24 Exposures  
4060 Exposures 24 Exposures  
4096 Exposures 24 Exposures  
4132 Exposures 24 Exposures  
4168 Exposures 24 Exposures  
4204 Exposures 24 Exposures  
4240 Exposures 24 Exposures  
4276 Exposures 24 Exposures  
4312 Exposures 24 Exposures  
4348 Exposures 24 Exposures  
4384 Exposures 24 Exposures  
4420 Exposures 24 Exposures  
4456 Exposures 24 Exposures  
4492 Exposures 24 Exposures  
4528 Exposures 24 Exposures  
4564 Exposures 24 Exposures  
4600 Exposures 24 Exposures  
4636 Exposures 24 Exposures  
4672 Exposures 24 Exposures  
4708 Exposures 24 Exposures  
4744 Exposures 24 Exposures  
4780 Exposures 24 Exposures  
4816 Exposures 24 Exposures  
4852 Exposures 24 Exposures  
4888 Exposures 24 Exposures  
4924 Exposures 24 Exposures  
4960 Exposures 24 Exposures  
5000 Exposures 24 Exposures

**Mums History**

(From 2C)  
to the maximum amount of light to accomplish both functions. There are many Chrysanthemum growers in the fall of the year and you must remember that all the Chrysanthemums shown in the shows were grown outside and not in greenhouses. Throughout the South and Southwest we have many Chrysanthemum Chapters that are associated with the National Chrysanthemum Society, which welcomes visitors to their monthly meetings and shows. If you are not interested in a Chrysanthemum Chapter and there is a minimum of ten interested people I will be most happy to help you set up a chapter and obtain your national charter. If you are interested you may contact me by writing to this newspaper.

So long for now and good gardening till next time from your Garden Editor  
Ted Brice

**Warren Sets Tax Rate**

The Warren Independent School District Board of Trustees met Tuesday, October 22, 1985, and set the 1985-86 tax rate at \$1.21. Even though the new rate is lower than the 1984-85 rate, taxpayers can expect a 10-25% increase because of new valuations. The vote on the tax rate was 5-1. Board member Marvin Fanning, who recommended a rate of \$1.19, voted against the \$1.21 rate. Fanning felt that the district had too much money in surplus and that some of that money should be used to meet part of the district's expenses for 1985-86. According to Fanning, "Times are hard, and we need to do everything we can to keep the tax rate down."

The Board approved an expenditure of approximately \$685 to install a new telephone system at Fred Elementary. The Board tables any action on the 1984-85 Audit, the Energy Contract by J&K Engineering, and Board policies regarding "New Employees on the Career Ladder," "Consultation with Teachers Agreement," and the "Substitute Teacher" policy.

Curriculum Director Dixie Weeks informed the Board that all districts in the state are now required to write and submit a Discipline Management Plan to the agency on or before February 1, 1986. The Warren plan will be submitted to the Board for approval at the December meeting.

Board President Harold Davis announced that the District Board of Trustees will meet on Wednesday, November 14, 1985, at 7:00 p.m. in the Warren Board Room. The agenda includes the Board meeting, the Energy Contract, the J&K Engineering contract, and the "New Employees on the Career Ladder" policy.

### A Beautiful Way To Save On Your Heating Costs

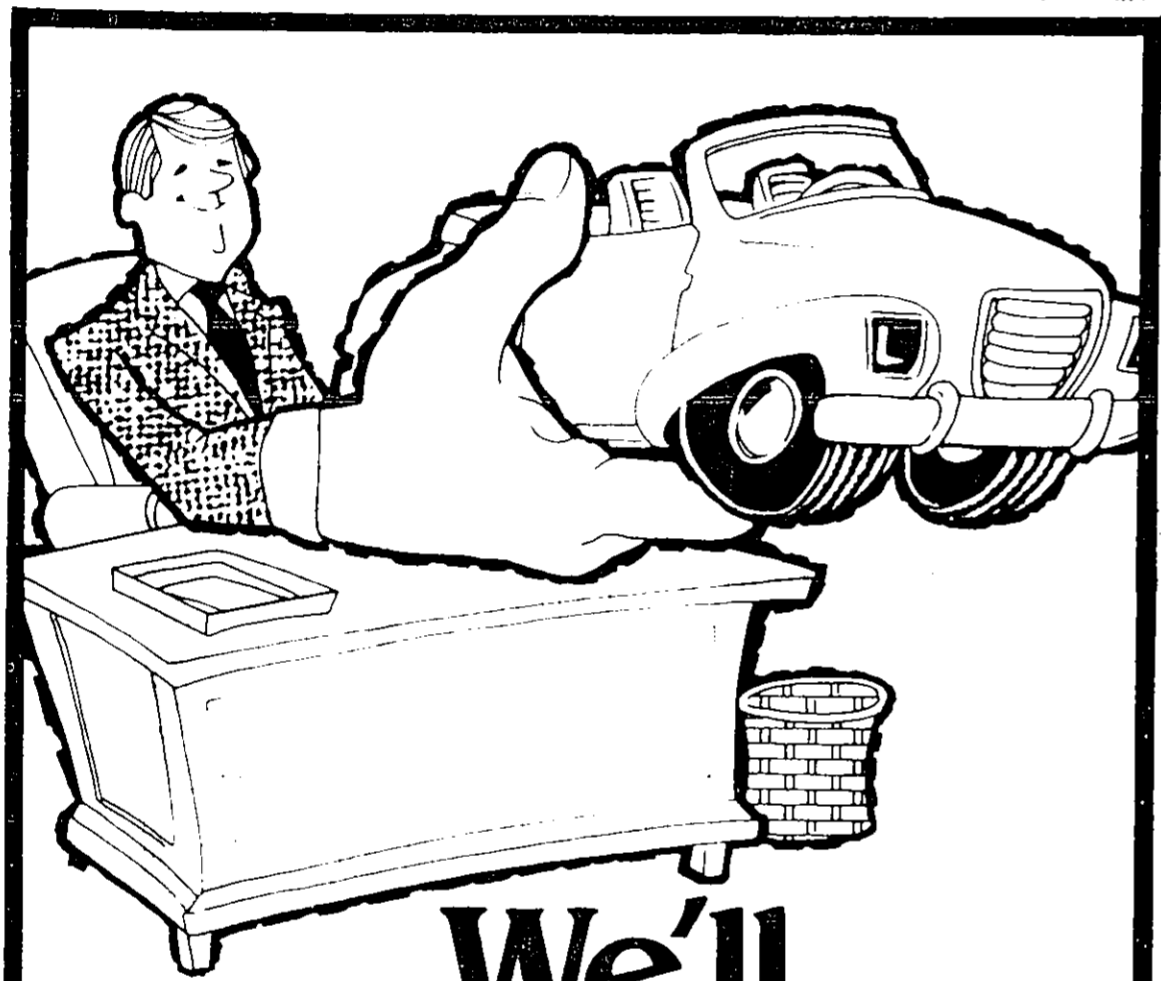
283-5222

- Optional anthracite burner
- Freestanding model available

512 S. Mag Woodville

**TYLER COUNTY TRACTOR, INC.**

**ADVERTISE TODAY**



# We'll Lend A Hand.

You've finally found the new car or truck you wanted. At the right price. Now comes the tough part. Finding the right financing.

For the best deal on an auto or truck loan, step in our direction. We can arrange financing that's tailor-made for your budget and, quite possibly, with more realistic terms than required by most other financial plans.

Step into that new car or truck. We'll lend a hand with the most competitive loan rates and terms.

**THE STEP-AHEAD BANK**

**CITIZENS STATE BANK**

P. O. BOX 109, WOODVILLE, TEXAS 75979

PH. 405-283-2561

## Get Beetle Ravaged Areas In Production

Most publicity about the southern pine beetle problem in Texas has focused on the acreage affected and the timber volume and value lost. According to a state forest service spokesperson, an equally important aspect of the bark beetle situation is the need to get beetle-ravaged areas back into production.

"Unless beetle-ravaged areas are restocked, much of the productive capacity of the soil will be lost to weeds and brush," says Dot Miller, county forester with the Texas Forest Service in Woodville.

The TFS forester cites two incentives for landowners to re-establish tree crops in such areas: One incentive is cost-sharing assistance for qualified landholders for tree planting expenses including the costs of site preparation. A second inducement is the wide range of ownership benefits available with woodland investments. These can include recreation, wildlife, scenic beauty and income production.

"Few investments provide the diversity of benefits offered by timber growing," says Miller.

According to the Service forester, landholders can minimize future pest problems in their woodlands through intensive management. Vigorously growing woodlands are healthier and much less susceptible to successful beetle attack than are unmanaged woodlands in which trees are stagnated.

Intensive management of pine woodlands will produce more benefits for owners and will help ensure that the full productive potential of these woodlands is captured. Restocking new tree crops in understocked areas will recapture lost productivity.

Landholders can contact any Texas Forest Service office for land productivity and re-creation assistance, including forest pest hazard about improving woodlands in this area. Contact the TFS at P.O. Box 336, Woodville, TX 75979, 409/283-3785.

**SUBSCRIBE TO THE BOOSTER**



## Introducing The Ward's Quarder™

1/4 lb., 100% beef pattie dressed with your choice of crisp lettuce, garden-ripe tomatoes, Ward's sauce, diced onions and pickles on an oven-fresh bun. Served homestyle with a smile.

**WARD'S**

1125 S. Magnolia Street  
Woodville, Texas

Where old-fashioned means more than just root beer!