

Hong & Sons Bindery  
2730 Alpha  
Langford, N.J. 41-910  
EXP. 11/30/70  
MEMORIAL FOR A FRIEND! 253-2569

# Warren Board Establishes 'Open Forum' Formula

By Annabeth Willis  
In an effort to "give anyone who wants to the freedom to speak," the Warren Independent School District Board of Trustees Tuesday, November 25, approved the "Open Forum" concept for all future Board Meetings. A time will be set aside at each Board Meeting, and anyone wishing to speak may do so. Each presentation will be limited to five minutes. Past Board policy required that a person be on the published Board Agenda in order to speak at a Board Meeting.

requested five minutes to speak about discipline in the school district. According to Burrow, the Discipline Management Guide which was adopted by the district is not clear and has led to many questions regarding definitions of certain terms. Burrow stated that discipline management is handled differently on the four campuses and this has led to further confusion. The Middle School campus was well represented at the Board Meeting, and several teachers voiced their concern about the lack of consistency in disciplining students on their campus. James Rogers, Middle School Language Arts Teacher, stated that he was concerned about what happened or did not happen when he sent a student to the office. He said, "One kid will be punished and the next one won't be. I've had a kid come back laughing at me because nothing happened." According to Jo. Selley, Middle School Librarian, "Discipline is taking too long." Sherry Mitchell, secretary to Middle School Principal C. J. Herliard, was asked what happened when a student was sent to the office and the principal was gone. Mitchell stated that she occasionally sent students back to class because Herliard was not in his office. She said that no one takes the principal's place when he is absent. Teachers were also upset because they felt that some parents were being

allowed to intervene in administrative decisions, and that discipline was not being carried out because of this intervention. Middle School Principal, C. J. Herliard did not attend the meeting. The Board said that all the matters regarding discipline management would be looked into and requested that the discussion be brought to a close for the present time. Burrow then spoke regarding two new Board policies which would require teachers in the district to receive administrative approval before acquiring a second job. According to Burrow, "We are paid a salary for services rendered and you are entitled to a full day's work. No law

allows 24-hour control of a person's time." Burrow requested on behalf of teachers in the district that the policies be stricken. Board Member Walter McAlpin read excerpts from a school law manual which he felt covered the same items that were covered in the local policies, thereby making the local policies unnecessary. The rest of the Board could not come up with a reason for the local policy, but agreed that "These things are written for a purpose." Roger Daeschner, T.S.T.A. Representative, stated to the Board, "There is no law that says this has to be in your policy. If you keep this policy, there are no exceptions. The reason this policy was put in is to

give you greater authority over your teachers." The Board agreed to put the policy review on next month's Board agenda. The Board voted to purchase a Multiperil and Liability Insurance Policy in the amount of \$25,154.00 from the Texas Association of School Boards. The policy, which was the cheapest one the District was able to find, is almost three times the cost of the last policy. Because of this, the budget had to be amended or funds transferred to pay for the policy. The Board was reluctant to make these changes even though Bookkeeper Billie Young told them she could not pay the bill unless the funds were transferred. Board Member Maxine Lanning moved that \$16,000.00 be taken from the Building Fund to the Insurance Fund. All members voted for the motion except Walter McAlpin. The Board accepted the resignation of School Nurse Carolyn Rice effective December 31, 1986. They employed Joan Collins to serve as the second nurse for the District. According to School Attorney Jerry Hatton, the case pending against the District by former Superintendent Adolph Heybortchuk and his wife, Jeanette Heybortchuk has been postponed once again. Hatton said the request was a mutual one because the discovery was not complete. As the case against Hatton, all the positions necessary for

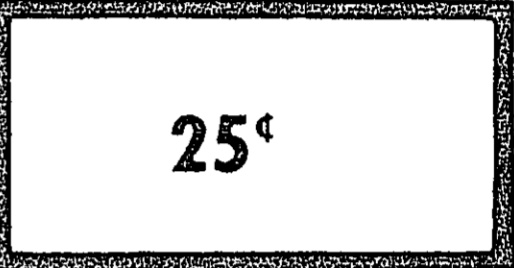
## Art-Craft Fair Set Saturday

Downtown Arts and Craft Fair will be December 6, 1986 from 9:00 a.m. to 5:00 p.m. Santa will be arriving on the Fair Truck at 5:00 p.m. for the lighting of the Christmas Tree on the Courthouse Square.

# THE TYLER COUNTY BOOSTER



Vol. 57 No. 49  
2 Section 18 Pages



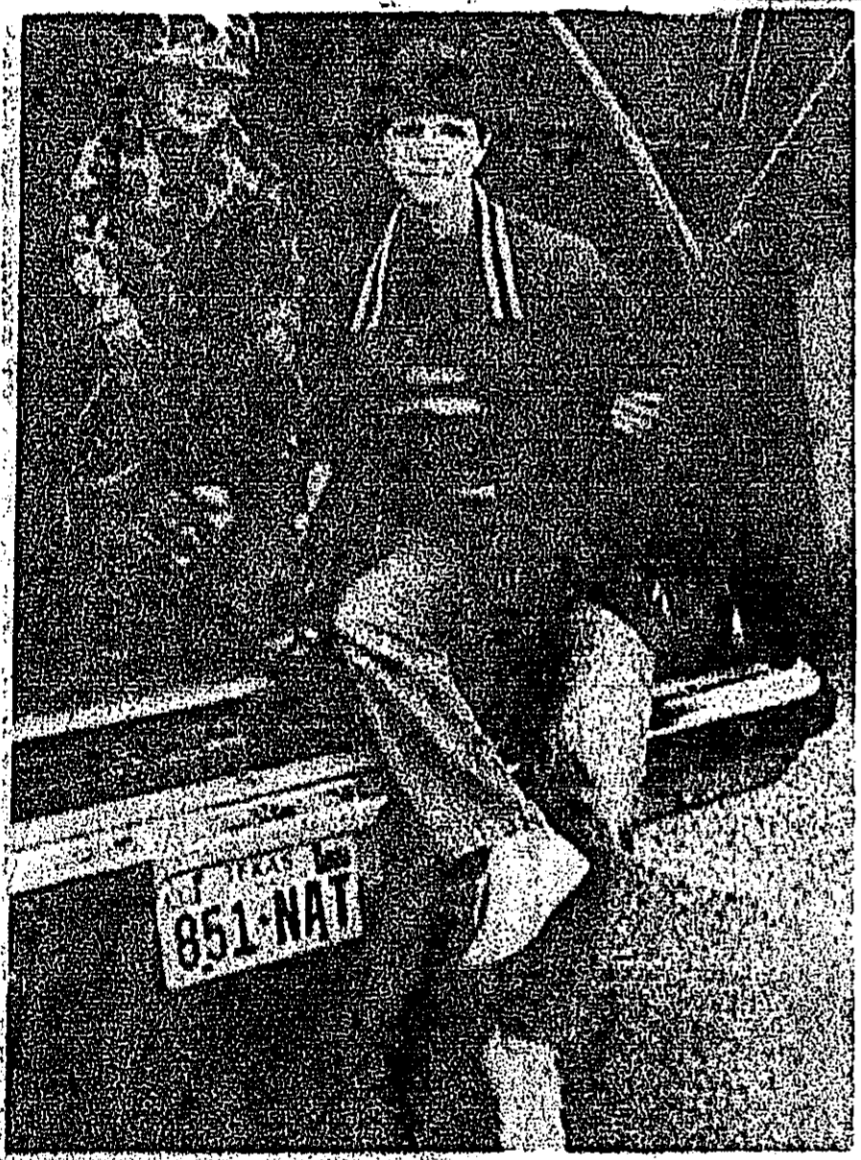
Thursday, December 4, 1986  
Woodville, Texas 75790

## Tour Of Homes Saturday

The annual Woodville Tour of Homes will be held Saturday, December 6th from 11 a.m. to 3 p.m. The homes included in this year's tour will be the Sue and Gil Tubb home at 610 Bluff Street Highway 190, sponsored by The Heritage Club, the Shella and Walter Umphrey home located South 287 to Hillister, and B-ann 1022, for 2

miles sponsored by The Women's Study Club. Tickets will be available at the tour homes for \$3.00 for the three homes. This year in addition to

the home tour there will be a home tour at The Homestead Restaurant in Hillister, Texas. Tickets for the luncheon are \$5.00 and must be purchased prior to December 1. For additional information contact any club member. All proceeds are applied to scholarships for local students.



**BIG DUCK** Dianne Whitworth of Chester, shown with little hunter Cory Whitworth, shows her Booster Big Duck Contest entry which now holds second place. Mrs. Whitworth's total is 83.25 points. She brought in this trophy on only her second time hunting. She said the duck "was framed between two trees" in the Enon Pasture.

## County Extension Open House Dec. 8

On behalf of the Tyler County Extension Service, we would like to invite the public to an open house, to be held on Monday, December 8 from 10 until 12 a.m. The Texas Agricultural Extension Service is an education agency charged with the responsibility of providing useful and practical information in agriculture and home economics to the people of Texas. We are constantly trying to find ways to improve this service to all people. Should you need information from the Tyler County Extension Service, please feel free to call 283-2482 or visit your Tyler County Extension Office located in the courthouse. One of the following County Extension Agents will be happy to assist you: Mrs. Jamie Margulis, County Extension Agent, Home Economics; Mr. Bob Armentrout, County Extension Agent-Agriculture, or Diana Haralson, Secretary. The Extension Service provides from publications and educational programs on many topics such as: home gardens, food preservation and nutrition, home landscaping and lawns, family stability, home remodeling and decorating, clothing and sewing, farm and family management, forest management, livestock produc-

tion, crop production, community development, consumer education, health and safety, Extension home market clubs, leadership development and 4-H clubs and projects.



**BEAUTIFICATION AWARD WINNER** Joe and Betty Riley of NAPA Auto Parts, Hwy 69 Woodville, received the Tyler County Chamber of Commerce Monthly Beautification Award Monday as presented by Chamber President John Coker and Chamber representatives Sharon Puller and Terry Riley of Riley Funeral Home. The significance of this particular award is that The Riley's received the first award given by the Chamber for a business' beautification and improvements efforts, several years ago.

## DETDA To Meet Here

Deep East Texas Development Association will hold its regular monthly meeting, Friday, December 5th in Woodville, at 10:00 am at the Woodville Inn. Joe Love, President of the Association, announced today; Charles Voll, Superintendent of the National Park Service from Beaumont will be the principal speaker at the monthly meeting. The program will be on the National Park Service activities and the "Big Thicket" National Preserve. Charles Voll is a veteran of 30 years of Federal Government service. Voll was born to American Christian missionary parents in Istanbul, Turkey and arrived here in the United States in 1933. He was asked to update New York and New England. Voll served with the US Army Transportation Corps in Korea. He served in the service from 1956-1965. Voll is a 1961 graduate from the University of New Mexico with a B.A. in Anthropology. He entered the National Park Service as an archeologist in 1968 at Casa Grande National Monument, Arizona. He was assigned to the National Park Service Southwest Archeological Center, Arizona in the 1960's and worked in most of the National Park Service archeological areas in Arizona and New Mexico as an archeological preservation specialist. Voll's special assignments have been in Georgia, 1962; the Hashemite Kingdom of Jordan, 1967; Guatemala, 1971; and Alaska, 1972. Voll served as a park superintendent at Casa Grande, Ruess National Monument, Arizona, 1966; Canyon de Chelly National Monument, Arizona, 1968-1970, and as the assistant general superintendent and general superintendent of the Navajo-Lands Group, Arizona-New Mexico in 1970-1983. In 1985, he came to the Big Thicket National Preserve.



**Solons Gather**  
NEW JUDGES SEMINAR: Four new and two incumbent county judges from the Deep East Texas region recently attended a New Judges Seminar held in Lufkin. Those attending were (from left) Allen Sturrock of Tyler, Glendon Jackson of Shelby, Richard West of Jasper, Dan Jones of Angleton and Charles English of Houston. Not pictured is Bob Dean of Nacogdoches.

## Progressive Dinner Set Dec. 9

Colmesnell Extension Homemakers Club will have a Progressive Dinner Christmas Party, Dec. 9th 1986. All Club members and guest will meet at Community Center at 10:30 a.m. We will go in hope of June Reid for applicant, Gloria Newsum for main course. Doris Davis for dessert and exchange of gifts. Bring a covered dish, gift and a big apple.



**BEHAVE IT OR NOT!** Santa will come to your house. Call 283-2173, 283-3785 or 283-2463. For a merry Christmas just pick up the phone and invite Santa over for a visit. Ho! Ho! Ho!

## 'Thanks For Tree Of Lights'

We would like to thank the following persons for their contribution to the tree of lights. Your donation will brighten the Christmas for children here in Tyler County. Tom McCullough, Mr. and Mrs. J. T. Stryker, Mollie Stryker, Ruth Gillespie, Lula Collier, Alice McGovney, American Association of Retired Persons, William Mauerleif, Woodville Rotary Club, United Daughters of the Confederacy, Phillip A. Work Chapter, Woodville Garden Club, Mety Ann Kistell.

# PERSONAL & FAMILY

# accent on

## Yoast-Gibson Rites Set

Monica Marie Yoast and Jerry Elvin Gibson will marry December 20 at Texas Baptist Church.

Mrs. Randy Yoast of Port Neches, Texas, daughter of Mr. and Mrs. W. R. Brandin of Port Neches, and Mrs. Heale Yoast of Groves, Texas, are the bride and groom.

### ANNOUNCING OFFICE HOURS:

**Sam D. Mann, D.D.S.**

Monday, Tuesday & Friday 8am-4pm

Wednesday 8am-12 Noon

Thursday 1pm-6pm

Closed 12-1 Daily For Lunch

BY APPOINTMENT ONLY

Hwy 69 South

Colmesneil



## OES Chapter To Meet Dec. 11

The Woodville Chapter of the Order of the East Star will hold a Christmas Eve celebration on Thursday, December 11th, at the home of Mrs. Worthy Payton. The program will include a Christmas dinner, a play, and a drawing.

## ABWA To Meet Tuesday Dec. 7

The Wixonia Chapter of the American Business Women's Association will hold its monthly meeting on Tuesday, December 7th, at 7 p.m. at the home of Mrs. Schuler.

## Lions Christmas Dinner

The Lions Club will have a Christmas Dinner on Thursday, December 11th, at 7 p.m. at the club home. The dinner will be a special occasion for all members and their families.

# tyler county



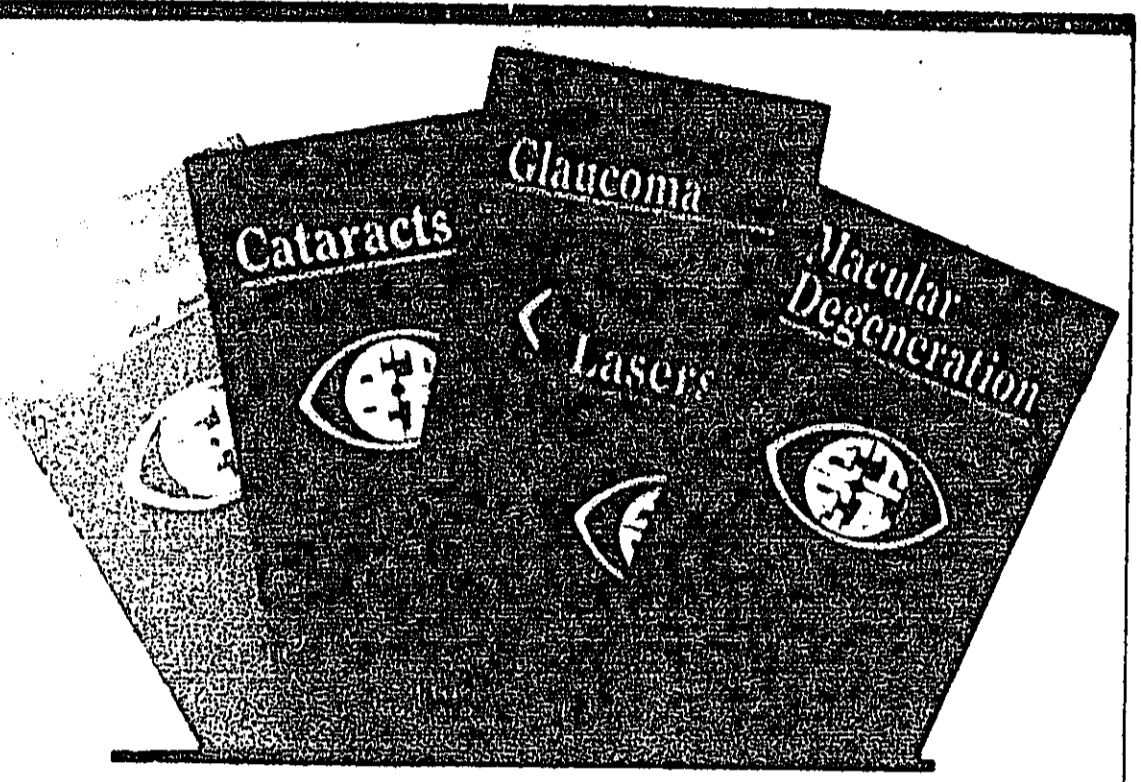
## Beech Creek Group Meets

The regular meeting of the Beech Creek Extension Homemakers was held on Thursday, December 11th, at the home of Mrs. Worthy Payton. The program included a Christmas dinner and a drawing.

The regular meeting of the Beech Creek Extension Homemakers was held on Thursday, December 11th, at the home of Mrs. Worthy Payton. The program included a Christmas dinner and a drawing.

## Harp Concert Sunday Evening

Louise Lantr Trotter, a nationally known harpist, will present a Harp Concert on Sunday evening, December 7th, at 7:00 p.m. at the First Baptist Church of Woodville.



## Five Brochures That Will Open Your Eyes.

It is hard to imagine your most cherished scenes without a world without beauty, a world without vision, a world without visual drama. Many things can affect your sight, from the glaucoma, an quiet vision without warning.

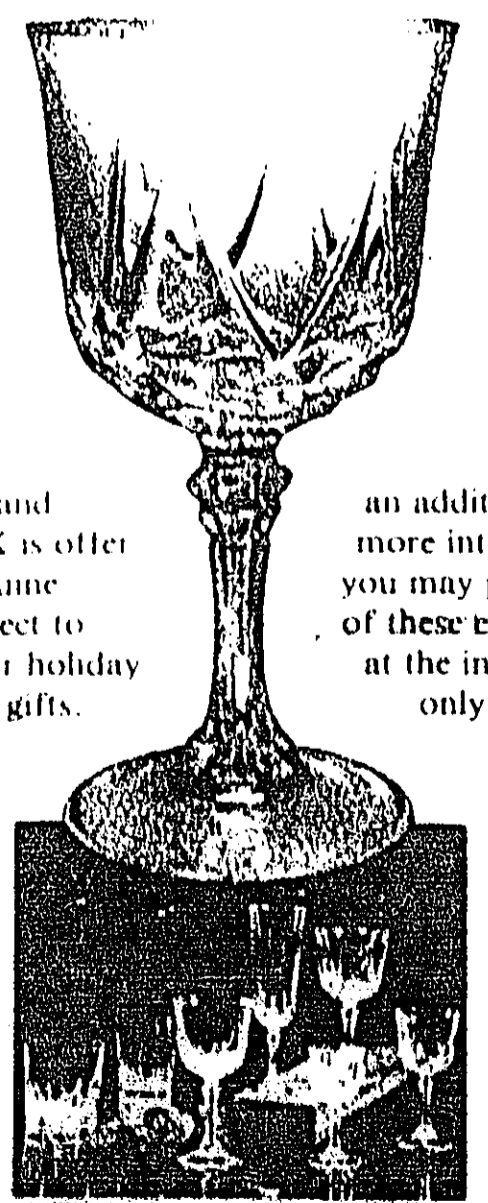


### East Texas Eye Associates

The Eye Clinic  
1306 Frank Avenue • Lubbock, Texas 79001  
(409) 784-8381 • 1-800-927-6448

We specialize in eye care for senior citizens. Medicare and Medicaid accepted.

# Sparkling Gift for the Holidays.

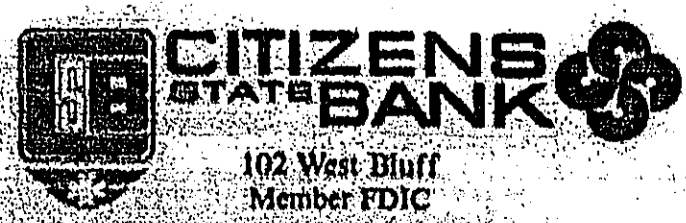


The holidays are upon us and CITIZENS STATE BANK is offering a sparkling gift of genuine French Lead Crystal. Perfect to enhance the beauty of your holiday table or for you to give as gifts.

Choose from 7 shapes: 13 oz. tumbler, water, sherry, champagne/parfait, cordial, wine and 8 oz. tumbler. Your first PAIR is FREE when you open a checking or savings account at CITIZENS STATE BANK. Each time you make

an additional deposit of \$50 or more into any of our savings plans, you may purchase another PAIR of these exquisite crystal glasses at the incredibly low price of only \$6.

There are even more exciting offers if you deposit \$5,000 or \$10,000 in a Certificate of Deposit. Ask any CITIZENS STATE BANK representative for further details. For you or someone you love, sparkling French Lead Crystal from CITIZENS STATE BANK.



102 West Bluff  
Member FDIC

### To Be Wed

#### Child Welfare Christmas Tree

Tyler County Child Welfare Board Christmas Tree of Lights will be distributing toys for the needy children Thursday, December 18, 1986, from 1:00 p.m. to 5:00 p.m. in the Woodlawn Opera House Behind the Courthouse.

#### 4-Hers To Vie In District Food Show

The culinary skills of local 4-H club members will be on display December 6 at the District 4-H Food Show at Stephen F. Austin University Campus, University Center in Nacogdoches.

Winning the district event from Tyler County in the senior division are Paula Jones, breads and cereals; and Aleta Thomason, nutritious snacks and desserts.

Local entries in the junior division include Jennifer Jones, nutritious snacks and desserts. Each of the 4-H'ers previously won their division in the county food show. In addition to displaying their dish, the young people will be asked questions by the judges on general nutrition and the nutritional value of their display.

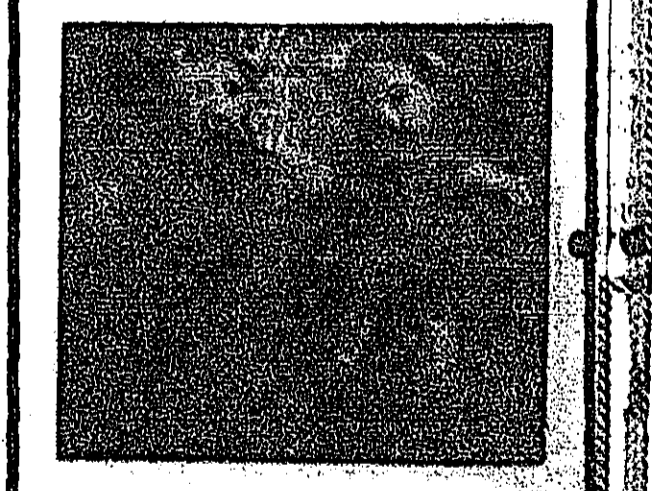
The winners in the senior division of the district show will represent the 20 county district at the State 4-H Food Show during State 4-H Roundup in June on the campus of Texas A&M University. The event is sponsored by the Texas Agricultural Extension Service.



President James A. Garfield was able to write Lally with his right hand and Greek with his left hand simultaneously.

Opening Dec. 6th  
**JENNY'S ANTIQUES & CRAFTS**  
Open 9-5 Tues - Fri  
9-3 Saturday  
469-283-7866  
Jenny & Royce Beat  
Owners  
Hwy 69 S. Woodville

**ORIGINAL PEDIGREE PORKERS!!!**  
NOW IN STOCK



**JUST IN TIME FOR CHRISTMAS**  
29<sup>99</sup> OR  
**2 FOR 49<sup>99</sup>** plus tax  
AVAILABLE AT IVANHOE VILLAGE MARKET LIMITED SUPPLY CALL 283-7479

**AFFORDABLE** FOUND EXCLUSIVELY AT  
Open til 8pm Thursday December 4, 11 and 18

<b>Gifts</b>	<b>Wrangler</b>
Mens Suits, Sweaters & Sport Coats	Cowboy Cut Jeans 13.99
25% Off	Levi's Straight Leg & Boot Cut 14.99
Mens Flannel Western Snap Shirts Reg. 9.99 Now 7.99	501 Shrink-To-Fit 16.99
Clearance! Entire Stock	501 Prewashed 19.99
Girls' Jeans Sizes 4-14 20% Off	Boys Jackets 25% Off
•Lee•Levi•Jordache Reg. 14.99 to 27.99 Now 11.99 to 22.99	

**J.B. BEST & CO.**  
On The Square Woodville  
WE GIFT WRAP FREE

**WHEELS**

155/70R13 4 \$99.95	155/70R13 4 \$124.95
165/70R13 4 \$115.95	165/70R13 4 \$139.95
175/70R13 4 \$129.95	175/70R13 4 \$159.95
185/70R13 4 \$159.95	185/70R13 4 \$195.95
195/70R13 4 \$239.95	

**HEAVY DUTY SHOCKS \$44.00**  
**DISC BRAKE SPECIAL \$59.95**  
**ALIGNMENT \$18.00**

**Modica Bros.**  
Tires & Wheels

# OBITUARIES

# TYLER COUNTY HOSPITAL

Visiting Hours: 10-11 am, 2-4 pm, 6-8:30 pm

Patients Admitted Week of November 25, 1984

**BERTHA MAGDALENE CASKEY**  
Funeral services for Bertha Magdalene Caskey, 77, of Madisonville, Texas were held Tuesday, December 2, 1984 at 10 a. m. at Edwards Funeral Home Chapel with Elder H. C. King officiating. Burial was held at Turner Branch Cemetery. She died November 29, 1984. She was a retired Vocational Nurse. Survivors include son, A. W. Caskey of Coal Hill, Arkansas, daughters, Frankie Martine of Houston and June Cook of Madisonville, Texas. Brother, Joe Warren of Houston, Grandchildren, Laurie Fisher of Newark, Okla. and Bonnie Martinez of Houston, Mo. and Heather Caskey of Coal Hill, Arkansas. Pallbearers were Sam Jefferson, C. L. Jeffcoat, Pete Howell, Pete Jeffcoat, and L. C. Jeffcoat.

**FRIDIE SMITH**  
Friedie Smith was the second of 5 children born to Mr. and Mrs. Elmer Smith, Sr. on March 22, 1920 in Woodville, La. He spent his entire life in Tyler County. He attended public school at North High School in Woodville, La. He worked with the Pleasant Hill Baptist Church for an entire year and served as Treasurer of the Deacons Board for a number of years. He was buried in Holy Matrimony with Friedie Mae Odom on Sept. 21, 1984. He was laid to rest in the Deacons Burial Home. He was the father of 5 children. He was a member of the Houston State Lodge #123 and the grand of Woodville Royal Oak Chapter #78. He is survived by his father, Mr. Elmer Smith, Sr. of Woodville, La. 3 sons, Bionta Smith of Beaumont, La., Arthur Smith of Woodville and Ray Smith of Houston, 7 grand children, Louise Ragan Smith and Nancy Odom Smith. One son, Miss Anna Holt of Woodville, La. 2 brothers, Odel Smith of Houston, La. and Elmer Smith Jr. of Houston, La. a host of nieces, nephews, cousins and friends. Services were held Saturday, November 29th at 2:00 p.m. at Pleasant Baptist Church. Burial was at Magnolia Cemetery. It was officiated by Rev. T. P. Hadden under the direction of Christian Life Center Funeral Home.

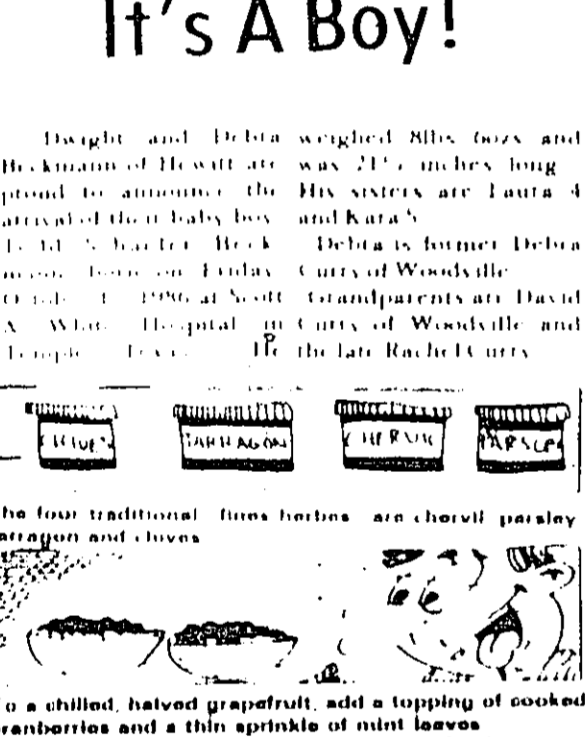
## Woodville Womens Aglow Dec. 4

What better Christmas gift could we give ourselves than to have lovely Alvie Williams come and present the Spirit of Christmas to us? Alvie who was born and raised in Woodville has been such a treat to all of us especially those who were at the last Spring Retreat and heard her speak on the Beatitudes. She also delights in through the recalls TV message on Sunday that many of us listen to as the ministers lead in song. This is a rare lady that will enrich your life and you will surely be blessed as Alvie brings that wonderful Good News of Living Savior, an Almighty God, an ever-lasting Father, the message of JESUS! Be with us as we come together to welcome Alvie Williams Woodville Motel Thursday, December 4, 1984 at 10 a.m.

**It's A Boy!**  
"Would You Like A Cup Of Confidence?"  
Having You invited doubt to share a room with you, but doubt was only talking about what you should not do. From the beginning, doubt was feeding you with a head full of lies. Sometimes you wanted to trust his advice, but doubt never gave you a solid answer as to what to do. Doubt was not only sharing your neighbor hood, but doubt was beginning to move in with you.

The doubt family was always changing their thinking arrangement Christian fellowship, and family relationships with one another. As a concerned neighbor you began to play therapist, but you found that you were becoming increasingly involved with your decision making. Your neighbor was giving you their disease called DOUBT. Decisions were becoming harder for you to make, to you spent hours doing nothing. Never had the pressure of this life, got you down, but you are now struggling to maintain a stable social and professional life style. Doubt has found himself another home to feed upon.

Now, you walk around with this contagious disease that you received from your next door neighbor. You are about to lose everything that you ever worked for. This neighbor has no particular color, race, or socio-economic group that allows to pick on. Many Christians are walking around with this disease called DOUBT. They have lost their confidence to make another step forward, but you continue to associate with them. The door neighbor is the worst neighbor to the doubting Christian, who spreads his disease among the weak and strong. If doubt becomes your next door neighbor, invite him and his family over for a cup of confidence.



## Grammer's Grocery

W. Bluff Woodville 283-2520

We gladly accept Amex, Visa, MasterCard, American Express & Food Stamps.

SALE PRICES ARE GOOD FOR SEVEN DAYS	SALE PRICES AVAILABLE WITH CASH PURCHASE ONLY
TEXACO GAS 8.9 Unleaded cash	
Wilson Preferred Trust center at Park Chop 1.29 lb	
Heavy Beef Rib Eye Steaks 5.99 lb	
Heavy Beef Brisket 1.09 lb	
Boneless Chuck Steak 2.39 lb	
Boneless Chuck Roast 1.69 lb	
Ground Chuck 3 lbs or more 2.09 lb	
Small Pork Ribs 2.29 lb	
Pork Cut at Park Chops 1.89 lb	
Korn King Boneless Ham Whole 1.79 lb	
Wilson Boned Ham 2.69 lb	
Horned Pressed Ham 1.99 lb	
Fresh Pork Ham 2.69 lb	
Hillshire Farm Smoked Sausage 2.39 lb	
Horned Sliced Slab Bacon 1/2 lb or more 2.39 lb	
All 2 Liter Dr. Pepper Products 1.29 plus tax	
All 16 oz. Bottle Dr. Pepper Product 45 plus tax	
Dr. Pepper & 7 Up can drinks 2.29 plus tax	
6 Pack 16 oz. Dr. Pepper 1.79 plus tax	
3 Liter Coke Products 1.69 plus tax	
2 Liter Pepsi 1.99 plus tax	
6 pack cans Pepsi Cola 1.69 plus tax	
16 oz. bottled Pepsi 45 plus tax	
6 pack 16 oz. Pepsi 1.89 plus tax	
16oz. six pack Cokes 2.29 plus tax	
16oz. Cokes 45 oz. plus tax	
6 Pack Cokes 1.89 plus tax	
Borden's Milk, gal. 2.15	
Borden's Milk, half gal. 1.29	
Domino Sugar, gal. 4.15	
Domino Sugar, half gal. 2.15	
Domino's Orange Drink 91 gal. plus tax 2.49	
Lady Borden's Ice Cream 1.79	
Unilever Large Eggs 1.49	
Postums & Tea, 1/2 gal. 1.99	

# Church Services

**ABUNDANT LIFE FELLOWSHIP ASSEMBLY OF GOD**  
Hwy 190 at 92, Dam B, Texas, Sunday Morning worship at 10:30 a.m., Sunday evening worship at 6:00 p.m., and Wednesday Fellowship at 7:00 p.m. Rev. Donald Ray Hensarling pastor. 283-7862.

**ASSEMBLY OF GOD**  
Worship 11 a.m., Evening Worship 7 p.m., Wednesday Bible Study 7 p.m.

**COLMESNEIL ASSEMBLY OF GOD CHURCH**  
J.C. Carter, pastor. Sunday School 9:45 a.m., Morning Worship 11 a.m., Evening Worship 7 p.m., Office/Home R374424.

**ILLUSTRATED ASSEMBLY OF GOD CHURCH**  
Hwy 190, pastor Sunday School 9:45 a.m., Morning Worship 11 a.m., C.A.'s (youth) 5 p.m., Evening Worship 7 p.m., Spiritual Renewal Wednesday 7 p.m., Office 783 2725, Home 547 3378.

**OAK GROVE ASSEMBLY OF GOD CHURCH**  
Hwy 92 between Fred and Spurger, Sunday School 9:45 a.m., Morning Worship 11 a.m., C.A.'s 6 p.m., Evening Worship 7 p.m., W.M.C.'s Tuesday 10 a.m., Mid-week Service Wednesday 7 p.m., 429-5050.

**ROCKLAND ASSEMBLY OF GOD**  
Edward Moody, pastor. Services Wednesday 7 p.m., Sunday Morning 9:45 a.m., Sunday Evening 6 p.m., Women's Meeting Thursday 10 a.m.

**SHADY GROVE ASSEMBLY OF GOD**  
West of Woodville Sunday School 10 a.m., Evening Worship 6:30 p.m., Wednesday 7 p.m.

**SPURGER ASSEMBLY OF GOD Church**  
Spurger, Sunday School 9:45 a.m., Morning Worship 11 a.m., Evening Worship 7 p.m., Mid-week Wednesday 7 p.m.

**TRINITY CHRISTIAN CENTER**  
Hwy 190 West, Sunday School 9:45 a.m., Wednesday 10:30 a.m., Evening Service 6 p.m., Bible Study Wednesday 7 p.m., Pastor Gary Adams.

**ADVENTIST**  
**SEVENTH DAY ADVENTIST CHURCH**  
1 mile South of Warren, Road Elder Alvin Flowers. Services: Sunday School 9:45 a.m., Sabbath School 10:15 a.m., Tuesday night Prayer Meeting 7 p.m.

**CHURCH OF CHRIST**  
W.M. Imhoffman, minister. Located 15 miles east of Woodville on Hwy 190. Sunday Bible Study 9 a.m., Worship 10 a.m., and 6 p.m., Wednesday Bible Class 7 p.m., 281 1278.

**PINE STREET CHURCH OF CHRIST**  
604 Pine Street, corner Hwy 283 and Perdue W. Ken McLenore, Evangelist. Sunday, 9:45 a.m. Bible study, 10:30 a.m. and 6 p.m. worship services. Wednesday, 7 p.m. Bible study. 283-7534.

**HILLTOP CHURCH OF CHRIST**  
Off FM 1013 Beaumont Hill, Evangelist Anthony Allen. Sunday Services, Bible Study 10 a.m., Worship 11 a.m., Evening Worship 5 p.m., Wednesday Prayer Bible Study and singing.

**WOODVILLE CHURCH OF CHRIST**  
Gary Litch, Minister. Hwy 190 West, Sunday Bible School 9:30 a.m., Morning Worship 10:30 a.m., Evening Service 6 p.m., Wednesday Bible Class 7 p.m., Office 283-9977, Home 283-7112.

**WARREN CHURCH OF CHRIST**  
Minister, Roger Thompson, P.O. Box 421, Warren, Tx 77664, Phone 409-547-785 or 547-3664.

**CHRISTIAN**  
**FIRST CHRISTIAN CHURCH**  
Disciples of Christ J.R. Johnson, minister, 109 Charton Church School 9:45 a.m., Worship 10:45 a.m., other meetings as announced.

**LUTHERAN**  
**FAITH LUTHERAN CHURCH**  
704 W. Holly, Woodville 783-7171, Worship Service 9 a.m., Sunday School 10:15 a.m., Wm. Sager, pastor 283-7863. Dial A Devotion 283-7950.

**EPISCOPAL**  
**ST. PAUL'S EPISCOPAL CHURCH**  
The Rev. Mark Seitz, Vicar. Sunday Services 9:30 a.m., Sunday school 9 a.m., church located 1 mile west on Hwy 190. Phone 409-283-3710. Visitors Welcome.

**CATHOLIC**  
**OUR LADY OF THE PINES CATHOLIC CHURCH**  
Rev. Patrick O'Connell, pastor, 1601 Pine St. Hwy 287 Mass Schedule: Saturday 4:30 p.m., Sunday 9 a.m., Tuesday thru Friday 7:30 a.m., Monday Communion Service 7:30 a.m., C.C.D. Classes Sunday 10:15 a.m., (The Catholic Community of Woodville will celebrate Mass at 6:00 p.m. each Saturday at the United Methodist Church on Hwy 69. For more information call Our Lady of the Pines 283-5367.)

**METHODIST**  
**CADE MEMORIAL UNITED METHODIST CHURCH**  
Synnor Thompson, pastor. Worship Service 11 a.m., Evening Worship 6 p.m., Church School 10 a.m., Mt. Hope Church Service 11 a.m. (4th Sunday).

**WYNN'S CHAPEL FIRST CON. METHODIST**  
Rev. J. Davis, pastor. Sunday School 10 a.m., Worship 11 a.m., Located 2 1/2 miles west of Colmesneil off FM 1746. 281 871.

**HOPEWELL CONGREGATIONAL METHODIST**  
Rev. John McKee, pastor. 281 7549 Services Sunday, 10 a.m. and 6:30 p.m., Seven miles east of Woodville on Hwy 190.

**SPURGER UNITED METHODIST CHURCH**  
Rev. Beverly Ward, pastor. Sunday morning worship at 9 a.m. Church School at 10:15 a.m.

**WARREN UNITED METHODIST CHURCH**  
Rev. Beverly Ward, pastor. Sunday School 9:45 a.m., Morning Worship 11 a.m.

**WOODVILLE UNITED METHODIST CHURCH**  
Rugene Hasterly, pastor. Sunday School 9:45 a.m., Morning Worship 10:50 a.m. UMY Meeting 5:10 p.m.

**LATTER DAY SAINTS**  
**CHURCH OF JESUS CHRIST OF LATTER DAY SAINTS**  
Hwy 92, Fred, Sunday Morning Services 9:00-10 a.m., Women's Relief Society 10:11 a.m., Sabbath School and Priesthood 11-12 noon, Sacrament Meeting Branch President Robert L. Hinson.

**CHURCH OF JESUS CHRIST OF LATTER DAY SAINTS**  
Woodville, Priesthood 11 a.m., Sunday School 10 a.m., Sacrament Meeting 9 a.m., Branch President Gordon McCabe.

**PENTECOSTAL**  
**FIRST PENTECOSTAL CHURCH OF FRED**  
Rev. Jerry L. Peck, pastor. Services Saturday 7 p.m., Sunday 10 a.m. and 7 p.m., Wednesday 7 p.m.

**SPURGER UNITED PENTECOSTAL**  
Thomas Hall, pastor. Sunday School 10 a.m., Sunday night Evangelist Service 6:30, Wednesday Bible Study 7 p.m.

**WARREN UNITED PENTECOSTAL CHURCH**  
C. F. Davis, pastor. Sunday School 10 a.m., Sunday night Evangelist Service 7:30 p.m., Wednesday night Evan-gelistic Service 7:30 p.m.

**WOODVILLE UNITED PENTECOSTAL CHURCH**  
R.L. Magheeh, pastor. West Bluff, Sunday 10 a.m., Bible lessons for all ages 7:30 p.m., Worship A Evangelistic Thursday 7:30 p.m. Prayer and Bible Study.

**NON-DENOMINATIONAL**  
**GOSPEL LIGHTHOUSE CHURCH**  
Durrwood Cox, pastor. One mile east of Woodville on Town Bluff Road. Sunday School 9:45 a.m., Morning Worship 10:45 a.m., Evangelistic Rally 6 p.m., Wednesday Service 7:30 p.m.

**HAMPTON FULL GOSPEL CHURCH**  
Rev. James T. Loving, pastor. Sunday School 10 a.m., Morning Worship 11 a.m., Sunday night 7 p.m., Wednesday night 7 p.m., Two miles west of Chester on Hwy 287.

**WOODVILLE CHURCH OF THE NAZARENE**  
Davy Brockmeier, pastor. 3 miles north of Woodville on Hwy 69. 283-7836. Sunday School 10 a.m., Worship 11 a.m., Special Childrens Church 11 a.m., Bible Studies on Saturdays and Wednesdays. Call for details.

**RIVER ACRES FULL GOSPEL CHURCH**  
Sheffield Terry, pastor. Wednesday night 7 p.m., Sunday Services 2 p.m., Rev. Chas. East, Pastor.

# Church Services

**BAPTIST**  
**FIRST BAPTIST CHURCH**  
Warren, Kirtland Caudin, pastor. Sunday School 9:45 a.m., Morning Worship 11 a.m., Church Training 6 p.m., Evening Worship 7 p.m.

**FIRST BAPTIST CHURCH OF WOODVILLE**  
Dr. Raymond Parker, pastor. Corner of Wheat and Charlton, 283-2589. Sunday School 9:45 a.m., Worship Service 10:50 a.m. at 17 p.m., Sr. High/College & Jr. High Chorus 4:30 p.m., 4-year-old grade Children's Choir, Sunday 6 p.m., Adult Choir, Wednesday 7:45 p.m., Melody Makers, Tuesday 10 a.m., Prayer Meeting and Bible Study Wednesday 7 p.m.

**FIRST BAPTIST CHURCH OF COLMESNEIL**  
Pastor, Forest Owens, Doyle Cowart, Minister of Music, Youth & Education, Sunday School 9:45 a.m., Worship Service 11 a.m., Church Training 6 p.m., Wednesday Prayer Meeting 7 p.m., Evening Worship 7 p.m., Wednesday W.M.U. 6 p.m.

**FIRST BAPTIST CHURCH OF DOUCETTE**  
Jack Minyard, pastor. Sunday School 9:45 a.m., Morning Worship 11 a.m., Evening Worship 6 p.m., Wednesday Prayer Service 7 p.m.

**FIRST BAPTIST CHURCH OF ILLUSTRATED**  
Henry Shettle, pastor. Sunday School 9:45 a.m., Morning Worship 11 a.m., Training Union 6 p.m., Evening Worship 7 p.m., W. Tuesday Prayer Meeting 7 p.m.

**FIRST SHILOH BAPTIST CHURCH**  
Services First Sunday each month beginning at 10:45. Rev. Steve Beathall Interim Pastor.

**FIRST BAPTIST CHURCH OF SPURGER**  
David Nugent, pastor. Sunday School 9:45 a.m., Morning Worship 11 a.m., Evening Services 6 p.m., Wednesday Service 7 p.m.

**ALONE INDEPENDENT BAPTIST**  
Located 1 1/2 miles North of Doucette on FM 3065. Sunday School 10 a.m. Worship Service 11 a.m. Midweek Prayer Meeting and Bible Study Wednesday 7 p.m. Pastor Buddy McDaniel.

**BETHEL BAPTIST CHURCH**  
Warren, Rev. Bill Fabrigare, pastor. Sunday School 9:45 a.m., Morning Worship 11 a.m., Church Training at 6 p.m., Evening Worship 7 p.m., Prayer Service 7 p.m., Baptist Women (W.M.U.) 9:30 a.m., Thursday.

**BETHANY BAPTIST CHURCH**  
Colmesneil, Rev. C. O. Haddock, pastor. Sunday School 10 a.m., Morning Worship 11 a.m., Evening Worship 6 p.m., Wednesday Prayer Service 6:30 p.m.

**BEECH CREEK BAPTIST CHURCH**  
Rev. Carl Redmon, Jr. Pastor. Sunday School 10 a.m., Morning Worship 11 a.m., Sunday Evening Worship 6 p.m., Wednesday Prayer Service 7 p.m., Everyone Welcome.

**CALVEY BAPTIST CHURCH**  
Rev. Jimmy Dean, pastor. Sunday School 9:45 a.m., Morning Worship 11 a.m., Evening Worship 6 p.m., Mid-Week Services Wednesday 7 p.m.

**CAMP ZION BAPTIST CHURCH**  
Doucette, Rev. I.S. Hunt, pastor. Sunday School 9:45 a.m., Morning Worship 11 a.m., Baptist Training Union (BTU) 5 p.m., Evening Worship 6 p.m., Mission/Brother hood Monday 7 p.m., Prayer Meeting Wednesday 7 p.m., Senior Choir Rehearsal 2nd & 4th Saturdays, Jr. Choir Rehearsal 1st & 3rd Saturdays.

**CANYON CREEK BAPTIST CHURCH**  
Chester, G.M. Standley, past. Sunday School 10 a.m., Morning Worship 11 a.m., Church Training 5 p.m., Evening Worship 6 p.m., Wednesday Services 7 p.m.

**CHICKOKER BAPTIST CHURCH**  
4th Sunday of each month. Sunday School 10 a.m., Morning Worship 11 a.m., Rev. Ernest Martin, pastor. FM 256 6 miles west of Colmesneil.

**CHIESTER BAPTIST CHURCH**  
Richard L. Bean, pastor. Sunday School 9:15 a.m., Worship 10:45 a.m., Training Union at 5:30 p.m., Evening Worship 6:15 p.m., Sunday Prayer Meeting 7 p.m., Church Activity groups meet every Monday after school.

**COBB MILL ROAD BAPTIST CHURCH**  
Woodville, Delbert Lamb, pastor. Sunday School 10 a.m., Morning Worship 11 a.m., Training Union 6 p.m., Evening Worship 7 p.m., Wednesday night Service 7 p.m., Bible Studies on Saturdays and Wednesdays. Call for details.

**EMMANUEL BAPTIST CHURCH**  
Bro. Arthur Melvin, pastor. Sunday school 10 a.m., Morning Worship 11 a.m., Evening Worship 7 p.m., Wednesday Evening Worship 7 p.m.

**EMMANUEL BAPTIST CHURCH**  
2 miles north of Doucette on Hwy 99. Sunday School 10 a.m., Morning worship 11 a.m., Church training 7 p.m., Prayer meeting, Wednesday 7 p.m., Bro. James L. Bonner, pastor. 837-5750.

**ENON BAPTIST CHURCH**  
Rev. Dorrell Young, pastor. Four miles east of Chester on Hwy 1745. Sunday school 9:45 a.m., Morning Worship 11 a.m., Training Union and Bible Study 5 p.m., Evening Worship 6 p.m.

# Keep Up With Tyler County Community News!

**FAIRVIEW BAPTIST CHURCH**  
Rev. Paul Eaton, pastor, Boyce Grooms, Music Director & Youth Leader. Sunday School 9:45 a.m., Worship Service 11 a.m., and 7 p.m., Tuesday Youth meeting 5 p.m.

**HARMONY BAPTIST CHURCH**  
Dale Carter, pastor. Sunday School 10 a.m., Worship Services 11 a.m., Evening Worship 7 p.m., Wednesday Services 7 p.m.

**HEBRON BAPTIST CHURCH**  
Henry Davis, pastor. FM Road 2827, 5 miles south of Warren on US 69, 7 miles west on FM 2827. Sunday School 9:30 a.m., Worship Service 11 a.m., Evening Service 6:30 p.m.

**KATY BAPTIST CHURCH**  
Colmesneil, Duff Patrick, pastor. Sunday School 10 a.m., Worship Service 11 a.m., (Interpreter for the Deaf Wednesday Service 7 p.m., (Interpreter for the Deaf available).

**REDFAY MISSIONARY BAPTIST CHURCH**  
FM 1943, 10 miles east of Warren, 6 miles west of Fred. Sunday School 9:45 a.m., Morning Worship 10:45 a.m., Training Service 5:30 p.m., Evening Worship 6:30 p.m., Tuesday WMA 1 p.m., Wednesday Prayer Meeting 7 p.m.

**MT. CARMEL BAPTIST CHURCH**  
Jack Lowellen, pastor. Sunday School 9:45 a.m., Morning Worship 11 a.m., Training Union 6 p.m., Evening Worship 7 p.m., Wednesday Prayer Meeting 7 p.m.

**MOUNT NEBA BAPTIST CHURCH**  
Rev. W.C. Haynes, pastor. FM Road 1943, 13 miles east of Warren. Sunday School 10 a.m., Morning Worship 11 a.m., Evening Worship 6:30 p.m., Wednesday Prayer Service 7 p.m.

**MOUNT OLIVET BAPTIST CHURCH**  
John Spanhans, past. Hwy 92, Fred. Sunday School 9:45 a.m., Morning Worship 11 a.m., Evening Services 6 p.m., Wednesday Service 7:30 p.m., Royce Grooms.

**MT. SINAI BAPTIST CHURCH**  
Holly Park Community Pastor, Ferguson Duff, Spurger.

**NEW HOPE BAPTIST CHURCH**  
Pastor. Church services every Sunday.

**NEW SHILOH BAPTIST CHURCH**  
West of Woodville. Rev. pastor Sunday School 9:45 a.m., Morning Worship 11 a.m., Evening Worship 6 p.m.

**OAK GROVE BAPTIST CHURCH**  
Colmesneil, G.W. Patrick, pastor. Sunday School 10 a.m., Morning Worship 11 a.m., Evening Worship 7 p.m.

**PLEASANT HILL BAPTIST CHURCH**  
Rev. C. O. Haddock, pastor. Sunday School 9:15, Worship Service 11 a.m., BTU at 5 p.m., Evening Service at 7 p.m., Prayer Meeting Wednesday 7 p.m.

**PLEASANT VALLEY BAPTIST CHURCH**  
G. S. Beady, pastor. Tyler Sunday Song Service 10:30 a.m., Worship Service 11:15 a.m., H. L. Castlow, Song Director.

**ROCKLAND BAPTIST CHURCH**  
Roy Tompkins, Music Director. Sunday School 10 a.m., Worship Service 11 a.m., Evening Worship 6 p.m., Mid-week Prayer Service Wednesday 7 p.m., Ken Fretland, pastor.

**ROCKY SPRINGS BAPTIST CHURCH**  
Worship 11 a.m., Training Union 5 p.m., Evening Worship 6 p.m., Wednesday Prayer Meeting 6:30 p.m.

**SHIPPARD PERRY BAPTIST CHURCH**  
Walter Ray Cox, pastor. Sunday School 10 a.m., Morning Worship 11 a.m., Evening Worship 6 p.m., Wednesday 7 p.m., FM 1013 miles east of Spurger on Neches River.

**SPRING HILL BAPTIST CHURCH**  
Woodville, Rev. Frederick Mattox, Pastor. Sunday School 9:30 - Morning Worship 11:00 - Evening Worship 5:00 Tuesday Teaching Service 6:10.

**SOUTH SPURGER BAPTIST CHURCH**  
Sunday School 10 a.m., Worship Service 11 a.m., Evening Service 6 p.m., Evening Worship 6:45 p.m., Church activity groups meet every Monday after school.

**SUNSET MISSIONARY BAPTIST CHURCH**  
Bro. John Collins, pastor. FM 1943, Warren. Services every Sunday 10 a.m., Evening Services 6 p.m.

**TRIBE VINE BAPTIST CHURCH**  
One mile east of Doucette. Sunday School 9:45 a.m., Worship 11 a.m., Lord's Supper Sunday 6:30 p.m., Monday Mission 4 p.m., Tuesday YWCA 6:10 p.m., Wednesday Prayer Meeting, teachers 7 p.m.

**WALDOY BAPTIST CHURCH**  
Rev. Gary Craven, pastor. East of Hwy 92 on FM 1746 (Old Town Bluff Rd.) Sunday School 9:45 a.m., Morning Worship 11 a.m., Training Union 6 p.m., Evening Worship 7 p.m., Wednesday Prayer Meeting 7 p.m.

**WHITE OAK BIBLE BAPTIST MISSION**  
Sunday School 9:45 a.m., Morning Worship 11 p.m., Evening Worship 6 p.m., Don Calhoun, pastor.



**Brookshire Bros**  
THE BEST FOR LESS

**Fairway Foods**  
WE WANT TO BE YOUR STORE

**Magnolia Drive-In Grocery**  
North • West • South Woodville

**Davis Food Market**  
547-3339 Warren

**KNAPP SALES**  
WOODVILLE

**CITIZENS STATE BANK**  
A DIV OF FEDERAL RESERVE SYSTEM Since 1920

**THE WOODVILLE INN**

**LARRY TRIST**  
99 S. GIBBY STREET WOODVILLE

## ATTEND THE SERVICES OF YOUR CHOICE SOON

**A & M Motor Co., Inc.**  
283-2534 Woodville

**Jarrott's Pharmacy**  
"Serving Tyler Co. Since 1952"  
205 S. Magnolia Woodville

**EDWARDS FUNERAL HOME**  
JAMES DANIELS MRS. JOE EDWARDS GEORGE STANLEY WILLIAM E. WIGHAM

**Share Your Church News In By 5 p.m. Friday**

**Need Nursing Home Care?**  
You owe it to your loved one to visit Holiday Home before making a final decision. We're in a class of our own. Holiday Home Manor 1201 Cardinal Drive Woodville, Texas 75797 (409) 283-3397

**WALMART**  
Hwy 69 S., Woodville, Tx.

**Woodville Convalescent Center**  
102 N. Beach Street Woodville  
Living with Dignity - Aging with Unfolding - Caring with Pride.

**\$7.50 in Tyler County**  
**\$8.50 in Folk, Angellina, Jasper & Hardin Counties**  
**\$9.50 in Other Texas Cities**

**\$10.50 in Other States**  
**\$12.50 Overseas**

Name \_\_\_\_\_  
Address \_\_\_\_\_  
Town \_\_\_\_\_ State \_\_\_\_\_ Zip \_\_\_\_\_

Enclosed is my check for  
Mail this coupon with payment to:  
Tyler County Booster, P.O. Box 248, Woodville, TX 75798







**GROCERY Special**

**COCA COLA PRODUCTS**

2 LITER

**99¢**

**GROCERY Special**

MARYLAND CLUB COFFEE 12 CAN \$2.99

ADOLPHUS RICE 48 OZ BOX 79¢

HABISCO PREMIUM SALTINE CRACKERS 1 LB BOX \$1.09

LIGHT CRUST CORN BREAD MIX 4 OZ POUCH BUY 1 GET ONE FREE

PALMOLIVE LIQUID DISH DETERGENT 23 OZ LEMON LIME 89¢

**GROCERY Special**

**NEW ORLEANS FRENCH BREAD**

1 LB LOAF **2/99¢**

**GROCERY Special**

HYDE PARK TEA BAGS \$1.99

GOLD MEDAL FLOUR 5 LB BAG 99¢

CARNATION EVAPORATED MILK 12 OZ CAN 2/\$1.00

RED & WHITE TUNA 5 OZ CAN 2/\$1.00

EAGLE BRAND MILK 12 OZ CAN \$1.19

**GROCERY Special**

HYDE PARK PAPER TOWELS

LARGE ROLL **2/89¢**

**GROCERY Special**

MIRACLE WHIP SALAD DRESSING 16 OZ JAR \$1.69

DEL MONTE TOMATO SAUCE 16 OZ 4/\$1.00

KRAFT MAYONNAISE 16 OZ JAR \$1.69

DURA FLAME FIREPLACE LOGS GIANT SIZE \$1.79

TIDY'S VIENNA SAUSAGE 1 OZ 2/\$1.00

**GROCERY Special**

HYDE PARK VEGETABLES

SWEET PEAS, CUT BEANS, FRENCH STYLE SLICED, WHOLE KERNEL & CREAM STYLE CORN

**3/99¢**

**DAIRY FAVORITES**

HYDE PARK 1% MILK

GALLON **\$1.69**

HYDE PARK ORANGE JUICE 1/2 GALLON 99¢

ROTEL PROCESSED CHEESE SPREAD 2 LB \$2.99

PILLSBURY'S BEST COOKIES 20 OZ \$1.89

MUSIC CITY FRUIT DRINK ASSORTED GALLON 99¢

**Fairway Foods**

1111 SOUTH MAIN ST. WIA

WE WANT TO BE YOUR STORE

WEDNESDAYS SENIOR CITIZEN 5% DISCOUNT!

WE ACCEPT USDA FOOD STAMPS!

WE ACCEPT WIC CARDS!

**PRODUCE Special**

FRESH BROCCOLI BUNCH 69¢

FRESH CAULIFLOWER HEAD **89¢**

GREEN CABBAGE LB 29¢

WASHINGTON STATE PEARS LB 49¢

GREEN BELL PEPPER 6 FOR \$1.00

LEMONS 8 FOR \$1.00

RED ROME RED DELICIOUS APPLES 3 LB BAG \$1.39

HYDE PARK

PURE CORN GRANULATED SUGAR

3 LB **99¢**

(LIMIT 1 PER \$10 PURCHASE)

QUALITY BRAND NAME

**Frozen Foods**

BLUE BELL ICE CREAM 1/2 GALLON ALL RIMS **\$2.59**

TREE TOP APPLE JUICE 12 OZ CAN 95¢

CARNATION BON BONS ASSORTED 20 CT 2/\$3.00

HYDE PARK PIZZAS ASSORTED 10 OZ 79¢

BANQUET FRUIT PIES ASSORTED 20 OZ

**MEAT Special**

BEEF FAMILY PACK

**ROUND STEAK**

LB **\$1.69**

**MEAT Special**

BEEF BONELESS RUMP OR PIKES PEAK

**ROAST**

LB **\$1.79**

**MEAT Special**

BEASLEY'S SMOKE HOUSE ALL FLAVORS

**SAUSAGE**

LB **\$1.79**

**MEAT Special**

FRYER

**LEG QUARTERS**

APPX. 10 LB BAG LB **49¢**

COCA COLA 6 PK 12 OZ CANS **99¢**

WITH ONE FILLED THIRSTY SAVER CARD

RUSSITT POTATOES 5 LB BAG **99¢**

WITH ONE FILLED THIRSTY SAVER CARD

HYDE PARK HOMO MILK 1/2 GALLON **54¢**

WITH ONE FILLED THIRSTY SAVER CARD

**DOUBLE STAMPS ON TUESDAY**

CRISCO OIL 48 OZ **\$1.99**

WITH ONE FILLED THIRSTY SAVER CARD

FRESH BAKED BREAD 1 1/2 LB LOAF **12¢**

WITH ONE FILLED THIRSTY SAVER CARD

PARLEY MARGARINE 1 LB QUARTERS **9¢**

WITH ONE FILLED THIRSTY SAVER CARD

**MEAT Special**

BEEF

**CUTLETS**

LB **\$1.99**





**THE PLACE CAFE**  
 UNDER NEW MANAGEMENT  
 CHERRY CONNER  
 837-51-1111  
 Hwy 69 South Colmesneil  
**GOOD FOOD** **GOOD COFFEE**  
 Breakfast Special 1.99  
 Open 6 Days A Week  
 5 A.M. Friday & Saturday  
 Monday Thru Sat 7AM - 6PM  
 Closed Sunday  
**HUNTERS WELCOME!!**

**DON'T LITTER**  
 Be A Good Sport  
 Help Keep Our Forest Clean!  
**TYLER COUNTY BOOSTER**

**JONES COUNTRY MUSIC RESTAURANT**  
 Delicious Food & Drinks  
 Football In The Club  
 Live Music Friday & Saturday Nights  
 Starting Nov. 28 Johnny Guldry From Houston  
 Hours: Mon Thurs 10am 8pm  
 Friday 10am 12pm Saturday 10am 1am  
 Sunday 10am 6pm  
**JONES COUNTRY MUSIC PARK**  
 GEORGE JONES

**AB GUN SHOP**  
 A Full Line Gun Shop  
 Everyday Low Prices On New & Used Rifles, Shotguns & Handguns  
 \* Repair \* Sightings \* Parts \* Hard-to-Find Ammunition  
 "If You Want It, I Have It Or I Can Get It"  
**SMALL APPLIANCE REPAIR**  
 283-5972  
 Hwy 69 South



**1st Prize: 30-30 Lever Action Rifle!**  
**2nd Prize: Bushnell Binoculars**  
 from Wal-Mart  
 Insta Focus 715  
 Falcon Design  
 Model 113410 C  
**3rd Prize: Pizza For Two At The WOODVILLE INN**  
 COURTESY EAST TEXAS LAND CO. & THE TYLER COUNTY BOOSTER

**EDWARDS FUNERAL SERVICE**  
 LIFE INSURANCE COMPANY  
 Funeral Directors:  
 JAMES DANIELS, GEORGE STANLEY  
 MRS. JOE EDWARDS-BILL WIGHAM  
 113 W. Holly 283-2511

**BOYKIN LUMBER & SUPPLY**  
 Everything You Need Is At  
 283-3731  
 Beaumont Highway

**Suburban Propane**  
**PARAS**  
 Hwy 69 S. Woodville  
**HUMDINGER SALE** Pre-Holiday  
 Close Out On Gas Grills 176<sup>00</sup>-299<sup>00</sup>  
 Roper Ranges 319<sup>00</sup>-444<sup>00</sup>  
 Fish-Fryers 39<sup>95</sup>-79<sup>95</sup>  
 Dearborne Heaters 189<sup>95</sup>-279<sup>95</sup>

**SAVE UP TO 15%**  
 on batteries for cars, trucks and farm equipment  
**NICHOLS FARM & RANCH SUPPLY**  
 Hwy. 69 South 283-3136 Woodville

**FOLLOW THESE SAFETY RULES:**  
 1. Guns should always be unloaded when not in use.  
 2. Always be sure that action and barrel are clear of obstructions and that ammunition of the proper size is being used.  
 3. Always keep chamber empty or on safety until you are ready to shoot.  
 4. Be sure of your target before you fire, acquit yourself with your intended game's features.  
 5. Don't climb a fence or tree or jump a ditch with a loaded gun. Keep muzzle pointed away from yourself and others, and pointed up in the air.  
**Fairway Foods**  
 WE WANT TO BE YOUR STORE

**FREE 75,000 MILE 75 MONTH SERVICE CONTRACT**  
 With Every New **1986 FORD CAR OR TRUCK**  
 PURCHASED IN DECEMBER AT  
**KNAPP SALES**  
 547-3339 Warren

**Flo's Landmark Restaurant & Grocery**  
 (Formerly CA's) 283-7726  
 Located At Dam B  
 Open 5:30-8:37-51  
**BREAKFAST SPECIAL!**  
 2 Eggs 2 Pancakes 2 Bacon  
 Free Coffee/Breakfast 2.10  
 Hot Lunch Specials 11am - 2pm 2.75  
 Also Serving Seafood Cajun Entrees Steaks

**Country Basket SALE \$1.89**  
 Good At Motel Enterprises DO's Only  
 NOW WITH FOUR NEW SAUCES

**Tyco Feed Company**  
 202 E. Pavillion 283-2106  
 We Carry:  
 All Purina Feed Products  
 Lone Star Feed  
 Plenty Of Corn For Your Deer Feeders  
 • Purina • Lone Star Dog Feeds

**Red Wings**  
 FOR GENERATIONS... Headquarters  
 A Great Hunting & Work Boot  
 This 8" full-grain, oil-tanned leather boot sets the pace in wear, comfort and fit. From the soft, padded top band to the oil-resistant Neoprene cushion, crepe sole, and heel, you'll see why this one continues to be a favorite boot.  
**DAVIS FOOD MARKET**  
 547-3339 Warren

**Hunters.... Make This Year's Buck Pay Off!!!**  
 Enter The **Tyler County Booster 12th Annual Best Rack Contest!!**  
 Here are the rules. **How to measure your Contest Winner:**  
 A. Number of points times two  
 B. Length of both horns from base to tip around outside corners  
 C. Spread at widest point  
 Each inch equals 1 point! Person with highest total points wins first place. (Antler point must be 1/2" to qualify)  
**PRIZES:**  
 1st 30-30 Rifle  
 2nd Bushnell Binoculars  
 3rd Pizza for two at the THE WOODVILLE INN

**We Hope Your Hunting Trip Is Successful And Enjoyable!**

**A-Z DISCOUNT AUTO PARTS**  
 Truck & Trailer Parts Foreign Parts CB's Stereo's  
**DAVIS FOOD MARKET**  
 547-3339 Warren

**West Magnolia Grocery**  
 Ice Crushed Cube Block Picnic Supplies  
**Fisher's BAIT-EQUIPMENT TACKLE**  
 1109 W. Bluff Woodville

**CAS TEXAS LAND CO.**  
**THE BUCK STOP HERE!**  
 AUTOMATICALLY WITH A **HEHMAN AUTOMATIC FEEDER**  
 409-283-5252  
 210 S. Magnolia 283-5252

**Promark Sports Gloves & Mittens**  
 Reg. 6.96  
**5.00**

**WAL-MART**  
**Silent Flame**  
 WOODBURNING STOVE  
**A Beautiful Way To Save On Your Heating Costs**  
 TYLER COUNTY TRACTOR, INC.  
 283-5222  
 510 S. Magnolia Woodville

**WE NOW HAVE JOY DOG FOOD**  
 14.50  
 \* DEER FEEDERS 79<sup>95</sup>  
 \* DEER CORN  
 \* HUNTING SUPPLIES  
**FARMER'S FEED & HARDWARE**  
 600 N. Magnolia

**1985 HONDA PRELUDE, FUEL INJECTION, EVERY AVAIL. OPTION. PERFECT CONDITION, CALL 283-3696 DAYS or 283-3984 AFTER 7pm.**

# Hillister News

**BENEFIT SALE FOR THE TYLER COUNTY NURSES TRAINING PROGRAM**  
 Dec. 6th & 7th (Sat. & Sun.)  
 Dec. 13th & 14th (Sat. & Sun.)  
 8:00-4:30 Each Day  
 inside at the  
**Fox Flea Market on Hwy 287 (1/2 Way Between Hillister & Warren)**  
 Dresses, Suits & Much More!!

Guests of Mr. and Mrs. James Foxworth on Thanksgiving day were the son Dearl and family with the pilot of San Antonio, Paul Walker of Woodville, Odix and Jewel Carroll of Silsbee. Mr. and Mrs. J. G. Briley of Warren, Dale Briley and family of Vidon. On Wednesday the granddaughter Darlene Rawls with the son Danny Jr. and a friend Miss Broussard of Houston visited them.

Visiting Mr. and Mrs. Sidney Holt on Thursday were the son Ronald and wife JoAnn and the grandson Sidney Holt and wife Linda with Seth of Houston.

Mr. and Mrs. Olen Tucker were happy to have with them during the holidays the daughter Ann Heisner and family of Houston, the son Phil and his daughter Megan of Beaumont.

Mr. and Mrs. J. W. De Ramus were in Livingston Wednesday afternoon to attend the funeral service of Dr. T. I. Gardner.

Mr. and Mrs. B. J. Smith, Ruby Ann and Charles Martin with Bryan drove to Hemphill Friday to see B. J.'s parents Mr. and Mrs. B. J. Smith Sr.

Here for Thanksgiving with Ben Whitaker were his daughter Sallie and husband Rubin Bean a grandson Jimmy Bean and family of Port Neches and the son Gary Whitaker and family of Ase.

Visiting Mrs. Bessie Huggins during the holiday weekend were the recovering from Smith drove to Port Neches Sunday evening to see the daughter Mrs. Lloyd and Betty Jones of West Lake, La. Mar-Harmony of Irving enjoyed having their son Floyd of Houston with them Thursday through Sunday, the daughter and husband of Woodville, Newman of Pt. Neches and Grandson and wife Mr. and Mrs. Darrel Newman of Groves were here Sunday.

Holiday guests of Mr. and Mrs. H. H. Jones were Mr. and Mrs. Toney Vitor and Mr. Mrs. Kerry Vitor of Nederland also Mr. and Mrs. Keith Vitor of Houston.

Mr. and Mrs. Howard Mark Barnett and wife Chelsea of Gates in Paris Ark. visiting with a friend Floyd Vogue here Sunday.

Mrs. Evelyn Pearty on of Waco joy of having her mother Thomas Gardner of Livingston spent a few days with his grandparents Mr. and Mrs. J. W. De Ramus last week.

Mrs. Ethel Read had with her for Thanksgiving the son David and family, the daughter Beth Coward and family of Houston, daughter Evelyn Lockert and family of Dallas, Wanda Hickman and family of Tyler, Peggy Phillips and family of Beaumont, son Ben Read and family of Warren and James and Jerry Read of Kountze.

Mrs. Lorene Lavette of Warren is here spending a few days with her aunt Mrs. Mary Miller while

**FACE COUPON**

**20% OFF**

ANY SINGLE ITEM IN STOCK (Except Major Appliances)

Good THURSDAY 5:30pm-8pm

SULLIVAN'S - 211 West Bluff ONLY

**WE NOW HAVE**

LIVE LOUISIANA RIVER CATFISH  
 FRESH CAMERON OYSTERS

**837-5355**

**TYLER COUNTY FRESH SEAFOOD**

Hwy 69, Colmansoll

We Accept Food Stamps  
 Open 7 Days A Week

**ANTIQUA AUCTION**

Saturday Dec. 6 6-10pm

**10' Container of Furniture & Glassware**

Groveton Auction House

Auctioneer: Larry Grammer  
 TYS 105-1106  
 (409)612-2191 612-1233

**SNACK BAR**  
 Viewing Time: All Day Of Sale

**REAL ESTATE AUCTION**


Farm Home & 13 Acres  
 Pasture Land Located in Flat Prairie Community near Groveton to be sold by Auction Wed. Dec. 10, 1:30pm at Groveton Auction House on the square.

Min. Bid \$30,000 w. \$5,000 Earnest Money on Sale Date.

Auct. Jerry Grammer TYS 01, 0025  
 (409)283-2900 (409)288-5200

Larry Grammer TYS 105-1106  
 (409)612-2195

**ONLY 21 SHOPPING DAYS TIL CHRISTMAS**



**The Angelina College Roadrunner Club**  
 presents  
 from Branson, Missouri

**THE BALD KNOBBERS**  
 HILLBILLY JAMBOREE SHOW

**Thursday, December 4, 1986**  
**7:30 P.M.**  
**Lufkin, Civic Center**  
 Ticket Info- 409-853-2211

**NOW RE-OPENED!**  
 Tuesday-Saturday  
 10am-2pm

**OF TOWN BLUFF** 429-3729

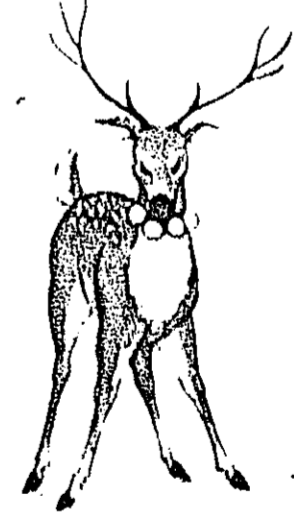
Featuring:

Imported Items From Bethelom...  
 Carvings, Bibles, Jewelry  
 Also Ceramics & Specially Blended Potpourril

# THE PERFECT GIFT

Here is the solution for the person who has everything

# GIVE



## A SUBSCRIPTION TO THE BOOSTER



**\$7.50 in Tyler County** **\$9.50 in Other States**  
**\$8.50 in Polk, Angelina, Jasper & Hardin Counties** **\$10.50 Overseas**

This gift subscription is for:

**Name** \_\_\_\_\_  
**Address** \_\_\_\_\_  
**Town** \_\_\_\_\_ **State** \_\_\_\_\_ **Zip** \_\_\_\_\_

Enclosed is my check for  
 Mail this coupon with payment to:  
 Tyler County Booster, P.O. Box 48, Woodville, TX 75878