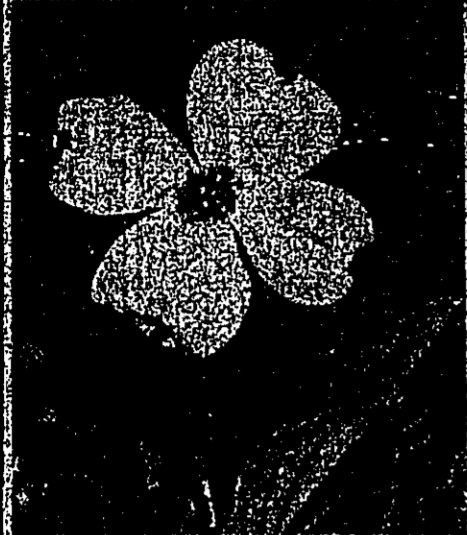


Hoag & Sons Bindery  
2730 Alpha St.  
Lansing, MI 48910  
EXP. 11/30/99 DO  
SUBSCRIBE FOR A FRIEND! 293-2568

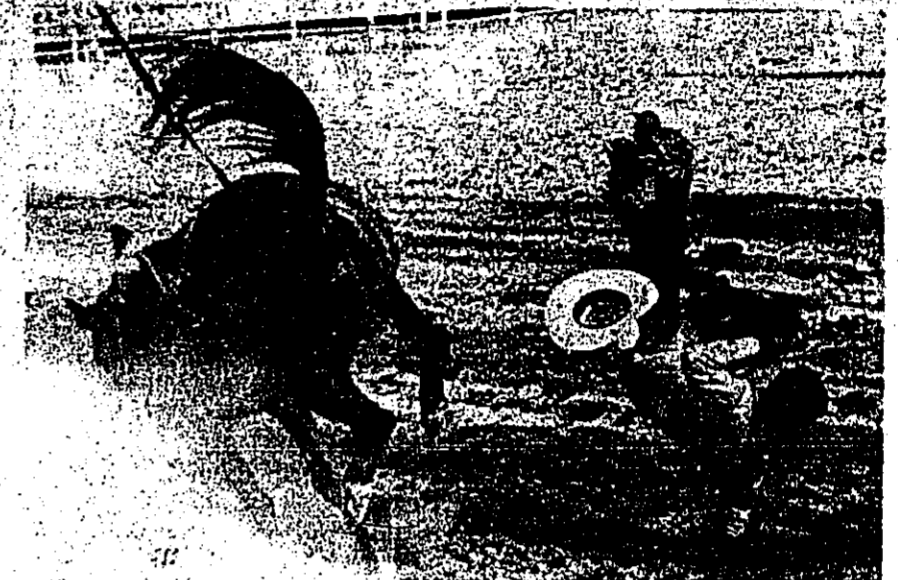


### Sweetheart

CHOSEN SWEETHEART: Amber Bell, of Warren, was chosen the 1987 Western Weekend Sweetheart as part of the official Rodeo activities Saturday night.

### New Starting Line

This year's Dogwood-Woodville High School Run has been changed. Band Hall. There will be a new highway construction sign directing you to the structure at Heritage VII High School. Parking lot. The starting line to help avoid congestion has been moved to the at the band hall.



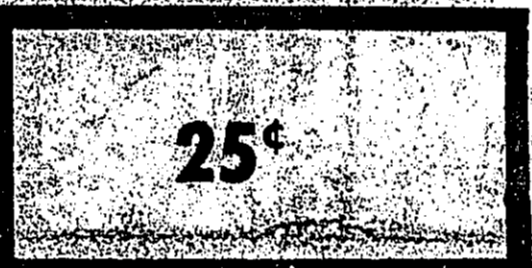
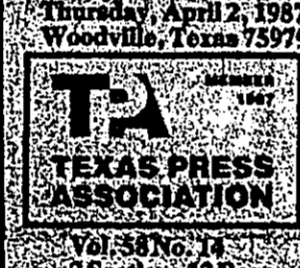
### Western Weekend Rodeo Action

RODEO ACTION: The Tyler County Western Weekend Rodeo action saw a record number of entrants and a record total of proceeds at the gate for the evergrowing event. Officials said the large number of trail-riders added substantially to this year's successful rodeo. Action at night shows bumps and grinds of rodeoing.



# THE TYLER COUNTY BOOSTER

SERVING TYLER COUNTY SINCE 1930



## Davis Issues Bid For Re-Election

TO THE VOTERS OF WARREN'S DISTRICT: Please be informed that I am announcing my candidacy for a position on the Board of the Warren I.S.D. There has been rumors throughout the District comparing this but they are not true. At one point I did consider ending my tenure as a member, but because of some recent develop-

ments I changed my mind. Some major issues that prompted my decision are: 1. Instrumentation of a last minute bond range building program that is being duly considered. 2. Personnel that will face us in the near future and could be vital to our district. 3. Minor issues supporting really that wish to see correct-

ed. 4. Many of my friends have approached me asking that I return. I would like for everyone to know that my opponent and I are friends now and shall be in the future. Probably the big plus that I could add to our District's fifteen years of continuous service. This can be a very important factor in electing the

items previously addressed and more that I did not mention. It is very important that you go to the polls and cast your opinion on April 4. Thanks for allowing me to represent you in our District in the past. I solicit your continuous support in the future. Sincerely yours, Harold Davis

## Segrest Announces For S.I.S.D.

Virgil A. Segrest announces for re-election to Position #1 on the Spurger I.S.D. Board of Trustees in the April 4th election. He is a 38 year resident of Spurger and is employed as a machinist by AmeriPol-SynPol in Ft. Neches. He is President of the Spurger Ex-Student Association and active in The Church of Jesus Christ of Latter

Day Saints. Virgil and Linda have five children: Virgil Jr., Darin, Kay, Jennifer, and Jill. He and his wife have been able to serve on the Spurger School Board. During this time the school has progressed and grown. I also have grown in wis-

dom, knowledge and experience as well as personally. There have been ups and downs as always in such a position, but the rewards are greater, especially when you see our children graduate and their accomplishments. To be a small part of this has been a special and gratifying experience, and I very much would like to continue. It would be very easy

to move to Ft. Neches, eliminating the long drive to work, but I feel my family is better off here in the Spurger School System and among a community of good people. I feel I am qualified to seek re-election at this time and ask for your vote and support on Sat. April 4. Please feel free to call on me any time. Take an interest. Vote!



## Hydropower Project Underway

Proclaiming it "A first for the nation," Assistant Secretary for conservation and Renewable Energy, Donna Fitzpatrick lauded the Town Bluff Hydropower project which was officially dedicated Saturday before a crowd of approximately 500, including

politicians, water resource specialists and a crowd of citizens anxious for the \$20 million project to get underway. Flags from across the United States and around the world provided the colorful backdrop at the Town Bluff Park where officials met with the

Sam Rayburn Joint Municipal Power Agency, the U.S. Army Corps of Engineers and the U.S. Department of Energy. The Town Bluff primary purpose is to re-regulate water from the hydroelectric power station at Sam Rayburn Dam with flood control and water

supply being chief benefits. Corps cost-to-benefit ratios suggest the plant will return \$1.40 for each \$1 spent. The project is called first-of-a-kind because of its cooperative relationship between private enterprise and the government. The project is estimated to be completed in two years.

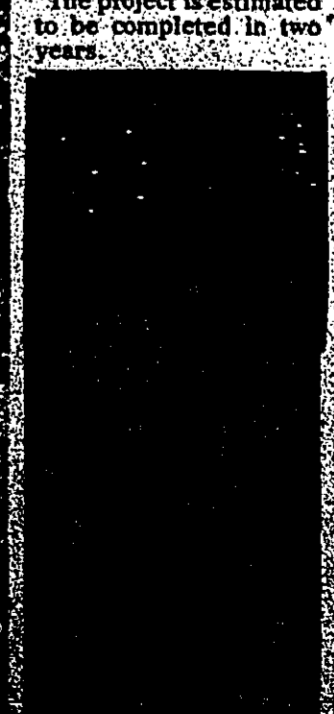
## Chapman In Spurger Race

TO THE FRIENDS AND NEIGHBORS OF THE SPURGER COMMUNITY:

My name is Joe R. Chapman. I will be 50 years old on Saturday, April 4th. I have been employed by the Spurger School for the past 10 years. I am a member of the Spurger Ex-Student Association and active in The Church of Jesus Christ of Latter

Day Saints. I have five children: Virgil Jr., Darin, Kay, Jennifer, and Jill. He and his wife have been able to serve on the Spurger School Board. During this time the school has progressed and grown. I also have grown in wis-

dom, knowledge and experience as well as personally. There have been ups and downs as always in such a position, but the rewards are greater, especially when you see our children graduate and their accomplishments. To be a small part of this has been a special and gratifying experience, and I very much would like to continue. It would be very easy



# PERSONAL & FAMILY accent on

## Shopping With Diane

By: Diane Sitton

The 44th Annual Tyler County Dogwood Festival is just a few days away and all over Tyler County the festival organizers, committees, and participants are busy finalizing plans. Again this year the Festival brings with it a special shopping opportunity. The Big Ticket Arts and Crafts Fair sponsored by the Woodville Business and Professional Women's Club. It will be held in the parking lots of both Citizen's State Bank locations. Booths will be open most of the day and will offer a variety of crafts and merchandise. Don't miss it.

You also won't want to miss the opportunity to shop Tyler County for special high quality festival keepsakes. In providing this opportunity we've found dogwood items made from everything from fine porcelain to cookie dough.

Let's go see. IN CHINA AND PEWTER: If you fancy dogwoods, drop by Sullivan's, 211 West Bluff, and ask Mr. Sally to show you the dogwood glassware, just in. There are three items, all are made from clear crystal and all are adorned with a delicate dogwood-and-butterfly pattern.

The pedestal cake plate has a clear glass cover and makes a special gift. The egg and relish plate has an additional bowl for dip. The round serving platter is 13 inches in diameter. It is versatile and is also an ideal gift item.

Sullivan's also stocks pewter specialty items with a dogwood motif. Some are made from pewter, some from pewter and brass, and some from pewter and other metals. All of the items, however, are handcrafted and made in America. Select from economically priced tins, napkin rings, bookmarkers, book ends, paperweights, or candle holders.

IN CHINA AND PORCELAIN: Dogwood collectors will be impressed by the selection at Warfield's Gift, 210 W. Bluff. Owner Vicki Warfield carries high quality items including porcelain collectors plates made by Kaiser porcelain of West Germany, the oldest and most well known company of its type in the world. The plates are nine inches in diameter and feature a very lovely dogwood pattern.

Candle holders and a round vase, also by Kaiser, are a must for dogwood collectors. There are several items by Letton China including handpainted picture frames, bud vases, mugs, bells, and pin baskets. Some carry white blossoms; others, pink.

Vicki completes her dogwood selection with two German lead crystal bowls. The smaller is suitable for candy; the larger, for fruits or salads.

Stop by today! IN FABRIC: Once again this year the Tyler County Chamber of Commerce is selling caps to commemorate the Tyler County Dogwood Festival. The caps are green and decorated with white dogwood blossoms (in puff print). They are available at the Chamber office in the Woodville Inn, and from Chamber members.

A great way to top off a great event! IN JEWELRY: One of the best ways to enjoy dogwoods all year long is through jewelry. J. B. Best and Company presently has Dogwood earrings in stock. They are clip-ons and feature white dogwoods in enamel over a gold background.

Hurry while they last! FROM THE KITCHEN: Are dogwoods edible? You bet they are. At least the blossoms from Edna Collier's kitchen are edible, that is.

Edna offers all kinds of baked goods including cakes and cookies. At this time of year she decorates most with sugar dogwoods she makes herself. The blossoms are as authentic as possible and include accents in the center and on the tops of each petal. On cakes she arranges them in a spray. Edna takes by special order only. Cakes must have buttercream frosting in order to be decorated with these unique dogwoods. Call her today at 283-2481.

## Sitton Authors New Garden Book

The new book HERBS, TEXAS GARDENERS' GUIDE TO GROWING AND USING, is hot off the Texas Gardeners' Press in time for the 44th Annual Garden Festival '87 in Ft. Worth April 3, 4, and 5. Diane Morey Sitton, local resident of Colmesneil, will be a special guest as author of the book. She will be autographing copies during the three-day event. Sitton, native of Florida, moved to Houston, Texas following graduation from the University of South Florida in late 1969. There, she began her career in communications and public relations. She served in numerous capacities while affiliated with The Houston Post, served as public relations director for the Alabama-Coushatta Indian Reservation, and

has become well known in Tyler County with her popular column "Shop with Diane." Being a published author, a lifelong dream, has become a reality since Sitton's move, with husband James, to their farm in Colmesneil. Growing in Houston, Woodville, Ladonia, and other Texas locations come alive as the pages reveal special close-ups of herbs. The most up-to-date book on herb growing in Texas, HERBS, is also the latest book published by Texas Gardeners' Press. The soft cover edition is well organized and beautifully printed-an invaluable resource book for herb enthusiasts living in Texas. (Most herb books and herbal information originate in New England and/or England.) Sitton will be actively introducing her new book, HERBS, TEXAS GARDENERS' GUIDE TO GROWING AND USING, during the month of April in East Texas. (For additional information, write: B-1, Box 384, Colmesneil, Texas 75938.)

## Garden Club Members Honored

Former members of the Woodville Garden Club will appreciate the united efforts of your sixteen members who have attained such high awards for the year 1986-87. We feel some of the recognition received was the result of involvement

**VOTE**  
**SATURDAY, APRIL 4th**  
**Re-Elect**  
**GEORGE JARROTT**  
**Position No 1**  
**Woodville School Board**  
Pd. Pol. Ad By George Jarrott

**POSSUM HOLLER BALLROOM**  
AT JONES COUNTRY COLMESNEIL

**WELCOME DOGWOOD GUESTS!!**  
**EVERYONE COME ON OUT & ENJOY THE GOOD COUNTRY MUSIC OF THE JIMMY DANIELS BAND**  
Appearing Live!!  
Friday 7:30 - 11:30 Saturday 8 - 12

**BETTY & BOB'S WEEKEND SPECIAL**  
Friday & Saturday  
Catfish Dinner 6<sup>95</sup>  
Sunday Plate Lunch Special 5<sup>95</sup>

Hwy. 255 837-2256

**ROCKLAND GROCERY**  
On Highway 69 North Colmesneil

•Groceries•Gas•Feed  
•Hardware•Diesel•Kerosene  
Now Serving  
**Short Orders**  
•Steak Finger Baskets•Fishbaskets•Hamburgers  
•And More

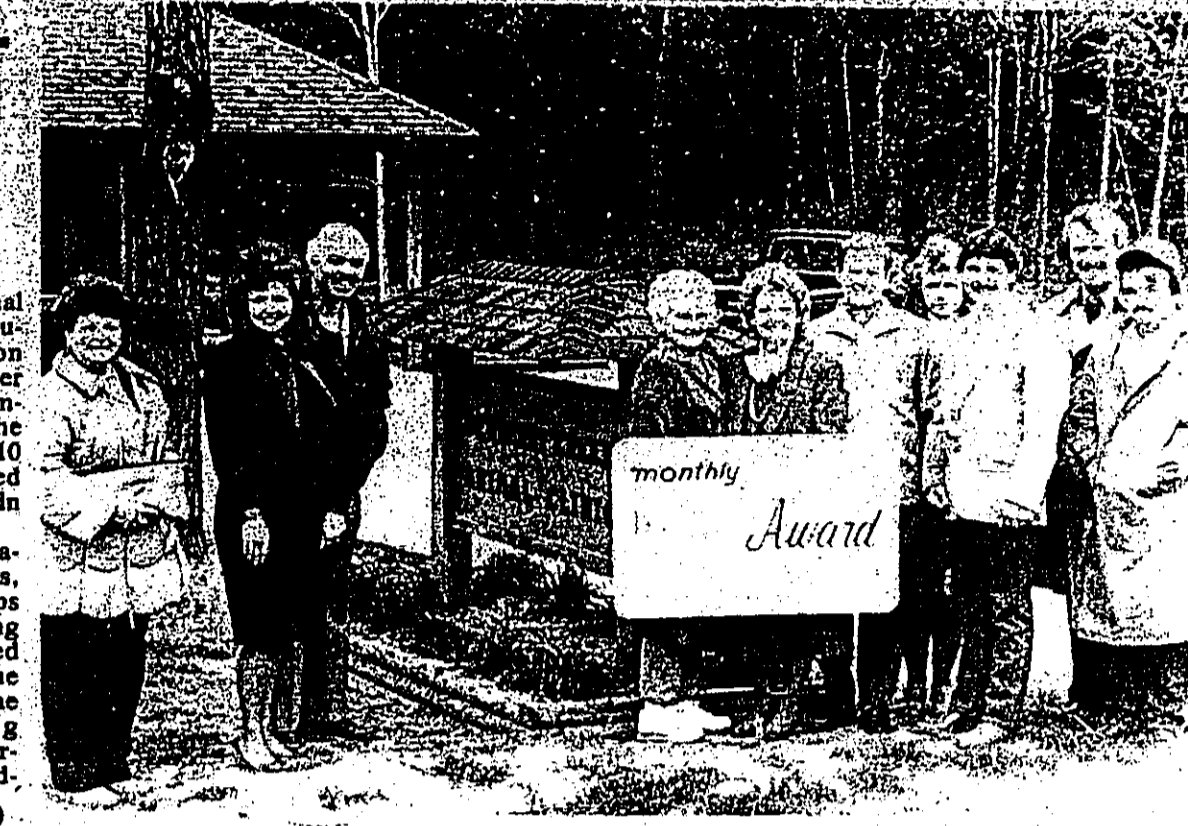
Stop By For A Cup Of Coffee And Get Acquainted  
Owned And Operated By  
Diane Sitton (Aunt Diane)

# tyler county

## Chamber Gives Award

Dewberry Creek Animal Clinic received the Beautification Award on March 30 from the Tyler County Chamber of Commerce. Ceremony for the event took place at 10 a.m. at the clinic located on Highway 69 south in Woodville.

After a careful evaluation of available sites, Dr. & Mrs. Larry Phillips chose the gently sloping pastoral setting located on the west side of the highway just south of the Woodville Shopping Center. They began services-grooming, board-



(To Page 4)

## Country Kitchen

By Ann Morrison

It's Dogwood Time in Tyler County and that means extra company for many of us. Again using your favorite low-calorie chicken, you may stretch your food dollars while serving company appealing meals. The following recipes are from Betty Crocker's Great Ways With Chicken & Turkey.

**BAKED CHICKEN AND VEGETABLES**  
A whiff of tarragon mingled with fresh vegetable flavors lend elegance to this low-calorie dish.  
6 small chicken breast halves (about 2 pounds)  
1/2 teaspoon paprika  
6 small zucchini, cut lengthwise into halves, then into 2-inch pieces  
4 medium carrots, cut into 1/4-inch slices  
4 ounces small mushrooms  
1/2 cup margarine or butter, melted  
1 tablespoon lemon juice  
1 teaspoon dried tarragon leaves  
1/8 teaspoon pepper  
Remove skin from chicken breasts. Place chicken, meaty sides up, in ungreased rectangular baking dish, 13x9x2 inches; sprinkle with paprika. Place zucchini, carrots and mushrooms around and over chicken. Mix remaining ingredients; drizzle over chicken and vegetables. Cover and bake in 350 degree oven until chicken is done, 50 to 60 minutes.

6 servings.  
Excellent with rice!

### IMPOSSIBLE CHICKEN PIE

While baking, this easy main-dish pie does the impossible by making its own crust. Delicious for brunch.  
2 cups cut-up cooked chicken or turkey  
3 jar (4 1/2 ounces) sliced mushrooms, drained  
4 green onions (with tops), sliced  
1/2 teaspoon salt  
1 cup shredded natural Swiss cheese (4 ounces)  
3 eggs  
1 1/2 cups milk  
1/4 cup buttermilk baking mix  
Lightly grease pie plate, 10x1 1/2 inches. Sprinkle chicken, mushrooms, onions, salt and cheese in pie plate. Beat remaining ingredients until smooth. 15 seconds in blender on high or 1 minute with hand beater. Pour into pie plate. Bake uncovered in 400 degree oven until golden brown and knife inserted in center come out clean, 30 to 35 minutes. Let stand 5 minutes before cutting.

6 to 8 servings.  
Try serving this delicious chicken pie with a green salad or green vegetable. For a special but easy treat for your guests try:

### PINEAPPLE PECAN PIE

1 cup pecans  
1 cup Sweetened Condensed milk  
Juice of 1 lemon  
1 13 1/2 oz. can crushed pineapple  
1 large container Cool Whip  
2 graham cracker crusts  
Mix ingredients and fold in Cool Whip. Makes 2 pies!  
Have a good week and join us next week for some unusual vegetable dishes for your family's meals.

**BEST'S SPRING SALE IS BEST'S EVER!**

**LADIES' NYLON GOWNS & ROBES 25% OFF**  
MISS ELAINE PINEHURST

**SPRING SPORTSWEAR JR & MISSY SIZES SELECTED GROUPS 25% OFF**  
THAT'S ME LUCIA SHIP'N SHORE

**BOYS' DRESS SLACKS 25% OFF**

**Levi's® Blue Jeans**  
Levi's® SADDLEMAN BOOT CUT 14<sup>99</sup>  
PRE-SHRUNK 501-0115 16<sup>99</sup>  
501 SHRINK-TO-FIT 16<sup>99</sup>  
STRAIGHT LEGS 14<sup>99</sup>  
PRE-SHRUNK 501 IN COLORS WHITE, BLACK, & GRAY 22<sup>99</sup>

**GIRLS' SIZES 4-14 SELECTED STYLES DRESSES & SPORTSWEAR 25%-50% OFF**

**ASSORTED STYLES & SIZES JUMPING JACKS POLL PARROT CHILDREN'S DRESS SHOES 1/2 OFF**  
IDEAL EASTER SHOES!

**MEN'S SHORT SLEEVE SPORT SHIRTS GREAT SELECTION FROM OUR REGULAR STOCK 1/2 PRICE**

**LADIES' SANDALS Soft Spots REG 40" & 41" 19<sup>99</sup> - 28<sup>99</sup>**

**20% OFF Phylax SUPPORT CAN BE BEAUTIFUL HAPPY MEDIUM & MADE FOR ME BRAS**

**MEN'S SHORT SLEEVE DRESS SHIRTS & SPORT SHIRTS 5<sup>99</sup> 2 GROUPS**

**Levi's®**  
**J.B. BEST & CO.**  
ADDITIONAL STORES LOCATED IN THE SQUARE WOODVILLE

**VOTE RE-ELECT BETH ALLISON**  
**TRUSTEE, WOODVILLE I.S.D. Position No. 2**  
**SATURDAY APRIL 4th**  
Pd. Pol. Ad By Beth Allison, P.O. Box 18, Woodville, TX





## Garden Club

(From Page 2)

Club to a Gold Club rating. Ten Awards were also given. They were: Gold Horticulture Rating, President's Report, District 2nd place, Southern Zone, First Place, Arbor Day-Second place. Awards for contribution to Headquarters' Improvement Fund, Velma Aiken Scholarship Fund, and National Land Trust.

Award for the construction and placement of 5 bird sanctuary signs and placing them on highways into our city. Special recognition for participation in the Adopt-A-Highway Project.

Mrs. Beulah Shouville, long time member, was awarded a lifetime membership in the National Garden Club.

Our present officers are: Marie Howell, President; Jessie Perry, 1st Vice President; Paula Werse, 2nd Vice President; Secretary: Lola Turner; Treasurer: Vera Nichols; Chaplain: Ethel Read.

Members are diligently working on our Annual Flower Show to be held on April 15th at the Woodville Methodist Church.

# EDITORIAL PAGE

## THE TYLER COUNTY BOOSTER

SERVING TYLER COUNTY SINCE 1930

(USPS 645-5560)  
Published every Thursday by Tyler County Publishing Company, P.O. Box 248, Woodville, Texas 75799. Phone: 283-2569.

Entered as second class matter of the Post Office in Woodville, Texas, December 11, 1930, under the act of Congress March 2, 1879. Second class postage paid at Woodville, Texas.

Any erroneous reflection upon the character, standing or reputation of any person, firm or corporation which may appear in this newspaper will be gladly corrected upon being brought to the attention of the publisher.

Postmaster: Please send form 3579 to P.O. Box 248, Woodville, Texas 75799.

Tyler County 7.50  
Polk, Angelina Jasper & Hardin Counties 8.50  
Other Texas Cities 9.50  
Overseas 12.50

**MEMBER 1987**  
**TEXAS PRESS ASSOCIATION**



Got up late the other night to get a glass of water and noticed there was a light on under Susie's door. She's not much for heavy reading. Gets most of what she knows from C-SPAN and CBN.

Eased open the utility room door to see what she was up to, but she'd heard us coming. There she is frantically trying to stuff the Sports Illustrated bathing suit under her doggie blanket.

Couldn't help but smirk a little bit, and we were a little relieved too. We'd been sure Nan had stuffed it in the garbage the minute it hit the post office.

Susie of course by this time knows she's been caught red-pawed. The bandiest magazine that ever hits the T-Wheeler's coffee table, and there she sits, trying to cover the evidence with her bottom.

Trying to divert our attention from the obvious, she trots over to her food dish, nuzzles a few morsels, then looks up and asks us what we thought of Oral Roberts.

We didn't particularly like the way the conversation was going, but thought we'd humor her a bit and said we really hadn't thought much about Oral Roberts lately. That they were a pretty good basketball power several years ago, but as far as we knew, nothing much had been heard from the Midwest Metropolitan Conference lately.

Susie knew she had the needle in pretty deep, and reminded us that her question about Oral Roberts had nothing to do with basketball at Oral Roberts University.

We reminded her real quick that we were aware of where she was coming from, but that was the only answer she was going to get to that question.

There were any other questions on her mind before we turned out the light and slammed the door?

She said she could tell we didn't like to talk about what was really on her mind. That we had been so upset with the Mickey Mouse antics in Washington.

We said that was true. But what all the Contra mess showed was that some folks, without some real direction in what they do can sometimes operate like a loose cannon on the deck.

She wondered if that was what had happened with Jim and Tammy Baker. We just offered a suggestion that she could mull over. That people were fallible.

What's fallible, Susie wants to know. Well, it's like everybody is liable to make a mistake now and then.

Like when Susie strays off the curb and starts walking down the middle of the street. She knows she isn't supposed to do it. But a squirrel or something diverts her attention.

Susie wants to know if Jessica Hahn was a squirrel.

We said in your eyes, it's about the same thing. We humans would look at it a little differently.

We said most of us like to put people on pedestals. Somebody we can look up to. And we start asking too much of them. We don't ever want them to make a mistake. Never want them to be tempted. And when they do trip up, we take off after them like a pack of mad dogs. Susie ought to relate to that.

Susie said she was just so depressed over everything. Worried about us everything about Reagan. We interrupted that to say Nancy could handle it.

She said when the mess blew up over the Jim and Tammy Show, she couldn't handle the crisis. Said it always embarrassed her to see Tammy's mascara run. We told Susie to watch her mouth and her manners.

We said we could appreciate her concern to a point, but that we were a

**JOHN F. MORRISON**  
PUBLISHER/EDITOR

**BOOKKEEPING DEPARTMENT**  
Kathleen Selts

**ADVERTISING DEPARTMENT**  
Sylvia Cowart, Director

**EDITORIAL DEPARTMENT**  
Luther Lowery, Sports

**SCHOLASTIC EDITOR**  
Annabeth Willis, Reporter

**PRODUCTION DEPARTMENT**  
Kandy Hensarling, Typesetter

**CIRCULATION DEPARTMENT**  
Billie Martin, Director

**COUNTY COMMUNITY COLUMNISTS**

Doucette Hillister  
Sunny Dell  
Vianhoe Warren  
Wildwood Rockland

Mrs. W. T. Haynes  
A. T. Starrock  
Annabeth Willis

**MEMBER 1987**  
**TEXAS PRESS ASSOCIATION**

**MEMBER 1987**  
**TEXAS PRESS ASSOCIATION**

**MEMBER 1987**  
**TEXAS PRESS ASSOCIATION**

**MEMBER 1987**  
**TEXAS PRESS ASSOCIATION**

**MEMBER 1987**  
**TEXAS PRESS ASSOCIATION**

**MEMBER 1987**  
**TEXAS PRESS ASSOCIATION**

**MEMBER 1987**  
**TEXAS PRESS ASSOCIATION**

**MEMBER 1987**  
**TEXAS PRESS ASSOCIATION**

**MEMBER 1987**  
**TEXAS PRESS ASSOCIATION**

**MEMBER 1987**  
**TEXAS PRESS ASSOCIATION**

**MEMBER 1987**  
**TEXAS PRESS ASSOCIATION**

**MEMBER 1987**  
**TEXAS PRESS ASSOCIATION**

**MEMBER 1987**  
**TEXAS PRESS ASSOCIATION**

**MEMBER 1987**  
**TEXAS PRESS ASSOCIATION**

**MEMBER 1987**  
**TEXAS PRESS ASSOCIATION**

**MEMBER 1987**  
**TEXAS PRESS ASSOCIATION**

**MEMBER 1987**  
**TEXAS PRESS ASSOCIATION**

**MEMBER 1987**  
**TEXAS PRESS ASSOCIATION**

**MEMBER 1987**  
**TEXAS PRESS ASSOCIATION**

**MEMBER 1987**  
**TEXAS PRESS ASSOCIATION**

**MEMBER 1987**  
**TEXAS PRESS ASSOCIATION**

**MEMBER 1987**  
**TEXAS PRESS ASSOCIATION**

**MEMBER 1987**  
**TEXAS PRESS ASSOCIATION**

**MEMBER 1987**  
**TEXAS PRESS ASSOCIATION**

**MEMBER 1987**  
**TEXAS PRESS ASSOCIATION**

**MEMBER 1987**  
**TEXAS PRESS ASSOCIATION**

**MEMBER 1987**  
**TEXAS PRESS ASSOCIATION**

**MEMBER 1987**  
**TEXAS PRESS ASSOCIATION**

**MEMBER 1987**  
**TEXAS PRESS ASSOCIATION**

**MEMBER 1987**  
**TEXAS PRESS ASSOCIATION**

**MEMBER 1987**  
**TEXAS PRESS ASSOCIATION**

**MEMBER 1987**  
**TEXAS PRESS ASSOCIATION**

**MEMBER 1987**  
**TEXAS PRESS ASSOCIATION**

**MEMBER 1987**  
**TEXAS PRESS ASSOCIATION**

**MEMBER 1987**  
**TEXAS PRESS ASSOCIATION**

**MEMBER 1987**  
**TEXAS PRESS ASSOCIATION**

**MEMBER 1987**  
**TEXAS PRESS ASSOCIATION**

**MEMBER 1987**  
**TEXAS PRESS ASSOCIATION**

**MEMBER 1987**  
**TEXAS PRESS ASSOCIATION**

**MEMBER 1987**  
**TEXAS PRESS ASSOCIATION**

**MEMBER 1987**  
**TEXAS PRESS ASSOCIATION**

## LETTERS TO THE EDITOR

To The Editor:  
I would like to take this opportunity to express my appreciation to all the volunteers who made the Western Weekend a great success, and one of the largest that we've had in a number of years. This includes spectators and participants of the parade.

In regard to the incident concerning the death of the Western Weekend Parade, I do not know who authorized the riders to proceed in the parade. I have had the honor of carrying the flag in the parade at the head of the parade, both in Western Weekend and/or Dogwood Festival Parades for 35 plus years. In all those years there has never been a need for a color guard. It has always been my understanding that nothing sets to precede the American Flag in an occasion such as this.

Whoever authorized the riders to precede the American Flag did this in good faith but did so without doing his homework as to the courtesies that are extended to this symbol of our great nation. Perhaps we should all familiarize ourselves with the respect that should be shown to our flag.

Let me again thank the officials for the honor of carrying the flag for all these years. Paul E. Walker

**NOVIA'S GREENHOUSE**  
283-2920  
Hwy 190 W.  
(Turn left at Ballpark, watch for sign)

**HANGING BASKETS**  
**CRAFTS**

**Novia's Greenhouse**  
283-2920  
Hwy 190 W.  
(Turn left at Ballpark, watch for sign)

**Novia's Greenhouse**  
283-2920  
Hwy 190 W.  
(Turn left at Ballpark, watch for sign)

**Novia's Greenhouse**  
283-2920  
Hwy 190 W.  
(Turn left at Ballpark, watch for sign)

**Novia's Greenhouse**  
283-2920  
Hwy 190 W.  
(Turn left at Ballpark, watch for sign)

**Novia's Greenhouse**  
283-2920  
Hwy 190 W.  
(Turn left at Ballpark, watch for sign)

**Novia's Greenhouse**  
283-2920  
Hwy 190 W.  
(Turn left at Ballpark, watch for sign)

**Novia's Greenhouse**  
283-2920  
Hwy 190 W.  
(Turn left at Ballpark, watch for sign)

**Novia's Greenhouse**  
283-2920  
Hwy 190 W.  
(Turn left at Ballpark, watch for sign)

**Novia's Greenhouse**  
283-2920  
Hwy 190 W.  
(Turn left at Ballpark, watch for sign)

**Novia's Greenhouse**  
283-2920  
Hwy 190 W.  
(Turn left at Ballpark, watch for sign)

**Novia's Greenhouse**  
283-2920  
Hwy 190 W.  
(Turn left at Ballpark, watch for sign)

**Novia's Greenhouse**  
283-2920  
Hwy 190 W.  
(Turn left at Ballpark, watch for sign)

**Novia's Greenhouse**  
283-2920  
Hwy 190 W.  
(Turn left at Ballpark, watch for sign)

**Novia's Greenhouse**  
283-2920  
Hwy 190 W.  
(Turn left at Ballpark, watch for sign)

**Novia's Greenhouse**  
283-2920  
Hwy 190 W.  
(Turn left at Ballpark, watch for sign)

**Novia's Greenhouse**  
283-2920  
Hwy 190 W.  
(Turn left at Ballpark, watch for sign)

**Novia's Greenhouse**  
283-2920  
Hwy 190 W.  
(Turn left at Ballpark, watch for sign)

**Novia's Greenhouse**  
283-2920  
Hwy 190 W.  
(Turn left at Ballpark, watch for sign)

**Novia's Greenhouse**  
283-2920  
Hwy 190 W.  
(Turn left at Ballpark, watch for sign)

**Novia's Greenhouse**  
283-2920  
Hwy 190 W.  
(Turn left at Ballpark, watch for sign)

**Novia's Greenhouse**  
283-2920  
Hwy 190 W.  
(Turn left at Ballpark, watch for sign)

**Novia's Greenhouse**  
283-2920  
Hwy 190 W.  
(Turn left at Ballpark, watch for sign)

**Novia's Greenhouse**  
283-2920  
Hwy 190 W.  
(Turn left at Ballpark, watch for sign)

**Novia's Greenhouse**  
283-2920  
Hwy 190 W.  
(Turn left at Ballpark, watch for sign)

**Novia's Greenhouse**  
283-2920  
Hwy 190 W.  
(Turn left at Ballpark, watch for sign)

**Novia's Greenhouse**  
283-2920  
Hwy 190 W.  
(Turn left at Ballpark, watch for sign)

**Novia's Greenhouse**  
283-2920  
Hwy 190 W.  
(Turn left at Ballpark, watch for sign)

**Novia's Greenhouse**  
283-2920  
Hwy 190 W.  
(Turn left at Ballpark, watch for sign)

**Novia's Greenhouse**  
283-2920  
Hwy 190 W.  
(Turn left at Ballpark, watch for sign)

**Novia's Greenhouse**  
283-2920  
Hwy 190 W.  
(Turn left at Ballpark, watch for sign)

**Novia's Greenhouse**  
283-2920  
Hwy 190 W.  
(Turn left at Ballpark, watch for sign)

**Novia's Greenhouse**  
283-2920  
Hwy 190 W.  
(Turn left at Ballpark, watch for sign)

**Novia's Greenhouse**  
283-2920  
Hwy 190 W.  
(Turn left at Ballpark, watch for sign)

**Novia's Greenhouse**  
283-2920  
Hwy 190 W.  
(Turn left at Ballpark, watch for sign)

**Novia's Greenhouse**  
283-2920  
Hwy 190 W.  
(Turn left at Ballpark, watch for sign)

**Novia's Greenhouse**  
283-2920  
Hwy 190 W.  
(Turn left at Ballpark, watch for sign)

**Novia's Greenhouse**  
283-2920  
Hwy 190 W.  
(Turn left at Ballpark, watch for sign)

**Novia's Greenhouse**  
283-2920  
Hwy 190 W.  
(Turn left at Ballpark, watch for sign)

**Novia's Greenhouse**  
283-2920  
Hwy 190 W.  
(Turn left at Ballpark, watch for sign)

**Novia's Greenhouse**  
283-2920  
Hwy 190 W.  
(Turn left at Ballpark, watch for sign)

**Novia's Greenhouse**  
283-2920  
Hwy 190 W.  
(Turn left at Ballpark, watch for sign)

**Novia's Greenhouse**  
283-2920  
Hwy 190 W.  
(Turn left at Ballpark, watch for sign)

**Novia's Greenhouse**  
283-2920  
Hwy 190 W.  
(Turn left at Ballpark, watch for sign)

**Novia's Greenhouse**  
283-2920  
Hwy 190 W.  
(Turn left at Ballpark, watch for sign)

**Novia's Greenhouse**  
283-2920  
Hwy 190 W.  
(Turn left at Ballpark, watch for sign)

**Novia's Greenhouse**  
283-2920  
Hwy 190 W.  
(Turn left at Ballpark, watch for sign)

**Novia's Greenhouse**  
283-2920  
Hwy 190 W.  
(Turn left at Ballpark, watch for sign)

**Novia's Greenhouse**  
283-2920  
Hwy 190 W.  
(Turn left at Ballpark, watch for sign)

## THE CLASSIFIEDS

### A SHOPPER'S PARADISE

Deadline: Monday 5 pm 283-2569

## KNAPP SALES

Intersection of Hwy 69 & 287  
283-2526

### "WHERE SERVICE MAKES THE DIFFERENCE"

1986 LINCOLN TOWN CAR	PRICES STARTING AT \$17,995.00
1986 MERCURY COLONY PARK WAGON	\$11,995.00
1986 FORD T-BIRD	\$10,450.00
1986 FORD MUSTANG H-BACK	\$9,995.00
1986 FORD MUSTANG 3DR	\$8,995.00
1986 MERCURY COUGAR	\$8,995.00
1986 FORD CROWN VICTORIA 4DR	\$8,995.00
1986 FORD CROWN VICTORIA 4DR	\$8,995.00
1986 MUSTANG GT	\$8,995.00
1986 MERCURY TOPAZ	\$7,995.00
1986 FORD TEMPO 4DR	\$7,995.00
1986 FORD TEMPO GLDR	\$7,995.00
1986 1/2 FORD ESCORT WAGON	\$6,995.00
1986 MERCURY MARQUIS BROUGHAM 4DR	\$6,295.00
1986 1/2 MERCURY MARQUIS BROUGHAM 4DR	\$6,295.00
1986 FORD LTD 4DR	\$6,295.00
1986 1/2 ESCORT 2DR	WAS...\$4,495.00...\$4,995.00
1986 LYNX 4DR	WAS...\$4,495.00...\$4,995.00
1986 MERCURY ZEPHYR	WAS...\$4,495.00...\$4,995.00
1986 CHEV. IMPALLO	WAS\$2,495.00...\$1,995.00
1978 CHEV. CAPRICE	WAS\$2,495.00...\$1,995.00

### TRUCKS

1986 CHEV. 1/2 TON SHORT BED SILVERADO	WAS\$10,995.00...\$9,995.00
1986 FORD 1/2 TON WELDING BED	\$10,450.00
1986 CHEV. 1 TON PICKUP DUAL REAR WHEELS	\$10,450.00
1986 FORD F-250 LTD	\$9,995.00
1986 FORD F-150 SUPERCAB LTD	\$9,995.00
1986 DODGE RAM CHARGER 2WD	\$8,995.00
1986 DODGE RAM 2WD	\$7,995.00
1986 NISSAN 1/2 TON	\$8,995.00
1986 F-150	\$4,995.00
1973 DODGE PICKUP	WAS\$1,595.00...\$1,395.00
1974 FORD COUVER... (AS IS)	\$1,395.00

FINANCING AVAILABLE  
THRU FORD MOTOR CREDIT  
UP TO 48 MONTHS WITH  
APPROVED CREDIT

ALL USED VEHICLES  
OFFERED FOR SALE HAVE  
A KNAPP FORD USED  
VEHICLE WARRANTY

FOR SALE-From Dress-  
es & bridal dress w/  
hoop. 283-2645. 141tp

## GET YOUR CAR READY FOR SPRING AND SAVE ON THE BIG A ROAD TO SAVINGS!

<b>BIG A AIR FILTERS</b> \$1.00	<b>BIG A WIRE SETS</b> \$2.00	<b>BIG A DISC BRAKE PADS</b> \$1.50 \$3.00
<b>BIG A GATES V BELTS</b> \$2.00	<b>BIG A CHAMPION SPARK PLUGS</b> \$1.00	<b>BIG A PREMIUM GAS SHOCKS &amp; STRUTS</b> \$5.00
<b>BIG A MOTOR OIL</b> \$2.40	<b>BIG A OIL FILTER</b> \$1.00	<b>BIG A ADVANTAGE MUFFLER</b> \$5.00

WOODVILLE  
Big A Auto Parts  
Hwy 69 South  
Call today for more information  
COLUMBIA  
Big A Auto Parts  
Hwy 69 South

**BIG A AUTO PARTS**

## THE TYLER COUNTY BOOSTER

SERVING TYLER COUNTY SINCE 1930

### CLASSIFIED ADS GET RESULTS

For Sale Help Wanted

FOR SALE-1 1/2 story home, Vanhook Estates, heavy wooded lot, \$500 down, easy financing call Ricky collect at 713-593-1179. 142tc

NICHOLS Farm, Ranch & Auto Supply Complete line of Auto Parts Hwy 69 S. 283-5136

## WARREN ALUMINUM CO.

20 Years Experience  
Home Owned and Operated  
Expert Installation  
CARPORTS

ASK US ABOUT  
Patio Covers  
SCREEN-ROOMS  
GLASS-ROOMS  
STORE-FRONT AWNINGS  
FREE ESTIMATES  
Call Today And Save  
547-3164

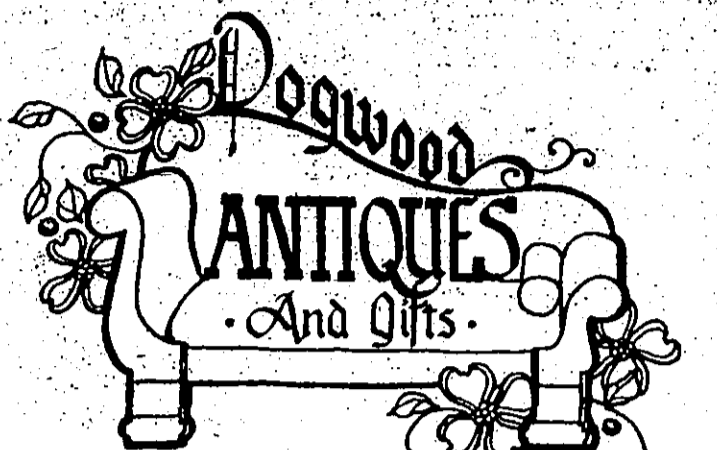
## FREE ROSES!!

RECEIVE A  
GIFT CERTIFICATE FOR A  
DOZEN ROSES WITH EVERY  
NEW OR USED  
TRUCK PUR



## Salad Tasting Tea Set

The volunteers of the Sheltered Workshop will have a Salad Tasting Tea Friday, April 3rd at the Sheltered Workshop 203 Willow. The price will be \$3.00 per person. There will be a \$3.50 charge to deliver your salad lunch. If you wish to donate a salad or have a salad lunch delivered call Sandra at 283-8171. If you can not bring your salad we will be glad to pick it up. The clients will have crafts they made for sale. Hope you will come by and have lunch and some good fellowship.

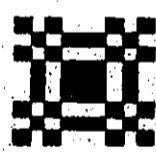


114 S. Charlton, Woodville, Tx.  
Tel. 409-283-7842 - On the Square

**WELCOME VISITORS !**  
One Stop Shopping For That  
Country Look.

- English and American Antiques
- Fenton Art Glass
- Handthrown Pottery & Baskets
- Lace Collars
- Quilted Dogwood Items
- Flat Braided Rugs & Placemats
- ... and much more.

For a short time view a special showing  
of handwoven area rugs by  
SUZANNE RODDY, handweaver,  
of Conroe, Texas.



• Special orders available.

HOURS Tues. - Friday 9-5 Saturday 9-4

Now accepting Mastercard & Visa!  
Bridal Registry & Layaways Welcome

### Autos For Sale

**FOR SALE-1977 Chevy Elcamino** Pickup fully loaded. New 6 cyl motor, new paint, new tires. A/C. Will finance for local resident with \$800 down. 429-5275.

**FOR SALE-1975 Dodge Dart** Fully loaded. A/C. 6 cyl. auto. Will finance for local resident with \$400 down. 429-5275.

**FOR SALE-1975 Chevy Montecarlo** Loaded. Will finance for local resident with \$400 down. 429-5275.

**FOR SALE-1975 Toyota Pickup** 5 speed. Will finance for local resident with \$400 down. 429-5275.

**FOR SALE-1977 Toyota Corolla** 4 speed. Will finance for local resident with \$300 down. 429-5275.

**FOR SALE-1978 Chevy Impala** 4 dr. Loaded. Will finance for local resident with \$400 down. 429-5275.

**FOR SALE-1980 Chevy Monza** Fully loaded. Auto, A/C. Will finance for local resident with \$600 down. 429-5275.

### Notices

**NOTICE TO ALL PERSONS HAVING CLAIMS AGAINST THE ESTATE OF FREDDIE SMITH DECEASED**

Notice is hereby given that original Letters Testamentary for the Estate of **FREDDIE SMITH**, issued on March 30, 1987, in Cause No. 6040, pending in the County Court for Tyler County, Texas, to: **ARCHIE SMITH** and **RAY LYNN SMITH**, the residence of such Co-Executors is Woodville, Tyler County, Texas, the post office address is: c/o James M. Allison, 300 West Bluff Street, Woodville, Texas 75979.

All persons having claims against this Estate which is currently being administered are required to present them within the time and in the manner prescribed by law.

Dated this the 30th day of March, 1987.

James M. Allison  
Attorney for Estate

... enjoy better service by

**SHOPPING AT HOME**

### Card Of Thanks

The family of Claude Broom wish to express our heartfelt thanks to our relatives, neighbors, and friends who were there when we needed them the most. The loving kindness shown by all through your many acts of sympathy shall never be forgotten.

A very special thanks to Bro. Ernest Martin and to Sister Lela Brown for a beautiful service at our church and also to the Masonic Lodge for their service at graveside.

A very special thanks to Dr. Garner and Jim Gainey and the E. R. staff of Tyler Co. Hospital for their promptness

and efficiency during the loss of our loved one.

Also a very special thanks to the staff of the Riley Funeral Home for a job well done. The "real home atmosphere" of the funeral home made it so much easier for all of us when our hearts were so heavy. They not only comforted us but treated us like a part of their own family.

We do appreciate every token by love shown to us and they will be a source of comfort in the lonely days ahead.

Sincerely,  
From all the  
Claude Broom Family

**ELECT**  
**BILLY ROSE**  
**WOODVILLE**  
**CITY COUNCIL**

**SATURDAY,**  
**APRIL 4, 1987**

Political Advertising Paid  
for by Billy Rose, Woodville, TX

**FOR CITY COUNCIL**

**BOB GILBERT**

Incumbent

15 YEARS RESIDENT OF WOODVILLE

15 YEARS EXPERIENCE IN GOVERNMENT

11 YEARS ASSISTANT MANAGER OF SEARS

CATALOG STORE IN WOODVILLE

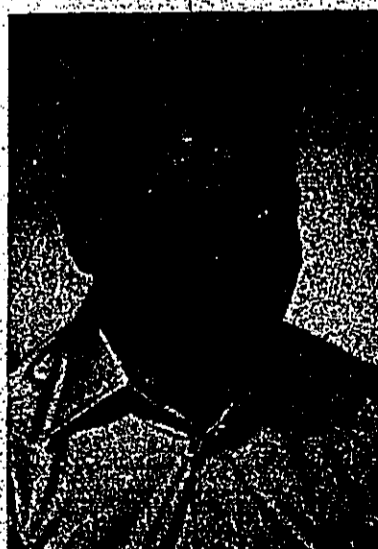
FAMILY TIES WITH EARLY SETTLERS OF TYLER COUNTY

COLLEGE MAJOR IN STATE & LOCAL GOVERNMENT

PAST PRESIDENT & 11 YEAR MEMBER OF WOODVILLE LIONS CLUB

**YOUR VOTE APPRECIATED**

Pd. Pol. Ad. By Bob Gilbert



Bob Gilbert

**There's  
no taste like  
home.**



1/2 lb. HOMESTYLE  
**Hungr-buster**  
1/2 lb. HOMESTYLE  
**Beltbuster**  
**\$1.69**

For 100% pure beef that looks, cooks and tastes homemade, you can't beat Dairy Queen's Homestyle burgers. And for a limited time, you can't beat the price either.

Monday, March 30  
 thru Sunday, April 12, 1987  
at participating stores.

**TYLER COUNTY  
HOSPITAL  
MEDICAL  
DIRECTORY**

### FAMILY PRACTICE

L. Gayle Burton, M.D. 283-2822  
James M. Brown, M.D. 283-7445  
B. Douglas Hallmark, M.D. 283-7303  
Paula Schultz, M.D. 283-2822  
Robert E. Swearingen, M.D. 283-3088  
Curtis Garner, M.D. 283-2142

### PEDIATRICS AND O.B.

B. Douglas Hallmark, M.D.  
283-7303  
Paula Schultz, M.D. 283-2822

### ORTHOPEDICS

James Schelner, M.D. 283-2521

### UROLOGY

J. Denton Harris, IV, M.D. 283-2521  
James Henderson, IV, M.D.  
283-2521

### PHYSICAL THERAPY

Bob Carrington 283-2521

### SPEECH THERAPY

Dede Cordes 283-2521

### RESPIRATORY THERAPY

Adele Isaacs 283-2521

### EMERGENCY ROOM

24 Hour emergency doctor on staff.  
283-2521

Patients Admitted The Week of March 23 and March 29

John Varley	Jerry Godkin	Dahila Fortin
Gatlin Davis	Mamie Watts	Emma French
Clayton Harvill	Pauline Conner	David Elliott
Loyce Pelton	Bertha Broom	Tambray Beck
Emmett Black	Lory Lear	Baby Boy Beck
Fred Ellender	Arthur Bean	Johnny Anderson
Gerrude Jordan	Laura McNeal	Marvin Jordan
Gladys Powell	Baby Girl McNeal	Leale Jackson
		Grady James