



SPEAKS OUT—Nida Moseley, (standing right) secretary of the Tyler County Taxpayers Association Thursday that "The Good Lord giveth, and Mary Mann taketh away." The group met to organize a watchdog group to challenge the local taxing entity to better standards and operating procedure. Moseley was referring to the Chief Appraiser of the Tyler County Tax Appraisal District. (See related story on Page 6A)

Taxpayer Association Forms Amid Protest

An organizational meeting of the watchdog Tyler County Taxpayers Association was held Thursday in the District Courthouse of the Tyler County Courthouse where about 250 persons assembled to elect an operating board of directors which includes some 17 Tyler Countians and which represents each of the municipal and school district taxing entities in the County.

Don Forre of Woodville, was elected to preside over the group, held an informal barbecue at his home on Hwy 69 south of Woodville following the meeting on Monday. To get acquainted and to take formal action on some specific committee assignments and duties from the newly elected operating board of directors.

"Purpose of the group is to educate the taxpayers and property owners on government practices affecting the assessment, collection and disbursement of taxes," said John Yearwood of Woodville, who opened

the meeting saying there "Would be no name calling...this is not a bull session," but continually spiked the group with the inflection of his voice saying, "My only purpose is to get it organized and to get it started," nevertheless found himself elected to a board despite a statement to the group early in the meeting that his advocacy for the organization would be better served from "my newspaper."

THE WOODSMAN

The meeting lasted some three hours before persons who were asked to become members "for only a dollar" went home after hearing round robin complaints from throughout the courtroom which specified various reported problems about local board practices and what was termed as "unfair assessments" of the local tax appraisal district. Many complaints centered on unequal timber company allowances as opposed to private landowner considerations.

Persons complained about difficulty in attending the board meetings which Chief Appraiser for the Tyler County Tax Appraisal District, Mary Mann, said Tuesday she would "be glad to have the board reconsider new dates. We'll put that on our September agenda," she added.

According to Ron Davis, who was elected as Vice President. She (Mary Mann) has no performance criteria set up by the board," adding, "she's not taken the board exam to become certified."

Christine Sanders asked "Is there any criteria for the board of Directors?" Yearwood responded saying, "They have a state charter under the Peveto Bill and this is what has created this \$350,000 bureaucracy down here," adding the State Property Tax Board sets the rules for the directors, and the guidelines for timber and ag use are completely out of line," Yearwood added, saying, "Mary Mann gets ideas floating through her office, reaches up, pulls them down and makes them policy. It becomes not taxation...but confiscation."

Nina Moseley, 66, of Woodville, told the group "The good Lord giveth and Mary Mann taketh away."

"I know everyone here is mad at being treated like a dog with no brain," said Vice President Davis. "The problem is they have no one to answer to."

The group was invited to step down to the Appraisal office "tomorrow" and file a protest. As of presstime Tuesday some 120 persons had filed protests. Of that figure 95 were agriculture and timber related and only 25 were basic property market value questions.

Mann told THE BOOSTER Tuesday that her certification would be complete by March 1989 following required courses in Assessment and Collections, some of which were required by other of the

Tri-County Group Conducts Election

Tri-County Community Action, Inc., headquartered at 827 Shelbyville Street in Center, Texas, is conducting an election to fill the position of Representative of the Poor in Tyler County. The election is to be on August 8, 1988 at the Aging Service Nutrition Center, 600 Elm Street, Woodville, Texas, from 10 a.m. to 2 p.m. The candidates whose names will be on the ballot are: Rev. Percy Lewis with the provision for write-in candidates. The public is urged to take the opportunity to vote.

THE TYLER COUNTY BOOSTER

SERVING TYLER COUNTY SINCE 1930

Thursday, July 28, 1988
Woodville, Texas 75797

JOIN TODAY

Deer Trail Country Club

283-7985

Vol. 59 No. 30
2 Sections 14 Pages

25¢



RESOURCE CONSERVATION GROUP MEETS HERE—The Southeast Texas Resource Conservation and Development Group met at the Woodville Inn July 20 in heat field activity reports from E.E. Lerskov, coordinator of the SET RCAD. The group discussed various projects underway in the district and discussed some \$313,000 in projects. Shown above is Project Coordinator Lerskov and operating director.

Commodity Distribution

The distribution of commodities who are certified for 1988 will be held in the County Courthouse, Tyler, Texas, on Thursday, August 11, 1988 at 10 a.m. The commodities to be distributed will be: corn, soybeans, wheat, and rice. The commodities will be distributed to the following counties: Cherokee, DeKalb, and Wilkes. The commodities will be distributed to the following individuals: (List of names and addresses follows in the original document).

DETDA OK's Resolution At Newton

NEWTON -- Members of the nine-county Deep East Texas Development Association unanimously approved two resolutions at the monthly meeting here in the new civic center.

DETDA members joined in support of the special stamp observing the Anniversary of history El Camino Real, gateway to Texas prior to 1800. A resolution was approved to be sent to the Citizen's Stamp Advisory Committee in Washington in support of this action.

East Texas area leaders also endorsed a resolution requesting an additional 14,000 acres of wilderness proposed in an extension of the Big Thicket National Preserve.

Congressman Charles Wilson is sponsoring a House Bill, 3544 which creates the proposed county commission. Wilson's Bill would create the county commission of 11 members, including the county judge and four representatives from each of the four precincts. The bill would also create a county council of 11 members, including the county judge and four representatives from each of the four precincts. The bill would also create a county council of 11 members, including the county judge and four representatives from each of the four precincts.



'Forest A Treasure'

John Mann, president of the Texas Forestry Association, was the featured speaker of the County Judges and County Commissioners association meeting held at the Woodville Inn on Thursday, June 24. The meeting was held in the dining room of the hotel. Mann spoke on "The Forest as a Treasure." He discussed the importance of forestry in Texas and the role of the Texas Forestry Association. He also discussed the importance of the forest as a source of timber, wildlife, and recreation. Mann also discussed the importance of the forest as a source of timber, wildlife, and recreation.

Subscribe Today!
Subscriptions Go Up August 1, 1988

PERSONAL & FAMILY accent on tyler county



Chester Lions Record High Yearly Attendance

Mann Receives BBA In Finance

Lee Perry Mann received his Bachelor of Business Administration degree on May 7, 1988 from Abilene Christian University in Abilene, Texas. His major was in finance.

Chester Lions Club members averaged 76.95% attendance for the 1987-1988 Lions year ending on June 30, with ten members receiving perfect attendance awards. President Robert Vinson presented awards to Lions Arthur Barnes, James Hughes, Harold Sturrock, J.W. Wilson, Bower Pool, Harold Lewis, Neal Hartman, Clarence Seamans, Frank Pickett and J.E. Seamans. Lions Harold Sturrock and James (Rusty) Hughes are present at 100% of the meetings. Lions attendance rules allow members to make up attendance by attending other clubs and providing for illness, job related and other that make it impossible for a member to attend.

Lions Lawrence-Watts and Dale Clamon received Fifteen Year Cheyron Awards from Lions International. The awards are presented on five-year intervals of Lion membership in the International Lions Clubs. Our visiting speaker for the month was Melinda A. Stryker of Woodville, a Protective Specialist, a Department of Human Resources. She gave a very interesting and informative discussion on her work in the field of Child Abuse and the related services that the Department provides to correct some of the problems.

The Lions enjoyed their usual delicious home cooked meals during the month that were prepared and served by the wives of Lions. The ladies were: Sarah Pool, Dorothy Wilson, Beulah Pickett, Jean Glasscock and Marjorie Barnes.



OFFICIAL OPENING—"Cooter Bob's" got the official treatments from members of the Tyler County Chamber of Commerce last week as they held their official Grand Opening. Offering a gameroom, and Photography Studio, Ball Park Hot Dogs and pool tournaments on Friday nights. It's located on Hwy. 65 south next to Turner's Radiator.

Immunizations

The Texas Department of Health, Public Health Region 7 office announced plans for the continuation of a series of monthly immunization clinics for all children needing immunizations. This clinic is available to all children, preschool and school age, beginning at two (2) months of age. Immunizations to be offered include Measles, Mumps, Rubella, Oral Polio, Diphtheria/Tetanus/Pertussis (DTP) AND Tetanus/diphtheria.

Tammy Fort Attends Leadership Confab

Homemakers of America's annual leadership meeting, July 11-14 in Cincinnati, Ohio. The youth-developed program describes a renewed commitment to three aspects of Future Homemakers of America's goal—public awareness, increased membership and a strong, positive image. Since the meeting is also a training conference, members learn to channel their leadership skills into projects resulting in personal achievement and the accomplishment of chapter goals that affect the family, school and community. Conference participants shared successful projects related to youth concerns. And, they planned activities based on national programs reviewed at the meeting.

Segrest Reunion Set

The ninth annual reunion of the Virgil Luther Segrest and Andy Lea (Crosby) Segrest family will be held at Martin Dies Jr. State Park, Walnut Ridge unit in the Recreation Hall on the fifth Sunday, July 31st at Dam B, Texas.

Birthday No. 96

Rev. Claude Read will be 96 July 29. New Hope Baptist Church will host a celebration from 2 to 4 p.m. on Sunday the 31st. Church is located 7 miles East of Warren on FM 1943.

A LITTLE LIGHT PLEASE

Recently, I had the pleasure of receiving a beautifully wrapped gift. The paper had been neatly folded and pressed. It was fastened at each side with a piece of transparent tape. There were two lines of ribbon that formed a cross-shaped pattern. At the angle of intersection, a bow had been placed precisely at the point of balance. It seemed a shame to disturb such a work of art.

Future Homemakers of America

Future Homemakers of America is a national vocational student organization of 300,000 home economics students through grade 12. It is the only in-school student organization with the family as its central focus. Program emphasis prepares youth to assume their adult roles in a complex society. It is unique.

Future Homemakers of America

Future Homemakers of America is a national vocational student organization of 300,000 home economics students through grade 12. It is the only in-school student organization with the family as its central focus. Program emphasis prepares youth to assume their adult roles in a complex society. It is unique.

Future Homemakers of America

Future Homemakers of America is a national vocational student organization of 300,000 home economics students through grade 12. It is the only in-school student organization with the family as its central focus. Program emphasis prepares youth to assume their adult roles in a complex society. It is unique.

Hillister News

We are sorry to know that B.D. Brasher is in Tyler County Hospital and is not doing well. Mrs. Vivian Pope is at home from St. Elizabeth hospital and her condition is fair. Karen Pender-gaster came home from St. Elizabeth late Saturday. She is slowly recovering.

Mr. & Mrs. B.J. Smith were in Port Neches, Texas Wednesday to see their daughter Linda Sue Williams who is recovering from minor surgery. Mrs. Satterwhite of Center came on Friday and spent the day with relatives.

Woodville Theater To Meet

The board of directors of the Woodville Little Theater will meet Thursday night at 7 o'clock at the Community Room of Citizens State Bank. Plans will be made for the next two productions of the group.

Beech Creek News

The regular monthly meeting of Beech Creek Extension Homemakers Club was held in Spurger Lion's Den July 20, 1988. Our president, Millie Morrison, led the salute to the flag. Betty Han gave the devotion. Vivian Jordan led in prayer.

Nineteen members and one guest answered roll call. What July 4th means to me. Felicitous expressions of freedom were the favorite response.

Doors were won by Agnes Tanton and Mary Ann Sheffield. Margaret bought the white elephant furnished by Fannie Mabel.

Hotter than 1111—Mark Odum, Chief of the Ivanhoe Volunteer Fire Department is checking old family recipe during the Tyler County Woman's Association Barbecue Cook-Off on August 13 at the White Tail Ridge Pavilion.

seafood Buffet

Friday and Saturday night salad bar included! \$10.95

Thursday night special 5-9 p.m. Buy regular fish platter get second 1/2 price!

CATFISH DEPOT

Open Thursday 5-9 p.m., Friday & Saturday 5-10 p.m., Sunday 11-4 p.m. Highway 22N 429-5216 Spurger, Texas

Woodville Theater To Meet

The board of directors of the Woodville Little Theater will meet Thursday night at 7 o'clock at the Community Room of Citizens State Bank. Plans will be made for the next two productions of the group.

Another "Say No To Drugs" Youth Rodeo in "Buckle Series" will be held at Grangers Arena at 7 p.m. August 5th and 6th 5 miles south of Kirbyville. Open jackpot building Saturday, August 6th at 1 p.m. For information, call 423-2830.

'Say No To Drugs' Rodeo

Another "Say No To Drugs" Youth Rodeo in "Buckle Series" will be held at Grangers Arena at 7 p.m. August 5th and 6th 5 miles south of Kirbyville. Open jackpot building Saturday, August 6th at 1 p.m. For information, call 423-2830.

ABWA Holds Regular Meeting

The A.B.W.A. held its regular monthly meeting at the Golden Curral in Jasper on Tuesday, July 12. Plans were discussed for the September membership tea and a nominating committee was named for the election of officers in August.

MURRAY D. HOOKS

M.D. DIPLOMATE OF THE AMERICAN BOARD OF DERMATOLOGY ALLERGIES & DISEASES OF THE SKIN 634-7753 1141 West Frank Lufkin, Tx.

connie

FALL'S DRESS FOR RECESS COME OUT AND PLAY IN THESE FASHIONABLE FLATS

ASSORTED STYLES AND COLORS REG. \$4.00 4300

BACK TO SCHOOL SPECIAL 1988

J.B. REST & CO.



Harold and Ida Mae Murphy of Baytown were here to attend the 3rd class reunion of Woodville High School at the Woodville Inn Saturday evening and visited her brother Elton Spurlock and wife Ray.

Wedding Announcement

Mr. & Mrs. Billy Mac Hickman of Chester announce the engagement of their daughter Teresa Ann to Johnny Wright, son of Mr. & Mrs. John William Wright Sr. of Corrigan. The wedding will be held at First Baptist Church of Chester on Friday, August 19, 1988 at 7 p.m. in Chester. Friends and relatives are invited to attend.

SUMMER SIZZLER SALE! SAVE 50% AND MORE!!!

GIFT DEPARTMENT CLEARANCE SALE on Regular Stock Items From Our COUNTRY GIFT DEPARTMENT - Limited Time - Limited Quantities - SULLIVAN'S HARDWARE - 211 West Bluff - 283-2231

TRIPLE "L" EQUIPMENT RENTAL • 384-8917 • 651 E. MILAN • 651 E. JASPER

- SAND-BLASTERS AND SAND-BLASTING
- FORK LIFT GOOD IN III
- LAWN MOWERS
- GARDEN TILLERS
- AIR COMPRESSORS
- RIDING CUT-WITCH W/BLADE
- LAWN EDGERS
- PORTABLE GENERATORS
- PAVING LOT STYPPERS
- DRILLS • TILLERS • TRACTORS
- SCAFFOLDS
- HIGH PRESSURE WARMERS • CONCRETE EQUIPMENT
- AIR & ELECTRIC TOOLS • GRASS SOD CUTTER

MOVIES & NOVELTIES Hwy 190 at Railroad Tracks

Now Release Weekly

HATS-T-SHIRTS-BATTERIES-ETC....

SIGN UP & REGISTER FOR A FREE MOVIE RENTAL GIVEN AWAY DAILY

NEW RELEASES \$2.00 A Day REG. MOVIES \$1.00 A Day

RED DOT 50¢ A Day

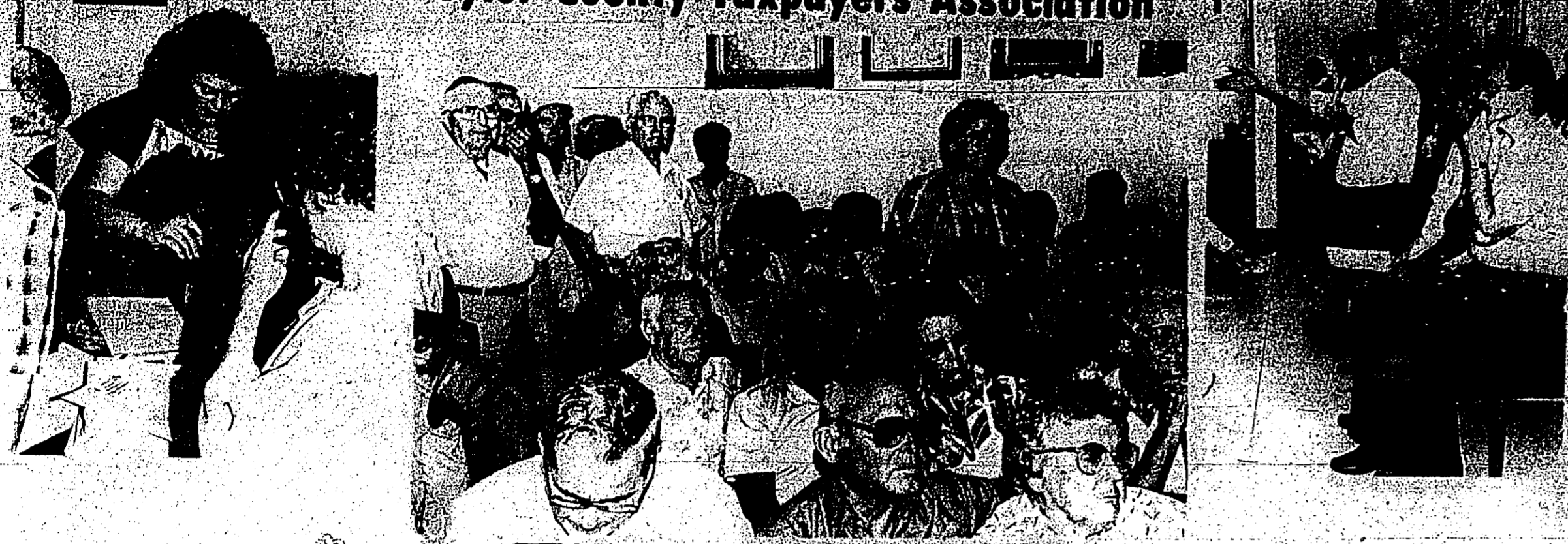
RENT 2 MOVIES—GET 2 LITER PEPSI FREE!!

20 oz Pepsi 39¢

Special Good At Woodville & Hillister Locations

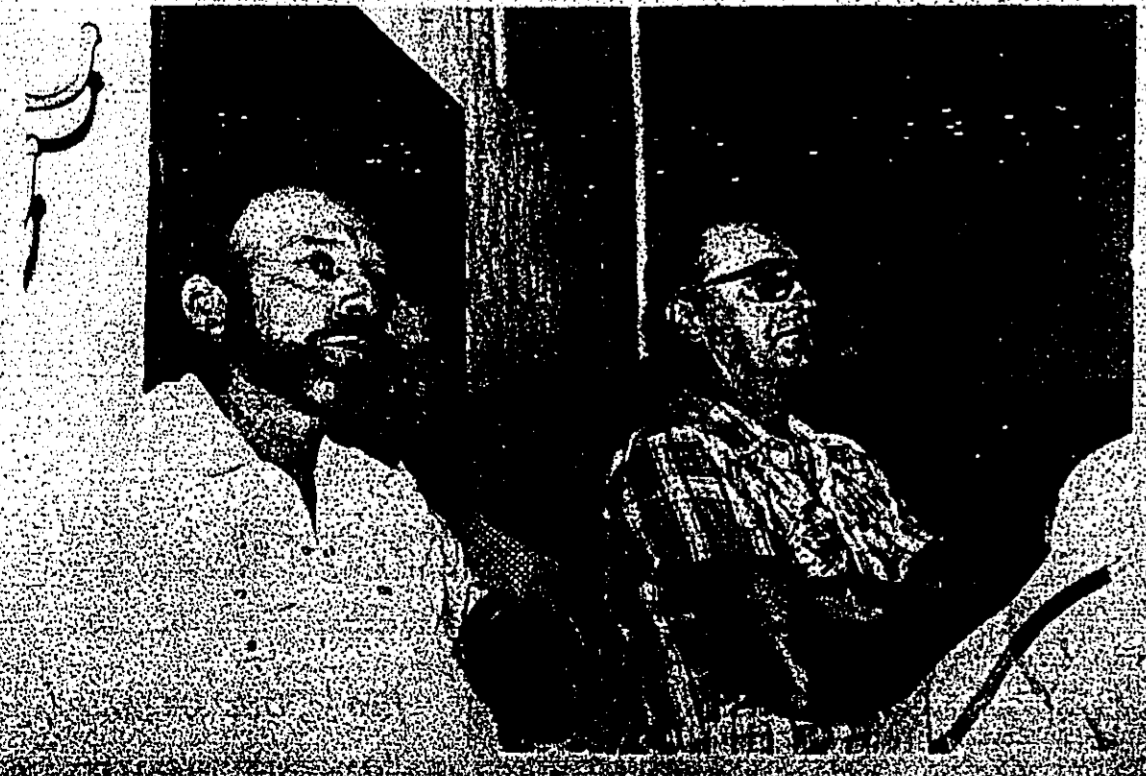
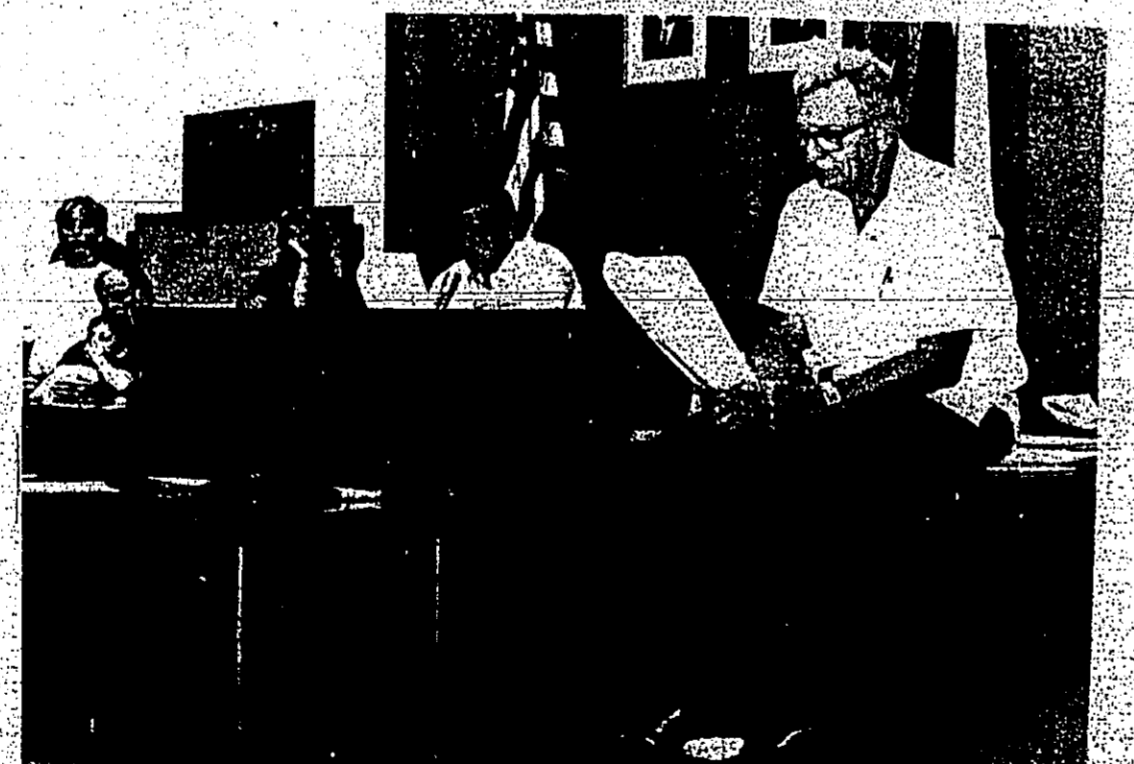
1 p.m. - 9 p.m. 7 Days A Week 283-7921

Tyler County Taxpayers Association



Taxpayer Protest

Group Forms



LARRY TREST USED CARS

SPECIAL PURCHASE OF CHRYSLER FACTORY CARS
7.7 FINANCING & FACTORY WARRANTY

1988 DODGE 600 4DR. SEDAN. Tilt. Cruise. A/C. AM/FM. \$9,995
 1988 PLYMOUTH CARAVELLE 4 DR. SEDAN. Tilt. Cruise. A/C. AM/FM. \$9,995
 1988 DODGE ARIES 4 DR. AM/FM. A/C. LIKE NEW. \$8,400 each
 1988 PLYMOUTH SUNDANCE 4 DR. Claret Red. A/C. PS. AM/FM. Rear. Depositor. more. \$8,900
7.7 FINANCING & FACTORY WARRANTY
 1986 PLYMOUTH RELIANT. Low miles. Gold. A/C. PS. Power Brakes. AM-FM. Nice Car. \$5,500
 1986 PLYMOUTH RELIANT. White w/Blue interior. low miles. Loaded. \$5,700
 1987 PLYMOUTH CARAVELLE 4 DR. AM/FM. PS. Rear. Depositor. RIGHT MILES/RIGHT PRICE. \$6,995
 1987 PLYMOUTH CARAVELLE. Equipped. Right PRICED RIGHT. \$6,995
 DODGE RAM 50 PICKUP. Nice truck. Low Miles. Blue & Silver. \$5,495
 1988 MITSUBISHI SPORT TRUCK. Like New. 11,000 miles. \$7,650

LARRY TREST CHRYSLER CENTER, INC.
 Hwy 69 South Woodville 283-8151

Garage Sale

GARAGE SALE - 2900 Hwy. 101 East. Clothes & Misc. Items. Thurs. thru Sat. 9-12. 283-3142
GARAGE SALE - Furniture. Clothes. Misc. in Warren. Sat. 9-12. 283-3142
GARAGE SALE - Furniture. Clothes. Misc. in Warren. Sat. 9-12. 283-3142
GARAGE SALE - Furniture. Clothes. Misc. in Warren. Sat. 9-12. 283-3142

Antiques

THE GATHERING - Basket Country. Antiques. Colmanell. 256. East Gate 1. Harrison Lakes. Turn at Country Lane & McCaffey signs. 30-11-p
PAIR - QUEEN ANNE walnut. side. chairs. \$95.00 each. 283-7642
DARK OAK ARMCHAIR 46 in. wide single door. \$145.00 call 283-7642
KITCHEN CABINETS - Mahogany. 1920's. \$150.00. doors. Victorian. \$150.00. Dogwood Antiques. 283-7642

THE TYLER COUNTY BOOSTER

SERVING TYLER COUNTY SINCE 1930

CLASSIFIED ADS GET RESULTS

Antiques

Want To Work
 housekeeping. Room & board. Plus \$100.00 per week. Call collect 214-757-6864. 30-11-c
WANTED: Female Live-in companion for elderly lady at Rockland, Tx. Some cooking and light housework. Call collect 214-757-6864. 30-11-c
SCASH'S Pay Cash & Save! 3 Bedroom, 1 1/2 Bath. \$8,900
HOME CHECK MOBILE HOMES 713-370-8900 22631 Tomball Pkwy. Tomball, Tx. 77375

Low rates make State Farm homeowners insurance a good buy.

Our service makes it even better.
 Call me
 Russ Nalley
 409 S. Mag. Woodville 283-8105

For Sale

FOR SALE: 1966 Ford 4000 Diesel Tractor & equipment + 3 point hitch backhoe. Call 283-5269. 30-11-c

88 BRONCO II \$10,995*

V6-5 Speed Overdrive, Power Steering & Brakes, Air Conditioner, AM-FM Stereo Tape, Tape, Luggage Rack, Outside Spare Tire Carrier, XL Trim PKG, Raised White Letter Tires, Luggage Rack
 *Price Includes \$500 Factory Rebate
 Corner Hwys **KNAPP FORD WOODVILLE** 283-2526

Autos For Sale

1975 Ford Courier - Good Truck. Will fit with \$500 down. 429-5275.
 1977 Pontiac 2 Dr. V-8 Auto. Will fit. with \$375 dn. 429-5275.
 1975 Chev. Monte Carlo V-8. Loaded. Will fit. with \$400 dn. 429-5275.
 1980 Chev. Malibu 4 Dr. Loaded. Nice. Car. Will fit. with \$700 dn. 429-5275.
 1978 Ford F11 6 cyl. auto will fit. with \$50 dn. 429-5275.
 1980 Chevrolet 2 dr. Auto with 450 dn. 429-5275.

KNAPP SALES

INTERSECTION HWYS. 69 & 287 283-2526

WOODVILLE

1988 LINCOLN TOWN CAR - Factory Program Cars - Fully Loaded - Leather - All Power - Full Factory New Car Warranty - Only 6400 Miles. LIKE NEW
 1988 LINCOLN TOWN CAR - Full Luxury. All Power. Low Miles. 13995.00
 1988 CADILLAC Eldorado - Air. V-8. Leather. low miles. 14595. Sale 13695.00
 1988 FORD TAURUS GL - Air. Auto. Tilt. Cruise. Power Seats & Windows. AM/FM. St. Only 3000 miles. Full Warranty. 12995.00
 1987 MERCURY Grand Marquis 4 Dr. Air. Auto. All Pwr. Low Mil. 12995.00
 1987 FORD TAURUS GL 4 Dr. Air. Auto. Pwr. AM/FM Stereo. 10995.00
 1984 LINCOLN CONTINENTAL Mark VII 2 Dr. Air. V-8. Power. Tilt. Cruise. Power Seats. Windows & Door Locks. Fully Loaded. Very Nice. 9995.00
 1988 FORD ESCORT GL 4 Dr. Air. Auto. Pwr. Steering & Pwr. Brakes. All Pwr. Cass. Only 5900 miles. Still Under Full Warranty. 9995.00
 1987 FORD TEMPO GL 4 Dr. Air. Auto. Power. AM/FM Stereo. 9995.00
 1986 FORD LTD WAGON - Air. Auto. Power. Tilt. Cruise. Power. Windows & Door Locks. AM/FM. St. W/ Wheel Covers. Was 9995.00. 7995.00
 1985 FORD CROWN VICTORIA 2 dr. Air. Auto. Power. Tilt. Cruise. Power Windows & Door Locks. AM/FM. St. W/ Wheel Covers. Was 9995.00. 7995.00
 1985 MERCURY BROUGHAM 4 Dr. Air. Auto. Power. AM/FM. St. Power Seats & Windows. Luxury Interior. 7495.00
 1986 FORD ESCORT 2 dr. Air. Power. AM/FM Stereo. Extra Nice. 5695.00
 1984 BUICK LESABRE 4 Dr. Air. Auto. Power. AM/FM Stereo. 5995.00
 1982 CHEVY CITATION 4 Dr. Air. Auto. Tilt. Cruise. AM/FM. 3495.00
 1982 FORD ESCORT 4 dr. Air. Power. 35000 One Owner Miles. 3495.00
 1981 TOYOTA TERCEL 2 dr. Air. Auto. Good Work or School Car. 1995.00

Help Wanted

RN'S NEEDED immediately opening in East Texas area. Fast growing home health agency needs registered nurses who are able to work independently and without supervision. Work Mon thru Fri 8:30 AM-5:00 PM. No weekends or on call. If shift work has gotten to be a drag and you want to work a schedule that better fits your lifestyle call us. We offer paid vacations, Co. pd. ins., life ins., mileage & exp. allow. This job is a totally different nursing experience! Call 1-800-992-6572 or 304-771-0775. Fast Service will be taking applications for one Aide to Speech therapist. (telechance) and one Aide to clean up. Adams 13th. The applicants will be found available on September 1st. Need all the applicants should live within a five mile radius of Woodville. Additional information available at the Woodville office. 283-8151

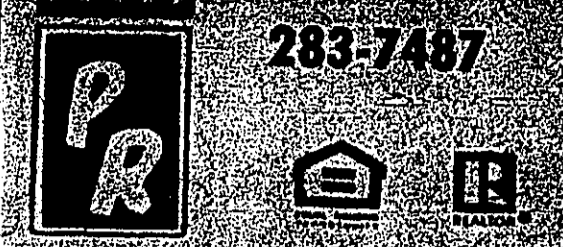
Medica Bros. Tires & Wheels

BELETED	HEAVY DUTY	TRACKER
155/80B13 165/80B13 175/80B13 TIRES	2 \$49.98	14x6 \$24.99
185/75B14 195/75B14 TIRES	2 \$63.98	15x7 \$26.99
205/75B15 215/75B15 TIRES	2 \$70.98	15x8 \$26.99
STEEL BELTED RADIAL		SPRINTER ALUMINUM
165/80B13 175/80B13 TIRES	2 \$67.98	14x6 \$77.99
185/75B14 195/75B14 TIRES	2 \$74.98	15x7 \$85.99
205/75B15 215/75B15 TIRES	2 \$84.98	15x8 \$92.99
STEEL BELTED OUTLINE WHITE LETTER		GRAND PRIX
165/80B13 175/80B13 TIRES	2 \$94.98	14x7 \$99.99
185/75B14 195/75B14 TIRES	2 \$102.98	15x7 \$97.99
205/75B15 215/75B15 TIRES	2 \$124.98	15x8 \$104.99

WOODVILLE 283-8191
 1110 N. 9th. Woodville

Medica Bros. Tires & Wheels

WOODVILLE 283-8191
 1110 N. 9th. Woodville

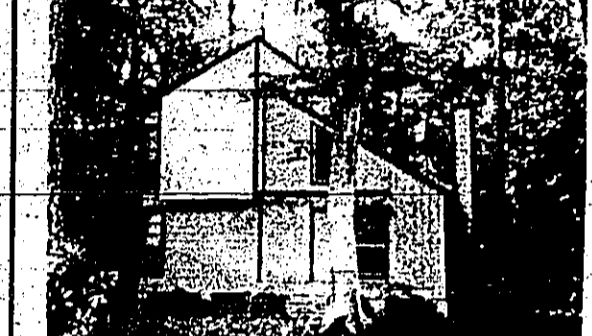


283-7487

A PICTURE IS WORTH A THOUSAND WORDS



HOW TO GET A HEAD START
Catch up to a deal like this affordable starter home on almost 4 acres for only \$16,500



STUCK ON SQUARE ONE?
Unstick yourself in this easy-to-buy 3 BR, modern home with owner financing. Only \$31,900.



RENT RUNNING YOU RAGGED?
Adorn yourself with home ownership. Try on this affordable 2 BR Brick with separate game room. Reduced to \$28,000.

WE HAVE OTHERS WAITING TO BE HEARD

An old superstition had it that a newborn baby must be carried upstairs before it is carried down. This act supposedly guaranteed the child would rise in the world and have a successful life.

JOHN'S MUFFLER SHOP
FOR ALL YOUR EXHAUST NEEDS
FREE ESTIMATES
OPEN 6 DAYS A WEEK 8-5
Mufflers Installed, While You Wait
Mechanic On Duty
"We Also Do Brake Jobs"
UNDER NEW OWNERSHIP 283-5502
ON HWY 69 SO. 2 MILES

Dogwood Antiques And Gifts

117 S. Charlton, Woodville, Tx
Tel. 409-283-7842 - On the Square Country Primitives to Formal Antiques

Also... Old Glassware Pottery
Blue Willow Oil Paintings
Old Linens and Fine Gifts

Tuesday-Sunday 10-6
Layaway Available

FOR SALE 1/2 acre, 1000 sq ft, 2 BR, 2 Bath, 2 Car garage, Call 283-3216

FOR SALE 1/2 acre, 1000 sq ft, 2 BR, 2 Bath, 2 Car garage, Call 283-3216

FOR SALE 1/2 acre, 1000 sq ft, 2 BR, 2 Bath, 2 Car garage, Call 283-3216

FOR SALE 1/2 acre, 1000 sq ft, 2 BR, 2 Bath, 2 Car garage, Call 283-3216

FOR SALE 1/2 acre, 1000 sq ft, 2 BR, 2 Bath, 2 Car garage, Call 283-3216

FOR SALE 1/2 acre, 1000 sq ft, 2 BR, 2 Bath, 2 Car garage, Call 283-3216

FOR SALE 1/2 acre, 1000 sq ft, 2 BR, 2 Bath, 2 Car garage, Call 283-3216

FOR SALE 1/2 acre, 1000 sq ft, 2 BR, 2 Bath, 2 Car garage, Call 283-3216

FOR SALE 1/2 acre, 1000 sq ft, 2 BR, 2 Bath, 2 Car garage, Call 283-3216

FOR SALE 1/2 acre, 1000 sq ft, 2 BR, 2 Bath, 2 Car garage, Call 283-3216

FOR SALE 1/2 acre, 1000 sq ft, 2 BR, 2 Bath, 2 Car garage, Call 283-3216

FOR SALE 1/2 acre, 1000 sq ft, 2 BR, 2 Bath, 2 Car garage, Call 283-3216

FOR SALE 1/2 acre, 1000 sq ft, 2 BR, 2 Bath, 2 Car garage, Call 283-3216

FOR SALE 1/2 acre, 1000 sq ft, 2 BR, 2 Bath, 2 Car garage, Call 283-3216

FOR SALE 1/2 acre, 1000 sq ft, 2 BR, 2 Bath, 2 Car garage, Call 283-3216

FOR SALE 1/2 acre, 1000 sq ft, 2 BR, 2 Bath, 2 Car garage, Call 283-3216

FOR SALE 1/2 acre, 1000 sq ft, 2 BR, 2 Bath, 2 Car garage, Call 283-3216

FOR SALE 1/2 acre, 1000 sq ft, 2 BR, 2 Bath, 2 Car garage, Call 283-3216

FOR SALE 1/2 acre, 1000 sq ft, 2 BR, 2 Bath, 2 Car garage, Call 283-3216

FOR SALE 1/2 acre, 1000 sq ft, 2 BR, 2 Bath, 2 Car garage, Call 283-3216

FOR SALE 1/2 acre, 1000 sq ft, 2 BR, 2 Bath, 2 Car garage, Call 283-3216

FOR SALE 1/2 acre, 1000 sq ft, 2 BR, 2 Bath, 2 Car garage, Call 283-3216

FOR SALE 1/2 acre, 1000 sq ft, 2 BR, 2 Bath, 2 Car garage, Call 283-3216

FOR SALE 1/2 acre, 1000 sq ft, 2 BR, 2 Bath, 2 Car garage, Call 283-3216

FOR SALE 1/2 acre, 1000 sq ft, 2 BR, 2 Bath, 2 Car garage, Call 283-3216

FOR SALE 1/2 acre, 1000 sq ft, 2 BR, 2 Bath, 2 Car garage, Call 283-3216

FOR SALE 1/2 acre, 1000 sq ft, 2 BR, 2 Bath, 2 Car garage, Call 283-3216

FOR SALE 1/2 acre, 1000 sq ft, 2 BR, 2 Bath, 2 Car garage, Call 283-3216

FOR SALE 1/2 acre, 1000 sq ft, 2 BR, 2 Bath, 2 Car garage, Call 283-3216

FOR SALE 1/2 acre, 1000 sq ft, 2 BR, 2 Bath, 2 Car garage, Call 283-3216

FOR SALE 1/2 acre, 1000 sq ft, 2 BR, 2 Bath, 2 Car garage, Call 283-3216

FOR SALE 1/2 acre, 1000 sq ft, 2 BR, 2 Bath, 2 Car garage, Call 283-3216

FOR SALE 1/2 acre, 1000 sq ft, 2 BR, 2 Bath, 2 Car garage, Call 283-3216

FOR SALE 1/2 acre, 1000 sq ft, 2 BR, 2 Bath, 2 Car garage, Call 283-3216

FOR SALE 1/2 acre, 1000 sq ft, 2 BR, 2 Bath, 2 Car garage, Call 283-3216

FOR SALE 1/2 acre, 1000 sq ft, 2 BR, 2 Bath, 2 Car garage, Call 283-3216

TRICOUNTY REAL ESTATE
283-3216

3000 Callahan Boulevard
Lufkin, Texas 75901
Telephone (409) 837-8507

O'CONNOR REAL ESTATE
283-3951

2470 Hwy 100 B

5100-5200 Hwy 100 B
2BR - \$2500 Terms
1/4-3/4 Corner 19500
1/4-3/4 Corner 27000
Sas. PM - 283-4000
Lots 2-4 Lake 20's
2-2-2 PM 40's
2-1-1 Perm. \$10,500

JACKIE BROWN REAL ESTATE
US 69 COLMESNEIL
837-2973

3300 Acre
Lake Amanda Large Lot, Comm. Water \$7,500
Lake Amanda Large Lot, Comm. Water \$7,500
Frog Pond - Nice lot w/ furnished mobile \$18,000
Frog Pond - Furn. Cabin, Well, Waterfront \$20,000
Frog Pond - Cabin, Deck, Pool \$28,500
Lake Amanda - Furnished Cabin, Picnic \$32,500
Lake Amanda - Furn. Brick, Guest House \$47,800
6 Acs. US69, City Water, Wooded \$18,000
7 Acs. Cty Rd. near US69, Fenced \$18,000
8 Acs. FM 1745, cleared, city utilities \$26,500
10 Acs. County Rd. 2, Barn, Pond, Fence \$28,000
23 Acs. Good Pasture, Brick Cabin, Fence \$46,500
25 Acs. Good Timber, Running Stream \$133,000
25 Acs. US69, Wooded, City Water \$140,000
25 Acs. US69, Wooded, City Water \$130,000
42 Acs. Recreation Area on Neches River \$62,400
60 Acs. Near FM 1745 good Timber \$80,000
64 Acs. Long Frontage on Neches \$140,000
108 Acs. County Rd. Running Creek \$100,000
Lot 2 Bd. Frame, City Water \$11,500
2 BR, 1.8 Frame, Lot, City Water \$15,000
2 Bd, 1.8 Handyman's Special 7 Acs \$20,000
3 Bd, 1.8 Frame US69 13.8 Acs \$20,500
4BD, 1 1/2 Ba, Near School Lot Carport \$23,500
2 Bd, 1.8 Frame, Past well, Pond, 15 1/2 Acs \$47,500
3 Bd, 2 Ba Brick, PP Carpet 1 Acre \$47,500
Spacious, Newly Remodeled Home 2 1/2 Acs \$60,000
3 Bd, 1.8 Frame US69 13.8 Acs \$60,000
3 Bd, 2 1/2 Ba Brick, Game m. Satell. 1 Acre \$66,000
3 Bd, 2 Ba, Nice Brick, Shop, City Ut. 2 1/2 Acs \$80,000
Log House 2 Ponds, Barn, Fenced, 15 1/2 Acs \$90,000
Schooled Cypress Log Home, Barn, Lakes, 5 1/2 Acs \$75,000
US 69, Large lot, Building \$22,500
US190 Store Bldg, House, 3 Acs. \$75,000
US69 Warren, 2 Large Metal Bldgs, 6 acs.

RN'S CALL TODAY
Woodland Heights Medical Center
THE HEART CENTER

DON'T JUST DREAM - COME TRUE!
TYLER COUNTY BOARD OF REALTORS

JERRY TOLBERT REAL ESTATE
HOMES, LAND COMMERCIAL
410 N. MAGNOLIA
WOODVILLE 283-7221

Cruise Composers Travel Agency
201 N. MAGNOLIA
WOODVILLE
(INSIDE WOODVILLE INN)
MONDAY-FRIDAY
10 A.M. - 5 P.M.

ESCORTED MOTORCOACH CRUISES
Tennessee Tour
August 2-13-1986
New England Fall Foliage Tour
September 26-October 9, 1986

FLORIDA FUN DAYS
9 day Cruise - Tour including 3 days at Disneyworld - 3 pools and 3 two-night meals
Also check with us for AIRLINE TICKETS
BUS CHARTERS
For more information, please call 283-7741

TYLER COUNTY Business & Services
WOODVILLE BULLETIN BOARD
SERVING TYLER COUNTY SINCE 1930

MORRELL'S WATER WELL SERVICE
Kapsle's Service
Woodville Call 283-2197

PRIVATE GUITAR LESSONS
20 Years Teaching Experience
CALL NOVA RAE: 283-7181

JACKIE BROWN REAL ESTATE
US 69 COLMESNEIL
837-2973

WOODVILLE AREA - 100% FINANCING
BOBBY BYRD
BUILDER
637-7299

PAYMENTS CHEAPER THAN RENT
HOMES BUILT ON YOUR LOT OR OURS

PAPER WORKS PRINTING & GRAPHICS
211 S. MAGNOLIA WOODVILLE 283-7740

THE BIG TWO ZERO IS COMING!

TV REPAIR
WOODVILLE TV SERVICE ON ALL BRANDS TV'S, VCR'S & SATELITES

THERAPY
BOB CARRINGTON, P.T.
Physical Therapy & Rehabilitation Center
150 Hwy. 190 W.
Woodville, Texas 283-7585

CARPORTS-PATIO COVERS
SCREEN ROOMS-ROOM ADDITIONS
VINYL SIDING-ROOFING
Free Estimates
SANDERSON HOME IMPROVEMENTS
Ed Sanderson • 283-5430
TEXAS VETERANS LOANS

KIRKPATRICK BROS.
Dirt Work & Dozer Top Soil
Crushed Rock 547-3221 or 547-2207

RECEPTION TECHNOLOGY
283-3212 719 S. Magnolia

WOODVILLE AREA - 100% FINANCING
BOBBY BYRD
BUILDER
637-7299

WOODVILLE'S ONLY FULL SERVICE CAR CARE STATION IS NOW AN OFFICIAL VEHICLE INSPECTION STATION
WOODVILLE GULF
283-7989
112 S. MAGNOLIA

K Hamm Furniture Restoration & Refinishing
112 Hwy 190W Woodville, Texas
283-7450
Reupholstery, 1 1/2 m. from courthouse after 5p.m.

BUD'S BACKHOE SERVICE
25 YRS EXPERIENCE
HOT LINE WORK
FREE ESTIMATES
PHONE - 834-2993

RECEPTION TECHNOLOGY
283-3212 719 S. Magnolia

WOODVILLE AREA - 100% FINANCING
BOBBY BYRD
BUILDER
637-7299

Directory of Professional Services

INSURANCE
EAST TEXAS FUNERAL SERVICE LIFE INSURANCE COMPANY
(A Stipulated Premium Company)
Woodville, Texas
(409) 283-2511
Represented by: Edwards Funeral Home

ANTIQUES
Old Clocks Repaired
30 Years Experience
Work Guaranteed
McCormick's Antiques
625 Maplewood
Kountze, Texas 77425
Phone 246-3297

ENGRAVING
TROUBLE ETC.
Golden Rule Traps & Poles
Pineapple Traps
Walker's Traps
Arts & Crafts Supplies
809 W. Blvd.
Woodville, Texas 77468
Sandra Patricelli
(409) 283-7450

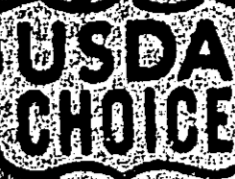
FANTASTIC SAVINGS IN ALL DEPTS

5 LB OR MORE
FRESH 

GROUND BEEF

99¢

LB



BEEF T-BONE STEAK

\$2.99

LB

BOB'S Fairway Foods

Open 11:00 AM
DAILY
Mon-Thru Sat
Sunday
9:00 AM - 7:00 PM

SALE DATES: JULY 17 - AUGUST 3, 1981

WEDNESDAY SENIOR CITIZENS 10% DISCOUNT
WE ACCEPT USDA FOOD STAMPS
WE ACCEPT WIC

1111 SOUTH MAGNOLIA
"SMALL ENOUGH TO CARE, BIG ENOUGH TO SERVE YOU"

WE RESERVE THE RIGHT TO LIMIT QUANTITIES

A SMILE IN EVERY AISLE....

GUARANTEED TO HAVE THE PRODUCT OR YOU GET A REFUND!
WE GUARANTEE FRESHNESS AND LOW PRICES!!
SATISFACTION GUARANTEED!!

THIS WEEK'S SMILE OF THE WEEK
ROSE COLLINS - CLERK/CASHIER

- BEF BONELESS CHUCK STEAK LB \$1.49
- BEF BONELESS RIB EYE STEAK LB \$4.49
- BEF BONELESS TRIMMED BRISKET LB \$1.69
- PIER LEG QUARTERS LB 59¢
- ROCK ROLL SAUSAGE LB 99¢
- ARMOUR CHICKEN FRIED BEEF PATTIES LB 99¢
- CHICKEN BEEF PATTIES 1 LB BOX \$3.99

BEF BONELESS WHOLE

RIB EYES

\$3.99

LB

BEF BONELESS WHOLE

TOP SIRLOINS

\$2.29

LB

BEF BONELESS BRISKET

\$1.09

LB

BEF SPARE RIBS

99¢

LB

BAR-B-MEAT FRANKS

69¢

12 OZ

BEF BONELESS

CHUCK ROAST

\$7.29

LB

- BEF BOLOGNA 1 LB \$3.59
- BEF LUNCHEON MEAT 1 LB \$3.59
- BEF COOKED SALAMI 1 LB \$3.59
- BEF MEAT WIENERS 1 LB \$3.59
- BEF BACON 1 LB \$3.59
- BEF HOT LINKS 1 LB \$3.59

40¢ OFF TIDE



DETERGENT

\$7.29

42 OZ

LIMIT 1 WITH \$10.00 PURCHASE

PARADE PAPER TOWELS

2/\$1.00

JUMBO

PARADE FLOUR

79¢

5 LB BAG

PARADE BATHROOM TISSUE

79¢

4 ROLL

PEPSI COLA

\$1.18

6 PK 12 OZ CANS

LOU ANA VEGETABLE OIL

\$1.99

48 OZ

STAR KIST TUNA

49¢

5 1/2 OZ

LIMIT 2 WITH \$10.00 PURCHASE

- SHOWBOAT PORK & BEANS 15 OZ 3/\$1.00
- KINGSFORD REG OR MESQUITE CHARCOAL 10 LB \$2.79
- PARADE PEAR HALVES 16 OZ CAN 69¢
- PURINA DOG CHOW 25 LB BAG \$7.49
- MRS. BUTTERWORTH'S REG OR LITE SYRUP 24 OZ \$2.29
- JIFFY CORN MUFFIN MIX 8.5 OZ 4/\$1.00

WE DELIVER VALUE BECAUSE WE VALUE OUR CUSTOMERS

PRODUCE Special

GOLDEN RIPE BANANAS 4/\$1.00

LBS

FRESH CALIFORNIA PEACHES

59¢

LB

- THOMPSON SEEDLESS GRAPES LB 89¢
- GREAT SALAD TOPPER BROCCOLI BUNCH 69¢
- JUMBO SWEET RED ONIONS LB 49¢
- CALIFORNIA BARTLETT PEARS LB 49¢
- RED-GREEN-BLACK PLUMS LB 59¢
- LOCAL MUSTARD GREENS BUNCHES 2/\$1.00

- FRANCH'S MUSTARD 16 OZ 79¢
- TOASTED BERRIED BEANS 18 OZ 55¢
- DORITOS ALL FLAVORS \$1.79
- DIY 2 BBS OR PEPPER IN SACK CANDY \$1.79
- PIZZA CRUNCH CHEETOS \$1.99

DAIRY FAVORITES

TROPHY CUP HOMO MILK

\$1.89

GAL

- KRAFT SINGLES 12 OZ \$1.79
- MINUTE-MAID 100% ORANGE JUICE 64 OZ \$1.99
- LAND O PINES FRUIT DRINK 99¢

QUALITY BRAND NAME

BANQUET POT PIES

2/88¢

7 OZ

- SARA LEE POUND CAKE 12 OZ \$1.59
- TOTINO'S TEMPTING TOPPINOS PIZZA 12 OZ \$1.39
- BIRDSEYE COOL WHIP 12 OZ \$1.29

BOB'S Fairway HOME VIDEO

283-7818 283-7818

BEST SELECTION IN TOWN!

- NEW RELEASES \$2.50 OVERNIGHT
- REGULAR MOVIES \$1.00 OVERNIGHT
- OVER 300 49¢ MOVIES
- NEW ARRIVALS WALLSTREET
- SUSPECT
- RAW
- D.O.A.
- ACTION JACKSON
- MOVING
- COMING
- RODSTRUCK
- GOOD-MORNING VIETNAM
- PLANES, TRAINS & AUTOMOBILES
- LAST EMPEROR
- EMPIRE OF THE SUN
- 17 AGAIN

ALABAMA COUSHATTA INDIAN RESERVATION
INVITATION FOR BID
 August 1988 at the Tribal Council of the Alabama-Coushatta Indian Reservation. The Administration Building is located in the Indian Village and at the...
 Details and plans may be obtained by the Indian Village and at the...
 The work described here-time publicly opened will receive consideration...
 The work will be received until... and read aloud.

GRACE TROTTER THOUGHT BALLOONS WERE FOR KIDS UNTIL ONE SAVED HER LIFE



When Grace Trotter learned that two of the arteries to her heart were severely blocked, she looked to her cardiologist, Dr. J. S. Chandra, for an answer.
 A few years ago the only solution would have been open heart surgery.
 Today, a relatively new procedure called balloon angioplasty saved Grace from the ordeal of surgery. In the Cardiac Catheterization Laboratory at Woodland Heights Medical Center, Dr. Chandra and Dr. R. R. Bachireddy threaded a very tiny and flexible tube through Grace's arteries to the point of the blockages. At the end of the tube was a tiny balloon—when the balloon was inflated it pushed the blockages aside and opened the arteries for greater blood flow.
 Today Grace is well on the road to recovery. And now she knows that balloons are not just for kids.



WOODLAND HEIGHTS MEDICAL CENTER
 500 Gaslight Boulevard, Lufkin, Texas

St. Paul's Episcopal School
Registration Open:
 Pre-School - Age 3 & 4
THREE DAY or FIVE DAY Program
 \$70 a month / \$90 a month
 Our Early Childhood Program is designed to challenge Pre-Schoolers at an individual pace in a loving Christian environment.
 Kindergarten Through Fourth Grade:
 \$130 a month
Before & After School Care
 7:30 - 5:30

St. Paul's Episcopal School
 Registration Open:
 Pre-School - Age 3 & 4
THREE DAY or FIVE DAY Program
 \$70 a month / \$90 a month
 Our Early Childhood Program is designed to challenge Pre-Schoolers at an individual pace in a loving Christian environment.
 Kindergarten Through Fourth Grade:
 \$130 a month
Before & After School Care
 7:30 - 5:30

Small classes, enriched curriculum in a Christian environment.
 Member Southwestern Assoc. of Episcopal Schools & National Assoc. of Episcopal Schools.
 FOR INFORMATION CALL
 283-7555, 8:30-11:30, M-F
 Applicants admitted without regard to race, color or ethnic origin. A limited number of scholarships are available.
 Hwy. 190 West Woodville

REQUEST FOR PROPOSAL
 The Deep East Texas Council of Governments, by authority of the Deep East Texas Private Industry Council, is seeking proposals for projects funded by Section 123 of the Training Partnership Act. Total funds anticipated are \$139,949. The period of performance will be July 1, 1988-June 30, 1989. Deadline for submission is August 15, 1988. For more information contact: Betty Brown, JTPA Director; P.O. Box 1423; Lufkin, TX 75901; (409)634-2247. 30-11-c

Enjoy Tyler County Each Week....In The Comfort Of Your Home.

SUBSCRIBE

Yes, please enroll me as a subscriber to The Tyler County Booster. Enclosed find my check for \$7.50 county, \$8.50 Polk, Angelina, Jasper & Hardin counties, \$9.50 other Texas cities & localities, \$10.50 other states, and \$12.50 overseas.

NAME _____
 ADDRESS _____

Mail to The Tyler County Booster, P.O. Box 248, Woodville, Texas 75979

The Tyler County Booster publishes news of Tyler County people and events of today just as it did when it first began to publish over a half century ago. We are glad that you choose visit our area, and hope that you will look forward to being a part of Tyler County each week.

TIME'S RUNNING OUT.....
BOOSTER SUBSCRIPTIONS GO UP
AUGUST 1, 1988!!!

JONES Decorating Center
 ESTABLISHED 1954
FAMOUS NAME BRANDS
 Mill Direct To You
 7500 Sq. Ft. of Show Room With Samples
 Free Estimates & Decorating Help
 Top Quality Installation Available

CARPETS
VINYL FLOORING
TILE
DRAPES
MINI-BLINDS
WALL COVERINGS

385-5257
 260 Hwy. 96 So. Sibley, Tx.

"COMING NEXT WEEK"

WALMART
Pictureland Portrait Studio
Back To School Special
Save 25%
 on our 20-piece portrait package
NOW ONLY \$9.70
 (Reg. 12.95)

two 8x10s, three 5x7s and fifteen wallets on your choice of a traditional, austere, spring or fall background

Bring in any lower-priced advertised offer and we'll match it! We welcome everyone... babies, children, adults and family groups. No appointment is ever necessary. Satisfaction guaranteed. Special Events Portrait Packages available in 1 1/2 hour Express and Other portrait sessions. All portrait packages include hair, makeup and a professional person. All portrait packages include a 10% off the total bill. Studio Hours Daily 10 a.m. until one hour prior to store closing. Sunday (white open) store opening until one hour prior to store closing.

5 Days Only!
 Tuesday, August 2 through Saturday, August 6
WOODVILLE, TX
 1121 SOUTH MAGNOLIA

BACK TO SCHOOL

Mead 17¢ Each
 Mead Twin Pocket Portfolio
 *Colorful cover
 Reg. 20¢

notebook paper 2 \$1
 200 Sheets 10 1/2" x 8 1/2" WIDE RULE
 Reg. 75¢-92¢ Ea.

SAVE 34%
 Notebook Paper
 *200 Count
 *Wide or narrow rule
SAVE 45%
 Crayola
 24 Count Crayons
 *Non-toxic
 Your Choice

SAVE 23%
 Barbours School Box
 *Attractive kid designs
 *Sturdy construction
 *For all school supplies

43¢
 Reg. 56¢

SAVE 24%
 Index Dividers
 *Wide or narrow page
38¢
 Reg. 50¢

SAVE 24%
 250 Sheet
 *Wide or narrow
97¢
 Reg. 128

SAVE 33%
 Your Choice
\$1
 Reg. 1.50

SAVE 34%
3.99¢
 Reg. 5.99 Ea.

SAVE 24%
2 \$3
 Reg. 7.75 Ea.

SAVE 33%
 Your Choice
\$1
 Reg. 1.50

WALMART

FREE FISH WRAP

(WITH YOUR SUBSCRIPTION)

THE TYLER COUNTY
BOOSTER
SERVING TYLER COUNTY SINCE 1930

FOLD DOWN



We hate waste; we love to sell newspapers;
and we're not too proud to recommend that you wrap fish in
THE TYLER COUNTY BOOSTER. We do.
Subscribe now, you can get a guaranteed supply
of fish wrap for a year or more.

FOLD UP

SUBSCRIBE.

- \$7.50 In Tyler County
- \$8.50 In Polk, Angelina, Jasper & Hardin Counties
- \$9.50 In Other Texas Cities
- \$10.50 In Other States
- \$12.50 Overseas

Name _____

Address _____

Town _____

State _____

Zip _____

Enclosed is my check for _____

Mail this coupon with payment to: Tyler County Booster, P.O. Box 248 Woodville

75979