
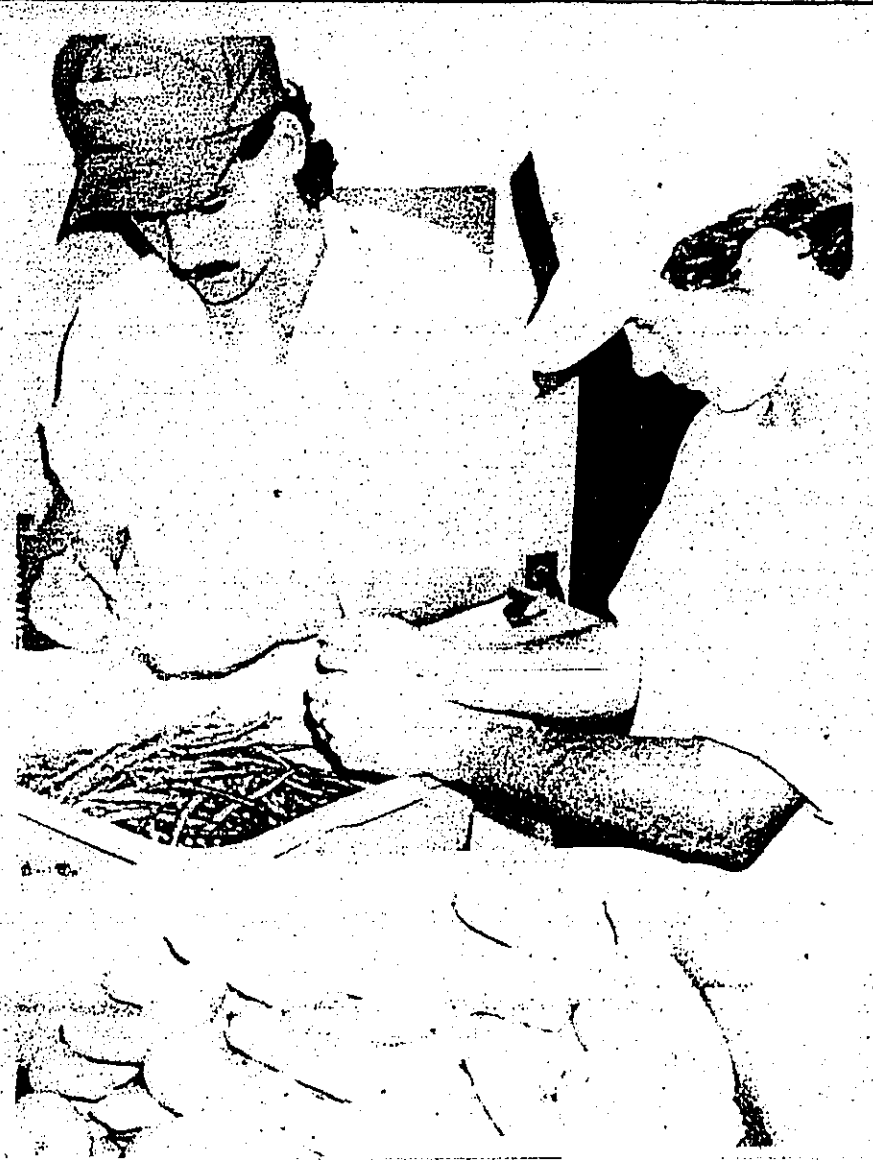


**Library Reading Program Is Full Swing.**  
The Alan Shivers library summer Reading program has already enlisted some 60 summer readers. Read about it on Page 2-A.



**25¢**

THURSDAY, JUNE 15, 1989  
Woodville, Texas 75979



**"BOOT CAMP"--**That's what Kenneth Giles(at right), a prisoner in the Tyler County Jail who was snapping beans harvested from the Justice Garden located at the rear of the facility, said while assisting fellow inmate Joe Brown on Monday as the first crop was harvested from the County Justice Center Garden.Shown above are a nice crop of beans and squash.

## Taxpayers Association To Meet

The regular meeting of the Tyler County Taxpayers Association Board of Directors will be held Monday, June 19 at 7:30 p.m., Citizens State Bank Bldg Board Room. The Public is invited and the Board of Directors will appreciate attendance at the meeting to assist in addressing notices to the general membership for the annual meeting to be held in July.

Gil Tubb who has served as the Chamber Co-ordinator for the project. Tubb also asked that the council

ick Mattox, and Percy Lewis. The group expressed concern about working with the city in

working with the city in maintenance of the city park near the old Scott school. The group was also

interested to learn about the cities priority scheduling for the implementas-

tion of the \$2 million Woodville City Streets improvements program.

you're going to run out of money before all the streets which need improvement

are completed...that's out of concern," Lewis added. In other business the

council signed a resolution of support asking the State of Texas to consider Odenville as an expanded

facilities site for another 1,000 man prison unit here. The request was made by

*(Continued)*

100

1991



Why be afraid you ask  
before all the streets of  
Levi Mountain Wind

1. The Board of Directors shall have the authority to  
 2. establish the policies and procedures for the  
 3. management of the Corporation.

Four are: Sunset Baptist  
Road, Seneca road and  
Spring Valley Roads in

all which he said blocks the current local aircraft

THE UNIVERSITY OF CHICAGO

Grove, Wisconsin, could  
million. He said the city  
additional outlet.

probably install a system that would cost \$15 for the U.S.

100

here for \$500,000 to \$1 million plus a basic fee and \$2.50 for each

**CABLE TV SALESMAN**—Richard Peters shows Monroney informing the County Commissioners of the advantages of a Cable TV system "for all types County residents" to the company. The station Cable TV of Lexington, Texas and Howard Grove, Wisconsin, could probably install a system here for \$500,000 to \$1 million, he said. The service would cost \$15 for the basic fee and \$2.50 for each additional channel.



# Area Briefs

## Harold L. Freeman

Harold Lloyd Freeman, 61, of Woodville passed away Sunday at his residence. He was a local TV repairman with over 31 years of

service in Tyler County. Services are pending at Riley Funeral Home in Woodville.

## Alease B. Riley

Mrs. Alease B. Riley, 79, died Thursday, June 8, 1989 at Pineywood Acres Nursing Home, Corrigan, Texas.

Funeral Services were held at the Corrigan Funeral Home Chapel at 2:00 Sunday, June 11, 1989 with Rev. Brent Trotter officiating. Burial followed at the Mt. Zion Cemetery, Chester, Texas.

A resident of Chester, Texas, Mrs. Riley was a member of the Stryker Baptist Church, Mrs. Riley

## Garner Inducted To Gamma Beta Phi

Waco, Texas. Karen Royer Garner, formerly of Woodville, was one of more than 400 students at Baylor University recently inducted into Gamma Beta Phi national honor society. Gamma Beta Phi is a scholastic organization that recognizes the top 15 percent of students in each class.

Garner, a senior majoring in elementary education, is the daughter of Edward and Ann Royer of 925 FM 1746 in Woodville. She is married to Curt Garner of Axtell.

## Howell-Best Family Reunion

The Annual Howell-Best Family Reunion will be held on Saturday, June 24th, at the Lions Den, one mile East of Woodville on Hwy 190.

Family, relatives, neighbors, and friends are invited. Bring a basket lunch and visit with us.

## Lions To Install Officers

Lion Chris Roark, Past District Governor of District 251 International Association of Lions Clubs will install the Officers and Directors of the Chester Lions Club on June 15, at the Annual Chester Lions Club meeting, Tuesday, June 20th, 10 a.m. at the Lions Den, about one mile East off 190. This is a very important meeting. Unless more interest is shown in attendance etc., we will be forced to discontinue this club for the Senior Citizens of Tyler County.

Come bring your favorite dish and enjoy games, lunch and fellowship.

## Tyler County Retirees To Meet

The Tyler County Retiree Club will meet, Tuesday, June 20th, 10 a.m. at the Lions Den, about one mile East off 190. This is a very important meeting. Unless more interest is shown in attendance etc., we will be forced to discontinue this club for the Senior Citizens of Tyler County.

Come bring your favorite dish and enjoy games, lunch and fellowship.

Survivors include his wife, Shirley Winkle of

Spurger; sons, Phillip Winkle, Thomas Winkle, and Jason Winkle, all of Spurger; daughters, Stephanie Winkle, Sherry Winkle, and Crystal Winkle, all of Spurger; mother, Mary Clowers of Silsbee; father, Walter Winkle of Dam B; brothers, Melvin Winkle of Silsbee and Larry Winkle of Spurger; a sister, Gayle Moore-of Fred-and-a grandson, Paulbearers were his Little League Baseball team and Spurger Little Dribblers.

Survivors include his wife, Shirley Winkle of

Spurger; sons, Phillip Winkle, Thomas Winkle, and Jason Winkle, all of Spurger; daughters, Stephanie Winkle, Sherry Winkle, and Crystal Winkle, all of Spurger; mother, Mary Clowers of Silsbee; father, Walter Winkle of Dam B; brothers, Melvin Winkle of Silsbee and Larry Winkle of Spurger; a sister, Gayle Moore-of Fred-and-a grandson, Paulbearers were his Little League Baseball team and Spurger Little Dribblers.

Survivors include his wife, Shirley Winkle of

Spurger; sons, Phillip Winkle, Thomas Winkle, and Jason Winkle, all of Spurger; daughters, Stephanie Winkle, Sherry Winkle, and Crystal Winkle, all of Spurger; mother, Mary Clowers of Silsbee; father, Walter Winkle of Dam B; brothers, Melvin Winkle of Silsbee and Larry Winkle of Spurger; a sister, Gayle Moore-of Fred-and-a grandson, Paulbearers were his Little League Baseball team and Spurger Little Dribblers.

Survivors include his wife, Shirley Winkle of

Spurger; sons, Phillip Winkle, Thomas Winkle, and Jason Winkle, all of Spurger; daughters, Stephanie Winkle, Sherry Winkle, and Crystal Winkle, all of Spurger; mother, Mary Clowers of Silsbee; father, Walter Winkle of Dam B; brothers, Melvin Winkle of Silsbee and Larry Winkle of Spurger; a sister, Gayle Moore-of Fred-and-a grandson, Paulbearers were his Little League Baseball team and Spurger Little Dribblers.

Survivors include his wife, Shirley Winkle of

Spurger; sons, Phillip Winkle, Thomas Winkle, and Jason Winkle, all of Spurger; daughters, Stephanie Winkle, Sherry Winkle, and Crystal Winkle, all of Spurger; mother, Mary Clowers of Silsbee; father, Walter Winkle of Dam B; brothers, Melvin Winkle of Silsbee and Larry Winkle of Spurger; a sister, Gayle Moore-of Fred-and-a grandson, Paulbearers were his Little League Baseball team and Spurger Little Dribblers.

Survivors include his wife, Shirley Winkle of

Spurger; sons, Phillip Winkle, Thomas Winkle, and Jason Winkle, all of Spurger; daughters, Stephanie Winkle, Sherry Winkle, and Crystal Winkle, all of Spurger; mother, Mary Clowers of Silsbee; father, Walter Winkle of Dam B; brothers, Melvin Winkle of Silsbee and Larry Winkle of Spurger; a sister, Gayle Moore-of Fred-and-a grandson, Paulbearers were his Little League Baseball team and Spurger Little Dribblers.

Survivors include his wife, Shirley Winkle of

Spurger; sons, Phillip Winkle, Thomas Winkle, and Jason Winkle, all of Spurger; daughters, Stephanie Winkle, Sherry Winkle, and Crystal Winkle, all of Spurger; mother, Mary Clowers of Silsbee; father, Walter Winkle of Dam B; brothers, Melvin Winkle of Silsbee and Larry Winkle of Spurger; a sister, Gayle Moore-of Fred-and-a grandson, Paulbearers were his Little League Baseball team and Spurger Little Dribblers.

Survivors include his wife, Shirley Winkle of

Spurger; sons, Phillip Winkle, Thomas Winkle, and Jason Winkle, all of Spurger; daughters, Stephanie Winkle, Sherry Winkle, and Crystal Winkle, all of Spurger; mother, Mary Clowers of Silsbee; father, Walter Winkle of Dam B; brothers, Melvin Winkle of Silsbee and Larry Winkle of Spurger; a sister, Gayle Moore-of Fred-and-a grandson, Paulbearers were his Little League Baseball team and Spurger Little Dribblers.

Survivors include his wife, Shirley Winkle of

Spurger; sons, Phillip Winkle, Thomas Winkle, and Jason Winkle, all of Spurger; daughters, Stephanie Winkle, Sherry Winkle, and Crystal Winkle, all of Spurger; mother, Mary Clowers of Silsbee; father, Walter Winkle of Dam B; brothers, Melvin Winkle of Silsbee and Larry Winkle of Spurger; a sister, Gayle Moore-of Fred-and-a grandson, Paulbearers were his Little League Baseball team and Spurger Little Dribblers.

Survivors include his wife, Shirley Winkle of

Spurger; sons, Phillip Winkle, Thomas Winkle, and Jason Winkle, all of Spurger; daughters, Stephanie Winkle, Sherry Winkle, and Crystal Winkle, all of Spurger; mother, Mary Clowers of Silsbee; father, Walter Winkle of Dam B; brothers, Melvin Winkle of Silsbee and Larry Winkle of Spurger; a sister, Gayle Moore-of Fred-and-a grandson, Paulbearers were his Little League Baseball team and Spurger Little Dribblers.

Survivors include his wife, Shirley Winkle of

Spurger; sons, Phillip Winkle, Thomas Winkle, and Jason Winkle, all of Spurger; daughters, Stephanie Winkle, Sherry Winkle, and Crystal Winkle, all of Spurger; mother, Mary Clowers of Silsbee; father, Walter Winkle of Dam B; brothers, Melvin Winkle of Silsbee and Larry Winkle of Spurger; a sister, Gayle Moore-of Fred-and-a grandson, Paulbearers were his Little League Baseball team and Spurger Little Dribblers.

Survivors include his wife, Shirley Winkle of

Spurger; sons, Phillip Winkle, Thomas Winkle, and Jason Winkle, all of Spurger; daughters, Stephanie Winkle, Sherry Winkle, and Crystal Winkle, all of Spurger; mother, Mary Clowers of Silsbee; father, Walter Winkle of Dam B; brothers, Melvin Winkle of Silsbee and Larry Winkle of Spurger; a sister, Gayle Moore-of Fred-and-a grandson, Paulbearers were his Little League Baseball team and Spurger Little Dribblers.

Survivors include his wife, Shirley Winkle of

Spurger; sons, Phillip Winkle, Thomas Winkle, and Jason Winkle, all of Spurger; daughters, Stephanie Winkle, Sherry Winkle, and Crystal Winkle, all of Spurger; mother, Mary Clowers of Silsbee; father, Walter Winkle of Dam B; brothers, Melvin Winkle of Silsbee and Larry Winkle of Spurger; a sister, Gayle Moore-of Fred-and-a grandson, Paulbearers were his Little League Baseball team and Spurger Little Dribblers.

Survivors include his wife, Shirley Winkle of

Spurger; sons, Phillip Winkle, Thomas Winkle, and Jason Winkle, all of Spurger; daughters, Stephanie Winkle, Sherry Winkle, and Crystal Winkle, all of Spurger; mother, Mary Clowers of Silsbee; father, Walter Winkle of Dam B; brothers, Melvin Winkle of Silsbee and Larry Winkle of Spurger; a sister, Gayle Moore-of Fred-and-a grandson, Paulbearers were his Little League Baseball team and Spurger Little Dribblers.

Survivors include his wife, Shirley Winkle of

Spurger; sons, Phillip Winkle, Thomas Winkle, and Jason Winkle, all of Spurger; daughters, Stephanie Winkle, Sherry Winkle, and Crystal Winkle, all of Spurger; mother, Mary Clowers of Silsbee; father, Walter Winkle of Dam B; brothers, Melvin Winkle of Silsbee and Larry Winkle of Spurger; a sister, Gayle Moore-of Fred-and-a grandson, Paulbearers were his Little League Baseball team and Spurger Little Dribblers.

Survivors include his wife, Shirley Winkle of

Spurger; sons, Phillip Winkle, Thomas Winkle, and Jason Winkle, all of Spurger; daughters, Stephanie Winkle, Sherry Winkle, and Crystal Winkle, all of Spurger; mother, Mary Clowers of Silsbee; father, Walter Winkle of Dam B; brothers, Melvin Winkle of Silsbee and Larry Winkle of Spurger; a sister, Gayle Moore-of Fred-and-a grandson, Paulbearers were his Little League Baseball team and Spurger Little Dribblers.

## Riding Class

June 24

There will be a Tyler County 4H Show, Saturday, June 24th featuring Western and English classes in three divisions. Trophies for Highest and Reserve.

Ribbons 1st-6th in all classes, participant ribbons for all riders 12 and under in every class. Three dollars per class entry fee required. For more information contact Kay Hicks 283-5034 or Bob Armentrout 283-2482.

Survivors include his wife, Shirley Winkle of

Spurger; sons, Phillip Winkle, Thomas Winkle, and Jason Winkle, all of Spurger; daughters, Stephanie Winkle, Sherry Winkle, and Crystal Winkle, all of Spurger; mother, Mary Clowers of Silsbee; father, Walter Winkle of Dam B; brothers, Melvin Winkle of Silsbee and Larry Winkle of Spurger; a sister, Gayle Moore-of Fred-and-a grandson, Paulbearers were his Little League Baseball team and Spurger Little Dribblers.

Survivors include his wife, Shirley Winkle of

Spurger; sons, Phillip Winkle, Thomas Winkle, and Jason Winkle, all of Spurger; daughters, Stephanie Winkle, Sherry Winkle, and Crystal Winkle, all of Spurger; mother, Mary Clowers of Silsbee; father, Walter Winkle of Dam B; brothers, Melvin Winkle of Silsbee and Larry Winkle of Spurger; a sister, Gayle Moore-of Fred-and-a grandson, Paulbearers were his Little League Baseball team and Spurger Little Dribblers.

Survivors include his wife, Shirley Winkle of

Spurger; sons, Phillip Winkle, Thomas Winkle, and Jason Winkle, all of Spurger; daughters, Stephanie Winkle, Sherry Winkle, and Crystal Winkle, all of Spurger; mother, Mary Clowers of Silsbee; father, Walter Winkle of Dam B; brothers, Melvin Winkle of Silsbee and Larry Winkle of Spurger; a sister, Gayle Moore-of Fred-and-a grandson, Paulbearers were his Little League Baseball team and Spurger Little Dribblers.

Survivors include his wife, Shirley Winkle of

Spurger; sons, Phillip Winkle, Thomas Winkle, and Jason Winkle, all of Spurger; daughters, Stephanie Winkle, Sherry Winkle, and Crystal Winkle, all of Spurger; mother, Mary Clowers of Silsbee; father, Walter Winkle of Dam B; brothers, Melvin Winkle of Silsbee and Larry Winkle of Spurger; a sister, Gayle Moore-of Fred-and-a grandson, Paulbearers were his Little League Baseball team and Spurger Little Dribblers.

Survivors include his wife, Shirley Winkle of

Spurger; sons, Phillip Winkle, Thomas Winkle, and Jason Winkle, all of Spurger; daughters, Stephanie Winkle, Sherry Winkle, and Crystal Winkle, all of Spurger; mother, Mary Clowers of Silsbee; father, Walter Winkle of Dam B; brothers, Melvin Winkle of Silsbee and Larry Winkle of Spurger; a sister, Gayle Moore-of Fred-and-a grandson, Paulbearers were his Little League Baseball team and Spurger Little Dribblers.

Survivors include his wife, Shirley Winkle of

Spurger; sons, Phillip Winkle, Thomas Winkle, and Jason Winkle, all of Spurger; daughters, Stephanie Winkle, Sherry Winkle, and Crystal Winkle, all of Spurger; mother, Mary Clowers of Silsbee; father, Walter Winkle of Dam B; brothers, Melvin Winkle of Silsbee and Larry Winkle of Spurger; a sister, Gayle Moore-of Fred-and-a grandson, Paulbearers were his Little League Baseball team and Spurger Little Dribblers.

Survivors include his wife, Shirley Winkle of

Spurger; sons, Phillip Winkle, Thomas Winkle, and Jason Winkle, all of Spurger; daughters, Stephanie Winkle, Sherry Winkle, and Crystal Winkle, all of Spurger; mother, Mary Clowers of Silsbee; father, Walter Winkle of Dam B; brothers, Melvin Winkle of Silsbee and Larry Winkle of Spurger; a sister, Gayle Moore-of Fred-and-a grandson, Paulbearers were his Little League Baseball team and Spurger Little Dribblers.

Survivors include his wife, Shirley Winkle of

Spurger; sons, Phillip Winkle, Thomas Winkle, and Jason Winkle, all of Spurger; daughters, Stephanie Winkle, Sherry Winkle, and Crystal Winkle, all of Spurger; mother, Mary Clowers of Silsbee; father, Walter Winkle of Dam B; brothers, Melvin Winkle of Silsbee and Larry Winkle of Spurger; a sister, Gayle Moore-of Fred-and-a grandson, Paulbearers were his Little League Baseball team and Spurger Little Dribblers.

Survivors include his wife, Shirley Winkle of

Spurger; sons, Phillip Winkle, Thomas Winkle, and Jason Winkle, all of Spurger; daughters, Stephanie Winkle, Sherry Winkle, and Crystal Winkle, all of Spurger; mother, Mary Clowers of Silsbee; father, Walter Winkle of Dam B; brothers, Melvin Winkle of Silsbee and Larry Winkle of Spurger; a sister, Gayle Moore-of Fred-and-a grandson, Paulbearers were his Little League Baseball team and Spurger Little Dribblers.

Survivors include his wife, Shirley Winkle of

Spurger; sons, Phillip Winkle, Thomas Winkle, and Jason Winkle, all of Spurger; daughters, Stephanie Winkle, Sherry Winkle, and Crystal Winkle, all of Spurger; mother, Mary Clowers of Silsbee; father, Walter Winkle of Dam B; brothers, Melvin Winkle of Silsbee and Larry Winkle of Spurger; a sister, Gayle Moore-of Fred-and-a grandson, Paulbearers were his Little League Baseball team and Spurger Little Dribblers.

Survivors include his wife, Shirley Winkle of

Spurger; sons, Phillip Winkle, Thomas Winkle, and Jason Winkle, all of Spurger; daughters, Stephanie Winkle, Sherry Winkle, and Crystal Winkle, all of Spurger; mother, Mary Clowers of Silsbee; father, Walter Winkle of Dam B; brothers, Melvin Winkle of Silsbee and Larry Winkle of Spurger; a sister, Gayle Moore-of Fred-and-a grandson, Paulbearers were his Little League Baseball team and Spurger Little Dribblers.

Survivors include his wife, Shirley Winkle of

Spurger; sons, Phillip Winkle, Thomas Winkle, and Jason Winkle, all of Spurger; daughters, Stephanie Winkle, Sherry Winkle, and Crystal Winkle, all of Spurger; mother, Mary Clowers of Silsbee; father, Walter Winkle of Dam B; brothers, Melvin Winkle of Silsbee and Larry Winkle of Spurger; a sister, Gayle Moore-of Fred-and-a grandson, Paulbearers were his Little League Baseball team and Spurger Little Dribblers.

Survivors include his wife, Shirley Winkle of

Spurger; sons, Phillip Winkle, Thomas Winkle, and Jason Winkle, all of Spurger; daughters, Stephanie Winkle, Sherry Winkle, and Crystal Winkle, all of Spurger; mother, Mary Clowers of Silsbee; father, Walter Winkle of Dam B; brothers, Melvin Winkle of Silsbee and Larry Winkle of Spurger; a sister, Gayle Moore-of Fred-and-a grandson, Paulbearers were his Little League Baseball team and Spurger Little Dribblers.

Survivors include his wife, Shirley Winkle of

Spurger; sons, Phillip Winkle, Thomas Winkle, and Jason Winkle, all of Spurger; daughters, Stephanie Winkle, Sherry Winkle, and Crystal Winkle, all of Spurger; mother, Mary Clowers of Silsbee; father, Walter Winkle of Dam B; brothers, Melvin Winkle of Silsbee and Larry Winkle of Spurger; a sister, Gayle Moore-of Fred-and-a grandson, Paulbearers were his Little League Baseball team and Spurger Little Dribblers.

Survivors include his wife, Shirley Winkle of

Spurger; sons, Phillip Winkle, Thomas Winkle, and Jason Winkle, all of Spurger; daughters, Stephanie Winkle, Sherry Winkle, and Crystal Winkle, all of Spurger; mother, Mary Clowers of Silsbee; father, Walter Winkle of Dam B; brothers, Melvin Winkle of Silsbee and Larry Winkle of Spurger; a sister, Gayle Moore-of Fred-and-a grandson, Paulbearers were his Little League Baseball team and Spurger Little Dribblers.

Survivors include his wife, Shirley Winkle of



**COUPLE MARKS 60TH ANNIVERSARY**— Patrick and Lucille Conner celebrated their 60th wedding anniversary with a reception in their honor held at the Our Lady of the Pines Catholic Church on May 20, 1989. The couple was married on May 18, 1929 in Ferguson, Missouri. They have two sons who are married: Rod and B.J. Conner of Lumberton and Frank and Norma Conner of Kingwood, Tx. The couple also boasts seven grandchildren and seven great-grandchildren.

## 60 Youth In Reading Program

By early Monday a total of 60 children were participating in the Allan Shivers Library's summer reading program, according to library personnel. Registration started last Friday and will continue through all of June and most of July.

Allison Cruse, a third grader and daughter of Mr. and Mrs. Jimmy Cruse of Woodville, received the first certificate for 1989 for finishing 10 books. Bonnie Zimmerman, an upcoming fifth grader and the daughter of Mr. and Mrs. Lindy Zimmerman, Woodville, received the second certificate from the Texas State Library System, who co-sponsor the program with the local library.

A special treat from DAIRY QUEEN through the courtesy of Linda Crosby, supervisor for Woodville, Warren, and Kirbyville, was presented to each of the two early winners and will be awarded to all certificate winners in the reading club.

Joshua Cruse, son of

Mr. and Mrs. Jimmy Cruse, received the first certificate for the 1989 Read-to-Me Club in which parents read to their children.

Children registering were tagged as a "Library Friend" or with the library logo. Adults, let's have more children wearing these tags, the library director urged.

Medication is not the answer to tension headaches. Aspirin and other pain-killers may give you temporary relief—but they won't solve the problem. Once the source of the problem is found and treated, THEN you can get the relief you need.

The tension doesn't cause the headache. To treat this form of headache, attention should be paid to the bone and muscle structures.

Dr. Stephen P. Porcari, D.O., Chiropractor, 1101 West Bluff, Woodville, Texas 75979, (409)283-8133

Dr. Stephen P. Porcari, D.O., Chiropractor, 1101 West Bluff, Woodville, Texas 75979, (409)283-8133

Dr. Stephen P. Porcari, D.O., Chiropractor, 1101 West Bluff, Woodville, Texas 75979, (409)283-8133

Dr. Stephen P. Porcari, D.O., Chiropractor, 1101 West Bluff, Woodville, Texas 75979, (409)283-8133

Dr. Stephen P. Porcari, D.O., Chiropractor, 1101 West Bluff, Woodville, Texas 75979, (409)283-8133

Dr. Stephen P. Porcari, D.O., Chiropractor, 1101 West Bluff, Woodville, Texas 75979, (409)283-8133

Dr. Stephen P. Porcari, D.O., Chiropractor, 1101 West Bluff, Woodville, Texas 75979, (409)283-8133

Dr. Stephen P. Porcari, D.O., Chiropractor, 1101 West Bluff, Woodville, Texas 75979, (409)283-8133

Dr. Stephen P. Porcari, D.O., Chiropractor, 1101 West Bluff, Woodville, Texas 75979, (409)283-8133

Dr. Stephen P. Porcari, D.O., Chiropractor, 1101 West Bluff, Woodville, Texas 75979, (409)283-8133

Dr. Stephen P. Porcari, D.O., Chiropractor, 1101 West Bluff, Woodville, Texas 75979, (409)283-8133

Dr. Stephen P. Porcari, D.O., Chiropractor, 1101 West Bluff, Woodville, Texas 75979, (409)283-8133

Dr. Stephen P. Porcari, D.O., Chiropractor, 1101 West Bluff, Woodville, Texas 75979, (409)283-8133

Dr. Stephen P. Porcari, D.O., Chiropractor, 1101 West Bluff, Woodville, Texas 75979, (409)283-8133

Dr. Stephen P. Porcari, D.O., Chiropractor, 1101 West Bluff, Woodville, Texas 75979, (409)283-8133

Dr. Stephen P. Porcari, D.O., Chiropractor, 1101 West Bluff, Woodville, Texas 75979, (409)283-8133

Dr. Stephen P. Porcari, D.O., Chiropractor, 1101 West Bluff, Woodville, Texas 75979, (409)283-8133

Dr. Stephen P. Porcari, D.O., Chiropractor, 1101 West Bluff, Woodville, Texas 75979, (409)283-8133

Dr. Stephen P. Porcari, D.O., Chiropractor, 1101 West Bluff, Woodville, Texas 75979, (409)283-8133

Dr. Stephen P. Porcari, D.O., Chiropractor, 1101 West Bluff, Woodville, Texas 75979, (409)283-8133

Dr. Stephen P. Porcari, D.O., Chiropractor, 1101 West Bluff, Woodville, Texas 75979, (409)283-8133

Dr. Stephen P. Porcari, D.O., Chiropractor, 1101 West Bluff, Woodville, Texas 75979, (409)283-8133

Dr. Stephen P. Porcari, D.O., Chiropractor, 1101 West Bluff, Woodville, Texas 75979, (409)283-8133

Dr. Stephen P. Porcari, D.O., Chiropractor, 1101 West Bluff, Woodville, Texas 75979, (409)283-8133

Dr. Stephen P. Porcari, D.O., Chiropractor, 1101 West Bluff, Woodville, Texas 75979, (409)283-8133

# Dogwood Country

## FATHER'S DAY JUNE 18, 1989

**SANS-BELT SLACKS**  
20% - 40% & 50% OFF  
TRY THESE WONDERFUL SLACKS!

**MENS COOL KNIT SHIRTS**  
WITH COLLARS & SHORT-SLEEVES SOLIDS & STRIPES  
25% OFF

**MENS DRESS SHIRTS**  
ALL SHORT SLEEVE STRIPED LONG SLEEVE  
25% OFF

**Justin ROPERS FOR MEN**  
69.99

**Levi's JEANS**  
BOOT CUT 15.99  
WAIST 28-42  
LEVI'S 17.99  
WAIST 27-46

**ON THE SQUARE FREE GIFT WRAP WOODVILLE**

**you are Invited**

**OPEN HOUSE!**

Friday June 16, 1989 From 2-5 P.M.

Refreshments: Cookies & Punch

The staff and management of Southeast Texas Savings and Loan, wants to introduce everyone to Richard Davis, new President of SETSAL. Mr. Davis was Vice President of SETSAL for 14 years and now returns to greet old friends and customers. Come by Friday and say "Hello!"

Richard F. Davis President Southeast Texas Savings and Loan

**Southeast Texas Savings and Loan Association**

LOCATED 400 WEST BLUFF ST. WOODVILLE, TEXAS 75979 CALL 409-283-3747

**you are Invited**

**OPEN HOUSE!**

Friday June 16, 1989 From 2-5 P.M.

Refreshments: Cookies & Punch

The staff and management of Southeast Texas Savings and Loan, wants to introduce everyone to Richard Davis, new President of SETSAL. Mr. Davis was Vice President of SETSAL for 14 years and now returns to greet old friends and customers. Come by Friday and say "Hello!"

Richard F. Davis President Southeast Texas Savings and Loan

**Southeast Texas Savings and Loan Association**

LOCATED 400 WEST BLUFF ST. WOODVILLE, TEXAS 75979 CALL 409-283-3747



**Mrs. Johnny Grounds**

Tamyhra Birchfield, of Zavalla and Johnny Evans Grounds of Rockland were married in a candlelit ceremony at the Colmesneil Assembly of God Church on Friday June 9 at 7 p.m.

The Rev. J. C. Carter presided at the wedding which he said was his 125th.

Parents of the bride are Mr. and Mrs. Paul A. Birchfield of Zavalla and parents of the groom are Mr. and Mrs. Jack Grounds, of Rockland.

Tamyhra (Tammy) Grounds is



# OPINION

## An Experience In China

The bicycles in Beijing represent more than just the most popular type of transportation. They reflect the pace of life there. It's slow. Steady on. Half asleep.

The flight from Hong Kong to Beijing was on CAAC, the Chinese Government owned airline. Not even the Chinese would touch the airline food, which looked like boiled dragon.

The Beijing airport is about the size of the airport between Midland and Odessa. The interior walls are corrugated tin. Ours was the only plane landing. This is the main airport in the capital city of the world's most populous country.

The bustle from the airport to the hotel was along a tree shaded road that seemed to be in the middle of a big park. Flowers were blooming and crowds of people were out enjoying the scenery.

Tourism has added much to the standard of living in China. In just a few years, accommodations for visitors have gone from straw mats to five star hotels.

We stayed in the Shangri-La, the newest hotel in town. We were traveling with a group of 34 people. We were told that groups were welcome. Individual travel was discouraged. A government guide is assigned to each group of tourists.

We felt no restraint in our moving about. I took early morning walks and said "nee-how" (howdy) to the people I met. They smiled and gave me a "nee-how" in return.

Morning exercises are quite popular, by the way. Taxis were available at any hour. But in Beijing, there's no place to go. No great shopping or entertainment districts, no stores, no nightclubs, no moon. Just a few restaurants, a couple of small movie houses and a big coliseum where Chinese people go to see opera and acrobatics.

Beijing has three rivers, all polluted. Beijing residents have to boil their water before they can drink it. A two bedroom apartment rents for less than two dollars a month. Payments are made directly to the government, which owns

## Lone Protest Significant

President Bush must be wondering if it's worth getting up in the morning. After a stellar performance in Europe keeping the NATO alliance on track, he probably felt he was sailing in calm waters when he got out of the helicopter at Kennesawport for a quiet weekend.

Then on Saturday night, everything blew up in his face.

What had been cheered as a demonstration for democracy in Beijing, China by millions of Chinese college students turned ugly.

The Chinese army arrived with live ammunition, and at this time no one knows how many people have been killed.

In fact, no one knows who to call in China any more, to see who is running the country.

All the friends Bush had made over there in years past are apparently out of favor, out of government or dead.

The hard-liners, who just can't stand anything but Chairman Mao's little Red Book seem to have the upper hand.

From the best we can understand at the moment, there are a billion people in China right now who are as confused as we are.

The big chore at the moment is finding a way to get American citizens out of China before the blood bath gets worse.

So much for democracy in China.

Now we understand a little better perhaps the tighrope Gorbachev is walking in Russia. At least for the moment he is running things over there.

And apparently is going to let Poland go democratic if they want to. Watches barbed wire between themselves and Austria.

Winston Churchill's famous line "Curran is disintegrating after 45 years" may be true. And the speed with which all this is happening is mind-boggling to say the least.

And wasn't that a bit of a farce that a bi-lateral trade agreement with the Khmeri in funeral in Iran.

The religious leader who has been either hated

## Hillister Assembly Revival Emmanuel Sing

The Hillister Assembly Revival will be held at Emmanuel Sing Church on Saturday, June 17, beginning at 7 a.m. Anyone with any musical talent is invited to participate.

## The Promised Land

**Christian Book Store**  
(inside Dogwood Antiques)

**Book Of The Week**  
LIVING BEYOND THE DAILY GRIND: by Charles R. Swindoll. In the hands of a living with the new living offered by Charles Swindoll. In the hands of a living with the new living offered by Charles Swindoll. In the hands of a living with the new living offered by Charles Swindoll.

**106 S. Charlton Woodville**  
(409) 283-7842

## It's A Boy!

Rodney and Annelle DeWorin, Jr. of Warren are pleased to announce the birth of their son Rodney Brandon. Rodney was born on May 26th at the Tyler County Hospital in Woodville. He weighed 6 lbs. 10.34 oz. Proud grandparents are Rodney and Alice DeWorin Sr. and Robert and Irene Comer.

**Benefit Trailride Soon**

There will be a Benefit Trailride sponsored by the Wild-Bunch Trailride. All donations go to the Floyd Fountain Family of Warren, Tx. on June 23, 24-25.

Friday, June 23, Camp at Mickey Fountain's. Signs will be up.

The friends of some palms are over 70 feet long. Stood on its end, a leaf that length would equal the height of a seven-story building.

## Subscribe To The Booster

**Dogwood Antiques**  
"Come See Our Expanded Selection of Collectibles & Antiques!"

- \* Kitchen Collectibles \* China
- \* Art Glass \* Blue Willow
- \* Old Linens \* Jewelry
- \* Country Accessories

Hours Mon. - Fri. 9 - 5  
Sat. 10 - 4

## Your Opinion Counts!

**Tyler County Aging Services**

<b>Monday,</b> June 19:	Ham, Cheese and Macaroni; Fresh Mixed Vegetables; Crisp Slaw; Cranberry; Butter Scotch Pudding; Milk or Tea	<b>Tuesday,</b> June 20:	Roast Beef w/Gravy; Buttered Rice; Broccoli and cheese; Rolls; Milk or Tea
<b>Wednesday,</b> June 21:	Chicken Cacciatore; Creamed Potatoes; Brown Beans; Rolls; Cakes; Milk or Tea	<b>Thursday,</b> June 22:	Baked Fish; Fresh Vegetables Salad; Zucchini Slices; Cranberry; Apple Cobbler; Milk or Tea
<b>Friday</b> June 23:	Bar-b-que Beef tips; Potato Salad; Wax bean Bake; Rolls; Pineapple Pudding		

600 Elm Street,  
283-7402

## Sunny Dell News

A. T. Sturrock

Do you know how tall the old Jacinto Monument is? It stands 570 feet in the air. It is located 22 miles East of Houston (down town that is) on Texas Highway 225 and Texas 134. This is the spot of the Texas Army's victory over the Mexican Army which was commanded by General Santa Anna, on April 21, 1836. The Monument was built and completed on the same date in 1939 to commemorate the victory.

I have been there one time, but did not go to the top of the Monument. I stand 570 feet in the air. I know if there are any stairs to get down or not, but I doubt it. What would Ramey or Noah Platt had one this size out in the country. And the food was the longest day of the year. This is when the sun is straight overhead and should be the hottest day of the year, but it isn't. It is about two months later into August and then it will be hot because it will take that long for the heat to get to the earth.

With warm weather here and summer just around the corner, people who have a farm pond or lake that may be used for recreation should be getting it ready for swimmers. Following some simple safety tips and practices can help prevent accidents or even deaths, said Bob Armentrout, county agent with the Texas Agricultural Extension Service.

More than 450 people in Texas drown each year in lakes, rivers, pools and farm ponds, Bob Armentrout said. Farm ponds and lakes can be especially dangerous because of junk, rocks, stumps and snags in the water. In addition, too few ponds have rescue equipment—ropes, poles or buoys. And many times children play in ponds without proper supervision.

Farmers should provide safety equipment and signs near a swimming pond, said Bob Armentrout. Mark off safe swimming areas with buoyed lines. Accidents can be prevented and lives saved by placing signs warning of specific dangers, such as shallow water, deep water, sudden drop-off, swimming area and saving banks. Be sure to post emergency phone numbers and the location of the nearest phone. Equip ponds that are used for water recreation with rescue equipment such as ropes, buoys, poles, life preservers and life rings. In addition, have an adequate first-aid kit available and learn how to give basic first-aid treatment.

Mark off safe swimming areas with buoyed lines. Accidents can be prevented and lives saved by placing signs warning of specific dangers, such as shallow water, deep water, sudden drop-off, swimming area and saving banks. Be sure to post emergency phone numbers and the location of the nearest phone. Equip ponds that are used for water recreation with rescue equipment such as ropes, buoys, poles, life preservers and life rings. In addition, have an adequate first-aid kit available and learn how to give basic first-aid treatment.

## Make Farm Ponds, Lakes Safe

By this time it will be so hot that the chickens will lay hard boiled eggs—wells to go. Well? So What?

With warm weather here and summer just around the corner, people who have a farm pond or lake that may be used for recreation should be getting it ready for swimmers. Following some simple safety tips and practices can help prevent accidents or even deaths, said Bob Armentrout, county agent with the Texas Agricultural Extension Service.

More than 450 people in Texas drown each year in lakes, rivers, pools and farm ponds, Bob Armentrout said. Farm ponds and lakes can be especially dangerous because of junk, rocks, stumps and snags in the water. In addition, too few ponds have rescue equipment—ropes, poles or buoys. And many times children play in ponds without proper supervision.

Farmers should provide safety equipment and signs near a swimming pond, said Bob Armentrout. Mark off safe swimming areas with buoyed lines. Accidents can be prevented and lives saved by placing signs warning of specific dangers, such as shallow water, deep water, sudden drop-off, swimming area and saving banks. Be sure to post emergency phone numbers and the location of the nearest phone. Equip ponds that are used for water recreation with rescue equipment such as ropes, buoys, poles, life preservers and life rings. In addition, have an adequate first-aid kit available and learn how to give basic first-aid treatment.

## CHURCH SERVICES

**ABUNDANT LIFE FELLOWSHIP ASSEMBLY OF GOD**  
Rev. J. D. Hester, pastor. Sunday School 9:45 a.m., Morning Worship 11 a.m., Evening Worship 7 p.m., Wednesday Fellowship 7 p.m. Rev. J. D. Hester, pastor. Sunday School 9:45 a.m., Morning Worship 11 a.m., Evening Worship 7 p.m., Wednesday Fellowship 7 p.m.

**ASSEMBLY OF GOD**  
Rev. J. D. Hester, pastor. Sunday School 9:45 a.m., Morning Worship 11 a.m., Evening Worship 7 p.m., Wednesday Fellowship 7 p.m. Rev. J. D. Hester, pastor. Sunday School 9:45 a.m., Morning Worship 11 a.m., Evening Worship 7 p.m., Wednesday Fellowship 7 p.m.

**CADE MEMORIAL UNITED METHODIST CHURCH**  
Rev. James Hester, pastor. Sunday School 9:45 a.m., Morning Worship 11 a.m., Evening Worship 7 p.m., Wednesday Fellowship 7 p.m. Rev. James Hester, pastor. Sunday School 9:45 a.m., Morning Worship 11 a.m., Evening Worship 7 p.m., Wednesday Fellowship 7 p.m.

**MANN'S CHAPEL FIRST CONG. METHODIST**  
Rev. Don Hester, pastor. Sunday School 9:45 a.m., Morning Worship 11 a.m., Evening Worship 7 p.m., Wednesday Fellowship 7 p.m. Rev. Don Hester, pastor. Sunday School 9:45 a.m., Morning Worship 11 a.m., Evening Worship 7 p.m., Wednesday Fellowship 7 p.m.

**HOPEWELL CONGREGATIONAL METHODIST**  
Rev. Don Hester, pastor. Sunday School 9:45 a.m., Morning Worship 11 a.m., Evening Worship 7 p.m., Wednesday Fellowship 7 p.m. Rev. Don Hester, pastor. Sunday School 9:45 a.m., Morning Worship 11 a.m., Evening Worship 7 p.m., Wednesday Fellowship 7 p.m.

**SPURGEON UNITED METHODIST CHURCH**  
Rev. Rick Sitton, pastor. Sunday School 9:45 a.m., Morning Worship 11 a.m., Evening Worship 7 p.m., Wednesday Fellowship 7 p.m. Rev. Rick Sitton, pastor. Sunday School 9:45 a.m., Morning Worship 11 a.m., Evening Worship 7 p.m., Wednesday Fellowship 7 p.m.

**WARREN UNITED METHODIST CHURCH**  
Rev. Rick Sitton, pastor. Sunday School 9:45 a.m., Morning Worship 11 a.m., Evening Worship 7 p.m., Wednesday Fellowship 7 p.m. Rev. Rick Sitton, pastor. Sunday School 9:45 a.m., Morning Worship 11 a.m., Evening Worship 7 p.m., Wednesday Fellowship 7 p.m.

**WOODVILLE UNITED METHODIST CHURCH**  
Rev. Rick Sitton, pastor. Sunday School 9:45 a.m., Morning Worship 11 a.m., Evening Worship 7 p.m., Wednesday Fellowship 7 p.m. Rev. Rick Sitton, pastor. Sunday School 9:45 a.m., Morning Worship 11 a.m., Evening Worship 7 p.m., Wednesday Fellowship 7 p.m.

**LATTER DAY SAINTS**  
Rev. Rick Sitton, pastor. Sunday School 9:45 a.m., Morning Worship 11 a.m., Evening Worship 7 p.m., Wednesday Fellowship 7 p.m. Rev. Rick Sitton, pastor. Sunday School 9:45 a.m., Morning Worship 11 a.m., Evening Worship 7 p.m., Wednesday Fellowship 7 p.m.

**CHURCH OF JESUS CHRIST OF LATTER DAY SAINTS**  
Rev. Rick Sitton, pastor. Sunday School 9:45 a.m., Morning Worship 11 a.m., Evening Worship 7 p.m., Wednesday Fellowship 7 p.m. Rev. Rick Sitton, pastor. Sunday School 9:45 a.m., Morning Worship 11 a.m., Evening Worship 7 p.m., Wednesday Fellowship 7 p.m.

**CHURCH OF CHRIST**  
Rev. Rick Sitton, pastor. Sunday School 9:45 a.m., Morning Worship 11 a.m., Evening Worship 7 p.m., Wednesday Fellowship 7 p.m. Rev. Rick Sitton, pastor. Sunday School 9:45 a.m., Morning Worship 11 a.m., Evening Worship 7 p.m., Wednesday Fellowship 7 p.m.

**CHURCH OF CHRIST**  
Rev. Rick Sitton, pastor. Sunday School 9:45 a.m., Morning Worship 11 a.m., Evening Worship 7 p.m., Wednesday Fellowship 7 p.m. Rev. Rick Sitton, pastor. Sunday School 9:45 a.m., Morning Worship 11 a.m., Evening Worship 7 p.m., Wednesday Fellowship 7 p.m.

**CHURCH OF CHRIST**  
Rev. Rick Sitton, pastor. Sunday School 9:45 a.m., Morning Worship 11 a.m., Evening Worship 7 p.m., Wednesday Fellowship 7 p.m. Rev. Rick Sitton, pastor. Sunday School 9:45 a.m., Morning Worship 11 a.m., Evening Worship 7 p.m., Wednesday Fellowship 7 p.m.

**CHURCH OF CHRIST**  
Rev. Rick Sitton, pastor. Sunday School 9:45 a.m., Morning Worship 11 a.m., Evening Worship 7 p.m., Wednesday Fellowship 7 p.m. Rev. Rick Sitton, pastor. Sunday School 9:45 a.m., Morning Worship 11 a.m., Evening Worship 7 p.m., Wednesday Fellowship 7 p.m.

**CHURCH OF CHRIST**  
Rev. Rick Sitton, pastor. Sunday School 9:45 a.m., Morning Worship 11 a.m., Evening Worship 7 p.m., Wednesday Fellowship 7 p.m. Rev. Rick Sitton, pastor. Sunday School 9:45 a.m., Morning Worship 11 a.m., Evening Worship 7 p.m., Wednesday Fellowship 7 p.m.

**CHURCH OF CHRIST**  
Rev. Rick Sitton, pastor. Sunday School 9:45 a.m., Morning Worship 11 a.m., Evening Worship 7 p.m., Wednesday Fellowship 7 p.m. Rev. Rick Sitton, pastor. Sunday School 9:45 a.m., Morning Worship 11 a.m., Evening Worship 7 p.m., Wednesday Fellowship 7 p.m.

**CHURCH OF CHRIST**  
Rev. Rick Sitton, pastor. Sunday School 9:45 a.m., Morning Worship 11 a.m., Evening Worship 7 p.m., Wednesday Fellowship 7 p.m. Rev. Rick Sitton, pastor. Sunday School 9:45 a.m., Morning Worship 11 a.m., Evening Worship 7 p.m., Wednesday Fellowship 7 p.m.

**CHURCH OF CHRIST**  
Rev. Rick Sitton, pastor. Sunday School 9:45 a.m., Morning Worship 11 a.m., Evening Worship 7 p.m., Wednesday Fellowship 7 p.m. Rev. Rick Sitton, pastor. Sunday School 9:45 a.m., Morning Worship 11 a.m., Evening Worship 7 p.m., Wednesday Fellowship 7 p.m.

**CHURCH OF CHRIST**  
Rev. Rick Sitton, pastor. Sunday School 9:45 a.m., Morning Worship 11 a.m., Evening Worship 7 p.m., Wednesday Fellowship 7 p.m. Rev. Rick Sitton, pastor. Sunday School 9:45 a.m., Morning Worship 11 a.m., Evening Worship 7 p.m., Wednesday Fellowship 7 p.m.

**CHURCH OF CHRIST**  
Rev. Rick Sitton, pastor. Sunday School 9:45 a.m., Morning Worship 11 a.m., Evening Worship 7 p.m., Wednesday Fellowship 7 p.m. Rev. Rick Sitton, pastor. Sunday School 9:45 a.m., Morning Worship 11 a.m., Evening Worship 7 p.m., Wednesday Fellowship 7 p.m.

**CHURCH OF CHRIST**  
Rev. Rick Sitton, pastor. Sunday School 9:45 a.m., Morning Worship 11 a.m., Evening Worship 7 p.m., Wednesday Fellowship 7 p.m. Rev. Rick Sitton, pastor. Sunday School 9:45 a.m., Morning Worship 11 a.m., Evening Worship 7 p.m., Wednesday Fellowship 7 p.m.

**CHURCH OF CHRIST**  
Rev. Rick Sitton, pastor. Sunday School 9:45 a.m., Morning Worship 11 a.m., Evening Worship 7 p.m., Wednesday Fellowship 7 p.m. Rev. Rick Sitton, pastor. Sunday School 9:45 a.m., Morning Worship 11 a.m., Evening Worship 7 p.m., Wednesday Fellowship 7 p.m.

**CHURCH OF CHRIST**  
Rev. Rick Sitton, pastor. Sunday School 9:45 a.m., Morning Worship 11 a.m., Evening Worship 7 p.m., Wednesday Fellowship 7 p.m. Rev. Rick Sitton, pastor. Sunday School 9:45 a.m., Morning Worship 11 a.m., Evening Worship 7 p.m., Wednesday Fellowship 7 p.m.

**CHURCH OF CHRIST**  
Rev. Rick Sitton, pastor. Sunday School 9:45 a.m., Morning Worship 11 a.m., Evening Worship 7 p.m., Wednesday Fellowship 7 p.m. Rev. Rick Sitton, pastor. Sunday School 9:45 a.m., Morning Worship 11 a.m., Evening Worship 7 p.m., Wednesday Fellowship 7 p.m.

**CHURCH OF CHRIST**  
Rev. Rick Sitton, pastor. Sunday School 9:45 a.m., Morning Worship 11 a.m., Evening Worship 7 p.m., Wednesday Fellowship 7 p.m. Rev. Rick Sitton, pastor. Sunday School 9:45 a.m., Morning Worship 11 a.m., Evening Worship 7 p.m., Wednesday Fellowship 7 p.m.

**CHURCH OF CHRIST**  
Rev. Rick Sitton, pastor. Sunday School 9:45 a.m., Morning Worship 11 a.m., Evening Worship 7 p.m., Wednesday Fellowship 7 p.m. Rev. Rick Sitton, pastor. Sunday School 9:45 a.m., Morning Worship 11 a.m., Evening Worship 7 p.m., Wednesday Fellowship 7 p.m.

**CHURCH OF CHRIST**  
Rev. Rick Sitton, pastor. Sunday School 9:45 a.m., Morning Worship 11 a.m., Evening Worship 7 p.m., Wednesday Fellowship 7 p.m. Rev. Rick Sitton, pastor. Sunday School 9:45 a.m., Morning Worship 11 a.m., Evening Worship 7 p.m., Wednesday Fellowship 7 p.m.

**CHURCH OF CHRIST**  
Rev. Rick Sitton, pastor. Sunday School 9:45 a.m., Morning Worship 11 a.m., Evening Worship 7 p.m., Wednesday Fellowship 7 p.m. Rev. Rick Sitton, pastor. Sunday School 9:45 a.m., Morning Worship 11 a.m., Evening Worship 7 p.m., Wednesday Fellowship 7 p.m.

**CHURCH OF CHRIST**  
Rev. Rick Sitton, pastor. Sunday School 9:45 a.m., Morning Worship 11 a.m., Evening Worship 7 p.m., Wednesday Fellowship 7 p.m. Rev. Rick Sitton, pastor. Sunday School 9:45 a.m., Morning Worship 11 a.m., Evening Worship 7 p.m., Wednesday Fellowship 7 p.m.

**CHURCH OF CHRIST**  
Rev. Rick Sitton, pastor. Sunday School 9:45 a.m., Morning Worship 11 a.m., Evening Worship 7 p.m., Wednesday Fellowship 7 p.m. Rev. Rick Sitton, pastor. Sunday School 9:45 a.m., Morning Worship 11 a.m., Evening Worship 7 p.m., Wednesday Fellowship 7 p.m.

**CHURCH OF CHRIST**  
Rev. Rick Sitton, pastor. Sunday School 9:45 a.m., Morning Worship 11 a.m., Evening Worship 7 p.m., Wednesday Fellowship 7 p.m. Rev. Rick Sitton, pastor. Sunday School 9:45 a.m., Morning Worship 11 a.m., Evening Worship 7 p.m., Wednesday Fellowship 7 p.m.

**CHURCH OF CHRIST**  
Rev. Rick Sitton, pastor. Sunday School 9:45 a.m., Morning Worship 11 a.m., Evening Worship 7 p.m., Wednesday Fellowship 7 p.m. Rev. Rick Sitton, pastor. Sunday School 9:45 a.m., Morning Worship 11 a.m., Evening Worship 7 p.m., Wednesday Fellowship 7 p.m.

**CHURCH OF CHRIST**  
Rev. Rick Sitton, pastor. Sunday School 9:45 a.m., Morning Worship 11 a.m., Evening Worship 7 p.m., Wednesday Fellowship 7 p.m. Rev. Rick Sitton, pastor. Sunday School 9:45 a.m., Morning Worship 11 a.m., Evening Worship 7 p.m., Wednesday Fellowship 7 p.m.

**CHURCH OF CHRIST**  
Rev. Rick Sitton, pastor. Sunday School 9:45 a.m., Morning Worship 11 a.m., Evening Worship 7 p.m., Wednesday Fellowship 7 p.m. Rev. Rick Sitton, pastor. Sunday School 9:45 a.m., Morning Worship 11 a.m., Evening Worship 7 p.m., Wednesday Fellowship 7 p.m.

**CHURCH OF CHRIST**  
Rev. Rick Sitton, pastor. Sunday School 9:45 a.m., Morning Worship 11 a.m., Evening Worship 7 p.m., Wednesday Fellowship 7 p.m. Rev. Rick Sitton, pastor. Sunday School 9:45 a.m., Morning Worship 11 a.m., Evening Worship 7 p.m., Wednesday Fellowship 7 p.m.

**CHURCH OF CHRIST**  
Rev. Rick Sitton, pastor. Sunday School 9:45 a.m., Morning Worship 11 a.m., Evening Worship 7 p.m., Wednesday Fellowship 7 p.m. Rev. Rick Sitton, pastor. Sunday School 9:45 a.m., Morning Worship 11 a.m., Evening Worship 7 p.m., Wednesday Fellowship 7 p.m.

**CHURCH OF CHRIST**  
Rev. Rick Sitton, pastor. Sunday School 9:45 a.m., Morning Worship 11 a.m., Evening Worship 7 p.m., Wednesday Fellowship 7 p.m. Rev. Rick Sitton, pastor. Sunday School 9:45 a.m., Morning Worship 11 a.m., Evening Worship 7 p.m., Wednesday Fellowship 7 p.m.

**CHURCH OF CHRIST**  
Rev. Rick Sitton, pastor. Sunday School 9:45 a.m., Morning Worship 11 a.m., Evening Worship 7 p.m., Wednesday Fellowship 7 p.m. Rev. Rick Sitton, pastor. Sunday School 9:45 a.m., Morning Worship 11 a.m., Evening Worship 7 p.m., Wednesday Fellowship 7 p.m.

**CHURCH OF CHRIST**  
Rev. Rick Sitton, pastor. Sunday School 9:45 a.m., Morning Worship 11 a.m., Evening Worship 7 p.m., Wednesday Fellowship 7 p.m. Rev. Rick Sitton, pastor. Sunday School 9:45 a.m., Morning Worship 11 a.m., Evening Worship 7 p.m., Wednesday Fellowship 7 p.m.

**CHURCH OF CHRIST**  
Rev. Rick Sitton, pastor. Sunday School 9:45 a.m., Morning Worship 11 a.m., Evening Worship 7 p.m., Wednesday Fellowship 7 p.m. Rev. Rick Sitton, pastor. Sunday School 9:45 a.m., Morning Worship 11 a.m., Evening Worship 7 p.m., Wednesday Fellowship 7 p.m.

**CHURCH OF CHRIST**  
Rev. Rick Sitton, pastor. Sunday School 9:45 a.m., Morning Worship 11 a.m., Evening Worship 7 p.m., Wednesday Fellowship 7 p.m. Rev. Rick Sitton, pastor. Sunday School 9:45 a.m., Morning Worship 11 a.m., Evening Worship 7 p.m., Wednesday Fellowship 7 p.m.

**CHURCH OF CHRIST**  
Rev. Rick Sitton, pastor. Sunday School 9:45 a.m., Morning Worship 11 a.m., Evening Worship 7 p.m., Wednesday Fellowship 7 p.m. Rev. Rick Sitton, pastor. Sunday School 9:45 a.m., Morning Worship 11 a.m., Evening Worship 7 p.m., Wednesday Fellowship 7 p.m.

**CHURCH OF CHRIST**  
Rev. Rick Sitton, pastor. Sunday School 9:45 a.m., Morning Worship 11 a.m., Evening Worship 7 p.m., Wednesday Fellowship 7 p.m. Rev. Rick Sitton, pastor. Sunday School 9:45 a.m., Morning Worship 11 a.m., Evening Worship 7 p.m., Wednesday Fellowship 7 p.m.

**CHURCH OF CHRIST**  
Rev. Rick Sitton, pastor. Sunday School 9:45 a.m., Morning Worship 11 a.m., Evening Worship 7 p.m., Wednesday Fellowship 7 p.m. Rev. Rick Sitton, pastor. Sunday School 9:45 a.m., Morning Worship 11 a.m., Evening Worship 7 p.m., Wednesday Fellowship 7 p.m.

**CHURCH OF CHRIST**  
Rev. Rick Sitton, pastor. Sunday School 9:45 a.m., Morning Worship 11 a.m., Evening Worship 7 p.m., Wednesday Fellowship 7 p.m. Rev. Rick Sitton, pastor. Sunday School 9:45 a.m., Morning Worship 11 a.m., Evening Worship 7 p.m., Wednesday Fellowship 7 p.m.

**CHURCH OF CHRIST**  
Rev. Rick Sitton, pastor. Sunday School 9:45 a.m., Morning Worship 11 a.m., Evening Worship 7 p.m., Wednesday Fellowship 7 p.m. Rev. Rick Sitton, pastor. Sunday School 9:45 a.m., Morning Worship 11 a.m., Evening Worship 7 p.m., Wednesday Fellowship 7 p.m.

**CHURCH OF CHRIST**  
Rev. Rick Sitton, pastor. Sunday School 9:45 a.m., Morning Worship 11 a.m., Evening Worship 7 p.m., Wednesday Fellowship 7 p.m. Rev. Rick Sitton, pastor. Sunday School 9:45 a.m., Morning Worship 11 a.m., Evening Worship 7 p.m., Wednesday Fellowship 7 p.m.

**CHURCH OF CHRIST**  
Rev. Rick Sitton, pastor. Sunday School 9:45 a.m., Morning Worship 11 a.m., Evening Worship 7 p.m., Wednesday Fellowship 7 p.m. Rev. Rick Sitton, pastor. Sunday School 9:45 a.m., Morning Worship 11 a.m., Evening Worship 7 p.m., Wednesday Fellowship 7 p.m.

**CHURCH OF CHRIST**  
Rev. Rick Sitton, pastor. Sunday School 9:45 a.m., Morning Worship 11 a.m., Evening Worship 7 p.m., Wednesday Fellowship 7 p.m. Rev. Rick Sitton, pastor. Sunday School 9:45 a.m., Morning Worship 11 a.m., Evening Worship 7 p.m., Wednesday Fellowship 7 p.m.

**CHURCH OF CHRIST**  
Rev. Rick Sitton, pastor. Sunday School 9:45 a.m., Morning Worship 11 a.m., Evening Worship 7 p.m., Wednesday Fellowship 7 p.m. Rev. Rick Sitton, pastor. Sunday School 9:45 a.m., Morning Worship 11 a.m., Evening Worship 7 p.m., Wednesday Fellowship 7 p.m.

**CHURCH OF CHRIST**  
Rev. Rick Sitton, pastor. Sunday School 9:45 a.m., Morning Worship 11 a.m., Evening Worship 7 p.m., Wednesday Fellowship 7 p.m. Rev. Rick Sitton, pastor. Sunday School 9:45 a.m., Morning Worship 11 a.m., Evening Worship 7 p.m., Wednesday Fellowship 7 p.m.

**CHURCH OF CHRIST**  
Rev. Rick Sitton, pastor. Sunday School 9:45 a.m., Morning Worship 11 a.m., Evening Worship 7 p.m., Wednesday Fellowship 7 p.m. Rev. Rick Sitton, pastor. Sunday School 9:45 a.m., Morning Worship 11 a.m., Evening Worship 7 p.m., Wednesday Fellowship 7 p.m.

**CHURCH OF CHRIST**  
Rev. Rick Sitton, pastor. Sunday School 9:45 a.m., Morning Worship 11 a.m., Evening Worship 7 p.m., Wednesday Fellowship 7 p.m. Rev. Rick Sitton, pastor. Sunday School 9:45 a.m., Morning Worship 11 a.m., Evening Worship 7 p.m., Wednesday Fellowship 7 p.m.

**CHURCH OF CHRIST**  
Rev. Rick Sitton, pastor. Sunday School 9:45 a.m., Morning Worship 11 a.m., Evening Worship 7 p.m., Wednesday Fellowship 7 p.m. Rev. Rick Sitton, pastor. Sunday School 9:45 a.m., Morning Worship 11 a.m., Evening Worship 7 p.m., Wednesday Fellowship 7 p.m.

**CHURCH OF CHRIST**  
Rev. Rick Sitton, pastor. Sunday School 9:45 a.m., Morning Worship 11 a.m., Evening Worship 7 p.m., Wednesday Fellowship 7 p.m. Rev. Rick Sitton, pastor. Sunday School 9:45 a.m., Morning Worship 11 a.m., Evening Worship 7 p.m., Wednesday Fellowship 7 p.m.

**CHURCH OF CHRIST**  
Rev. Rick Sitton, pastor. Sunday School 9:45 a.m., Morning Worship 11 a.m., Evening Worship 7 p.m., Wednesday Fellowship 7 p.m. Rev. Rick Sitton, pastor. Sunday School 9:45 a.m., Morning Worship 11 a.m., Evening Worship 7 p.m., Wednesday Fellowship 7 p.m.

**CHURCH OF CHRIST**  
Rev. Rick Sitton, pastor. Sunday School 9:45 a.m., Morning Worship 11 a.m., Evening Worship 7 p.m., Wednesday Fellowship 7 p.m. Rev. Rick Sitton, pastor. Sunday School 9:45 a.m., Morning Worship 11 a.m., Evening Worship 7 p.m., Wednesday Fellowship 7 p.m.

**CHURCH OF CHRIST**  
Rev. Rick Sitton, pastor. Sunday School 9:45 a.m., Morning Worship 11 a.m., Evening Worship 7 p.m., Wednesday Fellowship 7 p.m. Rev. Rick Sitton, pastor. Sunday School 9:45 a.m., Morning Worship 11 a.m., Evening Worship 7 p.m., Wednesday Fellowship 7 p.m.

**CHURCH OF CHRIST**  
Rev. Rick Sitton, pastor. Sunday School 9:45 a.m., Morning Worship 11 a.m., Evening Worship 7 p.m., Wednesday Fellowship 7 p.m. Rev. Rick Sitton, pastor. Sunday School 9:45 a.m., Morning Worship 11 a.m., Evening Worship 7 p.m., Wednesday Fellowship 7 p.m.

**CHURCH OF CHRIST**  
Rev. Rick Sitton, pastor. Sunday School 9:45 a.m., Morning Worship 11 a.m., Evening Worship 7 p.m., Wednesday Fellowship 7 p.m. Rev. Rick Sitton, pastor. Sunday School 9:45 a.m., Morning Worship 11 a.m., Evening Worship 7 p.m., Wednesday Fellowship 7 p.m.

**CHURCH OF CHRIST**  
Rev. Rick Sitton, pastor. Sunday School 9:45 a.m., Morning Worship 11 a.m., Evening Worship 7 p.m., Wednesday Fellowship 7 p.m. Rev. Rick Sitton, pastor. Sunday School 9:45 a.m., Morning Worship 11 a.m., Evening Worship 7 p.m., Wednesday Fellowship 7 p.m.

**CHURCH OF CHRIST**  
Rev. Rick Sitton, pastor. Sunday School 9:45 a.m., Morning Worship 11 a.m., Evening Worship 7 p.m., Wednesday Fellowship 7 p.m. Rev. Rick Sitton, pastor. Sunday School 9:45 a.m., Morning Worship 11 a.m., Evening Worship 7 p.m., Wednesday Fellowship 7 p.m.

**CHURCH OF CHRIST**  
Rev. Rick Sitton, pastor. Sunday School 9:45 a.m., Morning Worship 11 a.m., Evening Worship 7 p.m., Wednesday Fellowship 7 p.m. Rev. Rick Sitton, pastor. Sunday School 9:45 a.m., Morning Worship 11 a.m., Evening Worship 7 p.m., Wednesday Fellowship 7 p.m.

**CHURCH OF CHRIST**  
Rev. Rick Sitton, pastor. Sunday School 9:45 a.m., Morning Worship 11 a.m., Evening Worship 7 p.m., Wednesday Fellowship 7 p.m. Rev. Rick Sitton, pastor. Sunday School 9:45 a.m., Morning Worship 11 a.m., Evening Worship 7 p.m., Wednesday Fellowship 7 p.m.

**CHURCH OF CHRIST**  
Rev. Rick Sitton, pastor. Sunday School 9:45 a.m., Morning Worship 11 a.m., Evening Worship 7 p.m., Wednesday Fellowship 7 p.m. Rev. Rick Sitton, pastor. Sunday School 9:45 a.m., Morning Worship 11 a.m., Evening Worship 7 p.m., Wednesday Fellowship 7 p.m.

**CHURCH OF CHRIST**  
Rev. Rick Sitton, pastor. Sunday School 9:45 a.m., Morning Worship 11 a.m., Evening Worship 7 p.m., Wednesday Fellowship 7 p.m. Rev. Rick Sitton, pastor. Sunday School 9:45 a.m., Morning Worship 11 a.m., Evening Worship 7 p.m., Wednesday Fellowship 7 p.m.

**CHURCH OF CHRIST**  
Rev. Rick Sitton, pastor. Sunday School 9:45 a.m., Morning Worship 11 a.m., Evening Worship 7 p.m., Wednesday Fellowship 7 p.m. Rev. Rick Sitton, pastor. Sunday School 9:45 a.m., Morning Worship 11 a.m., Evening Worship 7 p.m., Wednesday Fellowship 7 p.m.

**CHURCH OF CHRIST**  
Rev. Rick Sitton, pastor. Sunday School 9:45 a.m., Morning Worship 11 a.m., Evening Worship 7 p.m., Wednesday Fellowship 7 p.m. Rev. Rick Sitton, pastor. Sunday School 9:45 a.m., Morning Worship 11 a.m., Evening Worship 7 p.m., Wednesday Fellowship 7 p.m.

**CHURCH OF CHRIST**  
Rev. Rick Sitton, pastor. Sunday School 9:45 a.m., Morning Worship 11 a.m., Evening Worship 7 p.m., Wednesday Fellowship 7 p.m. Rev. Rick Sitton, pastor. Sunday School 9:45 a.m., Morning Worship 11 a.m., Evening Worship 7 p.m., Wednesday Fellowship 7 p.m.

**CHURCH OF CHRIST**  
Rev. Rick Sitton, pastor. Sunday School 9:45 a.m., Morning Worship 11 a.m., Evening Worship 7 p.m., Wednesday Fellowship 7 p.m. Rev. Rick Sitton, pastor. Sunday School 9:45 a.m., Morning Worship 11 a.m., Evening Worship 7 p.m., Wednesday Fellowship 7 p.m.

**CHURCH OF CHRIST**  
Rev. Rick Sitton, pastor. Sunday School 9:45 a.m., Morning Worship 11 a.m., Evening Worship 7 p.m., Wednesday Fellowship 7 p.m. Rev. Rick Sitton, pastor. Sunday School 9:45 a.m., Morning Worship 11 a.m., Evening Worship 7 p.m., Wednesday Fellowship 7 p.m.

**CHURCH OF CHRIST**  
Rev. Rick Sitton, pastor. Sunday School 9:45 a.m., Morning Worship 11 a.m., Evening Worship 7 p.m., Wednesday Fellowship 7 p.m. Rev. Rick Sitton, pastor. Sunday School 9:45 a.m., Morning Worship 11 a.m., Evening Worship 7 p.m., Wednesday Fellowship 7 p.m.

**CHURCH OF CHRIST**  
Rev. Rick Sitton, pastor. Sunday School 9:45 a.m., Morning Worship 11 a.m., Evening Worship 7 p.m., Wednesday Fellowship 7 p.m. Rev. Rick Sitton, pastor. Sunday School 9:45 a.m., Morning Worship 11 a.m., Evening Worship 7 p.m., Wednesday Fellowship 7 p.m.

**CHURCH OF CHRIST**  
Rev. Rick Sitton, pastor. Sunday School 9:45 a.m., Morning Worship 11 a.m., Evening Worship 7 p.m., Wednesday Fellowship 7 p.m. Rev. Rick Sitton, pastor. Sunday School 9:45 a.m., Morning Worship 11 a.m., Evening Worship 7 p.m., Wednesday Fellowship 7 p.m.

**CHURCH OF CHRIST**  
Rev. Rick Sitton, pastor. Sunday School 9:45 a.m., Morning Worship 11 a.m., Evening Worship 7 p.m., Wednesday Fellowship 7 p.m. Rev. Rick Sitton, pastor. Sunday School 9:45 a.m., Morning Worship 11 a.m., Evening Worship 7 p.m., Wednesday Fellowship 7 p.m.

**CHURCH OF CHRIST**  
Rev. Rick Sitton, pastor. Sunday School 9:45 a.m., Morning Worship 11 a.m., Evening Worship 7 p.m., Wednesday Fellowship 7 p.m. Rev. Rick Sitton, pastor. Sunday School 9:45 a.m., Morning Worship 11 a.m., Evening Worship 7 p.m., Wednesday Fellowship 7 p.m.

**CHURCH OF CHRIST**  
Rev. Rick Sitton, pastor. Sunday School 9:45 a.m., Morning Worship 11 a.m., Evening Worship 7 p.m., Wednesday Fellowship 7 p.m. Rev. Rick Sitton, pastor. Sunday School 9:45 a.m., Morning Worship 11 a.m., Evening Worship 7 p.m., Wednesday Fellowship 7 p.m.

**CHURCH OF CHRIST**  
Rev. Rick Sitton, pastor. Sunday School 9:45 a.m., Morning Worship 11 a.m., Evening Worship 7 p.m., Wednesday Fellowship 7 p.m. Rev. Rick Sitton, pastor. Sunday School 9:45 a.m., Morning Worship 11 a.m., Evening Worship 7 p.m., Wednesday Fellowship 7 p.m.

**CHURCH OF CHRIST**  
Rev. Rick Sitton, pastor. Sunday School 9:45 a.m., Morning Worship 11 a.m., Evening Worship 7 p.m., Wednesday Fellowship 7 p.m. Rev. Rick Sitton, pastor. Sunday School 9:45 a.m., Morning Worship 11 a.m., Evening Worship 7 p.m., Wednesday Fellowship 7 p.m.

**CHURCH OF CHRIST**  
Rev. Rick Sitton, pastor. Sunday School 9:45 a.m., Morning Worship 11 a.m., Evening Worship 7 p.m., Wednesday Fellowship 7 p.m. Rev. Rick Sitton, pastor. Sunday School 9:45 a.m., Morning Worship 11 a.m., Evening Worship 7 p.m., Wednesday Fellowship 7 p.m.

**CHURCH OF CHRIST**  
Rev. Rick Sitton, pastor. Sunday School 9:45 a.m., Morning Worship 11 a.m., Evening Worship 7 p.m., Wednesday Fellowship 7 p.m. Rev. Rick Sitton, pastor. Sunday School 9:45 a.m., Morning Worship 11 a.m., Evening Worship 7 p.m., Wednesday Fellowship 7 p.m.

**CHURCH OF CHRIST**  
Rev. Rick Sitton, pastor. Sunday School 9:45 a.m., Morning Worship 11 a.m., Evening Worship 7 p.m., Wednesday Fellowship 7 p.m. Rev. Rick Sitton, pastor. Sunday School 9:45 a.m., Morning Worship 11 a.m., Evening Worship 7 p.m., Wednesday Fellowship 7 p.m.

**CHURCH OF CHRIST**  
Rev. Rick Sitton, pastor. Sunday School 9:45 a.m., Morning Worship 11 a.m., Evening Worship 7 p.m., Wednesday Fellowship 7 p.m. Rev. Rick Sitton, pastor. Sunday School 9:45 a.m., Morning Worship 11 a.m., Evening Worship 7 p.m., Wednesday Fellowship 7 p.m.

**CHURCH OF CHRIST**  
Rev. Rick Sitton, pastor. Sunday School 9:45 a.m., Morning Worship 11 a.m., Evening Worship 7 p.m., Wednesday Fellowship 7 p.m. Rev. Rick Sitton, pastor. Sunday School 9:45 a.m., Morning Worship 11 a.m., Evening Worship 7 p.m., Wednesday Fellowship 7 p.m.

**CHURCH OF CHRIST**  
Rev. Rick Sitton, pastor. Sunday School 9:45 a.m., Morning Worship 11 a.m., Evening Worship 7 p.m., Wednesday Fellowship 7 p.m. Rev. Rick Sitton, pastor. Sunday School 9:45 a.m., Morning Worship 11 a.m., Evening Worship 7 p.m., Wednesday Fellowship 7 p.m.

**CHURCH OF CHRIST**  
Rev. Rick Sitton, pastor. Sunday School 9:45 a.m., Morning Worship 11 a.m., Evening Worship 7 p.m., Wednesday Fellowship 7 p.m. Rev. Rick Sitton, pastor. Sunday School 9:45 a.m., Morning Worship 11 a.m., Evening Worship 7 p.m., Wednesday Fellowship 7 p.m.

**CHURCH OF CHRIST**  
Rev. Rick Sitton, pastor. Sunday School 9:45 a.m., Morning Worship 11 a.m., Evening Worship 7 p.m., Wednesday Fellowship 7 p.m. Rev. Rick Sitton, pastor. Sunday School 9:45 a.m., Morning Worship 11 a.m., Evening Worship 7 p.m., Wednesday Fellowship 7 p.m.

**CHURCH OF CHRIST**  
Rev. Rick Sitton, pastor. Sunday School 9:45 a.m., Morning Worship 11 a.m., Evening Worship 7 p.m., Wednesday Fellowship 7 p.m. Rev. Rick Sitton, pastor. Sunday School 9:45 a.m., Morning Worship 11 a.m., Evening Worship 7 p.m., Wednesday Fellowship 7 p.m.

**CHURCH OF CHRIST**  
Rev. Rick Sitton, pastor. Sunday School 9:45 a.m., Morning Worship 11 a.m., Evening Worship 7 p.m., Wednesday Fellowship 7 p.m. Rev. Rick Sitton, pastor. Sunday School 9:45 a.m., Morning Worship 11 a.m., Evening Worship 7 p.m., Wednesday Fellowship 7 p.m.

**CHURCH OF CHRIST**  
Rev. Rick Sitton, pastor. Sunday School 9:45 a.m., Morning Worship 11 a.m., Evening Worship 7 p.m., Wednesday Fellowship 7 p.m. Rev. Rick Sitton, pastor. Sunday School 9:45 a.m., Morning Worship 11 a.m., Evening Worship 7 p.m., Wednesday Fellowship 7 p.m.



**Ivanhoe lake home**  
\$110,000

1 bedroom, 3 bath  
contemporary  
high ceilings  
large glass  
fireplace-calling area  
Pella windows  
showplace kitchen  
locks, free plan  
-boat slip on Lake  
Charmaine  
only 2 years old  
many other features



FOR SALE BY OWNER-APPOINTMENT ONLY  
118 Sherwood Forest-Ivanhoe  
409-283-8177 (Day) 409-283-7310 (Nite)

**Cruise Composers**  
Travel Agency

201 N. MAGNOLIA  
(INSIDE WOODVILLE INN)  
MONDAY-FRIDAY  
10 A.M.-5 P.M.

ESCORTED MOTORCOACH TOUR  
\*\*\*\*\*  
BRANSON-BONANZA  
June 19-23, 1989  
Tour Includes:  
Shepherd Of The Hills Outdoor Drama  
Silver Dollar City  
American Folk Music Festival  
Five Music & Comedy Shows  
Waltzing Waters  
Tour Of Stonehill Winery  
Tour Of School Of The Ozarks  
Area Tour  
Lodging At Bentree Lodge On  
Beautiful Table Rock Lake  
Price: \$380 per person double occupancy  
\$365 per person triple occupancy  
\$482 per person single occupancy  
Price Includes All Attractions,  
Lodging, Motorcoach transportation,  
Tour Guide, One Breakfast  
And Four Dinners.  
PAYMENT IN FULL DUE  
WITH RESERVATION  
Pacific Northwest-Canada Tour  
July 16-23  
Highlights: Yellowstone, Grand Teton  
and Glacier National Parks, Seattle,  
Vancouver, Victoria, Butchart Gardens,  
Olympic National Park.  
Price: \$1117 Double  
\$1136 Double  
\$1435 Single  
For More Information, Please Call:  
283-7741

**COUNTRY  
&  
WESTERN  
CLASSES**  
4 Week Session  
Begins Next Week

- \*TEXAS TWO-STEP
- \*COWBOY TWO-STEP
- \*WESTERN WALTZ
- \*POLKA
- \*SCHOTTISCHE
- \*COTTON-EYED JOE
- \*THE SWING
- \*FOUR CORNERS

For More Information Call:  
283-2164

**La Linda Dance Studio**  
610 N. Beech St.  
Woodville

## WPS Group To Meet

The Tyler County Wild-  
owed Persons Service  
(WPS) will meet for their  
Dutch-treat breakfast Sat-  
urday at 8 a.m. at the  
Woodville Inn. Their get-  
together on the first and  
third Saturdays of each  
month is a time they look  
forward to. If you are wid-  
owed, or if you are just  
interested in being with  
this group, you are wel-  
come to come and enjoy  
the time with them.

## This Father's Day Say it with Dayspring Greeting Cards

There's something special about  
Dayspring Greeting Cards for  
Father's Day. It's more than their  
creative designs and high quality.  
It goes deeper—to the senti-  
ments they contain; some are fun,  
some cute, and others serious.  
But all are warm, loving expres-  
sions of what you want to say to  
those who mean so much.  
Find out why so many people feel  
good about signing their name to a  
Dayspring Greeting Card.

**Dayspring**  
CARDS  
"When You Want to Share  
Your Heart and God's Love"

**The  
Promised Land  
Christian Book Store**  
106 S. Charlton  
Woodville  
(Inside Dogwood Antiques)  
283-7842

### Public Notice

**PUBLIC NOTICE**—The  
U.S. Department of Agri-  
culture, Agricultural Stabil-  
ization and Conservation  
Service's (ASCS) Tyler  
County Office presently  
occupies 1,724 square feet  
of office space at 411  
North Pine in Woodville.  
ASCS is interested in sig-  
naling a successful lease for  
this space, but it will con-  
sider relocation if eco-  
nomically advantageous.  
ASCS Occupancy is re-  
quired by September 1,  
1989. Anyone interested  
should call 409/283-2244  
at Woodville for more in-  
formation. (34-1-TC)

### Public Notice

**IN VITATION FOR BID**—  
Sealed bids in one copy for  
the work described herein  
will be received until 4  
P.M. on the 26th day of  
JUNE 1989, at the Tribal  
Council Meeting Room in  
the Administration Build-  
ing in the Indian Village,  
and at that time, publicly  
opened. The right is reserved by the  
Owner to accept or reject any or all bids.  
Contract documents in-  
cluding the work write-up  
and bid forms are on file at  
the Alabama-Coushatta  
Indian Reservation; Route  
3, Box 640, Livingston,  
Texas 77351, or the Deep  
East Texas Council of  
Governments, 274 East  
Lamar Street, Jasper,  
Texas 75951.  
Copies of the Contract  
Documents may be ob-  
tained by depositing \$100  
with the Alabama-Coushatta  
Indian Reservation for each set of docu-  
ments so obtained. Each  
such deposit will be re-  
funded if the Contract  
Documents are retained in  
good condition within 10  
days after bid opening.  
A certified check or bank  
draft, payable to the order  
of Alabama-Coushatta  
Indian Reservation, re-  
sponding to the contract  
bonds (at par value), or a  
satisfactory Bid Bond ex-  
ecuted by the Bidder and an  
acceptable surety, in an  
amount equal to five per-  
cent (5%) of the total Bid  
shall be submitted with  
each Bid. (33-3-TC)

Page 6A TELL EM YOU SAW IT IN THE TYLER COUNTY BOOSTER THURSDAY, JUNE 15, 1989



# "Come Worship With Us" Hillister Assembly Of God Church

**Hillister, Texas**  
P.O. Box 437 Hillister, Tx 77624 Call 283-2725

## "Where Good Things Happen!"



"Peace I leave with you, My peace I give unto you:  
Not as the world giveth, give I unto you. Let not  
your  
heart be troubled, neither let it be afraid."  
-- John 14:27

## BUICK BLOWOUT!

WE BEAT OUT OF TOWN PRICES!

**SAVING**

**4 TO CHOOSE FROM**

**REBATES UP TO \$1,500**

**SAVE NOW!**

**ESABRE** #1462 \$11,900 W/REBATE

**SKYLARK** #1367 \$248.62 PER MONTH

**LOADED 3.3 V6 PORT FUEL INJECTED #1440**

\*With Approved GMAC Credit: \$1500 Down Plus T.Y.T. 60 Months: 9.9% APR

**A&M MOTOR CO., INC.**  
605 S. MAGNOLIA WOODVILLE 283-2534  
PONTIAC-BUICK-OLDSMOBILE-GMC TRUCKS

## Little League Results

Twins 14, Dodgers 6  
The Twins scored one in the first, 3 in the 2nd, 2 in the 4th and 8 in the sixth. The Dodgers scored one in the first, 3 in the 2nd, 2 in the 4th and 8 in the sixth.

### Major League

**Metals 3, Cardinals 0**  
The Mets scored one in the first, fourth and sixth innings. The Cardinals scored one in the first, 3 in the 2nd, 2 in the 4th and 8 in the sixth.

**Yanks 12, Indians 5**  
The Yanks scored 2 in the second, 5 in the third, 4 in the fifth and one in the sixth. The Indians scored 2 in the second, one in the third and one in the 6th.

**Metals 30, Dodgers 7**  
The Mets won the game with 10 runs in the first and 8 in the second. The Dodgers scored 3 in the second and four in the third.

**Metals 13, Tigers 3**  
The Mets scored 2 in the first, 9 in the third and two in the 4th. The Tigers scored one run in each of the first, third and fourth.

**Indians 19, Dodgers 4**  
The Indians scored six in the second and seven in the fifth for the easy victory.

**Metals 15, Indians 2**  
The Mets won it with 9 runs in the first inning.

**Tigers 18, Indians 8**  
The Tigers won it with six runs in the 4th and 7 in the fifth. The Indians scored 7 in the second and one in the 4th.

**Metals 8, Yanks 5**  
The Cards scored one in the second, 4 in the fourth and 3 in the sixth. The Yanks scored three in the first, one in the 4th and one in the 6th.

**Metals 9, Astros 1**  
The Cards scored two in the 3rd, 4 in the fourth, one in the 5th and two in the 6th. The Astros scored one in the third.

**Dodgers 14, Pirates 4**  
The Dodgers scored 2 in the first, 3 in the second, one in the 3rd and 6 in the fifth. The Pirates scored 2 in the first and two in the 5th.

**The Cards scored one in the first, 3 in the 2nd, 2 in the 4th and 8 in the sixth.**

### Senior League

**Angels 14, Dodgers 4**  
Angels scored 4 in the first, 5 in the second and 5 in the 4th. The Dodgers scored two in the first and one in the 3rd and 5th.

**Twins 10, Indians 6**  
Twins scored 3 in the first, 2 in the 2nd, 3 in the fifth and 2 in the 6th. The Indians scored one in the first, 1 in the second, three in the 3rd and one in the 4th.

**Twins 12, Cubs 6**  
The Twins scored 2 in the first, 4 in the 3rd, 2 in the 4th and one in the 5th and 6th. The Cubs scored one in the 4th and one in the 5th.

**Pirates 12, Cards 5**  
The Pirates scored 3 in the first, one in the 3rd, six in the 4th and 2 in the 5th. The Cards scored 2 in the first, one in the fifth and 2 in the 6th.

**Indians 18, Cards 7**  
Indians scored 4 in the first, 1 in the 2nd, two in the fifth and 6 in the 6th. The Cards scored one in the first and two in the 5th.

## The Tyler County Booster

# SPORTS

### Major League

**Metals 3, Cardinals 0**  
The Mets scored one in the first, fourth and sixth innings. The Cardinals scored one in the first, 3 in the 2nd, 2 in the 4th and 8 in the sixth.

**Yanks 12, Indians 5**  
The Yanks scored 2 in the second, 5 in the third, 4 in the fifth and one in the sixth. The Indians scored 2 in the second, one in the third and one in the 6th.

**Metals 30, Dodgers 7**  
The Mets won the game with 10 runs in the first and 8 in the second. The Dodgers scored 3 in the second and four in the third.

**Metals 13, Tigers 3**  
The Mets scored 2 in the first, 9 in the third and two in the 4th. The Tigers scored one run in each of the first, third and fourth.

**Indians 19, Dodgers 4**  
The Indians scored six in the second and seven in the fifth for the easy victory.

**Metals 15, Indians 2**  
The Mets won it with 9 runs in the first inning.

**Tigers 18, Indians 8**  
The Tigers won it with six runs in the 4th and 7 in the fifth. The Indians scored 7 in the second and one in the 4th.

**Metals 8, Yanks 5**  
The Cards scored one in the second, 4 in the fourth and 3 in the sixth. The Yanks scored three in the first, one in the 4th and one in the 6th.

**Metals 9, Astros 1**  
The Cards scored two in the 3rd, 4 in the fourth, one in the 5th and two in the 6th. The Astros scored one in the third.

**Dodgers 14, Pirates 4**  
The Dodgers scored 2 in the first, 3 in the second, one in the 3rd and 6 in the fifth. The Pirates scored 2 in the first and two in the 5th.

**The Cards scored one in the first, 3 in the 2nd, 2 in the 4th and 8 in the sixth.**

### Minor League

**May 11th-15th**  
**Angels 8, Pirates 4**  
The Angels scored 3 in the first, 3 in the second and 2 in the fifth. The Pirates scored one in the third and three in the fifth.

**May 11th-15th**  
**Angels 8, Pirates 4**  
The Angels scored 3 in the first, 3 in the second and 2 in the fifth. The Pirates scored one in the third and three in the fifth.

### T-Ball League

**May 22nd-30th**  
**Red Sox 21, Mets 8**  
A's 18, Astros 7  
Phillies 18, Dodgers 5  
Indians 13, Pirates 3  
Indians 14, A's 6  
Phillies 22, Orioles 13  
Mets 21, Dodgers 9  
Red Sox 16, Tigers 14  
Astros 22, Tigers 21  
Cards 27, Red Sox 6  
Astros 19, Pirates 5  
Dodgers 19, A's 16  
Mets 12, Phillies 11  
Phillies 26, Pirates 12  
June

### Education Fund Honors

**Teacher-Astronaut**  
Christa McAuliffe, the woman chosen as the first teacher to fly on a space shuttle mission, will be re-named as a true pioneer in the history of aeronautics. She boarded the Challenger to meet the challenge to leave a challenge to a challenge to schoolchildren. John, she said, and together let us bring light to darkness. Join me—in space and in the classroom—and together let us conquer ignorance.

Christa McAuliffe's life was a shining example to us all of the power and importance of education. She dreamed to touch the future. Many Americans are giving the fund today to honor someone who gave us so much, for a future full of Christa McAuliffe.

The National Education Association hopes the Christa McAuliffe American Education Fund will enable more teachers to live out their dreams—to touch the future. Many Americans are giving the fund today to honor someone who gave us so much, for a future full of Christa McAuliffe.

Christa McAuliffe's life was a shining example to us all of the power and importance of education. She dreamed to touch the future. Many Americans are giving the fund today to honor someone who gave us so much, for a future full of Christa McAuliffe.

Christa McAuliffe's life was a shining example to us all of the power and importance of education. She dreamed to touch the future. Many Americans are giving the fund today to honor someone who gave us so much, for a future full of Christa McAuliffe.

Christa McAuliffe's life was a shining example to us all of the power and importance of education. She dreamed to touch the future. Many Americans are giving the fund today to honor someone who gave us so much, for a future full of Christa McAuliffe.

Christa McAuliffe's life was a shining example to us all of the power and importance of education. She dreamed to touch the future. Many Americans are giving the fund today to honor someone who gave us so much, for a future full of Christa McAuliffe.

Christa McAuliffe's life was a shining example to us all of the power and importance of education. She dreamed to touch the future. Many Americans are giving the fund today to honor someone who gave us so much, for a future full of Christa McAuliffe.

Christa McAuliffe's life was a shining example to us all of the power and importance of education. She dreamed to touch the future. Many Americans are giving the fund today to honor someone who gave us so much, for a future full of Christa McAuliffe.

Christa McAuliffe's life was a shining example to us all of the power and importance of education. She dreamed to touch the future. Many Americans are giving the fund today to honor someone who gave us so much, for a future full of Christa McAuliffe.

Christa McAuliffe's life was a shining example to us all of the power and importance of education. She dreamed to touch the future. Many Americans are giving the fund today to honor someone who gave us so much, for a future full of Christa McAuliffe.

Christa McAuliffe's life was a shining example to us all of the power and importance of education. She dreamed to touch the future. Many Americans are giving the fund today to honor someone who gave us so much, for a future full of Christa McAuliffe.

Christa McAuliffe's life was a shining example to us all of the power and importance of education. She dreamed to touch the future. Many Americans are giving the fund today to honor someone who gave us so much, for a future full of Christa McAuliffe.

Christa McAuliffe's life was a shining example to us all of the power and importance of education. She dreamed to touch the future. Many Americans are giving the fund today to honor someone who gave us so much, for a future full of Christa McAuliffe.

Christa McAuliffe's life was a shining example to us all of the power and importance of education. She dreamed to touch the future. Many Americans are giving the fund today to honor someone who gave us so much, for a future full of Christa McAuliffe.

Christa McAuliffe's life was a shining example to us all of the power and importance of education. She dreamed to touch the future. Many Americans are giving the fund today to honor someone who gave us so much, for a future full of Christa McAuliffe.

Christa McAuliffe's life was a shining example to us all of the power and importance of education. She dreamed to touch the future. Many Americans are giving the fund today to honor someone who gave us so much, for a future full of Christa McAuliffe.

Christa McAuliffe's life was a shining example to us all of the power and importance of education. She dreamed to touch the future. Many Americans are giving the fund today to honor someone who gave us so much, for a future full of Christa McAuliffe.

Christa McAuliffe's life was a shining example to us all of the power and importance of education. She dreamed to touch the future. Many Americans are giving the fund today to honor someone who gave us so much, for a future full of Christa McAuliffe.

Christa McAuliffe's life was a shining example to us all of the power and importance of education. She dreamed to touch the future. Many Americans are giving the fund today to honor someone who gave us so much, for a future full of Christa McAuliffe.

Christa McAuliffe's life was a shining example to us all of the power and importance of education. She dreamed to touch the future. Many Americans are giving the fund today to honor someone who gave us so much, for a future full of Christa McAuliffe.

Christa McAuliffe's life was a shining example to us all of the power and importance of education. She dreamed to touch the future. Many Americans are giving the fund today to honor someone who gave us so much, for a future full of Christa McAuliffe.

Christa McAuliffe's life was a shining example to us all of the power and importance of education. She dreamed to touch the future. Many Americans are giving the fund today to honor someone who gave us so much, for a future full of Christa McAuliffe.

Christa McAuliffe's life was a shining example to us all of the power and importance of education. She dreamed to touch the future. Many Americans are giving the fund today to honor someone who gave us so much, for a future full of Christa McAuliffe.

Christa McAuliffe's life was a shining example to us all of the power and importance of education. She dreamed to touch the future. Many Americans are giving the fund today to honor someone who gave us so much, for a future full of Christa McAuliffe.

Christa McAuliffe's life was a shining example to us all of the power and importance of education. She dreamed to touch the future. Many Americans are giving the fund today to honor someone who gave us so much, for a future full of Christa McAuliffe.

Christa McAuliffe's life was a shining example to us all of the power and importance of education. She dreamed to touch the future. Many Americans are giving the fund today to honor someone who gave us so much, for a future full of Christa McAuliffe.

Christa McAuliffe's life was a shining example to us all of the power and importance of education. She dreamed to touch the future. Many Americans are giving the fund today to honor someone who gave us so much, for a future full of Christa McAuliffe.

Christa McAuliffe's life was a shining example to us all of the power and importance of education. She dreamed to touch the future. Many Americans are giving the fund today to honor someone who gave us so much, for a future full of Christa McAuliffe.

Christa McAuliffe's life was a shining example to us all of the power and importance of education. She dreamed to touch the future. Many Americans are giving the fund today to honor someone who gave us so much, for a future full of Christa McAuliffe.

Christa McAuliffe's life was a shining example to us all of the power and importance of education. She dreamed to touch the future. Many Americans are giving the fund today to honor someone who gave us so much, for a future full of Christa McAuliffe.

Christa McAuliffe's life was a shining example to us all of the power and importance of education. She dreamed to touch the future. Many Americans are giving the fund today to honor someone who gave us so much, for a future full of Christa McAuliffe.

Christa McAuliffe's life was a shining example to us all of the power and importance of education. She dreamed to touch the future. Many Americans are giving the fund today to honor someone who gave us so much, for a future full of Christa McAuliffe.

Christa McAuliffe's life was a shining example to us all of the power and importance of education. She dreamed to touch the future. Many Americans are giving the fund today to honor someone who gave us so much, for a future full of Christa McAuliffe.

Christa McAuliffe's life was a shining example to us all of the power and importance of education. She dreamed to touch the future. Many Americans are giving the fund today to honor someone who gave us so much, for a future full of Christa McAuliffe.

Christa McAuliffe's life was a shining example to us all of the power and importance of education. She dreamed to touch the future. Many Americans are giving the fund today to honor someone who gave us so much, for a future full of Christa McAuliffe.

Christa McAuliffe's life was a shining example to us all of the power and importance of education. She dreamed to touch the future. Many Americans are giving the fund today to honor someone who gave us so much, for a future full of Christa McAuliffe.

Christa McAuliffe's life was a shining example to us all of the power and importance of education. She dreamed to touch the future. Many Americans are giving the fund today to honor someone who gave us so much, for a future full of Christa McAuliffe.

Christa McAuliffe's life was a shining example to us all of the power and importance of education. She dreamed to touch the future. Many Americans are giving the fund today to honor someone who gave us so much, for a future full of Christa McAuliffe.

Christa McAuliffe's life was a shining example to us all of the power and importance of education. She dreamed to touch the future. Many Americans are giving the fund today to honor someone who gave us so much, for a future full of Christa McAuliffe.

Christa McAuliffe's life was a shining example to us all of the power and importance of education. She dreamed to touch the future. Many Americans are giving the fund today to honor someone who gave us so much, for a future full of Christa McAuliffe.

Christa McAuliffe's life was a shining example to us all of the power and importance of education. She dreamed to touch the future. Many Americans are giving the fund today to honor someone who gave us so much, for a future full of Christa McAuliffe.

Christa McAuliffe's life was a shining example to us all of the power and importance of education. She dreamed to touch the future. Many Americans are giving the fund today to honor someone who gave us so much, for a future full of Christa McAuliffe.

Christa McAuliffe's life was a shining example to us all of the power and importance of education. She dreamed to touch the future. Many Americans are giving the fund today to honor someone who gave us so much, for a future full of Christa McAuliffe.

Christa McAuliffe's life was a shining example to us all of the power and importance of education. She dreamed to touch the future. Many Americans are giving the fund today to honor someone who gave us so much, for a future full of Christa McAuliffe.

Christa McAuliffe's life was a shining example to us all of the power and importance of education. She dreamed to touch the future. Many Americans are giving the fund today to honor someone who gave us so much, for a future full of Christa McAuliffe.

Christa McAuliffe's life was a shining example to us all of the power and importance of education. She dreamed to touch the future. Many Americans are giving the fund today to honor someone who gave us so much, for a future full of Christa McAuliffe.

Christa McAuliffe's life was a shining example to us all of the power and importance of education. She dreamed to touch the future. Many Americans are giving the fund today to honor someone who gave us so much, for a future full of Christa McAuliffe.

Christa McAuliffe's life was a shining example to us all of the power and importance of education. She dreamed to touch the future. Many Americans are giving the fund today to honor someone who gave us so much, for a future full of Christa McAuliffe.

Christa McAuliffe's life was a shining example to us all of the power and importance of education. She dreamed to touch the future. Many Americans are giving the fund today to honor someone who gave us so much, for a future full of Christa McAuliffe.

Christa McAuliffe's life was a shining example to us all of the power and importance of education. She dreamed to touch the future. Many Americans are giving the fund today to honor someone who gave us so much, for a future full of Christa McAuliffe.

Christa McAuliffe's life was a shining example to us all of the power and importance of education. She dreamed to touch the future. Many Americans are giving the fund today to honor someone who gave us so much, for a future full of Christa McAuliffe.

Christa McAuliffe's life was a shining example to us all of the power and importance of education. She dreamed to touch the future. Many Americans are giving the fund today to honor someone who gave us so much, for a future full of Christa McAuliffe.

Christa McAuliffe's life was a shining example to us all of the power and importance of education. She dreamed to touch the future. Many Americans are giving the fund today to honor someone who gave us so much, for a future full of Christa McAuliffe.

Christa McAuliffe's life was a shining example to us all of the power and importance of education. She dreamed to touch the future. Many Americans are giving the fund today to honor someone who gave us so much, for a future full of Christa McAuliffe.

Christa McAuliffe's life was a shining example to us all of the power and importance of education. She dreamed to touch the future. Many Americans are giving the fund today to honor someone who gave us so much, for a future full of Christa McAuliffe.

Christa McAuliffe's life was a shining example to us all of the power and importance of education. She dreamed to touch the future. Many Americans are giving the fund today to honor someone who gave us so much, for a future full of Christa McAuliffe.

Christa McAuliffe's life was a shining example to us all of the power and importance of education. She dreamed to touch the future. Many Americans are giving the fund today to honor someone who gave us so much, for a future full of Christa McAuliffe.

Christa McAuliffe's life was a shining example to us all of the power and importance of education. She dreamed to touch the future. Many Americans are giving the fund today to honor someone who gave us so much, for a future full of Christa McAuliffe.

Christa McAuliffe's life was a shining example to us all of the power and importance of education. She dreamed to touch the future. Many Americans are giving the fund today to honor someone who gave us so much, for a future full of Christa McAuliffe.

Christa McAuliffe's life was a shining example to us all of the power and importance of education. She dreamed to touch the future. Many Americans are giving the fund today to honor someone who gave us so much, for a future full of Christa McAuliffe.

Christa McAuliffe's life was a shining example to us all of the power and importance of education. She dreamed to touch the future. Many Americans are giving the fund today to honor someone who gave us so much, for a future full of Christa McAuliffe.

Christa McAuliffe's life was a shining example to us all of the power and importance of education. She dreamed to touch the future. Many Americans are giving the fund today to honor someone who gave us so much, for a future full of Christa McAuliffe.

Christa McAuliffe's life was a shining example to us all of the power and importance of education. She dreamed to touch the future. Many Americans are giving the fund today to honor someone who gave us so much, for a future full of Christa McAuliffe.

Christa McAuliffe's life was a shining example to us all of the power and importance of education. She dreamed to touch the future. Many Americans are giving the fund today to honor someone who gave us so much, for a future full of Christa McAuliffe.

Christa McAuliffe's life was a shining example to us all of the power and importance of education. She dreamed to touch the future. Many Americans are giving the fund today to honor someone who gave us so much, for a future full of Christa McAuliffe.

Christa McAuliffe's life was a shining example to us all of the power and importance of education. She dreamed to touch the future. Many Americans are giving the fund today to honor someone who gave us so much, for a future full of Christa McAuliffe.

Christa McAuliffe's life was a shining example to us all of the power and importance of education. She dreamed to touch the future. Many Americans are giving the fund today to honor someone who gave us so much, for a future full of Christa McAuliffe.

Christa McAuliffe's life was a shining example to us all of the power and importance of education. She dreamed to touch the future. Many Americans are giving the fund today to honor someone who gave us so much, for a future full of Christa McAuliffe.

Christa McAuliffe's life was a shining example to us all of the power and importance of education. She dreamed to touch the future. Many Americans are giving the fund today to honor someone who gave us so much, for a future full of Christa McAuliffe.

Christa McAuliffe's life was a shining example to us all of the power and importance of education. She dreamed to touch the future. Many Americans are giving the fund today to honor someone who gave us so much, for a future full of Christa McAuliffe.

Christa McAuliffe's life was a shining example to us all of the power and importance of education. She dreamed to touch the future. Many Americans are giving the fund today to honor someone who gave us so much, for a future full of Christa McAuliffe.

Christa McAuliffe's life was a shining example to us all of the power and importance of education. She dreamed to touch the future. Many Americans are giving the fund today to honor someone who gave us so much, for a future full of Christa McAuliffe.







OPEN  
MON-SAT  
7 A.M. TIL 8 P.M.  
SUNDAY  
8 A.M. TIL 6 P.M.

# BOB'S Fairway Foods

GUARANTEED TO HAVE THE PRODUCT OR YOU GET A RAIN CHECK  
WE GUARANTEE FRESHNESS AND LOW PRICES

THE MAN OF THE HOUR

# FATHER



Ben Glivens,  
Meat  
Apprentice

BEEF  
**T-BONE  
STEAK**  
LB **\$3.49**

BEEF  
BONELESS  
**CHUCK  
ROAST**  
LB **\$1.39**

## It's A Boy!

Mr and Mrs Grady Walters, of Woodville, are proud to announce the birth of a son, Matthew Alan, born at 11:55 p.m. Friday, June 2, at Tyler County Hospital. The newborn weighed in at 8 lbs. 5 oz. and was 19.5 inches in length. The new arrival was greeted by brothers Grady, 11, and Richard, 2. Attending Physician was Dr. Paula Schullz. The father is the store manager of Bob's Fairway Foods in Woodville.

FRESH 3 LBS OR MORE  
**GROUND BEEF** LB **\$1.29**  
ARMOUR STAR  
**CAN HAM** 3 LBS **\$6.99**  
LOUIS RICH GROUND  
**TURKEY** LB **\$1.39**  
SALT  
**BACON** LB **\$1.19**  
DECKER  
**CORN DOGS** LB **\$1.59**  
DECKER CHICKEN FRIED  
**BEEF PATTIES** LB **\$1.39**  
OHSE ALL VARIETIES  
**LUNCH MEAT** 3 LB **\$3.99**

SLICED  
SLAB  
**BACON**  
LB **99¢**

FRESH  
**GROUND  
CHUCK**  
3 LBS OR MORE  
LB **\$1.69**

FRYER  
**DRUMSTIX**  
5 LB BAG  
**\$1.89**

DECKER  
MEAT  
**WEINERS**  
12 OZ  
**99¢**

BEEF  
BONELESS  
**CHUCK  
STEAK**  
LB **\$1.69**

BEEF  
**SPARE  
RIBS**  
LB **99¢**

SMOKED  
**HAM HOCKS** LB **99¢**  
FAMILY PKG BEEF TENDERIZED  
**GRAVY STEAK** LB **\$1.89**  
ARMOUR  
**CHICKEN NUGGETS** LB **\$2.79**  
OLD MILL  
**HOT LINKS** LB **\$1.29**  
ECKRICH BOLOGNA OR  
**SALAMI** LB **\$1.39**  
ECKRICH SMOKED REG OR BEEF  
**SAUSAGE** LB **\$1.89**

## DON'T MISS THESE FATHERS DAY SPECIALS

SHOWBOAT  
**PORK  
& BEANS**  
15 OZ CAN  
**3/\$1.00**  
SPAM  
**LUNCHEON MEAT**  
12 OZ CAN **\$1.59**

12 OZ CANS  
(2 - 12 PACKS)  
**PEPSI COLA**  
**\$4.99**  
MARYLAND CLUB  
**COFFEE (ALL GRINDS)**  
13 OZ CAN **\$2.29**

PARADE  
**CHARCOAL**  
20 LB BAG **\$2.99**  
PARADE  
**CHARCOAL STARTER**  
32 OZ **99¢**

LADY BORDEN'S  
**ICE  
CREAM**  
1/2 GAL CTN  
**2/\$5.00**  
KRAFT PARKAY  
**MARGARINE**  
1 LB CTN **59¢**

HEINZ BBQ  
**SAUCE**  
18 OZ BTL **79¢**  
DORITOS  
**TORTILLA CHIPS**  
7 OZ BAG **\$1.39**

## FRESH PRODUCE

FRESH CALIFORNIA  
**NECTARINES**  
LB **79¢**  
FRESH  
**MEDIUM OKRA** 2 LBS **\$1.00**  
MEDIUM GREEN  
**BELL PEPPERS** 4/\$1.00  
FRESH  
**GREEN ONIONS** 4/\$1.00

CALIFORNIA RED SEEDLESS  
**GRAPES**  
LB **99¢**  
FRESH CALIFORNIA  
**ASPARAGUS** LB **99¢**  
FRESH  
**EGGPLANT** LB **69¢**  
CELLO PACK  
**MUSHROOMS** 8 OZ PKG **99¢**

MINUTE MAID FROZEN  
**ORANGE  
JUICE**  
12 OZ **\$1.29**

BORDENS  
**FRUIT  
DRINK**  
GALLON  
CARTON **99¢**

283-7818

BOB'S  
**Fairway**  
HOME VIDEO

283-7818

RENT TO OWN  
PANASONIC REMOTE CONTROL  
**STEREO**  
**\$359.95** CASH  
\$25.00 DOWN \$13.00 WEEKLY

RENT TO OWN  
PANASONIC BAR CODE PROGRAMMING  
**VCR**  
**\$319.95** CASH  
\$25.00 DOWN \$12.00 WEEKLY  
3 FREE MOVIE RENTS  
WITH PURCHASE

RENT TO OWN  
PANASONIC REMOTE CONTROL  
**TELEVISION**  
**\$359.95** CASH  
\$25.00 DOWN \$13.00 WEEKLY

NEW  
RELEASES



## Jerry Tolbert Real Estate

Office 283-7221 Home 283-3318

**HOMES**  
HANDYMAN SPEC. 2-1/2 Frame, Kelley St. 17,500  
EXTRA NEAT 3Bd, 2Ba, Frs. New Carpet, Win-  
dow Units, Shop, Large Lot 35,000  
INVEST In 3-1 Frame W/Attached 1 Bd, 1 Ba  
Apartment near Hospital 35,000  
SPACIOUS 4 Br, 2 Ba, 2 Story, Att. Garage, FP,  
CH/A, 2 L.O.s, Exc. Neighborhood 59,500  
KELLEY 3Bd, 2Ba, Vinyl Siding, Storm Windows,  
FP, CH/A 59,500  
DEARWOOD Spacious 3Br, 2Ba Brick, Large  
Den, FT, Large Bedrooms, Corner Lot 69,000  
WHEAT Extra Large 4Bd, 2Ba Brick 2 Story  
Living Room, Den, Studio, Nice Details 75,000  
TIMBERLAND Beautiful 2Bd, 2Ba Brick, Mas-  
ter Suite, Formal Dining, FP, Energy Features,  
Extra Nice 84,500

**COUNTRY HOMES & LAND**  
IDEAL SETTING 19+ Acs. with Pond, Woods  
and Cleared, Creek, Charming Brick Home with  
Attached Guest House 79,500  
CHESTER Approx. 54 Acs. Improv. Hay Pasture,  
Ponds, Barns, Frame House 78,500  
COZY 2-1/2 Frame on 1.73 Ac. 28,000  
COLMESNEIL 17 Acs. Wooded 18,500  
10 to 100 Ac.-Vet. App., Lakes & Woods CALL  
COMMERCIAL LOTS CALL  
INVESTMENT PROPERTY-City Block W/5 Rent  
Houses-Owner Financing 65,000

The average 18-month-old little girl will be just about twice as tall and five times as heavy at the age of 18.

## O'CONNOR

283-3951

17 Acs. Red. \$14,000  
42 Acs. \$1000/Ac.  
2 hms, 2 hwy. \$29,000  
3/2 den, patio \$20's  
River 2/1 \$7,000  
2/1/1 furnish. \$9,995  
2Bd furnish. \$18,000  
2 L.O.s, camp \$17,000  
1 Bd \$12,000-\$15,000  
Nice home 6/10 \$20's  
3/2/1 \$36,000  
Retirmt Spec. \$25,600  
3 Bd. Redec. \$25,000  
2/2 Sunroom \$25,000  
Make Offer 13ac 2/1/1

In Virginia in 1819 excess  
in dress was discouraged  
by placing a wardrobe tax.

## COUNTRY LAND USA TEXAS VETS

12 Wooded Acres With  
2 Bedroom Shell Home  
CALL COLLECT  
ANYTIME  
713-468-8834

## Houses For Sale

**ASSUMABLE NOTE:** 3  
Bedroom 2 1/2 Bath, brick  
home in Woodville CH/A  
lots of built-in extras  
located on large lot on  
quiet cul-de-sac. Call 283-  
5546 or 283-5472 (34-2-  
TP)  
**FOR SALE:** Woodville, 3  
Br, 2 Ba, brick, CH/A  
carport, 10 x 12 storage  
bldg, small yard-low  
maintenance, assume  
10.75% fixed mortgage,  
\$55,000 283-5046 (34-3-  
TP)  
**FOR SALE:** 2 BR, 2 Ba,  
Mobile Home with storage  
bldg on 1 acre \$7,000  
Century 21 1-800-426-  
5641 (34-2-TC)  
**FOR SALE:** 4Bd, 2Ba, air  
cond., heat on 10 acres on  
Hwy 255 Price \$55,000  
Call 837-5741, 16-tn.

**FOR SALE:** 1300 sq. ft.  
home on 20.35 acres  
fenced, 2 wells, part clear  
part timber. Call 283-5515  
(34-2-TP)  
**FOR SALE:** 52' foot  
Mobile Home, Gas furnace,  
electric stove, 210 window  
unit, 2 BR furnished, to be  
moved-Colmesneil, TX.  
\$5,000 837-4426 (33-2-  
TP)  
**FOR SALE:** Lovely 3Bd,  
2Ba, brick home on 4 acres  
1 mile from town. CH/A  
fireplace, all extras, shop  
barn, reduced to \$85,000.  
Call for appt. 283-7720.  
52-tn-c.  
**OWNER FINANCE:** two  
bedroom, one bath home,  
central heat and air, dining  
room, den, fenced yard,  
storage building,  
Woodville, 283-5027 after  
6 p.m. 42-tn-c.  
**REDUCED:** prices drasti-  
cally reduced for inventory  
clearance. 3 and 4 bedroom  
homes in the following  
areas: Woodville, Warren,  
Livingston, 1/2 low down  
payment, 2) 60 days, call  
collect 713-593-1170, 42-  
tn-c.  
When furniture shopping,  
look for seat cushions that  
are durable and provide  
good support.

## Houses For Sale

**FOR RENT:** 3 BR, 2 Ba, Dbl  
Garage, All appliances Ca  
& H-Carpet & Drapes  
Ivanhoe 283-5423 (32-  
TFN)  
**FOR RENT:** 3 BR, 2  
Bath, Brick with C/A/H in  
city limits. Large living  
room, Dining room, \$350  
Mo. plus deposit. Call 283-  
2412 or 283-7704 Night.  
(33-2-TC)  
**FOR RENT:** Building,  
West Bluff, Commercial.  
For more information, call  
283-7331, 39-tn-c.  
**FOR RENT:** Apartments,  
one and two bedrooms  
available. 709 and 711 N.  
Beech, 15-tn.  
**FOR RENT:** Building on  
South Magnolia, formerly  
Katrina's Beauty Shop, Call  
283-7331, 47-tn.  
**HOUSE FOR RENT:** 3  
BR, 1 1/2 Ba, Brick with 2  
car garage, Air & Heat,  
fireplace, garden area  
\$300 Mo.-References  
required-lease option.  
283-7102 (34-2-TP)  
**HOUSE FOR RENT:** in  
Spurger, 3Bd, 2Ba, C/H/A,  
New carpet, mini blinds,  
1 acre, \$300 month,  
\$150 security deposit.  
283-7569, 51-tn.

## Public Notice

**BID NOTICE:** Warren IS  
D is soliciting bids on  
multi-user copiers and  
printers. The copiers  
shall be IBM PS/2 or  
equivalent. Specifications  
for computers and other  
devices required may be  
picked up at the business  
office between 8 a.m. and  
3:30 p.m. Monday thru  
Friday, or by calling 409-  
547-2242. Submitted bids  
will be considered at a  
meeting of the Board of  
Trustees on June 27, 1989,  
at 7 p.m. in the board meet-  
ing room of the Admini-  
stration Building.  
The right is reserved to re-  
ject any or all proposals or  
accept the proposal which  
is deemed by the Board of  
Trustees to be in the best  
interest of the school dis-  
trict. Roy B. Moore, Sec-  
retary, Board of Trustees,  
Warren Independent  
School District, Warren,  
Texas 77664 (34-2-TC)

## Real Estate

**FOR SALE:** 20+ acres  
land located on rolling hills  
with small lakes being built  
on some of this property-  
some financing available  
at low interest rate. Prop-  
erty located 1 mile out of  
Woodville on US 287, Call  
283-5982 (29-tn)  
**FOR SALE:** 4 acres off  
Hwy 255 one mile from  
Colmesneil, \$10,000. Call  
837-2938, 38-tn.  
**FOR SALE:** 17 acres of  
land 1 mile off 25 East of  
Colmesneil, \$20,000. 837-  
5741, 13-tn-c.

## For Rent

**RENT:** 3 BR, 2 Ba, Dbl  
Garage, All appliances Ca  
& H-Carpet & Drapes  
Ivanhoe 283-5423 (32-  
TFN)  
**FOR RENT:** 3 BR, 2  
Bath, Brick with C/A/H in  
city limits. Large living  
room, Dining room, \$350  
Mo. plus deposit. Call 283-  
2412 or 283-7704 Night.  
(33-2-TC)  
**FOR RENT:** Building,  
West Bluff, Commercial.  
For more information, call  
283-7331, 39-tn-c.  
**FOR RENT:** Apartments,  
one and two bedrooms  
available. 709 and 711 N.  
Beech, 15-tn.  
**FOR RENT:** Building on  
South Magnolia, formerly  
Katrina's Beauty Shop, Call  
283-7331, 47-tn.  
**HOUSE FOR RENT:** 3  
BR, 1 1/2 Ba, Brick with 2  
car garage, Air & Heat,  
fireplace, garden area  
\$300 Mo.-References  
required-lease option.  
283-7102 (34-2-TP)  
**HOUSE FOR RENT:** in  
Spurger, 3Bd, 2Ba, C/H/A,  
New carpet, mini blinds,  
1 acre, \$300 month,  
\$150 security deposit.  
283-7569, 51-tn.

## Public Notice

**BID NOTICE:** Warren IS  
D is soliciting bids on  
multi-user copiers and  
printers. The copiers  
shall be IBM PS/2 or  
equivalent. Specifications  
for computers and other  
devices required may be  
picked up at the business  
office between 8 a.m. and  
3:30 p.m. Monday thru  
Friday, or by calling 409-  
547-2242. Submitted bids  
will be considered at a  
meeting of the Board of  
Trustees on June 27, 1989,  
at 7 p.m. in the board meet-  
ing room of the Admini-  
stration Building.  
The right is reserved to re-  
ject any or all proposals or  
accept the proposal which  
is deemed by the Board of  
Trustees to be in the best  
interest of the school dis-  
trict. Roy B. Moore, Sec-  
retary, Board of Trustees,  
Warren Independent  
School District, Warren,  
Texas 77664 (34-2-TC)

## Jack Bunn Real Estate

5 R 10 Acs. Next to Gov. Rides TAKE \$199,000  
3 1/4 Acs. 2 Bd. Farm-NICE-HEAD ACES \$29,900  
1-7 Acs. cont. sub. home place Hwy 92 Damb \$49,900  
"I Need Listings!" 409-283-3595

## TRI-COUNTY REALTOR

283-3216

**BMT HWY S-Near 2Bd, 1 Ba, 1 Ac.**  
**CLOSE IN:** Approx. 10 Acres, Timber  
**OFFICE BUILDING:** Corn. Lot, Roomy  
**LIVEOAK & CHARTON:** Neat Home,  
Reasonable  
**PINE & McALISTER:** 3Bd, 2Ba, NEEB  
**TO SELL!**  
**BMT HWY S-3 Bldgs, 1 Ac.** Commercial  
**MARION DR-Near 3Bd, 2Ba-Ivanhoe**  
**EAST LIVEOAK:** Older Home  
**EAST 190:** Prison Entrance, 2 Acs.  
**WEST 190:** Approx. 1.75 Ac. Comm.  
**WARREN:** Approx. 5 Acs, M/H Hookup  
**VILLAGE MILLS:** On Going Business  
**OLD LIVINGSTON ROAD:** Approx. 26  
Acres-OWNER FINANCING  
**MANY MORE!**

## JACKIE BROWN REAL ESTATE

US 69 COLMESNEIL  
837-2973

US 287-lovely 4 bd brick, 2 1/2 ba., all extras 1.16 acs.  
Lake Amanda-Lovely retirement home, shop, guest  
house, covered pier, 2 lots, landscaped...  
Lake Amanda-Frog Pond, lot, furn. cabins \$20's-\$30's  
FM 3065 2 br frame, city utilities \$15,000  
FM 1745 Chester, near school, frame, nice lot  
Woodville, 2 Br Frame, Good Location \$24,000  
Colmesneil, Cty. Rd., Wooded, Cabin, 5 ac. \$26,000  
US 69 nice 3 Br, 1-1/2 Bd, City Util., fenced 1+Ac. \$40's  
US 69-2 Br Frame, Pond, Pasture, Barn 15 ac. \$47,500  
Colmesneil-3-2 Brick, carport, Storage 1.2 ac. \$48,000  
Near School-Like new 3 Br Brick, Id. scped, 5 ac. \$60's  
Colmesneil-Well kept frame, new roof 3 ac. Reduced  
FM 256W-3 br, brick, Game Rm. Satellite, 1 ac. \$60's  
FM 1014-Brick, all extras, Id. scped, 2 plus ac.  
Colmesneil-3 Br, 2 ba brick, shop, paved dr. 2 plus ac.  
Country Living-Log House, Barn, creek, pond \$7 ac  
US 69 N Remodeled brick, shop, well, lake 13 plus acs  
US 69 Auto repair shop, off. City water, 15 Acs. \$70's  
US 190-Store Bldg., House, 3 Acs. \$75,000  
US 190-Commercial Property, 5 Acs. \$85,000  
US 69-Warren, 2 Large Metal Bldg. 6 Acs.  
1.65 Acs. wooded, comm. water, lake area \$3,500  
3.9 Acs. Private, city water, near US 69 \$1,750 Ac.  
5 Acs. Near R256E, County Rd., Home Site \$13,500  
6 Acs. County Rd. Near R255, Comm. Water \$13,500  
8 Acs. FM 1745 Near School Cleared, City lts. \$20's  
14 plus Acs. County Rd., Wooded, Private. Reduced  
23 Acs. FM 256E, Pasture, Cabin, Fenced \$46,000  
25 Acs. County Rd., Wooded, Comm. Water \$1350 ac  
52 Acs. Recreation Area, Neches River \$1200 ac  
80 Acs. Near FM 1745, Good Timber \$900 ac  
84 Acs. Near R255, Neches River Frontage \$1400 ac  
108 Acs. County Rd., Access US 69N, Water \$950 ac

## EAST TEXAS LAND CO.

For Fast Fair Efficient Service  
Over 200 Listings To Choose From

**Sales-Management-Appraisals-Timber**  
L.B. "Butch" Herling Broker  
Bud Jones-Jerry Grimes  
2 1/2 Acs.-Close in, big trees, owner finance with low  
down, long term, Hurry!  
13 1/2 Acres, pasture & woods, 2 ac. lake \$2,250 per Ac.  
126 Acs. Timber-nice home, new out bldgs., creek  
fish pond, tractor & equip. Home all furnished, secluded  
6 1/2 Acs. part pasture, fenced \$2,000 per acre  
4.7 Acs. ext., nice woods \$1,250 Ac.  
32 Acres wooded-black top \$1,495 per ac.  
4.89 Acres-Colmesneil \$10,000  
14 ac. Colmesneil, woods, frontage \$19,000  
8 Acres-Wooded, black top rd., creek \$1395 per ac.  
15 ac. Wooded, Colmesneil \$1,250 ac.  
2-2 Frame on 10 Ac., outbldgs, garden, Co. Rd. \$60,900  
3 Br, 1 1/2 Ba, Modular Home, 15 ac. pasture  
Campground Community  
3 Br Frame on 30 Ac., Hwy Front, Ponds, pasture  
and woods, good buy at \$62,500  
3-2 Cedar on 6 1/2 acres, fenced, barn and more \$74,500  
4-2 BRICK-F.P. on 5.8 acres close to town \$68,500  
3-2 BRICK-2 car garage, 2/3 acre \$56,900  
2-1 on Kelly St. cheap at \$19,500  
1 BEDROOM Brick on 5 acres \$45,000  
3-2 BRICK on 58 acres, pasture \$137,000  
EXTRA LGE 3-2-2 Home on Kelly St, 1 Ac. \$46,500  
4Bd, 2 ba. on 6+ acres, blacktop \$45,000  
3-2 BRICK-garage, nice-10 wooded acs-\$75,000  
EXTRA NICE home on 5 1/4 Ac., all extras, shop  
pond, Hwy frontage, A steal at \$145,000  
3 BR Brick on 2 acres, close in \$75,000  
3 BD 1 1/2 bath large home on 1.9 acres, barn, fence  
FRAME HOUSE on 13 acres Hwy 69 \$32,500  
3-1-2 BRICK 2 story fireplace, lots of extras  
2 years old near town, some financing Only \$125,000  
3-2 BRICK 10 acres w/pond, barn, nice \$97,500  
3-2 Brick-CH/A Large 2 car garage 2 ac. \$59,500  
4Bd 2 Ba, Brick-2400 Ft. under roof 2 ac. \$45,000  
2-2-2 Near Town 1 Ac. All extras \$27,900  
Over 200 Properties to choose from  
Member Texas Society of Professional Land  
Management Appraisers  
409-283-5252

## PATTON REALTY

6 1/2 Miles South  
Of Woodville  
283-7487 283-8122  
Open Everyday  
Sat 9-5 Sun. 1-5

**DIRECTOR OF NURSES**  
RN or LVN Needed For Intermediate Care Facility  
Excellent Opportunity For Self-Motivating,  
Enthusiastic and Dedicated Nurse.  
Must Have A Caring Personality and be  
Committed To Quality Work and Professional growth.  
\*COMPETITIVE SALARY  
\*PLEASANT WORKING CONDITIONS  
\*EXCELLENT BENEFITS  
For Interview Appointment Contact:  
Anna Carpenter, Adm. (409) 327-5415  
Or Send Resume To:  
Burmont Nursing Center  
P.O. Box 750  
Livingston, Tex. 77351

**TEXAS VETS**  
2 Bedroom House  
10 Pretty Wooded Acres  
\$20,000  
CALL COLLECT  
713-468-8834

## BARGAIN of the Month



**PACKAGE  
DEAL**  
1320 FORD  
DIESEL TRACTOR  
• 200A FORD DISC  
• 951 FORD CUTTER  
• 781B FORD REAR BLADE  
• 400A ROW FORD CULTIVATOR  
**PLUS: 16' Trailer To Haul It Home!**  
**PACKAGE PRICE**  
**NOW ONLY \$10,300**

**WITH \$500 DOWN PAYMENT**  
8.9% APR for 48 Months W/Approved Credit  
3 Other Tractor Model Packages Also Available  
**SEE US FOR DETAILS!**  
**JASPER FORD TRACTOR**  
Hwy 190 West Jasper, Texas 75951  
PARTS-SERVICE-SALES  
384-4611 384-4612

the Sunflower Group MONEY SAVING COUPONS the Sunflower Group

## JOIN Club PEPPER

**FOR GREAT  
SUMMER FUN ITEMS**

See details of participating retailers or write to "Club Pepper",  
Dept. 3101, Lubbock, Texas 79491 for complete details on how  
to get your very own "Club Pepper".

- 10 oz. Mug
- Beach Chair
- 1-Short
- Cap
- Beach Towel
- 10-Speed Bike
- Sunglasses

*Just what the Dr. ordered!*

**SAVE 25¢**

Use your saved pennies on 10¢ Club Pepper Diet Soda or 3¢ Club  
Pepper Soda. See details of participating retailers or write to "Club Pepper",  
Dept. 3101, Lubbock, Texas 79491 for complete details on how to get your  
very own "Club Pepper".

See details of participating retailers or write to "Club Pepper",  
Dept. 3101, Lubbock, Texas 79491 for complete details on how to get your  
very own "Club Pepper".

44900 202018