

Wal-Mart Portrait Studio Now Two Packages! CHOOSE ONE PACKAGE I 32 Portraits \$4.88 PACKAGE II 81 Portraits \$12.88

Sale 1 Pair Soft Contact Lenses \$89.00 Dr. Gary E. Tatum Optometrist 103 N. Pecan, Woodville 283-3011

DQ Dairy Queen Treats & Eats Country Basket \$1.99 1009 S. Magnolia Woodville 283-2509

Voters to decide on agricultural financing

AUSTIN — Action by the Texas Legislature this general session will allow voters across the state on Nov. 2 to decide on increasing an agricultural finance program's funding authority from \$25 million to \$100 million.

Botanical illustrations exhibited in Lufkin

LUFKIN — Pines and Pines: Botanical Illustrations by LeAnn McCaffree is on exhibit at the Texas Forestry Museum in Lufkin through Sept. 26.

Call 283-2516 to place a classified ad!

MEETING THE PHYSICAL CHALLENGE...

Today's finished orthotic or prosthetic product bears little resemblance to the old appliances, which were heavier and rather unsightly, with hooks and exposed cables.

Subscribe Today To THE TYLER COUNTY BOOSTER WHERE THE NEWS AND ADS ARE HOT BUT THE SUBSCRIPTION PRICE IS COOL!

Aug. 25

WEDNESDAY August 25, 1993 Volume 65 Number 34 WOODVILLE, TEXAS USPS G45-560

THIS WEEK Wednesday, Aug. 25 Rotary District Governor Chester Burns of Galveston will make his official annual visit to the Woodville Rotary Club meeting during a noon meeting in the Woodville Inn.

WOODVILLE — Although quick to point out that discussion at Monday's budget workshop was a review of a possible option, Tyler County commissioners began to explore a tax increase to offset projected losses in revenue during 1994.

The Tyler County BOOSTER

Tax hike option eyed by county commissioners

By Greg Peak Editor WOODVILLE — Although quick to point out that discussion at Monday's budget workshop was a review of a possible option, Tyler County commissioners began to explore a tax increase to offset projected losses in revenue during 1994.

A Thursday Afternoon Scramble golf tournament will be held beginning at 5:30 p.m. at Dogwood Hills Country Club. Sign up deadline is 5 p.m.



By Don Stevenson AUSTIN — The Woodville High School baseball program has been put on probation for one year and all of '93 baseball games and '92 football games forfeited by the University Interscholastic Association (UIA).

Eagle baseball program put on probation by UIA

By Don Stevenson AUSTIN — The Woodville High School baseball program has been put on probation for one year and all of '93 baseball games and '92 football games forfeited by the University Interscholastic Association (UIA).

Sales tax income up by 44%

WOODVILLE — Tyler County's sales tax income continued to rebound during August with a 44.1 percent increase over the amount received one year earlier, according to a report issued by Tyler County Auditor Denny Worthington.

'Oil boom' projected

WOODVILLE — Referring to a coming "oil boom," Tyler County Clerk Donnee Gregory warned county commissioners Monday that conditions in her office could be extremely crowded in coming weeks.

SUMMER CLEARANCE! SPECIAL CHEST 4 DRAWERS \$49 BASSETT Slide-By-Side \$699 CORSIANA CRAZY QUILT Mattress Sale RECLINERS \$149 DAY BED WITH MATTRESS & TOP SPRING \$198

Piney Woods Warehouse Furniture & Appliances BUSINESS HWY. 68 NORTH 1207 N. WASHINGTON, LIVINGSTON, TEXAS 327-5719

Tyler County Effective Tax Rate

1993 Property Tax Rates in Tyler County

This notice concerns 1993 property tax rates for Tyler County. It presents information about three tax rates. Last year's tax rate is the actual rate that was levied on taxable property last year. This year's effective tax rate would be the same as last year's tax rate if you compare properties taxed in both years. This year's rollback tax rate is the highest tax rate the school district can set before it must hold a roll-back election. In each case these rates are found by dividing the total amount of taxes by the tax base (the total value of taxable property) with adjustments as required by state law. The rates are given per \$100 of property value.

	General Fund	Flood Control	All Fund
Last year's tax rates:			
Last year's operating taxes	\$ 1,366,539	\$ 297,777	\$ 1,664,316
Last year's debt taxes	\$ 0	\$ 0	\$ 0
Last year's total taxes	\$ 1,366,539	\$ 297,777	\$ 1,664,316
Last year's tax base	\$ 450,456,174	\$ 122,491,000	\$ 572,947,174
Last year's total tax rate	\$.31 / \$100	\$.24 / \$100	\$.29 / \$100
This year's effective tax rates:			
Last year's adjusted taxes (after subtracting taxes on lost property)	\$ 1,372,649	\$ 297,570	\$ 1,670,219
+ This year's adjusted tax base (after subtracting value of new property)	\$ 467,493,131	\$ 122,763,491	\$ 590,256,622
- This year's effective tax rate for each fund	\$.29 / \$100	\$.24 / \$100	\$.28 / \$100
Total effective tax rate	\$.29 / \$100	\$.24 / \$100	\$.28 / \$100

In the first year a county collects the additional sales tax for bonded property taxes, it must notify the following times unless its first adjustment was made last year:

- Sales tax adjustment rate: \$.05 / \$100
- Rollback tax rate: \$.5828 / \$100

x 1.05 - maximum rate unless until publishes notices and holds hearing: \$.5379 / \$100

This year's rollback tax rate:

Last year's adjusted operating taxes (after subtracting taxes on lost property and including taxes for state criminal justice funds)

- Last year's adjusted tax base
- This year's effective operating rate
- x 1.05 - this year's maximum operating rate
- This year's debt rate
- This year's rollback rate for each fund
- This year's total rollback rate

A county that collects the additional sales tax to reduce property taxes, including one that collects the tax for the first time this year, must insert the following rates:

- Sales tax adjustment rate: \$.05469 / \$100
- Rollback tax rate: \$.5628 / \$100



PLACER PERFORMANCE PLANNED - Local vocalist Robert Byars once again performs at the Holiday Pine Manor dance beginning at 7 p.m. Thursday, Aug. 16. The public is invited to attend the event.

Meetings/Events

Painting workshop rescheduled

WOODVILLE - The Pineywoods Art League of East Texas will present a painting workshop entitled "The Figure in Watercolor" Tuesday and Wednesday, Sept. 14 and 15 from 9 a.m. to 4 p.m. at 11 East Pine Art Gallery, located 3 miles north of Woodville on Hwy 69.

Rescheduled from a previous cancellation, the workshop will be taught by Don Letzau and the cost for the two days is \$60. Space is limited; to register or for more information call 394-8009.

Watercolor demonstration slated

WOODVILLE - The Pineywoods Art League of East Texas (PALET) will present a watercolor demonstration at their next meeting, at 8 p.m. Monday, Sept. 13 in the fellowship hall of the Pineywoods Methodist Church, 329 N. Dowek St. in Jasper.

For more information about PALET call 698-2121.

Hunter safety class planned

WOODVILLE - Hunting season is just a few short weeks away, and any new hunting or hunting in Texas is required to complete a Hunter Safety Education course.

Effective Sept. 1, all hunters who are at least 17 years of age and whose date of birth is on or after Sept. 2, 1971 must have successfully completed the course to hunt in Texas.

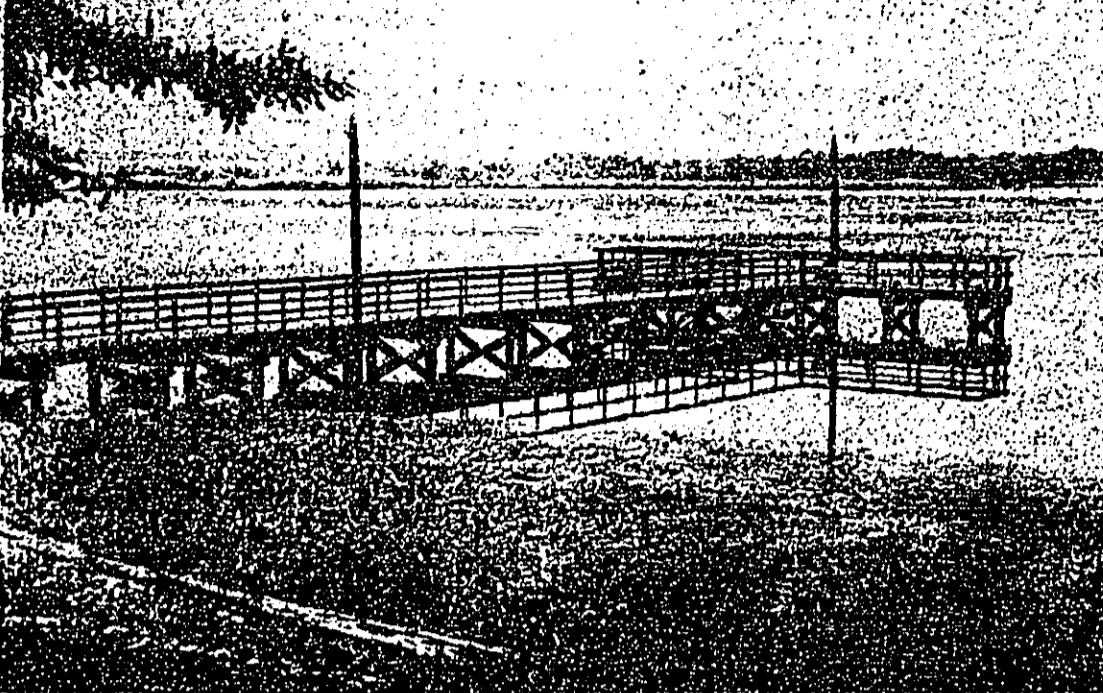
A Hunter Safety Education Class will be given at the Woodville High School Library beginning Monday, Sept. 13 and continuing through Tuesday, Sept. 16 from 6 p.m. to 9:30 p.m. There is an administrative fee of \$35 for the course.

For further information contact National Park Ranger Charles Blocker at 283-5224 or 283-7520 ext. 1. A fee of Texas Game Warden Mike Whelan.

Warren 4-H Club meets Sept. 14

WARREN - The Warren 4-H Club will meet at 7 p.m. Tuesday, Sept. 14 at the 4-H meeting house.

All members need to be present.



PLAN TO LOWER LAKE ADVANCES - In an effort to control the growth of aquatic plants that are choking much of B.A. Steinhagen Lake, the U.S. Army Corps of Engineers is working with various governmental entities to win approval of a plan to lower the lake level for six weeks. Local Texas Parks and Wildlife Department staff members already have given their approval and the agency's executive director is being contacted. In addition, the Corps is conducting environmental review of the Lower Neches Valley Authority (LNVA). If this plan were approved, the Corps would lower the lake level would be lowered from mid-December through January. Members of a group known as Dam B Constructors have been circulating a petition which, among other things, asks the Corps to postpone the problem of aquatic plant growth. Thus far, over 3,000 signatures have been obtained and the petition are still being circulated in Tyler, Jasper and other area counties. (Photo by GING PARK)

School Lunch Menu

Chester ISD

WEDNESDAY, Aug. 25: Chicken salad, grapes with dressing, later 10th apple sauce, cake and milk.

THURSDAY, Aug. 26: Barrios with salsa, whole kernel corn, garden salad, cheese and milk.

FRIDAY, Aug. 27: Hamburgers, lettuce, tomato, pickles, onions, curly fries, dressing and milk.

MONDAY, Aug. 30: Beef, nachos, pinto beans, rice, salad, full-fat milk.

TUESDAY, Aug. 31: Hotdog, potato salad, baked beans, cinnamon rolls and milk.

Spurger ISD

WEDNESDAY, Aug. 25: Ham and cheese, French fries, salad, pickles, brownies and milk.

THURSDAY, Aug. 26: Chicken spaghetti, corn salad, cobble, garlic bread and milk.

FRIDAY, Aug. 27: Barbecue burger, French fries, salad, pickles, cookies and milk.

MONDAY, Aug. 30: Mini-corn dogs, macaroni and cheese, tossed salad, brownies and milk.

TUESDAY, Aug. 31: Cilled chicken sandwich, lettuce, tomato, pickles, chips, fruit and milk.

Woodville ISD

WEDNESDAY, Aug. 25: Mini-sub sandwich, lettuce, tomato, pickles, French fries, cookies and milk.

THURSDAY, Aug. 26: Beef and cheddar, fluffy rice, English peas, trimy cookies, hot rolls and milk.

FRIDAY, Aug. 27: Steak, baked potatoes, lettuce, tomato, pickles, French fries, brownies and milk.

MONDAY, Aug. 30: Spaghetti, meat sauce, hot rolls, cinnamon rolls and milk.

TUESDAY, Aug. 31: Hotdog, french fries, potato salad, baked beans, cinnamon rolls, cookies and milk.

Warren ISD

WEDNESDAY, Aug. 25: Shrimp, French fries, pickles, onion, lettuce, corn, Jello and milk.

What's The Difference Between Louisiana-Pacific And Other Timber Buyers?

And just what is it that makes L-P better for your timberland?

Is it our assistance in developing management plans? Is it our consulting services? Is it our single tree selection for your bottom line? Our professional? Sure... others can offer you most of these services.

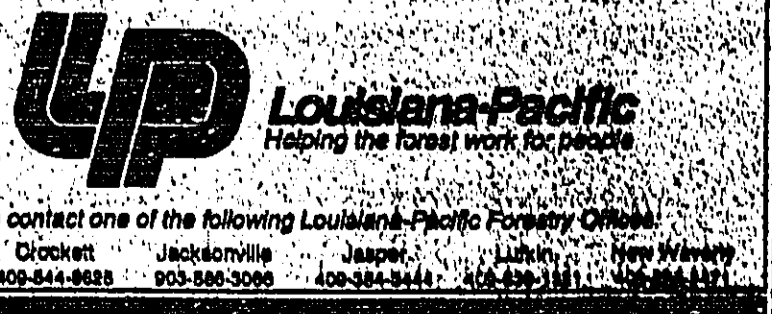
What's The Difference?

but the difference... really, is not so much what we do, but how we do it. Our business is based on people just like you. People trying to build a better life for themselves and their families. When money matters are at stake, it's only natural to turn to the tried and true. At L-P, we really can make the difference.

We want to be your forest adviser. We can write a management plan to fit your needs and dreams. We can assist in the management, marking and harvesting of your timber, and the replanting of your timberlands.

What does it cost you? Very little or nothing at all — depending on the services. For complete details contact Tres Enterprise professionals. We're ready to work for you.

Louisiana-Pacific. We know the tree business.



Call 283-2516 to place a classified ad!

Warren 4-H Club meets Sept. 14

WARREN - The Warren 4-H Club will meet at 7 p.m. Tuesday, Sept. 14 at the 4-H meeting house.

All members need to be present.

Sale

1 Pair Soft Contact Lenses \$89.00

Includes: Contact lenses, solution, contact case, contact glasses, contact case, contact glasses, contact case, contact glasses.

Dr. Gary E. Tatum

Optometrist

103 N. Pacer, Woodville 283-3011

NO COUPON REQUIRED

Warren ISD Effective Tax Rate

1993 Property Tax Rates in Warren ISD

This notice concerns 1993 property tax rates for Warren ISD. It presents information about three tax rates. Last year's tax rate is the actual rate the school district used to determine property taxes last year. This year's effective tax rate would impose the same total taxes as last year if you compare properties taxed in both years. This year's rollback tax rate is the highest tax rate the school district can set before it must hold a roll-back election. In each case these rates are found by dividing the total amount of taxes and state funds by the tax base (the total value of taxable property) with adjustments as required by state law. The rates are given per \$100 of property value.

Last year's tax rates:	
Last year's operating taxes	\$ 707,323.47
Last year's debt taxes	\$ 0
Last year's total taxes	\$ 707,323.47
Last year's tax base	\$ 249,228,261
Last year's total tax rate	\$.2827 / \$100
This year's effective tax rates:	
Last year's adjusted taxes (after subtracting taxes on lost property)	\$ 679,161.00
+ This year's adjusted tax base (after subtracting value of new property)	\$ 239,089,762
- This year's effective tax rate	\$.2828 / \$100
- x 1.05 - maximum rate unless the school district publishes notices and holds hearing	\$.5178 / \$100
This year's rollback tax rate:	
School maintenance and operations (including interest)	\$ 8,074,011
+ This year's tax base	\$ 239,089,762
+ This year's local maintenance and operating rate	\$ 1.5168 / \$100
+ 4.05 - this year's maximum operating rate	\$ 1.5788 / \$100
+ This year's debt rate	\$ 0 / \$100
- This year's rollback rate	\$ 1.5788 / \$100

Schedule A - Unencumbered Fund Balances

The following estimated balances will be left in the unit's property tax accounts at the end of the fiscal year. These balances are not encumbered by a corresponding debt obligation.

Type of Property Tax Fund	Balance
-	\$ 0

Schedule B - 1993 Debt Service

The unit plans to pay the following amounts for long-term debts that are secured by property taxes. These amounts will be paid from property tax revenues (or additional sales tax revenues, if applicable).

Description of Debt	Contract Payment to be Paid from Property Taxes	Interest to be Paid from Property Taxes	Other Amounts to be Paid	Total Payment
-	\$ 0	\$ 0	\$ 0	\$ 0
Total required for 1993 debt service	\$ 0	\$ 0	\$ 0	\$ 0
Amount of any paid from funds listed in Schedule A	\$ 0	\$ 0	\$ 0	\$ 0
Excess collections last year	\$ 0	\$ 0	\$ 0	\$ 0
Total to be paid from taxes in 1993	\$ 0	\$ 0	\$ 0	\$ 0
Amount added in anticipation that the unit will collect only 98% of its taxes in 1993	\$ 0	\$ 0	\$ 0	\$ 0
Total Debt Levy	\$ 0	\$ 0	\$ 0	\$ 0

Schedule C - Expected Revenue from Additional Sales Tax

(For hospital districts, cities and counties with additional sales tax to reduce property taxes) In calculating the effective and rollback tax rates, the unit estimated that it will receive \$ 0 in additional sales and use tax revenues.

Schedule D - State Criminal Justice Mandate (For Counties)

The County Auditor certifies that _____ County has spent \$ _____ in the previous 12 months beginning _____ for the maintenance and operations cost of keeping the courts open. The County Sheriff has provided information on this cost, minus the state revenues received for reimbursement of such cost.

Schedule E - Transfer of Department, Function or Activity

The _____ point _____ from _____ to _____ on _____ The _____ operates this function in all or a majority of the _____

This notice contains a summary of actual effective and rollback tax rate calculations. You can expect a copy of the full calculations in the Tyler County Appraisal District's 1993 Annual Report, Woodville, Texas. Name of person preparing this notice: **LISA LEVINE** Title: **TAX ASSESSOR-CALCULATOR** Date prepared: **8/20/93**

* Tax increase discussed by commissioners

her calculations (See page 6A for a complete breakdown), the effective tax rate for 1993 would be 52.28 cents. At present, the county assesses a 31 cent tax for the general fund, a 17 cent tax for the road and bridge fund and a 5 cent tax to retire the debt created by the construction of the Tyler County Justice Center.

Practitioner 2 Commissioner Pete Barnes noted that before he could support a tax increase, there would have to be a thorough study made. "We will have to go through this with a fine toothed comb. If we do have to increase taxes, then I want to more than we absolutely have to have."

Practitioner 4 Commissioner Henry Earl Sawyer added and both Mahaz and Precinct 1 Commissioner Maxie Riley also voiced their support.

In other discussion Monday, the commissioner once again received a request for additional funds from Precinct 2 Justice of the Peace Tom Parker, who is seeking to elevate his office to full-time status.

Parker, like the PJA in precincts 3 and 4, is currently budgeted as a part-time county official and is requesting that he be granted office space and a budget similar to that given to Precinct 1 JP Wanda Brasher.

Practitioner 3 Commissioner Maxie Riley also voiced his support for the increase in the health insurance item.

Although commissioners took no action regarding Parker's request, the JP continued that an increase in his budget would not cost the county taxpayers any additional money.

Practitioner 4 Commissioner Henry Earl Sawyer noted that an increase in his budget would produce an extra \$143,432 in the general fund while the road and bridge account would be expected to gain \$40,613.

Owens noted that the county has gone three years without a tax increase and that the commissioners would need to examine the overall financial situation before committing themselves to an increase.

"When I talk about tightening the belt," Owens said, "we've been doing that for four years." Owens said, "This isn't the first time but you can reach a point where the belt buckle and the back of your pants are rubbing."

Practitioner 2 Commissioner Pete Barnes noted that before he could support a tax increase, there would have to be a thorough study made. "We will have to go through this with a fine toothed comb. If we do have to increase taxes, then I want to more than we absolutely have to have."

Practitioner 4 Commissioner Henry Earl Sawyer added and both Mahaz and Precinct 1 Commissioner Maxie Riley also voiced their support.

In other discussion Monday, the commissioner once again received a request for additional funds from Precinct 2 Justice of the Peace Tom Parker, who is seeking to elevate his office to full-time status.

Parker, like the PJA in precincts 3 and 4, is currently budgeted as a part-time county official and is requesting that he be granted office space and a budget similar to that given to Precinct 1 JP Wanda Brasher.

Practitioner 3 Commissioner Maxie Riley also voiced his support for the increase in the health insurance item.

Although commissioners took no action regarding Parker's request, the JP continued that an increase in his budget would not cost the county taxpayers any additional money.

Practitioner 4 Commissioner Henry Earl Sawyer noted that an increase in his budget would produce an extra \$143,432 in the general fund while the road and bridge account would be expected to gain \$40,613.

Owens noted that the county has gone three years without a tax increase and that the commissioners would need to examine the overall financial situation before committing themselves to an increase.

"When I talk about tightening the belt," Owens said, "we've been doing that for four years." Owens said, "This isn't the first time but you can reach a point where the belt buckle and the back of your pants are rubbing."

Woodville Post Office Taking A Look At Itself

The Woodville Post Office is taking a look at itself this week and needs your help. Please respond to the questionnaire below and then cut it out and bring to the Woodville Post Office at 307 W. Wheat Street and drop it in the box provided at the entrance.

WOODVILLE POST OFFICE QUESTIONNAIRE: 1. Do you normally conduct business in this office? YES NO If no, what office?

WOODVILLE POST OFFICE QUESTIONNAIRE: 1. Do you normally conduct business in this office? YES NO If no, what office? 2. What time of day to you normally visit the post office? 3. What type of service do you use? (Le., purchase stamps, money orders, mail packages) 4. How long do you wait for service in this office? 5. Are our hours of service convenient for you? 6. How would you rate the service provided by our window clerks? 7. How would you rate the service provided by your carrier?

(CLIP OUT AND BRING TO WOODVILLE POST OFFICE) THANK YOU!

Business and Service Guide

Promote your business in the Booster's Business and Service Guide. Call 283-2516 for details.

Advertisements for various services including: Guy's TV Satellite Service, The Highlander, RENT A TEMPO from KNAPP FORD, Tyler County Chiropractic, Davis Wrecker Service, Dogwood Trails Manor, Triple 'L' Equipment Rental, and a CD advertisement for 6.00% interest.

LOCAL PRISON MINISTERS MEET AT HUNTSVILLE CONFERENCE—Gib Lewis Prison mentors met with other prison ministers statewide on Saturday to discuss future plans for expanding ministry activities.

Practitioner 2 Commissioner Pete Barnes noted that before he could support a tax increase, there would have to be a thorough study made. "We will have to go through this with a fine toothed comb. If we do have to increase taxes, then I want to more than we absolutely have to have."

* Boom coming

dedicated that he saw no problem with using the courtroom on a temporary basis but said he would be opposed to any records being taken out of Gregory's office.

* Governor visits

Historical Association. He and his wife, Ann, have been married for 30 years and they have two married children.

* Tax increase discussed by commissioners

her calculations (See page 6A for a complete breakdown), the effective tax rate for 1993 would be 52.28 cents.

* Boom coming

dedicated that he saw no problem with using the courtroom on a temporary basis but said he would be opposed to any records being taken out of Gregory's office.

* Governor visits

Historical Association. He and his wife, Ann, have been married for 30 years and they have two married children.

* Tax increase discussed by commissioners

her calculations (See page 6A for a complete breakdown), the effective tax rate for 1993 would be 52.28 cents.

Garage Sales

1. GARAGE SALES: Riding lawn mowers, Wizard 1HP, and Sanyo, 10 HP, Twin double queen, King and Florida beds, refrigerators, stove, washer & dryer, chests of drawers, etc.

WATKINS

on the shelf MEXICAN SILVER From trash to treasures BABE'S PLACE Booth 16 FERGUSON'S FLEA MARKET Hwy 69 between Warren and Hillstar 283-0942

CLEARANCE SALE

91 Lincoln Town Car, low miles, leather interior, all power options, automatic, air, power windows, 1992 model. \$12,750

DOZER WORK

L & L DOZER WORK • LEVING • CLEANING • DRIVEWAYS LARRY D. DANMON Rt. 2, Box 464 (409) 847-3037 Warren, TX 77794

9A. JOBS AVAILABLE

Agents with no experience. Company expanding. \$12-18 hr. + Bonus. Send SASE for Details to: 1375 Green Island Ave., Ste. 427 Brooklyn, NY 11230

T.D.C.J. CORRECTIONS OFFICERS

Texas Department of Criminal Justice is accepting applications until September 23, 1993, for TDCJ correctional officer night class training leading to wages of \$1,545-\$1,545 monthly in new prison opening.

2C. PROFESSIONALS

Need help learning a new computer or program? Need one installed or repaired? 1-877-375-7229

3B. CLEANING

Two Christian ladies willing to clean your home at an affordable price. Call Carol, 283-8750 or 283-8719.

3F. YARD CARE

Hard working young man wants to do yard work in the Tyler area. Reasonable rates. 283-3424.

3G. LESSONS

GUITAR LESSONS by NOVA BAE beginning September 1st 283-2714

4C. PAINTING

HELP FROM ABOVE We do all kinds of painting, inside, outside, etc. Call for estimates. 283-2714

4D. PLUMBING

Plumbing, Electrical, 15 years experience. Colmesneil area. Reasonable rates. 837-5252

4L. STORAGE FACILITIES

TEJAS MINI-STORAGE Now Leasing Hwy 268 East, Colmesneil 409-837-9704 or 837-5403

KNAPP FORD

283-2526 YOUR CHOICE New Nissan Starts As Low As \$3,749 To Qualified Buyers. NATIONWIDE 1-800-967-6271

SECURITY FINANCE CORP. Loans from \$100 to \$385 Back To School! Phone Applications Welcome

The Tyler County Booster Classified Ads Get Results

Quality Tires at DISCOUNT PRICES

Table of tire prices for various brands and sizes, including 25% OFF CUSTOM RIMS, IMPORT CONDOVAN, 45,000 MILE FIRST LINE, and PREMIUM SMOOTH RIDE.

Table of tire prices for various brands and sizes, including 65,000 MILE GRAND PRIZE, SPORT GRAND PRIZE, and HIGH PERFORMANCE.

Table of tire prices for various brands and sizes, including DISCO BRAKE SPECIAL, OIL & FILTER SPECIAL, WHEEL ALIGNMENT, HEAVY DUTY GAS SHOCKS, and 11R24.5 RADIAL TRUCK TIRE.

Remember... Classified ad deadline 3 p.m. Monday 25% OFF

90 DAYS SAME AS CASH Modica Bros. Tires & Wheel

CITY WIDE LIVE PEP RALLY & DANCE Wal-Mart Parking Lot-Saturday, 8 p.m. For Woodville I.S.D. Band, Cheerleaders And Football Players

Event Radio Remote Sponsored by KVLL-V94.7FM Look For Lakes Country Disc Jockey Darrel Lane. Everyone Is Invited To This Country & Western Event. YOU DO HAVE A CHOICE EAST TEXAS

City Wide Live Pep Rally & Dance. Lakes Country 94.7 FM. Hot-New Country. YOU DO HAVE A CHOICE EAST TEXAS.

Wal-Mart Portrait Studio Now Two Packages! CHOOSE ONE PACKAGE I 32 Portraits \$4.88 PACKAGE II 81 Portraits \$12.88

Why Go Anywhere Else? 1121 S. Magnolia Woodville 283-3011

Sale 1 Pair Soft Contact Lenses \$89.00 Dr. Gary E. Tatum Optometrist 103 N. Pecan, Woodville 283-3011

Voters to decide on agricultural financing

AUSTIN — Action by the Texas Legislature this general session will allow voters across the state on Nov. 2 to decide on increasing an agricultural finance program's funding authority from \$25 million to \$100 million...

Call 283-2516 to place a classified ad!

MEETING THE PHYSICAL CHALLENGE...

Today's finished orthotic or prosthetic product bears little resemblance to the old appliances, which were heavier and rather unsightly, with hooks and exposed cables...

Taylor Orthotics & Prosthetics 1-800-777-7893

Botanical illustrations exhibited in Lufkin

LUFKIN — Pines and Posies: Botanical Illustration by Lee McCaffree is an exhibit at the Spurger Museum in Lufkin through Sept. 26...

Subscribe Today To THE TYLER COUNTY BOOSTER WHERE THE NEWS AND ADS ARE HOT BUT THE SUBSCRIPTION PRICE IS COOL!

Aug. 25 WEDNESDAY August 25, 1993 Volume 65 Number 34 WOODVILLE, TEXAS 25 CENTS USPS 645-560

THIS WEEK Wednesday, Aug. 25 Rotary District Governor Chester Burns of Galveston will make his official annual visit to the Woodville Rotary Club...

Spurger Chapter No. 648 of the TOPS weight loss organization meets at 7 p.m. at the Spurger United Methodist Church...

The Tyler County Booster

Tax hike option eyed by county commissioners

WOODVILLE — Although quick to point out that discussion at Monday's budget workshop was a review of a "possible option," Tyler County commissioners began to explore a tax increase to offset projected losses in revenue during 1994...

Moore that the biggest part of that savings would come from the elimination of \$156,000 in transfers from the general fund to the county right-of-way and precinct road and bridge funds...

much land the county will have to acquire for the project. Mahan said the latest estimates fall between 115 and 160 acres.



Under the terms of the highway extension project, the county will be responsible for acquiring the needed right-of-way as well as for covering the cost of moving electrical, water and gas lines located along the existing county road right-of-way...

Woodville — District Governor Chester Burns of Galveston will visit the Woodville Rotary Club during their noon luncheon meeting Wednesday, Aug. 25...

Marijuana crop harvested

Law enforcement officers beat local marijuana farmers to the punch Tuesday morning, harvesting 25 plants of the illegal weed off McClure Road in Tyler County...

Sales tax income up by 44%

WOODVILLE — Tyler County's sales tax income continued to rebound during August with a 44.1 percent increase over the amount received one year earlier...

District governor visits Woodville Rotary Club

WOODVILLE — District Governor Chester Burns of Galveston will visit the Woodville Rotary Club during their noon luncheon meeting Wednesday, Aug. 25...

'Oil boom' projected

WOODVILLE — Referring to a coming "oil boom," Tyler County Clerk Donice Gregory warned county commissioners Monday that conditions in her office could be extremely crowded in coming months...

DQ Dairy Queen Country Basket \$1.99 1009 S. Magnolia Woodville 283-2509

SUMMER CLEARANCE! SPECIAL CHEST 4 DRAWERS \$49 BASSETT Side-By-Side \$699 PINEY WOODS Warehouse Furniture & Appliances

Aug. 25 WEDNESDAY August 25, 1993 Volume 65 Number 34 WOODVILLE, TEXAS 25 CENTS USPS 645-560

Aug. 25 WEDNESDAY August 25, 1993 Volume 65 Number 34 WOODVILLE, TEXAS 25 CENTS USPS 645-560

Page Two



by Dottie Johnson

History repeats itself at Village - Season of theater kicks off Friday and Saturday

Ellen Lindsay Griffin of Snyder, it was written by her father David Lindsay and appeared in the Beaumont Enterprise...

"The time has surely come when the people of Tyler County should take more care and interest in preserving and collecting the evidences of their own history..."

"Every year old landmarks are destroyed, old papers which record the deeds and manners of living in early Tyler County are swept into rubbish..."

Summer Fun Homework time is vital

By Darby Kethan I used to "teach school" long before I became a public school teacher...

"In the evenings we studied current lessons and learned new materials. Every day child needs time set aside for reviewing the day's lessons..."

"In addition to having a set time for homework, it is important to have a quiet area, away from distractions like television, family conversations, etc., no ready for that 'picked it up' to teach them..."

"Homework is just what the words say... it's done at home. Usually, this means reading and writing work to reinforce what has been taught that day at school..."

"Although early grades may have little homework assigned, it is a good practice to set aside time each evening for 'homework'..."

* Sales tax income climbs (Continued from Page 1)

reported to the comptroller in July. Sharp noted that the local payments were sent as part of \$182.3 million in August sales tax rebates to a 1.09 Texas cities and 109 counties, a 15.9 percent increase over payments made in August 1992...

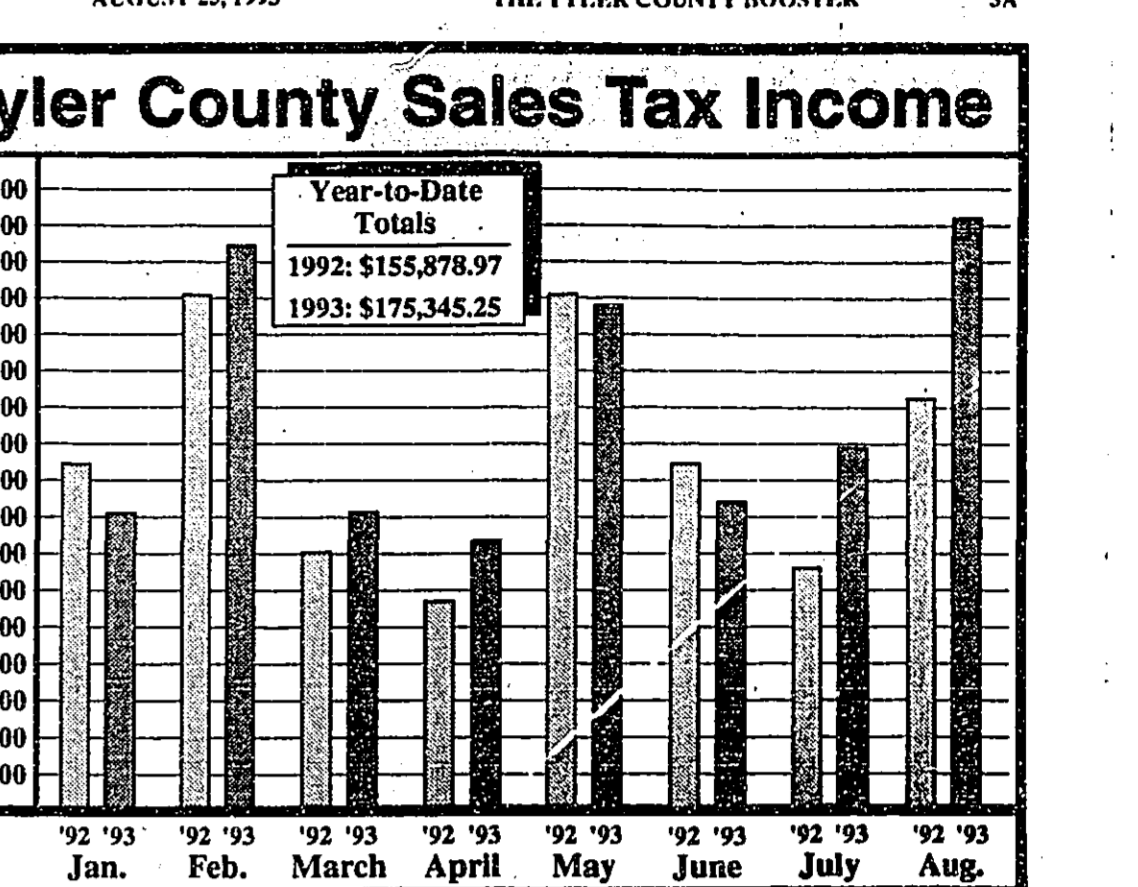
\$687,257.67. This represents a 6.1 percent increase over August 1992 and brings the city's year-to-date total to over \$4.1 million.

"The City of Houston received \$25.2 million, the largest sales tax rebate for August. This reflects a 11.1 percent increase from the city's \$22.5 million payment of August 1992..."

"Katyville, which received \$17,508.28. This represents about a 12.2 percent increase over the \$15,745.52 received one year earlier..."

"The city of Houston received \$25.2 million, the largest sales tax rebate for August. This reflects a 11.1 percent increase from the city's \$22.5 million payment of August 1992..."

"Livingston, which received \$14,454.69. This represents almost a 20.4 percent increase over the \$12,000.00 received one year earlier..."



Beech Creek homemakers plan for 1994

SPURGER—Members of the Beech Creek Extension Homemakers met on Wednesday, Aug. 18, to hear a program on "Caring/iving" and to make plans for their 1994 Scholarship Quilt...

Hear more with less!!! Hearing aids from Bellone have helped more than 1 million people keep their hearing problems a secret...

Indonesian professor visits Woodville

By John Morrison WOODVILLE—Professor Bonar H. Pasribu, a native of Indonesia from Medan City on the island of Sumatra, came to America with a heritage of the Batik People...



INDONESIAN VISITORS—Husband and wife Bonar and Bintang Pasribu, are shown with nephews Ryan and Scott Sturrock, grandchildren of Allan and Rachel Sturrock of Woodville, during a visit last week...

Sheriff's Report Activities during the week of Aug. 16-22

During the week, Tyler County Sheriff's Deputies: -Investigated seven burglary complaints, including a break-in four Williams residences involving losses of \$630, \$200, \$1,200 and \$300...

To place a classified ad call 283-2516

Too late to classify: LOST -24 inch aluminum step ladder, between Wildwood and Highway 69. REWARD Call 283-3230

Happy 40th Wedding Anniversary Bob and Jean West

We love you! -Rusty, Leslie, Bobby, Jessica, Zachary & Levi

Yvonne's Antiques & Another Time Linens & Glassware 25% off, Shell, Animal and men's soap 50% off, Claire Burke-Wisteria only 25% off, Decorator Napkins 30% off...

Jarrott's Bridal Registry August 21, 1993: Teri Vaughn, Jerrod Nichols; August 28, 1993: Melinda Dennis, Matthew Fortenberry

Readers Write Just a small correction

Dear Editor: This letter to you about "Tyler County People Are Best" (Readers Write, Aug. 11) - just a small correction. We moved from Tyler County in 1928 and came back to stay in 1943...

Cat... service improvement needed

Dear Editor: I have complained numerous times regarding the tony cable service in this area. I get the same standard ex-view you got from TCA - about local channels and co-channeling. I spoke to a lady named Sue this morning and asked her why they do not offer USA, LIFE or WGN - she said that if people would write to the station and let them know what we want and maybe those channels could be added.

Excellent medical care given

Dear Editor: A special thanks to the staff of Tyler County Hospital for the excellent medical care given to us and the hospitality shown. A special thanks to Minnie Mack, RN, Lou Ella Barr, L.V.N., and Dr. R.E. Swearingen for the great care.

Rescue workers offer appreciation

Dear Editor: On July 13th, I was seriously injured in a freak accident while alone in the deep woods of Tyler County near Dam B. I would like to thank all of the following people who found me, called 911, saved my life and prevented me from being completely and permanently paralyzed for the rest of my life...

Letters to the Editor Policy

It is the policy of The Tyler County Booster to publish its Readers Write column letters to the editor regarding items of local interest. The Booster reserves the right to edit the letters and to withhold publication of libelous material.

State Capitol Highlights Hutchison to appear before grand jury

By Lyndell Williams and Ed Sterling AUSTIN—U.S. Sen. Jay Bailey Hutchison last week was requested to appear before the Travis County grand jury that is investigating possible misuse of state employees and equipment while he served as state assistant director...

Wilson: Budget bill is step for the better

By Charles Wilson U.S. Representative In May, I voted against a budget bill that I believe has been the most dangerous for the East Texas economy. I voted against a bill that had too few spending cuts and too many new taxes. On August 5, I was able to vote for a better plan that met most of my objections with better ideas for deficit reduction while significantly reducing taxes on working and middle class Americans...

Sheriff's Report Activities during the week of Aug. 16-22

During the week, Tyler County Sheriff's Deputies: -Investigated seven burglary complaints, including a break-in four Williams residences involving losses of \$630, \$200, \$1,200 and \$300...

The Tyler County Booster Serving the people of Tyler County since 1930. (409) 283-2516 204 W. Bluff P.O. Box 248 Woodville, Texas 75797

Wilson: Budget bill is step for the better. In May, I voted against a budget bill that I believe has been the most dangerous for the East Texas economy. I voted against a bill that had too few spending cuts and too many new taxes.

To place a classified ad call 283-2516. Too late to classify: LOST -24 inch aluminum step ladder, between Wildwood and Highway 69. REWARD Call 283-3230

Happy 40th Wedding Anniversary Bob and Jean West. We love you! -Rusty, Leslie, Bobby, Jessica, Zachary & Levi

Jarrott's Bridal Registry August 21, 1993: Teri Vaughn, Jerrod Nichols; August 28, 1993: Melinda Dennis, Matthew Fortenberry

Tyler County Effective Tax Rate

1993 Property Tax Rates in TYLER COUNTY

This notice concerns 1993 property tax rates for Tyler County. It presents information about three tax rates. Last year's tax rate is the actual rate that was used to determine property taxes last year. This year's effective tax rate would be the same rate that you use to compare properties taxed in both years. This year's rollback tax rate is the highest tax rate the school district can set before it must hold a rollback election. In each case these rates are found by dividing the total amount of taxes and state funds by the total value of taxable property with adjustments as required by state law. The rates are given per \$100 of property value.

	1992			1993		
	General Fund	Health Services	Jail Fund	General Fund	Health Services	Jail Fund
Last year's tax rates	\$ 1,396,539	\$ 24,721	\$ 21,070	\$ 1,396,539	\$ 24,721	\$ 21,070
Last year's operating taxes	\$ 1,396,539	\$ 24,721	\$ 21,070	\$ 1,396,539	\$ 24,721	\$ 21,070
Last year's total taxes	\$ 1,396,539	\$ 24,721	\$ 21,070	\$ 1,396,539	\$ 24,721	\$ 21,070
Last year's tax base	\$ 450,496,184	\$ 12,282,189	\$ 7,377,024	\$ 450,496,184	\$ 12,282,189	\$ 7,377,024
Last year's total tax rate	\$.31	\$.20	\$.28	\$.31	\$.20	\$.28
This year's effective tax rates:						
Last year's adjusted taxes	\$ 1,372,648	\$ 24,721	\$ 21,070	\$ 1,372,648	\$ 24,721	\$ 21,070
(After subtracting taxes on lost property)						
This year's adjusted tax base	\$ 447,693,731	\$ 12,282,189	\$ 7,377,024	\$ 447,693,731	\$ 12,282,189	\$ 7,377,024
(After subtracting value of new property)						
This year's effective tax rate	\$.3074	\$.20	\$.28	\$.3074	\$.20	\$.28
- For each fund						
Total effective tax rate	\$.3229	\$.20	\$.28	\$.3229	\$.20	\$.28

At the first year a county collects the additional sales tax for medical property taxes, it must hold the following year unless its first additional sales tax year.

	1993	1994
Sales tax adjustment rate	\$.00	\$.00
Effective tax rate	\$.3074	\$.28

x 1.03 = maximum rate unless unit publishes notices and holds hearing \$.5378 /100

This year's rollback tax rate:
Last year's adjusted operating taxes (After subtracting taxes on lost property and including taxes for state criminal justice mandate) \$ 1,642,601
This year's adjusted tax base \$ 447,693,731
This year's effective operating rate \$.36713 /100
x 1.03 = this year's maximum operating rate \$.37814 /100
This year's debt rate \$.00
This year's rollback rate for each fund \$.3950 /100
This year's total rollback rate \$.6292 /100

A county that collects the additional sales tax to reduce property taxes, including last year's rollbacks, for the first time this year, must repeat the following:
Sales tax adjustment rate \$.0568 /100
Rollback tax rate \$.5682 /100



DANCE PERFORMANCE PLANNED—Local vocalist Roger Byars will dance again perform at the Holiday Pines Manor dance beginning at 7 p.m. Thursday, Aug. 16. The public is invited to attend the event.

Meetings/Events

Painting workshop rescheduled
WOODVILLE—The Pineywoods Woodville on Hwy 69. Rescheduled from a previous cancellation, the workshop will be taught by Don Letzow and the crew for two days, Sept. 14 and 15 from 9 a.m. to 4 p.m. at J. Reid's Fine Art Gallery, located in the north of Woodville on Hwy 69. For more information call 283-4009.

Watercolor demonstration slated
WOODVILLE—The Pineywoods Woodville on Hwy 69. Rescheduled from a previous cancellation, the workshop will be taught by Don Letzow and the crew for two days, Sept. 14 and 15 from 9 a.m. to 4 p.m. at J. Reid's Fine Art Gallery, located in the north of Woodville on Hwy 69. For more information call 283-4009.

Hunter safety class planned

WOODVILLE—Hunting season is just a few short weeks away, and anyone planning on hunting in Texas or other states is required to complete a Hunter Safety Education course. This Sept. 8, all hunters who are at least 17 years of age and whose date of birth is on or after Sept. 2, 1971 must have successfully completed the course to hunt in Texas. A Hunter Safety Education Class will be given at the Woodville High School Library beginning Monday, Sept. 13 and continuing through Tuesday, Sept. 16 from 6 p.m. to 8:30 p.m. There is an administrative fee of \$5 for the course. For further information contact National Park Ranger Charles Borchardt at 283-3824 or 283-7520 after 3 p.m. or Texas Game Warden Mike Ward at 283-2211.

Warren 4-H Club meets Sept. 14

WARREN—The Warren 4-H Club will meet at 7 p.m. Tuesday, Sept. 14 at the 4-H meeting house. All members need to be present.

Call 283-2516 to place a classified ad!

Sale
1 Pair Soft Contact Lenses **\$89.00**

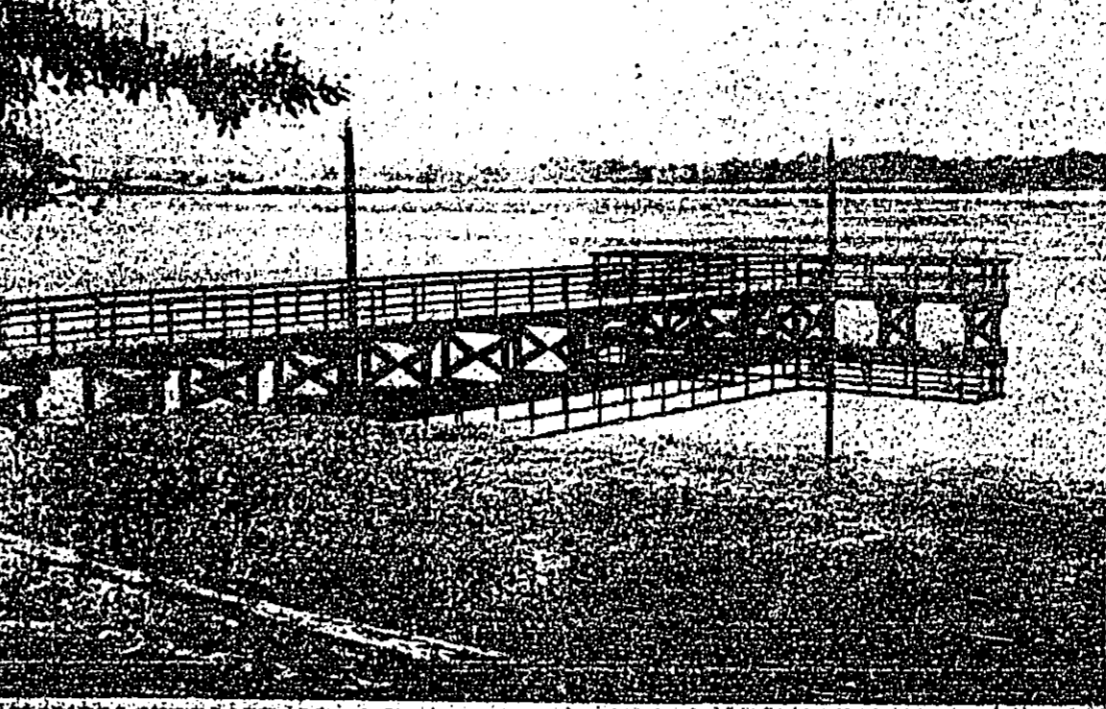
Exam Not Included Extra Charge for Toric Lenses

Dr. Gary Tatum

Single Vision Glasses 1 Pair \$49.00 2 Pair \$79.00	Bifocal Glasses 1 Pair \$69.00 2 Pair \$99.00
---	---

NO COUPON REQUIRED

Dr. Gary E. Tatum
Optometrist
103 N. Pecan, Woodville 283-3611



PLAN TO LOWER LAKE ADVANCES—In an effort to control the growth of aquatic plants that are flooding much of B.A. Sabin Lake, the U.S. Army Corps of Engineers is working with various governmental and non-governmental agencies to develop a plan to lower the lake level for six weeks. Local Texas Parks and Wildlife Department staff members already have given their approval and the agency's executive director is being contacted. In addition, the Corps is contacting representatives of the Lower Neches Valley Authority (LNVA). If the plan which LNVA supports, that Corps would lower the lake level would be approved, from mid-December through January. Members of a group known as Dam B Conservationists have been circulating a petition which, among other things, asks the Corps to back the problem of aquatic plant growth. Thus far, over 3,660 signatures have been obtained and the petition is still being circulated in Tyler, Jasper and other area counties. (Photo by Greg Peck)

School Lunch Menu

- Chester ISD**
WEDNESDAY, Aug. 25: Chicken fried steak, potatoes with gravy, English peas, apple and milk.
THURSDAY, Aug. 26: Barbecue with ribs, baked potato, garden salad, french fries and milk.
FRIDAY, Aug. 27: Hamburgers, lettuce, tomato, pickles, onions, French fries, coffee and milk.
MONDAY, Aug. 28: Macaroni with ground beef, black-eyed peas, mixed vegetables, cornbread and milk.
TUESDAY, Aug. 29: Barbecue chicken, potato salad, baked beans, rolls and milk.
- Colman ISD**
WEDNESDAY, Aug. 25: Spaghetti and cheese sauce, meat, corn, Italian bread, fruit and milk.
THURSDAY, Aug. 26: Mini-sub sandwich, lettuce, tomato, pickles, chips, fruit and milk.
FRIDAY, Aug. 27: Mini-sub sandwich, lettuce, tomato, pickles, chips, fruit and milk.
MONDAY, Aug. 28: Mini-sub sandwich, lettuce, tomato, pickles, chips, fruit and milk.
TUESDAY, Aug. 29: Grilled chicken sandwich, lettuce, tomato, pickles, chips, fruit and milk.
- Warren ISD**
WEDNESDAY, Aug. 25: Skippy food, French fries, pickles, onion rings, french fries, hot chili con carne, french fries, hot chili con carne, french fries, hot chili con carne.

What's The Difference Between Louisiana-Pacific And Other Timber Buyers?

And just what is it that makes L-P better for your timberlands?

Is it our assistance in developing management plans? Is it our consulting services? Is it our single tree selection for your bottom line? Or our professionals? Sure... others can offer you most of these services.

What's The Difference?

but the difference... really, is not so much what we do, but how we do it. Our business is based on people just like you. People trying to build a better life for themselves and their families. When money matters are at stake, it's only natural to turn to the tried and true. At L-P, we really can make the difference.

We want to be your forest advisor. We can write a management plan to fit your needs and dreams. We can assist in the management, marking and harvesting of your timber, and the replanting of your timberlands.

What does it cost you? Very little or nothing at all—depending on the services. For complete details contact Tree Enterprise professionals. We're ready to work for you.

Louisiana-Pacific. We know the tree business.

LP Louisiana-Pacific
Helping the Forest Work For People

For more information contact one of the following Louisiana-Pacific Forestry Offices:
Carthage 409-343-3441, Conroe 409-768-2511, Crockett 409-844-8625, Jacksonville 903-598-3088, Jasper 409-384-3111, Lufkin 409-232-1311, New Waverly 409-343-3441

Warren ISD Effective Tax Rate

1993 Property Tax Rates in WARREN ISD

NOTICE OF EFFECTIVE TAX RATE

This notice concerns 1993 property tax rates for WARREN ISD. It presents information about three tax rates. Last year's tax rate is the actual rate the school district used to determine property taxes last year. This year's effective tax rate would impose the same total taxes as last year if you compare properties taxed in both years. This year's rollback tax rate is the highest tax rate the school district can set before it must hold a rollback election. In each case these rates are found by dividing the total amount of taxes and state funds by the total value of taxable property with adjustments as required by state law. The rates are given per \$100 of property value.

Last year's tax rates:			
Last year's operating taxes		\$ 707,323.47	
Last year's debt taxes		\$ 0.00	
Last year's total taxes		\$ 707,323.47	
Last year's tax base		\$ 144,718,281	
Last year's total tax rate		\$.4897	/100
This year's effective tax rates:			
Last year's adjusted taxes		\$ 679,161.00	
(After subtracting taxes on lost property)			
This year's adjusted tax base		\$ 139,080,762	
(After subtracting value of new property)			
This year's effective tax rate		\$.4920	/100
x 1.03 = maximum rate unless the school district publishes notices and holds hearing		\$.5067	/100
This year's rollback tax rate:			
School maintenance and operations component		\$ 2,074,011	
This year's tax base		\$ 136,947,128	
This year's local maintenance and operating rate		\$ 1.5168	/100
x 1.03 = this year's maximum operating rate		\$ 1.5723	/100
This year's debt rate		\$ 0.00	/100
This year's rollback rate		\$ 1.5788	/100

Schedule A
Unencumbered Fund Balances

The following estimated balances will be left in the unit's property tax accounts at the end of the fiscal year. These balances are not encumbered by a corresponding debt obligation.

Type of Property Tax Fund	Balance
-0-	-0-

Schedule B
1993 Debt Service

The unit plans to pay the following amounts for long-term debts that are secured by property taxes. These amounts will be paid from property tax revenues (or additional sales tax revenues, if applicable).

Description of Debt	Principal or Contract Payment to be Paid from Property Taxes		Interest to be Paid from Other Accounts		Total Payment
	1993	1994	1993	1994	
-0-	\$ -0-	\$ -0-	\$ -0-	\$ -0-	\$ -0-
Total required for 1993 debt service					
Amount (if any) paid from funds listed in Schedule A and collections last year					
Total to be paid from taxes in 1993					
Amount added in anticipation that the unit will collect only 92% of its taxes in 1993					
Total Debt Levy					

Schedule C
Expected Revenue from Additional Sales Tax

(For hospital districts, cities and counties with additional sales tax to reduce property taxes.)

In calculating its effective and rollback tax rates, the unit estimated that it will receive \$ _____ in additional sales and use tax revenues.

Schedule D
State Criminal Justice Mandate (For Counties)

The _____ County Auditor certifies that _____ County has opened _____ in the previous 12 months beginning _____ for the maintenance and operations cost of keeping _____ in addition to the cost, minus the state revenues received for reimbursement of such costs.

Schedule E
Transfer of Department, Function or Activity

The _____ of _____ from _____ to _____ on _____ operates this function in all or a major part of the _____.

This notice contains a summary of actual effective and rollback tax rates calculations. You can inspect a copy of the full calculation at _____.

Name of person preparing this notice: **LINDA LEVIE**

Title: **CHIEF APPRAISER-TAX ASSESSOR/COLLECTOR**

Date prepared: **8/20/93**

12A THE TYLER COUNTY BOOSTER AUGUST 25, 1993

*** Tax increase discussed by commissioners**

her calculations (See page 6A for a complete breakdown), the effective tax rate for 1993 would be \$2.228 cents.

Present, the county assesses a 31 cent tax for the general fund, a 17 cent tax for the road and bridge fund and a 5 cent tax to retire the debt created by the construction of the Tyler County Justice Center.

Harrison said the county could increase the overall rate by 3 percent up to \$3.794 cents without holding a public hearing. She noted that under the law, the county could increase the rate by 8 percent, up to \$6.824, but if it went beyond that point they would be subject to a tax rate rollback election.

Later in the meeting in response to questions from the commissioners, Harrison calculated the amount of revenue that could be generated by increasing either the general fund or the road and bridge fund tax rates.

By increasing the general fund tax rate by 3 percent, Harrison said an additional \$26,775 in revenue could be produced while a similar hike in the road and bridge rate would generate about \$3,853. An maximum 8 percent increase would produce an extra \$143,432 in the general fund while the road and bridge account would be expected to gain \$40,613.

Owens noted that the county has gone three years without a tax increase and that the commissioners would need to examine the overall financial situation before committing themselves to an increase.

"When I talk about 'tightening the belt,' you must realize that we've been doing that for four years," Owens said. "This isn't the first time but you can reach a point where the belt buckle and the back of your pants are rubbing."



LOCAL PRISON MINISTERS MEET AT HUNTSVILLE CONFERENCE—Gib Lewis Prison mentors met with other prison ministers statewide on Saturday to discuss future plans for expanding ministry activities. Shown above are (front, L-R) the Rev. Calvin Harris of Woodville; ex-offender Kenneth Taylor of Nederland, who brought a testimony for the group; Billy Brown of Colmesneil; (back, L-R) Bob Larson and Halls "Doc" Taylor, both of Village Mills; Gib Lewis Prison Chaplain Mike Maness; Jimmy Hagan of Lufkin; and the Rev. Jack Lewellen of Woodville. The conference was designed to inform local clergy and laity of the importance and validity of prison ministry as well as to be commended Biblically by Jesus in Matthew Chapter 25: 35-36. "To visit those in prison." The group shown above also represent the Gib Lewis mentor organization which visits inmates twice a month in one-on-one match situations as established by Maness. Persons interested in learning more about the program are asked to call the Gib Lewis Prison Chaplain at 283-8181. (Photo by John Morrison)

*** Boom coming** (Continued from Page 1)

dedicated that he saw no problem with using the courtroom on a temporary basis but said he would be pleased to have any records being taken out of Gregory's office.

"No, that is something that I am against as well," she said.

Owens said that if the researchers were serious about bringing in large numbers of workers to examine the county's land records, they should submit a formal letter to his office outlining their needs. "We'll try to work with them but we need to know exactly what kind of space they're talking about."

*** Governor visits** (Continued from Page 1)

national Society for the History of Medicine. He and his wife, Ann, have been married for 30 years and they have two married children.

CDs 6.00%

monthly interest

FDIC Insured

*Other Rates/Maturity Available
Minimum Deposit May Be Required
(409)384-5715
1-800-696-3782

Call: Cam Monroe
Advanced Financial Services
102 Water St. Jasper, Tx. 75851

Woodville Post Office Taking A Look At Itself

The Woodville Post Office is taking a look at itself this week and needs your help. Please respond to the questionnaire below and then cut it out and bring to the Woodville Post Office at 307 W. Wheat Street and drop it into the box provided at the entrance. According to Postmaster Jim Barnhart, "We are committed to providing you with quality service. You can help us maintain our high standards by answering the following questions. Thanks you for your business, your time, and your comments."

WOODVILLE POST OFFICE QUESTIONNAIRE:

1. Do you normally conduct business in this office? YES NO
If no, what office?
2. What time of day to you normally visit the post office?
3. What type of service do you use? (i.e., purchase stamps, money orders, mail packages)
4. How long do you wait for service in this office?
0-3 min. 3-5 min. Over 5 minutes
5. Are our hours of service convenient for you? YES NO
If not what changes would you like to see
6. How would you rate the service provided by our window clerks?
FAIR GOOD VERY GOOD
7. How would you rate the service provided by your carrier?
FAIR GOOD VERY GOOD

Any additional comments, ideas, or suggestions?

clip and bring to woodville post office

Business and Service Guide

Promote your business in the Booster's Business and Service Guide. Call 283-2516 for details.

KNAPP FORD
283-2526

YOUR CHOICE
We have the best financing plans in town. Call us today for a free quote. **NATIONWIDE**
1-800-987-6271

SECURITY FINANCE CORP.
Loans from \$100 to \$385
Back To School
Phone Applications Welcome
Serving Woodville, Warren, Chester, Colmesneil, Hillister, Ouzette, 112 W. Bluff, Surger, Dam B and Rockland 283-2578

CITY WIDE LIVE PEP RALLY & DANCE
WAL-MART PARKING LOT--SATURDAY, 8 P.M.
For Woodville I.S.D. Band, Cheerleaders And Football Players
Event Radio Remote Sponsored by KVLL-V94.7FM
Look For Lakes Country Disc Jockey Darrel Lane
Everyone is invited To This Country & Western Event

Guy's Satellite Service
Prompt Service on All Satellite TV Systems
Guy Yates 283-3478
278 US 192 West Woodville

The Highlander
Now open for Saturday suppers.
Reservations only. Open at 6:30 p.m. serving at 7 p.m.
283-7572
On-The-Square Woodville

RENT A TEMPO
from **KNAPP FORD** for only \$20 per day and 20¢ per mile
283-2526

You haven't tried everything until you've tried gentle Chiropractic Care for your head and body aches and pains
Tyler County Chiropractic
Call for an appointment 283-8181
Dr. Stephen F. Portcar

Davis Wrecker Service
We open 24 hours
Wrecker Service Starting at \$25
409-283-3514
Heavy Duty

DOGWOOD TRAILS MANOR
Tyler County's Newest Nursing Facility
78 Hwy 190 W. Woodville, Tx 75979
409-283-8147

TRIPLE "L" EQUIPMENT RENTAL
ALL COMPRESSORS
POWER TOOLS
ELECTRIC AND COMPRESSOR & TOOLS
BACKHOES & FRONT END LOADERS
PUMPS & GENERATORS
HIGH PRESSURE WASHERS
PORTABLE WELDERS
HANDSAWERS & POST HOLEDROGERS
DUMP TRUCKS
ROTARY TILLERS
PAYING BREAKERS
CONCRETE EQUIP.
384-8917
605 E. Millam Jasper

4M. DOZER WORK
L & L DOZER WORK
LEVELING • CLEARING • DRIVEWAYS
LARRY D. DUNN, JR. P.O. Box 464
(409) 547-3037 Warren, TX 77884

SMALL DOZER JOBS
BUSH CLEARING
LOGGING CLEAN-UP
BUSH HOGGING
LONNIE JOHNSON 283-2338
34-4-p

9A JOBS AVAILABLE
Hiring for East Texas Heavy Equipment Entry to \$20,000 after training. Mail resume to Rod Rish, P.O. Box 1387, Lufkin, TX 75901.

AGENTS - NO EXPERIENCE
Company Expanding - \$16.50 hr. Bonus
Send SASE for Details to:
International
1375 Cover Island Ave., Ste. 427
Brooklyn, NY 11230-3119

VOLUNTEERS WANTED - Women's Shelter needs volunteers, 9 a.m. to 1 p.m. Monday thru Friday. Also need volunteers to help sort, price and hang linen and help contractors in the resale shop. 501 W. Bluff, 283-2776. 14-0-0

TDCJ CORRECTIONS OFFICERS
Texas Department of Criminal Justice is accepting applications until September 23, 1993 for TDCJ Correctional officer night class training leading to wages of \$1,549-\$1,948 monthly in new prisons opening soon. Call Maria at 409-371-6000. Tuition is \$225 for the 145-hour training course which begins November 3. TDCJ is looking for candidates at Angelina College. For application and details call Angelina College (409) 633-2208
BEO/Affirmative Action Firm

NATIONAL PUBLISHING FIRM needs people to label postcards from home. \$2000 flat fee per year. Call 1-800-371-6000. 112 W. Bluff, 283-2776. 14-0-0

PERSONAL CARE AND HOUSEKEEPING Fred, Hillary, Town Staff, Pam-B. Immediate openings for part time attendants to provide care for elderly in their homes. Pay \$4.25 per hour. Call Maria at 409-371-6000. 112 W. Bluff, 283-2776. 14-0-0

DEPT. OF CORRECTIONS - Immediate openings for part time attendants to provide care for elderly in their homes. Pay \$4.25 per hour. Call Maria at 409-371-6000. 112 W. Bluff, 283-2776. 14-0-0

DEPT. OF CORRECTIONS - Immediate openings for part time attendants to provide care for elderly in their homes. Pay \$4.25 per hour. Call Maria at 409-371-6000. 112 W. Bluff, 283-2776. 14-0-0

DEPT. OF CORRECTIONS - Immediate openings for part time attendants to provide care for elderly in their homes. Pay \$4.25 per hour. Call Maria at 409-371-6000. 112 W. Bluff, 283-2776. 14-0-0

DEPT. OF CORRECTIONS - Immediate openings for part time attendants to provide care for elderly in their homes. Pay \$4.25 per hour. Call Maria at 409-371-6000. 112 W. Bluff, 283-2776. 14-0-0

The Tyler County Booster
Serving the people of Tyler County since 1930

Classified Ads Get Results

Quality Tires at DISCOUNT PRICES

25% OFF CUSTOM RIMS

SIZE	TRD DTP	PRICE
175R13	10/32	36.80
185R13	10/32	38.00
185R14	10/32	39.05
195R14	10/32	41.90
200R14	10/32	44.00

SIZE	TRD DTP	PRICE
P175R13	10/32	31.15
P175R13	10/32	34.15
P185R13	10/32	35.15
P185R14	10/32	36.50
P195R14	10/32	38.50
P200R14	10/32	40.50

SIZE	TRD DTP	PRICE
P175R13	10/32	46.25
P175R13	10/32	49.25
P185R13	10/32	50.25
P185R14	10/32	51.25
P195R14	10/32	53.25
P200R14	10/32	55.25

65,000 MILE GRAND PRIX TOURING RT \$49.45

SPORT GRAND PRIX RADIAL GT \$45.35

HIGH PERFORMANCE GRAND SPIRIT RADIAL R4 \$59.95

Disc Brake Special..... Most Cars..... **\$69.95**
Oil & Filter Special..... **\$20.95**
Wheel alignment..... Most Cars..... **\$24.95**
Heavy Duty Gas Shocks..... Each..... **\$15.95**

11R24.5 Radial Truck Tire 258.15
Steering Axel FEET 31.03 289.18

90 DAYS SAME AS CASH

Medica Bros. Tires & Wheel

Manusell 343-1794
Grove 352-9781
Bliss 358-5273
Woodville 383-0191

94.7 FM LAKES COUNTRY

Hot-New Country

YOU DO HAVE A CHOICE EAST TEXAS

To subscribe to The Tyler County Booster call 283-2516 today!

9B. MEDICAL JOBS AVAILABLE... Housekeeping and personal care, White Tail Ridge, Indian Reservation area...

9B. MEDICAL JOBS AVAILABLE... OLSTEN ATTENTION LVNS... We are looking to expand our quality nursing team...

10D. MOBILE HOMES FOR SALE... Largest volume dealer in East Texas...

Kids Off To College? Send Them News About Home Call 283-2516

Call for Appointment Office 283-3110... HOLLY BAKER 7 Miles South of Woodville on Hwy 69

TRI-COUNTY REALTY Thelma Cain, Broker... LAKEFRONT - Inmaculate 2 story 3 Br, 2 Ba, office, fireplace, completely landscaped with gazebo...

9D. BUSINESS OPPORTUNITIES... 850 Myr - 30 Easy Proven Ways - Info 31... 977 N. State Rd. 1, Houston, TX 77055

HOUSE FOR SALE Seneca Road, off Hwy 69... 2 miles South of Woodville, 2 baths, large den, double garage, Call Aubrey at (409) 962-8383 \$57,500

GRACE INGLE REAL ESTATE... Colmesneil - Off Holly Fork Rd, 6 acres with nice 3 Br furnished home...

PROFESSIONAL REALTY... 25 YEARS In The Business... Billy Frank & Charlotte Eaves

Jackie Brown Real Estate... US 69, Colmesneil 409-837-2973

11A. HOMES FOR RENT... IVANHOE Lease or sale, 2-2-2, unfurnished, FP, CHA RV cover, water well...

11C. MOBILE HOMES FOR RENT... One bedroom efficiency trailer for rent, \$300 per month, includes all utilities...

11E. WANTED... Reliable family needs to rent or lease/purchase a 2 or 3 car garage (for mobile home) with A/C in Ivanhoe, Warren or Woodville...

11F. HOUSEHOLD ITEMS... Singer Zig Zag, Less than 6 months old, Free arm model, makes, darns, buttonholes, appliques, em-broiders, monograms, top stitches, blind hem, 27.97 cash or payments...

12E. APPLIANCES... DRYER and Washers, \$55 to \$150, six month warranty, Will also buy and repair repair washers and dryers...

12H. FURNITURE... Antique dining table for sale, 283-7376, Call 283-3208

9B. MEDICAL JOBS AVAILABLE... CONCEPTS OF CARE... At Concepts of Care, we're proud of our 25-year history of Texans keeping friendly and neighbors healthy at home...

11C. MOBILE HOMES FOR RENT... One bedroom efficiency trailer for rent, \$300 per month, includes all utilities...

11E. WANTED... Reliable family needs to rent or lease/purchase a 2 or 3 car garage (for mobile home) with A/C in Ivanhoe, Warren or Woodville...

12E. APPLIANCES... DRYER and Washers, \$55 to \$150, six month warranty, Will also buy and repair repair washers and dryers...

12H. FURNITURE... Antique dining table for sale, 283-7376, Call 283-3208

9B. MEDICAL JOBS AVAILABLE... CONCEPTS OF CARE... At Concepts of Care, we're proud of our 25-year history of Texans keeping friendly and neighbors healthy at home...

12N. FOR SALE... Two rabbit pens with three compartments each, four rabbits, eight sheets 1/2 metal roofing, 15 sheets 3/4" plywood decking...

15A. PETS... Australian Shepherd pups, champion blood-line, Seven weeks old, both male and female black tri available...

17C. BOATS... 1981 Model Ebbtide 15 ft. Bass Boat with 70 HP Mercury Motor and Shoreline Trailer...

20. LEGAL NOTICES... NOTICE TO CREDITORS... Notice is hereby given that original Letters of Administration in the Estate of Brenda G. Walker, Deceased, were issued on August 12, 1993...

20. LEGAL NOTICES... CITATION BY PUBLICATION... To The Unknown Heirs of CURTIS JACKSON DILLON, Deceased...

H.E. 'Bud' Jones Real Estate... 106 E. Bluff 283-5000... EXECUTIVE HOME - 3 Br, 3 Ba, 3 car garage, sq. ft. 3 Br, 4 Ba home overlooking lake, great home, beautifully designed, with 3600 sq. ft. heated pool...

12M. WANTED TO BUY... Buildings to be removed or demolished... 1748 W. 11th St., Hwy 69 North, Woodville, TX 283-2833

East Texas Land Co. SALES MANAGEMENT TIMBER SAME LOCATION 21 YEARS... MONEY MAKER - Store & gas, cleaners, car wash, NEAT BRICK - on 2 nice acres, Campground daisy tent, lotto, all in best location...

12K. MUSICAL INSTRUMENTS... Small Spinet piano - like new - take up space - no down payment, low monthly payments... 1-800-324-1777

BOOSTER Bulletin Board... TREE SERVICE... Sanderson Home Improvements... Ramsey's Mini Warehouse... General Contractor... STUMP NO MORE... BOOKKEEPING... ASPHALT PAVING